



**HAL**  
open science

## Metabolomic application in fish nutrition: profiling novel aquaculture feeds and assessing their impact on rainbow trout plasma

Simon Roques, Catherine Deborde, Nadège Richard, Sandrine Skiba-Cassy, Annick Moing, Benoit Fauconneau

### ► To cite this version:

Simon Roques, Catherine Deborde, Nadège Richard, Sandrine Skiba-Cassy, Annick Moing, et al.. Metabolomic application in fish nutrition: profiling novel aquaculture feeds and assessing their impact on rainbow trout plasma. EUROMAR - European Magnetic Resonance Meeting, Jul 2018, Nantes, France. 2018. hal-02161578

**HAL Id: hal-02161578**

**<https://hal.science/hal-02161578>**

Submitted on 4 Dec 2023

**HAL** is a multi-disciplinary open access archive for the deposit and dissemination of scientific research documents, whether they are published or not. The documents may come from teaching and research institutions in France or abroad, or from public or private research centers.

L'archive ouverte pluridisciplinaire **HAL**, est destinée au dépôt et à la diffusion de documents scientifiques de niveau recherche, publiés ou non, émanant des établissements d'enseignement et de recherche français ou étrangers, des laboratoires publics ou privés.

# Metabolomics application : profiling novel aquaculture feeds and assessing their impacts on rainbow trout (*O. mykiss*) plasma

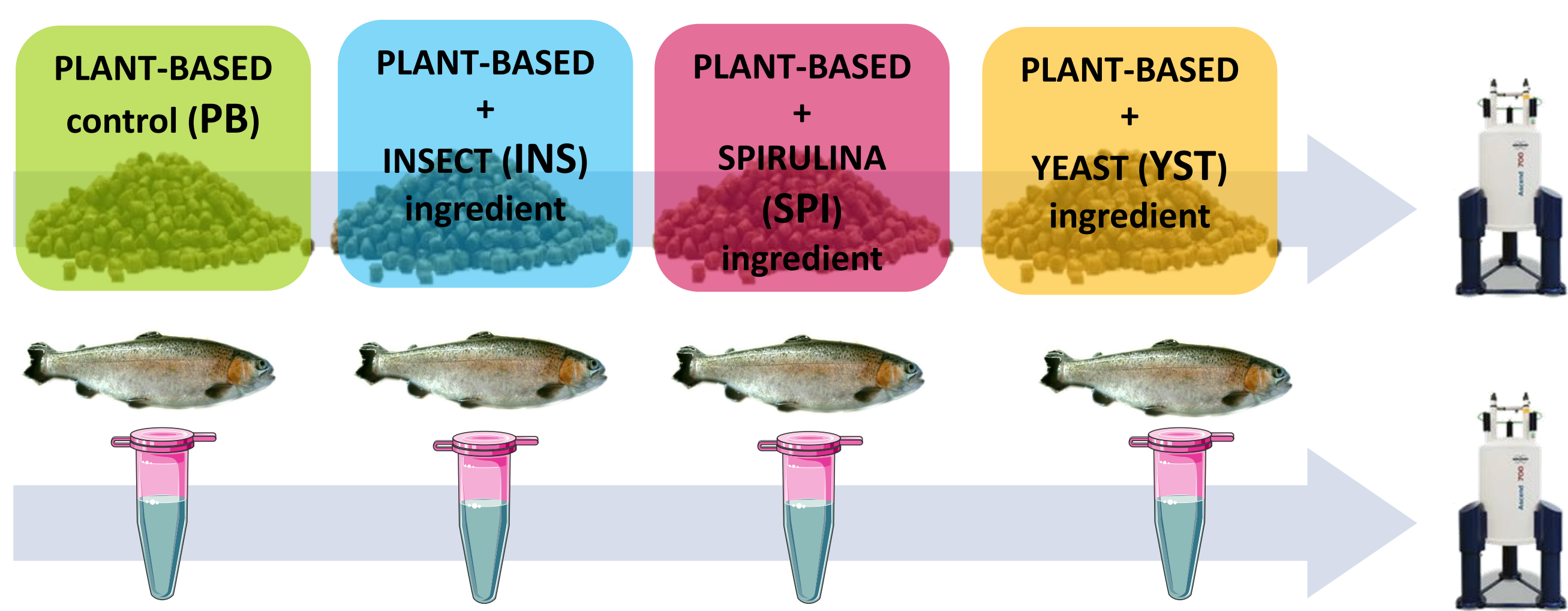
S Roques<sup>1,2,3</sup>, C Deborde<sup>2,4</sup>, A Moing<sup>2,4</sup>, N Richard<sup>3</sup>, S Skiba-Cassy<sup>1</sup>, B Fauconneau<sup>1</sup>

<sup>1</sup> INRA, UMR 1419 NuMeA Nutrition Métabolisme et Aquaculture, 64310 Saint Pée-sur-Nivelle, France  
<sup>2</sup> Plateforme Métabolome Bordeaux, MetaboHUB, CGFB, Centre INRA de Bordeaux, 33140 Villenave d'Ornon, France  
<sup>3</sup> Phileo Lesaffre Animal Care, 59700 Marc-en-Baroeul, France  
<sup>4</sup> INRA, UMR 1332 Biologie du Fruit et Pathologie, Centre INRA Nouvelle Aquitaine-Bordeaux, 33140 Villenave d'Ornon, France

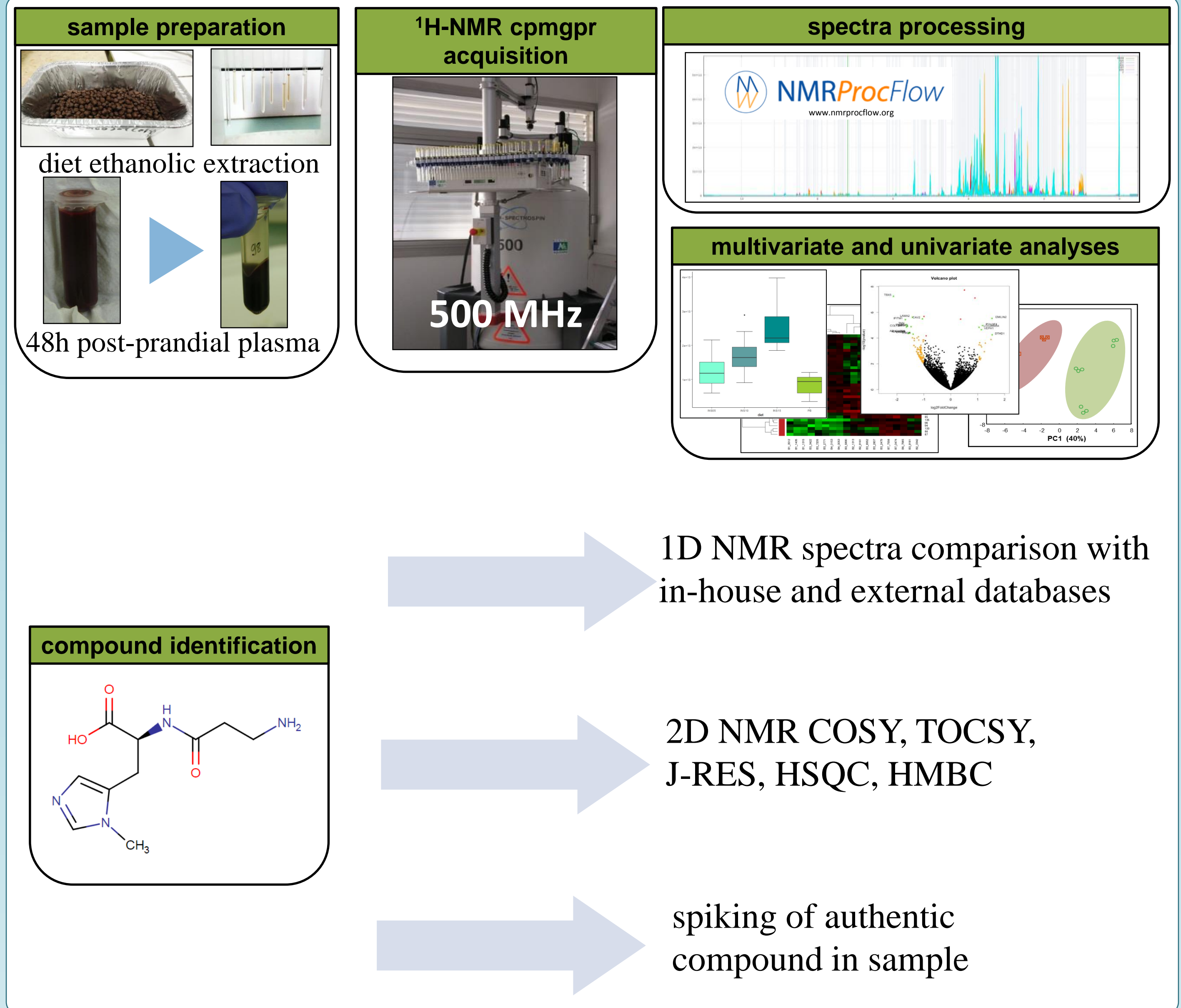
## Context

Fish meals in fish feeds are optimal for an efficient development of carnivorous species such as rainbow trout. However, its supply by fisheries quotas is limited to support further development of aquaculture. The full substitution of marine resources by plant ingredients has shown reduced growth performances and altered metabolism in rainbow trout<sup>1,2,3</sup>. Alternative protein ingredients are tested to complement full plant-based diets.

Objective: Identify **discriminant compounds** from alternative ingredients in the profiles of experimental **fish feeds** and depict the **metabolic state** of the fish through NMR-metabolomic approaches on **plasma**.

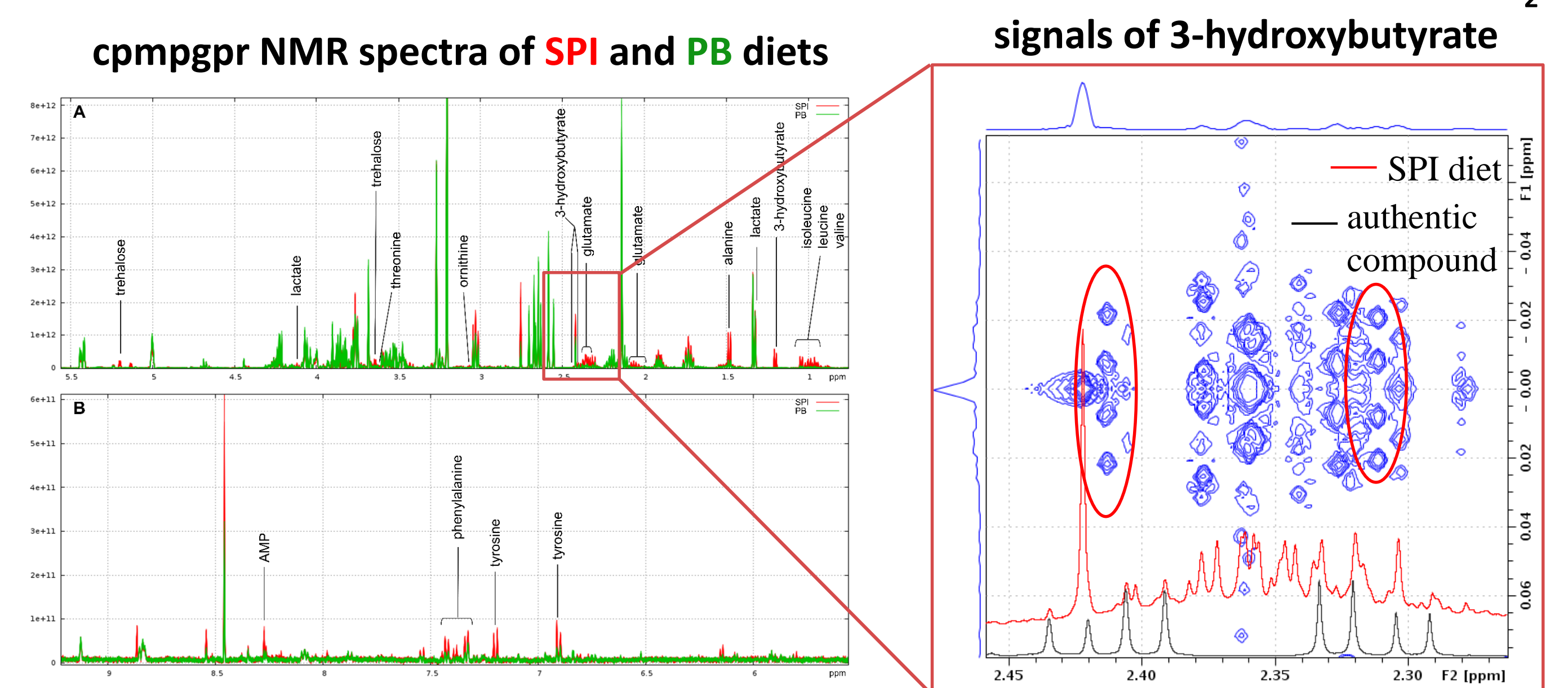
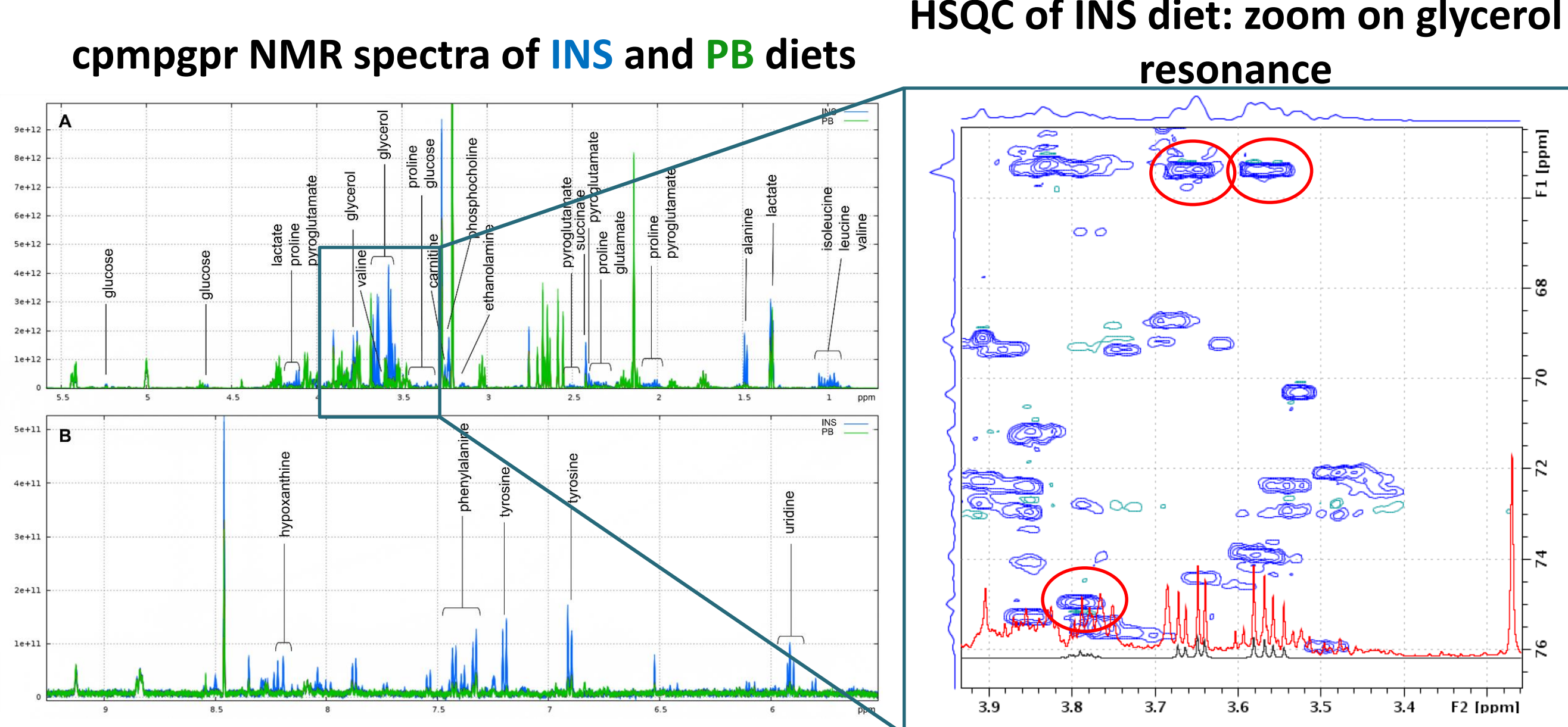


## Approach

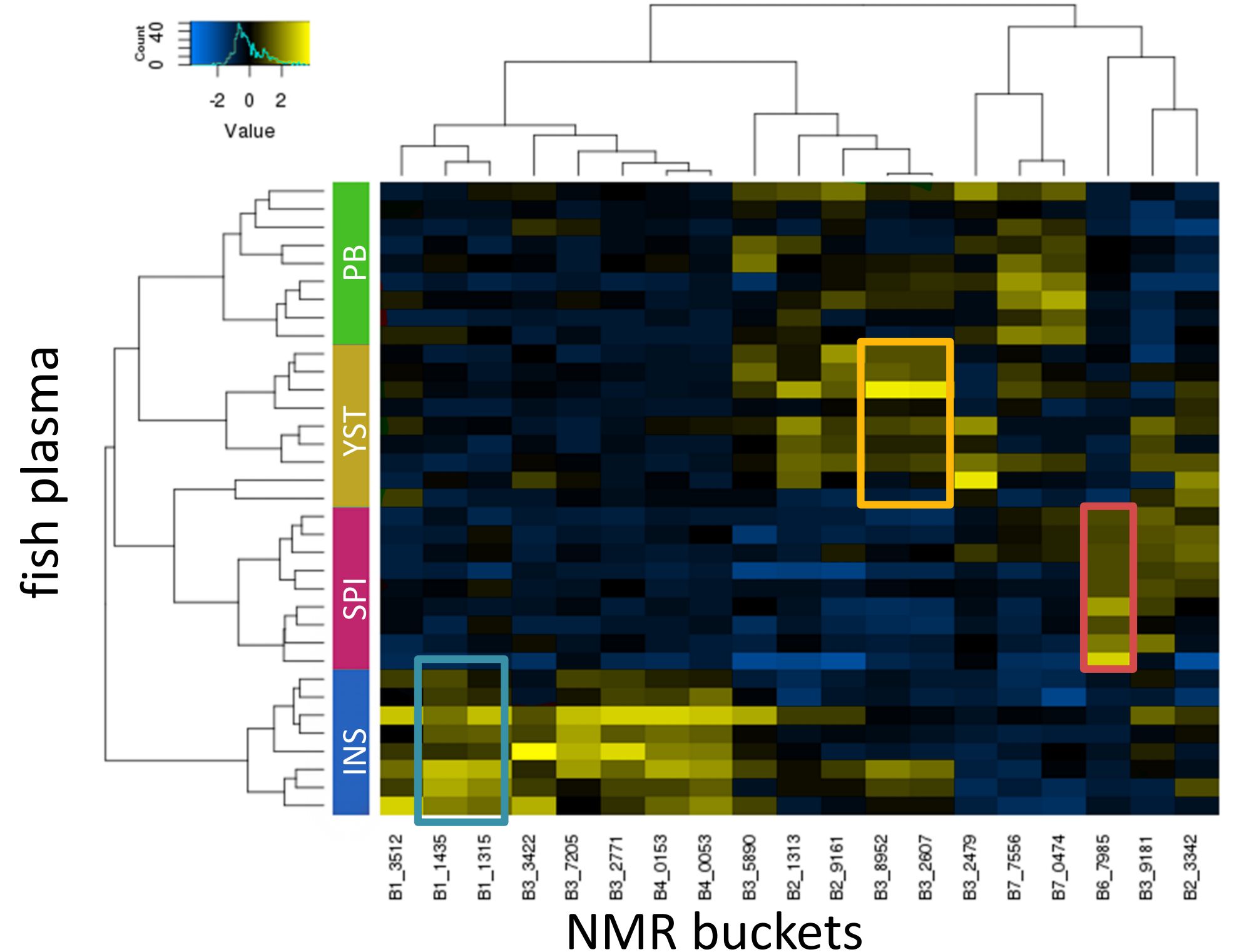


## Major findings

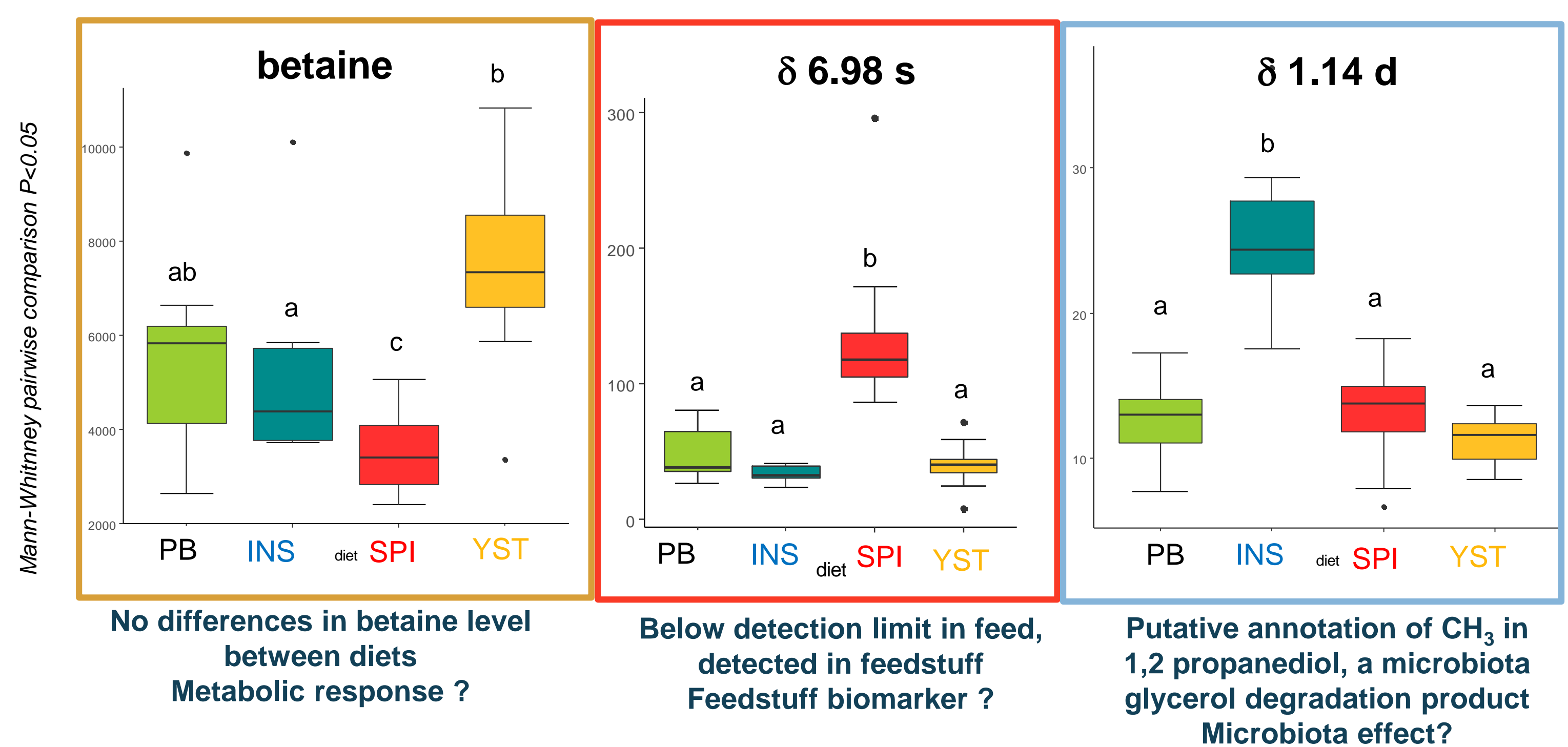
### Identification of specific soluble compounds in diets



### Hierarchical clustering analysis of <sup>1</sup>H-NMR spectral buckets of trout plasma after ANOVA filtration



### Markers in plasma



## Conclusions

- An NMR-based metabolomic approach on feed has led to the identification of **unsuspected compounds** in insect and spirulina diet while only an unidentified singlet was discriminating yeast diet.
- Metabolomics on plasma highlighted **diet effect on plasma metabolome**. Signal identification is in progress for discriminant variables.
- Combining the characterization of diet and metabolic response in plasma **illustrate the interest of integrative metabolomics** to generate new hypotheses on the impact of alternative ingredient.

## Perspectives

- Widen our integrative approach by profiling **liver and muscle**
- Establish **relationships** with zootechnical parameters for the development of new alternative diets

## References

- Collins, S. A.; Øverland, M.; Skrede, A.; Drew, M. D., *Aquaculture* **2013**, *400-401*, pp. 85-100.
- Geay, F.; Ferrarese, S.; Zambonino-Infante, J. L.; Bargelloni, L.; Quentel, C.; Vandeputte, M.; Kaushik, S.; Cahu, C. L.; Mazurais, D., *BMC genomics* **2011**, *12*, p. 522.
- Panserat, S.; Hortopan, G. A.; Plagnes-Juan, E.; Kolditz, C.; Lansard, M.; Skiba-Cassy, S.; Esquerre, D.; Geurden, I.; Médale, F.; Kaushik, S.; Corraze, G., *Aquaculture* **2009**, *294*, pp. 123-131.