



**HAL**  
open science

## Catch me if you can: a biotinylated proteoliposome affinity assay for the investigation of assembly of the MexA-MexB-OprM efflux pump from *Pseudomonas aeruginosa*

Véronique Yvette Ntsogo Enguéné, Alice Verchère, Gilles Phan, Isabelle Broutin, Martin Picard

### ► To cite this version:

Véronique Yvette Ntsogo Enguéné, Alice Verchère, Gilles Phan, Isabelle Broutin, Martin Picard. Catch me if you can: a biotinylated proteoliposome affinity assay for the investigation of assembly of the MexA-MexB-OprM efflux pump from *Pseudomonas aeruginosa*. *Frontiers in Microbiology*, 2015, 6, 10.3389/fmicb.2015.00541 . hal-02150029

**HAL Id: hal-02150029**

**<https://hal.science/hal-02150029>**

Submitted on 6 Jun 2019

**HAL** is a multi-disciplinary open access archive for the deposit and dissemination of scientific research documents, whether they are published or not. The documents may come from teaching and research institutions in France or abroad, or from public or private research centers.

L'archive ouverte pluridisciplinaire **HAL**, est destinée au dépôt et à la diffusion de documents scientifiques de niveau recherche, publiés ou non, émanant des établissements d'enseignement et de recherche français ou étrangers, des laboratoires publics ou privés.

# Catch me if you can: a biotinylated proteoliposome affinity assay for the investigation of assembly of the MexA-MexB-OprM efflux pump from *Pseudomonas aeruginosa*

## OPEN ACCESS

### Edited by:

Klaas M. Pos,  
Goethe University Frankfurt, Germany

### Reviewed by:

Vishvanath Tiwari,  
Central University of Rajasthan, India  
Dinesh Sriramulu,  
Shres Consultancy (Life Sciences),  
India  
Markus Seeger,  
University of Zurich, Switzerland

### \*Correspondence:

Martin Picard,  
Laboratoire de Cristallographie  
et RMN Biologiques, Faculté  
de Pharmacie de Paris, UMR 8015  
CNRS – Université Paris 089  
Descartes, 4, Avenue de  
l'Observatoire, 75270 Paris Cedex  
06, France  
martin.picard@parisdescartes.fr

† These authors have  
contributed equally to this work.

### Specialty section:

This article was submitted to  
Antimicrobials, Resistance and  
Chemotherapy,  
a section of the journal  
Frontiers in Microbiology

Received: 13 February 2015

Accepted: 16 May 2015

Published: 02 June 2015

### Citation:

Enguéné VYN, Verchère A, Phan G,  
Broutin I and Picard M (2015) Catch  
me if you can: a biotinylated  
proteoliposome affinity assay for the  
investigation of assembly of the  
MexA-MexB-OprM efflux pump from  
*Pseudomonas aeruginosa*.  
*Front. Microbiol.* 6:541.  
doi: 10.3389/fmicb.2015.00541

Véronique Yvette Ntsogo Enguéné<sup>†</sup>, Alice Verchère<sup>†</sup>, Gilles Phan, Isabelle Broutin and Martin Picard\*

Laboratoire de Cristallographie et RMN Biologiques, Faculté de Pharmacie de Paris, UMR 8015 CNRS – Université Paris 089 Descartes, Paris, France

Efflux pumps are membrane transporters that actively extrude various substrates, leading to multidrug resistance (MDR). In this study, we have designed a new test that allows investigating the assembly of the MexA-MexB-OprM efflux pump from the Gram negative bacteria *Pseudomonas aeruginosa*. The method relies on the streptavidin-mediated pull-down of OprM proteoliposomes upon interaction with MexAB proteoliposomes containing a biotin function carried by lipids. We give clear evidence for the importance of MexA in promoting and stabilizing the assembly of the MexAB-OprM complex. In addition, we have investigated the effect of the role of the lipid anchor of MexA as well as the role of the proton motive force on the assembly and disassembly of the efflux pump. The assay presented here allows for an accurate investigation of the assembly with only tens of microgram of protein and could be adapted to 96 wells plates. Hence, this work provides a basis for the medium-high screening of efflux pump inhibitors (EPIs).

**Keywords:** multidrug resistance, efflux pump, membrane protein, proteoliposome, macro-molecular assembly

## Introduction

In Gram-negative bacteria, efflux transporters play a major role in the emergence of antibiotic resistance thanks to their ability to export drugs out of the cell (Nikaido, 2009). They are organized as tripartite systems where the RND pump (member of the Resistance, Nodulation, cell Division family) is located in the inner membrane and works in conjunction with a periplasmic protein belonging to the MFP family (Membrane Fusion Protein family), and an outer membrane channel (from the OMF, outer membrane factor family). The cytoplasmic inner membrane protein acts as an energy-dependent pump with broad substrate specificity. The outer membrane protein acts as a porin whereas the third one is thought to stabilize the whole complex. The understanding of these pumps has been largely improved thanks to the publication of high-resolution structures of the various components (Hinchliffe et al., 2013) but the overall mechanism of assembly as well as the stoichiometry of assembly is still a matter of controversy. Two main models have been suggested for a complete

**Abbreviations:**  $\beta$ OG, beta-octyl glucopyranoside; DDM, dodecyl maltoside; EthB, Ethidium bromide. DOPC, 1,2-dioleoyl-sn-glycero-3-phosphocholine; DOPE, 1,2-dioleoyl-sn-glycero-3-phosphoethanolamine; RND, Resistance, Nodulation, cell Division family; OMF, outer membrane factor family; MFP, Membrane Fusion family; ITC, isothermal titration calorimetry; SPR, surface plasmon resonance.

description of the pump assembly. In the first one there is a direct docking of the RND protein on the OMF. In this model, three or six copies of the MFP stabilize the complex. This direct docking model has been comforted by the characterization of a direct interaction between AcrB and TolC by cross-linking (Tamura et al., 2005; Symmons et al., 2009; Weeks et al., 2010) and by *in vitro* surface plasmon resonance (SPR; Tikhonova et al., 2011). A second model where the MFP, assembled in a funnel-like conformation with a stoichiometry of 6-12 copies acts as a bridge between the RND and the OMF, has been comforted by recent electron microscopy studies (Trépout et al., 2010; Du et al., 2014; Kim et al., 2015). This controversy builds up on a series of biochemical and biophysical characterizations. Indeed it is known for long that a genuine tripartite complex can be purified, without prior cross-linking, simply by using a hexahistidine tag on each of the proteins (Tikhonova and Zgurskaya, 2004). The assembly can be also studied *in vivo*, by screening mutants and assessing their ability to restore resistance against antibiotics (see, e.g., Nehme and Poole, 2007) or by taking advantage of the sensitivity of bacterial cells to vancomycin, a very large antibiotic that cannot penetrate the cell by slow passive diffusion (Bavro et al., 2008): Gram negative bacteria are not sensitive to vancomycin but become so if the OMF were to open upon assembly, thereby allowing the antibiotic to diffuse inside the cell. This strategy has been used to study the efflux pump MtrC-MtrD-MtrE (respectively MFP-RND-OMF) from *Neisseria gonorrhoea* (Janganan et al., 2013). The assembly has also been studied *in vitro* by isothermal titration calorimetry (ITC), a technique that allowed for the evaluation of the affinity between components and the establishment of a four-stage model where four sequential, non-cooperative, binding sites are suggested (Touzé et al., 2004). Following similar lines, the assembly of the whole complex has been studied by (SPR; Tikhonova et al., 2011). Upon injection of the protein partners (premixed or in a sequenced manner) on a biochip onto which AcrB was adsorbed, they could monitor assembly in real time. The tripartite complex successfully formed only when the partners were mixed in following a specific sequence of events.

In spite of the valuable and continued efforts for understanding how a tripartite efflux pump assembles, the development of original solutions compatible with medium-high screening of inhibitors is lacking. Antibiotic resistance is an increasing threat complicated by the scarcity of new anti-infective drug families under development. Hence, finding new ways to inhibit efflux pumps is a very promising and important endeavor because it was shown that such inhibitors restore the activity of antibiotics (Lomovskaya et al., 2006; Pages and Amaral, 2009). Lately, we have described a new protocol where transport through the whole pump could be monitored by use of proteoliposomes and respective fluorescent probes liable to report the activity of each partner of the pump (Verchère et al., 2015). As a complementary approach we present here a new strategy that allows investigating the formation of efflux pumps.

## Materials and Methods

1,2-dioleoyl-*sn*-glycero-3-phosphocholine (DOPC) and 1,2-dioleoyl-*sn*-glycero-3-phosphoethanolamine-N-(cap biotinyl);

DOPE, cap biotin) were purchased from Avanti Polar Lipids (reference: 850375C and 870273C, respectively). SM<sub>2</sub> Bio-beads were obtained from Bio-Rad (reference 152-3920). *n*-dodecyl- $\beta$ -D-maltopyranoside (DDM) and *n*-octyl- $\beta$ -D-glucopyranoside ( $\beta$ -OG) was purchased from Anatrace (reference D310LA and O311, respectively).

### Production, Purification of MexB

MexB was purified following the protocol described in (Mokhonov et al., 2005), with minor modifications. Heterologous expression was performed in a C43  $\Delta$ AcrB strain. A pre-culture was grown overnight at 37°C under agitation at 200 rpm and inoculated at OD<sub>600nm</sub> = 0.05 in 2xTY medium containing 100  $\mu$ g/mL of ampicillin. Cell were grown to OD<sub>600nm</sub> = 0.6 at 30°C at 200 rpm and then cooled down at 4°C for 30 min. Isopropyl  $\beta$ -D-1-thiogalactopyranoside (IPTG) was added (1 mg/mL final) and growth was continued overnight at 20°C. Cells were then lysed thanks to a cell-disrupter (Cell-D from Constant LTD) at 4°C after two passages at 2.4 kbar. Membranes were collected upon centrifugation at 100,000 g during 1 h at 4°C. Solubilization was performed overnight at 4°C in 10 mM Bis-Tris pH 7.4; glycerol 20%, 10 mM imidazole and 500 mM NaCl at a 2:1 detergent-to-protein ratio (protein concentration was determined using the Bicinchoninic acid test from Sigma). Purification was performed by affinity chromatography followed by a gel filtration (superose 6 HR, GE).

### Production, Purification of MexA

MexA was purified following the protocol described in (Akama et al., 2004) with minor modifications. Heterologous expression was performed in a C43  $\Delta$ AcrB strain. A pre-culture was grown overnight at 37°C under agitation at 200 rpm and inoculated at OD<sub>600nm</sub> = 0.05 in 2xTY medium containing 25  $\mu$ g/mL of chloramphenicol. Cell were grown to OD<sub>600nm</sub> = 0.6 at 30°C at 200 rpm and then cooled down at 4°C for 30 min. Arabinose was added (0.02% final, w/v) and growth was continued during 2.5 h at 30°C. Cells were then lysed thanks to a cell-disrupter (Cell-D from Constant LTD) at 4°C after two passages at 2.4 kbar. Membranes were collected upon centrifugation at 100,000 g during 1 h at 4°C. Solubilization was performed overnight at room temperature in 20 mM Tris-HCl pH 8, glycerol 10%, 15 mM imidazole at a 40:1 detergent-to-protein ratio (protein concentration was determined using the Bicinchoninic acid test from Sigma). Purification was performed by affinity chromatography followed by a gel filtration (superose 6 HR, GE). A truncated form of MexA "cysteine-less," named MexAnp, without its first 24 residues, has been generated in the laboratory in order to produce and purify a non-palmitoylated, soluble version of the protein.

### Production, Purification of OprM

OprM is purified following the protocol described in (Phan et al., 2010) with minor modifications. In brief, the procedure was exactly that described above for MexA except that an additional solubilization step is added on the membrane pellet: *N*-octylpolyoxyethylene (C<sub>8</sub>POE) is added (2% final, w/v) and the mixture was incubated 30 min at 37°C. C<sub>8</sub>POE is a detergent

that has been shown to specifically solubilize bacterial inner membranes.

### Production, Purification of the RNA Scaffold

Purification of the RNA scaffold, dubbed ref-f, was performed as described in Ponchon et al. (2013). Heterologous expression was achieved in XL1 cells. A pre-culture was grown 10 h at 37°C under shaking at 200 rpm and inoculated at  $OD_{600nm} = 0.05$  in LB medium containing 100  $\mu$ g/mL of ampicillin. Cells were grown overnight to  $OD_{600nm} = 3$  at 37°C at 200 rpm. The expression of ref-f is induced by the addition of 1 mM of IPTG. After 3 h, cells were centrifuged at 7000 g, during 20 min at room temperature. Pellets were re-suspended in 1 L of buffer containing 20 mM Tris, 200 mM NaCl and centrifuged at 7000 g, during 20 min, again at room temperature. Pellets were re-suspended in 40 mM of  $MgSO_4$ , 50 mM  $Na_3$ Citrate pH 5.6. RNA was extracted upon incubation with 40 mL of phenol during 2 h under gentle stirring at room temperature. The mixture was centrifuged 15 min at 3200 g. The supernatant was incubated with two volumes of ethanol and 1/20 of NaCl 5 M, a precipitate was formed and the mixture was centrifuged 5 min at 3200 g. The pellet was dried under the fume hood for 5 min and 10 mL of distilled water was added. The RNA was then purified by anion exchange chromatography.

### Preparation of Unilamellar Vesicles

A mix of lipids consisting of DOPC and DOPE with cap biotin at a 20:1 w/w ratio were dissolved in 25 mM HEPES pH7, 100 mM  $K_2SO_4$  and 2 mM  $MgSO_4$ , to a final concentration of 1 mg/mL. The suspension was then heated for 10 min at 37°C. This solution was then sonicated for 10 min with 30' pulse/30' pause cycles. Liposomes were subsequently passed through 200 nm membranes and then 100 nm membranes thanks to an extruder from Avanti (20 pass for each type of membrane). The homogeneity of the suspension was controlled by Dynamic Light scattering (DLS, Nanosizer Malvern).

### Reconstitution of the Proteins

Liposomes were first solubilized at a 1:1 detergent to lipid ratio (w/w). Solubilization was performed using  $\beta$ -OG for 1 h at 20°C under gentle agitation. Proteins were added to the solubilized liposome suspension at the following lipid-to-protein ratio (w/w): MexB 1:20; MexA, 1:30; OprM, 1:20. OprM proteoliposomes were prepared in the presence of ref-f at 3 mg/ml: MexAB proteoliposomes were prepared in the presence of 3 mM pyranine. Detergent removal was achieved upon 3 consecutive additions of Bio-beads (previously washed with methanol, ethanol and water) at a Bio-bead: detergent ratio of 20 (w/w) for at 1 h at 20°C, followed by an eventual addition, overnight, at the same ratio. MexAB proteoliposomes were purified from untrapped pyranine using a PD-10 desalting column (GE Healthcare). OprM proteoliposomes were purified from untrapped RNA using source Q column (GE Healthcare).

The efficiency of the reconstitution is controlled by running a discontinuous sucrose gradient formed of five layers (60, 20, 10, 5 and 2.5% sucrose). After ultracentrifugation of liposomes on this sucrose gradient overnight at 100,000 g, non-incorporated

proteins are found at the bottom of the tube, while proteoliposomes are trapped at a sucrose interface that corresponds to their intrinsic density. Empty liposomes are recovered higher in the gradient. Different gradient fractions are collected gently and analyzed on SDS-PAGE using Coomassie staining.

### Ethidium Bromide Transport

Ethidium bromide (EthB) transport was measured as previously described (Verchère et al., 2015). Fluorescence measurements were conducted at 25°C using a SAFAS-Xenius spectrofluorimeter. The measurements were performed using the dual-wavelength mode, with excitation and emission wavelengths set at 300 nm and 600 nm, respectively, for the recording of EthB fluorescence and at 455 nm and 509 nm for the recording of pyranine fluorescence. Bandwidths were set at 10 nm. 100  $\mu$ L of OprM proteoliposomes and 100  $\mu$ L of MexAB proteoliposomes were mixed and diluted with 800  $\mu$ L of the liposome reconstitution buffer (25 mM HEPES pH7, 100 mM  $K_2SO_4$ , 2 mM  $MgSO_4$ ). The system was then incubated until a steady baseline was obtained. EthB was then added at 5  $\mu$ M and a pH jump was performed after 20 min incubation.

### Pull Down Assay

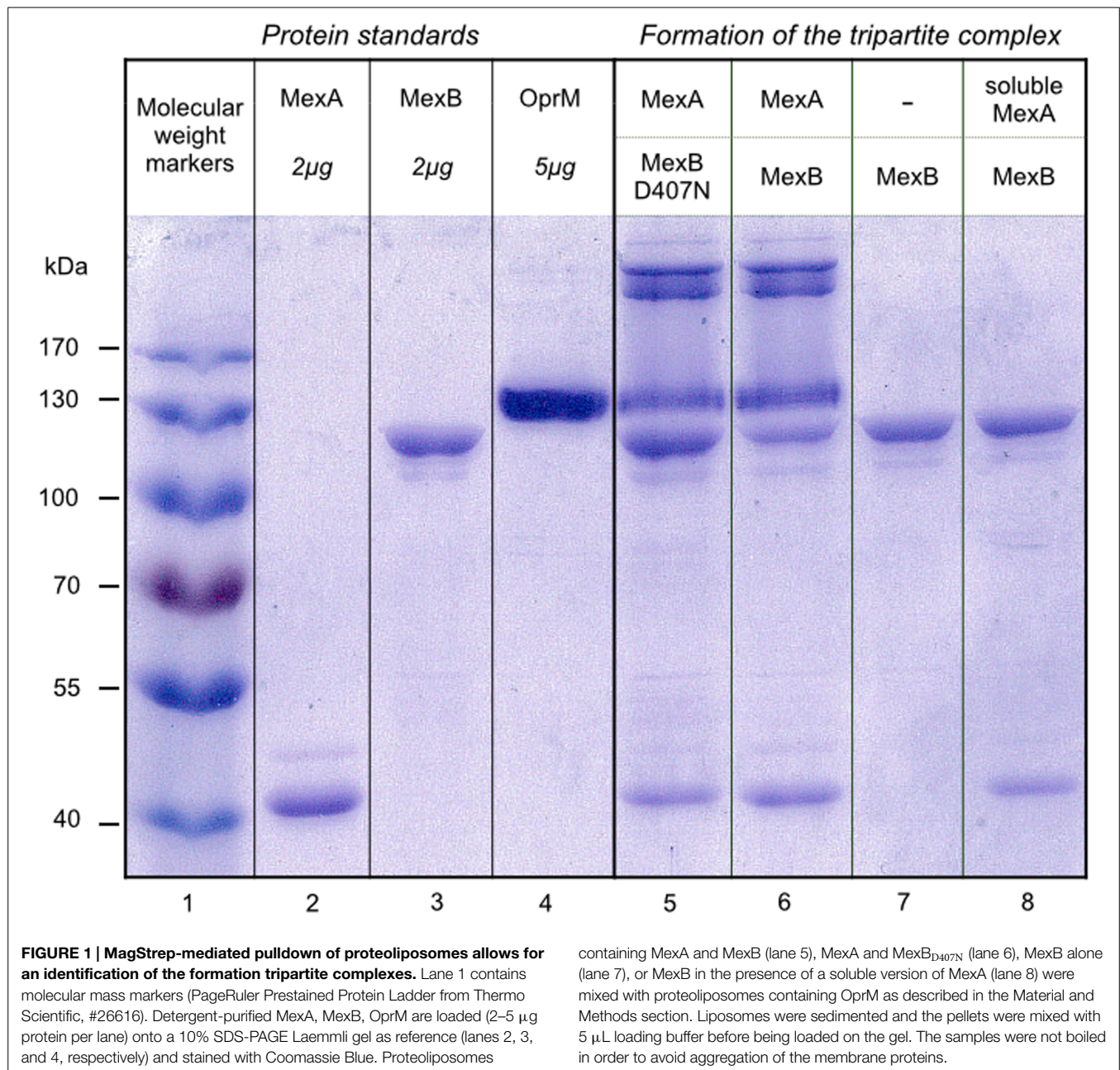
100  $\mu$ L of the respective liposomes were mixed and the suspension was then complemented with 800  $\mu$ L of the liposome reconstitution buffer (25 mM HEPES pH7, 100 mM  $K_2SO_4$ , 2 mM  $MgSO_4$ ), when the assembly is performed under non-energized conditions (see § Investigation of the assembly) or with 800  $\mu$ L of a buffer containing 20 mM Mes Tris pH6, 100 mM  $K_2SO_4$ , 2 mM  $MgSO_4$  when the assembly is performed under pH gradient conditions (see § Liposome pull down as a complementary approach to a transport assay, below). Both buffers have been tuned in order to have the same osmolarity, as measured by a cryoscopic Osmometer (Fisher Scientific, reference: 11900557). Then, the liposomes are incubated for 20 min at room temperature. Finally, 5  $\mu$ L of MagStrep resin (MagStrep "type2HC" high capacity beads, IBA) at 5% (50 mg/mL) was added and the suspension was then placed on a magnetic separator (IBA, ref. 2-1602-000) in order to magnetize down the MexAB-biotin enriched-proteoliposomes and their potential interacting partner. Within a couple of minutes, the target proteins are specifically pelleted. The corresponding pellets were washed twice with 1 ml of 100 mM Tris HCl pH8, 150 mM NaCl before being resuspended directly in a 5X acrylamide gel loading buffer. The proteins were revealed on 10% gels by Laemmli-type SDS-PAGE (Laemmli, 1970) and stained with Coomassie blue.

## Results

### Investigation of the Assembly

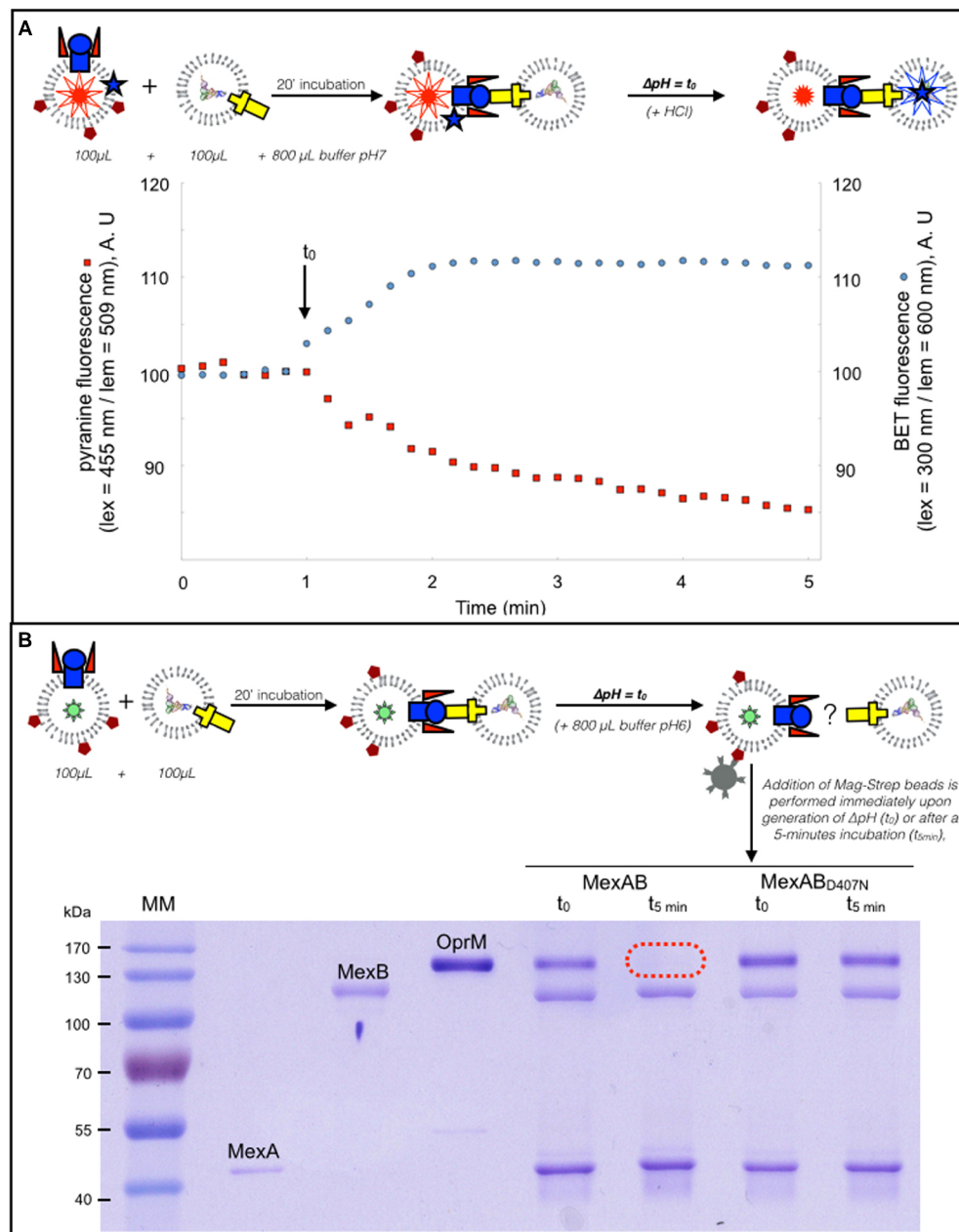
Streptavidin- or streptactin-coated beads are classically used to purify biotinylated proteins, or proteins containing a strep tag, by affinity chromatography procedures. Here, we take advantage of streptavidin-coated magnetic beads to specifically sediment MexAB proteoliposomes containing biotinylated lipids. As can be seen **Figure 1**, when MexAB proteoliposomes are preincubated with OprM proteoliposomes, OprM is eventually found in the





pellet after sedimentation by the streptavidin-coated magnetic beads, thereby providing a clear evidence of the assembly *in vitro* (see the presence of MexA, MexB, and OprM, lane 6, by comparison with the protein standards lane 2, 3, and 4, respectively). Note that in addition to the presence of OprM itself, one can see complexes of very high molecular mass in the upper part of the gel. These complexes were extracted from the gel, incubated for 1.5 h in water at room temperature and treated under mild heating conditions (60°C for 15 min in SDS PAGE loading dye). This revealed that the high molecular mass complexes were OprM aggregates (data not shown). As a control, we have performed the same experiment in the absence of MexA. MexA is a periplasmic protein that is covalently attached to the membrane via a lipid

anchor. When MexB is reconstituted in the absence of MexA, OprM is not found in the pellet (lane 7), in accordance with the well-documented role of MexA on the formation of the pump. Interestingly, when a soluble version of MexA is added on the latter system, the formation of the complex is not restored (lane 8). Once again, this result is reminiscent with studies that showed that the absence of the lipid anchor severely impairs the ability for the efflux pump to form (Ferrandez et al., 2012). It must be put forward that the soluble version of MexA does not restore the ability to form the complex but is nevertheless able to bind to MexB, as both MexA and MexB are identified on lane 8. Finally, we also decided to study if the complex can form if the experiment is performed in the presence of an inactive version of MexB, mutated



**FIGURE 2 | The pull down assay can be adapted in conditions mimicking the transport.** (A) Dual wavelength fluorescence

monitoring of transport. Fluorescence measurements were conducted with excitation and emission wavelengths set for the recording of EthB and pyranine fluorescence. OprM proteoliposomes and of MexAB proteoliposomes were mixed and incubated with EthB (5  $\mu$ M) and a pH jump, indicated by an arrow, was performed after 20 min incubation. The concomitant fluorescence variations of pyranine (see **A**, red trace) and EthB (see **A**, blue trace) is the proof of actual transport of the substrate from one vesicle to the other.

(B) MagStrep-mediated pull-down of proteoliposomes under conditions of a pH gradient. The liposomes used in the experiment shown (A) were enriched with biotinylated lipids in order to investigate the kinetics of the tripartite complex assembly in the context of transport. Samples were prepared as described in the Material and Methods section and were incubated for 20 min before being diluted with a buffer containing 20 mM Mes Tris pH6, 100 mM K<sub>2</sub>SO<sub>4</sub>, 2 mM MgSO<sub>4</sub> in order to generate a pH gradient. Streptavidin-coated magnetic beads were then added either immediately ( $t_0$ ) or after a 5-min incubation ( $t = 5$  min).

in the proton relay pathway (D407N mutant, Guan and Nakae, 2001; Su et al., 2006; Takatsuka and Nikaido, 2006), and in the presence of the palmitoylated version of MexA. Lane 5 shows

that the complex does form in this condition showing that the mutation, located in the transmembrane part of the protein, does not affect the formation of the pump.

## Liposome Pull Down as a Complementary Approach to a Transport Assay

We have previously shown that transport through the whole tripartite pump can be measured thanks to the use proteoliposomes loaded with fluorescent probes that report the activity of MexB and OprM (Verchère et al., 2015). In brief, MexA and MexB are reconstituted in proteoliposomes containing pyranine, while OprM is reconstituted in another kind of proteoliposome in which RNA is encapsulated. Besides, EthB, a substrate of the pump that has DNA-intercalating properties is incubated with the proteins. Pyranine is a pH-dependent probe which fluorescence decreases when pH decreases. EthB fluorescence increases significantly upon intercalation into nucleic acids. Because the pump is energized by the proton motive force (Thanassi et al., 1997; Li et al., 1998; Zgurskaya and Nikaido, 1999), transport can be triggered by generating a change in the pH in the external medium (the pH jump is indicated by an arrow, **Figure 2A**). Efflux is monitored by measuring the simultaneous fluorescence variations of pyranine (see **Figure 2A**, red trace) and EthB (see **Figure 2A**, blue trace): the concomitant fluorescence variations indicate actual transport of the substrate from one vesicle to the other (the increase of EthB fluorescence is ascribed to the intercalation into RNA), mediated by an active transport through the pump (the decrease of pyranine fluorescence is the result of proton counter-transport, hence the acidification of the liposome, by MexB). If the same experiment is now performed in the presence of proteoliposomes where the MexAB<sub>D407N</sub> inactive mutant is used, both the pyranine and EthB fluorescence signals remain steady (see Verchère et al., 2015). The liposomes used in the experiment shown **Figure 2A** were enriched with biotinylated lipids in order to investigate the kinetics of the tripartite complex assembly in the context of transport, using the pull-down protocol on the very same proteoliposome preparation. To that purpose the proteoliposomes were incubated as described in the previous paragraph except that the buffer used to dilute the liposomes was now more acidic than that in which the proteoliposomes were prepared. As a consequence, a pH gradient is generated across the liposome membrane. As can be seen **Figure 2B**, the tripartite complex is observed upon generation of the pH gradient, as OprM is detected together with MexA and MexB (see “MexAB samples” prepared at  $t_0$ ). However, after transport has reached steady state (i.e., within a couple of minutes), the complex has seemingly disappeared. Indeed, OprM does no longer interact with MexAB (see the “MexAB samples” prepared at  $t = 5$  min). Interestingly, when the same experiment is performed in the presence of the D407N mutant, the complex remains stable (see “MexAB<sub>D407N</sub> samples” prepared at  $t_0$  and at  $t = 5$  min).

## Discussion

### An Original Technique Allowing to Monitor Transport and Assembly

The formation of the macromolecular complex formed by MexA, MexB, and OprM has been studied for long, by use of various biochemical and biophysical techniques. These studies made it possible to understand key aspects of the mechanism of an efflux

pump but they are rather demanding in term of protein quantity (ITC) and methodology (in SPR, the target protein must be attached on the sensor chip and must remain stable throughout the whole titration experiment). As presented here, our protocol is much more versatile, it is compatible with a medium-large screening of potential inhibitors as it does not require large amounts of protein (typically 10  $\mu$ g of protein is necessary for one measurement). Finally, this protocol can be scaled up in 96-wells. In such a case, SDS-PAGE would not be the best identification option but we have adapted the protocol by using OprM proteoliposomes enriched with lipids grafted with a rhodamine function. In such a context, the purple color of the liposomes remains in the supernatant when the complex is not formed, the purple color being lost in the pellet if the complex forms (data not shown). Hence, the assembly could be simply monitored by colorimetry. Our methodology finds its limit in being only qualitative. Indeed, the variability of the efficiency of reconstitution, and the reproducibility of the procedure (washing of the pellets, resuspension in the loading buffer) precludes from any quantitative conclusion. Hence, we can not claim any information on the stoichiometry.

### Role of MexA

The results presented **Figure 1** show that MexA is absolutely necessary for the assembly, a result in accordance with previous results. Tikhonova et al. (2011) showed that if an His-tag is located on AcrA or AcrB, a tripartite complex can be purified in measurable quantities from bacterial native membranes. However, if the His-tag is placed on TolC, only traces of the complex are purified. AcrA is thus indispensable for AcrB to co-fractionate with OprM (Tikhonova and Zgurskaya, 2004). The interaction between the different partners has also been investigated using ITC, which allows evaluating the affinity between two components (Touzé et al., 2004). When the interaction between AcrB and TolC is investigated by ITC measurement, no stable interaction is detected. This was interpreted by the fact that AcrA is required for the interaction between AcrA and TolC.

Finally, the efflux pump MtrC-MtrD-MtrE (respectively MFP-RND-OMF) from *Neisseria gonorrhoea* has also been intensely investigated *in vivo* by Janganan et al. (2013). They made use of vancomycin susceptibility to monitor the assembly of the OMF with its RND and MFP partners (Janganan et al., 2013). Gram negative bacteria are not susceptible to vancomycin but become so if the OMF were to open and let the antibiotic diffuse inside the cell. Interestingly if the MFP is expressed together with the OMF, cells become sensitive to vancomycin, meaning that the MFP is required for the OMF to open. Note that, it was shown that a truncated version of the MFP, consisting of the alpha helical hairpin domain only, is not able to open the OMF. Finally the assembly of the whole complex was monitored by SPR (Tikhonova et al., 2011), showing that AcrA-AcrB and AcrA-TolC complexes can be detected. If palmitoylated AcrA and TolC are premixed and then injected on AcrB adsorbed on solid support, the complex does not form, probably because TolC inhibits the interaction between AcrB and AcrA.

The reason for the fact that the soluble MexA does not restore the formation of the complex remains an open question. It could very well be that this construction is intrinsically unable to make



the pump assemble but one can also imagine that this inability to form a complex is purely thermodynamic. Indeed, the lipid anchor may be present for restricting the diffusion of the protein to a two-dimensional space, thereby allowing a more probable interaction with MexB. However, the role of the N-terminal lipid part of AcrA, was investigated in real time by SPR (Tikhonova et al., 2011) and it was shown that when the MFP lacks its lipid anchor, no oligomerization of the MFP is detected. Considering that AcrA binds AcrB as a dimer, it seems probable that the lipid anchor has a genuine effect on the assembly. We have to stress that the observation that the soluble version of MexA is nevertheless able to bind MexB (see **Figure 1**, lane 8) is in contradiction with the fact that Tikhonova et al. showed that the binding of soluble AcrA to AcrB is very weak at pH7.5 and pH6.

### Role of pmf on the Assembly

We show that the mutation within the proton relay pathway does not impair the assembly, which indicates that the efflux pump assembly does not require transport activity. Again, this result is in line with the work of Tikhonova and Zgurskaya regarding the assembly of the AcrAB-TolC pump from native bacterial membranes (Tikhonova and Zgurskaya, 2004) where they showed that if the corresponding non-functional mutant of AcrB (AcrB Asp408Ala) is expressed, the complex is still co-purified. Besides, if the proton motive force is disrupted in the cells (using CCCP, valinomycin and/or nigericin) the complex is also co-purified.

### Role of pmf on the Disassembly

In a remarkable series of papers, Bavro et al. (2008) previously investigated the energy dependence of the pump assembly, by use of non-functional mutants of MtrD mutated in residues involved in the proton-transducing pathway (Asp405, Asp406, and Lys948). If these mutants are expressed with the MFP and the OMF, cells remain insensitive to vancomycin; indicating that the efflux pump must dissociate under the proton motive force. Although very elegant, this conclusion is indirect and is realized in the context of the bacteria where additional factors could be

suspected. **Figure 2** provides direct and non-ambiguous support for the fact that the proton motive force indeed promotes disassembly of the complex, as evidenced by i) the disappearing of OprM when the wild type pump has reached its steady state and ii) by the maintaining of the assembly when the D407N mutant, defective in proton translocation, is used.

## Conclusion

We were able to detect the assembly of an efflux pump after it has been reconstituted into proteoliposomes. We could discriminate between conditions that allow, or favor, the formation of the complex and could also confirm that MexA is mandatory for the assembly to take place. Hence, this is in accordance with several studies obtained in recent years on that matter. Our reconstitution method and the subsequent characterization approach described in the present work allow us to consider further studies of reconstitutions including proteins mutated at various positions, in order to shed light on the actual determinants of transport in a simple system in a bottom-up approach.

## Author Contributions

Conceived and designed the experiments: MP. Performed the experiments: YN, AV, MP. Wrote the paper: AV, GP, IB, MP.

## Acknowledgments

This study was supported by the Agence Nationale de la Recherche (ANR-12-BSV8-0010-01). YN was supported by both Vaincre la Mucoviscidose and the Association Grégory Lemarchal. AV was supported by a grant from Région Ile-de-France (DIM-Malinf 110058). We thank Klaas Martinus Pos for providing us the C43  $\Delta$  AcrB strain and Henrietta Venter for the D407N MexB plasmid. We thank Manuela Dezi for her help in the purification of the proteins, and Houssain Benabdelhak, Arnaud Ducruix and Philippe Bénas for their helpful comments on the manuscript. We thank Nathalie Sisattana for technical assistance.

## References

- Akama, H., Matsuura, T., Kashiwagi, S., Yoneyama, H., Narita, S.-I., Tsukihara, T., et al. (2004). Crystal structure of the membrane fusion protein, MexA, of the multidrug transporter in *Pseudomonas aeruginosa*. *J. Biol. Chem.* 279, 25939–25942. doi: 10.1074/jbc.C400164200
- Bavro, V. N., Pietras, Z., Furnham, N., Pérez-Cano, L., Fernández-Recio, J., Pei, X. Y., et al. (2008). Assembly and channel opening in a bacterial drug efflux machine. *Mol. Cell* 30, 114–121. doi: 10.1016/j.molcel.2008.02.015
- Du, D., Wang, Z., James, N. R., Voss, J. E., Klimont, E., Ohene-Agyei, T., et al. (2014). Structure of the AcrAB-TolC multidrug efflux pump. *Nature* 509, 512–515. doi: 10.1038/nature13205
- Ferrandez, Y., Monlezun, L., Phan, G., Benabdelhak, H., Benas, P., Ulryck, N., et al. (2012). Stoichiometry of the MexA-OprM binding, as investigated by blue native gel electrophoresis. *Electrophoresis* 33, 1282–1287. doi: 10.1002/elps.201100541
- Guan, L., and Nakae, T. (2001). Identification of essential charged residues in transmembrane segments of the multidrug transporter MexB of *Pseudomonas aeruginosa*. *J. Bacteriol.* 183, 1734–1739. doi: 10.1128/JB.183.5.1734-1739.2001
- Hinchliffe, P., Symmons, M. F., Hughes, C., and Koronakis, V. (2013). Structure and operation of bacterial tripartite pumps. *Annu. Rev. Microbiol.* 67, 221–242. doi: 10.1146/annurev-micro-092412-155718
- Janganan, T. K., Bavro, V. N., Zhang, L., Borges-Walmsley, M. I., and Walmsley, A. R. (2013). Tripartite efflux pumps: energy is required for dissociation, but not assembly or opening of the outer membrane channel of the pump. *Mol. Microbiol.* 88, 590–602. doi: 10.1111/mmi.12211
- Kim, J.-S., Jeong, H., Song, S., Kim, H.-Y., Lee, K., Hyun, J., et al. (2015). Structure of the tripartite multidrug efflux pump AcrAB-TolC suggests an alternative assembly mode. *Mol. Cells* 38, 180–186. doi: 10.14348/molcells.2015.2277
- Laemmli, U. K. (1970). Cleavage of structural proteins during the assembly of the head of bacteriophage T4. *Nature* 227, 680–685.
- Li, X. Z., Zhang, L., and Poole, K. (1998). Role of the multidrug efflux systems of *Pseudomonas aeruginosa* in organic solvent tolerance. *J. Bacteriol.* 180, 2987–2991.
- Lomovskaya, O., Zgurskaya, H. I., Totrov, M., and Watkins, W. J. (2006). Waltzing transporters and “the dance macabre” between humans and bacteria. *Nat. Rev. Drug Discov.* 6, 56–65. doi: 10.1038/nrd2200
- Mokhonov, V., Mokhonova, E., Yoshihara, E., Masui, R., Sakai, M., Akama, H., et al. (2005). Multidrug transporter MexB of *Pseudomonas aeruginosa*: overexpression, purification, and initial structural characterization. *Error* 40, 91–100. doi: 10.1016/j.pep.2004.10.002
- Nehme, D., and Poole, K. (2007). Assembly of the MexAB-OprM multidrug pump of *Pseudomonas aeruginosa*: component interactions defined by the study



- of pump mutant suppressors. *J. Bacteriol.* 189, 6118–6127. doi: 10.1128/JB.00718-07
- Nikaido, H. (2009). Multidrug resistance in bacteria. *Annu. Rev. Biochem.* 78, 119–146. doi: 10.1146/annurev.biochem.78.082907.145923
- Pages, J. M., and Amaral, L. (2009). Mechanism of drug efflux and strategies to combat them: challenging the efflux pump of Gram-negative bacteria. *Biochim. Biophys. Acta* 1794, 826–833. doi: 10.1016/j.bbapap.2008.12.011
- Phan, G., Benabdelhak, H., Lascombe, M.-B., Benas, P., Rety, S., Picard, M., et al. (2010). Structural and dynamical insights into the opening mechanism of *P. aeruginosa* OprM Channel. *Structure* 18, 507–517. doi: 10.1016/j.str.2010.01.018
- Ponchon, L., Catala, M., Seijo, B., El Khouri, M., Dardel, F., Nonin-Lecomte, S., et al. (2013). Co-expression of RNA-protein complexes in *Escherichia coli* and applications to RNA biology. *Nucleic Acids Res.* 41, e150–e150. doi: 10.1093/nar/gkt576
- Su, C. C., Li, M., Gu, R., Takatsuka, Y., McDermott, G., Nikaido, H., et al. (2006). Conformation of the AcrB multidrug efflux pump in mutants of the putative proton relay pathway. *J. Bacteriol.* 188, 7290–7296. doi: 10.1128/JB.00684-06
- Symmons, M. F., Bokma, E., Koronakis, E., Hughes, C. and Koronakis, V. (2009). The assembled structure of a complete tripartite bacterial multidrug efflux pump. *Proc. Natl. Acad. Sci.* 106, 7173–7178.
- Takatsuka, Y., and Nikaido, H. (2006). Threonine-978 in the transmembrane segment of the multidrug efflux pump AcrB of *Escherichia coli* is crucial for drug transport as a probable component of the proton relay network. *J. Bacteriol.* 188, 7284–7289. doi: 10.1128/JB.00683-06
- Tamura, N., Murakami, S., Oyama, Y., Ishiguro, M., and Yamaguchi, A. (2005). Direct interaction of multidrug efflux transporter acrb and outer membrane channel tolC detected via site-directed disulfide cross-linking<sup>†</sup>. *Biochemistry* 44, 11115–11121. doi: 10.1021/bi050452u
- Thanassi, D. G., Cheng, L. W., and Nikaido, H. (1997). Active efflux of bile salts by *Escherichia coli*. *J. Bacteriol.* 179, 2512–2518.
- Tikhonova, E. B., Yamada, Y., and Zgurskaya, H. I. (2011). Sequential mechanism of assembly of multidrug efflux pump AcrAB-TolC. *Chem. Biol.* 18, 454–463. doi: 10.1016/j.chembiol.2011.02.011
- Tikhonova, E. B., and Zgurskaya, H. I. (2004). AcrA, AcrB, and TolC of *Escherichia coli* form a stable intermembrane multidrug efflux complex. *J. Biol. Chem.* 279, 32116–32124. doi: 10.1074/jbc.M402230200
- Touzé, T., Eswaran, J., Bokma, E., Koronakis, E., Hughes, C., and Koronakis, V. (2004). Interactions underlying assembly of the *Escherichia coli* AcrAB-TolC multidrug efflux system. *Mol. Microbiol.* 53, 697–706. doi: 10.1111/j.1365-2958.2004.04158.x
- Trépout, S., Taveau, J. C., Benabdelhak, H., Granier, T., Ducruix, A., Frangakis, A. S., et al. (2010). Structure of reconstituted bacterial membrane efflux pump by cryo-electron tomography. *Biochim. Biophys. Acta* 1798, 1953–1960. doi: 10.1016/j.bbamem.2010.06.019
- Verchère, A., Dezi, M., Adrien, V., Broutin, I., and Picard, M. (2015). *In vitro* transport activity of the fully assembled MexAB-OprM efflux pump from *Pseudomonas aeruginosa*. *Nat. Commun.* 6, 6890. doi: 10.1038/ncomms7890
- Weeks, J. W., Celaya-Kolb, T., Pecora, S., and Misra, R. (2010). AcrA suppressor alterations reverse the drug hypersensitivity phenotype of a TolC mutant by inducing TolC aperture opening. *Mol. Microb.* 75, 1468–1483. doi: 10.1111/j.1365-2958.2010.07068.x
- Zgurskaya, H. I., and Nikaido, H. (1999). Bypassing the periplasm: reconstitution of the AcrAB multidrug efflux pump of *Escherichia coli*. *Proc. Natl. Acad. Sci. U.S.A.* 96, 7190–7195. doi: 10.1073/pnas.96.13.7190

**Conflict of Interest Statement:** The authors declare that the research was conducted in the absence of any commercial or financial relationships that could be construed as a potential conflict of interest.

Copyright © 2015 Enguéné, Verchère, Phan, Broutin and Picard. This is an open-access article distributed under the terms of the Creative Commons Attribution License (CC BY). The use, distribution or reproduction in other forums is permitted, provided the original author(s) or licensor are credited and that the original publication in this journal is cited, in accordance with accepted academic practice. No use, distribution or reproduction is permitted which does not comply with these terms.