



HAL
open science

Actuator line method applied to grid turbulence generation for large-eddy simulations

Félix Houtin-Mongrolle, Laurent Bricteux, Pierre Bénard, Ghislain Lartigue,
Vincent Moureau, Julien Reveillon

► **To cite this version:**

Félix Houtin-Mongrolle, Laurent Bricteux, Pierre Bénard, Ghislain Lartigue, Vincent Moureau, et al.. Actuator line method applied to grid turbulence generation for large-eddy simulations. ERCOFTAC WORKSHOP DIRECT AND LARGE EDDY SIMULATION 12 (DLES12), Jun 2019, Madrid, Spain. hal-02149266

HAL Id: hal-02149266

<https://hal.science/hal-02149266v1>

Submitted on 11 Feb 2021

HAL is a multi-disciplinary open access archive for the deposit and dissemination of scientific research documents, whether they are published or not. The documents may come from teaching and research institutions in France or abroad, or from public or private research centers.

L'archive ouverte pluridisciplinaire **HAL**, est destinée au dépôt et à la diffusion de documents scientifiques de niveau recherche, publiés ou non, émanant des établissements d'enseignement et de recherche français ou étrangers, des laboratoires publics ou privés.

ACTUATOR LINE METHOD APPLIED TO GRID TURBULENCE GENERATION FOR LARGE-EDDY SIMULATIONS

F. Houtin–Mongrolle¹, L. Bricteux², P. Benard¹, G. Lartigue¹, V. Moureau¹, J. Reveillon¹

¹ CORIA, CNRS UMR6614, Normandie Université, INSA and University of Rouen, 76801
Saint-Etienne-du-Rouvray, France
felix.houtin-mongrolle@coria.fr

² Université de Mons (UMONS), Polytechnic Faculty, Belgium

INTRODUCTION

The constant growth of computational resources allows nowadays to perform Large-Eddy Simulation (LES) on realistic flow configurations. In this framework, it is important to properly model the turbulence inflow at a low computational cost. This study addresses wind tunnel applications where the object under investigation is downstream of a turbulence grid. This grid aims to generate a highly turbulent flow and a sheared velocity profile for further use in wind turbines applications. In this work, an original strategy based on the Actuator Line Method (ALM) is proposed to emulate the grid and generate realistic flow structures downstream. The proposed method is compared to usual turbulence injection strategies as well as a geometrical resolution of the turbulence generation grid [1].

ACTUATOR LINE METHOD

Definition

In the domain of wind energy, the ALM is commonly used to model the effect of wind turbines blades on a flow. Indeed, this method allows to model the influence of an object on a flow by imposing body forces distributed along the geometry. These forces are computed from the incident wind and the lift and drag aerodynamics coefficients. The overall strategy avoids handling complex and/or moving geometry. Following the formalism used in [2], the local lift L and drag D forces experienced by each element of the grid are computed as:

$$L = \frac{1}{2} \rho v_{rel}^2 l w C_L(\alpha), \quad (1)$$

$$D = \frac{1}{2} \rho v_{rel}^2 l w C_D(\alpha), \quad (2)$$

where C_L and C_D are the lift and drag coefficients, α is the local angle of attack, v_{rel} is the local velocity relative to the geometry, l is a local length, i.e. the chord of the emulated profile, and w is the actuator element width, i.e. the distance between two actuator elements.

The body force is then projected on the Eulerian grid using a mollifying function η_ϵ (see e.g. [2, 3]), defined as:

$$\eta_\epsilon(d) = \frac{1}{\epsilon^3 \pi^{3/2}} \exp \left[- \left(\frac{d}{\epsilon} \right)^2 \right], \quad (3)$$

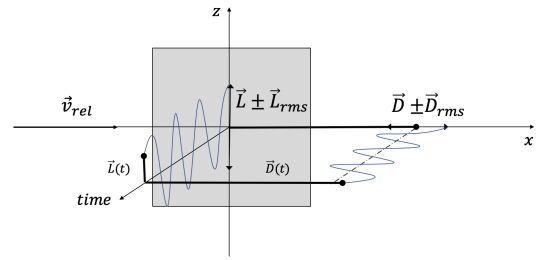


Figure 1: Oscillating lift and drag forces generated on an actuator element.

with d being the distance between a grid node and the element position and ϵ a mollifier width parameter set from an estimation of the local cell size Δx such as $\epsilon = 2\Delta x$. Thus, it provides a smooth force \mathbf{f} distributed on the grid obtained from the forces concentrated on a given element. Finally, the body force source term \mathbf{f} in the momentum equation can be expressed as:

$$\mathbf{f}(x, y, z, t) = - \sum_{e=1}^N (L(t)\mathbf{e}_z + D(t)\mathbf{e}_x) \eta(d). \quad (4)$$

This methodology is implemented into the YALES2 flow solver [7]. YALES2 is a low Mach-number massively-parallel finite-volume LES solver using 4th-order numerical schemes on unstructured meshes. In this study, the subgrid Reynolds stress tensor is modeled using the σ -model [4].

Parametrization for wind tunnel turbulence grid

This study focuses on turbulence generation based on a square cylinder grid. Different experimental configurations (see e.g. [5] and [6]) showed that the aerodynamic forces of a static cylinder depends on the rod-to-rod spacing, on the rods-to-wall distance and fluctuates at a given frequency f directly linked to the Strouhal number St as $f = St v_{rel}/l$, where v_{rel} is the relative velocity and l the local length. Therefore, a fluctuation on the Drag and Lift coefficient is added to the previous formalism as pictured in Fig. 1 and varying in time t as (equation only given for lift force coefficient):

$$C_L(t) = \langle C_L \rangle + C_{L,rms} \sqrt{2} \sin(2\pi f t + \bar{\varphi}), \quad (5)$$

where $\langle C_L \rangle$ is the mean lift coefficient, $C_{L,rms}$ its fluctuating

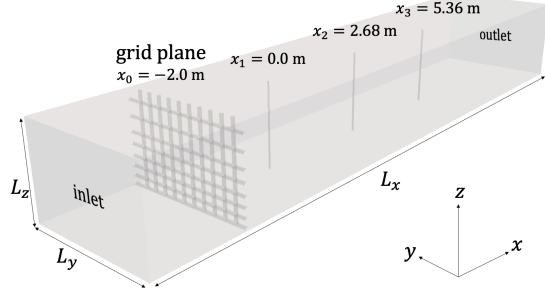


Figure 2: Visualization of the computation domain of NTNU BT5 with grid only. The three downstream black vertical lines refer to experimental measurements.

amplitude and φ is a random phase different on each rod. The aim of this random phase is to de-synchronize the vortex shedding of the rods and create a fully turbulent flow.

APPLICATION TO GRID TURBULENCE GENERATION IN A WIND TUNNEL

The method proposed here is applied to the turbulence generation system of the “NTNU Blind Test 5” [8] wind tunnel. Its dimensions are (see Fig. 2): $L_x \times L_y \times L_z = 14 \times 2.71 \times 1.801 \text{ m}^3$. The turbulence grid is composed of $47 \times 47 \text{ mm}^2$ square cylinder rods as described in [9]. The grid presents a constant spacing in the horizontal direction 0.24 m and the horizontal rods are arranged with an increasing spacing from the floor to the roof (see [9] for the detailed values). This aims to generate a sheared flow.

The aim of this work is to assess the ALM (case B) and compare it to other strategies: a resolved flow around the rods (case A) and a Homogeneous Isotropic Turbulence (HIT) injection with sheared velocity injection (case C). Each of these methods requires different mesh sizes: for case A, the mesh size around the rods need to be fine enough to capture the boundary layer. This significantly increases the number of elements in the grid with a total of around 26×10^6 tetrahedra for case A. The two other methods do not require such a fine meshing with approximately 20×10^6 elements.

The preliminary results are displayed in Fig. 3, representing the vorticity field in mid- xy plane. First, flow dynamics between the grid and x_1 -plane measurement seem different between the three cases: the coherent structures destabilization length is longer for case B compared to case A. After the x_1 -plane, the ALM case results appear in accordance with the rods-resolved case with similar turbulence dynamics. The case with HIT injection provides modest performances.

This analysis is confirmed thanks to Fig. 4 plotting the time-averaged axial velocity and the turbulence intensity at x_1 -position. As expected on velocity, case C perfectly retrieve its imposed shear velocity profile while cases A and B differs up to 10% compared to the experiment. For each approach, a turbulence intensity flat profile is retrieved with a satisfying agreement on the amplitude. All these results are still under investigation with a specific attention on computing performances.

CONCLUSIONS AND PERSPECTIVES

An original method to emulate grid turbulence generation has been proposed and assessed using the “NTNU blind test

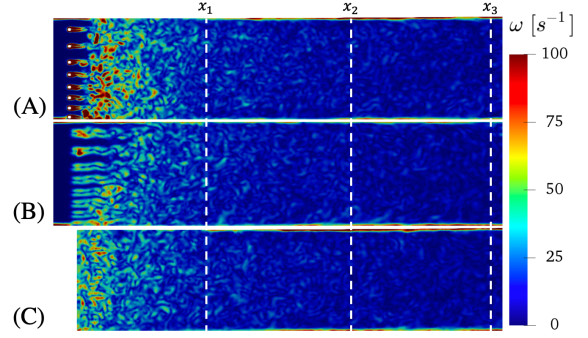


Figure 3: Vorticity magnitude in the xz -plane.

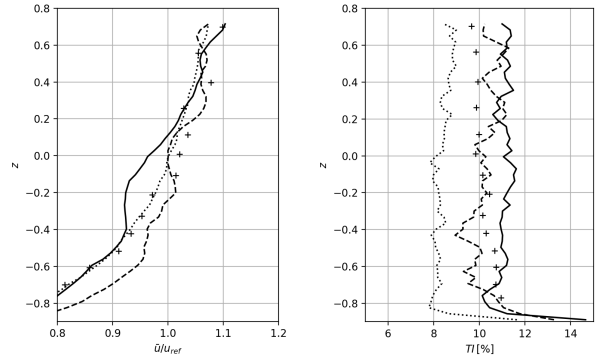


Figure 4: Vertical profiles of mean wind velocity (left) and turbulence intensity (right) at $x_1 = 0 \text{ m}$: experiment (+), case A (—), case B (---) and case C (·····).

5” wind tunnel experiment. The preliminary results presented in this extended abstract are promising: the method allows to produce turbulence that fairly reproduces the characteristics of the turbulent flow. ALM and THI parameters still need to be adjusted and a further analysis will be conducted on different mesh refinement levels.

REFERENCES

- [1]Wu, X. : Inflow Turbulence Generation Methods, *Annu. Rev. Fluid Mech.*, **49**, 23–49 (2017).
- [2]Peet Y , Fischer P , Conzelmann G , Kotamarthi V . : Actuator Line Aerodynamics Model with Spectral Elements, *51st AIAA Aerospace Sciences Meeting*, (2013).
- [3]P. Benard, A. Viré, V. Moureau, G. Lartigue, L. Beaudet, P. Deglaire, L. Bricteux : Large-Eddy Simulation of wind turbines wakes including geometrical effects, *Comput. Fluids*, **17** (2018).
- [4]F. Nicoud, H. Baya Toda, O. Cabrit, S. Bose, J. Lee : Using singular values to build a subgrid-scale model for large eddy simulations, *Phys. Fluids*, **23** (2011).
- [5]M. Mahbub Alam, Y. Zhou, X.W. Wang : The wake of two side-by-side square cylinders, *J. Fluid Mech.*, **669**, 432–471 (2011).
- [6]R.J. Martinuzzi, S.C.C. Bailey, G.A. Kopp : Influence of wall proximity on vortex shedding from a square cylinder, *Exp. Fluids*, **34**, 585–596, (2013).
- [7]V. Moureau and P. Domingo and L. Vervisch : Design of a massively parallel CFD code for complex geometries, *C.R. Mec.*, **339(2/3)**, 141–148, (2011).
- [8]F. Mühle, J. Schottler, J. Bartl, et al. : Blind test comparison on the wake behind a yawed wind turbine, *Wind Energ. Sci.*, **3**, 883–903, (2018).
- [9]L. Stran, F. Mühle, J. Schottler, J. Bartl, Mi. Hölling, M.S. Adaramola : The wake behind a yawed wind turbine, *Invitation to the 2017 Blind test 5 workshop*, (2017).