



HAL
open science

Molecular analysis of a high-mass prestellar core candidate in W43-MM1

J. Molet, N. Brouillet, T. Nony, Antoine Gusdorf, F. Motte, D. Despois, F.
Louvet, Sylvain Bontemps, Fabrice Herpin

► **To cite this version:**

J. Molet, N. Brouillet, T. Nony, Antoine Gusdorf, F. Motte, et al.. Molecular analysis of a high-mass prestellar core candidate in W43-MM1. *Astronomy and Astrophysics - A&A*, 2019, 626, pp.A132. 10.1051/0004-6361/201935497 . hal-02144700

HAL Id: hal-02144700

<https://hal.science/hal-02144700v1>

Submitted on 24 Jun 2019

HAL is a multi-disciplinary open access archive for the deposit and dissemination of scientific research documents, whether they are published or not. The documents may come from teaching and research institutions in France or abroad, or from public or private research centers.

L'archive ouverte pluridisciplinaire **HAL**, est destinée au dépôt et à la diffusion de documents scientifiques de niveau recherche, publiés ou non, émanant des établissements d'enseignement et de recherche français ou étrangers, des laboratoires publics ou privés.

Molecular analysis of a high-mass prestellar core candidate in W43-MM1

J. Molet¹, N. Brouillet¹, T. Nony², A. Gusdorf^{3,4}, F. Motte^{2,5}, D. Despois¹, F. Louvet⁶, S. Bontemps¹, and F. Herpin¹

¹ Laboratoire d'astrophysique de Bordeaux, Université de Bordeaux, CNRS, B18N, allée Geoffroy Saint-Hilaire, 33615 Pessac, France
e-mail: jordan.molet@u-bordeaux.fr

² Université Grenoble Alpes, CNRS, Institut de Planétologie et d'Astrophysique de Grenoble, 38000 Grenoble, France

³ Laboratoire de Physique de l'École normale supérieure, ENS, Université PSL, CNRS, Sorbonne Université, Université Paris-Diderot, Sorbonne Paris Cité, Paris, France

⁴ LERMA, Observatoire de Paris, PSL Research University, CNRS, Sorbonne Université, UPMC Université Paris 06, 75231 Paris, France

⁵ AIM Paris-Saclay Département d'Astrophysique, CEA, CNRS, Univ. Paris Diderot, CEA-Saclay, 91191 Gif-sur-Yvette Cedex, France

⁶ Departamento de Astronomía de Chile, Universidad de Chile, Santiago, Chile

Received 19 March 2019 / Accepted 11 May 2019

ABSTRACT

Context. High-mass analogues of low-mass prestellar cores are searched for to constrain the models of high-mass star formation. Several high-mass cores, at various evolutionary stages, have been recently identified towards the massive star-forming region W43-MM1 and amongst them a high-mass prestellar core candidate.

Aims. We aim to characterise the chemistry in this high-mass prestellar core candidate, referred to as W43-MM1 core #6, and its environment.

Methods. Using ALMA high-spatial resolution data of W43-MM1, we have studied the molecular content of core #6 and a neighbouring high-mass protostellar core, referred to as #3, which is similar in size and mass to core #6. We first subtracted the continuum emission using a method based on the density distribution of the intensities on each pixel. Then, from the distribution of detected molecules, we identified the molecules centred on the prestellar core candidate (core #6) and those associated to shocks related to outflows and filament formation. Then we constrained the column densities and temperatures of the molecules detected towards the two cores.

Results. While core #3 appears to contain a hot core with a temperature of about 190 K, core #6 seems to have a lower temperature in the range from 20 to 90 K from a rotational diagram analysis. We have considered different source sizes for core #6 and the comparison of the abundances of the detected molecules towards the core with various interstellar sources shows that it is compatible with a core of size 1000 au with $T = 20\text{--}90$ K or a core of size 500 au with $T \sim 80$ K.

Conclusions. Core #6 of W43-MM1 remains one of the best high-mass prestellar core candidates even if we cannot exclude that it is at the very beginning of the protostellar phase of high-mass star formation.

Key words. stars: formation – stars: massive – ISM: abundances – ISM: molecules – radio lines: ISM

1. Introduction

Understanding high-mass stars ($M > 8 M_{\odot}$) is crucial in modern astrophysics since their energy budget towards the interstellar medium is the most important contribution coming from stars. They form in massive dense cores of $\sim 100 M_{\odot}$ within ~ 0.1 pc (Motte et al. 2007; Bontemps et al. 2010), by processes far less understood than for low-mass stars. Whereas low-mass stars have clear distinct phases of evolution from prestellar cores to young stars, we do not know if a prestellar core phase also exists for high-mass stars. While the UV radiation pressure problem (Wolfire & Cassinelli 1987) is mostly solved in most recent 3D modelling, two competitive models remain: the “core-fed” model (e.g. McKee & Tan 2003) and the “clump-fed” model (e.g. Bonnell & Bate 2006; Smith et al. 2009; Vázquez-Semadeni et al. 2017). The first model supposes the existence of starless massive dense cores, whereas, for the second one, low-mass prestellar cores can become high-mass protostars by collecting surrounding gas. The observation of a high-mass prestellar core is challenging due to the lower number of high-mass stars

compared to the number of low-mass stars (only $\sim 1\%$ of the Galactic stellar population) and the short duration of the hypothetical prestellar phase ($\sim 10^4\text{--}10^5$ yr; Tigé et al. 2017, and references therein). Motte et al. (2018a) and Louvet (2018) list the current high-mass prestellar core candidates: CygX-N53-MM2 (Duarte-Cabral et al. 2014), G11.92-0.61-MM2 (Cyganowski et al. 2014), G11.11-P6-SMA1 (Wang et al. 2014), G028CA9 (Kong et al. 2017), and W43-MM1#6 (Nony et al. 2018). No detailed study about their molecular content has been done so far. We investigate here the latter one, W43-MM1#6.

The W43-MM1 ridge is a massive molecular cloud of $2 \times 10^4 M_{\odot}$ contained in 6 pc^2 . It is the main submillimeter fragment of the W43 complex (Motte et al. 2003; Nguyen-Luong et al. 2013), located at the end of the Galactic bar at a distance of 5.5 kpc from the Sun (Nguyen Luong et al. 2011; Zhang et al. 2014). W43-MM1 is associated to OH, CH₃OH, and H₂O masers (respectively Braz & Epchtein 1983; Walsh et al. 1998; Valdetarro et al. 2001), which are high-mass stellar activity signposts (Motte et al. 2003). At 0.05 pc resolution, W43-MM1 appears as a mini-starburst cluster with a high star formation

rate of $6000 M_{\odot} \text{Myr}^{-1}$ and N1a as the most massive dense core (Louvet et al. 2014). Louvet et al. (2016) identified a large-scale shock (~ 5 pc) along the filament, consistent with numerical models of a collision of two giant molecular clouds (e.g. Wu et al. 2017), and intermediate-scale shocks (~ 0.2 pc) tracing protostellar outflows. The presence of small-scale shocks due to the collision of gas inflows on the cores has been suggested but not observed yet probably because of the limited sensitivity and/or angular resolution. More recently, Motte et al. (2018b) identified a large population of cores with ~ 2000 au typical sizes, and numerous high-mass cores. This suggests that W43-MM1 is one of the youngest and richest clusters of high-mass cores in the Milky Way. This sample is thus excellent to search for a high-mass prestellar core (Nony et al. 2018).

Two neighbouring cores with the same size and mass have been studied by Nony et al. (2018). The first core, identified as core #3, has clear outflows traced by SiO(5–4) and CO(2–1) transitions and a line forest seen over the continuum band, which qualifies it as a protostellar object. Core #6 in contrast does not show any outflow and just a few lines are seen in the continuum band; it is thus a good high-mass prestellar core candidate. During the evolution from the molecular cloud to the formation of the protostar, the composition of the gas evolves (e.g. Gerner et al. 2014). The formation and destruction of molecules depend on the density of the environment, temperature, time, and dynamics. A rise in temperature will allow molecules to desorb from the grain mantles to the gas phase and thus to be detectable by rotational spectroscopy. Complex organic molecules (COMs) have already been detected in both high-mass and low-mass star-forming regions. The typical radius of hot corinos, where the dust temperature is 100 K, is < 100 au, while it is a few thousands au for hot cores (e.g. Herbst & van Dishoeck 2009). We propose here to determine the nature of the W43-MM1 high-mass core #6, constraining the physical and chemical conditions of the core from the observed abundances and excitation temperatures of the detected molecules.

The article is organised as follows. We present the data and the method used to subtract the continuum in Sect. 2. In Sect. 3, we analyse the molecular content of cores #3 and #6. We study the distribution of the molecules to select those that are directly related to core #6 and we estimate their temperature and column densities. In Sect. 4 we compare our results with other star-forming regions and discuss the nature of cores #3 and #6.

2. Observations and data reduction

2.1. Data set

Observations were carried out in Cycle 2 (project #2013.1.01365.S) and Cycle 3 (#2015.1.01273.S), with the ALMA 12 m and ACA 7 m arrays. W43-MM1 was imaged in band 6 (between 216 and 234 GHz) with a $78'' \times 53''$ (2.1 pc \times 1.4 pc) mosaic composed of 33 fields with the 12 m array and 11 fields with ACA. The total bandwidth is 4.8 GHz made of two continuum bands and seven narrow bands centred on lines of interest, with a spectral resolution ranging from 122 to 976 kHz (0.17 to 1.26 km s $^{-1}$) and a spatial resolution of $\sim 0.44''$ (~ 2400 au) (see Table 1). The continuum band centred on 232.4 GHz is taken from Cycle 3 data and has a lower spatial resolution ($\sim 0.57''$ or ~ 3200 au). Data reduction was made with CASA 4.7.2. (McMullin et al. 2007). The cleaning was performed with a 0.5 Briggs robustness weighting, using the multiscale option and with a threshold of $\sim 1\sigma$ cropped on a

Table 1. Parameters of the ALMA spectral windows.

Spectral windows	ν_{obs} (GHz)	Bandwidth (MHz)	Resolution		rms (K)
			(" \times ")	(km s $^{-1}$)	
OC ³³ S	216.076	234	0.55×0.40	0.17	0.37
SiO	217.033	234	0.54×0.39	0.34	0.42
H ₂ CO	218.150	234	0.54×0.39	0.17	0.38
C ¹⁸ O	219.488	117	0.53×0.39	0.17	0.49
SO	219.877	117	0.54×0.39	0.33	0.44
CO	230.462	469	0.52×0.38	1.27	0.25
¹³ CS	231.144	469	0.52×0.37	0.32	0.28
Cont. 1 ^(a)	232.4	1875	0.66×0.50	1.26	0.12
Cont. 2	233.4	1875	0.51×0.36	1.26	0.22

Notes. ^(a)Spectral window observed in Cycle 3. The other windows were observed in Cycle 2.

region excluding the borders of the mosaic to avoid problems of divergence.

2.2. Continuum subtraction

Because of the sensitivity of the current instruments, it is now difficult to find channels with no emission line over all the map to subtract the continuum in a data cube. In W43-MM1, Motte et al. (2018b) identify 131 continuum cores with masses ranging from $\sim 1 M_{\odot}$ to $\sim 100 M_{\odot}$ and line contamination between 0% and 74%. The analysis of the four bright methyl formate (CH₃OCHO) lines detected in the 216 GHz band gives a velocity ranging from 94 to 102 km s $^{-1}$ for the 11 main continuum cores. Due to the numerous lines in the various cores and the different velocities of the cores, line emission is present in almost all channels. It is thus necessary to use a method of continuum subtraction that handles each pixel independently. We developed a method similar to the one presented in Jørgensen et al. (2016), using the density distribution of the channel intensities on each pixel. The profile of the distribution is composed of a Gaussian part due to the noise, and a tail towards high intensities associated with the molecular emission. The Gaussian noise distribution peaks on the true continuum value, but the peak of the observed distribution can be displaced due to the contribution of the tail. The best way to obtain a correct continuum value with the density profile method is discussed in Sanchez-Monge et al. (2017), and the corrected sigma-clipping method (cSCM) seems to be the most effective using their STATCONT algorithm. To properly treat the statistical behaviour of the tail, we use the exponentially modified Gaussian (EMG) function (Grushka 1972), which is the convolution between a Gaussian and an exponential decay,

$$f_{\text{EMG}}(x) = A\sigma\lambda\sqrt{\frac{\pi}{2}}\exp\left[\lambda\frac{2\mu + \lambda\sigma^2 - 2x}{2}\right]\text{erfc}\left(\frac{\mu + \lambda\sigma^2 - x}{\sqrt{2}\sigma}\right), \quad (1)$$

where A is the peak amplitude, σ the variance of the Gaussian, λ the relaxation rate of the exponential modifier, μ the centre of the Gaussian, and erfc the complementary error function.

We compared our EMG method with the cSCM from STATCONT, using synthetic spectra with parameters comparable to our data. Our method is about 20 times faster than STATCONT and we estimated a relative error on the continuum of $\pm 2\%$ with the EMG method fit versus $\pm 5\%$ for the cSCM. Figure 1

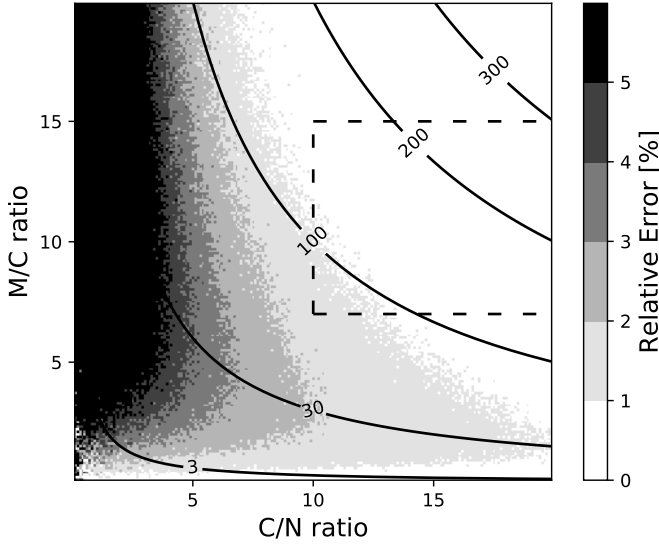


Fig. 1. Estimation of the relative error on the continuum level determination, depending on the molecular/continuum (M/C) ratio and continuum/noise (C/N) ratio. The black lines represent the M/N ratio. The typical ratios from the core #3 pixels are included in the dashed box. Each pixel is the average of the errors obtained from 20 synthetic spectra of 1000 channels with 100 random molecular Gaussian lines that follow a power law comparable to the observed data.

presents the estimation of the error depending on the following parameters: the continuum level, the maximum of the molecular emission and the noise level. We find that the EMG method is well adapted for this kind of molecular distribution. Part of the derived continuum map is presented in Fig. 2. Comparing with the line-contaminated continuum map of Motte et al. (2018b), derived from the integration of the full continuum band without getting rid of molecular lines, the positions of the cores are the same but the signal on their map is overestimated on average by $\sim 20\%$ on continuum cores and up to 60% for cores #1 and #4. As for the line-free continuum map of Motte et al. (2018b), it is consistent, within 10%, with the EMG continuum image but it is 1.2 times noisier.

3. Results and analysis

Out of the 13 high-mass cores with $M > 16 M_{\odot}$, identified at 1.3 mm by Motte et al. (2018b) in the W43-MM1 protocluster, we focus in this paper on the high-mass cores at the south-western tip of the main filament (see Fig. 1 of Nony et al. 2018) and we follow the same nomenclature. Table 2 lists the main characteristics of the four high-mass cores identified in the continuum map (lower right panel in Fig. 2). The sizes and shapes of the cores are the same as in Motte et al. (2018b) and Nony et al. (2018) and do not change in this frequency range. We are interested in particular in the comparison of cores #3 and #6, which are close (0.08 pc, 16 000 au), with a similar size of 1200 au and mass of $\sim 60 M_{\odot}$. We study here their spectra, averaged spatially over the size of the continuum cores.

3.1. Molecular content of cores #3 and #6

Whereas core #3 displays a forest of lines, much fewer lines are observed towards core #6 (see Figs. A.1 and A.2, respectively). We first studied the molecular content of core #3. The 25 molecules that we identified in this core, including isotopologues, are listed in Table 3, and the line parameters

of all detected transitions are given in Table A.1. Out of these molecules, 17 are identified in core #6. The line parameters of the 33 detected transitions towards core #6 are listed in Table A.2.

Complex molecules are clearly present in core #6 with the detection of methanol (CH_3OH) and its isotopologue ($^{13}\text{CH}_3\text{OH}$), acetaldehyde (CH_3CHO), dimethyl ether (CH_3OCH_3), and methyl formate (CH_3OCHO). There is no clear evidence of the presence of other COMs in core #6, except a tentative detection of the methanol isotopologue $\text{CH}_3^{18}\text{OH}$ and of formamide (NH_2CHO) that only appear when the corresponding lines are stacked. For $\text{CH}_3^{18}\text{OH}$, eight lines are considered as not contaminated by other species in core #3 and were selected for core #6. In the same way, five lines were selected for NH_2CHO . Some of the molecules detected towards core #6 seem to be directly associated with the continuum core, whereas the others do not peak at the centre of the core and are being interpreted as part of the large-scale features.

Molecules not directly associated to core #6. For seven of the species detected in core #6, the large-scale view shows that the distribution of these molecules is not only centred on the continuum cores (see Fig. 2). On small scales, those molecules clearly peak at the north of core #6 (e.g. SiO) or belong to the environment (see DCN map). On large scales, CO and SiO mainly trace the outflows from core #3 and #9, which have been already analysed by Nony et al. (2018). SO, H_2^{13}CO , and DCN follow the filament observed in continuum emission.

Molecules centred on core #6. The other ten identified species are clearly centred on the continuum core (see Fig. 3). This suggests that part of the emission of these molecules is not associated to the large-scale shocks expected in a cloud forming though collision or along protostellar outflows, but is directly linked to the presence of the core. The distribution of these molecules in the neighbouring core #3 is also centred on the continuum peak as shown in Fig. 4. We used a Gaussian fit to derive a deconvolved size of the molecular emission, which appears to be typically close to the size of the beam for all ten molecules observed in core #6. The results are comparable for the two cores (see Table 3), except for the C^{18}O emission, which is three times more extended than the continuum extension of core #3. We note a recurrent small offset ($< 0.2''$, i.e. less than half of the beam) of the molecular emission with respect to the continuum peak, towards the south for core #3 and towards the east for core #6 (see Fig. 5).

3.2. Critical density and opacity

The critical densities are estimated as $n_{\text{crit}} = A_{ij}/q_{ij}$ with A_{ij} the Einstein coefficient and q_{ij} the collision rate coefficient. The values of the critical densities for the individual transitions of the molecules, available in the Leiden Atomic and Molecular Database¹ (Schöier et al. 2005), are indicated in Tables A.1 and A.2. We find values between $\sim 10^4$ and 10^7 cm^{-3} for our lines, which are lower than the obtained n_{H_2} values of the cores ($\sim 10^9 \text{ cm}^{-3}$, see Table 2). In the following we will hence assume that local thermodynamical equilibrium (LTE) conditions are verified.

In general, isotopologues are less likely to be optically thick than their main isotopologue because of their lower abundances. Considering a distance of W43-MM1 from the Galactic centre of 4.5 kpc (Zhang et al. 2014), we take for the isotopic ratios:

¹ <https://home.strw.leidenuniv.nl/~moldata/>

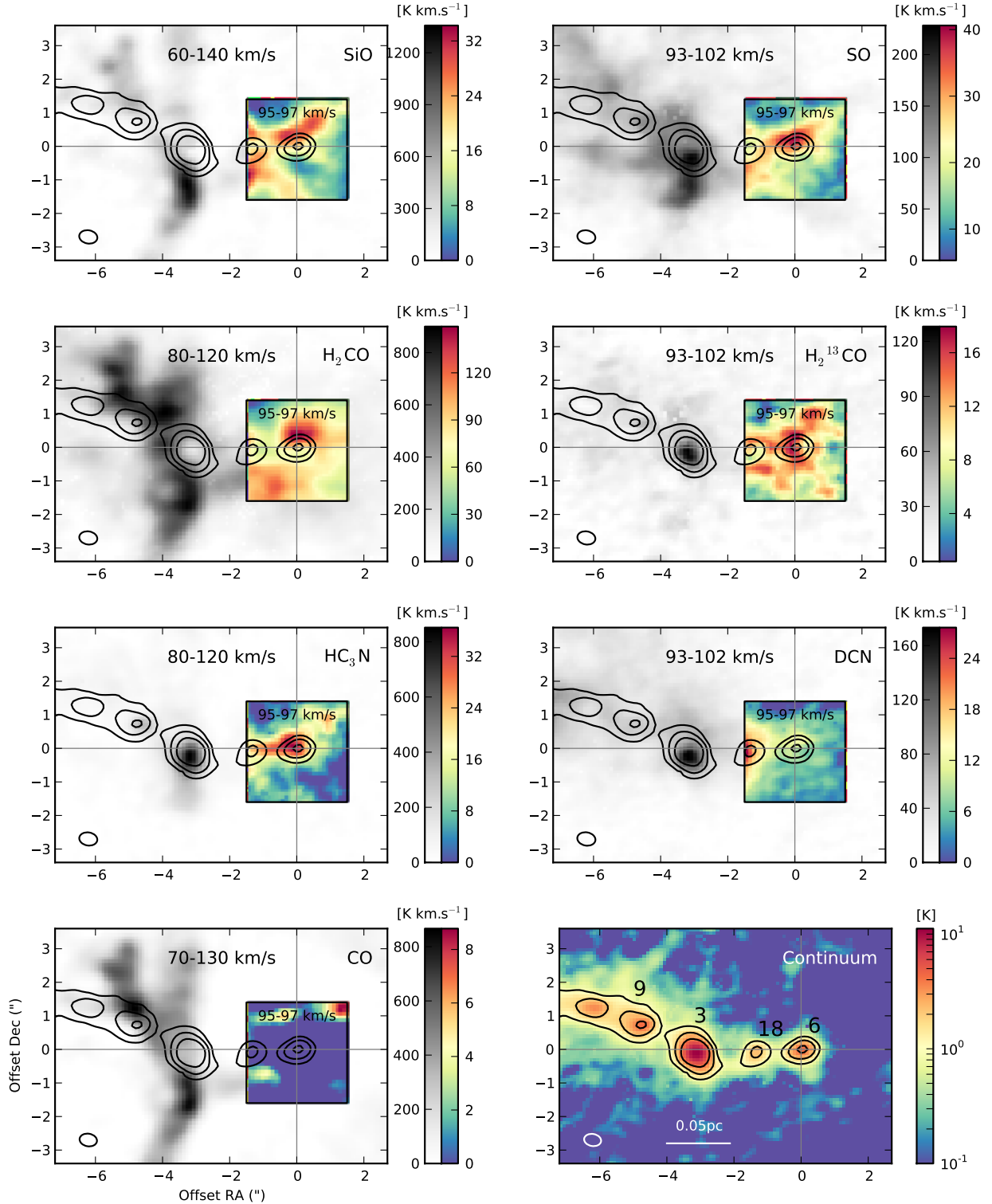


Fig. 2. Velocity integrated maps of the molecules that do not peak on core #6. The velocity range is indicated on the top of each box. For each molecule, grey scale images correspond to the large-scale map with large dynamics in intensity, while the colour maps focus on a narrower region around core #6 with smaller dynamics in intensity (as indicated by the two wedges on the right side of each panel). Temperature is the main beam brightness temperature T_{mb} . The continuum map obtained from the Cont. 2 spectral window data is plotted in the bottom right panel. The contours represent the 5–10–20 σ continuum emission, with $5\sigma \approx 9\text{mJy beam}^{-1}$. The position is relative to the centre of the continuum core #6. The beam is represented in the bottom left corner of each map. The CO emission is completely filtered in the 95–97 km s^{-1} velocity range around core #6 (see Fig. A.2), but its presence is confirmed by the C^{18}O emission.

$^{12}\text{C}/^{13}\text{C} = 45 \pm 13$ (Milam et al. 2005), $^{32}\text{S}/^{33}\text{S} = 90 \pm 30$ (Chin et al. 1996), and $^{18}\text{O}/^{16}\text{O} = 327 \pm 32$ (Wilson & Rood 1994). The detection of $^{13}\text{CH}_3\text{OH}$ in core #6 is important since the

methanol is optically thick. We also preferred to use the available isotopologues of CS and OCS to avoid some underestimations of abundances.

Table 2. Characteristics of the cores located at the tip of the main filament (from Motte et al. 2018b).

Core #	RA (J2000)	Dec (J2000)	Size ("×")	FWHM (au)	$M_{\text{core}} (M_{\odot})$	$n_{\text{H}_2} (\times 10^9 \text{cm}^{-3})$	$T_{\text{dust}} (\text{K})$
3	18 ^h 47 ^m 46 ^s .37	−1°54′33″.41	0.52 × 0.47	1200	59 ± 2	7.6 ± 0.3	45 ± 1
6	18 ^h 47 ^m 46 ^s .16	−1°54′33″.30	0.55 × 0.45	1300	56 ± 9	6.6 ± 0.1	23 ± 2
9	18 ^h 47 ^m 46 ^s .48	−1°54′32″.54	0.63 × 0.45	1600	17.8 ± 0.9	1.0 ± 0.1	50 ± 1
18	18 ^h 47 ^m 46 ^s .25	−1°54′33″.41	0.93 × 0.45	2600	28 ± 4	0.4 ± 0.1	23 ± 2

Table 3. Excitation temperatures and column densities of the detected molecules towards cores #3 and #6 derived for a core of the beam size.

Molecule	Core #3					Core #6				
	\bar{v} (km s ^{−1})	$\overline{\Delta v}$ (km s ^{−1})	N_{tot} (cm ^{−2})	T_{ex} (K)	Size (" × ")	\bar{v} (km s ^{−1})	$\overline{\Delta v}$ (km s ^{−1})	N_{tot} (cm ^{−2})	T_{ex} (K)	Size (" × ")
C ¹⁸ O	–	–	>1.8(17) ^(a)	190	2.36 × 1.17	–	–	–	–	0.53 × 0.18
CH ₃ OH	97.1 ± 0.1	5.9 ± 0.3	4.7 ± 0.4(17)	320 ± 80	0.55 × 0.35	95.8 ± 0.2	3.3 ± 0.4	4.2 ± 4.0(17)	55 ± 35	0.54 × 0.52
¹³ CH ₃ OH	97.0 ± 0.1	5.3 ± 0.3	9.8 ± 2.1(16)	210 ± 40	0.52 × 0.36	96.5 ± 0.2	5.2 ± 0.5	–	–	<0.55 × 0.45
CH ₃ CHO	96.6 ± 0.2	5.6 ± 0.7	5.7 ± 0.1(15)	150 ± 40	0.68 × 0.46	95.6 ± 0.1	2.6 ± 0.4	2.6 ± 1.9(15)	30 ± 15	0.71 × 0.54
¹³ CS	97.0 ± 0.1	5.0 ± 0.1	8.9(14)	190	0.94 × 0.86	95.4 ± 0.1	3.4 ± 0.3	–	–	0.73 × 0.48
CH ₃ OCH ₃	96.3 ± 0.1	6.7 ± 0.3	9.3 ± 1.4(16)	140 ± 25	0.61 × 0.53	95.9 ± 0.2	2.3 ± 0.7	–	–	–
CH ₃ OCHO	97.3 ± 0.3	4.7 ± 0.8	1.0 ± 0.3(17)	250 ± 50	0.51 × 0.28	95.7 ± 0.2	3.0 ± 0.3	7.0 ± 4.0(15)	50 ± 30	0.62 × 0.22
OCS	96.5 ± 0.1	5.7 ± 0.1	2.2(16)	190	0.70 × 0.55	95.7 ± 0.1	3.7 ± 0.2	–	–	0.78 × 0.56
O ¹³ CS	97.1 ± 0.1	4.0 ± 0.1	3.3(15)	190	0.43 × 0.34	95.1 ± 0.2	2.1 ± 0.4	–	–	<0.55 × 0.45
OC ³³ S	96.6 ± 0.1	3.7 ± 0.2	1.4(15)	190	0.49 × 0.24	95.4 ± 0.3	2.1 ± 0.6	–	–	<2.1 × 0.22
SiO $v=0$	–	–	>5.6(14) ^(a)	190	–	95.8 ± 0.3	5.1 ± 0.7	–	–	–
SO	97.0 ± 0.1	5.6 ± 0.2	4.1(15)	190	–	96.1 ± 0.1	3.2 ± 0.3	–	–	–
H ₂ CO	–	–	>1.0(16) ^(a)	190	–	–	–	–	–	–
H ₂ ¹³ CO	97.2 ± 0.1	4.6 ± 0.2	2.1(15)	190	–	96.0 ± 0.2	2.4 ± 0.6	–	–	Not centred
HC ₃ N	96.6 ± 0.1	5.3 ± 0.1	5.8(14)	190	–	96.3 ± 0.2	4.4 ± 0.5	–	–	–
DCN	96.8 ± 0.1	5.8 ± 0.3	3.6(14)	190	–	95.6 ± 0.1	1.7 ± 0.3	–	–	–
CO	–	–	>3.0(18) ^(a)	190	–	–	–	–	–	–
CH ₃ ¹⁸ OH	97.3 ± 0.7	4.8 ± 1.1	1.6 ± 0.8(16)	170 ± 60	–	–	–	–	–	–
¹³ CH ₃ CN	97.1 ± 0.3	5.1 ± 0.7	5.7 ± 1.3(14)	130 ± 60	–	–	–	–	–	–
HC(O)NH ₂	97.3 ± 0.4	6.2 ± 0.9	1.7 ± 0.7(15)	260 ± 120	–	–	–	–	–	–
C ₂ H ₅ OH	97.3 ± 0.4	5.0 ± 1.0	2.4 ± 0.5(16)	85 ± 20	–	–	–	–	–	–
H ₂ C ³⁴ S	96.8 ± 0.3	4.9 ± 0.6	1.4(15)	190	–	–	–	–	–	Not detected
CH ₃ COCH ₃	97.4 ± 0.5	4.7 ± 0.6	2.0(16)	190	–	–	–	–	–	–
C ₂ H ₃ CN	96.2 ± 0.3	7.2 ± 0.7	2.9(15)	190	–	–	–	–	–	–
C ₂ H ₅ CN	97.2 ± 0.1	4.9 ± 0.4	4.5 ± 1.5(15)	170 ± 70	–	–	–	–	–	–

Notes. $a(b) = a \times 10^b$. ^(a)Only a lower limit of the column density can be derived for the molecules where the emission is self-absorbed or filtered by the interferometer.

3.3. Temperatures and abundances

The total column density N_{tot} and the excitation temperature T_{ex} can be obtained in LTE and optically thin conditions using the relation

$$\ln \frac{N_{\text{u}}}{g_{\text{u}}} = \ln N_{\text{tot}} - \ln Q(T_{\text{ex}}) - \frac{E_{\text{u}}}{k_{\text{B}} T_{\text{ex}}}, \quad (2)$$

with N_{u} the upper level column density, g_{u} the degeneracy of the upper state, $Q(T_{\text{ex}})$ the partition function, and E_{u} the upper state energy. We assume here that the filling factor is equal to 1. In LTE conditions, the excitation temperature is identical to the kinetic temperature.

For core #3, we could derive the column density and the excitation temperature for ten molecules out of the 25 molecules

detected using rotational diagrams since we detected more than two transitions for these ten molecules. For core #6, it was only possible for methanol, acetaldehyde, and methyl formate, which have enough detected transitions to build a rotational diagram. The rotational diagrams were performed using the CASSIS² software (Vastel et al. 2015). The derived values are displayed in Table 3. Despite the significant uncertainties, the temperature seems to be lower for core #6 (15–90 K) than for core #3 (~190 K).

The local density is high enough to reach LTE conditions, so that we could use the equation (Tielens 2005)

$$N_{\text{tot}} = \frac{1.94 \times 10^3}{A_{\text{ij}}} v_{\text{ij}}^2 \int T_{\text{mb}} dv \frac{Q(T_{\text{ex}})}{g_{\text{u}} \exp(-E_{\text{u}}/k_{\text{B}} T_{\text{ex}})}, \quad (3)$$

² <http://cassis.irap.omp.eu>

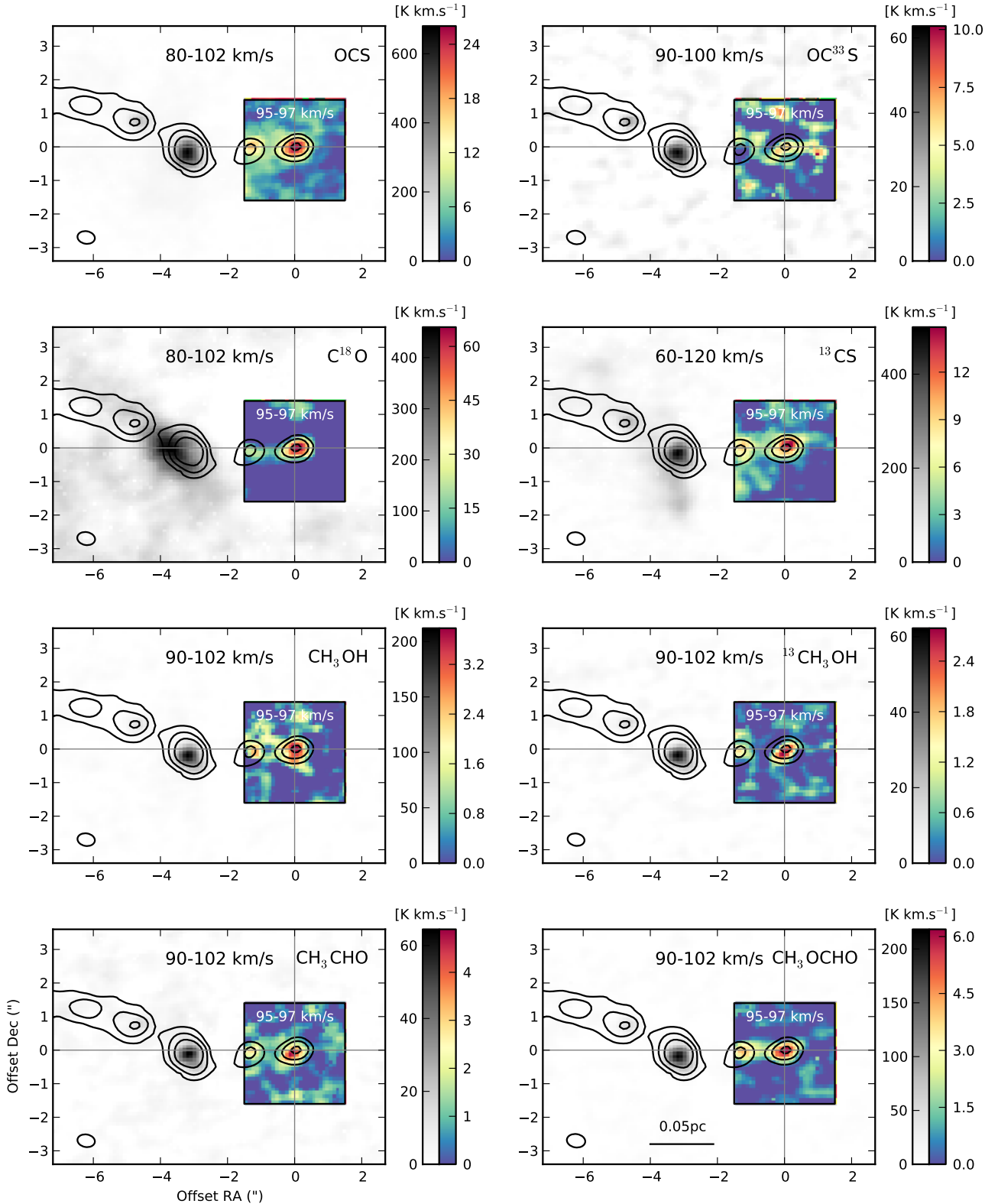


Fig. 3. Same as Fig. 2 but for molecules centred on core #6.

where N_{tot} is in cm^{-2} , ν_{ij} is the rest frequency in GHz, and the only parameter coming from the observations is the integrated intensity $\int T_{\text{mb}} dv$ in K km s^{-1} . The spectroscopic parameters come from the Cologne Database for Molecular Spectroscopy (CDMS³) and the Jet Propulsion Laboratory (JPL⁴) catalogue

³ <https://cdms.astro.uni-koeln.de>

⁴ <http://spec.jpl.nasa.gov/>

depending on the molecules (see Tables A.1 and A.2). When it was not possible to use a rotational diagram, we assumed an excitation temperature of 190K for core #3 to derive a column density with Eq. (3). These results are the inputs for the synthetic spectra in Figs. A.1 and A.2. Residuals show that only a few lines are unidentified towards core #3. Since H_2CO and C^{18}O are self-absorbed and SiO and CO are filtered, only lower limits can be obtained and no correct synthetic spectra can be

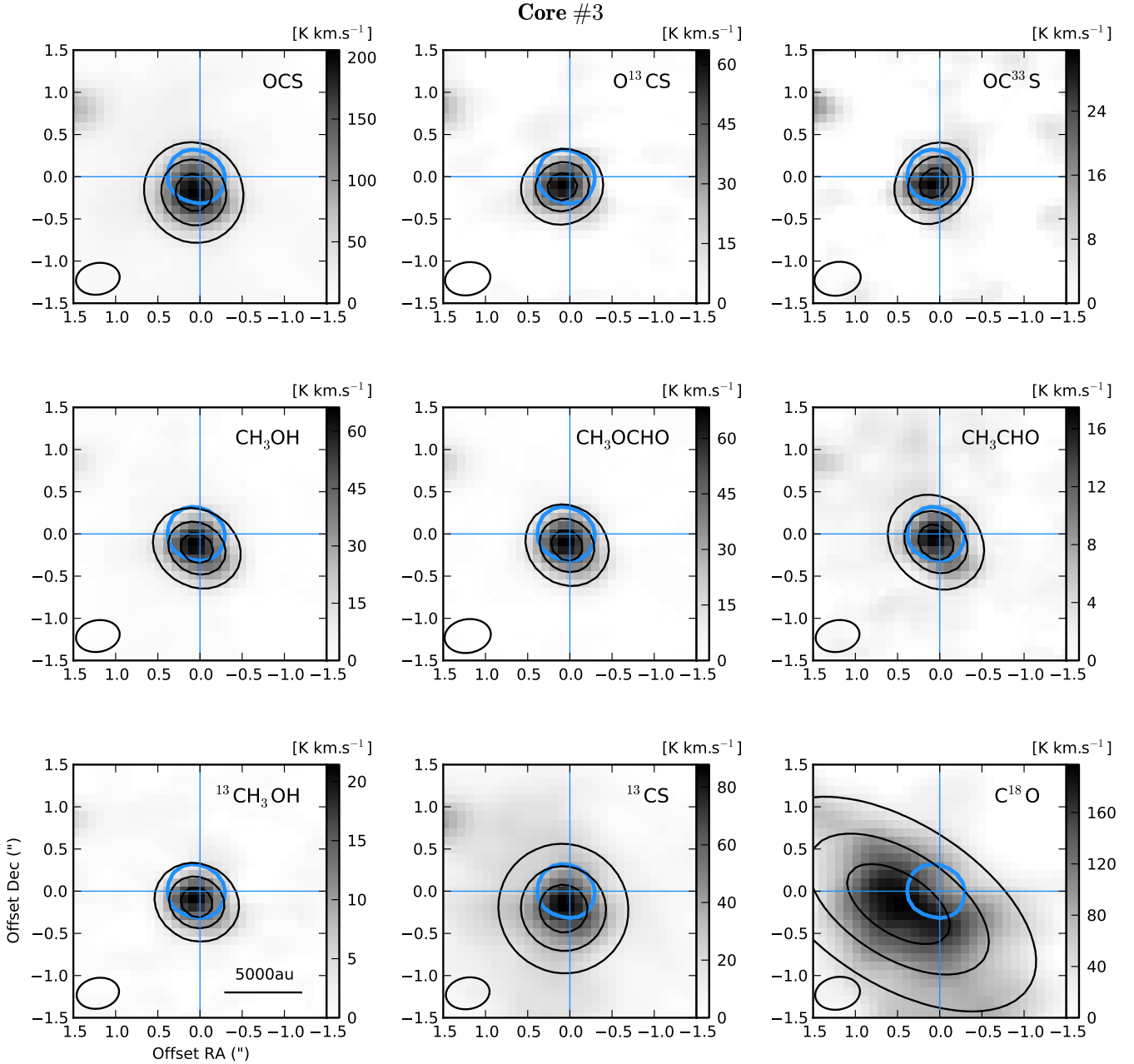


Fig. 4. Velocity integrated intensity map (grey scale) around core #3 for the molecules centred on the continuum core. The velocity range chosen for the integration is $95\text{--}97 km.s^{-1}$, which corresponds to the central emission peak. Temperature is the main beam brightness temperature T_{mb} . The black contours represent the result of a Gaussian fit to the emission; the levels are 20, 50, and 80% of the maximum. The maps are centred on the continuum core represented in blue contours (50% of the maximum). The beam is represented on the bottom left corner of each map.

performed for these molecules. For the optically thick molecules, a correction of the column density is made with their observed isotopologues; the corrected values are in Table 5 for core #3 and in Table 6 for core #6. The $O^{13}CS/OC^{33}S$ ratio for core #6 and the $O^{13}CS/OC^{33}S$ and $^{13}CH_3OH/CH_3^{18}OH$ ratios for core #3 are consistent with the elemental isotopic ratios mentioned in Sect. 3.2.

The obtained abundances relative to H_2 are displayed in Fig. 6. We consider that the depth of the molecular distribution along the line of sight is equal to the size of the continuum cores, hence we use column density values $N_{H_2} = (2.6 \pm 0.1) \times 10^{25} cm^{-2}$ and $N_{H_2} = (1.9 \pm 0.3) \times 10^{25} cm^{-2}$ (for core #3 and #6, respectively) from n_{H_2} densities in Table 2 for a source size equal to the size of the beam. Only the molecules centred on the cores are selected because they are more likely to be

directly associated to the core. We chose to take all the abundances derived at the mean temperature $T_{ex} = 190 K$ for core #3. To investigate the nature of core #6, we have derived the abundances in the typical range of temperature for star-forming regions ($T_{ex} = 10\text{--}200 K$). The values observed for various star-forming regions (see Table 4) are plotted for comparison and the nature of the cores are discussed in the next section.

4. Discussion

When considering the distribution of the molecules around core #6, the high density component observed at the north-east of core #6 may be associated to the heating of the outer envelope of the core by the interaction with a shock. Core #6 appears to be in a large-scale shock, traced by the SiO distribution in Fig. 2, and

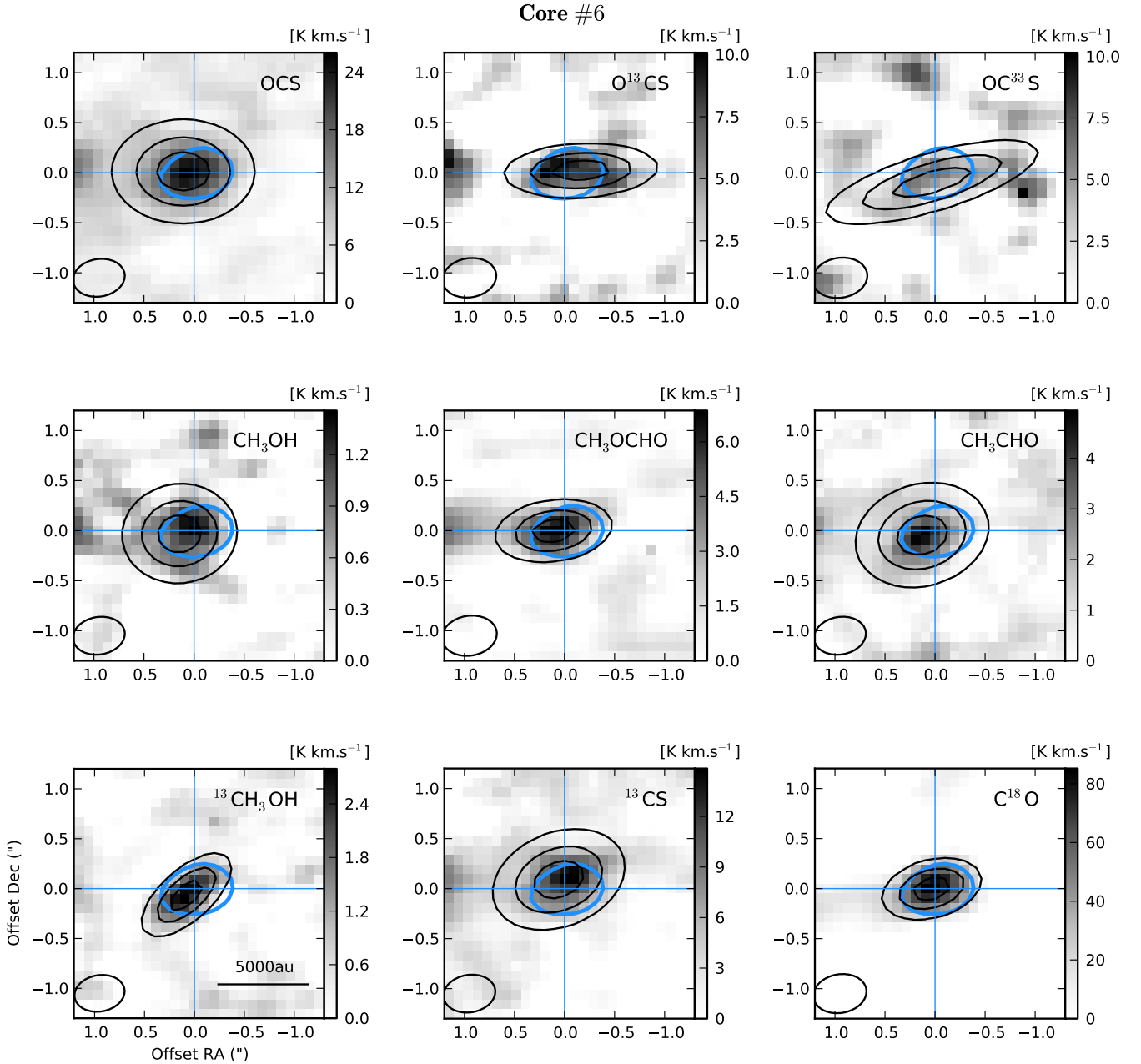


Fig. 5. Same as Fig. 4 but for core #6.

Louvet et al. (2016) showed that the narrow component of the SiO emission comes from the low-velocity shock spread along the length of the ridge. We note also that Nony et al. (2018) showed that an outflow seen in SiO and CO emission comes from core #18 in this direction.

The lines detected towards core #6 are narrower than towards core #3, with a mean line width of $3.2 \pm 0.1 \text{ km s}^{-1}$ against $5.2 \pm 0.2 \text{ km s}^{-1}$. Narrower lines for core #6 are a first clue to propose that it is less active and thus less evolved than its protostellar neighbour. The difference in state of evolution cannot be due to the W-R/OB stars association of W43, which is located $\sim 5 \text{ pc}$ away, as the cores are out of the ionisation front caused by their UV radiation (Motte et al. 2003; Nguyen-Luong et al. 2017). Furthermore the cores do not show any inner velocity gradient at the spatial and spectral resolutions of our observations.

The COMs detected in core #6 are usually detected in hot cores, where they are formed on grain mantles and then

desorbed during the warm-up phase. However, the detection of these molecules in low-mass prestellar cores (Bacmann et al. 2012; Cernicharo et al. 2012; Vastel et al. 2014) shows that their presence is not sufficient to determine the nature of the core. Also, lower abundances of COMs in this core with respect to core #3 is not a direct proof of a prestellar signature since other sources, like warm carbon chain chemistry sources, are poor in COMs (Sakai et al. 2008).

Hereafter we compare the abundances observed in core #3 and #6 to those in other sources considering two scenarios. In the first one, the size of the region emitting the detected molecules is taken as equal to the beam; in the second one, we consider that they are unresolved. The abundances taken in the literature for the other sources correspond to different source sizes and are not corrected by the filling factor or the H_2 column density. Nonetheless the trends remain the same: the molecules are more abundant in the high-mass hot cores than in hot corinos and even

Table 4. Sources used for comparison with cores #3 and #6.

Source	Name in Fig. 6	Nature of the core	Hot core/ corino	Distance (kpc)	Size (au)	Mass	L_{bol} (L_{\odot})	Reference
L134N	L134N	Prestellar	–	0.2	1500	LM	10^{-2}	Ohishi et al. (1992)
B1b-S	B1b-S	Young protostar	Hot corino	0.2	80	LM	10^{-1}	Marcelino et al. (2018)
B1b-N	B1b-N	FHSC candidate	–	0.2	500	LM	10^{-1}	Gerin et al. (2015)
L1544	L1544	Prestellar	–	0.1	>4000	LM	10^0	Vastel et al. (2014, 2018)
L1689B	L1689B	Prestellar	–	0.1	3500	LM	10^0	Bacmann et al. (2012)
NGC 1333 IRAS 4 A2	IRAS 4A2	Protostellar	Hot corino	0.2	250	LM	10^1	López-Sepulcre et al. (2017)
IRAS 16 293-2442	IRAS 16293	Protostellar	Hot corino	0.1	150	LM	10^1	Cazaux et al. (2003)
W43-MM1 #6	Core 6	Prestellar?	?	5.5	1300	HM	10^1	Nony et al. (2018)
CepE-A	CepE-A	Protostellar	Hot corino	0.7	510	IM	10^2	Ospina-Zamudio et al. (2018)
NGC 7129 FIRS2	FIRS2	Protostellar	Hot core	1.2	1900	IM	10^2	Fuente et al. (2014)
NGC 2264 CMM3A	CMM3A	Protostellar	Hot core	0.7	200	IM	10^2	Watanabe et al. (2017)
NGC 7538S MM3	MM3	Prestellar?	?		1100	IM		
MM2	MM2	Protostellar	Hot core	2.6	1100	IM	10^4 ^(a)	Feng et al. (2016)
MM1	MM1	Protostellar	Hot core		1100	HM		
CygX-N63 hot core lukewarm region	N63hc N63lw	Young protostar	Hot core	1.4	500 2100	HM HM	10^2 ^(a)	Fechtenbaum (2015)
W43-MM1 #3	Core 3	Protostellar	Hot core	5.5	1200	HM	10^3	Nony et al. (2018)
G35.20-0.74N A	G35.20	Protostellar	Hot core	2.2	1300	HM	10^4	Allen et al. (2017)
G35.03+0.35 A	G35.03	Protostellar	Hot core	2.3	1100	HM	10^4	Allen et al. (2017)
G34.26+015	G34.26	Protostellar	Hot core	3.7	3500	HM	10^4	Mookerjee et al. (2007)
Orion KL	KL	Protostellar	Hot core	0.4	4000	HM	10^5	Sutton et al. (1995)
Sgr B2(N2)	SgrB2	Protostellar	Hot core	8.3	12 000	HM	10^6	Crockett et al. (2014) Belloche et al. (2016)

Notes. The distance is from the Sun. LM, IM, and HM stand for low-mass ($M < 2 M_{\odot}$), intermediate-mass ($2 M_{\odot} < M < 8 M_{\odot}$), and high-mass ($M > 8 M_{\odot}$), respectively. The third column indicates if the protostellar cores harbour a hot core or a hot corino. ^(a)Total value from all the sources mentioned.

Table 5. Column densities in core #3 estimated from isotopologues.

Molecule	$N(\text{cm}^{-2})$
CH ₃ OH	$5.1 \pm 2.7(18)$
CS	$4.0 \pm 1.2(16)$
OCS	$1.4 \pm 0.5(17)$
H ₂ CO	$9.4 \pm 2.7(16)$
CO	$>5.3(19)$

Notes. $a(b) = a \times 10^b$. The methanol density is derived from the rotational diagrams of its isotopologues. For the other molecules, the densities are obtained using isotopologue column densities at 190 K. The source size is assumed to be equal to the beam.

more than in low-mass prestellar cores. Thus it does not impact the qualitative discussion that follows.

4.1. Cores sizes similar to the beam

In this case, we consider no beam dilution. The observed abundances towards core #3 are represented in Fig. 6 by red filled squares and those towards core #6 by blue solid lines. First of all, the observed abundances are globally lower than for the other sources. Indeed we find column densities of the same order as for other sources but the local densities ($\sim 7 \times 10^9 \text{cm}^{-3}$) are huge compared to the usual $n_{\text{H}_2} \sim 10^5 - 10^8 \text{cm}^{-3}$ observed in star-forming regions. Core #3 abundances are at least an order of magnitude below for OCS and CH₃OCHO compared to the other high-mass protostellar cores. However, for CH₃OH and

CH₃OCH₃, the core #3 results are more consistent with some hot cores (G35.20-0.74N A and G35.03+0.35 A). All abundances derived for core #6 are much lower than other sources at hot core and hot corino temperatures, except the CH₃OH value compatible with NGC 2264 CMM3A.

The only sources comparable are cold low-mass prestellar cores (L1544, L1689B) and the very young low-mass protostar B1b-N, suggesting a temperature of about 20 K. The envelope on a 2400 au scale would be at the same temperature as the dust, whose temperature is around 23 K. This means that there is no internal source of heating (in other terms a protostar), since such a source would unbalance the two temperatures. At this low temperature, bright emission of the $J = 3-2$ line of N₂D⁺ ($\nu = 231.32183 \text{GHz}$, $E_{\text{up}} = 22.2 \text{K}$) could be expected (Tobin et al. 2019) but it is not detected, suggesting that the core is hotter than estimated in this scenario.

4.2. Unresolved cores

We suppose now that the size of the molecular emission is smaller than the beam size. The molecular column densities are corrected by the filling factor assuming a r^{-2} density model for n_{H_2} . When considering core sizes smaller than 500 au, all lines become optically thick in our temperature range and their profiles no longer match with our observations. With a core size of 500 au, $n_{\text{H}_2} = 1.5 \times 10^{10} \text{cm}^{-3}$ ($N_{\text{H}_2} = 9.0 \times 10^{24} \text{cm}^{-2}$) and $n_{\text{H}_2} = 1.3 \times 10^{10} \text{cm}^{-3}$ ($N_{\text{H}_2} = 7.0 \times 10^{24} \text{cm}^{-2}$) for cores #3 and #6, respectively. The abundances are thus enhanced by a factor of 12 with a source size of 500 au compared to a source size of 2400 au. It is also a way to mimic results from a source with the size of

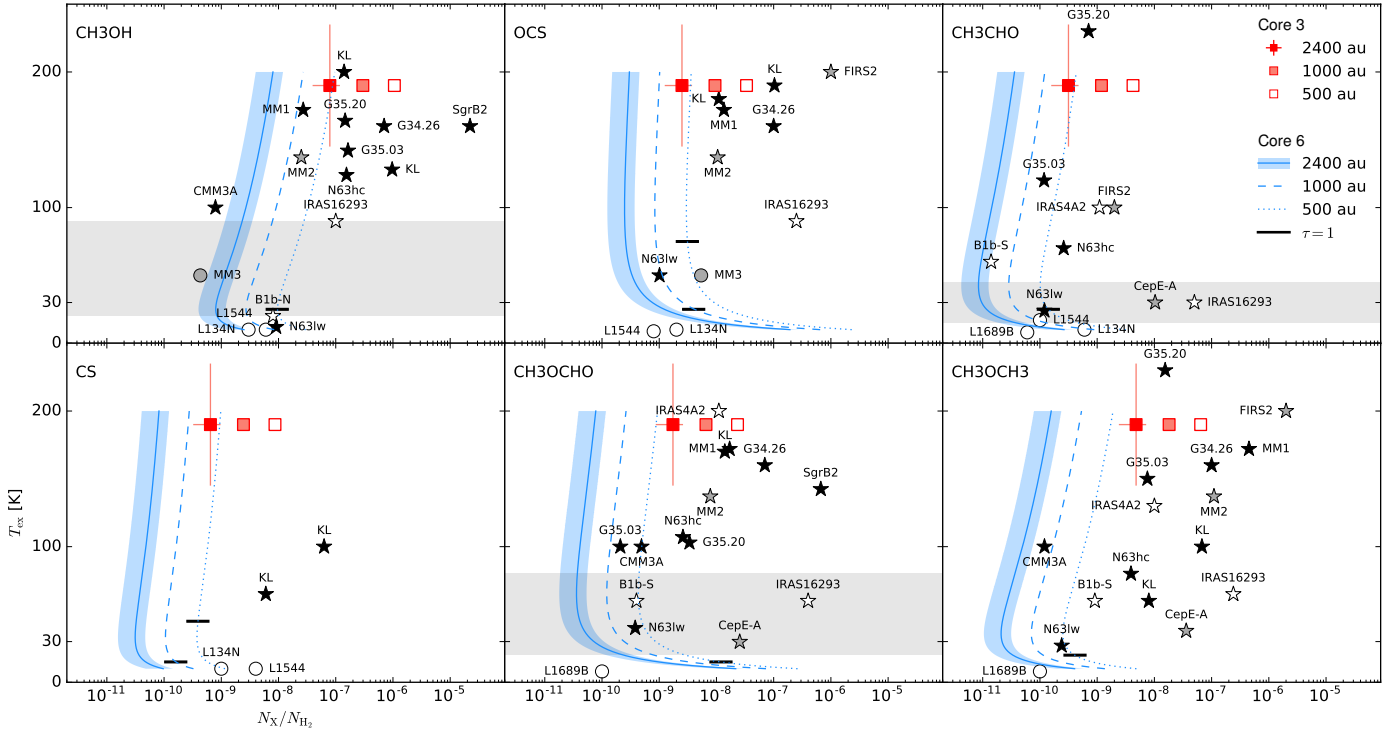


Fig. 6. Abundances with respect to H_2 for selected molecules. Results for core #3 (red squares) and core #6 (blue lines) considering different source sizes (see legend) are from LTE modelling. The temperature $T_{\text{ex}} = 190$ K is fixed for core #3, it varies from 10 to 200 K for core #6. The blue area represents an error of 50% on the estimation of the abundance, which includes the error on the line area and on the value of N_{H_2} . The grey area is the temperature range estimated for core #6 from the rotational diagrams. For a given size, a molecule becomes optically thick below the black line. The sources listed in Table 4 are represented by a dot for prestellar cores or a star for protostellar cores. The colour code is white for low-mass, grey for intermediate-mass, and black for high-mass cores. The names refer to Col. 2 of Table 4.

Table 6. Column densities in core #6 estimated for different scenarios.

Size	2400 au	1000 au	1000 au	500 au
T_{ex}	20 K	30 K	80 K	80 K
Molecule	N (cm^{-2})			
$C^{18}O$	1.3(16)	4.9(16)	9.4(16)	3.4(17)
CH_3OH	2.9(17)	1.4(17)	3.0(16)	1.1(17)
$^{13}CH_3OH$	1.4(15)	4.6(15)	1.1(16)	4.0(16)
CH_3CHO	9.4(14)	1.8(15)	2.1(15)	7.6(15)
^{13}CS	4.5(13)	1.3(14)	1.7(14)	6.2(14)
CH_3OCH_3	3.8(15)	8.3(15)	1.4(16)	5.0(16)
CH_3OCHO	1.3(16)	1.4(16)	7.0(15)	2.5(16)
OCS	2.9(16)	2.3(16)	6.1(15)	2.2(16)
$O^{13}CS$	3.2(15)	3.1(15)	1.0(15)	3.7(15)
$OC^{33}S$	1.8(15)	1.7(15)	5.9(14)	2.1(15)
Column densities estimated from the isotopologues				
CH_3OH	6.3(16)	2.1(17)	5.0(17)	1.8(18)
CS	1.9(15)	5.9(15)	7.7(15)	2.8(16)
OCS	1.5(17)	1.5(17)	4.9(16)	1.8(17)
CO	4.3(18)	1.6(19)	3.1(19)	1.1(20)

Notes. $a(b) = a \times 10^b$.

the beam but with a local density of $\sim 10^8 \text{cm}^{-3}$ compatible with young protostellar cores.

With a size of 500 au, results from core #3 are more consistent with high-mass protostellar cores for OCS and CH_3OCHO (see red empty squares on Fig. 6). However, the brightest lines

become optically thick. Considering a size of 1000 au for core #3 (pale red filled squares on Fig. 6) seems a better compromise to match with the observed line profiles and the other core abundances at the same time. The corresponding column densities are listed in Table A.3.

For core #6, with a size of 500 au (blue dotted lines on Fig. 6) the results are comparable to cores at various evolutionary stages between 20 and 90 K. However, some of the main lines are optically thick (e.g. ^{13}CS and OCS) for temperatures lower than 75 K excluding the scenario of a compact cold core. This leaves the possibility of a compact core at a high temperature of 80 K, included in the temperature range given by the rotational diagrams and consistent with sources like the hot corino B1b-S and the protostellar core NGC 2264 CMM3A. By adjusting the size of core #6 to 1000 au (blue dashed lines on Fig. 6), most of the lines become optically thin and low temperatures are possible. In particular, the CH_3OH and CH_3CHO abundances match with L134N values at 20 K with a comparable size. The observed abundances for core #6 with sizes 500–1000 au are also comparable to the lukewarm region of the young high-mass protostellar core CygX-N63 (2100 au, Fechtenbaum 2015), but still at least an order of magnitude below the 500 au N63 hot core values.

NGC 7538 S MM1 is a high-mass protostellar object, more evolved than the hot molecular core NGC 7538 S MM2 and NGC 7538 S MM3, which is comparable to prestellar objects because it only exhibits emission of lower excitation lines. While the core #3 results match with NGC 7538 S MM1, core #6 is more likely to be similar to NGC 7538 S MM3. Also, B1b-S displays a spectrum as rich in lines as core #3, and the B1b-N molecular emission shown in Marcelino et al. (2018) is as poor as core #6. However, the CH_3OH emission in B1b-N is associated to a

nascent outflow of size 1300 au (Gerin et al. 2015), unresolved at our beam size, but with abundances comparable to core #6.

5. Conclusion

The study of the molecular content of core #6 is challenging because of the few and weakly observed lines. We have identified 17 molecules in core #6 based on the analysis of its line-rich neighbour core #3. The distribution of these molecules reveals that ten are directly associated to core #6 and the others can be associated to the interaction between its envelope and the low-velocity shock of the ridge. The determination of the column densities and the temperatures from rotational diagrams was only possible for three molecules, methanol (CH₃OH), methyl formate (CH₃OCHO), and acetaldehyde (CH₃CHO). Because of the low signal-to-noise ratio (S/N) and the range of upper energy levels, there is a huge uncertainty on the temperature (15–90 K) obtained by this method. To better constrain the temperature and core nature, we have compared our observations to the abundances of different sources including prestellar cores, hot corinos, and hot cores. The conclusion about the nature of core #6 clearly depends on the estimated size of the core:

- at the size of the beam, 2400 au, the core is cold ($T_{\text{ex}} \approx T_{\text{dust}}$) and may be prestellar or in a transition phase to a protostellar core; however, the non detection of the N₂D⁺ emission suggests that the temperature is greater than 20 K.
- if the core size is 1000 au, it could be at the very beginning of the protostellar phase at 20–30 K or a young protostellar core at ~80 K not active enough to display large outflows;
- considering a size of 500 au, the core still cannot be comparable to hot cores but only to a hot corino with a temperature of ~80 K.
- the source size is not less than 500 au because the lines would be optically thick, which is not observed.

Core #6 is not as evolved as core #3, the absence of outflows in CO and SiO suggests that it does not contain a protostar. From the molecular study it appears as a good high-mass prestellar core candidate and deep dedicated line surveys with a higher spatial resolution are still necessary to investigate whether it harbours a hot corino, like those found towards low-mass class 0 protostars.

Acknowledgements. This paper makes use of the following ALMA data: ADS/JAO.ALMA#2013.1.01365.S, ADS/JAO.ALMA#2015.1.01273.S. ALMA is a partnership of ESO (representing its member states), NSF (USA), and NINS (Japan), together with NRC (Canada), MOST and ASIAA (Taiwan), and KASI (Republic of Korea), in cooperation with the Republic of Chile. The Joint ALMA Observatory is operated by ESO, au/NRAO, and NAOJ. This work was supported by the Programme National de Physique Stellaire and Physique et Chimie du Milieu Interstellaire (PNPS and PCMI) of CNRS/INSU (with INC/INP/IN2P3).

References

Allen, V., van der Tak, F. F. S., Sánchez-Monge, Á., Cesaroni, R., & Beltrán, M. T. 2017, *A&A*, **603**, A133
 Bacmann, A., Taquet, V., Faure, A., Kahane, C., & Ceccarelli, C. 2012, *A&A*, **541**, L12
 Belloche, A., Müller, H. S. P., Garrod, R. T., & Menten, K. M. 2016, *A&A*, **587**, A91
 Bonnell, I. A., & Bate, M. R. 2006, *MNRAS*, **370**, 488

Bontemps, S., Motte, F., Csengeri, T., & Schneider, N. 2010, *A&A*, **524**, A18
 Braz, M. A., & Epchtein, N. 1983, *A&AS*, **54**, 167
 Cazaux, S., Tielens, A. G. G. M., Ceccarelli, C., et al. 2003, *ApJ*, **593**, L51
 Cernicharo, J., Marcelino, N., Roueff, E., et al. 2012, *ApJ*, **759**, L43
 Chin, Y.-N., Henkel, C., Whiteoak, J. B., Langer, N., & Churchwell, E. B. 1996, *A&A*, **305**, 960
 Crockett, N. R., Bergin, E. A., Neill, J. L., et al. 2014, *ApJ*, **787**, 112
 Cyganowski, C. J., Brogan, C. L., Hunter, T. R., et al. 2014, *ApJ*, **796**, L2
 Duarte-Cabral, A., Bontemps, S., Motte, F., et al. 2014, *A&A*, **570**, A1
 Fechtenbaum, S. 2015, Ph.D. Thesis, University of Bordeaux, France
 Feng, S., Beuther, H., Semenov, D., et al. 2016, *A&A*, **593**, A46
 Fuente, A., Cernicharo, J., Caselli, P., et al. 2014, *A&A*, **568**, A65
 Gerin, M., Pety, J., Fuente, A., et al. 2015, *A&A*, **577**, L2
 Gerner, T., Beuther, H., Semenov, D., et al. 2014, *A&A*, **563**, A97
 Grushka, E. 1972, *Anal. Chem.*, **44**, 1733
 Herbst, E., & van Dishoeck, E. F. 2009, *ARA&A*, **47**, 427
 Jørgensen, J. K., van der Wiel, M. H. D., Coutens, A., et al. 2016, *A&A*, **595**, A117
 Kong, S., Tan, J. C., Caselli, P., et al. 2017, *ApJ*, **834**, 193
 López-Sepulcre, A., Sakai, N., Neri, R., et al. 2017, *A&A*, **606**, A121
 Louvet, F. 2018, in *SF2A-2018: Proceedings of the Annual meeting of the French Society of Astronomy and Astrophysics*, 311
 Louvet, F., Motte, F., Hennebelle, P., et al. 2014, *A&A*, **570**, A15
 Louvet, F., Motte, F., Gusdorf, A., et al. 2016, *A&A*, **595**, A122
 Marcelino, N., Gerin, M., Cernicharo, J., et al. 2018, *A&A*, **620**, A80
 McKee, C. F., & Tan, J. C. 2003, *ApJ*, **585**, 850
 McMullin, J. P., Waters, B., Schiebel, D., Young, W., & Golap, K. 2007, in *Astronomical Data Analysis Software and Systems XVI*, eds. R. A. Shaw, F. Hill, & D. J. Bell, *ASP Conf. Ser.*, **376**, 127
 Milam, S. N., Savage, C., Brewster, M. A., Ziurys, L. M., & Wyckoff, S. 2005, *ApJ*, **634**, 1126
 Mookerjee, B., Casper, E., Mundy, L. G., & Looney, L. W. 2007, *ApJ*, **659**, 447
 Motte, F., Schilke, P., & Lis, D. C. 2003, *ApJ*, **582**, 277
 Motte, F., Bontemps, S., Schilke, P., et al. 2007, *A&A*, **476**, 1243
 Motte, F., Bontemps, S., & Louvet, F. 2018a, *ARA&A*, **56**, 41
 Motte, F., Nony, T., Louvet, F., et al. 2018b, *Nat. Astron.*, **2**, 478
 Nguyen Luong, Q., Motte, F., Hennemann, M., et al. 2011, *A&A*, **535**, A76
 Nguyen-Luong, Q., Motte, F., Carlhoff, P., et al. 2013, *ApJ*, **775**, 88
 Nguyen-Luong, Q., Anderson, L. D., Motte, F., et al. 2017, *ApJ*, **844**, L25
 Nony, T., Louvet, F., Motte, F., et al. 2018, *A&A*, **618**, L5
 Ohishi, M., Irvine, W. M., & Kaifu, N. 1992, in *Astrochemistry of Cosmic Phenomena*, ed. P. D. Singh, *IAU Symp.*, **150**, 171
 Ospina-Zamudio, J., Lefloch, B., Ceccarelli, C., et al. 2018, *A&A*, **618**, A145
 Sakai, N., Sakai, T., Hirota, T., & Yamamoto, S. 2008, *ApJ*, **672**, 371
 Sanchez-Monge, A., Schilke, P., Ginsburg, A., Cesaroni, R., & Schmiedecke, A. 2017, *Astrophysics Source Code Library* [record ascl:1704.004]
 Schöier, F. L., van der Tak, F. F. S., van Dishoeck, E. F., & Black, J. H. 2005, *A&A*, **432**, 369
 Smith, R. J., Longmore, S., & Bonnell, I. 2009, *MNRAS*, **400**, 1775
 Sutton, E. C., Peng, R., Danchi, W. C., et al. 1995, *ApJS*, **97**, 455
 Tielens, A. G. G. M. 2005, *The Physics and Chemistry of the Interstellar Medium* (Cambridge: Cambridge University Press.)
 Tigé, J., Motte, F., Russeil, D., et al. 2017, *A&A*, **602**, A77
 Tobin, J. J., Bourke, T. L., Mader, S., et al. 2019, *ApJ*, **870**, 81
 Valdettaro, R., Palla, F., Brand, J., et al. 2001, *A&A*, **368**, 845
 Vastel, C., Ceccarelli, C., Lefloch, B., & Bachiller, R. 2014, *ApJ*, **795**, L2
 Vastel, C., Bottinelli, S., Caux, E., Glorian, J.-M., & Boiziot, M. 2015, in *SF2A-2015: Proceedings of the Annual meeting of the French Society of Astronomy and Astrophysics*, eds. F. Martins, S. Boissier, V. Buat, L. Cambrésy, & P. Petit, 313
 Vastel, C., Quénard, D., Le Gal, R., et al. 2018, *MNRAS*, **478**, 5514
 Vázquez-Semadeni, E., González-Samaniego, A., & Colín, P. 2017, *MNRAS*, **467**, 1313
 Walsh, A. J., Burton, M. G., Hyland, A. R., & Robinson, G. 1998, *MNRAS*, **301**, 640
 Wang, K., Zhang, Q., Testi, L., et al. 2014, *MNRAS*, **439**, 3275
 Watanabe, Y., Sakai, N., López-Sepulcre, A., et al. 2017, *ApJ*, **847**, 108
 Wilson, T. L., & Rood, R. 1994, *ARA&A*, **32**, 191
 Wolfire, M. G., & Cassinelli, J. P. 1987, *ApJ*, **319**, 850
 Wu, B., Tan, J. C., Christie, D., et al. 2017, *ApJ*, **841**, 88
 Zhang, B., Moscadelli, L., Sato, M., et al. 2014, *ApJ*, **781**, 89

Appendix A: Additional material

Table A.1. Spectroscopic parameters of the transitions detected towards core #3 and observed line parameters.

Frequency (MHz)	Molecule	Transition $J=\nu$	E_{up} (K)	$S\mu^2$ (D ²)	$\log(A_{ij})$ (s ⁻¹)	n_{crit} (cm ⁻³)	Database	Line width (km s ⁻¹)	Velocity (km s ⁻¹)	$\int T_{\text{mb}} dv$ (K km s ⁻¹)
216 109.78	CH ₃ OCHO	19 _{2,18} – 18 _{2,17} E	109.3	49.4	-3.83	–	JPL	3.9 ± 0.1	97.2 ± 0.1	33.6 ± 1.2
216 115.57	CH ₃ OCHO	19 _{2,18} – 18 _{2,17} A	109.3	49.4	-3.83	–	JPL	4.9 ± 0.1	97.3 ± 0.1	41.3 ± 1.4
216 147.36	OC ³³ S	18 – 17	98.6	9.2	-4.04	1.3(6) ^(a)	CDMS	3.7 ± 0.2	96.6 ± 0.1	8.0 ± 0.8
216 210.91	CH ₃ OCHO	19 _{1,18} – 18 _{1,17} E	109.3	49.4	-3.83	–	JPL	4.4 ± 0.1	97.2 ± 0.1	37.4 ± 1.4
216 216.54	CH ₃ OCHO	19 _{1,18} – 18 _{1,17} A	109.3	49.4	-3.83	–	JPL	5.1 ± 0.2	97.4 ± 0.1	40.4 ± 2.8
217 044.62	¹³ CH ₃ OH	14 _{1,13} – 13 _{2,12} –	254.3	5.8	-4.62	1.2(7) ^(a)	CDMS	3.1 ± 0.2	97.6 ± 0.1	15.8 ± 2.1
217 104.98	SiO $\nu=0$	5–4	31.3	48.0	-3.28	4.8(6)	CDMS	65 ^(b)	91.3 ^(b)	>86 ^(b)
217 191.40	CH ₃ OCH ₃	22 _{4,19} – 22 _{3,20}	253.4	327.7	-4.27	–	CDMS	6.5 ± 0.2	96.9 ± 0.1	42.9 ± 2.0
217 238.54	DCN	3–2	20.9	80.5	-3.34	–	CDMS	5.8 ± 0.3	96.8 ± 0.1	51.4 ± 4.5
218 127.21	CH ₃ COCH ₃	20 _{2,18} – 19 _{3,17} EE	119.1	1200.4	-3.66	–	JPL	5.6 ± 0.2	97.0 ± 0.1	16.1 ± 1.2
218 199.00	O ¹³ CS	18 – 17	99.5	9.2	-4.52	4.1(5) ^(a)	CDMS	4.0 ± 0.1	97.1 ± 0.1	19.1 ± 0.9
218 222.19	H ₂ CO	3 _{0,3} – 2 _{0,2}	21.0	16.3	-3.55	2.6(6)	CDMS	17 ^(b)	98.0 ^(b)	>52 ^(b)
218 280.90	CH ₃ OCHO	17 _{3,14} – 16 _{3,13} E	99.7	43.6	-3.82	–	JPL	4.2 ± 0.1	97.2 ± 0.1	34.5 ± 1.1
218 297.89	CH ₃ OCHO	17 _{3,14} – 16 _{3,13} A	99.7	43.6	-3.82	–	JPL	4.2 ± 0.1	97.1 ± 0.1	32.9 ± 1.3
218 324.72	HC ₃ N	24 – 23	131.0	334.2	-3.08	1.7(7)	CDMS	5.3 ± 0.1	96.6 ± 0.1	73.0 ± 2.0
219 505.59	C ₂ H ₅ CN	24 _{2,22} – 23 _{2,21}	135.6	353.2	-3.05	–	JPL	4.7 ± 0.1	96.9 ± 0.1	36.0 ± 1.3
219 560.35	C ¹⁸ O	2 – 1	15.8	0.02	-6.22	9.9(3) ^(a)	CDMS	4 ^(b)	96.0 ^(b)	>37 ^(b)
219 908.53	H ₂ ¹³ CO	3 _{1,2} – 2 _{1,1}	32.9	43.5	-3.59	2.3(6) ^(a)	CDMS	4.6 ± 0.2	97.2 ± 0.1	35.7 ± 2.5
219 949.44	SO	6 ₅ – 5 ₄	35.0	14.0	-3.87	2.3(6)	CDMS	5.6 ± 0.2	97.0 ± 0.1	56.0 ± 2.2
219 983.68	CH ₃ OH	25 ₃ – 24 ₄ E1	802.2	8.4	-4.70	–	JPL	4.4 ± 0.2	97.3 ± 0.1	18.4 ± 1.5
219 993.66	CH ₃ OH	23 ₅ – 22 ₆ E1	775.9	6.6	-4.76	–	JPL	4.2 ± 0.3	97.6 ± 0.1	16.9 ± 1.8
230 315.79	CH ₃ CHO	12 _{2,11} – 11 _{2,10} E	81.1	147.4	-3.38	–	JPL	5.8 ± 0.3	95.6 ± 0.1	36.5 ± 2.6
230 368.76	CH ₃ OH	22 ₄ – 21 ₅ E1	682.8	6.6	-4.68	–	JPL	5.0 ± 0.2	97.6 ± 0.1	30.2 ± 2.2
230 487.94	C ₂ H ₃ CN	24 ₁ – 23 ₁	141.2	1045.0	-2.50	–	CDMS	8.0 ± 0.6	96.2 ± 0.2	20.4 ± 2.4
230 538.00	CO	2–1	16.6	0.02	-6.16	1.1(4)	CDMS	85 ^(b)	89.5 ^(b)	>550 ^(b)
230 672.55	C ₂ H ₅ OH	13 _{2,11} – 12 _{2,10}	138.6	20.3	-3.97	–	JPL	4.5 ± 0.3	97.1 ± 0.1	12.4 ± 1.8
230 738.56	C ₂ H ₃ CN	25 ₀ – 24 ₀	145.5	1089.8	-2.53	–	CDMS	4.9 ± 0.4	96.2 ± 0.3	16.9 ± 4.3
231 060.99	OCS	19 – 18	110.9	9.7	-4.45	4.9(5)	CDMS	5.7 ± 0.1	96.5 ± 0.1	129.2 ± 3.5
231 220.68	¹³ CS	5 – 4	33.3	38.3	-3.60	4.3(6) ^(a)	JPL	5.0 ± 0.1	97.0 ± 0.1	78.9 ± 2.8
231 269.90	CH ₃ CHO	12 _{6,7} – 11 _{6,6} E	153.4	113.9	-3.48	–	JPL	5.0 ± 0.2	97.3 ± 0.1	15.4 ± 1.1
231 281.11	CH ₃ OH	10 ₂ – 9 ₃ –	165.3	2.68	-4.73	2.5(7)	JPL	5.4 ± 0.1	97.2 ± 0.1	74.5 ± 2.1
231 310.42	C ₂ H ₅ CN	26 _{1,25} – 25 _{1,24}	153.4	383.1	-2.98	–	JPL	4.9 ± 0.1	96.7 ± 0.1	48.0 ± 1.5
231 467.50	CH ₃ CHO	12 _{4,8} – 11 _{4,7} E	108.4	135.0	-3.41	–	JPL	5.3 ± 0.3	96.2 ± 0.1	11.6 ± 1.0
231 506.29	CH ₃ CHO	12 _{4,9} – 11 _{4,8} E	108.2	135.0	-3.41	–	JPL	6.0 ± 0.6	97.3 ± 0.2	17.2 ± 2.7
231 595.27	CH ₃ CHO	12 _{3,10} – 11 _{3,9} E	92.6	142.3	-3.39	–	JPL	7.0 ± 1.0	95.7 ± 0.3	9.8 ± 2.3
231 686.68	CH ₃ ¹⁸ OH	5 _{-0,5} – 4 _{-0,4} E	46.2	16.2	-4.27	4.5(5) ^(a)	CDMS	4.6 ± 0.4	97.4 ± 0.1	7.8 ± 1.2
231 724.16	CH ₃ OCHO	18 _{4,14} – 17 _{4,13} E	300.8	45.8	-3.75	–	JPL	4.0 ± 0.3	97.3 ± 0.1	7.6 ± 1.0
231 735.83	CH ₃ ¹⁸ OH	5 _{-1,5} – 4 _{-1,4} E	39.0	15.6	-4.29	5.8(5) ^(a)	CDMS	5.2 ± 0.3	96.5 ± 0.1	11.6 ± 1.2
231 748.72	CH ₃ CHO	12 _{3,10} – 11 _{3,9} E	92.5	141.1	-3.39	–	JPL	5.7 ± 0.2	96.5 ± 0.1	12.3 ± 0.9
231 758.45	CH ₃ ¹⁸ OH	5 _{0,5} – 4 _{0,4} A	33.4	16.2	-4.27	4.5(5) ^(a)	CDMS	4.7 ± 0.3	97.1 ± 0.1	9.0 ± 1.1
231 796.52	CH ₃ ¹⁸ OH	5 _{3,2} – 4 _{3,1} A	83.5	10.3	-4.47	4.2(5) ^(a)	CDMS	5.4 ± 1.4	97.8 ± 0.4	8.6 ± 3.4
231 801.47	CH ₃ ¹⁸ OH	5 _{2,4} – 4 _{2,3} A	70.8	13.8	-4.34	5.4(5) ^(a)	CDMS	4.2 ± 0.5	96.8 ± 0.1	8.0 ± 1.4
231 826.74	CH ₃ ¹⁸ OH	5 _{1,4} – 4 _{1,3} E	54.1	16.2	-4.27	5.6(5) ^(a)	CDMS	4.5 ± 0.5	97.1 ± 0.2	6.7 ± 1.2
231 840.93	CH ₃ ¹⁸ OH	5 _{2,3} – 4 _{2,2} A	70.9	13.8	-4.34	5.4(5) ^(a)	CDMS	4.2 ± 0.7	97.4 ± 0.2	6.3 ± 1.5
231 847.58	CH ₃ CHO	12 _{3,9} – 11 _{3,8} E	92.6	141.2	-3.39	–	JPL	6.2 ± 0.8	97.1 ± 0.2	13.3 ± 2.7
231 864.50	CH ₃ ¹⁸ OH	5 _{2,3} – 4 _{2,2} E	55.8	13.4	-4.36	5.2(5) ^(a)	CDMS	4.0 ± 0.2	97.3 ± 0.1	6.0 ± 0.7
231 896.06	CH ₃ OCHO	19 _{4,16} – 18 _{4,15} E	309.7	48.14	-3.75	–	JPL	4.5 ± 0.2	97.2 ± 0.1	8.5 ± 0.7
231 903.90	CH ₃ OCHO	19 _{12,7} – 18 _{12,6} A	395.1	30.46	-3.95	–	JPL	6.4 ± 0.5	97.5 ± 0.2	8.2 ± 1.1
231 968.39	CH ₃ CHO	12 _{3,9} – 11 _{3,8} A	92.6	142.3	-3.38	–	JPL	4.8 ± 0.3	96.9 ± 0.1	12.1 ± 1.3
231 987.93	CH ₃ OCH ₃	13 _{0,13} – 12 _{1,12}	80.9	271.8	-4.04	–	CDMS	6.8 ± 0.3	96.2 ± 0.1	57.1 ± 4.7
232 034.63	C ₂ H ₅ OH	18 _{5,14} – 18 _{4,15}	175.3	18.6	-4.13	–	JPL	5.4 ± 0.5	96.8 ± 0.2	6.3 ± 1.2
232 160.19	CH ₃ OCHO	19 _{9,10} – 18 _{9,9} E	353.3	39.3	-3.83	–	JPL	4.7 ± 0.9	97.2 ± 0.2	9.6 ± 2.8
232 164.44	CH ₃ OCHO	19 _{10,10} – 18 _{10,9} A	365.7	36.6	-3.86	–	JPL	4.6 ± 0.7	97.5 ± 0.3	12.7 ± 3.0
232 194.91	¹³ CH ₃ CN	13 ₃ – 12 ₃	142.4	757.2	-2.99	5.2(6) ^(a)	JPL	5.1 ± 0.3	97.1 ± 0.1	17.4 ± 2.1

Notes. All observational values are integrated over the continuum core. ^(a)Collision rate value from the main isotopologue. ^(b)The line is self-absorbed or filtered. The values correspond to the zero-base line width, the velocity of the line maximum, and the integration of the positive T_{mb} values.

Table A.1. continued.

Frequency (MHz)	Molecule	Transition $J=$	E_{up} (K)	$S\mu^2$ (D ²)	$\log(A_{ij})$ (s ⁻¹)	n_{crit} (cm ⁻³)	Database	Line width (km s ⁻¹)	Velocity (km s ⁻¹)	$\int T_{\text{mb}} dv$ (K km s ⁻¹)
232 216.73	¹³ CH ₃ CN	13 ₂ – 12 ₂	106.7	390.4	-2.98	5.2(6) ^(a)	JPL	4.9 ± 0.3	97.2 ± 0.2	14.6 ± 1.9
232 229.82	¹³ CH ₃ CN	13 ₁ – 12 ₁	85.2	397.6	-2.97	5.2(6) ^(a)	JPL	4.2 ± 0.5	97.2 ± 0.2	13.9 ± 2.5
232 234.19	¹³ CH ₃ CN	13 ₀ – 12 ₀	78.0	399.9	-2.97	5.2(6) ^(a)	JPL	5.2 ± 0.5	97.1 ± 0.2	17.1 ± 2.8
232 273.65	HC(O)NH ₂	11 _{2,10} – 10 _{2,9}	78.9	139.0	-3.05	–	CDMS	7.3 ± 0.2	97.5 ± 0.1	13.2 ± 1.1
232 404.81	C ₂ H ₅ OH	17 _{5,13} – 17 _{4,14}	160.1	17.5	-4.14	–	JPL	4.5 ± 0.5	97.0 ± 0.2	6.7 ± 1.2
232 418.52	CH ₃ OH	10 ₂ +9 ₃ +	165.4	2.68	-4.73	2.2(7)	JPL	5.4 ± 0.4	97.1 ± 0.1	38.8 ± 3.5
232 683.93	CH ₃ OCHO	19 _{10,10} –18 _{10,9} E	365.5	36.7	-3.86	–	JPL	4.2 ± 0.3	97.6 ± 0.1	7.8 ± 1.1
232 738.62	CH ₃ OCHO	19 _{8,11} – 18 _{8,10} E	342.0	41.6	-3.80	–	JPL	4.5 ± 0.2	97.2 ± 0.1	11.0 ± 0.8
232 754.71	H ₂ C ³⁴ S	7 _{1,7} – 6 _{1,6}	57.9	55.9	-3.74	2.0(6) ^(a)	CDMS	4.9 ± 0.6	96.8 ± 0.3	12.0 ± 2.0
232 783.45	CH ₃ OH	18 ₃ + -17 ₄ +	446.54	5.46	-4.66	–	JPL	4.9 ± 0.2	97.1 ± 0.1	50.4 ± 3.3
232 790.02	C ₂ H ₅ CN	26 _{3,24} – 25 _{3,25}	161.0	380.0	-2.98	–	JPL	5.6 ± 0.4	97.0 ± 0.1	46.5 ± 5.1
232 836.17	CH ₃ OCHO	19 _{8,12} – 18 _{8,11} A	341.8	41.6	-3.81	–	JPL	3.5 ± 0.2	97.0 ± 0.1	8.5 ± 0.7
232 839.68	CH ₃ OCHO	19 _{8,11} – 18 _{8,10} A	341.8	41.6	-3.80	–	JPL	4.2 ± 0.7	97.5 ± 0.3	9.5 ± 2.2
232 865.05	CH ₃ COCH ₃	17 _{8,10} – 16 _{7,9} EE	114.8	1121.9	-3.53	–	JPL	4.7 ± 0.6	97.4 ± 0.5	5.0 ± 1.1
232 945.80	CH ₃ OH	10 ₋₃ – 11 ₋₂ E2	190.4	3.0	-4.67	1.6(7)	JPL	5.8 ± 0.3	97.0 ± 0.1	78.7 ± 6.3
232 962.32	C ₂ H ₅ CN	26 ₁₀ – 25 ₁₀	261.6	328.4	-3.04	–	JPL	5.4 ± 0.3	97.3 ± 0.1	37.3 ± 3.2
232 967.57	C ₂ H ₅ CN	26 ₉ – 25 ₉	240.9	339.2	-3.03	–	JPL	6.2 ± 0.8	97.0 ± 0.3	44.2 ± 8.3
232 975.51	C ₂ H ₅ CN	26 ₁₁ – 25 ₁₁	285.2	316.4	-3.06	–	JPL	5.3 ± 0.1	96.8 ± 0.1	34.4 ± 1.2
232 998.74	C ₂ H ₅ CN	26 ₈ – 25 ₈	222.0	348.9	-3.01	–	JPL	4.6 ± 0.5	97.3 ± 0.2	36.7 ± 5.9
233 002.70	C ₂ H ₅ CN	26 ₁₂ –25 ₁₂	310.7	303.3	-3.07	–	JPL	5.0 ± 0.3	97.3 ± 0.1	30.3 ± 2.4
233 041.09	C ₂ H ₅ CN	26 ₁₃ – 25 ₁₃	338.3	289.1	-3.09	–	JPL	5.1 ± 0.3	97.3 ± 0.1	22.8 ± 2.4
233 069.37	C ₂ H ₅ CN	26 ₇ – 25 ₇	205.4	357.5	-3.00	–	JPL	5.0 ± 0.2	96.9 ± 0.1	42.6 ± 3.3
233 088.86	C ₂ H ₅ CN	26 ₁₄ –25 ₁₄	368.2	273.6	-3.12	–	JPL	5.8 ± 0.2	97.0 ± 0.1	21.0 ± 1.3
233 193.36	CH ₃ OCH ₃	22 _{2,21} – 22 _{1,22}	232.9	135.6	-4.56	–	CDMS	4.6 ± 0.6	96.8 ± 0.2	17.1 ± 3.7
233 226.79	CH ₃ OCHO	19 _{4,16} – 18 _{4,15} A	123.2	48.0	-3.74	–	JPL	4.9 ± 0.4	97.3 ± 0.2	41.1 ± 5.7
233 246.79	CH ₃ OCHO	19 _{16,3} – 18 _{16,2} A	281.8	14.8	-4.25	–	JPL	4.6 ± 0.4	96.5 ± 0.2	11.0 ± 1.6
233 268.59	CH ₃ OCHO	19 _{16,4} – 18 _{16,3} E	281.8	14.8	-4.25	–	JPL	5.5 ± 0.3	97.2 ± 0.1	11.4 ± 1.1
233 277.94	C ₂ H ₅ CN	26 ₁₇ – 25 ₁₇	470.6	220.7	-3.21	–	JPL	4.5 ± 0.6	97.3 ± 0.2	7.7 ± 2.0
233 310.12	CH ₃ OCHO	19 _{15,5} – 18 _{15,4} A	261.3	19.1	-4.14	–	JPL	5.0 ± 0.1	97.4 ± 0.1	20.1 ± 0.6
233 315.78	CH ₃ OCHO	19 _{15,4} – 18 _{15,3} E	261.3	19.1	-4.14	–	JPL	5.8 ± 0.6	97.0 ± 0.2	13.2 ± 2.1
233 331.21	CH ₃ OCHO	19 _{15,5} – 18 _{15,4} E	261.3	19.1	-4.14	–	JPL	4.6 ± 0.7	97.0 ± 0.3	10.1 ± 2.6
233 394.66	CH ₃ OCHO	19 _{14,6} – 18 _{14,5} A	242.1	23.2	-4.06	–	JPL	6.0 ± 0.3	98.5 ± 0.1	34.9 ± 3.1
233 414.43	CH ₃ OCHO	19 _{14,6} – 18 _{14,5} E	242.1	23.2	-4.06	–	JPL	5.2 ± 0.4	97.1 ± 0.1	15.7 ± 1.9
233 443.10	C ₂ H ₅ CN	26 _{5,22} – 25 _{5,21}	178.8	371.1	-2.98	–	JPL	5.7 ± 0.4	97.3 ± 0.1	42.4 ± 4.8
233 498.30	C ₂ H ₅ CN	26 _{5,21} – 25 _{5,20}	178.9	371.1	-2.98	–	JPL	5.2 ± 0.2	97.2 ± 0.1	41.5 ± 2.7
233 553.24	CH ₃ OCHO	19 _{7,12} – 18 _{7,11} A	332.0	43.7	-3.78	–	JPL	5.8 ± 0.4	97.1 ± 0.1	20.1 ± 2.2
233 571.02	C ₂ H ₅ OH	13 _{5,8} – 13 _{4,9}	107.9	12.8	-4.15	–	JPL	5.2 ± 0.5	97.5 ± 0.2	15.5 ± 2.6
233 632.27	CH ₃ OCH ₃	25 _{5,20} – 25 _{4,21}	331.9	402.9	-4.13	–	CDMS	5.5 ± 0.2	97.3 ± 0.1	35.1 ± 1.9
233 649.88	CH ₃ OCHO	19 _{12,7} – 18 _{12,6} E	207.6	30.5	-3.94	–	JPL	4.0 ± 0.1	97.2 ± 0.1	19.6 ± 0.7
233 655.34	CH ₃ OCHO	19 _{12,7} – 18 _{12,6} A	207.6	30.5	-3.94	–	JPL	6.6 ± 0.8	97.8 ± 0.4	64.6 ± 11.3
233 670.98	CH ₃ OCHO	19 _{12,8} – 18 _{12,7} E	207.6	30.5	-3.94	–	JPL	4.6 ± 0.3	97.1 ± 0.1	19.5 ± 2.2
233 727.94	CH ¹⁸ OH	5 _{1,4} – 4 _{1,3} A	48.0	15.6	-4.28	5.5(5) ^(a)	CDMS	4.5 ± 0.4	97.3 ± 0.2	14.8 ± 2.3
233 734.72	HC(O)NH ₂	11 _{4,8} – 10 _{4,7}	114.9	124.8	-3.03	–	CDMS	6.8 ± 0.3	96.6 ± 0.1	17.4 ± 1.5
233 745.61	HC(O)NH ₂	11 _{4,7} – 10 _{4,6}	114.9	124.8	-3.03	–	CDMS	5.3 ± 0.4	97.5 ± 0.1	13.5 ± 1.6
233 753.96	CH ₃ OCHO	18 _{4,14} – 17 _{4,13} E	114.4	45.8	-3.74	–	JPL	5.4 ± 0.3	97.3 ± 0.1	45.4 ± 4.2
233 777.52	CH ₃ OCHO	18 _{4,14} – 17 _{4,13} A	114.4	45.8	-3.74	–	JPL	4.2 ± 0.2	97.1 ± 0.1	35.3 ± 3.0
233 795.67	CH ₃ OH	18 ₃ – -17 ₄ –	446.59	5.5	-4.66	–	JPL	5.0 ± 0.3	96.9 ± 0.1	49.2 ± 5.9
233 845.23	CH ₃ OCHO	19 _{11,8} – 18 _{11,7} E	192.4	33.7	-3.89	–	JPL	5.4 ± 0.2	97.3 ± 0.1	26.4 ± 1.6
233 854.29	CH ₃ OCHO	19 _{11,9} – 18 _{11,8} A	192.4	33.7	-3.89	–	JPL	4.2 ± 0.2	97.1 ± 0.1	28.6 ± 2.7
233 867.19	CH ₃ OCHO	19 _{11,9} – 18 _{11,8} E	192.4	33.7	-3.89	–	JPL	4.3 ± 0.4	96.9 ± 0.2	20.6 ± 3.3
233 896.58	HC(O)NH ₂	11 _{3,9} – 10 _{3,8}	94.1	133.1	-3.03	–	CDMS	6.2 ± 0.5	97.3 ± 0.2	19.8 ± 2.9
233 916.95	CH ₃ OH	13 ₃ – 14 ₄ –	868.5	2.5	-5.26	–	JPL	4.9 ± 0.4	97.1 ± 0.2	13.3 ± 2.0
233 951.12	C ₂ H ₅ OH	13 _{5,9} – 13 _{4,10}	107.9	12.8	-4.15	–	JPL	5.2 ± 0.3	97.2 ± 0.1	18.3 ± 1.6
234 011.58	¹³ CH ₃ OH	5 _{1,5} – 4 _{1,4} ++	48.3	3.9	-4.28	1.1(7) ^(a)	CDMS	4.7 ± 0.2	96.9 ± 0.1	35.3 ± 2.3
234 112.33	CH ₃ OCHO	19 _{10,9} – 18 _{10,8} E	178.5	36.6	-3.85	–	JPL	5.0 ± 0.2	97.4 ± 0.1	28.2 ± 2.2
234 124.88	CH ₃ OCHO	19 _{10,9} – 18 _{10,8} A	178.5	36.6	-3.85	–	JPL	4.7 ± 0.3	96.9 ± 0.1	35.5 ± 4.3
234 134.60	CH ₃ OCHO	19 _{10,10} – 18 _{10,9} E	178.5	36.6	-3.85	–	JPL	4.8 ± 0.3	97.4 ± 0.1	27.6 ± 2.7
234 255.16	C ₂ H ₅ OH	12 _{5,8} – 12 _{4,9}	96.9	11.6	-4.16	–	JPL	4.6 ± 0.4	97.1 ± 0.2	12.2 ± 2.0
234 315.50	HC(O)NH ₂	11 _{3,8} – 10 _{3,7}	94.1	133.1	-3.03	–	CDMS	6.3 ± 0.4	96.8 ± 0.2	17.4 ± 2.4
234 336.11	CH ₃ OCHO	19 _{6,14} – 18 _{6,13} A	323.5	45.5	-3.76	–	JPL	4.6 ± 0.4	97.2 ± 0.2	14.5 ± 2.2
234 381.27	CH ₃ OCHO	19 _{5,15} – 18 _{5,14} A	316.4	46.9	-3.74	–	JPL	4.4 ± 0.2	97.0 ± 0.1	16.9 ± 1.7
234 406.45	C ₂ H ₅ OH	11 _{5,6} – 11 _{4,7}	86.8	10.4	-4.17	–	JPL	4.4 ± 0.1	97.2 ± 0.1	11.2 ± 0.7
234 423.96	C ₂ H ₅ CN	26 _{4,22} – 25 _{4,21}	169.1	376.3	-2.98	–	JPL	5.3 ± 0.1	97.2 ± 0.1	42.9 ± 1.4

Table A.2. Same as Table A.1 but towards core #6.

Frequency (MHz)	Molecule	Transition $J=$	E_{up} (K)	$S\mu^2$ (D ²)	$\log(A_{ij})$ (s ⁻¹)	n_{crit} (cm ⁻³)	Database	Line width (km s ⁻¹)	Velocity (km s ⁻¹)	$\int T_{\text{mb}} dv$ (K km s ⁻¹)
216 109.78	CH ₃ OCHO	19 _{2,18} – 18 _{2,17} E	109.3	49.4	-3.83	–	JPL	3.2 ± 0.9	95.5 ± 0.4	2.1 ± 0.5
216 115.57	CH ₃ OCHO	19 _{2,18} – 18 _{2,17} A	109.3	49.4	-3.83	–	JPL	3.8 ± 1.5	95.9 ± 0.4	2.8 ± 0.8
216 147.36	OC ³³ S	18 – 17	98.6	9.2	-4.04	1.3(6) ^(a)	CDMS	2.1 ± 0.6	95.4 ± 0.3	1.1 ± 0.3
216 210.91	CH ₃ OCHO	19 _{1,18} – 18 _{1,17} E	109.3	49.4	-3.83	–	JPL	1.8 ± 0.4	95.1 ± 0.2	1.8 ± 0.4
216 216.54	CH ₃ OCHO	19 _{1,18} – 18 _{1,17} A	109.3	49.4	-3.83	–	JPL	2.4 ± 0.9	95.9 ± 0.4	1.6 ± 0.5
217 104.98	SiO v=0	5 – 4	31.3	48.0	-3.28	4.8(6)	CDMS	5.1 ± 0.7	95.8 ± 0.3	20.0 ± 0.6
217 238.54	DCN	3 – 2	20.9	80.5	-3.34	–	CDMS	1.7 ± 0.3	95.6 ± 0.1	3.6 ± 0.4
218 199.00	O ¹³ CS	18 – 17	99.5	9.2	-4.52	4.1(5) ^(a)	CDMS	2.1 ± 0.4	95.1 ± 0.2	2.0 ± 0.3
218 222.19	H ₂ CO	3 _{0,3} – 2 _{0,2}	21.0	16.3	-3.55	2.6(6)	CDMS	22 ^(b)	94.8 ^(b)	>45 ^(b)
218 280.90	CH ₃ OCHO	17 _{3,14} – 16 _{3,13} E	99.7	43.6	-3.82	–	JPL	2.8 ± 0.5	96.1 ± 0.2	2.0 ± 0.4
218 297.89	CH ₃ OCHO	17 _{3,14} – 16 _{3,13} A	99.7	43.6	-3.82	–	JPL	4.0 ± 0.6	95.2 ± 0.4	2.4 ± 0.4
218 324.72	HC ₃ N	24 – 23	131.0	334.2	-3.08	1.7(7)	CDMS	4.4 ± 0.5	96.3 ± 0.2	10.7 ± 0.9
219 560.35	C ¹⁸ O	2 – 1	15.8	0.02	-6.22	9.9(3) ^(a)	CDMS	10.5 ^(b)	95.5 ^(b)	>14 ^(b)
219 908.53	H ₂ ¹³ CO	3 _{1,2} – 2 _{1,1}	32.9	43.5	-3.59	2.3(6) ^(a)	CDMS	2.4 ± 0.6	96.0 ± 0.2	6.3 ± 1.2
219 949.44	SO	6 ₅ – 5 ₄	35.0	14.0	-3.87	2.3(6)	CDMS	3.5 ± 0.3	96.1 ± 0.1	18.3 ± 1.0
230 315.79	CH ₃ CHO	12 _{2,11} – 11 _{2,10} E	81.1	147.4	-3.38	–	JPL	2.9 ± 1.1	95.3 ± 0.2	3.5 ± 1.3
230 538.00	CO	2 – 1	16.6	0.02	-6.16	1.1(4)	CDMS	–	–	>25 ^(b)
231 060.99	OCS	19 – 18	110.9	9.7	-4.45	4.9(5)	CDMS	3.7 ± 0.2	95.7 ± 0.1	11.6 ± 0.4
231 220.68	¹³ CS	5 – 4	33.3	38.3	-3.60	4.3(6) ^(a)	JPL	3.4 ± 0.3	95.4 ± 0.1	6.6 ± 0.5
231 269.90	CH ₃ CHO	12 _{6,7} – 11 _{6,6} E	153.4	113.9	-3.48	–	JPL	3.3 ± 1.0	96.4 ± 0.3	2.7 ± 0.6
231 281.11	CH ₃ OH	10 ₂ – 9 ₃ –	165.3	2.68	-4.73	2.5(7)	JPL	3.3 ± 0.6	95.9 ± 0.3	3.2 ± 0.5
231 467.50	CH ₃ CHO	12 _{4,8} – 11 _{4,7} E	108.4	135.0	-3.41	–	JPL	1.5 ± 0.3	95.1 ± 0.1	1.4 ± 0.2
231 506.29	CH ₃ CHO	12 _{4,9} – 11 _{4,8} E	108.2	135.0	-3.41	–	JPL	1.4 ± 0.5	95.9 ± 0.2	1.1 ± 0.3
231 595.27	CH ₃ CHO	12 _{3,10} – 11 _{3,9} E	92.6	142.3	-3.39	–	JPL	3.7 ± 0.9	95.3 ± 0.5	1.4 ± 0.4
231 748.72	CH ₃ CHO	12 _{3,10} – 11 _{3,9} E	92.5	141.1	-3.39	–	JPL	2.9 ± 1.1	95.6 ± 0.5	1.4 ± 0.4
231 987.93	CH ₃ OCH ₃	13 _{0,13} – 12 _{1,12} AE	80.9	101.9	-4.04	–	CDMS	2.3 ± 0.7	95.9 ± 0.2	1.5 ± 0.4
232 418.52	CH ₃ OH	10 ₂₊ – 9 ₃₊	165.4	2.68	-4.73	2.2(7)	JPL	2.8 ± 0.6	96.2 ± 0.3	1.3 ± 0.3
232 945.80	CH ₃ OH	10 ₋₃ – 11 ₋₂ E2	190.4	3.0	-4.67	1.6(7)	JPL	3.7 ± 0.8	95.6 ± 0.5	1.9 ± 0.4
233 226.79	CH ₃ OCHO	19 _{4,16} – 18 _{4,15} A	123.2	48.0	-3.74	–	JPL	2.9 ± 1.0	95.4 ± 0.6	1.8 ± 0.6
233 753.96	CH ₃ OCHO	18 _{4,14} – 17 _{4,13} E	114.4	45.8	-3.74	–	JPL	2.9 ± 1.2	96.2 ± 0.6	1.7 ± 0.7
233 777.52	CH ₃ OCHO	18 _{4,14} – 17 _{4,13} A	114.4	45.8	-3.74	–	JPL	2.9 ± 0.8	96.1 ± 0.4	2.3 ± 0.6
234 011.58	¹³ CH ₃ OH	5 _{1,5} – 4 _{1,4} ++	48.3	3.9	-4.28	1.1(7) ^(a)	CDMS	5.2 ± 0.5	96.5 ± 0.2	5.2 ± 1.8

Notes. All observational values are integrated over the continuum core. ^(a)Collision rate value from the main isotopologue. ^(b)The line is self-absorbed or filtered. The values correspond to the zero-base line width, the velocity of the line maximum, and the integration of the positive T_{mb} values.

Table A.3. Column densities in core #3 estimated for a source size of 1000 au and a temperature of 190 K.

Molecule	N (cm ⁻²)
C ¹⁸ O	>8.4(17)
CH ₃ OH	1.4(18)
¹³ CH ₃ OH	2.8(17)
CH ₃ CHO	3.8(16)
¹³ CS	3.2(15)
CH ₃ OCH ₃	4.7(17)
CH ₃ OCHO	3.8(17)
OCS	1.0(17)
O ¹³ CS	1.2(16)
OC ³³ S	5.5(15)
SiO v=0	>1.9(15)
SO	1.5(16)
H ₂ CO	>2.0(16)
H ₂ ¹³ CO	7.8(15)
HC ₃ N	2.4(15)
DCN	1.5(15)
CO	>2.1(19)
CH ₃ ¹⁸ OH	8.2(16)
¹³ CH ₃ CN	1.9(15)
HC(O)NH ₂	3.9(15)
C ₂ H ₅ OH	7.2(16)
H ₂ C ³⁴ S	4.0(15)
CH ₃ COCH ₃	9.0(16)
C ₂ H ₃ CN	8.3(15)
C ₂ H ₅ CN	1.7(16)
Column densities estimated from the isotopologues	
CH ₃ OH	2.0(19)
CS	1.4(17)
OCS	5.2(17)
H ₂ CO	3.5(17)
CO	>3.8(19)

Notes. $a(b) = a \times 10^b$.

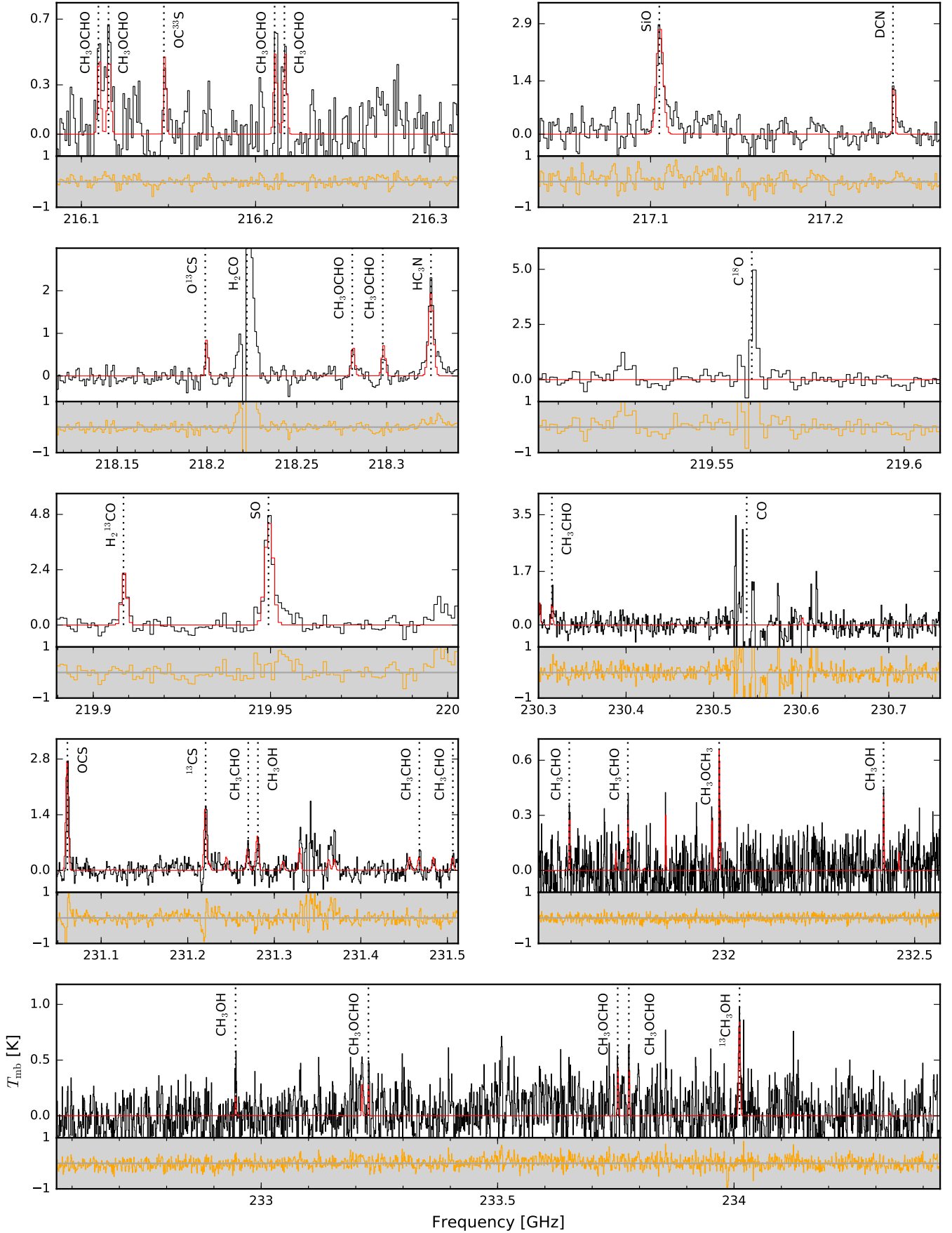


Fig. A.2. Same as Fig. A.1 but for source #6. The spectra are Hanning smoothed to the same frequency resolution, $\Delta f = 0.976$ MHz. The synthetic spectra are calculated for a temperature of 30 K, which corresponds to the very beginning of the protostellar phase.