

Supporting information

Mo Addition for Improved Electrochromic Properties of V₂O₅ Thick Films

Issam Mjejri^{†,‡}, Manuel Gaudon^{†,‡}, and Aline Rougier^{†,‡,*}

[†]CNRS, ICMCB, UMR 5026, F-33600 Pessac, France

[‡]Univ. Bordeaux, ICMCB, UMR 5026, F-33600 Pessac, France

*Corresponding Author: aline.rougier@icmcb.cnrs.fr, ICMCB-CNRS, 87 avenue du Dr Albert Schweitzer, 33608 Pessac cedex, France

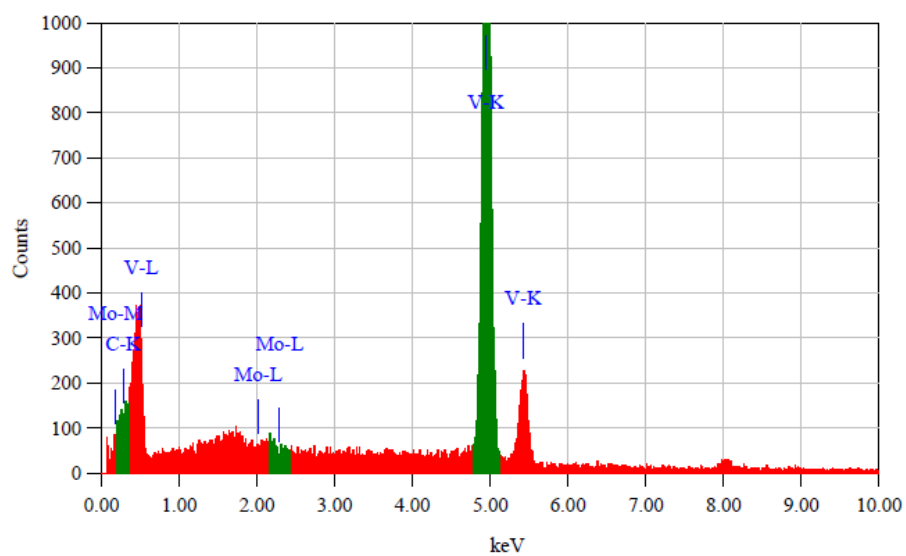


FIGURE S1. EDS spectrum of V_2O_5 :Mo films.

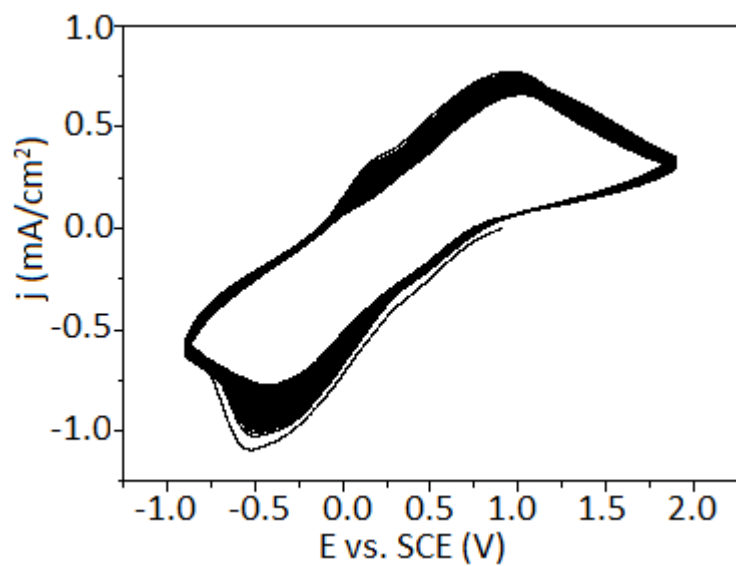


FIGURE S2. Cyclic Voltammograms of 10.0% Mo doped V_2O_5 . The films cycled in Mo: V_2O_5 / NaTFSI in EMITFSI/Pt vs SCE cells with a scan rate of 20mV/s.

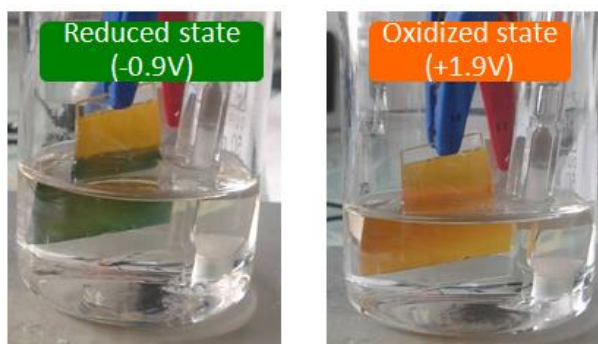


FIGURE S3. Visual appearance, orange (+1.9V) and reduced states (-0.9V).

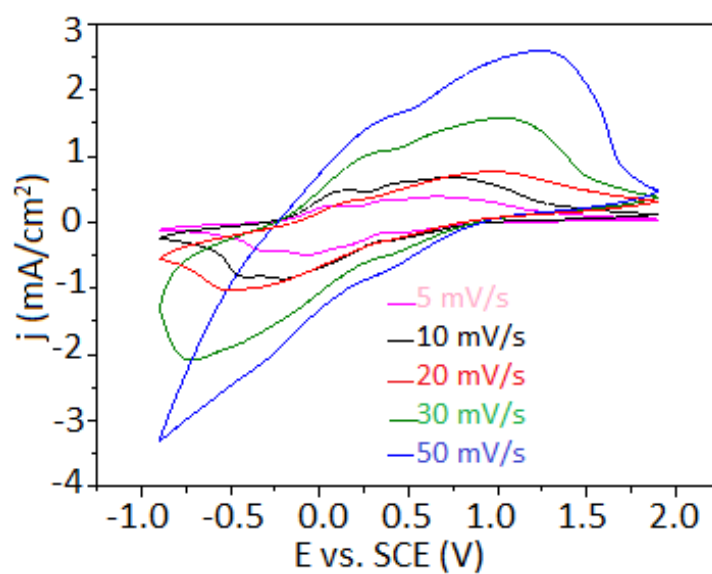


FIGURE S4. Cyclic voltammograms of the Mo- V_2O_5 film in NaTFSI in EMITFSI at different scan rates

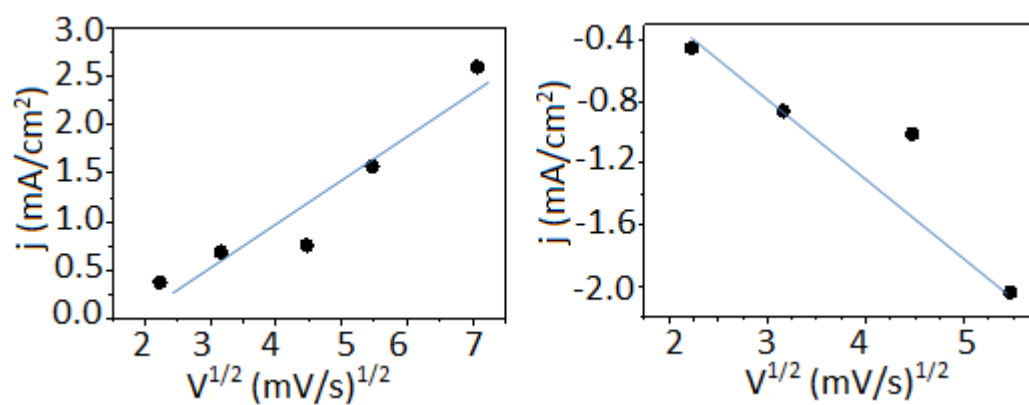


FIGURE S5. Current density vs. $v^{1/2}$

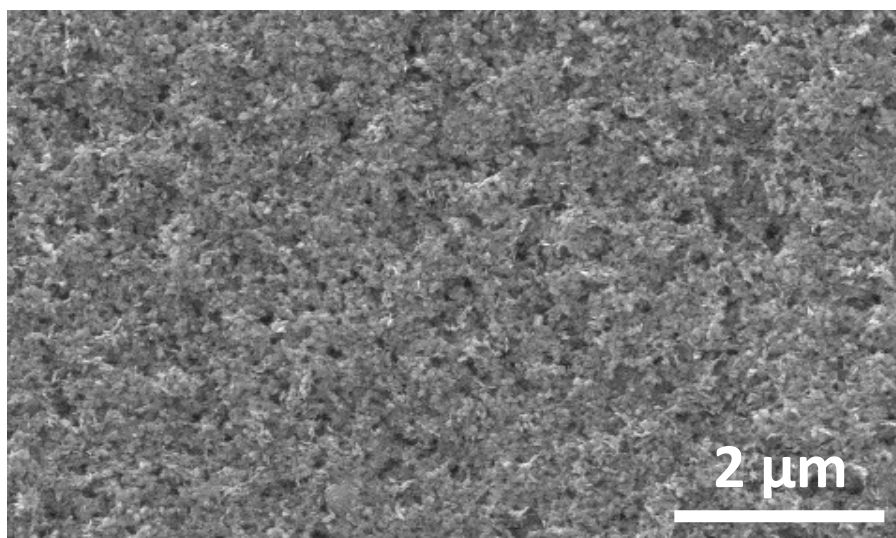


FIGURE S6. SEM of $\text{WO}_3 \cdot 2\text{H}_2\text{O}$ thick films: doctor blading.

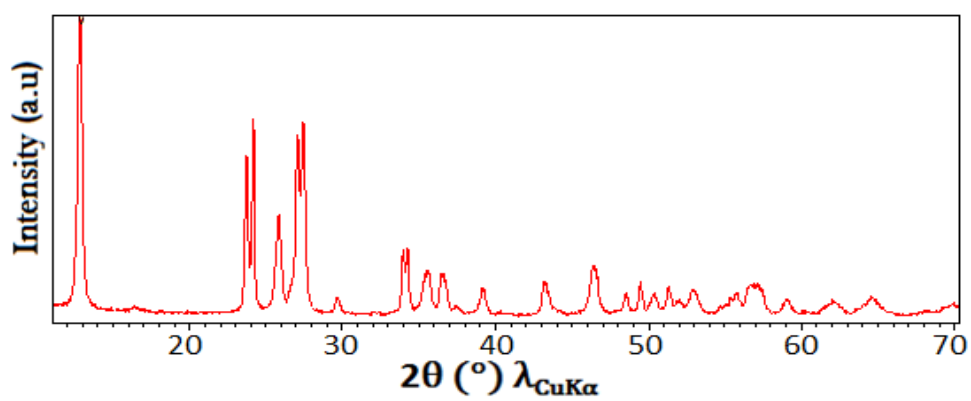


FIGURE S7. XRD of $\text{WO}_3 \cdot 2\text{H}_2\text{O}$ thick films (monoclinic P2/m).

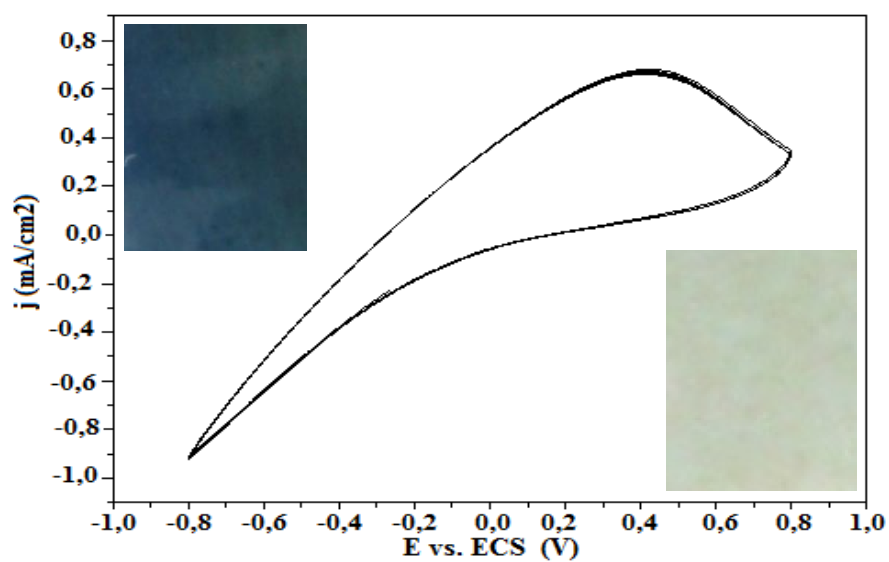


FIGURE S8. Cyclic Voltammograms of $\text{WO}_3 \cdot 2\text{H}_2\text{O}$ thick films. The films cycled in $\text{WO}_3 \cdot 2\text{H}_2\text{O} / \text{LiTFSI}$ in EMITFSI/Pt vs SCE cells with a scan rate of 20mV/s.