



HAL
open science

Anterolateral ligament injuries in knees with an anterior cruciate ligament tear: Contribution of ultrasonography and MRI

Marie Faruch Bilfeld, Etienne Cavaignac, Karine Wytrykowski, Olivia Constans, Franck Lapègue, Hélène Chiavassa Gandois, Ahmed Larbi, Nicolas Sans

► To cite this version:

Marie Faruch Bilfeld, Etienne Cavaignac, Karine Wytrykowski, Olivia Constans, Franck Lapègue, et al.. Anterolateral ligament injuries in knees with an anterior cruciate ligament tear: Contribution of ultrasonography and MRI. *European Radiology*, 2017, 28 (1), pp.58-65. 10.1007/s00330-017-4955-0 . hal-02143185

HAL Id: hal-02143185

<https://hal.science/hal-02143185>

Submitted on 29 May 2019

HAL is a multi-disciplinary open access archive for the deposit and dissemination of scientific research documents, whether they are published or not. The documents may come from teaching and research institutions in France or abroad, or from public or private research centers.

L'archive ouverte pluridisciplinaire **HAL**, est destinée au dépôt et à la diffusion de documents scientifiques de niveau recherche, publiés ou non, émanant des établissements d'enseignement et de recherche français ou étrangers, des laboratoires publics ou privés.




Open Archive Toulouse Archive Ouverte (OATAO)

OATAO is an open access repository that collects the work of some Toulouse researchers and makes it freely available over the web where possible.

This is an author's version published in: <https://oatao.univ-toulouse.fr/23081>

Official URL : <https://doi.org/10.1007/s00330-017-4955-0>

To cite this version :

Faruch Bilfeld, Marie and Cavaignac, Etienne and Wytrykowski, Karine and Constans, Olivia and Lapègue, Franck and Chiavassa Gandois, Hélène and Larbi, Ahmed and Sans, Nicolas 
Anterolateral ligament injuries in knees with an anterior cruciate ligament tear: Contribution of ultrasonography and MRI. (2017) *European Radiology*, 28 (1). 58-65. ISSN 0938-7994

Any correspondence concerning this service should be sent to the repository administrator:
tech-oatao@listes-diff.inp-toulouse.fr

Anterolateral ligament injuries in knees with an anterior cruciate ligament tear: Contribution of ultrasonography and MRI

Marie Faruch Bilfeld¹ · Etienne Cavaignac² · Karine Wytrykowski² · Olivia Constans¹ · Franck Lapègue¹ · H el ene Chiavassa Gandois¹ · Ahmed Larbi³ · Nicolas Sans¹

Abstract

Objectives To describe the pathological appearance of the anterolateral ligament (ALL) on US and MRI in knees with an anterior cruciate ligament (ACL) tear.

Methods This prospective study included 30 patients who had a suspected acute ACL tear. Their injured and contralateral knees were evaluated with radiography, US and MRI. Two radiologists evaluated the ALL on the MRI and US examinations. Agreement between these examiners' findings was evaluated with Cohen's kappa.

Results On US examination, the ALL was found to be injured in 63% of cases (19/30; $k = 0.93$). The enthesis was found to be torn in 50% of cases (15/30; $k = 1$), with the tear located at the tibial attachment in all instances. On the MRI exam, the ALL was found to be injured in 53% of cases (16/30; $k = 0.93$). The enthesis was found to be torn in 13% of cases (4/30; $k = 0.76$), with the tear located at the tibial attachment in all instances ($k = 0.93$).

Conclusion ALL injuries that occur with ACL tears are located at the tibial enthesis. They are often associated with bone avulsion at the enthesis and are better viewed on US.

Key Points

- ALL injuries often occur in combination with ACL tears.
- ALL injuries can be assessed with ultrasonography and MRI.
- ALL injuries associated with ACL tears are located at the tibial enthesis.

Keywords Anterolateral ligament · Ultrasonography · Anterior cruciate ligament · Diagnostic imaging · Segond fracture

Abbreviations

ALL Anterolateral ligament
ACL Anterior cruciate ligament

Introduction

The knee's anterolateral ligament (ALL) has been the subject of an unusual level of media attention: Claes put the spotlight on this small ligament with his cadaver findings in 2013 [1]. However, this ligament had been described more than a century ago by Dr Paul Segond, who established a link between bone avulsion of the anterolateral part of the proximal tibia and internal rotation laxity; this injury was latter named the 'Segond fracture'. He also showed that when the knee is internally rotating, tension is placed on a 'pearly, resistant, fibrous band', although this observation has mostly been forgotten [2]. Several anatomical studies reported that the ALL is present in 83–100% of individuals; it originates on the lateral femoral condyle, takes an oblique trajectory downward and forward, then inserts on the lateral edge of the tibial plateau [3–6].

✉ Marie Faruch Bilfeld
mariefaruch@hotmail.com

¹ Service de Radiologie, CHU Toulouse Purpan, place du docteur Baylac, 31059 Toulouse, France

² Service d'Orthop edie, CHU Toulouse Purpan, place du docteur Baylac, 31059 Toulouse, France

³ Service de Radiologie, H opital Universitaire Car emeau, place du Pr. Robert Debr e, 30029 Nimes, France

Many studies have looked into the the function of the ALL [7–11]. The ALL is involved in controlling internal rotation and, more generally, in controlling the knee's rotational stability [3]. In 1979, Wood's team showed that a Segond fracture was pathognomonic of an anterior cruciate ligament (ACL) tear [12]. Recently, Sonnery-Cottet showed a strong correlation between ALL injury and the persistence of rotational instability after ACL reconstruction [11]. These observations have opened new treatment avenues that combine ACL reconstruction with ALL reconstruction [13]. However, the indications for extra-articular lateral tenodesis of the ALL still need to be defined; it is in these new avenues that imaging plays a key role. There is currently no gold standard for analysing the ALL *in vivo*; although there is a strong relationship with a high-grade pivot shift test, it is not specific, and the ALL is difficult to see using arthroscopy [11, 14, 15].

In a non-injured knee, MRI can detect the ALL in 97–100% of cases [4, 16, 17]. Cavaignac et al. showed that the ALL was visible on ultrasonography (US) in 100% of cadaver specimens [18]. After an ACL tear, the ALL was found to be injured in 26% of cases in one study and 62% in another [19, 20]. US, which has superior spatial resolution to MRI and allows real-time dynamic imaging, has never been used to analyse the ALL after an ACL tear [21].

Defining the pathological appearance of the ALL is a new challenge for imaging. The objective of this study was to describe the pathological appearance of the ALL on US and MRI in knees with an ACL tear.

Materials and methods

Patient selection

This study was approved by our hospital's research ethics committee and patients provided their written consent before participating. We prospectively and randomly enrolled 38 patients who were scheduled for ACL reconstruction at our facility because of a positive MRI diagnosis of ACL tear between November 2015 and February 2016. The inclusion criteria were patients 18 years of age or older with a recent (less than 3 months old) ACL tear that was confirmed on MRI. Exclusion criterion was a history of injury or surgery on either knee.

Eight of the enrolled patients did not meet the inclusion criteria: four did not undergo the full MRI examination (due to pain or claustrophobia) and four had a prior knee injury (healthy knee in three patients and injured knee in one patient). This resulted in 30 patients (22 men, eight women) with an average age of 29.3 ± 11.6 years being analysed in this study.

Study protocol

Each included patient underwent:

- standard X-rays of the injured knee
- MRI of the injured knee
- US of both knees on the day before the ACL reconstruction procedure.

Radiography

The radiographs were performed with the patient supine using orthogonal anteroposterior X-rays (55 kV, 10 mAs) with a biplanar table (Carestream DRX Evolution, New York, NY, USA).

Magnetic resonance imaging (MRI)

A 1.5-T unit (Optima®, General Electric Medical Systems, Milwaukee, WI, USA) was used with a knee-specific coil; the knee was placed in 10° flexion for the examination. The following protocol was used: axial, coronal and sagittal proton-density-weighted images with fat saturation (PD Fat SAT) (TR 3907 ms; TE 42 ms with 3.5 mm slice thickness, 224×320 mm matrix, 160 mm field of view (FOV)) and sagittal T1-weighted (TR 620 ms, TE 13 ms, 3.5 mm slice thickness, no interslice gap, 224×380 mm matrix, 160 mm FOV) sequences. The patients underwent the MRI examination an average of 25 ± 18.65 days after the injury event.

Ultrasonography (US)

Exploration of the ALL was performed using a high-frequency probe (Aplio 500 Toshiba, 14–18 MHz probe) with the patient supine, the knee partially flexed (70°) and the foot internally rotated – a position that places tension on the ALL [18]. The ALL was analysed on a coronal slice in its major axis. The US technique consisted of locating the iliotibial band at its insertion on Gerdy's tubercle, and then translating the probe posteriorly to locate the tibial insertion of the ALL. The upper end of the probe was rotated about 20° to make it easier to view the ALL in its major axis. Patients underwent the US examination an average of 50.65 ± 29.15 days after the MRI had been performed.

Image analysis

The radiographs and MRI images were analysed in a blinded manner by two radiologists with 13 years (MFB) and 7 years (OC) of experience, respectively, using a validated analysis protocol on a workstation using our facility's PACS (McKesson®, New York, NY, USA). The US was performed

in succession by the same two radiologists; they had no knowledge of each other's results. The ALL's thickness was measured on US twice for each patient on the same day by each of the two radiologists (MF and OL), who were blinded to the other radiologist's findings

Radiography analysis

The radiographs were analysed to look for bone avulsion at the anterolateral part of the tibial plateau (Segond fracture) [2].

MRI analysis

In the first step of the analysis, the ACL tear was confirmed based on loss of the fibrillar appearance of the ACL's two bundles, which had increased signal on the PD Fat Sat sequences with fibre continuity [22]. The second step consisted of analysing the ALL and its femoral, meniscal and tibial insertions [4–6].

The ALL was considered normal if a low-intensity linear structure was visible between the femoral epicondyle and tibial plateau [16, 17, 19, 23, 24]. The ALL was considered injured if it was torn or had high signal intensity with irregular contours [19]. Avulsion of the ALL at its tibial insertion was considered a Segond fracture [5, 23, 24]. The presence of bone oedema at the tibial enthesis was labelled grade 1 if it was less than 5 mm in diameter at its widest point, and grade 2 if it was more than 5 mm in diameter [25]. Figure 1 shows examples of normal and injured ALLs on MRI.

US analysis

The ligament mid-substance and the femoral, meniscal and tibial insertions of the ALL were analysed. The

ALL was considered normal if a fibrillar anisotropic structure was visible [18]. The ALL was considered injured if it was torn, stretched or hypoechogenic with irregular contours and fluid accumulated around the ligament. The thickness of the ALL was measured in the injured and contralateral knees at the level of the tibial plateau. Avulsion of the ALL at its tibial insertion was considered a Segond fracture and labelled an 'ultrasonographic Segond' [5, 24, 26]. Figure 2 shows examples of normal and injured ALLs on US. Figure 3 shows an example of different findings on ultrasound and MRI.

Statistical analysis

The measurements done by the most experienced radiologist (MFB) were used for the descriptive analysis. Those of the second radiologist (OC) were used to assess measurement reproducibility. The descriptive analysis consisted of calculating the average and standard deviation values. Using Lancaster's method, we calculated that 30 subjects were needed for this pilot study [27]. To evaluate the reproducibility of the results, the agreement between observers was determined using Cohen's kappa (k) coefficient. The results were interpreted based on the rules defined by Landis and Koch [28]. A paired Student's t-test was used to compare the measured ALL thickness between knees. Using the receiver operating characteristic (ROC) method, we defined a threshold for the ALL thickness that allowed us to label it as injured. The correlation between the ALL's condition on US and MRI, the correlation between the presence of bone avulsion at the enthesis on US and MRI, and the correlation between the ALL's condition on MRI and the degree of bone oedema was analysed using Pearson's Chi-squared test.

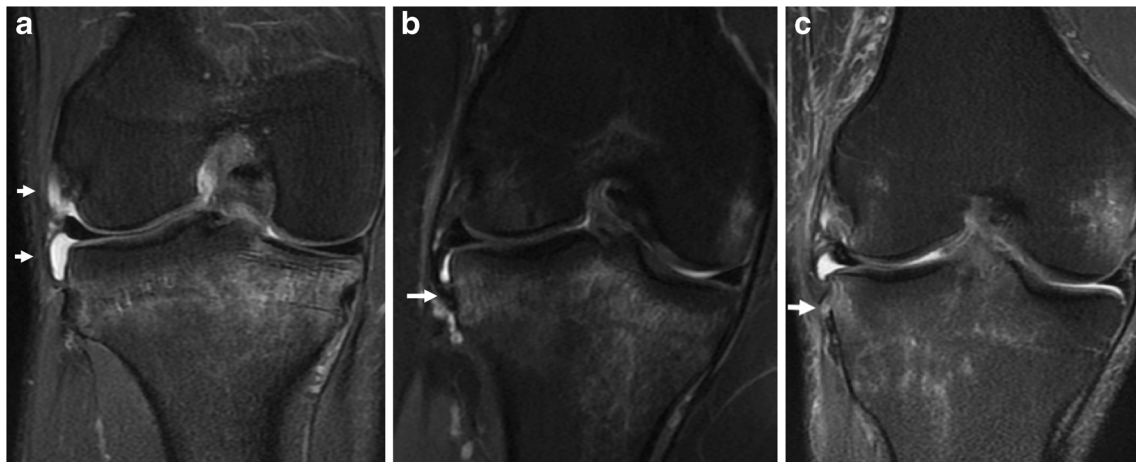
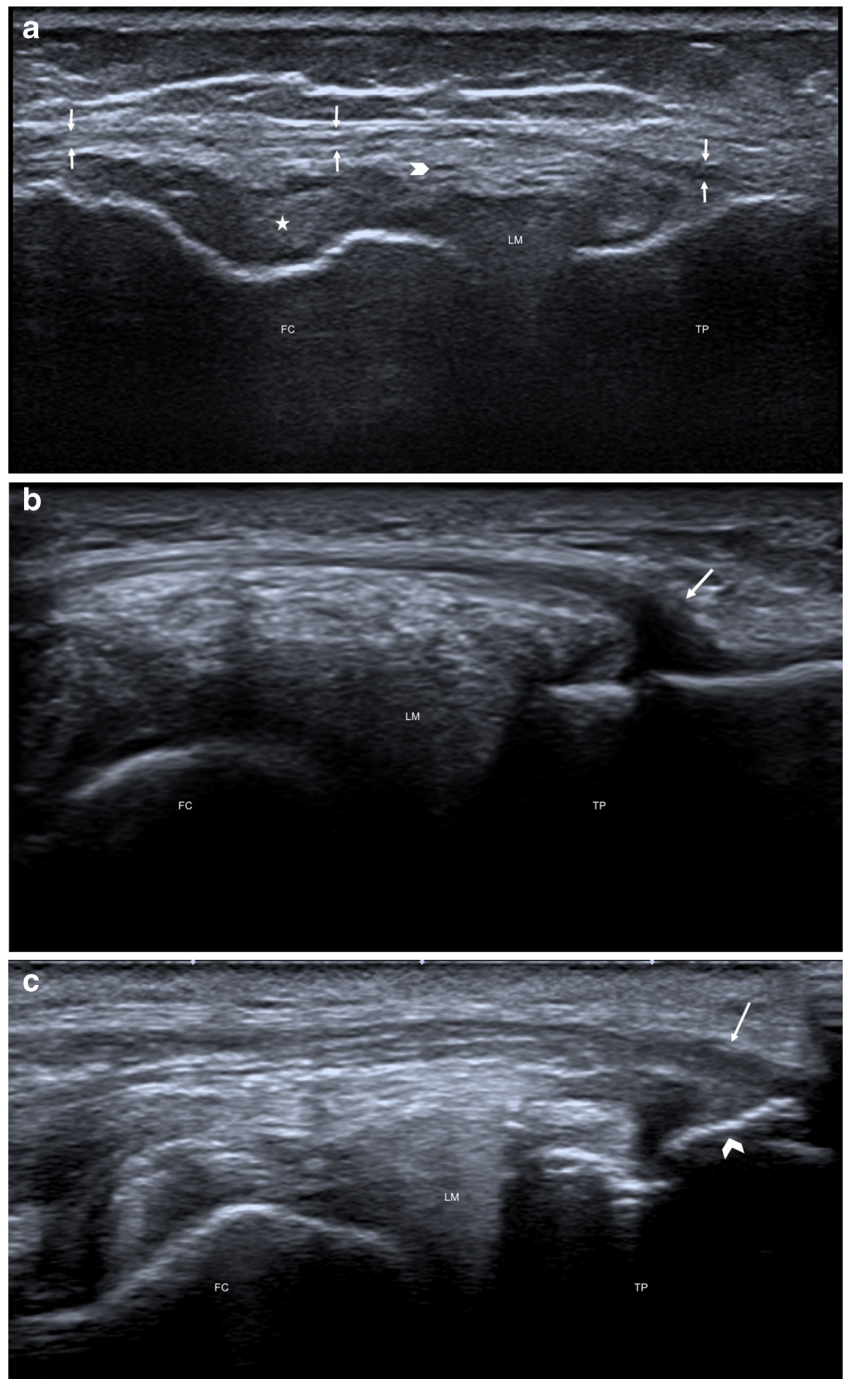


Fig. 1 Appearance of anterolateral ligament (ALL) on MRI. Anterolateral ligament of the knee in the coronal plane in fat saturated proton density weighted sequences. (A) Normal ALL. (B) Injured ALL:

hyperintensity at tibial insertion and increased thickness. (C) Segond fracture: bone avulsion at tibial enthesis combined with hyperintensity at thickened tibial insertion

Fig. 2 Appearance of anterolateral ligament (ALL) on ultrasonography. Major axis of the anterolateral ligament of the knee; coronal plane image showing the ligament in the major axis. **(A)** Ultrasonography of normal ALL (arrows): hypoechoogenic, fibrillar, thin structure crossing superficially the inferior genicular artery (arrow head) and popliteal tendon (star). **(B)** Ultrasonography of injured ALL: the tibial insertion is hypoechoogenic and thickened (arrow) with fluid accumulation in the soft tissues around the ligament. **(C)** Ultrasonography of injured ALL: the tibial insertion is hypoechoogenic and thickened (arrow) and there is a bone avulsion at the tibial enthesis (arrow head), i.e. Segond fracture. *FC* femoral condyle, *LM* lateral meniscus, *TP* tibial plateau



The statistical tests were carried out with Excel 2011 and MedCalc software®. A threshold of $p < 0.05$ was used to determine statistical significance in all tests.

Results

Radiography analysis

On the radiographs, one of the 30 patients (3%) had bone avulsion of the anterolateral portion of the tibial plateau.

MRI analysis

All 30 patients had a tear in both ACL bundles confirmed on MRI. The ALL was visible in 96% of patients (29/30; $k = 0.91$); the tibial insertion was visible in 96% of patients (29/30; $k = 1$), the femoral insertion in 40% (12/30; $k = 0.86$) and the meniscal insertion in 93% (28/30; $k = 1$) (Table 1).

In the 30 patients analysed, the ALL was damaged in 53% of cases (16/30; $k = 0.93$). The enthesis was torn in 13% of patients (4/30; $k = 0.76$), with the tear located at

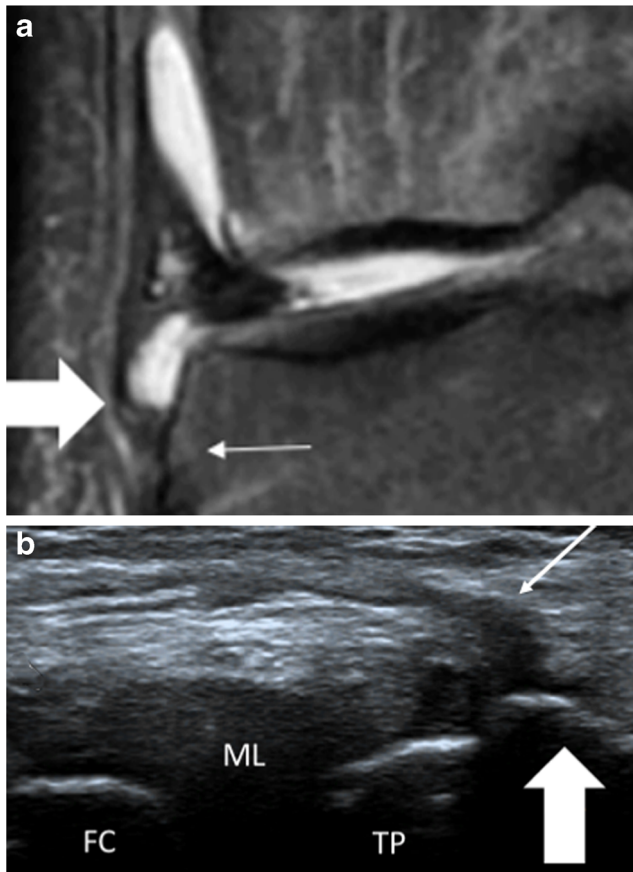


Fig. 3 Example of different findings on ultrasound and MRI. MRI coronal PD Fat Sat sequence (A) shows thickening at the anterolateral ligament (ALL)'s tibial insertion (thick arrow) without damage to the bone cortex at its enthesis, which is the site of grade 1 oedema. Ultrasound in the coronal plane (B) shows thickening at the ALL's tibial insertion (thin arrow) and a discontinuity in the cortex (thick arrow) at its enthesis. FC femoral condyle, LM lateral meniscus, TP tibial plateau

the tibial attachment in all instances ($k = 0.93$). In the patients with a torn enthesis, the ALL was thickened with fluid accumulation in the soft tissues around the ligament (4/30; $k = 0.91$). In 40% of patients (12/30; $k = 0.89$), the ALL was found to be injured on MRI, with no detectable detachment visible at the enthesis.

The presence of bone oedema at the enthesis on MRI is summarized in Table 2. There was a significant correlation between the condition of the ALL on MRI and the oedema grade (Chi-squared test = 8, $p < 0.05$).

Table 1 Detection of anterolateral ligament (ALL) in sections on magnetic resonance imaging (MRI) and ultrasonography (US)

	US			MRI		
	No.	Frequency	Kappa (Cohen)	No.	Frequency	Kappa (Cohen)
Femoral insertion	29	96%	0.63	12	40%	0.86
Meniscal insertion	0	0%	1	28	93%	1
Tibial insertion	30	100%	1	29	96%	1

US analysis

The ALL was visible in all patients; the tibial insertion was visible in 100% of patients (30/30; $k = 1$) and the femoral insertion in 96% of cases (29/30; $k = 0.63$), but the meniscal insertion was not visible in any patient (0%; $k = 1$) (Table 1).

In the 30 patients analysed, the ALL was injured in 63% of cases (19/30; $k = 0.93$). The enthesis was torn (sonographic Segond) in 50% of cases (15/30; $k = 1$), with the tear located at the tibial attachment in every instance. All patients with enthesis involvement (15/30; $k = 1$) had an ALL that appeared injured. In 13% of cases (4/30; $k = 0.91$), the ALL was abnormal on the ultrasound examination but the enthesis was intact (Table 3).

The average thickness of the injured ALL was 1.46 ± 0.27 mm (min = 1.2 mm; max = 2.1 mm). The average thickness of the ALL when it was detached at the enthesis was 1.52 ± 0.27 mm (min = 1.3 mm; max = 2.1 mm). The average thickness of the non-injured ALL was 0.97 ± 0.13 mm (min = 0.7 mm; max = 1.1 mm). The average thickness of the ALL in the healthy contralateral knees was 0.91 ± 0.12 mm (min = 0.8 mm; max = 1.1 mm) (Table 3). Based on the ROC method, the ALL thickness threshold corresponding to an injured ligament was > 1.1 mm (sensitivity = 89.5%, specificity = 97.56%, $p < 0.05$).

Comparison of the US and MRI exams for the ALL

There was a significant correlation between the US and MRI findings for the ALL (Chi-squared test = 16, $p < 0.001$). The condition of the ALL was found to differ on MRI and US in three patients: the ALL was classified as injured on US and uninjured on MRI.

The detection of bone avulsion at the enthesis differed in 11 patients: in all of these, US found bone avulsion while the MRI did not. Of these 11 patients, eight had grade 1 bone oedema and three had grade 2 bone oedema on the MRI. There was a significant correlation between US and MRI for the description of bone avulsion at the enthesis (Chi-squared test = 4; $p < 0.05$).

Discussion

This study described the pathological appearance of the ALL when associated with an ACL tear on US and MRI, with a strong correlation between the two imaging modalities (Pearson's Chi-squared = 16; $p < 0.001$).

Table 2 Anterolateral ligament (ALL) injuries and associated bone oedema observed on MRI

	No. of patients	Frequency
Normal ALL	14	47%
Bone oedema (grade 0)	6	20%
Bone oedema (grade 1)	6	20%
Bone oedema (grade 2)	2	6%
Injured ALL	16	53%
Bone oedema (grade 0)	0	0%
Bone oedema (grade 1)	11	36%
Bone oedema (grade 2)	5	16%
Association with bony avulsion of ALL from enthesis	4	13%
Bone oedema (grade 0)	0	0%
Bone oedema (grade 1)	3	10%
Bone oedema (grade 2)	1	3%

US was able to detect three more cases of ALL injury than did MRI. This can be explained by the fact that US has better spatial resolution and is therefore more sensitive for detecting this small ligament – which normally measures a few millimetres – that had a maximum thickness of 2.1 mm in this study [21]. The other reason has to do with the MRI method: the acquisition was performed in a strict coronal plane, not in the ALL plane, which is angled down and forward. Three-dimensional isotropic sequences could improve the detection of ALL injuries using MRI; these sequences have been used in non-injured knees, with the ALL being detected in 100% of cases [29].

We found an ALL injury rate of 43% on MRI and 53% on US. These results agree with published results on ALL injury rates associated with ACL tears: Van Dyck found a 26% combined ALL and ACL injury rate in 90 MRI cases, while Claes found a 78.8% rate in a series of 206 MRI cases [19, 30].

In our study, all of the ALL injuries were at its tibial insertion. Our results are consistent with the Van Dyck and Claes studies, who found tibial enthesis involvement in 71.8% and 77.8% of cases, respectively.

A Segond fracture was identified in 3% of patients on the radiographs, 13% of patients on MRI and 50% of patients on US. In their studies, Van Dyck and Claes found a Segond fracture in 37% and 1.8% of cases, respectively [19, 30]. The rate of Segond fractures found in the US portion of our study is greater than the one found in the MRI portion because the superior spatial resolution of US makes it possible to detect bone avulsions, even small ones [21]. The MRI protocol used in this study is the same one we use routinely to evaluate

injured knees at our facility; it includes a T1-weighted sequence in the sagittal plane. Coronal plane images could have provided a better view of the cortex of the ALL enthesis and made it possible to diagnose more Segond fractures with MRI.

Our study also found a statistically significant correlation between the presence of bone oedema at the tibial enthesis and ALL injury, but found no correlation between the degree of bone oedema and the presence of a Segond fracture. In our study, all of the injured ALLs also had bone oedema over Gerdy's tubercle. Of the four Segond fractures identified on MRI, three had grade 2 oedema and one had grade 1 oedema.

It was easier to see the ALL on US than on MRI. As in the Cavaignac and Oshima studies, US could identify the ALL in 100% of cases [18, 31]. As in both of those studies, the ALL's meniscal insertion was not visible, while its tibial insertion was visible in all cases. The femoral insertion was visible in 96% of cases in our study, versus 100% in the Cavaignac study and 77% in the Oshima study. The ALL's meniscal insertion was not visible on US because of the perpendicular orientation of the US probe to the ALL's fibres that insert on the meniscus.

MRI identified the ALL in 96% of patients in our study. The ALL has been analysed by MRI by several other teams; the consensus is that the ALL is difficult to analyse along its entire length. Claes identified the entire ALL in 76% of cases, Helito in 71.7% of cases (89.7% for the femoral portion, 94% for the meniscal portion and 79.4% for the tibial portion) and Taneja identified the entire ALL by MRI in only 11% of cases [16, 17, 30]. The challenges with identifying the ALL on MRI

Table 3 Appearance of the anterolateral ligament (ALL) on ultrasonography

	No. of patients	Frequency	Kappa (Cohen)	Average ALL thickness measured
Normal ALL	11	37%	0.93	0.97 mm (max 1.3; min 0.7)
Injured ALL	19	63%	0.93	1.46 mm (max 2.1; min 1.2)
Avulsion of ALL from enthesis	15	50%	1	1.52 mm (max 2.1; min 1.3)

can be attributed to this ligament's orientation and thinness, and also to its proximity to neighbouring ligament structures, which makes it difficult to analyse its proximal bone attachment [4]. Hartigan et al. reported that the ALL was visible on MRI in 100% of cases, but found poor interobserver reproducibility for the analysis of ALL injuries [20].

The superior ability of US to detect the ALL (100%) relative to MRI (96%) can also be explained by the position in which the examination is performed: US is carried out with the knee flexed and internally rotated (which places tension on the ALL), while MRI is performed in 10° flexion and neutral rotation.

Interobserver correlation was excellent when the ALL's thickness was measured on US (k between 0.93 and 1). The thickness was not measured on MRI, as it was too thin to be measured reliably with existing methods. Oshima reported the ALL's thickness on MRI as 1.3 mm, while Claes found it to be 0.83 mm in a cadaver study [1, 31]. With US, we found the average thickness of the ALL in the non-injured contralateral knee to be 0.97 ± 0.13 mm (min = 0.7, max = 1.3 mm) over the tibial plateau, which is consistent with the above-mentioned studies [1]. Our study found a statistically significant correlation between the ALL being thicker than 1.1 mm and it being injured. The ALL's average thickness was greater (1.52 ± 0.27 mm; min = 1.5 mm; max = 2.1 mm) when it was associated with a Segond fracture.

Our study has certain limitations. The US examination was performed on a different day to the MRI exam. Since a larger number of injured ALLs were found on US, the time that elapsed between these two examinations may have allowed the inflammation around the ligament to resolve, thereby making it easier to determine whether the ALL was injured. This was a preliminary study on a small number of patients, as it is a component of a pilot study evaluating the intra-operative function of the ALL using clinical testing such as the pivot shift. This on-going work aims to correlate the ALL's status on US with the indications for extra-articular lateral tenodesis. Finally, a comparison of the diagnostic relevance of the two imaging methods could not be performed as there is currently no gold standard for analysing the ALL.

No validated arthroscopy method currently exists for viewing the ALL during ACL reconstruction procedures; however, two approaches have been published [15, 32]. Sonnery-Cottet et al. published an arthroscopic surgical technique for viewing the ALL. This is an aggressive technique that requires excision of the anterolateral capsule to expose the ALL. This was a technical note that did not disclose the inherent morbidity of this technique. It was a cadaver study that aimed to prove the ALL's existence. It was not an identification method that can be used during ALL reconstruction. Ferretti et al. performed ACL reconstruction with a graft passed around the lateral condyle. They made an incision over the ALL, which allowed them to determine whether it was injured. Of note, they found the same prevalence of ALL injury as the prevalence found with US. The ACL reconstruction technique

differs from the one used by the surgical team at our facility (without a lateral incision). The technique used by Ferretti and colleagues is more invasive; no study has compared these two techniques. Our surgical team and the research ethics board at our facility did not support altering our surgical practices for an observational study.

The role of these two imaging modalities must still be defined. Nevertheless, the accessibility and low cost of US, and especially the possibility of placing the ligament under tension during the examination and of performing dynamic manoeuvres, make US very attractive for analysing the ALL. Since MRI is routinely performed to diagnose ACL tears, use of three-dimensional sequences and acquisition performed in internal rotation could make it more effective for analysing the ALL.

Conclusion

In this study, we found that in patients with an ACL injury, the ALL is also injured in 43% of cases based on MRI and 53% of cases based on US. US made it possible to detect a larger number of tibial enthesis detachments called 'Segond-like fractures' than did MRI; all of the ALL injuries occurred at the tibial enthesis. Based on our US findings, an ALL that is thicker than 1.1 mm at the tibial plateau can be considered injured. Because it allows the ALL to be evaluated under tension, US could have an important role as a supplementary assessment for anterolateral instability of the knee.

Acknowledgements The authors wish to thank Joanne Archambault, PhD for the editorial assistance provided during the preparation of this manuscript.

Compliance with ethical standards

Guarantor The scientific guarantor of this publication is Marie Faruch Bilfeld.

Conflict of interest The authors of this manuscript declare no relationships with any companies whose products or services may be related to the subject matter of the article.

Funding The authors state that this work has not received any funding.

Statistics and biometry One of the authors has significant statistical expertise.

Informed consent Written informed consent was obtained from all subjects (patients) in this study.

Ethical approval Institutional review board approval was obtained.

Methodology

- prospective
- cross sectional, diagnostic study
- performed at one institution

References

1. Claes S, Vereecke E, Maes M, Victor J, Verdonk P, Bellemans J (2013) Anatomy of the anterolateral ligament of the knee. *J Anat* 223:321 328
2. Segond P (1879) Recherches cliniques et expérimentales sur les épanchements sanguins du genou par entorse [Internet]. National Library of France, 1879: Paris [cité 5 mai 2015]. 1 85 p. Disponible sur: <http://www.ncbi.nlm.nih.gov/pubmed>
3. Pomajzl R, Maerz T, Shams C, Guettler J, Bicos J (2015) A review of the anterolateral ligament of the knee: current knowledge regarding its incidence, anatomy, biomechanics, and surgical dissection. *Arthroscopy* 31:583 591
4. Catherine S, Litchfield R, Johnson M, Chronik B, Getgood A (2015) A cadaveric study of the anterolateral ligament: re-introducing the lateral capsular ligament. *Knee Surg Sports Traumatol Arthrosc* 23: 3186 3195
5. Dodds AL, Halewood C, Gupte CM, Williams A, Amis AA (2014) The anterolateral ligament: Anatomy, length changes and association with the Segond fracture. *Bone Joint J* 96 B:325 331
6. Vincent J P, Magnussen RA, Gezmez F, Uguen A, Jacobi M, Weppe F et al (2012) The anterolateral ligament of the human knee: an anatomic and histologic study. *Knee Surg Sports Traumatol Arthrosc* 20:147 152
7. Kennedy MI, Claes S, Fuso FAF, Williams BT, Goldsmith MT, Turnbull TL et al (2015) The Anterolateral Ligament: An Anatomic, Radiographic, and Biomechanical Analysis. *Am J Sports Med* 43:1606 1615
8. Helito CP, Bonadio MB, Rozas JS, Wey JMP, Pereira CAM, Cardoso TP et al (2016) Biomechanical study of strength and stiffness of the knee anterolateral ligament. *BMC Musculoskelet Disord* 17:193
9. Lutz C, Sonnery Cottet B, Niglis L, Freychet B, Clavert P, Imbert P (2015) Behavior of the anterolateral structures of the knee during internal rotation. *Orthop Traumatol Surg Res* 101:523 528
10. Parsons EM, Gee AO, Spiekerman C, Cavanagh PR (2015) The biomechanical function of the anterolateral ligament of the knee. *Am J Sports Med* 43:669 674
11. Sonnery Cottet B, Lutz C, Daggett M, Dalmay F, Freychet B, Niglis L et al (2016) The Involvement of the Anterolateral Ligament in Rotational Control of the Knee. *Am J Sports* 44:1209 1214
12. Woods GW, Stanley RF, Tullos HS (1979) Lateral capsular sign: x ray clue to a significant knee instability. *Am J Sports Med* 7:27 33
13. Sonnery Cottet B, Thauinat M, Freychet B, Pupim BHB, Murphy CG, Claes S (2015) Outcome of a Combined Anterior Cruciate Ligament and Anterolateral Ligament Reconstruction Technique With a Minimum 2 Year Follow up. *Am J Sports Med* 43:1598 1605
14. Dodds AL, Gupte CM, Neyret P, Williams AM, Amis AA (2011) Extra articular techniques in anterior cruciate ligament reconstruction: a literature review. *J Bone Joint Surg Br* 93:1440 1448
15. Sonnery Cottet B, Archbold P, Rezende FC, Neto AM, Fayard J M, Thauinat M (2014) Arthroscopic Identification of the Anterolateral Ligament of the Knee. *Arthrosc Technol* 3:e389 e392
16. Taneja AK, Miranda FC, Braga CAP, Gill CM, Hartmann LGC, Santos DCB et al (2015) MRI features of the anterolateral ligament of the knee. *Skeletal Radiol* 44:403 410
17. Helito CP, Helito PVP, Costa HP, Bordalo Rodrigues M, Pecora JR, Camanho GL et al (2014) MRI evaluation of the anterolateral ligament of the knee: assessment in routine 1.5 T scans. *Skeletal Radiol* 43:1421 1427
18. Cavaignac E, Wytrykowski K, Reina N, Murgier J, Laumond G, Faruch M et al (2016) Ultrasonographic Identification of the Anterolateral Ligament of the Knee. *Arthroscopy* 32:120 126
19. Van Dyck P, Clockaerts S, Vanhoenacker FM, Lambrecht V, Wouters K, De Smet E et al (2016) Anterolateral ligament abnormalities in patients with acute anterior cruciate ligament rupture are associated with lateral meniscal and osseous injuries. *Eur Radiol* 26:3383 3391
20. Hartigan DE, Carroll KW, Kosarek FJ, Piasecki DP, Fleischli JF, D'Alessandro DF (2016) Visibility of Anterolateral Ligament Tears in Anterior Cruciate Ligament Deficient Knees With Standard 1.5 Tesla Magnetic Resonance Imaging. *Arthroscopy* 32:2061 2065
21. Nazarian LN (2008) The top 10 reasons musculoskeletal sonography is an important complementary or alternative technique to MRI. *AJR Am J Roentgenol* 190:1621 1626
22. Robertson PL, Schweitzer ME, Bartolozzi AR, Ugoni A (1994) Anterior cruciate ligament tears: evaluation of multiple signs with MR imaging. *Radiology* 193:829 834
23. Kosy JD, Mandalia VI, Anaspure R (2015) Characterization of the anatomy of the anterolateral ligament of the knee using magnetic resonance imaging. *Skeletal Radiol* 44:1647 1653
24. De Maeseneer M, Boulet C, Willekens I, Lenchik L, De Mey J, Cattrysse E et al (2015) Segond fracture: involvement of the iliotibial band, anterolateral ligament, and anterior arm of the biceps femoris in knee trauma. *Skeletal Radiol* 44:413 421
25. Brittberg M, Winalski CS (2003) Evaluation of cartilage injuries and repair. *J Bone Joint Surg Am* 85 A:58 69
26. Porrino J, Maloney E, Richardson M, Mulcahy H, Ha A, Chew FS (2015) The anterolateral ligament of the knee: MRI appearance, association with the Segond fracture, and historical perspective. *AJR Am J Roentgenol* 204:367 373
27. Lancaster GA, Dodd S, Williamson PR (2004) Design and analysis of pilot studies: recommendations for good practice. *J Eval Clin Pract* 10:307 312
28. Landis JR, Koch GG (1977) The measurement of observer agreement for categorical data. *Biometrics* 33:159 174
29. Yokosawa K, Sasaki K, Muramatsu K, Ono T, Izawa H, Hachiya Y (2016) Visualization of Anterolateral Ligament of the Knee Using 3D Reconstructed Variable Refocus Flip Angle Turbo Spin Echo T2 Weighted Image. *Nihon Hoshasen Gijutsu Gakkai Zasshi* 72: 416 423
30. Claes S, Bartholomeeusen S, Bellemans J (2014) High prevalence of anterolateral ligament abnormalities in magnetic resonance images of anterior cruciate ligament injured knees. *Acta Orthop Belg* 80:45 49
31. Oshima T, Nakase J, Numata H, Takata Y, Tsuchiya H (2016) Ultrasonography imaging of the anterolateral ligament using real time virtual sonography. *Knee* 23:198 202
32. Ferretti A, Monaco E, Fabbri M, Maestri B, De Carli A (2017) Prevalence and Classification of Injuries of Anterolateral Complex in Acute Anterior Cruciate Ligament Tears. *Arthroscopy* 33:147 154