



HAL
open science

H-1-NMR-Based Metabolic Profiling of Maternal and Umbilical Cord Blood Indicates Altered Materno-Foetal Nutrient Exchange in Preterm Infants

Illa Tea, Gwenaëlle Le Gall, Alice Kuester, Nadia Guignard, Marie Cécile Alexandre-Gouabau, Dominique Darmaun, Richard J. Robins

► **To cite this version:**

Illa Tea, Gwenaëlle Le Gall, Alice Kuester, Nadia Guignard, Marie Cécile Alexandre-Gouabau, et al.. H-1-NMR-Based Metabolic Profiling of Maternal and Umbilical Cord Blood Indicates Altered Materno-Foetal Nutrient Exchange in Preterm Infants. PLoS ONE, 2012, 7 (1), 10.1371/journal.pone.0029947 . hal-02142704

HAL Id: hal-02142704

<https://hal.science/hal-02142704>

Submitted on 29 May 2020

HAL is a multi-disciplinary open access archive for the deposit and dissemination of scientific research documents, whether they are published or not. The documents may come from teaching and research institutions in France or abroad, or from public or private research centers.

L'archive ouverte pluridisciplinaire **HAL**, est destinée au dépôt et à la diffusion de documents scientifiques de niveau recherche, publiés ou non, émanant des établissements d'enseignement et de recherche français ou étrangers, des laboratoires publics ou privés.

¹H-NMR-Based Metabolic Profiling of Maternal and Umbilical Cord Blood Indicates Altered Materno-Foetal Nutrient Exchange in Preterm Infants

Illa Tea^{1*}, Gwénaëlle Le Gall^{1,2}, Alice Küster^{3,4,5}, Nadia Guignard¹, Marie-Cécile Alexandre-Gouabau^{3,4}, Dominique Darmaun³, Richard J. Robins¹

1 Elucidation of Biosynthesis by Isotopic Spectrometry Group, Unit for Interdisciplinary Chemistry, Synthesis-Analysis-Modelling (CEISAM), University of Nantes–CNRS UMR 6230, Nantes, France, **2** Institute of Food Research, Norwich Research Park, Colney, Norwich, United Kingdom, **3** UMR Physiologie des Adaptations Nutritionnelles (PhAN), INRA, CNRH, Nantes, France, **4** Faculty of Medicine, University of Nantes, Nantes, France, **5** Neonatology and INSERM, Centre d'Investigation Clinique (CIC), CHU de Nantes, Nantes, France

Abstract

Background: Adequate foetal growth is primarily determined by nutrient availability, which is dependent on placental nutrient transport and foetal metabolism. We have used ¹H nuclear magnetic resonance (NMR) spectroscopy to probe the metabolic adaptations associated with premature birth.

Methodology: The metabolic profile in ¹H NMR spectra of plasma taken immediately after birth from umbilical vein, umbilical artery and maternal blood were recorded for mothers delivering very-low-birth-weight (VLBW) or normo-ponderal full-term (FT) neonates.

Principal Findings: Clear distinctions between maternal and cord plasma of all samples were observed by principal component analysis (PCA). Levels of amino acids, glucose, and albumin-lysyl in cord plasma exceeded those in maternal plasma, whereas lipoproteins (notably low-density lipoprotein (LDL) and very low-density lipoprotein (VLDL) and lipid levels were lower in cord plasma from both VLBW and FT neonates. The metabolic signature of mothers delivering VLBW infants included decreased levels of acetate and increased levels of lipids, pyruvate, glutamine, valine and threonine. Decreased levels of lipoproteins glucose, pyruvate and albumin-lysyl and increased levels of glutamine were characteristic of cord blood (both arterial and venous) from VLBW infants, along with a decrease in levels of several amino acids in arterial cord blood.

Conclusion: These results show that, because of its characteristics and simple non-invasive mode of collection, cord plasma is particularly suited for metabolomic analysis even in VLBW infants and provides new insights into the materno-foetal nutrient exchange in preterm infants.

Citation: Tea I, Le Gall G, Küster A, Guignard N, Alexandre-Gouabau M-C, et al. (2012) ¹H-NMR-Based Metabolic Profiling of Maternal and Umbilical Cord Blood Indicates Altered Materno-Foetal Nutrient Exchange in Preterm Infants. PLoS ONE 7(1): e29947. doi:10.1371/journal.pone.0029947

Editor: François Blachier, National Institute of Agronomic Research, France

Received: August 22, 2011; **Accepted:** December 8, 2011; **Published:** January 23, 2012

Copyright: © 2012 Tea et al. This is an open-access article distributed under the terms of the Creative Commons Attribution License, which permits unrestricted use, distribution, and reproduction in any medium, provided the original author and source are credited.

Funding: The study was investigator-initiated and funded by the Hospital of Nantes, the Region of the Pays-de-la Loire, the "Centre National de la Recherche Scientifique" (CNRS) and the University of Nantes. This study was supported, in part, by a grant from the Délégation à la Recherche Clinique (DRC CHU de Nantes, France) and by the project "Nutrition Périnatale et Empreinte Métabolique" (NUPEM) (Region of the Pays de la Loire). No additional external funding received for this study. The funders had no role in study design, data collection and analysis, decision to publish, or preparation of the manuscript.

Competing Interests: The authors have declared that no competing interests exist.

* E-mail: illa.tea@univ-nantes.fr

‡ These authors contributed equally to this work.

Introduction

The human foetus triples its weight during the last trimester of pregnancy, and is entirely dependent on 'imported' nutrients to cover its protein and energy needs. As protein accretion is a prerequisite for growth, the supply of amino acids from the maternal circulation is crucial to support foetal growth. The transfer of amino acids across the placenta from maternal to foetal circulations is complex [1] as three barriers are involved: nutrients are first taken up from the maternal circulation across the microvillous membrane, diffuse through the cellular cytoplasm, and finally are transported across the placental basal membrane

into the umbilical circulation [2]. The first step of the transfer of amino acids and glucose through the placenta has been well studied but the transfer towards the foetus is less well described [2–4]. Understanding this process and its regulation will help develop interventional nutritional strategies, particularly in situations such as intrauterine growth restriction (IUGR) or preterm delivery when materno-foetal transfer is impaired (see [1] and refs therein) or foetal substrate synthesis is inadequate [5,6].

During normal pregnancy, the concentration of most amino acids is higher in foetal than in maternal plasma. Several studies [2,6–9] have shown that overall amino acid concentration is decreased in foetuses with IUGR, particularly for branched-chain

amino acids, in spite of a concomitant elevation in maternal plasma concentrations. Accordingly, the rate of materno-foetal amino acid transfer, which can be assessed with techniques exploiting the infusion of stable-isotope-labelled amino acids, is reduced in IUGR infants, compared with control babies [10] and the drop in the materno-foetal isotope enrichment ratio depends on the severity of IUGR [11]. Amino acid transfer was also found to be affected by prematurity [12], maternal diabetes [13] or hypoxia [14].

In addition, deficiencies in maternal plasma can obviously affect foetal nutrient supply, and it is essential to establish whether insufficiency is related to altered materno-foetal supply or to foetal metabolism. As an example, we have recently shown that very low birth weight (VLBW) preterm neonates possess a fully active capacity to synthesize glutathione (GSH), a key antioxidant, and that the observed depletion in umbilical blood may arise from inadequate cysteine availability from the maternal venous blood supply to the placenta [15].

Most studies of materno-foetal nutrient gradients have focused on specific nutrients, and do not provide a full-picture of nutrient supply to the foetus. Apart from amino acids [1,10–14], the materno-foetal exchange of other essential nutrients has been poorly explored. Furthermore, transfer across the placenta of other substrates, such as those involved in energy metabolism, has not been adequately investigated.

To get further insight into the materno-foetal nutrient transfer and assess metabolic profiles of the VLBW neonates and their mothers, a metabolomic approach based on nuclear magnetic resonance (NMR) spectroscopy has been adopted, as we believe this offers the best prospect to highlight potential metabolic deregulation in VLBW infants. The advantage of using high resolution ¹H NMR metabolomic profiling is that it is possible to assess the main plasma proton-containing metabolites even at sub-mM concentrations in a body fluid, with an excellent precision and reproducibility [16].

The most commonly used biological fluids sampled for metabolomics studies are urine, blood plasma or serum. However, the use of non-invasive methods is an essential requirement in neonatal medicine, especially in studying VLBW infants. Although the metabolomic analysis of urine has been used to assess the overall metabolic status of term and preterm neonates [17,18] and is appropriate to explore postnatal metabolic maturation, it does not provide any insight into prenatal metabolite supply and materno-foetal substrate transfer at birth. One previous study using ¹H NMR spectroscopy to examine plasma collected from umbilical and maternal veins of mothers delivering healthy normo-ponderal full-term (FT) neonates has been reported [19]. While this study surveyed the presence of lactate, alanine, valine, and lipoproteins in maternal and cord venous blood, neither umbilical arterial blood plasma nor the effect of VLBL were analyzed.

The working hypothesis adopted is that there will be general changes that can be associated with preterm natural delivery. In order to seek general metabolic differences between term and preterm deliveries, we have included in our study VLBW group subjects with a known state of disease (diabetes), with pregnancy-induced hypertension and with no evident identified cause of premature delivery. We also include natural delivery and delivery by caesarean section. Hence, we aim to obtain insight into the materno-foetal metabolite exchange without any particular bias. For this group, and a control group of FT normal delivery subjects, we report a metabolomic analysis on plasma from three sources: the umbilical vein, which provides information about blood directed from the placenta to the foetus; one of the two

umbilical arteries, representing blood of the foetus redistributed to the placenta; the maternal venous blood collected at delivery, in order to relate information obtained from umbilical blood to the status of the mothers.

Materials and Methods

Patients

The study was carried out on 8 VLBW infant-mother pairs and 8 control FT infant-mother pairs. The size of the population, while small, proved adequate to identify a number of biomarkers (see below). In view of the difficulty of recruiting members of the VLBW test set, due to both the unpredictability of premature birth and to the ethical requirement of not perturbing the mother at this stressful moment, we did not extend this initial study further.

The study group consisted of:

- a test set of 8 inborn very-low-birth-weight (VLBW) neonates. Inclusion criteria were a gestational age (GA) <32 weeks and/or a birth weight <1500 g. The gestational age was between 6 and 14 weeks premature. Exclusion criteria were: perinatal asphyxia or major foetal pathology (abnormal karyotype, malformation, foetal pathology revealed during pregnancy);
- a control set of 8 inborn normo-ponderal full term (FT) neonates. Inclusion criteria for the control group were: a GA >37 weeks, and an uneventful pregnancy and delivery. Exclusion criteria for the control group were: perinatal asphyxia, major foetal pathology, bacterial or viral infection, or maternal arterial blood pressure >90 mm Hg during pregnancy;
- the 16 mothers of the VLBW and FT infants.

Table 1 gives the clinical parameters for the 16 neonates and their mothers.

Written, informed consent was obtained from each mother a few hours before delivery, according to a protocol approved by the local medical ethical committee (Comité de Protection des Personnes dans la recherche biomédicale (CPP) des Pays de la Loire).

The study was registered (ClinicalTrials.gov Identifier: NCT00607061), and performed in the Department of Obstetrics of the Hospital Mere-et-Enfant at the University of Nantes, Nantes. We confirm that our ethics committee specifically approved this study.

Sample collection and preparation

Samples of arterial and venous umbilical cord blood were obtained immediately after birth. The sampling only used umbilical cord blood and did not involve any blood loss for the neonates. Maternal venous blood was collected at delivery for each mother-neonate pair included in order to obtain materno-infant pairs for comparison between the preterm delivery (VLBW) and the control (FT) groups. Samples were collected in chilled 5-mL EDTA-coated tubes. The plasma was separated immediately by centrifugation (5000 g, 10 min, 4°C) and stored at –20°C until required for NMR analysis.

¹H NMR spectroscopy measurement of maternal and umbilical arterial and venous plasma

Samples were prepared from a plasma volume of 150 µL and 450 µL of a mixture of H₂O/D₂O (70/30% volume) in a 5 mm NMR tube.

Table 1. Selected clinical characteristics of enrolled infants and their mothers.

	Group		p [†]
	Preterm VLBW subjects	FT subjects	
	(n = 8)	(n = 8)	
Sex			
Male, n	3 (37%)	3 (37%)	
Female, n	5 (63%)	5 (63%)	
Birth weight, g	1180 [940–1351]	3320 [3098–3429]	<0.001
Gestational age, wk	28.9 [27.4–30.0]	40.2 [39.6–41.0]	<0.001
Birth weight, z score			
pH in umbilical cord blood	7.3 [7.2–7.4]	7.3 [7.2–7.4]	
Mode of delivery			
Vaginal, n	3 (37%)	8 (100%)	
Caesarean section, n	5 (63%)	0 (0%)	
Preeclampsia, n	3 (37%)	0 (0%)	
Apgar score at 5 min	10 [8–10]	10 [10–10]	0.06
Infant haemoglobin g/dl	15.5 [14.3–17.5]	17.5 [14.7–18.1]	0.88
Maternal age, y	31.7 [27.7–36.1]	28.8 [27.1–32.1]	0.34
Maternal haemoglobin g/dl	11.6 [10.7–12.1]	12.7 [12.2–13.0]	0.02
Maternal hypertension	5 (63%)	0 (0%)	

Data are reported as n (%) or median [interquartile 25–75].

[†]Inter-group comparison by Mann-Whitney U test.

doi:10.1371/journal.pone.0029947.t001

High-resolution NMR spectra of all blood plasma were recorded at 303 K on a Bruker Avance DRX-500 spectrometer (Bruker, Karlsruhe, Germany), operating at 500.13 MHz for proton and equipped with a cryogenic probe. Standard methods for the acquisition of plasma NMR spectra were used [20]. 1D ¹H NMR spectra were acquired using the NOESYPR1D (1D Nuclear Overhauser effect spectroscopy with water pre-saturation) pulse sequence (RD-90°-t₁-90°-t_m-90°-acquire) with a relaxation delay (RD) of 2 s, a mixing time (t_m) of 150 ms and a fixed t₁ delay of 20 μs. Water suppression was achieved by pre-saturation during the relaxation delay and mixing time. Each spectrum consisted of 128 free induction decays (FIDs) collected into 32K complex data points with a spectral width of 8012.8 Hz and an acquisition time of 2 s.

1D relaxation-edited ¹H NMR spectra were acquired using the water suppressed Carr-Purcell-Meiboom-Gill (CPMG) spin echo pulse sequence (RD-90°-τ-180°-τ_n-acquire) with a relaxation delay of 2 s and a total spin-spin relaxation time (2_n τ) of 200 ms in order to attenuate broad signals from proteins and lipoproteins. 256 FIDs were collected into 32K complex data points.

Prior to Fourier transformation, the FIDs were zero-filled to 64K points and multiplied by an exponential line-broadening function of 0.3 Hz. The 1D spectra were manually phased, baseline corrected, and the chemical shifts referenced internally to the α-glucose signal at δ 5.234 ppm, using Topspin™ software (Bruker, Karlsruhe, Germany).

Data processing and chemometric analyses

Each ¹H NMR spectrum of NOESYPR1D and CPMG sequences over the range (δ 0.7–8.5 ppm) was reduced to 70 and 92 segments, respectively. Using AMIX™ software (version 3.8.4, Bruker, Karlsruhe, Germany), segments were defined manually so as each to contain a single metabolite. Segments

thus defined covered 99.5% of the spectrum. Signal intensity in each segment was integrated using AMIX software. Data was normalized in AMIX by dividing each integrated segment by the total area of the spectrum to reduce any significant concentration difference. Output data in ASCII data format was imported to Excel 2003 (Microsoft Corporation, Redmond WA, USA), mean centred and then exported to SIMCA-P+ (version 12.0, Umetrics, Umeå, Sweden) for statistical analyses.

Statistical analysis of ¹H NMR spectroscopic data

For each set of spectra (NOESYPR1D and CPMG), a data matrix was built, where each row corresponds to a sample, each column to a chemical shift and each value in the data table to the sum of the intensities of an NMR segment. The water region (δ 4.5–5.0 ppm) and the segments containing EDTA-related signals (δ 2.53–2.58, 3.1–3.3, 3.6–3.7 ppm) were excluded. Chemometric analysis was performed using SIMCA-P+. Initial data analyses were conducted using the unsupervised method of Principal Component Analysis (PCA). The NMR variables responsible for the differences between sample scores in the score plot can be detected in the corresponding loading plot [21]. In addition, a supervised method, Partial Least Squares Discriminant Analysis (PLS-DA), was applied to maximize the discrimination between sample groups focusing on differences according to preterm subject metabolic variations [22].

The quality of the PLS-DA models obtained was evaluated by three parameters: R²(X), corresponding to the proportion of the total variance of the dependant variables that is explained by the model, R²(Y), defining the proportion of the total variance of the response variable (i.e. the class of the samples) explained by the model, and the predictive ability parameter Q²(Y), which is similar to R²(Y) except that it is computed by cross-validation. In addition, a permutation test (n = 20) was carried out to validate and to test

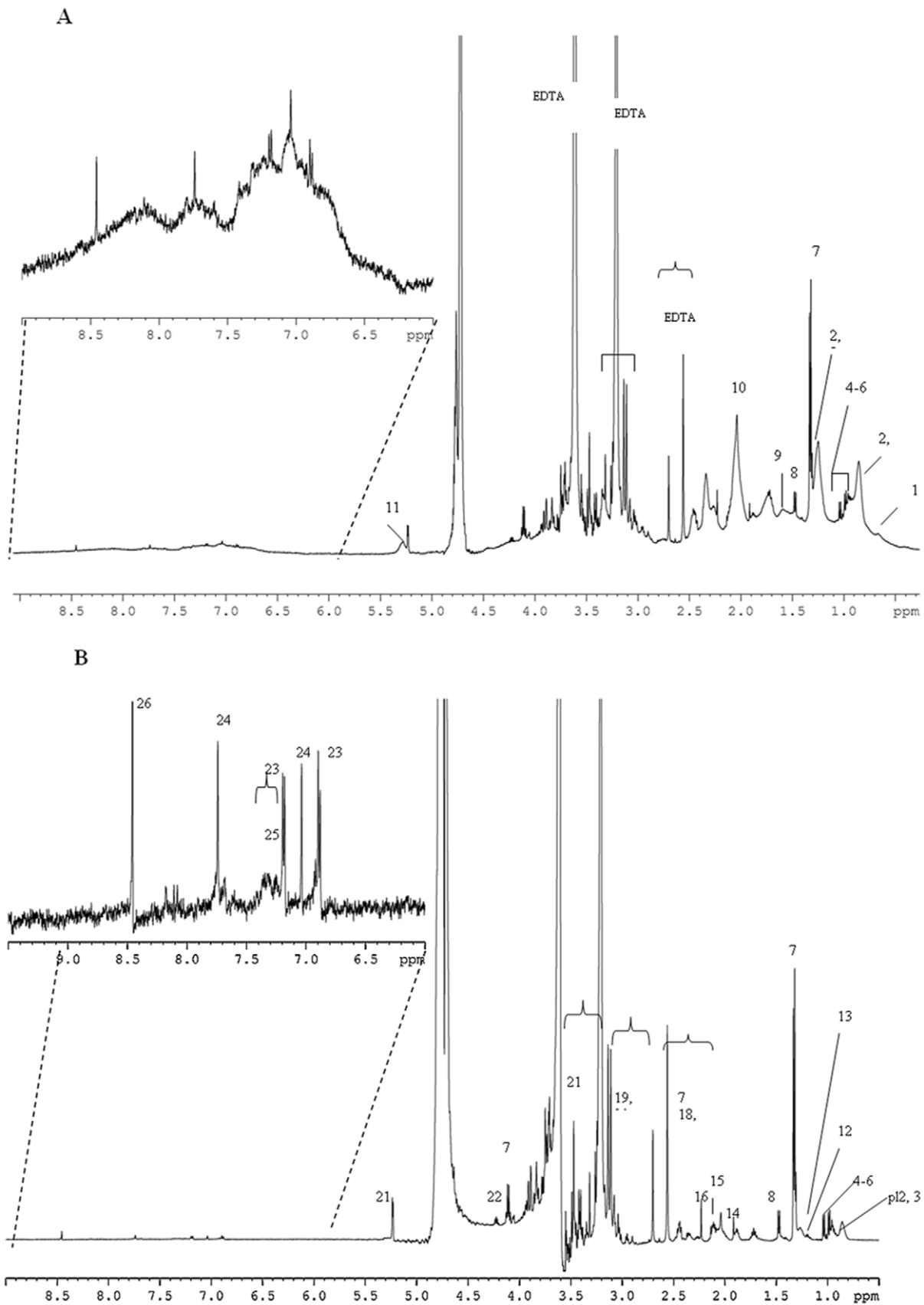


Figure 1. 500 MHz ¹H NMR spectra of arterial umbilical cord plasma from a VLBW delivery. (A) standard NOESYPR1D spectrum; (B) 1D relaxation-edited (CPMG) spectrum. Assignment: 1, HDL; 2, LDL; 3, VLDL; 4, valine; 5, leucine; 6, isoleucine; 7, lactate; 8, alanine; 9, lipid; 10, *N*-acetyl glycoprotein; 11, unsaturated lipid; 12, β -hydroxybutyrate; 13, lipid; 14, acetate; 15, glutamine; 16, acetone; 17, pyruvate; 18, succinate; 19, albumin-lysyl; 20, creatinine; 21, glucose; 22, threonine; 23, tyrosine; 24, methylhistidine; 25, phenylalanine; 26, formate. doi:10.1371/journal.pone.0029947.g001

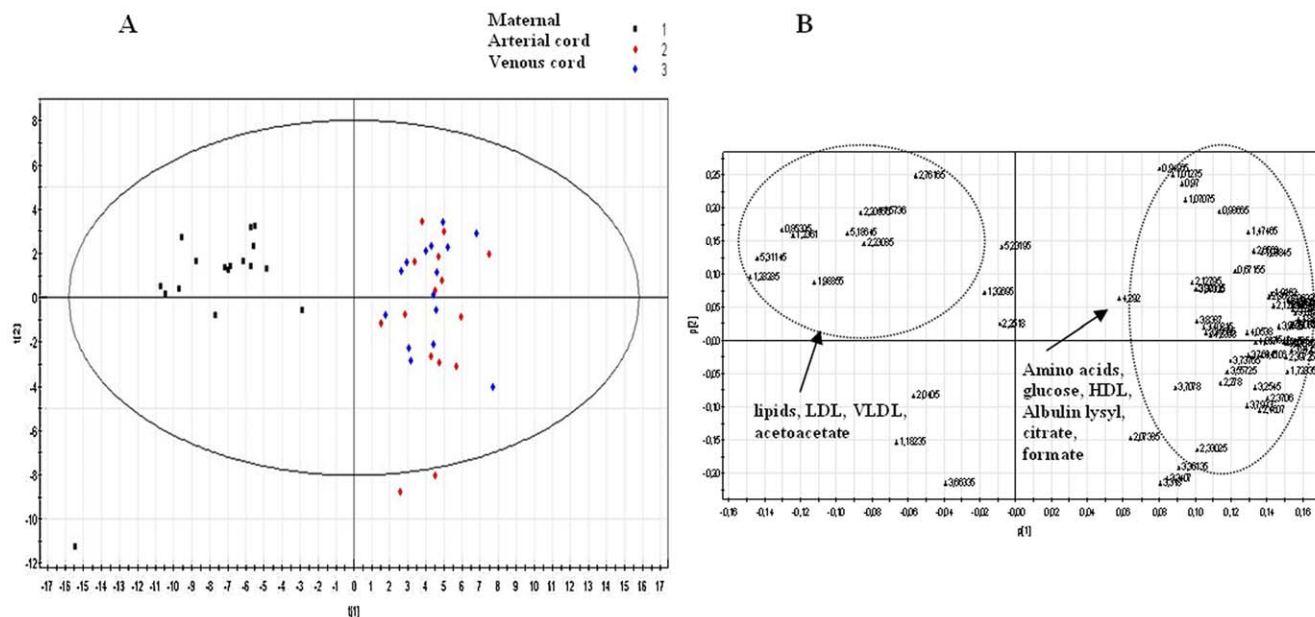


Figure 2. Multivariate analyses resulting from the 48 standard 1D spectra of maternal and both venous and arterial cord plasma from FT and VLBW deliveries. (A): PCA scores plot. (B): PCA loadings plot. The maternal plasma and both venous and arterial cord plasma are clearly distinguished on the first component which accounts for 54% of the total variance. The second component, which account for 14% of the total variance is related to inter-individual differences. doi:10.1371/journal.pone.0029947.g002

the degree of over fitting for PLS-DA model. The correlation coefficient between the original Y and the permuted Y is plotted against the cumulative R² and Q² and a regression line is calculated with the R²- and Q²-intercept limits. The model was successfully validated when R²(Y) and Q²(Y) > 0.6 and observed intercept values of R²(Y) and Q²(Y) < R²(Y) and Q²(Y), respectively. The score values from PLS-DA were subjected to ANOVA to test the PLS-DA model and the validation was considered successful with p < 0.05.

The variables which discriminate most significantly the metabolic signatures were pinpointed by their loadings on PLS-DA. The significance of the differences was further assessed by comparing the area normalized intensity of metabolite signals between the preterm and full-term plasma samples with the non parametric Mann Whitney U test. The critical p value was set at 0.05.

Results

Feasibility of ¹H NMR spectroscopy for the analysis of arterial and venous umbilical cord plasma and maternal plasma

Ethical constraints limit both the number of samples and the volume of blood that can be used for studies in new-born infants. However, samples of umbilical venous and umbilical arterial blood taken at parturition represent the placental supply to the foetus, and foetal arterial blood, respectively. Although it is difficult to obtain more than 150 µL of placental arterial blood plasma, this volume proved sufficient to obtain ¹H NMR NOESYPR1D and CPMG spectra of arterial umbilical cord plasma in VLBW infants, as illustrated in **Figure 1A and 1B**. Similarly, spectra were also obtained from 150 µL samples of arterial umbilical cord plasma collected from FT infants at birth and from maternal venous plasma and venous umbilical cord plasma, both for FT and VLBW deliveries (spectra not shown). Such small volumes of untreated plasma samples (150 µL) proved sufficient for the

detection and estimation of a wide range of metabolites in FT and VLBW infant plasmas.

Metabolite profiles of arterial and venous umbilical cord plasma and maternal plasma obtained by ¹H NMR spectroscopy

Based on the literature [23,24], twenty six metabolites were identified from the two spectral types acquired, NOESYPR1D (**Figure 1A**) and CPMG (**Figure 1B**). As typically observed, the NOESYPR1D spectrum is dominated by the broad resonances of lipoproteins and other plasma proteins, which mask the signals from low-molecular-weight metabolites. In contrast, by employing the CPMG pulse sequence to attenuate or even eliminate resonances from macromolecules (or bound small molecules) with shorter relaxation times [23,25], the spectrum acquired (**Figure 1B**), gives a clear representation of the low-molecular-weight metabolites present, especially in the low-frequency (δ 0–3 ppm) and high-frequency (δ 6–10 ppm) regions of the spectrum. The metabolites identified in **Figure 1** cover a typical range of low molecular weight compounds found in plasma, including amino acids, glycolysis metabolites, ketone bodies, and higher molecular mass metabolites including lipoproteins, unsaturated lipids, glycoproteins, and albumin-lysyl, as indicated by the signals corresponding to the N-acetyl groups and lysyl groups, respectively.

Venous umbilical cord plasma (450 µL) and maternal plasma taken at FT delivery have previously been examined by ¹H NMR spectrometry and some of these metabolites identified [19]. In this earlier study, the Hahn spin echo sequence was used, which did not allow signals in the aromatic region to be detected. Nevertheless, metabolites such as β-hydroxybutyrate, valine, alanine, glutamine and the N-acetyl groups of glycoproteins from plasma proteins were identified [19]. Arterial umbilical cord blood plasma, which represents blood supply from the foetus, was not examined by these authors. In fact, it is relatively difficult to obtain a sufficiently large sample of arterial cord blood for ¹H NMR

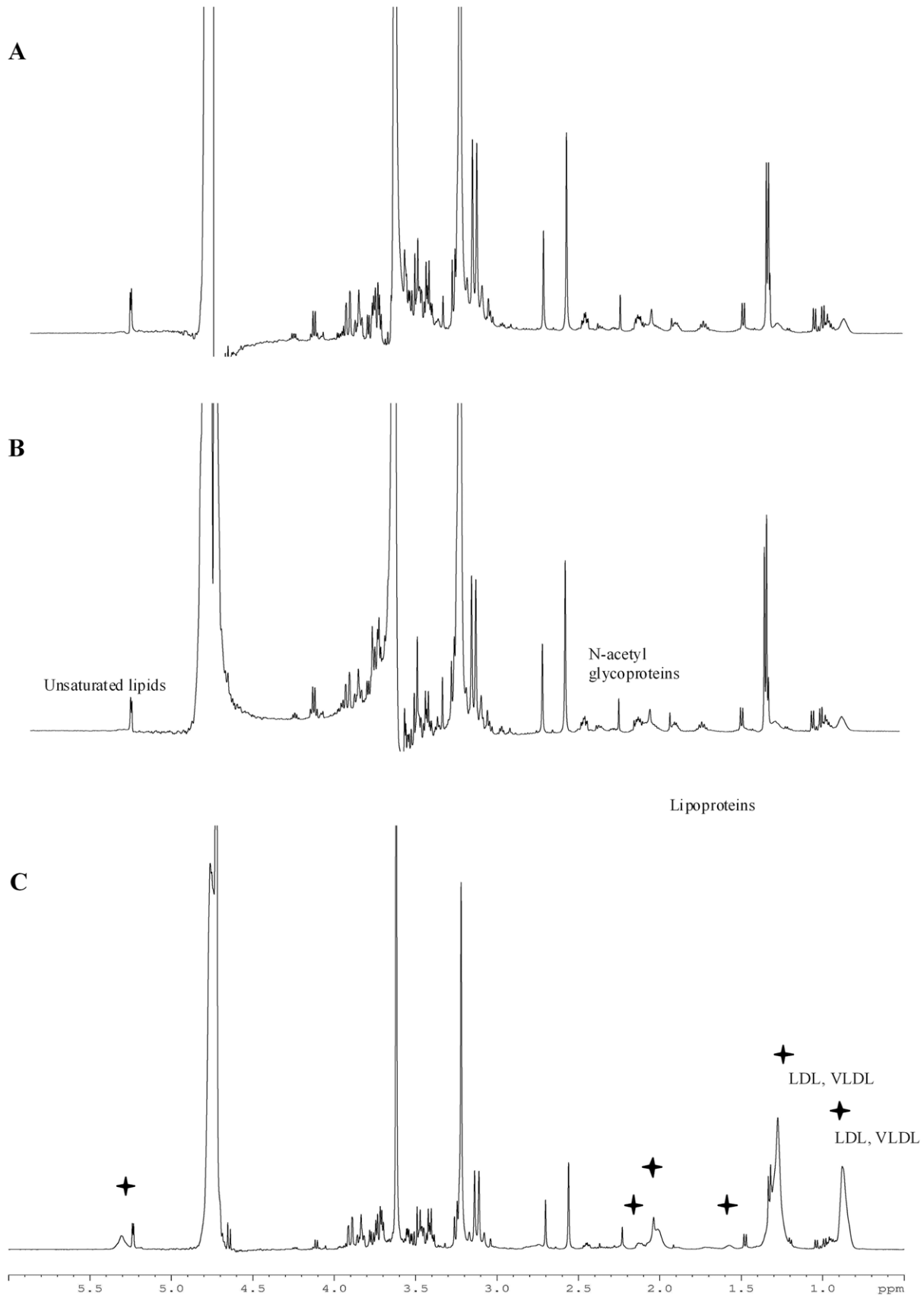


Figure 3. 500 MHz ¹H NMR CPMG spectra of blood plasma samples from VLBW deliveries. (A) Arterial cord blood, (B) Venous cord blood (C) Maternal blood. The same spectral profile was obtained for arterial and venous blood plasma, whereas the spectrum of maternal blood plasma was different. The differences are marked by +. doi:10.1371/journal.pone.0029947.g003

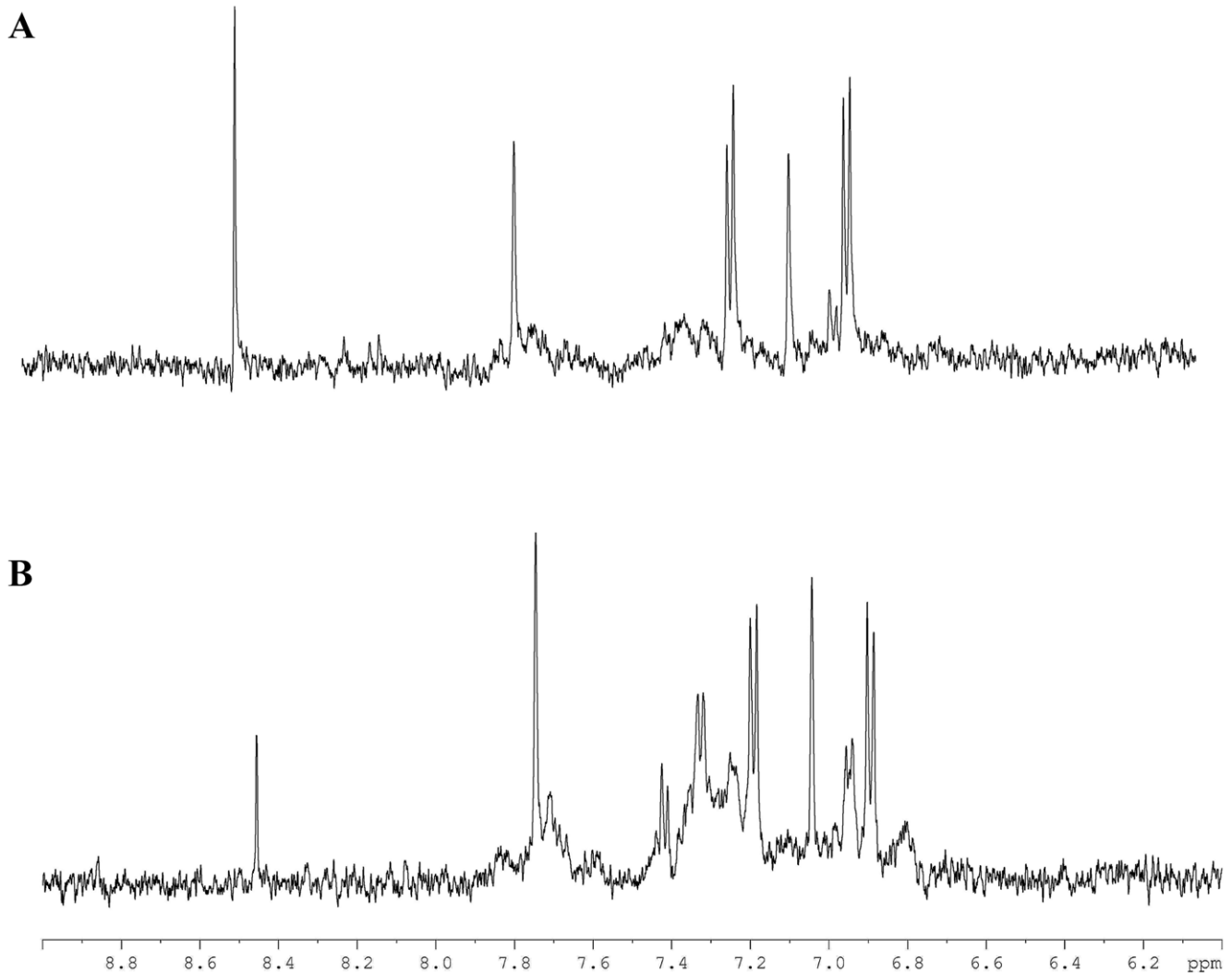


Figure 4. 500 MHz ¹H NMR CPMG spectra for the aromatic region of blood plasma samples from a VLBW delivery. (A) Arterial cord blood, (B) Maternal blood. The maternal plasma shows signals at 6.80, 6.93, 7.23 and 7.68 ppm that are absent from the preterm plasma. doi:10.1371/journal.pone.0029947.g004

spectroscopy. In the present study, we worked with a sample size of only 150 μ L and showed that it is possible therein to identify simultaneously 26 metabolites (**Figure 1A and 1B**). Thus, three plasmas obtained from three different sites –arterial and venous umbilical cord blood and maternal venous blood –can be studied under comparable conditions, indicating that ¹H NMR spectrometry may be an exploitable tool in neonatal research.

Discussion

Clear-cut differences are observed between umbilical arterial, umbilical venous and maternal plasma by PCA

Plasma samples collected at the three different sites for VLBW preterm and FT deliveries were assessed using PCA analysis to determine the most important sources of variability between the samples collected from the three different blood origins. The scores scatter plot resulting from applying PCA to the NOESYPR1D spectra (water and EDTA signals excluded) is shown in **Figure 2A**. Regardless of gestational age, a clear separation between maternal and venous/arterial umbilical cord plasma was observed along principal component 1 (PC1 54%). **Figure 2B** represents the loading plot corresponding to the first two PCs of the PCA model.

The metabolic variations based on the PCs loading orientations showed higher levels of amino acids, glucose, HDL, albumin-lysyl and lower levels of lipids, LDL, VLDL, *N*-acetyl groups of glycoproteins, acetoacetate, and β -hydroxybutyrate in both arterial and venous umbilical cord plasma compared with maternal plasma.

Figure 3 illustrates ¹H NMR metabolomic spectra of umbilical arterial (**Figure 3A**), umbilical venous (**Figure 3B**) and maternal (**Figure 3C**) plasma from a mother-neonate pair delivery at preterm (VLBW). As inferred from **Figure 2A**, there was no noticeable difference between spectra from arterial and venous umbilical cord plasma. In contrast, the spectrum of the maternal plasma is dominated by a broad envelope of protein and lipid resonances, virtually absent in the umbilical plasma samples. Signals are assigned to LDL, VLDL, lipoproteins, *N*-acetyl groups of glycoproteins and unsaturated lipids. Additionally, the aromatic region of the maternal plasma spectrum (δ 6–9 ppm) also shows marked differences from both the arterial and venous umbilical cord plasmas (**Figure 4A**), with an increase of signals at 6.80, 6.93, 7.23, 7.68 ppm (**Figure 4B**). These signals are probably due to the presence of macromolecules, such as lipids and/or proteins.

These results confirmed those found in previous studies by classical techniques, where an elevation of plasma lipids was

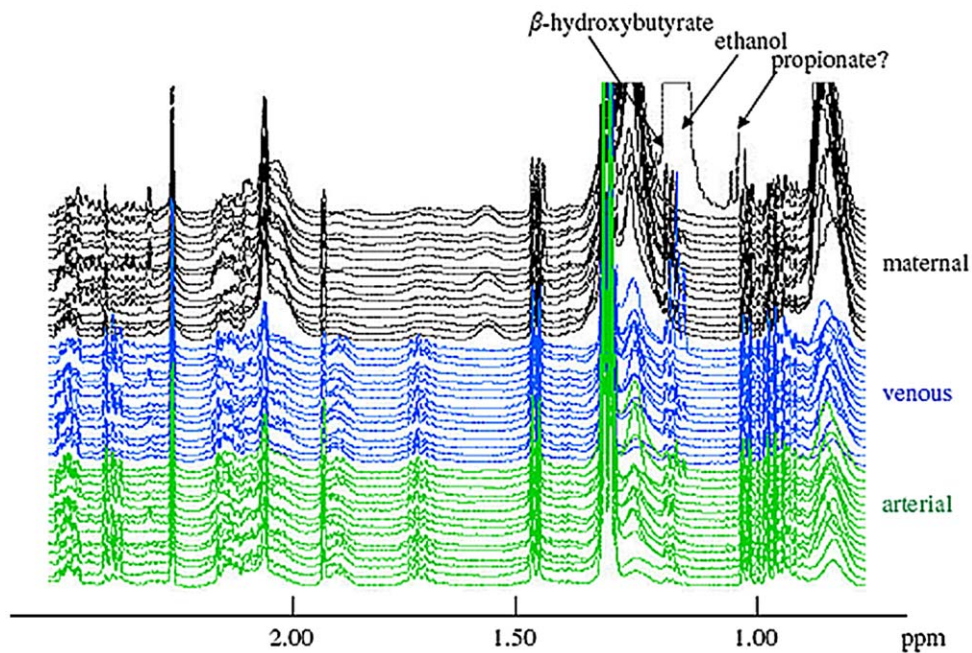


Figure 5. 500 MHz ¹H NMR CPMG spectra of maternal, cord venous and cord arterial plasma. Note the presence of traces ethanol in most spectra and high ethanol and possibly propionate (1.05 ppm) in one unusual maternal profile (the top one). This figure also shows the differences in lipids between maternal and cord plasma (higher levels of lipid signals at 0.90, 1.23, 1.72 and 2.00 ppm) and in lysine levels (signals at 1.71 and 1.90 ppm higher in maternal plasma).
doi:10.1371/journal.pone.0029947.g005

reported in the plasma of women during uncomplicated pregnancy, with an increase in triglyceride, total cholesterol, VLDL, HDL and LDL levels [26–28], along with lipid levels in foetal umbilical cord and neonatal plasma below those reported in adults [29,30], meeting maternal [31] and developing foetal [32] energy requirements in late gestation.

Amino acid concentrations have been known to be significantly higher in foetal than in maternal blood, considered to reflect the presence of active transport systems within the placenta [1]. The placenta also has the capacity for utilization, production, and interconversion of amino acids, all of which can profoundly affect the quantity of an amino acid delivered into the foetal circulation.

Among the 16 analysed maternal plasmas, one sample displayed an unexpected biochemical profile, showing the most negative scores (outlier at the bottom left of the score plot **Figure 2A**). When this spectrum was scrutinised, triplet and quadruplet resonances at 1.18 and 3.65 ppm, for the methyl and methylene groups of ethanol were unexpectedly detected (**Figure 5**) accompanied by another triplet at 1.05 ppm which was unique to this ¹H NMR spectrum (possibly the methyl group of propionate). Contamination during handling was ruled out as a potential source of ethanol. This atypical biochemical profile also showed a disturbed lipid composition and a depletion of amino acids in the maternal plasma. Intriguingly, however, neither an enhanced level of ethanol nor any other evident change was seen in the arterial and venous umbilical cord plasma from this mother–infant pair. The same preservation in cord plasma amino acid concentrations was observed in the plasma from rat pups born from dams that had a severe diet-induced depletion of total plasmatic amino acids [33]. This finding is consistent with the previous study of venous umbilical cord plasma by ¹H NMR, wherein ethanol was identified in 5 venous umbilical cord plasma samples, suggesting ethanol to be endogenous. In fact, a majority of the ¹H NMR spectra from both maternal and cord blood

showed traces of ethanol (**Figure 5**). Endogenous ethanol is known to be produced in small quantity in mammalian tissue [34] via the reduction of acetaldehyde, itself derived from the decarboxylation of pyruvate [35]. This finding is consistent with the hypothesis that endogenous ethanol is produced as an intermediate step for the elimination of excess energy-releasing substrates from mitochondria [36,37] as by the human body during intense physical effort.

Effect of preterm delivery on maternal plasma metabolomics

Analysis by PCA of the ¹H CPMG NMR spectra of plasma collected from mothers delivering either FT or VLBW infants reveals differences between the two groups (**Figure 6A**). The metabolites responsible for these differences were assessed with the loading plot from PCA (data not shown) and by univariate statistical tests of each metabolite (**Table 2**). Compared with mothers delivering at FT, mothers delivering VLBW infants had significantly higher levels of lipids, pyruvate, glutamine, valine and threonine, and significantly lower levels of acetate and isoleucine. Although not statistically significant ($p=0.08$), there was an increase in the *N*-acetyl signals from the glycoproteins in the blood of preterm mothers (**Table 2**). These signals arising from acute phase glycoproteins [38] are known to reflect inflammatory status [39,40].

Effect of gestational age on venous umbilical cord plasma of FT and VLBW infants

No significant overall differences between venous umbilical cord plasma collected from mothers delivering at term or prematurely were revealed by PLS-DA of the ¹H CPMG or NOESYPR1D NMR spectra. However, univariate statistical testing indicated some biomarkers to differ significantly. As shown in **Table 2**, significant decreases in levels of lipids, HDL, VLDL, LDL, pyruvate, glucose, acetone, albumin-lysyl, and significant increases in levels of formate

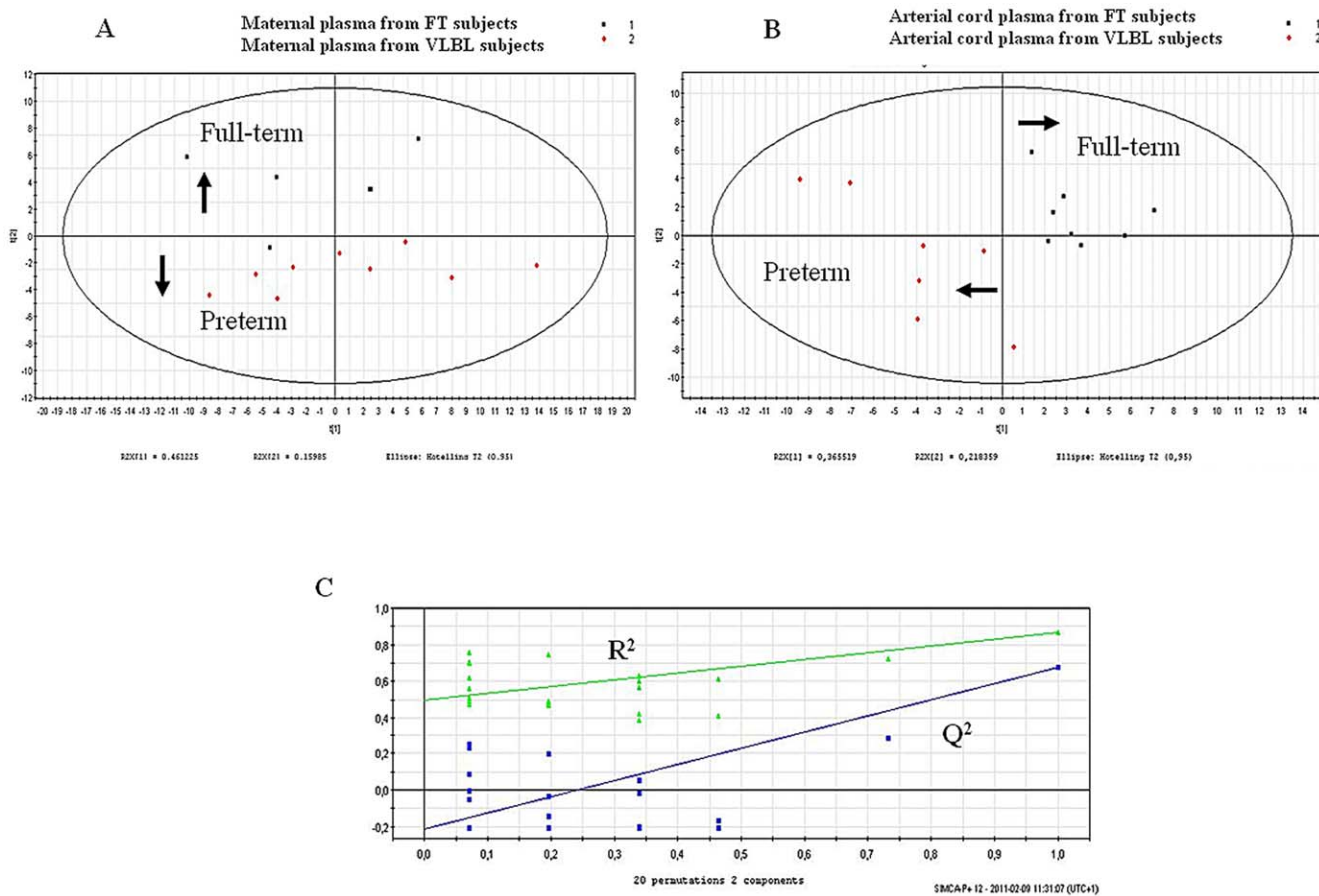


Figure 6. Multivariate analyses resulting from the standard 1D 500 MHz ¹H NMR spectra from FT and VLBW preterm deliveries. (A): PCA scores plot resulting from the analysis of maternal plasma. (B): PLS-DA scores plot resulting from the analysis of arterial umbilical cord plasma and validation by permutation test (C). (C): $R^2(X) = 0.366$, $R^2(Y) = 0.695$ and $Q^2(\text{Cum}) = 0.676$. The model has been validated by a permutation test ($n = 20$). R^2 intercept is at 0.495 and Q^2 intercept is at -0.212 . doi:10.1371/journal.pone.0029947.g006

and glutamine/glutamate were observed in venous umbilical cord plasma collected from VLBW preterm delivery. A lower level of lysyl groups of albumin is indicative of a degree of oxidative stress [41]. It has recently been suggested that normal pregnancy is associated with a level of relative hypoxia with the addition of reperfusion and oxidative stress [42], and the amounts of albumin-lysyl may reflect increased oxidative stress in the case of the VLBW materno-foetal unit, despite the prevalence of caesarean delivery. Note that more than half the VLBW group suffered from hypertension (**Table 1**). Although the levels of glucose were similar in the plasma of mothers delivering at FT and preterm (with a trend on lower levels for the latter), glucose levels were 1.5-fold lower in the venous cord plasma of VLBW compared with FT neonates, and 2-fold lower in arterial cord plasma (see next section). Interactions between maternal glucose and foetal growth are not completely understood but there may be a causal link between low maternal blood glucose and low birth weight [43].

Biochemical alterations in arterial umbilical cord plasma of FT and VLBW infants

Analysis of ¹H NOESYPR1D spectra from all arterial plasma samples by PLS-DA revealed metabolic variations related to the term of delivery (**Figure 6B**). Most metabolite levels in arterial umbilical cord plasma from preterm infants were significantly different from those in venous umbilical cord plasma (**Table 2**).

Significant decreases in the level of HDL, LDL, VLDL, pyruvate, glucose, acetone, albumin-lysyl, alanine, tyrosine, valine, isoleucine, leucine, threonine and 3-methyl-histidine were observed in arterial cord plasma from VLBW infants, accompanied by an increase in glutamine levels. Hence, it is apparent that the ¹H NMR spectra obtained made it possible to identify several biomarkers associated with VLBW infants. As for the venous cord plasma, the levels of the albumin-lysyl residues were noticeably lower in arterial umbilical cord plasma samples from preterm delivery, indicating again the presence of foetal oxidative stress. This result is in agreement with the known depletion in GSH documented in VLBW infants compared with full-term neonates [44]. Glutamine levels were elevated in both the venous and arterial cord blood plasma of VLBW neonates: the reason for this is not clear. It is noteworthy, however, that glutamine is the most abundant amino acid in blood and is involved in multiple pathways including the biosynthesis of purines and pyrimidines [45], and the supply of energy to neonatal gut [46] and to other rapidly dividing cells. Moreover, glucocorticoids, which are secreted in excess during stressful situations, have been shown to enhance both the *de novo* synthesis and the utilization of glutamine [47]. As preterm birth is associated with significant stress, we speculate that the increase of glutamine reflects a dramatic surge in glutamine biosynthesis and placental transfer in order to cover the need of the stressed preterm infant. Increased rates of glutamine production have been reported in VLBW infants [46,48], and

Table 2. Maternal and cord blood plasma metabolite differences between full-term and VLBW subjects.

Metabolite chemical shift ppm	Maternal plasma			Venous cord plasma			Arterial cord plasma			Gradient M-V		
	FT	VLBW	p [†]	FT	VLBW	p [†]	FT	VLBW	p [†]	FT	VLBW	p [†]
Lipoproteins												
HDL 0.67§	0.60	0.61	0.70	0.74	0.68	0.02*	0.74	0.66	0.05*	-0.11	-0.06	0.11
LDL 0.83	2.27	2.72	0.30	1.16	0.87	0.02*	0.98	0.67	0.04*	1.11	1.82	0.16
lipids 1.25	4.65	7.72	0.01#	1.88	1.43	0.30	1.56	1.11	0.20	2.77	5.81	0.03*
lipids 1.3	5.37	8.06	0.03*	1.96	1.46	0.35	1.56	1.23	0.42	3.41	5.97	0.06
VLDL 1.57§	1.80	1.83	0.85	1.67	1.59	0.02*	1.67	1.59	0.01#	0.12	0.22	0.56
unsaturated lipids 5.31	0.41	0.64	0.03*	0.20	0.10	0.05*	0.16	0.17	0.91	0.21	0.49	0.02*
Glycolysis pathway												
Lactate 1.32§	6.96	6.96	0.50	6.28	7.14	0.42	6.52	7.47	0.35	0.67	-0.33	0.20
Acetate 1.91	0.62	0.31	0.01#	0.43	0.51	0.16	0.70	0.58	0.56	0.19	-0.20	0.03*
Pyruvate 2.37	0.31	0.61	0.00#	0.80	0.64	0.05*	0.80	0.55	0.04*	-0.48	-0.03	0.00#
Glucose 3.7	4.46	3.67	0.21	5.81	3.52	0.01#	5.31	2.57	0.01#	-1.79	0.26	0.01#
Glucose and/or glycerol 3.87	0.89	0.90	0.77	1.01	0.98	0.56	1.01	0.90	0.02*	-0.13	-0.07	0.16
Formate 8.45	0.02	0.02	0.44	0.03	0.06	0.02*	0.07	0.08	0.64	-0.01	-0.04	0.08
Ketone bodies												
3-Hydroxybutyrate 1.20	2.87	1.06	0.12	0.91	0.57	0.11	0.60	0.42	0.06	1.96	0.41	0.35
Acetone 2.23	1.47	1.28	0.29	1.62	1.02	0.00#	1.39	0.86	0.01#	-0.15	0.20	0.30
Proteins												
N-Acetyl-glycoprotein 2.04	2.64	3.14	0.08	1.76	1.49	0.06	1.61	1.22	0.04*	0.88	1.57	0.08
Albumin-lysyl 2.9§	0.48	0.44	0.21	0.88	0.81	0.01#	0.90	0.84	0.13	-0.29	-0.25	0.56
Albumin-lysyl 3.01§	0.78	0.73	0.29	1.31	1.21	0.06	1.32	1.20	0.03*	-0.57	-0.48	0.49
creatinine 4.05§	0.53	0.59	0.03	0.77	0.74	0.42	0.79	0.68	0.03	-0.24	-0.16	0.08
Amino acids												
Non-essential												
Alanine 1.47	0.67	0.72	0.85	1.26	1.11	0.20	1.20	0.81	0.04*	-0.59	-0.38	0.11
Glutamine/glutamate 2.13§	1.10	1.33	0.01#	1.46	1.62	0.05*	1.42	1.42	0.56	-0.28	-0.25	0.73
Glutamine 2.45	0.36	0.51	0.05*	0.43	0.77	0.00#	0.43	0.67	0.03*	-0.07	-0.26	0.04*
Tyrosine 6.89§	0.21	0.20	0.15	0.36	0.35	0.35	0.37	0.33	0.01#	-0.15	-0.14	0.91
Tyrosine 7.18§	0.24	0.24	0.85	0.41	0.39	0.35	0.42	0.37	0.01#	-0.17	-0.15	0.49
Essential												
Valine 0.98	0.59	0.86	0.00#	1.11	1.27	0.25	1.03	0.95	0.35	-0.53	-0.45	0.91
Valine 1.03§	1.39	1.38	0.21	1.73	1.73	0.91	1.73	1.63	0.04*	-0.34	-0.11	1.00
Isoleucine 1.01§	1.54	1.50	0.03*	1.69	1.61	0.16	1.69	1.52	0.03*	-0.14	-0.11	0.82
Leucine 1.71§	0.18	0.20	0.44	0.37	0.39	0.49	0.39	0.31	0.11	-0.19	-0.20	0.64
Threonine 4.24§	0.39	0.44	0.04*	0.56	0.51	0.08	0.58	0.46	0.01*	-0.17	-0.08	0.06
Methylhistidine 7.74§	0.14	0.15	0.50	0.27	0.25	0.06	0.28	0.23	0.00#	-0.12	-0.09	0.04*

Values are given as area normalized peak signals mean (n=8 for each group).
 §designates spectral signals integrated from NOESY spectra, all other signals being integrated from CPMG spectra.
 †Significant differences at p<0.01 and p<0.05 are designated by # and *, respectively.
 doi:10.1371/journal.pone.0029947.t002

higher levels of glutamine were observed in the amniotic fluid of malformed fetuses [49]. Most essential and non-essential amino acids were depleted in VLBW plasma compared with FT plasma (Table 2). Placental amino acid transport can be reduced due to either impaired foetal and placental growth or to decreased transporter concentrations [1]. Decreased transporter capacity has been found in human IUGR placental vesicles [50], bearing out *in vivo* studies that indicate decreased transport in IUGR pregnancies [10,11].

Maternal-to-venous gradients for FT and VLBW infants

Univariate statistical tests were performed on the values of nutrient gradients for maternal-to-venous (M-V) umbilical cord plasma of FT and VLBW infants. Negative values of these gradients reflect a net transfer from maternal circulation to the foetus, whereas positive values mean that the transfer from the mother to the foetus may be deficient. M-V gradients differed significantly between VLBW and FT infants (Table 2). Significant increases of HDL, lipids, glucose and histidine were observed in preterm infants,

showing a weak transfer of these metabolites from the mother to the foetus. A low transfer of lipids may reflect the limited adipose storage of the foetus until the third semester of the pregnancy [51], rather than an increase of β -oxidation in foetal tissues due to a greater use of free fatty acids, as the foetus is believed to cover its energy needs solely with the oxidation of glucose.

In agreement with previous studies showing the existence of active glutamine transport from the maternal compartment to foetal blood [1,2], a decrease in the glutamine gradient was observed in both groups, indicative of the utilization of this metabolite by the placenta. Placenta is known to transaminate other amino acids such as leucine, isoleucine and valine to their respective α -ketoacids, which are released into the umbilical and uterine circulation and contribute to placental ammonia production, consistent with the high level of β -hydroxybutyrate and acetate found in maternal plasma.

Conclusions

Based on a detailed analysis of ¹H NMR spectra from maternal plasma and both venous and arterial umbilical cord blood plasma, a number of metabolites can be shown to vary depending on the term of delivery. In particular, profiles of both maternal and arterial umbilical cord plasma highlighted potential differences in materno-foetal nutrient transfer and, probably, short-term changes

associated with birth-related oxidative stress. Thus, it can be proposed that cord blood ¹H NMR spectroscopy has considerable potential as a rapid and non-invasive tool to investigate the biochemical status in preterm delivery, including in VLBW infants. The identification of a number of VLBW-related biomarkers may also aid in evaluating the pre-parturition nutritional status of the neonate and in providing guidance to the design new strategies of supplementation with specific nutrients in VLBW newborns.

Acknowledgments

We are grateful to the mothers who participated in these studies, and to the midwives at the Hôpital Mère-et-Enfant, CHU de Nantes, for their skilful help in patient care.

Author Contributions

Conceived and designed the experiments: IT GLG AK DD. Performed the experiments: IT GLG AK NG. Analyzed the data: IT GLG MCAG DD RJR. Contributed reagents/materials/analysis tools: IT GLG AK NG MCAG. Wrote the paper: IT GLG AK DD RJR. Provided and cared for study patients: AK DD. Critically reviewed the study proposal: DD RJR. Served as scientific advisors: MCAG DD RJR. Collected NMR and statistical data: IT GLG NG. Analysis and interpretation data: IT GLG.

References

- Regnault TR, Friedman JE, Wilkening RB, Anthony RV, Hay WW, Jr. (2005) Fetoplacental transport and utilization of amino acids in IUGR – A review. *Placenta* 26: Supplement A, Trophoblast Research 19: S52–S62.
- Regnault TR, De Vrijer B, Battaglia FC (2002) Transport and metabolism of amino acids in placenta. *Endocrine* 19: 23–41.
- Cleal JK, Lewis RM (2008) The mechanisms and regulation of placental amino acid transport to the human foetus. *J Neuroendocrinol* 20: 419–426.
- Battaglia FC, Regnault TR (2001) Placental transport and metabolism of amino acids. *Placenta* 22: 145–161.
- Marconi AM, Paolini CL (2008) Nutrient transport across the intrauterine growth-restricted placenta. *Semin Perinatol* 32: 178–181.
- Cetin I, Corbetta C, Piceni Sereni L, Marconi AM, Bozzetti P, et al. (1990) Umbilical amino acid concentrations in normal and growth retarded fetuses sampled in utero by cordocentesis. *Am J Obstet Gynecol* 162: 253–261.
- Galan HL, Marconi AM, Paolini CL, Cheung A, Battaglia FC (2009) The transplacental transport of essential amino acids in uncomplicated human pregnancies. *Am J Obstet Gynecol* 200: 91.e1–91.e7.
- Anderson AH, Fennessey PV, Meschia G, Wilkening RB, Battaglia FC (1997) Placental transport of threonine and its utilization in the normal and growth-restricted fetus. *Am J Physiol Endocrinol Metab* 272: E892–E900.
- Ross JC, Fennessey PV, Wilkening RB, Battaglia FC, Meschia G (1996) Placental transport and fetal utilization of leucine in a model of fetal growth retardation. *Am J Physiol Endocrinol Metab* 270: E491–E503.
- Paolini CL, Marconi AM, Ronzoni S, Di Noio M, Fennessey PV, et al. (2001) Placental transport of leucine, phenylalanine, glycine, and proline in intrauterine growth-restricted pregnancies. *J Clin Endocrinol Metab* 86: 5427–5432.
- Marconi AM, Paolini CL, Stramare L, Cetin I, Fennessey PV, et al. (1999) Steady state maternal-fetal leucine enrichments in normal and intrauterine growth-restricted pregnancies. *Pediatr Res* 46: 114–119.
- Camelo JS, Martinez FE, Gonzales AL, Monteiro JP, Jorge SM (2007) Plasma amino acids in pregnancy, placental intervillous space and preterm newborn infants. *Braz J Med Biol Res* 40: 971–977.
- Jansson T, Ekstrand Y, Bjorn C, Wennberg M, Powell TL (2002) Alterations in the activity of placental amino acid transporters in pregnancies complicated by diabetes. *Diabetes* 51: 2214–2219.
- Nelson DM, Smith SD, Furesz TC, Sadovsky Y, Ganapathy V, et al. (2003) Hypoxia reduces expression and function of system A amino acid transporters in cultured term human trophoblasts. *Am J Physiol Cell Physiol* 284: C310–C315.
- Küster A, Tea I, Ferchaud-Roucher V, Le Borgne S, Plouzennec C, et al. (2011) Cord blood glutathione depletion in preterm infants: role of maternal cysteine supply. *PLoS ONE* 6: e27626.
- Zheng S, Zhang S, Yu M, Tang J, Lu X, et al. (2011) An ¹H NMR and UPLC-MS based plasma metabolomic study to investigate the biochemical changes in chronic unpredictable mild stress model of depression. *Metabolomics* 7: 413–423.
- Trump S, Laudi S, Unruh N, Goelz R, Leibfritz D (2006) ¹H-NMR metabolic profiling of human neonatal urine. *Magn Reson Mat Phys Biol Med* 19: 305–312.
- Engelke UF, Liebrand-van Sambeek ML, De Jong JG, Leroy JG, Morava E, et al. (2004) N-acetylated metabolites in urine: proton nuclear magnetic resonance spectroscopic study on patients with inborn errors of metabolism. *Clin Chem* 50: 58–66.
- Bell JD, Brown JC, Sadler PJ, Garvie D, Macleod AF, et al. (1989) Maternal and cord blood plasma: comparative analyses by ¹H NMR spectroscopy. *NMR Biomed* 2: 61–65.
- Beckonert O, Keun HC, Ebbels TM, Bundy J, Holmes E, et al. (2007) Metabolic profiling, metabolomic and metabonomic procedures for NMR spectroscopy of urine, plasma, serum and tissue extracts. *Nat Protoc* 2: 2692–703.
- Brereton RG Multivariate pattern recognition in chemometrics, Illustrated by Case Studies, Elsevier, Amsterdam.
- Kemsley EK (1996) Discriminant analysis of high-dimensional data: A comparison of principal components analysis and partial least squares data reduction methods. *Chemom Intelligent Lab Sys* 33: 47–61.
- Nicholson JK, Foxall PJ, Spraul M, Farrant RD, Lindon JC (1995) 750 MHz ¹H and ¹H-¹³C NMR spectroscopy of human blood plasma. *Anal Chem* 67: 793–811.
- Duarte IF, Goodfellow BJ, Barros A, Jones JG, Barosa C, et al. (2007) Metabolic characterisation of plasma in juveniles with glycogen storage disease type 1a (GSD1a) by high resolution ¹H NMR spectroscopy. *NMR Biomed* 20: 401–412.
- Tang H, Wang Y, Nicholson JK, Lindon JC (2004) Use of relaxation-edited one-dimensional and two-dimensional nuclear magnetic resonance spectroscopy to improve detection of small metabolites in blood plasma. *Anal Biochem* 325: 260–272.
- Rodie VA, Caslake MJ, Stewart F, Sattar N, Ramsay JE, et al. (2004) Fetal cord plasma lipoprotein status in uncomplicated human pregnancies and in pregnancies complicated by pre-eclampsia and intrauterine growth restriction. *Atherosclerosis* 176: 181–187.
- Montelongo A, Lasuncion MA, Pallardo LF, Herrera E (1992) Longitudinal study of plasma lipoproteins and hormones during pregnancy in normal and diabetic women. *Diabetes* 41: 1651–1659.
- Sattar N, Greer IA, Loudon J, Lindsay G, McConnell, et al. (1997) Lipoprotein subfraction changes in normal pregnancy: threshold effect of plasma triglyceride on appearance of small, dense low density lipoprotein. *J Clin Endocrinol Metab* 82: 2483–2491.
- Neary RH, Kilby MD, Kumputala P, Game FL, Bhatnagar D, et al. (1995) Fetal and maternal lipoprotein metabolism in human pregnancy. *Clin Sci* 88: 311–318.
- Avena MR, Barbagallo CM, Di Paola G, Labisi M, Pinna G, et al. (1991) Lipids, lipoproteins and apolipoproteins AI, AII, B, CII, CIII and E in newborns. *Biol Neonate* 60: 187–192.
- Stock MJ, Metcalfe J (1994) Maternal physiology during gestation. In: Knobil E, Neill JD, eds. *The physiology of reproduction* New York, Raven Press. pp 947–983.
- Dugdale AE (1986) Evolution and infant feeding. *Lancet* 1: 670–673.
- Domenech M, Gruppiso PA, Nishino VT, Susa JB, Schwartz R (1986) Preserved foetal plasma amino acid concentrations in the presence of maternal hypoaaminoacidemia. *Pediatr Res* 20: 1071–1076.

34. McManus IR, Contag AO, Olson RE (1960) Characterization of endogenous ethanol in the mammal. *Science* 131: 102–103.
35. McManus IR, Contag AO, Olson RE (1966) Studies on the identification and origin of ethanol in mammalian tissues. *J Biol Chem* 241: 349–356.
36. Antoshechkin AG (2001) On intracellular formation of ethanol and its possible role in energy metabolism. *Alcohol and Alcoholism* 36: 608.
37. Antoshechkin AG (2002) Physiological model of the stimulative effects of alcohol in low-to-moderate doses. *Annals New York Acad Sci* 957: 288–291.
38. Bell JD, Brown JC, Nicholson JK, Sadler PJ (1987) Assignment of resonances for 'acute-phase' glycoproteins in high resolution proton NMR spectra of human blood plasma. *FEBS Lett* 215: 311–5.
39. Naughton DP, Haywood R, Blake DR, Edmonds S, Hawkes GE, et al. (1993) A comparative evaluation of the metabolic profiles of normal and inflammatory knee-joint synovial fluids by high resolution proton NMR spectroscopy. *FEBS Lett* 332: 221–225.
40. Torri GM, Torri J, Gulian JM, Vion-Dury J, Cozzone PJ (1999) Magnetic resonance spectroscopy of serum and acute-phase proteins revisited: a multiparametric statistical analysis of metabolite variations in inflammatory, infectious and miscellaneous diseases. *Clin Chim Acta* 279: 77–96.
41. Rodiño-Janeiro BK, González-Peteiro M, Uceda-Somoza R, González-Juanatey JR, Alvarez EM (2010) Glycated albumin, a precursor of advanced glycation end-products, up-regulates NADPH oxidase and enhances oxidative stress in human endothelial cells: molecular correlate of diabetic vasculopathy. *Diabetes Metab Res Rev* 26: 550–558.
42. Prefumo F, Gaze DC, Papageorghiou AT, Collinson PO, Thilaganathan B (2007) First trimester maternal serum ischaemia-modified albumin: a marker of hypoxia-ischaemia-driven early trophoblast development. *Hum Reprod* 22: 2029–2032.
43. Vadakekut ES, McCoy SJ, Payton ME (2011) Association of maternal hypoglycemia with low birth weight and low placental weight: a retrospective investigation. *J Am Osteopath Assoc* 111: 148–152.
44. Jain A, Mehta T, Auld PA, Rodrigues J, Ward RF, et al. (1995) Glutathione metabolism in newborns: evidence for glutathione deficiency in plasma, bronchoalveolar lavage fluid, and lymphocytes in prematures. *Pediatr Pulmonol* 20: 160–166.
45. Parimi PS, Devapatla S, Gruca LL, Amini SB, Hanson RW, et al. (2004) Effect Of Enteral Glutamine Or Glycine On Whole-Body Nitrogen Kinetics In Very-Low-Birth-Weight Infants. *Am J Clin Nutr* 79: 402–409.
46. Darmaun D, Roig JC, Auestad N, Sager BK, Neu J (1997) Glutamine metabolism in very low birth weight infants. *Pediatr Res* 41: 391–396.
47. Thibault R, Welch S, Mauras N, Sager B, Altomare A, et al. (2008) Corticosteroids increase glutamine utilization in human splanchnic bed. *Am J Physiol Gastrointest Liver Physiol* 294: G548–G553.
48. Kuhn KS, Schuhmann K, Stehle P, Darmaun D, Fürst P (1999) Determination of glutamine in muscle protein facilitates accurate assessment of proteolysis and *de novo* synthesis derived endogenous glutamine production. *Am J Clin Nutr* 70: 484–489.
49. Graça G, Duarte IF, Barros AS, Goodfellow BJ, Diaz S, et al. (2009) ¹H NMR based metabolomics of human amniotic fluid for the metabolic characterization of fetus malformations. *J Proteome Res* 8: 4144–4150.
50. Jansson T, Scholtbach V, Powell TL (1998) Placental transport of leucine and lysine is reduced in intrauterine growth restriction. *Pediatr Res* 44: 532–537.
51. Bon C, Raudrant D, Golfier F, Poloce F, Champion F, et al. (2007) Feto-maternal metabolism in human normal pregnancies: study of 73 cases. *Annal Biol Clinique* 65: 609–619.