



**HAL**  
open science

# A variational formulation for coupled degenerate elliptic equations with different signs

Anouk Nicolopoulos, Martin Campos Pinto, Bruno Després, Patrick Ciarlet

► **To cite this version:**

Anouk Nicolopoulos, Martin Campos Pinto, Bruno Després, Patrick Ciarlet. A variational formulation for coupled degenerate elliptic equations with different signs. 2019. hal-02142631v1

**HAL Id: hal-02142631**

**<https://hal.science/hal-02142631v1>**

Preprint submitted on 28 May 2019 (v1), last revised 19 Jul 2019 (v2)

**HAL** is a multi-disciplinary open access archive for the deposit and dissemination of scientific research documents, whether they are published or not. The documents may come from teaching and research institutions in France or abroad, or from public or private research centers.

L'archive ouverte pluridisciplinaire **HAL**, est destinée au dépôt et à la diffusion de documents scientifiques de niveau recherche, publiés ou non, émanant des établissements d'enseignement et de recherche français ou étrangers, des laboratoires publics ou privés.

# A variational formulation for coupled degenerate elliptic equations with different signs \*

A. Nicolopoulos<sup>‡</sup>, M. Campos Pinto<sup>‡</sup>, B. Després<sup>§</sup> and P. Ciarlet Jr.<sup>¶</sup>

May 28, 2019

## Abstract

We study a coupling of two degenerate elliptic equations in 2D with a smooth sign changing coefficient and compact terms. The degeneracy of the coefficient is critical with respect to the theory of weighted Sobolev spaces. An adapted functional framework is proposed for the description of the solution in the context of the limit absorption principle. It leads to a new well-posed mixed variational formulation. Numerical experiments illustrate the stability of our formulation.

**Keywords:** degenerate elliptic equations, weighted Sobolev, singular solutions, manufactured solutions, mixed variational formulations

## 1 Introduction

The model problem for the coupling of degenerate elliptic equations that we consider is written as

$$\begin{cases} -\operatorname{div}(\alpha\nabla u) - u &= 0 & \text{in } \Omega, \\ \alpha\partial_n u + i\lambda u &= f & \text{on } \Gamma, \end{cases} \quad (1.1)$$

where  $\lambda > 0$  is a positive scalar and  $f \in L^2(\Gamma)$  is complex valued. The degeneracy is due to the fact that  $\alpha \in C^2(\bar{\Omega})$  changes sign inside the domain  $\Omega \subset \mathbb{R}^2$ ,  $\Gamma = \partial\Omega$ , typically over a closed curve denoted as  $\Sigma$ . This problem is motivated by the modelling of resonant waves in plasmas, see Section 2, but is not covered by the theory so far. We will typically be interested in a coefficient  $\alpha$  that behaves as a signed distance to  $\Sigma$ .

However the study of degenerate elliptic equations, as in [12, 11], is usually undertaken for degeneracies that are locally integrable as well as their inverse. But this is the case only for  $(\operatorname{dist}_\Sigma)^\beta$  for  $-1 < \beta < 1$  in 2D, see [21].

A similar equation arises from the study of the interface between a non-dissipative dielectric, where the permittivity is positive, and a metamaterial, where it is negative. But the permittivity is constant on each side and does not vanish at the interface. It is shown in [5, 3, 4] that the Fredholm well-posedness of the problem depends on the contrast between the two permittivities and on the geometry of the interface. This metamaterial problem was also studied under a limiting absorption principle point of view in combination with Agmon-Douglis-Nirenberg elliptic a priori estimates in [16].

As in [6, 18], we thus resort to a limiting absorption principle to select the correct solution  $u$  of (1.1) via the regularized system

$$\begin{cases} -\operatorname{div}((\alpha + i\nu)\nabla u^\nu) - u^\nu &= 0 & \text{in } \Omega, \\ (\alpha + i\nu)\partial_n u^\nu + i\lambda u^\nu &= f & \text{on } \Gamma. \end{cases} \quad (1.2)$$

Since (1.2) is well-posed according to the Lax-Milgram theorem, the whole point is to find a way to pass to the limit as  $\nu \rightarrow 0^+$ .

In this work, we propose an original variational formulation for the limit problem  $\nu = 0^+$ . The mathematical idea is to use a domain decomposition approach, decoupling (1.1) or (1.2) into two similar equations

---

\*This work has been carried out within the framework of the EUROfusion Consortium and has received funding from the European research and training programme under grant agreement N 633053. The views and opinions expressed herein do not necessarily reflect those of the European Commission.

<sup>‡</sup>LJLL, Sorbonne Université, 4 place Jussieu, F-75005 Paris, France

<sup>‡</sup>CNRS and LJLL, Sorbonne Université, 4 place Jussieu, F-75005 Paris, France

<sup>§</sup>IUF and LJLL, Sorbonne Université, 4 place Jussieu, F-75005 Paris, France

<sup>¶</sup>POEMS, ENSTA ParisTech, 828 boulevard des Maréchaux, F-91762 Palaiseau, France

written respectively in subdomains  $\Omega_1 = \{\mathbf{x} \in \Omega, \alpha(\mathbf{x}) > 0\}$  and  $\Omega_2 = \{\mathbf{x} \in \Omega, \alpha(\mathbf{x}) < 0\}$ . The main difficulty consists in finding transmission conditions on  $\Sigma = \{\mathbf{x} \in \Omega, \alpha(\mathbf{x}) = 0\}$ : indeed, the degeneracy of the equation is such that one can not rely on  $H^1(\Omega)$  or  $H^2(\Omega)$  elliptic regularity.

Our method is based on a new characterization of the singular behaviour on  $\Sigma$  of the solution, with the design of complex logarithmic quasi-solutions. Before stating the main results of this work, we develop the type of singular solution on a simple explicit solution in dimension one. We will see that although this generic singular solution has no Dirichlet trace at the singular locus  $\Sigma$ , it remains possible to define a Neumann type trace for the flux at  $\Sigma$ . One of the issues of this paper is to incorporate this unidimensional information in a multidimensional formulation of problem (1.1) in the frame of the limit absorption principle.

## 1.1 An explicit singular solution in 1D

In 1D, for  $\alpha(x) = x$ , problem (1.1) writes

$$-(xu'(x))' - u(x) = 0, \quad \forall x \in I, \quad (1.3)$$

for an open interval  $I$  such that  $0 \in I$  and some boundary conditions. We first describe the analytical solutions to (1.3), and then introduce convenient weighted functional spaces.

One can check that  $v : x \mapsto u(x^2/2)$  verifies the Bessel equation of order 0. Solutions of (1.3) are thus spanned on each component  $I_1 = I \cap \{x > 0\}$  and  $I_2 = I \cap \{x < 0\}$  by  $J_0(2\sqrt{\cdot})$  and  $Y_0(2\sqrt{\cdot})$ , where

$$J_0 : z \in \mathbb{C} \mapsto \sum_{k \geq 0} \frac{(-1)^k}{(k!)^2} \left(\frac{z^2}{4}\right)^k \quad \text{and} \quad Y_0 : z \in \mathbb{C}^* \mapsto \frac{2}{\pi} \left( (\log \frac{z}{2} + \gamma) J_0(z) + \sum_{k \geq 1} \frac{(-1)^{k+1} H_k}{(k!)^2} \left(\frac{z^2}{4}\right)^k \right)$$

are the Bessel functions of order 0, with  $\gamma$  the Euler constant and  $H_k$  the harmonic sum of order  $k$ , see [19] for more details on these special functions. Since  $Y_0$  has a logarithmic singularity, so does a generic solution  $u$ . This singularity implies that the continuity relations between the  $I_1$  component and the  $I_2$  component, if they exist, are non trivial: a logarithm has no Dirichlet nor Neumann trace at 0. Nevertheless, a solution  $u$  to (1.3) is such that  $xu'(x)$  is continuous and has a trace at 0.

We next introduce the spaces  $H_{1/2}^1(I_j) := \{v \in L^2(I_j), \int_{I_j} |x||v'(x)|^2 dx < \infty\}$  for  $j = 1, 2$ , which come naturally when integrating (1.3) by parts. A function  $u_j \in H_{1/2}^1(I_j)$  that verifies weakly equation (1.3) on  $I_j$  is such that  $xu'_j \in H^1(I_j)$ , therefore

$$xu'_j(x)|_{x=0} = \lim_{\epsilon \rightarrow 0} \epsilon^{-1} \int_{I_j \cap \{|x| < \epsilon\}} xu'_j(x) dx.$$

Since  $\sqrt{x}u'_j \in L^2(I_j)$ , a Cauchy-Schwarz inequality and the dominated convergence theorem lead to

$$\frac{1}{\epsilon} \int_{I_j \cap \{|x| < \epsilon\}} |xu'_j(x)| dx \leq \frac{1}{\sqrt{2}} \left( \int_{I_j \cap \{|x| < \epsilon\}} |x||u'_j(x)|^2 dx \right)^{1/2} \xrightarrow{\epsilon \rightarrow 0} 0.$$

Hence such a function  $u_j$  verifies  $xu'_j(x)|_{x=0} = 0$ . Of course  $J_0|_{I_j} \in H_{1/2}^1(I_j)$ , but on the contrary  $Y_0 \notin H_{1/2}^1(I_j)$ . In fact, in terms of the scale of weighted Sobolev spaces  $(H_s^1(I))_{s > 0}$ , one can check that  $\log|\cdot|$  belongs to  $\bigcap_{\epsilon > 0} H_{1/2+\epsilon}^1(I)$  but not to  $H_{1/2}^1(I)$ . This implies among other things that the generic solution  $u$  does not belong to these spaces, that is  $u|_{I_j} \notin H_{1/2}^1(I_j)$  for  $j = 1, 2$ . It is therefore natural to introduce the scalar  $g$  at  $x = 0$  defined by

$$g = xu'(x)|_{x=0}.$$

Lifting  $g$  as  $w_g$  in  $I_1 \cup I_2$ , in such a way that  $w_g$  is defined on the domain  $I$  and verifies  $xw'_g(x)|_{x=0} = g$ , one is able to decompose the solution  $u$  to (1.3) on  $I$  in regular and singular parts: one writes  $u|_{I_j} = u_j + w_g$  on each  $I_j$ . The regular part is  $u_j \in H_{1/2}^1(I_j)$ , and the singular part is  $w_g$  which contains a logarithm and is not in  $H_{1/2}^1(I_j)$ . At the ODE level, one can also remark that for a solution such that  $u|_{I_j} = a_j J_0(2\sqrt{\cdot}) + b_j Y_0(2\sqrt{\cdot})$  for  $j = 1, 2$ , it holds

$$xu'(x)|_{x=0^+} = \frac{b_1}{2} \ell \quad \text{and} \quad xu'(x)|_{x=0^-} = \frac{b_2}{2} \ell, \quad \text{where } \ell = xY'_0(x)|_{x=0}.$$

The solution depends on the four parameters  $a_1, b_1, a_2$  and  $b_2$ . The boundary conditions and the continuity of the flux  $xu'(x)$  at 0 prescribe three degrees of freedom, and the last one will be characterized by the value of the singular coefficient  $g$ . When dealing with related resonant wave propagation problems, we note that this coefficient can be determined by the boundary conditions following a limit absorption principle as in [6, 18].

In 2D,  $\alpha(\gamma, \sigma)$  is proportional to the signed distance  $\sigma$  to  $\Sigma$ . From the above 1D study, we expect a logarithmic growth in the normal direction to the resonant curve. As a consequence, we will consider the ansatz of solutions that are combinations of piecewise  $H^1_{1/2}(\Omega_j)$ -smooth functions for  $j = 1, 2$ , and of singularities of the type  $\log|\sigma|$ , that do not belong to  $H^1_{1/2}(\Omega_j)$ . We recall that for a given bounded open set with Lipschitz boundary  $\omega \subset \mathbb{R}^2$ ,  $H^1_{1/2}(\omega)$  is the weighted Sobolev space of functions  $v \in L^2(\omega)$  such that  $\sqrt{\text{dist}_{\partial\omega}}\nabla v \in L^2(\omega)^2$ .

## 1.2 Outline and main results

We start by introducing some preliminary material in the spirit of Section 1.1. In Section 2 we detail the link between the cold plasma model and the PDE (1.1). Our main results rely on two main ideas. The first one is a specific decomposition of the unknown  $u$  into a regular part and a singular part, which is detailed in Section 3. The second one is a characterization of the singular part following a limit absorption principle, described in Section 4. The singular part  $w_g^+$  is characterized by the singular coefficient  $g$ , which is defined along  $\Sigma$ . The regular part is denoted as  $\mathbf{u} = (u_1, u_2)$  and is defined by local problems on the subdomains  $\Omega_1$  and  $\Omega_2$  that involve the singular coefficient  $g$ . We introduce an auxiliary variable  $h$  in the same space as  $g$  and a Lagrange multiplier  $\boldsymbol{\lambda}$  in the same space as  $\mathbf{u}$ . These functions are such that  $(\mathbf{u}, g, h) \in V = Q \times H^2(\Sigma) \times H^2(\Sigma)$  and  $\boldsymbol{\lambda} \in Q = H^1_{1/2}(\Omega_1) \times H^1_{1/2}(\Omega_2)$ . The validity of the decomposition of the solution relies on a technical lemma.

**Lemma 1.** *Let  $\omega \subset \mathbb{R}^2$  be a bounded open set with Lipschitz boundary. The weighted Sobolev space  $H^1_{1/2}(\omega)$  is compactly embedded into  $L^2(\omega)$ .*

Using a family of explicit quasi-solutions for the regularized problem (1.2), we implement the limit absorption principle in sections 3 and 4. This allows us to formulate and prove the following result.

**Theorem 2.** *The formal limit  $\nu = 0^+$  of problem (1.2) admits a regularized mixed variational formulation*

$$\begin{aligned} & \text{Find } (\mathbf{u}, g, h) \in V \text{ and } \boldsymbol{\lambda} \in Q \text{ such that} \\ & \begin{cases} a_r^+((\mathbf{u}, g, h), (\mathbf{v}, k, l)) - \overline{b^+((\mathbf{v}, k, l), \boldsymbol{\lambda})} = 0, & \forall (\mathbf{v}, k, l) \in V, \\ b^+((\mathbf{u}, g, h), \boldsymbol{\mu}) = \ell(\boldsymbol{\mu}), & \forall \boldsymbol{\mu} \in Q, \end{cases} \end{aligned} \quad (1.4)$$

for  $b^+$  and  $a_r^+$  defined in (4.7) and (4.10) respectively. Moreover, this formulation is well-posed, in the sense that for all  $f \in L^2(\Gamma)$ , there exists a unique solution  $(\mathbf{u}, g, h) \in V$  and  $\boldsymbol{\lambda} \in Q$ , which depends continuously on  $\|f\|_{L^2(\Gamma)}$ .

In Section 5, formulation (1.4) is discretized using a classical finite element method. It leads to a new numerical approximation method for (1.1). The numerical results illustrate on the one hand the robustness of the discretized formulation, and on the other hand the accuracy of the discrete solution. Of particular importance for the numerical experiments, we verify that the regularization parameter can take arbitrary small values, and can even be taken equal to zero.

## 1.3 Geometry and notation

We use a standard parametrization of the geometry, see [9]. The coefficient  $\alpha$  is assumed to be smooth with enough derivatives, typically  $\mathcal{C}^2$ , and non degenerate in the sense that  $\nabla\alpha(\mathbf{x}) \neq 0$  in the domain of interest. Under these conditions, we define the curve  $\Sigma := \{\mathbf{x} \in \mathbb{R}^2, \alpha(\mathbf{x}) = 0\}$ , and to further simplify, we assume that  $\Sigma$  is a closed simple line. We consider the parametrization  $\mathbf{f} : [0, 1] \rightarrow \mathbb{R}^2$  of  $\Sigma$  illustrated in Fig. 1.3, with  $\mathbf{f}(0) = \mathbf{f}(1)$  and  $\mathbf{f}$  bijective between  $[0, 1]$  and  $\Sigma$ . We assume  $\gamma$  is a curvilinear abscissa, that is  $|\mathbf{f}'(\gamma)| = 1$ . The curvature radius of  $\Sigma$  at  $\mathbf{f}(\gamma)$  is denoted  $R(\gamma)$ , and we note the minimal value of the curvature radius  $R_* := \min_{\gamma} R(\gamma) > 0$ . This quantity is well-defined for a continuous  $R$ . For a given  $\gamma \in [0, 1]$ , the ingoing normal and tangent vectors to  $\Sigma$  at  $\mathbf{f}(\gamma)$  are denoted respectively  $\mathbf{n}(\gamma)$  and  $\mathbf{t}(\gamma)$ . For all  $\gamma \in [0, 1]$  and  $\sigma \in \mathbb{R}$ , we set  $\psi(\gamma, \sigma) := \mathbf{f}(\gamma) + \sigma\mathbf{n}(\gamma)$  which belongs to a neighbourhood of  $\Sigma$  for small values of  $\sigma$ . It is known that  $\psi$  is injective on  $[0, 1] \times (-R_*, R_*)$ . We next define the tubular extension of  $\Sigma$

$$\Sigma_{\text{tub}} := \psi([0, 1] \times (-\frac{1}{2}R_*, \frac{1}{2}R_*)) \cap \Omega.$$

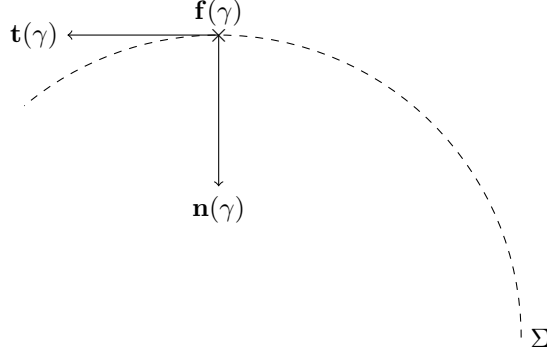


Figure 1:  $\Sigma$  parametrization

It is convenient to consider the change of variable  $\mathbf{x} = \psi(\gamma, \sigma)$  for  $\mathbf{x} \in \Sigma_{\text{tub}}$ . The Jacobian of the transformation

$$p_{\Omega}(\gamma, \sigma) := \det \nabla \psi = |\mathbf{f}'(\gamma)| - \frac{\sigma}{R(\gamma)} = 1 - \frac{\sigma}{R(\gamma)} \geq \frac{1}{2} \quad (1.5)$$

is such that for  $O \subset \Sigma_{\text{tub}}$

$$\int_O v(\mathbf{x}) d\mathbf{x} = \int_{\psi^{-1}(O)} v \circ \psi(\gamma, \sigma) p_{\Omega}(\gamma, \sigma) d\sigma d\gamma.$$

We will always use the notation  $\nabla = (\partial_x, \partial_y)^t$ , and one has

$$\nabla \gamma(\mathbf{x}) = \frac{\mathbf{t}(\gamma(\mathbf{x}))}{1 - \sigma(\mathbf{x})/R(\gamma(\mathbf{x}))} \quad \text{and} \quad \nabla \sigma(\mathbf{x}) = \mathbf{n}(\gamma(\mathbf{x})). \quad (1.6)$$

For any function  $v$  we make the abuse of notation  $v \circ \psi(\gamma, \sigma) = v(\gamma, \sigma)$ . So we define  $r(\gamma) = \partial_{\sigma} \alpha(\gamma, 0) \neq 0$ , and we have the local expansion for small  $\sigma$

$$\alpha(\gamma, \sigma) = r(\gamma)\sigma + O(\sigma^2), \quad (1.7)$$

with  $r$  of constant sign. We suppose without loss of generality that  $r < 0$ , therefore on a given  $\Sigma_{\text{tub}}^* \subset \Sigma_{\text{tub}}$ , one has  $0 < c_* \leq -\partial_{\sigma} \alpha \leq c^*$ . In the sequel, we will consider the case  $\Omega = \Sigma_{\text{tub}}^*$ . In particular,

$$0 < c_* \leq -\frac{\alpha(\gamma, \sigma)}{\sigma} \leq c^*, \quad \forall \psi(\gamma, \sigma) \in \Omega. \quad (1.8)$$

We also define

$$\Omega_1 := \psi([0, 1) \times (-\frac{1}{2}R_*, 0)) \cap \Omega \quad \text{and} \quad \Omega_2 := \psi([0, 1) \times (0, \frac{1}{2}R_*)) \cap \Omega,$$

such that  $\Omega = \Omega_1 \cup \Sigma \cup \Omega_2$ , and the exterior boundaries

$$\Gamma_1 := \partial\Omega_1 \cap \Gamma \quad \text{and} \quad \Gamma_2 := \partial\Omega_2 \cap \Gamma,$$

where  $\Gamma = \partial\Omega = \Gamma_1 \cup \Gamma_2$ . One has  $\Omega_1 = \{\alpha > 0\}$  and  $\Omega_2 = \{\alpha < 0\}$ . Finally, we define the  $L_w^2$  weighted norm on  $\Sigma$  such that

$$\|v\|_{L_w^2(\Sigma)}^2 := \int_0^1 |v(\gamma, 0)|^2 \frac{\mathbf{1}}{|r(\gamma)|} d\gamma.$$

## 1.4 Functional setting

The unknowns are complex valued, and so are the considered functional spaces. We use the  $\alpha$ -weighted Sobolev spaces defined on  $\Omega_j$ ,  $j = 1, 2$  as

$$H_{1/2}^1(\Omega_j) := \{u \in L^2(\Omega_j), \int_{\Omega_j} |\alpha(\mathbf{x})| |\nabla u(\mathbf{x})|^2 d\mathbf{x} < \infty\}$$

endowed with the  $\alpha$ -weighted norm

$$\|u\|_{H_{1/2}^1(\Omega_j)} := \left( \|u\|_{L^2(\Omega_j)}^2 + \|\sqrt{|\alpha|} \nabla u\|_{L^2(\Omega_j)}^2 \right)^{1/2}.$$

This norm is equivalent to the standard weighted  $H_{1/2}^1$  norm involving the distance to a boundary [14] according to (1.8). The dual spaces, in the sense of the spaces of anti-linear maps into  $\mathbb{C}$ , are noted with a prime.

We recall the definition of  $\mathbb{T}$ -coercivity as introduced in [5] which is an explicit realization of the inf-sup condition.

**Definition 3.** *Let  $H$  be a Hilbert space. Let  $\mathbb{T} : H \rightarrow H$  be a continuous linear operator. A bilinear form  $b$  defined on  $H \times H$  is  $\mathbb{T}$ -coercive if there exists  $C > 0$  such that  $|b(u, \mathbb{T}u)| \geq C\|u\|_H^2$ .*

If  $\mathbb{T}$  is a bijection, for all continuous linear forms  $\ell$  defined on  $H$ , there exists a unique  $u \in H$  such that  $b(u, v) = \ell(v)$  for all  $v \in H$ . And as it is the case for coercive forms, up to a compact perturbation,  $b$  is associated to a Fredholm operator of index 0. This last property implies that the associated variational formulation admits a unique solution if and only if uniqueness holds. This result will be used further.

For any  $x, y \in \mathbb{R}$ , we note the complex logarithm  $\log(x + iy) := \frac{1}{2} \log(x^2 + y^2) - i \operatorname{atan}(x/y)$ .

## 2 Modeling of plasma resonances

Our interest for equation (1.1) originated in the study of X-mode solutions of the time harmonic resonant Maxwell's equations in 2D. Resonant Maxwell's equations are used to model plasma heating in a tokamak [20, 15]. The X-mode consists of the transverse electric (TE) mode  $(E_1, E_2, 0)$ . See [8, 6] for the X-mode study in 1D, and [18] for the full  $(E_1, E_2, E_3)$  case in 1D. For  $\mathbf{E} = (E_1, E_2)$ , the system of PDEs is

$$\begin{cases} \operatorname{curl} B - \underline{\underline{\epsilon}} \mathbf{E} &= 0, \\ B - \operatorname{curl} \mathbf{E} &= 0. \end{cases} \quad (2.1)$$

The permittivity tensor for the resonant Maxwell equations writes

$$\underline{\underline{\epsilon}} = \begin{pmatrix} \alpha & i\delta \\ -i\delta & \alpha \end{pmatrix}$$

where the coefficients depend on  $\mathbf{x}$  through plasma parameters, and on the constant frequency  $\omega > 0$  of the wave sent in the plasma. Precisely,

$$\alpha(\mathbf{x}) = \left(\frac{\omega}{c}\right)^2 \left(1 - \frac{\omega_p^2(\mathbf{x})}{\omega^2 - \omega_c^2}\right) \in \mathbb{R}, \quad \delta(\mathbf{x}) = \left(\frac{\omega}{c}\right)^2 \left(\frac{\omega_c \omega_p^2(\mathbf{x})}{\omega(\omega^2 - \omega_c^2)}\right) \in \mathbb{R}.$$

Here  $\omega_p$  is the plasma pulsation. It varies in space and corresponds to the frequency of oscillations of slightly perturbed electrons as they return to equilibrium. And  $\omega_c$  is the cyclotron pulsation, the frequency to which electrons gyrate around the magnetic field. We are interested in the lower hybrid resonance, localized at  $\Sigma = \{\mathbf{x} \in \mathbb{R}^2, \omega^2 = \omega_p^2(\mathbf{x}) + \omega_c^2\} = \{\mathbf{x} \in \mathbb{R}^2, \alpha(\mathbf{x}) = 0\}$ . We concentrate on a connected component of  $\Sigma$ , which we assume to be a closed curve that separates the domain  $\Omega$  in two. On  $\Sigma$ , the off-diagonal coefficient is  $\delta = \frac{\omega \omega_c}{c^2} > 0$ . We thus consider  $\delta$  to be positive and bounded below by a non-zero constant.

The solution of problem (2.1) is expected to have a singularity of order  $1/\alpha$  on  $\Sigma$ : this singularity does not belong to  $L^2(\Omega)$ , nor to  $L^1(\Omega)$ . Conclusions drawn from the 1D case [6, 18] led us to consider the auxiliary fields  $\tilde{\mathbf{E}} := \mathbf{E} - \nabla \frac{B}{i\delta}$  and  $u := \frac{B}{i\delta}$ . The field  $\tilde{\mathbf{E}}$  is the so-called regular part of the electric field [1, Chap. 6]. From now on, we take  $\delta$  equal to a constant non zero value for simplicity. Developing the algebra, it yields  $i\delta \operatorname{curl} u + i\delta \underline{\underline{\epsilon}} \nabla u = \alpha \nabla u$ . Therefore the fields  $\tilde{\mathbf{E}}$  and  $u$  verify

$$\begin{cases} \alpha \nabla u - \underline{\underline{\epsilon}} \tilde{\mathbf{E}} &= 0, \\ i\delta u - \operatorname{curl} \tilde{\mathbf{E}} &= 0. \end{cases}$$

Reformulated on the unknown  $u$ , it gives  $\operatorname{curl}(\alpha \underline{\underline{\epsilon}}^{-1} \nabla u) - i\delta u = 0$ , where

$$\underline{\underline{\epsilon}}^{-1} = \frac{1}{\alpha^2 - \delta^2} \begin{pmatrix} \alpha & -i\delta \\ i\delta & \alpha \end{pmatrix} = -\sum_{n \geq 0} \frac{\alpha^{2n+1}}{\delta^{2n+2}} \begin{pmatrix} 1 & 0 \\ 0 & 1 \end{pmatrix} + \sum_{n \geq 0} \frac{\alpha^{2n}}{\delta^{2n+1}} \begin{pmatrix} 0 & i \\ -i & 0 \end{pmatrix}.$$

It yields the expansion

$$-\frac{1}{\delta^2} \operatorname{div}(\alpha \nabla u) - \sum_{n \geq 0} \operatorname{div} \left( \frac{\alpha^{2n+2}}{\delta^{2n+3}} \begin{pmatrix} \alpha/\delta & i \\ -i & \alpha/\delta \end{pmatrix} \nabla u \right) - u = 0.$$

We study these equations in the geometry introduced in section 1.3. Given that  $\alpha$  vanishes on  $\Sigma$ , the terms under the summation sign can be neglected as they are factor of  $\alpha^{2n+2}$  with  $n \geq 0$ . Adding mixed boundary conditions, it comes down to solving

$$\begin{cases} -\frac{1}{\delta^2} \operatorname{div}(\alpha \nabla u) - u = 0 & \text{in } \Omega, \\ \alpha \partial_n u + i\lambda u = f & \text{on } \Gamma, \end{cases}$$

which for  $\delta = 1$  is our model problem (1.1).

### 3 Limit viscosity $\nu \rightarrow 0^+$ solution

#### 3.1 Variational formulations

Because the sign of  $\alpha$  changes on  $\Sigma$ , it is natural to separate the problem on each side of  $\Sigma$ , where it has a fixed sign. For these subproblems, we show a well-posedness result in the Hilbert space

$$\begin{aligned} Q &:= H_{1/2}^1(\Omega_1) \times H_{1/2}^1(\Omega_2), \text{ equipped with the norm} \\ \|\mathbf{u}\|_Q &:= \|u_1\|_{H_{1/2}^1(\Omega_1)} + \|u_2\|_{H_{1/2}^1(\Omega_2)} \text{ for } \mathbf{u} = (u_1, u_2). \end{aligned} \quad (3.1)$$

Define the following problem

$$\begin{aligned} \text{Find } \mathbf{u} \in Q \text{ such that for all } \mathbf{v} \in Q, \\ b(\mathbf{u}, \mathbf{v}) = \ell(\mathbf{v}), \end{aligned} \quad (3.2)$$

where for  $\mathbf{u} = (u_1, u_2)$  and  $\mathbf{v} = (v_1, v_2) \in Q$ ,

$$\begin{aligned} b((u_1, u_2), (v_1, v_2)) &:= \sum_{j=1,2} \left( \int_{\Omega_j} (\alpha \nabla u_j \cdot \overline{\nabla v_j} - u_j \overline{v_j}) \, d\mathbf{x} + \int_{\Gamma_j} i\lambda u_j \overline{v_j} \, ds \right) \\ \ell(v_1, v_2) &:= \int_{\Gamma_1} f \overline{v_1} \, ds + \int_{\Gamma_2} f \overline{v_2} \, ds. \end{aligned} \quad (3.3)$$

**Proposition 4.** *Let  $\lambda > 0$  and  $f \in L^2(\Gamma)$ . Problem (3.2) has a unique solution in  $Q$ .*

Before proving Proposition 4, we prove Lemma 1 for  $\omega = \Omega_1$ .

**Lemma 5.** *The weighted Sobolev space  $H_{1/2}^1(\Omega_1)$  is compactly embedded into  $L^2(\Omega_1)$ .*

*Proof.* Let  $(u_n)_{n \in \mathbb{N}} \subset H_{1/2}^1(\Omega_1)$  be a bounded sequence. Up to a subsequence,  $u_n$  weakly converges towards a limit in  $H_{1/2}^1(\Omega_1)$ , and subtracting this limit to the sequence, one can consider  $u_n \rightharpoonup 0$ .

For all  $\epsilon > 0$ , define  $\Omega_1^\epsilon := \{(\gamma, \sigma) \in \Omega_1, |\sigma| < \epsilon\}$ . The  $H^1$  and  $H_{1/2}^1$  norms are equivalent on any set  $\Omega_1 \setminus \Omega_1^\epsilon$  since the weight  $\alpha$  is positively bounded below on this domain: so  $\|u_n\|_{L^2(\Omega_1 \setminus \Omega_1^\epsilon)} \rightarrow 0$ .

To prove our claim, we show that as  $\epsilon$  goes to 0,

$$\int_{\Omega_1^\epsilon} |u_n|^2 \, d\mathbf{x} \rightarrow 0 \quad \text{uniformly in } n.$$

Introducing the value of  $u_n$  on  $\Gamma_1$ , it yields

$$\begin{aligned} \int_{\Omega_1^\epsilon} |u_n|^2 \, d\mathbf{x} &= \int_\gamma \int_{-\epsilon}^0 |u_n(\gamma, \sigma)|^2 p_\Omega(\gamma, \sigma) \, d\sigma \, d\gamma \\ &\leq 2 \int_\gamma \int_{-\epsilon}^0 |u_n(\gamma, \sigma) - u_n(\gamma, -R)|^2 p_\Omega(\gamma, \sigma) \, d\sigma \, d\gamma + 2 \int_\gamma \int_{-\epsilon}^0 |u_n(\gamma, -R)|^2 p_\Omega(\gamma, \sigma) \, d\sigma \, d\gamma. \end{aligned}$$

The second term is uniformly controlled by  $\epsilon$  as

$$\int_\gamma \int_{-\epsilon}^0 |u_n(\gamma, -R)|^2 p_\Omega(\gamma, \sigma) \, d\sigma \, d\gamma \leq C\epsilon \|u_n\|_{L^2(\Gamma_1)}^2 \leq \tilde{C}\epsilon.$$

For the first term, a Cauchy-Schwarz argument applied twice gives

$$\begin{aligned}
\int_{\gamma} \int_{-\epsilon}^0 |u_n(\gamma, \sigma) - u_n(\gamma, -R)|^2 p_{\Omega}(\gamma, \sigma) d\sigma d\gamma &= \int_{\gamma} \int_{-\epsilon}^0 \left| \int_{-R}^{\sigma} \partial_{\sigma} u_n(\gamma, s) ds \right|^2 p_{\Omega}(\gamma, \sigma) d\sigma d\gamma \\
&\leq \int_{\gamma} \int_{-\epsilon}^0 \left( \int_{-R}^{\sigma} |s| |\partial_{\sigma} u_n(\gamma, s)|^2 ds \right) \log \left| \frac{R}{\sigma} \right| p_{\Omega}(\gamma, \sigma) d\sigma d\gamma \\
&\leq \int_{\gamma} \left( \int_{-R}^0 |s| |\partial_{\sigma} u_n(\gamma, s)|^2 ds \right) \left( \int_{-\epsilon}^0 \log \left| \frac{R}{\sigma} \right| p_{\Omega}(\gamma, \sigma) d\sigma \right) d\gamma \\
&\leq \sup_{\gamma} \left( \int_{-\epsilon}^0 \log \left| \frac{R}{\sigma} \right| p_{\Omega}(\gamma, \sigma) d\sigma \right) \left( \int_{\gamma} \int_{-R}^0 |s| |\partial_{\sigma} u_n(\gamma, s)|^2 ds d\gamma \right).
\end{aligned}$$

The first term is such that

$$\sup_{\gamma} \int_{-\epsilon}^0 \log \left| \frac{R}{\sigma} \right| p_{\Omega}(\gamma, \sigma) d\sigma \leq C\epsilon(1 + |\log \epsilon|) \xrightarrow{\epsilon \rightarrow 0} 0,$$

and the second one verifies

$$\int_{\gamma} \int_{-R}^0 |s| |\partial_{\sigma} u_n(\gamma, s)|^2 ds d\gamma \leq C \|\alpha^{1/2} \nabla u_n\|_{L^2(\Omega_1)}^2 \leq M,$$

with  $M > 0$  a constant independent of  $n$ . The result is established.  $\square$

*Proof.* [Proposition 4] Let  $\lambda > 0$  and  $f \in L^2(\Gamma)$ .

First,  $\ell$  is a continuous antilinear form on  $Q$ . In fact, for a given constant  $C > 0$ ,

$$\begin{aligned}
\|\ell(\mathbf{v})\| &\leq \|f\|_{L^2(\Gamma)} (\|v_1\|_{L^2(\Gamma_1)} + \|v_2\|_{L^2(\Gamma_2)}) \\
&\leq C \|f\|_{L^2(\Gamma)} \|\mathbf{v}\|_Q,
\end{aligned}$$

since the  $L^2$  norm on  $\Gamma$  is controlled by the  $H^1$  norm in a neighbourhood of  $\Gamma$  in  $\Omega$ , and that  $H^1$  and  $H_{1/2}^1$  norms are equivalent away from  $\Sigma$ .

Second, the sesquilinear form  $b$  is continuous on  $Q \times Q$  since there exists a constant  $C > 0$  such that for all  $\mathbf{u}, \mathbf{v} \in Q$ ,

$$|b(\mathbf{u}, \mathbf{v})| \leq (2 + \lambda C) \|\mathbf{u}\|_Q \|\mathbf{v}\|_Q.$$

Third,  $b$  is the sum of coercive and compact forms. Denoting  $b_0$  and  $b_1$  the forms such that for  $\mathbf{u}, \mathbf{v} \in Q$ ,

$$b_0(\mathbf{u}, \mathbf{v}) := -2 \int_{\Omega_1} u_1 \overline{v_1} dx \quad \text{and} \quad b_1(\mathbf{u}, \mathbf{v}) := (u_1, v_1)_{H_{1/2}^1(\Omega_1)} - (u_2, v_2)_{H_{1/2}^1(\Omega_2)} + \sum_{j=1,2} \int_{\Gamma_j} i \lambda u_j \overline{v_j} dl,$$

one has the decomposition  $b(\mathbf{u}, \mathbf{v}) = b_0(\mathbf{u}, \mathbf{v}) + b_1(\mathbf{u}, \mathbf{v})$ . For all  $\mathbf{v} \in Q$ ,

$$\operatorname{Re} b_1(\mathbf{v}, \mathbb{T}\mathbf{v}) = \|\mathbf{v}\|_Q^2 \quad \text{for} \quad \mathbb{T} = \begin{pmatrix} 1 & 0 \\ 0 & -1 \end{pmatrix},$$

hence  $b_1$  is  $\mathbb{T}$ -coercive for the bijective operator  $\mathbb{T}$ .

The form  $b_0$ , equivalent to the  $L^2$  scalar product on  $\Omega_1$ , is a compact perturbation of  $b_1$  on  $Q$  according to Lemma 5: for a bounded sequence  $(\mathbf{v}^n)_{n \in \mathbb{N}} \subset Q$ , and up to a subsequence, its first component  $v_1^n$  converges in  $L^2(\Omega_1)$ .

Thus  $b$  is associated to a Fredholm operator of zero index. The Fredholm alternative indicates it suffices to prove injectivity, in the sense that if  $b(\mathbf{v}, \cdot) = 0$  for a given  $\mathbf{v} \in Q$ , then  $\mathbf{v} = 0$ , to have bijectivity.

Testing against  $(0, v_2)$  and taking the real part, we obtain  $\|v_2\|_{H_{1/2}^1(\Omega_2)} = 0$ . Testing against  $(v_1, 0)$

we obtain first  $\|v_1\|_{L^2(\Gamma_1)} = 0$ . For all  $\epsilon > 0$ , the function  $v_1$  also verifies the Helmholtz equation on  $\Omega_1 \setminus \Omega_1^\epsilon = \{\mathbf{x} \in \Omega_1, \operatorname{dist}_{\Sigma}(\mathbf{x}) \geq \epsilon\}$

$$-\operatorname{div}(\alpha \nabla v) - v = 0.$$

Going back to the variational formulation one finds that  $\partial_n v_1|_{\Gamma_1} = 0$ . The uniqueness continuation principle from partial Cauchy data implies that in  $\Omega_1 \setminus \Omega_1^\epsilon$  one has  $v_1 = 0$ . Letting  $\epsilon$  go to 0, the claim follows.  $\square$



Since the weak formulation (3.2) of (1.1) is restricted to  $H_{1/2}^1$  solutions, it excludes  $\log|\sigma|$  singularities as seen in Section 1.1. Thus, it will only allow us to describe the regular part. For the singular part, we will follow a limit absorption principle which relies on the regularized problem. The classical way is to introduce a complex shift  $\alpha + i\nu$  [18, 4], and then pass to the limit  $\nu \rightarrow 0^+$ . We will prove that for  $\nu = 0^+$  the limit solution decomposes into a regular part in the weighted space  $Q$  plus a complementary singular part.

The remaining part of this section is devoted to show that the problem for  $\nu > 0$  is well-posed in  $H^1(\Omega)$ , which poses no real difficulties. For any  $\nu > 0$ , problem (1.2) can be formulated in a variational way as

$$\begin{aligned} \text{Find } u \in H^1(\Omega) \text{ such that for all } v \in H^1(\Omega), \\ b^\nu(u, v) = \ell(v). \end{aligned} \quad (3.4)$$

The sesquilinear form is

$$b^\nu(u, v) = \int_{\Omega} ((\alpha + i\nu)\nabla u \cdot \overline{\nabla v} - u\overline{v}) \, d\mathbf{x} + \int_{\Gamma} i\lambda u\overline{v} \, ds, \quad (3.5)$$

and for purpose of simplicity we redefine another function  $\ell$  that coincides with (3.3) on  $H^1(\Omega)$

$$\ell(v) := \int_{\Gamma} f\overline{v} \, ds. \quad (3.6)$$

**Proposition 6.** *Let  $\nu > 0$ ,  $\lambda > 0$  and  $f \in L^2(\Gamma)$ . The weak formulation (3.4) of problem (1.2) has a unique solution  $u^\nu$  in  $H^1(\Omega)$ .*

*Proof.* The continuity of forms  $b^\nu$  and  $\ell$  are straightforward,  $\alpha$  being bounded and the  $L^2$  norm on  $\Gamma$  being controlled by the  $H^1$  norm on  $\Omega$ . Let us show  $b^\nu$  is coercive. For all  $u \in H^1(\Omega)$ ,

$$\text{Im } b^\nu(u, u) \geq \nu \|\nabla u\|_{L^2(\Omega)}^2 \quad \text{and} \quad \text{Re } b^\nu(u, u) \geq -\|\alpha\|_{L^\infty(\Omega)} \int_{\Omega} |\nabla u|^2 \, d\mathbf{x} + \|u\|_{L^2(\Omega)}^2,$$

so that for all  $C > \|\alpha\|_{L^\infty(\Omega)}/\nu$ ,  $\text{Re}((1 - iC)b^\nu(u, u)) \geq \min(1, C\nu - \|\alpha\|_{L^\infty(\Omega)})\|u\|_{H^1(\Omega)}^2$  and  $b^\nu$  is coercive. The Lax-Milgram Theorem can be applied to (3.4), which thus has a unique solution  $u^\nu$  in  $H^1(\Omega)$ .  $\square$

### 3.2 A family of quasisolutions

For any  $\nu > 0$ , we define a family of quasisolutions to problem (1.2). It is composed of functions  $w_g^\nu$  approximating the expected logarithmic singular behaviour as  $\nu \rightarrow 0$  with data  $g \in H^2(\Sigma)$ :

$$w_g^\nu(\gamma, \sigma) := \frac{g(\gamma)}{r(\gamma)} \left( \frac{\log(r(\gamma)^2\sigma^2 + \nu^2)}{2} - i \operatorname{atan}\left(\frac{r(\gamma)\sigma}{\nu}\right) \right). \quad (3.7)$$

When applying the differential operators  $(-\nabla \cdot ((\alpha + i\nu)\nabla) - \text{id})$  in  $\Omega$  and  $((\alpha + i\nu)\partial_n + i\lambda \text{id})$  on  $\Gamma$  to the family, we define the resulting quantities

$$\begin{cases} q_g^\nu & := -\nabla \cdot ((\alpha + i\nu)\nabla w_g^\nu) - w_g^\nu & \text{in } \Omega, \\ z_g^\nu & := (\alpha + i\nu)\partial_n w_g^\nu + i\lambda w_g^\nu & \text{on } \Gamma. \end{cases} \quad (3.8)$$

Developing the equation in  $\Omega$  from (3.7) and using (1.6), one has

$$\begin{aligned} q_g^\nu(\gamma, \sigma) &= -\partial_\gamma((\alpha + i\nu)\partial_\gamma w_g^\nu) |\nabla \gamma|^2 + (\alpha + i\nu)\partial_\gamma w_g^\nu (\partial_\gamma \nabla \gamma) \cdot \nabla \gamma \\ &\quad + (\alpha + i\nu)\partial_\sigma w_g^\nu (\partial_\sigma \nabla \sigma) \cdot \nabla \gamma - \partial_\sigma((\alpha + i\nu)\partial_\sigma w_g^\nu) |\nabla \sigma|^2 - w_g^\nu \\ &= \left[ \frac{-\partial_\gamma}{(1 - \sigma/R(\gamma))^2} + \frac{\sigma R'(\gamma)R(\gamma)}{(R(\gamma) - \sigma)^3} \right] \left( (\alpha + i\nu) \left( \left( g'(\gamma) - \frac{g(\gamma)r'(\gamma)}{r(\gamma)} \right) w_1^\nu + \frac{g(\gamma)}{r(\gamma)} \frac{r'(\gamma)\sigma}{r(\gamma)\sigma + i\nu} \right) \right) \\ &\quad + \left[ -\partial_\sigma + \frac{1}{R(\gamma) - \sigma} \right] \left( g(\gamma) \frac{\alpha + i\nu}{r(\gamma)\sigma + i\nu} \right) - w_g^\nu(\gamma, \sigma), \end{aligned} \quad (3.9)$$

where  $w_1^\nu(\gamma, \sigma) = r(\gamma)^{-1} \left( \frac{1}{2} \log(r(\gamma)^2\sigma^2 + \nu^2) - i \operatorname{atan}\left(\frac{r(\gamma)\sigma}{\nu}\right) \right)$ .

**Proposition 7.** Let  $\nu \in (0, 1)$  and  $g \in H^2(\Sigma)$ . The manufactured solution  $w_g^\nu$ , the right hand side  $q_g^\nu$  belong to  $L^2(\Omega)$  and the boundary term  $z_g^\nu$  belongs to  $L^2(\Gamma)$ . Moreover, the bounds are uniform with respect to  $\nu$ .

*Proof.* Let  $\nu \in (0, 1)$  and  $g \in H^2(\Sigma)$ . The manufactured solution is defined in (3.7) as a product of  $g$  which is an  $H^2$  function with respect to  $\gamma$ , of  $1/r$  which is a bounded coefficient, and of the sum of a logarithm and of a bounded term. As a consequence,  $w_g^\nu$  belongs to  $L^2(\Omega)$ , and the bound is uniform with respect to  $\nu$ .

Assumption (1.7) ensures that the fractions

$$\frac{\alpha + i\nu}{r(\gamma)\sigma + i\nu}, \quad \frac{\sigma}{r(\gamma)\sigma + i\nu}, \quad \frac{\sigma(\alpha + i\nu)}{(r(\gamma)\sigma + i\nu)^2},$$

are bounded, i.e.  $O(1)$ , for small  $\sigma$  with a constant independent of  $\nu$ . For the term

$$\partial_\sigma \left[ \frac{\alpha + i\nu}{r(\gamma)\sigma + i\nu} \right] = \frac{\partial_\sigma \alpha}{r(\gamma)\sigma + i\nu} - \frac{r(\gamma)(\alpha + i\nu)}{(r(\gamma)\sigma + i\nu)^2},$$

one finds once again that

$$\left| \frac{\partial_\sigma \alpha}{r(\gamma)\sigma + i\nu} - \frac{r(\gamma)(\alpha + i\nu)}{(r(\gamma)\sigma + i\nu)^2} \right| \leq \frac{|r(\gamma)\sigma \partial_\sigma \alpha - r(\gamma)\alpha|}{(r(\gamma)\sigma)^2} + \frac{\nu |\partial_\sigma \alpha - r(\gamma)|}{2\nu |r(\gamma)\sigma|} = O(1) \quad \text{for small } \sigma.$$

Referring to (3.9),  $q_g^\nu$  thus amounts to a sum of square integrable terms independently of the value of  $\nu$ . Finally, for  $z_g^\nu$ , since it involves the function  $w_g^\nu$  and its derivatives away from the curve  $\Sigma$ , it is indeed in  $L^2(\Gamma)$  with a bound that is uniform with respect to  $\nu$ .  $\square$

**Lemma 8.** Let  $g \in H^2(\Sigma)$ . As  $\nu \rightarrow 0^+$ , the  $L^2$  limit of the manufactured functions defined above are

$$\begin{cases} w_g^+(\gamma, \sigma) = \frac{g(\gamma)}{r(\gamma)} \left( \log |r(\gamma)\sigma| - \frac{i\pi}{2} \text{sign}(r(\gamma)\sigma) \right) & \text{in } L^2(\Omega), \\ q_g^+(\gamma, \sigma) = \left[ \frac{-\partial_\gamma}{(1 - \sigma/R(\gamma))^2} + \frac{\sigma R'(\gamma)R(\gamma)}{(R(\gamma) - \sigma)^3} \right] \\ \quad \left( \left( \frac{g'(\gamma)}{r(\gamma)} - \frac{g(\gamma)r'(\gamma)}{r^2(\gamma)} \right) \alpha (\log |r(\gamma)\sigma| - \frac{i\pi}{2} \text{sign}(r(\gamma)\sigma)) + \frac{g(\gamma)r'(\gamma)}{r(\gamma)} \sigma \frac{\alpha}{r(\gamma)\sigma} \right) & (3.10) \\ \quad + \left[ -\partial_\sigma + \frac{1}{R(\gamma) - \sigma} \right] \left( g(\gamma) \frac{\alpha}{r(\gamma)\sigma} \right) - w_g^+(\gamma, \sigma) & \text{in } L^2(\Omega), \\ z_g^+(\gamma, \sigma) = \alpha \partial_n w_g^+ + i\lambda w_g^+ & \text{in } L^2(\Gamma). \end{cases}$$

**Proposition 9.** For  $g \in H^2(\Sigma)$ , the associated manufactured solutions depend in the following way on  $g$

$\|w_g^+\|_{L^2(\Omega)} \leq C\|g\|_{L^2(\Sigma)}$ ,  $\|\alpha \nabla w_g^+\|_{L^2(\Omega)^2} \leq C\|g\|_{H^1(\Sigma)}$ ,  $\|q_g^+\|_{L^2(\Omega)} \leq C\|g\|_{H^2(\Sigma)}$ , and  $\|z_g^+\|_{L^2(\Gamma)} \leq C\|g\|_{H^1(\Sigma)}$ , for four positive constants  $C$  independent of  $g$ .

**Remark 10.** For any non trivial  $g \in H^2(\Sigma)$ , function  $w_g^+$  does not belong to  $H_{1/2}^1(\Omega)$ . On the other hand, for any smooth function  $\phi$  that vanishes on  $\Sigma$ , the term  $(|\alpha|^{1/2} \nabla w_g^+) \phi$  is square integrable. In fact, the most singular term in  $\int_\Omega |\alpha| |\nabla w_g^+|^2 \phi^2$  is

$$\int_0^1 \int_{-R}^R |\alpha| \frac{|g(\gamma)|^2}{r^2(\gamma)\sigma^2} \phi^2(\gamma, \sigma) p_\Omega(\gamma, \sigma) d\sigma d\gamma,$$

which is indeed integrable since  $\alpha(\gamma, \sigma) = r(\gamma)\sigma + O(\sigma^2)$ . Therefore  $w_g^+ \in \bigcap_{\epsilon > 0} H_{1/2+\epsilon}^1(\Omega)$ .

**Proposition 11.** Let  $g \in H^2(\Sigma)$ . The  $\alpha$ -weighted flux of  $w_g^+$  on  $\Sigma$  is equal to  $g$ , in the sense that for all  $h \in L^2(\Sigma)$ ,

$$\int_\gamma \alpha(\gamma, 0) \nabla w_g^+(\gamma, 0) \cdot \mathbf{n}(\gamma) \overline{h(\gamma)} d\gamma = \int_\gamma g(\gamma) \overline{h(\gamma)} d\gamma.$$

*Proof.* Let  $\nu > 0$ . For all  $g \in H^2(\Sigma)$ , and  $\gamma \in [0, 1]$ ,

$$(\alpha(\gamma, 0) + i\nu) \nabla w_g^\nu(\gamma, 0) \cdot \mathbf{n}(\gamma) = \frac{\alpha(\gamma, 0) + i\nu}{r(\gamma) \times 0 + i\nu} g(\gamma) |\mathbf{n}(\gamma)|^2 = g(\gamma).$$

According to Proposition 9,  $(\alpha + i\nu) \nabla w_g^\nu$  converges weakly in  $L^2(\Sigma)$  towards  $\alpha \nabla w_g^+$ , so the result is proven.  $\square$

**Remark 12.** *This last proposition is essential for the decomposition in regular and singular parts. We will introduce a singular coefficient  $g$  supported on  $\Sigma$  representing the  $\alpha$ -weighted flux over the curve  $\Sigma$  of the whole solution of (1.1). Going back to the 1D case, it corresponds to the fact  $xY'_0$  has a trace at  $x = 0$  and in this case the unknown  $g$  is reduced to the coefficient  $b$ , see subSection 1.1.*

### 3.3 Decomposition of the solution in regular and singular parts

According to the Ansatz introduced in Section 1.1, we decompose  $u$  as

$$u = \begin{cases} u_1 - w_g^+, & \text{in } \Omega_1, \\ u_2 - w_g^+, & \text{in } \Omega_2, \end{cases} \quad (3.11)$$

with the singular coefficient  $g \in H^2(\Sigma)$  yet to be characterized, and for  $j = 1, 2$ , the regular part  $u_j \in H^1_{1/2}(\Omega_j)$  such that

$$\begin{cases} -\nabla \cdot (\alpha \nabla u_j) - u_j &= q_g^+, & \text{in } \Omega_j \\ \alpha \partial_n u_j + i\lambda u_j &= f + z_g^+, & \text{on } \Gamma_j \\ \alpha \partial_n u_j &= 0, & \text{on } \Sigma. \end{cases} \quad (3.12)$$

For a fixed  $g$ , these equations rewrite in a classical variational way

$$\begin{aligned} &\text{Find } \mathbf{u} \in Q \text{ such that for all } \mathbf{v} \in Q, \\ &b(\mathbf{u}, \mathbf{v}) = \ell_g(\mathbf{v}), \end{aligned} \quad (3.13)$$

where this time the antilinear form  $\ell_g$  is defined by

$$\ell_g(v_1, v_2) := \sum_{j=1,2} \int_{\Omega_j} q_g^+ \overline{v_j} d\mathbf{x} + \int_{\Gamma_j} (f + z_g^+) \overline{v_j} ds. \quad (3.14)$$

For  $f = 0$  and  $g \in H^2(\Sigma)$ , we denote the solution  $\mathbf{u}(g) = (u_1(g), u_2(g))$ .

**Proposition 13.** *Let  $\lambda > 0$ ,  $f \in L^2(\Gamma)$  and  $g \in H^2(\Sigma)$ . There exists a unique solution  $(u_1, u_2) \in Q$  solution of the weak formulation (3.13) of (3.12). The solution is such that*

$$\|u_1\|_{H^1_{1/2}(\Omega_1)} \leq C(\|g\|_{H^2(\Sigma)} + \|f\|_{L^2(\Gamma)}) \quad \text{and} \quad \|u_2\|_{H^1_{1/2}(\Omega_2)} \leq C(\|g\|_{H^2(\Sigma)} + \|f\|_{L^2(\Gamma)}), \quad (3.15)$$

for constants  $C > 0$  that are independent of  $f$  and  $g$ .

*Proof.* Under the assumption that  $\ell_g$  is continuous, the proof of Prop. 4 shows that the problem is well-posed for any  $\lambda > 0$ ,  $f \in L^2(\Gamma)$  and  $g \in H^2(\Sigma)$ . And the continuity of  $\ell_g$  is immediate considering Prop. 9.

Testing against  $(u_1, 0)$  and  $(0, u_2)$  respectively, we obtain the bounds

$$\|u_1\|_{H^1_{1/2}(\Omega_1)} - \|u_1\|_{L^2(\Omega_1)} \leq C(\|g\|_{H^2(\Sigma)} + \|f\|_{L^2(\Gamma)}), \quad (3.16)$$

and

$$\|u_2\|_{H^1_{1/2}(\Omega_2)} \leq C(\|g\|_{H^2(\Sigma)} + \|f\|_{L^2(\Gamma)}). \quad (3.17)$$

Let us now precise the bound (3.16). We show that there exists a constant  $C > 0$  that is independent of  $f$  and  $g$  such that

$$\|u_1\|_{L^2(\Omega_1)} \leq C(\|f\|_{L^2(\Gamma_1)} + \|g\|_{H^2(\Sigma)}).$$

We proceed by contradiction as in *e.g.* [10]. Consider there exists sequences  $(f_k)_{k \in \mathbb{N}} \subset L^2(\Gamma)$ ,  $(g_k)_{k \in \mathbb{N}} \subset H^2(\Sigma)$  and  $(u_{1,k})_{k \in \mathbb{N}} \subset H^1_{1/2}(\Omega_1)$  that verify for all  $k \in \mathbb{N}$ ,

$$\begin{cases} -\nabla \cdot (\alpha \nabla u_{1,k}) - u_{1,k} &= q_{g_k}^+, & \text{in } \Omega_1 \\ \alpha \partial_n u_{1,k} + i\lambda u_{1,k} &= f_k + z_{g_k}^+, & \text{on } \Gamma_1 \\ \alpha \partial_n u_{1,k} &= 0, & \text{on } \Sigma \end{cases} \quad (3.18)$$

and such that  $\|u_{1,k}\|_{L^2(\Omega_1)} = 1$  for all  $k$  and  $\|f_k\|_{L^2(\Gamma)} + \|g_k\|_{H^2(\Sigma)} \rightarrow 0$ . Using relation (3.16), we get that  $(u_{1,k})_{k \in \mathbb{N}}$  is bounded in  $H^1_{1/2}(\Omega_1)$  norm. Therefore there exists  $u_1^* \in H^1_{1/2}(\Omega_1)$  towards which, up to

a subsequence,  $u_{1,k}$  converges weakly in  $H_{1/2}^1(\Omega_1)$  and strongly in  $L^2(\Omega_1)$  according to Lemma 5. Thus  $u_1^*$  is the weak solution of

$$\begin{cases} -\nabla \cdot (\alpha \nabla u_1) - u_1 &= 0, & \text{in } \Omega_1 \\ \alpha \partial_n u_1 + i\lambda u_1 &= 0, & \text{on } \Gamma_1 \\ \alpha \partial_n u_1 &= 0, & \text{on } \Sigma \end{cases} \quad (3.19)$$

which means  $u_1^* = 0$ . But this contradicts the fact that  $\|u_1^*\|_{L^2(\Omega_1)} = 1$ .

So the bound (3.16) can be expressed exclusively in terms of the  $H_{1/2}^1(\Omega_1)$  norm of  $u_1$  as

$$\|u_1\|_{H_{1/2}^1(\Omega_1)} \leq C(\|g\|_{H^2(\Sigma)} + \|f\|_{L^2(\Gamma)})$$

and the proof is ended.  $\square$

It is now necessary to find how to characterize the transmission condition on  $\Sigma$ , quantified by the unknown  $g$ , to close the system.

## 4 A mixed variational formulation of the limit problem

### 4.1 Energy estimates

Let  $u^\nu$  denote the solution of (1.2). We introduce the set of compactly supported, smooth and positive cutoff around  $\Sigma$  functions depending only on  $\sigma$ , and not on  $\gamma$

$$\mathcal{C}_{0,+}^1(\Omega) = \{\varphi \in \mathcal{C}_0^1(\Omega), \partial_\gamma \varphi = 0, \varphi \geq 0, \varphi|_\Sigma = 1\}. \quad (4.1)$$

Let  $\varphi \in \mathcal{C}_{0,+}^1(\Omega)$ . We introduce a new unknown  $h \in H^2(\Sigma)$ , which corresponds to a dual variable associated to the unknown  $g$ . For a given  $h$ , testing the equation verified by  $u^\nu + w_h^\nu$  against  $\overline{(u^\nu + w_h^\nu)}\varphi$  gives

$$\int_{\Omega} \left( -\nabla \cdot ((\alpha + i\nu)\nabla(u^\nu + w_h^\nu)) \overline{(u^\nu + w_h^\nu)}\varphi - |u^\nu + w_h^\nu|^2 \varphi \right) dx = \int_{\Omega} q_h^\nu \overline{(u^\nu + w_h^\nu)}\varphi dx.$$

Integrating by parts, it yields

$$\int_{\Omega} \left( (\alpha + i\nu) |\nabla(u^\nu + w_h^\nu)|^2 \varphi + (\alpha + i\nu) \overline{(u^\nu + w_h^\nu)} \nabla(u^\nu + w_h^\nu) \cdot \nabla \varphi - |u^\nu + w_h^\nu|^2 \varphi \right) dx = \int_{\Omega} q_h^\nu \overline{(u^\nu + w_h^\nu)}\varphi dx,$$

wich implies

$$\text{Im} \int_{\Omega} \left( (\alpha + i\nu) (u^\nu + w_h^\nu) \nabla \overline{(u^\nu + w_h^\nu)} \cdot \nabla \varphi + q_h^\nu \overline{(u^\nu + w_h^\nu)}\varphi \right) dx = \int_{\Omega} \nu |\nabla(u^\nu + w_h^\nu)|^2 dx \geq 0. \quad (4.2)$$

**Definition 14.** Let  $\nu > 0$ ,  $\varphi \in \mathcal{C}_{0,+}^1(\Omega)$ . For all  $u \in H^1(\Omega)$  and  $h \in H^2(\Sigma)$ , define the quadratic form

$$\mathcal{J}^\nu(u, h) = \text{Im} \int_{\Omega} \left( (\alpha + i\nu) (u + w_h^\nu) \nabla \overline{(u + w_h^\nu)} \cdot \nabla \varphi + q_h^\nu \overline{(u + w_h^\nu)}\varphi \right) dx. \quad (4.3)$$

We also define the Hilbert space

$$V := Q \times H^2(\Sigma) \times H^2(\Sigma), \text{ equipped with the norm} \quad (4.4)$$

$$\|(\mathbf{u}, g, h)\|_V := \|\mathbf{u}\|_Q + \|g\|_{H^2(\Sigma)} + \|h\|_{H^2(\Sigma)}.$$

and the limit quadratic form such that for all  $(\mathbf{u}, g, h) \in V$  with  $\mathbf{u} = (u_1, u_2)$

$$\mathcal{J}^+(\mathbf{u}, g, h) = \sum_{j=1,2} \text{Im} \int_{\Omega_j} \left( \alpha (u_j - w_{g-h}^+) \nabla \overline{(u_j - w_{g-h}^+)} \cdot \nabla \varphi + q_h^+ \overline{(u_j - w_{g-h}^+)}\varphi \right) dx. \quad (4.5)$$

For a given  $(\mathbf{u}, g, h)$ , the quantity  $\mathcal{J}^+(\mathbf{u}, g, h)$  is the formal pointwise limit of  $\mathcal{J}^\nu(u, h)$  where  $u|_{\Omega_j}$  is a regularization of  $u_j - w_g^+$  for  $j = 1, 2$ . Since relation (4.2) holds, the idea is now to minimize  $\mathcal{J}^+$  under the constraint that  $(\mathbf{u}, g)$  verifies equation (3.13). We define for this purpose the following Lagrangian on  $V \times Q$ , such that for all  $(\mathbf{u}, g, h) \in V$  and  $\mathbf{v} \in Q$

$$\mathcal{L}^+(\mathbf{u}, g, h, \mathbf{v}) = \mathcal{J}^+(\mathbf{u}, g, h) + \text{Im} (b(\mathbf{u}, \mathbf{v}) - \ell_g(\mathbf{v})). \quad (4.6)$$

## 4.2 Mixed variational formulation

To begin with, define  $b^+$  the sesquilinear form on  $V \times Q$  such that for all  $(\mathbf{u}, g, h) \in V$  and  $\mathbf{v} \in Q$ ,

$$b^+((\mathbf{u}, g, h), \mathbf{v}) = \sum_{j=1,2} \left( \int_{\Omega_j} (\alpha \nabla u_j \cdot \nabla \bar{v}_j - (u_j + q_g^+) \bar{v}_j) \, d\mathbf{x} + \int_{\Gamma_j} (i\lambda u_j - z_g^+) \bar{v}_j \, ds \right). \quad (4.7)$$

**Remark 15.** On  $V \times Q$ , it holds that  $b^+((\mathbf{u}, g, h), \mathbf{v}) = b^+((\mathbf{u}, g, 0), \mathbf{v}) = b(\mathbf{u}, \mathbf{v}) - \ell_g(\mathbf{v}) + \ell(\mathbf{v})$ .

Define  $a^+$  a sesquilinear form on  $V \times V$  that verifies  $\text{Im } a^+ = d\mathcal{J}^+$ . We choose the form defined for all  $(\mathbf{u}, g, h), (\mathbf{v}, k, l) \in V$  by

$$\begin{aligned} a^+((\mathbf{u}, g, h), (\mathbf{v}, k, l)) &= \sum_{j=1,2} \int_{\Omega_j} \left( \alpha (u_j - w_{g-h}^+) \nabla \overline{(v_j - w_{k-l}^+)} \cdot \nabla \varphi + q_h^+ \overline{(v_j - w_{k-l}^+)} \varphi \right) \, d\mathbf{x} \\ &\quad - \int_{\Omega_j} \left( \alpha \overline{(v_j - w_{k-l}^+)} \nabla (u_j - w_{g-h}^+) \cdot \nabla \varphi + \bar{q}_l^+ (u_j - w_{g-h}^+) \varphi \right) \, d\mathbf{x}. \end{aligned} \quad (4.8)$$

Note that  $a^+$  is anti-hermitian.

The Euler-Lagrange equations associated to the minimization of (4.6) have the following structure

$$\begin{cases} \text{Find } (\mathbf{u}, g, h) \in V \text{ and } \boldsymbol{\lambda} \in Q \text{ such that} \\ a^+((\mathbf{u}, g, h), (\mathbf{v}, k, l)) - \overline{b^+((\mathbf{v}, k, l), \boldsymbol{\lambda})} = 0, & \forall (\mathbf{v}, k, l) \in V, \\ b^+((\mathbf{u}, g, h), \boldsymbol{\mu}) = \ell(\boldsymbol{\mu}), & \forall \boldsymbol{\mu} \in Q. \end{cases} \quad (4.9)$$

We will see that with an arbitrary small regularization in  $g$  and  $h$  for the form  $a^+$ , this form is  $\mathbb{T}$ -coercive on  $V$ , which allows us to apply the classical results of [2] and lead to the conclusion that the regularized problem is well-posed.

For  $\rho, \mu \in \mathbb{R}^+$ , we introduce the regularized form on  $V \times V$

$$a_r^+((\mathbf{u}, g, h), (\mathbf{v}, k, l)) = a^+((\mathbf{u}, g, h), (\mathbf{v}, k, l)) + i \left( -\rho (g, k)_{H^2(\Sigma)} + \mu (h'', l'')_{L^2(\Sigma)} \right). \quad (4.10)$$

**Theorem 16.** Let  $\lambda > 0$ ,  $f \in L^2(\Gamma)$ , and  $\rho, \mu > 0$ . The regularized formulation of (4.9)

$$\begin{cases} \text{Find } (\mathbf{u}, g, h) \in V \text{ and } \boldsymbol{\lambda} \in Q \text{ such that} \\ a_r^+((\mathbf{u}, g, h), (\mathbf{v}, k, l)) - \overline{b^+((\mathbf{v}, k, l), \boldsymbol{\lambda})} = 0, & \forall (\mathbf{v}, k, l) \in V, \\ b^+((\mathbf{u}, g, h), \boldsymbol{\mu}) = \ell(\boldsymbol{\mu}), & \forall \boldsymbol{\mu} \in Q, \end{cases} \quad (4.11)$$

admits a unique solution.

**Remark 17.** Theorem 16 means that the regularization in  $\nu$  across the curve  $\Sigma$  has been replaced by a regularization in  $\rho$  and  $\mu$  along  $\Sigma$ .

## 4.3 Proof of the well-posedness

Denote  $B^+ : V \rightarrow Q'$  the linear continuous operator such that for all  $(\mathbf{v}, k, l) \in V$  and  $\boldsymbol{\mu} \in Q$ ,

$$(B^+(\mathbf{v}, k, l), \boldsymbol{\mu})_{Q', Q} = b^+((\mathbf{v}, k, l), \boldsymbol{\mu}),$$

and let  $K := \ker B^+$ . Denote  $A_{KK'}^+ : K \rightarrow K'$  the linear continuous operator such that for all  $(\mathbf{u}, g, h), (\mathbf{v}, k, l) \in K$ ,

$$(A_{KK'}^+(\mathbf{u}, g, h), (\mathbf{v}, k, l))_{K', K} = a_r^+((\mathbf{u}, g, h), (\mathbf{v}, k, l)), \quad (4.12)$$

The proof of Theorem 16 will consist in applying the following classical result.

**Theorem 18** (Theorem 4.2.2 of Boffi-Brezzi-Fortin [2] in  $\mathbb{C}$ ). For any  $\kappa \in V'$  and  $\boldsymbol{\varkappa} \in Q'$ , the mixed system

$$\begin{cases} \text{Find } (\mathbf{u}, g, h) \in V \text{ and } \boldsymbol{\lambda} \in Q \text{ such that} \\ a_r^+((\mathbf{u}, g, h), (\mathbf{v}, k, l)) - \overline{b^+((\mathbf{v}, k, l), \boldsymbol{\lambda})} = (\kappa, (\mathbf{v}, k, l))_{V', V}, & \forall (\mathbf{v}, k, l) \in V, \\ b^+((\mathbf{u}, g, h), \boldsymbol{\mu}) = (\boldsymbol{\varkappa}, \boldsymbol{\mu})_{Q', Q}, & \forall \boldsymbol{\mu} \in Q. \end{cases} \quad (4.13)$$

has a unique solution if and only if  $A_{KK'}^+$  is an isomorphism from  $K$  to  $K'$  and if  $\text{Im } B^+ = Q'$ .

**Proposition 19.** *Operator  $B^+$  is onto  $Q'$ .*

*Proof.* This is a consequence of Prop. 13. Indeed, according to (4.7),  $B^+$  is such that

$$(B^+(\mathbf{u}, g, h), \boldsymbol{\mu})_{Q', Q} = b(\mathbf{u}, \boldsymbol{\mu}) - \sum_{j=1,2} \left( \int_{\Omega_j} q_g^+ \overline{\mu_j} d\mathbf{x} + \int_{\Gamma_j} z_g^+ \overline{\mu_j} ds \right).$$

For any  $\varkappa \in Q'$ , it has been proven that for all  $g \in H^2(\Sigma)$ , there exists  $\mathbf{u} \in Q$  such that

$$b(\mathbf{u}, \boldsymbol{\mu}) = \sum_{j=1,2} \left( \int_{\Omega_j} q_g^+ \overline{\mu_j} d\mathbf{x} + \int_{\Gamma_j} z_g^+ \overline{\mu_j} ds \right) + (\varkappa, \boldsymbol{\mu})_{Q', Q} \quad \forall \boldsymbol{\mu} \in Q.$$

As a result, operator  $B^+$  is onto  $Q'$ .  $\square$

**Proposition 20.** *The kernel  $K$  of operator  $B^+$  can be described as*

$$K = \{(\mathbf{u}, g, h) \in V, \quad \mathbf{u}(g) = (u_1(g), u_2(g))\}. \quad (4.14)$$

*Proof.* As the last component in  $H^2(\Sigma)$  is a silent variable for  $B^+$ , it is not constrained. Necessarily  $(\mathbf{u}, g)$  is such that  $b(\mathbf{u}, \boldsymbol{\mu}) = \ell_g(\boldsymbol{\mu})$  for all  $\boldsymbol{\mu} \in Q$ , where the boundary term  $f \in L^2(\Gamma)$  is taken equal to 0. Referring to Prop. 13, this is verified for all  $g \in H^2(\Sigma)$  by  $\mathbf{u}(g) = (u_1(g), u_2(g))$ .  $\square$

Let us now address the properties verified by  $a^+$ .

**Proposition 21.** *For all  $(\mathbf{u}, g, h), (\mathbf{v}, k, l) \in K$ ,*

$$\begin{aligned} a^+((\mathbf{u}, g, h), (\mathbf{v}, k, l)) &= \sum_{j=1,2} \int_{\Omega_j} q_h^+ \overline{(v_j - w_{k-l}^+)} - \overline{q_l^+} (u_j - w_{g-h}^+) d\mathbf{x} \\ &\quad + \int_{\Gamma_j} z_h^+ \overline{(v_j - w_{k-l}^+)} - \overline{z_l^+} (u_j - w_{g-h}^+) - 2i\lambda (u_j - w_{g-h}^+) \overline{(v_j - w_{k-l}^+)} dl \end{aligned} \quad (4.15)$$

and  $a^+$  is independent of the cutoff  $\varphi$ , as long as  $\varphi \in \mathcal{C}_{0,+}^1(\Omega)$ , see (4.1).

*Proof.* Let  $(\mathbf{u}, g, h), (\mathbf{v}, k, l) \in K$ , with  $\mathbf{u} = (u_1, u_2) = (u_1(g), u_2(g))$  and  $\mathbf{v} = (v_1, v_2) = (u_1(k), u_2(k))$  according to Prop. 20. Remark that

$$\begin{aligned} a^+((\mathbf{u}, g, h), (\mathbf{v}, k, l)) &= \sum_{j=1,2} \int_{\Omega_j} \left( \alpha (u_j - w_{g-h}^+) \nabla \overline{(v_j - w_{k-l}^+)} \cdot \nabla (\varphi - 1) + q_h^+ \overline{(v_j - w_{k-l}^+)} (\varphi - 1) \right) d\mathbf{x} \\ &\quad - \int_{\Omega_j} \left( \alpha \overline{(v_j - w_{k-l}^+)} \nabla (u_j - w_{g-h}^+) \cdot \nabla (\varphi - 1) + \overline{q_l^+} (u_j - w_{g-h}^+) (\varphi - 1) \right) d\mathbf{x} \\ &\quad + \int_{\Omega_j} \left( q_h^+ \overline{(v_j - w_{k-l}^+)} - \overline{q_l^+} (u_j - w_{g-h}^+) \right) d\mathbf{x}. \end{aligned}$$

Since  $\varphi|_{\Sigma} = 1$  and  $\alpha |\nabla w^+|^2 = \frac{c_0(\gamma, \sigma)}{\sigma} + c_1(\gamma, \sigma)$  with  $c_0, c_1 \in L^2(\Omega)$ , the terms in  $\alpha |\nabla w^+|^2 (\varphi - 1)$  are integrable thanks to Hardy's inequality, which ensures that  $\frac{\varphi-1}{\sigma}$  is square integrable on  $\Omega$ . Therefore the quantity

$$\sum_{j=1,2} \int_{\Omega_j} \alpha \nabla \overline{(v_j - w_{k-l}^+)} \cdot \nabla (u_j - w_{g-h}^+) (\varphi - 1) d\mathbf{x}$$

is well defined. The first two lines above thus rewrite

$$\begin{aligned} A &:= \sum_{j=1,2} \int_{\Omega_j} \left( \alpha (u_j - w_{g-h}^+) \nabla \overline{(v_j - w_{k-l}^+)} \cdot \nabla (\varphi - 1) + q_h^+ \overline{(v_j - w_{k-l}^+)} (\varphi - 1) \right) d\mathbf{x} \\ &\quad - \int_{\Omega_j} \left( \alpha \overline{(v_j - w_{k-l}^+)} \nabla (u_j - w_{g-h}^+) \cdot \nabla (\varphi - 1) + \overline{q_l^+} (u_j - w_{g-h}^+) (\varphi - 1) \right) d\mathbf{x} \\ &= \sum_{j=1,2} \int_{\Omega_j} \left( \alpha \nabla \overline{(v_j - w_{k-l}^+)} \cdot \nabla \left( (u_j - w_{g-h}^+) (\varphi - 1) \right) + q_h^+ \overline{(v_j - w_{k-l}^+)} (\varphi - 1) \right) d\mathbf{x} \\ &\quad - \int_{\Omega_j} \left( \alpha \nabla (u_j - w_{g-h}^+) \cdot \nabla \left( \overline{(v_j - w_{k-l}^+)} (\varphi - 1) \right) + \overline{q_l^+} (u_j - w_{g-h}^+) (\varphi - 1) \right) d\mathbf{x} \\ &= \sum_{j=1,2} \int_{\Omega_j} \left( \alpha \nabla \overline{(v_j - w_{k-l}^+)} \cdot \nabla \left( (u_j - w_{g-h}^+) (\varphi - 1) \right) + (u_j - w_{g-h}^+ + q_h^+) \overline{(v_j - w_{k-l}^+)} (\varphi - 1) \right) d\mathbf{x} \\ &\quad - \int_{\Omega_j} \left( \alpha \nabla (u_j - w_{g-h}^+) \cdot \nabla \left( \overline{(v_j - w_{k-l}^+)} (\varphi - 1) \right) + \overline{(v_j - w_{k-l}^+ + q_l^+)} (u_j - w_{g-h}^+) (\varphi - 1) \right) d\mathbf{x}. \end{aligned}$$

Since on each  $\Omega_j$   $u_j - w_{g-h}^+$  verifies weakly  $-\nabla \cdot (\alpha \nabla (u_j - w_{g-h}^+)) - (u_j - w_{g-h}^+) = q_h^+$  with boundary conditions on  $\Gamma_j$   $\alpha \partial_n (u_j - w_{g-h}^+) + i\lambda (u_j - w_{g-h}^+) = f + z_h^+$ , and since  $v_j - w_{k-l}^+$  verifies the corresponding relations for  $g = k, h = l$  and  $u_j = v_j = u_j(k)$ , integrating by parts and using that  $(\varphi - 1)|_\Sigma = 0$  it yields

$$\begin{aligned} A &= \sum_{j=1,2} \int_{\Gamma_j} \left( \overline{(v_j - w_{k-l}^+)} \alpha \partial_n (u_j - w_{g-h}^+) - (u_j - w_{g-h}^+) \alpha \partial_n \overline{(v_j - w_{k-l}^+)} \right) dl \\ &= \sum_{j=1,2} \int_{\Gamma_j} \left( \overline{(v_j - w_{k-l}^+)} (-i\lambda (u_j - w_{g-h}^+) + z_h^+) - (u_j - w_{g-h}^+) \overline{(-i\lambda (v_j - w_{k-l}^+) + z_l^+)} \right) dl \end{aligned}$$

and the result is proven.  $\square$

**Lemma 22.** For all  $g \in H^2(\Sigma)$ ,

$$\operatorname{Im} \int_{\Omega} q_g^+ \overline{w_g^+} dx = \pi \|g\|_{L_w^2(\Sigma)}^2 - \operatorname{Im} \int_{\Gamma} (z_g^+ - i\lambda w_g^+) \overline{w_g^+} dl. \quad (4.16)$$

*Proof.* For all  $\epsilon > 0$ , define  $\psi_\epsilon$  a cutoff of  $\Sigma$ , a real valued piecewise affine function of  $\sigma$  such that  $\psi_\epsilon(\gamma, \sigma) = 0$  if  $|\sigma| < \epsilon/2$  and  $\psi_\epsilon(\gamma, \sigma) = 1$  if  $|\sigma| > \epsilon$ . For all  $g \in H^2(\Sigma)$ , using  $\psi_\epsilon$  and integrating by parts,

$$\begin{aligned} \operatorname{Im} \int_{\Omega} q_g^+ \overline{w_g^+} dx &= \lim_{\epsilon \rightarrow 0} \operatorname{Im} \int_{\Omega} q_g^+ \overline{w_g^+} \psi_\epsilon dx \\ &= \lim_{\epsilon \rightarrow 0} \operatorname{Im} \left( \int_{\Omega} \left( \alpha |\nabla w_g^+|^2 \psi_\epsilon + \alpha \overline{w_g^+} \nabla w_g^+ \cdot \nabla \psi_\epsilon - |w_g^+|^2 \psi_\epsilon \right) dx - \int_{\Gamma} \alpha \partial_n w_g^+ \overline{w_g^+} dl \right) \\ &= \lim_{\epsilon \rightarrow 0} \operatorname{Im} \left( \int_{\Omega} \alpha \overline{w_g^+} \nabla w_g^+ \cdot \nabla \psi_\epsilon dx - \int_{\Gamma} (z_g^+ - i\lambda w_g^+) \overline{w_g^+} dl \right). \end{aligned}$$

Let us now compute this first integral on  $\Omega$  for a given  $\epsilon > 0$ . Expressing the functions in terms of  $(\gamma, \sigma)$ ,

$$\begin{aligned} \operatorname{Im} \int_{\Omega} \alpha \overline{w_g^+} \nabla w_g^+ \cdot \nabla \psi_\epsilon dx &= \operatorname{Im} \int_{\gamma} \int_{-\epsilon}^{-\epsilon/2} \frac{-2|g(\gamma)|^2}{\epsilon r(\gamma)} \frac{\alpha}{r(\gamma)\sigma} \left( \log |r(\gamma)\sigma| - i\frac{\pi}{2} \operatorname{sign}(r(\gamma)) \right) p_{\Omega}(\gamma, \sigma) d\sigma d\gamma \\ &\quad + \operatorname{Im} \int_{\gamma} \int_{\epsilon/2}^{\epsilon} \frac{2|g(\gamma)|^2}{\epsilon r(\gamma)} \frac{\alpha}{r(\gamma)\sigma} \left( \log |r(\gamma)\sigma| + i\frac{\pi}{2} \operatorname{sign}(r(\gamma)) \right) p_{\Omega}(\gamma, \sigma) d\sigma d\gamma \\ &= \operatorname{Im} \int_{\gamma} \int_{\epsilon/2}^{\epsilon} \left[ \frac{-2|g(\gamma)|^2}{\epsilon r(\gamma)} \frac{\alpha}{r(\gamma)\sigma} \left( \log |r(\gamma)\sigma| - i\frac{\pi}{2} \operatorname{sign}(r(\gamma)) \right) p_{\Omega}(\gamma, -\sigma) \right. \\ &\quad \left. + \frac{2|g(\gamma)|^2}{\epsilon r(\gamma)} \frac{\alpha}{r(\gamma)\sigma} \left( \log |r(\gamma)\sigma| + i\frac{\pi}{2} \operatorname{sign}(r(\gamma)) \right) p_{\Omega}(\gamma, \sigma) \right] d\sigma d\gamma \end{aligned}$$

for the weight  $p_{\Omega}(\gamma, \sigma) = 1 - \sigma/R(\gamma)$  defined in (1.5). Identifying the imaginary part, it follows

$$\begin{aligned} \operatorname{Im} \int_{\Omega} \alpha \overline{w_g^+} \nabla w_g^+ \cdot \nabla \psi_\epsilon dx &= \int_{\gamma} \int_{\epsilon/2}^{\epsilon} \frac{2|g(\gamma)|^2}{\epsilon |r(\gamma)|} \frac{\alpha}{r(\gamma)\sigma} \pi d\sigma d\gamma \\ &\xrightarrow{\epsilon \rightarrow 0} \int_{\gamma} \frac{|g(\gamma)|^2}{|r(\gamma)|} \pi d\gamma, \end{aligned}$$

which is equal to  $\pi \|g\|_{L_w^2(\Sigma)}$ . The proof is ended.  $\square$

With this technical lemma we can now state the following.

**Proposition 23.** For all  $(\mathbf{u}(g), g, h) \in K$ ,

$$a^+((0, 0, h), (0, 0, h)) = 2i\pi \|h\|_{L_w^2(\Sigma)}^2 \quad \text{and} \quad a^+((\mathbf{u}(g), g, 0), (\mathbf{u}(g), g, 0)) = -2i\lambda \sum_{j=1,2} \int_{\Gamma_j} |u_j(g) - w_g^+|^2 ds.$$

*Proof.* Let  $h \in H^2(\Sigma)$ . According to (4.15),

$$\begin{aligned} a^+((0, 0, h), (0, 0, h)) &= \int_{\Omega} (q_h^+ \overline{w_h^+} - \overline{q_h^+} w_h^+) dx + \int_{\Gamma} (z_h^+ \overline{w_h^+} - \overline{z_h^+} w_h^+ - 2i\lambda |w_h^+|^2) dl \\ &= 2i \operatorname{Im} \left( \int_{\Omega} q_h^+ \overline{w_h^+} dx + \int_{\Gamma} (z_h^+ \overline{w_h^+} - i\lambda |w_h^+|^2) dl \right). \end{aligned}$$

By Lemma 22, it is thus equal to  $2i\pi\|h\|_{L_w^2(\Sigma)}^2$ . Now let  $g \in H^2(\Sigma)$  and  $\mathbf{u} = \mathbf{u}(g) \in Q$ . Relying again on (4.15), it follows

$$a^+((\mathbf{u}(g), g, 0), (\mathbf{u}(g), g, 0)) = \sum_{j=1,2} \int_{\Gamma_j} -2i\lambda |u_j - w_g^+|^2 dl.$$

□

**Proposition 24.** *Let  $\rho, \mu > 0$ . The sesquilinear form  $a_r^+$  defined in (4.10) is  $\mathbb{T}$ -coercive on  $K$  in the sense that there exists a positive constant  $C$  such that for all  $(\mathbf{u}(g), g, h) \in K$ ,*

$$\operatorname{Im} a_r^+((\mathbf{u}(g), g, h), \mathbb{T}(\mathbf{u}(g), g, h)) \geq C \|(\mathbf{u}(g), g, h)\|_V,$$

for  $\mathbb{T} : (\mathbf{u}, g, h) \in V \mapsto (-\mathbf{u}, -g, h) \in V$ . In particular, the operator  $A_{KK}^+$ , defined in (4.12) is an isomorphism.

*Proof.* Let  $\rho, \mu > 0$ , and  $(\mathbf{u}(g), g, h) \in K$ . Using the definition of form  $a_r^+$  and the fact that  $a^+$  is anti-hermitian, it follows from Proposition 23 that

$$\begin{aligned} \operatorname{Im} a_r^+((\mathbf{u}(g), g, h), (-\mathbf{u}(g), -g, h)) &= 2\pi \|h\|_{L_w^2(\Sigma)}^2 + 2\lambda \sum_{j=1,2} \|u_j(g) - w_g^+\|_{L^2(\Gamma_j)}^2 \\ &\quad + \rho \|g\|_{H^2(\Sigma)}^2 + \mu \|h\|_{H^2(\Sigma)}^2 \\ &\geq C (\|g\|_{H^2(\Sigma)}^2 + \|h\|_{H^2(\Sigma)}^2) \end{aligned}$$

for a  $C > 0$ . Using Proposition 13 on the control of  $\|\mathbf{u}(g)\|_Q$  by  $\|g\|_{H^2(\Sigma)}$ , we are able to conclude. □

*Proof.* [Theorem 16] The hypotheses of Theorem 18 have been verified in Propositions 19 and 24. □

**Remark 25.** *An equivalence between  $g \mapsto \lambda \|u_j(g) - w_g^+\|_{L^2(\Gamma)}$  and the  $L^2(\Sigma)$  norm can be obtained on the kernel of  $a^+$ , see [17].*

## 5 Numerical illustration

The general objectives of this section are to confirm the theoretical analysis by showing numerical results for the approximation of singular solutions of system (4.11) and to show that the mixed variational method developed in this work is compatible with standard finite element solvers, such as Freefem++ [13] in our case. To do so, we construct simple reference analytical solutions with and without a logarithmic singularity and use them for numerical error measurements.

### 5.1 Construction of analytical solutions

We construct an analytical solution on a simplified model. Dropping out the 0 order term, which is a compact perturbation, in (1.1), one has

$$\begin{cases} -\operatorname{div}(\alpha \nabla u) &= 0 & \text{in } \Omega, \\ \alpha \partial_n u + i\lambda u &= f & \text{on } \Gamma. \end{cases} \quad (5.1)$$

Let  $\Omega$  be  $(-1, 1) \times (-1, 1)$  with periodic boundary conditions at  $y = \pm 1$ , with  $\Sigma = \{x = 0\}$  and  $\alpha = x$ . A Fourier decomposition in the  $y$ -direction  $u(\mathbf{x}) = \sum_{k \in \mathbb{Z}} u_k(x) \exp(ik\pi y)$  yields for all modes

$$x u_k'' + u_k' - x(k\pi)^2 u_k = 0 \quad \text{in } (-1, 1).$$

The general solution is

$$u_k(x) = \begin{cases} a_k I_0(k\pi x) + b_k K_0(k\pi x) & \forall k \neq 0, \\ a_0 + b_0 \left( \log|x| - \frac{i\pi}{2} \operatorname{sign}(x) \right) & k = 0, \end{cases}$$

where the modified Bessel functions are given by

$$\begin{cases} I_0(x) &= J_0(ix), \\ K_0(x) &= -\frac{\pi}{2} (iJ_0(ix) + Y_0(-ix)), \end{cases}$$



see Section 1.1 for the Bessel functions. We consider four test cases which respective solutions are

$$u^1(\mathbf{x}) = 1, \quad u^2(\mathbf{x}) = \log|x| - \frac{i\pi}{2} \text{sign}(x), \quad u^3(\mathbf{x}) = e^{i\pi y} I_0(\pi x) \quad \text{and} \quad u^4(\mathbf{x}) = e^{i\pi y} K_0(\pi x). \quad (5.2)$$

The functions  $u^1$  and  $u^2$  are solutions for the  $k = 0$  mode. For these two functions, one computes easily the associated  $(\mathbf{u}, g, h) \in V$  and  $\boldsymbol{\lambda} \in Q$  solution of the variational formulation (4.11). According to the decomposition (3.11), one has

$$\begin{cases} u_j^1 = 1 & \text{and} & g^1 = 0, \\ u_j^2 = 0 & \text{and} & g^2 = -1, \end{cases} \quad (5.3)$$

and in both cases,  $h = g$  and  $\lambda_j = u_j \varphi$ , where  $\varphi$  is the cut-off function that localizes near  $\Sigma$ . In the illustration below, the cut-off function is  $\varphi(x) = \exp(4x^2/(4x^2 - 1)) \mathbf{1}_{(-1/2, 1/2)}(x)$ .

On the other hand, the functions  $u^3$  and  $u^4$  are solutions for the  $k = 1$  mode. One can compute the corresponding  $(\mathbf{u}, g, h) \in V$  and  $\boldsymbol{\lambda} \in Q$  as well.

The functions  $u^1$  and  $u^3$  are regular, while the functions  $u^2$  and  $u^4$  exhibit the logarithmic singularity which is the object of this study.

With  $\lambda = 1$ , the boundary condition source term  $f$  in (5.1) is determined accordingly and

$$f^1(\mathbf{x}) = i, \quad f^2(\mathbf{x}) = (1 + \frac{\pi}{2}) \text{sign}(x), \quad f^3(\mathbf{x}) = e^{i\pi y} (\pi I_0'(\pi x) + iI_0(\pi x)), \quad f^4(\mathbf{x}) = e^{i\pi y} (\pi K_0'(\pi x) + iK_0(\pi x)).$$

## 5.2 Principle of the discretization

The tests were implemented using the Freefem++ [13] code. Freefem++ offers a large choice of bidimensional finite elements, but does not allow so far to discretize a generic bilinear form like  $\mathfrak{a}_h(\mathbf{u}_h, \mathbf{v}_h)$  where  $\mathbf{u}_h$  belongs to a 1D FE space and  $\mathbf{v}_h$  to a 2D FE space. Since we need this feature, we have decided to focus on simple geometry and to use a penalization method to constrain a 2D FE space to unidimensionality. For this reason, the  $H^2(\Sigma)$  space is discretized using 2D P3 Hsieh-Clough-Tocher (HCT) elements [7] penalized in the  $x$ -direction on a 2D triangular mesh denoted  $\Sigma^M$ . The upper script  $M$  stands for the number of triangles that lie on  $\Sigma$ . The more standard  $H^1(\Omega_j)$  2D spaces are discretized using P1 elements on uniform triangular meshes of  $\Omega_j$  denoted  $\Omega_j^N$ , where the upper script  $N$  stands for the number of edges on each  $\Omega_j$ . In the presented test cases, the parameters are  $M = 4$  for the P3 elements and  $N = 40$  for the P1 elements.

The discretization of (4.11) leads to the linear system

$$\mathbf{A}\mathbf{U} = \mathbf{L} \quad (5.4)$$

with  $\mathbf{U} = (\underline{u}_1, \underline{u}_2, \underline{g}, \underline{h}, \underline{\lambda}_1, \underline{\lambda}_2)$  the coefficients of the solution in the appropriate FE bases, and where  $\mathbf{A}$  and  $\mathbf{L}$  have block matricial structures

$$\mathbf{A} = \begin{pmatrix} A_1 & 0 & A_{g1} & A_{h1} & B_1 & 0 \\ * & A_2 & A_{g2} & A_{h2} & 0 & B_2 \\ * & * & A_g & A_{hk} & B_{1k} & B_{2k} \\ * & * & * & A_h & 0 & 0 \\ * & * & * & * & 0 & 0 \\ * & * & * & * & * & 0 \end{pmatrix}, \quad \mathbf{L} = \begin{pmatrix} 0 \\ 0 \\ 0 \\ 0 \\ \underline{\ell}_1 \\ \underline{\ell}_2 \end{pmatrix}. \quad (5.5)$$

As a consequence of the structure (4.11) and because the sesquilinear form  $a^+$  (4.8) is anti-hermitian, the matrix  $\mathbf{A}$  is anti-hermitian  $\mathbf{A} = -\overline{\mathbf{A}}^t$ . Note that the penalization used to achieve unidimensionality is performed in a similar way to (4.10), so that the anti-hermitian nature of the matrix is preserved.

## 5.3 Numerical results

The numerical solution is obtained by solving the linear system (5.4)-(5.5). With the numerical implementation described above, we observe that the matrices are non-singular and the computations run smoothly.

	case 1	case 2	case 3	case 4
$\frac{\ u_{ex} - u_{num}\ _{L^2}}{\ u_{ex}\ _{L^2}}$	0.017	0.047	0.008	0.024

Table 1: For the four test cases of (5.2), relative  $L^2(\Omega)$  error between the exact solution  $u_{ex}$  and its approximation  $u_{num} = u_j - w_g^+$ .

### 5.3.1 Numerical errors

In Table 1 we present the relative errors in  $L^2(\Omega)$  norms for the four test cases on the total solution  $u$  of (5.1). We observe a relative error of order  $10^{-2}$  for all problems even for this coarse mesh. We also observe that the error magnitude is slightly smaller for the case 1 in mode 0 and case 3 in mode 1. Our interpretation is that it is due to the regularity of  $u^1$  and  $u^3$ , whereas  $u^2$  and  $u^4$  have logarithmic singularities.

In Table 2, we present the block residual errors of AU – L. The block residuals are defined from (5.5) as the residuals for each of the 6 unknowns. It allows a more accurate description of the residual error. We perform the test for the test cases 1 and 2, which means that U takes the two exact values

$$U^1 = \begin{pmatrix} 1_N^{\Omega_1} \\ 1_N^{\Omega_2} \\ 0 \\ 0 \\ \varphi_N^{\Omega_1} \\ \varphi_N^{\Omega_2} \end{pmatrix} \quad \text{and} \quad U^2 = \begin{pmatrix} 0 \\ 0 \\ -1_M^\Sigma \\ -1_M^\Sigma \\ 0 \\ 0 \end{pmatrix}. \quad (5.6)$$

In this expression cf. (5.3),  $1_N^{\Omega_j}$  and  $\varphi_N^{\Omega_j}$  are the coefficients of the P1 interpolations of the functions 1 and  $\varphi$  in  $H^1(\Omega_j)$ , and  $1_M^\Sigma$  are the coefficients of 1 in the HCT space.

A priori, a residual error is the result of three main contributions which are an interpolation error, a penalization error, and errors due to the approximation of the bilinear forms.

We observe in Table 2 that all block residual errors are close to machine precision, except for the first four blocks in test case 1. After inspection of the structure of  $A$  and the nature of the exact solutions (5.6), our interpretation is that when machine precision is reached, the only significant error comes from interpolation errors.

	norm	case 1	case 2
$u_1$ block	$L^2(\Omega)$	0.0419775	7.76013e-16
$u_2$ block	$L^2(\Omega)$	0.0491617	7.14962e-16
$g$ block	$L^2(\Sigma)$	0.0360422	3.86971e-12
$h$ block	$L^2(\Sigma)$	0.0361913	4.37914e-12
$\lambda_1$ block	$L^2(\Omega)$	7.04875e-15	7.68808e-16
$\lambda_2$ block	$L^2(\Omega)$	7.29193e-15	2.70813e-15

Table 2: Residual errors in  $L^2$  norms for the two first test cases.

### 5.3.2 Plot of the numerical solutions in cases 3 and 4

The imaginary part of the numerical approximation of the solutions  $u^3$  and  $u^4$  is shown on the right part of figures 2 and 3. The exact solutions, which are Bessel functions modulated in the direction  $y$ , are shown on the left part of the figures. The trace of the 2D FE mesh is also visible, together with the vertical line  $\Sigma$ . In Fig. 2, we observe that the numerical solution on the right is qualitatively and quantitatively very similar to the exact one on the left. The Fig. 3 is of greater interest since the exact solution presents the logarithmic singular behaviour. Qualitatively, the results are very similar and the logarithmic singularity seems to be correctly captured by the numerical solution. Quantitatively, the  $L^2$  norm of the relative error is small, as reported in Table 1, even if a small discrepancy is visible, partly due to a different scaling between both representations.

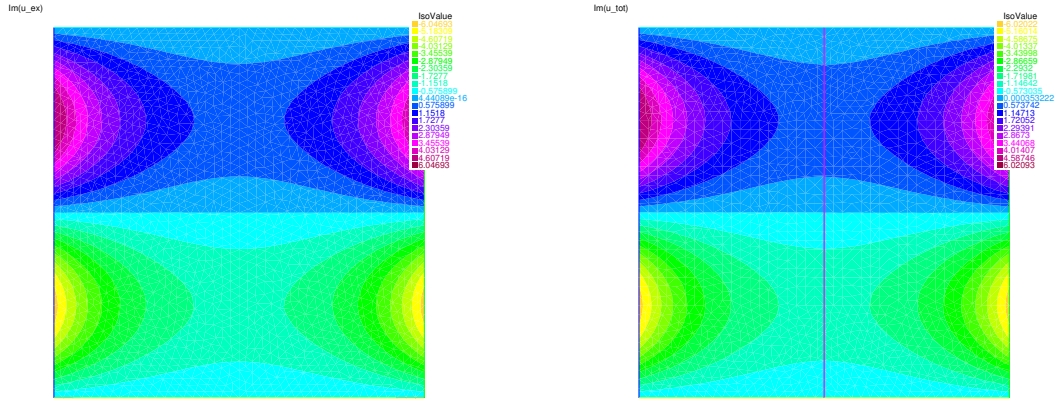


Figure 2: Imaginary parts of the exact solution  $u^3(\mathbf{x}) = e^{i\pi y} I_0(\pi x)$  (left) and its approximation (right).

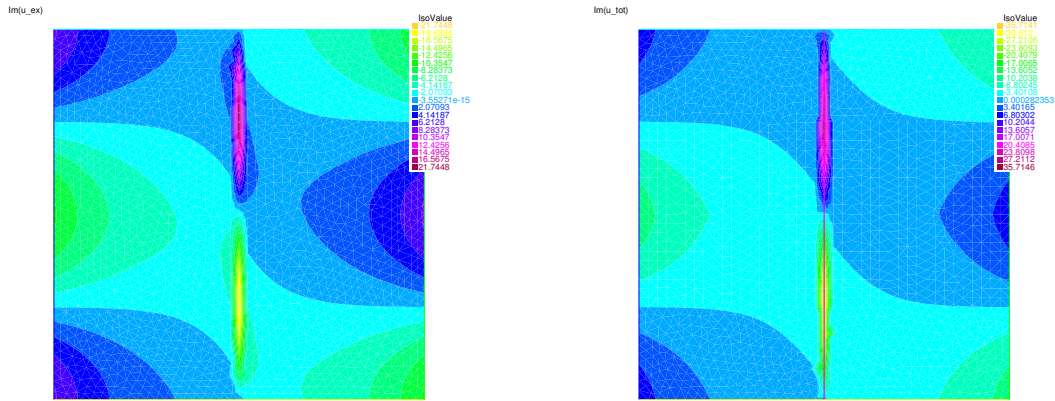


Figure 3: Imaginary parts of the exact solution  $u^4(\mathbf{x}) = e^{i\pi y} K_0(\pi x)$  (left) and its approximation (right).

### 5.3.3 Plot of the numerical solution of the full problem

We now consider the initial equation  $-\nabla \cdot (\alpha \nabla u) - u = 0$  from (1.1). For this problem, we do not know any analytical solution. In the matrix  $A$  (5.5), only the blocks  $A_1$  and  $A_2$  are modified by adding block diagonal terms corresponding to the discretization of  $\int_{\Omega_j} u_j^N \overline{v_j^N}$ . The results are displayed in Fig. 4 and can be compared to the results of figures 2 and 3. We observe that the logarithmic singularity seems to be present in both illustrations in Fig. 4.

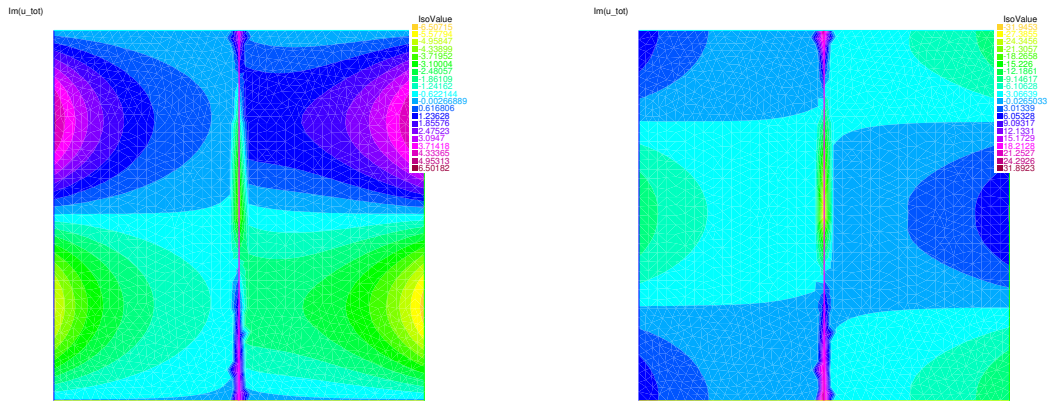


Figure 4: Imaginary parts of the numerical solutions to the complete variational formulation (4.11) with BC  $f^3$  (left) and  $f^4$  (right).

### 5.3.4 Comments on the value of the penalization parameters

The numerical illustrations presented above have been obtained with small non-zero values for the penalization parameters (4.10). Non-zero values of the penalization parameters are compatible with the theory presented in this work. Arbitrarily, we used the values  $\rho = 10^{-2}$  and  $\mu = 10^{-4}$ . However, other simulations taking these parameters equal to 0 lead to results with similar accuracy.

## References

- [1] F. Assous, P. Ciarlet Jr. and S. Labrunie, *Mathematical foundations of computational electromagnetism*, Springer-Verlag, 2018.
- [2] D. Boffi, F. Brezzi and M. Fortin *Mixed finite element methods and applications*. Springer-Verlag, Berlin, 2013.
- [3] A.-S. Bonnet-Ben Dhia, L. Chesnel, P. Ciarlet Jr., T-coercivity for scalar interface problems between dielectrics and metamaterials. *ESAIM: Mathematical Modeling and Numerical Analysis, EDP Sciences*, 46 (2012), no. 6, 1363-1387.
- [4] A.-S. Bonnet-Ben Dhia, L. Chesnel, X. Claeys, Radiation condition for a non-smooth interface between a dielectric and a metamaterial. *M3AS*, 23 (2013), no. 9, 1629-1662.
- [5] A.-S. Bonnet-Ben Dhia, P. Ciarlet Jr., C.M. Zwölf, Time harmonic wave diffraction problems in materials with sign-shifting coefficients. *Journal of Computational and Applied Mathematics*, 234 (2010), 1912-1919. Corrigendum 234 (2010), 2616.
- [6] M. Campos-Pinto and B. Després, Constructive formulations of resonant Maxwell's equations. *SIAM J. Math. Anal.* 49 (2017), no. 5, 3637-3670.
- [7] P. G. Ciarlet, Interpolation error estimates for the reduced Hsieh-Clough-Tocher triangle. *Math. of Comp.* 32 (1978), no. 142, 335-344.
- [8] B. Després, L.M. Imbert-Gérard and R. Weder, Hybrid resonance of Maxwell's equations in slab geometry. *J. Math. Pures Appl., Elsevier*, 101 (2014), no. 5, 623-659.
- [9] M. P. do Carmo, *Differential Geometry of Curves and Surfaces*. Prentice-Hall, 1976.
- [10] L. C. Evans, *Partial Differential Equations*. American Mathematical Society, 2010.
- [11] G. Di Fazio, M. S. Fanciullo and P. Zamboni, Harnack inequality and smoothness for quasilinear degenerate elliptic equations, *Journal of Differential Equations* 245 (2008), no. 10, 2939-2957.
- [12] E. B. Fabes, C. E. Kenig and R. P. Serapioni, The local regularity of degenerate elliptic equations, *Communications in Partial Differential Equations* 7 (1982), no. 1, 77-116.
- [13] F. Hecht, New development in FreeFem++, *J. Numer. Math.* 20 (2012), no. 3-4, 251-265.
- [14] S. A. Iskhokov, M. G. Gadoev and T. P. Konstantinova, Variational dirichlet problem for degenerate elliptic operators generated by noncoervice forms, *Doklady Mathematics* 91 (2015), no. 3, 255-258.
- [15] L. Lu, K. Crombé, D. Van Eester, L. Colas, J. Jacquot and S. Heuraux, Ion cyclotron wave coupling in the magnetized plasma edge of tokamaks: impact of a finite, inhomogeneous density inside the antenna box. *Plasma Physics and Controlled Fusion*, 58 (2016), no. 5.
- [16] H.-M. Nguyen, Limiting absorption principle and well-posedness for the Helmholtz equation with sign changing coefficients. *J. Math. Pures Appl., Elsevier*, 106 (2016), no. 2, 342-374.
- [17] A. Nicolopoulos, *Formulations variationnelles d'équations de Maxwell résonantes*, PhD Thesis, in preparation.
- [18] A. Nicolopoulos, M. Campos Pinto and B. Després, A stable formulation of resonant Maxwell's equations in cold plasma. *Journal of Computational and Applied Mathematics* (2019), <https://doi.org/10.1016/j.cam.2019.05.007>.

- [19] F. W. J. Olver, D. W. Lozier, R. F. Boisvert and C. W. Clark, NIST Handbook of Mathematical Functions. Cambridge University Press, New York, 2010.
- [20] T. H. Stix, Fast-wave heating of a two-component plasma, Technical Report, Plasma Physics Laboratory, Princeton University, 1975.
- [21] B. O. Turesson, Nonlinear Potential Theory and Weighted Sobolev Spaces. Springer-Verlag, Berlin, 2000.