



HAL
open science

Multi-characterization of a yet unknown gemological material used by Amerindians in the Antilles: sudoite $Mg_2Al_3(Si_3Al)O_{10}(OH)_8$, a mineral from the chlorite group

Alain Queffelec, Ludovic Bellot-Gurlet, Eddy A Foy, Emmanuel Fritsch,
Pierrick Fouéré

► **To cite this version:**

Alain Queffelec, Ludovic Bellot-Gurlet, Eddy A Foy, Emmanuel Fritsch, Pierrick Fouéré. Multi-characterization of a yet unknown gemological material used by Amerindians in the Antilles: sudoite $Mg_2Al_3(Si_3Al)O_{10}(OH)_8$, a mineral from the chlorite group. 22e colloque du Groupe des Méthodes Pluridisciplinaires Contribuant à l'Archéologie (GMPCA), May 2019, Montréal, Canada. hal-02140065

HAL Id: hal-02140065

<https://hal.science/hal-02140065v1>

Submitted on 26 May 2019

HAL is a multi-disciplinary open access archive for the deposit and dissemination of scientific research documents, whether they are published or not. The documents may come from teaching and research institutions in France or abroad, or from public or private research centers.

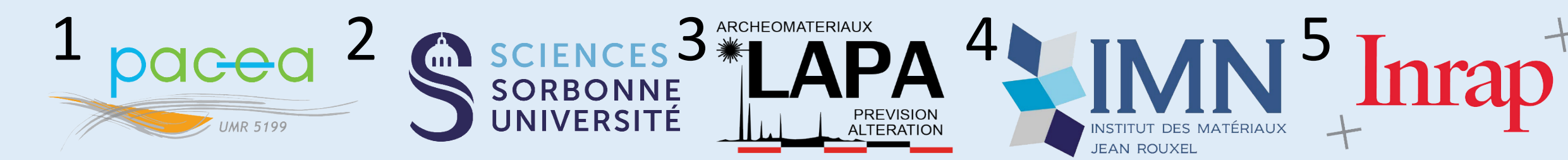
L'archive ouverte pluridisciplinaire **HAL**, est destinée au dépôt et à la diffusion de documents scientifiques de niveau recherche, publiés ou non, émanant des établissements d'enseignement et de recherche français ou étrangers, des laboratoires publics ou privés.

Multi-characterization of a yet unknown gemological material used by Amerindians in the Antilles:

sudoite $Mg_2Al_3(Si_3Al)O_{10}(OH)_8$, a mineral from the chlorite group.

Alain Queffelec¹, L. Bellot-Gurlet²,
E. Foy³, E. Fritsch⁴, P. Fouéré⁵

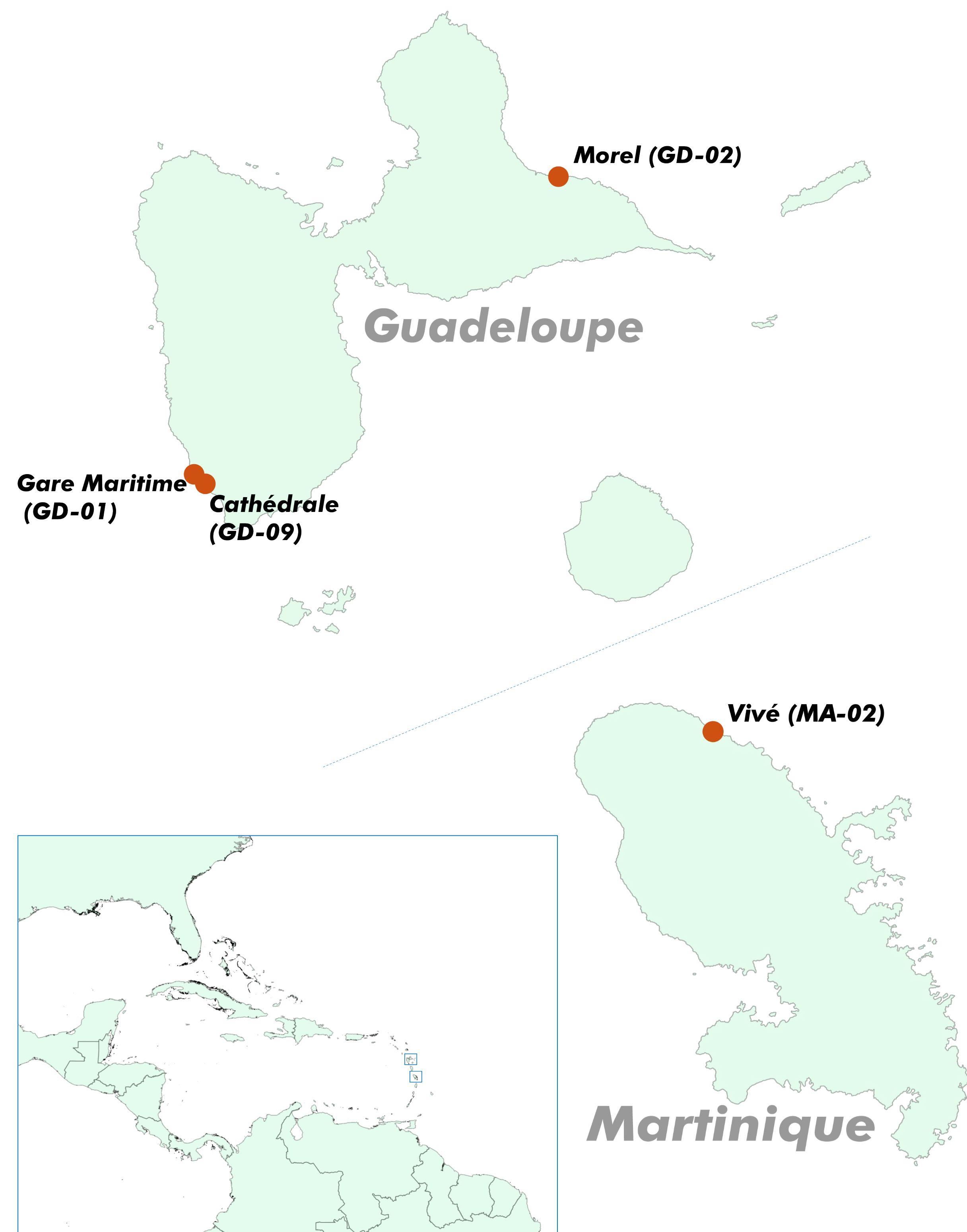
contact : alain.queffelec@u-bordeaux.fr



INTRODUCTION

This work is part of a recent effort to characterize the Saladoid mineral personal ornaments from the French islands in the Lesser Antilles (Queffelec et al. 2018).

The Saladoid period, in the Antilles, also known as Early Ceramic Age (500 BC – 1000 AD), is partly characterized by a very rich and diverse lapidary artwork, using a variety of raw materials, fashioned as beads and pendants.



METHOD

Raman spectroscopy (Bruker Senterra, 532 nm excitation).

XRD was performed using a rotating anode set-up, both in transmission (100 μm beam) and low angle reflection (5°, 30 μm beam).

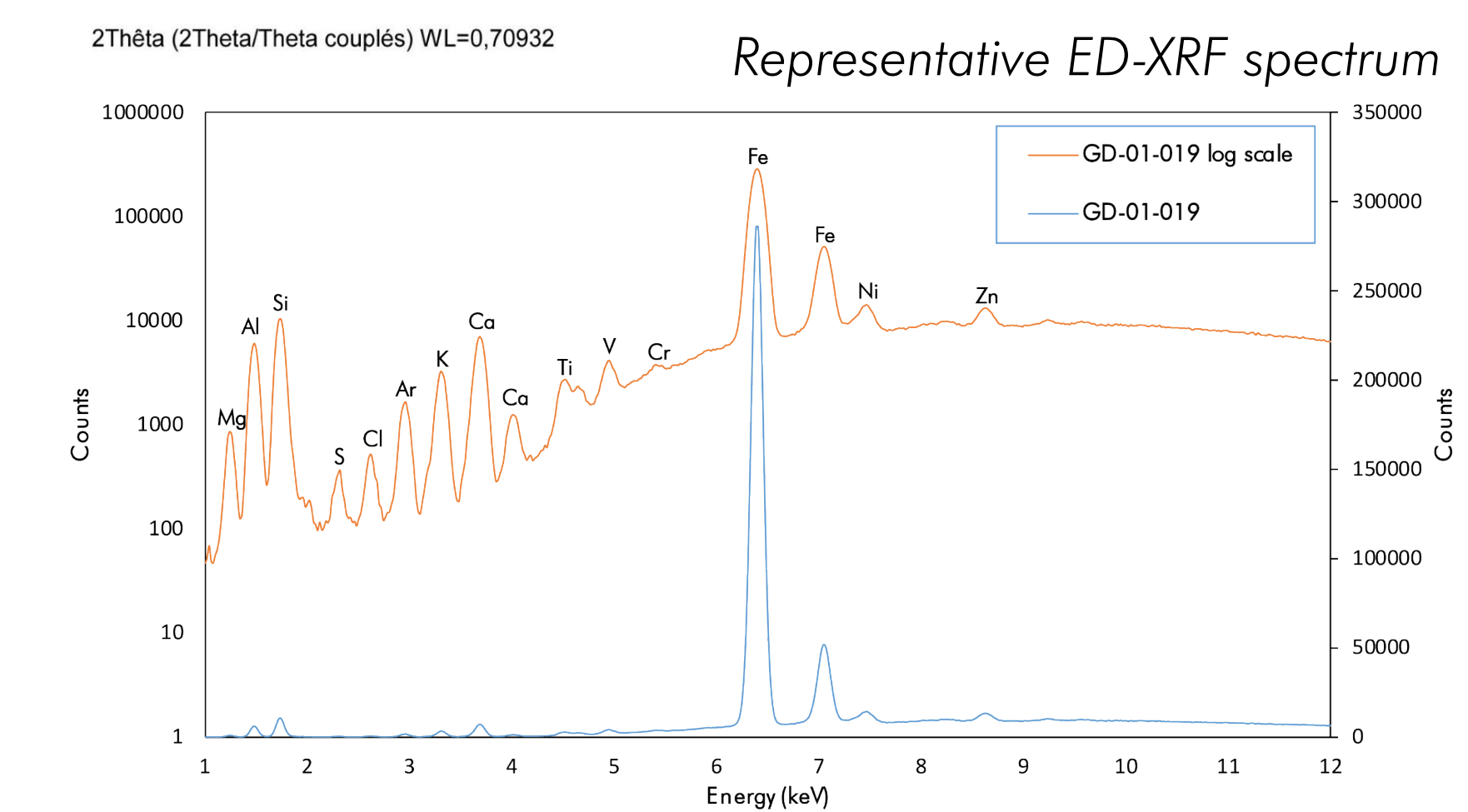
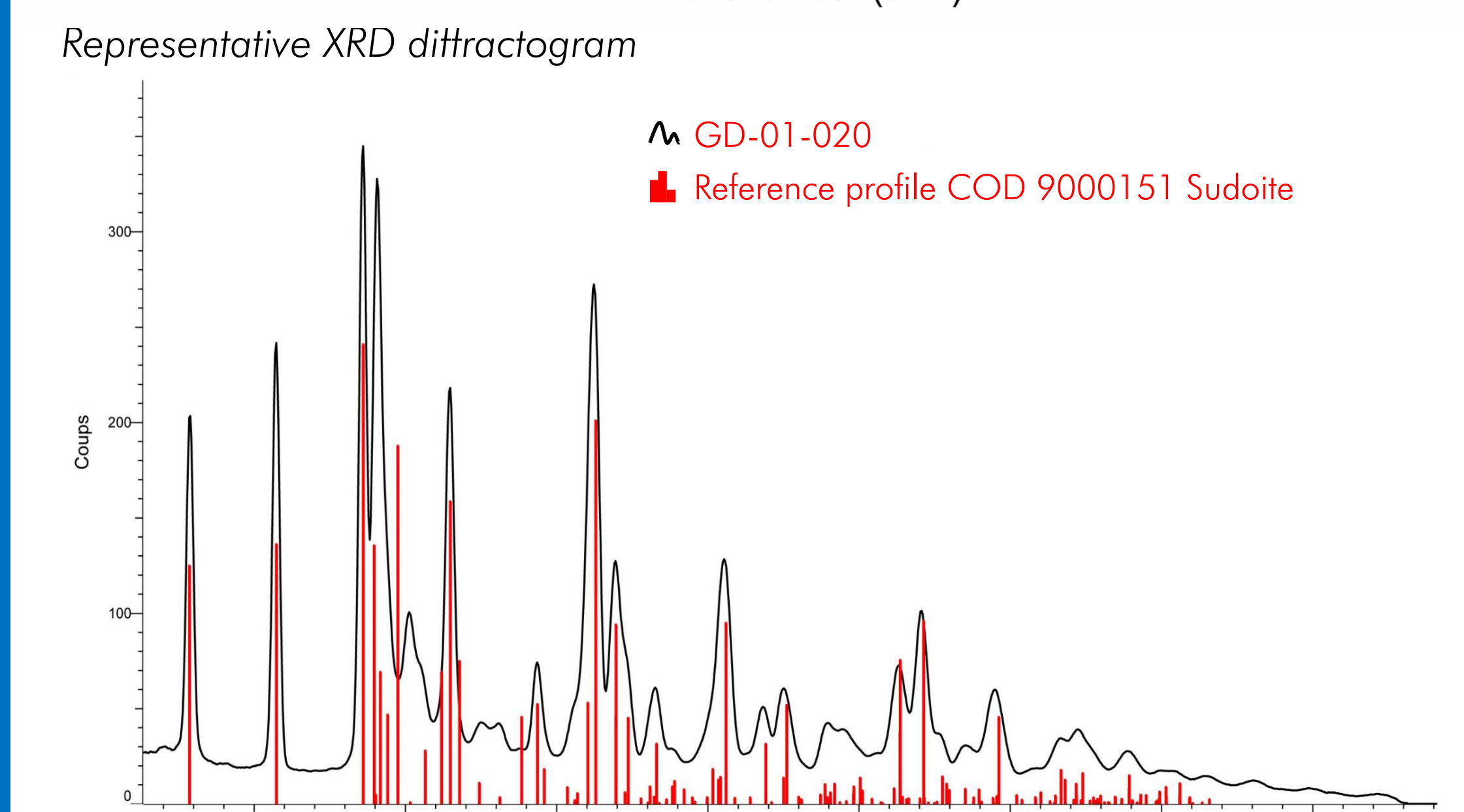
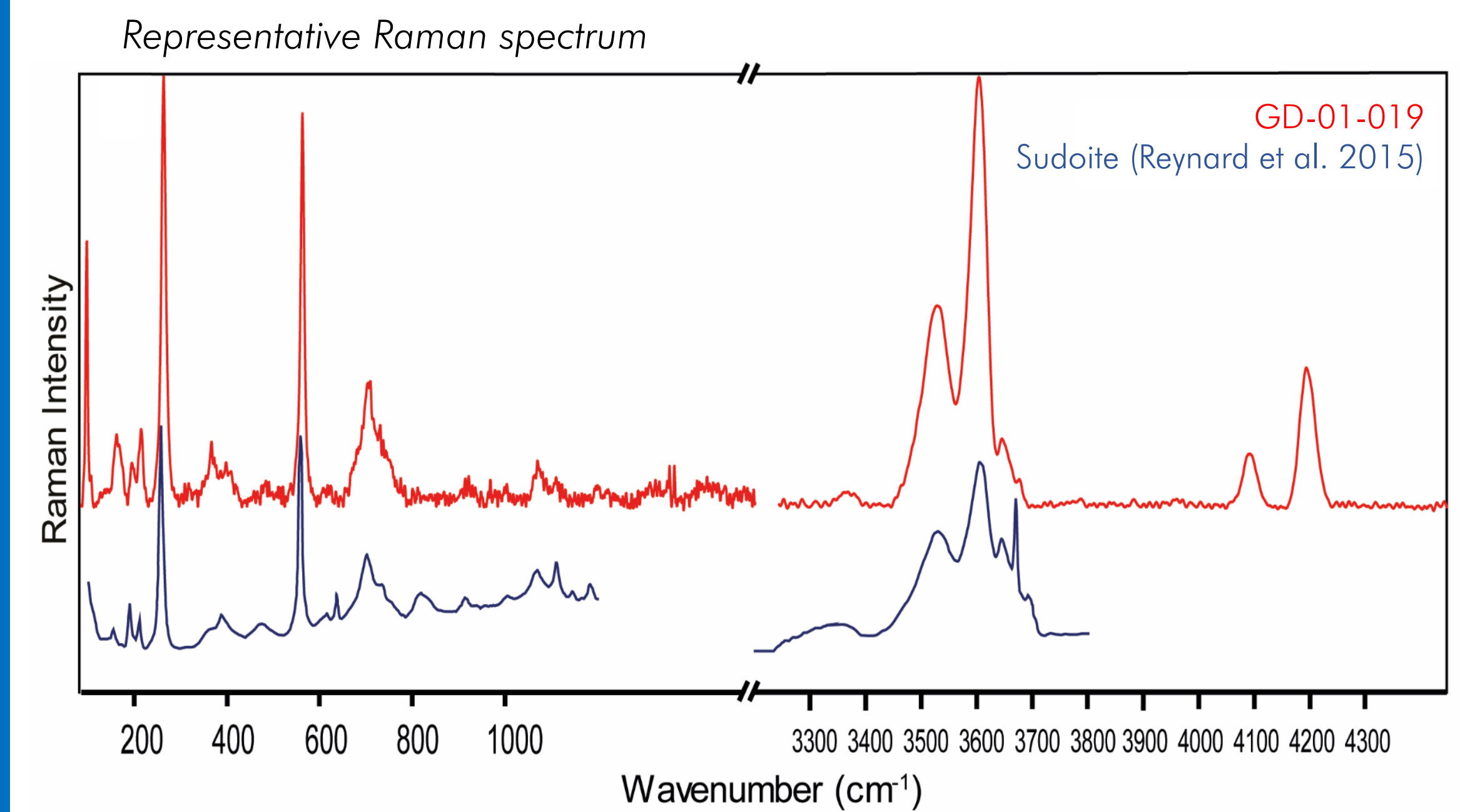
XRF (Bruker Tracer 5i, 15 kV, 100 μA, 120 s, vacuum)

Sudoite as a gem material First identification



These Amerindian ornaments from the Lesser Antilles were carved in this chlorite group mineral

RESULTS



Sudoite is typically white to light green. As all minerals from the chlorite group, it is soft and thus easy to carve.

DISCUSSION

This mineral has never been identified so far as a gem or ornamental material. It is thus a new type of the archaeological greenstones.

Sudoite is known from several metamorphic environments, especially in subductions zones. Therefore it is not surprising to find it in the Lesser Antilles, but its specific source remains unknown.

BIBLIOGRAPHY

Queffelec, A., Fouéré, P., Paris, C., Stouvenot, C., Bellot-Gurlet, L., 2018. Local production and long-distance procurement of beads and pendants with high mineralogical diversity in an early Saladoid settlement of Guadeloupe (French West Indies). *Journal of Archaeological Science: Reports* 21, 275–288.

Reynard, B., Bezacier, L., Caracas, R., 2015. Serpentes, talc, chlorites, and their high-pressure phase transitions: a Raman spectroscopic study. *Phys Chem Minerals* 42, 641–649.

FUNDINGS



WANT MORE INFO ?

A report in french



Recent paper



This poster

