



**HAL**  
open science

# Design Strategy of Conventional Electronic for Wireless Sensor Node Powered by Vibration Energy Harvester

Florian Huet, Vincent Boitier

► **To cite this version:**

Florian Huet, Vincent Boitier. Design Strategy of Conventional Electronic for Wireless Sensor Node Powered by Vibration Energy Harvester. INTERNATIONAL CONFERENCE ON RENEWABLE ENERGIES AND POWER QUALITY (ICREPQ'19), Apr 2019, TENERIFE, Spain. 2019. hal-02138511

**HAL Id: hal-02138511**

**<https://hal.science/hal-02138511>**

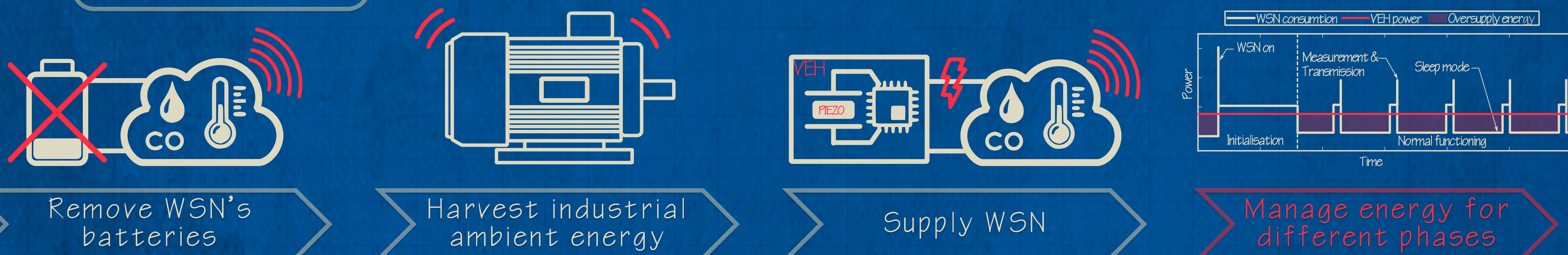
Submitted on 23 May 2019

**HAL** is a multi-disciplinary open access archive for the deposit and dissemination of scientific research documents, whether they are published or not. The documents may come from teaching and research institutions in France or abroad, or from public or private research centers.

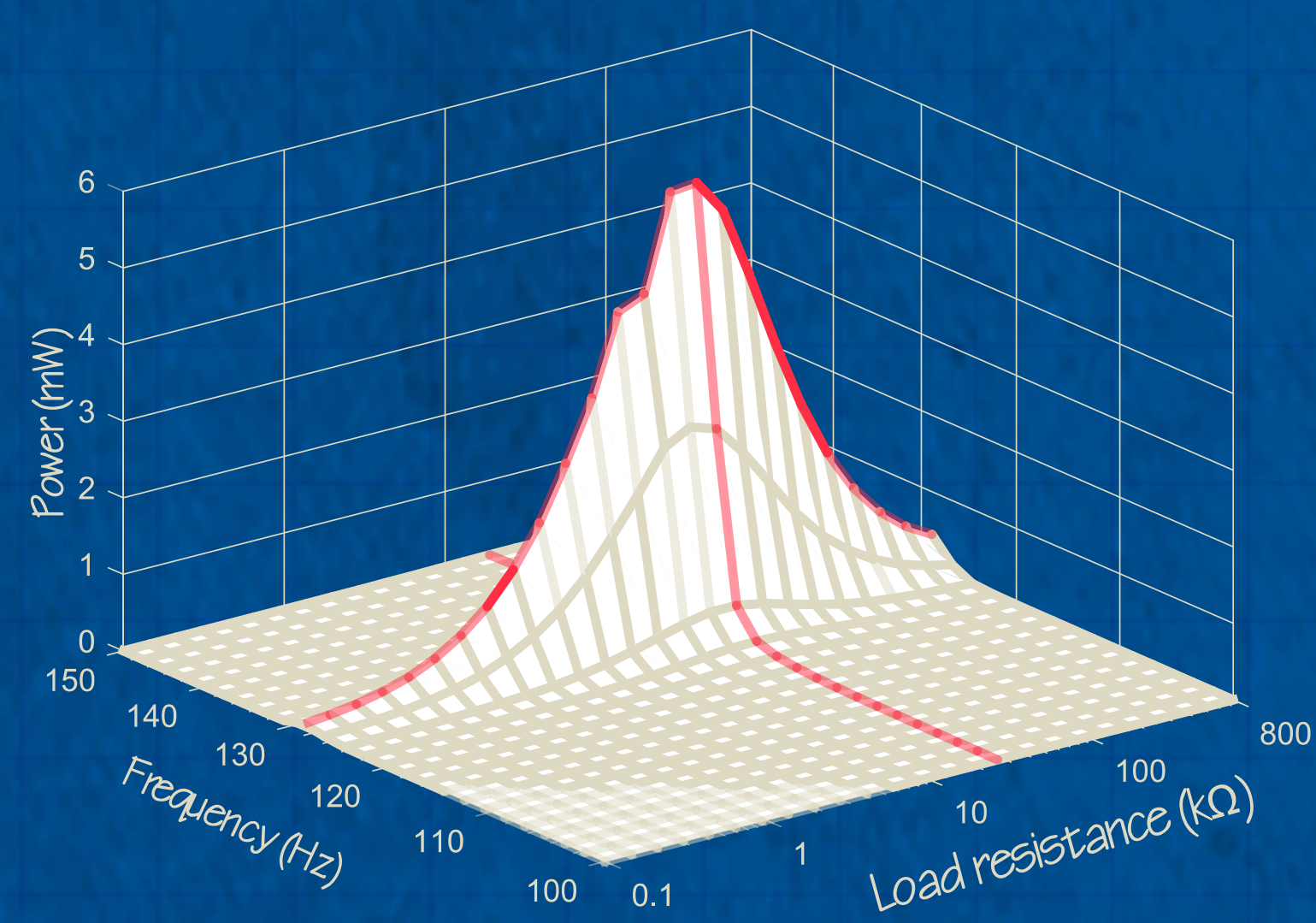
L'archive ouverte pluridisciplinaire **HAL**, est destinée au dépôt et à la diffusion de documents scientifiques de niveau recherche, publiés ou non, émanant des établissements d'enseignement et de recherche français ou étrangers, des laboratoires publics ou privés.



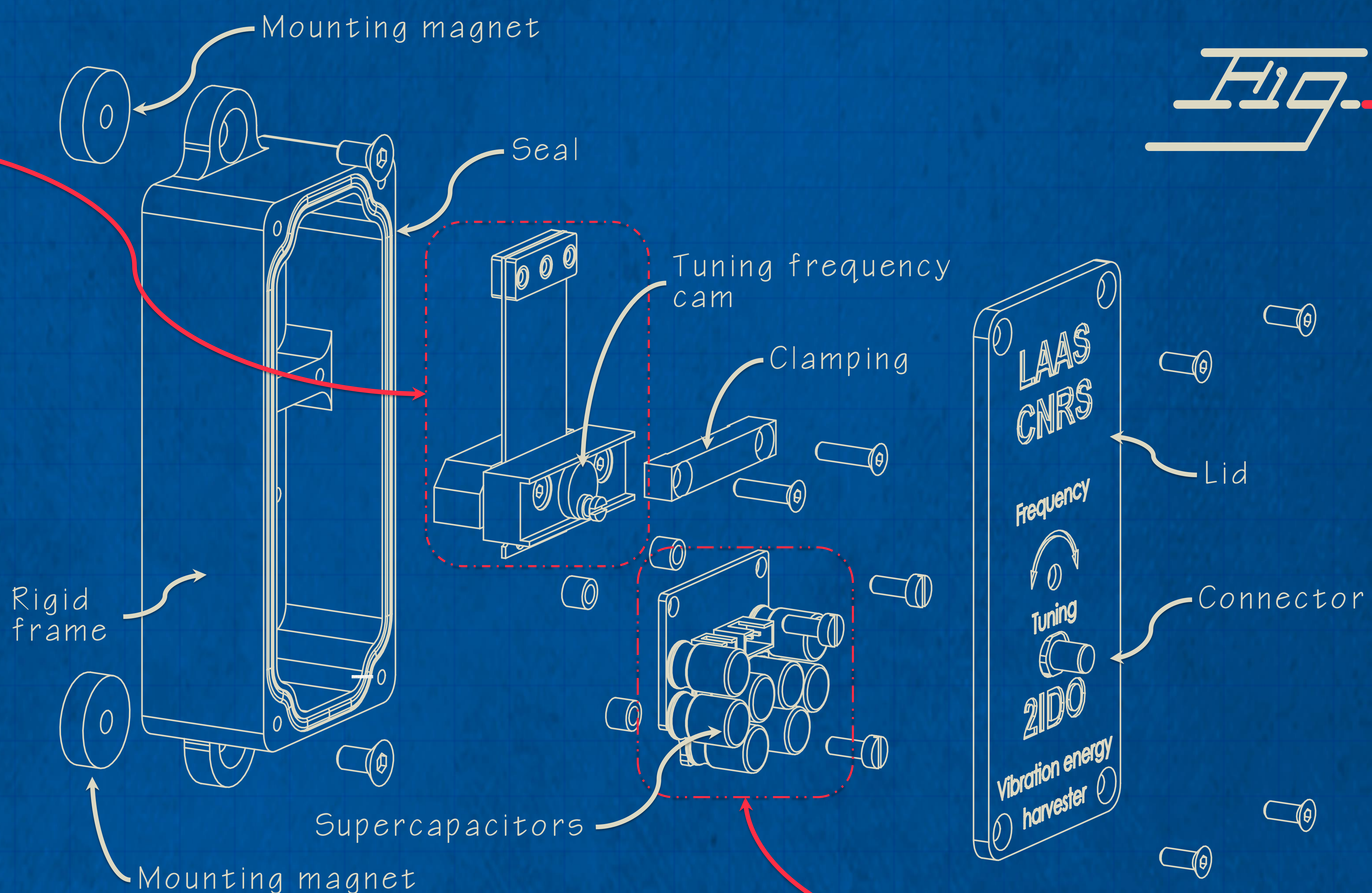
## Problematic



## Adjustable piezoelectric generator



- Acceleration: 1.4g
- Resonance frequency: 128.8 Hz
- Optimal load resistance: 27.5 kΩ
- Maximum power: 5.8 mW
- Voltage: 18.81 V @ Pmax



## Electronic management

## Fig. 2

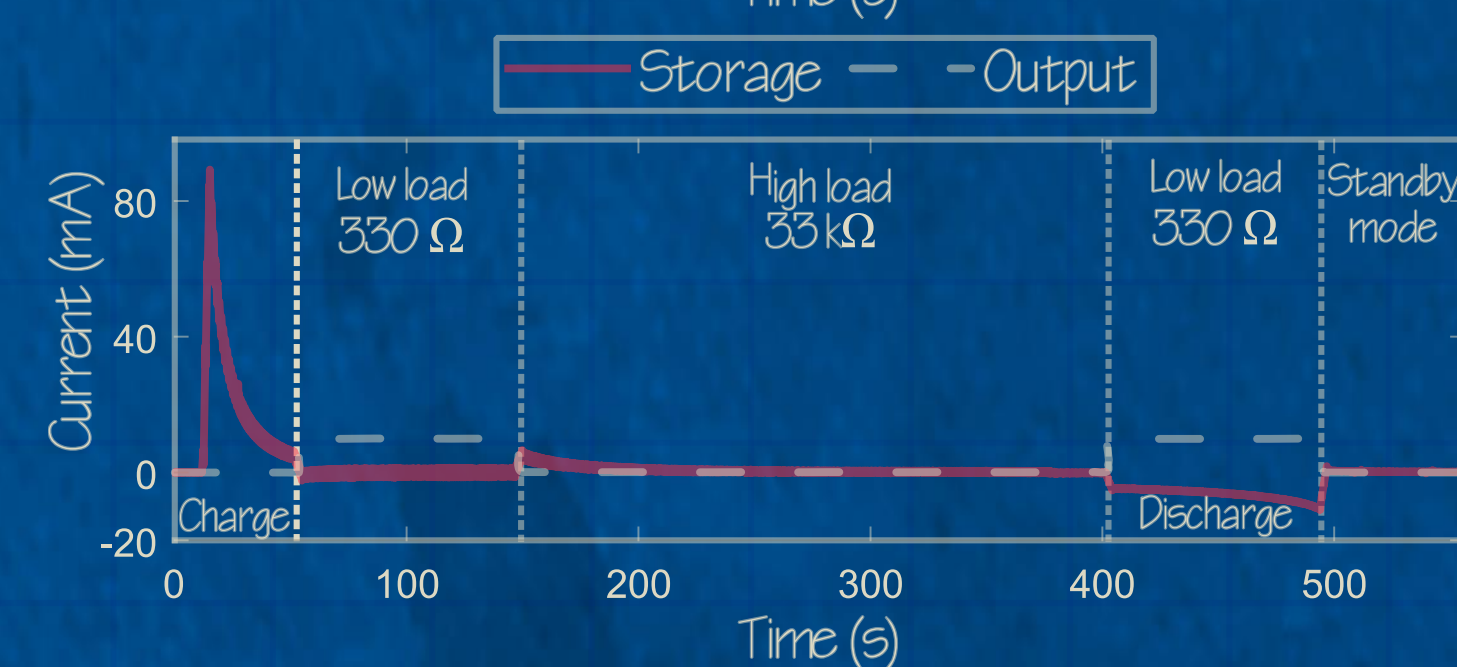
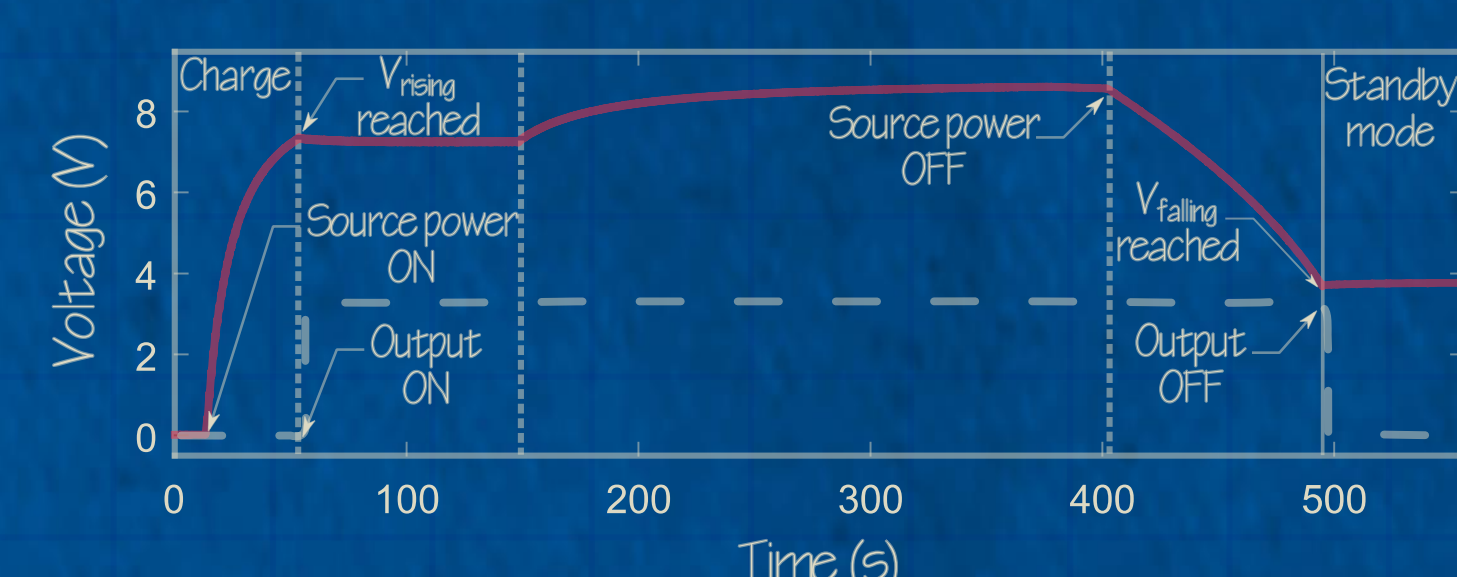
AC/DC buck converter with high hysteresis output activation set by resistors

- Voltage input: ± 20 V
- Current input: ± 50 mA
- Voltage output: 1.8 V to 3.6 V
- Current output: 160 mA max

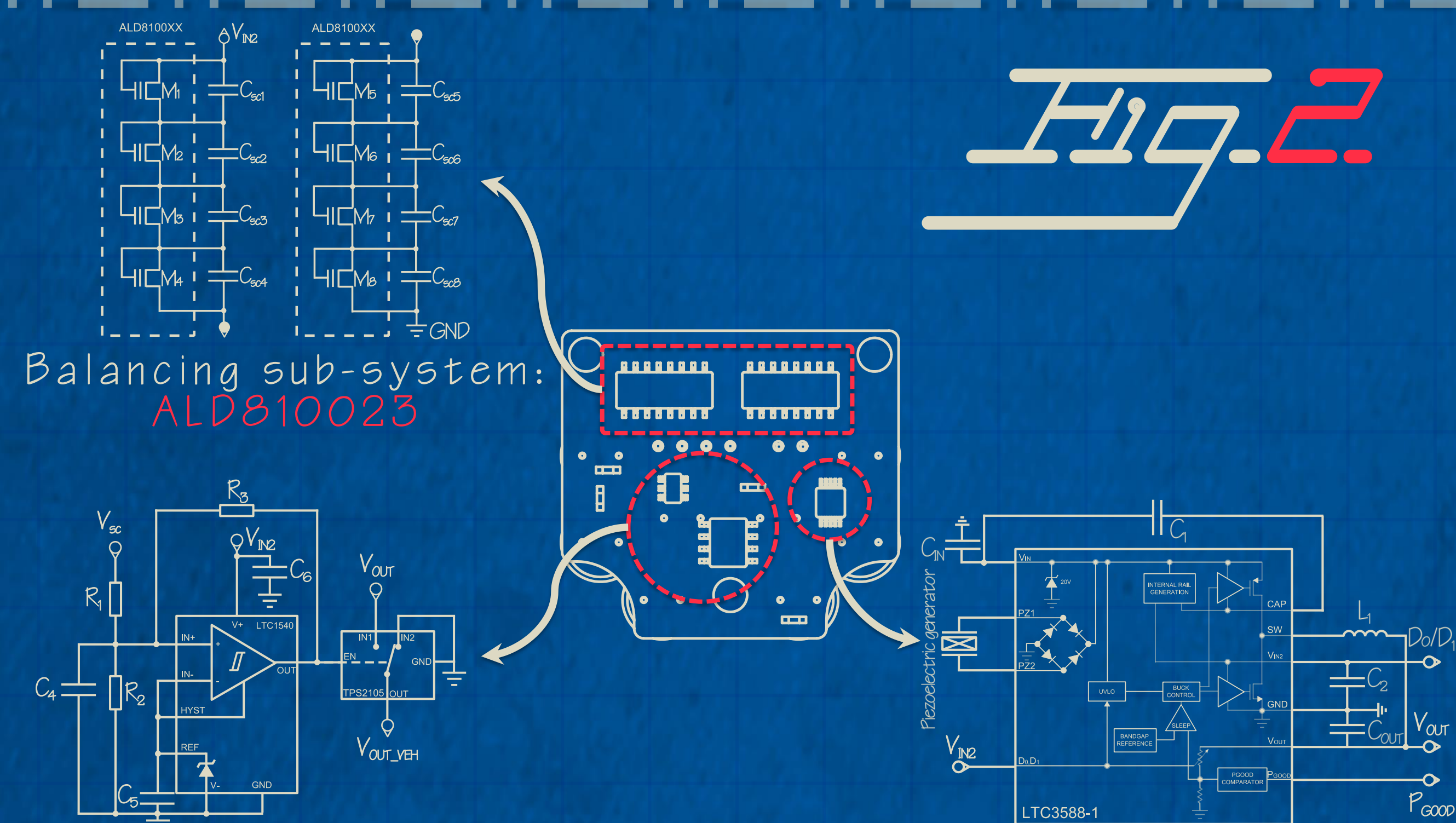
- Supercapacitors: 125 mF, 21.6 V
- Voltage equilibrium: 2.3 V

- $V_{rising}$ : 7.36 V
- $V_{falling}$ : 3.28 V
- Usable energy: 2.71 J

- Global efficiency: 80.2 %
- Maximum usable energy: 24.3 J



Overall operation: function generator source and resistive charge



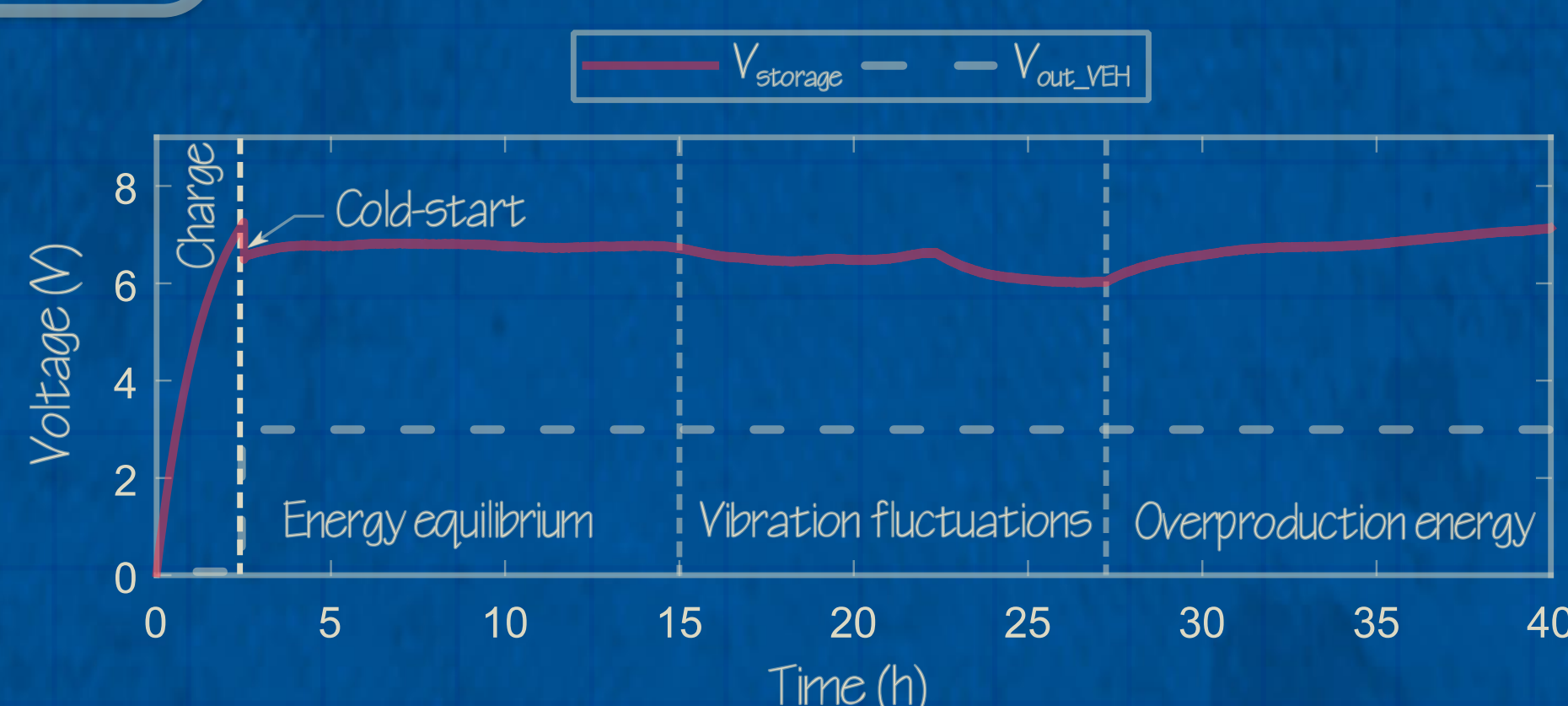
Start energy tuning: LTC1540 + TPS2105

## Results & Discussion

Phase	Energy	Duration	Peak power
Initialisation	389.4 mJ	311 s	180.8 mW
Meas. & Trans.	3.2 mJ	110 ms	231.2 mW
Sleep	3.8 mJ	46.9 s	87.45 mW

WSN's supply voltage: 3.3V

WSN JN5148 Operation phases characteristics



WSN JN5148 supply by VEH: long duration test

With very simple tunable linear piezoelectric generator and reliable components from the market, we are able to harvest and store energy in an efficient way in order to supply sensors.

The high amount of stored energy can compensate vibration source fluctuations.