



HAL
open science

Nanocrystals FAU-X monoliths as highly efficient microreactors for cesium capture in continuous flow

Youcef Didi, Bilel Said, Matthieu Micolle, Thomas Cacciaguerra, Didier Cot, Amine Geneste, François Fajula, Anne Galarneau

► **To cite this version:**

Youcef Didi, Bilel Said, Matthieu Micolle, Thomas Cacciaguerra, Didier Cot, et al. Nanocrystals FAU-X monoliths as highly efficient microreactors for cesium capture in continuous flow. *Microporous and Mesoporous Materials*, 2019, 285, pp.185-194. 10.1016/j.micromeso.2019.05.012 . hal-02138025

HAL Id: hal-02138025

<https://hal.science/hal-02138025>

Submitted on 25 Nov 2020

HAL is a multi-disciplinary open access archive for the deposit and dissemination of scientific research documents, whether they are published or not. The documents may come from teaching and research institutions in France or abroad, or from public or private research centers.

L'archive ouverte pluridisciplinaire **HAL**, est destinée au dépôt et à la diffusion de documents scientifiques de niveau recherche, publiés ou non, émanant des établissements d'enseignement et de recherche français ou étrangers, des laboratoires publics ou privés.

Nanocrystals FAU-X monoliths as highly efficient microreactors for cesium capture in continuous flow

Youcef Didi ^a, Bilel Said ^a, Matthieu Micolle ^a, Thomas Cacciaguerra ^a, Didier Cot ^b, Amine Geneste ^a, Francois Fajula ^a, Anne Galarneau ^{a*}

^a Institut Charles Gerhardt Montpellier, UMR 5253 CNRS - Univ Montpellier - ENSCM, ENSCM, 240 avenue du Professeur Emile Jeanbrau, 34 296 Montpellier Cedex 5, France.

^b IEM (Institut Europeen des Membranes), UMR 5635 CNRS - Univ Montpellier - ENSCM, Univ Montpellier,

*Corresponding author: E-mail address: anne.galarneau@enscm.fr (A. Galarneau)

ABSTRACT: The performances of binderless FAU-X monoliths (0.5 x 3 cm) build of nanocrystals featuring hierarchical trimodal porosity (micro-/meso-/macroporosity) in decontamination Cs-containing effluents have been evaluated. They have been compared to those obtained with newly synthesized FAU-X particles (1 mm) build with nanocrystals. Data have been confronted to those recently reported for a benchmark reference Cs⁺ adsorbent Sorbmatech®, based on copper hexacyanoferrate nanoparticles (15 nm) immobilized into mesoporous silica particles (250-500 μm) (Cu-HCF@SiO₂). FAU-X monoliths show high rate of adsorption in batch in less than 2 min, much faster than Cs⁺ adsorption in FAU-X particles (60 min). This result highlights the importance of a homogeneous macropore network in adsorbents to enhance mass transport and access to the zeolite active sites. FAU-X monoliths with 20 μm macropore diameter have been used in continuous flow experiments for sequestering Cs⁺ (0.5 mmol/L) in mineral drinking water containing competing cations (Ca²⁺, Mg²⁺, Na⁺, K⁺) with flow rates of 0.5 to 1 mL/min, corresponding to Darcy rates of 1.5 – 3 m/h. FAU-X monoliths are very efficient for Cs⁺ removal and show ideal steep breakthrough curves characteristic of fast diffusion. FAU-X monoliths are as excellent as Cu-HCF@SiO₂ and could represent an alternative adsorbent for safer processes, avoiding the handling of powders or particles. Above all, this study reveals the unique hydrodynamic behavior of FAU-X monoliths and opens the route for process intensification using FAU-X in continuous flow.

KEYWORDS: 13X; binderless FAU-X; Cs adsorption; monolith; water treatment.

1. Introduction

Zeolites are excellent cation-exchange adsorbents. Zeolites with Si/Al ratio of 1 as LTA or close to 1 as FAU-X ($1 < \text{Si/Al} < 1.5$) have the highest exchange capacity with 5.4 and 4.8 meq/g, respectively. One interesting application of zeolites is the capture of radioactive ions coming from management of effluents produced by nuclear industry or from nuclear accidents such as contaminated sweet and sea waters after Fukushima disaster. There is a substantial demand for efficient methods to decontaminate the radionuclide-contaminated water, to maintain captive the contamination into an adsorbent easier to manage and to decrease the amount of contaminated adsorbents to be stored. ^{137}Cs and ^{90}Sr are among of the most abundant and hazardous radionuclides because they are found in many types of wastes and have a relatively long half-life (30 years). Previously, we have shown that LTA monoliths with hierarchical macro-/meso-/microporosity with uniform and homogeneous macropore networks, which skeleton is built of nanocrystals [1] were excellent for Sr^{2+} capture in continuous flow with 4200 bed volumes (BV) efficiently treated at a Darcy flow rate of 1 m/h [2]. This result highlights the positive impact of multiscale pore architecture engineering of a zeolitic adsorbent for process intensification: macropores allow uniform mass transport of solutes with low pressure drop [3] while mesopores lead to faster ionic transport [4] and more efficient crystal use, both in batch and flow modes. LTA monoliths offer the possibility to develop safer processes, with no powder to handle, and to decrease the volume of adsorbents to store. LTA has been demonstrated to be the most selective zeolite for Sr^{2+} adsorption with the highest cation-exchange capacity [5]. However for Cs^+ adsorption for sequestering radionuclides, many adsorbents as zeolites (CHA, MOR, FAU-X) and essentially hexacyanoferrates (HCF)-based adsorbents have been tested, all showing advantages and drawbacks [6].

Among zeolites the most used for selective extraction of Cs^+ is chabazite (CHA) [7]. Featuring $\text{Si/Al} = 1.5$, CHA also known as Hershelite, has a high selectivity towards Cs^+ ($\text{Cs}^+ > \text{K}^+ > \text{Na}^+ > \text{Li}^+$, $\text{Ba}^{2+} > \text{Sr}^{2+} > \text{Ca}^{2+}$, Mg^{2+}) with an exchange capacity of 2.4 meq/g, which is higher than other tested zeolites as stilbite and heulandite [8]. However, the kinetics of adsorption are quite slow and maximum capacities of adsorption were reached in 30 min for

CHA (particles grinded between 150 – 355 μm). FAU-X is also selective for Cs^+ ($\text{Ag}^+ \gg \text{Cs}^+ > \text{K}^+ > \text{Na}^+ > \text{Li}^+$) and will be tested in this study for Cs^+ capture in mineral drinking water containing many competing ions. FAU-X possesses a tridimensional network build with two kinds of cages: sodalite cages and supercages. A supercage has a spherical geometry and comes from a building of 8 sodalite cages linked by hexagonal prisms. The supercage diameter is 1.3 nm. The access to the supercage is through 12 windows of 7.4 nm diameter. The cations occupy three positions in FAU-X. Sites I and I' are on the hexagonal prism faces between the sodalite cages. They can contain up to 16 Na^+ (1 per each 16 prims or 2 per each 8 sodalite cages). Sites II and II' are on the opening of the supercage near to the 6-ring sodalite cage and can be occupied by 32 Na^+ . Sites III are on the walls of the supercage and can accept up to 37 Na^+ ; these cations are in constant motion. The Na^+ cations in sites II and III (in the supercage) are the most accessible and will be first exchanged [9,10]. FAU-X zeolites possess 192 Al and Si tetrahedra per unit cell and for $\text{Si/Al} = 1.26$ the general formula is $\text{Na}_{85} [(\text{AlO}_3)_{85}(\text{SiO}_2)_{107}]$, 264 H_2O with 3 $\text{H}_2\text{O/Na}^+$. The theoretical cation-exchange capacity (CEC) is 4.83 meq/g. However the 16 Na^+ in sodalite cages are not exchangeable by Cs^+ , which decreases the theoretical CEC to 3.92 meq/g. Furthermore, when 40% of Na^+ are exchanged, the selectivity of FAU-X changes to $\text{Ag}^+ \gg \text{Na}^+ > \text{K}^+ > \text{Cs}^+ > \text{Li}^+$ [10]. This leads to a decrease of theoretical CEC to 1.93 meq/g. Higher Si/Al ratio as for FAU-X with $\text{Si/Al} = 1.5$ results in a lower of CEC (1.66 meq/g).

FAU-X showed the highest capacity of Cs^+ adsorption in radioactive contaminated water among zeolites in the following range: FAU-X > LTA > MOR > ZSM-5 [11]. The rate of adsorption is quite slow as the maximum uptake is reached in 50 min for commercial zeolites (grinded in between 250 – 300 μm). FAU-X, LTA and MOR have been used to decontaminate real radioactive effluents in continuous flow. Zeolites were inactive in one effluent and active in another one, with the best efficient adsorption for MOR [11]. Zeolites are therefore effluents dependent. Among LTA, P, FAU-X, FAU-Y, MOR zeolites, MOR has shown the highest selectivity for Cs^+ with no correlation with the cationic exchange capacity [5]. Natural MOR has been used as inexpensive Cs^+ adsorbate in Fukushima and tested to form a glassy phase at high temperature (1000 $^\circ\text{C}$ or 900 $^\circ\text{C}$ with Na_2CO_3) for long-term storage [12]. Zeolites have been proposed to be used in series with columns filled with HexaCyanoFerrate (HCF) as $\text{K}_2\text{FeCu}(\text{CN})_6$ (Cu-HCF) immobilized on polymeric polyacrylic fibers to reach a high factor of decontamination [13]. However polymers have revealed stability problems under irradiation at the opposite of zeolites or inorganic materials.

Cu-HCF is the most selective material to extract Cs^+ with an exchange capacity of 0.75 meq/g for micronic particles and 1.2 meq/g for nanoparticles featuring fast kinetics [14]. However due to their small grain size they cannot be used in fixed bed columns because of pressure loss and clogging. Their slow adsorption kinetics in micronic powder form is also problematic for column-based processes. To overcome these drawbacks HCF have been immobilized on different supports [6,15]. As an example, Cu-HCF has been adsorbed of cotton fibers of 1 μm wound around Inox tubes, which allowed to treat efficiently contaminated seawater in Australia [16]. Recently, nanoparticles of Cu-HCF have been immobilized in silica particles (250 – 500 μm) and have revealed fast Cs^+ adsorption kinetics in batch in less than 5 min [17] and in continuous flow with steep breakthrough curves [18] with an exchange capacity of 0.2-0.3 meq/g. These new adsorbents $\text{K}_2\text{FeCu}(\text{CN})_6@\text{SiO}_2$ (Cu-HCF@ SiO_2) with excellent properties towards Cs^+ decontamination in flow processes are developed by CEA and Orano and commercialized by CTI (France) under the name Sorbmatech®. Data recently reported for this material (Cu-HCF@ SiO_2) [17,18] will be confronted to those obtained during the present study.

By modeling, it was demonstrated the importance of the shaping of the adsorbents for cations capture. Monolithic structures with hierarchical porosity are highly recommended as perspective materials for efficient cations sequestering: with macropores for flow through processes, mesopores for a better access to the active phase, which should feature micropores for better sequestering and shaped as nanoparticles with the smallest size as possible for a maximum use of its adsorption capacity [14].

Very recently, we have succeeded in the synthesis of FAU-X monoliths built of nanocrystals [19] featuring a similar pore architecture as LTA monoliths [1,2]. These FAU-X monoliths were obtained by a double pseudomorphic transformation of silica monoliths resulting from a combination of spinodal decomposition and sol-gel process leading to adjustable macropore diameter between 2 and 20 μm . This kind of silica monoliths functionalized by different active phases and other monoliths as TiO_2 [20] have demonstrated high potentiality for process intensification in catalysis and in adsorption with higher productivity in comparison to packed-bed materials [21]. For FAU-X monoliths synthesis, silica monoliths were first transformed into silica-alumina monoliths at low NaOH concentration and the resulting silica-alumina monoliths were then transformed into FAU-X monoliths at high NaOH concentration [19]. FAU-X monoliths feature adjustable macropores (from 2 to 20 μm , similarly as parent silica monoliths) with a macropore volume of 1 mL/g, a secondary porosity (30 – 1000 nm) of 0.4 mL/g in between nanocrystals and FAU-X

nanocrystals with two populations of sizes 100/200 - 400/500 nm. These monoliths present therefore all the characteristics for process intensification as ionic adsorbents.

The hierarchical structures of FAU-X monoliths with 3 levels of porosity composed of nanocrystals should be highly suitable for fast kinetics in adsorption processes, as demonstrated by modeling [14]. In this study, Cs^+ adsorption has been performed in batch and in continuous flow using deionized and mineral drinking waters containing competing cations. The adsorption properties of FAU-X monoliths featuring nanocrystals will be compared to those of FAU-X monoliths featuring microcrystals and FAU-X particles (1 mm) built with nanocrystals. Data will be confronted to those reported recently in literature for the Sorbmatech® benchmark material ($\text{K}_2\text{FeCu}(\text{CN})_6$) immobilized in silica particles of 250-500 μm , hereafter Cu-HCF@SiO₂ [15,17,18]

2. Materials and methods

2.1. FAU-X monoliths synthesis

First silica monoliths have been prepared. Tetraethylorthosilicate (TEOS, Aldrich) (20 g) is left at -19°C for 1 h. In parallel, water (24.560 g) and then (2.313 g) nitric acid (68%) are added in a 100 mL Erlenmeyer. The mixture is stirred for 5 min at room temperature. Polyethylene oxide (Sigma) (PEO 20 kDa for Monolith-FAU-X-1 and PEO 35 kDa for Monolith-FAU-X-2) (2.534 g) is added to the mixture and stirred at room temperature until having complete dissolution of the polymer (around 15 min). The mixture is left 15 min at -19°C in the freezer to cool down the solution without freezing. The flask is then placed in an ice bath and stirred. TEOS (coming from the freezer) is directly added to the slurry and the solution is stirred for 30 min at 500 rpm to homogenize the mixture and obtain a translucent solution. The final composition of the mixture in molar ratio is: 1 Si / 0.60 EO unit / 0.26 HNO_3 / 14.21 H_2O . Polyvinyl chloride (PVC) tubes of 8 mm diameter and 10 cm length are closed on one side with a cap, sealed with parafilm and kept at -19°C in the freezer. The tubes are taken from the freezer and filled with the mixture of the ice bath. The tubes are then closed by caps and sealed with parafilm and left in water bath at 40°C for 3 days. The phase separation and the sol-gel process take place during this time. Monoliths are then removed from the tube molds and placed in 1 L water bath at room temperature. Water is changed every 30 minutes until reaching a neutral pH (~4 washings are necessary). The monoliths are then immersed in 1 L aqueous ammonia (0.1 M) in a polypropylene bottle and left in an oven at 40°C for 24 h. Resulting monoliths are placed in a water bath and water is changed every

30 min until neutral pH. The monoliths are then dried at room temperature during 1 night and calcined at 550°C for 8 h (with a heating rate of 2°C/min from 25 to 550°C) under air to remove remaining PEO. Silica monoliths of 6 mm diameter and 10 cm length have been obtained and have been cut at the desired lengths (3 or 5 cm) with a knife for the further pseudomorphic transformations.

Secondly, silica-alumina monoliths have been prepared. Silica-alumina monoliths are obtained by the pseudomorphic transformation of silica monoliths in mild basic medium ([NaOH] = 0.24 M) by adding a source of alumina (NaAlO₂, Carlo Erba) in the synthesis. The synthesis composition is given for 2 calcined silica monoliths of 5 cm length and 6 mm diameter (800 mg). In a beaker of 50 mL, 0.074 g of NaOH is dissolved in 7.656 g of water and 1.224 g of sodium aluminate (NaAlO₂) is added and stirred for 15 min. The molar composition of the system is: 1 SiO₂/ 0.14 NaOH/ 1.12 NaAlO₂/ 32 H₂O. The silica monoliths are placed on the bottom of an autoclave (250 mL) with flat base and are impregnated with the basic alumina solution. The autoclave is placed in an oven at 40 °C for 20 h. Monoliths are then recovered and put in a water bath (1 L) at room temperature. Water is changed every 30 min until reaching a neutral pH (~4 washings). Monoliths are then dried at 80 °C for 24 h and calcined at 550°C for 8 h under air.

Thirdly, silica-alumina monoliths were transformed into FAU-X monoliths. The pseudomorphic transformation of silica-alumina monoliths into FAU-X monoliths is performed at high NaOH concentration [NaOH] = 2.19 M. In a beaker of 20 mL, 1.158 g NaOH is dissolved in 13.189 g H₂O. The solution is stirred for 15 min. The pH of the solution is 14.0. Two silica-alumina monoliths (Al/Si = 0.25) of 4 cm length, mass of 0.699 g, are placed at the bottom of a flat stainless autoclave (250 mL). The monoliths are impregnated slowly with the NaOH solution. The autoclave is then placed in an oven at 40 °C for 4 days and then at 100 °C for 24 h. The autoclave is then cooled in water bath. The excess of solution (pH 14.0) is removed with a Pasteur pipette. The monoliths are then placed in 1 L of water. Water is changed every hour until to reach a pH of 8 (~4 washings). The monoliths are then dried at 40 °C for 16 h and calcined with a heating rate of 0.5 °C/min until 350 °C and maintained at 350 °C for 8 h.

Another FAU-X monolith (Monolith FAU-X-3) has been prepared without the aging step at 40 °C for 4 days, by heating the reaction mixture directly at 100 °C for 24 h. The skeleton of this monolith is build by an association of microcrystals (1-1.5 μm).

2.2. FAU-X particles synthesis

The same protocol as for monoliths was applied to commercial mesoporous silica particles of 1 mm diameter (W432, Davisil) featuring a surface area of $S_{\text{BET}} = 356 \text{ m}^2/\text{g}$, a mesopore diameter of 12.6 nm, a mesopore volume of 1.14 mL/g. Silica particles (600 mg) were put in an autoclave and impregnated with an alkaline solution prepared with 0.056 g NaOH, 5.742 g H_2O and 2.083 g NaAlO_2 . The autoclave was maintained at 40 °C for 20 h. The suspension was then filtered and washed with water until pH 7 (4 washings), dried at room temperature overnight and calcined at 550°C for 8 h (2 °C/min). The transformation of silica particles into silica-alumina particles corresponds to the molar ratios: 1 SiO_2 / 1.12 NaAlO_2 / 32 H_2O / 0.14 NaOH. Silica-alumina particles have a final molar ratio of Al/Si = 0.22. These silica-alumina particles will be used to synthesize FAU-X particles named Particles FAU-X-1 featuring low aggregation of nanocrystals.

To increase the amount of aluminium in the particles a slight modification of the protocol was performed by using a larger amount of NaAlO_2 (1 SiO_2 / 2.54 NaAlO_2 / 32 H_2O / 0.14 NaOH) and a small amount of tetrapropylammonium gel, which synthesis is described elsewhere [19]. Silica-alumina particles have a final molar ratio Al/Si = 0.32. These silica-alumina particles will be used to synthesize FAU-X particles named Particles FAU-X-2 featuring high aggregation of nanocrystals.

The same protocol of transformation of silica-alumina particles into FAU-X particles was used for the two kinds of silica-alumina particles. Silica-alumina particles (762 mg) were put in an autoclave with a basic solution prepared with 0.099 g NaOH and 11.321 g H_2O and heated at 40 °C for 4 days and at 100 °C for 24 h. The particles were washed until pH 8, dried at 40 °C overnight and calcined at 350 °C for 8 h (0.5 °C/min).

2.3. Materials characterization

X-Ray Diffraction (XRD) patterns of the monoliths were performed using a Bruker D8 Advance diffractometer with a Bragg-Brentano geometry and equipped with a Bruker Lynx Eye detector. XRD patterns were recorded in the range 4-50° (2 θ) to identify zeolite peaks. The angular step size was of 0.0197° and the counting time of 0.2 s per step.

The textural properties of the materials were determined from the N_2 adsorption/desorption isotherms at 77 K measured on a Micromeritics Tristar 3000 apparatus. The samples were previously outgassed in vacuum at 250 °C for 12 h. Micropore volumes of FAU-X were determined at $p/p_0 = 0.1$ when all micropores are filled.

Monoliths morphology was studied using a Hitachi S-4800 I FEG-SEM Scanning Electron Microscope at “Plateau Technique de l’IEM laboratoire du Pole Chimie Balard Montpellier”.

Energy Dispersive Spectroscopy (EDS) chemical analyses (in atomic %) were performed on a FEI Quanta 200F (15 kV) apparatus.

2.4. Cs capture in pure and mineral water

2.4.1. Tests in batch with CsOAc in mineral water.

To evaluate the kinetics of adsorption of the materials a solution of cesium acetate [CsOAc] = 3.59 mmol/L has been prepared in mineral drinking water (pH = 7.5) giving a pH of 7.9. This mineral drinking water (Evian, France) is commercially available and contains several cations: [Ca²⁺] = 2 mmol/L, [Mg²⁺] = 1 mmol/L, [Na⁺] = 0.2 mmol/L, [K⁺] = 0.02 mmol/L. For batch experiments, FAU-X monoliths have been grinded in between 250 and 500 µm. FAU-X particles have been used without grinding.

Different tubes containing 20 mg of adsorbents in 40 mL of CsOAc solution (0.5 g/L) were stirred in a rotating stirrer at 60 rpm (Fig. S1). Aliquots of supernatant were collected periodically using a syringe equipped with a 0.2 µm filter in order to avoid artifact coming from solid particles. The amount of Cs⁺ present in the supernatants was analyzed by atomic emission spectroscopy. After 24 h stirring, the tubes were centrifuged and the resulting powders were dried without washing to be analyzed by EDS.

2.4.2. Tests in batch with CsNO₃ in pure and mineral water.

To evaluate the capacity of adsorption as a function of Cs concentration, similar tests as above were performed with cesium nitrate at different concentrations 0.50 and 0.74 mmol/L in deionized water (pH = 6.5) and mineral water (pH = 7.5) with different amount of adsorbents 0.5 and 1 g/L.

2.4.3. Tests in continuous flow with CsOAc in mineral water.

The monolith FAU-X-2 of 0.5 cm diameter and 2.4 cm length (m = 0.181 g, volume = 0.471 cm³, density = 0.60 g/cm³) has been cladde with 2 Inox tubes with a heat shrinkable gain (DERAY PTFE 2 : 1, Castello France) at 350 °C for 5 min and connected to a HPLC pump through swageloks (Fig. S2). A solution of CsOAc of initial concentration C₀ = 0.5 mmol/L in mineral water was first flown through the monolith with a flow rate of 0.5

mL/min, corresponding to a linear Darcy rate of 1.52 m/h. The Darcy rate is a lineic rate as the ratio of the flow rate (mL/min) and the surface area of the column (here the surface area of the monolith). The solution was collected in a beaker and sampled every 30 min for 10 min until 700 min. Cs⁺ content was analyzed by atomic emission spectroscopy.

The monolith was regenerated with a NaCl solution 2 mol/L at pH 8 (pH adjustment was done by adding a small amount of sodium acetate (0.1% v/v)). The NaCl solution was flow through the monolith at a flow rate of 0.5 mL/min for 10 h to recover the Na-FAU-X form. A second adsorption with CsOAc solution was performed with a flow rate of 0.5 mL/min as for the first adsorption. A second regeneration was performed with the NaCl solution at a flow rate of 0.25 mL/min for 87 h. A third adsorption with CsOAc solution was performed with a flow rate of 0.5 mL/min as for the first and second adsorptions. A third regeneration was performed with NaCl solution at a flow rate of 0.5 mL/min for 12 h. A fourth adsorption with CsOAc solution was performed at higher flow rate of 1.0 mL/min corresponding to 3.04 m/h.

2.4.4. Analysis of Cs⁺ solution by emission atomic spectroscopy.

Cs⁺ solutions have been analyzed by atomic emission spectroscopy with the band at 852.1 nm with a flame spectrometer Varian spectra 220. Calibration curves were performed with Cs⁺ solutions (CsOAc and CsNO₃) of different concentrations from 20 to 100 ppm (mg/L). Analyses of Cs⁺ content in supernatants were done using the Beer-Lambert law.

3. Results and discussion

3.1. Adsorbents characterization

Recently, a new synthesis of FAU-X monoliths featuring homogeneous flow-through macropores (Fig. 1-3) ideal for continuous flow processes with high mass transfer has been disclosed [19]. FAU-X monoliths are obtained as cylinders of 0.5 cm diameter and 3 cm length. FAU-X monoliths present a skeleton build by an aggregation of nanocrystals, which are highly suitable to improve diffusion and access to the active sites of zeolites. The FAU-X nanocrystals inside the monoliths present two populations of different sizes: 100-200 nm and 400-900 nm (Fig. 1, Table 1). XRD patterns (Fig. 2) are characteristic of well-crystallized FAU-X zeolite, free of amorphous or extra crystalline phases. Such materials should allow increased adsorption capacities in comparison to zeolite monoliths or commercial zeolite particles shaped by using inorganic binders (10 – 30 wt%). The nitrogen

adsorption/desorption isotherms of FAU-X monoliths are of type I characteristic of microporous materials with a micropore volume around 0.30 mL/g (Fig. 3). At high pressure ($p/p_0 > 0.6$), the isotherms show the presence of a secondary large porosity (pore diameter > 10 nm) due to the space in between the nanocrystals. This secondary porosity has been analyzed by mercury porosimetry and corresponds to pores usually in between 30 to 1000 nm centered at 300 nm amounting to a secondary pore volume of around 0.40 mL/g [19]. The macropore diameter is adjustable between 2 and 20 μm . The macropore volume stands around 1 mL/g. The density is around 0.56 g/cm³. These FAU-X monoliths are obtained by a double pseudomorphic transformation of silica monoliths into silica-alumina monoliths ($0.25 < \text{Al/Si} < 0.40$) and then into FAU-X monoliths ($\text{Si/Al} \sim 1.25$) [19]. Two FAU-X monoliths built with nanocrystals with different macropore diameters of 2 and 20 μm , named Monolith-FAU-X-1 and 2, respectively, have been synthesized to evaluate their Cs⁺ adsorption properties from aqueous solutions. Their textural characteristics are disclosed in Table 1.

The same protocol was successfully applied to the pseudomorphic transformation of silica particles of 1 mm. Parent silica particles featuring mesopore diameters of 13 nm, a specific surface area of $S_{\text{BET}} = 356 \text{ m}^2/\text{g}$ and a mesopore volume of 1.14 mL/g were transformed into silica-alumina particles (mesopore diameter 14 nm, $S_{\text{BET}} = 170 \text{ m}^2/\text{g}$, mesopore volume of 1.67 mL/g). Then silica-alumina particles were transformed into FAU-X particles (Fig. 4) of the same size (1 mm) as the initial silica parent particles. Two kinds of FAU-X particles have been obtained depending on the Al/Si ratio of the parent silica-alumina particles. For silica-alumina particles with Al/Si = 0.22, the FAU-X particles are built with nanocrystals of 100-200 nm / 400-500 nm with a low state of aggregation leading to pores (100 – 400 nm) in between the aggregates. This material is named “Particles FAU-X-1” (Fig. 4, Table 1). For parent silica-alumina particles with Al/Si = 0.32, FAU-X particles are built with nanocrystals of 500-700 nm with a high state of aggregation, this material is named “Particles FAU-X-2” (Fig. 4, Table 1). The increase in nanocrystals size by increasing Al/Si ratio in the silica-alumina particles is in agreement with observations in literature for FAU-X [22]. Both kinds of FAU-X particles feature the XRD pattern of well-crystallized FAU-X (Fig. S3) and nitrogen isotherms similar to FAU-X monoliths with micropore volume around 0.30 mL/g (Fig. S4, Table 1).

The Cu-HCF@SiO₂ benchmark material used in literature [17,18] has a general chemical formula of $\text{K}_{1.16}\text{Cu}_{1.42}\text{Fe}(\text{CN})_6 \cdot 59 \text{ SiO}_2$ corresponding to a theoretical cation-exchange capacity of 0.29 meq/g. Its textural characteristics are the following: mesopore volume of 0.57 mL/g, mesopores diameter opening of 9 nm, specific surface area of 283 m²/g

and nanocrystals size of 15 nm [17]. The density of Cu-HCF@SiO₂ is around 0.45 g/cm³. This adsorbent has revealed high performance in continuous flow for Cs⁺ sequestering from Cs⁺ in solution in mineral water containing competitive cations (K⁺, Na⁺, Mg²⁺, Ca²⁺) [18].

3.2. Cesium adsorption in FAU-X monoliths and particles in batch

3.2.1. Cesium capture from CsOAc solution in mineral water in batch

FAU-X is known to have the best stability at pH around 8. The mineral drinking water (pH 7.5) used in this study is the same as the one used in literature to evaluate the adsorption capacity of the benchmark material Cu-HCF@SiO₂ in batch [17] and in flow [18]. This mineral water has been chosen as it is considered to be the more constant one in composition among mineral waters. Cesium acetate (CsOAc) was chosen as salt to increase the pH the solution close to 8. For a solution of [Cs⁺] = 3.59 mmol/L with 0.5 g/L of FAU-X, the final pH was 7.9. This corresponds to an amount of Cs⁺ per mass of adsorbent of 7.18 meq/g for a theoretical cation-exchange capacity for FAU-X of 3.92 meq/g or 1.93 meq/g if more than 40% of Na⁺ are exchanged. The mineral water contains different cations [Ca²⁺] = 2 mmol/L, [Mg²⁺] = 1 mmol/L, [Na⁺] = 0.2 mmol/L, [K⁺] = 0.02 mmol/L, which are competing with Cs⁺ adsorption. This amount of competing cations corresponds to an amount for each cations per mass of adsorbent of 8, 4, 0.4, 0.04 meq/g, respectively. For batch experiments, FAU-X monoliths have been grinded into particles of 250 – 500 µm to get similar sizes as benchmark Cu-HCF@SiO₂.

FAU-X monoliths show very fast kinetics of cation-exchange, as the maximum Cs⁺ adsorption capacity is reached in less than 2 min (Fig. 5). This property is of great importance for continuous flow processes. Indeed, the higher is the adsorption rate, the higher will be the dynamic adsorption rate. This high rate results from the porosity of the monoliths allowing fast diffusion of Cs⁺ inside the zeolite. FAU-X monolith (Monolith FAU-X-1) featuring a Si/Al = 1.28 (Table 2) shows a maximum exchange capacity of 1.75 meq/g (Fig. 5). This result is in accordance with theoretical CEC of Cs⁺ for FAU-X 1.66 < CEC < 1.93 meq/g (for Si/Al from 1.5 to 1.25, respectively) with a cation-exchange capacity higher than 40% [10]. FAU-X monolith built of microcrystals (Monolith FAU-X-3, Si/Al = 1.46) shows a similar fast cation exchange in less than 2 min, but a lower maximum exchange capacity of 1.0 meq/g (not shown). No increase in adsorption capacities was observed during 24 h.

FAU-X particles (1 mm, Si/Al = 1.4-1.5) formed by aggregation of nanocrystals (Table 2) lead to slower kinetics with a maximum Cs⁺ adsorption capacity (1.0 meq/g)

reached in 30 - 60 min (Fig. 5). No changes in adsorption capacity were observed after 24 h in Cs^+ solution. FAU-X monoliths (nano- or microcrystals) demonstrate a much faster cation-exchange than FAU-X particles. This is attributed to the homogeneous network of large macropores in the monoliths, which enhances the transport to the active site of the zeolite. This highlights the importance of a hierarchical porosity in adsorbents for fast ion diffusion.

After 24 h in Cs^+ solution, the tubes containing the adsorbents were centrifuged, the supernatant solutions removed and the samples dried (without washing). After centrifugation the FAU-X particles featuring low aggregation of nanocrystals (Particles FAU-X-1) have been destroyed as a fine powder. Chemical analyses were performed on the dried solids (Table 2). The results show that most of Na^+ (92-93%) has been exchanged in FAU-X monoliths and FAU-X particles and that a high amount of Ca^{2+} has been adsorbed. The amount of Cs^+ (1.62 meq/g_{final}) in FAU-X monolith featuring nanocrystals (Monolith-FAU-X-1) is in agreement with the result obtained by measuring the remaining Cs^+ in solution (1.75 meq/g_{initial}). For both FAU-X particles and FAU-X monolith featuring microcrystals (Monolith-FAU-X-3) the amount of Cs^+ found in the solid (~1.85 meq/g) is significantly higher than the one determined from the remaining Cs^+ in solution (1.0 meq/g). This can be the result of some precipitation/occlusion of CsOAc salts on the solid during drying, as no washing was performed after centrifugation.

From the composition of the solids after drying (Table 2), the amount of the different cations present in the solid has been calculated and expressed as meq/g. The amount of cations present initially in solution corresponds to Cs^+ 7.2 meq/g, Ca^{2+} 8 meq/g, Mg^{2+} 4 meq/g, Na^+ 0.4 meq/g, K^+ 0.04 meq/g. For FAU-X monolith featuring nanocrystals, the amount of the different cations after Cs^+ adsorption corresponds to Cs^+ 1.6 meq/g, Ca^{2+} 6.4 meq/g, Mg^{2+} 0.7 meq/g, Na^+ 0.7 meq/g, K^+ 0.02 meq/g. This gives a total of 9.4 meq/g of cations in FAU-X monolith higher than the maximum theoretical CEC value (4.83 meq/g). As presumably no CsOAc has precipitated on this adsorbent, one explanation is that Ca(OAc)_2 salt has precipitated on the solid. Indeed, the solubility of Ca(OAc)_2 (0.4 kg/L) is lower than the one of CsOAc (9 kg/L). To reach the theoretical maximum CEC of FAU-X (4.83 meq/g), an amount equivalent to 4.6 meq/g of Ca^{2+} should have precipitated on the solid and 1.8 meq/g Ca^{2+} should be at exchange positions. For the other FAU-X adsorbents, with a less porous structure, both precipitations of CsOAc and Ca(OAc)_2 should occur.

3.2.2. Cesium capture from CsNO_3 solution in mineral water in batch

Batch experiments have been performed with solution of CsNO₃ in mineral water at different concentrations 0.50 and 0.74 mmol/g and 2 loadings of adsorbents 0.5 and 1 g/L, which correspond to an amount per g of adsorbent of 0.50, 0.74, 1.0, 1.48 meq/g. The CsNO₃ solution in mineral water has a pH of 7.9. The suspensions were stirred for 1 h before analyzing the Cs⁺ content of the filtered supernatants.

Cs⁺ adsorption capacity of FAU-X monoliths and particles increase from 0.35 to 0.70 meq/g with the increase of Cs⁺ in solution corresponding to an amount per g of adsorbents of 0.50 to 1.48 meq/g (Fig. S5). Adsorption isotherms have been drawn considering the remaining Cs⁺ in equilibrium with the solution after adsorption (Fig. 6). The equilibrium concentration expressed in meq/g (Fig. 6) will be similar to equilibrium concentration in mmol/L for adsorbents loadings of 1 g/L. Two main informations are contained in these curves: the slope at low Cs⁺ concentrations remaining in solution, which is linked to the selectivity of the adsorbents, a higher slope corresponds to higher selectivity towards Cs⁺, and the value of the plateau from isotherms curves corresponding to the maximum cation-exchange capacity. According to these data, the experimental adsorption capacity of FAU-X monoliths (for an initial amount of Cs⁺ in solution of 1.48 meq/g) is around 0.70 meq/g as for FAU-X particles featuring low nanocrystals aggregation and 0.65 meq/g for FAU-X particles featuring high nanocrystals aggregation.

To calculate the maximum adsorption capacities, the adsorption isotherms have been fitted with a Langmuir isotherm model. The Langmuir isotherm is most widely used for the adsorption of molecules or ions from a liquid solution [23]. The model is based on several basic assumptions: (i) the adsorption takes place at specific homogeneous sites within adsorbent; (ii) a molecule or an ion occupies one site; (iii) the adsorbent has a finite capacity for the adsorbate (at equilibrium, a saturation point is reached where no further adsorption can occur); (iv) all sites are identical and energetically equivalent (the adsorbent is structurally homogeneous).

The equation of Langmuir for the sorption of a single component, namely Cs⁺, is represented as follows [23]:

$$Q = \frac{Q_m K_L C_e}{1 + K_L C_e}$$

where Q (meq/g) is the adsorbed amount of Cs⁺ in the solid at equilibrium Cs⁺ concentration in the solution C_e (mmol/L), Q_m (mmol/g) the maximum adsorption capacity and K_L

(L/mmol) is a constant related to the equilibrium constant of adsorption and to the energy of adsorption [23,24]. The Langmuir isotherm parameters are evaluated through linearization of the Langmuir equation:

$$\frac{C_e}{Q} = \frac{1}{K_L Q_m} + \frac{1}{Q_m} C_e$$

Hence by plotting C_e/Q against C_e it is possible to obtain the value of Q_m from the slope and K_L from the intercept.

The Cs^+ adsorption isotherms in mineral water of FAU-X monoliths and particles follow the Langmuir isotherm model with a good correlation coefficient ($R^2 > 0.99$) (Table 3). The values of Q_m and K_L for the Langmuir equation are reported in Table 3. The maximum adsorption capacity for FAU-X monoliths is equivalent to FAU-X particles featuring low nanocrystals aggregation with $Q_m = 1.0$ meq/g, whereas the maximum adsorption capacity is slightly lower for FAU-X particles featuring high nanocrystals aggregation with a maximum capacity of 0.8 meq/g. The K_L constants are around 3-4 L/meq or L/mmol, which is comparable to the K_L constant obtained for Cs^+ adsorption in seawater with nanocrystals of mordenite ($K_L = 2.6$ L/mmol with $Q_m = 0.28$ meq/g) [25].

FAU-X monolith (Monolith FAU-X-1) featuring nanocrystals in the skeleton shows a lower maximum adsorption capacity (1.0 meq/g) with $CsNO_3$ solution in comparison to $CsOAc$ solution (1.75 meq/g), whereas similar maximum adsorption capacities (1.0 meq/g) were obtained for Monolith FAU-X-2 featuring microcrystals and FAU-X particles (Tables 2, 3). A hypothesis would be that some $Ca(OAc)_2$ precipitated by confinement in the secondary porosity of Monolith FAU-X-1 leading to less Ca^{2+} competing with Cs^+ to occupy the exchange sites of the zeolite, enabling a higher adsorption capacity of Cs^+ with $CsOAc$ solution than with $CsNO_3$ solution. For Cs^+ adsorption under flow conditions performed with $CsOAc$ solution (see below) no confinement will be possible. The adsorption isotherms obtained with $CsNO_3$ solution will be used to evaluate the adsorption capacity of FAU-X monoliths in contact with Cs^+ solutions. The adsorption isotherm shows that for an equilibrium concentration of $[Cs^+] = 0.5$ mmol/L (or 0.5 meq/g), the adsorption capacity of FAU-X monoliths will be 0.60 meq/g (Fig. 6). This will correspond to an adsorption capacity per volume of material of 0.36 meq/cm³. In literature [17,18] for the same Cs^+ equilibrium concentration, the adsorption capacity of Cu-HCF@SiO₂ was 0.20 meq/g, corresponding to an adsorption capacity per volume of material of 0.10 meq/cm³.

In batch in mineral water, FAU-X monoliths adsorb 3 times more Cs^+ in comparison to benchmark Cu-HCF@SiO_2 for a same volume of adsorbent.

3.2.3. Cesium capture from CsNO_3 solution in deionized water in batch

Adsorption experiments were also conducted with deionized water without competing cations with CsNO_3 solutions concentrations identical as previously: $[\text{Cs}^+] = 0.50$ and 0.74 mmol/g and adsorbents concentrations equal to 0.5 and 1 g/L (Fig. S6).

For FAU-X monoliths and particles, no plateau of Cs^+ adsorption capacity was reached with deionized water for the Cs^+ concentrations used in this section (Fig. 7). Cs^+ adsorption capacities of FAU-X monoliths and particles in deionized water are higher than 1.30 meq/g (Fig. 7, S6). The comparison of adsorption capacity in deionized water (Fig. 7) and in mineral water (Fig. 6) clearly shows the lower affinity of Cs^+ for FAU-X when competing cations as Ca^{2+} are present.

3.3. Cesium adsorption in FAU-X monoliths in continuous flow

Cs^+ adsorption under continuous flow was performed in similar conditions as the optimal ones described for Cu-HCF@SiO_2 in literature [18]: mineral water, $[\text{Cs}^+] = 0.5$ mmol/L, a column ratio length/diameter $L/D = 5$, a flow rate corresponding to a Darcy rate around 2 m/h. In such conditions, Cu-HCF@SiO_2 gave a steep breakthrough curve with an efficient adsorption capacity of 230 mL of solution efficiently treated (all Cs^+ being captured) per unit volume of column (1 cm^3), so 230 Bed Volume (BV) corresponding to 0.14 meq/g. An adsorption capacity at half-breakthrough curve of 250 BV (0.15 meq/g) has been obtained with a maximum dynamic capacity of 300 BV (0.18 meq/g). The diffusion rate in Cu-HCF@SiO_2 is large enough to achieve the maximum efficiency of the column. The dynamic capacity of this material represents 100% of its useful capacity, all exchangeable sites of the column are accessible [18].

FAU-X monoliths featuring nanocrystals have been chosen among all FAU-X adsorbents, as they give faster kinetics of adsorption together with the highest adsorption capacity in batch (Fig. 5). A first FAU-X monolith (similar to Monolith FAU-X-1) featuring 3 μm macropore diameter has been tested with $C_0 = [\text{CsOAc}] = 0.5$ mmol/L at a flow rate of 0.5 mL/min (corresponding to a Darcy rate of 1.52 m/h). Under the flow conditions, the pressure increased in the column and no analysis could be performed. A second FAU-X monolith (Monolith FAU-X-2, 0.5 cm diameter x 2.4 cm length, 181 mg, density 0.60 g/cm³) with

larger macropores of 20 μm diameter (Fig. 1-3, Table 1) has been synthesized and used in continuous flow.

Breakthrough curves were obtained by plotting the concentration of Cs^+ at the exit of the monolith (C) as a function of time (Fig. S7) or volume throughput (Fig. 8). Breakthrough curves are usually expressed in terms of normalized concentration defined as the ratio of effluent ion concentration to its inlet concentration C/C_0 as a function of effluent volume for a given bed volume (Fig. 8). The shape of the breakthrough curve and the breakthrough volume (or time) are the most important factors for determining the dynamics and the practical aptitude of the flow process. The shape of a breakthrough curve as a function of volume (or time) depends on many parameters such as the bed volume, the ratio bed diameter/bed height (which should be superior to 5, as demonstrated for Cu-HCF@SiO₂ [18]), the flow rate and the feed concentration C_0 . An ideal breakthrough curve would show an instantaneous jump in the effluent concentration from zero to the value of the feed concentration when the column capacity is reached. In case of a highly selective adsorbent, the adsorption zone is linear, perpendicular to the bed and in this ideal case the height of this front depends only on the initial concentration of the effluent and on the Darcy rate. A Darcy rate higher than 1 m/h is considered necessary for a representative experiment able to be scaled up at pilot and industrial scale.

First the Cs^+ solution has been flown through the FAU-X monolith at a flow rate of 0.5 mL/min (1.52 m/h) for 24 h to scale the experiment. The FAU-X monolith was regenerated with $[\text{NaCl}] = 2 \text{ mol/L}$ to recover the Na-FAU-X form. This NaCl concentration has been chosen as in a previous study concerning the capture of Sr^{2+} with LTA zeolites, we have noticed that the capacity of adsorption of zeolites decreases with the increase of Na^+ present in the solution and that no adsorption occurs for $[\text{Na}^+] = 1.6 \text{ mol/L}$ (Fig. S8). A second run of Cs^+ adsorption was conducted at a flow rate of 0.5 mL/min (1.52 m/h) and gave a vertical breakthrough curve (Fig. 8, Fig. S7) with an efficient adsorption capacity delay of 180 min corresponding to 191 BV and 0.25 meq/g. The capacity at half-breakthrough curve was 255 BV (0.33 meq/g). The FAU-X monolith has been regenerated and a third Cs^+ adsorption has been performed at a flow rate of 0.5 mL/min (1.52 m/h) giving the same results (Fig. 8, Table 4). The FAU-X monolith has been regenerated again and a fourth Cs^+ adsorption has been performed at a flow rate of 1 mL/min (3.04 m/h) giving the same breakthrough curve (Fig. 8, Table 4). The shapes of the breakthrough curves of FAU-X monolith build of nanocrystals are steep revealing the high diffusion of Cs^+ to the active sites of the zeolite due to the hierarchical nature of the porosity of the monolith, as it was observed

for LTA monoliths build of nanocrystals for Sr²⁺ capture [2]. Rates of cationic exchange have been calculated using the Thomas model [26,27] as previously done for Sr²⁺ adsorption in flow with LTA monoliths [2]. The Thomas model assumes a Langmuir isotherm with a pseudo-second order expression in order to calculate the residual adsorption capacity. The model ignores dispersive effects such as axial dispersion or dispersive mass transfer. The Thomas model is following the equation:

$$\frac{C_0}{C} - 1 = \exp\left(\frac{K_{th} Q_{bed} m}{F} - K_{th} C_0 t\right)$$

or for linearization:

$$\ln\left(\frac{C_0}{C} - 1\right) = \frac{K_{th} Q_{bed} m}{F} - K_{th} C_0 t$$

where C_0 (mg/L) is the initial Cs⁺ concentration (at the entrance of the monolith), C (mg/L) is the concentration of Cs⁺ at time t (min) at the exit of the monolith, K_{th} (L/mg/min) is the adsorption rate constant, m (mg) is the mass of the monolith, F (mL/min) is the flow rate and Q_{bed} (mg/g) is the maximum capacity of adsorption of the monolithic bed under dynamic conditions.

The K_{th} and Q_{bed} values (Table 4) were calculated from the slopes and the intercepts of the linear plots of $\ln(C_0/C - 1)$ against t (Fig. S7). From the regression coefficient ($R^2 > 0.989$), it can be concluded that the experimental data fitted well with Thomas model. An adsorption rate constant $K_{th} = 1.60 - 1.90$ mL/mg/min and a bed capacity of $Q_{bed} = 0.33 - 0.37$ meq/g were found. To know if the entire monolith has been used for the cation-exchange and if all exchangeable sites of the monolith are accessible, the dynamic capacity (0.37 meq/g) has to be compared with the “useful” capacity (or static capacity) corresponding to the experimental capacity in batch with an equilibrium Cs⁺ concentration (0.5 mmol/L or 0.5 meq/g in Fig. 6) equal to the feed concentration. The useful capacity of FAU-X monolith was 0.60 meq/g, which is higher than the dynamic capacity (0.37 meq/g) measured at 1.5 and 3 m/h, meaning that some exchangeable sites of FAU-X are not used under flow experiments. The dynamic capacity of FAU-X monoliths at the end of the step of the breakthrough curve represents 62% of its useful capacity.

The efficient Cs^+ adsorption capacity of FAU-X monoliths build of nanocrystals is 224 BV (0.29 meq/g), the half-breakthrough adsorption capacity 260 BV (0.34 meq/g) and the maximum dynamic adsorption capacity 296 BV (0.38 meq/g) for a solution of Cs^+ of 0.5 mmol/L in mineral water (with competing cations). Under similar conditions, the efficient Cs^+ adsorption capacity of Cu-HCF@SiO₂ benchmark material column was 230 BV (0.14 meq/g), the half-breakthrough adsorption capacity 250 BV (0.15 meq/g) and the maximum dynamic adsorption capacity 300 BV (0.18 meq/g) [18]. Whereas in batch the adsorption capacity of FAU-X monolith was 3 times higher than Cu-HCF@SiO₂, in continuous flow the dynamic adsorption capacity of FAU-X monolith is equivalent to those of Cu-HCF@SiO₂ (Fig. 8).

In literature, it was shown that higher kinetics of cation exchange were observed for higher mesopore volumes in mesoporous LTA [4]. For Cu-HCF@SiO₂, the mesopore volume is 0.57 mL/g [17] corresponding to a mesopore volume per unit of volume of 0.26 mL/cm³. For FAU-X monoliths the secondary porosity in between nanocrystals is 0.38 mL/g corresponding to 0.23 mL/cm³. The mesopore and secondary pore volumes to access to the nanocrystals of either Cu-HCF nanoparticles or FAU-X nanocrystals are practically identical per unit volume. These pore volumes are responsible for fast ion transport to the active site and cannot be responsible for the lower dynamic capacity of FAU-X monoliths in comparison to its usefull capacity (in batch). The explanation of the difference is coming from the size of the nanocrystals. In the case of Cu-HCF the nanoparticle size is around 15 nm and all the exchange sites are available under dynamic adsorption, whereas for FAU-X monoliths, two populations of nanocrystals size have been obtained: 100/200 nm and 800/900 nm (Monolith-FAU-X-2, Table 2). It can be anticipated that only the smallest nanocrystals 100/200 nm are fully accessible for the dynamic cation exchange as well as the exterior corona of the larger nanocrystals.

4. Conclusion

Binderless FAU-X monoliths and particles (1 mm) have been synthesized by a double pseudomorphic transformation starting from silica mesoporous/macroporous monoliths with adjustable macropore diameters ($2 < D < 20 \mu\text{m}$) and mesoporous silica particles (1 mm), respectively. The parent silica materials were first transformed into silica-alumina materials, which were then transformed into FAU-X monoliths and particles build by an aggregation of nanocrystals giving rise to intercrystalline porosity beneficial for fast diffusion. FAU-X

monoliths and particles have been used to trap cesium ions contained in mineral drinking water in the presence of competing cations as Ca^{2+} , Mg^{2+} , K^+ , Na^+ . Their performance as adsorbents for the decontamination of Cs-containing effluents have been compared to those of a benchmark adsorbent Sorbmatech® (Cu-HCF@SiO_2) based on copper hexaferrocyanate nanoparticles immobilized into mesoporous silica particles.

In batch FAU-X monoliths feature fast kinetic of adsorption (in less than 2 min) as Cu-HCF@SiO_2 and higher rate of adsorption in comparison to FAU-X particles highlighting the importance of a homogeneous large macropore network for high fluid dynamics in the design of adsorbents. FAU-X monoliths possess an adsorption capacity 3 times higher than benchmark Cu-HCF@SiO_2 for equilibrium Cs^+ concentration of 0.5 mmol/L with capacities of 0.6 and 0.2 meq/g for FAU-X monolith and Cu-HCF@SiO_2 , respectively.

The dynamic Cs^+ adsorption efficiency of FAU-X monoliths (macropore diameter of 20 μm) is equivalent to that of Cu-HCF@SiO_2 for the decontamination of Cs effluents in mineral water with a Cs^+ concentration of 0.5 mmol/L and Darcy rates of 1.5 – 3 m/h. FAU-X monoliths show ideal steep breakthrough curves with an efficient adsorption capacity of 224 Bed Volume (corresponding to 0.29 meq/g) and a total dynamic capacity of 296 Bed Volume (0.38 meq/g). This dynamic adsorption capacity corresponds to 62% of its usefull capacity (obtained in batch), and could be probably increased by decreasing further the size of the nanocrystals of the monolith skeleton. FAU-X monoliths could represent an alternative to existing sorbents easier to handle than powders or particles. Moreover the possibility to regenerate, and reuse, the FAU-X monoliths with NaCl solutions is also attractive for applications aimed at recovering the trapped cations.

This study shows that FAU-X monoliths built with nanocrystals featuring hierarchical trimodal porosity exhibit excellent dynamic properties and are excellent candidates for continuous flow applications for process intensification using classical FAU-X particles.

ACKNOWLEDGMENTS

This research was funded by the ANR french agency, Project ANR-TAMTAM N° ANR-15-CE08-0008-01. Authors thanks also the ANR french agency, Project Labex CheMI syst. The authors wish to acknowledge the support from the Chemistry Platform of Campus in Montpellier (Plateform MEA University Montpellier), on which SEM and EDS have been performed. Authors thank Agnès Grandjean for fruitfull discussions.

References

1. B. Said, T. Cacciaguera, F. Tancret, F. Fajula, A. Galarneau, *Microporous Mesoporous Mater.* 227 (2016) 176-190.
2. B. Said, A. Grandjean, Y. Barre, F. Tancret, F. Fajula, A. Galarneau, *Microporous Mesoporous Mater.* 232 (2016) 39-52.
3. A. Galarneau, Z. Abid, B. Said, Y. Didi, K. Szymanska, A. Jarzebski, F. Tancret, H. Hamaizi, A. Bengueddach, F. Di Renzo, F. Fajula, *Inorganics* 4 (2016) 9.
4. Z. Xue, J. Ma, W. Hao, X. Bai, Y. Kang, J. Liu, R. Li, *J. Mater. Chem.* 22 (2012) 2532-2538.
5. M.W. Munthali, E. Johan, H. Aono, N. Matsue, *J. Asian Ceram. Soc.* 3 (2015) 245-250.
6. D. Alby, C. Charnay, M. Heran, B. Prelot, J. Zajac, *J. Hazard. Mater.* 344 (2018) 511-530.
7. T. Nenoff, J. L. Krumhansl, *Solvent Extract. Ion Exch.* 30 (2012) 33-40.
8. W. Baek, S. Ha, S. Hong, S. Kim, Y. Kim, *Microporous Mesoporous Mater.* 264 (2018) 159-166.
9. Y. Yang, N. Burke, J. Zhang, S. Lim, Y. Zhu, *RSC Adv.* 4 (2014) 7279-7287.
10. H. S. Sherry, *J. Phys. Chem.* 70 (1966) 1158-1168.
11. P. K. Sinha, P. K. Panicker, R. V. Amalraj, V. Krishnasamy, *Waste Manag.* 15 (1995) 149-157.
12. H. Aono, R. Takahashi, Y. Itagaki, E. Johan, N. Matsue, *J. Nuclear Mater.* 508 (2018) 20-25.
13. P. K. Sinha, P.M. Sayasai, R. Shankar, R. Muthiah, S. Bera, S.V. Narasimhan, A.N. Pandey, A. Jaleel, *J. Radioanal. Nucl. Chem.* 242 (1999) 341-348.
14. H.-C. zur Loye, T. Besmann, J. Amoroso, K. Brinkman, A. Grandjean, C. H. Henager, S. Hu, S. T. Misture, S. R. Phillpot, N. B. Shustova, H. Wang, R. J. Koch, G. Morrison, E. Dolgoplova, *Chem. Mater.* 30 (2018) 4475-4488.
15. C. Cabaud, Y. Barré, L. De Windt, S. Gill, E. Dooryhée, M. P. Moloney, N. Massoni, A. Grandjean, *Adsorption* (2019) 1-7. <https://doi.org/10.1007/s10450-019-00040-6>
16. I. Bokor, S. Sdraulig, P. Jenkinson, J. Madamperuma, P. Martin, *J. Environ. Radioact.* 151 (2016) 530-536.
17. C. Michel, Y. Barre, L. De Windt, C. de Dieuleveult, E. Brackx, A. Grandjean, *J. Environ. Chem. Eng.* 5 (2017) 810-817.
18. C. Michel, Y. Barre, M. Ben Guiza, C. de Dieuleveult, L. De Windt, A. Grandjean, *Chem. Eng. J.* 339 (2018) 288-295.

19. Y. Didi, B. Said, T. Cacciaguerra, K. L. Nguyen, V. Wernert, R. Denoyel, D. Cot, W. Sebai, M.-P. Belleville, J. Sanchez-Marcano, F. Fajula, A. Galarneau, *Microporous Mesoporous Mater.* 281 (2019) 57-65.
20. P. Boscaro, T. Cacciaguerra, D. Cot, F. Fajula, V. Hulea, A. Galarneau, *Microporous Mesoporous Mater.* 280 (2019) 37-45.
21. A. Galarneau, A. Sachse, B. Said, C. H. Pelisson, P. Boscaro, N. Brun, L. Courtheoux, N. Olivi-Tran, B. Coasne, F. Fajula, F., *C. R. Chimie* 19 (2016) 231-247.
22. X. Zhang, D. Tang, M. Zhang, *Powder Technol.* 235 (2013) 322–328.
23. I. Langmuir, *J. Amer. Chem. Soc.*, 40 (1918) 1361-1403.
24. P.S. Ghosal, A.K. Gupta, *J. Molec. Liquids* 225 (2017) 137–146.
25. K.-Y. Lee, M. Park, J. Kim, M. Oh, E-H. Lee, K-W. Kim, D-Y. Chung, J-K. Moon, *Chemosphere* 150 (2016) 765-771.
26. H. C. Thomas, *J. Am. Chem. Soc.* 66 (1944) 1664-1666.
27. Z. Yu, T. Qi, J. Qu, Y. Guo, *Hydrometallurgy* 158 (2015) 165–171.

Table 1. Characteristic of the FAU-X adsorbents use for Cs capture.

Adsorbents	D_{particle} (μm)	D_{macro} (μm)	V_{mic} (mL/g)	D_{crystals} (nm)
Monolith FAU-X-1 (nano)		2	0.30	150-200 / 600-800
Monolith FAU-X-2 (nano)		20	0.30	150-200 / 800-900
Monolith FAU-X-3 (micro)		2	0.33	1000-1500
Particles FAU-X-1(low agg.)	800-1000	0.1-0.4	0.32	100-200 / 400-500
Particles FAU-X-2 (high agg.)	800-1000	none	0.29	500-700

Table 2. Chemical analysis by EDS of adsorbents (unwashed samples) after Cs capture (Cs EDS) in batch for 24 h with $[\text{CsOAc}] = 3.59 \text{ mmol/L}$ in mineral water (Evian), adsorbent 0.5 g/L. Comparison with CEC (Cs) from supernatant analysis.

Adsorbents	Si/Al	Atomic composition after Cs capture	Cs meq/g	Cs EDS meq/g _{final}
Monolith FAU-X-1	1.28	$\text{Na}_{5.62}\text{Mg}_{2.99}\text{K}_{0.17}\text{Ca}_{26.74}\text{Cs}_{13.64}\text{Al}_{84}\text{Si}_{108}$	1.75	1.62
Monolith FAU-X-3	1.46	$\text{Na}_{6.0}\text{Mg}_{2.6}\text{K}_{0.4}\text{Ca}_{32}\text{Cs}_{17}\text{Al}_{78}\text{Si}_{114}$	1.0	1.82
Particles FAU-X-1	1.49	$\text{Na}_{6.2}\text{Mg}_{2.8}\text{K}_{0.3}\text{Ca}_{26.7}\text{Cs}_{16.33}\text{Al}_{77}\text{Si}_{115}$	1.0	1.84
Particles FAU-X-2	1.39	$\text{Na}_{6.4}\text{Mg}_{2.6}\text{K}_{0.4}\text{Ca}_{27}\text{Cs}_{16.5}\text{Al}_{80}\text{Si}_{111}$	1.0	1.86

Table 3. Cs⁺ adsorption properties in batch of FAU-X monoliths and particles fitted by the Langmuir model with solutions of CsNO₃ in mineral water.

Adsorbents	K _L (L/meq)	Q _m (meq/g)	Correlation coefficient R ²
Monolith FAU-X-1	3.46	0.96	0.995
Particles FAU-X-1*	3.31	1.01	0.999
Particles FAU-X-2	4.06	0.82	0.998

* fit performed without the lowest equilibrium concentration for FAU-X-1

Table 4. Dynamic adsorption kinetic constants K_{th} of Cs⁺ and bed capacities Q (efficient, half, maximum of breakthrough curves) of Monolith FAU-X-2 (0.5 x 2.4 cm, m = 0.181 g) with [CsOAc] = 0.5 mmol/L in mineral water. Comparison with literature data [18] for benchmark Cu-HCF@SiO₂.

	2 nd Capture	3 rd Capture	4 th Capture	Cu- HCF@SiO ₂
Flow (mL/min)	0.5	0.5	1.0	
Flow (m/h)	1.5	1.5	3.0	2.0
K _{th} (mL/mg/min)	1.60	1.60	1.92	
Q _{bed} (mg/g)	43.8	49.3	46.8	
Q _{bed} (meq/g)	0.33	0.37	0.35	
Q _{eff} (mL/mL)	191	224	191	230
Q _{eff} (meq/g)	0.25	0.29	0.25	0.17
Q _{half} (mL/mL)	255	278	260	250
Q _{half} (meq/g)	0.33	0.36	0.25	0.18
Q _{max} (mL/mL)	287	331	311	300
Q _{max} (meq/g)	0.37	0.43	0.40	0.22

Figure Captions

Figure 1. SEM pictures of Monolith FAU-X build with nanocrystals of macropore diameter 20 μm (Monolith-FAU-X-2).

Figure 2. XRD pattern of Monolith FAU-X build with nanocrystals of macropore diameter 20 μm (Monolith-FAU-X-2).

Figure 3. Nitrogen adsorption/desorption isotherm at 77 K of Monolith FAU-X build with nanocrystals of macropore diameter 20 μm (Monolith-FAU-X-2).

Figure 4. SEM pictures of FAU-X particles build with nanocrystals: (a) Particles-FAU-X-1 with low nanocrystals aggregation and (b) Particles-FAU-X-2 with high nanocrystals aggregation.

Figure 5. Kinetic of Cs^+ adsorption in batch in mineral water with $[\text{CsOAc}] = 3.59 \text{ mmol/L}$ and 0.5 g/L adsorbents for: (square) Monolith-FAU-X-1, (circle) Particles-FAU-X-1 with low nanocrystals aggregation and (triangle) Particles-FAU-X-2 with high nanocrystals aggregation.

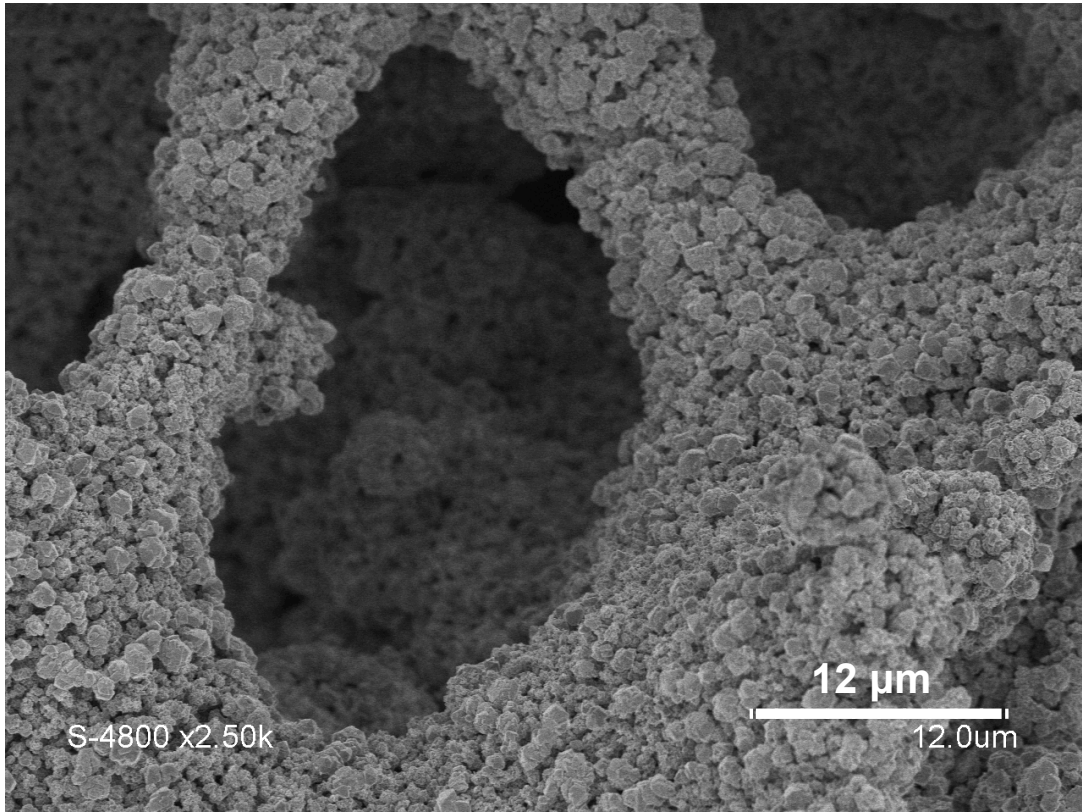
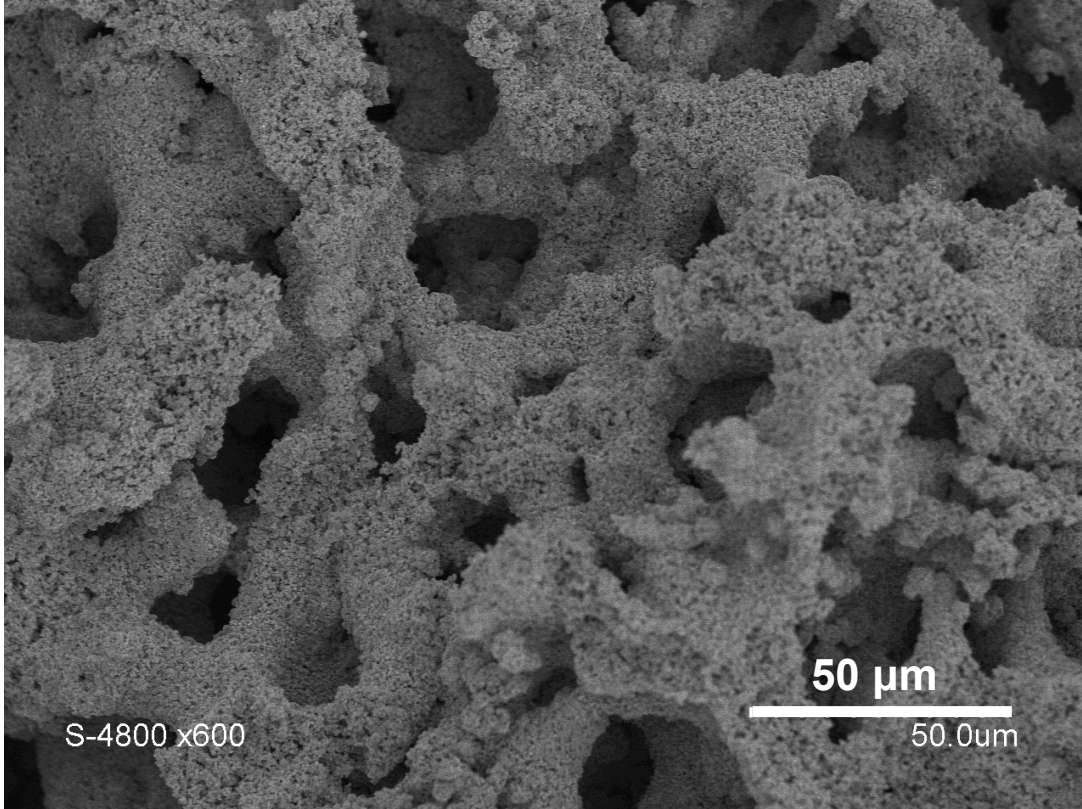
Figure 6. Adsorption isotherms of Cs^+ in batch in mineral water with $[\text{CsNO}_3] = 0.50$ and 0.74 mmol/L and $[\text{adsorbent}] = 0.5$ and 1 g/L after 1 h stirring for: (square) Monolith-FAU-X-1, (circle) Particles-FAU-X-1 with low nanocrystals aggregation and (triangle) Particles-FAU-X-2 with high nanocrystals aggregation. Langmuir fits are presented for (orange) Monolith-FAU-X-1 and (blue) Particles-FAU-X-2 with high nanocrystals aggregation.

Figure 7. Adsorption of Cs^+ in batch in deionized water with $[\text{CsNO}_3] = 0.50$ and 0.74 mmol/L and $[\text{adsorbent}] = 0.5$ and 1 g/L after 1 h stirring for: (square) Monolith-FAU-X-1, (circle) Particles-FAU-X-1 with low nanocrystals aggregation and (triangle) Particles-FAU-X-2 with high nanocrystals aggregation.

Figure 8. Breakthrough curves of Cs^+ adsorption $[\text{CsOAc}] = 0.5 \text{ mmol/L}$ in mineral water with Monolith-FAU-X-2 (macropore diameter 20 μm) for (black circles) 2nd adsorption at 0.5 mL/min (1.52 m/h), (blue circles) 3rd adsorption at 0.5 mL/min (1.52 m/h) and (red circles) 4th

adsorption at 1 mL/min (3.04 m/h). (Grey squares) Data of benchmark Cu-HCF@SiO₂ taken from ref. 18. Lines are for eyes guide.

Figure 1



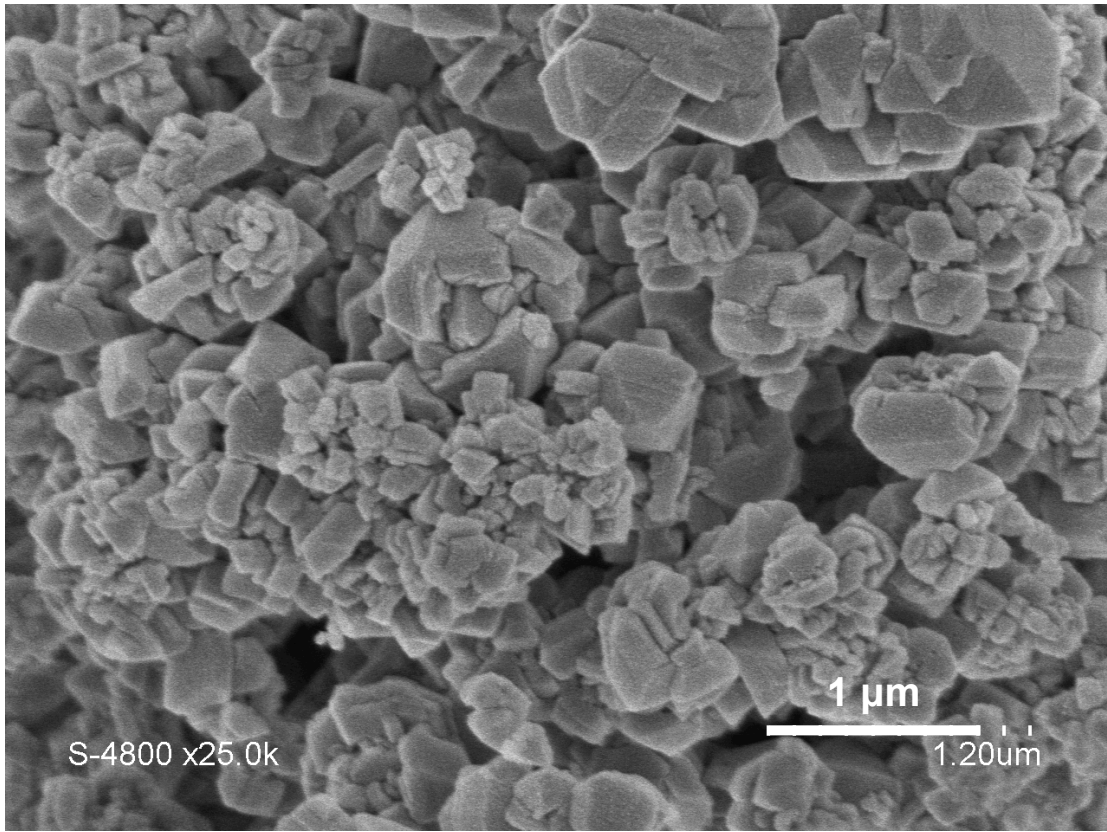


Figure 2

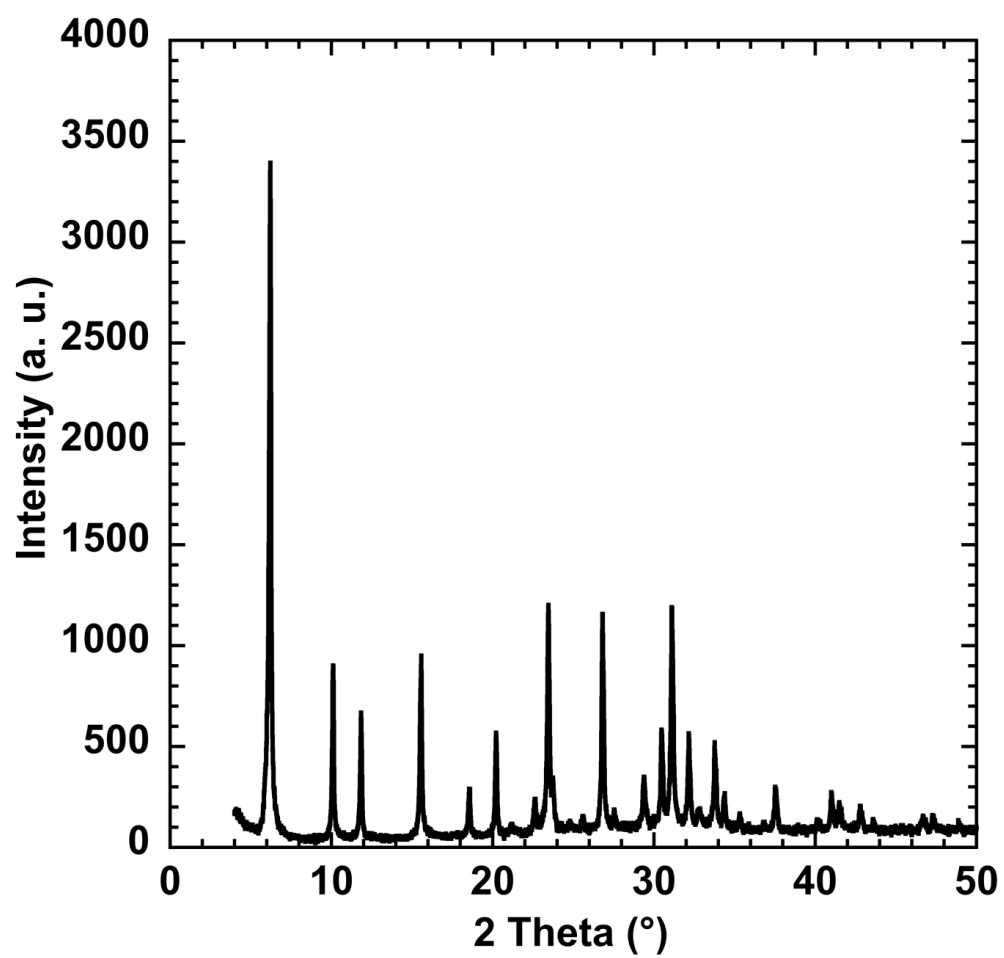


Figure 3

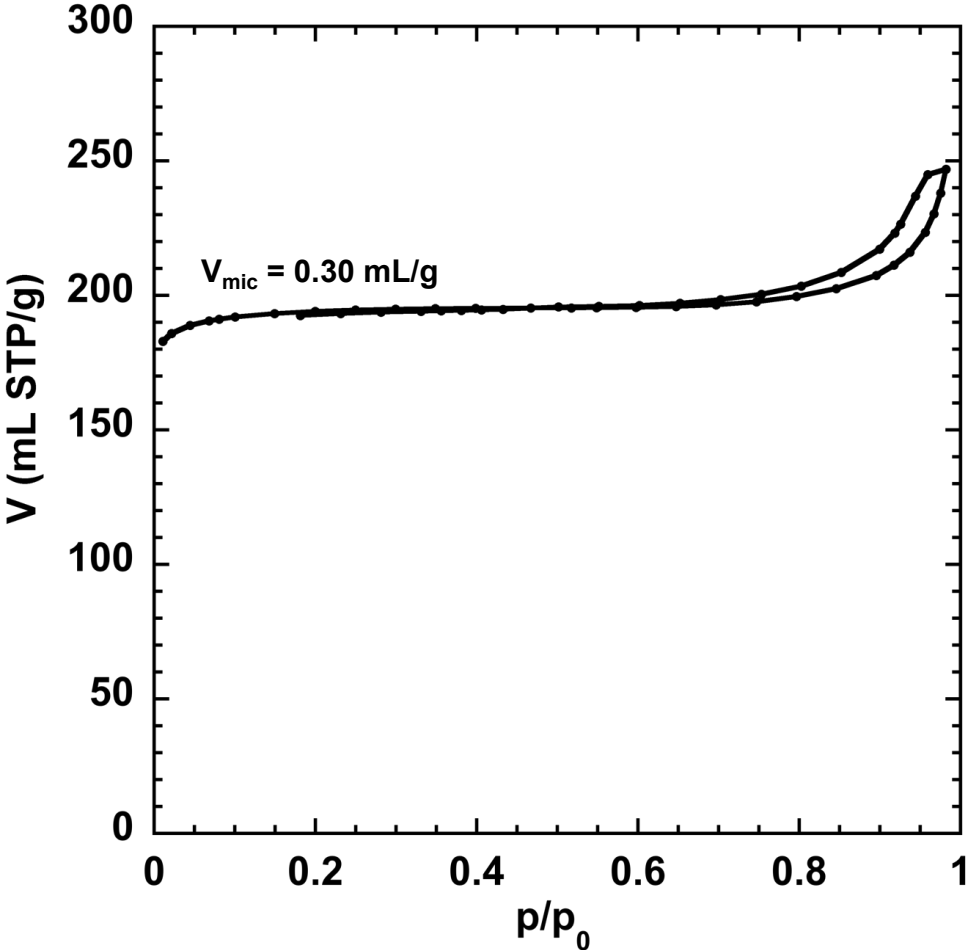


Figure 4

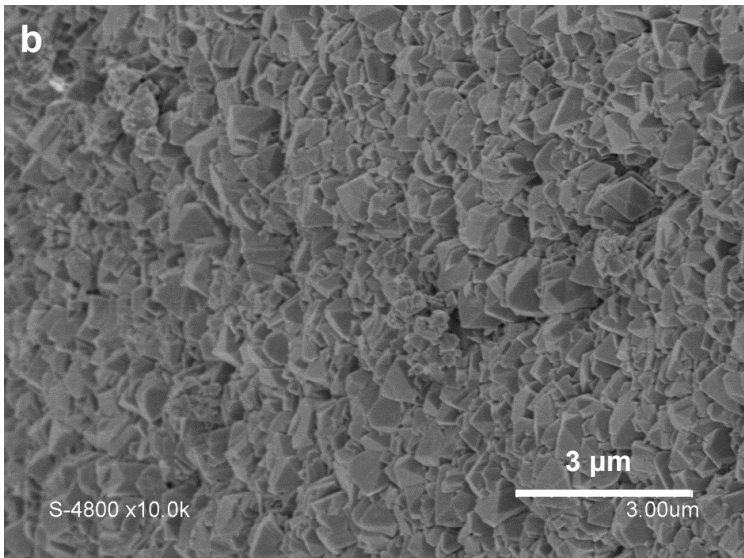
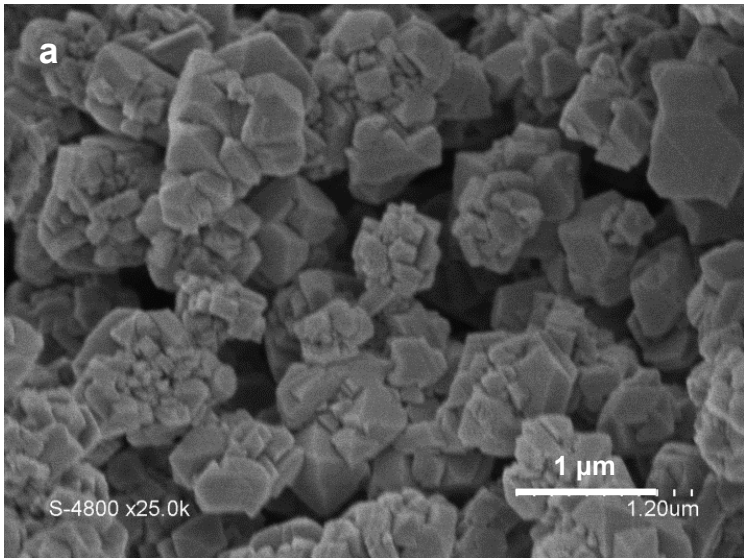
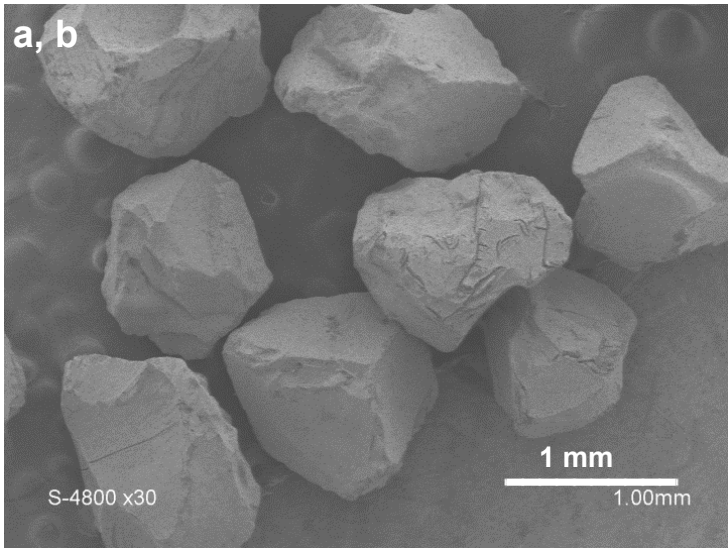


Figure 5

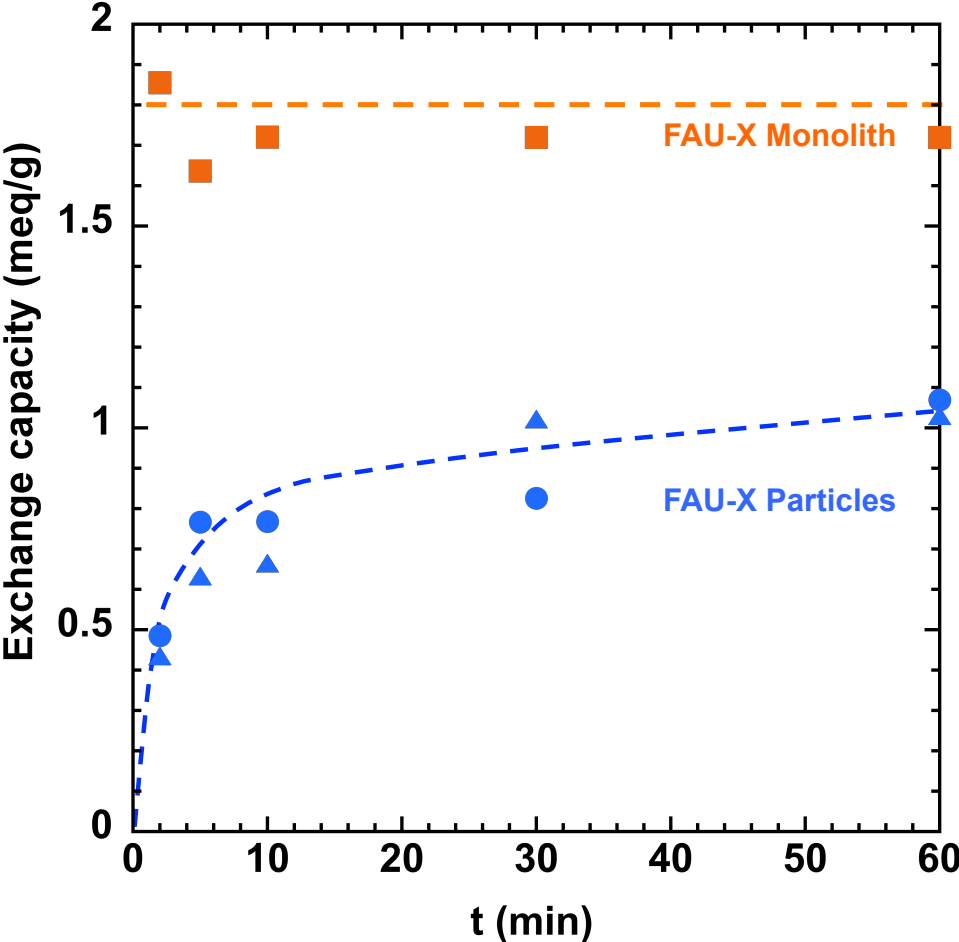


Figure 6

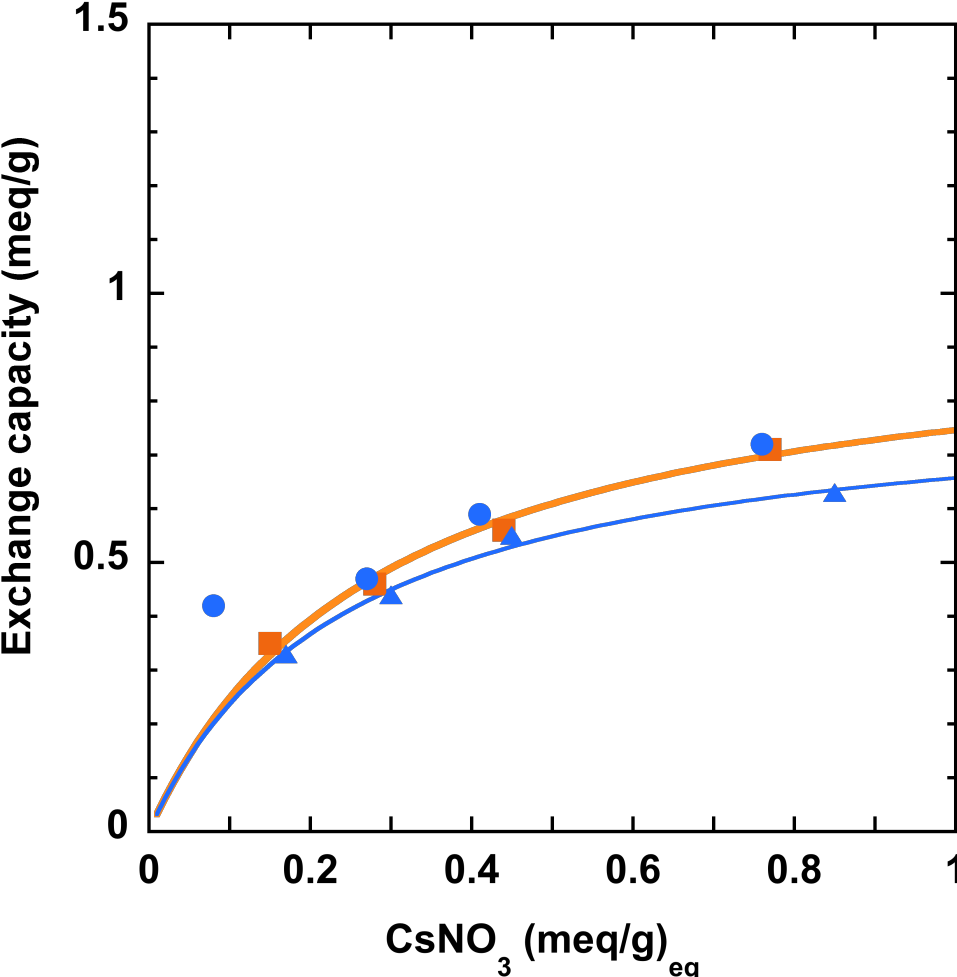


Figure 7

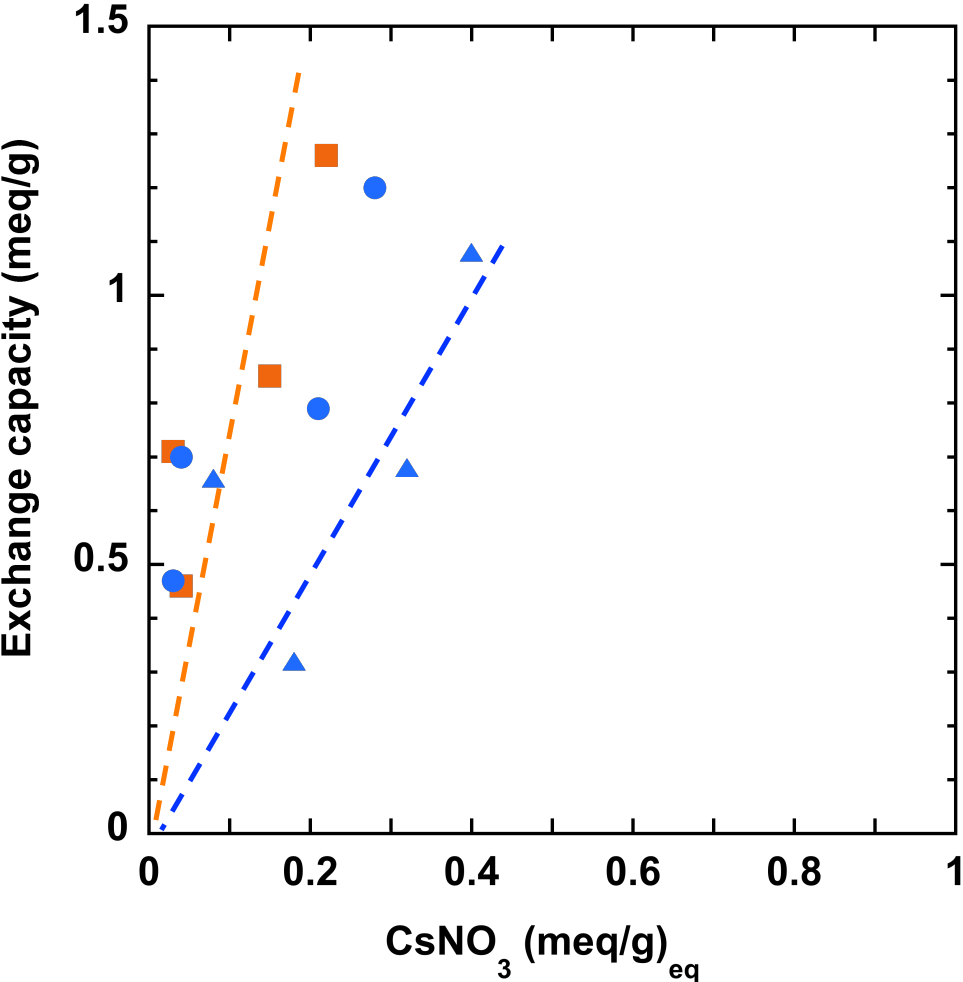
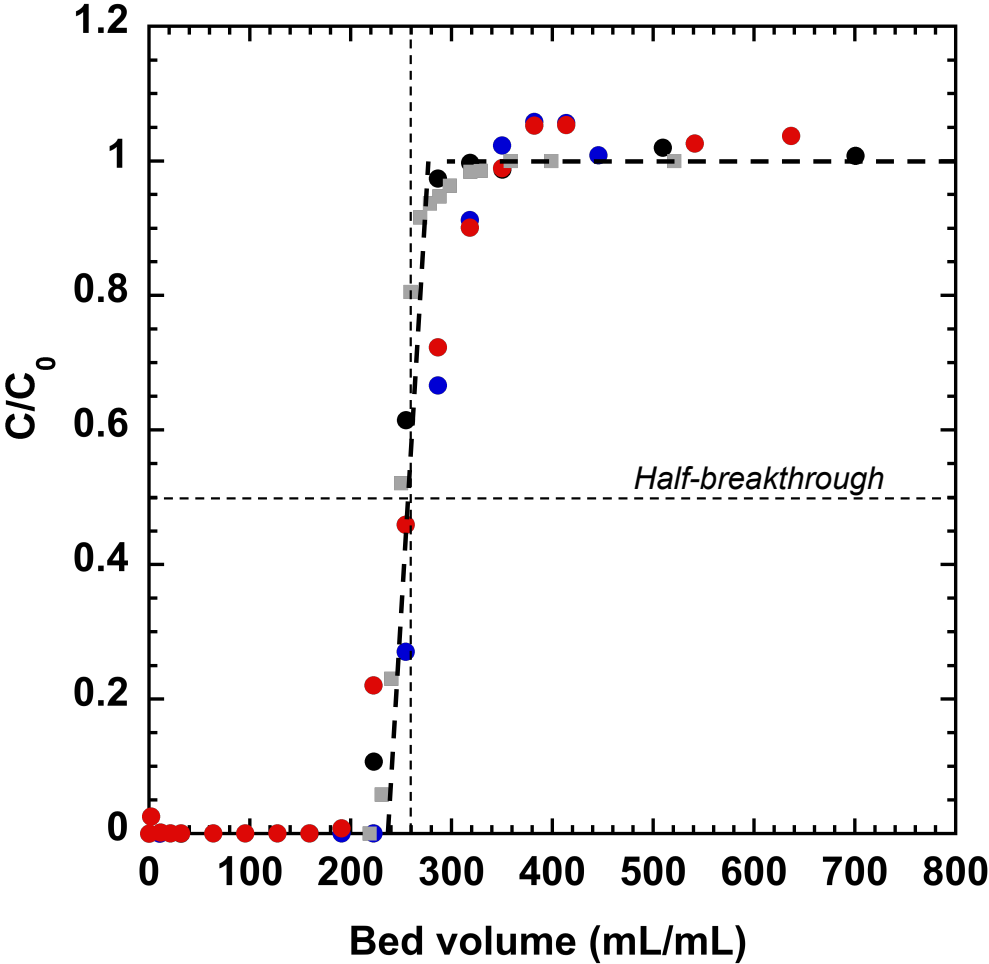


Figure 8



Graphical Abstract

