



HAL
open science

Habitat and taxon as driving forces of carbohydrate catabolism in marine heterotrophic bacteria: example of the model algae-associated bacterium *Zobellia galactanivorans* Dsij T

Tristan Barbeyron, François Thomas, Valérie Barbe, Hanno Teeling, Chantal Schenowitz, Carole Dossat, Alexander Goesmann, Catherine Leblanc, Frank Oliver Glöckner, Mirjam Czjzek, et al.

► To cite this version:

Tristan Barbeyron, François Thomas, Valérie Barbe, Hanno Teeling, Chantal Schenowitz, et al.. Habitat and taxon as driving forces of carbohydrate catabolism in marine heterotrophic bacteria: example of the model algae-associated bacterium *Zobellia galactanivorans* Dsij T. *Environmental Microbiology*, 2016, Ecology and Physiology of Marine Microbes, 18 (12), pp.4610-4627. 10.1111/1462-2920.13584 . hal-02137896

HAL Id: hal-02137896

<https://hal.science/hal-02137896v1>

Submitted on 23 May 2019

HAL is a multi-disciplinary open access archive for the deposit and dissemination of scientific research documents, whether they are published or not. The documents may come from teaching and research institutions in France or abroad, or from public or private research centers.

L'archive ouverte pluridisciplinaire **HAL**, est destinée au dépôt et à la diffusion de documents scientifiques de niveau recherche, publiés ou non, émanant des établissements d'enseignement et de recherche français ou étrangers, des laboratoires publics ou privés.

2

3 **Habitat and taxon as driving forces of carbohydrate catabolism in marine heterotrophic bacteria:**
4 **example of the model algae-associated bacterium *Zobellia galactanivorans* Dsij^T**

5

6 Tristan Barbeyron^{1*}, François Thomas¹, Valérie Barbe², Hanno Teeling³, Chantal Schenowitz², Carole
7 Dossat², Alexander Goesmann⁴, Catherine Leblanc¹, Frank Oliver Glöckner^{3,5}, Mirjam Czjzek¹, Rudolf
8 Amann³ and Gurvan Michel^{1*}

9

10 ¹Sorbonne Universités, UPMC Univ Paris 06, CNRS, UMR 8227, Integrative Biology of Marine Models,
11 Station Biologique de Roscoff, CS 90074, Roscoff, Bretagne, France

12 ²CEA/DRT/IG/Genoscope, Évry, France

13 ³Max Planck Institute for Marine Microbiology, Celsiusstraße 1, Bremen, Germany

14 ⁴Bioinformatics and Systems Biology, Justus-Liebig-Universität, Gießen, Germany.

15 ⁵Jacobs University Bremen gGmbH, Campusring 1, Bremen, Germany

16 *Corresponding authors: Tristan Barbeyron, E-mail: tristan.barbeyron@sb-roscoff.fr, Gurvan Michel,
17 E-mail: gurvan.michel@sb-roscoff.fr, Station Biologique de Roscoff, Place Georges Teissier, 29688,
18 Roscoff, Bretagne, France. Tel.: 33-298-29-23-30; Fax: 33-298-29-23-24

19

20 Running title: Complete genome of *Zobellia galactanivorans*

21

22 **Conflict of Interest**

23 The authors declare no conflict of interest.

24

1 E-mail addresses and telephone numbers of all authors:

2

Tristan Barbeyron	tristan.barbeyron@sb-roscoff.fr	+33 298 2923 32
François Thomas	ftthomas@sb-roscoff.fr	+33 298 2923 23
Valérie Barbe	vbarbe@genoscope.cns.fr	+33 160 8725 00
Hanno Teeling	hsteeling@mpi-bremen.de	+49 421 2028 976
Chantal Schenowitz	chantal.schenowitz@cea.fr	+33 160 8725 00
Carole Dossat	cdossat@genoscope.cns.fr	+33 160 8725 00
Alexander Goesmann	alexander.goesmann@computational.bio.uni-giessen.de	+49 641 99 35 800
Catherine Leblanc	catherine.leblanc@sb-roscoff.fr	+33 298 2923 62
Frank Oliver Glöckner	fgloeckn@mpi-bremen.de	+49 421 2028 970
Mirjam Czjzek	czjzek@sb-roscoff.fr	+33 298 2923 75
Rudolf I. Amann	ramann@mpi-bremen.de	+49 421 2028 930
Gurvan Michel	gurvan.michel@sb-roscoff.fr	+33 298 2923 30

3

4 **Keywords:** marine heterotrophic bacteria, bacteria - algae interactions, carbon cycle, sulfated
5 polysaccharides, comparative genomics

6

1 **Originality – significance statement**

2 Marine heterotrophic bacteria (MHB) are crucial players in the recycling of organic carbon in the sea
3 and especially of algal polysaccharides. However the precise roles of MHB in the carbon cycle are
4 difficult to define, mainly due to our limited knowledge on the degradation pathways for algal
5 polysaccharides in comparison to those for land plant polysaccharides. Here we contribute to close
6 this gap by describing an in-depth physiological and genomic analysis of the marine flavobacterium
7 *Zobellia galactanivorans* DsiJ^T, a model organism for studying the bioconversion of algal
8 polysaccharides. Bioinformatic and experimental approaches confirm the exceptional capacity of this
9 flavobacterium for using carbohydrates among MHB. *Z. galactactanivorans* DsiJ also displays multiple
10 adaptive traits to a macroalgae-associated lifestyle, supporting that this bacterium is a suitable
11 model for studying seaweed-bacteria interactions. On a more holistic level, a comparative analysis of
12 126 MHB genomes, including *Z. galactactanivorans*, demonstrate that the carbohydrate catabolism
13 of MHB is influenced by phylogeny as well as habitat. As a consequence, clustering analysis of
14 carbohydrate-active enzymes can be used as a predictive tool to assess a bacterial ecological niche
15 within the carbon cycle.

16

1 **Summary**

2 The marine flavobacterium *Zobellia galactanivorans* Dsij^T was isolated from a red alga and by now
3 constitutes a model for studying algal polysaccharide bioconversions. We present an in-depth
4 analysis of its complete genome and link it to physiological traits. *Z. galactanivorans* exhibited the
5 highest gene numbers for glycoside hydrolases, polysaccharide lyases and carbohydrate esterases
6 and the second highest sulfatase gene number in a comparison to 125 other marine heterotrophic
7 bacteria (MHB) genomes. Its genome contains 50 Polysaccharide Utilization Loci, 22 of which contain
8 sulfatase genes. Catabolic profiling confirmed a pronounced capacity for using algal polysaccharides
9 and degradation of most polysaccharides could be linked to dedicated genes. Physiological and
10 biochemical tests revealed that *Z. galactanivorans* stores and recycles glycogen, despite loss of
11 several classic glycogen-related genes. Similar gene losses were observed in most *Flavobacteriia*,
12 suggesting presence of an atypical glycogen metabolism in this class. *Z. galactanivorans* features
13 numerous adaptive traits for algae-associated life, such as consumption of seaweed exudates, iodine
14 metabolism, and methylotrophy, indicating that this bacterium is well equipped to form profitable,
15 stable interactions with macroalgae. Finally, using statistical and clustering analyses of the MHB
16 genomes we show that their carbohydrate catabolism correlates with both taxonomy and habitat.

17

1 Introduction

2 Half of Earth's primary production occurs in marine environments (Field et al., 1998), mostly in the
3 open ocean by phytoplankton. By contrast, macrophytes (macroalgae and seagrasses) only
4 contribute significantly to primary production in coastal ecosystems (Smith, 1981; Gattuso et al.,
5 1998). Polysaccharides constitute a large fraction of algal biomass. Cell wall polysaccharides
6 constitute ~50% of dry weight in macroalgae (Kloareg and Quatrano, 1988) and up to 70% in
7 microalgae that produce exopolysaccharides (EPS) (Malis Arad, 1988; Hoagland et al., 1993). Marine
8 phototrophs store photoassimilates as intracellular polysaccharides (glycogen, starch or laminarin)
9 (Michel et al., 2010). Moreover, polysaccharide-rich algal debris released in surface waters can form
10 particles that can sink to the sediment. All these sources of polysaccharides represent potential
11 substrate niches for marine heterotrophic bacteria (MHB). Diversity and (meta)genomic studies have
12 unveiled the major role that some MHB clades play as carbon recyclers, mainly *Alpha*- and
13 *Gammaproteobacteria*, *Bacteroidetes*, *Planctomycetes* and *Verrucomicrobia* (Kirchman, 2002;
14 Glöckner et al., 2003; Giovannoni et al., 2005; Azam and Malfatti, 2007; Ivars-Martinez et al., 2008;
15 Teeling et al., 2012; Buchan et al., 2014; Teeling et al., 2016). Yet, our understanding of the marine
16 carbon cycle suffers from a lack of detailed biochemical knowledge, which is why genomic data from
17 marine degraders are essentially annotated using knowledge from decades of research on the
18 decomposition of terrestrial plants by bacteria and fungi (Gilbert et al., 2008). However, structures of
19 phytoplankton EPS are mostly uncharacterized, and while polysaccharides from macroalgae are
20 better understood, they exhibit an enormous chemical diversity and differ greatly from their
21 terrestrial counterparts (Popper et al., 2011). Notably all marine algae produce sulfated
22 polysaccharides that are absent from land plants (Ficko-Blean et al., 2015b). However, our
23 understanding of the enzymatic decomposition of these marine polysaccharides is still poor. The
24 discovery of glycoside hydrolases and polysaccharide lyases specifically targeting algal
25 polysaccharides has accelerated during the last 15 years (Michel and Czjzek, 2013; Hehemann et al.,
26 2014; Martin et al., 2014). Particularly *Zobellia galactanivorans* Dsij^T (Barbeyron et al., 2001) has so

1 far played a pivotal role for many of these advances. This marine flavobacterium was originally
2 isolated from a healthy red macroalga (*Delesseria sanguinea*) in Roscoff (Brittany, France) due to its
3 carrageenolytic activity (Potin et al., 1991) and has since been the source for numerous novel algae-
4 specific polysaccharidases (Martin et al., 2014). Notably, studies of this microorganism resulted in the
5 discovery of β -porphyranases and α -1,3-(3,6-anhydro)-L-galactosidases, enzymes that catalyze two
6 key steps in agar recycling. Some of the respective genes were laterally transferred from marine
7 bacteria to gut bacteria of the Japanese population, likely due to their traditional consumption of
8 edible seaweeds (Hehemann et al., 2010; Rebuffet et al., 2011). The first operons of marine bacteria
9 for alginate and mannitol consumption were also characterized in *Z. galactanivorans* (Thomas et al.,
10 2012; Groisillier et al., 2015). Other *Zobellia* species and uncultured strains were found in coastal
11 regions around the world (Nedashkovskaya et al., 2004; Schulze et al., 2006; Alonso et al., 2007).
12 Most strains were isolated from algae where interactions might range from symbiosis with green
13 seaweeds (Matsuo et al., 2005) to algicidal behavior towards dinoflagellates (Skerratt et al., 2002).
14 Recent studies indicate that *Zobellia* strains are an integral part of the core microbiota of healthy
15 seaweeds (Hahnke and Harder, 2013; Hollants et al., 2013; Martin et al., 2015; Marzinelli et al.,
16 2015).

17 We here report the analysis of the complete genome of *Z. galactanivorans* Dsij^T in the context of
18 comprehensive physiological studies. Moreover, the carbohydrate catabolism of *Z. galactanivorans*
19 was compared to that of 125 other MHB highlighting the multiple niches occupied by heterotrophic
20 bacteria in the marine carbon cycle.

21 **Results and discussion**

22 ***Z. galactanivorans* has a pronounced capacity for algal polysaccharide degradation**

23 The *Z. galactanivorans* genome encodes 101 peptidase genes from 37 MEROPS families and genes
24 for 141 glycoside hydrolases (GH), 15 polysaccharide lyases (PL) and 18 carbohydrate esterases (CE)
25 (Table 1). Numerous GH and PL have modular architectures and 37 associated CBM were identified.

1 The carbohydrate active enzymes (CAZymes) cover a wide range of families (GH=44, PL=8, CE=9,
2 CBM=14). Moreover, 71 sulfatases were identified (Fig. S1). They belong to 17 subfamilies of the S1
3 family (formyl-glycine dependent sulfatases) (see the SulfAtlas database, [http://abims.sb-
4 roscoff.fr/sulfatlas/](http://abims.sb-roscoff.fr/sulfatlas/)) (Barbeyron et al., 2016). In comparison to 125 other sequenced MHB identified
5 in the CAZY database (<http://www.cazy.org/>, Lombard et al., 2014), *Z. galactanivorans* had the
6 highest number of GH, PL and CE, and the second highest number of sulfatases after *Rhodopirellula*
7 *baltica* SH 1^T (Glöckner et al., 2003) (Table S1). Most of these CAZymes and sulfatases had signal
8 peptides and were predicted to be either periplasmic or membrane-anchored (121/141 GH, 14/15 PL
9 and 61/71 sulfatases), suggesting that they target external substrates. All essential genes of the Sec,
10 TaT and Type-IX (unique to *Bacteroidetes*) secretion systems (McBride and Zhu, 2013) are present.
11 Among the 28 proteins with C-terminal type IX secretion domains (TIGR04183 profile), 14 were
12 CAZymes that mostly target algal polysaccharides (AgaA, AgaD, PorA, CgkA, LamC, LamD, LamE and
13 AlyA7). These predictions agree with experiments showing that the beta-agarase AgaA and the
14 kappa-carrageenase CgkA are extracellular enzymes (Barbeyron et al., 1998; Jam et al., 2005). The
15 link between type IX secretion and algal polysaccharide degradation highlights the importance of this
16 catabolism for *Z. galactanivorans*.

17 Moreover, a large capacity for substrate detection and uptake was identified. *Z. galactanivorans*
18 possesses 119 TonB-dependent receptors (TBDR) genes, 71 of which are located adjacent to *susD*-like
19 genes (Table S2). The latter code outer membrane lipoproteins that are unique to the *Bacteroidetes*
20 phylum (Thomas et al., 2011b). They bind polysaccharides and thereby assist the TBDR in substrate
21 uptake. Presence or absence of an associated *susD*-like gene thus indicates, whether a *Bacteroidetes*
22 TBDR is specific for polymers (SusC-like) (Koropatkin et al., 2012) or for small molecules (FhuA-like)
23 (Ferguson et al., 1998). *Z. galactanivorans* has the highest number of both SusC-like and FhuA-like
24 TBDR among marine *Bacteroidetes* (Table S2), suggesting remarkable capacities for the uptake of
25 both oligosaccharides and small molecules. *Z. galactanivorans* and *Zunongwangia profunda* have
26 SusC-like/FhuA-like TBDR ratios of ~1.5 indicating a preference for polysaccharides. In contrast, other

1 MHB species have lower overall TBDR numbers and SusC-like/FhuA-like ratios around or below 1.
2 Among the 31 predicted ATP-binding cassette (ABC) transporters in *Z. galactanivorans*, only 11 are
3 importers, suggesting a minor role of ABC-transporters for the import of small carbohydrates from
4 the periplasm to the cytoplasm. Only the mannitol ABC-transporter (ZGAL_4260-4662) is certain to
5 be involved in carbohydrate uptake (Groisillier et al., 2015). Moreover, *Z. galactanivorans* lacks the
6 phosphoenolpyruvate-carbohydrate phosphotransferase system (PTS). Therefore, sugar uptake likely
7 relies on Major Facility Superfamily (MFS) transporters (26 genes) and sodium/solute symporters
8 (SSS, 15 genes). This is in stark contrast with coastal *Alpha*- and *Gammaproteobacteria* which
9 essentially use ABC-transporters and PTS for sugar uptake (Poretsky et al., 2010). Eighteen of the
10 *Z. galactanivorans* TBDR are transducers that sense external compounds and transmit signals to the
11 cytoplasm via interactions with anti-sigma factors (17 genes) and extracytoplasmic function sigma
12 factors (34 genes) (Koebnik, 2005). The *Z. galactanivorans* genome also encodes 65 one-/two-
13 component regulatory systems and 122 transcriptional regulators.

14 CAZymes, sulfatases, transporters and associated regulators in the *Z. galactanivorans* genome
15 are mainly clustered into Polysaccharide Utilization Loci (PUL, Bjursell et al., 2006). Fifty PUL were
16 identified (with 3 to 29 genes) and their putative substrates were predicted when possible (Fig. 1,
17 Table S3). These PUL are likely operons, as was demonstrated for the alginolytic PUL29 (Thomas et
18 al., 2012). Twenty-two PUL contained sulfatases suggesting sulfated polysaccharides as targets. The
19 only PUL with a TBDR without associated *susD*-like gene (PUL25, Fig. 1) is predicted to import a small
20 carbohydrate (mannosylglycerate) and not an oligosaccharide. These PUL comprise six MFS-
21 transporter and eight SSS but no ABC-transporter genes, further supporting a rather minor role of
22 ABC-transporters for sugar uptake.

23 In catabolic profiling with a large collection of carbohydrates *Z. galactanivorans* grew on 9 of 11
24 tested monosaccharides, 2 of 3 polyols, 5 of 5 disaccharides and 15 of 37 polysaccharides (Table 2).
25 Polysaccharides comprised those typical for seaweeds (agar, porphyran, kappa-, iota-, and lambda-
26 carrageenans, alginate, laminarin, some fucoidans) and polysaccharides that occur in algae as well as

1 in plants (starch, β -1,3-1,4-glucan, xylan, galactan). No polysaccharides of animal origin were used,
2 confirming that *Z. galactanivorans* is highly specialized on macrophyte degradation.

3 Presence of genes corresponding to the utilization of each of the substrates was checked
4 (Table S4). In most cases the observed catabolic capacities could be explained on the genomic level,
5 but some interesting discrepancies were found. For example, *Z. galactanivorans* uses L-fucose, L-
6 rhamnose, lambda-carrageenan, some fucoidans, and arabic gum, but lacks homologs to genes that
7 are known to mediate degradation of these substrates in other organisms. This implies that
8 *Z. galactanivorans* likely has evolved new, yet uncharacterized degradation pathways for these
9 substrates. Conversely, utilization was predicted for D-ribose, D-galacturonate, D-sorbitol, glycogen,
10 cellulose, pectin, pachyman, paramylon, xyloglucan, mannan, galactomannan, arabinogalactan,
11 gluconolactone, and chitin, yet this could not be confirmed experimentally. Depending on substrate
12 types, different explanations can be proposed. For glycogen, pachyman and paramylon their three-
13 dimensional structure is a likely factor, since chemically similar, but structurally different
14 polysaccharides are used (starch, laminarin and curdlan, respectively). *Z. galactanivorans* probably
15 does not detect and/or uptake these polysaccharides. Consistently, the recognition properties of the
16 SusD-like proteins are dominated by the three-dimensional conformation of their ligands (Koropatkin
17 et al., 2008). For other carbohydrates (e.g. cellulose, xyloglucan), the substrate specificity of some
18 CAZymes was likely incorrectly predicted despite our careful annotation strategy. This is not
19 unexpected in some highly polyspecific families such as GH5 (Aspeborg et al., 2012). It is more
20 surprising for GH28 and PL1 which are considered specific to pectins (<http://www.cazy.org/>). Thus
21 these enzymes might display new, uncharacterized specificities. Another alternative scenario is that
22 the necessary genes may not be expressed under the tested conditions.

23 ***Analyses of carbohydrate biosynthetic pathways unravel an unusual glycogen metabolism in***
24 **Flavobacteriia**

1 *Z. galactanivorans* possesses 56 glycosyltransferases (GT) belonging to 11 GT families (Table 1),
2 indicating a significant capacity for carbohydrate biosynthesis. Most of these genes (31/56) are
3 localized within 14 clusters including additional carbohydrate-related genes (Table S5). Six clusters
4 include GT2 and GT4 and are probably responsible for the production of lipopolysaccharides (LPS) or
5 extracellular polysaccharides (EPS). *Z. galactanivorans* may synthesize two carbohydrate osmolytes:
6 trehalose, using a bimodular trehalose-6-phosphate synthase/phosphatase (GT20, ZGAL_101), and
7 sorbitol by a glucose-fructose oxidoreductase (ZGAL_4647).

8 Two glycogen biosynthetic genes are present, namely for glycogen synthase (ZGAL_2539, *glgA*,
9 GT5) and the 1,4-alpha-glucan branching enzyme (ZGAL_518, *glgB*, GH13_9). Surprisingly *glgC*,
10 encoding the ADP-glucose pyrophosphorylase responsible for precursor synthesis, and the three
11 genes encoding essential enzymes to recycle stored glycogen (glycogen phosphorylase, GT35; alpha-
12 1,4-glucanotransferase, GH77; debranching enzyme, *glgX*, GH13_11) are missing (Ball and Morell,
13 2003). These genes are also absent in most other *Flavobacteriia*. Genbank BLASTp searches identified
14 40 *Flavobacteriia* genera with GT5. Among these, 10 lack *glgC* and only 3, 2 and 6 have genes for
15 glycogen phosphorylase, alpha-1,4-glucanotransferase and a debranching enzyme, respectively
16 (Table S6). Moreover none of the 40 genera has a complete set of glycogen-related genes.

17 To test glycogen synthesis/recycling in *Z. galactanivorans*, cells were grown with nitrogen
18 limitation and excess of glucose to stimulate carbon storage. After three days, ethanol-insoluble
19 material was recovered with a yield of $\sim 100 \text{ mg} \cdot \text{L}^{-1}$ culture. $^1\text{H-NMR}$ analysis of the extract revealed a
20 typical glycogen spectrum (Fig. S2a), with signals from H-1(1 \rightarrow 4) [5.38 ppm], H-1(1 \rightarrow 6) [4.98 ppm]
21 and H4 [3.44 ppm] as determined in pure glycogen (Zang et al., 1991). Transmission electron
22 microscopy revealed intracellular glycogen granules (Fig.2) and biochemical quantification showed
23 that glycogen accumulates up to $1,662 \text{ nmol eq.glucose} \cdot \text{mg}^{-1}$ protein in the cytoplasm. This stored
24 glycogen was consumed when cells were transferred to medium without any carbon source
25 (Fig. S2b), and granules were invisible after six days (Fig. 2). Since *Z. galactanivorans* synthesizes and
26 recycles its own glycogen, despite the loss of classic glycogen-related genes, it must have evolved

1 new, uncharacterized enzymes for its glycogen metabolism. To our knowledge, this is the first case
2 reporting an alternative glycogen metabolism in bacteria. Since classic glycogen-related genes are
3 lacking in many other *Flavobacteriia* as well, we speculate that these alternative genes have emerged
4 early in *Flavobacteriia* evolution and are active in many other *Flavobacteriia* as well.

5 ***Adaptive traits to a macroalgae-associated lifestyle***

6 To live on seaweeds implicates extensive biological and physicochemical constraints for bacteria
7 (Egan et al., 2013). Genome analysis unraveled numerous traits indicating that *Z. galactanivorans* is
8 well adapted to interact with macroalgae (Fig. 3). First, the genome contains two polyketide
9 synthases (ZGAL_384, ZGAL_4387) that are candidates for the synthesis of polycyclic compounds
10 such as thallusin. This phytohormone produced by *Z. uliginosa*, the closest known relative to
11 *Z. galactanivorans* (Barbeyron et al., 2001; Nedashkovskaya et al., 2004), induces the normal
12 morphogenesis of green seaweeds (Matsuo et al., 2003; Matsuo et al., 2005). If thallusin production
13 is confirmed, presence of *Z. galactanivorans* could be beneficial for some algal hosts. Second,
14 *Z. galactanivorans* can feed on seaweed exudates such as mannitol (Table 2), which brown algae
15 produce in large quantities (Rousvoal et al., 2011; Groisillier et al., 2014). This capacity is due to a
16 mannitol-inducible operon (Fig. 1) (Graisillier et al., 2015). In the presence of mannitol
17 *Z. galactanivorans* forms thicker biofilms, which suggests that this exudate favors the colonization of
18 algal surfaces (Salaun et al., 2012). *Z. galactanivorans* also likely uses the red macroalgae exudate
19 digeneaside (mannosylglycerate) (Kremer, 1980), since PUL25 contains a GH63 mannosylglycerate
20 hydrolase (ZGAL_2226) and a glycerate kinase (ZGAL_2229), which can convert digeneaside into D-
21 mannose 6-phosphate and 3-phospho-D-glycerate (Fig. 1).

22 In response to stress macroalgae can rapidly produce reactive oxygen species (ROS) and reactive
23 nitrogen species (RNS) as defense mechanism (Potin et al., 2002; Cosse et al., 2007; Kumar et al.,
24 2015). *Z. galactanivorans* is well equipped to cope with such oxidative bursts (Table S7). Superoxide
25 (O_2^-) ions can be quenched by two distinct superoxide dismutases (ZGAL_114 and ZGAL_1583). The

1 detoxification of hydrogen peroxide (H₂O₂) is conducted by eight peroxidases of four families.
2 *Z. galactanivorans* features an extensive thiol-based defense, with one glutathione reductase, three
3 thioredoxin reductases, nine thioredoxins and ten peroxiredoxins. ROS-damaged proteins are
4 repaired by five methionine sulfoxide reductases. A copper-containing azurin (ZGAL_3047) also
5 participates in ROS-defense (Seib et al., 2006). *Z. galactanivorans* possesses a nitric oxide (NO)
6 reductase (NorBC, ZGAL_4311) and a nitrous oxide (N₂O) reductase (NosZ, ZGAL_2236), which
7 convert NO to dinitrogen (N₂) (Table S7). We did not find any NO synthase (Crane et al., 2010), but a
8 nitrate assimilation pathway (Luque-Almagro et al., 2011), including a nitrate reductase (ZGAL_3212)
9 and a bimodular nitrate reductase/nitrite reductase (ZGAL_1625), was identified. Consistently,
10 *Z. galactanivorans* uses nitrate as a sole nitrogen source (data not shown). However, the nitrite
11 reductase module of ZGAL_1625 is homologous to NasB from *Bacillus subtilis* JH642, which does not
12 release NO but ammonia (Ogawa et al., 1995). Therefore, there appears to be no endogenous source
13 of NO in *Z. galactanivorans* and NorBC/NosZ likely function as a detoxification system of algal NO.

14 Seaweeds can concentrate halides from seawater and release volatile halogenated organic
15 compounds (VHOCs) in response to biotic and environmental stress (Potin et al., 2002; Cosse et al.,
16 2007). Moreover, cells of brown algal kelps accumulate huge amounts of iodine in their apoplast,
17 forming an iodine reservoir implicated in chemical defense and antioxidative activities (Verhaeghe et
18 al., 2008). *Z. galactanivorans* has three vanadium-dependent haloperoxidases (vHPOs) belonging to
19 the very same family of enzymes involved in iodine uptake and VHOCs emission in macroalgae
20 (Küpper et al., 1998; Colin et al., 2005). We recently demonstrated that ZGAL_1262 and ZGAL_2088
21 are genuine iodoperoxidases (Fournier et al., 2014). The additional presence of an iodotyrosine
22 dehalogenase (ZGAL_4305) suggests that *Z. galactanivorans* has its own iodine metabolism. To test
23 this hypothesis, we compared the intracellular iodine content of *Z. galactanivorans* and a control
24 marine bacterium without any vHPO gene (*Pseudoalteromonas haloplanktis* TAC125, Medigue et al.,
25 2005). After 4 days of growth in ZoBell medium, the iodine content of *P. haloplanktis* cells was below
26 the detection limit (<2 µg.g⁻¹ dry weight), whereas pellets of *Z. galactanivorans* contained 6.1 ±

1 1.2 $\mu\text{g}\cdot\text{g}^{-1}$ dry weight (Table S8). Assuming that bacterial cell density is ranging between 0.392 $\text{g}\cdot\text{cm}^{-3}$
2 and 1 $\text{g}\cdot\text{cm}^{-3}$ (Loferer-Krossbacher et al., 1998), the corresponding intracellular iodine concentration
3 ranges between 18 and 48 μM . These values are two orders of magnitude above the oceanic iodine
4 concentration ranging from 0.44 to 0.49 μM (Küpper et al., 1998), suggesting that *Z. galactanivorans*
5 cells can accumulate iodine. This iodine accumulation, together with the activity of the characterized
6 iodoperoxidases (Fournier et al., 2014) and of the putative iodotyrosine dehalogenase, possibly helps
7 *Z. galactanivorans* to cope with algal VHOCs and the high concentration of iodine in kelp cell walls.

8 *Z. galactanivorans* has several genes that could help in competition with other microorganisms,
9 which might be beneficial for the colonization of algal surfaces (Egan et al., 2013). *Z. galactanivorans*
10 possesses the essential genes for gliding motility (McBride and Zhu, 2013), and therefore can rapidly
11 spread on surfaces (Barbeyron et al., 2001). A complete ribulose monophosphate (RuMP) pathway
12 (Hanson and Hanson, 1996) was also predicted. On land plants, methylotrophs use the RuMP
13 pathway to detoxify and assimilate the methanol indirectly released by the action of pectin
14 methylesterases (Vorholt, 2012). Like pectins, agars and carrageenans are methylated (Lahaye and
15 Rochas, 1991; Van de Velde, 2008) and removal of methyl groups during degradation would produce
16 methanol. The RuMP pathway could thus be advantageous when degrading red algal cell walls to
17 cope with the release of this toxic compound. Consistently, *Z. galactanivorans* possesses numerous
18 CE (Table 1) and uses methylated-iota-carrageenan (Table 2). Two key enzymes of the RuMP pathway
19 (3-hexulose-6-phosphate synthase, ZGAL_3942; 3-hexulose-6-phosphate isomerase, ZGAL_3941) are
20 only present in few species from eight flavobacterial genera (including some found on algae:
21 *Cellulophaga*, *Maribacter*), suggesting that this trait is rather uncommon in *Flavobacteriia*. Due to a
22 homoserine lactone lyase (ZGAL_4600), *Z. galactanivorans* may degrade communication molecules
23 produced by competing bacteria, interfering with their quorum sensing and their ability to form
24 biofilms (Huang et al., 2006). Finally, *Z. galactanivorans* has a PL9_4 (ZGAL_3183) homologous to
25 DssA from *Paenibacillus koleovorans* TB^T, which degrades the sheath polysaccharide from

1 *Sphaerotilus natans* (Takeda et al., 2000). Thus *Z. galactanivorans* may attack the EPS of other
2 bacteria as a counter-defense mechanism.

3 ***Carbohydrate catabolism in marine heterotrophic bacteria depends on habitat and taxon***

4 The growing number of MHB genomes from diverse taxa offers a great opportunity to assess their
5 potential roles as carbohydrate recyclers in various environments, although this has rarely been
6 studied systematically. We compared the number of GH, PL and sulfatases in MHB genomes
7 according to either taxonomy or habitat (Fig. 4). Marine *Bacteroidetes* have been ascribed a pivotal
8 role in polymer degradation (Kirchman, 2002; Bauer et al., 2006; Thomas et al., 2011b). Accordingly,
9 their GH, PL and sulfatase genomic content was on average significantly higher than in *Alpha-* and
10 *Gammaproteobacteria* (Fig. 4 A-C). However, these averages mask a substantial inter-species
11 variability, with several *Bacteroidetes* representatives being very poor in CAZymes (e.g. *Owenweeksia*
12 *hongkongensis* UST20020801^T, *Croceibacter atlanticus* HTCC2559^T) and two extreme outliers with
13 high values (*Z. galactanivorans*, *Zunongwangia profunda*) (Table S1). Therefore, the role of marine
14 *Bacteroidetes* as polysaccharide degrading specialists cannot be generalized at the phylum level. In
15 comparison, the CAZyme genomic content of *Gammaproteobacteria* appears relatively homogenous
16 (Fig. 4 A-C). The gammaproteobacterium with the highest CAZyme frequencies, *Pseudoalteromonas*
17 *atlantica* T6c (GH=66, PL=5, sulfatases=18, Table S1), has a lower degradation potential than the
18 corresponding upper echelon of the *Bacteroidetes*. *Alphaproteobacteria* constitute a very
19 homogenous group, and their average CAZyme repertoire is limited (GH=19, PL=1, sulfatases=3).
20 Interestingly *Pelagibacter ubique* HTCC1062 and *Pelagibacter* sp. IMCC9063, which belong to the
21 most abundant group of MHB (SAR11 clade, Giovannoni et al., 2005), exhibit the poorest
22 polysaccharide degradation capacity (GH=4, PL=0, sulfatase=0 and GH=5, PL=0, sulfatase=0,
23 respectively). Most of the GH of these bacteria are involved in the modification of their own
24 peptidoglycans (GH23, GH73 and GH103, Table S1). Thus the SAR11 *Alphaproteobacteria* appear to
25 play no significant role in the degradation of marine polysaccharides.

1 We tested the effect of habitat on the CAZyme gene repertoire of MHB (Fig. 4 D-F). Bacteria
2 from macrophytes had the highest mean values (GH=53, PL=5, sulfatase=17), although the large
3 variability among distinct species precludes statistical significance. It is worth noting that
4 *Z. galactanivorans* appears as an outlier even in this population. By contrast, phytoplankton-
5 associated bacteria had similar profiles, but with lower median and mean values and a lower
6 variance. This richness in CAZyme genes is likely related to the diversity of neutral, uronic and
7 sulfated polysaccharides that marine photosynthetic organisms produce. The differences between
8 the habitats “Macrophytes” and “Phytoplankton” likely reflects differences in the diversity and
9 complexity of polysaccharides between more complex multicellular macrophytes with tissue
10 differentiation (Popper et al., 2011) and more uniform unicellular phytoplankton species. Animal-
11 associated MHB on the other hand constitute a more even group with lower overall degradation
12 capacities. Surprisingly, members of this group possess very few sulfatases (Fig. 4F), although animal
13 extracellular matrices include sulfated glycosaminoglycans (GAG) (Jackson et al., 1991). Nonetheless,
14 animal pathogens do not necessarily degrade GAG, as shown by the freshwater fish pathogen
15 *Flavobacterium psychrophilum* JIP02/86, which has very few GH and no PL or sulfatase genes
16 (Duchaud et al., 2007). Bacteria isolated from surface seawater and sediments displayed rather
17 uniform and moderate CAZyme repertoires. A commonality of both habitats is that they receive algal
18 and animal debris. A large repertoire of carbohydrate binding modules, endo-polysaccharidases, of
19 exo-glycosidases and of modifying enzymes such as carbohydrate esterases and sulfatases is needed
20 to degrade the mostly insoluble complex polysaccharides present in cell walls. This is well known for
21 plants (Gilbert et al., 2008) and has recently also been shown for algal cell walls (Hehemann et al.,
22 2012; Thomas et al., 2012; Thomas et al., 2013; Labourel et al., 2014; Labourel et al., 2015; Jam et al.,
23 2016). By this initial attack the matrix is loosened and a wide array of less complex soluble
24 oligosaccharides is released into the seawater. The bacteria utilizing these oligosaccharides and the
25 predigested algal cell walls thus require fewer types of enzymes and therefore feature a smaller and
26 less diverse repertoire of CAZymes and sulfatases. Nonetheless the habitat “Surface seawater”

1 includes extreme outliers: e.g. *Simiduia agarivorans* SA1^T (PL=14, Fig. 4E), *Coraliomargarita*
2 *akajimensis* 04OKA010-24^T (sulfatases=49), *R. baltica* (sulfatases=112, Fig. 4F). A possible explanation
3 is that “Surface seawater” is not only a habitat by itself but also a transitory environment for some
4 MHB. Indeed, *Planctomycetes* are abundant on kelps (Bengtsson et al., 2012) and *S. agarivorans*, as
5 an agarolytic bacterium (Lin et al., 2012), probably also lives on red macroalgae. PL and sulfatase
6 repertoires of MHB isolated from deep marine sediments are poor (Fig. 4E, F), but more variable
7 regarding GH (Fig. 4D). Even potent degraders from this habitat have very few PL and sulfatases
8 (*Verrucosispora maris* AB-18-032^T: GH=99, PL=4, sulfatase=0; *Zunongwangia profunda*: GH=125,
9 PL=0, sulfatase=6, Table S1). This preference for neutral polysaccharides is likely related to the
10 enzymatic processes affecting organic particles throughout their sinking from surface to ocean
11 interior (Azam and Malfatti, 2007). Considering the richness in PL and sulfatases of algae-associated
12 bacteria, uronic and sulfated polysaccharides should be mainly decomposed directly on algal hosts
13 and in surface seawater, while deep sediments likely receive organic particles enriched in the most
14 recalcitrant polysaccharides (e.g. cellulose, chitin). MHB from deep seawater constitute a very
15 homogenous group in terms of CAZyme genes with repertoires resembling those of bacteria isolated
16 from deep marine sediments, which indicates that both may receive similar polysaccharide
17 substrates. Finally, hydrothermal vent bacteria constitute the group with the least CAZyme genes and
18 the lowest CAZyme variance. This suggests that polysaccharide utilization is less crucial for MHB at
19 hydrothermal vents where chemolithoautotrophic primary production predominates. In Table S9 we
20 evaluate the combined influence of taxonomy and habitat on the mean carbohydrate-associated
21 genetic repertoire of the 126 MHB. The resulting tendencies that we observed appear to be additive,
22 that is they were either amplified (e.g. “rich bacterial group” and “rich habitat”) or attenuated (e.g.
23 “rich bacterial group” and “poor habitat”). For instance, *Bacteroidetes* species (“rich group”) living on
24 macrophytes (“rich habitat”) display indeed the highest gene numbers, while *Bacteroidetes* from
25 marine sediments or deep seawaters (“poorer habitats”) exhibited lower capacities. Moreover,
26 bacteria from the same habitat but from different taxa did not display similar potentials and thus

1 likely occupy distinct ecological niches. On macrophytes and phytoplankton, *Bacteroidetes* have a
2 richer repertoire than *Alpha*- and *Gammaproteobacteria*. Thus, these *Proteobacteria* could be
3 scavengers, partially feeding on oligosaccharides released by *Bacteroidetes*. Accordingly,
4 *Bacteroidetes* are the first group of bacterioplankton that profit from diatom blooms, followed later
5 by *Proteobacteria*, suggesting a sequential degradation of algal-derived compounds (Teeling et al.,
6 2012; Teeling et al., 2016).

7 To refine the prediction of the ecological roles of MHB, we performed a double-clustering
8 analysis of the 126 MHB and their enzymatic repertoires (Fig. S3). Such an approach was already
9 successfully used for terrestrial fungal degraders (Couturier et al., 2012). Strikingly, most protein
10 clades (carbohydrate-related group, CRG) encompass (sub)families predicted to act in similar
11 pathways, based on current literature, allowing substrate prediction for 17 CRG. For instance, CRG7
12 (GH13_9_GlgB, GT5, GH13_11_GlgX, CBM48, GH77, GT35) and CRG10 (GH28, GH105, PL1, CE8, CE12)
13 are predicted to be specific for the metabolism of endogenous glycogen and for pectin catabolism,
14 respectively. Thus co-occurrence of some (sub)families in the 126 MHB carries sufficient information
15 to group biologically-related families. The relevance of using subfamilies for polyspecific families is
16 also illustrated. GH16 enzymes are scattered in different CRGs: laminarinases in CRG11 and kappa-
17 carrageenases, beta-agarases and beta-porphyranses in CRG15. This clustering approach can also be
18 a powerful tool to identify missing enzymes in incomplete pathways. CRG15 is certainly specific for
19 the degradation of red algal sulfated galactans (agars and carrageenans), since it includes the above-
20 mentioned GH16 kappa-carrageenases, beta-agarases and beta-porphyranses, the GH117 enzymes
21 to complete agar degradation (Rebuffet et al., 2011), and five subfamilies of sulfatases (S1_15,
22 S1_19, S1_25, S1_28, S1_29). These latter subfamilies are currently uncharacterized and thus
23 constitute promising candidates for identifying agar- and carrageenan-specific sulfatases.

24 This clustering determined 15 bacterial groups (BG), most likely corresponding to specific
25 ecological functions. For instance, BG3 corresponds to a “super-degrader” group, notably including
26 *Z. galactanivorans*, *F. agarilytica*, *Zunongwangia profunda*, *P. atlantica*, *R. baltica* and *C. akajimensis*.

1 This clade encompasses bacteria of distinct phyla, but no *Alphaproteobacteria*, as expected from the
2 boxplot analysis. BG3 habitats mainly correspond to “Macrophyte” and “Phytoplankton”.
3 Consistently, BG3 bacteria mostly shared richness in sulfatases and in CRG specific for “soft” algal
4 polysaccharides (e.g. laminarin, alginate, sulfated galactans). BG1 and BG15 comprise bacteria
5 specialized for neutral, recalcitrant polysaccharides (mainly cellulose and chitin, respectively). BG1
6 comprises *Actinomycetes* and *Proteobacteria* from sediments, while BG15 only includes
7 *Gammaproteobacteria* from seawater, sediments, or animals. BG7 includes most of the “poorest
8 degraders”: numerous *Alpha*- (including SAR11), *Delta*- and *Epsilonproteobacteria*, but also one
9 *Bacteroidetes* (*Owenweeksia hongkongensi*). Their habitats are essentially seawater, deep marine
10 sediments and hydrothermal vents. Finally, this unsupervised clustering approach emphasizes that
11 species within one genus may have different polysaccharide degradation potentials and occupy
12 distinct glycan niches, as shown for the genera *Alteromonas* (Ivars-Martinez et al., 2008) and
13 *Polaribacter* (Xing et al., 2015). For instance, the “super-degrader” *Pseudoalteromonas atlantica*
14 clusters with BG3, while *Pseudoalteromonas haloplanktis* and *Pseudoalteromonas* sp. SM9913 belong
15 to BG11 and BG15, two groups with limited CAZyme repertoires.

16

17 **Concluding remarks**

18 In-depth genomic analysis and physiological experiments indicate that *Z. galactanivorans* has
19 exceptional capacities to utilize algal polysaccharides. This marine *Bacteroidetes* also displays
20 numerous adaptive traits that enable formation of a profitable, stable association with macroalgae.
21 These results fortify the status of *Z. galactanivorans* as a multifaceted model organism for the study
22 of bacteria-algae interactions. On a more holistic level, our comparative genomic analyses
23 demonstrate that the carbohydrate catabolism of MHB is influenced by phylogeny as well as habitat.
24 As a consequence, clustering analysis of carbohydrate-active enzymes can be used as a predictive
25 tool to assess a bacterial ecological niche within the carbon cycle.

1

2 **Experimental procedures**

3 ***Genome sequencing and annotation***

4 Sequencing of *Z. galactanivorans* genome was undertaken using the same random shotgun approach
5 as described for *Salinibacter ruber* M8 (Peña et al., 2010). Briefly, three clone libraries (A=3 kbp,
6 B=10 kbp, C=25 kbp) were constructed, clones were picked at random, and insert-containing vectors
7 were purified and subsequently end-sequenced (66539 (A), 24704 (B), 10387 (C)) using dye-
8 terminator chemistry on ABI3730 Sanger sequencers (Applied Biosystems, Carlsbad, USA). Assembly
9 was performed as described previously (Vallenet et al., 2008). Additional 410 sequences were
10 needed for finishing, resulting in a fully closed circular chromosome of 5,521,712 bp (42.8% GC).
11 Gene finding and automatic annotation were performed with the GenDB system (Meyer et al., 2003)
12 resulting in the detection of 4,738 protein coding sequences (CDS), 40 tRNA genes and two rRNA
13 operons. GenDB was also used for the manual refinement of the functional annotations of all
14 encoded proteins. Protein localizations were predicted using SignalP 3.0 (Bendtsen et al., 2004),
15 Lipop 1.0 (Juncker et al., 2003) and TMHMM 2.0 (Krogh et al., 2001) with default parameters.
16 Modularity was checked using Pfam (Finn et al., 2016) and taken into account in the annotation.
17 Protein families were also determined using the specialized databases MEROPS (Rawlings et al.,
18 2016) and CAZY (Lombard et al., 2014). Functions were attributed based on the closest characterized
19 homologues. For all polyspecific enzyme families the function was attributed based on phylogenetic
20 trees including the query sequence and characterized homologues, as previously shown (Stam et al.,
21 2006). Proteins were aligned using MAFFT with iterative refinement (FFT-NS-i) using the BLOSUM62
22 scoring matrix (Kato and Standley, 2013). Maximum-likelihood trees were reconstructed in MEGA
23 6.0.6 from manually refined alignments, using 100 bootstraps. The parameters were prior
24 determined using the “Find best protein model (ML)” function (Tamura et al., 2013). The sequence of
25 the *Z. galactanivorans* genome was deposited at EMBL (accession: FP476056).

1 ***Carbohydrate catabolic profiling***

2 Growth of *Z. galactanivorans* was tested in triplicate in the marine mineral medium published by
3 (Thomas et al., 2011a) complemented with a large collection of carbohydrates as sole carbon sources
4 (2 g.L⁻¹, Table S10).

5 ***Extraction and NMR characterization of intracellular polysaccharide***

6 *Z. galactanivorans* was grown at 20°C in 300 mL marine mineral medium (MMM) with 10 g.L⁻¹
7 glucose and 0.2 g.L⁻¹ NH₄Cl. After 3 days, cells were centrifuged for 20 min at 27,000g, 4°C, rinsed
8 twice in filtered seawater (FSW) and stored at -20°C until analysis. Ethanol-insoluble polysaccharides
9 were extracted from cell pellets using a modified procedure from Ernst et al (Ernst et al., 1984).
10 Briefly, cells were boiled for 3 hours in 50% KOH and centrifuged for 10 min at 27,000g. The
11 supernatant was filtered at 0.2 µm and mixed with 3 volumes of ethanol. Insoluble material was
12 recovered by centrifugation, rinsed with 80% ethanol and resuspended in 1 mL ultrapure water.
13 Water was exchanged with D₂O by two freeze-drying cycles. The extract was analyzed by ¹H-NMR at
14 70°C and the spectrum was compared with that of pure glycogen from rabbit liver (Zang et al., 1991).

15

16 ***Quantification of intracellular glycogen content***

17 *Z. galactanivorans* was grown at 20°C in 30 mL MMM containing 10 g.L⁻¹ glucose and 0.2 g.L⁻¹
18 NH₄Cl, in five independent replicate cultures. When stationary phase was reached, cells were
19 centrifuged for 30 min at 4,000g, rinsed in 10 ml FSW, resuspended in 30 mL Marine Mineral
20 Medium (MMM, Thomas et al., 2011a) without carbon source and incubated at 20°C. Aliquots for
21 glycogen quantification (1 mL) were sampled daily for 5 days and after 8 days. Intracellular glycogen
22 content was quantified using an adapted procedure from Parrou and François (Parrou and Francois,
23 1997). Cells were pelleted (5 min at 13,000 g), resuspended in 125 µL 0.25 M Na₂CO₃ and incubated
24 at 98°C for 4 hours. The pH was neutralized by addition of 75 µL 1 M acetic acid and 300 µl 0.2 M
25 sodium acetate pH 5.2. Glycogen was digested by addition of 1.5 µL of amyloglucosidase (final
26 concentration 1.8 mU.mL⁻¹) and incubation overnight at 57°C with agitation. Samples were

1 centrifuged for 5 min at 1,000 **g**. The amount of reducing ends released (RE_{AMG+}) was quantified on 80
2 μ L of supernatant using the ferricyanide assay (Kidby and Davidson, 1973), with duplicate readings of
3 the absorbance at 420 nm, using a standard curve of 0.25-1.5 mM glucose. In parallel, the amount of
4 reducing ends was measured in controls without amyloglucosidase treatment (RE_{AMG-}). Protein
5 content (PC) was measured on 50 μ l of extract using the Bradford method and a standard curve of
6 0.05-1 mg.mL⁻¹ bovine serum albumin. For each extract, glycogen content was expressed in nmol eq.
7 glucose per mg of protein according to the following equation:

$$8 \quad \text{glycogen content} = \frac{RE_{AMG+} - RE_{AMG-}}{PC}$$

9 ***Visualization of intracellular glycogen by transmission electron microscopy***

10 *Z. galactanivorans* was grown in excess glucose/limited nitrogen and subsequently transferred to
11 minimum medium without carbon source as described above. Aliquots (1 mL) were sampled before
12 transfer and 6 days after the transfer. Samples were centrifuged 5 min at 14,000**g**, rinsed in 1 mL
13 FSW and fixed with 4% glutaraldehyde, 0.25 M sucrose in 0.2 M sodium cacodylate buffer (SCB) for 3
14 hours, followed by successive washing steps in SCB containing: 0.25 M sucrose and 0.22 M NaCl (one
15 week); 0.15 M sucrose and 0.27 M NaCl (10 min); 0.05 M sucrose and 0.33 M NaCl (10 min); 0.35 M
16 NaCl (10 min). Samples were post-fixed with 1.5% osmium tetroxide, 0.35 M NaCl in SCB for 1 h at
17 4°C and rinsed three times in SCB, 0.35 M NaCl before dehydration in graded ethanol series (30, 50,
18 70, 90, 100% (v/v), twice for 15 min each). Samples were transferred to propylene oxide and
19 progressively embedded in Epon (25% (v/v) for 1 h; 75% overnight; 100% twice for 24 h), followed by
20 a change of fresh Epon and polymerization 48 h at 60°C. Thin sections were stained with uranyl
21 acetate and lead citrate and viewed on a JEOL JEM-1400 transmission electron microscope (JEOL,
22 Tokyo, Japan) equipped with a Gatan Orius camera (Gatan France, Evry, France).

23

24 ***Measurement of iodine intracellular concentration***

25 *Z. galactanivorans* and *P. haloplanktis* were grown in triplicate in ZoBell medium during 4 days at
26 20°C. After centrifugation, each cell pellet was freeze-dried, together with 20 mL of the

1 corresponding supernatant and sterile ZoBell medium as controls. Powder samples were used to
2 determine total iodine contents at the Département d'Analyse Élémentaire, Service Central
3 d'Analyses, Centre National de la Recherche Scientifique (Vernaison, France). After complete
4 combustion in a Schöniger flask, the sample ashes were analyzed using anion-exchange
5 chromatography, with UV detection for iodide. The detection limit was 2 µg of iodine per g of dried
6 weight sample.

7 ***Comparative genomics***

8 We compared the predicted capacities for carbohydrate degradation of *Z. galactanivorans* to that of
9 other MHB. To have reliable and comparable annotations, we only took marine bacteria present in
10 the CAZY database (<http://www.cazy.org/b.html>, Lombard et al., 2014) as of July 2015. In total 125
11 MHB were identified, and their isolation sources were determined by literature searches (Table S11).
12 The genome sequences of these MHB are mainly high-quality draft and a few are completely closed
13 (Lombard et al., 2010). Sulfatases were found in 63 MHB and the subfamilies of the 594 identified
14 sulfatases were determined by phylogenetic analysis (Fig. S1) and in accordance with the recently
15 published sulfatase classification database SulfAtlas (<http://abims.sb-roscoff.fr/sulfatlas>) (Barbeyron
16 et al., 2016). For each genome (Table S1), we reported the number of genes per (sub)family of
17 glycoside hydrolases (GH), glycosyltransferases (GT), polysaccharide lyases (PL), carbohydrate
18 esterases (CE), carbohydrate binding modules (CBM) (based on the assignment of the CAZY database)
19 and of sulfatases (based on our phylogenetic analysis, FigS1, and on the SulfAtlas database). The
20 effect of habitat or taxonomy on the number of GH, PL and sulfatases per genome was tested with
21 generalized linear mixed model in R 3.3.2 using a negative binomial distribution, followed by Tukey's
22 pairwise comparisons with Benjamini-Hochberg correction for multiple testing. This analysis was
23 represented as boxplots (Fig. 4). A cluster analysis was computed from a matrix with numbers of
24 genes per family of GH, PL, CE and CBM, in the families GT5 and GT35 (endogenous glycogen
25 metabolism) and per (sub)families of sulfatases (Table S12), in which highly polyspecific families
26 (GH5, GH13, GH16, GH30) were replaced by their CAZY subfamilies for better resolution. Since the

1 GH16 family has not been officially subdivided yet, we defined substrate subfamilies based on
2 phylogeny (Fig. S4) as previously shown (Barbeyron et al., 1998). This matrix was clustered per
3 genome and per (sub)family with Cluster 3.0 (de Hoon et al., 2004). The (sub)family data were
4 centered on the mean. The clustering method was “average linkage” using uncentered correlation
5 for genome and (sub)family data.

6 **Conflict of Interest**

7 The authors declare no conflict of interest.

8 **Acknowledgements**

9 TB, FT, MC and GM are grateful for support by the French Government through the National
10 Research Agency with regard to the “Blue Enzymes” ANR project (reference ANR-14-CE19-0020-01).
11 HT, FOG and RA acknowledge support by the Max Planck Society. This work was supported in part by
12 funding from the Consortium National de Recherche en Génomique (CNRG) to Genoscope and from
13 the EU FP6 Network of Excellence (NoE) “Marine Genomics Europe”. We thank Sophie Le Panse
14 (Platform MERIMAG, SBR, FR2424, Roscoff, France) and Nelly Kervarec (NMR core service, UBO,
15 Brest, France) for their help with electron microscopy and NMR analyses, respectively. We are
16 grateful to Corinne Michel for her artistic drawing of Fig. 3.

17 **References**

- 18 Alonso, C., Warnecke, F., Amann, R., and Pernthaler, J. (2007) High local and global diversity of
19 *Flavobacteria* in marine plankton. *Environ Microbiol* **9**: 1253-1266.
20 Andrykovitch, G., and Marx, I. (1988) Isolation of a new polysaccharide-digesting bacterium from a
21 salt marsh. *Appl Environ Microbiol* **54**: 1061-1062.
22 Aspeborg, H., Coutinho, P.M., Wang, Y., Brumer, H., 3rd, and Henrissat, B. (2012) Evolution, substrate
23 specificity and subfamily classification of glycoside hydrolase family 5 (GH5). *BMC Evol Biol* **12**: 186.
24 Azam, F., and Malfatti, F. (2007) Microbial structuring of marine ecosystems. *Nat Rev Microbiol* **5**:
25 782-791.
26 Ball, S.G., and Morell, M.K. (2003) From bacterial glycogen to starch: understanding the biogenesis of
27 the plant starch granule. *Annu Rev Plant Biol* **54**: 207-233.
28 Barbeyron, T., Gerard, A., Potin, P., Henrissat, B., and Kloareg, B. (1998) The kappa-carrageenase of
29 the marine bacterium *Cytophaga drobachiensis*. Structural and phylogenetic relationships within
30 family-16 glycoside hydrolases. *Mol Biol Evol* **15**: 528-537.

1 Barbeyron, T., L'Haridon, S., Corre, E., Kloareg, B., and Potin, P. (2001) *Zobellia galactanovorans* gen.
2 nov., sp. nov., a marine species of *Flavobacteriaceae* isolated from a red alga, and classification of. *Int*
3 *J Syst Evol Microbiol* **51**: 985-997.

4 Barbeyron, T., Brillet-Guéguen, L., Carré, W., Carrière, C., Caron, C., Czjzek, M. et al. (2016) Matching
5 the diversity of sulfated biomolecules: creation of a classification database for sulfatases reflecting
6 their substrate specificity. *PLoS One* **in the press**.

7 Bauer, M., Kube, M., Teeling, H., Richter, M., Lombardot, T., Allers, E. et al. (2006) Whole genome
8 analysis of the marine *Bacteroidetes* '*Gramella forsetii*' reveals adaptations to degradation of
9 polymeric organic matter. *Environ Microbiol* **8**: 2201-2213.

10 Bendtsen, J.D., Nielsen, H., von Heijne, G., and Brunak, S. (2004) Improved prediction of signal
11 peptides: SignalP 3.0. *J Mol Biol* **340**: 783-795.

12 Bengtsson, M.M., Sjtun, K., Lanzen, A., and Ovreas, L. (2012) Bacterial diversity in relation to
13 secondary production and succession on surfaces of the kelp *Laminaria hyperborea*. *ISME J* **6**: 2188-
14 2198.

15 Bjursell, M.K., Martens, E.C., and Gordon, J.I. (2006) Functional genomic and metabolic studies of the
16 adaptations of a prominent adult human gut symbiont, *Bacteroides thetaiotaomicron*, to the suckling
17 period. *J Biol Chem* **281**: 36269-36279.

18 Buchan, A., LeClerc, G.R., Gulvik, C.A., and González, J.M. (2014) Master recyclers: features and
19 functions of bacteria associated with phytoplankton blooms. *Nat Rev Microbiol* **12**: 686-698.

20 Colin, C., Leblanc, C., Michel, G., Wagner, E., Leize-Wagner, E., Van Dorselaer, A., and Potin, P.
21 (2005) Vanadium-dependent iodoperoxidases in *Laminaria digitata*, a novel biochemical function
22 diverging from brown algal bromoperoxidases. *Journal of Biological Inorganic Chemistry* **10**: 156-166.

23 Cosse, A., Leblanc, C., and Potin, P. (2007) Dynamic defense of marine macroalgae against pathogens:
24 from early activated to gene-regulated responses. *Adv Bot Res* **46**: 221-266.

25 Couturier, M., Navarro, D., Olive, C., Chevret, D., Haon, M., Favel, A. et al. (2012) Post-genomic
26 analyses of fungal lignocellulosic biomass degradation reveal the unexpected potential of the plant
27 pathogen *Ustilago maydis*. *BMC Genomics* **13**: 57.

28 Crane, B.R., Sudhamsu, J., and Patel, B.A. (2010) Bacterial nitric oxide synthases. *Annu Rev Biochem*
29 **79**: 445-470.

30 de Hoon, M.J., Imoto, S., Nolan, J., and Miyano, S. (2004) Open source clustering software.
31 *Bioinformatics* **20**: 1453-1454.

32 Duchaud, E., Boussaha, M., Loux, V., Bernardet, J.F., Michel, C., Kerouault, B. et al. (2007) Complete
33 genome sequence of the fish pathogen *Flavobacterium psychrophilum*. *Nat Biotechnol* **25**: 763-769.

34 Egan, S., Harder, T., Burke, C., Steinberg, P., Kjelleberg, S., and Thomas, T. (2013) The seaweed
35 holobiont: understanding seaweed-bacteria interactions. *FEMS Microbiol Rev* **37**: 462-476.

36 Ernst, A., Kirschenlohr, H., Diez, J., and Böger, P. (1984) Glycogen content and nitrogenase activity in
37 *Anabaena variabilis*. *Arch Microbiol* **140**: 120-125.

38 Ferguson, A.D., Hofmann, E., Coulton, J.W., Diederichs, K., and Welte, W. (1998) Siderophore-
39 mediated iron transport: crystal structure of FhuA with bound lipopolysaccharide. *Science* **282**: 2215-
40 2220.

41 Ficko-Blean, E., Duffieux, D., Rebuffet, E., Larocque, R., Groisillier, A., Michel, G., and Czjzek, M.
42 (2015a) Biochemical and structural investigation of two paralogous glycoside hydrolases from
43 *Zobellia galactanivorans*: novel insights into the evolution, dimerization plasticity and catalytic
44 mechanism of the GH117 family. *Acta Crystallogr D* **71**: 209-223.

45 Ficko-Blean, E., Hervé, C., and Michel, G. (2015b) Sweet and sour sugars from the sea: the
46 biosynthesis and remodeling of sulfated cell wall polysaccharides from marine macroalgae. *Perspect*
47 *Phycol* **2**: 51-64.

48 Field, C.B., Behrenfeld, M.J., Randerson, J.T., and Falkowski, P. (1998) Primary production of the
49 biosphere: integrating terrestrial and oceanic components. *Science* **281**: 237-240.

50 Finn, R.D., Coggill, P., Eberhardt, R.Y., Eddy, S.R., Mistry, J., Mitchell, A.L. et al. (2016) The Pfam
51 protein families database: towards a more sustainable future. *Nucleic Acids Res* **44**: D279-285.

1 Fournier, J.B., Rebuffet, E., Delage, L., Grijol, R., Meslet-Cladiere, L., Rzonca, J. et al. (2014) The
2 Vanadium Iodoperoxidase from the marine flavobacteriaceae species *Zobellia galactanivorans*
3 reveals novel molecular and evolutionary features of halide specificity in the vanadium
4 haloperoxidase enzyme family. *Appl Environ Microbiol* **80**: 7561-7573.

5 Gattuso, J.P., Frankignoulle, M., and Wollast, R. (1998) Carbon and carbonate metabolism in coastal
6 aquatic ecosystems. *Annu Rev Ecol Syst* **29**: 405-434.

7 Gilbert, H.J., Stalbrand, H., and Brumer, H. (2008) How the walls come crumbling down: recent
8 structural biochemistry of plant polysaccharide degradation. *Curr Opin Plant Biol* **11**: 338-348.

9 Giovannoni, S.J., Tripp, H.J., Givan, S., Podar, M., Vergin, K.L., Baptista, D. et al. (2005) Genome
10 streamlining in a cosmopolitan oceanic bacterium. *Science* **309**: 1242-1245.

11 Glöckner, F.O., Kube, M., Bauer, M., Teeling, H., Lombardot, T., Ludwig, W. et al. (2003) Complete
12 genome sequence of the marine planctomycete *Pirellula* sp. strain 1. *Proc Natl Acad Sci USA* **100**:
13 8298-8303.

14 Groisillier, A., Shao, Z., Michel, G., Goulitquer, S., Bonin, P., Krahulec, S. et al. (2014) Mannitol
15 metabolism in brown algae involves a new phosphatase family. *J Exp Bot* **65**: 559-570.

16 Groisillier, A., Labourel, A., Michel, G., and Tonon, T. (2015) The mannitol utilization system of the
17 marine bacterium *Zobellia galactanivorans*. *Appl Environ Microbiol* **81**: 1799-1812.

18 Hahnke, R.L., and Harder, J. (2013) Phylogenetic diversity of *Flavobacteria* isolated from the North
19 Sea on solid media. *Syst Appl Microbiol* **36**: 497-504.

20 Hanson, R.S., and Hanson, T.E. (1996) Methanotrophic bacteria. *Microbiol Rev* **60**: 439-471.

21 Hehemann, J.H., Correc, G., Barbeyron, T., Helbert, W., Czjzek, M., and Michel, G. (2010) Transfer of
22 carbohydrate-active enzymes from marine bacteria to Japanese gut microbiota. *Nature* **464**: 908-912.

23 Hehemann, J.H., Correc, G., Thomas, F., Bernard, T., Barbeyron, T., Jam, M. et al. (2012) Biochemical
24 and Structural Characterization of the Complex Agarolytic Enzyme System from the Marine
25 Bacterium *Zobellia galactanivorans*. *J Biol Chem* **287**: 30571-30584.

26 Hehemann, J.H., Boraston, A.B., and Czjzek, M. (2014) A sweet new wave: structures and
27 mechanisms of enzymes that digest polysaccharides from marine algae. *Curr Opin Struct Biol* **28**: 77-
28 86.

29 Hoagland, K.D., Rosowski, J.R., Gretz, M.R., and Roemer, S.C. (1993) Diatom extracellular polymeric
30 substances: function, fine structure, chemistry, and physiology. *J Phycol* **29**: 537-566.

31 Hollants, J., Leliaert, F., De Clerck, O., and Willems, A. (2013) What we can learn from sushi: a review
32 on seaweed-bacterial associations. *FEMS Microbiol Ecol* **83**: 1-16.

33 Huang, J.J., Petersen, A., Whiteley, M., and Leadbetter, J.R. (2006) Identification of QuiP, the product
34 of gene PA1032, as the second acyl-homoserine lactone acylase of *Pseudomonas aeruginosa* PAO1.
35 *Appl Environ Microbiol* **72**: 1190-1197.

36 Ivars-Martinez, E., Martin-Cuadrado, A.B., D'Auria, G., Mira, A., Ferriera, S., Johnson, J. et al. (2008)
37 Comparative genomics of two ecotypes of the marine planktonic copiotroph *Alteromonas macleodii*
38 suggests alternative lifestyles associated with different kinds of particulate organic matter. *ISME J* **2**:
39 1194-1212.

40 Jackson, R.L., Busch, S.J., and Cardin, A.D. (1991) Glycosaminoglycans: molecular properties, protein
41 interactions, and role in physiological processes. *Physiol Rev* **71**: 481-539.

42 Jam, M., Flament, D., Allouch, J., Potin, P., Thion, L., Kloareg, B. et al. (2005) The endo-beta-agarases
43 AgaA and AgaB from the marine bacterium *Zobellia galactanivorans*: two paralogous enzymes with
44 different molecular organizations and catalytic behaviours. *Biochem J* **385**: 703-713.

45 Jam, M., Ficko-Blean, E., Labourel, A., Larocque, R., Czjzek, M., and Michel, G. (2016) Unraveling the
46 multivalent binding of a marine family 6 carbohydrate-binding module with its native laminarin
47 ligand. *FEBS J* **283**: 1863-1879.

48 Juncker, A.S., Willenbrock, H., Von Heijne, G., Brunak, S., Nielsen, H., and Krogh, A. (2003) Prediction
49 of lipoprotein signal peptides in Gram-negative bacteria. *Protein Sci* **12**: 1652-1662.

50 Katoh, K., and Standley, D.M. (2013) MAFFT multiple sequence alignment software version 7:
51 improvements in performance and usability. *Mol Biol Evol* **30**: 772-780.

1 Kidby, D.K., and Davidson, D.J. (1973) A convenient ferricyanide estimation of reducing sugars in the
2 nanomole range. *Anal Biochem* **55**: 321-325.

3 Kirchman, D.L. (2002) The ecology of *Cytophaga-Flavobacteria* in aquatic environments. *FEMS*
4 *Microbiol Ecol* **39**: 91-100.

5 Kloareg, B., and Quatrano, R.S. (1988) Structure of the cell walls of marine algae and ecophysiological
6 functions of the matrix polysaccharides. *Oceanogr Mar Biol Ann Rev* **26**: 259-315.

7 Koebnik, R. (2005) TonB-dependent trans-envelope signalling: the exception or the rule? *Trends*
8 *Microbiol* **13**: 343-347.

9 Koropatkin, N.M., Martens, E.C., Gordon, J.I., and Smith, T.J. (2008) Starch catabolism by a prominent
10 human gut symbiont is directed by the recognition of amylose helices. *Structure* **16**: 1105-1115.

11 Koropatkin, N.M., Cameron, E.A., and Martens, E.C. (2012) How glycan metabolism shapes the
12 human gut microbiota. *Nat Rev Microbiol* **10**: 323-335.

13 Kremer, B.P. (1980) Taxonomic implications of algal photoassimilate patterns. *Eur J Phycol* **15**: 399-
14 409.

15 Krogh, A., Larsson, B., von Heijne, G., and Sonnhammer, E.L. (2001) Predicting transmembrane
16 protein topology with a hidden Markov model: application to complete genomes. *J Mol Biol* **305**:
17 567-580.

18 Kumar, A., Castellano, I., Patti, F.P., Palumbo, A., and Buia, M.C. (2015) Nitric oxide in marine
19 photosynthetic organisms. *Nitric oxide* **47**: 34-39.

20 Küpper, F.C., Schweigert, N., Ar Gall, E., Legendre, J.-M., Vilter, H., and Kloareg, B. (1998) Iodine
21 uptake in *Laminariales* involves extracellular, haloperoxidase-mediated oxidation of iodide. *Planta*
22 **207**: 163-171.

23 Labourel, A., Jam, M., Jeudy, A., Hehemann, J.H., Czjzek, M., and Michel, G. (2014) The β -glucanase
24 *ZgLamA* from *Zobellia galactanivorans* evolved a bent active site Adapted for efficient degradation of
25 algal laminarin. *J Biol Chem* **289**: 2027-2042.

26 Labourel, A., Jam, M., Legentil, L., Sylla, B., Hehemann, J.H., Ferrieres, V. et al. (2015) Structural and
27 biochemical characterization of the laminarinase *ZgLamC_{GH16}* from *Zobellia galactanivorans* suggests
28 preferred recognition of branched laminarin. *Acta Crystallogr D* **71**: 173-184.

29 Lahaye, M., and Rochas, C. (1991) Chemical structure and physico-chemical properties of agar.
30 *Hydrobiologia* **221**: 137-148.

31 Lin, B., Lu, G., Li, S., Hu, Z., and Chen, H. (2012) Draft genome sequence of the novel agarolytic
32 bacterium *Aquimarina agarilytica* ZC1. *J Bacteriol* **194**: 2769.

33 Loferer-Krossbacher, M., Klima, J., and Psenner, R. (1998) Determination of bacterial cell dry mass by
34 transmission electron microscopy and densitometric image analysis. *Appl Environ Microbiol* **64**: 688-
35 694.

36 Lombard, V., Bernard, T., Rancurel, C., Brumer, H., Coutinho, P.M., and Henrissat, B. (2010) A
37 hierarchical classification of polysaccharide lyases for glycogenomics. *Biochem J* **432**: 437-444.

38 Lombard, V., Golaconda Ramulu, H., Drula, E., Coutinho, P.M., and Henrissat, B. (2014) The
39 carbohydrate-active enzymes database (CAZy) in 2013. *Nucleic Acids Res* **42**: D490-495.

40 Luque-Almagro, V.M., Gates, A.J., Moreno-Vivian, C., Ferguson, S.J., Richardson, D.J., and Roldan,
41 M.D. (2011) Bacterial nitrate assimilation: gene distribution and regulation. *Biochem Soc Trans* **39**:
42 1838-1843.

43 Malis Arad, S. (1988) Production of polysaccharides from red unicellular algae. In *Algal*
44 *Biotechnology*. London: Elsevier Applied Science, pp. 65-87.

45 Martin, M., Portetelle, D., Michel, G., and Vandenberg, M. (2014) Microorganisms living on
46 macroalgae: diversity, interactions, and biotechnological applications. *Appl Microbiol Biotechnol* **98**:
47 2917-2935.

48 Martin, M., Barbeyron, T., Martin, R., Portetelle, D., Michel, G., and Vandenberg, M. (2015) The
49 Cultivable Surface Microbiota of the Brown Alga *Ascophyllum nodosum* is Enriched in Macroalgal-
50 Polysaccharide-Degrading Bacteria. *Front Microbiol* **6**: 1487.

1 Marzinelli, E.M., Campbell, A.H., Zozaya Valdes, E., Verges, A., Nielsen, S., Wernberg, T. et al. (2015)
2 Continental-scale variation in seaweed host-associated bacterial communities is a function of host
3 condition, not geography. *Environ Microbiol* **17**: 4078-4088.

4 Matsuo, Y., Suzuki, M., Kasai, H., Shizuri, Y., and Harayama, S. (2003) Isolation and phylogenetic
5 characterization of bacteria capable of inducing differentiation in the green alga *Monostroma*
6 *oxyspermum*. *Environ Microbiol* **5**: 25-35.

7 Matsuo, Y., Imagawa, H., Nishizawa, M., and Shizuri, Y. (2005) Isolation of an algal morphogenesis
8 inducer from a marine bacterium. *Science* **307**: 1598.

9 McBride, M.J., and Zhu, Y.T. (2013) Gliding Motility and Por Secretion System Genes Are Widespread
10 among Members of the Phylum *Bacteroidetes*. *J Bacteriol* **195**: 270-278.

11 Medigue, C., Krin, E., Pascal, G., Barbe, V., Bernsel, A., Bertin, P.N. et al. (2005) Coping with cold: the
12 genome of the versatile marine Antarctica bacterium *Pseudoalteromonas haloplanktis* TAC125.
13 *Genome Res* **15**: 1325-1335.

14 Meyer, F., Goesmann, A., McHardy, A.C., Bartels, D., Bekel, T., Clausen, J. et al. (2003) GenDB--an
15 open source genome annotation system for prokaryote genomes. *Nucleic Acids Res* **31**: 2187-2195.

16 Michel, G., Tonon, T., Scornet, D., Cock, J.M., and Kloareg, B. (2010) Central and storage carbon
17 metabolism of the brown alga *Ectocarpus siliculosus*: insights into the origin and evolution of storage
18 carbohydrates in Eukaryotes. *New Phytol* **188**: 67-81.

19 Michel, G., and Czjzek, M. (2013) Polysaccharide-degrading enzymes from marine bacteria. In *Marine*
20 *enzymes for biocatalysis: Sources, biocatalytic characteristics and bioprocesses of marine enzymes*.
21 Trincone, A. (ed). Cambridge, UK: Woodhead Publishing Limited, pp. 429-464.

22 Nedashkovskaya, O.I., Suzuki, M., Vancanneyt, M., Cleenwerck, I., Lysenko, A.M., Mikhailov, V.V., and
23 Swings, J. (2004) *Zobellia amurskyensis* sp. nov., *Zobellia laminariae* sp. nov. and *Zobellia russellii* sp.
24 nov., novel marine bacteria of the family *Flavobacteriaceae*. *Int J Syst Evol Microbiol* **54**: 1643-1648.

25 Ogawa, K., Akagawa, E., Yamane, K., Sun, Z.W., LaCelle, M., Zuber, P., and Nakano, M.M. (1995) The
26 *nasB* operon and *nasA* gene are required for nitrate/nitrite assimilation in *Bacillus subtilis*. *J Bacteriol*
27 **177**: 1409-1413.

28 Page, R.D. (1996) TreeView: an application to display phylogenetic trees on personal computers.
29 *Comput Appl Biosci* **12**: 357-358.

30 Parrou, J.L., and Francois, J. (1997) A simplified procedure for a rapid and reliable assay of both
31 glycogen and trehalose in whole yeast cells. *Anal Biochem* **248**: 186-188.

32 Peña, A., Teeling, H., Huerta-Cepas, J., Santos, F., Yarza, P., Brito-Echeverria, J. et al. (2010) Fine-scale
33 evolution: genomic, phenotypic and ecological differentiation in two coexisting *Salinibacter ruber*
34 strains. *ISME J* **4**: 882-895.

35 Popper, Z.A., Michel, G., Herve, C., Domozych, D.S., Willats, W.G., Tuohy, M.G. et al. (2011) Evolution
36 and diversity of plant cell walls: from algae to flowering plants. *Annu Rev Plant Biol* **62**: 567-590.

37 Poretsky, R.S., Sun, S., Mou, X., and Moran, M.A. (2010) Transporter genes expressed by coastal
38 bacterioplankton in response to dissolved organic carbon. *Environ Microbiol* **12**: 616-627.

39 Potin, P., Sanseau, A., Le Gall, Y., Rochas, C., and Kloareg, B. (1991) Purification and characterization
40 of a new kappa-carrageenase from a marine *Cytophaga*-like bacterium. *Eur J Biochem* **201**: 241-247.

41 Potin, P., Bouarab, K., Salaün, J.-P., Pohnert, G., and Kloareg, B. (2002) Biotic interactions of marine
42 algae. *Curr Opin Plant Biol* **5**: 308-317.

43 Rawlings, N.D., Barrett, A.J., and Finn, R. (2016) Twenty years of the MEROPS database of proteolytic
44 enzymes, their substrates and inhibitors. *Nucleic Acids Res* **44**: D343-350.

45 Rebuffet, E., Groisillier, A., Thompson, A., Jeudy, A., Barbeyron, T., Czjzek, M., and Michel, G. (2011)
46 Discovery and structural characterization of a novel glycosidase family of marine origin. *Environ*
47 *Microbiol* **13**: 1253-1270.

48 Rousvoal, S., Groisillier, A., Dittami, S.M., Michel, G., Boyen, C., and Tonon, T. (2011) Mannitol-1-
49 phosphate dehydrogenase activity in *Ectocarpus siliculosus*, a key role for mannitol synthesis in
50 brown algae. *Planta* **233**: 261-273.

1 Salaun, S., La Barre, S., Dos Santos-Goncalvez, M., Potin, P., Haras, D., and Bazire, A. (2012) Influence
2 of exudates of the kelp *Laminaria digitata* on biofilm formation of associated and exogenous
3 bacterial epiphytes. *Microb Ecol* **64**: 359-369.

4 Schulze, A.D., Alabi, A.O., Tattersall-Sheldrake, A.R., and Miller, K.M. (2006) Bacterial diversity in a
5 marine hatchery: Balance between pathogenic and potentially probiotic bacterial strains.
6 *Aquaculture* **256**: 50-73.

7 Seib, K.L., Wu, H.J., Kidd, S.P., Apicella, M.A., Jennings, M.P., and McEwan, A.G. (2006) Defenses
8 against oxidative stress in *Neisseria gonorrhoeae*: a system tailored for a challenging environment.
9 *Microbiol Mol Biol Rev* **70**: 344-361.

10 Skerratt, J.H., Bowman, J.P., Hallegraef, G.M., James, S., and Nichols, P.D. (2002) Algicidal bacteria
11 associated with blooms of a toxic dinoflagellate in a temperate Australian estuary. *Mar Ecol Prog Ser*
12 **244**: 1-15.

13 Smith, S.V. (1981) Marine Macrophytes as a Global Carbon Sink. *Science* **211**: 838-840.

14 Stam, M.R., Danchin, E.G., Rancurel, C., Coutinho, P.M., and Henrissat, B. (2006) Dividing the large
15 glycoside hydrolase family 13 into subfamilies: towards improved functional annotations of alpha-
16 amylase-related proteins. *Protein Eng Des Sel* **19**: 555-562.

17 Takeda, M., Iohara, K., Shinmaru, S., Suzuki, I., and Koizumi, J.I. (2000) Purification and properties of
18 an enzyme capable of degrading the sheath of *Sphaerotilus natans*. *Appl Environ Microbiol* **66**: 4998-
19 5004.

20 Tamura, K., Stecher, G., Peterson, D., Filipowski, A., and Kumar, S. (2013) MEGA6: Molecular
21 Evolutionary Genetics Analysis version 6.0. *Mol Biol Evol* **30**: 2725-2729.

22 Teeling, H., Fuchs, B.M., Becher, D., Klockow, C., Gardebrecht, A., Bennke, C.M. et al. (2012)
23 Substrate-controlled succession of marine bacterioplankton populations induced by a phytoplankton
24 bloom. *Science* **336**: 608-611.

25 Teeling, H., Fuchs, B.M., Bennke, C.M., Kruger, K., Chafee, M., Kappelmann, L. et al. (2016) Recurring
26 patterns in bacterioplankton dynamics during coastal spring algae blooms. *Elife* **5**: e11888.

27 Thomas, F., Barbeyron, T., and Michel, G. (2011a) Evaluation of reference genes for real-time
28 quantitative PCR in the marine flavobacterium *Zobellia galactanivorans*. *J Microbiol Methods* **84**: 61-
29 66.

30 Thomas, F., Hehemann, J.H., Rebuffet, E., Czjzek, M., and Michel, G. (2011b) Environmental and gut
31 bacteroidetes: the food connection. *Front Microbiol* **2**: 93.

32 Thomas, F., Barbeyron, T., Tonon, T., Genicot, S., Czjzek, M., and Michel, G. (2012) Characterization of
33 the first alginolytic operons in a marine bacterium: from their emergence in marine *Flavobacteriia* to
34 their independent transfers to marine *Proteobacteria* and human gut *Bacteroides*. *Environ Microbiol*
35 **14**: 2379-2394.

36 Thomas, F., Lundqvist, L.C., Jam, M., Jeudy, A., Barbeyron, T., Sandstrom, C. et al. (2013) Comparative
37 characterization of two marine alginate lyases from *Zobellia galactanivorans* reveals distinct modes
38 of action and exquisite adaptation to their natural substrate. *J Biol Chem* **288**: 23021-23037.

39 Vallenet, D., Nordmann, P., Barbe, V., Poiriel, L., Mangenot, S., Bataille, E. et al. (2008) Comparative
40 analysis of *Acinetobacters*: three genomes for three lifestyles. *PLoS One* **3**: e1805.

41 Van de Velde, F. (2008) Structure and function of hybrid carrageenans. *Food Hydrocolloid* **22**: 727-
42 734.

43 Verhaeghe, E.F., Fraysse, A., Guerquin-Kern, J.L., Wu, T.D., Deves, G., Mioskowski, C. et al. (2008)
44 Microchemical imaging of iodine distribution in the brown alga *Laminaria digitata* suggests a new
45 mechanism for its accumulation. *Journal of Biological Inorganic Chemistry* **13**: 257-269.

46 Vorholt, J.A. (2012) Microbial life in the phyllosphere. *Nat Rev Microbiol* **10**: 828-840.

47 Weiner, R.M., Taylor, L.E., 2nd, Henrissat, B., Hauser, L., Land, M., Coutinho, P.M. et al. (2008)
48 Complete genome sequence of the complex carbohydrate-degrading marine bacterium,
49 *Saccharophagus degradans* strain 2-40 T. *PLoS Genet* **4**: e1000087.

50 Xing, P., Hahnke, R.L., Unfried, F., Markert, S., Huang, S., Barbeyron, T. et al. (2015) Niches of two
51 polysaccharide-degrading *Polaribacter* isolates from the North Sea during a spring diatom bloom.
52 *ISME J* **9**: 1410-1422.

1 Zang, L.H., Howseman, A.M., and Shulman, R.G. (1991) Assignment of the ¹H chemical shifts of
2 glycogen. *Carbohydr Res* **220**: 1-9.

3

4 **Figure Legends**

5 **Fig. 1. Examples of Polysaccharide Utilization Loci (PUL) illustrating the PUL diversity in *Z.***

6 ***galactanivorans*.** Genetic organization of three demonstrated carbohydrate-related operons: (A) the

7 alginolytic operons (Thomas et al., 2012) and (B) the mannitol utilization system (Groisillier et al.,

8 2015). (C) The putative laminarin utilization system is divided into three PUL. (D) A PUL including

9 glycoside hydrolase and sulfatase genes and thus predicted to be specific for an uncharacterized

10 sulfated polysaccharide. (E) The putative mannosylglycerate utilization system is the only PUL of

11 *Z. galactanivorans* including a TonB-dependent receptor without an associated *susD*-like gene. Gene

12 function is color-coded: red, glycoside hydrolases (GH) or polysaccharide lyases (PL); orange, other

13 carbohydrate-related genes (e.g. sugar kinase, sugar dehydrogenase); purple, putative regulation

14 factor or signal transduction protein; blue, membrane proteins involved in binding/transport; green,

15 sulfatase; grey, unknown function. The crystal structures of several characterized enzymes from

16 these PUL are also represented: (A) the PL7 alginate lyase AlyA5 (PDB code 4BE3, Thomas et al.,

17 2013); (C) the laminarinases LamA (PDB code 4BOW, Labourel et al., 2014) and LamC (PDB code

18 4CTE, Labourel et al., 2015). Both enzymes include a GH16 catalytic module, but LamC also features

19 an appended laminarin-specific CBM6 (PDB code 5FUI, Jam et al., 2016). (D) the GH117 ZGAL_3597

20 (PDB code 4U6B, Ficko-Blean et al., 2015a). Abbreviations: SDR, short chain dehydrogenase; MFS,

21 Major Facility Superfamily transporter; TBDR, TonB-dependent transporter; ABCT, ATP-binding

22 cassette transporter; M2DH, mannitol-2-dehydrogenase; SSS, Solute sodium symporter.

23 **Fig. 2. Visualization of glycogen in *Z. galactanivorans* cells by transmission electron microscopy.**

24 *Z. galactanivorans* was pre-cultured with nitrogen limitation and excess of glucose to stimulate

25 carbon storage and subsequently transferred to minimum medium without carbon source.

26 Representative images are shown for cells observed before (A, B, C) or 6 days after the transfer (D, E,

27 F). Red arrows show examples of glycogen granules. Scale bars = 0.2 μm.

1 **Fig. 3. Scheme of *Z. galactanivorans* interacting with red and brown macroalgae.** A cell of
2 *Z. galactanivorans* (zoomed view) interacting with a red macroalga and a kelp (brown algae). The
3 proteins from *Z. galactanivorans* are displayed in yellow. The compounds specific to red macroalgae,
4 specific to brown macroalgae, and common to both types of macroalgae are displayed in red, orange
5 and green, respectively. The compounds from competing bacteria are shown in purple. The
6 compounds resulting from *Z. galactanivorans* enzymatic processes are displayed in white.
7 Abbreviations: EPS, exopolysaccharide; DssA, sheath polysaccharide lyase (PL9_4); AHL, acetylated
8 homoserine lactone; F6P, fructose-6-phosphate; M2DH, mannitol-2-dehydrogenase; fk,
9 fructokinase; NorBC/NosZ: Nitric oxide reductase / Nitrous oxide reductase; vIPO, vanadium-
10 dependent iodoperoxidase; GH63: GH63 family mannosylglycerate hydrolase; glck, glycerate kinase;
11 M6P: mannose-6-phosphate; 3PG, 3-phospho-glycerate; RuMP cycle, ribulose monophosphate cycle;
12 SOD: superoxide dismutase; AgaA-D: family GH16 β -agarases (from AgaA to AgaD); PorA-E: family
13 GH16 β -porphyranases (from PorA to PorE); AhgA-B: family GH117 α -1,3-(3,6-anhydro)-L-
14 galactosidase AhgA and AhgB; CgkA: family GH16 κ -carrageenase CgkA; CgiA: family GH82 ι -
15 carrageenase (from CgiA1 to CgiA3); LamA-E, family GH16 laminarinases (from LamA to LamD) and
16 family GH64 laminarinase LamE; AlyA1-A7; alginate lyases (PL6: AlyA4 and AlyA6; PL7: AlyA1, AlyA2
17 and AlyA5; PL14: ALyA7; PL17, AlyA3).

18 **Fig. 4. Boxplots of the total number of glycoside hydrolase, polysaccharide lyase and sulfatase-**
19 **encoding-genes in the genomes of 126 marine heterotrophic bacteria available in the CAZY**
20 **database (<http://www.cazy.org/>), grouped according to taxonomy (A, B, C) or habitat (D, E, F).** For
21 statistical robustness, this analysis was restricted to the phylum *Bacteroidetes* and the classes *Alpha-*
22 *and Gammaproteobacteria* as most represented taxa. Black dots and diamonds represent outliers
23 and mean values, respectively. Letters denote significantly different groups (FDR <0.05). The number
24 of bacterial genomes included in the analysis was as follows: Macrophyte (macroalgae and
25 seagrasses), 8; Phytoplankton, 7; Animal, 6; Surface seawater, 42; Deep seawater, 12; Sediment, 20;

1 Deep sediment, 18; Hydrothermal vent, 13; *Alphaproteobacteria*, 18, *Gammaproteobacteria*, 53;
2 *Bacteroidetes*, 21.

3

4 **Fig. S1. Phylogenetic tree of the formylglycine-dependent sulfatases identified in the 126 marine**
5 **heterotrophic bacteria.** The phylogenetic tree was constructed using the maximum likelihood (ML)
6 approach with the program MEGA 6.0.6 (Tamura et al., 2013). Numbers indicate the bootstrap values
7 in the ML analysis (100 bootstraps have been performed). The gene systematic ID and the name of
8 the bacterium is indicated in each sequence label. The sequences marked by red dots correspond to
9 biochemically characterized sulfatases. Each clade has been attributed a subfamily number within
10 the family S1 of sulfatases (formylglycine-dependent sulfatases) in coherence with the SulfAtlas
11 database (<http://abims.sb-roscoff.fr/sulfatlas>) (Barbeyron et al., 2016). The subfamilies containing
12 characterized sulfatases have been attributed the same substrate specificity.

13 **Fig. S2. A.** Proton NMR spectrum of *Z. galactanivorans* intracellular ethanol-insoluble material (50
14 mg.ml⁻¹, at 70°C). The spectrum of pure type III glycogen from rabbit liver (50 mg.ml⁻¹, at 55°C) is
15 shown for comparison (modified from Zang et al., 1991, with the permission of Carbohydrate
16 Research and Elsevier). **B.** Intracellular glycogen content in *Z. galactanivorans*, from 1 to 8 days after
17 transfer to minimum medium without carbon source. Glycogen was quantified by enzymatic
18 hydrolysis using an amyloglucosidase into glucose monomers detected by a reducing sugars assay,
19 and normalized by protein quantity in each extract. Values are mean ± s.e.m. (n=5). Asterisks denote
20 significant difference to Day 1 (paired t-test; *, P<0.05; **, P<0.01).

21 **Fig. S3. Comparison of the repertoires of carbohydrate-related proteins of 126 marine**
22 **heterotrophic bacteria available in the CAZY database using double hierarchical clustering.** The
23 matrix used for this clustering is available as Table S12. Left tree: Bacterial genomes (listed in Table
24 S11). The taxonomy (in magenta) and habitat (in green) of each bacterium is indicated on the right.
25 Taxonomy abbreviations: Ac, Actinobacteria; aP, Alphaproteobacteria, Aq, Aquificae; Ba, Bacteroidetes;
26 Cl, Chlorobi; De, Deinococcus-Thermus, dP, Deltaproteobacteria; eP,

1 Epsilonproteobacteria; Fi, Firmicutes; gP: Gammaproteobacteria; P, Planctomycetes, Td,
2 Thermodesulfobacteria; Tt, Thermotogae; uP, unclassified Proteobacteria; V, Verrucomicrobia.
3 Habitat abbreviations: A, macroalgae-associated; DMS, deep marine sediments; DS: deep seawater;
4 DV, deep hydrothermal vent; MA, marine animal-associated, MS, marine sediments; P,
5 phytoplankton-associated; SS, surface seawater. Based on the clades, 15 bacterial groups (B. group)
6 were defined. Top tree: carbohydrate-related (sub)families (GH, Glycoside hydrolases; PL,
7 Polysaccharide lyases; CE, Carbohydrate esterases; CBM, Carbohydrate binding module; GT5 and
8 GT35, glycosyltransferases from families 5 and 35; S1-n, sulfatase from family S1 (formylglycine-
9 dependent) subfamily n; S3, sulfatase from family 3 (zinc beta-lactamase superfamily). The number
10 of proteins per (sub)families was determined according to the CAZY database (<http://www.cazy.org/>)
11 for the CAZymes and according to Fig. S1 for the sulfatases (in concordance with the SulfAtlas
12 database, <http://abims.sb-roscoff.fr/sulfatlas>). A substrate-specificity was attributed to 17 protein
13 clades, referred to as carbohydrate-related groups (CRG), based on current literature. The values of
14 each column have been centered and are represented according to a blue (negative) – yellow
15 (positive) scale. The clustering was calculated using Cluster 3.0 (de Hoon et al., 2004) and
16 represented by TreeView (Page, 1996).

17 **Fig. S4. Phylogenetic tree of the glycoside hydrolases from family 16 (GH16) identified in the 126**
18 **marine heterotrophic bacteria.** The phylogenetic tree was constructed using the maximum
19 likelihood (ML) approach with the program MEGA 6.0.6 (Tamura et al., 2013). Numbers indicate the
20 bootstrap values in the ML analysis (100 bootstraps have been performed). The sequences marked
21 by black triangles and black dots correspond to biochemically characterized enzymes and to *Z.*
22 *galactanivorans* enzymes, respectively. The sequence labels correspond to the gene systematic ID.
23 For characterized sequences, the label also contains the EC number and the PDB code, when
24 available. Each clade has been attributed a substrate specificity and a EC number based on the
25 presence of characterized enzymes, as previously shown (Barbeyron et al., 1998).

1 **Table S1. Comparison of the repertoires of CAZYmes and of sulfatases of the 126 marine**
2 **heterotrophic bacteria. Worksheet “CAZY repertoire”.** Six protein categories were considered:
3 glycoside hydrolases (GH), glycosyltransferases (GT), polysaccharide lyases (PL), carbohydrate
4 esterases (CE), carbohydrate binding modules (CBM) and sulfatases (S1_n and S3). Per bacterial
5 genome is reported (in each protein category) the number of proteins in each protein (sub)family,
6 the total number of proteins, and the total number of proteins (sub)families. Each cell is colored
7 according to a conditional formatting of its column (three-color scale with blue for 0%, yellow for
8 50%, red for 100%, with the 100% corresponding to the highest number in each column). **Worksheet**
9 **“CAZY summary”.** Various indicators are calculated based on the data of the “CAZY repertoire”
10 worksheet. The bacterial genomes are sorted in decreasing order of total number of GH.

11 **Table S2: Comparison of TonB-dependent receptors (TBDR) gene occurrences in marine**
12 ***Bacteroidetes*.** For each genome, the total number of TBDR genes is indicated and subdivided into
13 TBDR gene next to a *susD*-like gene (SusC-like TBDR) or standalone TBDR gene (FhuA-like TBDR). The
14 ratio of these two categories of TBDR genes (SusC-like/FhuA-like) is given. Each cell is colored
15 according to a conditional formatting of its column (three-color scale with blue for 0%, yellow for
16 50%, red for 100%, with the 100% corresponding to the highest number in each column).

17 **Table S3. List and gene composition of the 50 Polysaccharide Utilization Loci (PUL) of *Zobellia***
18 ***galactanivorans*.** A putative substrate was proposed for each PUL, when possible. The PUL
19 comprising sulfatase genes are colored in green. The TonB-dependent transducers and their
20 associated RNA polymerase ECF-type sigma factor and anti-sigma factor are colored in orange.

21 **Table S4. List of the genes of *Zobellia galactanivorans* involved in carbohydrate degradation.** For
22 each carbohydrate tested as a carbon source (Cf. Table 2) the presence of the genes responsible for
23 its degradation was checked in *Z. galactanivorans* genome. The systematic ID of each homologous
24 gene is indicated.

25 **Table S5. List and gene composition of the 14 gene clusters encompassing glycosyltransferases.**

1 **Table S6. List of the *Flavobacteriia* genera featuring glycogen synthase (GT5), Glucose-1-phosphate**
2 **adenylyltransferase (GlgC), Glycogen phosphorylase (GT35), debranching enzyme GlgX (GH13_11),**
3 **alpha-1,4-gluconotransferase (MalQ).**

4 **Table S7. List of the genes involved in the defense against the reactive species of nitrogen and**
5 **oxygen and in nitrate assimilation.**

6 **Table S8. Total iodine contents of *Pseudoalteromonas haloplanktis* and *Zobellia galactinovorans***
7 **cultures.** The measure were done using biological triplicates.

8 **Table S9. Average number of glycoside hydrolases (GH), polysaccharide lyases (PL) and sulfatases**
9 **(S) of the 126 marine heterotrophic marine bacteria according to their taxonomy and their habitat.**

10 The number of genome in each taxon and in each habitat is indicated between brackets.

11 **Table S10. List of the carbohydrate source used for the catabolic profiling of *Zobellia***
12 ***galactanivorans*.** Commercial provider and reference are indicated for each compound.

13 **Table S11. List of 126 marine heterotrophic bacteria identified in the CAZY database**
14 **(<http://www.cazy.org/>).** For each bacterium is indicated the taxonomic affiliation, the type of

15 marine habitat, the isolation location, the geographic coordinates and the depth (when available),

16 the species name of the associated host (when applicable), the bibliographic reference. It is

17 noteworthy that only bacteria isolated from genuine marine habitats have been selected. For

18 instance, the potent degrader *Saccharophagus degradans* 2-40 has not been considered in this study.

19 Although this bacterium has sometimes been described as a marine bacterium (Weiner et al., 2008),

20 it was in fact isolated from a halophilic land plant (*Spartina alterniflora*) in a salt marsh (Andrykovitch

21 and Marx, 1988). Consistently, *S. degradans* has a repertoire of CAZYmes reminiscent of that of the

22 terrestrial degrader *Cellvibrio japonicus* (Weiner et al., 2008). Its alginate-related genes were also

23 acquired by horizontal gene transfer (Thomas et al., 2012). This bacterium possesses several β -

24 agarases and is able to degrade neutral agarose. However, it features no β -porphyranase and even

25 more significantly no sulfatase, indicating a limited capacity to degrade natural agars which are

26 sulfated.

- 1 **Table S12. Matrix used for the double hierarchical clustering of the 126 marine heterotrophic**
- 2 **bacteria and of their carbohydrate-related proteins.**

- 1 **Table 1. *Zobellia galactanivorans* repertoires of carbohydrate active enzymes, sulfatases and peptidases.** Seven protein categories were considered:
- 2 glycoside hydrolases (GH), glycosyltransferases (GT), polysaccharide lyases (PL), carbohydrate esterases (CE), carbohydrate binding modules (CBM),
- 3 formylglycine-dependent sulfatases (Sulf. S1-) and peptidases (Pept.). The number of proteins (#) is indicated per CAZY family, sulfatase subfamily and
- 4 MEROPS family (highlighted in grey). The total of proteins (T) and of protein families (FT) per protein category is also indicated.

																T	FT
GH	1	2	3	5	9	10	13	15	16	18	20	23	27	28	29	141	44
#	1	9	5	3	1	3	6	2	16	2	4	2	1	2	18		
GH	30	31	33	36	43	63	64	65	73	78	82	88	89	92	95		
#	1	2	1	2	2	1	1	1	1	2	3	2	1	1	7		
GH	97	105	109	110	113	114	115	116	117	120	127	129	130	NC			
#	6	3	1	2	1	1	1	2	6	1	4	1	1	8			
GT	1	2	4	5	9	19	20	28	30	51	83					56	11
#	1	21	18	2	1	1	1	1	1	6	3						
PL	1	6	7	9	12	14	17	NC								15	8
#	2	2	3	2	1	1	1	3									
CE	1	4	6	7	9	11	14	15	NC							18	9
#	5	3	3	1	1	1	2	1	1								
CBM	4	6	16	22	32	35	42	47	48	50	51	57				37	14
#	1	5	2	4	1	2	1	2	1	8	2	6					
Sulf S1-	7	8	11	14	15	16	17	19	20	22	23	24	25	27	28	71	17
#	4	8	6	2	6	8	8	3	8	1	4	2	3	2	4		
Sulf S1-	29	34															
#	1	1															
Pept.	A2	A8	C40	C45	C56	M1	M3	M4	M12	M14	M15	M16	M19	M20	M22	101	37
#	1	1	4	1	4	8	1	2	1	4	2	2	1	6	2		
Pept.	M23	M24	M28	M29	M42	M48	M50	M61	S1	S8	S9	S12	S13	S14	S16		
#	6	4	5	1	1	3	1	2	1	2	6	9	1	2	1		
Pept.	S26	S41	S49	S54	S66	T3	U48										
#	1	6	1	4	1	1	2										

1 **Table 2: Carbohydrate utilization by *Zobellia galactanivorans*.** Growth was tested with a collection of carbohydrates as sole carbon source (using biological
2 triplicates). The “genes” column indicates the presence (+) or absence (-) of the genes responsible for the utilization of the corresponding substrate based
3 on pathways characterized in other organisms. Detailed information of these genes is reported in Supplementary Table S6. The theoretical pathway is
4 incomplete for D-galactose (4/5 enzymes) and sucrose (3/4 enzymes), although these substrates are assimilated. The substrates highlighted in blue are
5 assimilated, but the corresponding genes in other organisms are not conserved in *Zbl. galactanivorans*. The substrates highlighted in green are not
6 assimilated, despite the presence of conserved genes potentially involved in their utilization pathway

7

Carbon source	Growth	Genes	Carbon source	Growth	Genes	Carbon source	Growth	Genes
D-glucose	+	+	Lactose	+	+	MLG	+	+
D-galactose	+	+(4/5)	Starch	+	+	Fucoidan (<i>P. can</i>)	-	-
L-arabinose	+	+	Glycogen	-	+	Fucoidan (<i>A. nod.</i>)	+	-
D-mannose	+	+	Dextran	-	-	Fucoidan (<i>L. hyp.</i>)	+	-
L-fucose	+	-	Dextran sulfate	-	-	Xanthan	-	-
L-rhamnose	+	-	Cellulose (Avicel)	-	+	Xylan	+	+
D-xylose	+	+	Agar	+	+	Xyloglucan	-	+
D-fructose	+	+	Porphyran	+	+	Mannan	-	+
D-ribose	-	+	κ-carrageenan	+	+	Galactomannan	-	+
N-acetylglucosamine	+	+	ι-Carrageenan	+	+	galactan (arabic gum)	+	-
Sialic acid	n.t.	+	Methylated ι-carrageenan	+	+	Arabinogalactan	-	+
D-Galacturonic acid	-	+	λ-Carrageenan	+	-	Gluconolactone	-	+
D-mannitol	+	+	Alginate	+	+	Chitin	-	+
glycerol	+	+	Ulvan	-	-	Chitosan	-	-
D-Sorbitol	-	+	Pectin	-	+	Chondroitin sulfate A	-	-
Sucrose	+	+(3/4)	Laminarin	+	+	Chondroitin sulfate B	-	-
Maltose	+	+	Pachyman	-	+	Chondroitin sulfate C	-	-
D-Melibiose	+	+	Paramylon	-	+	Hyaluronic acid	-	-
D-Raffinose	+	+	Curdlan	+	+	Heparin	-	-

1

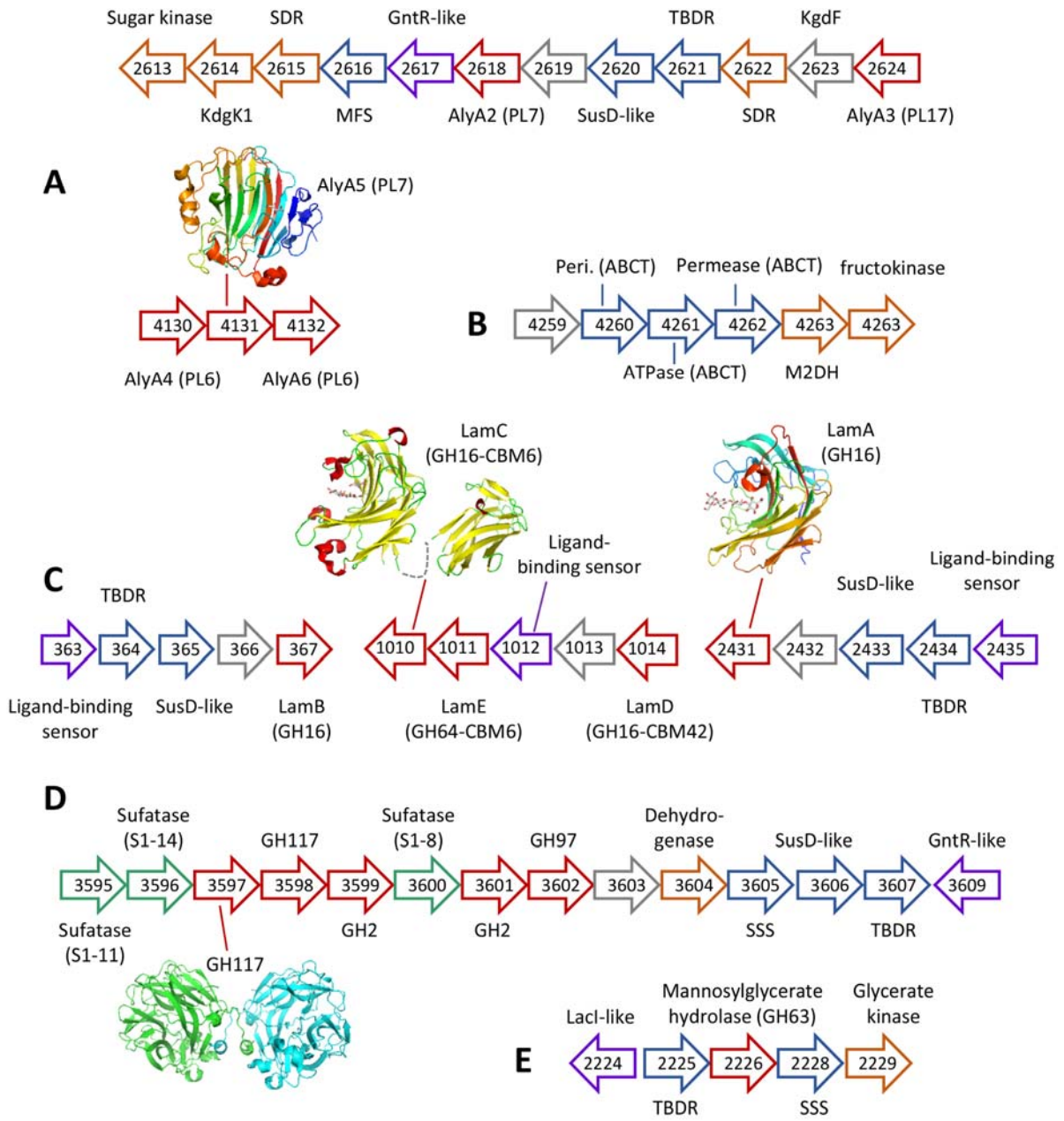
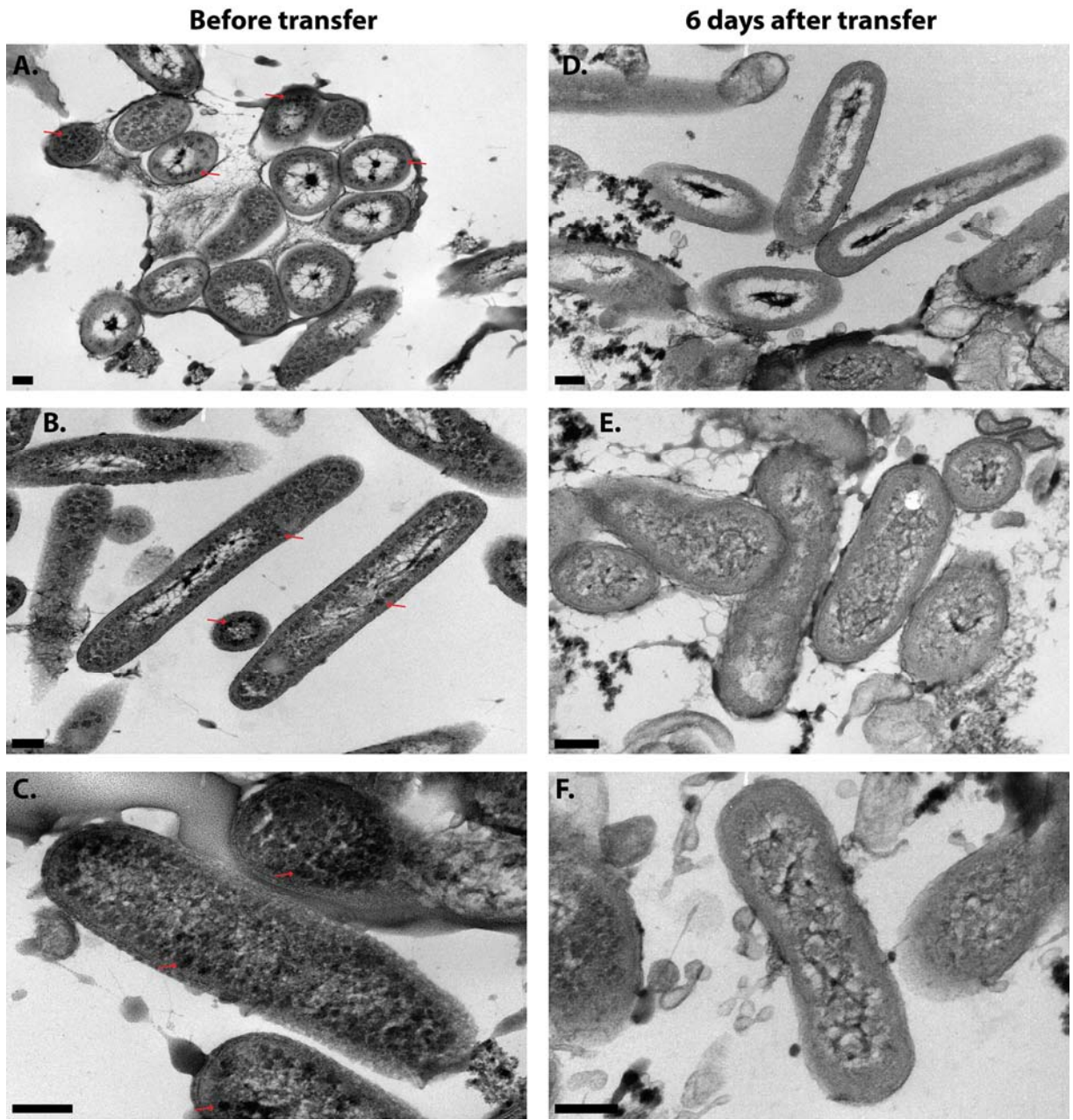


Figure 1

2

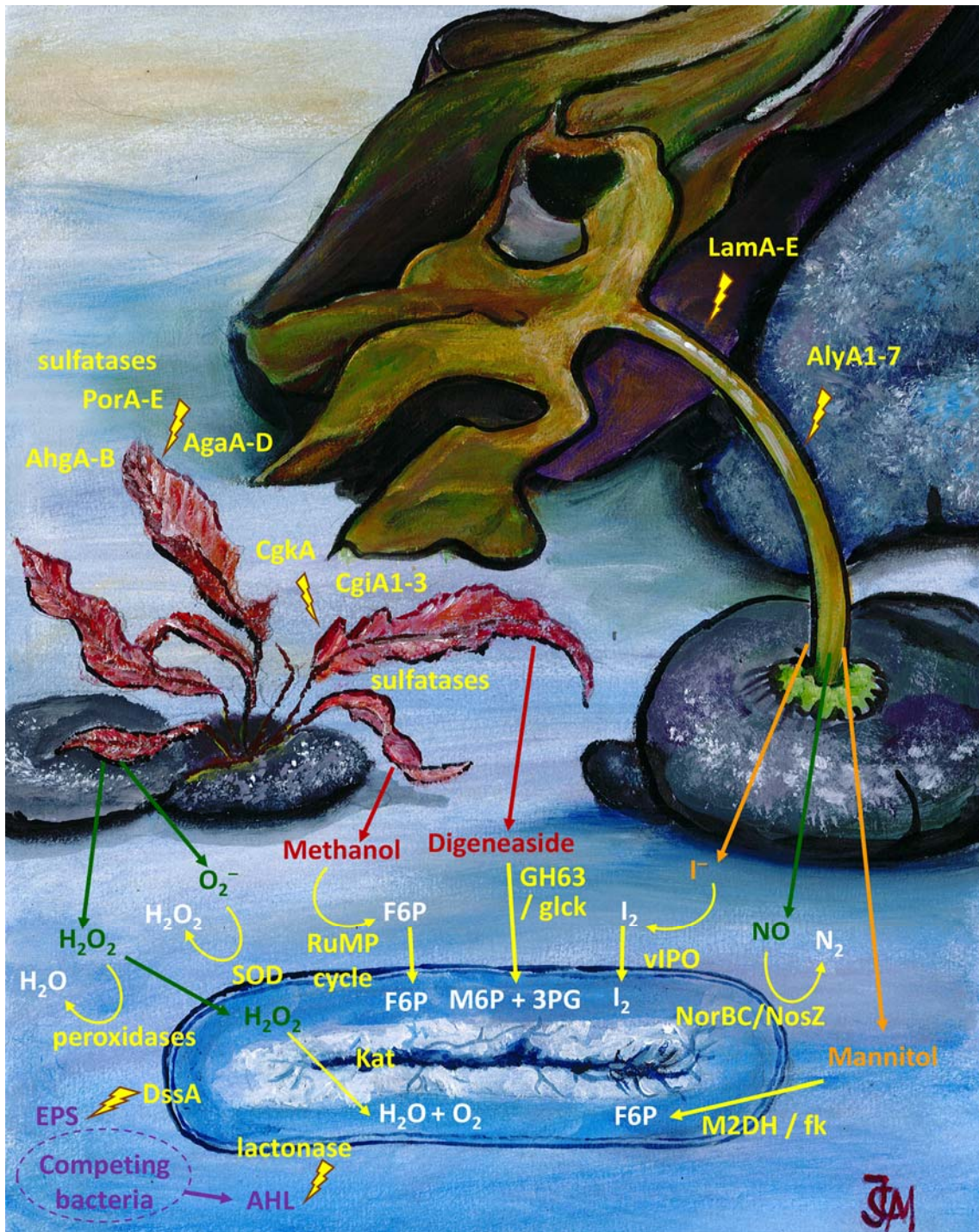
3

4



1
2
3

Figure 2



1
2
3

Figure 3

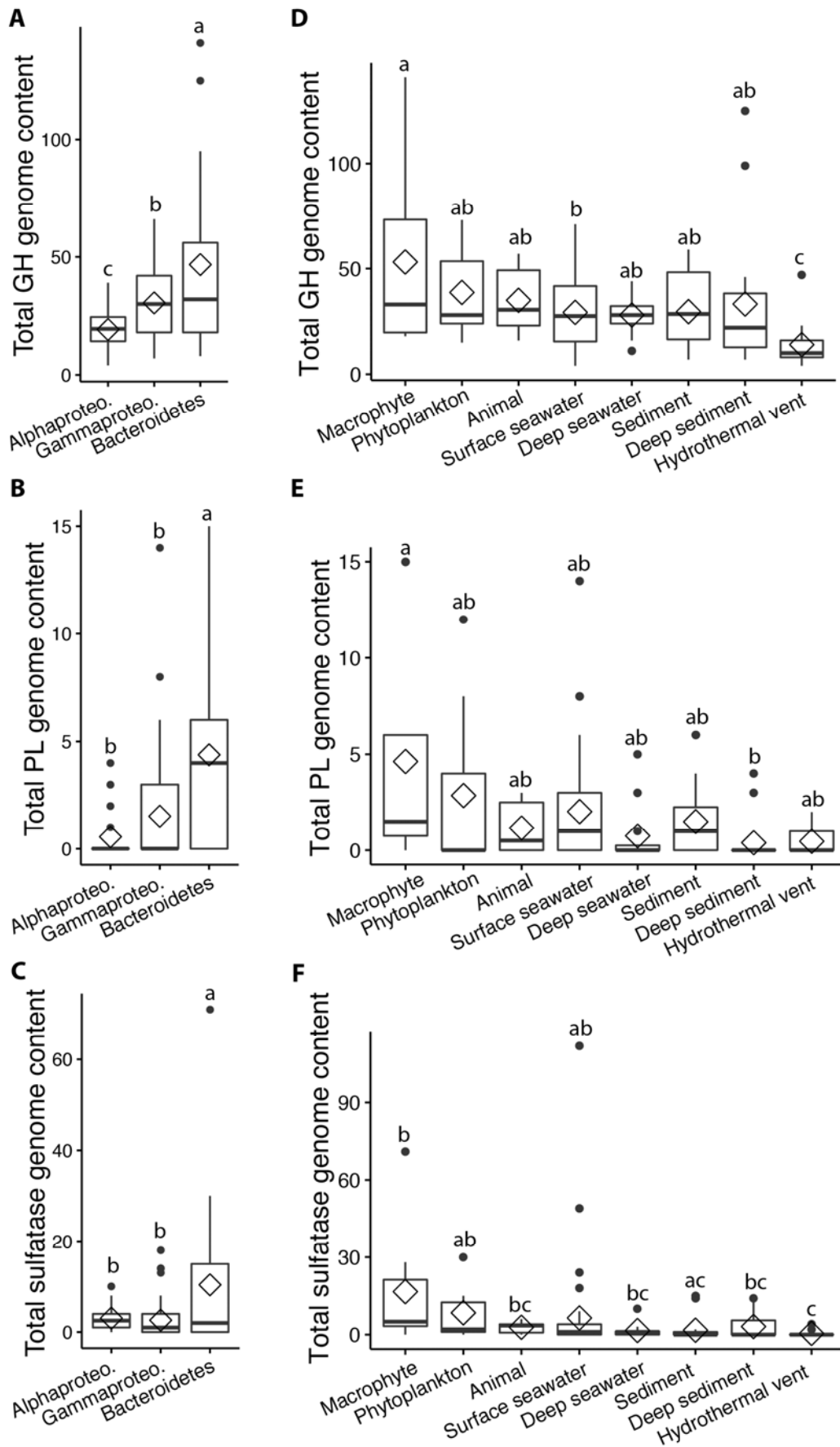


Figure 4

1

2