

1 **Antioxidant capacity is repeatable across years but does not consistently**  
2 **correlate with a marker of peroxidation in a free-living passerine bird.**

3 Running title: Correlation of oxidative state markers

4

5 Charlotte Récapet\*<sup>1,2,3</sup>, Mathilde Arrivé<sup>4</sup>, Blandine Doligez<sup>2,5†</sup> and Pierre Bize<sup>6†</sup>

6 <sup>1</sup> UMR 1224 ECOBIOP; Université de Pau & Pays Adour, INRA; Saint-Pée-sur-Nivelle,

7 France.

8 <sup>2</sup> UMR 5558 LBBE; Université de Lyon, Université Lyon 1, CNRS; Villeurbanne, France.

9 <sup>3</sup> Département d'Ecologie et d'Evolution, Université de Lausanne, Switzerland.

10 <sup>4</sup> UPR 2357 IBMP ; Université de Strasbourg, CNRS ; Strasbourg, France.

11 <sup>5</sup> Animal Ecology, Department of Ecology and Genetics, Evolutionary Biology Centre,

12 Uppsala University, Uppsala, Sweden.

13 <sup>6</sup> School of Biological Sciences, Zoology Building, University of Aberdeen, Aberdeen, United-

14 Kingdom.

15 † These authors contributed equally to the work.

16 \* Corresponding author: [charlotte.recapet@univ-pau.fr](mailto:charlotte.recapet@univ-pau.fr), phone +33 559574266 or +33

17 559515978.

18 ORCID for Charlotte Récapet (0000-0001-5414-8412), Blandine Doligez (0000-0003-3015-5022)

19 and Pierre Bize (0000-0002-6759-4371).

20

21 **Authors' contributions**

22 C.R., B.D. and P.B. designed the study. C.R. carried out the fieldwork. C.R. and M.A.  
23 performed the laboratory analyses and analysed the data. C.R., B.D. and P.B. drafted the  
24 manuscript and M.A. reviewed it for substantial content. All authors gave final approval for  
25 publication.

26 **Acknowledgments**

27 Many thanks to the landowners of Gotland for access to the study sites; to Lars Gustafsson for  
28 logistics on the field; to fifteen students and field assistants for their contribution to fieldwork;  
29 to François Criscuolo for his help designing the study and his comments on this manuscript;  
30 to Holger Schielzeth and Pierre de Villemereuil for their advice on adjusting repeatability and  
31 correlation estimates for measurement error and to Alan A. Cohen, David Costantini and  
32 anonymous reviewers for their comments on previous versions of this manuscript.

33 This work was supported by the French National Center for Scientific Research (PICS France-  
34 Switzerland to B.D.); the French Ministry of Research (PhD fellowship to C.R.); the University  
35 of Aberdeen (stipend to C.R.); the L'Oréal Foundation-UNESCO "For Women in Science"  
36 program (fellowship to C.R.); the Région Rhône-Alpes (Explora'doc mobility grant to C.R.);  
37 the Fédération de Recherche 41 BioEnvironnement et Santé (training grant to CR); the Rectors'  
38 Conference of the Swiss Universities (joint doctoral program grant to C.R.) and the Fondation  
39 pour l'Université de Lausanne (exchange grant to C.R.); and the Journal of Experimental  
40 Biology (travel grant to CR).

41

## 42 **Abstract**

43 Oxidative stress occurs when reactive oxygen species (ROS) exceed antioxidant defences,  
44 which can have deleterious effects on cell function, health and survival. Therefore, organisms  
45 are expected to finely regulate pro-oxidant and antioxidant processes. ROS are mainly  
46 produced through aerobic metabolism and vary in response to changes in energetic  
47 requirements, whereas antioxidants may be enhanced, depleted or show no changes in  
48 response to changes in ROS levels. We investigated the repeatability, within-individual  
49 variation and correlation across different conditions of two plasmatic markers of the oxidative  
50 balance in 1108 samples from 635 free-living adult collared flycatchers (*Ficedula albicollis*). We  
51 sought to manipulate energy constraints by increasing wing load in 2012 and 2013 and by  
52 providing additional food in 2014. We then tested the relative importance of within- and  
53 between-individual variation on reactive oxygen metabolites (ROMs), a marker of lipid and  
54 protein peroxidation, and on non-enzymatic antioxidant defences (OXY test). We also  
55 investigated whether the experimental treatments modified the correlation between markers.  
56 Antioxidant defences were repeatable (range of repeatability estimates = 0.128 - 0.581),  
57 whereas ROMs were not (0 - 0.061). Antioxidants varied neither between incubation and  
58 nestling feeding nor between sexes. ROMs increased from incubation to nestling feeding in  
59 females and were higher in females than males. Antioxidant defences and ROM concentration  
60 were globally positively correlated, but the correlation varied between experimental  
61 conditions and between years. Hence, the management of oxidative balance in wild animals  
62 appears flexible under variable environmental conditions, an observation which should be  
63 confirmed over a wider range of markers.

64 Keywords: energetic constraints, food supplementation, reactive oxygen metabolites,  
65 antioxidant defences, oxidative stress, *Ficedula albicollis*

66

## 67 **Introduction**

68 Reactive oxygen species (ROS) produced during aerobic respiration are important actors of  
69 cell signalling pathways and immune responses (Valko et al. 2007; Finkel 2011; Sena and  
70 Chandel 2012; Schieber and Chandel 2014), but can have deleterious effects by oxidising  
71 macromolecules and thereby disrupting cell function (Avery 2014). Oxidative stress, resulting  
72 from an excess of ROS relative to antioxidant defences, is thus proposed as a credible  
73 mechanism underlying life-history trade-offs (Costantini 2008; Monaghan et al. 2009; Metcalfe  
74 and Alonso-Alvarez 2010). To understand the potential role of oxidative stress as a constraint  
75 on life-history traits, it is crucial to understand how organisms co-regulate pro- and anti-  
76 oxidant molecules. There is no *a priori* expectation on how measures of antioxidant defences  
77 should relate to measures of ROS levels and oxidative damages (Costantini and Verhulst 2009).  
78 The antioxidant capacity could be modulated to counteract the deleterious effects of ROS, thus  
79 resulting in a redox balance. Such compensation by an increase in antioxidant in response to  
80 ROS production would lead to a positive, or an absence of, correlation. Conversely, a deficit  
81 of energetic resources or dietary antioxidants might constrain antioxidant defences and thus  
82 decrease their ability to counteract ROS effects. If circulating antioxidants are then used up to  
83 protect the organism against increased reactive oxygen species, they should covary negatively  
84 with ROS production or oxidative damages. However, it is not clear whether antioxidant  
85 protection, especially through antioxidant enzymes, is energetically costly (Speakman and  
86 Krol 2010; Isaksson et al. 2011; Gems and Partridge 2013). Even direct experimental  
87 manipulations of dietary antioxidants rarely impacted antioxidant defences in the expected  
88 direction (Costantini and Møller 2008; Cohen et al. 2009; Archer et al. 2015; Cecere et al. 2016;  
89 Vaanholt et al. 2016; Costantini et al. 2018), despite some links in correlative studies  
90 (Talegawkar et al. 2009; Wang et al. 2012; Yang et al. 2013b) and some experimental studies  
91 (Beaulieu et al. 2016). Overall, results are often conflicting when different dietary antioxidants

92 are considered simultaneously (Cohen et al. 2009; Talegawkar et al. 2009), suggesting  
93 compensation mechanisms between different types of antioxidant defences.

94 Variation in ROS production is also insufficiently understood. ROS are often expected to  
95 increase in response to increased metabolism, but the generality of this relationship is far from  
96 clear (Speakman and Selman 2011). A higher metabolic and respiratory rate might not be  
97 associated with a higher ROS production (Barja 2007; Glazier 2015; Salin et al. 2015b). First, the  
98 natural or experimental inhibition of mitochondrial respiration simultaneously slows down  
99 the electron flow through the electron transport chain, which is then in a reduced state, and  
100 increases the intra-mitochondrial concentration of oxygen, two mechanisms which promote  
101 ROS production (Bonawitz et al. 2007; Salin et al. 2015a). Second, uncoupling proteins (UCPs)  
102 and changes in the mitochondrial inner membrane structure modulate the inner membrane  
103 conductance to protons and in turn the relationship between energy consumption and ROS  
104 production (Brand 2000; Criscuolo et al. 2005; Stier et al. 2014a).

105 The interpretation of oxidative stress measures in ecological studies requires a better  
106 understanding of their variability in the wild and the actual co-variation between markers, as  
107 well as the link between these markers and fitness. In particular, relationships between traits  
108 can differ greatly when measured at the within-individual level, where life-history trade-offs  
109 can be expressed, or at the between-individual level, where differences in individual quality  
110 or permanent environment are expected to play a large role (Stearns 1989; Wilson and Nussey  
111 2009). To explore these questions, we measured two plasmatic markers of oxidative state,  
112 namely (i) reactive oxygen metabolites, mainly driven by organic hydroperoxides acting as  
113 precursors of long-term oxidative damage, through the d-ROM test and (ii) non-enzymatic  
114 antioxidant capacity through the OXY test, in adults of a small passerine bird, the collared  
115 flycatcher *Ficedula albicollis* (Temminck, 1815), during three consecutive breeding seasons.  
116 These two markers, frequently used in wild bird populations, are sensitive to manipulations  
117 of energy expenditure or mitochondrial ROS production (Stier et al. 2014b; Vaugoyeau et al.

118 2015; Récapet et al. 2016c, 2017). They have been linked to dietary antioxidant intake in some  
119 studies (Beaulieu and Schaefer 2014), although the relationship was often absent (Marri and  
120 Richner 2015; Leclaire et al. 2015; Cecere et al. 2016) or counter-intuitive (Costantini et al. 2007;  
121 Vaugoyeau et al. 2015). These markers also depend on food and habitat quality (van de  
122 Crommenacker et al. 2011; Isaksson 2013; Lendvai et al. 2014; Beaulieu et al. 2015b; Giordano  
123 et al. 2015; but see Costantini 2010), as well as reproductive effort (Beaulieu et al. 2011; Markó  
124 et al. 2011; Stier et al. 2012; Reichert et al. 2014; Wegmann et al. 2015b). Links to fitness  
125 outcomes were found in some studies (Geiger et al. 2012; Herborn et al. 2016), but overall  
126 results remain mixed (see Stier et al. 2012 for a review of the links with reproductive success;  
127 Boonekamp et al. 2018). Whether variation of these markers in natural populations is driven  
128 by environmental variation or permanent individual differences, in particular related to  
129 differences in overall fitness or life-history strategies, thus remains unclear. Although markers  
130 of oxidative state are often variable across tissues (Veskoukis et al. 2009), we focused on  
131 plasma here because (i) it can be repeatedly sampled within and between years and (ii) we can  
132 expect quick variation of oxidative balance in the blood in response to energetic constraints  
133 (Nikolaidis et al. 2008). We first estimated the repeatability of oxidative state markers within  
134 the same season, as well as between seasons. Then we assessed the correlation between these  
135 markers while controlling for differences between years or between sexes that can spuriously  
136 generate strong correlations between markers (Christensen et al. 2015). If non-enzymatic  
137 antioxidants are constrained by availability in the diet, we expect a negative correlation  
138 between antioxidant capacity and reactive oxygen metabolites and this negative correlation  
139 should be stronger when feeding conditions are poorer. Conversely, if non-enzymatic  
140 antioxidants are up regulated at low costs in response to increased ROS production, we expect  
141 a positive correlation between these two markers, independently of the feeding conditions.

142 To experimentally test the effect of energetic and nutritional constraints on oxidative state,  
143 we manipulated wing load in breeding females (i.e. handicapped females) to increase their

144 energy expenditure in 2012 and 2013. Measures of field metabolic rate on a subset of females  
145 showed that this manipulation was effective at increasing energy expenditure, although we  
146 cannot determine the exact contribution of behavioural and metabolic changes (Récapet et al.  
147 2016c). In another year (2014), we food supplemented breeding pairs during the nestling  
148 feeding stage to alleviate nutritional constraints and foraging energy expenditure. Less than  
149 40% of the data analysed in this study (264 observations out of 663 for ROMs and 316 out of  
150 828 for antioxidant capacity) have already been used as separate variables to investigate  
151 differences in the management of reproductive trade-offs between dispersing and philopatric  
152 individuals (Récapet et al. 2016c, 2017). Here, we are focusing on the impact of energetic  
153 constraints on the correlation between the two markers and to this end we pooled together  
154 measures on birds of known and unknown dispersal status.

155

## 156 **Material and methods**

### 157 *Study population*

158 The study was conducted during spring 2012 to 2014 in a natural population of collared  
159 flycatchers breeding on the island of Gotland, Sweden (57°07'N, 18°20'E). This hole-nesting  
160 bird readily breeds in the artificial nest boxes erected in the nine forest plots used for the study  
161 (between 13 and 78 nest boxes per plot distributed homogeneously in space). Nests were  
162 visited regularly to estimate laying date, clutch size and hatching date. Females were first  
163 caught during incubation (on average  $\pm$  S.D.  $7.2 \pm 1.2$  days after the start of incubation), before  
164 the start of any experimental treatment, then males and females were both caught when  
165 feeding nestlings (on average when nestlings were  $9.0 \pm 2.1$  days old). For females, the interval  
166 between both captures was thus  $13.6 \pm 2.5$  days on average ( $\pm$  S.D.). Despite the potential  
167 interest of measuring short-term repeatability in blood parameters, blood samples for this  
168 study were only taken once at each stage to avoid the risk of taking a larger amount of blood

169 than advised by ethical guidelines and to reduce the negative impact of such disturbance on  
170 reproductive success. Upon capture, birds were ringed if previously unringed and blood  
171 sampled (see below).

172

### 173 *Experimental manipulations of energetic constraints*

174 In 2012 and 2013, we increased energetic constraints on females from the second half of the  
175 incubation period by cutting the two innermost primaries of each wing at their base, to mimic  
176 feather loss at the onset of moult (Moreno et al. 1999; Sanz et al. 2000; Ardia and Clotfelter  
177 2007; Récapet et al. 2016c). Upon capture during incubation, females were assigned to the  
178 manipulated (handicapped) or the control group (same handling conditions but no feathers  
179 cut) alternatively by blocks of two females to avoid the two experimental groups to differ in  
180 treatment date. The manipulation was successful at increasing female energy expenditure,  
181 measured through the doubly-labelled water method (Récapet et al. 2016c). We did not  
182 manipulate the wing load of males in this experiment and found no effect of our manipulation  
183 on males, for example through compensatory behaviour (Récapet et al. 2016c).

184         Conversely, in 2014, we relieved energetic constraints on both parents during the  
185 nestling feeding period by providing additional food (Récapet et al. 2016a, 2017). When  
186 nestlings were two days old, transparent plastic containers were attached to the front side of  
187 the nest box. For supplemented pairs, 30g live maggots (larvae of *Calliphora erythrocephala*, Fibe  
188 AB, Kungsängen, Sweden) were placed in the containers once a day until nestlings were 12  
189 days old (i.e. over a total of 11 days). This corresponded to approx. 150 individual larvae of  
190 200mg per day, i.e. 25 larvae per nestling for a brood of 6 nestlings. Thus, the food  
191 supplementation spared about half of the approx. 360 daily parental visits estimated in control  
192 nests in the same year (Récapet et al. 2017). Control pairs received no food, but were visited  
193 daily to control for human disturbance. Pairs were assigned either to the control or



194 supplemented group alternatively in space for a given hatching date, so as to distribute  
195 treatments homogenously in space both within and between study plots and in time within  
196 the breeding season.

197

#### 198 *Measures of markers of the oxidative balance*

199 To measure blood markers of oxidative state, a 40 $\mu$ L blood sample was taken from the brachial  
200 vein into heparin-coated Microvettes (Sarstedt, Nümbrecht, Germany). Blood samples were  
201 maintained at 5°C in the field before being centrifuged in the evening to separate plasma from  
202 red blood cells. Plasma and red blood cells were then stored at -80°C until being analysed in  
203 the laboratory. A total of 860 blood samples was collected on nestling feeding males and  
204 females, and 256 on incubating females. Because of the low amount of plasma available for  
205 each sample, we restricted our laboratory analyses to two oxidative state markers: reactive  
206 oxygen metabolites (ROMs) concentration and plasma antioxidant capacity, following  
207 protocols adapted to small samples (Récapet et al. 2016c, 2017). Each sample was analysed on  
208 the same day in the laboratory for both ROM concentration and antioxidant capacity to avoid  
209 freeze-thaw cycles. Samples were distributed randomly on 96-well plates relative to breeding  
210 pair, breeding area or laying date. The samples collected in different years were analysed in  
211 different years, so potential differences between years in ROM and OXY levels might partly  
212 reflect experimental variation and are thus not interpreted as possible biological effects later  
213 on. When studying correlations, these variables were however standardized within years, so  
214 that differences in their correlation coefficient could not stem from between-year differences.

215 Plasma concentration of ROMs was measured using the d-ROMs test (MC0001 kit,  
216 Diacron International, Grosseto, Italy). Haemolysed samples with a light orange or pink to  
217 bright red colouration were excluded visually, as well as opaque hyperlipemic samples with  
218  $OD_{800nm} > 0.100$  (N = 229, out of a total of 1116 samples). ROMs were measured on 5 to 7  
219 different 96-well plates each year. The intra-plate repeatability [95% CI] was 0.797 [0.67; 0.897]

220 on 24 duplicates and the inter-plate repeatability was 0.694 [0.579; 0.787] on 28 duplicates  
221 (calculated using the rptR package version 0.9.2; Nakagawa and Schielzeth 2010). Dietary  
222 hydroperoxides are degraded in the stomach (Kanazawa and Ashida 1998) and have a low  
223 uptake by intestinal cells (Maestre et al. 2013). Their contribution to plasma ROM  
224 concentration is most likely low. Plasmatic ROM concentration might however be influenced  
225 by the concentration of triglycerides in the plasma (Pérez-Rodríguez et al. 2015). Preliminary  
226 analyses on a subset of our samples provide no support for such association in our study  
227 species, and thus we did not control for the concentration of triglycerides in our statistical  
228 analyses (Appendix 1).

229 Plasma antioxidant capacity was measured by the capacity of plasma to oppose the  
230 oxidative action of the hypochlorous acid HClO (OXY adsorbent test, MC434 kit, Diacron  
231 International, Grosseto, Italy). This measure reflects the concentrations of ascorbate (vitamin  
232 C), flavonoids, carotenoids, glutathione and albumin, which are efficient scavengers of HClO  
233 (Folkes et al. 1995; de Groot and Rauen 1998; Pennathur et al. 2010), and to a lesser extent  
234 tocopherols (vitamin E) and ubiquinol which are less reactive toward hypochlorous acid (Carr  
235 et al. 2001; Pattison et al. 2003; Nguyen and Southwell-Keely 2007; Niki 2014; Chen et al. 2016).  
236 We chose this assay because it is less sensitive to variations in uric acid concentration in the  
237 plasma than other methods (Costantini 2011). Antioxidant capacity was measured on 5  
238 different 96-well plates each year. The intra-plate repeatability [bootstrap 95% CI] was 0.914  
239 [0.876, 0.946] on 30 duplicates and the inter-plate repeatability was 0.858 [0.802, 0.901] on 24  
240 duplicates.

241 Due to various technical problems during sample preparation, conservation and  
242 during laboratory assays, ROM concentration could not be measured for 11 out of 887 samples  
243 of adequate quality and plasma antioxidant capacity could not be measured for 27 out of 1116  
244 samples. The total sample size was thus  $N = 876$  for ROM concentration and  $N = 1089$  for  
245 plasma antioxidant capacity. For correlation analyses, the sample size with data for both

246 markers was  $N = 857$ . More detailed sample sizes by years, breeding stages, sexes and  
247 experimental treatments can be found in tables 1 to 4.

248

#### 249 *Statistical analyses*

250 First, to assess the inter-annual repeatability of ROM and antioxidant capacity markers,  
251 we used samples collected on different years but at the same breeding stage (incubation or  
252 nestling feeding) for a given individual. We ran a linear mixed-effect model for each breeding  
253 stage because only females were sampled at the incubation stage whereas both males and  
254 females were sampled at the nestling feeding stage. We included individual identity (nested  
255 within sex) and plate (nested within year) as random factors, and year as a fixed factor.  
256 Individuals for which only one measure was available were included in the models to improve  
257 the estimates for residual variance (Martin et al. 2011). Previous studies have not shown any  
258 strong effect of wing load manipulation on antioxidant capacity or reactive oxygen metabolites  
259 (Wegmann et al. 2015a; Récapet et al. 2016c, 2017), so data from manipulated individuals were  
260 included in the repeatability analyses while still including an effect of the experimental  
261 manipulation to account for the fact that previous analyses were based on smaller samples.  
262 The effects of sex (two-level factor) and experimental manipulations (three-level factor:  
263 “control”, “wing load manipulation”, “food supplementation”), as well as their interaction,  
264 were included in the models describing the markers during nestling feeding. Second, to assess  
265 the repeatability of the oxidative state markers (ROM concentration and antioxidant capacity)  
266 measured at different breeding stages (incubation and nestling feeding) within the same year  
267 in a given female, we used linear mixed-effect models with individual identity within a year,  
268 individual identity within a breeding stage across years (to account for the potential  
269 correlation between measures of an individual at a given breeding stage between years), and  
270 plate (nested within year) as random factors, and year, breeding stage, manipulation and the  
271 interaction of breeding stage and manipulation as fixed factors, on females sampled during

272 incubation and/or nestling feeding. Repeatability was calculated as the ratio of individual  
273 (resp. individual within year) random variance on the sum of individual (resp. individual  
274 within year), between-plate and residual variances. This allowed us to calculate repeatability  
275 estimates adjusted for measurement errors, by multiplying the between-plates and residual  
276 variances by the technical repeatability, to better reflect the actual biological variance.  
277 Confidence interval for these estimates were calculated through 1000 parametric bootstraps  
278 and we tested whether the repeatability differed from zero through a likelihood-ratio test with  
279 a mixture distribution of Chi-square distributions with zero and one degree of freedom as  
280 reference, using the *rptR* package version 0.9.2 (Nakagawa and Schielzeth 2010).

281 Including body mass as a covariate in any of the models above did not change the  
282 variance estimates, and there was no significant effect of body mass, thus the models reported  
283 here do not include body mass. The parameters of the univariate models for the repeatability  
284 analyses were estimated by restricted maximum likelihood (REML) using the *lmer* function in  
285 R (Bates et al. 2014). The significance of the fixed effects was tested using F-tests with  
286 Satterthwaite estimation for the denominator degree of freedom, using the function *anova* from  
287 the *lmerTest* library (Kuznetsova et al. 2016).

288 To investigate the correlation between ROM concentration and antioxidant capacity,  
289 the two variables were modelled as response variables in bivariate mixed-effect models with  
290 plate as distinct random factors for antioxidant capacity and ROM concentration, as well  
291 individual identity as a common random factor when pooling multiple years. This allowed us  
292 to estimate the covariance, and thus correlation coefficients, at the between-individual and  
293 within-individual (residual) levels, while correcting for the random structure of both  
294 variables. The response variables were standardized to mean zero and variance one within  
295 each year, treatment and sex to account for potential differences in mean and variance between  
296 these groups. The covariance was estimated at the between- and within-individual levels  
297 when studying multiple years together. The total phenotypic variance-covariance matrix was

298 computed as the sum of the between- and within-individual variance-covariance matrices.  
299 Only the phenotypic covariance is reported when there were less than 10 individuals with  
300 multiple measures.

301 The parameters of the bivariate models were estimated in a Bayesian framework that  
302 allowed us to fit different random effects for each response variable and to estimate their  
303 covariance at the between- and within-individual levels. The priors for the fixed effects  
304 estimates were set to a multinomial distribution with expected values of 0 and a diagonal  
305 variance-covariance matrix with a low strength of belief ( $10^{10}$ ). The priors were set to inverse-  
306 Wishart distributions with the variances set to  $1/n_i$  where  $n_i$  was the number of variance  
307 components estimated for the parameter  $i$ , null covariances, and a degree of belief equal to the  
308 dimension of the variance-covariance matrix for the parameter. Preliminary analyses showed  
309 that the priors used for the covariances were quite informative on the posterior distribution of  
310 the between- and within-individual correlations, but not on the total phenotypic correlation.  
311 The analyses were performed with Markov chain Monte Carlo sampling using the  
312 *MCMCglmm* function in R (Hadfield 2010), with 1020000 iterations, a burn-in period of 20000,  
313 and a thinning interval of 500, to obtain autocorrelation values lower than 0.06 and an effective  
314 sample size higher than 2000 for all correlation estimates. We reported the mode of the  
315 posterior distribution as point estimate for the correlations and the Highest Posterior Density  
316 as 95% credibility interval. All estimates passed convergence diagnostic tests using the  
317 Cramer-von-Mises statistic with  $P > 0.05$  (package CODA version 0.18-1; Plummer et al. 2006).

318 To test the effect of the wing load manipulation on the correlation between the two  
319 markers, we compared two bivariate models describing the standardized markers in 2012 and  
320 2013, one with homogeneous within-individual (residual) covariances according to the  
321 experimental treatment and a second allowing for heterogeneous within-individual  
322 covariances according to the experimental treatment. Similarly, we tested the effect of the food  
323 supplementation on the correlation by comparing bivariate models for the standardized

324 markers in 2014 with or without heterogeneous covariances according to the experimental  
325 treatment. Finally, the effect of temporal variation in the environment was tested by  
326 comparing two models for the control groups in all years, with or without heterogeneous  
327 covariances according to year. The Deviance Information Criterion was used as an indication  
328 to compare models with different random variance structures, with a DIC difference larger  
329 than five interpreted as a significantly better model (DIC; Spiegelhalter et al. 2002).

330

## 331 **Results**

### 332 *Inter-annual repeatability of OXY and ROM*

333 In females sampled during incubation in different years, the repeatability of antioxidant  
334 capacity was significant ( $r$  [95% confidence interval] = 0.581 [0.327; 0.825]; Table 1, Fig. 1).  
335 Considering that approximately 14.2% of the within-individual variance could be considered  
336 measurement error in the context of this study, the biological repeatability was approximately  
337 0.617. In contrast, the repeatability of ROM concentration was very low and did not  
338 significantly differ from zero (0.032 [0; 0.660]; Table 1, Fig. 1). As measurement error accounted  
339 for 30.6% of the within-individual variance, the biological repeatability corrected for  
340 measurement error was approximately 0.046.

341 In males and females sampled during feeding in different years, the repeatability of  
342 antioxidant capacity was low but significant (0.124 [0.018; 0.254], adjusted for measurement  
343 error: 0.142; Table 1, Fig. 1), whereas the repeatability of ROM concentration did not  
344 significantly differ from zero (0.061 [0; 0.257], adjusted for measurement error: 0.085; Table 1,  
345 Fig. 1). There was no effect of the manipulations, even in interaction with sex, on antioxidant  
346 capacity (manipulations x sex =  $F_{2,796} = 0.08$ ,  $P = 0.92$ ; manipulations:  $F_{2,812} = 1.55$ ,  $P = 0.21$ ;

347 Fig. 2) or ROM concentration (manipulations  $\times$  sex =  $F_{2,640} = 0.17$ ,  $P = 0.84$ ;  
348 manipulations:  $F_{2,650} = 0.41$ ,  $P = 0.67$ ;

349 Fig. 3). During feeding, antioxidant capacity was independent of sex ( $F_{1,646} = 0.39$ ,  $P =$   
350 0.54;



351 Fig. 2) but ROM concentration was lower in males than females ( $-0.095 \pm 0.045$ ,  $F_{1,512} =$   
352 12.34,  $P = 0.0005$ ;

353 Fig. 3).

354

355 *Intra-annual repeatability of OXY and ROM*

356 In females sampled at different breeding stages within the same year, the repeatability of  
357 antioxidant capacity was low but significant (0.131 [0.030; 0.253], adjusted for measurement  
358 error: 0.149; Table 1, Fig. 1), whereas the repeatability of ROM concentration between stages  
359 was null and non-significant (<0.001 [0; 0.174], adjusted for measurement error: <0.001; Table  
360 1, Fig. 1). Food supplementation had a positive effect on the increase in antioxidant capacity  
361 between the incubation and breeding stage, although this effect was not very strong relative  
362 to the overall variation in antioxidant capacity (interaction breeding stage x manipulations:  
363  $F_{2,293} = 3.63, P = 0.028$ ;

364 Fig. 2). There was no effect on ROM concentration of the manipulations (

365 Fig. 3), either alone ( $F_{2,519} = 1.08$ ,  $P = 0.34$ ) or in interaction with the breeding stage ( $F_{2,429} = 0.14$ ,  
366  $P = 0.87$ ). ROM concentration was higher during the nestling feeding stage compared to the  
367 incubation stage ( $+0.165 \pm 0.058$ ,  $F_{1,100} = 13.14$ ,  $P = 0.0005$ ;

368 Fig. 3).

369

370 *Correlations between physiological markers*

371 Overall, there was a positive correlation at the phenotypic level between ROM concentration  
372 and antioxidant capacity during nestling feeding (N = 527 individuals; n = 646 observations;  
373 posterior mode [95% credibility interval]:  $V_{\text{phenotypic}} = 0.102$  [0.028; 0.181]). Considering that  
374 measurement error accounted for 14.2% (resp. 30.6%) of the within-individual variance in  
375 antioxidant capacity (resp. ROM concentration) and that measurement errors were  
376 uncorrelated between the two markers, the adjusted correlation would be approximately  
377 0.125. The between-individual and within-individual correlations, when estimated separately,  
378 were however not significantly different from zero ( $V_{\text{between-individual}} = 0.242$  [-0.271; 0.618],  
379  $V_{\text{within-individual}} = 0.099$  [-0.043; 0.193]). The strength of this phenotypic correlation differed  
380 according to the experimental group: the correlation was stronger in wing load manipulated  
381 (handicapped) females compared to control ones (model with heterogeneous covariances  
382 according to manipulation compared to homogeneous covariances:  $\Delta\text{DIC} = -12.6$ ; Table 2).  
383 This effect seemed to be driven by a difference between experimental groups in 2013 ( $V_{\text{phenotypic}}$   
384 = 0.417 [0.126; 0.590] in handicapped females vs. -0.038 [-0.325; 0.208] in control females),  
385 whereas there was no difference in 2012 ( $V_{\text{phenotypic}} = -0.110$  [-0.421; 0.200] in handicapped  
386 females vs. 0.081 [-0.291; 0.341] in control females), although measuring differences in within-  
387 individual correlation due to the experimental treatment was impossible within a single year.  
388 There was no difference in correlation between males whose females were handicapped and  
389 controls ( $\Delta\text{DIC} = -4.0$ ; Table 2). Conversely, there was no effect of the food supplementation in  
390 2014 on the correlation between antioxidant capacity and ROM concentration, since the  
391 positive correlation found in supplemented pairs was similar to that in control ones (model  
392 with heterogeneous covariances according to food supplementation compared to  
393 homogeneous covariances:  $\Delta\text{DIC} = +4.6$ ; Table 3). Finally, in control pairs, the strength of the

394 correlation was also higher in 2014 compared to 2012 and 2013 (model with heterogeneous  
395 covariances according to year compared to homogeneous covariances:  $\Delta\text{DIC} = -26.3$ ; Table 4).  
396 Evidence for a positive correlation between markers was weaker in incubating females  
397 compared to nestling-feeding adults (Table 4).

398

## 399 **Discussion**

400 In this study, we aimed at describing the correlation structure between two plasmatic markers  
401 of the oxidative balance and its variation in different natural and experimental conditions.  
402 Individual identity and food availability were important determinants of antioxidant capacity  
403 but did not influence ROM concentration. These two physiological markers covaried  
404 positively. Importantly, the correlation between markers was stronger in experimentally  
405 handicapped (wing-load manipulated) females and varied between years, while relieving  
406 energetic constraints through food supplementation did not change the correlation. Overall,  
407 our findings refute the existence of a stable correlation structure between these two widely  
408 used markers. Context dependence should thus be better taken into account when interpreting  
409 correlations between markers of oxidative stress.

410

### 411 *Stability and variation of individual markers*

412 Antioxidant capacity was repeatable between years at a given breeding stage, as well as within  
413 year between incubation and nestling feeding stages (for females). The repeatability was  
414 higher during incubation compared to nestling feeding (between years) or between stages  
415 (within the same year), suggesting that uncontrolled environmental factors had a stronger  
416 effect during nestling feeding. It thus seems that the between-year variation in antioxidant  
417 capacity is partly determined by individual characteristics, perhaps including the ability to  
418 find higher quality food rich in antioxidants, to acquire a better territory, or to produce more

419 enzymatic antioxidants and spare the dietary antioxidant pools. This could be due to genetic  
420 differences or to permanent individual differences due to early-life effects. Similarly,  
421 significant within-individual repeatability in antioxidant capacity among breeding seasons  
422 was found in barn swallows *Hirundo rustica* ( $r = 0.49$ ,  $P < 0.001$ , Saino *et al.* 2011), Seychelles  
423 warblers *Acrocephalus sechellensis* ( $r = 0.122$ ,  $P = 0.043$ , van de Crommenacker *et al.* 2011),  
424 laboratory mice *Mus musculus* ( $r = 0.65$ , Stier *et al.* 2012) and European shags *Phalacrocorax*  
425 *aristotelis*, although repeatability varied with age (2-9 years old:  $r = 0.20$ ,  $P = 0.36$ ; 10 to 22 years  
426 old:  $r = 0.33$ ,  $P = 0.020$ ; Herborn *et al.* 2015). The lower repeatability at the nestling feeding  
427 stage, or between breeding stages within the same year, might be partly explained by  
428 individual variation in the response to environmental conditions, such as the increase in  
429 antioxidant capacity in food-supplemented females between incubation and nestling feeding.  
430 Previous experimental studies that manipulated energy expenditure or oxidative balance in  
431 birds showed that measures of antioxidant capacity were only repeatable in control birds  
432 (Meitern *et al.* 2013) or were not correlated across different treatments (Beamonte-Barrientos  
433 and Verhulst 2013).

434 ROM concentration was not repeatable either between- or within-year; variations in ROM  
435 concentration were thus mainly determined by external factors or physiological changes, apart  
436 from a difference between males and females. The lower methodological reliability of ROM  
437 measurements compared to antioxidant capacity, mainly due to low values of ROMs levels,  
438 could also have reduced our ability to detect weak but biologically significant repeatability.  
439 This result here contrasts with studies of ROMs that found individual consistency even under  
440 different experimental treatments ( $r = 0.38$  in laboratory mice, Stier *et al.* 2012;  $r = 0.42$  in zebra  
441 finches *Taeniopygia guttata*, Beamonte-Barrientos and Verhulst 2013;  $r = 0.35$  for individuals  
442 younger than 10 years but 0.13 for older ones in European shags, Herborn *et al.* 2016) although  
443 some studies found similarly low repeatabilities ( $r = 0.00$  in Seychelles warblers, van de  
444 Crommenacker *et al.* 2011). Individual consistency in ROM measurements can however vary

445 with age (Herborn et al. 2016). ROM concentration was not influenced by the experimental  
446 manipulations of energetic constraints (wing load manipulation or food supplementation).  
447 These results contrast with the finding that food supplementation decreased ROM  
448 concentration but had no effect on antioxidant capacity in breeding great tit females (Giordano  
449 et al. 2015). In our study, ROM concentration strongly increased between incubation and the  
450 nestling feeding period in females. The increase between breeding stages in females might  
451 reflect the costs of reproduction: ROM concentration increased in breeding females, but not in  
452 non-breeding ones, in mice (Stier et al. 2012) and in breeding female Seychelles warblers  
453 naturally infected with malaria although the relationship was reversed in non-infected females  
454 (van de Crommenacker et al. 2012). In Eurasian kestrel, such increase in ROMs between  
455 mating and nestling rearing was only measured in males, not in females (Casagrande et al.  
456 2011). Alternatively oxidative damage might be adaptively reduced in females during egg-  
457 laying to avoid negative effects on offspring, a process called oxidative shielding (Giordano et  
458 al. 2015; Blount et al. 2016; Vitikainen et al. 2016).

459

#### 460 *A highly variable correlation structure*

461 Antioxidant capacity was positively correlated with ROM concentration when considering all  
462 individuals irrespective of their experimental treatment. This positive correlation could not be  
463 fully explained by permanent differences between individuals (van Noordwijk and de Jong  
464 1986; Wilson and Nussey 2009) as it was also found at the within-individual level. It is  
465 inconsistent with the hypothesis that the dynamics of protection against increased reactive  
466 oxygen species are dominated by the depletion of a limited pool of available circulating  
467 antioxidants. Indeed, in such a case, antioxidant defences and oxidative damages should  
468 correlate negatively or be modified in opposite ways depending on individual and  
469 environmental factors, such as was observed in several mammalian and bird species (Fletcher  
470 et al. 2013; Yang et al. 2013a; Hanssen et al. 2013; López-Arrabé et al. 2014, 2015; Marri and



471 Richner 2015). Such relationships were however highly dependent of the tissues and markers  
472 studied (Xu et al. 2014; Marasco et al. 2017). Regarding the two markers studied here, most  
473 studies directly testing their correlation showed a positive or non-significant relationship  
474 (Table 5), including when correlation was studied at the within-individual level (van de  
475 Crommenacker et al. 2011, 2012). Differences in the same direction were also observed in  
476 relation to individual characteristics, such as sex and breeding status (Stier et al. 2012; van de  
477 Crommenacker et al. 2012; Isaksson 2013; Wegmann et al. 2015a; Silva et al. 2018). Changes  
478 within individuals or in response to environmental or experimental conditions were mostly  
479 unrelated (Costantini et al. 2007, 2010; Bonisoli-Alquati et al. 2010; Costantini 2010b; Beaulieu  
480 et al. 2011; van de Crommenacker et al. 2011, 2012; Isaksson 2013; Wegmann et al. 2015b; Marri  
481 and Richner 2015; Vaugoyeau et al. 2015; Récapet et al. 2016c, 2017; Herborn et al. 2016) or in  
482 opposite directions (Costantini et al. 2008, 2010; Beaulieu et al. 2010; Marri and Richner 2015;  
483 Viblanc et al. 2018; Kulaszewicz et al. 2018), despite some exceptions (Piccione et al. 2013;  
484 Cornell and Williams 2017; Silva et al. 2018). In collared flycatchers, antioxidant protection as  
485 reflected by the OXY test thus seems to adaptively build up to face increased exposure to ROS  
486 in periods of higher energy demands, especially in females during the early breeding stages,  
487 when oxidative stress can be particularly harmful for developing offspring, but changes in  
488 habitat quality and food resources tend to impact these two markers independently, similar to  
489 what is observed in the present study.

490 The correlation between ROM concentration and antioxidant capacity was sensitive to  
491 variation in the conditions experienced by individuals. It was stronger in handicapped  
492 females, which experienced stronger energetic constraints compared to control ones.  
493 Conversely, experimentally increased food availability did not appear to influence the  
494 correlation between the markers, as there was no noticeable difference in this correlation  
495 between control and food-supplemented pairs. The strength of the correlation also increased  
496 in control birds from 2012 to 2014. This hints at a role of environmental conditions in

497 modulating the correlation between antioxidant defences and oxidative damages. Indeed,  
498 particularly sunny and dry meteorological conditions in 2012 and particularly rainy and cold  
499 conditions in 2014 resulted in strong differences in mortality rate among nestlings and thus in  
500 reproductive performances, with 2013 in between (mean fledging success in control nests  $\pm$   
501 S.D. (N) =  $4.7 \pm 2.6$  (89) in 2012,  $3.0 \pm 2.4$  (99) in 2013, and  $1.5 \pm 2.0$  (82) in 2014). The correlation  
502 between oxidative damage and antioxidant capacity might thus be stronger when  
503 environmental conditions are harsher, although this cannot be formally tested here with only  
504 three study years. These differences in correlation coefficients are not an artefact of a larger  
505 range of values for the markers (heterogeneity in individual responses) in more constrained  
506 conditions, as variances for ROM concentration and plasma antioxidant capacity actually  
507 tended to be larger in control females than in handicapped females, and in 2012 and 2013 than  
508 in 2014 (data not shown). Although the exact sources of the observed differences in the  
509 correlation remain speculative, our results clearly show that the relationships between  
510 different components of the oxidative balance are not fixed but may be modulated by  
511 individual or environmental factors.

512 Despite our limited understanding of oxidative stress and redox signalling across animal  
513 species (Halliwell and Gutteridge 2015; Jones and Sies 2015), a stable relationship between  
514 oxidative damage and antioxidant protection is often assumed: it underpins some proposed  
515 measures of oxidative stress, such as the ratio between a marker of ROS production/oxidative  
516 damages and a marker of antioxidant protection (e.g. the ratio between ROMs and antioxidant  
517 capacity initially proposed by Costantini et al. 2006, which use has declined in recent years;  
518 but see Cornell and Williams 2017; Injaian et al. 2018; Kulaszewicz et al. 2018), or the extraction  
519 of principal components from PCAs on a set of these markers (Hörak and Cohen 2010).  
520 Previous studies however failed to find consistent correlations between multiple markers of  
521 oxidative balance, despite large longitudinal samples (Romero-Haro and Alonso-Alvarez  
522 2014; Christensen et al. 2015). This could partly be due to the correlation structure being much

523 more labile than previously thought. Correlations between antioxidants alone were found to  
524 vary strikingly among bird species (Cohen and McGraw 2009), and correlation coefficients  
525 between ROMs and antioxidant capacity varied from 0.623 ( $P = 0.002$ ) to  $-0.533$  ( $P$  unknown)  
526 among domestic pig breeds (Brambilla et al. 2002). Our results show that such correlations  
527 could also vary at the within-individual level, according to environmental conditions.  
528 Redundancy of antioxidant systems is classically invoked to explain the low correlation  
529 between any individual antioxidant and markers of oxidative damages (Jacob 1995). Another  
530 non-exclusive explanation is that, when challenged, organisms would shift trade-offs in favour  
531 of those traits that are particularly important for fitness, so that these traits remain invariant  
532 in response to environmental challenges, a phenomenon originally termed canalisation in the  
533 context of development (Waddington 1942). This concept was recently extended to plastic  
534 traits such as redox markers: in young jackdaws, antioxidant protection is associated with  
535 survival but not influenced by experimental challenges, whereas markers of oxidative damage  
536 respond well to experimental challenges but do not predict survival (Boonekamp et al. 2018).  
537 As a result, variation in canalised traits would be uncoupled from variation in traits less crucial  
538 to fitness.

539 Beyond defining reference values for different environmental conditions and life-stages  
540 (Beaulieu and Costantini 2014), the stability of the correlation structure under varying  
541 conditions should thus be tested in any study species before using ratios or principal  
542 components as response variables. In particular, multivariate analyses and comparison of  
543 covariance matrices (Steppan et al. 2002; Garcia 2012) can be used to detect potential  
544 differences in the correlation structure. However, more mechanistic models of oxidative  
545 homeostasis may be required to properly measure oxidative stress. This type of mechanistic  
546 models is now relatively well implemented and widely used for studying energetic trade-offs,  
547 building upon thermodynamics and chemistry principles (Jusup et al. 2017). These models  
548 already include nutritional trade-offs due to dietary restrictions in some nutrients, especially

549 in plants. Other potential sources of trade-offs, such as oxidative stress, but also immune  
550 function or glucose homeostasis (Récapet et al. 2016b; Montoya et al. 2018), are however not  
551 modelled explicitly, probably due to the complexity of their interactions (Cohen et al. 2012).  
552 Theoretical models have however shown that multiple, partially independent physiological  
553 mechanisms underlying life-history trade-offs could relax the overall trade-off observed at the  
554 individual level and thus change the evolutionary outcome (Cohen et al. 2017). The  
555 physiological “machinery” evolved to respond to environmental challenges can be seen as an  
556 evolutionary constraint that does matter and should thus be taken into account when  
557 projecting the future evolution of organisms.

558

## 559 **Conclusions**

560 In our study, individual antioxidant capacity was repeatable within and between years, but  
561 ROM concentration was not, which suggest that an individual’s ability to acquire antioxidant-  
562 rich food plays an important role in its ability to respond to oxidative stress. The two markers  
563 were positively correlated, but this relationship was conditional on the energetic constraints  
564 experienced by each individual: correlations between markers were stronger when wing load  
565 was increased experimentally or when environmental conditions were naturally poorer. This  
566 probably comes from a tighter adjustment of antioxidant defences to ROS production when  
567 conditions were constrained, which could be particularly important to maintain cell redox  
568 homeostasis. Given the diversity of physiological and ecological factors that seem to affect the  
569 correlation structure between markers of oxidative state in a single population, the  
570 discrepancies in these correlations among studies, species and populations come as no  
571 surprise. Our results thus question our ability to interpret and make ecological inferences from  
572 markers of oxidative state without a more flexible, mechanistic understanding of their  
573 interactions.

574

575 **Compliance with Ethical Standards**

576 The authors declare that they have no conflict of interest.

577 All applicable international, national, and/or institutional guidelines for the care and use of  
578 animals were followed. Permission for catching and ringing adult and young birds was  
579 granted by the Ringing Centre from the Museum of Natural History in Stockholm (license  
580 number 471:M009 to C.R.). Permission for blood taking and experimental procedures was  
581 granted by the Ethical Committee for Experiments on Animals in Sweden (license number C  
582 108/7).

583

584 **Data availability**

585 The datasets and as well as the results of the MCMC sampling generated during the current  
586 study are available in the figshare repository, [PERSISTENT WEB LINK TO DATASETS].

587

588

589 **References**

- 590 Archer C, Hempenstall S, Royle N, et al (2015) Testing the effects of DL-alpha-tocopherol  
591 supplementation on oxidative damage, total antioxidant protection and the sex-specific  
592 responses of reproductive effort and lifespan to dietary manipulation in Australian field  
593 crickets (*Teleogryllus commodus*). *Antioxidants* 4:768–792. doi: 10.3390/antiox4040768
- 594 Ardia DR, Clotfelter ED (2007) Individual quality and age affect responses to an energetic  
595 constraint in a cavity-nesting bird. *Behav Ecol* 18:259–266. doi: 10.1093/beheco/arl078
- 596 Arnold KE, Herborn KA, Adam A, Alexander L (2015) Individual variation in the oxidative  
597 costs of personality traits. *Funct Ecol* 29:522–530. doi: 10.1111/1365-2435.12375
- 598 Avery S V (2014) Oxidative stress and cell function. In: Laher I (ed) *Systems Biology of Free*  
599 *Radicals and Antioxidants*. Springer-Verlag, Berlin Heidelberg, pp 89–112
- 600 Barja G (2007) Mitochondrial oxygen consumption and reactive oxygen species production are  
601 independently modulated: Implications for aging studies. *Rejuvenation Res* 10:215–224.  
602 doi: 10.1089/rej.2006.0516
- 603 Bates D, Maechler M, Bolker B, Walker S (2014) *lme4: Linear mixed-effects models using Eigen*  
604 *and S4*. R package version 1.1-7
- 605 Beamonte-Barrientos R, Verhulst S (2013) Plasma reactive oxygen metabolites and non-  
606 enzymatic antioxidant capacity are not affected by an acute increase of metabolic rate in  
607 zebra finches. *J Comp Physiol B* 183:675–683. doi: 10.1007/s00360-013-0745-4
- 608 Beaulieu M, Bischofberger I, Lorenz I, et al (2016) Reproducing butterflies do not increase  
609 intake of antioxidants when they could benefit from them. *Biol Lett* 12:20150941. doi:  
610 10.1098/rsbl.2015.0941
- 611 Beaulieu M, Costantini D (2014) Biomarkers of oxidative status: missing tools in conservation  
612 physiology. *Conserv Physiol* 2:cou014. doi: 10.1093/conphys/cou014

- 613 Beaulieu M, Geiger RE, Reim E, et al (2015a) Reproduction alters oxidative status when it is  
614 traded-off against longevity. *Evolution* (N Y) 69:1786–1796. doi: 10.1111/evo.12697
- 615 Beaulieu M, González-Acuña D, Thierry A-M, Polito MJ (2015b) Relationships between  
616 isotopic values and oxidative status: insights from populations of gentoo penguins.  
617 *Oecologia* 77:1211–1220. doi: 10.1007/s00442-015-3267-9
- 618 Beaulieu M, Reichert S, Le Maho Y, et al (2011) Oxidative status and telomere length in a long-  
619 lived bird facing a costly reproductive event. *Funct Ecol* 25:577–585. doi: 10.1111/j.1365-  
620 2435.2010.01825.x
- 621 Beaulieu M, Ropert-Coudert Y, Le Maho Y, et al (2010) Foraging in an oxidative environment:  
622 relationship between <sup>13</sup>C values and oxidative status in Adelie penguins. *Proc R Soc B*  
623 *Biol Sci* 277:1087–1092. doi: 10.1098/rspb.2009.1881
- 624 Beaulieu M, Schaefer HM (2014) The proper time for antioxidant consumption. *Physiol Behav*  
625 128C:54–59. doi: 10.1016/j.physbeh.2014.01.035
- 626 Blount JD, Vitikainen EIK, Stott I, Cant MA (2016) Oxidative shielding and the cost of  
627 reproduction. *Biol Rev* 91:483–497. doi: 10.1111/brv.12179
- 628 Bonawitz ND, Chatenay-Lapointe M, Pan Y, Shadel GS (2007) Reduced TOR signaling extends  
629 chronological life span via increased respiration and upregulation of mitochondrial gene  
630 expression. *Cell Metab* 5:265–277. doi: 10.1016/j.cmet.2007.02.009
- 631 Bonisoli-Alquati A, Mousseau TA, Møller AP, et al (2010) Increased oxidative stress in barn  
632 swallows from the Chernobyl region. *Comp Biochem Physiol Part A Mol Integr Physiol*  
633 155:205–210. doi: 10.1016/j.cbpa.2009.10.041
- 634 Boonekamp JJ, Mulder E, Verhulst S (2018) Canalisation in the wild: effects of developmental  
635 conditions on physiological traits are inversely linked to their association with fitness.  
636 *Ecol Lett* 21:857–864. doi: 10.1111/ele.12953

637 Brambilla G, Civitareale C, Ballerini A, et al (2002) Response to oxidative stress as a welfare  
638 parameter in swine. *Redox Rep* 7:159–163. doi: 10.1179/135100002125000406

639 Brand MD (2000) Uncoupling to survive? The role of mitochondrial inefficiency in ageing. *Exp*  
640 *Gerontol* 35:811–820. doi: 10.1016/S0531-5565(00)00135-2

641 Carr AC, Hawkins CL, Thomas SR, et al (2001) Relative reactivities of N-chloramines and  
642 hypochlorous acid with human plasma constituents. *Free Radic Biol Med* 30:526–536. doi:  
643 10.1016/S0891-5849(00)00495-0

644 Casagrande S, Dell’Omo G, Costantini D, et al (2011) Variation of a carotenoid-based trait in  
645 relation to oxidative stress and endocrine status during the breeding season in the  
646 Eurasian kestrel: A multi-factorial study. *Comp Biochem Physiol Part A Mol Integr*  
647 *Physiol* 160:16–26. doi: 10.1016/j.cbpa.2011.04.011

648 Cecere JG, Caprioli M, Carnevali C, et al (2016) Dietary flavonoids advance timing of moult  
649 but do not affect redox status of juvenile blackbirds ( *Turdus merula* ). *J Exp Biol*  
650 *jeb.141424*. doi: 10.1242/jeb.141424

651 Celi P, Trana A Di, Claps S (2010) Effects of plane of nutrition on oxidative stress in goats  
652 during the peripartum period. *Vet J* 184:95–99. doi: 10.1016/j.tvjl.2009.01.014

653 Chen AY, Lü J-M, Yao Q, Chen C (2016) Entacapone is an antioxidant more potent than  
654 vitamin C and vitamin E for scavenging of hypochlorous acid and peroxyxynitrite, and the  
655 inhibition of oxidative stress-induced cell death. *Med Sci Monit* 22:687–696. doi:  
656 10.12659/MSM.896462

657 Christensen LL, Selman C, Blount JD, et al (2015) Plasma markers of oxidative stress are  
658 uncorrelated in a wild mammal. *Ecol Evol* 5:5096–5108. doi: 10.1002/ece3.1771

659 Cohen AA, Isaksson C, Salguero-Gómez R (2017) Co-existence of multiple trade-off currencies  
660 shapes evolutionary outcomes. *PLoS One* 12:e0189124. doi:



661 10.1371/journal.pone.0189124

662 Cohen AA, Martin LB, Wingfield JC, et al (2012) Physiological regulatory networks: ecological  
663 roles and evolutionary constraints. *Trends Ecol Evol* 27:428–435. doi:  
664 10.1016/j.tree.2012.04.008

665 Cohen AA, McGraw KJ (2009) No simple measures for antioxidant status in birds: Complexity  
666 in inter- and intraspecific correlations among circulating antioxidant types. *Funct Ecol*  
667 23:310–320. doi: 10.1111/j.1365-2435.2009.01540.x

668 Cohen AA, McGraw KJ, Robinson WD (2009) Serum antioxidant levels in wild birds vary in  
669 relation to diet, season, life history strategy, and species. *Oecologia* 161:673–683. doi:  
670 10.1007/s00442-009-1423-9

671 Cornell A, Williams TD (2017) Variation in developmental trajectories of physiological and  
672 somatic traits in a common songbird approaching fledging. *J Exp Biol* 220:4060–4067. doi:  
673 10.1242/jeb.162248

674 Costantini D (2008) Oxidative stress in ecology and evolution: lessons from avian studies. *Ecol*  
675 *Lett* 11:1238–1251. doi: 10.1111/j.1461-0248.2008.01246.x

676 Costantini D (2010a) Complex trade-offs in the pigeon (*Columba livia*): egg antioxidant  
677 capacity and female serum oxidative status in relation to diet quality. *J Comp Physiol B*  
678 180:731–739. doi: 10.1007/s00360-010-0456-z

679 Costantini D (2011) On the measurement of circulating antioxidant capacity and the nightmare  
680 of uric acid. *Methods Ecol Evol* 2:321–325. doi: 10.1111/j.2041-210X.2010.00080.x

681 Costantini D (2010b) Effects of diet quality on serum oxidative status and body mass in male  
682 and female pigeons during reproduction. *Comp Biochem Physiol Part A Mol Integr*  
683 *Physiol* 156:294–299. doi: 10.1016/j.cbpa.2010.02.021

684 Costantini D, Angeletti D, Strinati C, et al (2018) Dietary antioxidants, food deprivation and

685 growth affect differently oxidative status of blood and brain in juvenile European seabass  
686 ( *Dicentrarchus labrax* ). *Comp Biochem Physiol Part A Mol Integr Physiol* 216:1–7. doi:  
687 10.1016/j.cbpa.2017.10.032

688 Costantini D, Carello L, Fanfani A (2010) Relationships among oxidative status, breeding  
689 conditions and life-history traits in free-living Great Tits *Parus major* and Common  
690 Starlings *Sturnus vulgaris*. *Ibis* (Lond 1859) 152:793–802. doi: 10.1111/j.1474-  
691 919X.2010.01052.x

692 Costantini D, Casagrande S, De Filippis S, et al (2006) Correlates of oxidative stress in wild  
693 kestrel nestlings (*Falco tinnunculus*). *J Comp Physiol B* 176:329–337. doi: 10.1007/s00360-  
694 005-0055-6

695 Costantini D, Coluzza C, Fanfani A, Dell’Omo G (2007) Effects of carotenoid supplementation  
696 on colour expression, oxidative stress and body mass in rehabilitated captive adult  
697 kestrels (*Falco tinnunculus*). *J Comp Physiol B* 177:723–731. doi: 10.1007/s00360-007-  
698 0169-0

699 Costantini D, Dell’Ariccia G, Lipp H-P (2008) Long flights and age affect oxidative status of  
700 homing pigeons (*Columba livia*). *J Exp Biol* 211:377–381. doi: 10.1242/jeb.012856

701 Costantini D, Møller AP (2008) Carotenoids are minor antioxidants for birds. *Funct Ecol*  
702 22:367–370. doi: 10.1111/j.1365-2435.2007.01366.x

703 Costantini D, Verhulst S (2009) Does high antioxidant capacity indicate low oxidative stress?  
704 *Funct Ecol* 23:506–509. doi: 10.1111/j.1365-2435.2009.01546.x

705 Criscuolo F, Gonzalez-Barroso M del M, Bouillaud F, et al (2005) Mitochondrial uncoupling  
706 proteins: New perspectives for evolutionary ecologists. *Am Nat* 166:686–699. doi:  
707 10.1086/497439

708 de Groot H, Rauen U (1998) Tissue injury by reactive oxygen species and the protective effects

709 of flavonoids. *Fundam Clin Pharmacol* 12:249–255. doi: 10.1111/j.1472-  
710 8206.1998.tb00951.x

711 Finkel T (2011) Signal transduction by reactive oxygen species. *J Cell Biol* 194:7–15. doi:  
712 10.1083/jcb.201102095

713 Fletcher QE, Selman C, Boutin S, et al (2013) Oxidative damage increases with reproductive  
714 energy expenditure and is reduced by food-supplementation. *Evolution* 67:1527–1536.  
715 doi: 10.1111/evo.12014

716 Folkes LK, Candeias LP, Wardman P (1995) Kinetics and mechanisms of hypochlorous acid  
717 reactions. *Arch Biochem Biophys* 323:120–126. doi: 10.1006/abbi.1995.0017

718 Fowler MA, Paquet M, Legault V, et al (2018) Physiological predictors of reproductive  
719 performance in the European Starling (*Sturnus vulgaris*). *Front Zool* 15:45. doi:  
720 10.1186/s12983-018-0288-3

721 Garcia C (2012) A simple procedure for the comparison of covariance matrices. *BMC Evol Biol*  
722 12:222. doi: 10.1186/1471-2148-12-222

723 Geiger S, Le Vaillant M, Lebard T, et al (2012) Catching-up but telomere loss: half-opening the  
724 black box of growth and ageing trade-off in wild king penguin chicks. *Mol Ecol* 21:1500–  
725 1510. doi: 10.1111/j.1365-294X.2011.05331.x

726 Gems D, Partridge L (2013) Genetics of longevity in model organisms: Debates and paradigm  
727 shifts. *Annu Rev Physiol* 75:621–644. doi: 10.1146/annurev-physiol-030212-183712

728 Giordano M, Costantini D, Pick JL, Tschirren B (2015) Female oxidative status, egg antioxidant  
729 protection and eggshell pigmentation: a supplemental feeding experiment in great tits.  
730 *Behav Ecol Sociobiol* 69:777–785. doi: 10.1007/s00265-015-1893-1

731 Glazier DS (2015) Is metabolic rate a universal ‘pacemaker’ for biological processes? *Biol Rev*  
732 90:377–407. doi: 10.1111/brv.12115

733 Hadfield JD (2010) MCMC methods for multi-response generalized linear mixed models: The  
734 MCMCglmm R package. *J Stat Softw* 33:1–22. doi: 10.18637/jss.v033.i02

735 Halliwell B, Gutteridge JMC (2015) *Free Radicals in Biology and Medicine*, 5th editio. Oxford  
736 University Press

737 Hanssen SA, Bustnes JO, Schnug L, et al (2013) Antiparasite treatments reduce humoral  
738 immunity and impact oxidative status in raptor nestlings. *Ecol Evol* 3:5157–5166. doi:  
739 10.1002/ece3.891

740 Herborn KA, Coffey J, Larcombe SD, et al (2011) Oxidative profile varies with personality in  
741 European greenfinches. *J Exp Biol* 214:1732–1739. doi: 10.1242/jeb.051383

742 Herborn KA, Daunt F, Heidinger BJ, et al (2016) Age, oxidative stress exposure and fitness in  
743 a long-lived seabird. *Funct Ecol* 30:913–921. doi: 10.1111/1365-2435.12578

744 Hõrak P, Cohen AA (2010) How to measure oxidative stress in an ecological context:  
745 methodological and statistical issues. *Funct Ecol* 24:960–970. doi: 10.1111/j.1365-  
746 2435.2010.01755.x

747 Injaian AS, Taff CC, Patricelli GL (2018) Experimental anthropogenic noise impacts avian  
748 parental behaviour, nestling growth and nestling oxidative stress. *Anim Behav* 136:31–  
749 39. doi: 10.1016/J.ANBEHAV.2017.12.003

750 Isaksson C (2013) Opposing effects on glutathione and reactive oxygen metabolites of sex,  
751 habitat, and spring date, but no effect of increased breeding density in great tits (*Parus*  
752 *major*). *Ecol Evol* 3:2730–2738. doi: 10.1002/ece3.663

753 Isaksson C, Sheldon BC, Uller T (2011) The challenges of integrating oxidative stress into life-  
754 history biology. *Bioscience* 61:194–202. doi: 10.1525/bio.2011.61.3.5

755 Jacob RA (1995) The integrated antioxidant system. *Nutr Res* 15:755–766. doi: 10.1016/0271-  
756 5317(95)00041-G

757 Jones DP, Sies H (2015) The redox code. *Antioxid Redox Signal* 23:734–746. doi:  
758 10.1089/ars.2015.6247

759 Jusup M, Sousa T, Domingos T, et al (2017) Physics of metabolic organization. *Phys Life Rev*  
760 20:1–39. doi: 10.1016/j.plrev.2016.09.001

761 Kanazawa K, Ashida H (1998) Dietary hydroperoxides of linoleic acid decompose to  
762 aldehydes in stomach before being absorbed into the body. *Biochim Biophys Acta - Lipids*  
763 *Lipid Metab* 1393:349–361. doi: 10.1016/S0005-2760(98)00089-7

764 Kulaszewicz I, Wojczulanis-Jakubas K, Jakubas D (2018) Breeding phased dependent  
765 oxidative balance in a small High Arctic seabird, the little auk. *J Avian Biol* 49:e01702. doi:  
766 10.1111/jav.01702

767 Kuznetsova A, Brockhoff PB, Christensen RHB (2016) lmerTest: Tests in Linear Mixed Effects  
768 Models. R package version 2.0-32

769 Leclaire S, Bourret V, Blanchard P, et al (2015) Carotenoids increase immunity and sex  
770 specifically affect color and redox homeostasis in a monochromatic seabird. *Behav Ecol*  
771 *Sociobiol* 69:1097–1111. doi: 10.1007/s00265-015-1922-0

772 Lendvai AZ, Ouyang JQ, Schoenle L a, et al (2014) Experimental food restriction reveals  
773 individual differences in corticosterone reaction norms with no oxidative costs. *PLoS One*  
774 9:e110564. doi: 10.1371/journal.pone.0110564

775 López-Arrabé J, Cantarero A, Pérez-Rodríguez L, et al (2014) Plumage ornaments and  
776 reproductive investment in relation to oxidative status in the Iberian Pied Flycatcher  
777 (*Ficedula hypoleuca iberiae*). *Can J Zool* 92:1019–1027. doi: 10.1139/cjz-2014-0199

778 López-Arrabé J, Cantarero A, Pérez-Rodríguez L, et al (2015) Nest-dwelling ectoparasites  
779 reduce antioxidant defences in females and nestlings of a passerine: a field experiment.  
780 *Oecologia* 179:29–41. doi: 10.1007/s00442-015-3321-7

781 Maestre R, Douglass JD, Kodukula S, et al (2013) Alterations in the intestinal assimilation of  
782 oxidized PUFAs are ameliorated by a polyphenol-rich grape seed extract in an in vitro  
783 model and Caco-2 cells. *J Nutr* 143:295–301. doi: 10.3945/jn.112.160101

784 Marasco V, Stier A, Boner W, et al (2017) Environmental conditions can modulate the links  
785 among oxidative stress, age, and longevity. *Mech Ageing Dev* 164:100–107. doi:  
786 10.1016/j.mad.2017.04.012

787 Markó G, Costantini D, Michl G, Török J (2011) Oxidative damage and plasma antioxidant  
788 capacity in relation to body size, age, male sexual traits and female reproductive  
789 performance in the collared flycatcher (*Ficedula albicollis*). *J Comp Physiol B* 181:73–81.  
790 doi: 10.1007/s00360-010-0502-x

791 Marri V, Richner H (2015) Immune response, oxidative stress and dietary antioxidants in great  
792 tit nestlings. *Comp Biochem Physiol Part A Mol Integr Physiol* 179:192–196. doi:  
793 10.1016/j.cbpa.2014.10.013

794 Martin JGA, Nussey DH, Wilson AJ, Réale D (2011) Measuring individual differences in  
795 reaction norms in field and experimental studies: A power analysis of random regression  
796 models. *Methods Ecol Evol* 2:362–374. doi: 10.1111/j.2041-210X.2010.00084.x

797 Meitern R, Sild E, Kilk K, et al (2013) On the methodological limitations of detecting oxidative  
798 stress: effects of paraquat on measures of oxidative status in greenfinches. *J Exp Biol*  
799 216:2713–2721. doi: 10.1242/jeb.087528

800 Metcalfe NB, Alonso-Alvarez C (2010) Oxidative stress as a life-history constraint: the role of  
801 reactive oxygen species in shaping phenotypes from conception to death. *Funct Ecol*  
802 24:984–996. doi: 10.1111/j.1365-2435.2010.01750.x

803 Monaghan P, Metcalfe NB, Torres R (2009) Oxidative stress as a mediator of life history trade-  
804 offs: mechanisms, measurements and interpretation. *Ecol Lett* 12:75–92. doi:

805 10.1111/j.1461-0248.2008.01258.x

806 Montoya B, Briga M, Jimeno B, et al (2018) Baseline glucose level is an individual trait that is  
807 negatively associated with lifespan and increases due to adverse environmental  
808 conditions during development and adulthood. *J Comp Physiol B* 188:517–526. doi:  
809 10.1007/s00360-017-1143-0

810 Moreno J, Merino S, Potti J, et al (1999) Maternal energy expenditure does not change with  
811 flight costs or food availability in the pied flycatcher (*Ficedula hypoleuca*): costs and  
812 benefits for nestlings. *Behav Ecol Sociobiol* 46:244–251. doi: 10.1007/s002650050616

813 Nakagawa S, Schielzeth H (2010) Repeatability for Gaussian and non-Gaussian data: a  
814 practical guide for biologists. *Biol Rev Camb Philos Soc* 85:935–956. doi: 10.1111/j.1469-  
815 185X.2010.00141.x

816 Nguyen Q, Southwell-Keely PT (2007) Reaction of  $\gamma$ -Tocopherol with Hypochlorous Acid.  
817 *Lipids* 42:171–178. doi: 10.1007/s11745-006-3016-2

818 Niki E (2014) Role of vitamin E as a lipid-soluble peroxy radical scavenger: in vitro and in  
819 vivo evidence. *Free Radic Biol Med* 66:3–12. doi: 10.1016/j.freeradbiomed.2013.03.022

820 Nikolaidis MG, Jamurtas AZ, Paschalis V, et al (2008) The effect of muscle-damaging exercise  
821 on blood and skeletal muscle oxidative stress: Magnitude and time-course  
822 considerations. *Sport Med* 38:579–606. doi: 10.2165/00007256-200838070-00005

823 Pattison DI, Hawkins CL, Davies MJ (2003) Hypochlorous acid-mediated oxidation of lipid  
824 components and antioxidants present in low-density lipoproteins: absolute rate constants  
825 for the reaction of hypochlorous acid with protein side chains and peptide bonds. *Chem*  
826 *Res Toxicol* 16:439–449. doi: 10.1021/tx025670s

827 Pennathur S, Maitra D, Byun J, et al (2010) Potent antioxidative activity of lycopene: A  
828 potential role in scavenging hypochlorous acid. *Free Radic Biol Med* 49:205–213. doi:

829 10.1016/j.freeradbiomed.2010.04.003

830 Pérez-Rodríguez L, Romero-Haro AA, Sternalski A, et al (2015) Measuring oxidative stress:  
831 The confounding effect of lipid concentration in measures of lipid peroxidation. *Physiol*  
832 *Biochem Zool* 88:345–351. doi: 10.1086/680688

833 Piccione G, Casella S, Giannetto C, et al (2013) Oxidative stress associated with road  
834 transportation in ewes. *Small Rumin Res* 112:235–238. doi:  
835 10.1016/j.smallrumres.2012.11.001

836 Plummer M, Best N, Cowles K, Vines K (2006) CODA: Convergence Diagnosis and Output  
837 Analysis for MCMC. *R News* 6:7–11

838 Récapet C, Bize P, Doligez B (2017) Food availability modulates differences in parental effort  
839 between dispersing and philopatric birds. *Behav Ecol* 28:688–697. doi:  
840 10.1093/beheco/arx017

841 Récapet C, Daniel G, Taroni J, et al (2016a) Food supplementation mitigates dispersal-  
842 dependent differences in nest defence in a passerine bird. *Biol Lett* 12:20160097. doi:  
843 10.1098/rsbl.2016.0097

844 Récapet C, Sibeaux A, Cauchard L, et al (2016b) Selective disappearance of individuals with  
845 high levels of glycated haemoglobin in a free-living bird. *Biol Lett* 12:20160243. doi:  
846 10.1098/rsbl.2016.0243

847 Récapet C, Zahariev A, Blanc S, et al (2016c) Differences in the oxidative balance of dispersing  
848 and non-dispersing individuals: an experimental approach in a passerine bird. *BMC Evol*  
849 *Biol* 16:125. doi: 10.1186/s12862-016-0697-x

850 Reichert S, Stier A, Zahn S, et al (2014) Increased brood size leads to persistent eroded  
851 telomeres. *Front Ecol Evol* 2:1–11. doi: 10.3389/fevo.2014.00009

852 Romero-Haro AA, Alonso-Alvarez C (2014) Covariation in oxidative stress markers in the



853 blood of nestling and adult birds. *Physiol Biochem Zool* 87:353–362. doi: 10.1086/674432

854 Saino N, Caprioli M, Romano M, et al (2011) Antioxidant defenses predict long-term survival  
855 in a passerine bird. *PLoS One* 6:e19593. doi: 10.1371/journal.pone.0019593

856 Salin K, Auer SK, Rey B, et al (2015a) Variation in the link between oxygen consumption and  
857 ATP production, and its relevance for animal performance. *Proc R Soc B Biol Sci*  
858 282:20151028. doi: 10.1098/rspb.2015.1028

859 Salin K, Auer SK, Rudolf AM, et al (2015b) Individuals with higher metabolic rates have lower  
860 levels of reactive oxygen species in vivo. *Biol Lett* 11:20150538. doi:  
861 10.1098/rsbl.2015.0538

862 Sanz JJ, Kranenbarg S, Tinbergen JM (2000) Differential response by males and females to  
863 manipulation of partner contribution in the great tit (*Parus major*). *J Anim Ecol* 69:74–84.  
864 doi: 10.1046/j.1365-2656.2000.00373.x

865 Schieber M, Chandel NS (2014) ROS function in redox signaling and oxidative stress. *Curr Biol*  
866 24:R453–R462. doi: 10.1016/j.cub.2014.03.034

867 Sena LA, Chandel NS (2012) Physiological roles of mitochondrial reactive oxygen species. *Mol*  
868 *Cell* 48:158–166. doi: 10.1016/j.molcel.2012.09.025

869 Silva LR, Lardy S, Ferreira AC, et al (2018) Females pay the oxidative cost of dominance in a  
870 highly social bird. *Anim Behav* 144:135–146. doi: 10.1016/J.ANBEHAV.2018.08.006

871 Speakman JR, Krol E (2010) The heat dissipation limit theory and evolution of life histories in  
872 endotherms-Time to dispose of the disposable soma theory? *Integr Comp Biol* 50:793–  
873 807. doi: 10.1093/icb/icq049

874 Speakman JR, Selman C (2011) The free-radical damage theory: Accumulating evidence  
875 against a simple link of oxidative stress to ageing and lifespan. *Bioessays* 33:255–259. doi:  
876 10.1002/bies.201000132

877 Spiegelhalter DJ, Best NG, Carlin BP, van der Linde A (2002) Bayesian measures of model  
878 complexity and fit. *J R Stat Soc Ser B* 64:583–639. doi: 10.1111/1467-9868.00353

879 Stearns SC (1989) Trade-offs in life-history evolution. *Funct Ecol* 3:259–268. doi:  
880 10.2307/2389364

881 Steppan SJ, Phillips PC, Houle D (2002) Comparative quantitative genetics: evolution of the G  
882 matrix. *Trends Ecol Evol* 17:320–327. doi: 10.1016/S0169-5347(02)02505-3

883 Stier A, Bize P, Habolde C, et al (2014a) Mitochondrial uncoupling prevents cold-induced  
884 oxidative stress: a case study using UCP1 knockout mice. *J Exp Biol* 217:624–630. doi:  
885 10.1242/jeb.092700

886 Stier A, Massemin S, Criscuolo F (2014b) Chronic mitochondrial uncoupling treatment  
887 prevents acute cold-induced oxidative stress in birds. *J Comp Physiol B* 184:1021–1029.  
888 doi: 10.1007/s00360-014-0856-6

889 Stier A, Reichert S, Massemin S, et al (2012) Constraint and cost of oxidative stress on  
890 reproduction: correlative evidence in laboratory mice and review of the literature. *Front*  
891 *Zool* 9:37. doi: 10.1186/1742-9994-9-37

892 Talegawkar S a, Beretta G, Yeum K-J, et al (2009) Total antioxidant performance is associated  
893 with diet and serum antioxidants in participants of the diet and physical activity  
894 substudy of the Jackson Heart Study. *J Nutr* 139:1964–1971. doi: 10.3945/jn.109.107870

895 Vaanholt LM, Milne A, Zheng Y, et al (2016) Oxidative costs of reproduction: Oxidative stress  
896 in mice fed standard and low antioxidant diets. *Physiol Behav* 154:1–7. doi:  
897 10.1016/j.physbeh.2015.11.009

898 Valko M, Leibfritz D, Moncol J, et al (2007) Free radicals and antioxidants in normal  
899 physiological functions and human disease. *Int J Biochem Cell Biol* 39:44–84. doi:  
900 10.1016/j.biocel.2006.07.001

901 van de Crommenacker J, Komdeur J, Burke T, Richardson DS (2011) Spatio-temporal variation  
902 in territory quality and oxidative status: a natural experiment in the Seychelles warbler  
903 (*Acrocephalus sechellensis*). *J Anim Ecol* 80:668–680. doi: 10.1111/j.1365-  
904 2656.2010.01792.x

905 van de Crommenacker J, Richardson DS, Koltz a. M, et al (2012) Parasitic infection and  
906 oxidative status are associated and vary with breeding activity in the Seychelles warbler.  
907 *Proc R Soc B Biol Sci* 279:1466–1476. doi: 10.1098/rspb.2011.1865

908 van Noordwijk AJ, de Jong G (1986) Acquisition and allocation of resources: Their influence  
909 on variation in life history tactics. *Am Nat* 128:137–142. doi: 10.1086/284547

910 Vaugoyeau M, Decenciere B, Perret S, et al (2015) Is oxidative status influenced by dietary  
911 carotenoid and physical activity after moult in the great tit (*Parus major*)? *J Exp Biol*  
912 218:2106–2115. doi: 10.1242/jeb.111039

913 Veskokoukis AS, Nikolaidis MG, Kyparos A, Kouretas D (2009) Blood reflects tissue oxidative  
914 stress depending on biomarker and tissue studied. *Free Radic Biol Med* 47:1371–1374.  
915 doi: 10.1016/j.freeradbiomed.2009.07.014

916 Viblanc VA, Schull Q, Roth JD, et al (2018) Maternal oxidative stress and reproduction: Testing  
917 the constraint, cost and shielding hypotheses in a wild mammal. *Funct Ecol* 32:722–735.  
918 doi: 10.1111/1365-2435.13032

919 Vitikainen EIK, Cant MA, Sanderson JL, et al (2016) Evidence of oxidative shielding of  
920 offspring in a wild mammal. *Front Ecol Evol* 4:58. doi: 10.3389/fevo.2016.00058

921 Waddington CH (1942) Canalization of development and the inheritance of acquired  
922 characters. *Nature* 150:563–565. doi: 10.1038/150563a0

923 Wang Y, Yang M, Lee S-G, et al (2012) Dietary total antioxidant capacity is associated with diet  
924 and plasma antioxidant status in healthy young adults. *J Acad Nutr Diet* 112:1626–1635.

925 doi: 10.1016/j.jand.2012.06.007

926 Wegmann M, Voegeli B, Richner H (2015a) Oxidative status and reproductive effort of great  
927 tits in a handicapping experiment. *Behav Ecol* 26:747–754. doi: 10.1093/beheco/arv006

928 Wegmann M, Voegeli B, Richner H (2015b) Physiological responses to increased brood size  
929 and ectoparasite infestation: Adult great tits favour self-maintenance. *Physiol Behav*  
930 141:127–134. doi: 10.1016/j.physbeh.2015.01.017

931 Wilson AJ, Nussey DH (2009) What is individual quality? An evolutionary perspective. *Trends*  
932 *Ecol Evol* 25:207–214. doi: 10.1016/j.tree.2009.10.002

933 Xu Y-C, Yang D-B, Speakman JR, Wang D-H (2014) Oxidative stress in response to natural and  
934 experimentally elevated reproductive effort is tissue dependent. *Funct Ecol* 28:402–410.  
935 doi: 10.1111/1365-2435.12168

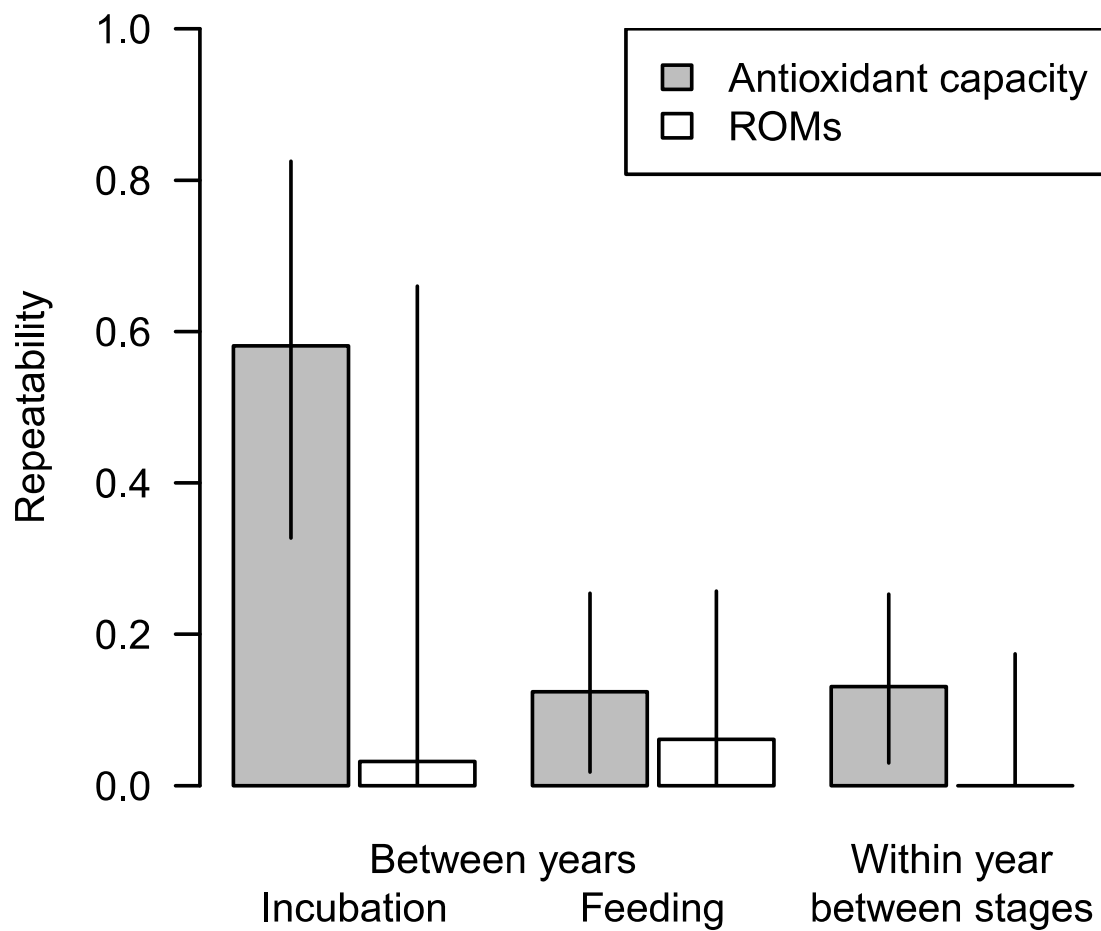
936 Yang D-B, Xu Y-C, Wang D-H, Speakman JR (2013a) Effects of reproduction on immuno-  
937 suppression and oxidative damage, and hence support or otherwise for their roles as  
938 mechanisms underpinning life history trade-offs, are tissue and assay dependent. *J Exp*  
939 *Biol* 216:4242–4250. doi: 10.1242/jeb.092049

940 Yang M, Chung S-J, Floegel A, et al (2013b) Dietary antioxidant capacity is associated with  
941 improved serum antioxidant status and decreased serum C-reactive protein and plasma  
942 homocysteine concentrations. *Eur J Nutr* 52:1901–1911. doi: 10.1007/s00394-012-0491-5

943

944

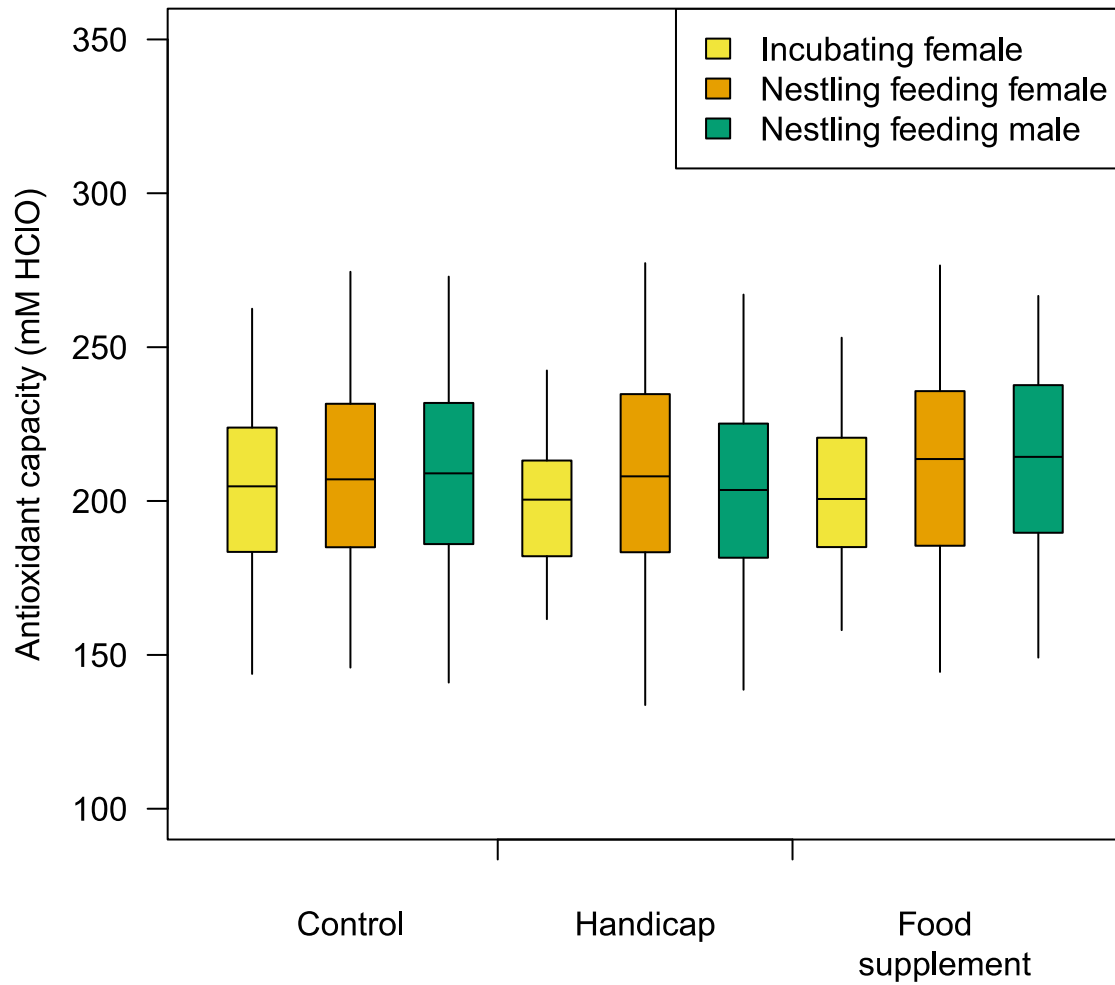
945 **Fig. 1 Repeatability estimates and 95% confidence intervals for antioxidant capacity (in**  
946 **grey) and ROMs concentration (in white) over different time scales. Males were only**  
947 **sampled during the nestling feeding stage, so repeatability in incubation between years and**  
948 **between breeding stages within years was only estimated for females.**



949

950

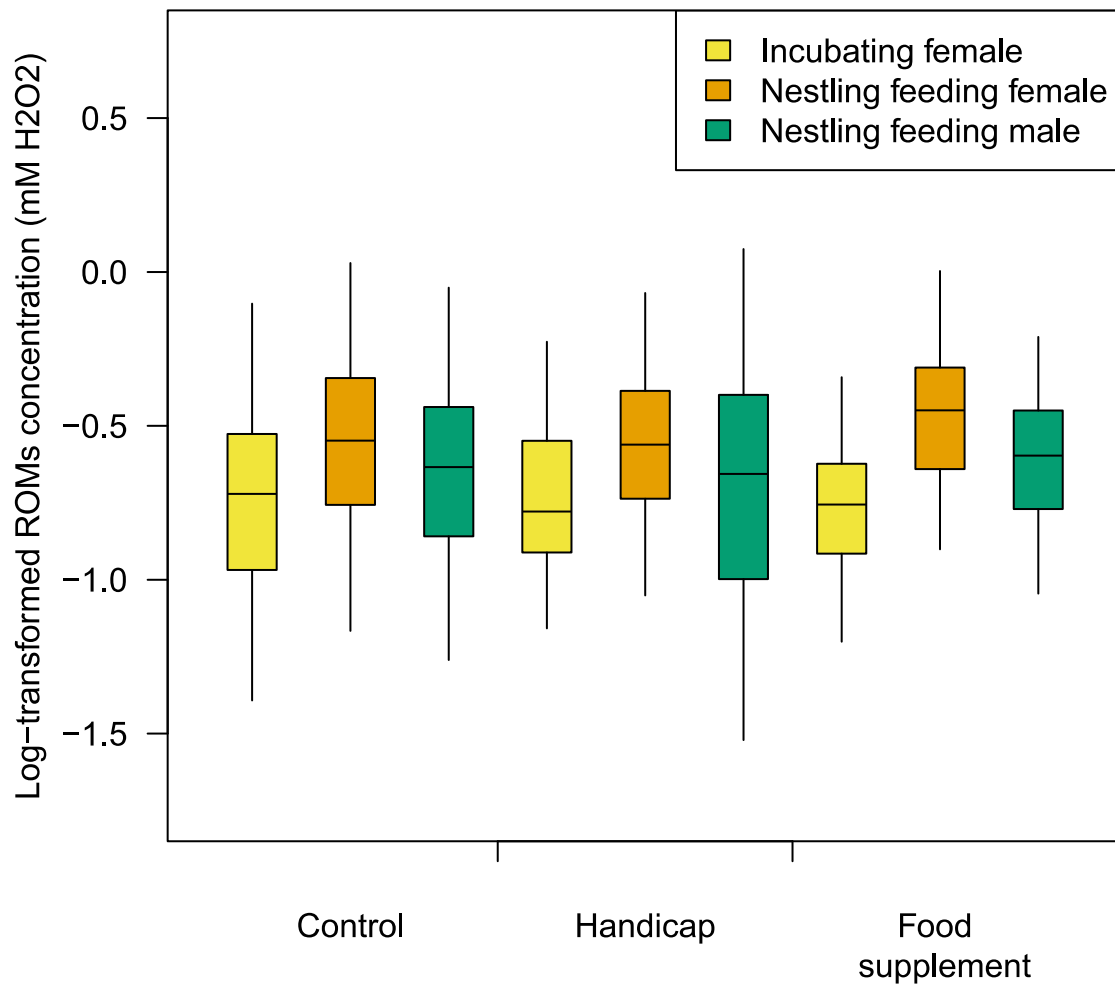
951 **Fig. 2 Antioxidant capacity in collared flycatchers according to experimental treatment, sex**  
952 **and breeding stage (incubation = pre-treatment, feeding = post-treatment).** Males were only  
953 sampled during the nestling feeding stage. Values were corrected for the year effect.



954

955

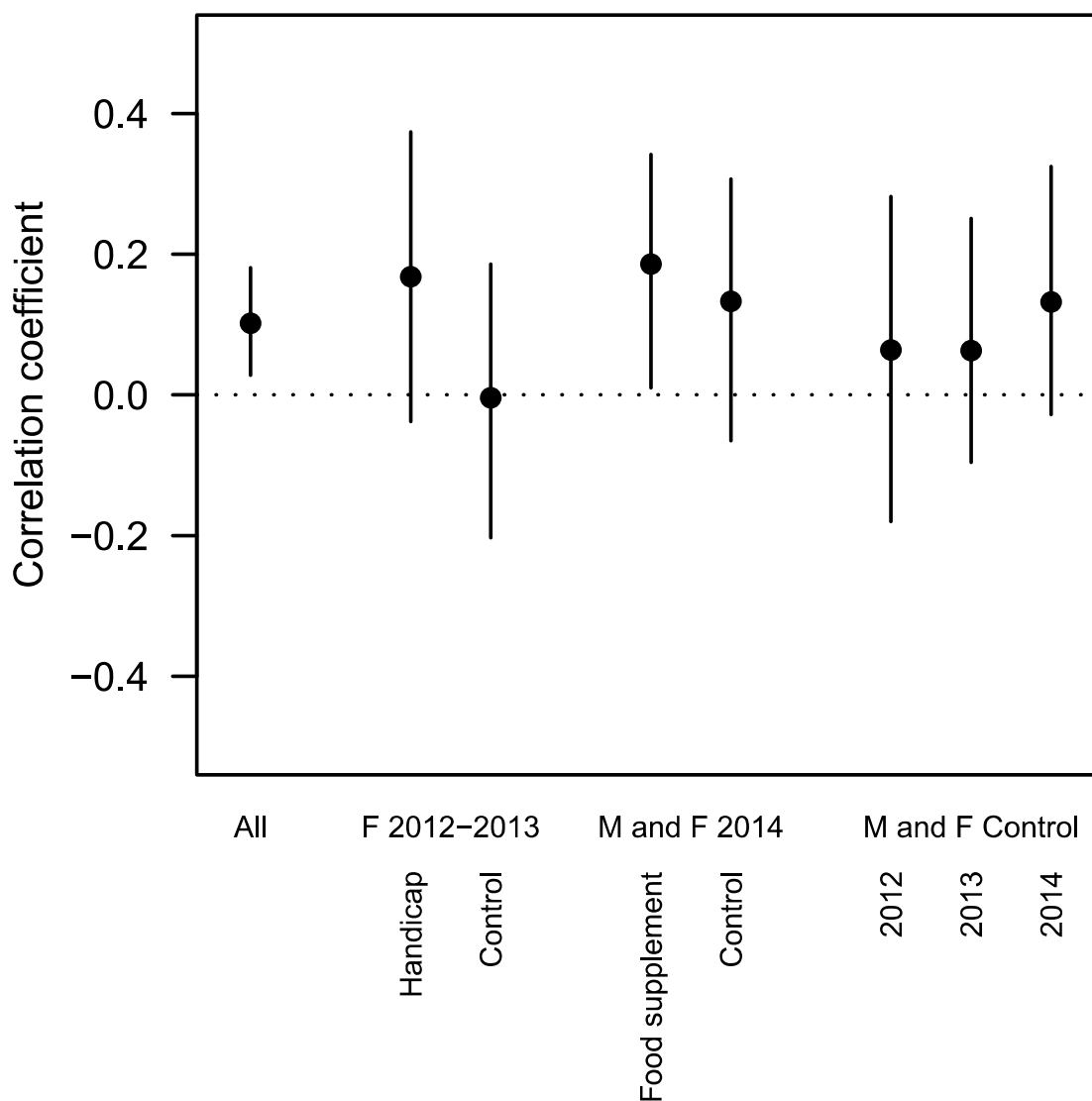
956 Fig. 3 Log-transformed ROMs concentration in collared flycatchers according to  
957 experimental treatment, sex and breeding stage (incubation = pre-treatment, feeding = post-  
958 treatment). Males were only sampled during the nestling feeding stage. Values were corrected  
959 for the year effect.



960

961

962 **Fig. 4** Estimates and 95% credibility intervals for the phenotypic correlation between  
 963 **antioxidant capacity and ROMs concentration depending on experimental treatments and**  
 964 **years.** Variables were standardized between years, sexes and treatments, so that the  
 965 correlation coefficient obtained when pooling multiple groups would not be influenced by  
 966 differences between years, sexes and treatments in antioxidant capacity or ROMs  
 967 concentration. "F" refers to females and "M" to males. The effect of feather handicap is only  
 968 represented for females because males were not directly manipulated.



969  
970



971 **Table 1: Repeatability of the measures of reactive oxygen metabolites (ROMs) and antioxidant capacity (OXY test) at different time scales**  
 972 **and different breeding stages.** Estimates are obtained from linear-mixed models, 95% confidence interval from parametric bootstraps and P  
 973 values from likelihood-ratio tests. The number of individuals is given in parentheses below the number of observations.

Repeatability	Sex	Variable	N	<i>r</i>	CI <sub>95%</sub>	P
Between years during incubation	F	OXY	251 (234)	<b>0.581</b>	<b>[0.327; 0.825]</b>	<b>0.02</b>
Between years during incubation	F	ROMs	214 (202)	0.032	[0; 0.660]	0.44
Between years during nestling feeding	F & M	OXY	838 (652)	<b>0.124</b>	<b>[0.018; 0.254]</b>	<b>0.02</b>
Between years during nestling feeding	F & M	ROMs	662 (535)	0.061	[0; 0.257]	0.24
Between breeding stages within a year	F	OXY	681 (359)	<b>0.131</b>	<b>[0.030; 0.253]</b>	<b>0.02</b>
Between breeding stages within a year	F	ROMs	535 (310)	0.000	[0; 0.174]	0.50

974

975

976 **Table 2: Effect of the wing load manipulation in 2012 and 2013 on the correlation between reactive oxygen metabolites (ROMs) and**  
 977 **antioxidant capacity (OXY test).** Mode and 95% credibility interval of the posterior distribution of the coefficients of correlation between ROM  
 978 concentration and antioxidant capacity, for different experimental groups, sexes and years. The number of individuals is given in parentheses  
 979 below the sample sizes when the samples covered multiple years, and thus some individuals were sampled more than once. When 10 or more  
 980 individual birds were measured repeatedly, the within-individual correlation (residual correlation) is reported separately from the between-  
 981 individual correlation.

Treatment	Sex	N	DIC	Between-individual correlation	Within-individual correlation	Total phenotypic correlation
Both groups, with the same correlation coefficients	F	187 (176)	<b>982.4</b>	0.143 [-0.477; 0.729]	0.088 [-0.177; 0.376]	0.099 [-0.045; 0.245]
Both groups, with different correlation coefficients	F	187 (176)	<b>969.9</b>	0.279 [-0.364; 0.731]	0.151 [-0.273; 0.475]	in manipulated females
					-0.083 [-0.368; 0.275]	in control females
Wing load manipulation	F	91 (87)		-	-	0.168 [-0.038; 0.374]
Control	F	96 (93)		-	-	-0.004 [-0.203; 0.186]
Both groups, with the same correlation coefficients	M	220 (191)	1195.6	0.337 [-0.343; 0.714]	0.028 [-0.172; 0.217]	0.046 [-0.075; 0.189]

Both groups, with different correlation coefficients	M	220 (191)	1191.6	0.320 [-0.342; 0.726]	-0.065 [-0.347; 0.171]	in males paired with manipulated females
					0.104 [-0.163; 0.360]	in control males
Wing load manipulation	M	120 (112)		-	-	0.028 [-0.165; 0.202]
Control	M	100 (94)		-	-	0.138 [-0.062; 0.331]

982

983

984 **Table 3: Effect of the food supplementation in 2014 on the correlation between reactive oxygen metabolites (ROMs) and antioxidant capacity**  
 985 **(OXY test) with both sexes pooled.** Mode and 95% credibility interval of the posterior distribution of the coefficients of correlation between ROM  
 986 concentration and antioxidant capacity for males and females in 2014.

Treatment	N	DIC	Phenotypic correlation
Both groups, with the same correlation coefficients	239	1283.5	<b>0.169 [0.050; 0.290]</b>
Both groups, with different correlation coefficients	239	1288.0	<b>0.181 [0.006; 0.339]</b> in the food supplemented group 0.148 [-0.055; 0.313] in the control group
Food supplementation	128		<b>0.186 [0.010; 0.342]</b>
Control	111		0.133 [-0.065; 0.307] 0.132 [-0.028 0.325]

987

988

989 **Table 4: Temporal and seasonal variation in the correlation between reactive oxygen metabolites (ROMs) and antioxidant capacity (OXY test).**  
 990 Mode and 95% credibility interval of the posterior distribution of the coefficients of correlation between ROM concentration and antioxidant  
 991 capacity, in nestling-feeding males and females from control groups and in incubating females before the start of the treatments. The number of  
 992 individuals is given in parentheses below the sample sizes when the samples covered multiple years, and thus some individuals were sampled  
 993 more than once. When 10 or more individual birds were measured repeatedly, the within-individual correlation (residual correlation) is reported  
 994 separately from the between-individual correlation.

Sex and stage	Years	N	DIC	Between-individual	Within-individual	Total phenotypic
F (incubating)	2012-2014	211 (199)		-0.101 [-0.822; 0.691]	0.050 [-0.175; 0.298]	0.049 [-0.090; 0.190]
F + M (feeding)	2012-2014	307 (274)	<b>1646.3</b>	0.042 [-0.637; 0.482]	0.137 [-0.066; 0.320]	0.104 [-0.019; 0.200]
F + M (feeding)	2012-2014	307 (274)	<b>1620.1</b>	-0.114 [-0.585; 0.549]	0.087 [-0.277; 0.445] in 2012	
					0.114 [-0.171; 0.373] in 2013	
					0.262 [-0.083; 0.545] in 2014	
F + M (feeding)	2012	72		-	-	0.064 [-0.180; 0.282]
F + M (feeding)	2013	124		-	-	0.063 [-0.096; 0.251]
F + M (feeding)	2014	111		-	-	0.132 [-0.028; 0.325]

995

996

997 **Table 5: Previous studies on the correlation between antioxidant capacity measured through**

998 **the OXY test and reactive oxygen metabolites.** The correlation coefficient was not available

999 in some studies. Bold values are significantly different from zero.

Species	<i>r</i>	<i>P</i>	References
Birds			
Adelie penguins <i>Pygoscelis adeliae</i>	<b>-0.463</b>	<b>0.005</b>	(Beaulieu et al. 2010)
greenfinches <i>Carduelis chloris</i>	-	0.22	(Herborn et al. 2011)
Seychelles warblers <i>Acrocephalus sechellensis</i>	<b>0.25</b>	<b>&lt; 0.001</b>	(van de Crommenacker et al. 2011)
	-	0.40	(van de Crommenacker et al. 2012)
blue tits <i>Cyanistes caeruleus</i>	-	0.34	(Arnold et al. 2015)
great tits <i>Parus major</i>	0.16	0.08	(Wegmann et al. 2015b)
	<b>0.50</b>	<b>&lt; 0.01</b>	(Vaugoyeau et al. 2015)
European starlings <i>Sturnus vulgaris</i>	<b>0.68</b>	<b>&lt; 0.05</b>	(Fowler et al. 2018)
Mammals			
domestic goats <i>Capra aegagrus</i>	-	n.s.	(Celi et al. 2010)

1000

1001 **Appendix 1: Correlation between markers of oxidative balance and nutritional state in the**  
1002 **plasma.**

1003 In 2014, the concentrations of triglycerides, glucose and lactate were measured in whole blood  
1004 immediately after blood taking using a portable test-strips reader designed for point-of-care  
1005 measures in humans (Accutrend, Roche Diagnostics), whereas antioxidant capacity and ROM  
1006 concentrations were measured through the OXY and d-ROMs tests, following the protocol  
1007 described in the main text. Individuals were only measured once. The quantity of blood  
1008 deposited on the test-strip was 10 $\mu$ L for triglycerides and glucose and 15 $\mu$ L for lactate. ROM  
1009 concentration were not significantly correlated with triglycerides (Spearman's rank correlation  
1010 test:  $\rho = -0.01$ ,  $N = 76$ ,  $S = 74136$ ,  $P = 0.91$ ), lactate ( $\rho = 0.18$ ,  $N = 19$ ,  $S = 937$ ,  $P = 0.47$ ), or glucose  
1011 concentration ( $\rho = -0.37$ ,  $N = 20$ ,  $S = 1817$ ,  $P = 0.11$ ). There was no correlation between the total  
1012 antioxidant capacity of the plasma and triglycerides ( $\rho = -0.16$ ,  $N = 93$ ,  $S = 155677$ ,  $P = 0.12$ ),  
1013 lactate ( $\rho = 0.30$ ,  $N = 21$ ,  $S = 1072$ ,  $P = 0.18$ ) or glucose concentrations ( $\rho = -0.09$ ,  $N = 24$ ,  $S =$   
1014  $2510$ ,  $P = 0.67$ ) either.

1015