



**HAL**  
open science

# Who was buried there? Multi-disciplinary approach on Early Bronze Age people in South of France

Mélie Le Roy, Gwenaëlle Goude

► **To cite this version:**

Mélie Le Roy, Gwenaëlle Goude. Who was buried there? Multi-disciplinary approach on Early Bronze Age people in South of France. GMPCA 2019, May 2019, Montreal, Canada. hal-02137290

**HAL Id: hal-02137290**

**<https://hal.science/hal-02137290>**

Submitted on 22 May 2019

**HAL** is a multi-disciplinary open access archive for the deposit and dissemination of scientific research documents, whether they are published or not. The documents may come from teaching and research institutions in France or abroad, or from public or private research centers.

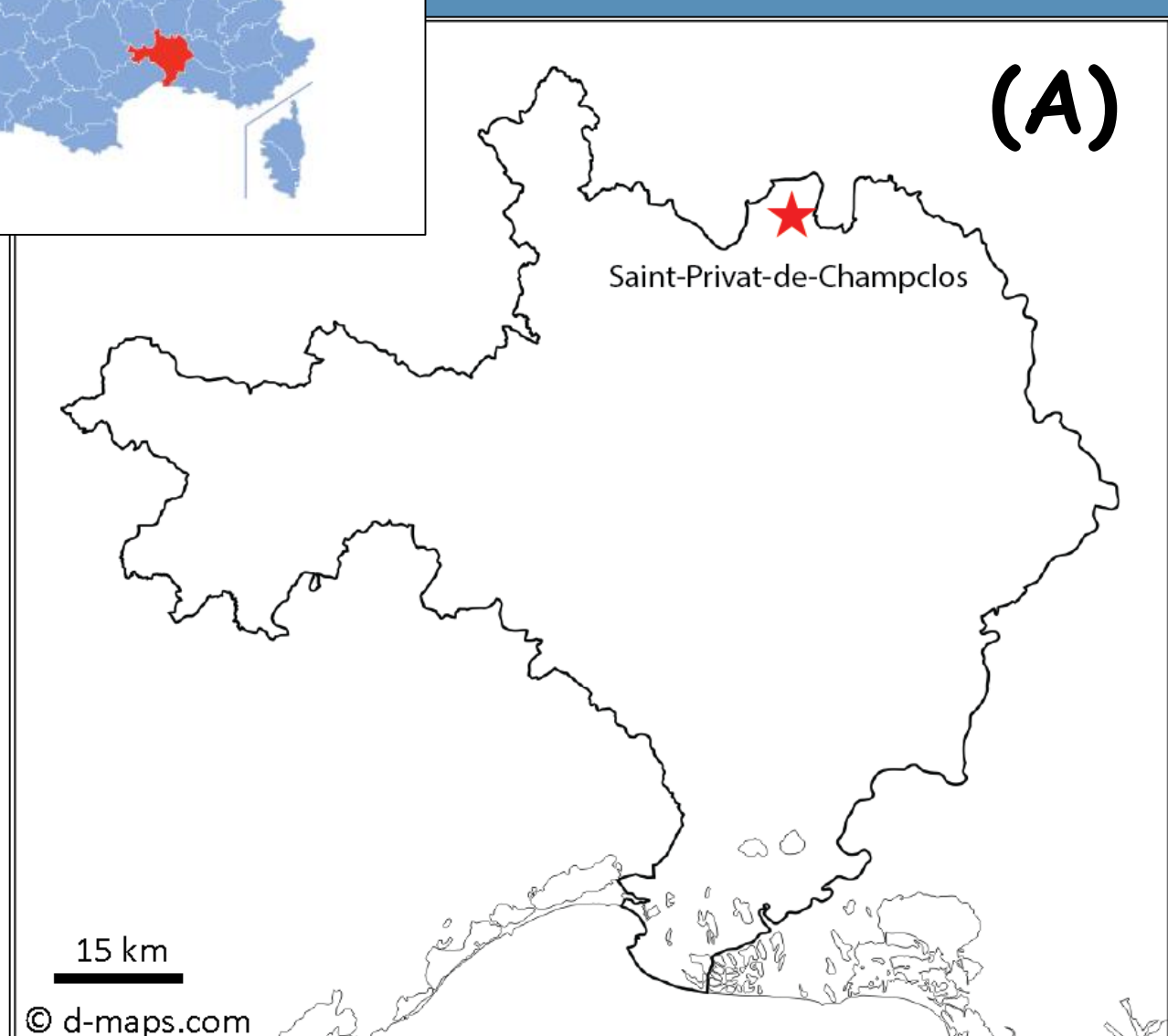
L'archive ouverte pluridisciplinaire **HAL**, est destinée au dépôt et à la diffusion de documents scientifiques de niveau recherche, publiés ou non, émanant des établissements d'enseignement et de recherche français ou étrangers, des laboratoires publics ou privés.

# Who was buried there?

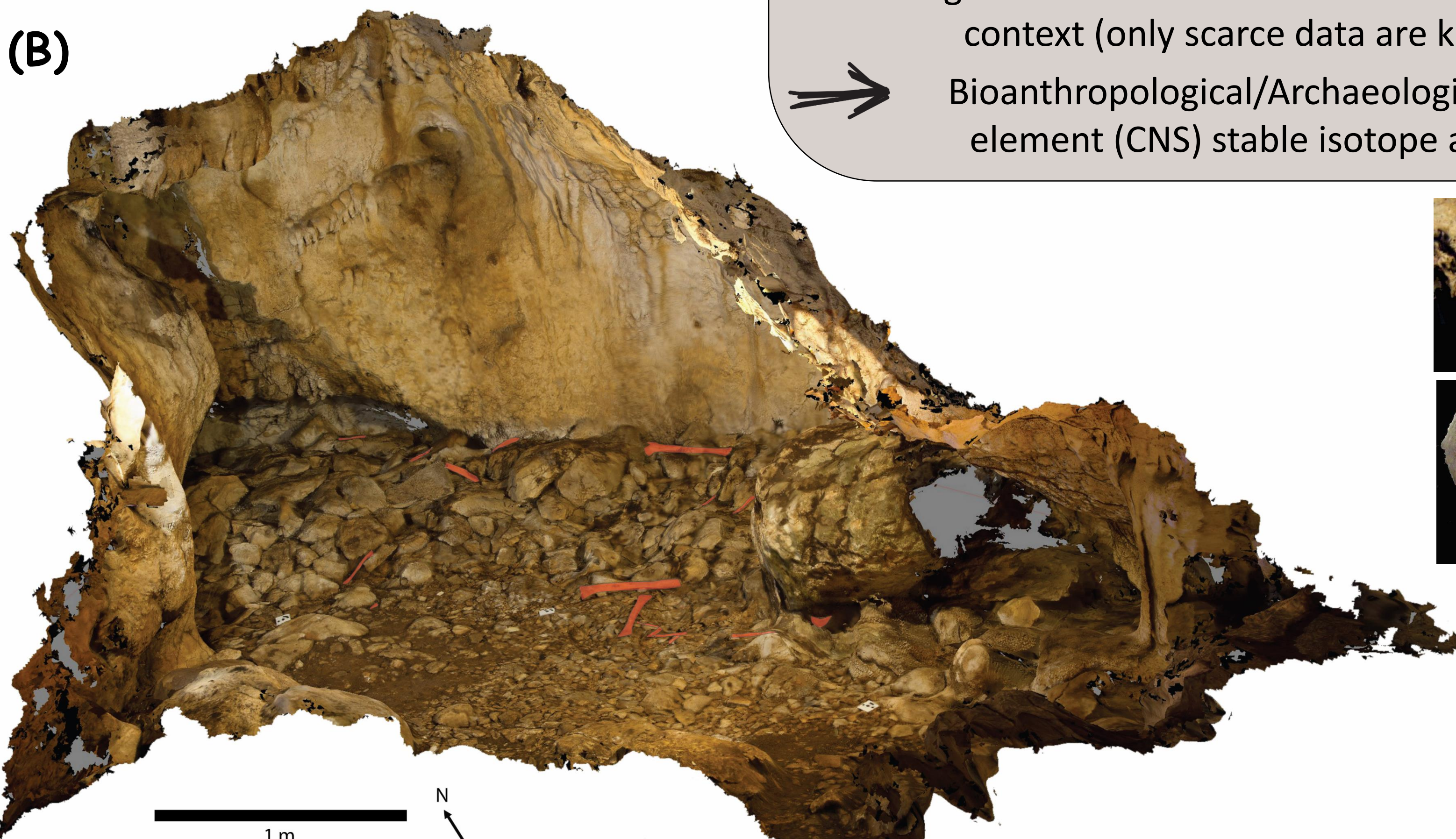
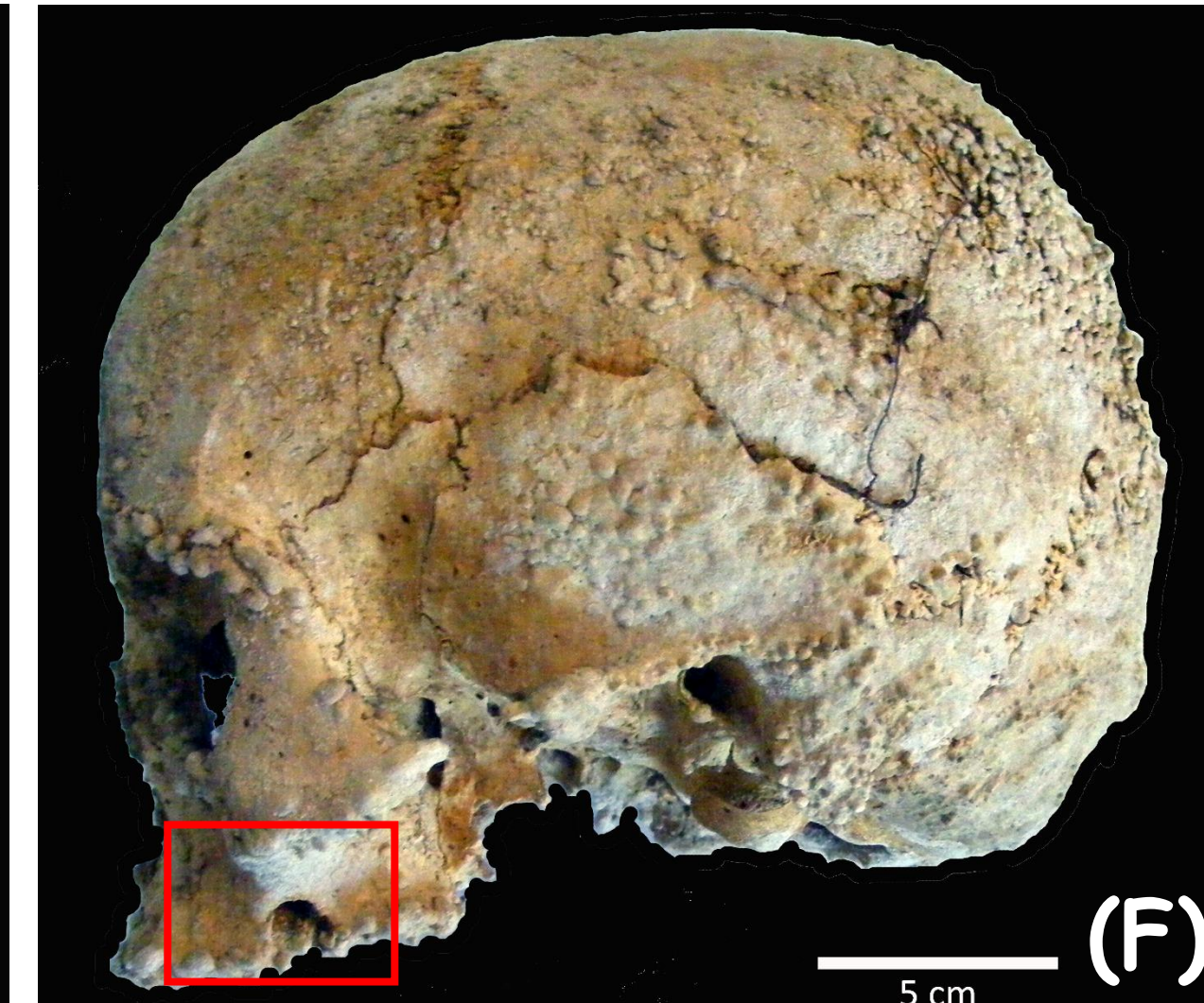
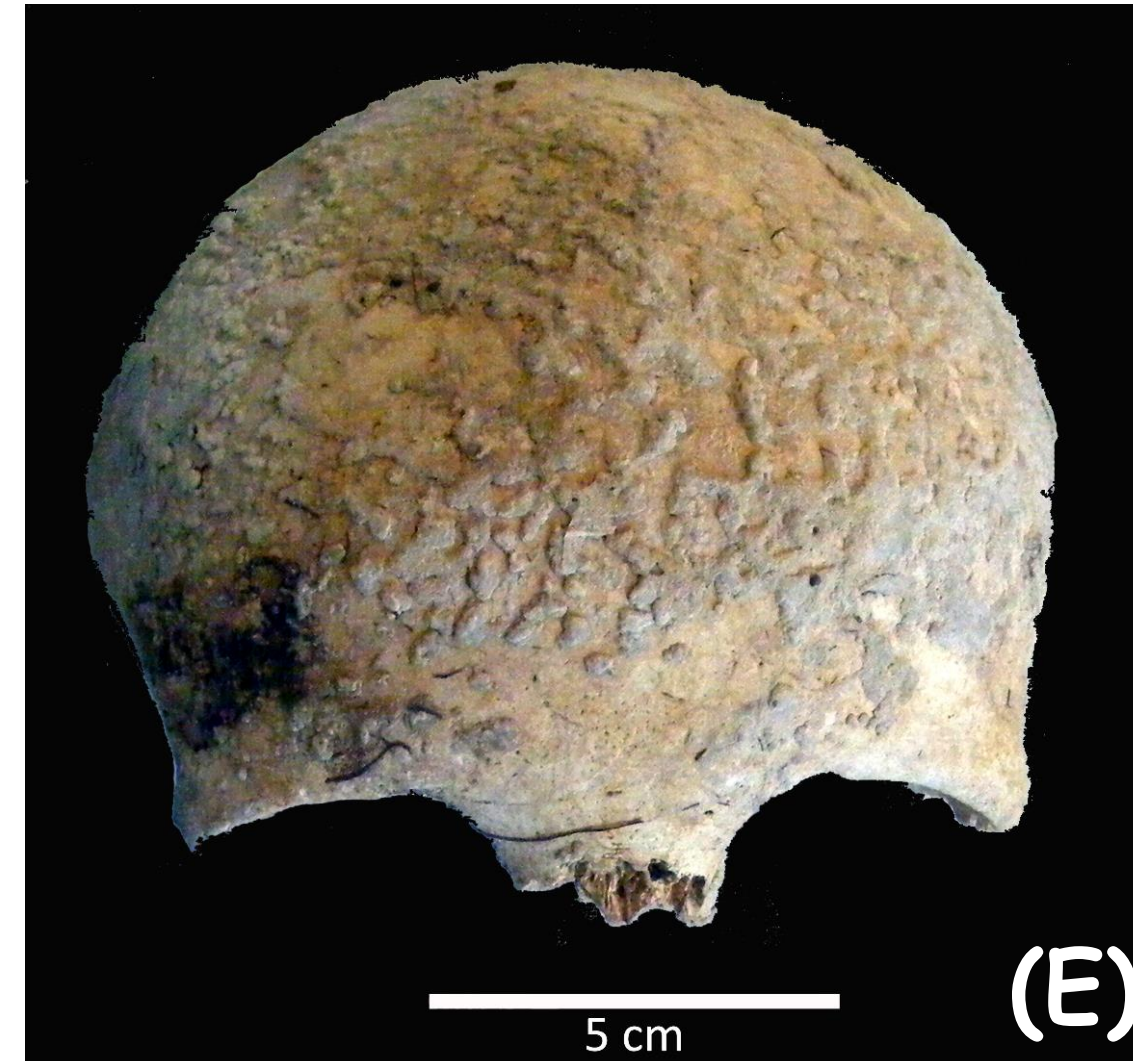
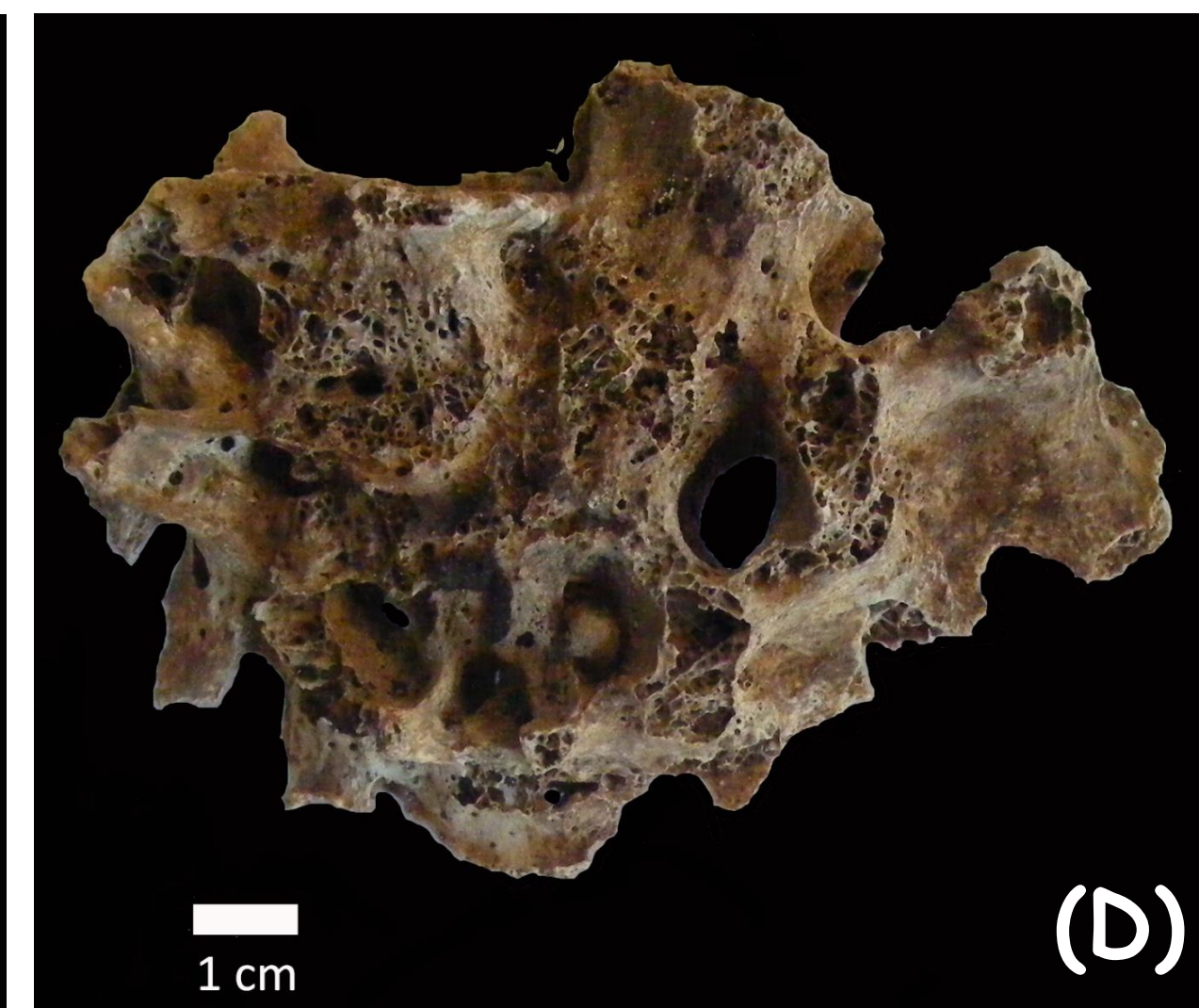
## Multi-disciplinary approach on Early Bronze Age people in South of France

Mélie Le Roy and Gwenaëlle Goude

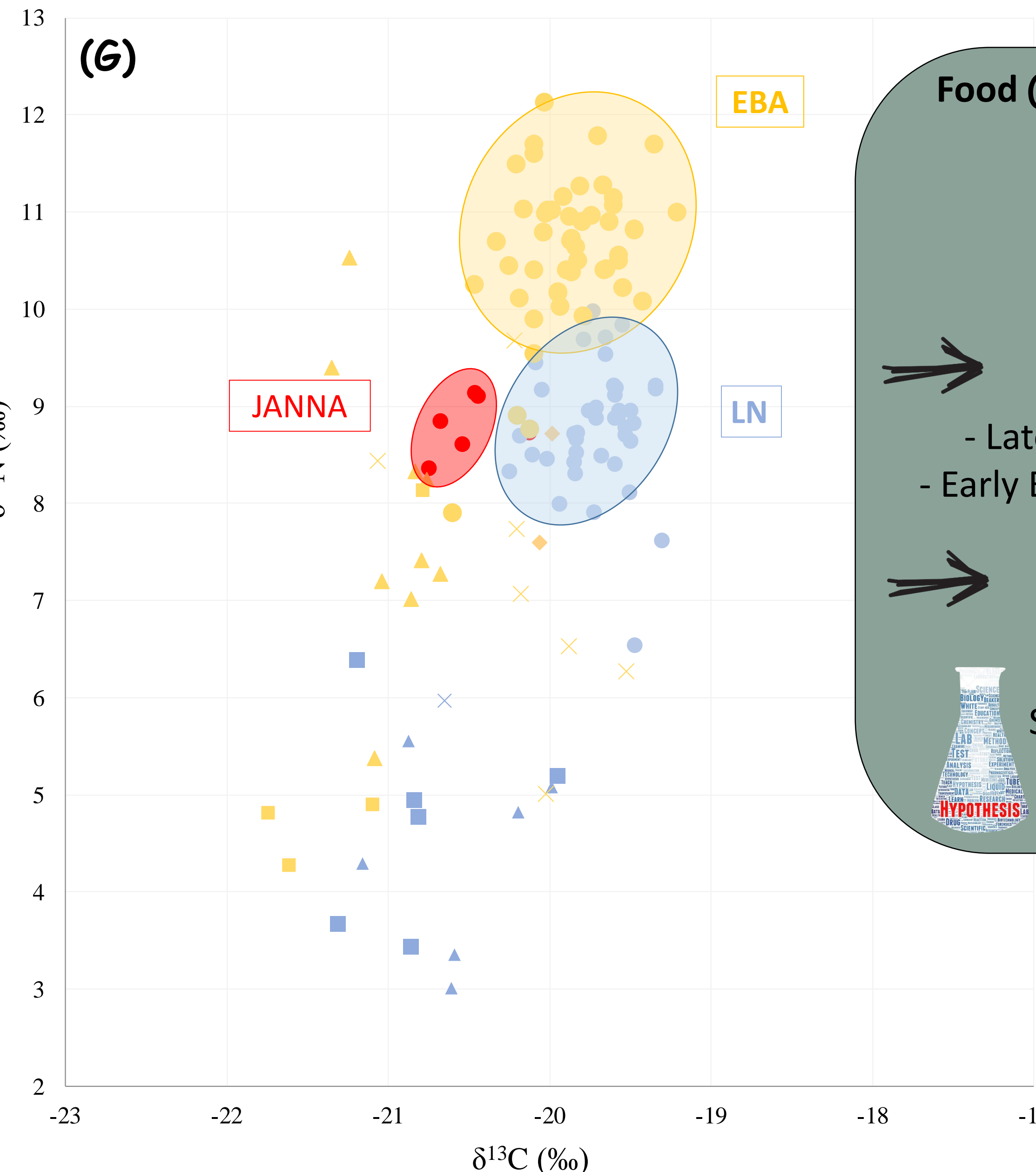
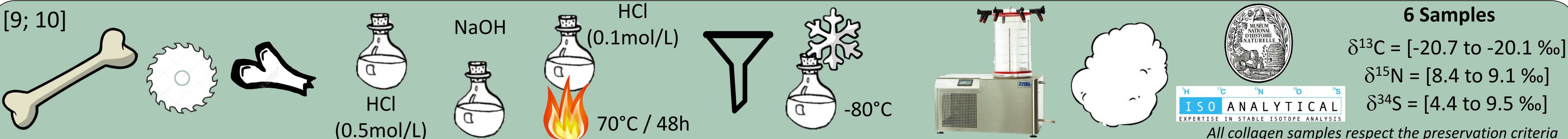
melieleroy@hotmail.fr and goude@mmsu.univ-aix.fr



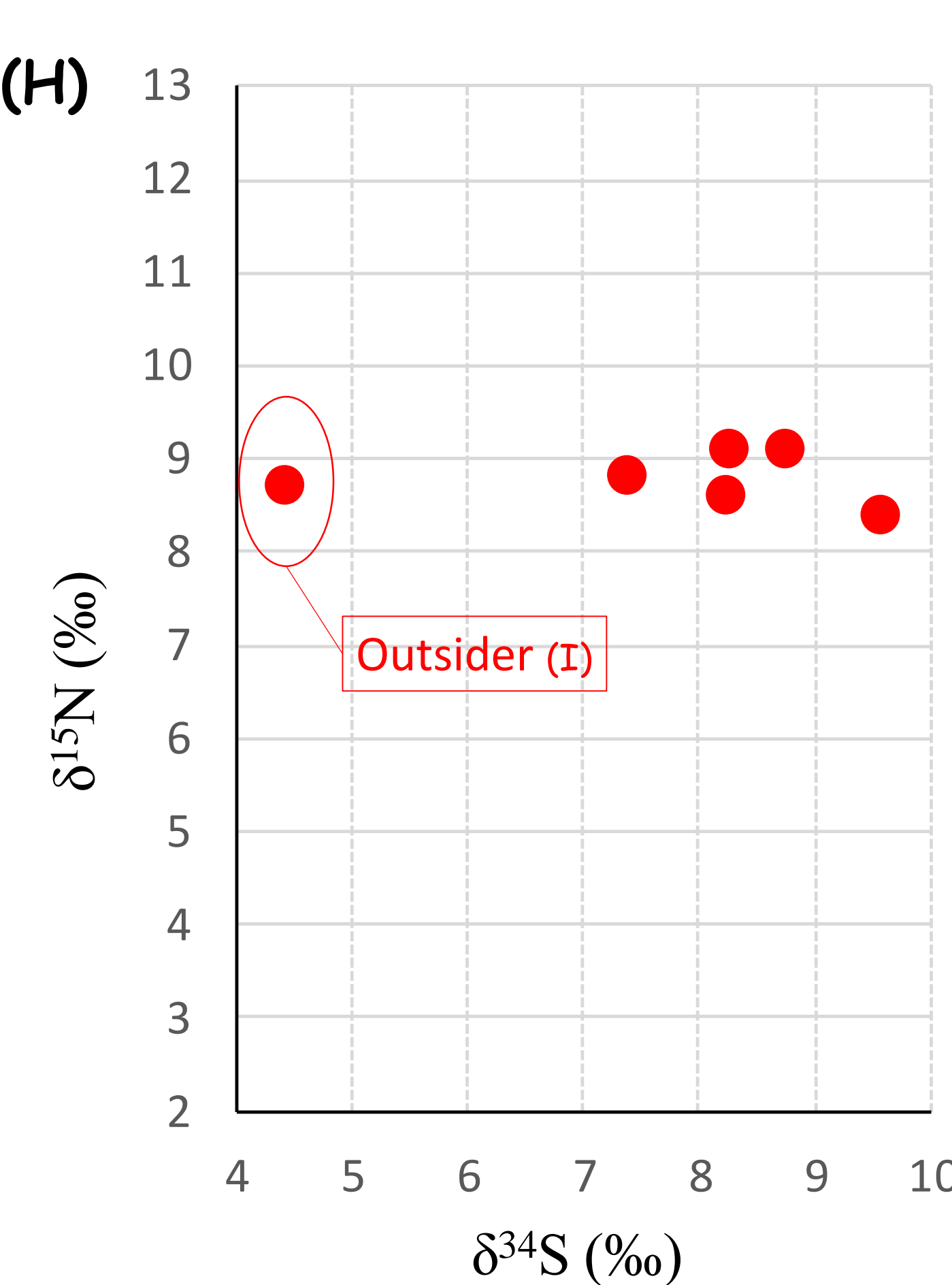
**Cèze Valley (Gard) (A)**  
 Homogenous funerary practice:  
 small collective burials (MNI between 3 & 15) in caves  
 between late Neolithic and early Bronze age [1]  
**Aven Janna : Sepulchral cave from  
 Early Bronze Age (B) [1877-1566 cal BCE]**  
**Origin and behaviour?**  
 Investigating population biology and economic  
 organisation in a successive chrono-cultural  
 context (only scarce data are known)  
 Bioanthropological/Archaeological/Multi  
 element (CNS) stable isotope analyses



**9 individuals** : 6 adults (2 ♀ [20-39]; [40-50] yrs; 1 ♂ & 1 unknown [>60] yrs) (C);  
 3 immatures ([0]; [4-6]; [9-14] yrs) [2; 3; 4]; Stature from 1,38m to 1,83m [5; 6].  
 Health status : Tuberculosis (Pott's disease) (D); Anemia (*Cribra Orbitalia*) (E);  
 Dental abscess (F) [7]  
 Possible disturbed primary deposits (only 1 leg in anatomical connexion)  
 and rare grave goods [8]



**Food (G)**  
 Terrestrial food resources (plant, animal)  
 High homogeneity  
 No difference depending on the biological records  
 No direct comparison sample / animal data in progress  
 - Late Neolithic (LN) human and animal samples (Aveyron: 150km) [11]  
 - Early Bronze Age (EBA) human and animal samples (Auvergne: 100km) [12]  
 Wide variability (C,N) between regions and periods  
 Number of individuals vs environment?  
 Sample too small (NMI=6) to define the whole diversity of resources | Differences in local resources



**Mobility (H)**  
 All from the same origin  
 Except one adult [>20] (I)  
 Small cranium (1253 cm<sup>3</sup>): stature vs pathology; sex? [13]  
 Known pattern for EBA northern Italian caves: possible "hospice center" [14; 15]  
 Patrilocal system [16]

