



HAL
open science

Who was buried there? Multi-disciplinary approach on Early Bronze Age people in South of France

Mélie Le Roy, Gwenaëlle Goude

► **To cite this version:**

Mélie Le Roy, Gwenaëlle Goude. Who was buried there? Multi-disciplinary approach on Early Bronze Age people in South of France. GMPCA 2019, May 2019, Montreal, Canada. hal-02137290

HAL Id: hal-02137290

<https://hal.science/hal-02137290>

Submitted on 22 May 2019

HAL is a multi-disciplinary open access archive for the deposit and dissemination of scientific research documents, whether they are published or not. The documents may come from teaching and research institutions in France or abroad, or from public or private research centers.

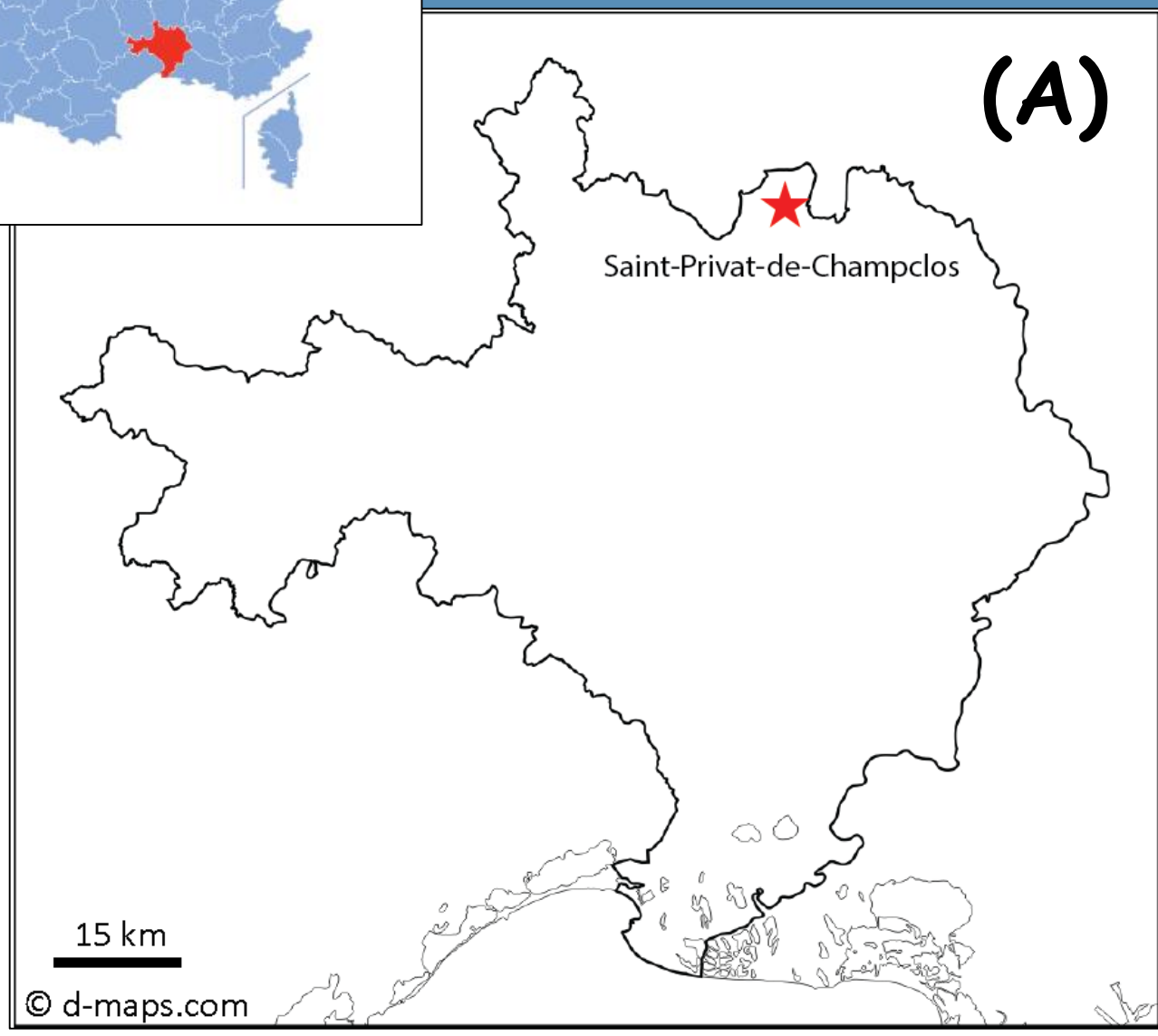
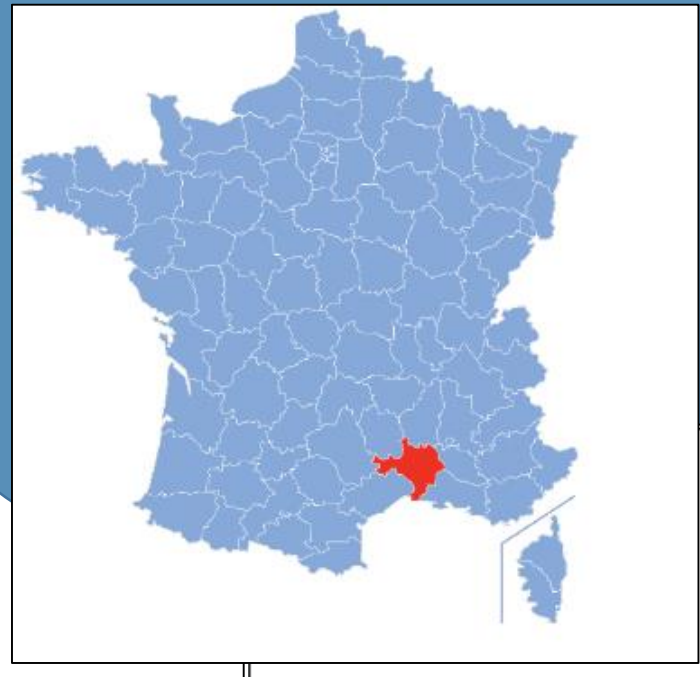
L'archive ouverte pluridisciplinaire **HAL**, est destinée au dépôt et à la diffusion de documents scientifiques de niveau recherche, publiés ou non, émanant des établissements d'enseignement et de recherche français ou étrangers, des laboratoires publics ou privés.

Who was buried there?

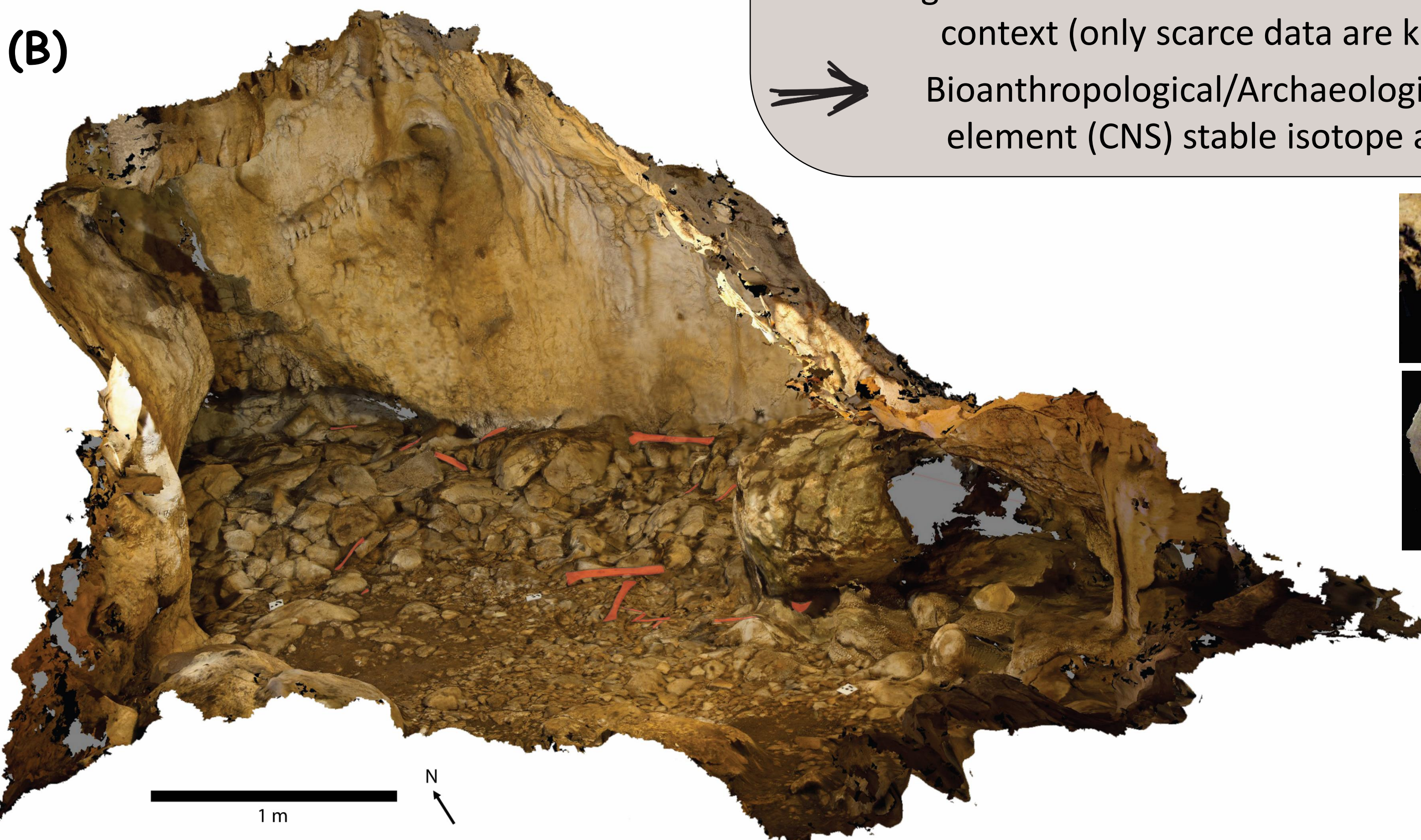
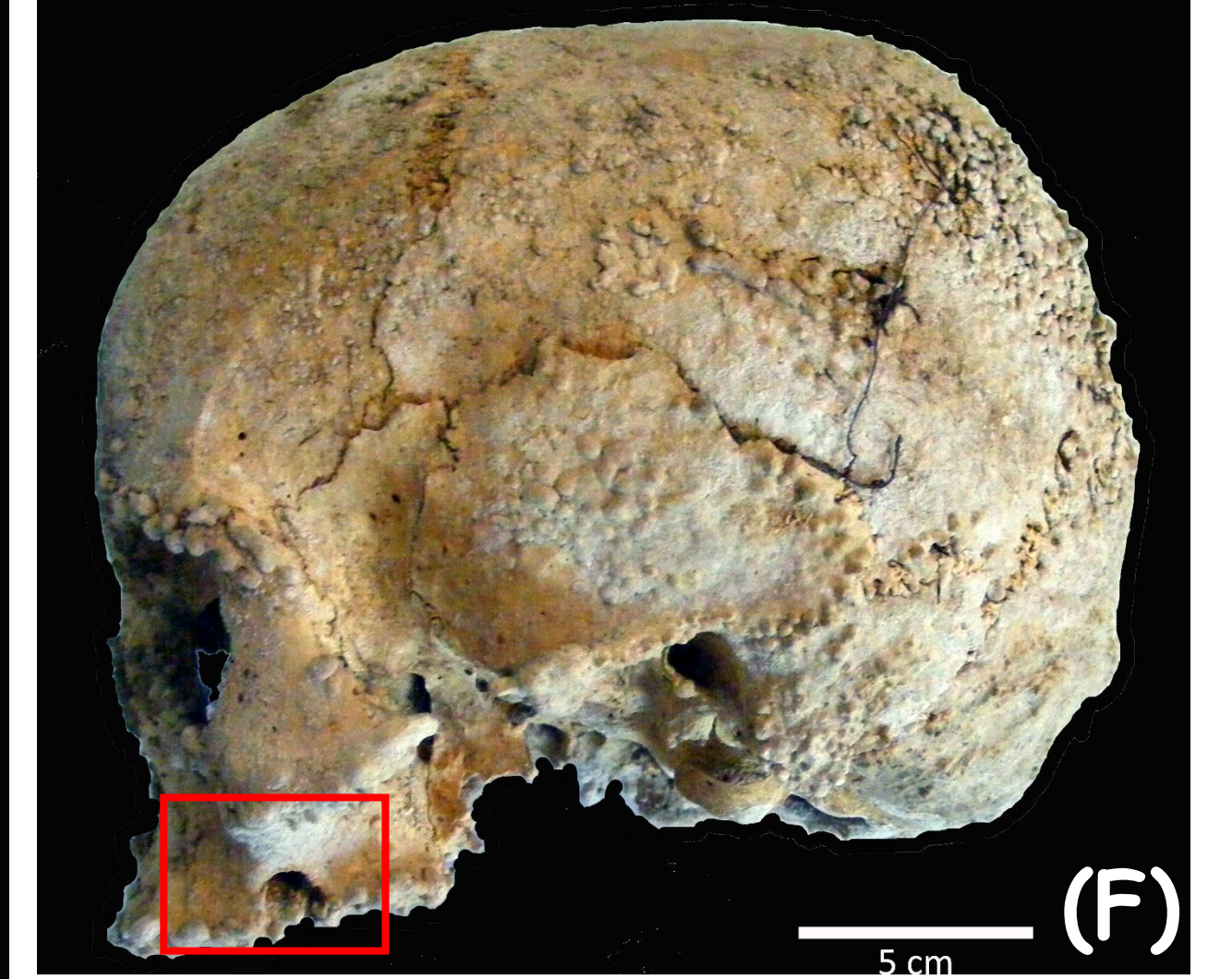
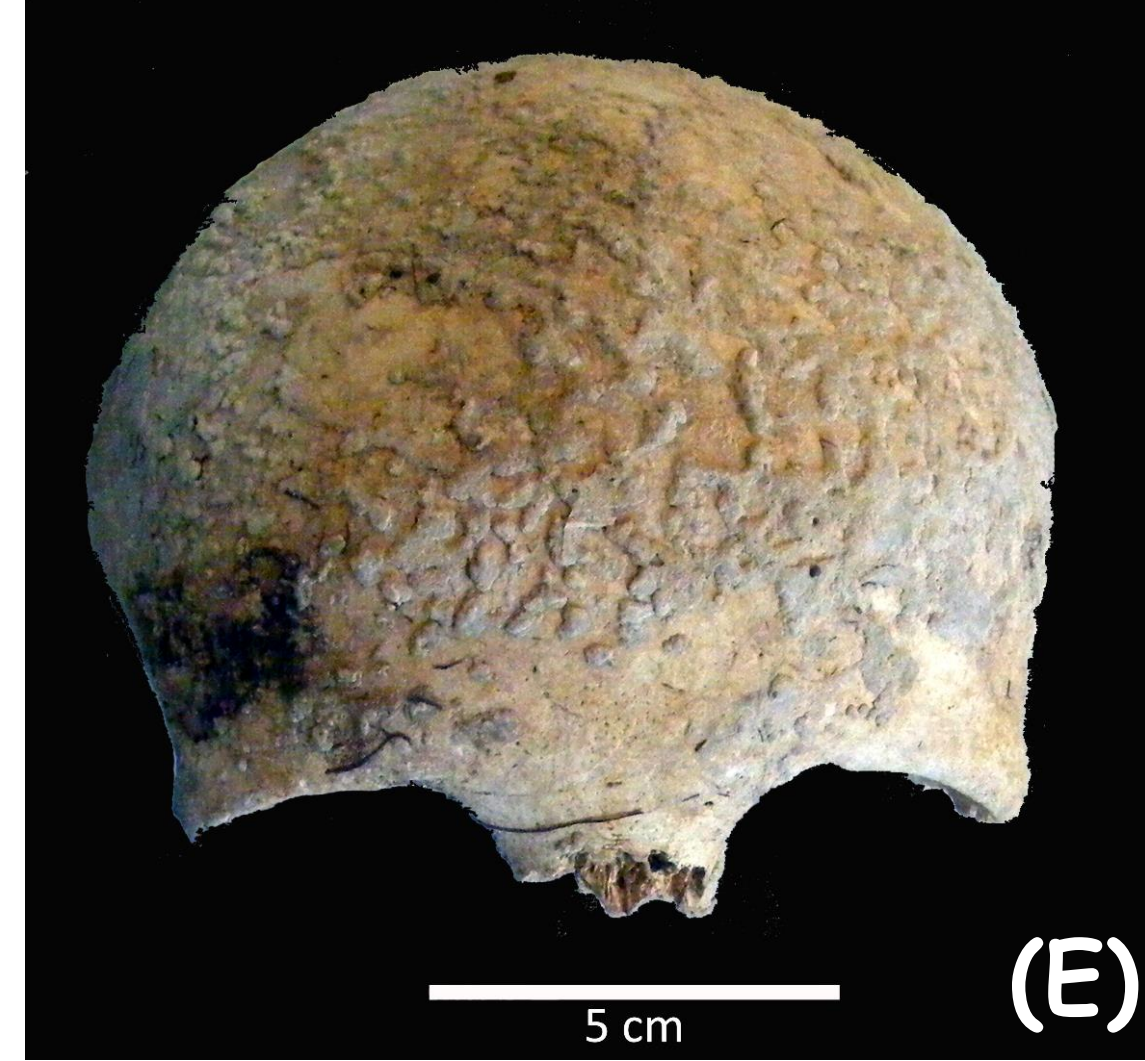
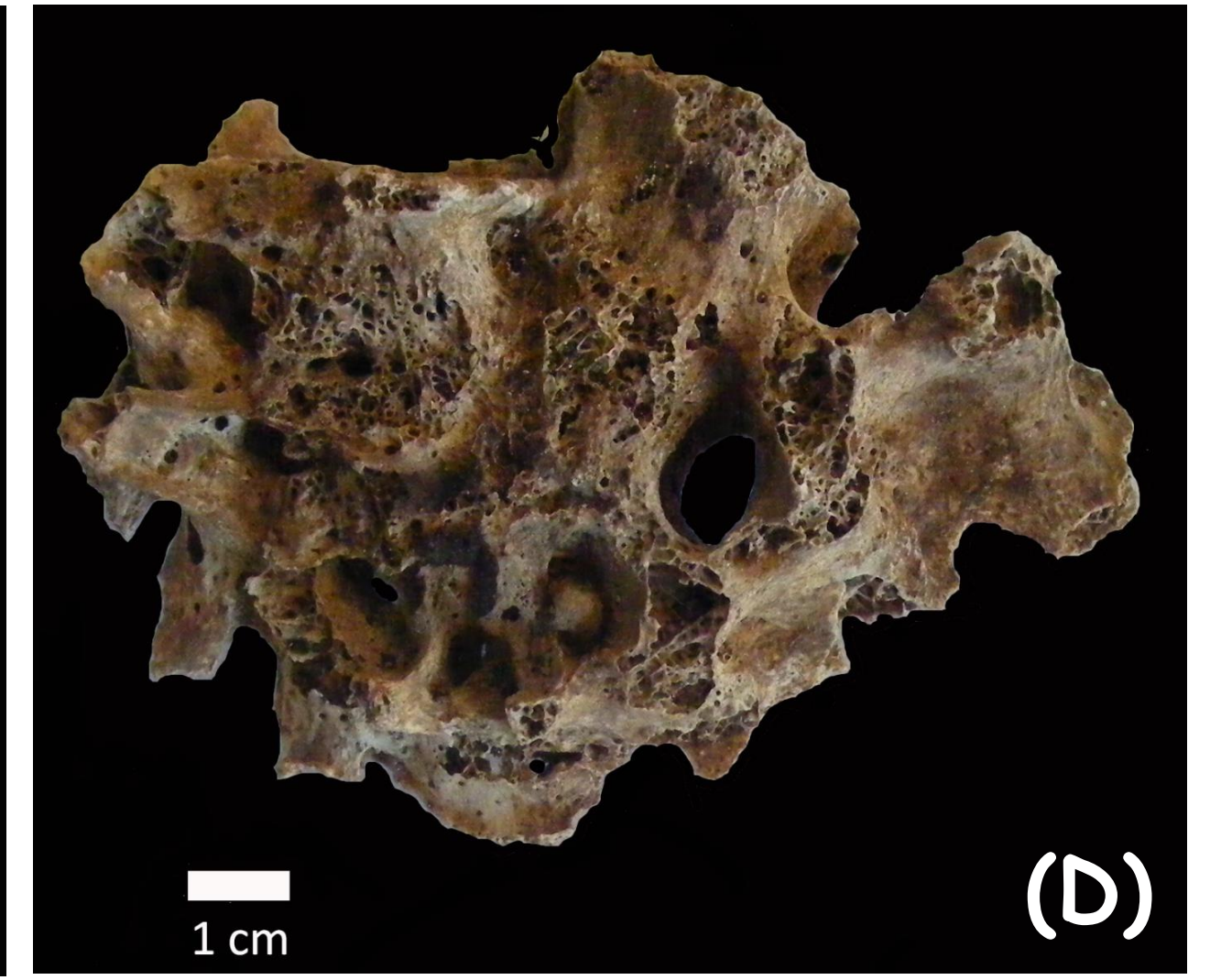
Multi-disciplinary approach on Early Bronze Age people in South of France

Mélie Le Roy and Gwenaëlle Goude

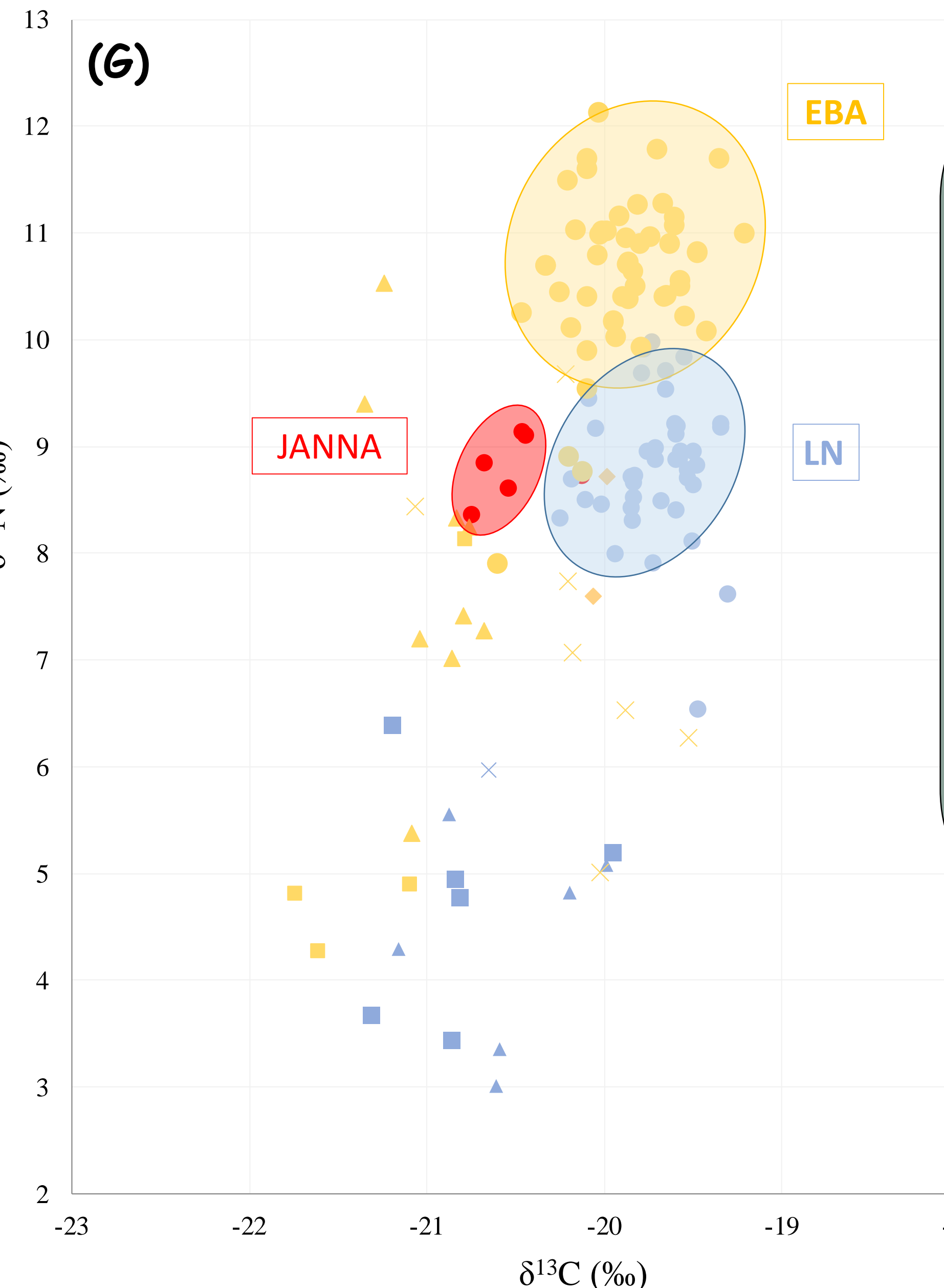
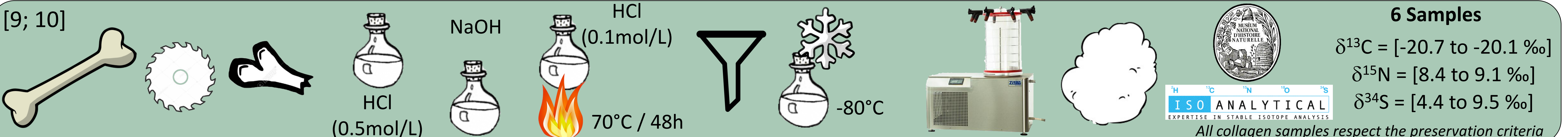
melieleroy@hotmail.fr and goude@mms.h.univ-aix.fr



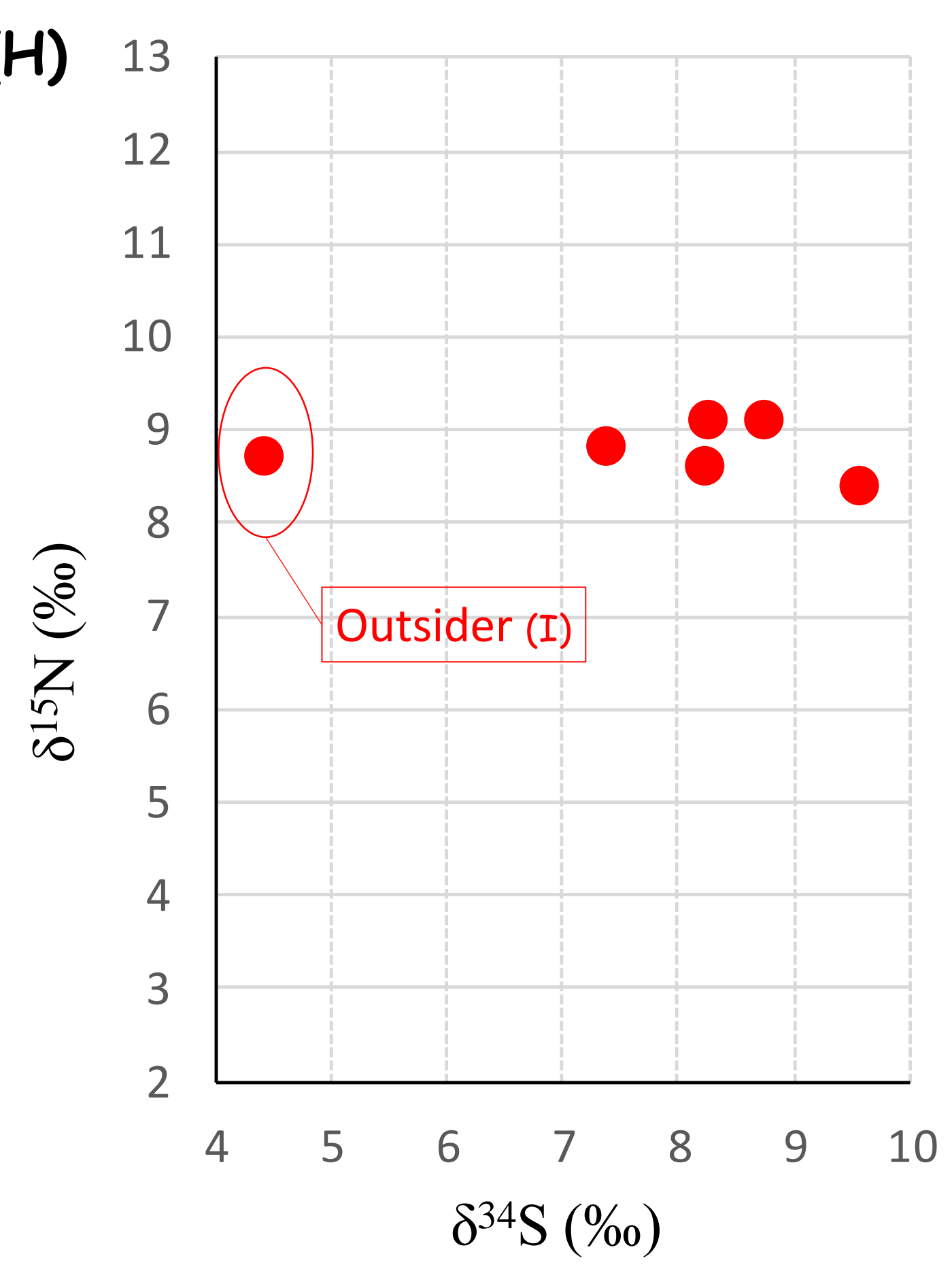
Cèze Valley (Gard) (A)
 Homogenous funerary practice:
 small collective burials (MNI between 3 & 15) in caves
 between late Neolithic and early Bronze age [1]
**Aven Janna : Sepulchral cave from
 Early Bronze Age (B) [1877-1566 cal BCE]**
Origin and behaviour?
 Investigating population biology and economic
 organisation in a successive chrono-cultural
 context (only scarce data are known)
 Bioanthropological/Archaeological/Multi
 element (CNS) stable isotope analyses



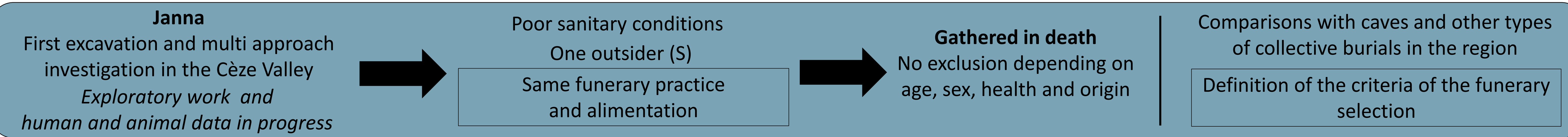
9 individuals : 6 adults (2 ♀ [20-39]; [40-50] yrs; 1 ♂ & 1 unknown [>60] yrs) (C);
 3 immatures ([0]; [4-6]; [9-14] yrs) [2; 3; 4]; Stature from 1,38m to 1,83m [5; 6].
 Health status : Tuberculosis (Pott's disease) (D); Anemia (*Cribra Orbitalia*) (E);
 Dental abscess (F) [7]
 Possible disturbed primary deposits (only 1 leg in anatomical connexion)
 and rare grave goods [8]



Food (G)
 Terrestrial food resources (plant, animal)
 High homogeneity
 No difference depending on the biological records
 No direct comparison sample / animal data in progress
 - Late Neolithic (LN) human and animal samples (Aveyron: 150km) [11]
 - Early Bronze Age (EBA) human and animal samples (Auvergne: 100km) [12]
 Wide variability (C,N) between regions and periods
 Number of individuals vs environment?
 Sample too small (NMI=6) to define the whole diversity of resources
 Differences in local resources



Mobility (H)
 All from the same origin
 Except one adult [>20] (I)
 Small cranium (1253 cm³): stature vs pathology; sex? [13]
 Known pattern for EBA northern Italian caves: possible "hospice center" [14; 15]
 Patrilocal system [16]



Acknowledgements: Excavations and stable isotopes analysis were funded by the French Minister of Culture; This work has been produced within the framework of the Unit of Excellence LabexMed - Social Sciences and Humanities at the heart of multidisciplinary research for the Mediterranean - which holds the following reference 10-LABX-0090. The authors would like to thank the MNHN lab team and especially Dr M. Balasse for the rapidity of sample analysis.
Photo credits: M. Le Roy; **Author affiliations:** M. Le Roy Aix Marseille Univ - LabexMed, CNRS, Minist Culture, LAMPEA, Aix-en-Provence, France; G. Goude Aix Marseille Univ, CNRS, Minist Culture, LAMPEA, Aix-en-Provence, France