



HAL
open science

Towards Visual Explorations of Forums' Collective Dynamics in Learning Management Systems

Malik Koné, Madeth May, Sébastien Iksal, Souleymane Oumtanaga

► **To cite this version:**

Malik Koné, Madeth May, Sébastien Iksal, Souleymane Oumtanaga. Towards Visual Explorations of Forums' Collective Dynamics in Learning Management Systems. CSEDU 2019: 11th International Conference on Computer Supported Education, May 2019, Heraklion, Greece. pp.67-78. hal-02137166

HAL Id: hal-02137166

<https://hal.science/hal-02137166v1>

Submitted on 29 May 2019

HAL is a multi-disciplinary open access archive for the deposit and dissemination of scientific research documents, whether they are published or not. The documents may come from teaching and research institutions in France or abroad, or from public or private research centers.

L'archive ouverte pluridisciplinaire **HAL**, est destinée au dépôt et à la diffusion de documents scientifiques de niveau recherche, publiés ou non, émanant des établissements d'enseignement et de recherche français ou étrangers, des laboratoires publics ou privés.

Towards Visual Explorations of Forums' Collective Dynamics in Learning Management Systems

Malik Koné^{1,2}, Madeth May¹, Sébastien Iksal¹, Souleymane Oumtanaga²

¹*LIUM, Le Mans Université, Le Mans, France*

²*LARIT, INP-HB, Yamoussoukro, Côte d'Ivoire*

{malik.kone, madeth.may, sebastien.iksal}@univ-lemans.fr

Keywords: Visualization, Forum, Social Network, Learning Analytics

Abstract: Discussion and exchange among peers have being hailed as an essential part of learning since at least, Vygotsky's socio-constructivist theory. There, learning is presented as a subtle and dynamical collective process. Hence, despite numerous efforts to understand how learners engage and maintain inspiring discussions, researchers continue to question how to effectively reinforce the collective actions. In Learning Management Systems (LMSs) they propose Learning Dashboards (LDBs) to learners, tutors, and managers to help them monitor various learning indicators. But only recently have they employed Natural Language Processings (NLPs) and Social Network Analysis (SNA) techniques to display temporal indicators incorporating the forums' content analysis and the learners' behavioral patterns. In this study, we present our design efforts to model a scalable and portable indicator of collective actions. We aim to support tutors' monitoring of forums' activities through explorable visualizations. We review previous researches about visual explorations of Forums' content and online collaboration's measures. We expose in progress visualizations built from three different datasets and propose directions towards further development of indicators to monitor collective actions.

1 Introduction

Modern online learning environments often rely on forums and chats for their students to exchange information about a subject, get help from peers and tutors or socialize. When attendance is massive –as currently in popular Massive Open Online Courses (MOOCs)–, or if the course session spread over a long period of time, the forums' messages rapidly become intractable. Therefore, the mass of information is devalued and can even be a burden on the learners and tutors as the former struggle to find adequate peers to support learning collectively and the latter are overwhelmed by numbers.

Efforts have been made to help tutors analyze the students' exchanges in forums but, as we will see in section 3, these analyses are often limited to a small set of individuals or are topic specific. Also, the analysis usually takes place at the end of the learning session and does not allow “real-time” guidance.

Meanwhile, interactions taking place in forums account for essential aspects of the socio-constructivist learning theory. Vygotsky emphasizes the importance of discussions as they take learners

at the fringe of their knowledge domain, the proximal development zone. There, they push back their knowledge barrier and build new knowledge to fill the gaps spotted during discussions. Therefore, facilitating forums' usages in ways that encourage discussions and collective actions should theoretically be beneficial to the learning experience of all actors. But as far as we know, there is yet no method to come up with a generic and dynamic way to explore the social interactions taking place in Learning Management System (LMS). Learners often struggle to build a sense of belonging (Khalil and Ebner, 2014) and tutors have difficulties supporting effective collective actions (Zheng et al., 2015).

Well-designed learning dashboard could help support collective actions by enabling the exploration of the forums' interactions. They would offer the possibility for the tutor and administrator to better understand how students and discussed topics evolve, as well as facilitate the curriculum design improvements. Learning Dashboards (LDBs) could also help learners develop reflexive competencies and increase their engagement.

In this paper, we report our first step towards facil-

itating collective activities with tools supporting the tutor in their visual exploration of the Virtual University of Côte d’Ivoire (VUCI)’s forums. In the next section, we define collective dynamic and explain why we see it differently from collaboration. Then, in section 3, we recall previous efforts made to monitor collective actions and use LDBs as support tools. In section 4, we present our model and propose a way to come up with an interactive visualization (or explorable) of the forum’s collective dynamic. We illustrate it, in the 5th section with our firsts visualizations built from different datasets that we will have detailed in the preceding section. Finally, we discuss our visualizations’ limitations and future developments in section 6.

2 Visualization of collective dynamics in LMSs

The first clarification we make is between visualization and Learning Dashboard (LDB). A Learning Dashboard is a “single display that aggregates different indicators about the learner learning process and/or learning context into one or multiple visualizations” (Schwendimann et al., 2017). We will use the term visualization when the LDB can be made of single visualization and keep the term LDB when it incorporates clearly several visualizations. We will consider discussions taking place in LMSs or in other online applications if they are used in an educational context. We understand that LMSs are applications designed with the intention of being teaching tools, but sometimes we may refer to Google Hangouts as a LMS too. If so, it is because we consider the specific Hangouts chat from the G Suite for Education which was built with the intent to support teaching and learning.

We collected 7 datasets from Coursera, Hangouts, and Moodle. The datasets are different in size and quality. Table 1 and Section 4 further details the means of collection, the datasets specificities.

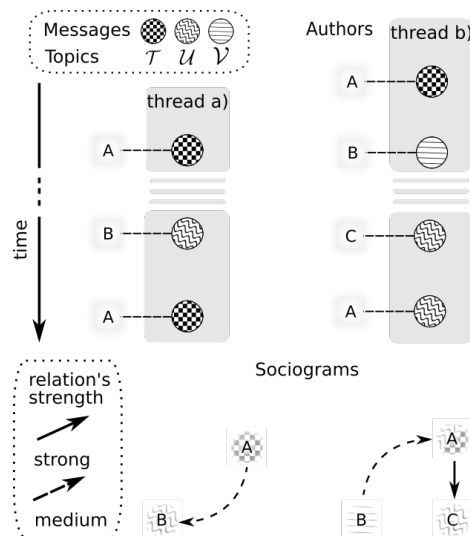
2.1 Actions in forums

We make an important distinction between collaborative actions and collective actions. Dillenbourg (1999) define collaboration as a coordinated synchronous activity born from the persistent will to share a common perception of a problem originating from people with similar social roles. Taken as a bottom-up process with the coordination coming up from the actors themselves, collaboration is difficult

to automatically analyze. It implies that to coordinate, each actor evaluates the intentions of others and, doing so, each instantiates a theory of mind (Gershenberg and Tenenbaum, 2017) that would be very challenging to implement artificially. Therefore we use the term “collective action” instead of “collaboration” to emphasize the fact that we do not assume a shared intention or shared goal in the actors’ interactions. We focus on a set of observable actions and leave the deduction of the interaction’s intent to the observer. Nevertheless, we use the expression “collective action” instead of the more generic “social interaction” to bear in mind that from the observer point of view, the studied interactions have a shared goal. This is not true for all social interactions. So, to wrap up, in a collaborative interaction the shared goal can be made explicit by the actors, in a collective interaction, it is subjective to the observer, and in social interactions, it may not exist at all.

The elementary actions we are most concerned with are those taking place in forum and chats of LMSs. In general, they are publications and messages’ comments, but messages’ up and down votes, publication times are significant and integrated into the model that we elaborate in section 4.

Figure 1: Illustration of how the strength of actors’ ties (or links) varies as a function of time and topic overlap. Thread a corresponds to actor-topic dynamic (1a) where B’s late post after A’s 1st publication does not correlate strongly enough to create the link from B to A. But A’s 2nd post is timely enough, although not exactly on the same topic as B’s message, to create the tie $A \dashrightarrow B$ drawn as a dashed arrow. In thread b, in addition to the tie $B \dashrightarrow A$, we have a topic overlap and time proximity between C and A. This makes a the strong tie $A \rightarrow C$.



Forums and Chat Depending on the LMS, different tools exist to facilitate discussions between peers. The main distinction is historical and separated asynchronous tools, forums, from synchronous aimed chats. Hence, forums' hierarchical structure is often more fine-grained than that of chats because their posts were always meant to be persistent. On the other hand, chats have better online awareness and presence indicators.

In this study, we consider that a forum is made of discussions and that each discussion is created from an initial message followed by other messages. This sequence of messages is what we call a discussion thread. A discussion may contain several threads if comments are allowed or if explicit references are made to previous publications. In that case, the new thread will contain the referenced messages up to the initial one and all subsequent comments. In chats, several interrelated threads may also appear in a unique discussion when one explicitly mentions a previous message.

Despite their historical differences, today, both forum and chat can be used for synchronous and asynchronous online discussions. One can subscribe to a forum's discussion and receive alerts as soon as a new message is published. And a history of posts is kept in modern chats, while the creation of several co-existing chats has been facilitated. Each chat is, then, equivalent to a forum discussion. Finally, both forums and chats display messages' timestamp and authors' information. So for simplicity, we will call indifferently "forum" any virtual discussion space in a LMS.

2.2 Collective Dynamics

Collective dynamics are time-dependent interactions spurring for the messages co-occurrence in the forums' discussions.

Actors' messages dynamics How do actors' messages spread over time? Let $(\tau_i)_{1,2,3}$ be three messages timestamp and A, B, C three actors. Collectively, the actors' messages could be distributed as A_1, B_2, C_3 , meaning that A, B and C respectively posted one message at timestamp τ_1, τ_2, τ_3 . But another dynamic could be that actor A , alone, published the three messages, thus A_1, A_2, A_3 ; or alternatively that A published a message at τ_1 and B at timestamp τ_2 and τ_3 , thus A_1, B_2, B_3 . These denote different dynamics for the actors' messages. Visualizing them helps to identify the users posting behavior and distinguishing learners' behavior, for example, active from lurkers.

Topics' messages dynamics How do messages spread over time and topics? Or how topics are covered by messages over time? Latent Dirichlet Allocation (LDA) based methods are commonly used Bayesian parametric methods to approximate a message's topic or topics mixture (Jelodar et al., 2017). To map each message to a point in topic space Φ we can also use other statistical non-parametric methods such as stochastic block model (Gerlach et al., 2018). The aim is to represent a message M in the topic space which can be, for example, the set of probability distributions over $\Phi = \mathcal{T} \times \mathcal{U} \times \mathcal{V}$ where a point $M = (.7, .1, .2)$ denotes that the message is made of topics \mathcal{T}, \mathcal{U} and \mathcal{V} respectively in proportions .7, .1 and .2. To simplify the next examples we suppose that each message maps to a unique topic. M from topic \mathcal{T} would be the point $(1, 0, 0)$.

A simple topic message dynamics example is $\mathcal{T}_1, \mathcal{T}_2, \mathcal{T}_3$, where all three messages are on the topic \mathcal{T} . At the opposite we could have $\mathcal{T}_1, \mathcal{U}_2, \mathcal{V}_3$ where each message maps respectively to topics \mathcal{T}, \mathcal{U} and \mathcal{V} .

This type of dynamic shows the evolution of the topics' popularity in the LMS, or the evolution of topics' interest over time.

Actor-topics' dynamics How do an actor's messages cover topics over time? Let $(A\mathcal{T})_i$ be the message with timestamp τ_i posted by actor A and on topic \mathcal{T} . The two threads in Figure 1 illustrate the following actor-topics dynamics:

$$(A\mathcal{T})_1, \dots, (B\mathcal{U})_8, (A\mathcal{T})_9 \quad (1a)$$

$$(A\mathcal{T})_1, (B\mathcal{V})_2, \dots, (C\mathcal{U})_8, (A\mathcal{U})_9 \quad (1b)$$

Where (1a) denotes that actor A published two messages both on topics \mathcal{T} , but the 2nd came after B 's message on topic \mathcal{U} that was published long after (\dots) A 's 1st message.

In (1b), B publishes a message on topic \mathcal{V} immediately after A 's message on \mathcal{T} . Then, after some time and other publications, A posts a message on yet a 3rd topic \mathcal{U} , similar to what C had just published on.

From the above observable dynamics, we can define two more dynamics: the actor-actor and topic-topic dynamics.

Actor-actor's dynamics The actor-actor's dynamics can be taken as the evolution of the actor's social network where the actors are linked by message closeness and past interactions. We suppose that messages posted on overlapping topics in the same discussion

by different actors potentially indicate some interactions between the authors. This may not always be the case.

Figure 1 exemplifies how the strength of messages correlation is made of, topic, temporal and actor closeness. What is not shown in this figure is that the strength of the tie may also depend on previous actors' interactions, that is the social network built from previous messages correlations. We will detail this in section 4 and explain how we avoid inferring causal interactions from the messages' correlations.

If a message is published shortly after another then their correlation should be strong. In example (1b), actors *A* and *C* would have a strong interaction because they published on the same topic *U* and their respective messages' timestamp are close. An interaction also exists between actors *A* and *B* but probably weaker because it is only based on the messages' timestamp and not the topic overlaps. The relationship between actors *B* and *C* would be even weaker if it existed at all. Their messages are far apart and not on the same topic.

So, from the message topic, time and actor correlations we build a directed graph representing the social network of messages exchanged between the LMS actors. The evolution of that network is what we call the actor-actor dynamic.

Topic-topics' dynamics This type of dynamic concerns the way the topic's correlations evolves over time. For example, if at the beginning of a course, topics \mathcal{T} and \mathcal{U} tend to be closely connected because students often mix them up in discussions, we hypothesize that as the course's concepts disambiguate, the relationship between the two topics will likely decrease because fewer students will publish messages mixing both topics in the same discussion.

As for the actor-actor dynamic, the topic-topic dynamic can be expressed as a temporal network (or temporal graph), but where nodes are topics and links between them represent relationships whose strength depend on a topic, time and actor' correlation. This can be seen as a message based distance.

In Figure 1a), some relation between \mathcal{T} and \mathcal{U} would occur for the same reason than that of $A \rightarrow B$. Incidentally, in the 2nd thread, we would have $\mathcal{V} \rightarrow \mathcal{T}$ based on time proximity, but also $\mathcal{U} \rightarrow \mathcal{T}$ based on the shared author *A*.

As we will explain in the literature review, the topic-topic network may be best suited for student targeted visualization than the actor-actor network.

Finally, let's recall that for us collective dynamic is the evolution of relationships between topics and actors spurring from the messages' co-occurrences in

a LMS's forum without making any assumption about the actors' intentions.

3 Related works

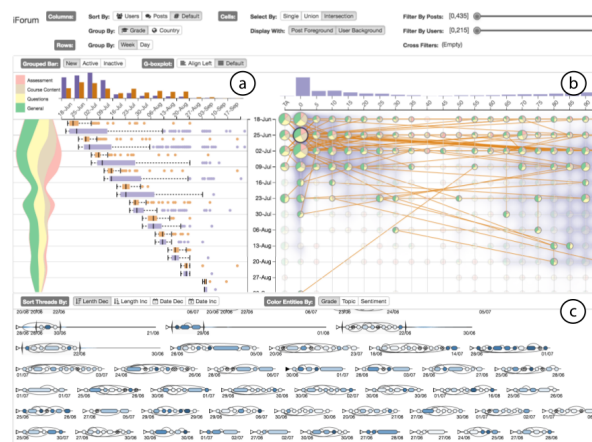
We review previous works pertaining to collective actions and those about supporting learning with visualizations.

3.1 Analyzing collective actions

Studies that consider collaboration usually try to identify the intentions by studying the student's behavior and message publications.

Detecting collective action In a 250 strong Community of Learning (COL), Rehm et al. (2015) compare on-task users, those showing engagement and high performance, with off-task users. They use questionnaires to relate the different behaviors to the users' hierarchical position in the COL. They compared the actors' social network position and their engagements in learning discussions. They found a positive correlation between social position and engagement, therefore the authors did not invalidate their hypothesis that the social position influenced the learning behavior. Social Network Analysis (SNA) techniques are also used to collect statistical measures from the social network of messages' exchange in order to automatically operationalize collaborative indicators. In (Lobo et al., 2016), for example, SNA is used to compute initiative, activity, regularity of activity, regularity of initiation, and reputation, that

Figure 2: iForum's Dashboard (Fu et al., 2017) showing (a) overall changes of post in the forum, (b) a thread representation, (c) discussions in packed forms.



permits identifying isolated learners and learners with potentially assistant roles.

Wang et al. (2016) are other researchers interested in the learning differences between off-topic and on-topic users. After a detailed analysis of forum messages, they demonstrate that on-topic users, that is high-order thinking users displaying constructive and interactive behaviors in the forums, have more learning gain than off-topic learners. In conclusion, the authors advocate for an off-topic discussion detector mechanism to guide users back on more constructive grounds.

In (Chua et al., 2017), the authors' approach is to study the turn-taking in discussions. They identify different types of conversation and categorize the users as: loner, replier, initiator without reply, initiator who respond, active social learner, active social without turn-taking, reluctant active social learners. Beside their valuable categorization, an important result is that they observe more engagement from recurrent posters, that is poster replying to comments made to their initial posts.

If the importance of collective action for learning is agreed upon, the difficulty is identifying it at scale. It is a complex process needing content, temporal and social network analysis. The previous studies justify the importance of a detailed content analysis but they relied on human intervention limiting their potential to scale up.

Scaling up Dascalu et al. (2017); Boroujeni et al. (2017) are the first big scale attempts that we found taking into account time, message content, social and dialogue structure. Each model the students' dynamics with a mixture of Natural Language Processing (NLP) techniques such as LDA or Latent Semantic indexing (LSI), and SNA (eg. block models) applied to big temporal datasets. Dascalu et al. (2017)'s dataset contains 3,685 contributions from 179 participants and spans 2 years. Boroujeni et al. (2017) use 2 datasets of respectively 7,699 and 12,283 messages written by 1,175 and 1,902 participants.

Dascalu et al. (2017) operationalize collaboration with a Cohesion Network Analysis score applied to synchronous chat discussions. It correlates significantly with human discussions' analysis but it is not tested to identify collective actions as the learners were forced by pedagogical design in collaborative groups.

Boroujeni et al. (2017) analyze the influence of the course structure (timing and # of the staffs' publications) on the forum structure, content and on the social network of learners. They show that the course structure correlates to the forum structure (timing and

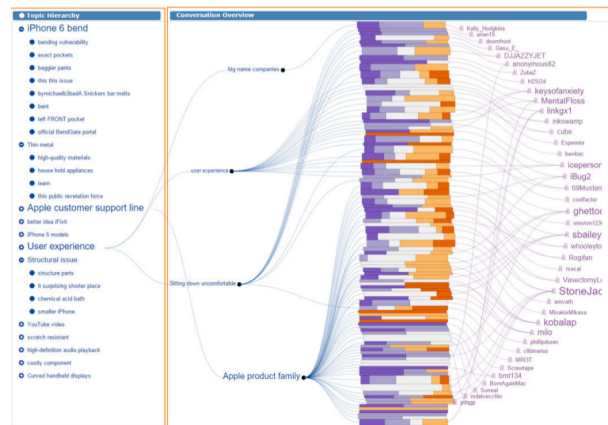


Figure 3: Convis Dashboard (Hoque and Carenini, 2016) helps explore conversations. On the left, the topics found in the forum using LDA and organized hierarchically. In the middle, the colored rectangles show a sentiment analysis for each message. Each message is linked to his author placed on a semi-circle and thus creating a social network. Finally, on the right, Convis display the detail of the conversation.

of students' posts), but not to the forum content or to the social network grown from the students' interactions in the forum. They report that although some learners do not publish often, those still have an important impact in forums because they sometimes trigger long discussions on course's topics. Finally, the authors recommend combining forum activity prediction model with content analysis to support instructors focusing on important discussions.

These two studies exemplify the possibility to get collective actions indicators based on content, structure and time, and as in (Ezen-Can et al., 2015) they push for better support tools for tutors.

3.2 Visualizations as support tools

Visualization as supporting tools have been used successfully in teaching contexts. Heer and Shneiderman (2012) classify the important visualization, while Emmons et al. (2017) and citeLeeuwen2014 advocate their generalization to support all LMS users.

Exploration and awareness tools Medina et al. (2016) use a LDB to provide quick and precise feedback with their Behavioral Awareness Mechanism. They tackle the problem of portability and provide dynamic feedback across several platforms to 24 students working on collaborative projects. They use communication, coordination, motivation, performance and satisfaction indicators to operationalized collective actions. Other studies showed how group

awareness, i.e. rapid feedback about collective action, and visual narratives (Yousuf and Conlan, 2015) are beneficial to the students' engagement, even if no content analysis is done (May et al., 2011). Davis et al. (2017) evaluated the impact of a radar type visualization given to students in a two MOOCs providing them with awareness on what previous sessions learners had done at the same time of the course. Their visualization had a positive impact on older students but it did not improve significantly the younger students' activity in the forums.

Generally, as Qu and Chen (2015) note, there is a "need to develop both advanced data mining methods to reveal patterns from MOOC data and visualization techniques to convey the analytical results to end users and allow them to freely explore the data by themselves". VisForum Fu et al. (2017) answers Qu and Chen (2015)'s call. This LDB (Figure 2) provide a visual analytic system to interactively explore the forum of a LMS. The complex interface helps the tutor group users and compare them to gain insights on the general forum's dynamic in terms of structure but also in terms of sentiment analysis. In Gómez-Aguilar et al. (2015), an original spiral visualization of Moodle's activities enabled the authors to spot that students' activities peaked on the same days for students with similar grades. The visualization cleared helped the author identify this interesting behavioral trend. Convis, as an exploratory visualization, also satisfies Bull and Kay (2016)'s recommendation for negotiable user models (Figure 3). It is a forum exploration tool designed around a topic model that evolves with users' feedback. It facilitates finding insightful messages from discussions crammed within hundreds. Finally, Guo et al. (2017) propose TieVis, an original scalable visualization specifically tailored to track explore and analyze dynamics in interpersonal links, like those we could have between the actors mentioned in the previous section.

The limit of these researches is their complex visualizations. iForum required an extensive explanation from the designers to help the instructor grasp what was shown. Similarly, in Convis some users reported difficulties to use the visualization efficiently and in TieVis the authors recognized that some of their visualizations were not intuitive at all.

It is clear that visualizations can help creativity and holistic thinking; improve the ability to make effective inferences; that translating or making visual analogies reinforces conceptual development; impacts cognition, helps sense-making and understanding (Klerkx et al., 2014). Without contradicting the later, Twissell (2014) clarify the visualizations limits : *a*) different learning styles, natural differences

in learners have a significant impact on the way diagrams are perceived, visualized and understood *b*) visualizations do not equally affect all types of learning activities.

Visualizations' effectiveness The study from Anaya et al. (2016) investigates how to reinforce student collective actions in the LMS dotLRN. Noticeably they focus on directly helping the students, by designing a comprehensible tree-based visualization explaining to the student why they received a recommendation to act more collectively and how having a higher-order thinking behavior would be beneficial to them. The engineer students working on a collaborative project reported to understand the tool and generally found it useful.

Nevertheless, precaution has to be taken with visualizations for young learners because, for the least, Lonn et al. (2015) found that a LDB could have undesired side effects on teenagers. Analyzing students in a summer camp remedial program, they reported that extensive referral to a LDB downgraded some mastery goal willing students to students only willing to show proof of competence only. The opposite was not witnessed. Therefore, some students abandoned their initial motivation to understand and aimed to trick the system so that the LDB showed that they understood.

This last experiment justifies that although we aim to support tutors with explorable visualizations, we will consider topic based visualizations rather than user-based ones. Topic-based visualizations do not emphasizes individual actions and, therefore, should damper the motivations to trick the system by adopting a superficial behavior.

4 The explorable collective dynamic model

In this section, we detail our datasets and present the model that we are going to use to analyze the collective dynamics from them.

4.1 Dataset collection

Table 1 lists our seven datasets collected in 2017 and 2018. They are organized into four groups based on the datasets' origins. The datasets contain forum information from the following online courses: 1) Coursera (2018), a database extraction for a Human Right (HR) and Understanding Financial Markets (UFM) MOOCs. 2) Moodle (2009), a database extraction without message content for a French as a

Dataset source	Discussion (#)	Message (#)	Author (#)	Time		Structure ⁱ	Extra ⁱⁱ	
				Span (d)	Precision			
Moodle (2009)								
FFL	348	1490	19	78	s	T	Active	time, Citations, Att.
Coursera (2017)								
PP	868	2548	1112	365	[1 h; 2 m] ⁱⁱⁱ	W, G & A	V & C	
PML	1135	4157	982	240	[5 h; 1 m] ⁱⁱⁱ	W, G & A	V & C	
AT	248	549	311	728	[1 d; 1 y] ⁱⁱⁱ	W & A	V & C	
Coursera (2018)								
HR	499	1004	638	989	ms	W, G & S	V, C & Sub.	
UFM	1318	9460	4609	1022	ms	W, G & S	V, C & Sub.	
Hangouts (2018)								
VUCI	5	7297	96	327	s	G & S	-	

Table 1: List of datasets and courses that we use to experiment our LDB. ⁱThe forum structure is given by the existence of different forum types: Weekly (W), General (G), Technical Support (S), Thematic (T) or Assignment (A) related. ⁱⁱExtra information is often available, such as messages up votes (V), comments (C), subscription (Sub.) or file attachment (Att.). ⁱⁱⁱWhen data was scrapped, the dates were in humanized format (e.g. 6 month ago, 23 minutes ago), therefore the precision varies with the posts' ages. Recent posts can be compared with greater precision than older ones. We give the intervals in which the precision varies in hours (h), days(d), month (m) and year (y).

Foreign Language (FFL) course. 3) Hangouts (2018), a JSON export from the VUCI's G Suite for Education with the data from 5 chats setup-up by the university staff for the staffs or the students. 4) Coursera (2017), a saving of online courses using selenium web scraper. The dataset is then transformed and stored as a CSV file to be processed by a Python engine. It has messages' content but approximates the timestamp. Three courses are available: Python Plotting (PP), Python Machine Learning (PML) and African Towns (AT) an urban planning course.

4.2 Collective dynamic model

Implicit relationship's strength Figure 1 gives a first example of messages' correlation, or closeness, translated as interaction's strength between their authors. There, the strength is either high, low or null. In practice the strength I , that we will refer to as *implicit relationship's strength*, could be anything in $[0; 1]$. We propose to define the implicit relationship strength between two messages as a function of time, topics and actors. This translates the idea that the messages relationship depends on :

Who wrote them. Do the messages' authors have already interacted together before ? Is the author a super poster, a lonely lurker ? One will probably consider a message differently depending on his relationship to the message's author.

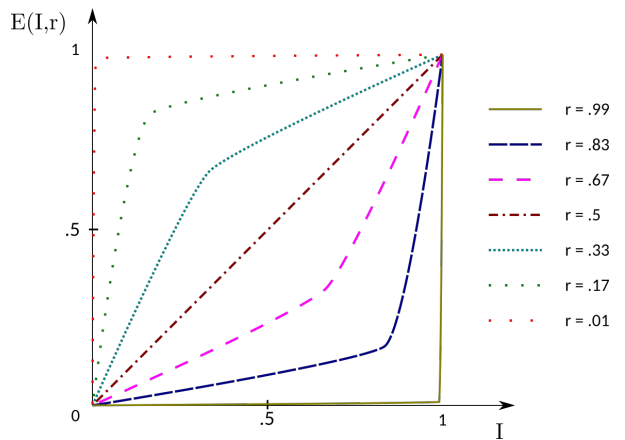
Time Obviously, the delay (or time delta) between

two messages influence the strength of their relationship. The quicker the response, the stronger the link.

Content should also play an import role in the way messages relate to one another. The difficulty is to reliably automate content analysis, but NLP techniques exist to advance in that direction.

Required message correlation As we said earlier, deducting the causal relationship between messages

Figure 4: Graphical proposition for the function $E(I, r)$, the explicit messages' interaction strength. I is the "implicit" strength based on content, time and social network structure. r is "requirement" set by the observer.



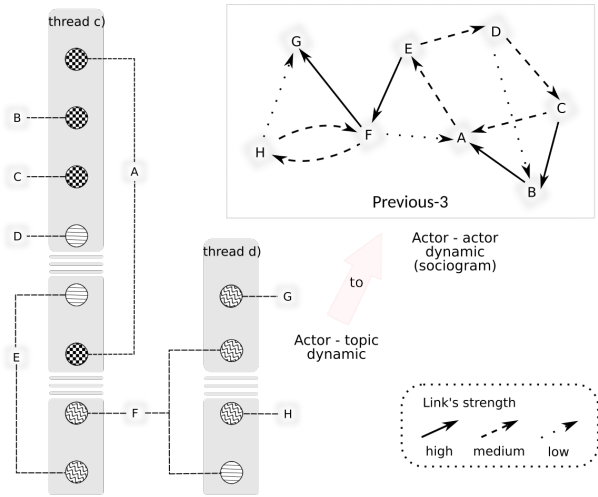


Figure 5: Interactions cycles built from a bi-party actor-topic graph Thread c and d are transformed to an actor-actor graph. Dotted arrows denotes weaker links.

is difficult because one has to guess what is the real intention of the message’s author. To avoid errors, we do not directly deduce the messages real correlation based uniquely on the implicit strength. Instead, we propose to make the relationship strength dependent on a parameter set interactively by the observer. We call it the *required message correlation* r ($r \in [0; 1]$). If the observer set $r \approx 0$ then, for him, the requirement for a message to be linked to other messages is weak and the interactions between messages, actors and topics will be common. Although that would probably lead to overly complex and unusable dynamics metrics and visualizations. Conversely, if $r \approx 1$, the requirement is high, meaning that the observer wants linked messages to be close in time, have a lot of topic overlap and be written from closely connected authors. In that case messages, actor and topics will hardly have any relations with one another and dynamic will probably be invisible.

Explicit relationship’s strength The graph of the function E could be like the one pictured in Figure 4. If the observer’s requirement is high, $r \approx 1$, then, for most I s, the interaction E should be low, and conversely, if the observer’s requirement is low, $r \approx 0$, then the interaction E should be high, for most I s.

We care about this interaction because it’s based on its value that we display the actor-actor or topic-topic dynamics. To further illustrate our intent, we complete our first example with longer threads (Figure 5). We set four strengths to I : high, medium, low or ≈ 0 . Each time or topic delta decreases the implicit

strength by one unit. Therefore, in our case, keeping the topic unchanged, the maximum number of relations a message can have with “previous” messages is 3. We call this connection pattern *previous-3*. But, the I function could have other forms. For example, the *star* pattern, i.e., I been strong for the initial message but null for the others; or the *previous- ∞* pattern, also called “total co-presence” in Wise et al. (2017), denoting existing correlations with all the previous messages. In Figure 5c), not only does actor D connects to actor C but he also connects to actor B . He potentially could have been connected to actor A but in addition to their time delta of 3, there is a topic delta dropping the strength of I nearly to 0. Hence, only an exceptionally low requirement r would explicit E the interaction between the messages of actors A and D . In our case, only if D had published on the same topic as A would their implicit relationship be high enough to gain visibility in our sociogram since this is not the case, D is not directly connected to A in the associated sociogram.

The results of these manipulations are a temporal actor-actor network and a temporal topic-topic network that can be represented by weighted oriented graphs. Snapshots of an actor-actor network from the PP dataset is presented in Figure 9.

Identifying collective actions Once we built the actor-actor and topic-topic networks, we want to identify potential collective actions. Those are derived from the actor-actor network structure. We make the hypothesis that collective actions need the presence of a recurrent actor, that is an actor replying to one of his replier (Chua et al., 2017). We take it as the evidence that at least one of the actors has potentially assimilated someone else’s message before acting, therefore initiating a collective action. Structurally, recurrent actors form cycles in the sociogram. For example, in Figure 5c), actor A who posted twice the thread, close the cycle $A \leftarrow B \leftarrow C \leftarrow D \leftarrow E \leftarrow A$. Furthermore, since actor E is in cycle with A and F , and F with H , we will consider that actor A and all of the above are engaged in a common collective action with H . G on the other side is not part of any cycle and, therefore, does not participate in collective action. In fact, G published a message and disappeared. We have no evidence that his message had an impact on others or others on his. That is why we consider necessary (but not sufficient) that the recurrent interactions conditions collective action. In that sense, we further Chua et al. (2017)’s findings that recurrent interactions are important for discussions.

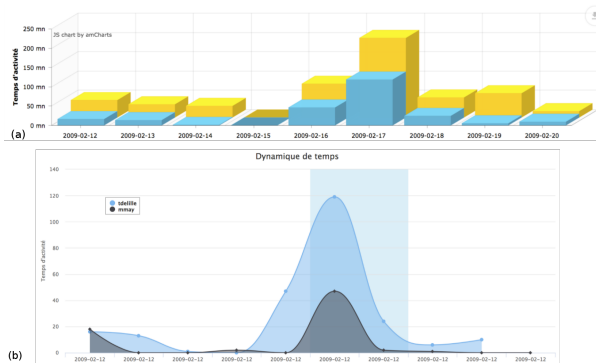


Figure 6: Visualizations from the FFL dataset.

5 Firsts visualizations

We now introduce three visualizations from our work in progress. They were made separately, each testing some elements of the global conception model presented in Figure 8.

5.1 Moodle dataset

We used the FFL dataset to sketch our first visualizations. Our Moodle dataset has the particularity to contains detailed information about the actors' activity type and duration. It enabled us to distinguish the users' active time from their idle times. With that information, we came up with the visualizations of Figure 6, built as part of a standalone web application. Once we selected a user, we see the visualizations corresponding to his active time. The top chart presents, in yellow, the total time spent in the forums for a user, day per day and relates it with his active time, shown in blue. To handle the scaling problem, we implemented a monthly, weekly and daily based grouping criteria. On the lower chart, we compared the activity time of two users. We see that, although they display similar activity patterns over time, one is generally more active than the other.

This was a successful test to sketch our firsts visualizations, but the FFL dataset lacked content and its size did not create a huge monitoring problem for the tutors. Albeit, this dataset is interesting because it emphasizes the importance of the activity type. The following step is to scale up with a bigger dataset that includes content.

5.2 Hangouts dataset

The hangouts dataset is slightly different from the other datasets. It is less structured because it comes from chats and not forums. Figure 7 displays 6 274

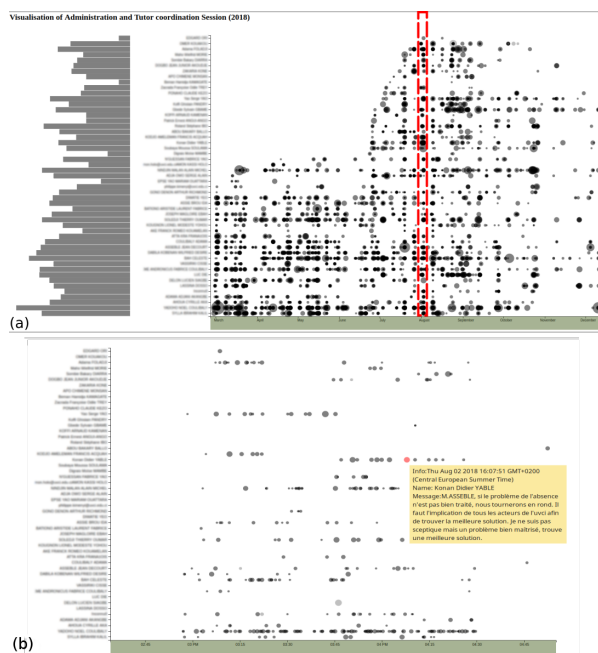


Figure 7: Detail of VUCI conversation taking place in 2 hours. Each circle is a message, and hovering over them brings up its content. The circle's size is proportional to their content's length. Message are layered vertically by actors. On the left is an indication of the actors total messages count.

messages from one chat, gathering several threads of exchanges between the VUCI's administration and their tutors, from March 2018 to December 2018.

We started from a manual, but automatable, export of Google's hangouts services. It gave us a JSON file that we preprocessed in python and fed to d3, a visualization JavaScript library, via a standalone Django web application. We built a LDB, testing on that larger dataset, interactive features such as zooming, panning, data point selection. The figure's pane (a) contains a bird's eye view of all messages. Users are represented vertically, in the middle, with their names. On the left is a histogram of message count for each user. On the right, along with the time axis, we plotted the messages as discs whose areas are proportional to the messages' length. Activating the mouse wheel while on the time axis zoom in and out. Below, is the 3 hours period framed in red, zoomed. It shows a message pop-up, with full detail, activated by the mouse hovering a data point.

In this investigation, we did not include the SNA and NLP analysis because our objective was the visualization of a large dataset with content and the handling of the scaling problem. It proved that our technology choices were sound. We transformed the

dataset of several thousand messages, from the JSON file to the HTML rendering, in a few seconds. But it also pinpointed the importance to implement many interactive exploration functions to alleviate the scaling problem. For examples, ways to quickly zoom on a few data points without losing the overall picture, as well as ways to filter and order data point or axis labels, and also enabling more intricate communication between the different LDB's charts. In addition to all this, a major drawback to our visualization is that it did not take into account, yet, the final users. Finally, besides defining visual modalities, we still need to test the algorithm to compute the collective activity indicator.

5.3 Coursera's dataset

We used the PP dataset from Coursera 2017 to investigate the construction of a collective activity indicator with SNA techniques. We came up with the sociogram (Figure 9) illustrating an actor-actor dynamics. Nodes are all learners. We removed the tutors and the course's mentors to approach Dillenbourg's collaboration definition that we gave in Section 2. The users are linked based on their proximity to the previous-3 actors who published in the same discussion. The arrows' width depends on the messages' timestamp closeness, # of co-occurrences of the authors and # of votes that the message collected. We colored them by discussion, and order them by age, the oldest being the lightest. This is an intermediate visualization that is used for analysis purposes and will not be presented to the end users for two reasons: *a*) it gives abstruse information for someone that does not have access to the raw data, *b*) it represents the actors as nodes and as we noted in section 3, we would rather have visualizations showing

topics than persons. We present it to illustrate what a social network from our dataset looks like, and because, zoomed and reduced to the three snapshots (b), (c), (d), representing three successive yearly quarters, we distinguish an evolving pattern. In particular a detailed analysis of actor 642, circled in red, show that he started to designate two other messages probably because they were meaningful to him (a), then he engaged in several message exchanges designating others' message meaningful as his where also bringing attention (c), and in the most recent quarter someone commented one of his earlier message (d). It is not clear from Figure 9 if actor 642 was part of cycles. Testing our hypothesis that actors in cycles share a collective dynamic is in our perspectives.

6 Perspectives and Conclusion

6.1 Perspectives

The three test and visualizations presented are preparing further work to build: a collective activity indicator taking in account the social network structure, the content of messages and their evolution in time, and visualizations for that indicator.

To further our effort to find visual modalities for the indicator, we conducted a small survey in July 2018 with 48 tutors from the VUCI to introduce our project and start engaging them in a co-construction process. 27 were not satisfied or unsure about their current tools' effectiveness to monitor their students' work. 39 agreed or strongly agreed that ICTs could help their students better collaborate and 40 that collaboration was, indeed important for learning. In a second survey, we plan to ask the tutors the kind of visual representation they would find useful to monitor the collective activities of their students, but also what dimensions of the relationships between messages they would like to leverage to explicit visually those relationships. This is part of a co-construction approach that should engage the tutors, facilitating the adoption of our visualization while increasing its usability and impact.

Concerning the portability and validation of our pipeline stages (Figure 8), we will need to continue working with several datasets, extending our unified model to incorporate SNA and NLP statistics for all datasets. The portability assumption rests on our capacity to extract periodically, every few minutes, hours or days, data from the main LMS. This we will necessitate proper APIs authorizations to make our LDB communicate effectively with the LMS.

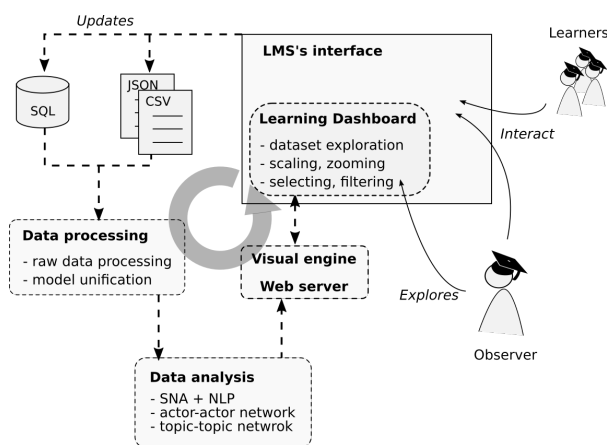


Figure 8: Data Analysis cycle.



Figure 9: At the top (a) is half of compound yearly actor-actor network. The three bottom images (b), (c) and (d) are closeup around actor 642 during the quarters of the year. Higher resolution images for all figures are available at <https://git-lium.univ-lemans.fr/mkone/csedu-2019>

6.2 Conclusion

In this paper, we presented a model to detect collective activities from the forums' discussions. We based our model on an implicit message relationship and an external parameter set by an observer to explicit that relationship. Doing so, we hope to facilitate the portability of our indicator to courses covering different domains, spanning various time periods and having different populations. Learning Analytics (LA) is at a turning point where lots of attention is moving to support tools rather than fully automated learning solutions (Koné et al., 2018; Baker, 2016). Therefore, we started investigating ways to give a visual feed of the collective dynamics spurring from the LMSs forums, back to the tutors. We illustrated our work in progress with three visualizations pushing for more data analysis and data visualization for learning. We further hope that this work will help tutors and, eventually, students discover the topic-topic dynamics in their MOOCs and support collectives activities, so beneficial to learning.

References

- Anaya, A. R., Luque, M., and Peinado, M. (2016). A visual recommender tool in a collaborative learning experience. *Expert Systems with Applications*, 45:248–259.
- Baker, R. S. (2016). Stupid Tutoring Systems, Intelligent Humans. *International Journal of Artificial Intelligence in Education*, 26(2):600–614.
- Boroujeni, M. S., Hecking, T., Hoppe, H. U., and Dillenbourg, P. (2017). Dynamics of MOOC discussion forums. In *LAK*, pages 128–137.
- Bull, S. and Kay, J. (2016). SMILI: a framework for interfaces to learning data in open learner models, learning analytics and related fields. *International Journal of Artificial Intelligence in Education*, 26(1):293–331.
- Chua, S. M., Tagg, C., Sharples, M., and Rienties, B. (2017). Discussion Analytics: Identifying Conversations and Social Learners in FutureLearn MOOCs.
- Dascalu, M., McNamara, D. S., Trausan-Matu, S., and Allen, L. K. (2017). Cohesion network analysis of CSCL participation. *Behavior Research Methods*, pages 1–16.
- Davis, D., Jivet, I., Kizilcec, R. F., Chen, G., Hauff, C., and Houben, G.-J. (2017). Follow the successful crowd: raising MOOC completion rates through social comparison at scale. In *LAK*, pages 454–463.

- Dillenbourg, P. (1999). What do you mean by collaborative learning. *Collaborative-learning: Cognitive and computational approaches*, 1:1–15.
- Emmons, S. R., Light, R. P., and Börner, K. (2017). MOOC visual analytics: Empowering students, teachers, researchers, and platform developers of massively open online courses. *Journal of the Association for Information Science and Technology*, 68(10):2350–2363.
- Ezen-Can, A., Boyer, K. E., Kellogg, S., and Booth, S. (2015). Unsupervised modeling for understanding MOOC discussion forums: a learning analytics approach. In *Proceedings of the fifth international conference on learning analytics and knowledge*, pages 146–150. ACM.
- Fu, S., Zhao, J., Cui, W., and Qu, H. (2017). Visual Analysis of MOOC Forums with iForum. *IEEE Transactions on Visualization and Computer Graphics*, 23(1):201–210.
- Gerlach, M., Peixoto, T. P., and Altmann, E. G. (2018). A network approach to topic models. *Science Advances*, 4(7).
- Gerstenberg, T. and Tenenbaum, J. B. (2017). Intuitive theories. In *The Oxford Handbook of Causal Reasoning*.
- Gómez-Aguilar, D. A., Hernández-García, A., García-Peñalvo, F. J., and Therón, R. (2015). Tap into visual analysis of customization of grouping of activities in eLearning. *Computers in Human Behavior*, 47:60–67.
- Guo, F., Chen, W., Lin, T., Zhu, B., Zhang, F., Wu, Y., and Qu, H. (2017). TieVis: visual analytics of evolution of interpersonal ties. *Journal of Visualization*, 20(4):905–918.
- Heer, J. and Shneiderman, B. (2012). Interactive dynamics for visual analysis. *Queue*, 10(2):30.
- Hoque, E. and Carenini, G. (2016). Multiconvis: A visual text analytics system for exploring a collection of online conversations. In *Proceedings of the 21st International Conference on Intelligent User Interfaces*, pages 96–107. ACM.
- Jelodar, H., Wang, Y., Yuan, C., Feng, X., Jiang, X., Li, Y., and Zhao, L. (2017). Latent Dirichlet Allocation (LDA) and Topic modeling: models, applications, a survey. *arXiv:1711.04305 [cs]*.
- Khalil, H. and Ebner, M. (2014). MOOCs completion rates and possible methods to improve retention-A literature review. In *World Conference on Educational Multimedia, Hypermedia and Telecommunications*, volume 1, pages 1305–1313.
- Klerkx, J., Verbert, K., and Duval, E. (2014). Enhancing Learning with Visualization Techniques. In Spector, J. M., Merrill, M. D., Elen, J., and Bishop, M. J., editors, *Handbook of Research on Educational Communications and Technology*, pages 791–807. Springer New York.
- Koné, M., May, M., and Iksal, S. (2018). Towards a Dynamic Visualization of Online Collaborative Learning. In *CSEdu (1)*, pages 205–212.
- Lobo, J. L., Santos, O. C., Boticario, J. G., and Del Ser, J. (2016). Identifying recommendation opportunities for computer-supported collaborative environments. *Expert Systems*, 33(5):463–479.
- Lonn, S., Aguilar, S. J., and Teasley, S. D. (2015). Investigating student motivation in the context of a learning analytics intervention during a summer bridge program. *Computers in Human Behavior*, 47:90–97.
- May, M., George, S., and Prévôt, P. (2011). TrAVis to enhance online tutoring and learning activities: Real-time visualization of students tracking data. *Interactive Technology and Smart Education*, 8(1):52–69.
- Medina, E., Meseguer, R., Ochoa, S. F., and Medina, H. (2016). Providing Behaviour Awareness in Collaborative Project Courses. *Journal of Universal Computer Science*, 22(10):1319–1338.
- Qu, H. and Chen, Q. (2015). Visual analytics for MOOC data. *IEEE computer graphics and applications*, 35(6):69–75.
- Rehm, M., Gijsselaers, W., and Segers, M. (2015). The impact of hierarchical positions on communities of learning. *International Journal of Computer-Supported Collaborative Learning*, 10(2):117–138.
- Schwendimann, B. A., Rodriguez-Triana, M. J., Vozniuk, A., Prieto, L. P., Boroujeni, M. S., Holzer, A., Gillet, D., and Dillenbourg, P. (2017). Perceiving learning at a glance: A systematic literature review of learning dashboard research. *IEEE Transactions on Learning Technologies*, 10(1):30–41.
- Twissell, A. (2014). Visualisation in applied learning contexts: a review. *Journal of Educational Technology & Society*, 17(3).
- Wang, X., Wen, M., and Rosé, C. P. (2016). Towards triggering higher-order thinking behaviors in MOOCs. In *Proceedings of the Sixth International Conference on Learning Analytics & Knowledge*, pages 398–407. ACM.
- Wise, A. F., Cui, Y., and Jin, W. Q. (2017). Honing in on social learning networks in MOOC forums: examining critical network definition decisions. In *Proceedings of the Seventh International Learning Analytics & Knowledge Conference*, pages 383–392. ACM.
- Yousuf, B. and Conlan, O. (2015). VisEN: Motivating Learner Engagement Through Explorable Visual Narratives. In *Design for Teaching and Learning in a Networked World*, pages 367–380. Springer.
- Zheng, S., Rosson, M. B., Shih, P. C., and Carroll, J. M. (2015). Designing MOOCs as interactive places for collaborative learning. In *Proceedings of the Second (2015) ACM Conference on Learning@ Scale*, pages 343–346. ACM.