



**HAL**  
open science

## Modelling Lake Titicaca's daily and monthly evaporation

Ramiro Pillco Zolá, Lars Bengtsson, Ronny Berndtsson, Belen Martí-Cardona, Frédéric Satgé, Franck Timouk, Marie-Paule Bonnet, Luis Mollericon, Cesar Gamarra, José Pasapera

### ► To cite this version:

Ramiro Pillco Zolá, Lars Bengtsson, Ronny Berndtsson, Belen Martí-Cardona, Frédéric Satgé, et al.. Modelling Lake Titicaca's daily and monthly evaporation. *Hydrology and Earth System Sciences*, 2019, 23 (2), pp.657-668. 10.5194/hess-23-657-2019 . hal-02136630

**HAL Id: hal-02136630**

**<https://hal.science/hal-02136630>**

Submitted on 9 Oct 2020

**HAL** is a multi-disciplinary open access archive for the deposit and dissemination of scientific research documents, whether they are published or not. The documents may come from teaching and research institutions in France or abroad, or from public or private research centers.

L'archive ouverte pluridisciplinaire **HAL**, est destinée au dépôt et à la diffusion de documents scientifiques de niveau recherche, publiés ou non, émanant des établissements d'enseignement et de recherche français ou étrangers, des laboratoires publics ou privés.



Distributed under a Creative Commons Attribution - NoDerivatives 4.0 International License



## Modelling Lake Titicaca's daily and monthly evaporation

Ramiro Pillco Zolá<sup>1</sup>, Lars Bengtsson<sup>2</sup>, Ronny Berndtsson<sup>2</sup>, Belen Martí-Cardona<sup>3</sup>, Frederic Satgé<sup>4</sup>, Franck Timouk<sup>5</sup>, Marie-Paule Bonnet<sup>6</sup>, Luis Mollericon<sup>1</sup>, Cesar Gamarra<sup>7</sup>, and José Pasapera<sup>7</sup>

<sup>1</sup>Instituto de Hidráulica e Hidrología, Universidad Mayor de San Andrés, La Paz, Bolivia

<sup>2</sup>Division of Water Resources Engineering and Center for Middle Eastern Studies, Lund University, Lund, Sweden

<sup>3</sup>Department of Civil and Environmental Engineering, University of Surrey, Guildford, UK

<sup>4</sup>CNES, UMR HydroSciences, University of Montpellier, Place E. Bataillon, 34395 Montpellier CEDEX 5, France

<sup>5</sup>Laboratoire GET UMR5563, CNRS, IRD, Université Paul Sabatier, OMP, Toulouse, France

<sup>6</sup>IRD, UMR Espace-Dev, Maison de la télédétection, 500 Rue JF Breton, 34093 Montpellier CEDEX 5, France

<sup>7</sup>IMARPE, Instituto del Mar del Perú, Puno, Peru

**Correspondence:** Ramiro Pillco Zolá (rpillco@umsa.edu.bo)

Received: 12 March 2018 – Discussion started: 28 March 2018

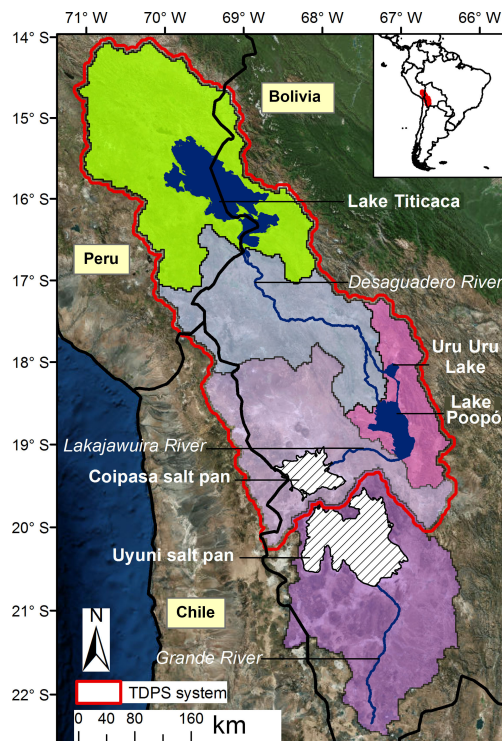
Revised: 20 September 2018 – Accepted: 15 December 2018 – Published: 6 February 2019

**Abstract.** Lake Titicaca is a crucial water resource in the central part of the Andean mountain range, and it is one of the lakes most affected by climate warming. Since surface evaporation explains most of the lake's water losses, reliable estimates are paramount to the prediction of global warming impacts on Lake Titicaca and to the region's water resource planning and adaptation to climate change. Evaporation estimates were done in the past at monthly time steps and using the four methods as follows: water balance, heat balance, and the mass transfer and Penman's equations. The obtained annual evaporation values showed significant dispersion. This study used new, daily frequency hydro-meteorological measurements. Evaporation losses were calculated following the mentioned methods using both daily records and their monthly averages to assess the impact of higher temporal resolution data in the evaporation estimates. Changes in the lake heat storage needed for the heat balance method were estimated based on the morning water surface temperature, because convection during nights results in a well-mixed top layer every morning over a constant temperature depth. We found that the most reliable method for determining the annual lake evaporation was the heat balance approach, although the Penman equation allows for an easier implementation based on generally available meteorological parameters. The mean annual lake evaporation was found

to be 1700 mm year<sup>-1</sup>. This value is considered an upper limit of the annual evaporation, since the main study period was abnormally warm. The obtained upper limit lowers by 200 mm year<sup>-1</sup>, the highest evaporation estimation obtained previously, thus reducing the uncertainty in the actual value. Regarding the evaporation estimates using daily and monthly averages, these resulted in minor differences for all methodologies.

### 1 Introduction

Lake Titicaca, the largest freshwater lake in South America, is located in the endorheic Andean mountain range plateau Altiplano, straddling the border between Peru and Bolivia (Fig. 1). The lake plays an essential role in shaping the semi-arid Altiplano climate; feeding the downstream Desaguadero River and Lake Poopó (Pillco and Bengtsson, 2006; Abarca-del-Río et al., 2012); and supplying the inhabitants with water resources for domestic, agricultural, and industrial use (Revollo, 2001). Anthropogenic pressure on the Altiplano water resources has increased during the last decades due to population growth and increased evapotranspiration losses (FAO, 2011; Canedo et al., 2016; Satgé et al., 2017) as well as to industrial pollution (UNEP, 1996; CMLT, 2014). The



**Figure 1.** Lake Titicaca and the TDPS system within the Altiplano.

challenge of managing water resources in the Altiplano Basin is further exacerbated by climate conditions; annual rainfall is highly variable (Garreaud et al., 2003), while warming in this region exceeds the average global trend (López-Moreno et al., 2015), which is expected to intensify the evaporation from the lake surface and the evapotranspiration losses from the whole basin. The combined impact of these pressures becomes evident at the downstream end of the system, where Lake Poopó is situated. In recent years this lake suffered extreme water shortages, including its complete drying out in December 2015 (Satgé et al., 2017).

Lake Titicaca has a large surface area of about 8500 km<sup>2</sup> on average. Over a certain water surface level, the lake spills out at the south-eastern end and feeds the Desaguadero River. However, the major water output from Lake Titicaca is due to evaporation, which accounts for approximately 90 % of the losses (Roche et al., 1992; Pouyaud, 1993; Talbi et al., 1999; Delclaux et al., 2007). In recent years, Lake Titicaca's level dropped below the outlet threshold for some periods. Thus, a small increase in evaporation or decrease in precipitation may turn the lake into a closed system with no outflow.

Since evaporation dominates the water balance in Lake Titicaca, it is essential to improve the knowledge of the lake's evaporation. This is especially important in light of anthropogenic pressure and due to the evident strong global warming that this region experiences. Previous studies of Lake Titicaca's evaporation have all been based on monthly meteorological observations. Due to the importance of lake evapo-

ration, detailed calculations using daily as well as monthly observations may be necessary. Consequently, this paper investigates different methods for calculating evaporation using both daily and monthly data; in addition we discussed the possibility for the appropriate evaporation models at both timescales to be used on the study the climatic functioning and sensitivity. The main problem with Lake Titicaca's evaporation estimation is the lack of high-resolution temporal data. Taking into account only the mass transfer models for different timescale, Singh and Xu (1997) calculated monthly evaporation. However, doing the same calculations on a daily basis could give radically different results. For both timescales, the evaporation estimation could be more sensitive to vapour pressure. On the other hand, random errors in input data could have a significant effect on evaporation estimation at a monthly scale rather than at a daily scale (Singh et al., 1997).

Lake Titicaca's surface water is cold, with a temperature that remains 12–17 °C throughout the year, and below 40 m depth the temperature is almost constant (Richerson et al., 1977). The water is usually warmer than the air during the daytime, which means that the air immediately above the lake is unstable. The air temperature shows large diurnal variations, often exceeding 15 °C in summer. At an average terrain elevation above 4000 m a.s.l. the solar radiation is strong and the atmospheric pressure is low, which means that the ratio between sensible and latent heat flux (Bowen ratio) is lower than at sea level. To determine the evaporation rate using the aerodynamic mass transfer approach, the atmospheric vapour pressure and surface temperature must be known. Furthermore, a wind function must be used, because the atmosphere over Lake Titicaca is unstable most of the time. This means that the wind function may be different from the function used for most other lakes.

It can generally be assumed that during a year the lake water temperature returns to the value at the beginning of the year. Thus, for the heat balance, it is sufficient to know the annual net radiation, provided that the sensible heat flux can be estimated from the constant Bowen ratio. When using the method for shorter time periods, the time variation of the lake water temperature profile must be known. The heat balance approach and the aerodynamic method can be combined. The Penman method is such a combined approach. A wind function must also be included in this approach.

### Previous investigations

One of the first evaporation studies for Lake Titicaca applied the water balance method using measurements for the period 1956–1973 (Carmouze et al., 1977) and estimated a mean annual lake evaporation of 1550 mm year<sup>-1</sup>. Taylor and Aquize (1984) applied a bulk transfer approach for a shorter period and determined the lake evaporation to be 1350 mm year<sup>-1</sup>. The largest reported annual evaporation is from using the energy balance approach. Richer-

son et al. (1977) found the lake evaporation to be equal to  $1900 \text{ mm year}^{-1}$ . Later, Carmouze (1992) used the same approach and found the lake evaporation to be  $1720 \text{ mm year}^{-1}$ . Using observations for the period 1965–1983 and the water balance method, Pouyaud et al. (1993) found the mean annual evaporation to be equal to about  $1600 \text{ mm year}^{-1}$ . Thus, the mean annual evaporation has been estimated in the range  $1350\text{--}1900 \text{ mm year}^{-1}$ . While the precipitation can vary much from year to year, the large range of calculated annual evaporation,  $1350$  to  $1900 \text{ mm year}^{-1}$ , is likely to be the result of uncertainties in the evaporation estimations and in the temporal resolution of the measurements. Recently, Delclaux et al. (2007) studied the evaporation from Lake Titicaca using in situ pan-evaporation measurements, energy balance, mass transfer and the Penman methods. They concluded that the mean annual evaporation may be about  $1650 \text{ mm year}^{-1}$ , with low seasonal variation between  $135 \text{ mm}$  in July (winter) and  $165 \text{ mm}$  in November (summer).

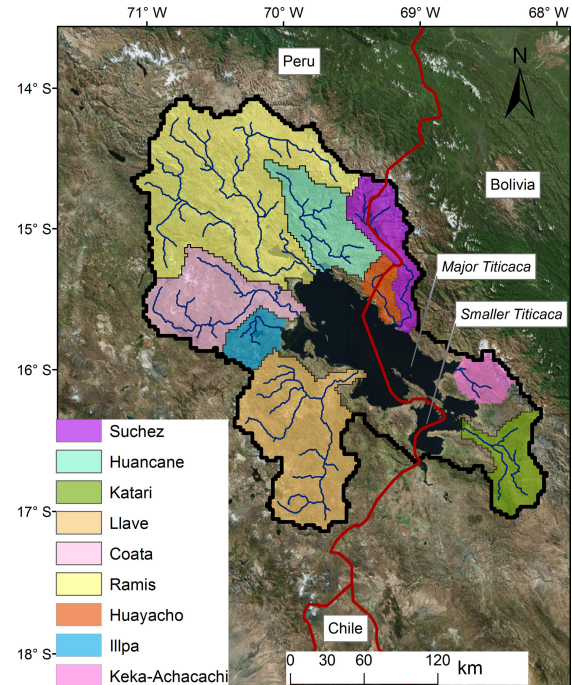
This study applies the methodologies mentioned above using the frequent and accurate hydro-meteorological measurements acquired at Lake Titicaca in 2015 and 2016, with the aim of reducing the uncertainty in evaporation estimates and evaluating the effect of using daily records instead of monthly ones.

## 2 Study area

Lake Titicaca is a unique biosphere due to its large depth and volume, high elevation, and tropical latitude. It is located in the northern part of the Peruvian–Bolivian Altiplano, between latitudes of  $15^{\circ}45' \text{ S}$  and  $69^{\circ}25' \text{ W}$ . It is surrounded by the eastern and western Andean Mountains. The total Lake Titicaca basin area, including the lake itself, is close to  $57\,000 \text{ km}^2$ , with a mean elevation higher than  $4000 \text{ m a.s.l.}$  The outlet sill is at  $3807 \text{ m a.s.l.}$  The lake volume is about  $903 \text{ km}^3$ , with a corresponding mean depth of  $105 \text{ m}$  (Boulangé and Aquize, 1981; Wirrmann, 1992). The only outlet is the Desaguadero River, which ends in the shallow Lake Poopó. The modern Lake Titicaca consists of the major Titicaca lake (Lake Chuquito), which is  $284 \text{ m}$  at the deepest point, and the smaller Titicaca lake (Lake Huiñamarca). The latter lake represents  $1200 \text{ km}^2$ , with a maximum depth of  $35 \text{ m}$  below the spill level. The threshold between the two lake basins is  $19 \text{ m}$  below the spill level (see Fig. 2). The lake is described by Dejoux and Iltis (1992) and in the *Encyclopedia of Lakes and Reservoirs* edited by Bengtsson et al. (2012).

### 2.1 Hydrology

The Lake Titicaca watershed is a part of the TDPS system (Titicaca, Desaguadero, Poopó and Salares) within the Altiplano (Revollo, 2001). Lake Poopó is considered a terminal lake, with only one discharge event into the downstream



**Figure 2.** Lake Titicaca basin with sub-basins and major and smaller lakes.

Coipasa salt pan occurring in the last century (Pillco and Bengtsson, 2006). The basin of Lake Titicaca itself includes the sub-basins Katari, Coata, Huancané, Huaycho, Ilave, Illpa, Keka-Achacachi, Ramis and Suchez. The largest is the Ramis River basin, with an area of  $15\,000 \text{ km}^2$ , representing 30 % of the total basin (Fig. 2). The mean flow of the Ramis River for the period 1965–2011 was  $72 \text{ m}^3 \text{ s}^{-1}$ . The mean outflow from Lake Titicaca through the Desaguadero River for the same period was  $35 \text{ m}^3 \text{ s}^{-1}$ . During those 50 years, Lake Titicaca experienced large changes in water level, with a mean close to  $3808.1 \text{ m a.s.l.}$ , which is about  $1 \text{ m}$  above the outlet threshold (Pillco and Bengtsson, 2006). From its low to high water level, the Lake Titicaca water surface area might change from a minimum of  $7000$  to a maximum of  $9000 \text{ km}^2$ .

### 2.2 Climate

The northern part of the Altiplano is semiarid, while the southern part, including the biggest salt pans in the world, is arid (TDPS, 1993). The climate is further characterized by a short wet season (December–March) and a long dry season (April–November; Garreaud et al., 2003). The average precipitation over the Lake Titicaca basin is about  $800 \text{ mm year}^{-1}$ , out of which more than 70 % fall during the wet season (Garreaud et al., 2003). Over the lake, annual precipitation is assumed to vary from  $1200 \text{ mm year}^{-1}$  in the central part to  $800 \text{ mm year}^{-1}$  along the shores (TDPS, 1993). January is the wettest (about  $180 \text{ mm month}^{-1}$ ) and



**Table 1.** Climatological and hydrological components of Lake Titicaca for 1966–2011.

Months	Ramis flow (m <sup>3</sup> s <sup>-1</sup> )	Inflow (m <sup>3</sup> s <sup>-1</sup> )	Outflow (m <sup>3</sup> s <sup>-1</sup> )	Lake depth (m)	Precipitation (mm month <sup>-1</sup> )	Air temperature (°C)	Relative humidity (%)	Wind velocity (m s <sup>-1</sup> )
Jan	173.5	549.0	31.3	283.9	177.0	10.2	67.5	1.9
Feb	198.8	629.4	39.4	284.1	141.6	10.1	67.4	1.8
Mar	190.4	602.8	49.8	284.4	126.8	10.0	67.3	1.8
Apr	104.9	332.1	50.9	284.5	50.6	9.8	61.9	1.7
May	38.7	122.6	46.5	284.5	13.2	8.8	54.9	1.7
Jun	20.7	65.5	41.8	284.4	7.3	7.8	52.9	1.9
July	14.5	46.0	37.0	284.3	6.6	7.7	52.8	1.9
Aug	11.0	34.9	32.1	284.2	13.2	8.3	53.7	2.0
Sep	9.9	31.3	28.1	284.1	29.9	9.2	55.1	2.1
Oct	14.0	44.2	24.1	284.0	45.5	10.2	55.4	2.1
Nov	24.0	76.0	21.7	283.9	56.7	10.8	56.4	2.1
Dec	55.2	174.7	22.1	283.9	102.5	10.6	62.4	2.0

July the driest (less than 10 mm) month. In the central and southern parts of the Altiplano, the total annual precipitation is about 350 mm (Roche et al., 1992; Pillco and Bengtsson, 2006) and is less than 200 mm over the Salares in the southernmost areas (Satgé et al., 2016). The seasonal variability of precipitation in the basin is related to changes in the upper troposphere circulation. During the Austral summer, an upper-level cyclone is established to the south-east of the central Andes. The Bolivian high brings easterly winds and allows influx of moisture from the central continent over the plateau during periods, intensifying the precipitation (Garréaud, 1999; Vuille et al., 2000).

The daily air temperature over Lake Titicaca is rather constant throughout the year, usually varying between 7 and 12 °C but sometimes up to 20 °C in summer. The Titicaca region is more humid than the more southern parts of the Altiplano. The relative humidity varies between 52 % to 68 % as a monthly average, with diurnal variation between 33 % and 80 %. According to Carmouze (1992), the dominant wind on the lake is in the north-west to south-east direction, with mean monthly wind velocity close to 2 m s<sup>-1</sup>, rarely reaching 5 m s<sup>-1</sup> at the daily time step. The general climate and hydrology are summarized in Table 1. The total river inflow was estimated through a representative area approach based on the Ramis River discharge.

### 3 Methods

#### Lake evaporation models

Four evaporation estimation conventional methods were applied in this study: water balance, energy balance, mass transfer and the Penman method. These approaches have previously been used by other researchers to estimate Lake Titicaca's evaporation at a monthly time step (Carmouze, 1992;

Pouyaud, 1993; Delclaux et al., 2007). The methods are briefly described as follows.

#### 3.1 Energy balance approach

The energy balance approach (Maidment, 1993) which comes from the integral energy balance equation of a reference volume at the air–water interface, the evaporation component in terms of latent heat flux is

$$\lambda E = \frac{R_n - Q_{\text{heat}}}{1 + \beta}, \quad (1)$$

where  $\lambda$  is the latent heat vaporization (J kg<sup>-1</sup>),  $E$  is evaporation rate (mm day<sup>-1</sup>),  $R_n$  is net radiation (W m<sup>-2</sup>),  $Q_{\text{heat}}$  is heat storage within the water (W m<sup>-2</sup>) and  $\beta$  is the Bowen ratio (Bowen, 1926):

$$\beta = \gamma \frac{T_w - T_a}{e_w - e_a}, \quad (2)$$

$$\gamma = \frac{c_p P_a}{0.622 \lambda}, \quad (3)$$

where  $\gamma$  is the psychrometric constant (mbar °C<sup>-1</sup>);  $T_w$  and  $T_a$  are the surface water and air temperature (°C), respectively;  $e_w$  and  $e_a$  are the water surface and air vapour pressures (Pa), respectively;  $c_p$  is the specific heat capacity (J kg<sup>-1</sup> °C<sup>-1</sup>); and  $P_a$  is the atmospheric pressure (kg Pa). The psychrometric constant, and thus also the Bowen ratio, are lower at this high altitude than at sea level. The net radiation is the sum of net short-wave and net long-wave radiation. The net short-wave radiation is  $R_s (1 - \text{albedo})$ , where  $R_s$  is the solar radiation reaching the lake (W m<sup>-2</sup>). The atmospheric long-wave radiation as well as the back radiation are computed from Stefan's law. The emissivity of the water is well known and was set to 0.98, and the emissivity atmosphere must be known. The emissivity of the atmosphere

depends on humidity, temperature and cloudiness. The atmospheric emissivity accounting for clouds was proposed by Crawford and Duchon (1999):

$$\varepsilon_e = (1 - s) + s\varepsilon_o(T_a, e_a), \quad (4)$$

$$s = \frac{R_s}{R_{s,o}}, \quad (5)$$

$$R_{s,o} = R_a e^{\left(\frac{-0.0018P_a}{K_t \sin\phi_{24}}\right)}, \quad (6)$$

$$\varepsilon_o = 1.18 \left(\frac{e_a}{T_a}\right)^{\frac{1}{7}}, \quad (7)$$

where  $s$  is the proxy cloudiness defined as the ratio of measured incoming solar radiation  $R_s$  ( $\text{W m}^{-2}$ ) to the solar radiation received for the clear-sky conditions  $R_{s,o}$  ( $\text{W m}^{-2}$ ), and  $\varepsilon_o$  is the emissivity in the clear-sky condition, which is determined from the vapour pressure  $e_a$  expressed in hPa and  $T_a$  temperature in Kelvin. The  $\Phi_{24}$  is the mean daily sun angle. The constant 1.18 describes the attenuation defined for the region according to Lhomme et al. (2007). The extraterrestrial solar radiation  $R_a$  ( $\text{W m}^2$ ) is determined as a function of local latitude and altitude and time of year, using the turbidity coefficient  $K_t = 0.85$ .

The energy equation is fairly easy to use over a full year, since the lake water usually returns to its initial state when computations were started or when  $Q_{\text{heat}}$  equals zero ( $\text{W m}^{-2}$ ). When using the approach over shorter periods the variation of the water temperature in the lake must be accounted for. In Eq. (1), the change of heat storage is included. From temperature water profiling observations, it was assumed that the water temperature below 40 m does not change from month to month. The temperature,  $T_w$ , above this mixing depth,  $h_{\text{mix}}$  (m), changes but remains almost homothermal after convective mixing during the night (Richerson et al., 1977), which also is corroborated by our own field investigations. Thus, the change of heat content can be estimated from measured surface temperature:

$$Q_{\text{heat}} = \rho c_p \frac{V_{\text{mix}}}{A_{\text{lake}}} \frac{\partial T_w}{\partial t}, \quad (8)$$

where  $\rho$  is density of water ( $\text{kg m}^{-3}$ ),  $c_p$  is the specific heat capacity of water and  $V_{\text{mix}}$  is the volume above the mixing depth ( $\text{km}^{-3}$ ). Carmouze et al. (1992) introduced the concept of the exchange of heat between surface and deep water using the energy balance concept. The results of Carmouze et al. (1992) were compared to the calculation results in the present study.

### 3.2 Mass transfer approach

The mass transfer aerodynamic approach is used in various models based on Dalton’s law (Dalton, 1802). The latent heat transfer is related to the vapour pressure deficit. Most often a linear wind function is used (e.g. Carmouze et al., 1992):

$$E = (a + bU)(e_w - e_a), \quad (9)$$

where  $E$  is the evaporation rate,  $U$  is wind velocity ( $\text{m s}^{-1}$ ) and  $e_w - e_a$  is the vapour pressure deficit (mbar). The parameter  $a$  accounts for unstable atmospheric conditions. Carmouze et al. (1992) used  $a = 0.17$  ( $\text{mm mbar}^{-1} \text{day}^{-1}$ ) and  $b = 0.30$  ( $\text{mm mbar}^{-1} \text{s m}^{-1}$ ).

### 3.3 Penman approach

The Penman equation is a combination of energy balance and mass transfer used for evaluating open water evaporation (Penman, 1948):

$$E = \frac{\Delta}{\Delta + \gamma} \frac{(R_n - Q_{\text{heat}})}{\lambda\rho} + \frac{\gamma}{\Delta + \gamma} c(a' + b'U)(e_s - e_a), \quad (10)$$

where  $E$  is open water evaporation. The slope of the water pressure–temperature curve is denoted by  $\Delta$  ( $\text{K Pa s}^{-1}$ ), and  $e_s - e_a$  is the saturation deficit of the air (K Pa); here  $e_a$  is dependent on the relative humidity (%). Delclaux et al. (2007) applied the Penman equation to Lake Titicaca using  $a' = 0.26$ ,  $b' = 0.14$  and  $c = 1$  after optimizing ( $\text{mm day}^{-1} \text{mbar}$ ).

### 3.4 Lake water balance model

The water balance approach was applied to calculate water levels in Lake Titicaca in a previous study by Pillco and Bengtsson (2007). The water balance is

$$A_{\text{lake}} \frac{\partial h}{\partial t} = (P - E)A_{\text{lake}} + Q_{\text{in}} - Q_{\text{out}}, \quad (11)$$

where  $\partial h/\partial t$  represents change in water depth;  $P$  is precipitation on the lake (mm);  $E$  is evaporation from open water ( $\text{mm day}^{-1}$ );  $A_{\text{lake}}$  is water surface of the lake ( $\text{km}^{-2}$ ), which is a function of depth;  $Q_{\text{in}}$  is inflow to the lake; and  $Q_{\text{out}}$  represents the outflow from the lake ( $\text{m}^3 \text{s}^{-1}$ ). Computations were carried out at a monthly timescale for two periods, one for 1966–2011 and another for 2015–2016. As already pointed out, the most reliable method of computing evaporation over long periods is probably the water balance method. However, the computation only can be general, since the inflow to Lake Titicaca is not measured in all rivers.

### 3.5 Possible errors when using monthly averages

The evaporation during individual days is not important for the water balance but is only important over longer periods like months. However, since the equations for calculating evaporation are not linear, the monthly evaporation computed from monthly mean meteorological data may differ from what is found when data with a higher time resolution are used. In the aerodynamic approach the wind speed is multiplied by the vapour deficit. The energy balance approach includes the Bowen ratio, which may differ from day to day and can even be negative for certain periods. If high atmospheric vapour pressure is related to strong winds, the aerodynamic equation using monthly means can yield lower

evaporation estimates than when daily values are used. This is further discussed below. The Bowen ratio changes during a month. When the net radiation is large, the air temperature is likely to be rather high but is not necessarily related to high vapour pressure. For this situation, the Bowen ratio is relatively high, and the computed evaporation is higher than it would have been using a constant monthly Bowen ratio. This means that when using monthly averages, the computed evaporation will tend to be low.

#### 4 Instrumentation and data

For this study, hydro-meteorological parameters and water surface temperature were measured near Lake Titicaca's bank for 24 consecutive months (2015–2016). Vertical lake temperature profiles were also acquired periodically. Observations were taken at 15 min intervals. These records were averaged to daily and monthly values. A Campbell Scientific research-grade automatic weather station (AWS) was installed at the Isla de la Luna (latitude  $16^{\circ}01'59''$ , longitude  $69^{\circ}04'01''$ ), near the shore of Lake Titicaca (Fig. 3). The AWS was equipped with a rain gauge sensor, a CS215 probe for measuring relative humidity and air temperature, an A100R vector anemometer and W200P wind vane to measure wind speed, and a Skye SP1100 pyranometer for solar radiation measurement. The surface water temperature was taken from Juli, Puno (latitude  $16^{\circ}12'58''$ , longitude  $69^{\circ}27'31''$ ), at a distance of 42 km from Isla de la Luna. A handheld thermometer was used to measure water surface temperature at 8 h intervals at approximately 60 m from the shoreline. An increased daily surface recorded temperature is representative of heat storage changes.

Hydrological data, such as inflow to the lake, were observed at the outlet of the Ramis River. The outflow through the Desaguadero River was observed at Aguallamaya. This is 40 km downstream of the lake outlet. However, there are only a few tributaries between the lake and this point that may contribute to the data uncertainty. The water level was observed at Huatajata at the daily time step, shown as depth in Table 1. Additional lake water temperature soundings were carried out close to Isla de la Luna (latitude  $16^{\circ}30'00''$ , longitude  $69^{\circ}15'10''$ ) for specific days during the summer, spring and winter of the study period, using the Hydrolab DS5 multiparameter data sonde. The sounding reached a maximum lake depth of 95 m, with a water temperature recording for each 5 cm at the surface and each 0.5 m below 1 m depth.

Long-term monthly temperature and wind observations from 1960 onwards were available from the Copacabana weather station mentioned above (Fig. 3; Table 1). The El Alto station observations, 50 km from Copacabana, were used to fill 2.5 % of the missing wind data for the period. The monthly precipitation on the lake was determined using the rain gauge at Copacabana and Puno on the lake shore. The total inflow from all rivers was estimated from a repre-

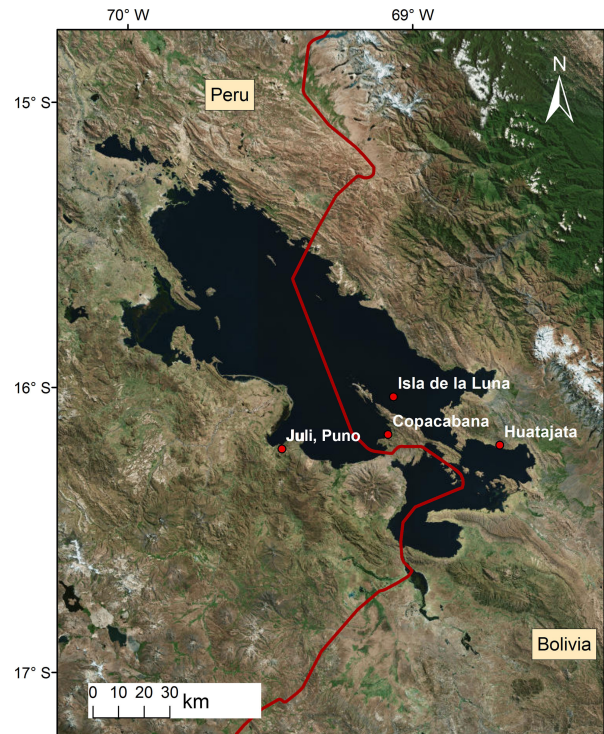


Figure 3. Location of observation points.

Table 2. Monthly mean of hydrological variables observed during the 2015–2016 period.

Month	Lake depth (m)	Inflow ( $\text{m}^3 \text{s}^{-1}$ )	Outflow ( $\text{m}^3 \text{s}^{-1}$ )	Precipitation ( $\text{mm month}^{-1}$ )
Jan	282.9	399.8	37.7	165.4
Feb	283.1	639.7	53.9	146.1
Mar	283.2	427.0	47.3	76.5
Apr	283.3	327.9	42.1	103.9
May	283.3	148.4	40.2	18.1
Jun	283.2	80.2	32.9	7.7
Jul	283.0	56.7	28.6	51.9
Aug	282.9	42.6	24.4	12.5
Sep	282.8	36.8	20.7	26.6
Oct	282.7	32.3	19.1	42.9
Nov	282.6	35.7	18.2	39.0
Dec	282.5	92.0	18.5	87.6

sentative area approach assuming the specific run-off to be the same for all rivers entering into Lake Titicaca. The long-term outflow from the lake was measured at the outlet of the lake and treated by Gutiérrez and Molina (2014).

Tables 2 and 3 summarize hydrological and meteorological measurements used in this study. Subscripts for vapour pressure are “w” for water, “s” for saturated air vapour pressure and “a” for actual air vapour pressure. The computed variables required for evaporation calculations are given in Table 4.

**Table 3.** Monthly averages of main climatic variables observed during the 2015–2016 period.

Month	Water surface	Air temp.	Wind velocity	Relative humidity	Vapour pressure (mbar)			Solar radiation, $R_s$
	temp. ( $^{\circ}\text{C}$ )	( $^{\circ}\text{C}$ )	( $\text{m s}^{-1}$ )	(%)	$e_w$	$e_s$	$e_a$	( $\text{W m}^{-2}$ )
Jan	17.2	11.1	1.60	68.3	19.8	13.9	9.5	273.3
Feb	17.3	11.4	1.61	70.3	19.9	14.2	10.0	292.4
Mar	17.5	12.0	1.50	66.1	20.2	14.7	9.7	273.4
Apr	16.5	10.8	1.52	66.7	19.0	13.6	9.1	229.2
May	15.4	10.7	1.33	53.4	17.5	13.5	7.2	234.9
Jun	14.3	10.1	1.30	51.8	16.7	13.0	6.7	236.7
Jul	13.7	9.7	1.41	50.6	16.1	12.8	6.5	237.9
Aug	14.0	9.7	1.54	54.4	16.4	12.8	7.0	265.8
Sep	14.7	10.5	1.50	57.6	17.1	13.6	7.8	304.7
Oct	15.5	10.9	1.63	58.2	17.6	13.9	8.1	318.7
Nov	16.4	11.7	1.61	57.1	18.8	14.8	8.4	332.1
Dec	16.9	11.6	1.70	64.9	19.5	14.5	9.4	315.9

**Table 4.** Monthly average parameters for evaporation calculations for the 2015–2016 period.

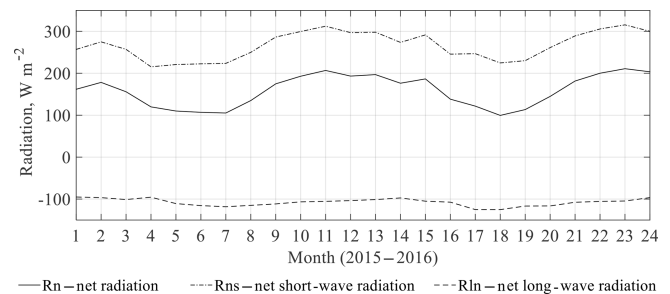
Month	Atmospheric emissivity $\varepsilon$	Bowen ratio $\beta$	Slope of water vapour pressure $\Delta$ ( $\text{mbar } 100^{\circ}\text{C}^{-1}$ )
Jan	0.81	0.38	87.40
Feb	0.80	0.38	89.10
Mar	0.79	0.31	91.90
Apr	0.80	0.35	86.20
May	0.74	0.22	85.20
Jun	0.71	0.19	82.50
Jul	0.71	0.18	80.70
Aug	0.72	0.21	80.60
Sep	0.74	0.21	84.60
Oct	0.75	0.23	86.60
Nov	0.76	0.21	90.70
Dec	0.78	0.30	90.00

Short-wave radiation was measured, while long-wave radiation was computed as described above. The average for all components is shown in Fig. 4. The radiation budget is positive every day, with a mean of about  $150 \text{ W m}^{-2}$ , varying from 100 in winter to  $200 \text{ W m}^{-2}$  in summer.

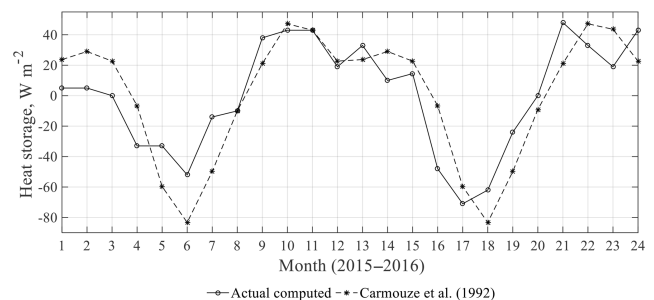
## 5 Results and discussion

### 5.1 Monthly data

Detailed energy balance computations over the period 2015–2016 should give good estimates of the total lake evaporation for that period. After 24 months the lake surface temperature at Puno more or less returned to the temperature at the beginning of 2015. When applying this method over the 2 years of study the mean annual lake evaporation is



**Figure 4.** Monthly average radiative budget for Lake Titicaca in 2015–2016.

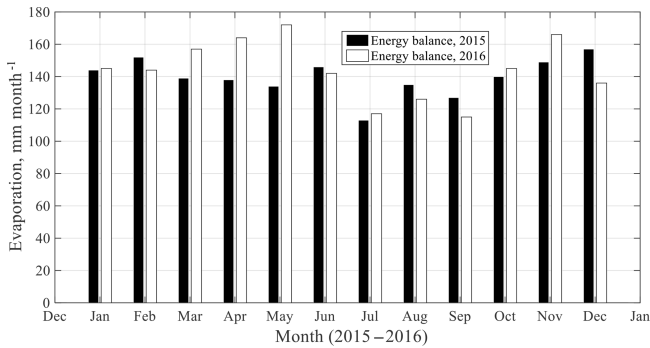


**Figure 5.** Change of heat storage in 2015–2016.

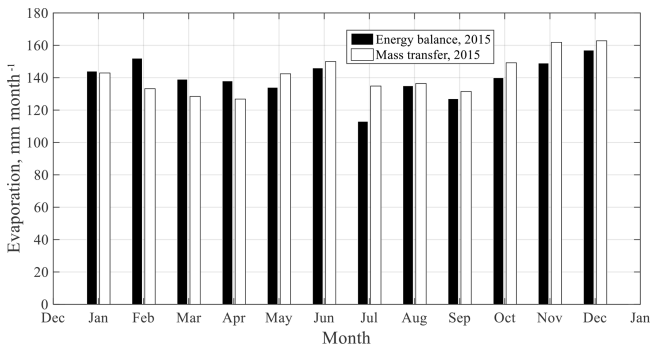
$1700 \text{ mm year}^{-1}$ . When computing the evaporation month by month, the change of heat storage was considered in the way previously described. The mixing depth was set to 40 m. The change of the heat storage is shown in Fig. 5. The values suggested by Carmouze et al. (1992) are shown for comparison. The calculated monthly heat storage agrees well with the Carmouze estimates.

The computed monthly evaporation using monthly average data and the energy balance method was somewhat





**Figure 6.** Monthly evaporation computed using energy balance approach.

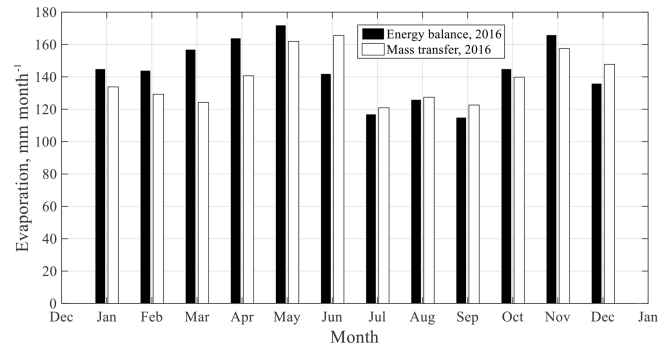


**Figure 7.** Comparison of monthly evaporation computed by energy balance and mass transfer method for 2015.

higher in 2016 than in 2015,  $1725 \text{ mm year}^{-1}$  as compared to  $1680 \text{ mm year}^{-1}$ . The small gap of evaporation between 2 consecutive years is mainly explained by the warmer season that occurred in autumn of 2015; otherwise the evaporation was fairly evenly distributed over the year, being about  $140 \text{ mm month}^{-1}$ , with somewhat lower evaporation rates from July to September (see in Fig. 6).

From the energy balance and the water balance methods, the annual evaporation from Lake Titicaca was estimated in the range of about  $1700 \text{ mm year}^{-1}$ . The monthly variation depends on the change of heat storage, therefore the calculated evaporation may be high one month and low the following month. When using the mass transfer approach, similar annual evaporation to that from the energy balance approach may be anticipated when applying the approaches over 2 full years. This may be the case even though there may be differences when comparing monthly calculations. However, when the coefficients suggested by Carmouze et al. (1992) were used, the evaporation was much higher than  $1720 \text{ mm year}^{-1}$ , which was found from the energy balance method. A good fit for the total evaporation was found using the coefficients  $a = 0.17 \text{ mbar}$  and  $b = 0.155 \text{ mm mbar}^{-1} \text{ s}^{-1}$ .

The monthly evaporation computed by mass transfer over the 2 years is compared with the energy balance calculations



**Figure 8.** Comparison of monthly evaporation computed by energy balance and mass transfer method for 2016.

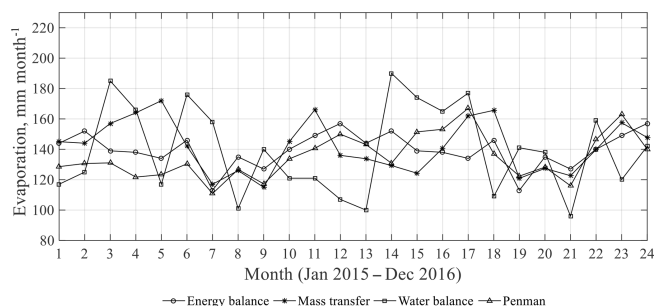
in Fig. 7 for 2015 and in Fig. 8 for 2016. The computed annual evaporation by the last method was  $1700 \text{ mm year}^{-1}$  in 2015 and  $1675 \text{ mm year}^{-1}$  in 2016. Consequently, for individual years the two methods gave similar results and similar seasonal trends. This is expected, since the coefficients in the mass transfer equation were chosen to fit over the 2-year period. For individual months, there are deviations. However, it is not possible to note any systematic differences related to different seasons of the year. The largest difference between the two methods for an individual month was about 30 mm.

A summary and comparison of all investigated methods for the study period are shown in Fig. 9 and Table 5. As seen from these, the evaporation calculated from water balances differs from the three other methods. The water balance method yielded  $1672 \text{ mm year}^{-1}$  as the average for the tow year. As well, the same method gave the largest standard deviation. The variation in mean annual evaporation was  $1633\text{--}1711 \text{ mm year}^{-1}$ . Since the lake water level can be observed at best with a resolution in centimetres, individual monthly evaporation becomes highly uncertain, like in February 2016 and May 2016. Thus, calculated annual evaporation is better performed using the three other methods. In general, the mass transfer, energy balance and Penman methods gave a similar monthly variation as described above; only the evaporation by Penman gave a smaller rate than the rest of models,  $1621 \text{ mm year}^{-1}$ , while energy balance gave the highest evaporation rate,  $1701 \text{ mm year}^{-1}$ .

Water balances were computed for the long-term period and continuous available data in 1966–2011 as well. During the computation the  $A_{\text{lake}}$  parameter in the model was assumed to be constantly equal to  $8800 \text{ km}^2$ . The resulting annual lake evaporation for the period 1966–2011 was about  $1600 \text{ mm year}^{-1}$ . The mean water balance components for the last period at monthly mean values are shown in Table 6. When we used the water balance approach the computed evaporation internally varied greatly from month to month and year to year. This is an indication that some hydrological input data are uncertain, like the precipitation, which can be improved from one point observation at lake shore

**Table 5.** Descriptive statistics of monthly evaporation calculated by the four methods for the period from January 2015 to December 2016.

Method	Mean annual (mm year <sup>-1</sup> )	Mean monthly (mm month <sup>-1</sup> )	Min (mm month <sup>-1</sup> )	Max (mm month <sup>-1</sup> )	Stand. Dev. (mm month <sup>-1</sup> )	Stand. error of mean (mm month <sup>-1</sup> )
Energy balance	1701	141.8	113.0	172.0	15.4	3.1
Mass transfer	1686	140.5	120.9	165.6	13.8	2.8
Water balance	1672	139.4	96.3	189.0	29.3	4.2
Penman	1621	135.2	110.9	167.0	14.5	2.9

**Figure 9.** Monthly actual evaporation calculated by the four methods for the period from January 2015 to December 2016.

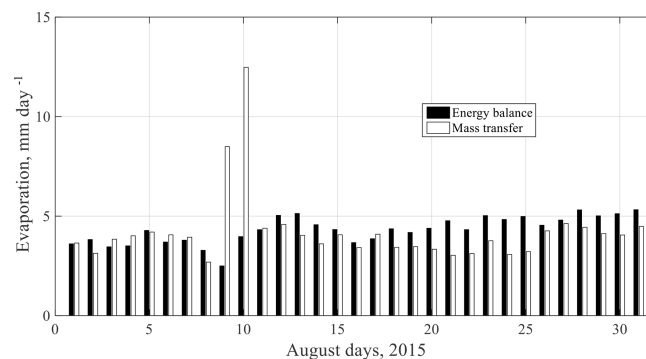
by the satellite observation. In any case, water balance computations over a long-term period should give a reasonable estimate of mean lake evaporation.

## 5.2 Using daily data

When calculating evaporation using daily data, it was found that there are large differences between the methods and ignoring the water balance method. The maximum daily evaporation using the mass transfer method was 12 mm day<sup>-1</sup>. Neither the energy balance nor the Penman method gave a higher evaporation than 8 mm day<sup>-1</sup>. There was poor agreement between the computed daily evaporation computed by mass transfer and the corresponding results using the other two methods.

When the mass transfer approach is used, it is straightforward to determine the daily evaporation. Using the energy balance, the change of heat storage in the lake must be determined with high resolution. Detailed water temperature measurements are not available, however. Instead, it was assumed that the temperature changes at a steady rate through individual months. August is an example, since the temperature for the whole month changed very little (0.2 °C). The computed daily evaporation is shown for August 2015 in Fig. 10. There were 2 days with average winds exceeding 6 ms<sup>-1</sup>. Consequently, the evaporation was high during these days, when the mass transfer approach was used.

When annual evaporation was determined using daily data instead of monthly mean data, there was hardly any difference for the mass transfer method. As indicated above it is

**Figure 10.** Daily evaporation computed by the mass transfer (shaded staples) and energy balance (filled staples) method.

not possible to use the energy balance method with short time resolution when temperature changes have to be taken in to account from day to day. However, the evaporation can be computed while neglecting the heat change, keeping the Bowen ratio constant throughout a month and changing the Bowen ratio day by day. In this case, it was found that evaporation increased by about 2%. The conclusion, considering the many uncertainties involved in estimating evaporation, is that it is sufficient to use monthly means when estimating evaporation.

The evaporation computed with the Penman equation falls between what was found by the energy balance and the mass transfer approach, being somewhat closer to the energy balance than to the mass transfer results. Since monthly means are sufficient for computing evaporation with the two above methods, mean values are also sufficient when using the Penman method.

It has to be noted that Lake Titicaca's near-bank surface temperatures have been observed to be warmer than the lake surface's average during daytime using satellite thermal imagery, as reported in other lakes (e.g. Marti-Cardona et al., 2008). According to this observation, the temperatures acquired for this study are likely to be an overestimation.

The spatial distribution of Lake Titicaca's surface temperature and its impact on the evaporation losses is currently under analysis. However, for the energy balance method, daily changes rather than absolute temperatures were used, which are considered to be reasonable approximations of the

**Table 6.** Monthly mean water balances for Lake Titicaca for the period 1966–2011.

Month	Ramis flow ( $\text{m}^3 \text{s}^{-1}$ )	Inflow ( $\text{m}^3 \text{s}^{-1}$ )	Outflow ( $\text{m}^3 \text{s}^{-1}$ )	Lake water depth (m)	Precipitation ( $\text{mm month}^{-1}$ )	Evaporation ( $\text{mm month}^{-1}$ )
Jan	173.5	549.3	31.3	283.9	177.0	143.7
Feb	198.8	629.4	39.4	284.1	141.6	123.2
Mar	190.4	602.8	49.8	284.4	126.8	124.6
Apr	104.9	332.1	50.9	284.5	50.6	137.2
May	38.7	122.6	46.5	284.5	13.2	139.6
Jun	20.7	65.5	41.8	284.4	7.3	136.6
Jul	14.5	46.0	37.0	284.3	6.6	133.1
Aug	11.0	34.9	32.1	284.2	13.2	121.7
Sep	9.9	31.3	28.1	284.1	29.9	118.3
Oct	14.0	44.2	24.1	284.0	45.5	134.9
Nov	24.0	76.0	21.7	283.9	56.7	134.3
Dec	55.2	174.7	22.1	283.9	102.5	127.9

heat storage changes. Over the larger period of air temperatures observed at the Copacabana weather station (1966–2016), the particular months in 2015–2016 have been characterized by the strongest El Niño dry phenomena during the last 50 years (<http://www.ciifen.org>, last access: 10 January 2017); in comparison to the rest of the years, the air temperatures recorded were higher than the average of  $10^\circ\text{C}$  and close to  $20^\circ\text{C}$  at the daily time step. Then the rates of evaporation found might express, somehow, the indicated warmer period.

## 6 Conclusions

Due to uncertainty of most observed data such as river inflow to Lake Titicaca, and mainly the discharge data, it might not be easy to improve the water balance results; thus it is suggested that the most reliable method of determining the lake evaporation is using the heat balance approach. To estimate the lake evaporation using this method, heat storage changes must be known. Since convection from the surface layer is intense during nights, resulting in a well-mixed top layer every morning, it is possible to determine the change of heat storage from the measured morning surface temperature. The lake evaporation is fairly uniformly distributed over the year, with lows between July and September. The mean annual evaporation is about  $1700 \text{ mm year}^{-1}$ , and the mean monthly evaporation is  $141.8 \text{ mm month}^{-1}$ . When using the mass transfer approach, the required coefficients in the aerodynamic equation was set so that the mean annual evaporation agreed with that obtained from the heat balance calculations. These coefficients were found to be lower than coefficients used in previous studies. Also, when using the mass transfer approach, the evaporation was found to be lowest in July–September.

However, for the purpose of assessing climate change effects on Lake Titicaca's evaporation, the practical approach, rather than the two empirical models, might be the Penman equation due to available observed data for this lake and the integral behaviour of the equation. Also in comparison with the two models proposed in Delclaux et al. (2007) for modelling the lake evaporation, the first model only depends on the solar radiation data, and, additionally, the second one depends on the air temperature factor; thus both models cannot be applied broadly. In the Penman model based on the adjusted wind coefficient, the mean annual evaporation is  $1620 \text{ mm year}^{-1}$ , and the mean monthly is  $135 \text{ mm month}^{-1}$ . So far, monthly evaporation computed using daily data and monthly means resulted in minor differences. The most practical model for use at the daily scale might be the mass transfer and the Penman models in comparison to the energy balance approach, which is of highly demanded observed data. Particularly the Penman equation at the daily temporal scale might correctly be applied for the climate change assessment at this altitude. Nonetheless, according to spatial available data from remote sensing, the evaporation equations used at daily and monthly scales could be applied from now on to improve the spatial pattern of the lake evaporation. Since we had really extreme single warmer days during the period 2015–2016 due to the El Niño phenomenon, higher daily rates of evaporation must be expected; therefore the application of the models at both timescales for the study period we believe that was found the upper limits of yearly evaporation.

*Data availability.* All data can now be freely accessed through requests to [rpillco@umsa.edu.bo](mailto:rpillco@umsa.edu.bo).

*Author contributions.* RPZ coordinated the research and was directly involved in all steps, from fieldwork to proofreading. He built

the database, computed the evaporation for the different models, analyzed the results, and prepared figures and tables. LB contributed to the conceptual approach and structure of the paper. He supervised and validated the calculations and contributed to the writing of the objectives and the scientific background of the paper. RB revised and validated the calculations and collaborated on the writing, mainly for Sect. 5. BMC contributed to the discussion and analysis of results and writing, especially for the Abstract and Sects. 1 and 6. FS collaborated on the analysis of results, particularly on the interpretation of some evaporative models. He prepared the figures depicting maps. FT was in charge of the installation and maintenance of the gauging stations and data quality assurance. MPB improved the conceptual approach of the paper. She also helped to obtain funding for the field data acquisition. LM assisted in the paper drafting and building the database base. He also prepared the chart figures. CG and JP facilitated meteorological records from Peruvian gauging stations. They contributed to the paper structure and to the content of Sects. 1 and 5.

*Competing interests.* The authors declare that they have no conflict of interest.

*Special issue statement.* This article is part of the special issue “Integration of Earth observations and models for global water resource assessment”. It is not associated with a conference.

*Acknowledgements.* We would like to express our sincere appreciation to the HASM, Research Programme – Hydrology of Altiplano from Space to Modeling at GET-IRD and IHH-UMSA (Instituto de Hidráulica e Hidrología, UMSA, Bolivia), financed by the TOSCA-CNES (Centre National d'Etudes Spatiales). We would like to thank SENAMHI-Bolivia (Servicio Nacional de Hidrometeorología de Bolivia) for providing long-term climatic data. Thanks also to the IMARPE-Perú (Instituto para el Mar del Perú/Puno) for providing additional hydrological data as well as surface water temperatures of Lake Titicaca. In addition, our acknowledgment is directed to the project Fortalecimiento de Planes Locales de Intervención y Adaptación al Cambio Climático en el Altiplano Boliviano at Agua Sustentable-Bolivia for providing the Lake Titicaca discharge data. Finally, we thank the programme BABEL Erasmus EU for providing economic assistance and completing this work in Sweden.

Edited by: Anas Ghadouani

Reviewed by: two anonymous referees

## References

Abarca-Del-Río, R., Crétaux, J. F., Berge-Nguyen, M., and Maiso-grande, P.: Does Lake Titicaca still control the Lake Poopó system water levels? An investigation using satellite altimetry and MODIS data (2000–2009), *Remote Sens. Lett.*, 3, 707–714, <https://doi.org/10.1080/01431161.2012.667884>, 2012.

- Bengtsson, L., Herschy, R. W., and Fairbridge, R. W.: *Encyclopedia of Lakes and Reservoirs*, Springer Dordrecht, ISBN-13: 978-1-4020-5616-1, 2012.
- Boulange, B. and Aquize, J. E.: Morphologie, hydrographie et climatologie du lac Titicaca et de son bassin versant, *Rev. Hydrobiol. Trop.*, 14, 269–287, 1981.
- Bowen, I. S.: The ratio of the heat losses by conduction and by evaporation from any water surface, *Phys. Rev.*, 27, 779–787, 1926.
- Canedo, C., Pillco, Z. R., and Berndtsson, R.: Role of hydrological studies for the development of the TDPS system, *Water*, 8, 1–14, <https://doi.org/10.3390/w8040144>, 2016.
- Carmouze, J. P.: The energy balance in the Lake Titicaca, in: *A Synthesis of Limnological Knowledge*, edited by: Dejoux, C. and Iltis, A., Kluwer, 131–146, 1992.
- Carmouze, J. P., Arce, C., and Quintanilla, J.: La régulation hydrique des lacs Titicaca et Poopo, *Cahiers ORSTOM, Série Hydrobiologique*, XI, 269–283, 1977.
- CMLT: Comisión multisectorial para la preservación y recuperación ambiental del Lago Titicaca y sus afluentes, Estado de la calidad ambiental de la cuenca del Lago Titicaca ámbito peruano, CMLT, 152 pp., 2014.
- Crawford, T. and Duchon, C. E.: An improved parametrization for estimating effective atmospheric emissivity for use in calculating daytime downwelling long-wave radiation, *J. Appl. Meteorol.*, 38, 474–480, [https://doi.org/10.1175/1520-0450\(1999\)038<0474:AIPFEE>2.0.CO;2](https://doi.org/10.1175/1520-0450(1999)038<0474:AIPFEE>2.0.CO;2), 1999.
- Dalton, J.: Experimental essays on the constitution of mixed gases, *Manchester Literary and Philosophical Society Memo*, 5, 535–602, 1802.
- Dejoux, C. and Iltis, A. (Eds.): *Lake Titicaca, A synthesis of Limnological Knowledge*, Springer Science, Kluwer Academic Publisher, 1992.
- Delclaux, F., Coudrain, A., and Condom, T.: Evaporation estimation on Lake Titicaca: a synthesis review and modeling, *Hydrol. Process.*, 21, 1664–1677, <https://doi.org/10.1002/hyp.6360>, 2007.
- FAO: The state of the world's land and water resources for the food and agriculture (SOLAW) – Managing system at risk, Food and organization of the United Nation, Rome and Earthscan, London, ISBN-13: 978-92-5-106614-0, 2011.
- Garreaud, R.: Multiscale Analysis of the Summertime Precipitation over the Central Andes, *Mon. Weather Rev.*, 127, 901–921, [https://doi.org/10.1175/1520-0493\(1999\)127<0901:MAOTSP>2.0.CO;2](https://doi.org/10.1175/1520-0493(1999)127<0901:MAOTSP>2.0.CO;2), 1999.
- Garreaud, R., Vuille, M., and Clement, A. C.: The climate of the Altiplano: observed current conditions and mechanism of past changes, *PALAEO*, 194, 5–22, [https://doi.org/10.1016/S0031-0182\(03\)00269-4](https://doi.org/10.1016/S0031-0182(03)00269-4), 2003.
- Gutiérrez, C. B. and Molina, C. J.: Final report: Balance hídrico y escenarios de cambio climático en el lago Titicaca, Project: Fortalecimiento de Planes Locales de inversión y adaptación al cambio climático en el Altiplano boliviano, IDRC-CRDI, Agua Sustentable, La Paz, Bolivia, <https://doi.org/10.13140/RG.2.2.24230.22083>, 2014.
- Lhomme, J. P., Vacher, J. J., and Rocheteau, A.: Estimating downward long-wave radiation on the Andean Altiplano, *Agr. Forest Meteorol.*, 145, 139–148, <https://doi.org/10.1016/j.agrformet.2007.04.007>, 2007.

- López-Moreno, J. I., Morán-Tejada, S. M., Vicente-Serrano, J., Bazo, C., Azorin-Molina, J. I., Revuelto, A., Sánchez-Lorenzo, F., Navarro-Serrano, E., Aguilar, E., and Chura, O.: Recent temperature variability and changes in the Altiplano of the Bolivia and Perú, *Int. J. Climatol*, 36, 1773–1796, 2015.
- Maidment, D. R.: *Handbook of Hydrology*, Mc-GRAW-HILL, INC., ISBN-13: 978-0-07-039732-3, 1993.
- Marti-Cardona, B., Streissberg, T. E., Schladow, S. G., and Hook, S. J.: Relating fish kills to upwellings and wind patterns at the Salton Sea, *Hydrobiologia*, 604, 85–95, 2008.
- Penman, H. L.: Natural Evaporation from open water, Bare Soil and Grass, *P. Roy. Soc. A-Math. Phys.*, A193, 120–145, <https://doi.org/10.1098/rspa.1948.0037>, 1948.
- Pillco, Z. R. and Bengtsson, L.: Long-term and extreme water levels variations of the shallow Lake Poopó, Bolivia, *Hydrolog. Sci. J.*, 51, 98–114, <https://doi.org/10.1623/hysj.51.1.98>, 2006.
- Pillco, Z. R. and Bengtsson, L.: *Doctoral theses: Response of Bolivian Altiplano Lakes to Seasonal and Annual Climate Variation*, Lund University Publications, 1, 107 pp., 2007.
- Pouyaud, B.: Lago Titicaca, Programa estudios TDPS: misión d'évaluation sur la prise en compte de l'évaporation, GIE Hydro Consult International, GIE ORSTOM-EDF, 1993.
- Revollo, M. M.: Management issues in the Lake Titicaca and Lake Poopó System: Importance of development a water budget, *Lakes and Reservoirs: Research and Management*, 6, 225–229, <https://doi.org/10.1046/j.1440-1770.2001.00151.x>, 2001.
- Richerson, P. J., Widmer, C., and Kittel, T.: *The Limnology of the Lake Titicaca (Perú-Bolivia), a Large, High Altitude Tropical Lake*, Institute of Ecology Publication, 14, 82 pp., 1977.
- Roche, M. A., Bouges, J., and Mattos, R.: Climatology and hydrology of the Lake Titicaca basin, in: *Lake Titicaca a Synthesis of Limnological Knowledge*, edited by: Dejoux, C. and Iltis, A., Kluwer Academic Publisher, 63–88, 1992.
- Satgé, F., Espinoza, R., Pillco, Z. R., Roig, H., Timouk, F., Molina, J., Garnier, J., Calmant, S., Seyler, F., and Bonnet, M.-P.: Role of climate variability and human activity on Poopó Lake droughts between 1990 and 2015 assessed using Remote Sensing Data, *Remote Sens.*, 9, 1–17, <https://doi.org/10.3390/rs9030218>, 2017.
- Singh, V. P. and Xu, C.-Y.: Sensitivity of mass transfer-based evaporation equations to errors in daily and monthly input data, *Hydrolog. Process.*, 11, 1465–1473, 1997.
- Talbi, A., Coudrain, A., Ribstein, P., and Pouyaud, B.: Calcul de la pluie sur le bassin-versant du lac Titicaca pendant l'Holocène, *Comptes Rendus de l'Accadémie des Sciences, Paris, Sciences de la Terre et des Planètes*, 329, 197–203, 1999.
- Taylor, M. and Aquize, E. A.: Climatological energy Budget of the Lake Titicaca (Peru/Bolivia), *Internationale Vereinigung für Theoretische und Angewandte Limnologie: Verhandlungen*, 22, 1246–1251, <https://doi.org/10.1080/03680770.1983.11897478>, 1984.
- TDPS: *Climatología del sistema de los lagos Titicaca, Desaguadero, Poopó y Salares Coipasa y Uyuni (TDPS)*, Comisión de comunidades de europeas, Repúblicas del Perú y Bolivia, convenios ALA/86/03 y ALA/87/23, LP, Bolivia, 1993.
- UNEP: *Diagnóstico Ambiental del Sistema Titicaca-Desaguadero-Poopó-Salar de Coipasa (TDPS) Bolivia-Perú*, División de Aguas Continentales del Programa de las Naciones Unidas para el Medio Ambiente y Autoridad Binacional del Sistema TDPS, Washington, DC, USA, p. 192, 1996.
- Vuille, M., Radley, R. S., and Keiming, F.: Interannual climate variability in the Central Andes and its relation to tropical Pacific and Atlantic forcing, *J. Geophys. Res.-Atmos.*, 105, 12447–12460, <https://doi.org/10.1029/2000JD900134>, 2000.
- Wirrmann, D.: Morphology and bathymetry, in: *Lake Titicaca, In a synthesis of Limnological Knowledge*, edited by: Dejoux, C. and Iltis, A., *Monographiae Biologicae*, 68, Kluwer Academic Publisher, Dordrecht, 16–22, 1992.