

Figure S1: pH variation of SRFA/DTAC suspensions as a function of DTAC concentration.

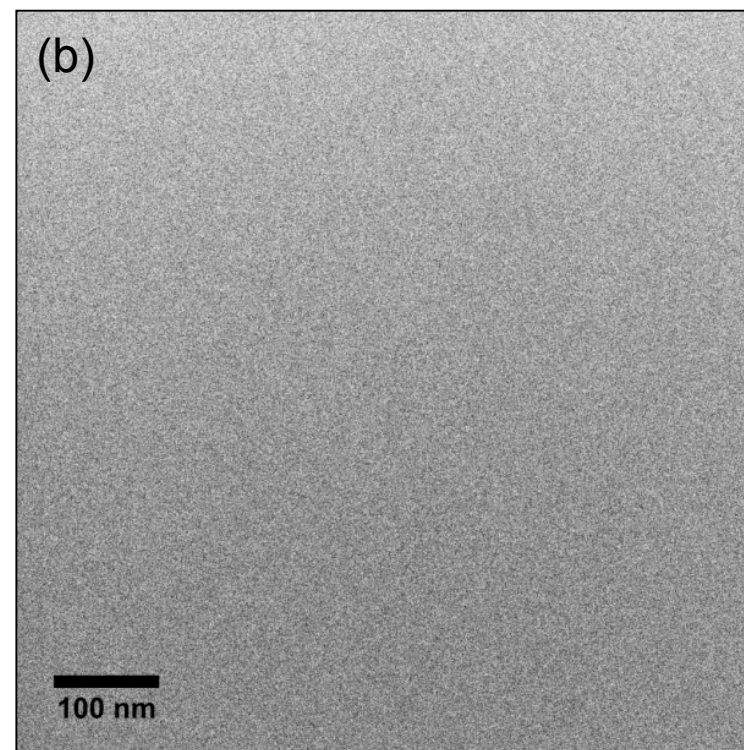
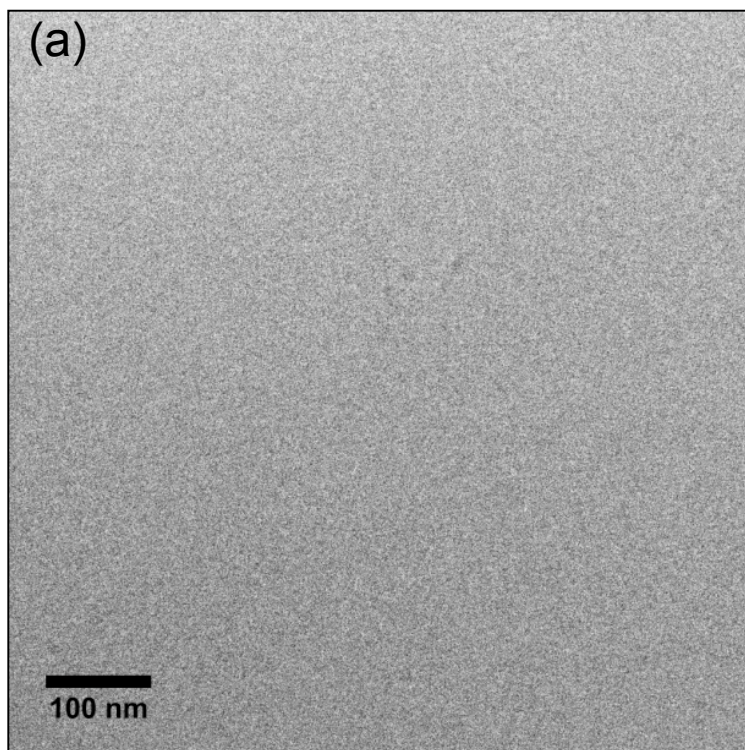


Figure S2: CryoTEM micrographs of (a) DTAC stock solution (10g/L or 37.9 mmol/L); (b) DTAC solution at a concentration of $7.6 \cdot 10^{-3}$ mmol/L, i.e. the concentration at which fulvic-rich vesicles are formed.

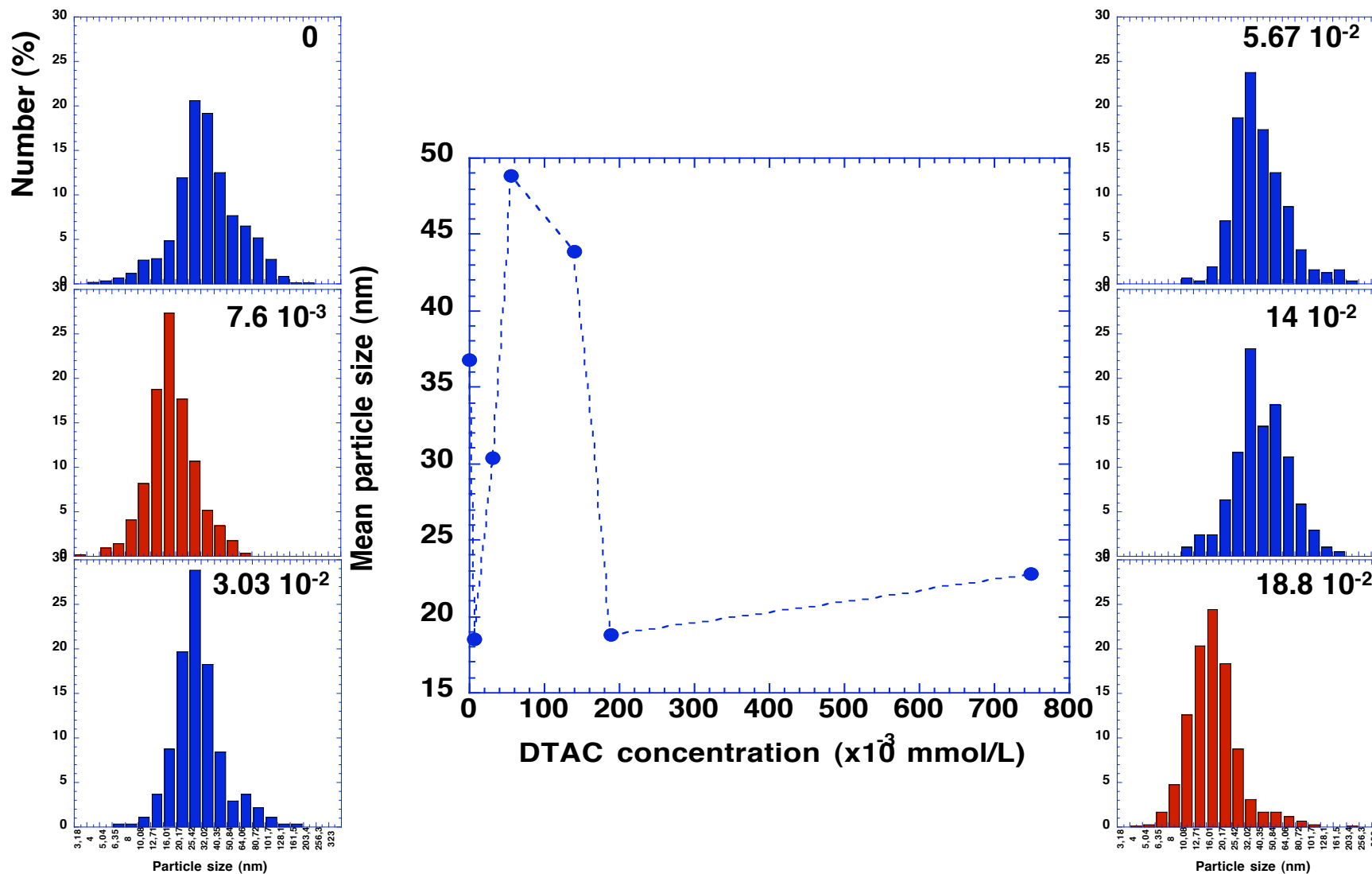


Figure S3: Size histograms of molecular structures viewed by cryoTEM and evolution of mean particle size with DTAC concentration. The DTAC concentration is indicated in the histograms in mmol/L. The histograms in red are associated with the presence of vesicles.

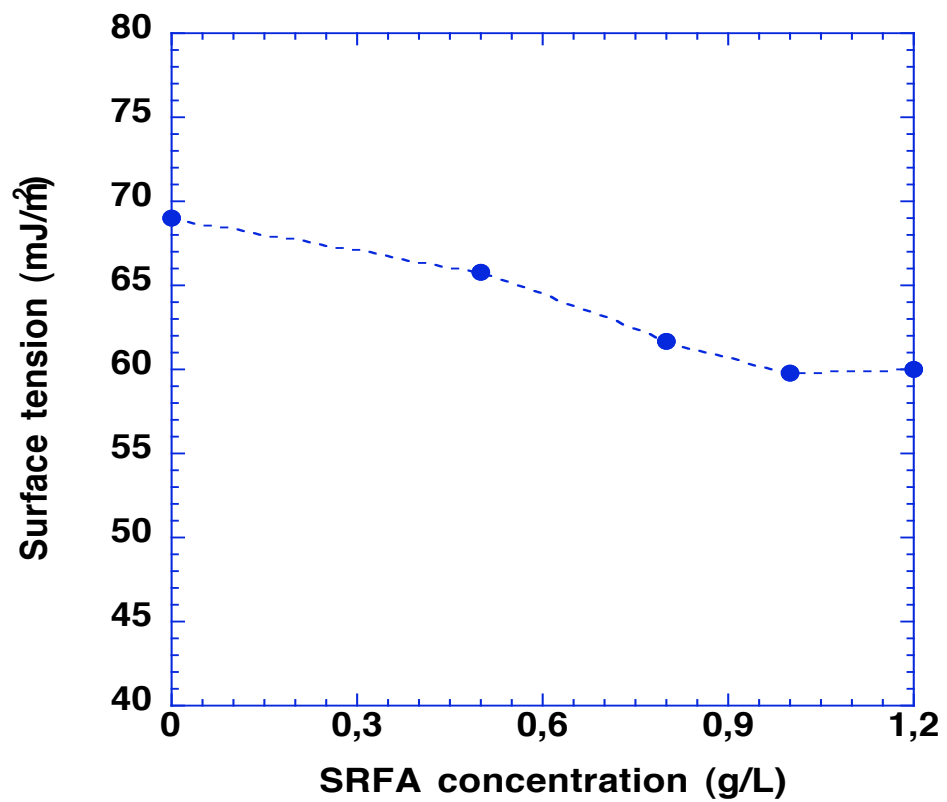


Figure S4: Surface tension of SRFA suspensions as a function of SRFA concentration