

Figure 1: Typical turbidity curves of SRFA/DTAC suspensions as a function of time for various DTAC additions; SRFA concentration = 20 mg/L.

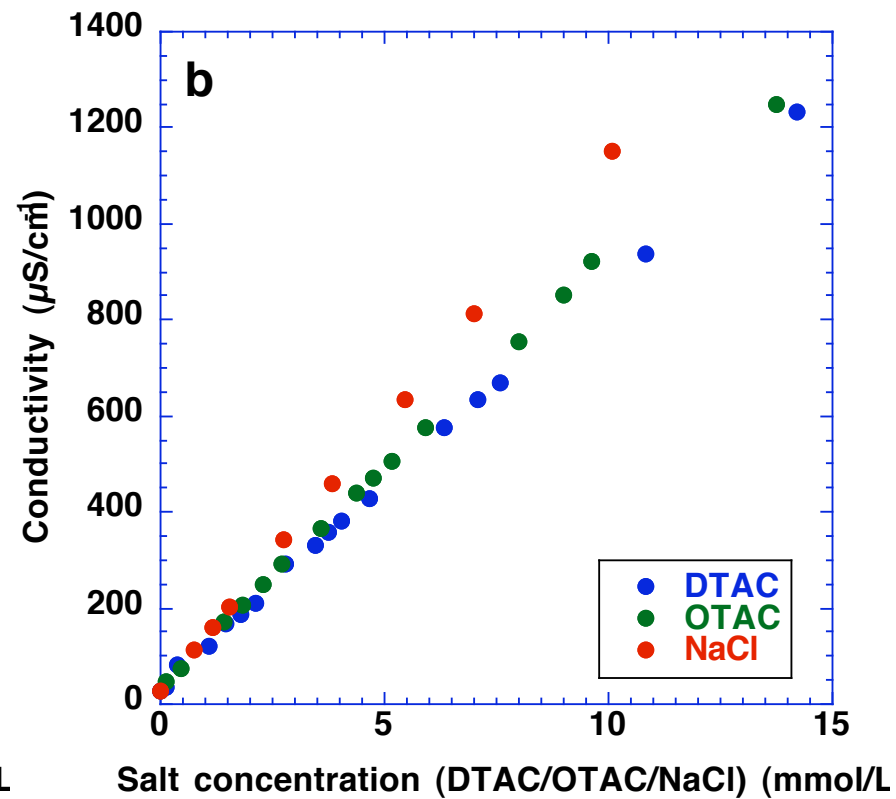
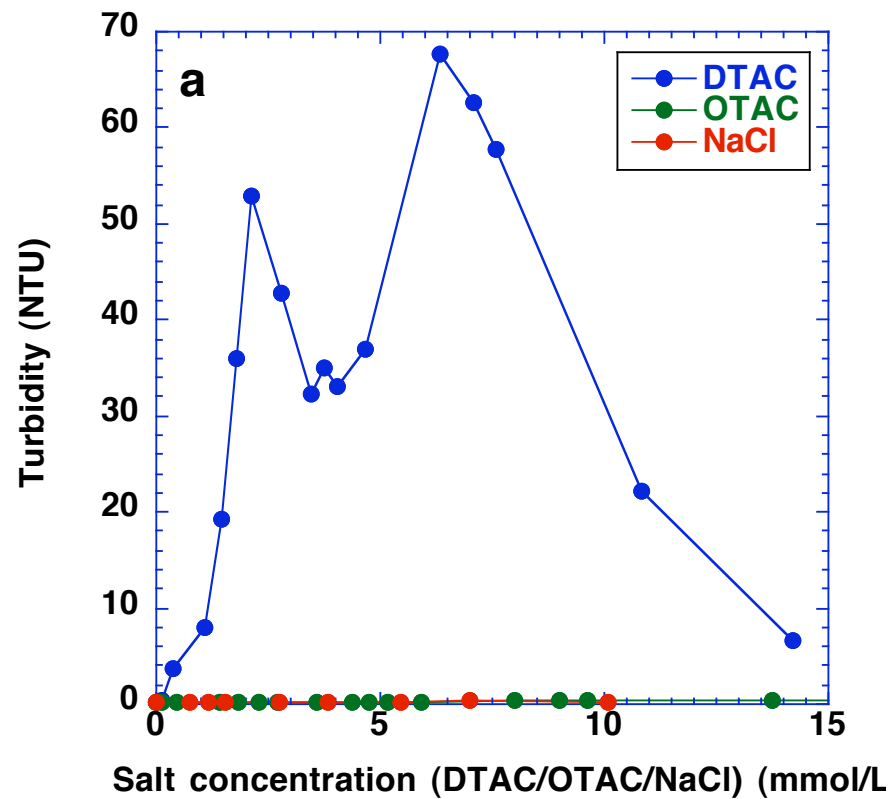


Figure 2: Interaction of SRFA with DTAC (•), OTAC (•), and NaCl (•) as a function of salt concentration: (a) Turbidity curves; (b) Conductivity curves.

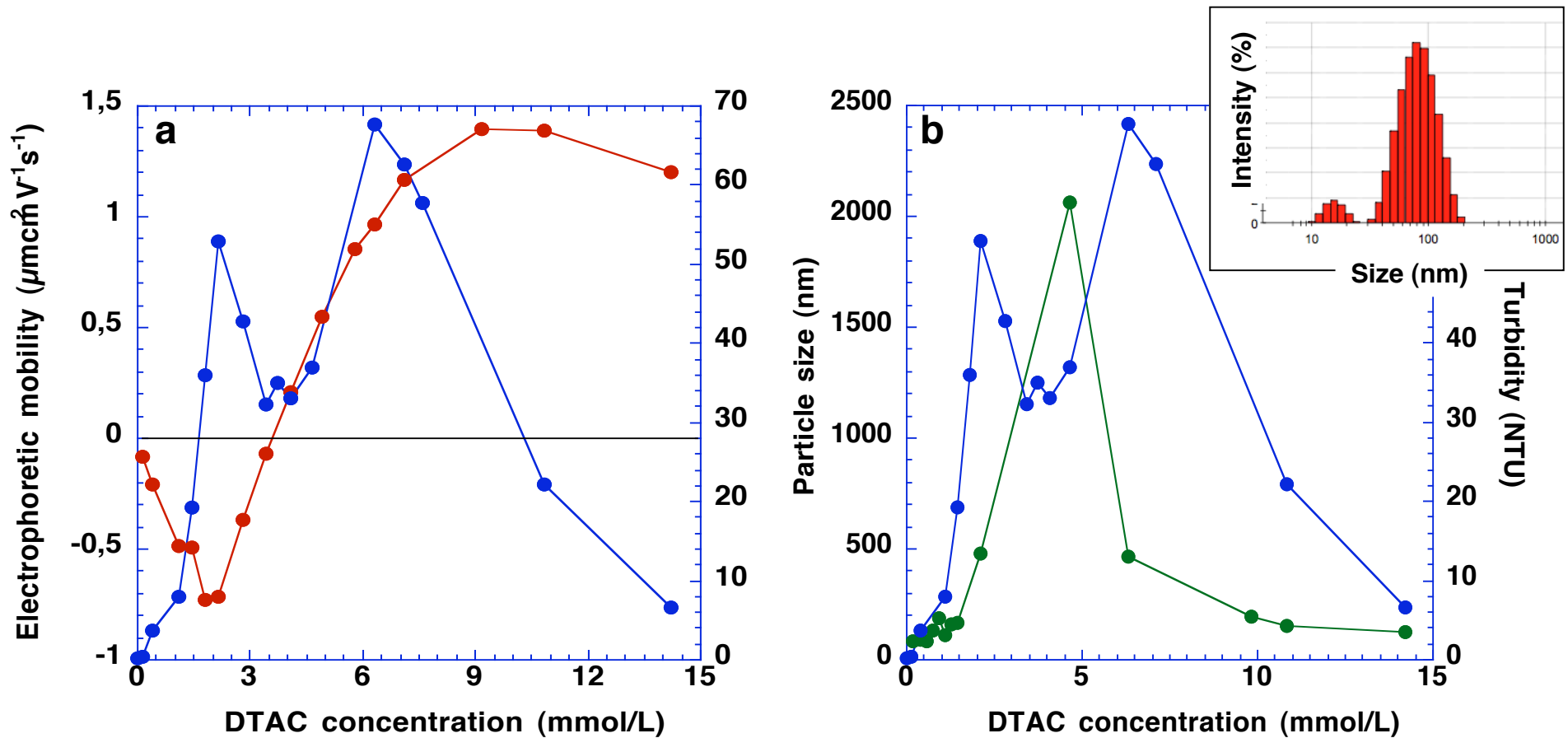


Figure 3: (a) Electrophoretic mobility of SRFA/DTAC complexes versus DTAC concentration (●). (b) Number-average particle size of SRFA/DTAC complexes (DLS) versus DTAC concentration (●) for a SRFA concentration of 20 mg/L. The turbidity curve (●) is superimposed for comparison. The inset shows the bimodal size distribution obtained for a DTAC addition of 0.19 mmol/L.

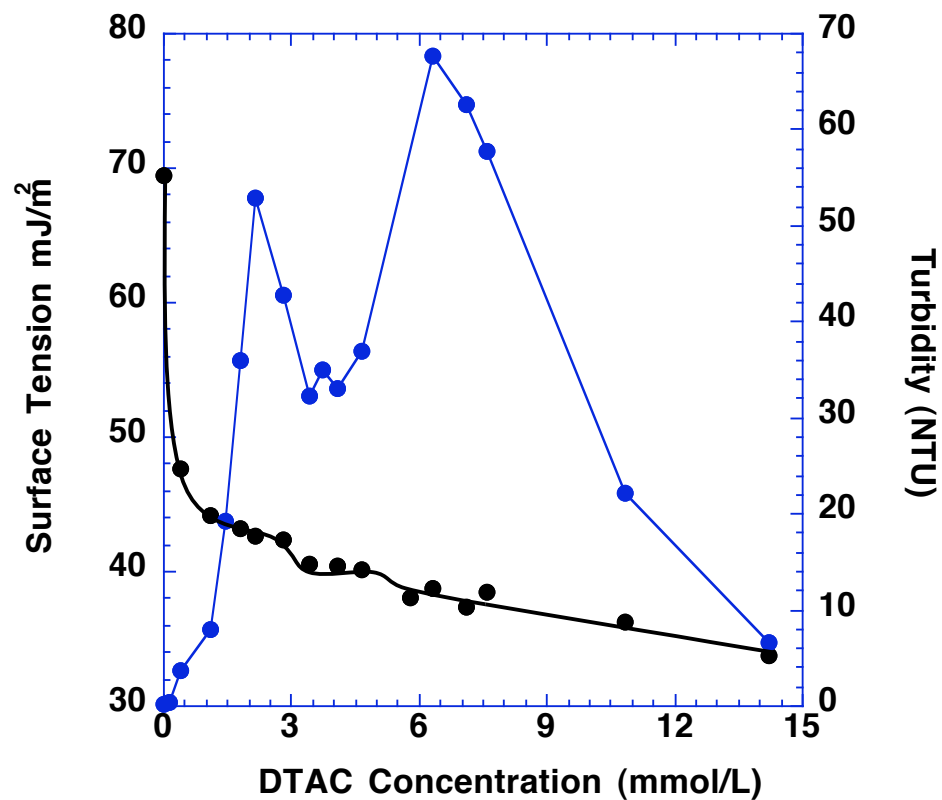


Figure 4: Surface tension of SRFA/DTAC suspensions versus DTAC concentration (●) for a SRFA concentration of 20 mg/L. The turbidity curve (●) is shown in order to position the main variations of surface tension.

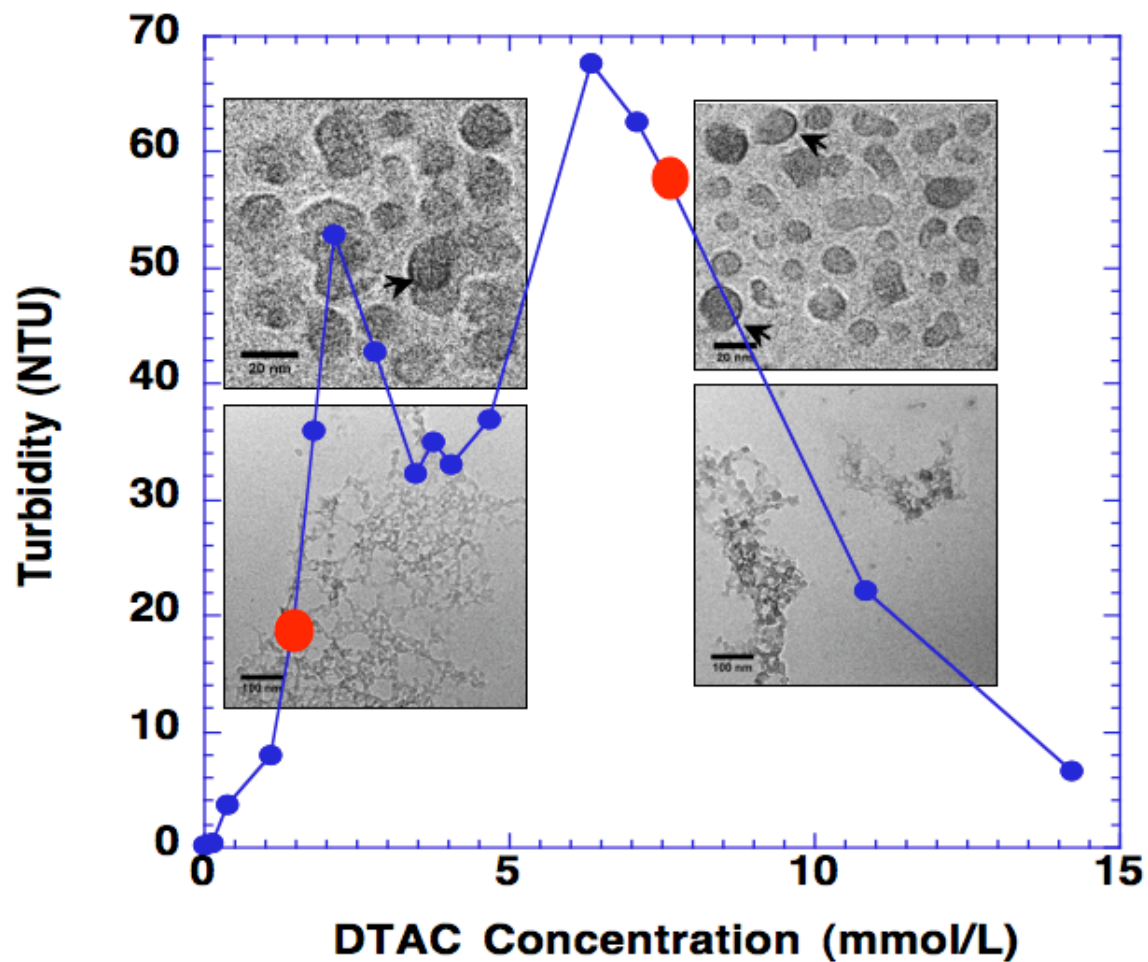


Figure 5: CryoTEM micrographs of SRFA in presence of DTAC concentrations of 1.8 mmol/L and 7.58 mmol/L (red dots) showing spongy networks and vesicles. The arrows indicate the walls of the vesicles. SRFA concentration = 20 mg/L.

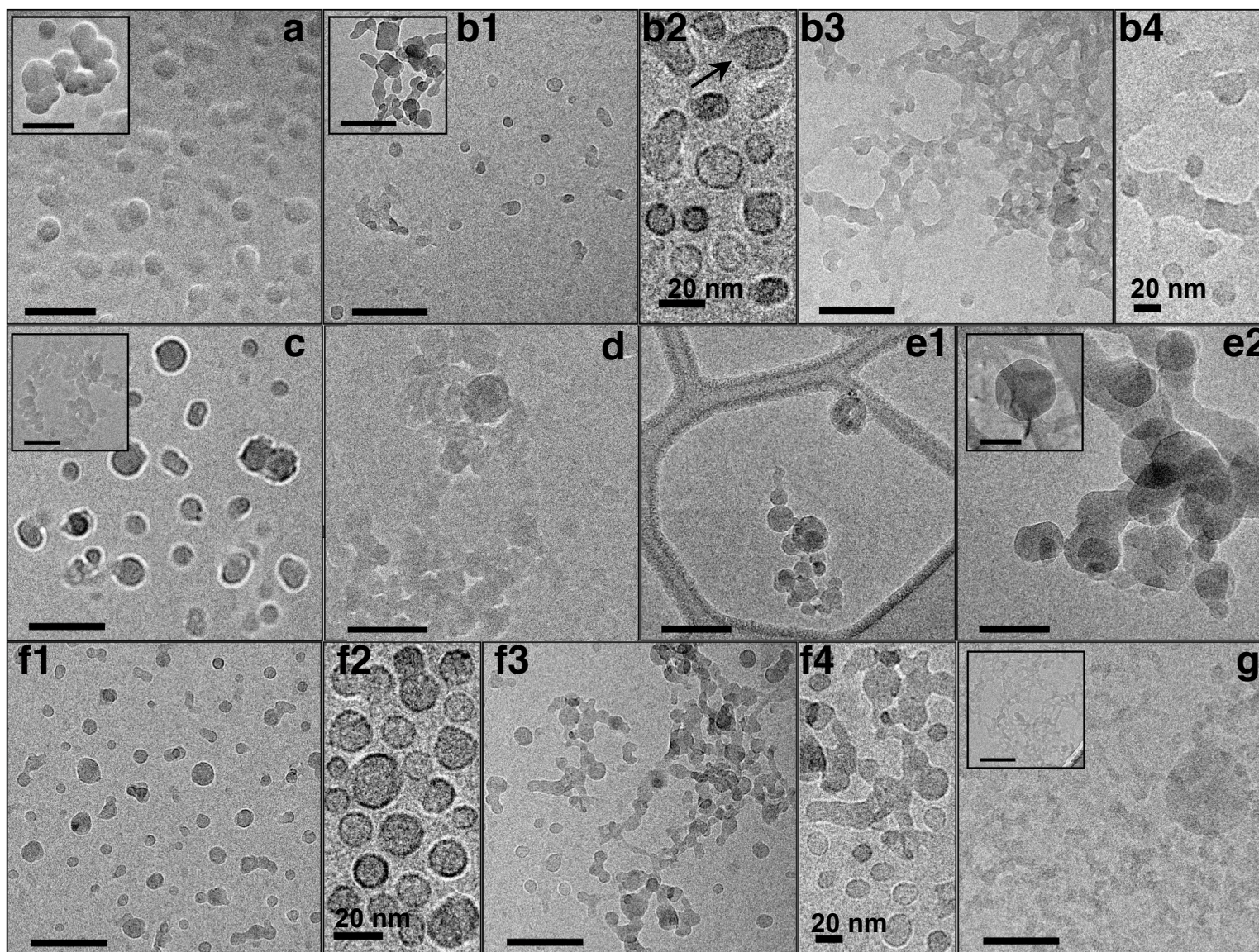


Figure 6: CryoTEM micrographs of SRFA/DTAC molecular structures; all scale bars equal 100 nm unless otherwise indicated. (a) [DTAC] = 0 mmol/L. (b1-4) [DTAC] = $7.6 \cdot 10^{-3}$ mmol/L; the arrow indicates an open vesicle. (c) [DTAC] = $30.2 \cdot 10^{-3}$ mmol/L. (d) [DTAC] = $56.7 \cdot 10^{-3}$ mmol/L. (e1-2) [DTAC] = $75.6 \cdot 10^{-3}$ mmol/L. (f1-4) [DTAC] = $18.8 \cdot 10^{-2}$ mmol/L. (g) [DTAC] = $74.3 \cdot 10^{-2}$ mmol/L.