



**HAL**  
open science

# Green's functions with oblique Neumann boundary conditions in a wedge

Sandro Franceschi

► **To cite this version:**

Sandro Franceschi. Green's functions with oblique Neumann boundary conditions in a wedge. 2019.  
hal-02123641v1

**HAL Id: hal-02123641**

**<https://hal.science/hal-02123641v1>**

Preprint submitted on 8 May 2019 (v1), last revised 24 Sep 2020 (v2)

**HAL** is a multi-disciplinary open access archive for the deposit and dissemination of scientific research documents, whether they are published or not. The documents may come from teaching and research institutions in France or abroad, or from public or private research centers.

L'archive ouverte pluridisciplinaire **HAL**, est destinée au dépôt et à la diffusion de documents scientifiques de niveau recherche, publiés ou non, émanant des établissements d'enseignement et de recherche français ou étrangers, des laboratoires publics ou privés.

# GREEN'S FUNCTIONS WITH OBLIQUE NEUMANN BOUNDARY CONDITIONS IN A WEDGE

S. FRANCESCHI

**ABSTRACT.** We study semi-martingale obliquely reflected Brownian motion (SRBM) with drift in a wedge of the plane in the transient case. Our main result determines a general explicit integral expression for the Laplace transform of Green's functions of this process. To that purpose we establish a new kernel functional equation connecting Laplace transforms of Green's functions inside the wedge and on its edges. This is reminiscent of the recurrent case where a functional equation derives from the "Basic adjoint relationship" which characterizes the stationary distribution. This equation leads us to a non-homogeneous Carleman boundary value problem. Its resolution provides a formula for the Laplace transform function in terms of contour integrals and a conformal mapping.

## 1. INTRODUCTION

### 1.1. Overview.

*Main goal.* In this article we consider  $Z_t$  an obliquely reflected Brownian motion with drift in  $\mathbb{R}_+^2$  starting from  $x$  and with transition function  $P_t$ . We will focus on the quadrant case because thanks to a simple linear transform it is easy to extend all the results to any wedge, see [28, Appendix A]. Such a process behaves like a Brownian motion of covariance  $\Sigma$  with drift  $\mu$  inside the quarter plane and reflects instantaneously in a constant direction  $R^i$  for  $i = 1, 2$  on each edge, see Figure 1 and Proposition 1 for more details. We are interested in the case where this process is transient, that is when the parameters make the process go to infinity almost surely, see Section 2.2.

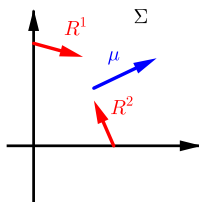


FIGURE 1. Reflection vectors and drift

The main goal of this article is to study  $G$  the Green measure (or the potential kernel) of  $Z_t$ , namely

$$G(x, A) := \mathbb{E}_x \left[ \int_0^\infty \mathbf{1}_A(Z_t) dt \right] = \int_0^\infty P_t(x, A) dt$$

which represents the mean time spent by the process in some measurable set  $A$  of the quadrant. Let us remark that if  $A$  is bounded and if  $Z_t$  is transient then  $G(x, A)$  is finite. The density of

---

*Key words and phrases.* Green's function; Oblique Neumann boundary condition; Obliquely reflected Brownian motion in a wedge; SRBM; Laplace transform; Conformal mapping; Carleman boundary value problem.

Version of May 10, 2019

the measure  $G$  compared to the Lebesgue measure is called the Green's function and is equal to

$$g(x, \cdot) := \int_0^\infty p_t(x, \cdot) dt,$$

if we assume that  $p_t$  is a transition density for  $Z_t$ . The kernel  $G$  defines a potential operator

$$Gf(x) := \mathbb{E}_x \left[ \int_0^\infty f(Z_t) dt \right] = \int_{\mathbb{R}_+^2} f(y) g(x, y) dy,$$

for every positive measurable function  $f$ . We define  $H_1$  and  $H_2$  the boundary Green measures on the edges such that for  $i = 1, 2$ ,

$$H_i(x, A) := \mathbb{E}_x \left[ \int_0^\infty \mathbf{1}_A(Z_t) dL_t^i \right]$$

where we integrate with respect to  $L_t^i$ , the local time of the process on the edge  $z_i = 0$ . The support of  $H_1$  lies on the ordinate and the one of  $H_2$  lies on the abscissa. We can say that  $H_i(x, A)$  represents the mean local time spent on the corresponding edge. When it exists, the density of the measure  $H_i$  compared to the Lebesgue measure is denoted  $h_i$  and the boundary potential kernel is given by

$$H_i f(x) := \mathbb{E}_x \left[ \int_0^\infty f(Z_t) dL_t^i \right] = \int_{\mathbb{R}_+^2} f(y) h_i(x, y) dy.$$

In this article we determine an explicit formula for  $\psi^x$  and  $\psi_i^x$  the Laplace transforms (which can be seen as generating functions in the continuous framework) of  $g$  and  $h_i$ , defined by

$$\psi^x(\theta) := \mathbb{E}_x \left[ \int_0^\infty e^{\theta \cdot Z_t} dt \right] \quad \text{and} \quad \psi_i^x(\theta) := \mathbb{E}_x \left[ \int_0^\infty e^{\theta \cdot Z_t} dL_t^i \right] \quad (1)$$

where  $\theta = (\theta_1, \theta_2) \in \mathbb{C}^2$ . Thereafter we will often omit to write the  $x$ . Furthermore we notice that the functions  $\psi_i$  depend on only one variable. We will then denote them by  $\psi(\theta)$ ,  $\psi_1(\theta_2)$  and  $\psi_2(\theta_1)$ .

*Context.* Obliquely reflected Brownian motion in the quadrant and in orthants of any dimensions was introduced and extensively studied in the eighties by Harrison, Reiman, Varadhan and Williams [30, 31, 51, 53, 52]. The initial motivation for the study of this kind of processes was because it serves as an approximation of large queuing networks as we can see in Foschini [25], Reiman [47], Foddy [24], Baccelli and Fayolle [3] or Harrison and Williams [33]. Recurrence or transience in two dimensions, which is an important aspect for us, was studied by Williams [53], Dai [14], Hobson and Rogers [35]. In higher dimensions the problem is more complex, see for example Chen [11], Bramson et al. [8], Bramson [7], Dai and Harrison [15]. Otherwise the intertwining relations of obliquely reflecting Brownian motion have been studied in Dubédat [20] and Kager [36], its Lyapunov functions in Dupuis and Williams [21], its cone points in Le Gall [40] and its existence in non-smooth planar domains and its links with complex and harmonic analysis in Burdzy et al. [10]. Such a process is also related to competing Brownian particle systems as in Sarantsev [49], Bruggeman and Sarantsev [9]. Finally some other related stochastic processes have been studied too as two-dimensional oblique Bessel processes in Lépingle [41] and two-dimensional obliquely sticky Brownian motion in Dai and Zhao [13].

*Green's functions and invariant measures.* Green's functions and invariant measures are two similar concepts, the first taking meaning in the transient case and the second in the recurrent case. Indeed, in the transient case the process spends a finite time in a bounded set while in the recurrent case it spends an infinite time in it. Thus the Green measure may be interpreted as the average time spent in some set while ergodic theorems say that the invariant measure is the average *proportion* of time spent in some set.

In the discrete setting, Green's functions of random walks in the quadrant have been studied in several articles, as in the reflecting case in Kourkova and Malyshev [39] or in the absorbed case

in Kourkova and Raschel [37]. To our knowledge it seems that in the continuous setting, Green's functions of reflected Brownian motion in cones has not been studied yet (except in dimension one, see Chen [12]).

On the other hand, the invariant measure of this kind of processes has been deeply studied in the literature: the asymptotics of the stationary distribution is the subject of many articles as Harrison and Hasenbein [32], Dai and Miyazawa [17, 18], Franceschi and Kourkova [26], Sarantsev [50], numerical methods to compute the stationary distribution have been developed in Dai [14], Dai and Harrison [16] and explicit expressions for the stationary distribution are found in some particular cases in Foddy [24], Foschini [25], Baccelli and Fayolle [3], Harrison and Williams [34], Dieker and Moriarty [19], Franceschi and Raschel [27], Bousquet-Mélou et al. [5] and in the general case in Franceschi and Raschel [28].

*Oblique Neumann boundary problem.* Green's functions and invariant measures of Markov processes are central in potential theory and in ergodic theorems for additive functionals. In particular they give a probabilistic interpretation to the solution of some partial differential equations. Appendix A illustrates this. Our case is especially complicated because we consider a non-smooth unbounded domain and that our derivative boundary conditions are oblique.

Let us consider  $Z_t$  an obliquely reflected Brownian motion of covariance  $\Sigma$ , reflection vectors  $R^1$  and  $R^2$  and drift  $\mu$ . Its generator inside the quarter plane  $\mathcal{L}$  and its dual generator  $\mathcal{L}^*$  are equals to

$$\mathcal{L}f = \frac{1}{2}\nabla \cdot \Sigma \nabla + \mu \cdot \nabla \quad \text{and} \quad \mathcal{L}^*f = \frac{1}{2}\nabla \cdot \Sigma \nabla - \mu \cdot \nabla. \quad (2)$$

Harrison and Reiman [30, (8.2) and (8.3)] derive (informally) the backward and the forward equations (with boundary and initial conditions) for  $p_t(x, y)$ , the transition density of the process. The forward equation (or Fokker-Planck equation) may be written as

$$\begin{cases} \mathcal{L}_y^* p_t(x, y) = \partial_t p_t(x, y), \\ \partial_{R_i^*} p_t(x, y) - 2\mu_i p_t(x, y) = 0 \text{ if } y_i = 0, \\ p_0(x, \cdot) = \delta_x, \end{cases}$$

where

$$R^* = 2\Sigma - R \operatorname{diag}(R)^{-1} \operatorname{diag}(\Sigma)$$

and denoting  $R_i^*$  its  $i$ th column and  $\partial_{R_i^*} = R_i^* \cdot \nabla_y$  the derivative along  $R_i^*$  on the boundary. (Be careful reading [30], the notations are not the same because they use row vectors while we use column vectors.) Letting  $t$  going to infinity in the forward equation, Harrison and Reiman conclude that, in the positive recurrent case, the stationary distribution of density  $\pi$  satisfies the following steady-state equation [30, (8.5)]

$$\begin{cases} \mathcal{L}^* \pi = 0, \\ \partial_{R_i^*} \pi - 2\mu_i \pi = 0 \text{ if } y_i = 0. \end{cases}$$

In the transient case, integrating the forward equation in time from 0 to infinity suggests that the Green's function  $g$  satisfies the following Robin type equation

$$\begin{cases} \mathcal{L}_y^* g(x, \cdot) = -\delta_x, \\ \partial_{R_i^*} g(x, \cdot) - 2\mu_i g(x, \cdot) = 0 \text{ if } y_i = 0. \end{cases} \quad (3)$$

A similar equation holds in dimension one, see (32). The Green's function  $g$  of the obliquely reflected Brownian motion in the quadrant is then a fundamental solution of the dual operator  $\mathcal{L}^*$ . Together with the boundary Green's functions  $h_i$  they should allow to solve the following oblique Neumann boundary problem

$$\begin{cases} \mathcal{L}u = -f & \text{in } \mathbb{R}_+^2, \\ \partial_{R_i} u = \varphi_i & \text{if } y_i = 0, \end{cases}$$

where  $\partial_{R_i} = R_i \cdot \nabla_y$  is the derivative along  $R_i$ . If a solution  $u$  exists, it should satisfy

$$u = Gf + H_1\varphi_1 + H_2\varphi_2.$$

One may see Appendix A to better understand this thought.

## 1.2. Main results and strategy.

*Functional equation.* To find  $\psi$  and  $\psi_i$  the Laplace transforms of the Green's functions, we will establish in Proposition 5 a new kernel functional equation connecting what happens inside the quadrant and on its boundaries, namely

$$-\gamma(\theta)\psi(\theta) = \gamma_1(\theta)\psi_1(\theta_2) + \gamma_2(\theta)\psi_2(\theta_1) + e^{\theta \cdot x} \quad (4)$$

where  $x$  is the starting point and  $\gamma$  and  $\gamma_i$  are some polynomials given in equation (9). To our knowledge this formula does not appear yet in the literature. Such an equation is reminiscent of the balance equation satisfied by the Laplace transform of the invariant measure in the recurrent case which derives from the ‘‘Basic adjoint relationship’’, see Dai and Miyazawa [17, (2.3)]. The additional term  $e^{\theta \cdot x}$  depending on the starting point makes this equation differ from the one of the recurrent case. It reminds also of the several kernel equations obtained in the discrete setting in order to study random walks and count walks in the quadrant [23, 38].

*Analytic approach.* In the seventies, Malyshev [43], Fayolle and Iasnogorodski [22] introduced an analytic approach to solve such functional equations. This method is presented in the famous book of Fayolle et al. [23]. Since then, it has been used a lot in the discrete setting in order to solve many problems as counting walks, studying Martin boundaries, determining invariant measures or Green's functions, see Kourkova and Malyshev [39], Kourkova and Raschel [37, 38], Bousquet-Mélou and Mishna [6], Bernardi et al. [4]. This approach has also been used in the continuous setting in order to study stationary distributions in a few articles as in Foddy [24], Foschini [25], Baccelli and Fayolle [3], Franceschi and Raschel [28]. However, to our knowledge it is the first time that this method is used to find Green's functions in the continuous case. To obtain an explicit expression of the Laplace transforms using this analytic approach we will go through the following steps:

- (i) Find a functional equation, see Section 3.1;
- (ii) Study the kernel (and its related Riemann surface) and extend meromorphically the Laplace transforms, see Sections 3.2 and 3.3;
- (iii) Deduce from the functional equation a boundary value problem (BVP), see Section 4.2;
- (iv) Find some conformal gluing function and solve the BVP, see Sections 4.3 and 4.5.

For some analytic steps, our strategy of proof is similar to the one used in [28] to determine the stationary distribution. In some places, the technical details will be identical to [28] and [3], especially when it concerns the kernel and some linked factors. But, being in the transient case, the probabilistic study differs from [28] and leads to a different functional equation and to a more complicated boundary value problem whose analytic resolution is more difficult.

*Boundary value problem.* In Lemma 8 we establish a Carleman boundary value problem satisfied by the Laplace transform  $\psi_1$ . For some functions  $G$  and  $g$  defined in (19) and (20) and some hyperbola  $\mathcal{R}$  defined in (17) which depend on the parameters  $(\mu, \Sigma, R)$  we obtain the boundary condition (21):

$$\psi_1(\overline{\theta_2}) = G(\theta_2)\psi_1(\theta_2) + g(\theta_2), \quad \forall \theta_2 \in \mathcal{R}.$$

This is a particularly complicated problem to solve because it is doubly non-homogeneous due to the function  $G$  but also to  $g$  which comes from the term  $e^{\theta \cdot z_0}$  in the functional equation (4). The function  $g$  makes the BVP differ from the one obtained in the recurrent case for the Laplace transform of the stationary distribution [28].

*Explicit expression.* The resolution of such a BVP is technical and uses the general theory of BVP. In order to make the paper self-contained, Appendix B briefly presents this theory. The solutions can be expressed in terms of Cauchy integral and some conformal mapping  $w$  defined in (22). Our main result is an integral formula for the Laplace transform  $\psi_1$  precisely stated in Theorem 11. Let us give now the shape of the solution. We have

$$\psi_1(\theta_2) = \frac{-Y(w(\theta_2))}{2i\pi} \int_{\mathcal{R}^-} \frac{g(t)}{Y^+(w(t))} \left( \frac{w'(t)}{w(t) - w(\theta_2)} + \chi \frac{w'(t)}{w(t)} \right) dt$$

where

$$Y(w(\theta_2)) = w(\theta_2)^\chi \exp \left( \frac{1}{2i\pi} \int_{\mathcal{R}^-} \log(G(s)) \left( \frac{w'(s)}{w(s) - w(\theta_2)} - \frac{w'(s)}{w(s)} \right) ds \right),$$

$\chi = 0$  or  $1$  and  $Y^+$  is the limit of  $Y$  on  $\mathcal{R}$ . In the same way there is a similar formula for  $\varphi_2$ , and then the functional equation (4) gives an explicit formula for the Laplace transform  $\varphi$ . The invariant measures are obtained by taking the inverse Laplace transforms.

**1.3. Perspectives.** Developing the analytic approach, it would be certainly be possible to study further the Green's functions and the obliquely reflected Brownian motion in wedges. Here are some research topic perspectives:

- Study the algebraic nature of the Green's function: as in the discrete models it would require to introduce the group related to the process and analyze further the structure of the BVP in studying the existence of multiplicative and additive decoupling functions, see Section 4.6 and Malyshev [43], Bousquet-Mélou and Mishna [6], Bernardi et al. [4], Bousquet-Mélou et al. [5];
- Determine the asymptotics of the Green's function, the Martin boundary and the corresponding harmonic functions: to do this we should study the singularities and inverse the Laplace transforms in order to use transfer lemmas and the saddle point method on the Riemann surface, see Kourkova and Malyshev [39], Kourkova and Raschel [37], Franceschi and Kourkova [26], Raschel [45], Raschel and Tarrago [46];
- Give an explicit expression for the transition function: to do that, we could try to find a functional equation satisfied by the resolvent of the process, which would contain one more variable, and seek to solve it.

We leave these questions for future works. Furthermore, even if there are some attempts, extending the analytic approach to higher dimensions remains an open question.

#### 1.4. Structure of the paper.

- Section 2 presents the process we are studying and focuses on the conditions for the process to be transient.
- Section 3 establishes the new functional equation which is the starting point of our analytic study. The kernel is studied and the Laplace transform is continued on some domain.
- Section 4 establishes and solves the boundary value problem satisfied by the Laplace transform  $\psi_1$ . The main result, which is the explicit expression of  $\psi_1$ , is stated in Theorem 11.
- Appendix A presents in a brief way the potential theory which links Green's functions and the partial differential equations.
- Appendix B presents the general theory of boundary value problems which is used in Section 4.
- Appendix C studies the Green's functions of reflected Brownian motion in dimension one.

**Acknowledgment.** I would like to express my gratitude to Irina Kourkova and Kilian Raschel for introducing me to this subject and this theory. This research was partially supported by the ERC starting grant - 2018/2022 - COMBINEPIC - 759702.

## 2. TRANSIENT SRBM IN THE QUADRANT

2.1. **Definition.** Let

$$\Sigma = \begin{pmatrix} \sigma_{11} & \sigma_{12} \\ \sigma_{12} & \sigma_{22} \end{pmatrix} \in \mathbb{R}^{2 \times 2}, \quad \mu = \begin{pmatrix} \mu_1 \\ \mu_2 \end{pmatrix} \in \mathbb{R}^2, \quad R = (R_1, R_2) = \begin{pmatrix} 1 & r_{12} \\ r_{21} & 1 \end{pmatrix} \in \mathbb{R}^{2 \times 2}$$

respectively be a positive-definite covariance matrix, a drift and a “reflection matrix”. The matrix  $R$  has two reflection vectors giving the reflection direction  $R_1$  along the  $y$ -axis and  $R_2$  along the  $x$ -axis, see Figure 1. We will define the obliquely reflected Brownian motion in the quadrant in the case where the process is a semi-martingale, see Williams [52]. Such a process is also called *semimartingale reflected Brownian motion* (SRBM).

**Proposition 1** (Existence and uniqueness). *Let us define  $Z_t$  a SRBM with drift in the quarter plane  $\mathbb{R}_+^2$  associated to  $(\Sigma, \mu, R)$  as the semi-martingale such that for  $t \in \mathbb{R}_+$  we have*

$$Z_t = x + W_t + \mu t + RL_t \in \mathbb{R}_+^2,$$

where  $x$  is the starting point,  $W_t$  is a planar Brownian motion starting from 0 and of covariance  $\Sigma$  and for  $i = 1, 2$  the coordinate  $L_t^i$  is a continuous non-decreasing process which increases only when  $Z_i = 0$ , that is when the process reach the boundary ( $\int_{\{t: Z_i > 0\}} dL_t^i = 0$ ). The process  $Z_t$  exists if and only if

$$\det R > 0 \quad \text{or} \quad (r_{12} > 0, \quad r_{21} > 0). \quad (5)$$

In this case the process is unique in law and defines a Feller continuous strong Markov process.

The process  $L_t$  represents the local time on the boundaries, more specifically its first coordinate  $L_t^1$  is the local time on the ordinate and the second coordinate  $L_t^2$  the local time on the abscissa. The proof of existence and uniqueness can be found in the survey of Williams [54, Theorem 2.3] for orthants, it just remains to convert the conditions in dimension two. These conditions mean that the reflection vectors must not be too much inclined toward 0 for the process to exist. Otherwise the process will be trapped in the corner, see Figure 2. The limit condition is satisfied when the two vectors are opposite.

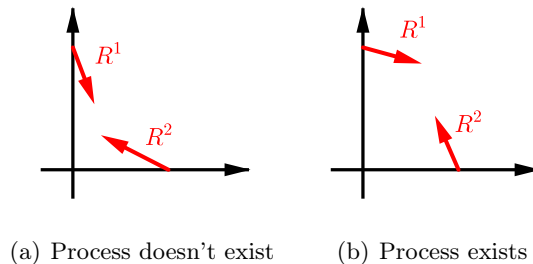


FIGURE 2. Existence conditions

2.2. **Recurrence and transience.** Markov processes have approximately two possible behaviours as explained in Revuz and Yor [48, p. 424]. Either they converge to infinity which is the transient case, or they come back at arbitrarily large times to some small sets which is the recurrent case. We present very briefly some results of the corresponding theory, for more details (in particular on topological issues) one can read the articles of Azéma et al. [1, 2].

Let  $X_t$  be a Feller continuous strong Markov process of state space  $E$ , a locally compact set with countable base. We say that the point  $x$  leads to  $y$  if for all neighbourhood  $V$  of  $y$  we have  $\mathbb{P}_x(\tau_V < \infty) > 0$  where  $\tau_V = \inf\{t > 0 : X_t \in V\}$ . The points  $x$  and  $y$  communicate if  $x$  leads to  $y$  and  $y$  leads to  $x$ , it is an equivalence relation. For  $x \in E$  we say that

- $x$  is recurrent if  $\mathbb{P}_x \left( \overline{\lim}_{t \rightarrow \infty} \mathbf{1}_U(X_t) = 1 \right) = 1$  for all  $U$  neighbourhoods of  $x$ ,

- $x$  is transient if  $\mathbb{P}_x \left( \overline{\lim}_{t \rightarrow \infty} \mathbf{1}_U(X_t) = 1 \right) = 0$  for all  $U$  neighbourhoods of  $x$ .

Each point is either recurrent or transient, see Azéma et al. [1, Theorem III 1.], and if two states communicate they have the same nature recurrent or transient. The process will be called recurrent/transient if each point is recurrent/transient. The next proposition may be found in Azéma et al. [1, Prop III 1.].

**Proposition 2** (Transience properties). *The following properties are equivalent*

- (1) every point is transient;
- (2)  $X_t$  goes to infinity when  $t \rightarrow \infty$  a.s.;
- (3) for all compact  $K$  of  $E$  and for all starting point  $x$  the Green's measure of  $K$  is finite:

$$G(x, K) = \mathbb{E}_x \left[ \int_0^\infty \mathbf{1}_K(X_t) dt \right] < \infty.$$

The main articles which study the recurrence and the transience of SRBM in wedges are Williams [53] with zero drift, Hobson and Rogers [35] with non-zero drift and the survey of Williams [54]. The process has only one equivalence class equal to the whole quadrant, see for example Williams [53, (4.1)]. The process will be recurrent if for each set  $V$  (of positive Lebesgue measure) and all starting point  $x$ ,  $\mathbb{P}_x(\tau_V < \infty) = 1$ , otherwise it will be transient. It will be called recurrent positive and will admit a stationary distribution if  $\mathbb{E}_x[\tau_V] < \infty$  and recurrent null if  $\mathbb{E}_x[\tau_V] = \infty$  for all  $x$  and  $V$ .

**Proposition 3** (Transience and recurrence). *Assume that the existence condition (5) is satisfied and note  $\mu_1^-$  and  $\mu_2^-$  the negative parts of the drift components. The process  $Z_t$  is transient if and only if*

$$\mu_1 + r_{12}\mu_2^- > 0 \text{ or } \mu_2 + r_{21}\mu_1^- > 0, \quad (6)$$

and recurrent if and only if

$$\mu_1 + r_{12}\mu_2^- \leq 0 \text{ and } \mu_2 + r_{21}\mu_1^- \leq 0. \quad (7)$$

In the latter case the process is recurrent positive and admit a unique stationary distribution if and only if  $\mu_1 + r_{12}\mu_2^- < 0$  and  $\mu_2 + r_{21}\mu_1^- < 0$ , and is recurrent null if and only if  $\mu_1 + r_{12}\mu_2^- = 0$  or  $\mu_2 + r_{21}\mu_1^- = 0$ .

This result may be found in [54, 35, 53]. In order to restrict the number of cases to handle, we will now assume that the drift has positive coordinates, that is

$$\mu_1 > 0 \text{ and } \mu_2 > 0. \quad (8)$$

In this case the process is then obviously transient and converges to infinity. In the other transient cases the process goes to infinity but only along one axis. These cases could be treated on the same way with additional technical issues. This assumption is the counterpart to the rather standard hypothesis made in the recurrent case (as in [19, 24, 25, 26, 28]) which takes  $\mu_1 < 0$  and  $\mu_2 < 0$ .

### 3. A NEW FUNCTIONAL EQUATION

**3.1. Functional equation.** We determine a kernel functional equation which is the starting point of our analytic study. This key formula connects the Laplace transforms of the Green function inside and on the boundaries of the quarter plane. Let us define  $\gamma$ ,  $\gamma_1$  and  $\gamma_2$  the two variables polynomials such that for  $\theta = (\theta_1, \theta_2)$  we have

$$\begin{cases} \gamma(\theta) = \frac{1}{2}\theta \cdot \Sigma\theta + \theta \cdot \mu = \frac{1}{2}(\sigma_{11}\theta_1^2 + 2\sigma_{12}\theta_1\theta_2 + \sigma_{22}\theta_2^2) + \mu_1\theta_1 + \mu_2\theta_2, \\ \gamma_1(\theta) = R^1 \cdot \theta = r_{11}\theta_1 + r_{21}\theta_2, \\ \gamma_2(\theta) = R^2 \cdot \theta = r_{12}\theta_1 + r_{22}\theta_2, \end{cases} \quad (9)$$

where  $\cdot$  is the scalar product. The equations  $\gamma = 0$ ,  $\gamma_1 = 0$  and  $\gamma_2 = 0$  respectively define in  $\mathbb{R}^2$  an ellipse and two straight lines. Let  $\theta^*$  (resp.  $\theta^{**}$ ) be the point in  $\mathbb{R}^2 \setminus (0, 0)$  such that  $\gamma(\theta^*) = 0$



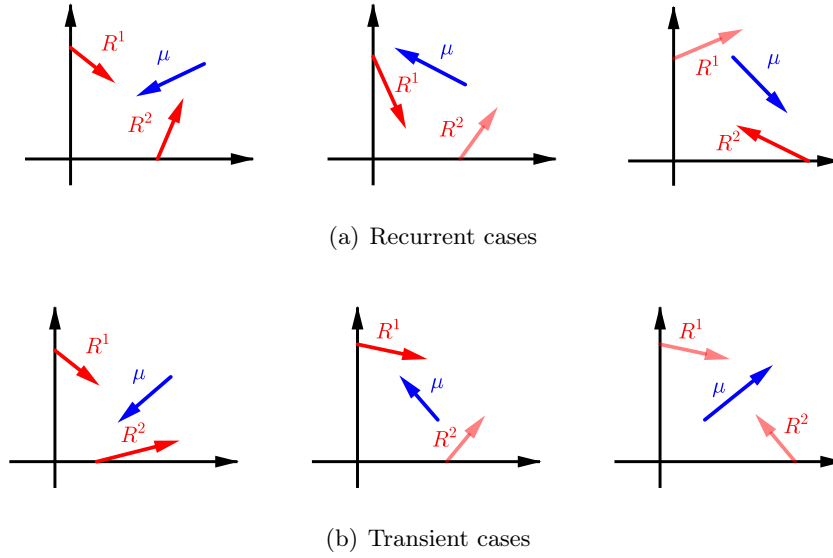


FIGURE 3. Recurrence and transience conditions according to the parameters

and  $\gamma_1(\theta^*) = 0$  (resp.  $\gamma_2(\theta^{**}) = 0$ ). The point  $\theta^*$  (resp.  $\theta^{**}$ ) is the intersection point between the ellipse  $\gamma = 0$  and the straight line  $\gamma_1 = 0$  (resp.  $\gamma_2 = 0$ ), see Figure 4.

**Remark 4.** Notice that the drift  $\mu$  is an orthogonal exterior vector to the ellipse in  $(0, 0)$ . Then the ellipse  $\{\theta \in \mathbb{R}^2 : \gamma(\theta) = 0\} \subset \{\theta \in \mathbb{C}^2 : \Re\theta \cdot \mu < 0\}$ .

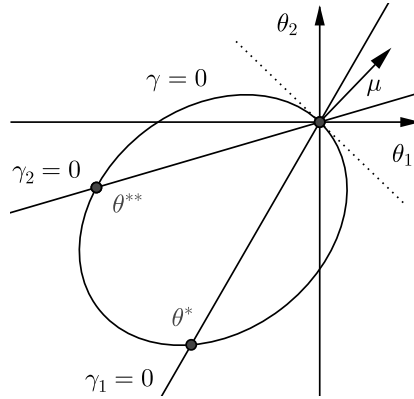


FIGURE 4. Ellipse  $\gamma = 0$ , straight lines  $\gamma_1 = 0$  and  $\gamma_2 = 0$  and intersection points  $\theta^*$  and  $\theta^{**}$

**Proposition 5** (Functional equation). *In the transient case, that is when  $Z_t$  goes to infinity a.s., noting  $x$  the starting point, the following formula holds*

$$-\gamma(\theta)\psi(\theta) = \gamma_1(\theta)\psi_1(\theta_2) + \gamma_2(\theta)\psi_2(\theta_1) + e^{\theta \cdot x} \quad (10)$$

for all  $\theta = (\theta_1, \theta_2) \in \mathbb{C}^2$  such that the integrals  $\psi(\theta)$ ,  $\psi_1(\theta_2)$  and  $\psi_2(\theta_1)$  are finite. Furthermore when  $\mu_1 > 0$  and  $\mu_2 > 0$ :

- $\psi_1(\theta_2)$  is finite on  $\{\theta_2 \in \mathbb{C} : \Re\theta_2 \leq \theta_2^{**}\}$ ,
- $\psi_2(\theta_1)$  is finite on  $\{\theta_1 \in \mathbb{C} : \Re\theta_1 \leq \theta_1^*\}$ ,
- $\psi(\theta)$  is finite on  $\{\theta \in \mathbb{C}^2 : \Re\theta_1 < \theta_1^* \text{ and } \Re\theta_2 < \theta_2^{**}\}$ .

*Proof.* The proof of this functional equation is a consequence of Ito's formula. For  $f \in \mathcal{C}^2(\mathbb{R}_+^2)$  we have

$$f(Z_t) - f(Z_0) = \int_0^t \nabla f(Z_s) \cdot dW_s + \int_0^t \mathcal{L}f(Z_s) ds + \sum_{i=1}^2 \int_0^t R_i \cdot \nabla f(Z_s) dL_t^i,$$

where  $\mathcal{L}$  is the generator defined in (2). Choosing  $f(z) = e^{\theta \cdot z}$  for  $z \in \mathbb{R}_+^2$  and taking the expectation of the last equality we obtain :

$$\mathbb{E}_x[e^{\theta \cdot Z_t}] - e^{\theta \cdot x} = 0 + \gamma(\theta) \mathbb{E}_x \left[ \int_0^t e^{\theta \cdot Z_s} ds \right] + \sum_{i=1}^2 \gamma_i(\theta) \mathbb{E}_x \left[ \int_0^t e^{\theta \cdot Z_s} dL_t^i \right]. \quad (11)$$

Indeed  $\int_0^t \nabla f(Z_s) \cdot dW_s$  is a martingale and then its expectation is zero. Now let  $t$  tend to infinity. Due to (8) we have  $\theta \cdot Z_t/t \xrightarrow{t \rightarrow \infty} \theta \cdot \mu$ . Choosing  $\theta$  such that  $\varphi(\theta)$  is finite implies that  $\Re \theta \cdot Z_t \rightarrow -\infty$ . We deduce that  $\mathbb{E}_x[e^{\theta \cdot Z_t}] \xrightarrow{t \rightarrow \infty} 0$ . The expectations of the following formula being finite by hypothesis, we obtain

$$0 - e^{\theta \cdot x} = \gamma(\theta) \mathbb{E}_x \left[ \int_0^\infty e^{\theta \cdot Z_s} ds \right] + \sum_{i=1}^2 \gamma_i(\theta) \mathbb{E}_x \left[ \int_0^\infty e^{\theta \cdot Z_s} dL_t^i \right]$$

which is the desired equation (10). Let us now assume that  $\theta = \theta^*$  in equality (11), we obtain

$$\mathbb{E}_x[e^{\theta^* \cdot Z_t}] - e^{\theta^* \cdot x} = \gamma_2(\theta^*) \mathbb{E}_x \left[ \int_0^t e^{\theta^* \cdot Z_s} dL_t^2 \right].$$

Let  $t$  go to infinity. Thanks to Remark 4 we have  $\theta^* \cdot Z_t \rightarrow -\infty$  and we obtain

$$\varphi_2(\theta_1^*) = \mathbb{E}_x \left[ \int_0^\infty e^{\theta^* \cdot Z_s} dL_t^2 \right] = \frac{-e^{\theta^* \cdot x}}{\gamma_2(\theta^*)} < \infty.$$

It implies that  $\varphi_2(\theta_1)$  is finite for all  $\Re \theta_1 \leq \theta_1^*$ . On the same way we obtain that  $\varphi_1(\theta_2)$  is finite for all  $\theta_2 \leq \theta_2^{**}$ .

Now assume that  $\theta$  satisfies  $\Re \theta_1 < \theta_1^*$ ,  $\Re \theta_2 < \theta_2^{**}$  and let us deduce that the Laplace transform  $\psi(\theta_1, \theta_2)$  is finite. Thanks to Remark 4 we have  $\Re \theta \cdot \mu < 0$  and then  $\mathbb{E}_x[e^{\theta \cdot Z_t}] \xrightarrow{t \rightarrow \infty} 0$ . Let us consider two cases:

- if  $\gamma(\theta_1^*, \theta_2^{**}) \neq 0$ , taking  $\theta = (\theta_1^*, \theta_2^{**})$  and letting  $t$  go to infinity in (11), we obtain that  $\psi(\theta_1^*, \theta_2^{**})$  is finite. Then  $\psi(\theta_1, \theta_2)$  is finite for all  $(\theta_1, \theta_2)$  such that  $\Re \theta_1 \leq \theta_1^*$  and  $\Re \theta_2 \leq \theta_2^{**}$ .
- if  $\gamma(\theta_1^*, \theta_2^{**}) = 0$  it is possible to find  $\varepsilon > 0$  as small as we want such that  $\gamma(\theta_1^* - \varepsilon, \theta_2^{**} - \varepsilon) \neq 0$ . On the same way that in the previous case we deduce that  $\psi(\theta_1, \theta_2)$  is finite for all  $(\theta_1, \theta_2)$  such that  $\Re \theta_1 < \theta_1^*$  and  $\Re \theta_2 < \theta_2^{**}$ .

□

**3.2. Kernel.** The kernel  $\gamma$  defined in (9) can be written as

$$\gamma(\theta_1, \theta_2) = a(\theta_1)\theta_2^2 + b(\theta_1)\theta_2 + c(\theta_1),$$

where  $a, b, c$  are polynomials in  $\theta_1$  such that

$$a(\theta_1) = \frac{1}{2}\sigma_{22}, \quad b(\theta_1) = \sigma_{12}\theta_1 + \mu_2, \quad c(\theta_1) = \frac{1}{2}\sigma_{11}\theta_1^2 + \mu_1\theta_1.$$

Let  $d(\theta_1) = b^2(\theta_1) - 4a(\theta_1)c(\theta_1)$  be the discriminant. It has two real zeros  $\theta_1^\pm$  of opposite sign which are equal to

$$\theta_1^\pm = \frac{(\mu_2\sigma_{12} - \mu_1\sigma_{22}) \pm \sqrt{(\mu_2\sigma_{12} - \mu_1\sigma_{22})^2 + \mu_2^2 \det \Sigma}}{\det \Sigma}. \quad (12)$$

Cancelling the kernel we define  $\Theta_2(\theta_1)$  a bivalued algebraic function which has two branch points  $\theta_1^\pm$  by  $\gamma(\theta_1, \Theta_2(\theta_1)) = 0$ . We define the two branches  $\Theta_2^\pm$  on the cut plane  $\mathbb{C} \setminus ((-\infty, \theta_1^-) \cup (\theta_1^+, \infty))$  by  $\Theta_2^\pm(\theta_1) = \frac{-b(\theta_1) \pm \sqrt{d(\theta_1)}}{2a(\theta_1)}$ , that is

$$\Theta_2^\pm(\theta_1) = \frac{-(\sigma_{12}\theta_1 + \mu_2) \pm \sqrt{\theta_1^2(\sigma_{12}^2 - \sigma_{11}\sigma_{22}) + 2\theta_1(\mu_2\sigma_{12} - \mu_1\sigma_{22}) + \mu_2^2}}{\sigma_{22}}. \quad (13)$$

On  $(-\infty, \theta_1^-) \cup (\theta_1^+, \infty)$  the discriminant  $d$  is negative and the branches  $\Theta_2^\pm$  take conjugate complex values on this set. It will imply that the curve  $\mathcal{R}$  defined in equation (17) is symmetrical w.r.t. the abscissa. On the same way we define  $\theta_2^\pm$  and  $\Theta_1^\pm$ , it yields

$$\theta_2^\pm = \frac{(\mu_1\sigma_{12} - \mu_2\sigma_{11}) \pm \sqrt{(\mu_1\sigma_{12} - \mu_2\sigma_{11})^2 + \mu_1^2 \det \Sigma}}{\det \Sigma}$$

and

$$\Theta_1^\pm(\theta_2) = \frac{-(\sigma_{12}\theta_2 + \mu_1) \pm \sqrt{\theta_2^2(\sigma_{12}^2 - \sigma_{11}\sigma_{22}) + 2\theta_2(\mu_1\sigma_{12} - \mu_2\sigma_{11}) + \mu_1^2}}{\sigma_{11}}. \quad (14)$$

**3.3. Holomorphic continuation.** The boundary value problem satisfied by  $\psi_1(\theta_2)$  in Section 4 lies on a curve outside of the convergence domain established in Proposition 5 that is  $\{\theta_2 \in \mathbb{C} : \Re \theta_2 \leq \theta_2^{**}\}$ . That is why we extend holomorphically the Laplace transform  $\psi_1$ . We assume that the transient condition (6) is satisfied.

**Lemma 6** (Holomorphic continuation). *The Laplace transform  $\psi_1$  may be holomorphically extended to the open set*

$$\{\theta_2 \in \mathbb{C} \setminus (\theta_2^+, \infty) : \Re \theta_2 < \theta_2^{**} \text{ or } \Re \Theta_1^-(\theta_2) < \theta_1^*\}. \quad (15)$$

*Proof.* The Laplace transform  $\psi_1$  is initially defined on  $\{\theta_2 \in \mathbb{C} : \Re \theta_2 < \theta_2^{**}\}$ , see Proposition 5. By evaluating the functional equation (10) at  $(\Theta_1^-(\theta_2), \theta_2)$  we cancel the kernel and we have

$$\psi_1(\theta_2) = -\frac{\gamma_2(\Theta_1^-(\theta_2), \theta_2)\psi_2(\Theta_1^-(\theta_2)) + \exp(\Theta_1^-(\theta_2)x_1 + \theta_2x_2)}{\gamma_1(\Theta_1^-(\theta_2), \theta_2)} \quad (16)$$

for  $\theta_2$  in the open and non-empty set  $\{\theta_2 \in \mathbb{C} : \Re \theta_2 < \theta_2^{**} \text{ and } \Re \Theta_1^-(\theta_2) < \theta_1^*\}$ . The formula (16) then allows to continue meromorphically  $\psi_1$  on  $\{\theta_2 \in \mathbb{C} : \Re \Theta_1^-(\theta_2) < \theta_1^*\}$ . The potential poles may come from the zeros of  $\gamma_1(\Theta_1^-(\theta_2), \theta_2)$ . The points  $\theta^*$  and  $(0, 0)$  are the only points which cancel  $\gamma_1$ . We notice that  $\Theta_1^-(0) \neq 0$  as  $\mu_1 > 0$ . Then the only possible value in that domain which cancels the denominator of (16) is  $\theta_2^*$  when  $\theta^* = (\Theta_1^-(\theta_2^*), \theta_2^*)$ . In that case  $\theta_2^* < \theta_2^{**}$  and thanks to Proposition 5 we deduce that  $\psi_1(\theta_2^*)$  is finite (which means that the numerator of (16) is zero). We conclude that  $\psi_1$  is holomorphic in the domain (15).  $\square$

This continuation is similar to what is done for the Laplace transform of the invariant measure in [28, 27, 26]. In fact it would be possible to introduce the Riemann surface  $\mathcal{S} = \{(\theta_1, \theta_2) \in \mathbb{C}^2 : \gamma(\theta_1, \theta_2) = 0\}$  which is a sphere and to continue meromorphically the Laplace transforms to the whole surface and even on its universal covering.

#### 4. A BOUNDARY VALUE PROBLEM

The goal of this section is to establish and to solve the non-homogeneous Carleman boundary value problem with shift satisfied by  $\psi_1(\theta_2)$ , the Laplace transform of Green's function on the ordinate. Here the shift is the complex conjugation. We will refer to the reference books on boundary value problems Litvinchuk [42], Muskhelishvili [44] and Gakhov [29] and one will see Appendix B for a brief survey of this theory. In this section we will assume that transience condition (6) is satisfied.

**4.1. Boundary and domain.** This section is mostly technical. Before to state the BVP in Section 4.2 we need to introduce the boundary  $\mathcal{R}$  and the domain  $\mathcal{G}_{\mathcal{R}}$  where the BVP will be satisfied.

An *hyperbola*. The curve  $\mathcal{R}$  is a branch of hyperbola already introduced in [3, 28, 27]. We define  $\mathcal{R}$  as

$$\mathcal{R} = \{\theta_2 \in \mathbb{C} : \gamma(\theta_1, \theta_2) = 0 \text{ et } \theta_1 \in (-\infty, \theta_1^-)\} = \Theta_2^\pm((-\infty, \theta_1^-)) \quad (17)$$

and  $\mathcal{G}_{\mathcal{R}}$  as the open domain of  $\mathbb{C}$  bounded by  $\mathcal{R}$  on the right, see Figure 5. As we noticed in Section 3.2 the curve  $\mathcal{R}$  is symmetrical with respect to the horizontal axis, see Figure 5. See [28, 27] or Baccelli and Fayolle [3, Lemma 9] for more details and a study of this hyperbola. In particular the equation of the hyperbola is given by

$$\sigma_{22}(\sigma_{12}^2 - \sigma_{11}\sigma_{22})x^2 + \sigma_{12}^2\sigma_{22}y^2 - 2\sigma_{22}(\sigma_{11}\mu_2 - \sigma_{12}\mu_1)x = \mu_2(\sigma_{11}\mu_2 - 2\sigma_{12}\mu_1). \quad (18)$$

On Figure 6 one can see the shape of  $\mathcal{R}$  according to the sign of the covariance  $\sigma_{12}$ . The part of  $\mathcal{R}$  with negative imaginary part is denoted by  $\mathcal{R}^-$ .

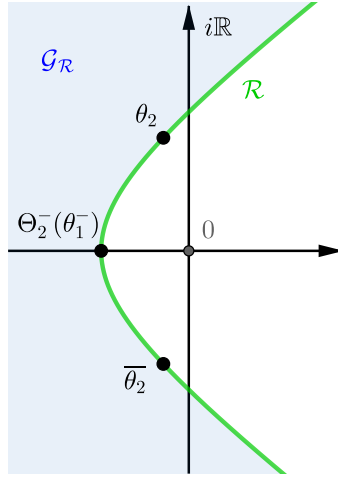


FIGURE 5. Curve  $\mathcal{R}$  defined in (17) in green and domain  $\mathcal{G}_{\mathcal{R}}$  in blue

*Continuation on the domain.* Together with Lemma 6 the following lemma implies that  $\psi_1$  may be holomorphically extended to a domain containing  $\overline{\mathcal{G}_{\mathcal{R}}}$ .

**Lemma 7.** *The set  $\overline{\mathcal{G}_{\mathcal{R}}}$  is strictly included in the domain*

$$\{\theta_2 \in \mathbb{C} \setminus (\theta_2^+, \infty) : \Re \theta_2 < \theta_2^{**} \text{ or } \Re \Theta_1^-(\theta_2) < \theta_1^*\}$$

defined in (15).

*Proof.* This proof is similar to the one of Lemma 5 of [28]. First we notice that the set  $\overline{\mathcal{G}_{\mathcal{R}}} \cap \{\theta_2 \in \mathbb{C} : \Re \theta_2 < \theta_2^{**}\}$  is included in the domain defined in (15). Then it remains to prove that the set

$$S := \overline{\mathcal{G}_{\mathcal{R}}} \cap \{\theta_2 \in \mathbb{C} : \Re \theta_2 \geq \theta_2^{**}\}$$

is a subset of the domain (15). More precisely, we show that  $S$  is included in

$$T := \{\theta_2 \in \mathbb{C} \setminus (\theta_2^+, \infty) : \Re \Theta_1^-(\theta_2) < \theta_1^*\}.$$

First of all, notice that the set  $S$  is bounded by (a part of) the hyperbola  $\mathcal{R}$  and (a part of) the straight line  $\theta_2^{**} + i\mathbb{R}$ . We denote  $\theta_2^{**} \pm it_1$  the two intersection points of these two curves when they exist, see Figure 6. The definition of  $\mathcal{R}$  implies that  $\mathcal{R} \subset T$ . Indeed the image of  $\mathcal{R}$  by  $\Theta_1^-$  is included in  $(-\infty, \theta_1^-)$  and  $\theta_1^- \leq \theta_1^*$ . Furthermore (the part of)  $\theta_2^{**} + i\mathbb{R}$  that bounds  $S$  also belongs to  $T$  because for  $t \in \mathbb{R}_+$  and using the fact that  $\det \Sigma > 0$  Equation (14) yields after some calculations

$$\begin{cases} \Re \Theta_1^-(\theta_2^{**} \pm it) \leq \Re \Theta_1^-(\theta_2^{**}) = \theta_1^{**} < \theta_1^*, & \text{when } \theta_2^{**} \leq \Theta_2(\theta_1^-); \\ \Re \Theta_1^-(\theta_2^{**} \pm i(t_1 + t)) \leq \Re \Theta_1^-(\theta_2^{**} \pm it_1) < \theta_1^*, & \text{when } \theta_2^{**} > \Theta_2(\theta_1^-). \end{cases}$$

The inequality  $\theta_1^{**} < \theta_1^*$  is due to the assumption that  $\theta_2^{**} \leq \Theta_2(\theta_1^-)$  and the inequality  $\Re\Theta_1^-(\theta_2^{**} \pm it_1) < \theta_1^*$  comes from the fact that  $\theta_2^{**} \pm it_1 \in \mathcal{R} \subset T$ . Let us denote  $\beta = \arccos -\frac{\sigma_{12}}{\sqrt{\sigma_{11}\sigma_{22}}}$ . To conclude we consider two cases:

- $\sigma_{12} < 0$  or equivalently  $0 < \beta < \frac{\pi}{2}$ : the set  $S$  is either empty or bounded, see the left picture on Figure 6. Applying the maximum principle to the function  $\Re\Theta_1^-$  show that the image of every point of  $S$  by  $\Re\Theta_1^-$  is smaller than  $\theta_1^*$  and then that  $S$  is included in  $T$ .
- $\sigma_{12} \geq 0$  or equivalently  $\frac{\pi}{2} \leq \beta < \pi$ : henceforth the set  $S$  is unbounded as we can see on the right picture of Figure 6. It is no more possible to apply directly the maximum principle. However, to conclude we show that the image by  $\Re\Theta_1^-$  of a point  $re^{it} \in T$  near to infinity is smaller than  $\theta_1^*$ . The asymptotic directions of  $\theta_1^* + i\mathbb{R}$  are  $\pm\frac{\pi}{2}$  and (18) implies that those of  $\mathcal{R}$  are  $\pm(\pi - \beta)$ . Then as in the proof of Lemma 5 of [28] we prove with (14) that for  $t \in (\pi - \beta, \frac{\pi}{2})$  we have

$$\Theta_1^-(re^{\pm it}) \underset{r \rightarrow \infty}{\sim} r \sqrt{\frac{\sigma_{22}}{\sigma_{11}}} e^{\pm i(t+\beta)}.$$

For  $t \in (\pi - \beta, \frac{\pi}{2})$  this implies that  $\Re\Theta_1^-(re^{\pm it}) \underset{r \rightarrow \infty}{\rightarrow} -\infty$  and we obtain that  $\Re\Theta_1^-(re^{\pm it}) < \theta_1^*$  for  $r$  large enough. As in the case  $\sigma_{12} < 0$  we finish the proof with the maximum principle.  $\square$

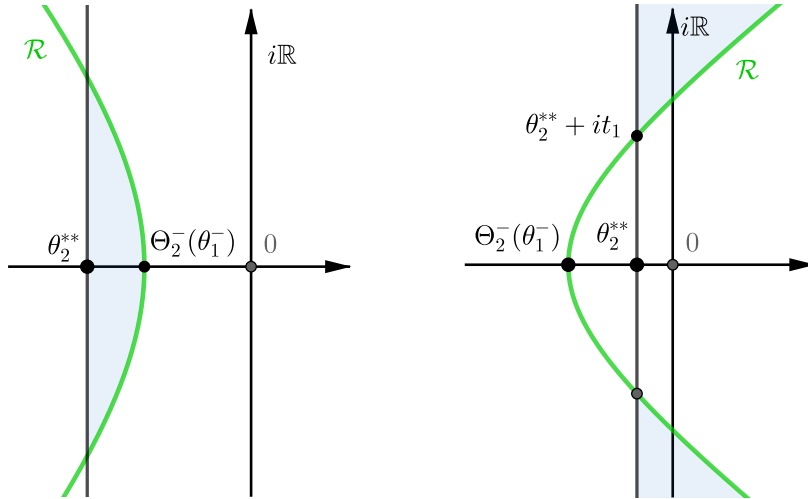


FIGURE 6. On the left  $\sigma_{12} < 0$ , and on the right  $\sigma_{12} \geq 0$ . The blue domain is the set  $S$ .

**4.2. Carleman boundary value problem.** We establish a boundary value problem (BVP) with shift (here it is the complex conjugation) on the hyperbola  $\mathcal{R}$ . Let us define the functions  $G$  and  $g$  such that

$$G(\theta_2) := \frac{\gamma_1}{\gamma_2}(\Theta_1^-(\theta_2), \theta_2) \frac{\gamma_2}{\gamma_1}(\Theta_1^-(\theta_2), \overline{\theta_2}), \quad (19)$$

and

$$g(\theta_2) := \frac{\gamma_2}{\gamma_1}(\Theta_1^-(\theta_2), \overline{\theta_2}) \left( \frac{e^{(\Theta_1^-(\theta_2), \theta_2) \cdot x}}{\gamma_2(\Theta_1^-(\theta_2), \theta_2)} - \frac{e^{(\Theta_1^-(\theta_2), \overline{\theta_2}) \cdot x}}{\gamma_2(\Theta_1^-(\theta_2), \overline{\theta_2})} \right). \quad (20)$$

**Lemma 8** (BVP for  $\psi_1$ ). *The Laplace transform  $\psi_1$  satisfies the following boundary value problem:*

- (i)  $\psi_1$  is analytic on  $\mathcal{G}_{\mathcal{R}}$ , continuous on its closure  $\overline{\mathcal{G}_{\mathcal{R}}}$  and goes to 0 at infinity;
- (ii)  $\psi_1$  satisfies the boundary condition

$$\psi_1(\overline{\theta_2}) = G(\theta_2)\psi_1(\theta_2) + g(\theta_2), \quad \forall \theta_2 \in \mathcal{R}. \quad (21)$$

This BVP is said to be non-homogeneous because of the function  $g$  coming from the term  $e^{\theta \cdot x}$  in the functional equation.

*Proof.* The analytic and continuous properties of item (i) derive from Lemma 6 and Lemma 7. The behaviour at infinity derives from the integral formula (1) which defines the Laplace transform  $\psi_1$  and from the continuation formula (16). We now show item (ii). For  $\theta_1 \in (-\infty, \theta_1^-)$  let us evaluate the functional equation (10) at the points  $(\theta_1, \Theta_2^\pm(\theta_1))$ . It yields the two equations

$$0 = \gamma_1(\theta_1, \Theta_2^\pm(\theta_1))\psi_1(\Theta_2^\pm(\theta_1)) + \gamma_2(\theta_1, \Theta_2^\pm(\theta_1))\psi_2(\theta_1) + e^{(\theta_1, \Theta_2^\pm(\theta_1)) \cdot x}.$$

Eliminating  $\psi_2(\theta_1)$  from the two equations gives

$$\psi_1(\Theta_2^+(\theta_1)) = \frac{\gamma_1(\theta_1, \Theta_2^-(\theta_1))}{\gamma_2(\theta_1, \Theta_2^-(\theta_1))} \frac{\gamma_2(\theta_1, \Theta_2^+(\theta_1))}{\gamma_1(\theta_1, \Theta_2^+(\theta_1))} \psi_1(\Theta_2^-(\theta_1)) + \frac{\gamma_2(\theta_1, \Theta_2^+(\theta_1))}{\gamma_2(\theta_1, \Theta_2^-(\theta_1))} \frac{e^{(\theta_1, \Theta_2^-(\theta_1)) \cdot x}}{\gamma_1(\theta_1, \Theta_2^+(\theta_1))} - \frac{e^{(\theta_1, \Theta_2^+(\theta_1)) \cdot x}}{\gamma_1(\theta_1, \Theta_2^+(\theta_1))}.$$

Choosing  $\theta_1 \in (-\infty, \theta_1^-)$ , the quantities  $\Theta_2^+(\theta_1)$  and  $\Theta_2^-(\theta_1)$  go through the whole curve  $\mathcal{R}$  (defined in (17)) and are complex conjugate, see Section 3.2. Noticing in that case that  $\Theta_1^-(\Theta_2^-(\theta_1)) = \theta_1$ , we obtain equation (21).  $\square$

**4.3. Conformal gluing function.** To solve the BVP of Lemma 8 we need a function  $w$  which satisfies the following conditions:

- (i)  $w$  is holomorphic on  $\mathcal{G}_{\mathcal{R}}$ , continuous on  $\overline{\mathcal{G}_{\mathcal{R}}}$  and goes to infinity at infinity,
- (ii)  $w$  is one to one from  $\mathcal{G}_{\mathcal{R}}$  to  $\mathbb{C} \setminus (-\infty, -1]$ ,
- (iii)  $w(\theta_2) = w(\overline{\theta_2})$  for all  $\theta_2 \in \mathcal{R}$ .

Such a function  $w$  is called a conformal gluing function because it glues together the upper and the lower part of the hyperbola  $\mathcal{R}$ . Let us define  $w$  in terms of generalized Chebyshev polynomial

$$T_a(x) = \cos(a \arccos(x)) = \frac{1}{2} \left\{ (x + \sqrt{x^2 - 1})^a + (x - \sqrt{x^2 - 1})^a \right\}$$

as

$$w(\theta_2) = T_{\frac{\pi}{\beta}} \left( -\frac{2\theta_2 - (\theta_2^+ + \theta_2^-)}{\theta_2^+ - \theta_2^-} \right) \quad (22)$$

for all  $\theta_2 \in \mathbb{C} \setminus [\theta_2^+, \infty)$  and where

$$\beta = \arccos -\frac{\sigma_{12}}{\sqrt{\sigma_{11}\sigma_{22}}}. \quad (23)$$

The function  $w$  is a conformal gluing function which satisfies (i), (ii), (iii) and  $w(\Theta_2^\pm(\theta_1^-)) = -1$ . See [27, Lemma 3.4] for the proof of these properties. The following lemma is a direct consequence of these properties.

**Lemma 9** (Conformal gluing function). *The function  $W$  defined by*

$$W(\theta_2) = \frac{w(\theta_2) + 1}{w(\theta_2)}$$

*satisfies the following properties :*

- (1)  $W$  is holomorphic on  $\mathcal{G}_{\mathcal{R}} \setminus \{w^{-1}(0)\}$ , continuous on  $\overline{\mathcal{G}_{\mathcal{R}}} \setminus \{w^{-1}(0)\}$  and goes to 1 at infinity,
- (2)  $W$  is one to one from  $\mathcal{G}_{\mathcal{R}} \setminus \{w^{-1}(0)\}$  to  $\mathbb{C} \setminus [0, 1]$ ,
- (3)  $W(\theta_2) = W(\overline{\theta_2})$  for all  $\theta_2 \in \mathcal{R}$ .

We introduce  $W$  to avoid any technical problem at infinity. We have a cut on the segment  $[0, 1]$  and we will be able to apply the propositions presented in Appendix B. Notice that we have chosen arbitrarily the pole of  $W$  in  $w^{-1}(0)$ , but every other point  $w^{-1}(x)$  for  $x \in \mathbb{C} \setminus (-\infty, -1]$  would have been suitable.

**4.4. Index of the BVP.** We denote

$$\Delta = [\arg G]_{\mathcal{R}^-} = [\arg H]_0^1 \quad \text{and} \quad d = \arg G(\Theta_2^\pm(\theta_1^-)) = \arg H(0) \in (-\pi, \pi].$$

To solve the BVP of Lemma 8 we need to compute the index  $\chi$  which is defined by

$$\chi = \left\lfloor \frac{d + \Delta}{2\pi} \right\rfloor.$$

**Lemma 10 (Index).** *The index  $\chi$  is equal to*

$$\chi = \begin{cases} 0 & \text{if } \gamma_1(\theta_1^-, \Theta_2^\pm(\theta_1^-))\gamma_2(\theta_1^-, \Theta_2^\pm(\theta_1^-)) \leq 0, \\ 1 & \text{if } \gamma_1(\theta_1^-, \Theta_2^\pm(\theta_1^-))\gamma_2(\theta_1^-, \Theta_2^\pm(\theta_1^-)) > 0. \end{cases}$$

The index is then equal to 0 or 1 depending on the position of the two straight lines  $\gamma_1 = 0$  and  $\gamma_2 = 0$  with respect to the red point  $(\theta_1^-, \Theta_2^\pm(\theta_1^-))$ . See Figure 7 which illustrates this lemma.

*Proof.* The proof is similar in each step to the proof of Lemma 14 in [28] except that in our case  $\gamma_2(\theta_1^-, \Theta_2^\pm(\theta_1^-))$  is not always positive.  $\square$

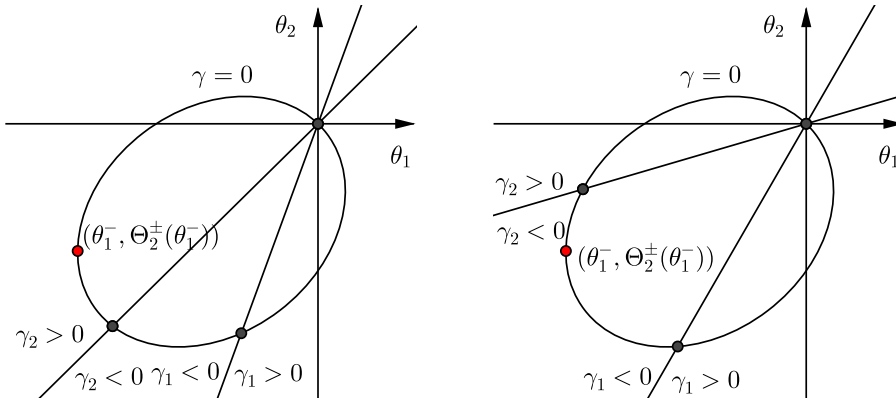


FIGURE 7. On the left  $\chi = 0$  and on the right  $\chi = 1$

**4.5. Resolution of the BVP.** The following theorem, already presented in the introduction as the main result of this paper, holds.

**Theorem 11 (Explicit expression of  $\psi_1$ ).** *Assume conditions (6) and (8). For  $\theta_2 \in \mathcal{G}_{\mathcal{R}}$ , the Laplace transform  $\psi_1$  defined in (1) is equal to*

$$\psi_1(\theta_2) = \frac{-Y(w(\theta_2))}{2i\pi} \int_{\mathcal{R}^-} \frac{g(t)}{Y^+(w(t))} \left( \frac{w'(t)}{w(t) - w(\theta_2)} + \chi \frac{w'(t)}{w(t)} \right) dt \quad (24)$$

with

$$Y(w(\theta_2)) = w(\theta_2)^\chi \exp \left( \frac{1}{2i\pi} \int_{\mathcal{R}^-} \log(G(s)) \left( \frac{w'(s)}{w(s) - w(\theta_2)} - \frac{w'(s)}{w(s)} \right) ds \right),$$

and where

- $G$  is defined in (19) and  $g$  in (20),
- $w$  is the conformal gluing function defined in (22),
- $\mathcal{R}^-$  is the part of the hyperbola  $\mathcal{R}$  defined in (17) with negative imaginary part,

- $\chi = 0$  or  $1$  is determined by Lemma 10,
- $Y^+$  is the limit value on  $\mathcal{R}^-$  of  $Y$  (and may be expressed thanks to Sokhotski-Plemelj formulas stated in Proposition 12 of Appendix B).

*Proof.* We define the function  $\Psi$  by

$$\Psi(z) = \psi_1(W^{-1}(z)), \quad \text{for } z \in \mathbb{C} \setminus [0, 1].$$

Then  $\Psi$  satisfies the Riemann BVP of Proposition 23 in Appendix B. The resolution of this BVP leads to Proposition 24 which gives a formula for the Laplace transform  $\psi_1 = \Psi \circ W$ . We then have

$$\psi_1(\theta_2) = \begin{cases} X(W(\theta_2))\varphi(W(\theta_2)) & \text{for } \chi = -1, \\ X(W(\theta_2))(\varphi(W(\theta_2)) + C) & \text{for } \chi = 0, \end{cases}$$

where  $C$  is a constant,  $\chi$  is determined in Lemma 10 and the functions  $X$  and  $\varphi$  are defined by

$$X(W(\theta_2)) := (W(\theta_2) - 1)^{-\chi} \exp\left(\frac{1}{2i\pi} \int_{\mathcal{R}^-} \log(G(t)) \frac{W'(t)}{W(t) - W(\theta_2)} dt\right), \quad \theta_2 \in \mathcal{G}_{\mathcal{R}},$$

and

$$\varphi(W(\theta_2)) := \frac{-1}{2i\pi} \int_{\mathcal{R}^-} \frac{g(t)}{X^+(W(t))} \frac{W'(t)}{W(t) - W(\theta_2)} dt, \quad \theta_2 \in \mathcal{G}_{\mathcal{R}}.$$

When  $\chi = 0$  the constant is determined evaluating  $\psi_1$  at  $-\infty$ . We have  $\psi_1(-\infty) = 0$ ,  $W(-\infty) = 0$  and we obtain  $C = -\varphi(1) = \frac{1}{2i\pi} \int_{\mathcal{R}^-} \frac{g(t)}{X^+(W(t))} \frac{W'(t)}{W(t)-1} dt$ . To end the proof we just have to notice that

$$W(\theta_2) - 1 = \frac{1}{w(\theta_2)}, \quad \frac{W'(t)}{W(t) - W(\theta_2)} = \frac{w'(t)}{w(t) - w(\theta_2)} - \frac{w'(t)}{w(t)} \quad \text{and} \quad \frac{W'(t)}{W(t) - 1} = -\frac{w'(t)}{w(t)}.$$

□

**4.6. Decoupling functions.** Due to the function  $G \neq 1$  in (21), the boundary value problem is complex. When it is possible to reduce the BVP to the case where  $G = 1$ , it is then possible to solve it directly thanks to Sokhotski-Plemelj formulas, see Remark 13 in Appendix B.

In some specific cases it is possible to find a rational function  $F$  satisfying the decoupling condition

$$G(\theta_2) = \frac{F(\theta_2)}{F(\bar{\theta}_2)}, \quad \forall \theta_2 \in \mathcal{R}, \quad (25)$$

where  $G$  is defined in (19). Such a function  $F$  is called a decoupling function. In [5] the authors show that such a function exists if and only if the following condition holds

$$\varepsilon + \delta \in \beta\mathbb{Z} + \pi\mathbb{Z}, \quad (26)$$

where  $\beta$  is defined in (23) and  $\varepsilon, \delta \in (0, \pi)$  are defined by

$$\tan \varepsilon = \frac{\sin \beta}{r_{21} \sqrt{\frac{\sigma_{11}}{\sigma_{22}} + \cos \beta}} \quad \text{and} \quad \tan \delta = \frac{\sin \beta}{r_{12} \sqrt{\frac{\sigma_{22}}{\sigma_{11}} + \cos \beta}}.$$

In this case it is possible to solve in an easier way the boundary value problem. The boundary condition (21) may be rewritten as

$$(F\psi_1)(\bar{\theta}_2) = (F\psi_1)(\theta_2) + F(\bar{\theta}_2)g(\theta_2), \quad \forall \theta_2 \in \mathcal{R}.$$

Using again the conformal gluing function  $w$ , we transform the BVP into a Riemann BVP, see Appendix B. Such an approach leads to an alternative formula for  $\psi_1$  which is simpler. Indeed, thanks to Remark 13, in the cases where the rational fraction  $F$  goes to 0 at infinity, we obtain

$$\psi_1(\theta_2) = \frac{1}{2i\pi} \frac{1}{F(\theta_2)} \int_{\mathcal{R}^-} \frac{F(\bar{t})g(t)}{w(t) - w(\theta_2)} dt, \quad \theta_2 \in \mathcal{G}_{\mathcal{R}}.$$



## APPENDIX A. POTENTIAL THEORY

There have not been many studies to determine explicit expressions for Green's functions of diffusions. In order to make the article self-contained and give context, in this appendix we illustrate in an informal way the links between partial differential equations and Green's functions of Markov processes in potential theory.

**A.1. Dirichlet boundary condition and killed process.** Let  $\Omega$  be an open, bounded, smooth subset of  $\mathbb{R}^d$  and  $X_t$  an homogeneous diffusion of generator  $\mathcal{L}$  starting from  $x$  and killed at the boundary  $\partial\Omega$ . Assume that  $X_t$  admits a density transition  $p_t(x, y)$  and note  $g(x, y)$  the Green's function defined by

$$g(x, y) = \int_0^\infty p_t(x, y) dt.$$

The forward Kolmogorov equation (or Fokker-Planck equation) with boundary and initial condition says that

$$\begin{cases} \mathcal{L}_y^* p_t(x, y) = \partial_t p_t(x, y), \\ p_t(x, \cdot) = 0 \text{ on } \partial\Omega, \\ p_0(x, \cdot) = \delta_x. \end{cases}$$

Integrating this equation in time we can see that Green's function is a fundamental solution of the dual operator  $L^*$  and satisfies

$$\begin{cases} \mathcal{L}_y^* g(x, \cdot) = -\delta_x & \text{in } \Omega, \\ g(x, \cdot) = 0 & \text{on } \partial\Omega. \end{cases}$$

Now, let  $f$  be a continuous function on  $\bar{\Omega}$  and  $\varphi$  a continuous function on  $\partial\Omega$ . If we assume that the equation

$$\begin{cases} \mathcal{L}u = -f & \text{in } \Omega, \\ u = \varphi & \text{on } \partial\Omega, \end{cases}$$

admits a unique solution, it is possible to express it in terms of the Green's functions. We have

$$u(x) = \mathbb{E}_x \left[ \int_0^\tau f(X_t) dt \right] + \mathbb{E}_x [\varphi(X_\tau)] = \int_\Omega f(y) g(x, y) dy + \int_{\partial\Omega} \varphi(y) \partial_{n_y} g(x, y) ds(y),$$

where  $\tau$  is the first exit time of  $\Omega$ . (Note that  $\partial_{n_y} g$ , the *inner* normal derivative on the boundary of Green's function, may be interpreted as the density of the distribution of the exit place.) Thanks to Green's functions it is then possible to solve an interior Poisson's type equation with Dirichlet boundary conditions which specify the value of  $u$  on the boundary and the value of  $\mathcal{L}u$  inside  $\Omega$ .

**A.2. Neumann boundary condition and reflected process.** Henceforth, let us replace the interior Dirichlet problem by an exterior Neumann boundary problem which specifies the value of the normal derivative of  $u$  on the boundary and the value of  $\mathcal{L}u$  outside  $\Omega$  in  $\Omega^c = \mathbb{R}^d \setminus \bar{\Omega}$ :

$$\begin{cases} \mathcal{L}u = -f & \text{in } \Omega^c, \\ \partial_n u = \varphi & \text{on } \partial\Omega. \end{cases}$$

While the Dirichlet equation was linked to some killed process on the boundary, the Neumann equation is linked to a reflected process. From now, let us denote  $X_t$  the reflected process on  $\partial\Omega$  of generator  $L$  inside  $\Omega^c$ . Let us recall that  $\Omega^c$  is unbounded, we assume that the process is transient and we note  $g$  its Green's function. This time again,  $g$  is a fundamental solution of  $\mathcal{L}^*$  (with a more complex boundary condition of Robin type linking  $u$  and  $\partial_n u$ ). There are some necessary compatibility conditions linking  $f$  and  $\varphi$  in order for a solution to exist, for example

if  $\mathcal{L} = \Delta$  the interior Neumann boundary problem can have a solution only if  $\int_{\Omega} f = - \int_{\partial\Omega} \varphi$ . The solution vanishing at infinity of the Neumann problem, if it exists, is equal to

$$u(x) = \mathbb{E}_x \left[ \int_0^{\infty} f(X_t) dt \right] + \mathbb{E}_x \left[ \int_0^{\infty} \varphi(X_t) dL_t \right] = \int_{\Omega} f(y)g(x,y)dy + \int_{\partial\Omega} \varphi(y)h(x,y)ds(y).$$

We have noted  $L_t$  the local time that the process spends on the boundary  $\partial\Omega$  and  $h$  the density of the boundary Green's measure  $H$  which is equal to

$$H(x, A) = \mathbb{E}_x \left[ \int_0^{\infty} \mathbf{1}_A(X_t) dL_t \right] \quad \text{for } A \subset \partial\Omega,$$

and represents the average local time that the process spends on the set  $A$  of the boundary. In fact  $h$  and the restriction of  $g$  to  $\partial\Omega$  are intimately related, for example if  $\mathcal{L} = \Delta$  then  $h = g|_{\partial\Omega}$ . These formulas present, in an informal way, how to solve a Neumann boundary equation thanks to Green's functions. The Appendix C illustrates this by giving an explicit example in one dimension in (32).

Unfortunately, finding Green's functions is often a difficult task. Notice that in this paper  $\Omega^c = \mathbb{R}_+^2$  and  $\Omega$  is therefore neither bounded nor smooth, furthermore our reflections are not normal but oblique. All these parameters contribute to make our task more complicated.

APPENDIX B. CARLEMAN BVP

This appendix is a short presentation of the boundary value problems (BVP) theory. It introduces methods and techniques used for the resolution of BVP. The results presented here can be found in the reference books of Litvinchuk [42], Muskhelishvili [44] and Gakhov [29].

**B.1. Sokhotski-Plemelj formulae.** Sokhotski-Plemelj formulas are central in the resolution of Riemann boundary value problems. Let  $\mathcal{L}$  a contour (open or closed) smooth and oriented and  $f \in \mathbb{H}_{\mu}(\mathcal{L})$  the set of  $\mu$ -Hölder continuous functions on  $\mathcal{L}$  for  $0 < \mu \leq 1$ . A function is sectionally holomorphic if it is holomorphic on the whole complex plane deprived of  $\mathcal{L}$  and admits right and left limits on  $\mathcal{L}$  (except on its potential extremities).

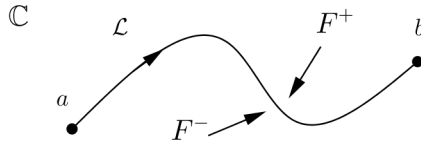


FIGURE 8. An oriented smooth open contour  $\mathcal{L}$  of extremities  $a$  and  $b$ ; right limit  $F^-$  and left limit  $F^+$  of  $F$  on  $\mathcal{L}$

**Proposition 12** (Sokhotski-Plemelj formulae). *The function*

$$F(z) := \frac{1}{2i\pi} \int_{\mathcal{L}} \frac{f(t)}{t-z} dt, \quad z \notin \mathcal{L}$$

*is sectionally holomorphic. The functions  $F^+$  and  $F^-$  on  $\mathcal{L}$  taking the limit values of  $F$  respectively on the left and on the right satisfy for  $t \in \mathcal{L}$  the formulas*

$$F^+(t) = \frac{1}{2}f(t) + \frac{1}{2i\pi} \int_{\mathcal{L}} \frac{f(s)}{s-t} ds \quad \text{and} \quad F^-(t) = -\frac{1}{2}f(t) + \frac{1}{2i\pi} \int_{\mathcal{L}} \frac{f(s)}{s-t} ds.$$

*Theses formulas are equivalent to the equations*

$$F^+(t) - F^-(t) = f(t) \quad \text{and} \quad F^+(t) + F^-(t) = \frac{1}{i\pi} \int_{\mathcal{L}} \frac{f(s)}{s-t} ds.$$

These integrals are understood in the sense of the principal value, see [29, Chap. 1, Sect. 12].

**Remark 13** (Sectionally holomorphic functions for a given discontinuity). Liouville's theorem shows that the function  $F$  defined above is the unique sectionally holomorphic function satisfying the equation

$$\Phi^+(t) - \Phi^-(t) = f(t), \quad \forall t \in \mathcal{L}$$

and which vanishes at infinity. The solutions of this equation of finite degree at infinity are the functions such that

$$\Phi = F + P$$

where  $P$  is a polynomial.

**Remark 14** (Behavior at the extremities). It is possible to show that if  $\mathcal{L}$  is an oriented open contour from extremity  $a$  to extremity  $b$ , then at the vicinity of an extremity  $c$  it exists  $F_c(z)$ , an holomorphic function at the vicinity of  $c$ , such that

$$F(z) = \frac{\varepsilon_c}{2i\pi} f(c) \log(z - c) + F_c(z) \quad \text{where} \quad \varepsilon_c = \begin{cases} -1 & \text{if } c = a, \\ 1 & \text{if } c = b. \end{cases} \quad (27)$$

**B.2. Riemann boundary value problem.** In a standard way, a boundary value problem is composed of a regularity condition on a domain and a boundary condition on that domain.

**Definition 15** (Riemann BVP). *We say that  $\Phi$  satisfies a Riemann BVP on  $\mathcal{L}$  if:*

- $\Phi$  is sectionally holomorphic on  $\mathbb{C} \setminus \mathcal{L}$  and admits  $\Phi^+$  as left limit and  $\Phi^-$  as right limit,  $\Phi$  is of finite degree at infinity;
- $\Phi$  satisfies the boundary condition

$$\Phi^+(t) = G(t)\Phi^-(t) + g(t), \quad t \in \mathcal{L}$$

where  $G$  and  $g$  are functions defined on  $\mathcal{L}$ .

We assume here that  $G$  and  $g \in \mathbb{H}_\mu(\mathcal{L})$  and that  $G$  doesn't cancel on  $\mathcal{L}$ . When  $g = 0$  we talk about a homogeneous Riemann BVP.

**B.2.1. Closed contour.** We assume that the contour  $\mathcal{L}$  is closed and we denote  $\mathcal{L}^+$  the open bounded set of boundary  $\mathcal{L}$ , and  $\mathcal{L}^-$  the complementary of  $\mathcal{L}^+ \cup \mathcal{L}$ .

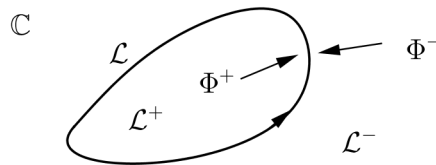


FIGURE 9. Oriented closed smooth contour  $\mathcal{L}$ , domains  $\mathcal{L}^+$  and  $\mathcal{L}^-$  and limit values of  $\Phi$  on the right and on the left

To solve the Riemann BVP we need to introduce the *index*

$$\chi := \frac{1}{2i\pi} [\log G]_{\mathcal{L}} = \frac{1}{2\pi} [\arg G]_{\mathcal{L}}$$

which quantifies the variation of the argument of  $G$  on the contour  $\mathcal{L}$  in the positive direction. Without any loss of generality we assume that  $0$  is in  $\mathcal{L}^+$ . It is then possible to define the single-valued function

$$\log(t^{-\chi} G(t)), \quad t \in \mathcal{L}$$

which satisfies the Hölder condition.

**Proposition 16** (Solution of homogeneous Riemann BVP on a closed contour). *Let us define*

$$\Gamma(z) := \frac{1}{2i\pi} \int_{\mathcal{L}} \frac{\log(t^{-\chi}G(t))}{t-z} dt, \quad z \notin \mathcal{L}$$

and

$$X(z) := \begin{cases} \exp \Gamma(z), & z \in \mathcal{L}^+, \\ z^{-\chi} \exp \Gamma(z), & z \in \mathcal{L}^-. \end{cases}$$

The function  $X$  is the fundamental solution of the homogeneous Riemann BVP of Definition 15, i.e.  $X$  satisfies the boundary condition  $X^+(t) = G(t)X^-(t)$  for  $t \in \mathcal{L}$ . The function  $X$  is of degree  $-\chi$  at infinity. If  $\Phi$  is a solution of the homogeneous Riemann BVP, then  $\Phi(z) = X(z)P(z)$  where  $P$  is a polynomial.

If we denote  $k$  the degree of  $P$ , the solution  $\Phi$  is of degree  $k - \chi$  at infinity. The fundamental solution  $X$  of degree  $-\chi$  is then the non-zero homogeneous solution of smallest degree to infinity.

*Proof.* For  $t \in \mathcal{L}$ , let us denote  $\tilde{\Gamma}(t) = \frac{1}{2i\pi} \int_{\mathcal{L}} \frac{\log(s^{-\chi}G(s))}{s-t} ds$  where the integral is understood in the sense of principal value. Sokhotski-Plemelj formulas applied at  $\Gamma$  show that

$$X^+(t) = e^{\tilde{\Gamma}(t)} \sqrt{t^{-\chi}G(t)} \quad \text{and} \quad X^-(t) = t^{-\chi} e^{\tilde{\Gamma}(t)} \frac{1}{\sqrt{t^{-\chi}G(t)}} \quad \text{for } t \in \mathcal{L}, \quad (28)$$

and then that  $X$  is a solution of the homogeneous problem. If  $\Phi$  is a solution of the problem, as  $X^\pm(z) \neq 0$  for  $z \in \mathcal{L}$  we obtain

$$\frac{\Phi^+}{X^+}(z) = \frac{\Phi^-}{X^-}(z), \quad z \in \mathcal{L}.$$

By analytic continuation the function  $\frac{\Phi}{X}$  is then holomorphic in the whole complex plane, is of finite degree at infinity and is then a polynomial according to Liouville's theorem.  $\square$

**Proposition 17** (Solution of Riemann BVP on a closed contour). *We define*

$$\varphi(z) := \frac{1}{2i\pi} \int_{\mathcal{L}} \frac{g(t)}{X^+(t)(t-z)} dt, \quad z \notin \mathcal{L}.$$

The solutions of the Riemann BVP of Definition 15 are the functions such that

$$\Phi(z) = X(z)\varphi(z) + X(z)P_\chi(z)$$

where  $P_\chi$  is a polynomial of degree  $\chi$  for  $\chi \geq 0$  and  $P_\chi = 0$  for  $\chi \leq -1$ .

**Remark 18** (Left limit  $X^+$ ). We have  $X^+(t) = (t-b)^{-\chi} e^{\Gamma^+(t)}$  where  $\Gamma^+(t)$  is the left limit value of  $\Gamma$  on  $\mathcal{L}$  given by the Sokhotski-Plemelj formulas of Proposition 12, see (28).

**Remark 19** (Solubility conditions). For  $\chi < -1$  the solutions are holomorphic at infinity (and then bounded) if and only if the following conditions are satisfied:

$$\int_{\mathcal{L}} \frac{g(t)t^{k-1}}{X^+(t)} dt = 0, \quad k = 1, \dots, -\chi - 1. \quad (29)$$

*Proof.* The fundamental solution  $X^\pm$  does not cancel on  $\mathcal{L}$  and we have the factorisation  $G = \frac{X^+}{X^-}$ . If  $\Phi$  is a solution of the BVP we have

$$\frac{\Phi^+}{X^+}(t) = \frac{\Phi^-}{X^-}(t) + \frac{g}{X^+}(t), \quad t \in \mathcal{L}.$$

The function  $\frac{\Phi}{X}$  being of finite degree at infinity, Remark 13 gives  $\frac{\Phi}{X} = \varphi + P$ .  $\square$

**B.2.2. Open contour.** We assume that the function  $\Phi$  we are looking for satisfies the Riemann BVP on an open contour oriented from extremity  $a$  to extremity  $b$  and that  $\Phi$  is bounded at the vicinity of  $a$  and  $b$ . More generally, one could look for the solutions admitting singularities integrable at the ends. We denote  $\delta$ ,  $\Delta$ ,  $\rho_a$  and  $\rho_b$  such that

$$G(a) = \rho_a e^{i\delta}, \quad \Delta = [\arg G]_{\mathcal{L}} \quad \text{et} \quad G(b) = \rho_b e^{i(\delta+\Delta)}$$

choosing  $-2\pi < \delta \leq 0$  and the corresponding determination of the logarithm  $\log G$ . We define the index

$$\chi := \left\lfloor \frac{\delta + \Delta}{2\pi} \right\rfloor.$$

**Proposition 20** (Solution of Riemann BVP on an open contour). *Let us define*

$$\Gamma(z) := \frac{1}{2i\pi} \int_{\mathcal{L}} \frac{\log(G(t))}{t-z} dt, \quad z \notin \mathcal{L}.$$

The function

$$X(z) := (z-b)^{-\chi} e^{\Gamma(z)}$$

is a solution of the homogeneous Riemann BVP and is bounded at the extremities. This solution is of order  $-\chi$  at infinity. If  $\Phi$  is a solution of the homogeneous problem, it may be written as  $\Phi(z) = X(z)P(z)$  where  $P$  is a polynomial. We define

$$\varphi(z) := \frac{1}{2i\pi} \int_{\mathcal{L}} \frac{g(t)}{X^+(t)(t-z)} dt, \quad z \notin \mathcal{L}.$$

The solutions of the Riemann BVP bounded at the extremities are the functions

$$\Phi(z) = X(z)\varphi(z) + X(z)P_{\chi}(z)$$

where  $P_{\chi}$  is a polynomial of degree  $\chi$  for  $\chi \geq 0$  and  $P_{\chi} = 0$  for  $\chi \leq -1$ .

*Proof.* Due to Remark 14 at the vicinity of an extremity  $c$  we have

$$e^{\Gamma(z)} = (z-c)^{\lambda_c} e^{\Gamma_c(z)}$$

for  $\Gamma_c$  a holomorphic function at the vicinity of  $c$  and

$$\lambda_a = -\frac{\delta}{2\pi} + i\frac{\log \rho_a}{2\pi} \quad \text{and} \quad \lambda_b = \frac{\delta + \Delta}{2\pi} - i\frac{\log \rho_b}{2\pi}.$$

Since  $\delta \leq 0$  the function  $e^{\Gamma(z)}$  is bounded at  $a$ . Furthermore, we notice that the function  $X(z) = (z-b)^{-\chi} e^{\Gamma(z)}$  is bounded at  $b$  (and at  $a$ ). The rest of the proof is similar to the closed contour case.  $\square$

**B.3. Carleman boundary value problem.** The Carleman BVP is a boundary problem with a shift noted  $\alpha(t)$ , which is a homeomorphism from the contour  $\mathcal{L}$  on itself such that its derivative does not cancel and that satisfies Hölder's condition. Most of the time the condition  $\alpha(\alpha(t)) = t$  is satisfied and we say that  $\alpha$  is a Carleman automorphism of  $\mathcal{L}$ . In this paper the shift function is the complex conjugation.

**Definition 21** (Carleman BVP). *The function  $\Phi$  satisfies a Carleman BVP on the closed contour  $\mathcal{L}$  (or having its two extremities at infinity, as in this paper) if:*

- $\Phi$  is holomorphic on the whole domain  $\mathcal{L}^+$  bounded by  $\mathcal{L}$  and continuous on  $\mathcal{L}$ ;
- $\Phi$  satisfies the boundary condition

$$\Phi(\alpha(t)) = G(t)\Phi(t) + g(t), \quad t \in \mathcal{L},$$

where  $G$  and  $g$  are two functions defined on  $\mathcal{L}$ .

We will assume that  $G$  and  $g \in \mathbb{H}_{\mu}(\mathcal{L})$  and that  $G$  does not cancel on  $\mathcal{L}$ . When  $g = 0$  the Riemann BVP is said to be homogeneous.

To solve the Carleman BVP we introduce a conformal gluing function. The following result establishes the existence of such functions.

**Proposition 22** (Conformal gluing function). *Let  $\alpha$  be a Carleman automorphism of the curve  $\mathcal{L}$ . It exists  $W$ , a function*

- *holomorphic on  $\mathcal{L}^+$  deprived of one point where  $W$  has a simple pole;*
- *satisfying the gluing condition*

$$W(\alpha(t)) = W(t), \quad t \in \mathcal{L}.$$

*Such a function  $W$  establishes a conformal transform (holomorphic bijection) from  $\mathcal{L}^+$  to the complex plane deprived of a smooth open contour  $\mathcal{M}$ . This conformal gluing function admits two fixed points  $A$  and  $B$  of image  $a$  and  $b$  which are the extremities of  $\mathcal{M}$ .*

If we find such a conformal gluing function, we can transform the Carleman BVP into a Riemann BVP. We orient  $\mathcal{M}$  from  $a$  to  $b$  choosing it such that the orientation of  $\mathcal{L}$  be conserved by  $W$ . We then denote  $W^{-1}$  the reciprocal of  $W$  and  $(W^{-1})^+$  its left limit and  $(W^{-1})^-$  its right limit on  $\mathcal{M}$ . See Figure 10. For  $t$  on the arc  $\mathcal{L}$  oriented from  $B$  to  $A$ , these functions satisfy

$$(W^{-1})^+(W(t)) = \alpha(t) \quad \text{and} \quad (W^{-1})^-(W(t)) = t.$$

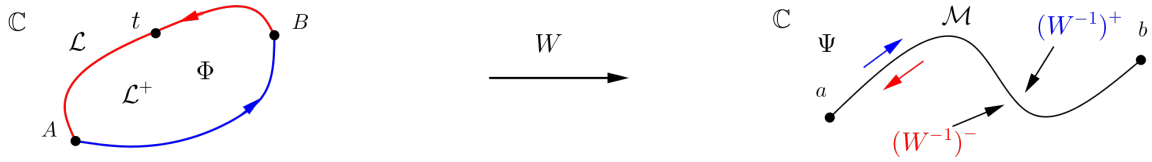


FIGURE 10. Conformal gluing function from  $\mathcal{L}^+$  to  $\mathbb{C} \setminus \mathcal{M}$

Let  $\Phi$  be a solution of the Carleman BVP, we define the function  $\Psi$  such that

$$\Psi(W(z)) := \Phi(z), \quad z \in \mathcal{L}^+.$$

We then have

$$\Psi(z) = \Phi(W^{-1}(z)), \quad z \in \mathbb{C} \setminus \mathcal{M}$$

and the limits on the left and on the right of  $\Psi$  on  $\mathcal{M}$  are

$$\Psi^+(t) = \Phi((W^{-1})^+(t)) \quad \text{and} \quad \Psi^-(t) = \Phi((W^{-1})^-(t)), \quad t \in \mathcal{M}.$$

Let

$$H(t) = G((W^{-1})^-(t)) \quad \text{and} \quad h(t) = g((W^{-1})^-(t)), \quad t \in \mathcal{M}.$$

**Proposition 23.** *The function  $\Psi$  satisfies the following Riemann BVP associated to the contour  $\mathcal{M}$  and to the functions  $H$  and  $h$ :*

- *$\Psi$  is sectionally holomorphic on  $\mathbb{C} \setminus \mathcal{M}$ ;*
- *$\Psi$  satisfies the boundary condition*

$$\Psi^+(t) = H(t)\Psi^-(t) + h(t), \quad t \in \mathcal{M}.$$

*Proof.* The proof derives from Definition 21, from Proposition 22 and from the above notations. □

As  $\Phi = \Psi \circ W$ , to solve the Carleman BVP of Definition 21, it is enough to determine the conformal gluing function  $W$  and to find  $\Psi$  thanks to Section B.2 which explains how to solve the Riemann BVP Proposition 23. Let us define

$$X(W(z)) := (W(z) - b)^{-x} \exp\left(\frac{1}{2i\pi} \int_{\mathcal{L}_d} \log(G(t)) \frac{W'(t)}{W(t) - W(z)} dt\right), \quad z \notin \mathcal{L}$$

and

$$\varphi(W(z)) := \frac{-1}{2i\pi} \int_{\mathcal{L}_d} \frac{g(t)}{X^+(W(t)) (W(t) - W(z))} dt, \quad z \notin \mathcal{L},$$

where we denote  $\mathcal{L}_d = (W^{-1})^-(\mathcal{M})$  (the red curve on the left picture of Figure 10). We obtain the following proposition.

**Proposition 24** (Solution of Carleman BVP). *The solutions of the Carleman BVP of Definition 21 are given by*

$$\Phi(z) = X(W(z))\varphi(W(z)) + X(W(z))P_\chi(W(z)) \quad (30)$$

where  $P_\chi$  is a polynomial of degree  $\chi$  for  $\chi \geq 0$  and where  $P_\chi = 0$  for  $\chi \leq -1$ . For  $\chi < -1$  the solution to the non-homogeneous problem exists if and only if some solubility conditions of the form (29) are satisfied.

### APPENDIX C. GREEN'S FUNCTIONS IN DIMENSION ONE

This appendix is intended to be an educational approach that illustrates in a simple case the analytical method and the link between Green's functions and partial differential equations. In this section we study  $X_t$  a Brownian motion (in dimension one) with drift reflected at 0. We are looking for Green's functions of  $X_t$ . This problem has already been studied in Chen [12]. Here we solve this question thanks to an analytic study which is much simpler than in dimension two.

**Definition 25** (Reflected Brownian motion with drift). *We define  $X_t$ , a reflected Brownian motion of variance  $\sigma \geq 0$ , of drift  $\mu$  and starting from  $x_0 \in \mathbb{R}_+$ , as the semi-martingale satisfying the equation*

$$X_t = x_0 + \sqrt{\sigma}W_t + \mu t + L_t,$$

where  $L_t$  is the (symmetric) local time in 0 of  $X_t$  and  $W_t$  is a standard Brownian motion.

**Definition 26** (Green measures). *Let  $A \subset \mathbb{R}$  be a measurable set. The Green measure of the process  $X$  starting from  $x_0$  is defined by*

$$G_A^{x_0} = \mathbb{E}_{x_0} \left( \int_0^\infty \mathbf{1}_A(X_s) ds \right) = \int_0^\infty \mathbb{P}_{x_0}(X_s \in A) ds.$$

Its density w.r.t the Lebesgue measure is denoted  $g(x_0, x)$  and is called the Green's function. The Green's function satisfies

$$g(x_0, x) = \int_0^\infty p(t, x_0, x) dt,$$

where  $p(t, x_0, x)$  is the transition density of the process  $X$ .

If  $\mu > 0$  the process is transient and in this case if  $A$  is bounded we have  $G_A^{x_0} < \infty$ . Furthermore notice that if  $f : \mathbb{R} \rightarrow \mathbb{R}_+$  is measurable, by Fubini's theorem we have

$$\int_{\mathbb{R}} f(x) g(x_0, x) dx = \mathbb{E}_{x_0} \left[ \int_0^\infty f(X_t) dt \right].$$

**Proposition 27** (Green's functions and Laplace transform). *If  $\mu > 0$ , for all  $x \in \mathbb{R}_+$  the Green's function of  $X$  is equal to*

$$g(x_0, x) = \frac{1}{\mu} e^{\frac{2\mu}{\sigma}(x-x_0)} \mathbf{1}_{\{0 \leq x < x_0\}} + \frac{1}{\mu} \mathbf{1}_{\{x_0 \leq x\}} \quad (31)$$

and its Laplace transform  $\psi^{x_0}$  is equal to

$$\psi^{x_0}(\theta) := \int_0^\infty e^{\theta x} g(x_0, x) dx = -\frac{e^{\theta x_0} + \theta \frac{\sigma}{2\mu} e^{-\frac{2\mu}{\sigma} x_0}}{\mu\theta + \frac{1}{2}\sigma\theta^2}.$$

*Proof.* As in the two dimensional case, we are going to determine the Laplace transform of Green's function thanks to a functional equation. If  $f$  is a function  $\mathcal{C}^2$ , Itô formula gives

$$\begin{aligned} f(X_t) &= f(x_0) + \int_0^t f'(X_s)dX_t + \frac{1}{2} \int_0^t f''(X_s)d\langle X \rangle_s \\ &= f(x_0) + \int_0^t f'(X_s)(dW_t + \mu dt + dL_t) + \frac{1}{2} \int_0^t f''(X_s)\sigma ds. \end{aligned}$$

For  $f(x) = e^{\theta x}$  and  $\theta < 0$  we take the expectation of this formula and we obtain

$$\mathbb{E}_{x_0}[e^{\theta X_t}] = e^{\theta x_0} + \underbrace{\theta \mathbb{E}_{x_0} \left[ \int_0^t e^{\theta X_s} dW_s \right]}_{=0 \text{ because it is the expectation of a martingale}} + (\mu\theta + \frac{1}{2}\sigma\theta^2)\mathbb{E}_{x_0} \left[ \int_0^t e^{\theta X_s} ds \right] + \theta\mathbb{E}_{x_0} \left[ \int_0^t e^{\theta X_s} dL_s \right].$$

As  $\theta < 0$  and as  $X_t \xrightarrow[t \rightarrow \infty]{} \infty$  (as  $\mu > 0$ ), we have  $\lim_{t \rightarrow \infty} \mathbb{E}[e^{\theta X_t}] = 0$ . Let  $t$  go to infinity. We obtain

$$\begin{aligned} 0 &= e^{\theta x_0} + (\mu\theta + \frac{1}{2}\sigma\theta^2)\mathbb{E}_{x_0} \left[ \int_0^\infty e^{\theta X_s} ds \right] + \theta\mathbb{E}_{x_0} \left[ \int_0^\infty e^{\theta X_s} dL_s \right] \\ &= e^{\theta x_0} + (\mu\theta + \frac{1}{2}\sigma\theta^2)\psi^{x_0}(\theta) + \theta\mathbb{E}L_\infty \end{aligned}$$

as  $e^{\theta X_s} = 1$  on the support of  $dL_s$  which is the set  $\{s \geq 0 : X_s = 0\}$ . By evaluating at  $\theta^* = -2\mu/\sigma$  we find that  $\mathbb{E}L_\infty = -\frac{e^{\theta^* x_0}}{\theta^*} = \frac{\sigma}{2\mu}e^{-\frac{2\mu}{\sigma}x_0}$ . We obtain

$$\psi^{x_0}(\theta) = -\frac{e^{\theta x_0} + \theta \frac{\sigma}{2\mu}e^{-\frac{2\mu}{\sigma}x_0}}{\mu\theta + \frac{1}{2}\sigma\theta^2}.$$

Inverting this Laplace transform we find formula (31). □

**Remark 28** (Partial differential equation). Is is easy to verify that  $g(x_0, x)$  satisfies the following partial differential equation

$$\begin{cases} \frac{\sigma}{2} \frac{\partial^2}{\partial x^2} g(x_0, x) - \mu \frac{\partial}{\partial x} g(x_0, x) = -\delta_{x_0}(x), \\ \sigma \frac{\partial}{\partial x} g(x_0, 0) - 2\mu g(x_0, 0) = 0, \end{cases} \tag{32}$$

which is similar to equation (3) in dimension two.

#### REFERENCES

[1] Azéma, J., Kaplan-Duflo, M., and Revuz, D. (1966). Récurrence fine des processus de Markov. *Annales de l'I.H.P. Probabilités et statistiques*, 2(3):185–220.

[2] Azéma, J., Kaplan-Duflo, M., and Revuz, D. (1967). Mesure invariante sur les classes récurrentes des processus de Markov. *Zeitschrift für Wahrscheinlichkeitstheorie und Verwandte Gebiete*, 8(3):157–181.

[3] Baccelli, F. and Fayolle, G. (1987). Analysis of models reducible to a class of diffusion processes in the positive quarter plane. *SIAM Journal on Applied Mathematics*, 47(6):1367–1385.

[4] Bernardi, O., Bousquet-Mélou, M., and Raschel, K. (2016). Counting quadrant walks via Tutte's invariant method. In *28th International Conference on Formal Power Series and Algebraic Combinatorics (FPSAC 2016)*, Discrete Math. Theor. Comput. Sci. Proc., AK, pages 203–214. Assoc. Discrete Math. Theor. Comput. Sci., Nancy.

[5] Bousquet-Mélou, M., Elvey Price, A., Franceschi, S., Hardouin, C., and Raschel, K. (2018). Algebraic nature of the SRBM laplace transform. *arxiv:math/*. arXiv:.

[6] Bousquet-Mélou, M. and Mishna, M. (2010). Walks with small steps in the quarter plane. In *Algorithmic probability and combinatorics*, volume 520 of *Contemp. Math.*, pages 1–39. Amer. Math. Soc., Providence, RI.



- [7] Bramson, M. (2011). Positive recurrence for reflecting Brownian motion in higher dimensions. *Queueing Syst.*, 69(3-4):203–215.
- [8] Bramson, M., Dai, J., and Harrison, J. (2010). Positive recurrence of reflecting Brownian motion in three dimensions. *Ann. Appl. Probab.*, 20(2):753–783.
- [9] Bruggeman, C. and Sarantsev, A. (2018). Multiple collisions in systems of competing Brownian particles. *Bernoulli*, 24(1):156–201.
- [10] Burdzy, K., Chen, Z.-Q., Marshall, D., and Ramanan, K. (2017). Obliquely reflected Brownian motion in non-smooth planar domains. *Ann. Probab.*, 45(5):2971–3037.
- [11] Chen, H. (1996). A sufficient condition for the positive recurrence of a semimartingale reflecting Brownian motion in an orthant. *Ann. Appl. Probab.*, 6(3):758–765.
- [12] Chen, H. (1999). Basic adjoint relation for transient and stationary analysis of some Markov processes. *Annals of Operations Research*, 87:273–303.
- [13] Dai, H. and Zhao, Y. Q. (2018). Stationary distributions for two-dimensional sticky Brownian motions: Exact tail asymptotics and extreme value distributions. *arxiv:math/1806.04660*. arXiv: 1806.04660.
- [14] Dai, J. (1990). *Steady-state analysis of reflected Brownian motions: Characterization, numerical methods and queueing applications*. ProQuest LLC, Ann Arbor, MI. Thesis (Ph.D.)—Stanford University.
- [15] Dai, J. and Harrison, J. (2012). Reflecting Brownian motion in three dimensions: a new proof of sufficient conditions for positive recurrence. *Math. Methods Oper. Res.*, 75(2):135–147.
- [16] Dai, J. G. and Harrison, J. M. (1992). Reflected Brownian motion in an orthant: numerical methods for steady-state analysis. *The Annals of Applied Probability*, 2(1):65–86.
- [17] Dai, J. G. and Miyazawa, M. (2011). Reflecting Brownian motion in two dimensions: Exact asymptotics for the stationary distribution. *Stochastic Systems*, 1(1):146–208.
- [18] Dai, J. G. and Miyazawa, M. (2013). Stationary distribution of a two-dimensional SRBM: geometric views and boundary measures. *Queueing Systems*, 74(2-3):181–217.
- [19] Dieker, A. B. and Moriarty, J. (2009). Reflected Brownian motion in a wedge: sum-of-exponential stationary densities. *Electronic Communications in Probability*, 14:1–16.
- [20] Dubédat, J. (2004). Reflected planar Brownian motions, intertwining relations and crossing probabilities. *Ann. Inst. H. Poincaré Probab. Statist.*, 40(5):539–552.
- [21] Dupuis, P. and Williams, R. J. (1994). Lyapunov functions for semimartingale reflecting Brownian motions. *The Annals of Probability*, 22(2):680–702.
- [22] Fayolle, G. and Iasnogorodski, R. (1979). Two coupled processors: The reduction to a Riemann-Hilbert problem. *Zeitschrift für Wahrscheinlichkeitstheorie und Verwandte Gebiete*, 47(3):325–351.
- [23] Fayolle, G., Iasnogorodski, R., and Malyshev, V. (2017). *Random Walks in the Quarter-Plane: Algebraic Methods, Boundary Value Problems, Applications to Queueing Systems and Analytic Combinatorics*. Springer Publishing Company, Incorporated, 2nd edition.
- [24] Foddy, M. E. (1984). *Analysis of Brownian motion with drift, confined to a quadrant by oblique reflection (diffusions, Riemann-Hilbert problem)*. ProQuest LLC, Ann Arbor, MI. Thesis (Ph.D.)—Stanford University.
- [25] Foschini, G. (1982). Equilibria for diffusion models of pairs of communicating computers—symmetric case. *IEEE Trans. Inform. Theory*, 28(2):273–284.
- [26] Franceschi, S. and Kourkova, I. (2017). Asymptotic expansion of stationary distribution for reflected brownian motion in the quarter plane via analytic approach. *Stochastic Systems*, 7(1):32–94.
- [27] Franceschi, S. and Raschel, K. (2017). Tutte’s invariant approach for Brownian motion reflected in the quadrant. *ESAIM Probab. Stat.*, 21:220–234.
- [28] Franceschi, S. and Raschel, K. (2019). Integral expression for the stationary distribution of reflected brownian motion in a wedge. *Bernoulli Journal*. hal-01495788. to appear.

- [29] Gakhov, F. D. (1966). *Boundary value problems*. Translation edited by I. N. Sneddon. Pergamon Press, Oxford-New York-Paris; Addison-Wesley Publishing Co., Inc., Reading, Mass.-London.
- [30] Harrison, J. and Reiman, M. (1981a). On the distribution of multidimensional reflected Brownian motion. *SIAM J. Appl. Math.*, 41(2):345–361.
- [31] Harrison, J. and Reiman, M. (1981b). Reflected Brownian motion on an orthant. *Ann. Probab.*, 9(2):302–308.
- [32] Harrison, J. M. and Hasenbein, J. J. (2009). Reflected Brownian motion in the quadrant: tail behavior of the stationary distribution. *Queueing Systems*, 61(2-3):113–138.
- [33] Harrison, J. M. and Williams, R. J. (1987a). Brownian models of open queueing networks with homogeneous customer populations. *Stochastics*, 22(2):77–115.
- [34] Harrison, J. M. and Williams, R. J. (1987b). Multidimensional reflected Brownian motions having exponential stationary distributions. *The Annals of Probability*, 15(1):115–137.
- [35] Hobson, D. G. and Rogers, L. C. G. (1993). Recurrence and transience of reflecting Brownian motion in the quadrant. In *Mathematical Proceedings of the Cambridge Philosophical Society*, volume 113, pages 387–399. Cambridge Univ Press.
- [36] Kager, W. (2005). Reflected brownian motion in generic triangles and wedges. *arXiv:math/0410007v3*. arXiv: 0410007.
- [37] Kourkova, I. and Raschel, K. (2011). Random walks in  $(\mathbb{Z}_+)^2$  with non-zero drift absorbed at the axes. *Bulletin de la Société Mathématique de France*, 139:341–387.
- [38] Kourkova, I. and Raschel, K. (2012). On the functions counting walks with small steps in the quarter plane. *Publications mathématiques de l'IHES*, 116(1):69–114.
- [39] Kourkova, I. A. and Malyshev, V. A. (1998). Martin boundary and elliptic curves. *Markov Processes and Related Fields*, 4(2):203–272.
- [40] Le Gall, J.-F. (1987). Mouvement brownien, cônes et processus stables. *Probab. Theory Related Fields*, 76(4):587–627.
- [41] Lépingle, D. (2017). A two-dimensional oblique extension of Bessel processes. *Markov Process. Related Fields*, 23(4):233–266.
- [42] Litvinchuk, G. S. (2000). *Solvability Theory of Boundary Value Problems and Singular Integral Equations with Shift*. Springer Netherlands, Dordrecht.
- [43] Malyshev, V. A. (1972). An analytic method in the theory of two-dimensional positive random walks. *Sibirsk. Mat. Ž.*, 13:1314–1329, 1421.
- [44] Muskhelishvili, N. (1972). *Singular integral equations*. Wolters-Noordhoff Publishing, Groningen. Boundary problems of functions theory and their applications to mathematical physics, Revised translation from the Russian, edited by J. R. M. Radok, Reprinted.
- [45] Raschel, K. (2014). Random walks in the quarter plane, discrete harmonic functions and conformal mappings. *Stochastic Processes and their Applications*, 124(10):3147 – 3178.
- [46] Raschel, K. and Tarrago, P. (2018). Martin boundary of random walks in convex cones. *ArXiv: 1803.09253*.
- [47] Reiman, M. I. (1984). Open queueing networks in heavy traffic. *Math. Oper. Res.*, 9:441–458.
- [48] Revuz, D. and Yor, M. (1999). *Continuous Martingales and Brownian Motion*. Springer, 3rd ed edition.
- [49] Sarantsev, A. (2017a). Infinite systems of competing Brownian particles. *Ann. Inst. Henri Poincaré Probab. Stat.*, 53(4):2279–2315.
- [50] Sarantsev, A. (2017b). Reflected Brownian motion in a convex polyhedral cone: tail estimates for the stationary distribution. *J. Theoret. Probab.*, 30(3):1200–1223.
- [51] Varadhan, S. R. and Williams, R. J. (1985). Brownian motion in a wedge with oblique reflection. *Communications on pure and applied mathematics*, 38(4):405–443.
- [52] Williams, R. (1985a). Reflected Brownian motion in a wedge: semimartingale property. *Z. Wahrsch. Verw. Gebiete*, 69(2):161–176.
- [53] Williams, R. J. (1985b). Recurrence classification and invariant measure for reflected Brownian motion in a wedge. *Annals of Probability*, 13:758–778.

- [54] Williams, R. J. (1995). Semimartingale reflecting Brownian motions in the orthant. *Stochastic Networks*, 13.

LABORATOIRE DE PROBABILITÉS, STATISTIQUE ET MODÉLISATION, SORBONNE UNIVERSITÉ, 4 PLACE JUSSIEU,  
75252 PARIS CEDEX 05, FRANCE

*E-mail address:* `Sandro.Franceschi@upmc.fr`