



HAL
open science

On the validity of neutral gas temperature by emission spectroscopy in micro-discharges close to atmospheric pressure

Sylvain Iséni, Ronan Michaud, Philippe Lefaucheu, Goran Sretenović, Volker Schulz-von Der Gathen, Remi Dussart

► To cite this version:

Sylvain Iséni, Ronan Michaud, Philippe Lefaucheu, Goran Sretenović, Volker Schulz-von Der Gathen, et al.. On the validity of neutral gas temperature by emission spectroscopy in micro-discharges close to atmospheric pressure. *Plasma Sources Science and Technology*, 2019, 28 (6), pp.065003. 10.1088/1361-6595/ab1dfb . hal-02117169

HAL Id: hal-02117169

<https://hal.science/hal-02117169v1>

Submitted on 14 Jul 2019

HAL is a multi-disciplinary open access archive for the deposit and dissemination of scientific research documents, whether they are published or not. The documents may come from teaching and research institutions in France or abroad, or from public or private research centers.

L'archive ouverte pluridisciplinaire **HAL**, est destinée au dépôt et à la diffusion de documents scientifiques de niveau recherche, publiés ou non, émanant des établissements d'enseignement et de recherche français ou étrangers, des laboratoires publics ou privés.

On the validity of neutral gas temperature by emission spectroscopy in micro-discharges close to atmospheric pressure

S Iseni¹, R Michaud¹, P Lefauchaux¹, G B Sretenović²,
V Schulz-von der Gathen³ and R Dussart¹

¹GREMI-(Groupe de Recherches sur l'Énergétique des Milieux Ionisés) - UMR 7344 Université d'Orléans/CNRS, France.

²Faculty of Physics, University of Belgrade, Serbia.

³Chair of Experimental Physics II, Ruhr-Universität Bochum, Germany.

E-mail: sylvain.iseni@univ-orleans.fr

Abstract. The neutral gas temperature (T_g) of a single micro-hollow cathode discharge (MHCD) elaborated on silicon wafer is investigated. The MHCD is continuously powered in DC yielding a plasma in He, Ar and N₂ gases close to atmospheric pressure. Values of T_g determined by means of optical emission spectroscopy inside and in the vicinity of a single cavity of 100 μm diameter. In this work, the use of the resonant broadening to infer T_g is thoroughly reconsidered taking into account the reevaluation of an empirical coefficient as well as including the weaker contribution of the Van der Waals interaction in the line profile analysis. T_g is found to be around 360 K in He while in Ar it ranges from 460 K to 860 K depending on the current. A temperature gradient is observed between the cavity and the surrounding gas, which is correlated with the design of the MHCD reactor.

A second approach involves the study of the relative rotational population distributions of several N₂(C-B) vibrational bands to infer the rotational temperature (T_{rot}). While the latter is commonly assumed to approximated T_g , its validity will be discussed based on experimental results. Discrepancies between T_{rot} from different vibrational bands as well as with values found with the resonant broadening are investigated using different operating regimes of the MHCD. The validity of both approaches will be discussed supported by a comprehensive evaluation of the T_g and T_{rot} uncertainty estimations. The analysis of resonant atomic line profile appears to be a reliable and accurate method to measure T_g in *absolute* room temperature atmospheric pressure plasma sources used in industrial processes as well as in environmental and biomedical applications.

[doi:10.1088/1361-6595/ab1dfb](https://doi.org/10.1088/1361-6595/ab1dfb)

Submitted to: *Plasma Sources Sci. Technol.*

1. Introduction

Room temperature atmospheric pressure plasma sources in essence belong to the category of micro-plasmas with at least one of their dimension in the micrometer scale [1]. Depending on the timescale of the electric excitation, the gas and the design of the source, the plasma is either diffused or filamentary, transient or continuous. Micro-hollow cathode discharge (MHCD) are plasma sources with all their dimensions ranging in the micro-meter scale. The concept of MHCD was introduced in the middle of the 90's and has been extensively investigated over the last two decades [2, 3]. This plasma source benefits from multiple advantages such as avoiding cost intensive vacuum techniques, the compactness, the integration ease to adapt to existing systems and the relatively low neutral gas temperature. To this, one can add the high adjustability of the source to produce a localized plasma in the micrometer size on a time scale ranging from tens of nanoseconds to continuous time. This tunability is in favor of scaling multiple plasma parameters related to the non-equilibrium plasma chemistry and the emission of energetic radiations used to treat surfaces or gas volumes. As a real asset, MHCD reactor can be combined to form large arrays of micro-plasma allowing to adapt the source to scalable workflows. The innovative potential of MHCD reactors has led to the development of the first uniform closed-packed arrays of micro-plasma jets propagating into a volume of atmospheric air [4]. Later the concept was extended to typical capillary plasma jet geometries [5] generating guided ionization waves [6] –or guided streamers [7]– to produce multi-jet plasmas from a dielectric capillary, originally named for *plasma thorn* [8]. Consequently, a large amount of applications are taking advantage of MHCD properties. For instance in the field of biomedical applications, surface activation, pollutant degradation or reforming, lighting, reactive oxygen and nitrogen species productions [9].

The determination of the gas temperature is of crucial interest to compute reaction rates of the plasma kinetic chemistry but also to choose and structure the materials used to realize the MHCD. Furthermore, solid knowledge of the neutral gas temperature supports the intention to better understand fundamental processes governing the plasma mechanisms as well as optimizing the source to the targeted applications. The accurate and reliable measurements of the neutral gas temperature can be a real challenge while the temperature values are close to the ambient. Last but not least, thermal effects are often involved in plasma diagnostics, which means that knowing the neutral gas temperature is to some extent necessary to interpret raw data having a thermal dependence (i.e. determination of chemical species concentration). Due to the microscopic size, optical spectroscopy is a method of choice to diagnose the discharge. Investigations of the neutral gas temperature in MHCDs have already been studied involving different approaches. For instance this has been realized through the analysis of ro-vibrational bands of molecules of N_2 [10, 11, 12, 13], N_2^+ [14] and OH [15]. One reports on MHCDs gas temperature by studying the profile of an atomic transition obtained by optical emission spectroscopy [15] or by laser absorption spectroscopy [16].

In this study, one focuses on the characterization of the neutral gas temperature in a single MHCD reactor supplied with DC excitation in He, Ar and N_2 gases close to atmospheric pressure. Taking advantage of MEMS fabrication technologies, MHCD reactors can be manufactured with significantly reduced electrode gap allowing for lowering the breakdown voltage. Starting from a silicon wafer, the micro-cavity is shaped by successive operations involving well controlled processes developed in

microelectronics. The study of the gas temperature is carried out by means of space resolved optical emission spectroscopy. Two experimental ways are investigated depending on the gas mixture (He, Ar and N_2). As a first approach, the profile of resonant atomic lines taking into account the Van der Waals broadening is thoroughly analyzed to infer the gas temperature. For instance, the use of collisional line broadening was extensively studied in surfatron (microwave plasma source) where resonant, Van der Waals and Doppler contributions are investigated due to the relatively high gas temperature [17, 18]. While the broadening of resonant lines is particularly pronounced in room temperature atmospheric pressure plasmas, their study to measure the neutral gas temperature is often ignored. A complementary approach based on the determination of the N_2 (C-B) band rotational temperature is considered for pure N_2 and He discharges. To properly exploit information from emission spectroscopy, particular attention will be paid to estimate and discuss the uncertainties introduced by the complex formalisms involving tangled spectroscopic constants and to determine the reproducibility of the observations. The validity and limits of each diagnostic methods will be discussed based on the experimental results. Subsequently, temperature values will be measured within the cavity and at the vicinity of the opening, near the outer electrode. A comparison of the thermal properties of the MHCD will be presented and discussed depending on the electrical parameters and the nature of the gas.

2. Experimental setup

This section is divided in two parts: the plasma source and the diagnostics implemented around the MHCD to monitor and to measure the electrical properties of the discharge. The optical emission of the plasma is also collected and analyzed.

2.1. Silicon based MHCD reactor

The micro-cavity reactors based on silicon wafer are manufactured in the laboratory by means of MEMS fabrication techniques. Such technologies offer the advantage of designing versatile, accurate and reproducible micro structures in terms of geometry and material. The design of the MHCD used in this work has been introduced in a prior work [19] and consists of an axisymmetric isotropic cavity etched in a Si wafer of typically $500\ \mu\text{m}$ thick. Figure 1 shows a schematic of the micro-cavity reactor.

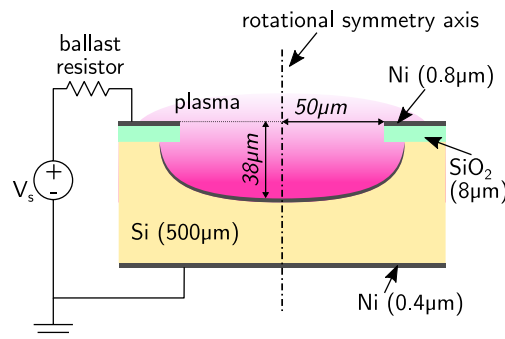


Figure 1. Schematic of a single silicon based MHCD reactor produced by MEMS manufacturing technology.

The latter has a circular opening diameter of $100\ \mu\text{m}$ and a depth of $30\ \mu\text{m}$. The Si cavity is electrically isolated by a thin layer of $8\ \mu\text{m}$ of silicon dioxide (SiO_2) formed by thermal oxidation on the wafer surface. The SiO_2 is partly covered with a thin layer of nickel (Ni) to act as an electrode. The electrode pattern around the cavity opening is defined with lithography techniques before the plasma vapor deposition (PVD) process.

Newly introduced in [20, 19], a metallic layer covers the inner surface of the isotropic cavity giving the advantage of a better electrical conductivity of the plasma material interface while protecting the Si surface from ion bombardment, strong implantation and a potential oxidation of Si. The second electrode consists of a metal layer (typically Ni) formed at the back of the wafer by a PVD process. A ballast resistor ranging from $30\ \text{k}\Omega$ to $1\ \text{M}\Omega$ is connected in series to the MHCD reactor and is supplied by a stabilized DC generator (Heinzinger PNC 1500 100 μm p).

In operation, the MHCD is placed within a controlled chamber pumped to a pressure below 10^{-5} mbar. Then, the volume is filled up with high purity Ar, He or N_2 (Alphagaz 2, Air Liquide). A capacitive pressure gauge is used to accurately set the discharge conditions to a static gas pressure. Considering the present design of the MHCD reactor shown in figure 1 and depending on the gas and the pressure, typical voltage and current values used to operate the discharge range from 150 V to 350 V and from $4\ \mu\text{A}$ to $650\ \mu\text{A}$ respectively.

2.2. Plasma diagnostics

To diagnose the discharge, electrical and optical measurements are performed simultaneously as shown in figure 2. To measure the discharge voltage (V_{MHCD})

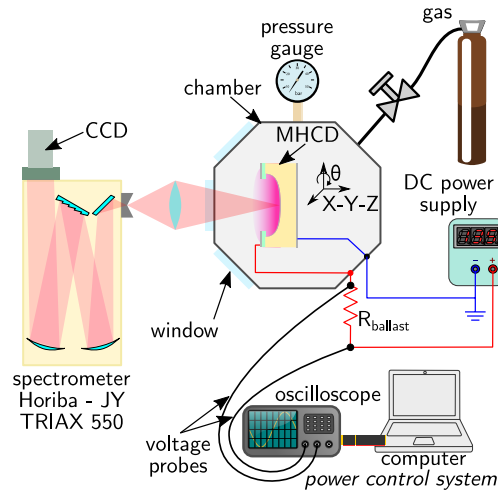


Figure 2. Synoptic of the experimental setup used for the space-resolved spectroscopy and electrical diagnostics. The MHCD is mounted on stage moving in three orthogonal direction X-Y-Z and can be rotated with an angle $\theta=90$ deg.

and the current going through the cavity (I_{MHCD}), two voltage probes (Tek P5100, Tektronix) are connected to the terminals of R_{ballast} . Both signals are acquired with an oscilloscope (DPO 2024B 200 MHz, Tektronix) and recorded with a computer. Each

voltage waveform is processed to correct for the bias error induced by the impedance of the probes. In DC excitation regime, the power dissipated in the plasma is found according to $P_{\text{MHCD}} = I_{\text{MHCD}} \cdot V_{\text{MHCD}}$. To monitor the discharge, a computer program has been developed to measure in real-time each electrical parameter while adjusting the DC generator. This gives the advantage to set and to control I_{MHCD} and P_{MHCD} accurately for reproducible conditions.

Optical measurements are carried out with an imaging spectrometer (TRIAX 550, Horiba J-Y) of 0.55 m focal length and equipped with two exchangeable gratings. A cooled CCD camera (DU440-BU, Andor) is used to record the spectra. The instrumental function is measured with the help of a HeNe laser and a neon Geissler tube and fits to a gaussian profile with a full-width at half maximum (FWHM) of 34 ± 1 pm at 632.8 nm and 23 ± 1 pm at 375.4 nm for the 1800 g/mm and 2400 g/mm gratings respectively. The entrance slit width was set to 30 μm . The light emitted from the micro-cavity passes through the quartz window of the chamber. It is then collected with an optical system with a magnification of 1.5 placed in front of the spectrometer slit. Achromatic and aspherical lenses are utilized to minimize the optical aberrations on the image of the micro-plasma in order to have a sufficient spatial resolution. Figure 3 presents an image of the plasma produced by the MHCD and captured with

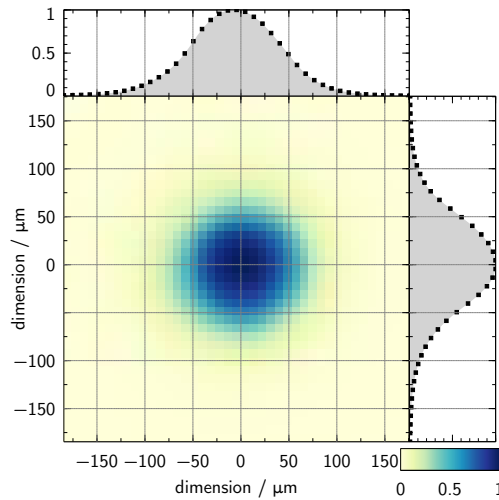


Figure 3. Front face MHCD imaged on the CCD of the spectrometer. The color scale is linear and normalized to the maximum intensity of the picture. The spectrometer is set at zero diffraction order with a large slit width (2.0 mm). The curves at the top and on the right side are intensity profiles of the sections taken along each axis at 0 μm . Discharge in He at 666 mbar, $I_{\text{MHCD}}=122 \mu\text{A}$.

the imaging spectroscopic bench. Most of the light originates from the central region of the plasma located within the cavity. The recorded image resembles a perfect disc due to the axisymetry of the micro-cavity meaning that the optical aberrations are reduced below the spatial resolution of the CDD camera. Both intensity profiles taken at position 0 μm of each axis validate the excellent uniformity of the image. Thus this optical diagnostic system has the capabilities to analyze the discharge emission originating from the plasma volume along the micro-cavity diameter.

3. Optical emission spectral analysis

Optical diagnostics provide a powerful and convenient way to measure plasma parameters such as particle number densities and temperatures. In this section, two different approaches are described in order to determine experimentally the neutral gas temperature of the MHCD.

3.1. Line broadening

The study of atomic line shifting and broadening is a common approach to investigate discharges since the perturbation of a line from its natural broadening often results from multiple mechanisms inherent in the properties of the plasma. Experimental observations and theoretical descriptions of line shifting and broadening phenomena have been extensively reviewed in the literature [21, 22].

Close to atmospheric conditions, pressure effects are often the main reason of the line broadening [23]. Neutral atoms and molecules are mainly responsible for the so-called Van der Waals broadening (collisional broadening). Another line broadening affecting specific atomic transitions naturally governed by the pressure is named resonance broadening. Such line broadening is being investigated and used in the present study to measure the neutral gas temperature.

At elevated pressure, the Doppler broadening is often neglected. Indeed, Doppler broadening that contributes to the gaussian FWHM is estimated using standard formula [24] for the two observed atomic lines: Ar at 750.39 nm ($2p_1 \rightarrow 1s_2$) and He at 667.82 nm ($3^1D \rightarrow 2^1P$). The highest gas temperature for Ar MHCD is supposed to be around 900 K. For the given temperature, Doppler broadening of the Ar line at 750.39 nm is about 2.6×10^{-3} nm. Similarly, the highest gas temperature in helium MHCD, which causes the highest Doppler broadening of helium lines, was estimated to be 500 K. Thus the maximal contribution of this broadening mechanism to the gaussian FWHM of He 667.82 nm line is 5.4×10^{-3} nm.

Self-absorption is another known mechanism of radiation energy transfer which may affect the line shape of atomic transition. However, the line profile of the resonant transitions used in this work are not affected by self-absorption broadening in the present experimental conditions [25, 17]. Crosschecking was performed by measuring the line strength ratio of the atomic oxygen triplet. The results show a deviation lower than 3% with the reference data of NIST [26] which support the assumption of no self-absorption in the discharge.

Stark broadening of non-hydrogenic lines is a consequence of quadratic Stark effect due to electron impacts with radiating atoms. This broadening mechanism contributes to the lorentzian part of the line profile and it is weakly sensitive to the plasma micro-field [24]. The effect is usually considered if the electron density exceed $5 \times 10^{15}/\text{cm}^3$, which should be well above the maximal electron densities in studied MHCD in argon and helium [27, 28]. However, the effect of the electron density on the line profiles is estimated for both observed lines using STARK-B database [29]. The estimations were calculated for the maximal electron densities of $1 \times 10^{16}/\text{cm}^3$ and electron temperature of 10^4 K for the Ar MHCD and $1 \times 10^{15}/\text{cm}^3$ and 10^4 K for the He MHCD. For the given plasma parameters, Stark FWHM of Ar line at 750.39 nm is below 0.01 nm and He 667.82 nm line below 0.007 nm [30].

An estimation was possible for He MHCD electron density of $1 \times 10^{14}/\text{cm}^3$ and electron temperature of 10^4 K leading to a Stark FWHM of 7×10^{-4} nm. With

the estimated values of Doppler and Stark contributions to the experimental line profiles, one concludes that these two broadening mechanisms have minor effects on the observed lines FWHM. Consequently, they can be safely neglected in further line profile analysis.

3.1.1. Resonance broadening This specific kind of broadening occurs for a radiative transition of an excited atom originating from or towards an energy level allowing for a dipole transition to the ground state of the emitters while the latter collides with identical atoms in the ground state [24]. It is a selective collisional broadening in a sense that only some peculiar lines of an atomic gas are affected. An example is shown in figure 4 where two lines of the $3p^5 4p \rightarrow 3p^5 4s$ Ar transitions are differently broadened. Indeed, the s_2 level of Ar belongs to a strong resonant state while the s_4

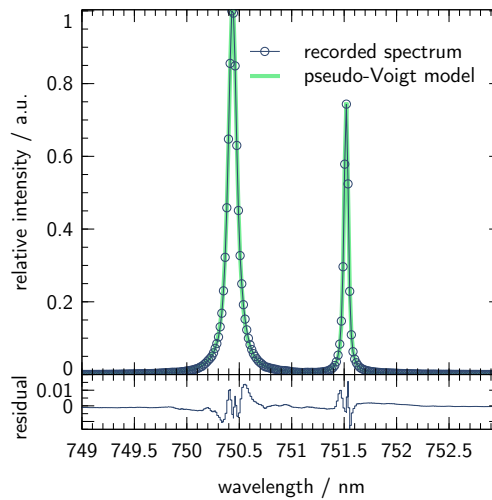


Figure 4. Ar spectrum of a resonance transition at 750.39 nm ($2p_1 \rightarrow 1s_2$) and a non-resonance transition at 751.46 nm ($2p_5 \rightarrow 1s_4$). The discharge current was set to $171 \pm 5 \mu\text{A}$ at a pressure of 666 mbar. T_g was estimated to be 669 ± 25 K.

level is by orders less resonant and might be broadened by other mechanisms and the instrumental function otherwise.

The resonance transition mechanism has been widely studied and its theoretical concept is well documented [31, 25]. A convenient way to describe the resonance broadening is through its contribution to the Lorentzian FWHM of the atomic line, w_R . It may be expressed as

$$w_R = K(0, 1) \frac{r_e}{\pi} \sqrt{\frac{g_G}{g_R}} \lambda_0^2 \lambda_R f_R N_R, \quad (1)$$

where r_e is the classical electron radius, g_G and g_R are the statistical weights of the ground and the resonant state respectively. f_R is the oscillator strength of the resonance transition of wavelength λ_R . Depending on the atomic gas, the corresponding values for the latter coefficients can be found in the NIST database [26]. λ_0 is the central wavelength of one of the lines affected by the resonance and being investigated. Conveniently, w_R is directly proportional to the ground state density number N_R of the emitters resulting in a significant resonance broadening in conditions

close to atmospheric pressure.

The coefficient $K(0,1)$ of (1) is related to the total angular momenta of the ground and resonant state. In the case of noble gases, several works have determined its value to be approximately 1, although a lack of matching data from the literature has been recently addressed in [32]. Over the past decade, 0.96 was commonly used as a value for $K(0,1)$ [24]. Recently, Pipa *et al* have published a comprehensive discussion on this topic based on many experimental and theoretical works [32]. The authors offered to reevaluate this coefficient based on extended literature review and suggest $K(0,1) = 1.04$ as the most probable value. The latter will be used in the present study.

3.1.2. Van der Waals broadening Apart from the selective resonance broadening, Van der Waals broadening and shift are universally affecting all atomic transitions. The latter results from the dipolar interaction between excited atoms and the induced dipole from all kind of neutral colliders. The theory of the Van der Waals broadening mechanism is complex but has been extensively studied: a detailed description can be found in [31, 33]. A practical and well-known expression [34, 35] giving its contribution to the Lorentzian FWHM of and atomic line w_{vdw} reads,

$$w_{\text{vdw}} [\text{cm}] = 8.18 \cdot 10^{-12} \lambda_0^2 (\bar{\alpha} \bar{R}^2)^{2/5} \left(\frac{T_g}{\mu} \right)^{3/10} \cdot N, \quad (2)$$

where λ_0 is the wavelength of the observed atomic transition, $\bar{\alpha}$ is the average polarizability of the neutral collider [36], μ is the reduced mass of the emitter-collider system and \bar{R} is the difference between the values of the coordinate vector of radiating electron in the excited state [33]. As a matter of fact, w_{vdw} is proportional to the total number density N and also depends on the neutral gas temperature T_g . To complete the broadening description (2), the theory predicts that a shift of the line to the red is also affecting the transition. It is approximately estimated to one-third of w_{vdw} but it is negligible under our experimental conditions simply due to the instrumental function.

Quantitatively –in plasmas close to atmospheric pressure– the observed broadening of atomic lines is –with the exception of the resonance transitions– a competition between the contribution of w_{vdw} and the instrumental function if not dominated by the latter otherwise [24].

3.2. Measure of the neutral gas temperature – T_g

Considering the above broadening descriptions and their close dependence with neutral number density of weakly ionized gas ($N_R \approx N$), it is possible to determine T_g . Depending on the discharge gas, the line profile of the resonance transition of Ar at 750.39 nm ($2p_1 \rightarrow 1s_2$) or He at 667.82 nm ($3^1D \rightarrow 2^1P$) are observed and analyzed. Both lines are chosen for their strong emission intensity, their separation from other neighboring emissions and their spectral position in the visible range.

To obtain a value of the Lorentzian FWHM of each broadening depending on T_g , (1) and (2) are expressed in a more convenient form as,

$$w_R [\text{nm}] = \kappa_R \cdot \frac{p [\text{Pa}]}{T_g [\text{K}]}, \quad (3)$$

$$w_{\text{vdw}} [\text{nm}] = \kappa_{\text{vdw}} \cdot \frac{p [\text{Pa}]}{T_g^{0.7} [\text{K}]}. \quad (4)$$

The coefficients κ_R and κ_{vdw} are transition specific. The calculated values are given in table 1 taking into account the recent correction of $K(0, 1)$ suggested in [32] for the resonance broadening. Consequently, the FWHM of the Lorentzian contribution (w_L)

Table 1. Coefficients used in (3) and (4) for the determination of the Lorentzian FWHM of the resonance and the Van der Waals broadening.

	λ_0 [nm]	κ_R [10^{-5} nm K/Pa]	κ_{vdw} [10^{-5} nmK ^{0.7} /Pa]
Ar	750.3869	57.56	2.28
He	667.8151	28.08	1.77

to the measured line shape can be expressed as,

$$w_L \approx w_R + w_{vdw}, \quad (5)$$

being inversely proportional to T_g .

Experimentally, the profile of a line is known to be a convolution of the instrumental function (Gaussian type) with –in our case– the sum of each pressure broadening having a Lorentzian profile. To analyze the line shape of the recorded spectra and to infer T_g from w_L , the line is fitted to a pseudo-Voigt distribution function, $f(\lambda; A, \lambda_0, \sigma, \eta)$. Figure 5 shows a typical spectrum of the resonance transition of He at 667.82 nm fitted with a pseudo-Voigt function, which is an analytical approximation of the Voigt function. The pseudo-Voigt profile (6) is a linear combination of a Gaussian

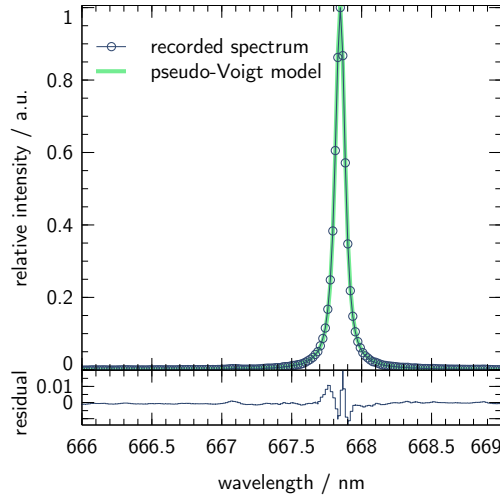


Figure 5. Typical line shape of the resonant transition of He at 667.82 nm ($3^1D \rightarrow 2^1P$). The discharge current was set to $71 \pm 2 \mu A$ at a pressure of 666 mbar. T_g was estimated to be 374 ± 14 K.

profile and a Lorentzian profile balanced with the parameter η ranging from 0 to 1. Both parts are normalized to share the same amplitude A , the same central value λ_0 and a constrained width with the parameter σ giving the following expression,

$$f(\lambda; A, \lambda_0, \sigma, \eta) = A \frac{(1 - \eta)}{\sigma_g \sqrt{2\pi}} \exp \left[-\frac{(\lambda - \lambda_0)^2}{2\sigma_g^2} \right] + \frac{A\eta}{\pi} \left[\frac{\sigma}{(\lambda - \lambda_0)^2 + \sigma^2} \right], \quad (6)$$

where $\sigma_g = \sigma/\sqrt{2\ln 2}$ so that the FWHM of each component and of the sum is 2σ . The advantage of using a pseudo-Voigt function –instead of a Voigt function– is the limited number of fitting parameters, its explicit computation and the pragmatical nature of the approximation allowing for a clear identification of each underlying contribution to the line shape structure [37].

Finally, the Lorentzian part w_L of the line shape is deduced with a simple series expansion as,

$$\eta = 1.36603(w_L/2\sigma) - 0.47719(w_L/2\sigma)^2 + 0.11116(w_L/2\sigma)^3, \quad (7)$$

with a maximum inaccuracy of 1 % depending on the value of η [38].

3.3. Rotational temperature of $N_2(C-B) - T_{rot}$

Another approach to determine the neutral gas temperature of non-thermal plasmas is to study the rotational distribution of –diatomic– molecules. This is carried out by recording the emission spectra of a ro-vibrational molecular band and after analysis of the relative intensity of each rotational state. The method is commonly used in plasmas operated at elevated pressure simply because of the high collision frequency which will support the thermalisation of the rotational population distributions. The assumptions to consider the translational temperature equal to the rotational temperature (T_{rot}) are detailed in [39].

Potentially, all excited molecular states can be used to have an idea about the neutral gas temperature although some molecular spectra may have some of their ro-vibrational structure disturbed due to competitive excitation, deexcitation and quenching processes as reported in [39, 40]. In this work, T_{rot} of $N_2(C-B)$ –or second positive system– will be studied. Conveniently, traces of N_2 often remain as impurities within the gas chamber and yields an intense emission easy to record in the near-UV. An example of a rotational spectrum of $N_2(C-B)$ –with $v' = 1$ the upper vibrational state and $v'' = 3$ the lower level– is shown in figure 6. To analyze the recorded spectra, a numerical curve optimization algorithm is used to fit a simulated rotational distribution intensity spectrum. For a given vibrational transition ($v' \rightarrow v''$) of $N_2(C-B)$, each relative rotational transition intensity $I_{J''}^{J'}$ is proportional to,

$$I_{J''}^{J'} \propto N_{v'} S_{J''}^{J'} \left(\nu_{v'',J''}^{v',J'} \right)^4 \exp \left[-\frac{hc}{k_B T_{rot}} F_{v'}^{(1,2,3)}(J') \right], \quad (8)$$

with J' and J'' the upper and lower rotational excited states respectively. $N_{v'}$ is the number density of $N_2(C-B)$ in the excited state v' and $S_{J''}^{J'}$ is the line strength –or Hönl-London factor as triplets of $N_2(C-B)$ belong to the intermediate case between Hund case (a) and (b) [41]– theoretically described by Kovacs for all type of transitions and couplings [42]. $\nu_{v'',J''}^{v',J'}$ is the transition frequency and $F_{v'}^{(1,2,3)}(J')$ is the rotational spectral term [41] depending on the vibrational quantum number v' . The latter quantities are calculated according to the set of spectroscopic constants published by Roux *et al* [43].

The spectrometer is set to record in a single frame three rotational emission bands of $N_2(C-B)$: (0-2), (1,3) and (2-4) with the band heads observed at 380.5 nm, 375.5 nm and 371.0 nm respectively [44]. To take into account the spectral response of the system, a calibrated deuterium lamp is used to correctly set the relative intensity of the spectra.

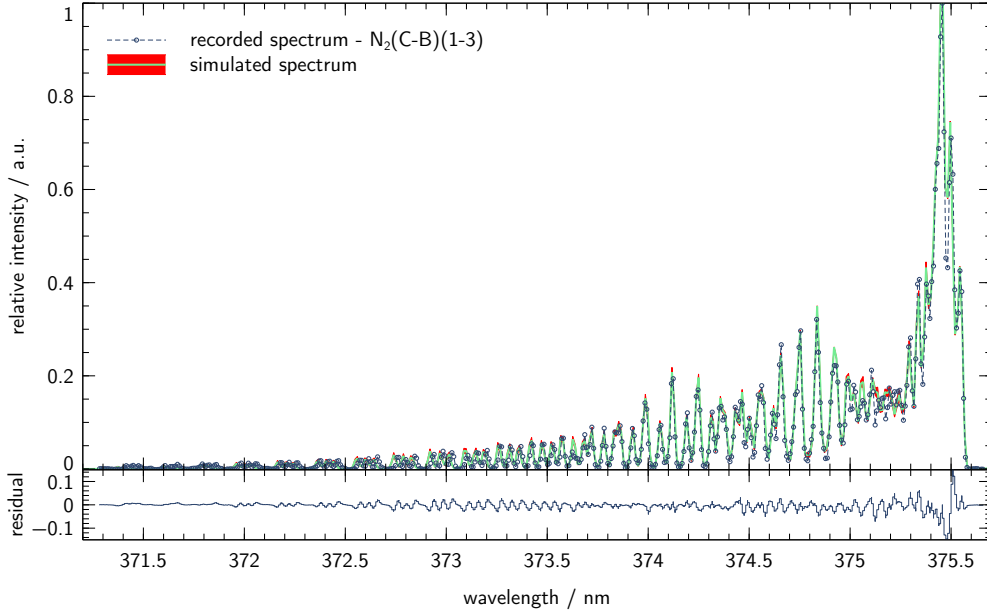


Figure 6. Experimental and simulated rovibrational emission distribution of $N_2(C-B)(1-3)$. $T_{\text{rot}} = 447 \pm 15 \text{ K}$ is determined from the fitting curve optimization with 95% confidence interval. The latter surrounds the simulated spectrum line in red. Discharge in pure N_2 at 266 mbar with $I_{\text{MHCD}} = 101 \pm 3 \mu\text{A}$.

3.4. Error analysis and uncertainties

In experimental work, error analysis of measured values is a key to determine the reproducibility of the observations, the validity and the limits of each diagnostic method [45]. While dealing with emission spectroscopy techniques –essentially based on complex formalisms involving tangled constants– it is somewhat necessary to estimate uncertainties of the outcome.

Regarding the determination of T_{rot} , the fitting routine was developed accounting for –only– four adjustable parameters namely T_{rot} , the FWHM of the instrumental function, a coefficient to shift the wavelength scale and an optional parameter to correct for the non-linearity of the spectral dispersion. This reduced parameter set offers the advantage of a robust fit narrowing significantly the range of values for T_{rot} . To enhance the reliability of the outcome, the optimization procedure is twofold. First, a differential evolution algorithm is used to determine the parameter ranges related to the global minimum. In a second step, a gradient method based on the Levenberg-Marquardt algorithm allows of optimizing the value of each parameters. To quantify T_{rot} uncertainties, a confidence interval is systematically computed with 95% probability leading to typical relative errors of 3% to 6%.

Concerning the measurement of T_g described in section 3.2, the approach is the following. δT_g is defined as uncertainty in T_g . From (5) one can consider $\delta \tilde{w}$ as the global uncertainties in the Lorentzian FWHM of the experimental atomic line shape such as,

$$\delta \tilde{w} = \delta w_L + \delta w_R + \delta w_{\text{vdw}}, \quad (9)$$

with δw_L being twice the standard deviation of w_L , found after optimization of the pseudo-Voigt profile with the experimental spectra. The uncertainties δw_R and δw_{vdw} are related to w_R and w_{vdw} respectively. According to (5), these coefficients read,

$$\delta w_R^2 = (pT_g^{-1})^2 \cdot \delta \kappa_R^2 + (\kappa_R T_g)^2 \cdot \delta p^2, \quad (10)$$

$$\delta w_{\text{vdw}}^2 = (pT_g^{-0.7})^2 \cdot \delta \kappa_{\text{vdw}}^2 + (\kappa_{\text{vdw}} T_g^{-0.7})^2 \cdot \delta p^2, \quad (11)$$

with the fractional uncertainties estimated from the literature and reported in table 2. In case of N_2 admixture up to 1%, the coefficient κ_{vdw} should be recalculated

Table 2. Typical fractional uncertainties estimations for the coefficients used to calculate $\delta \tilde{w}$. The values are based on literature review or from the experiments of this work.

coefficient	fractional uncertainties	ref.
$\delta \kappa_R$	4 %	[24, 32]
$\delta \kappa_{\text{vdw}}$	10 %	[24, 33, 46, 36]
δp	2 %	instrument
δw_L	<1 %	fit model
δT_g	<4 %	this work

accordingly due to the additional nature of the potential colliders. However, the low N_2 fraction leads to a relative variation of κ_{vdw} below its fractional uncertainties $\delta \kappa_{\text{vdw}}$. The fractional uncertainties $\delta \kappa_{\text{vdw}}$ Consequently, an upper and a lower bounds of T_g can be inferred from (5) taking into account $\delta \tilde{w}$ such as,

$$w_L \pm \delta \tilde{w} \rightarrow \begin{cases} T_g^{\min}, \\ T_g^{\max}, \end{cases} \quad (12)$$

which lead to determine trustful values of δT_g as a realistic and meaningful uncertainties in T_g . A maximum value of δT_g is reported in table 2 based of the experimental data obtained in this work.

4. Results and discussion

4.1. Electrical measurements

Typical electrical characteristics of the MHCD operating in He (666 mbar) and supplied by a stabilized DC generator are presented on figure 7. The voltage and current curves are shown in figure 7a). During the first 4 s the voltage increases up to 200 V where the breakdown occurs leading to the ignition of the discharge. The related nested plot shows the breakdown time with the classical voltage drop and a simultaneous current rise. From this moment up to 10 s, the voltage source is adjusted to set a desired value of I_{MHCD} , e.g. $394 \pm 5 \mu\text{A}$ corresponding to a power as high as $72 \pm 2 \text{ mW}$ in the case reported on figure 7a). The optical measurements are realized when the stable regime is reached. Figure 7b) presents the I - V characteristic curve known for classical glow discharges with the difference that the voltage is never strictly independent of the current value. First note that current and voltage of the discharge are particularly stable as compared to the previous configurations studied in [47]. To avoid any confusion with the definition of the normal regime, this regime is called *quasi-normal* [19]. The latter reference reported on an hysteresis which is also

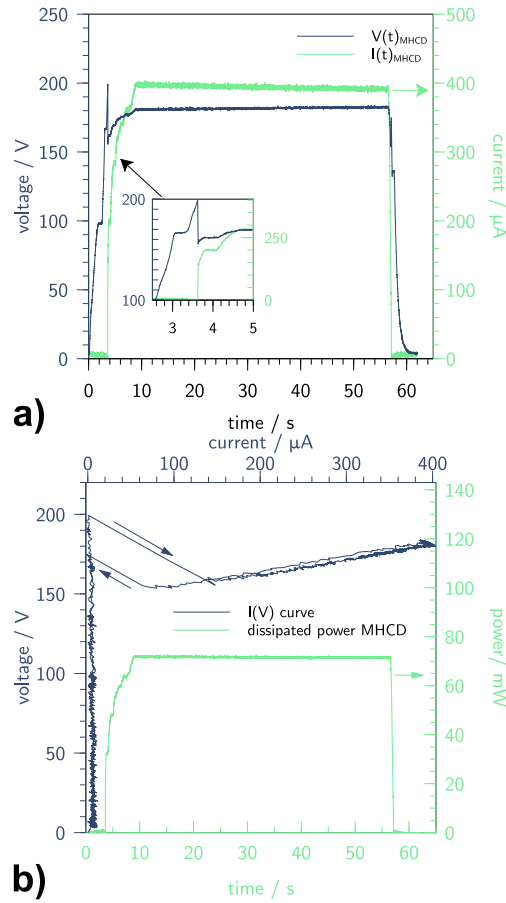


Figure 7. Electrical characteristics of a single MHCD reactor operated in He at 666 mbar. a) shows the time evolution of V_{MHCD} and I_{MHCD} . b) is the classical I - V characteristic together with the instantaneous power.

observed but not clearly identified. It is important to note that the current, voltage and dissipated power are remarkably stable over the time and during the measurement even at power densities as high as $2.9 \times 10^5 \text{ W/cm}^3$. The region of negative slope reported in [48] on the I - V characteristic is not observed in the present case due to the rather thin dielectric layer allowing for a contiguous expansion of the plasma onto the anode surface.

4.2. T_g in Ar and He discharges

The neutral gas temperature is firstly measured in pure noble gases. Figure 8 presents T_g dependence of I_{MHCD} for He and Ar showing significant differences. For both gases, T_g is calculated from the resonance broadening without the Van der Waals contribution. The data evaluation is twofold: once involving the commonly used value of $K(0, 1)$ and a second time with the recent reevaluation suggested by Pipa *et al* [32] (cf. discussion in section 3.1.1). Depending on the value used for $K(0, 1)$, the impact on T_g in He discharge does not exceed 30 K. However, T_g seems to be

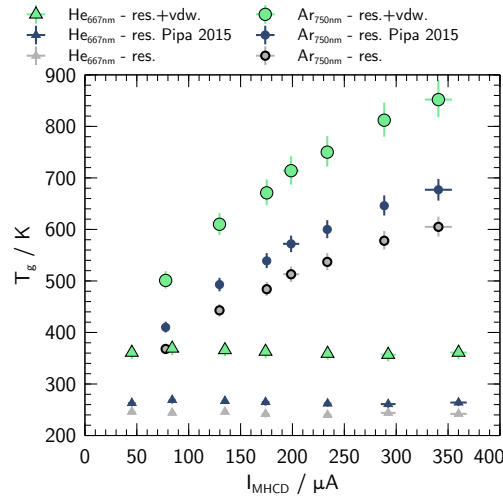


Figure 8. T_g inside the cavity of the MHCD operating in Ar and He gases taking into account the resonant broadening and the Van der Waals contribution. The pressure was set to 666 mbar. Data labeled *Pipa 2015* refers to the discussion in section 3.1.1 and the references therein.

underestimated with values around 270 K which is below the room temperature. This fact reveals that the analysis of the line considering solely the resonant broadening is not satisfying. The same evaluation is shown in the case of Ar where the values found for T_g are more realistic although the choice of the resonance constant can yield deviations up to 100 K.

To illustrate substantially the necessity to take into account –in the present case– the Van der Waals broadening as a *correction* to the resonance broadening contributing to w_L , both data sets are analyzed according to equation (5). A significant correction on T_g ranging from 100 K to 180 K is observed for both gases. As a matter of fact, this evidences that in room temperature plasmas, the determination of T_g by emission spectroscopy requires an adequate description of the broadening mechanisms to infer reasonable values of T_g . As a matter of fact, T_g in He is now found to be in a realistic range, above room temperature. Remarkably, the temperature of the discharge in He stays constant around 360 K which means that T_g inside the cavity is independent of I_{MHCD} considering the investigated current range.

However in case of Ar, T_g increases significantly with the current to reach values up to 850 K without damaging the micro-reactor. These results are in very good agreement with the temperatures reported in [15, 13] for DC MHCD in Ar with different geometries. While in the present case the power density is estimated to be about one order of magnitude higher than in the referred studies, a similar dynamic of T_g depending on I_{MHCD} is observed.

The main reason to explain the temperature behavior between the two gases is the thermal conductivity of He which is about 8.5 times larger than for Ar in the temperature range from 300 K to 600 K [49]. As a consequence, it is expected that in the case of He, the heat flux is efficiently transferred into the wall of the micro-reactor and by convection with the cooler gas in the vicinity of the outlet. This means that T_g is mostly determined by the type of the gas rather than the geometry of the

micro-reactor.

4.3. T_g in Ar with N_2 admixture

The gas temperature is evaluated from the line broadening of resonant lines in case of small amount of molecular gases added to the discharge. It is known that in Ar/ N_2 discharge, an efficient quasi-resonant energy transfer between two metastable states Ar(3P_2) and Ar(3P_0) with N_2 occurs [50]. This excitation mechanism competes with a direct electron impact excitation leading to an overpopulation of high J of the vibrational bands. Thus their relative intensity distributions are not described by equation 8 and T_{rot} of N_2 cannot be measured because the rotational population distributions are not in equilibrium. Therefore, it is interesting to investigate the influence of small admixture of N_2 in a DC MHCD in Ar on the neutral gas temperature using the resonant line profile analysis.

A fraction of N_2 is mixed with Ar considering the quasi-resonant energy coupling between some Ar metastable states with this diatomic molecule. The results are shown in figure 9. The effect of N_2 fraction is not that significant on T_g in Ar mixture.

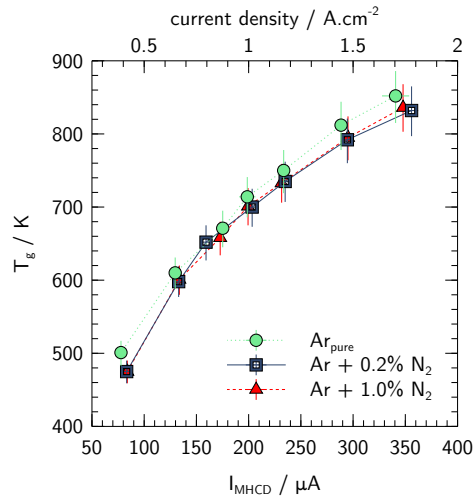


Figure 9. T_g in the cavity of the MHCD operating in Ar with small admixture of N_2 . The pressure was set to 666 mbar.

The trend of the curve is the same as in pure Ar. At constant current, a slight decrease of T_g due to N_2 is attributed to a redistribution of energy to excite the ro-vibrational states. Unexpectedly the rotational to translational energy transfer does not increase T_g . As a matter of fact, admixtures of 0.2% to 1.0% of N_2 in Ar have the same effect on T_g . Although for the three curves and at constant current, values of T_g are within the uncertainty range, a minor tendency to cool down the gas temperature can be mentioned.

4.4. T_{rot} in pure N_2

The case of DC MHCD operated in N_2 gas is investigated focusing on the neutral gas temperature. Since no any Ar neither He atoms are present in the discharge,

the method to evaluate T_g from the line shape is substituted by studying the rotational temperature of $N_2(C-B)$. Figure 10 presents the results of T_{rot} for several ro-

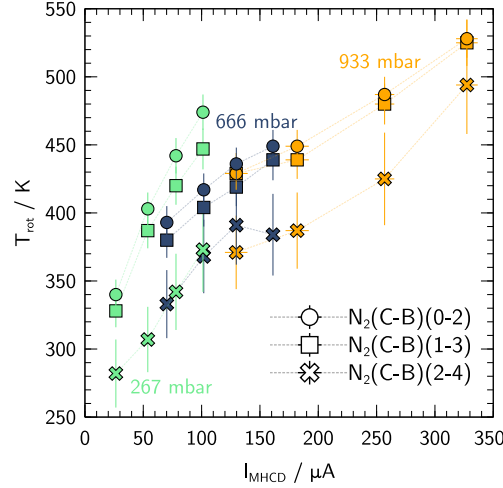
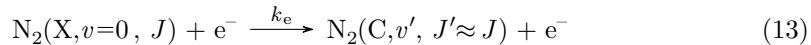


Figure 10. Rotational temperatures of MHCD in pure N_2 discharge for three different pressure conditions (colored symbols: 267 mbar in green, 666 mbar in blue and 933 mbar in orange.) considering three vibrational bands of $N_2(C-B)$ recorded simultaneously.

vibrational bands and three different pressure conditions, namely 267 mbar, 666 mbar and 933 mbar. At the first glance –and with the assumption that T_{rot} is in equilibrium with the translational energy– the range of neutral gas temperature in N_2 DC MHCD seems to be lower than in Ar as shown in figure 9. One notes that the thermal conductivity of N_2 is about 1.5 times larger than Ar. Interestingly for each pressure condition, T_{rot} of the three ro-vibrational bands have reasonably the same slope. However, the discrepancies between T_{rot} values of $N_2(C-B)(0-2)$ or $N_2(C-B)(1-3)$ with $N_2(C-B)(2-4)$ evidences some issues with the thermalization of higher ro-vibrational states. The radiative lifetime (τ_C) of $N_2(C)$ is 36.6 ns [51]. In pure nitrogen plasma, the quenching of $N_2(C)$ is dominated by N_2 in the ground state. Considering the quenching rate $k_{N_2}^C = 1.1 \times 10^{-11} \text{ cm}^3/\text{s}$ [51], the lifetime of $N_2(C)$ is significantly reduced to 4 ns for a plasma at 933 mbar and 300 K. In these conditions, the rotational-to-translational energy transfer (R-T) between the gas in the ground state with $N_2(C)$ occurs in the same timescale as the spontaneous emission. Values from the literature and suggested in the review article [39] are used to estimate τ_{R-T} –the time between R-T collisions– leading to $2 \text{ ns} \leq \tau_{R-T} \approx \tau_C \leq 11 \text{ ns}$. The competition between both processes may disturb the equilibrium of the rotational population distribution of each vibrational level. However, the relatively high electron number density in MHCDs and the large majority of ground state $N_2(X)$ implies that the direct electron impact excitation,



is the dominant mechanism to populate the C-state. Typical values of the electron excitation rate (k_e) are documented in [39]. Consequently, the fast excitation from $N_2(X)$ state –being in R-T equilibrium– prevents significant changes of the rotational angular momentum allowing for a transfer of the rotational population

distribution from the ground state to the $N_2(C)$ state. A thorough analysis of $N_2(C-B)$ ro-vibrational spectra to interpret T_{rot} has been published in [10]. The authors developed an extended argumentation considering more general cases [40] leading to the conclusion that in the conditions of this study, T_{rot} of $N_2(C-B)(0-2)$ reasonably equals T_g . Regarding T_{rot} found for the $N_2(C-B)(2-4)$ band, the discrepancies may be due to vibrational quenching within the C-state which will be discussed later on.

In the present case, T_{rot} values of $N_2(C-B)(0-2)$ and $N_2(C-B)(1-3)$ are significantly close for each pressure condition. At constant value of I_{MHCD} , the rise of T_{rot} with the pressure is consistent with the expectation on the gas temperature. Based on the latter facts, T_{rot} of both ro-vibrational bands estimates in a credible range the neutral gas temperature of the discharge in pure N_2 . As a matter of fact, the gas temperatures are much lower than in Ar and are in agreement with values published in [12]. In the latter article, the same three ro-vibrational bands are recorded while T_{rot} is measured for $N_2(C-B)(0-2)$ only. The authors reported on difficulties to fit some sets of spectra with other bands which can be a consequence of the non-equilibrium rotational population distributions, particularly for $N_2(C-B)(2-4)$ as also observed in the present work.

4.5. T_g within and out of the cavity

The idea to measure T_g in He and Ar gas at the surface of the cavity is realized by rotating the MHCD by $\theta = 90^\circ$ (cf. figure 2). This approach is considered in order to complete prior spectroscopic measurements performed front-on while the whole light emitted by the plasma volume is collected. Although the diagnosed position on a 2D plane parallel to the reactor surface is well defined (cf. figure 3), the information along the cavity axis (*i.e.* the cavity depth) is not clear. By imaging the small He plasma volume expanding onto the anode surface, one can infer values of T_g and have a better insight on the thermal gradient. An illustration of the observation directions is shown

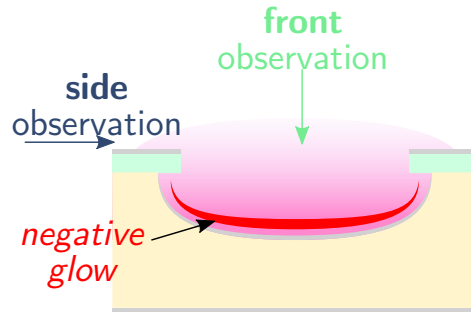


Figure 11. Sketch of the light intensity distribution and light collection from a single MHCD cavity with respect to the front and the side observation directions.

in figure 11.

T_g obtained from spectroscopic observations performed on the side of the He and Ar MHCD are presented in figure 12. It is important to note that the emission intensity collected front-on is much more intense than from the side. As T_g is related to the spectral line shape –and not to the magnitude of the signal– the recorded line profile results from the contribution of all emitters along the imaged plasma volume.

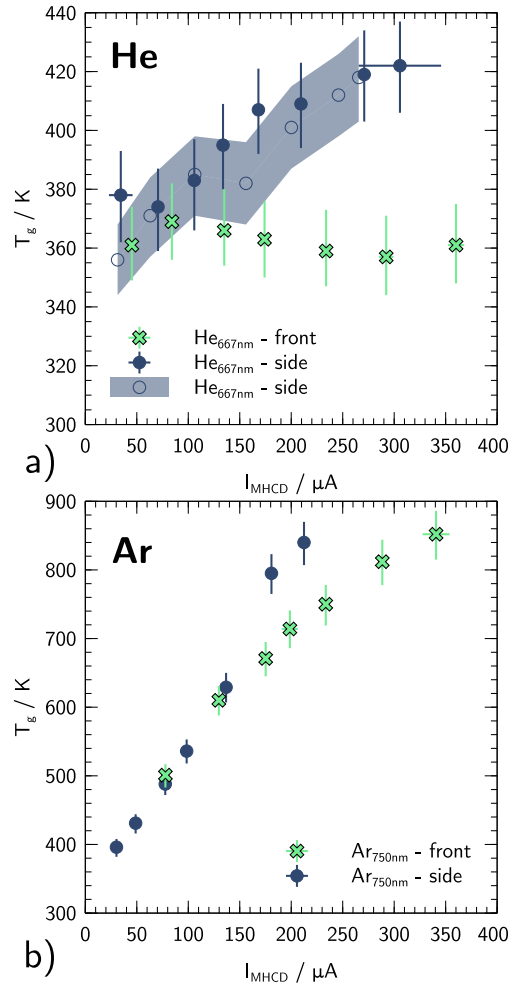


Figure 12. Comparison of T_g within (front) the MHCD cavity and outside (side) for a) He where two data set are plotted with the uncertainty intervals and b) Ar gases. The pressure was set to 666 mbar.

Consequently, it can be safely assumed that T_g from front observation corresponds to the plasma volume where the emitter number density is the highest and being located within the micro-cavity. In DC glow discharges, this plasma volume corresponds to the *negative glow* from which yields the strongest light intensity. T_g obtained from side observation is obviously related to the –small– plasma volume outside the cavity. Figure 12a) presents a comparison of T_g inside and outside the micro-cavity in pure He. Due to the delicate alignment to collect the light on the MHCD side, a second data set with a shaded area is added to the graph in order to highlight the repeatability of the results as well as to show the uncertainty range. A clear difference between both curves evidences a thermal gradient in the MHCD. T_g outside the cavity rises continuously while the temperature inside remains constant. For I_{MHCD} up to 130 μA it can be observed that T_g inside and outside are similar whereas T_g continues to rise with an increase of I_{MHCD} to reach a temperature difference of about 50 K. This fact

is also observed in the case of the Ar discharge as shown in figure 12b). While T_g is much higher in the Ar than in the He discharge, it is interesting to mention that a temperature difference between inside and outside the micro-cavity is observed starting from 150 μA for both gases. This may be due to a transition from the *quasi-normal* regime towards the *abnormal* regime. It is expected to be strongly dependent on the geometry and the pressure. Prior observations with close-up high-speed imaging revealed that the cathode cavity seems to be filled by the plasma volume which quickly leads to an increase of the current density.

The hotter temperature outside the cavity is attributed to two reasons related to the thermal conductivity of the gas and the materials. Indeed, at 350 K Si has a thermal conductivity of 119 W/(mK) while SiO_2 formed by thermal oxidation is at 1.6 W/(mK) [52]. Consequently, the SiO_2 layer acts as an efficient thermal insulation whereas Si has the role of a heat sink for the gas located within the cavity. This is particularly demonstrated in the case of He where T_g inside the cavity remains constant due to the efficient heat transfer into the wall by conduction mechanism enhanced by a high thermal conductivity of the He gas. Inversely, outside of the cavity –where no efficient conduction occurs– the convection dominates the heat transfer with a much lower efficiency. The cooling effect of the discharge gas within the cavity is particularly effective in He while in Ar the effect is not as significant, probably because of the much higher T_g of the discharge which subsequently leads to a fast decrease of the thermal conductivity of Si [52].

4.6. T_{rot} within and out of the cavity in He

To consolidate the results presented in the previous section, T_{rot} is measured inside and outside the micro-cavity in the case of a discharge in He. The approach is the same as previously described, with T_{rot} evaluated for $\text{N}_2(\text{C-B})(0-2)$ and $\text{N}_2(\text{C-B})(1-3)$ bands. The results are presented in figure 13. In the first place one focuses on T_{rot}

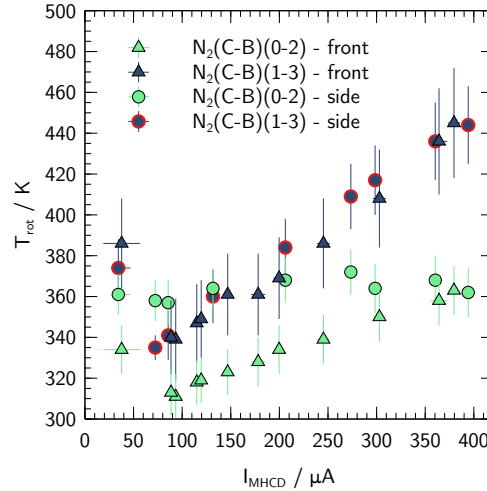
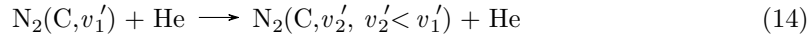


Figure 13. Comparison of T_{rot} for two vibrational bands of $\text{N}_2(\text{C-B})$ within (front) the MHCD cavity and outside (side) in He cases. The pressure was set to 666 mbar.

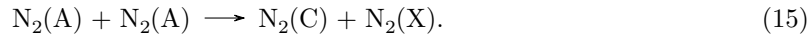
obtained for front observation. While absolute T_{rot} values differ for each band, both

curves described the same features. With the rise of the current, T_{rot} increase linearly for both curves with a similar slope. It is expected that an extrapolation towards $I_{\text{MHCD}} = 0 \mu\text{A}$ results in a slope-intercept which is close to the ambient temperature. Although for I_{MHCD} below $250 \mu\text{A}$, T_{rot} values might be considered in the same range, the discrepancies are enhanced with the rise of the current with approximately 100 K difference. A specific feature is observed for I_{MHCD} inferior to $50 \mu\text{A}$ which corresponds to the limit of the *self-pulsing* mode. The latter corresponds to a transient regime which will be tackled in the next section. Interestingly, T_{rot} is higher than in *quasi-normal* regime leading to a “V”-shape of the T_{rot} curves.

Observations performed on the side direction result in T_{rot} values in the same range, although T_{rot} of each band is not described by the same trends. While T_{rot} of $\text{N}_2(\text{C-B})(0-2)$ does not reveal any dependence of I_{MHCD} , T_{rot} of $\text{N}_2(\text{C-B})(1-3)$ unexpectedly resembles the curve obtained from the front observation. Obviously, in these conditions T_{rot} is not in equilibrium. In helium mixture $\tau_{\text{C}} \approx 36.6 \text{ ns}$ and $\tau_{\text{R-T}}$ is estimated to be in the range of 1 ns to 10 ns [39, 51], which is –in this case– significantly faster than in pure N_2 discharge. To understand the difference between T_{rot} of each ro-vibrational band, vibrational quenching by He was investigated for $v = 0$ and $v = 1$ of the C-state. According to [53], while $\tau_{\text{C}}^{v=0} \approx 36.4 \text{ ns}$, $\tau_{\text{C}}^{v=1,2}$ could be reduced to 27 ns due to the quenching with He atoms. However this is reasonably longer than $\tau_{\text{R-T}}$. Two potential reasons have already been discussed to explain these discrepancies. In [10] the authors mentioned the vibrational quenching *within* the C-state such as,



as a possible cause of non-equilibrium rotational distribution all the more to justify the analysis of T_{rot} of $\text{N}_2(\text{C-B})(0-2)$ as a good estimation of T_{g} since no internal vibrational quenching is of concern. In all likelihood, it has already been addressed in several papers [39, 40, 10] that many rate coefficients of the depopulation of the C-state are missing from the literature. The second reason might come from the population of $\text{N}_2(\text{C})$ from the $\text{N}_2(\text{A})$ metastable state due to pooling reactions and direct electron excitation [54, 10].



In this case, the relatively low number density of $\text{N}_2(\text{A})$ is to be considered with regard to its long lifetime, especially in He discharge where the major quenching partner is $\text{N}_2(\text{A})$ itself. It cannot be excluded that in DC MHCD, the $\text{N}_2(\text{A})$ concentration could be significant compared to discharge containing molecular oxygen or Ar [55].

Apart from the discussion on T_{rot} deviations, temperature values are distributed in a well defined interval ranging from 310 K to 460 K. The latter is in excellent agreement with previous measurements of T_{g} obtained by atomic line profile analysis. It is highlighted that both T_{rot} and T_{g} show the same tendency regarding the thermal gradient of the discharge, i.e. the temperature is higher in the vicinity of the cavity opening than within the cavity. The latter fact supports the argumentation developed in the previous sections.

4.7. Comparison between T_{g} and T_{rot} in self-pulsing regime

MHCDs have the ability to operate in continuous DC excitation and to switch – under some particular conditions – in a fully transient mode so-called *self-pulsing* [56]. In this study, the self-pulsing regime has the advantage of varying permanently the electric excitation –as opposed to the continuous DC excitation– without adding an

electric insulation layer to the actual design and using a AC power supply [57]. This oscillating regime is described theoretically and experimentally as an alternate of transient expansions of the plasma onto the cathode surface for typically microseconds before to confines itself to sustain the discharge [56, 58]. The relaxation oscillation frequency ranges from a couple of kHz up to MHz [2] and are expected to depend strongly on the gas, the pressure and the reactor geometries. Typical self-pulsing V_{MHCD} and I_{MHCD} waveforms are shown in figure 14. In the present conditions, the

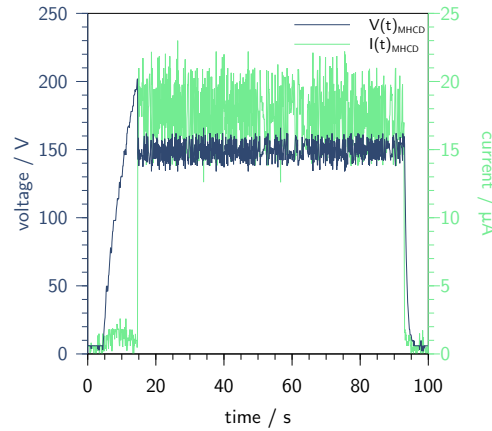


Figure 14. Typical voltage and current waveforms of a single MHCD reactor operated in self-pulsing regime in He at 666 mbar. The average current is $17 \pm 2 \mu\text{A}$ for an average dissipated power of $2.5 \pm 0.5 \text{ mW}$.

oscillation frequencies were estimated to range from 1 kHz to 3 kHz by means of fourier transform analysis. The electronic excitation and ionization mechanisms are expected to change due to these rapid fluctuations. This constitutes an opportunity to study T_{g} and T_{rot} in these conditions.

The averaged current is set to $17 \pm 2 \mu\text{A}$ to operate the MHCD far enough from the threshold current before to switch to the continuous *quasi-normal* regime. The observation are performed front-on to collect the light since the intensity is significantly lower. T_{g} and T_{rot} are measured as described in the above sections. The results are shown in figure 15. Two data sets corresponding to two MHCD micro-reactors from different batches are used in this comparison since the self-pulsing regime can be also described as sustainable instabilities which may depend on tiny irregularities from cavity to cavity. Qualitatively, for both sets, T_{g} values are remarkably consistent and evidence the robustness of the line profile analysis to infer the neutral gas temperature. Regarding T_{rot} , the stability of the discharge and the reproducibility of the measurements are demonstrated which is quite substantial in the conditions of perpetual transient self oscillations. Quantitatively, a clear discrepancy is noticed between T_{g} and T_{rot} while the latter is reasonably the same for the $\text{N}_2(\text{C-B})(0-2)$ and $\text{N}_2(\text{C-B})(1-3)$ bands. This is observed for the first time in this study and suggests that the mechanisms governing the rotational population distributions of $\text{N}_2(\text{C})$ yield a better uniformity with regard to the vibrational levels. It is hypothesized that this can result from a significant fluctuation of the $\text{N}_2(\text{A})$ metastable concentration in the self-pulsing regime which would reduce their probable contribution to populate $\text{N}_2(\text{C})$. Meanwhile, the difference between T_{g} and T_{rot} implies to some degree that the

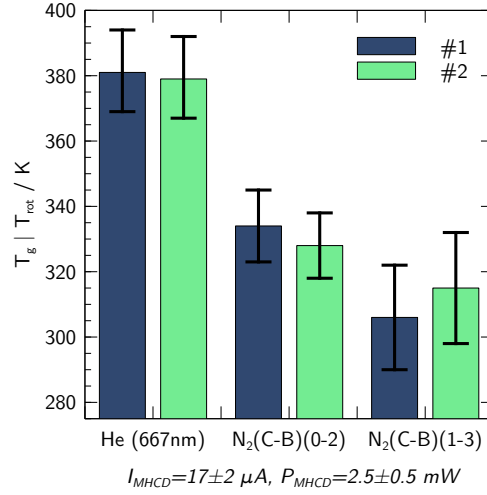


Figure 15. Comparison of T_g (after analysis of the He line profile at 667 nm) and T_{rot} of $N_2(C-B)$ for a single MHCD reactor operated in self-pulsing produced from two different batches labeled #1 and #2. The discharge operates in He at 666 mbar, $I_{MHCD} = 17 \pm 2 \mu A$ and $P_{MHCD} = 2.5 \pm 0.5 mW$. The uncertainties represents the 95 % confidence interval.

rotational distributions deviate from the equilibrium.

Unexpectedly, for rather low I_{MHCD} T_g is found higher than results shown in figure 8 corresponding to the quasi-normal regime with much higher current. However, higher temperatures were already observed with the exception of self-pulsing as discussed in section 4.6. An overestimation of T_g from the atomic line profile would mean that the Lorentzian contribution to the FWHM requires an additional broadening mechanism incorrectly attributed to the already considered effects. The extreme conditions of electric field imposed by the microscopic scale may suggest a potential broadening and shift of the line due to DC Stark effect. However in the present case, the latter is of no concern since the light was collected from the center of the cavity where the DC Stark effect is not present [59]. Thus it is argued that the analysis of the line profile provides the more realistic values of T_g .

4.8. Temperatures of MHCD in the anodic cavity

The case of MHCD with an anodic cavity is realized by switching the polarity of the surface electrode. The latter is supplied with a negative voltage whereas the bottom of the cavity remains grounded. This configuration leads to the generation of a discharge which expands onto the outer electrode acting as a cathode and yields a constant current density since the plasma is not limited by the cathode surface. A direct consequence is that typical values of I_{MHCD} are one order of magnitude higher compared to the prior configuration. Depending on the nature of the gas, the pressure and the geometry, the sheath at the cathode surface can shape the confinement of the plasma volume contained within the cavity [19].

To measure T_g and T_{rot} in the plasma volume located within the cavity, the light is collected front-on. In this experiment, the discharge was ignited in He at two different pressures (267 mbar and 666 mbar). The results are show in figure 16. Note that the

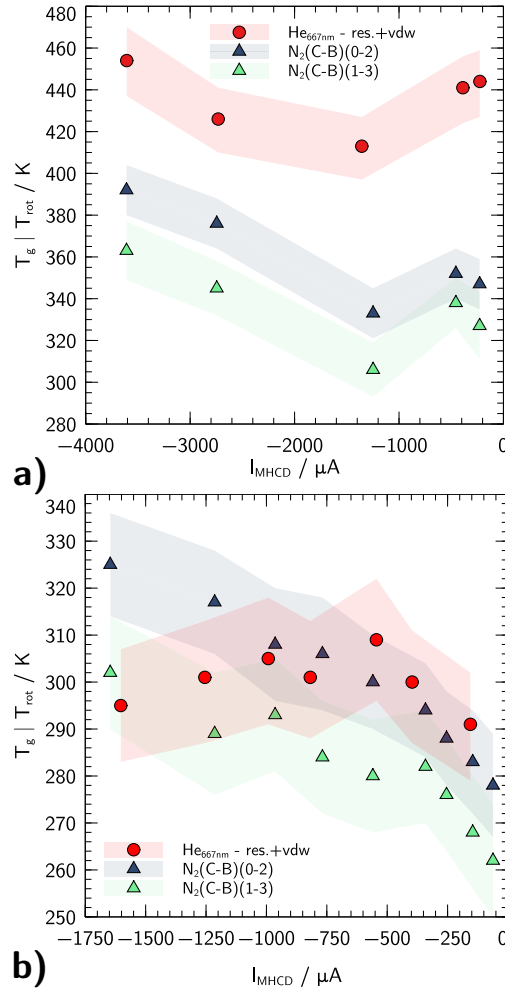


Figure 16. T_g and T_{rot} inside the MHCD cavity in case of inverted polarity in He at a) 666 mbar and b) 267 mbar. Conventionally and in agreement with figure 1, I_{MHCD} is negative. Thus, in this specific case the bottom of the cavity has an anodic role.

current is conventionally negative to be consistent with the schematic of the MHCD in figure 1. At 666 mbar, values found for T_g and T_{rot} are shown in figure 16a). While significant differences between T_{rot} and T_g are observed, it is important to highlight that all the curves follow rigorously the same trend with the evolution of I_{MHCD} . Intriguingly, the differential between the minimum and the maximum of each curve is about 50 K and evidencing a clear correlation between T_{rot} and T_g . The reason of the minimum while the current rises in absolute value is not clear though. One also notes that T_{rot} of each $N_2(C-B)$ bands is not in complete agreement to consider the rotational population distributions in total equilibrium. This is argued with the absence of overlapping of the confident intervals.

By reducing the gas pressure down to 267 mbar, the discharge could be ignited while the cathode sheath occupies a larger volume in the vicinity of the cavity opening. The

measured temperatures are shown in figure 16b). Remarkable agreements are found between T_{rot} and T_{g} . Due to the anodic cavity configuration of the MHCD operated at lower pressure, the current in absolute values ranges in a couple of hundreds μA . Consequently, T_{g} is expected to stay very close to the temperature of the laboratory. Indeed, values of T_{g} found after analysis of the atomic line profile confirm the reliability of the method. For the first time the results of this study show T_{rot} curves of both $\text{N}_2(\text{C})$ bands show convincing agreement with values obtained by line shape analysis. To explain this outcome, it is expected that the governing mechanisms responsible for the rotational population distributions allow the $\text{N}_2(\text{C})$ state to relax in equilibrium by R-T energy transfer. This relaxation seems to be more effective in a free-expanding plasma onto the cathode surface than in a confined plasma volume *within* a cathode cavity. Nevertheless, some values of T_{rot} with their respective confidence interval are below the ambient temperature, which is particularly true for the $\text{N}_2(\text{C-B})(1-3)$. While the reason have not been clearly identified, it corroborates with a relatively low neutral gas temperature of the discharge compared to the ambient temperature.

5. Concluding remarks

This study focuses on the neutral gas temperature (T_{g}) in DC MHCD elaborated on silicon substrate contributes to unveil new information on several aspects. It was successfully demonstrated that DC MHCD is able to operate in different gases, namely He, Ar and N_2 close to atmospheric pressure. To determine T_{g} within and in the vicinity of single micro-cavity, two *independent* optical emission spectroscopy approaches have been successfully investigated.

First, a thorough analysis of the line profile of resonant atomic transitions –Ar at 750.39 nm ($2p_1 \rightarrow 1s_2$) and He at 667.82 nm ($3^1\text{D} \rightarrow 2^1\text{P}$)– has been carried out to infer T_{g} values. The use of the reevaluated coefficient value $K(0, 1)$ and the consideration of Van der Waals interactions on the broadening were newly introduced to room temperature plasmas.

A second method based on the evaluation of the rotational temperature of N_2 bands is used. T_{rot} of vibrational bands $\text{N}_2(\text{C-B})(0-2)$ and $\text{N}_2(\text{C-B})(1-3)$ –present as trace in He discharge– are successfully determined by adjusting simulated spectra with a reduce set of parameters. A systematic 95 % confident interval is computed to provide consistent uncertainties of T_{rot} in order to support the validity of the method. In pure N_2 discharge, T_{rot} of $\text{N}_2(\text{C-B})(2-4)$ was also investigated.

Consistent values of T_{g} were found in Ar discharge ranging from 460 K to 860 K depending on the current. Unfortunately, T_{rot} of N_2 cannot be considered in Ar discharge due to a quasi-resonant energy transfer with its metastable states. However, the used of the resonant line analysis enabled us to investigate that T_{g} does not change significantly with small admixture of N_2 in the Ar discharge.

In He, T_{g} remains constant around 360 K and did not show a clear dependence of the current. The later is explained by a better thermal conductivity of He with the cavity material. Some discrepancies are reported between T_{rot} values of different excited vibrational states recorded simultaneously while the curve can show the same trend. Although T_{g} determined by line profile analysis may differ from T_{rot} , both show values in a similar range between room temperature and 480 K.

Measurements at the surface of the cavity opening revealed a gradient of T_{g} in Ar and He discharges. Interestingly, the temperature close to the cathode surface is lower than in the outer cavity expansion. In the case of He, this was partially found in

T_{rot} values while clear discrepancies were observed between $\text{N}_2(\text{C-B})(0-2)$ and $\text{N}_2(\text{C-B})(1-3)$. According to T_{g} results, this suggests that the wall of the cavity acts as a heat sink to better dissipate the heat flux. Meanwhile, it is expected that the SiO_2 layer thermally isolates the upper outer electrode.

The other aspect of this work dealt with the deviation of T_{rot} values of different N_2 bands in He and pure N_2 discharges. DC MHCD in N_2 shows T_{rot} from room temperature up to 550 K according to $\text{N}_2(\text{C-B})(0-2)$ and $\text{N}_2(\text{C-B})(1-3)$. $\text{N}_2(\text{C-B})(2-4)$ shows T_{rot} much lower without clear explanation. Discrepancies were also found between T_{rot} of $\text{N}_2(\text{C-B})(0-2)$ and $\text{N}_2(\text{C-B})(1-3)$ for He discharge. Switching the DC MHCD from *quasi-normal* regime to *self-pulsing* regime and then to anodic cavity led to conditions where T_{rot} are in agreement with T_{g} . From this, it is hypothesized that competitive energy transfer mechanisms are affecting the ro-vibrational population distributions of $\text{N}_2(\text{C})$ states, in particular the vibrational quenching *within* the C-state.

Further investigations should be performed in this direction, especially the measure of internal vibrational quenching in noble gases. While T_{rot} may be a good estimation of the range values of T_{g} , the present study demonstrates that detailed analysis of resonant atomic line profiles is of high interest. The latter is particularly true in a context where the neutral gas temperature must be known with a high relative accuracy like in environmental, in biological and in medical applications.

Acknowledgments

This research was partly funded by CNRS PEPS “Ingnerie Verte” M₁C_aDEAU. SI acknowledges CNRS INSIS for the junior scientist starting grant. GS was supported by the MESTD of the Republic of Serbia, Project 171034. SvdG acknowledges the project founding DFG-SFB1316. The authors thank the Réseau Plasmas froids (CNRS) for providing the calibration lamp. Discussions with Prof. N. Sadeghi and Prof. N. Semmar are gratefully acknowledged.

References

- [1] Bruggeman P and Brandenburg R 2013 *Journal of Physics D: Applied Physics* **46** 464001–464001 ISSN 0022-3727\|r1361-6463
- [2] Schoenbach K H, El-Habachi A, Shi W and Ciocca M 1997 *Plasma Sources Science and Technology* **6** 468 ISSN 0963-0252
- [3] Schoenbach K H and Becker K 2016 *The European Physical Journal D* **70** 29–29 ISSN 2015606181
- [4] Sun P P, Cho J H, Park C, Park S and Eden J G 2012 *IEEE Transactions on Plasma Science* **40** 2946–2950 ISSN 0093-3813
- [5] Lu X, Laroussi M and Puech V 2012 *Plasma Sources Science and Technology* **21** 034005–034005 ISSN 0963-0252
- [6] Lu X and Ostrikov K K 2018 *Applied Physics Reviews* **5** 031102
- [7] Boeuf J P, Yang L L and Pitchford L C 2013 *Journal of Physics D: Applied Physics* **46** 015201–015201
- [8] Liang Y, Li Y, Sun K, Zhang Q, Li W, Zhu W, Zhang J and Fang J 2015 *Plasma Processes and Polymers* **12** 1069–1074
- [9] Becker K H, Schoenbach K H and Eden J G 2006 *Journal of Physics D: Applied Physics* **39** R55–R70 ISSN 0022-3727, 1361-6463
- [10] Wang Q, Koleva I, Donnelly V M and Economou D J 2005 *Journal of Physics D: Applied Physics* **38** 1690 ISSN 0022-3727
- [11] Lazzaroni C, Chabert P, Rousseau A and Sadeghi N 2010 *Journal of Physics D: Applied Physics* **43** 124008 ISSN 0022-3727

- [12] Elkholy A, Nijdam S, van Veldhuizen E, Dam N, van Oijen J, Ebert U and de Goey L P H 2018 *Plasma Sources Science and Technology* **27** 055014 ISSN 0963-0252
- [13] Belostotskiy S G, Ouk T, Donnelly V M, Economou D J and Sadeghi N 2010 *Journal of Applied Physics* **107** 053305 ISSN 0021-8979
- [14] Majstorović G, Jovović J and Šišović N 2017 *Contributions to Plasma Physics* **57** 282–292 ISSN 08631042
- [15] Sismanoglu B N, Grigorov K G, Caetano R, Rezende M V and Hoyer Y D 2010 *The European Physical Journal D* **60** 505–516 ISSN 1434-6079
- [16] Penache C, Miclea M, Bräuning-Demian A, Hohn O, Schössler S, Jahnke T, Niemax K and Schmidt-Böcking H 2002 *Plasma Sources Science and Technology* **11** 476 ISSN 0963-0252
- [17] Yubero C, Rodero A, Dimitrijević M S, Gamero A and García M C 2017 *Spectrochimica Acta Part B: Atomic Spectroscopy* **129** 14–20 ISSN 0584-8547
- [18] Rodero A and García M C 2017 *Journal of Quantitative Spectroscopy and Radiative Transfer* **198** 93–103 ISSN 0022-4073
- [19] Michaud R, Felix V, Stolz A, Aubry O, Lefauchaux P, Dzikowski S, Schulz-von der Gathen V, Overzet L J and Dussart R 2018 *Plasma Sources Science and Technology* **27** 025005 ISSN 1361-6595
- [20] Felix V, Lefauchaux P, Aubry O, Golda J, Schulz-von der Gathen V, Overzet L J and Dussart R 2016 *Plasma Sources Science and Technology* **25** 025021–025021
- [21] Konjević N 1999 *Physics Reports* **316** 339–401 ISSN 0370-1573
- [22] Belmonte T, Noël C, Gries T, Martin J and Henrion G 2015 *Plasma Sources Science and Technology* **24** 064003–064003
- [23] Laux C O, Spence T G, Kruger C H and Zare R N 2003 *Plasma Sources Science and Technology* **12** 125 ISSN 0963-0252
- [24] Djurović S and Konjević N 2009 *Plasma Sources Science and Technology* **18** 035011 ISSN 0963-0252
- [25] Lewis E 1980 *Physics Reports* **58** 1–71 ISSN 03701573
- [26] Kramida A, Ralchenko Y, Reader J and NIST ASD Team 2018 *NIST Atomic Spectra Database Version 5.6*, [Online], National Institute of Standards and Technology, Gaithersburg, MD.
- [27] Belostotskiy S G, Khandelwal R, Wang Q, Donnelly V M, Economou D J and Sadeghi N 2008 *Applied Physics Letters* **92** 221507 ISSN 0003-6951
- [28] Dufour T, Overzet L J, Dussart R, Pitchford L C, Sadeghi N, Lefauchaux P, Kulsreshath M and Ranson P 2010 *The European Physical Journal D* **60** 565–574
- [29] Sahal-Bréchet S, Dimitrijević M S, Ben Nessib N and Moreau N 2019 STARK-B database <http://stark-b.obspm.fr> - Observatory of Paris, LERMA and Astronomical Observatory of Belgrade
- [30] Sahal-Bréchet S, Dimitrijević M S and Nessib N B 2017 *Open Astronomy* **20** 523–530
- [31] Griem H R 1997 *Principles of Plasma Spectroscopy (Cambridge Monographs on Plasma Physics no 2)* (Cambridge, [Eng.] ; New York: Cambridge University Press) ISBN 978-0-521-45504-6
- [32] Pipa A V, Ionikh Y Z, Chekichev V M, Dünnbier M and Reuter S 2015 *Applied Physics Letters* **106** 244104–244104
- [33] Yubero C, Dimitrijević M S, García M C and Calzada M D 2007 *Spectrochimica Acta Part B: Atomic Spectroscopy* **62** 169–176 ISSN 0584-8547
- [34] Konjević N, Lesage A, Fuhr J R and Wiese W L 2002 *Journal of Physical and Chemical Reference Data* **31** 819–927 ISSN 0047-2689
- [35] Ranson P and Chapelle J 1974 *Journal of Quantitative Spectroscopy and Radiative Transfer* **14** 1–18 ISSN 0022-4073
- [36] Miller T M 2017 Atomic and Molecular Polarizabilities *CRC Handbook of Chemistry and Physics: A Ready-Reference Book of Chemical and Physical Data*. ed Haynes W M, Lide D R and Bruno T J (CRC Press) pp 10–188 97th ed ISBN 978-1-4987-5429-3
- [37] Thompson P, Cox D E and Hastings J B 1987 *Journal of Applied Crystallography* **20** 79–83 ISSN 0021-8898
- [38] Ida T, Ando M and Toraya H 2000 *Journal of Applied Crystallography* **33** 1311–1316 ISSN 0021-8898
- [39] Bruggeman P J, Sadeghi N, Schram D C and Linss V 2014 *Plasma Sources Science and Technology* **23** 023001 ISSN 0963-0252, 1361-6595
- [40] Wang Q, Doll F, Donnelly V M, Economou D J, Sadeghi N and Franz G F 2007 *Journal of Physics D: Applied Physics* **40** 4202 ISSN 0022-3727
- [41] Herzberg G 1950 *Molecular Spectra and Molecular Structure. Vol. 1: Spectra of Diatomic Molecules* 2nd ed vol 1 (New York: D. Van Nostrand Reinhold, inc.)
- [42] Kovács I 1969 *Rotational structure in the spectra of diatomic molecules* (London: Hilger) ISBN

- 978-0-85274-142-9
- [43] Roux F, Michaud F and Vervloet M 1993 *Journal of Molecular Spectroscopy* **158** 270–277 ISSN 0022-2852
- [44] Pearse R W B and Gaydon A G 1976 *The Identification of Molecular Spectra* (London: Chapman & Hall) ISBN 978-94-009-5760-2 978-94-009-5758-9
- [45] Taylor J R 1997 *An Introduction to Error Analysis: The Study of Uncertainties in Physical Measurements* 2nd ed (Sausalito, Calif: University Science Books) ISBN 978-0-935702-42-2 978-0-935702-75-0
- [46] Allen C W 1976 *Astrophysical Quantities* 3rd ed (London : [Atlantic Highlands] N.J: Athelone Press ; [Distributor for] U.S.A. and Canada, Humanities Press) ISBN 978-0-485-11150-7
- [47] Kulsreshath M K, Schwaederle L, Overzet L J, Lefauchaux P, Ladroue J, Tillocher T, Aubry O, Woytasik M, G Schelcher and Dussart R 2012 *Journal of Physics D: Applied Physics* **45** 285202 ISSN 0022-3727
- [48] Boeuf J P, Pitchford L C and Schoenbach K H 2005 *Applied Physics Letters* **86** 071501 ISSN 00036951
- [49] Huber M L and Harvey A H 2017 Thermal conductivity of gases *CRC Handbook of Chemistry and Physics: A Ready-Reference Book of Chemical and Physical Data*. ed Haynes W M, Lide D R and Bruno T J (CRC Press) pp 6–252 97th ed ISBN 978-1-4987-5429-3
- [50] Nguyen T D and Sadeghi N 1983 *Chemical Physics* **79** 41–55 ISSN 0301-0104
- [51] Dilecce G, Ambrico P F and De Benedictis S 2007 *Chemical Physics Letters* **444** 39–43 ISSN 0009-2614
- [52] Bradley P E and Radebaugh R 2017 Properties of selected materials at cryogenic temperatures *CRC Handbook of Chemistry and Physics: A Ready-Reference Book of Chemical and Physical Data*. ed Haynes W M, Lide D R and Bruno T J (CRC Press) pp 12–204 97th ed ISBN 978-1-4987-5429-3
- [53] Gat E, Gherardi N, Lemoing S, Massines F and Ricard A 1999 *Chemical Physics Letters* **306** 263–268 ISSN 0009-2614
- [54] Bibinov N K, Fateev A A and Wiesemann K 2001 *Journal of Physics D: Applied Physics* **34** 1819 ISSN 0022-3727
- [55] Iseni S, Bruggeman P J, Weltmann K D and Reuter S 2016 *Applied Physics Letters* **108** 184101–184101
- [56] Chabert P, Lazzaroni C and Rousseau A 2010 *Journal of Applied Physics* **108** 113307 ISSN 0021-8979
- [57] Wollny A, Hemke T, Gebhardt M, Peter Brinkmann R, Boettner H, Winter J, Schulz-von der Gathen V, Xiong Z, Kushner M J and Mussenbrock T 2011 *Applied Physics Letters* **99** 141504–141504
- [58] Hsu D D and Graves D B 2003 *Journal of Physics D: Applied Physics* **36** 2898–2907 ISSN 0022-3727, 1361-6463
- [59] Jovović J and Konjević N 2014 *The European Physical Journal D* **68** 60 ISSN 1434-6079