



HAL
open science

**Synthesis, structural elucidation, spectroscopic and
Hirshfeld surface analysis of a new organic
cyclohexaphosphate, $(C_{12}H_{19}N_2)_4(Li)_2(P_6O_{18})(H_2O)_4$**

M. Arbi, L. Khedhiri, A. Hamdi, V. Ferretti, Fabrice Lefebvre, Christian
Jelsch, C. Nasr

► **To cite this version:**

M. Arbi, L. Khedhiri, A. Hamdi, V. Ferretti, Fabrice Lefebvre, et al.. Synthesis, structural elucidation, spectroscopic and Hirshfeld surface analysis of a new organic cyclohexaphosphate, $(C_{12}H_{19}N_2)_4(Li)_2(P_6O_{18})(H_2O)_4$. Chemical Data Collections, 2019, 20, pp.100188. 10.1016/j.cdc.2019.100188 . hal-02112122

HAL Id: hal-02112122

<https://hal.science/hal-02112122>

Submitted on 26 Apr 2019

HAL is a multi-disciplinary open access archive for the deposit and dissemination of scientific research documents, whether they are published or not. The documents may come from teaching and research institutions in France or abroad, or from public or private research centers.

L'archive ouverte pluridisciplinaire **HAL**, est destinée au dépôt et à la diffusion de documents scientifiques de niveau recherche, publiés ou non, émanant des établissements d'enseignement et de recherche français ou étrangers, des laboratoires publics ou privés.

Published as :: Arbi, M., Khedhiri, L., Hamdi, A., Ferretti, V., Lefebvre, F., Jelsch, C., & Nasr, CB. (2019). Synthesis, structural elucidation, spectroscopic and Hirshfeld surface analysis of a new organic cyclohexaphosphate, $(C_{12}H_{19}N_2)_4(Li)_2(P_6O_{18})(H_2O)_4$. *Chemical Data Collections*, 20, 100188. doi.org/10.1016/j.cdc.2019.100188

**Synthesis, structural elucidation, spectroscopic and Hirshfeld surface
analysis of a new organic cyclohexaphosphate,
 $(C_{12}H_{19}N_2)_4(Li)_2(P_6O_{18})(H_2O)_4$**

M. Arbi^a, L. Khedhiri^a, A. Hamdi^a, V. Ferretti^b, F. Lefebvre^c, C. Jelsch^d, C. Ben Nasr^{a*}

^aLaboratoire de Chimie des Matériaux, Faculté des Sciences de Bizerte, 7021 Zarzouna, Université de Carthage, Tunisie.

^bDepartment of Chemical and Pharmaceutical Sciences and Center for Structural Diffraction, via Fossato di Mortara 17, I-44121 Ferrara, Italy.

^cLaboratoire de Chimie Organométallique de Surface (LCOMS), Ecole Supérieure de Chimie Physique Electronique, 69626 Villeurbanne Cedex, France.

^dCRM², CNRS, Institut Jean Barriol, Université de Lorraine, Vandoeuvre les Nancy CEDEX, France.

Corresponding e-mail: cherifbennasr48@gmail.com

Abstract

The synthesis and properties of the new tetrakis [1-(2,3-dimethylphenyl)piperazinium] bis(lithium-ion) cyclohexaphosphate tetrahydrate, $(C_{12}H_{19}N_2)_4(Li)_2(P_6O_{18})(H_2O)_4$ are reported. This compound was characterized by X-ray diffraction (XRD), spectroscopy (NMR and FT-IR) and Hirshfeld analysis. Electronic properties such as HOMO and LUMO energies

were derived. The solved molecular structure of $(C_{12}H_{19}N_2)_4(Li)_2(P_6O_{18})(H_2O)_4$ revealed that the atomic arrangement of **(I)** is built up from alternated organic and inorganic species. Adjacent P_6O_{18} rings are linked via corner-sharing by LiO_5 pseudo-square pyramids, generating anionic layers parallel to the (001) crystallographic plane at $z=1/2$ with the organic groups located between them. The 3D-supramolecular network is stabilized by N-H...O and O-H...O hydrogen bonds, by $O^{\delta-}...Li^+$ ionic bridges and also by extensive hydrophobic interactions involving the organic cations as checked by Hirshfeld surface analysis. The van der Waals contacts play a key role in the consolidation of the packing of the structure of $(C_{12}H_{19}N_2)_4(Li)_2(P_6O_{18})(H_2O)_4$.

Keywords: Cyclohexaphosphate; X-ray diffraction analysis; Hirshfeld surface; Enrichment ratio; MAS-NMR spectroscopy.

1. Rationale

Inorganic-organic compounds provide a class of materials displaying interesting technological importance [1]. The ability to combine the properties of organic and inorganic compounds within one single compound leads to interesting crystal structures [2]. In these materials, the crystal packing is ensured by ionic bridges, hydrogen bonds and Vander Waals contacts. These non-covalent forces play a vital role in molecular recognition, self-organization of molecules and highly efficient and specific biological reactions associated with supramolecular chemistry [3]. In this area, the literature reports several cyclohexaphosphates of mixed cations (organic-lithium) which have been known and structurally characterized [4-8]. In this work, we report the preparation and the structural investigation of a new cyclohexaphosphate, $[C_{12}H_{19}N_2]_4Li_2P_6O_{18} \cdot 4H_2O$, where the organic species are the piperazinium groups. Piperazine derivatives have wide range of applications in

pharmaceuticals as antimalarial [9], anti-tuberculosis [10], antitumor [11], anticancer [12] and antiviral agents [13].

2. Procedure

2.1. Chemical Preparation

An aqueous solution of $\text{H}_6\text{P}_6\text{O}_{18}$ (10 mL, 2 mmol) was added dropwise to 5 mL of an ethanolic solution of 1-(2,3-dimethylphenyl)piperazine (4 mmol) purchased from Sigma-Aldrich. The resulting solution was stirred at room temperature for 30 min and allowed to stand over a week to give colorless prismatic crystals. The cyclohexaphosphoric acid $\text{H}_6\text{P}_6\text{O}_{18}$, was produced from $\text{Li}_6\text{P}_6\text{O}_{18} \cdot 6\text{H}_2\text{O}$, prepared according to the procedure of Schülke and Kayser [14], through an ion-exchange resin in H-state (Amberlite IR 120). The obtained compound, is stable in air at room temperature for more than several months. A yield of 80% was calculated for $[\text{C}_{12}\text{H}_{19}\text{N}_2]_4\text{Li}_2\text{P}_6\text{O}_{18} \cdot 4\text{H}_2\text{O}$.

2.2. X-ray single crystal structural analysis

Suitable crystals of $(\text{C}_{12}\text{H}_{19}\text{N}_2)_4(\text{Li})_2(\text{P}_6\text{O}_{18})(\text{H}_2\text{O})_4$ were selected and mounted on a Nonius Kappa CCD diffractometer, using Mo radiation ($\lambda = 0.71073 \text{ \AA}$). Intensities were collected at 295 K and were corrected for Lorentz, polarization and absorption effects [15]. The structure was solved by direct methods with the SIR97 suite of programs [16] and refinement was performed on F^2 by full matrix least-squares methods with all non-H atoms anisotropic with SHELXL2014/7 [17]. The H atoms were included on calculated positions, riding on their carrier atoms, apart from those bound to N and O atoms, located in the difference Fourier map and refined isotropically. All calculations were performed using the WINGX system of programs [18]. The drawings were made with Diamond [19]. Some data collection parameters and results of the structure determination are given in **Table 1**.

2.3. NMR and IR measurements

The NMR powder spectra were recorded on a solid-state high-resolution Bruker Avance-500 spectrometer operating at 125.81 MHz for ^{13}C , 50.50 MHz for ^{15}N and 202.51 MHz for ^{31}P with a classical 4 mm BB/1H dual MAS probe allowing spinning rates up to 10 - 14 kHz. ^{13}C , ^{15}N and ^{31}P NMR chemical shifts are given relative to external tetramethylsilane, neat nitromethane and 85 wt. % phosphoric acid, respectively (precision 0.5 ppm). The ^7Li MAS NMR spectrum was recorded on a Bruker Avance-300 spectrometer operating at 116.75 MHz. For ^{13}C and ^{15}N , the spectra were recorded by use of cross polarization (CP) from protons (contact time 2ms). Before recording the spectra, it was checked that there was a sufficient delay between the scans allowing a full relaxation of the protons, typically 30 s in the present case. For ^{31}P , the isotropic chemical shift values (δ_{iso}) of the three NMR species were determined from the position of the peaks that did not change in the spectra taken with different spinning rates. The analysis of the ^{31}P MAS-NMR spectrum was carried out by using the Bruker program WINFIT [20]. The intensities of the sidebands were computed by the method of Herzfeld and Berger [21]. The chemical shift anisotropy ($\Delta\delta_{\text{CS}}$) and the asymmetric parameter (η) for the three NMR components were then determined. The IR spectra were recorded in the 4000-400 cm^{-1} range with a ‘‘Perkin–Elmer FTIR’’ spectrophotometer 1000 using samples dispersed in spectroscopically pure KBr pressed into a pellet.

3. Data, value and validation

3.1. Crystal structure analysis

An ORTEP view of the molecular structure of **(I)** with the atom numbering scheme is shown in **Fig. 1** while the atomic arrangement is shown in **Figs. 2 and 3**. The asymmetric unit of **(I)** includes one-half of a $\text{P}_6\text{O}_{18}^{6-}$ anion lying on an inversion center ($\frac{1}{2}, 0, \frac{1}{2}$), one Li^+ cation, two water molecules out of which one (O1W) is coordinated to the lithium cation and

two 1-(2,3-dimethylphenyl) piperazinium cations (**Fig. 1**). The $\text{P}_6\text{O}_{18}^{6-}$ oxo-anion has a chair-shaped 12-membered ring. All phosphorus and oxygen atoms are found in general positions. Due to the inversion symmetry, the P_6O_{18} moiety is built up by three independent PO_4 tetrahedra. The P-P-P angles of 96.03(2), 126.89(2) and 137.05(2) $^\circ$ show that the rings are significantly distorted from the ideal three-fold symmetry; the total puckering amplitude Q , measuring the overall degree of puckering according to Cremer and Pople [22], is 1.8883(3) Å. It should be noted that these large deviations are commonly observed in cyclohexaphosphates with a ring of low local symmetry [23, 24], as in the title compound. For example, the P-P-P angles in $\text{Cs}_6\text{P}_6\text{O}_{18}\cdot 6\text{H}_2\text{O}$ [25], ranging from 93.2 to 145.5 $^\circ$, exhibit the largest distortion measured up to now. The great flexibility of the 12-membered P_6O_{18} rings can explain the discrepancy between large rings and the small ones.

The P-O and P-P distances and the P-O-P or O-P-O angles are shown in **Table 2**. The average values of the distortion indices [26] are $\text{DI}(\text{PO}) = 0.042$, $\text{DI}(\text{OPO}) = 0.040$ and $\text{DI}(\text{OO}) = 0.013$ (**Table 3**). These geometrical characteristics of the PO_4 tetrahedra show, in spite of the P-P-P angles deformation, no significant difference in deviation from those observed in other cyclohexaphosphates having the same internal symmetry such as in $(\text{C}_6\text{H}_7\text{ClN})_6\text{P}_6\text{O}_{18}\cdot 0.5(\text{H}_2\text{O})$ [27] and $(\text{C}_9\text{H}_{14}\text{N})_4(\text{H}_3\text{O})_2(\text{P}_6\text{O}_{18})$ [28].

The lithium cation is five-coordinated, being coordinated to one water molecule O1W and four O atoms O(E) belonging to two $\text{P}_6\text{O}_{18}^{6-}$ ring anions (**Fig. 2c**). The geometrical features of LiO_5 pseudo-square pyramids are in accordance with values observed in $\text{Li}_6\text{P}_6\text{O}_{18}\cdot 10\text{H}_2\text{O}$ [29]. The Li-O distances range from 1.956(4) to 2.406(4) Å (**Table 2**). The smallest distance between two pyramidal centers is 3.003(2) Å.

Two organic entities $[\text{C}_{12}\text{H}_{19}\text{N}_2]^+$ coexist in the asymmetric unit assuring the electric neutrality of the total complex. The benzyl rings (C5-C10) and (C17-C22) are essentially planar with a root mean square (r.m.s.) deviation of 0.0047 and 0.0052 Å, respectively and are

orientated at an angle of 29.8(5)/ 30.2(3)° with respect to the piperazine rings. Both piperazine rings (N1-N2/C1-C4) and (N3-N4/C13-C16) adopt a chair conformation. The puckering parameters for [C₁₂H₁₉N₂(1)]⁺ are QT = 0.577 (2) Å, θ = 0.7 (2)° and φ = 326 (2) and, for [C₁₂H₁₉N₂(2)]⁺: QT = 0.557 (2) Å, θ = 0.6 (2)° and φ = 332 (2) [22]. The atoms N1, N2, N3 and N4 are deviating by -0.683 (2), 0.657 (2) and -0.673 (2), 0.557 (2) Å respectively from the least-squares plane defined by the remaining atoms in each ring. The interatomic bond lengths (C-C, N-C) and angles (C-C-C, C-N-C) (Table 4) do not show a significant deviation from those reported in the related compound bis[1-(2,3-dimethylphenyl)piperazine1,4-dium] bis(oxonium) cyclohexaphosphate dihydrate [30].

The P₆O₁₈⁶⁻ anions are connected through corner sharing by lithium cations and the two hydrogen atoms of the water molecule O1W to form a hetero-anion of formula [Li₂P₆O₁₈·H₂O]⁴⁻ extending along the *a* direction at *y*=0 as shown in Fig. 2-b. The remaining water molecules, O2W1 and O2W2, with an occupancy ratio of ½ for each one, bridge the anionic rings through O-H...O hydrogen bonds to form 2-D layers parallel to the (001) crystallographic plane as shown in Fig. 2-a and located at *z* = ½ (Fig. 3). The anchorage of the organic cations [C₁₂H₁₉N₂]⁺ onto successive layers is made by N-H...O bonds involving the hydrogen atoms of the -NH₂ groups thus ensuring the interconnection between layers, and giving rise to a three-dimensional network (Fig 3-a, 3-b). The geometrical features of the H-bonds are listed in Table 5. All these hydrogen bonds, van der Waals, and electrostatic interactions between organic cations and cyclohexaphosphate anions increase the stability of the crystal structure.

3.2. Crystal contacts

The Hirshfeld surface was generated using MoProViewer [31] around the different entities of the title compound. Hirshfeld surfaces are produced through the partitioning of

space within a crystal where the ratio of promolecule to procrystal electron densities is equal to 0.5. As the asymmetric unit contains only one half of cyclohexaphosphate moiety, the Hirshfeld calculation was done on two copies of the asymmetric unit containing one P_6O_{18} , four $C_{12}H_{19}N_2$, two lithium and two copies of the two water molecules. In order to have integral surfaces, symmetry related molecules were chosen in the crystal packing that are not in contact with each other.

The Hirshfeld surface analysis was also performed using the Crystal Explorer 3.1 software [32] and the TONTO [33] system. In the crystal structure, intermolecular interactions were analyzed for two copies of the asymmetric unit using 2D fingerprint maps (Fig. 4). The 2D fingerprint plots can be decomposed to highlight a particular pair of atoms in close contact. The contributions from the main interaction types (H...H, C...H, O...H, O...Li) are shown in the fingerprint plots (Fig. 4). The atoms in closest proximity are those found in the H...H and O...H contacts.

The enrichment ratios [34] of contacts between the different chemical species were computed with MoProViewer in order to highlight which contacts are over-represented and are likely to represent energetically strong interactions and the driving force in crystal formation. Globally, hydrogen represents the majority of chemical species (55%) present on the Hirshfeld surface, followed by oxygen and carbon (Table 6). The hydrophobic atoms Hc and C constitute close to half of the molecular surface.

After the hydrophobic Hc...Hc contacts, the Ho/n...O hydrogen bonds involving the hexacyclophosphate, the water molecules and the NH_2^+ group are the most abundant polar interaction types and are quite enriched at $E = 2.7$ (Table 6). The O...Li attractive ionic interaction is the most enriched with $E = 3.2$ and the lithium cation is almost exclusively interacting with five oxygen atoms (Tables 6 and 2). The contacts made by the phosphorous

atoms are presumably mostly the consequence of the interactions made by the P₆O₁₈ oxygen atoms.

The C...Hc and Hc...Hc contacts constitute a significant part of the interaction surface and all hydrophobic contacts types involving C and Hc are over-represented. The Hc...C contacts are notably enriched at $E = 1.84$ as the crystal shows some C-H... π interactions which are considered as weak hydrogen bonds. The C5-C10 six-membered aromatic ring interacts with CH₃ and CH₂ groups on either side (**Fig. 5**). The C17-C22 C6 ring is also involved in some C...C π stacking.

The weak Hc...O hydrogen bonds are quite under-represented ($E = 0.6$) due to competition with the Hn/o...O and Li...O stronger electrostatic interactions.

The two independent organic cations show different torsion angles between the two rings (C10-C5-N1-C1=16.00(2)° while C22-C17-N3-C13=37(2)°). They show contact types with their environment which are globally similar as the contacts C_{xy} of the two cations are 94% correlated. When the enrichment ratios are compared, the correlation is only 31%. **Fig. 5** shows the Hirshfeld surface of the two independent organic molecules colored according to their local contact type. The two molecules display locally different contact types on their surface, with the exception of the region above the C6 aromatic ring which is involved in extensive C...Hc interactions in both cases.

3.3. HOMO-LUMO analysis

The frontier molecular orbitals determine the way of a molecule interacts with other entities and helps to determine its kinetic stability and chemical reactivity. HOMO-LUMO orbitals were computed for the organic molecule by the DFT- B3LYP/6-31+G* method. Three different calculations were made, the two molecules of the asymmetric unit for which the C and N positions were taken from the crystal data and a full optimization of all atoms.

These calculations were made with the Gaussian 09 program and the results are displayed in **Fig. 6**. The calculated HOMO and LUMO orbitals are shown in the order: total optimization, Ligand 1 and Ligand 2. In the three cases quite the same results were obtained: The highest occupied molecular orbital (HOMO) is located mainly on the aromatic ring and on the nitrogen atom which is linked to it with a calculated energy of -9.217 eV, and the LUMO is concentrated on the NH₂ group with a calculated energy is -4.755 eV. The large energy gap between the HOMO and LUMO orbitals (4.46 eV) shows that the molecule is kinetically stable and has a small chemical reactivity [36, 37]. The energy distributions of the different are given in **Fig. 7** and are also quite similar in the three cases, showing that there is no high constraint in the crystal.

3.4. Molecular Electrostatic Potential Analysis

The molecular electrostatic potential of the title compound has been computed at the B3LYP/6-31+G* level and is shown in **Fig. 8**. Moreover, blue and red colors indicate the positive and negative potentials, respectively. As it can be seen from **Fig. 8**, the electrostatic potential maps are color-coded and are subdivided into many regions where those various colors are used to identify different potentials. Intermediate potentials are assigned to colors according to the following color spectrum: red < orange < yellow < green < blue. As seen from **Fig. 8**, the red region is located around the aromatic ring, while the blue region is around the NH₂ group of the piperazine molecule.

3.5. NMR results

The ¹³C CP-MAS NMR spectrum of (C₁₂H₁₉N₂)₄(Li)₂(P₆O₁₈)(H₂O)₄ is shown on **Fig. 9**. The spectrum recorded with a contact time of 2 ms shows the existence of three sets of peaks at 10 - 20 ppm, related to the methyl groups, 40 - 50 ppm, corresponding to the piperazine carbon atoms and in the area of the aromatic carbons, between 110 and 150 ppm,

in agreement with the organic structure. However, the presence of three peaks at 10.2, 15.9 and 20.6 ppm with an intensity ratio 1:1:2, corresponding to four methyl groups, clearly indicates the presence of two organic molecules in the asymmetric unit, in agreement with the X-ray results.

To identify the aromatic carbons which are not bound to protons, we have recorded the spectrum with a very short contact time (100 μ s). The two spectra are shown in **Fig. 10**. Obviously the 5 peaks on the left are not related to protons because they have a much lower intensity when the contact time is very low. This result is helpful for the attribution of the peaks to the various carbon atoms of the two organic molecules of the asymmetric unit.

The 2D HETCOR carbon-proton spectrum is shown in **Fig. 11**. It exhibits three families of correlations corresponding to the methyl groups, the CH₂ groups of the piperazine ring and the aromatic carbon atoms linked to protons (the spectrum was recorded with a short contact time, 200 μ s). This spectrum confirms also that the five peaks in the range 129-150 ppm of the ¹³C CP-MAS NMR spectrum correspond to the aromatic carbon atoms not bonded to the hydrogen atoms, as they do not show any correlation.

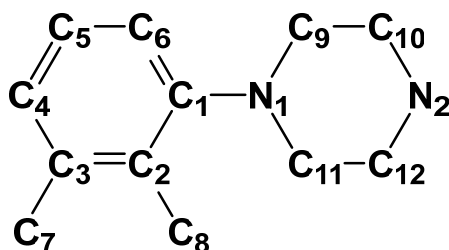
The solid state ³¹P spectrum of the sample is formed by three components (**Fig. 12**) corresponding to the three crystallographically independent phosphorus atoms. As the chemical environments of all P-atoms are similar in the cyclohexaphosphate, resolved components must correspond to different crystallographic sites occupied by P-atoms. On the other hand, distortions of the polyhedra are responsible for the observed chemical shift anisotropies and for the detection of the spinning side band patterns covering important regions of the ³¹P-NMR spectra. Spectral regions occupied by these bands are proportional to tetrahedral distortions.

The ¹⁵N CP-MAS NMR spectrum of the title compound, shown in **Fig. 13**, is also in good agreement with the X-ray structure. Indeed, it exhibits four well-defined resonances

corresponding to the four crystallographically independent nitrogen atoms, in agreement with two organic cations in the unit cell.

The solid state ^7Li spectrum of the sample is formed by only one peak with its corresponding satellite spinning bands spaced at equal intervals, indicating some anisotropy of chemical shift (**Fig. 14-a**). This result is consistent with the presence of only one lithium site in the asymmetric unit of the compound as revealed by single crystal X-ray diffraction. **Fig. 14-b** shows that the linewidth is larger when the spectrum is recorded without decoupling. This is due to the coupling of lithium with the hydrogen atoms of the water molecules coordinated to it.

Theoretical calculations were undertaken in order to assign the NMR resonances to the different crystallographic non-equivalent carbon atoms of the unit cell. The chemical shifts calculations were made on the organic molecules only. X-ray diffraction data give C-H or N-H distances which are too small compared to what is usually observed (typically below 0.1 nm) due to the fact that this method is not sensitive to the nuclei but to the electrons and so gives values corresponding to distances between the barycenters of electronic charges. As a consequence, the positions of the hydrogen atoms were first optimized with the B3LYP/6-31+G* method, the other atoms being frozen. Then, the absolute chemical shifts were calculated using the GIAO method. Finally, the calculated values were calibrated relative to tetramethylsilane with $\delta_{\text{exp}} = 0$ ppm. The atoms are labeled as depicted below:



The results are listed on **Table 7**. Clearly, there is a very good agreement between the experimental and the theoretical values, allowing unambiguously the attribution of the

different NMR signals, even if the calculated values for the isotropic chemical shifts are sometimes far away from the experimental ones.

3.6. Vibrational FTR-IR spectroscopy

The infrared spectrum (**Fig. 15**) shows a broad band centered at 3390 cm^{-1} which is assigned to the O-H and N-H stretching vibrations. Its broadness is indicative of the presence of hydrogen bonds in this compound as evidenced by XRD investigation. The lowering of wavenumbers can be explained by the involvement of the secondary amine ($-\text{NH}$) in H-bonding interactions [38]. Asymmetric and symmetric C-H stretching vibrations occur in the region between 3025 and 2842 cm^{-1} . The observed bands in the $[1650\text{--}1350\text{ cm}^{-1}]$ region are due to the bending vibrations of O-H, CH_2 and NH_2 [39]. Various strong stretching and bending vibration bands, observed in the range of $1350\text{--}660\text{ cm}^{-1}$, are characteristics of the cyclohexaphosphoric ring [40]. Indeed, the asymmetric and symmetric stretching vibrations of $\nu_{\text{as}}(\text{OPO})^-$ and $\nu_{\text{s}}(\text{OPO})^-$ are found in the $1350\text{--}1180\text{ cm}^{-1}$ and $1180\text{--}1060\text{ cm}^{-1}$ ranges, respectively. Those which appear in the $1060\text{--}950\text{ cm}^{-1}$ and $850\text{--}660\text{ cm}^{-1}$ regions are attributed to $\nu_{\text{as}}(\text{POP})$ and $\nu_{\text{s}}(\text{POP})$ respectively. In the assignment of these bands, a special caution must be paid because of their overlapping with stretching $\nu(\text{C-N})$ and twisting $\tau(-\text{CH}_2)$ modes. Wavenumbers below 600 cm^{-1} are related to the P_6O_{18} ring bending vibrations.

4. Conclusion

The use of the protonated 1-(2,3-dimethylphenyl)piperazine ($\text{C}_{12}\text{H}_{19}\text{N}_2$)⁺ as organic cation in the cyclohexaphosphate matrix leads to a new organic cyclohexaphosphate crystal with the chemical formula $(\text{C}_{12}\text{H}_{19}\text{N}_2)_4(\text{Li})_2(\text{P}_6\text{O}_{18})(\text{H}_2\text{O})_4$. Crystal structure of this compound was found to be built by layers of $[(\text{Li})_2(\text{P}_6\text{O}_{18})(\text{H}_2\text{O})_4]^{4+}$ parallel to the (001) crystallographic plane and located at $z = \frac{1}{2}$. The two independent organic molecules form, between these layers, two planes where the charged $>\text{NH}^+$ groups are facing, on each side, the inorganic part. The organic cations perform the three dimensional cohesion mainly through hydrophobic

interactions as well as strong N-H...O and a few weak C-H...O hydrogen bonds with the water and C₆H₁₈ moieties. The inorganic parts perform mostly strong N/O-H...O hydrogen bonds and Li...O electrostatic bridges to stabilize the three-dimensional network.

NMR signals are in full agreement with the crystallographic data. The theoretical calculations results are in agreement with the experimental geometric parameters.

Acknowledgment

The authors are grateful to the Tunisian Ministry of Higher Education and Scientific Research for financial support.

Supplementary data

Crystallographic data for the structural analysis have been deposited at the Cambridge Crystallographic Data Centre, CCDC No 1551864. These data can be obtained free of charge via <http://www.ccdc.cam.ac.uk/conts/retrieving.html>, or from the CCDC, 12 Union Road, Cambridge, CB2 1EZ, UK: fax: (+44) 01223-336-033; e-mail: deposit@ccdc.cam.ac.

References

- [1] D. N. Dybtsev, H. Chun, S. H. Yoon, D. Kim, K. Kim, (2004). *J. Am. Chem. Soc.*, 126, 32-33.
- [2] D.W. Smith, (1976), *Chem. Rev.*, 21, 93-158.
- [3] B. H. Ye, X. M. Chem, G. Q. Xue, L. N. Ji, (1998), *J. . Chem. Soc., Dalton Trans.*, 17, 2827-2832.
- [4] I. Ameer, S. Abid, S. S. Al-Deyab, M. Rzaigui. *Acta Cryst. E*69 (2013) m305-m306
- [5] R. Bel Haj Salah, L. Khedhiri, M. Rzaigui, *X-Ray Struct. Anal. Online*. 26 (2010) 45-46.
- [6] L. Khedhiri, *X-Ray Struct. Anal. Online*. 20 (2004) x143-x144.

- [7] O. Amri, S. Abid, M. Rzaigui, Phosphorus Sulfur Silicon Relat. Elem, 184, (2009) 766-777.
- [8] L. Khedhiri, V. Ferretti, C. Jelsch, M. Rzaigui, C. Ben Nasr, Journal of Molecular Structure 1134 (2017) 828-834
- [9] K. Kaur, M. Jain, R. P. Reddy, R. Jain, (2010). Eur. J. Med. Chem. 45, 3245–3264.
- [10] S. Eswaran, A. V. Adhikari, I. H. Chowdhury, N. K. Pal, K. D. Thomas, (2010), Eur. J. Med. Chem. 45, 3374–3383.
- [11] L. C. Chou, M. T. Tsai, M. H. Hsu, S. H. Wang, T. D. Way, C. H. Huang, H. Y. Lin, K. Qian, Y. Dong, K. H. Lee, L. J. Huang, S. C. Kuo, (2010). J. Med. Chem. 53, 8047–8058.
- [12] Y. L. Chen, H. M. Hung, C. M. Lu, K. C. Li, C. C. Tzeng (2004). Bioorg. Med. Chem. 12, 6539–6546.
- [13] R. V. Shingalapur, K. M. Hosamani, R. S. Keri, (2009). Eur. J. Med. Chem. 44, 4244–4248.
- [14] U. Schülke, R. Kayser (1985). Z. Anorg. Allg. Chem. 531, 167–175.
- [15] R. H. Blessing, *Acta Crystallogr., Sect. A* , 1995, **51**, 33
- [16] A. Altomare, M. C. Burla, M. Camalli, G. L. Casciarano, C. Giacovazzo, A. Guagliardi, A. Grazia, G. Moliterni, G. Polidori, R. J. Spagna, *SIR97: a new tool for crystal structure determination and refinement*, J. App. Cryst. 32 (1999) 115-119.
- [17] G. M. Sheldrick, SHELXTL Version 2014/7. <http://shelx.uni-ac.gwdg.de/SHELX/index.php>.
- [18] L. J. Farrugia, *WinGX* suite for small-molecule single-crystal crystallography, J. Appl. Crystallogr. 32 (1999) 837-838
- [19] K. Brandenburg (1998). Diamond Version 2.0 Impact GbR. Bonn, Germany.
- [20] Bruker WINFIT Program' Bruker Rep. 140 (1994) 43-46.

- [21] J. Herzfeld, A. L. Berger, *J. Chem. Phys.* 73 (1980) 6021-6030.
- [22] D. Cremer, J. A. Pople, *J. Amer. Chem. Soc.* 97 (1975) 1354-1358
- [23] L. Khedhiri, C. Ben Nasr, M. Rzaigui, F. Lefebvre, *Helv. Chim. Acta.* 86 (2003) 2662-2670.
- [24] L. Khedhiri, R. Bel Haj salah, W. Belam, M. Rzaigui, *Acta Cryst.* E63 (2007) 2269-2271.
- [25] M. T. Averbuch-Pouchot, A. Durif, *Eur. J. Solid State Inorg. Chem.* 28 (1991) 9-22.
- [26] W. H. Baur. *Acta Cryst.* B30 (1974) 1195-1215
- [27] L. Khedhiri, E. Jeanneau, F. Lefebvre, M. Rzaigui, C. Ben Nasr, *J. Mol. Struct.* 1105 (2016) 87-95
- [28] L. Khedhiri, E. Jeanneau, F. Lefebvre, M. Rzaigui, C. Ben Nasr, *J. Chem. Sci.* 128 (2016) 1037-1045
- [29] T. Ben Chaabane, L. Smiri-Dogguy, *J. Chem. Cryst.* 29 (1999) 323-327
- [30] I. Ameur, S. Abid, S. S Al-Deyab, M. Rzaigui, *Acta Cryst.* (2013). E69, o1145–o1146.
- [31] B. Guillot, E. Enrique, L. Huder, C. Jelsch, *Acta Cryst.* A70 (2014) C279.
- [32] S. K. Wolff, D. J. Grimwood, J. J. McKinnon, M. J. Turner, D. Jayatilaka, and M. A. Spackman, *CRYSTAL-EXPLORER 3.0* (University of Western Australia, Perth, 2012).
- [33] D. Jayatilaka, D. J. Grimwood, A. Lee, et al. *TONTO, A System for Computational Chemistry* (The University of Western Australia, 2005).
- [34] C. Jelsch, S. Soudani, C. Ben Nasr, *IUCr J.* 2 (2015) 327 - 340.
- [35] R. G. Parr, R.G. Pearson, *J. Am. Chem. Soc.* 105 (1983) 7512–7516.
- [36] R. G. Pearson, *Proc. Natl. Acad. Sci. USA* 83 (1986) 8440–8441.

- [37] E. Lippmaa, M. Magi, A. Samoson, M. Tarmak, G. Engelhardt, A. R. Grimmer, *J. Am. Chem. Soc.*, 102 (1980) 4889-4893.
- [38] J.-Ha Choi, *Inorg. Chim. Acta* 362 (2009) 4231.
- [39] (a) L.J. Bellamy, *The Infrared Spectra of Complex Molecules*, 2nd ed., John Wiley & Sons, Inc, New -York, 1975; (b) R.M. Silverstein, F.X. Webster, D.J. Kiemle, *Spectrometric Identification of Organic Compound*, 7th ed., John Wiley & Sons Inc, New York, 2005.
- [40] C. Ben Nasr, M. Rzaigui, I. Sobrados, J. Sanz, *J. Alloys Compd.* 325 (2001) 102-108.

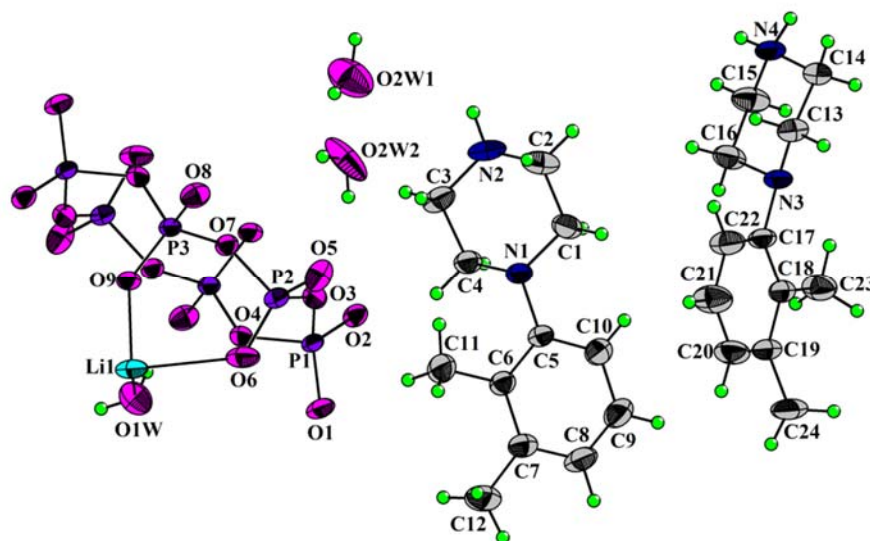


Fig. 1. ORTEP view of the $(C_{12}H_{19}N_2)_4(Li)_2(P_6O_{18})(H_2O)_4$ asymmetric unit. Displacement ellipsoids are drawn at the 40% probability level and H atoms are shown as small spheres of arbitrary radii.

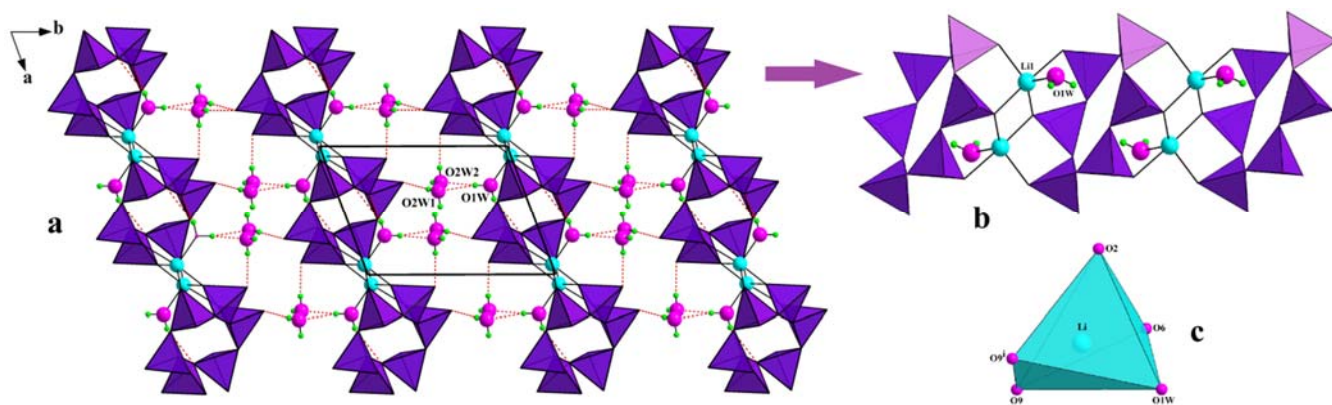


Fig. 2. (a) Projection along the *c*-axis, of an inorganic layer in the structure of $(C_{12}H_{19}N_2)_4(Li)_2(P_6O_{18})(H_2O)_4$. (b) hetero-anions of formula $[Li_2P_6O_{18} \cdot H_2O]^{4-}$ (c) Coordination of LiO_5 .

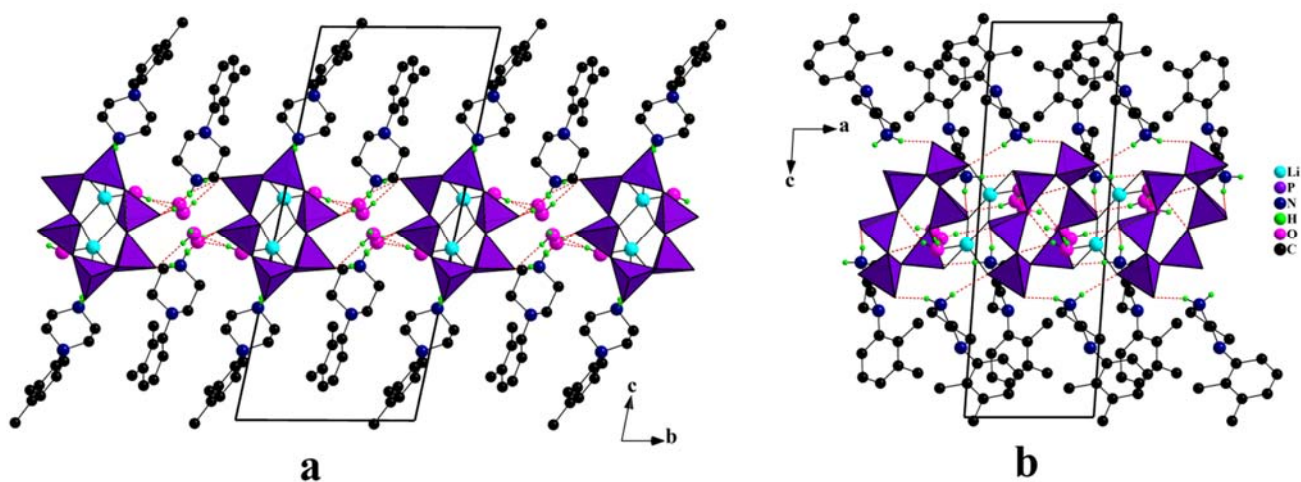


Fig. 3. Atomic arrangement of $(C_{12}H_{19}N_2)_4(Li)_2(P_6O_{18})(H_2O)_4$, projected along *a* and *b*-axis, showing the linkage between the different entities of the structure.

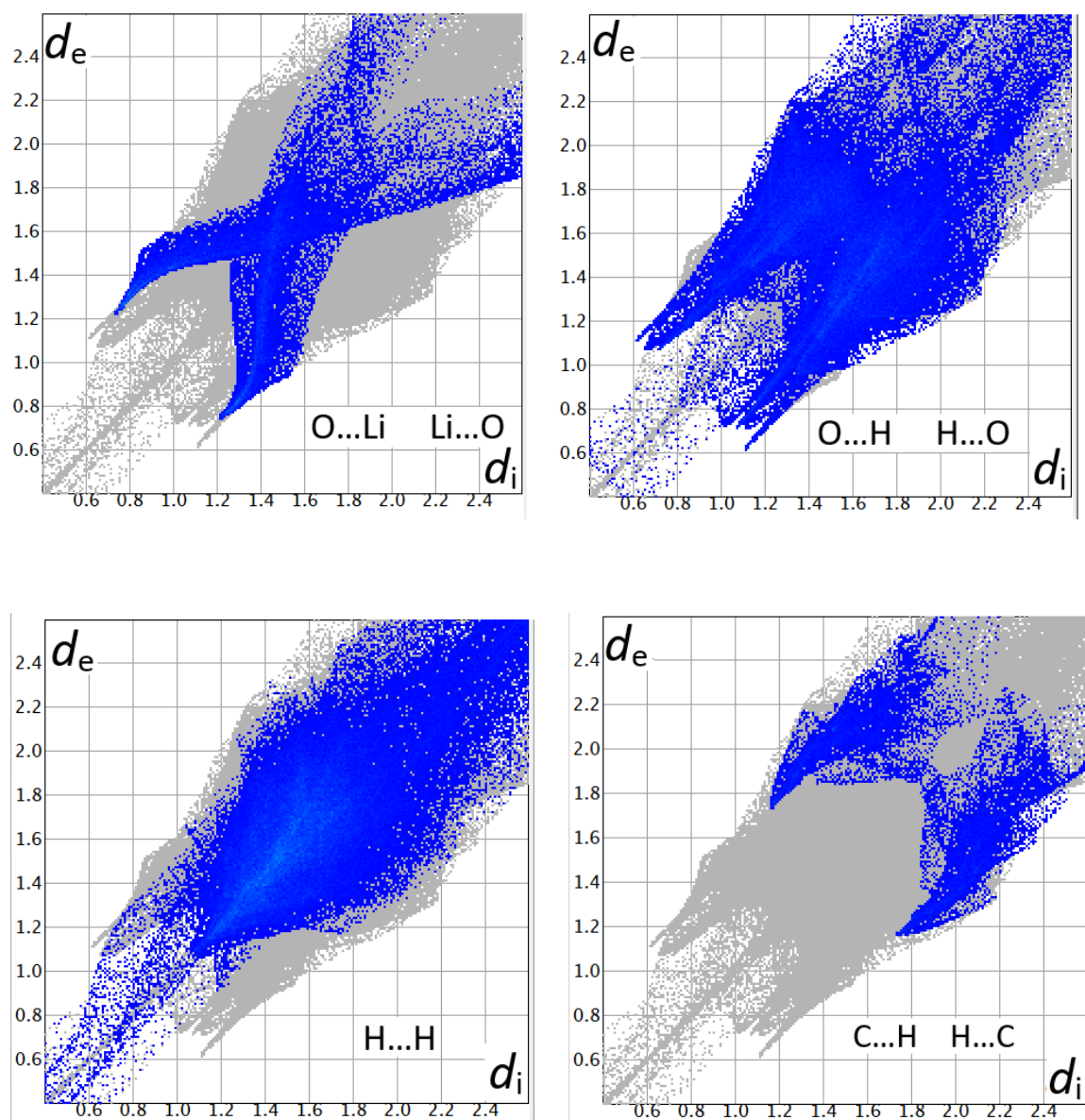


Fig. 4. 2D fingerprint plots of the title complex where areas of different intermolecular contacts are clearly shown; d_e and d_i are the distances to the nearest atom exterior and interior to the surface.

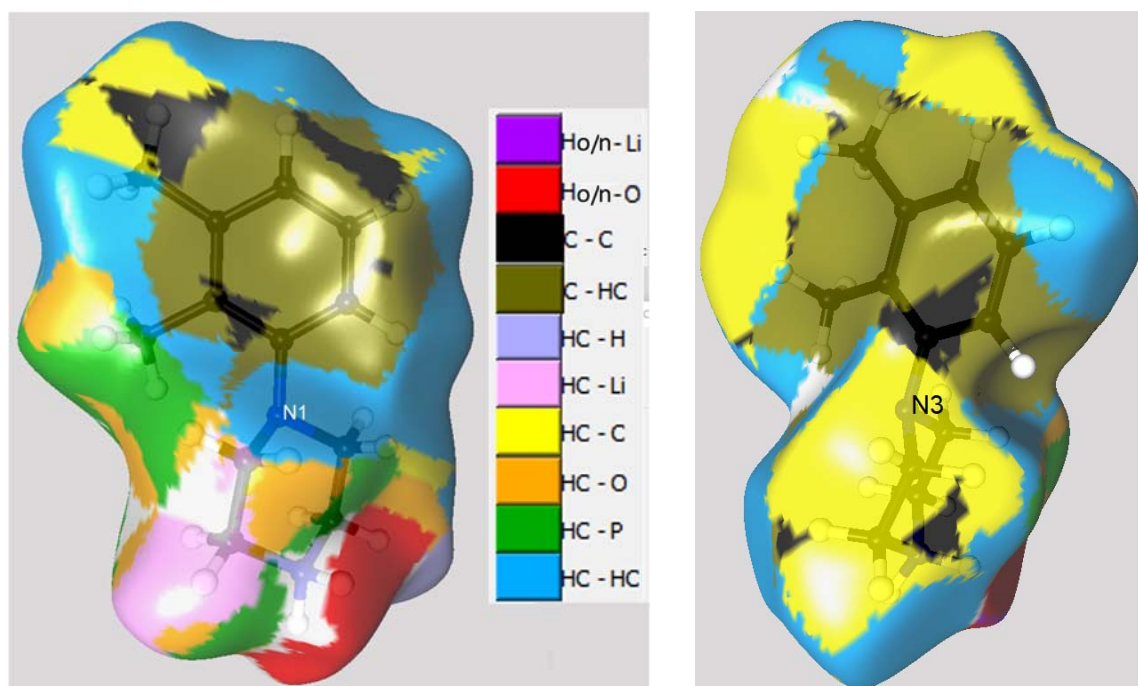


Fig. 5. View of the Hirshfeld surface around the two organic cations made with MoProViewer. Coloring of the surfaces is according to the local contact type.

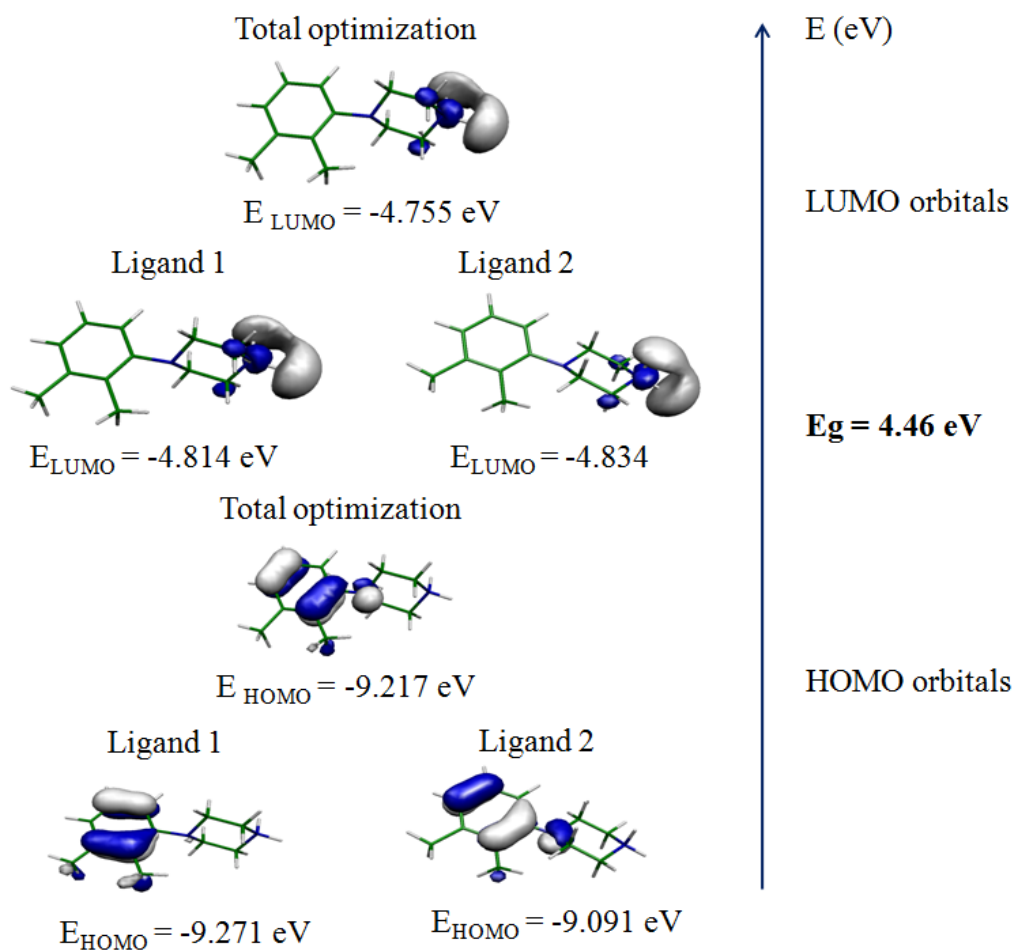


Fig. 6. Frontier molecular orbitals (HOMO and LUMO) for the organic molecule in $(C_{12}H_{19}N_2)_4(Li)_2(P_6O_{18})(H_2O)_4$.

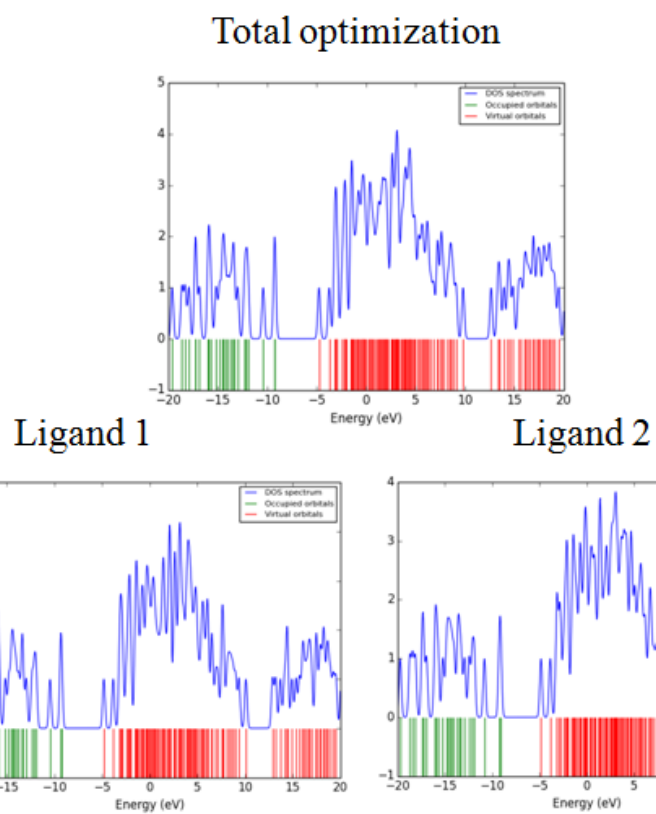


Fig. 7. Energy distribution of the different orbitals for the organic molecule in $(C_{12}H_{19}N_2)_4(Li)_2(P_6O_{18})(H_2O)_4$.

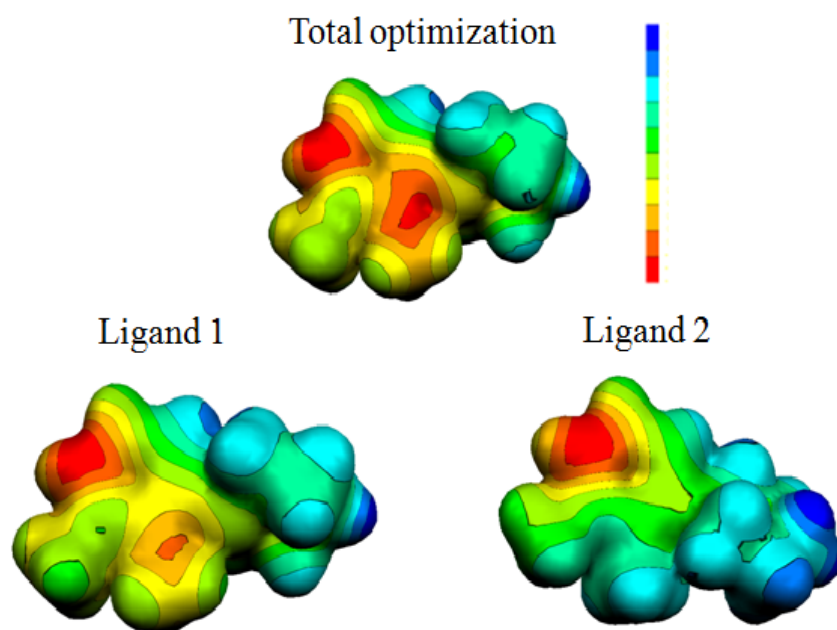


Fig. 8. Molecular Electrostatic Potential maps of the organic molecule in $(C_{12}H_{19}N_2)_4(Li)_2(P_6O_{18})(H_2O)_4$.

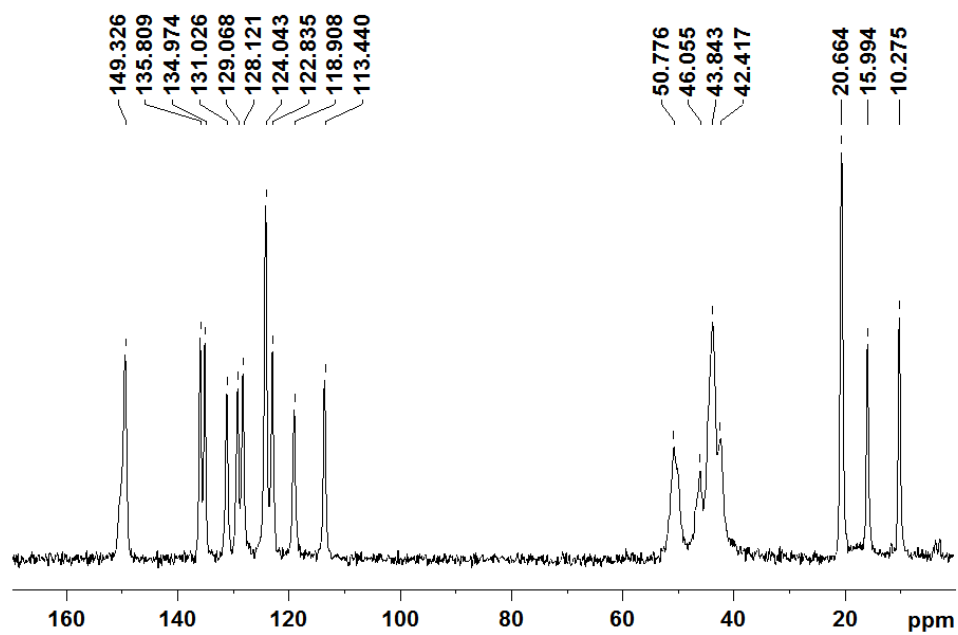


Fig. 9. ^{13}C CP-MAS NMR spectrum of $(C_{12}H_{19}N_2)_4(Li)_2(P_6O_{18})(H_2O)_4$ recorded at a contact time of 2 ms.

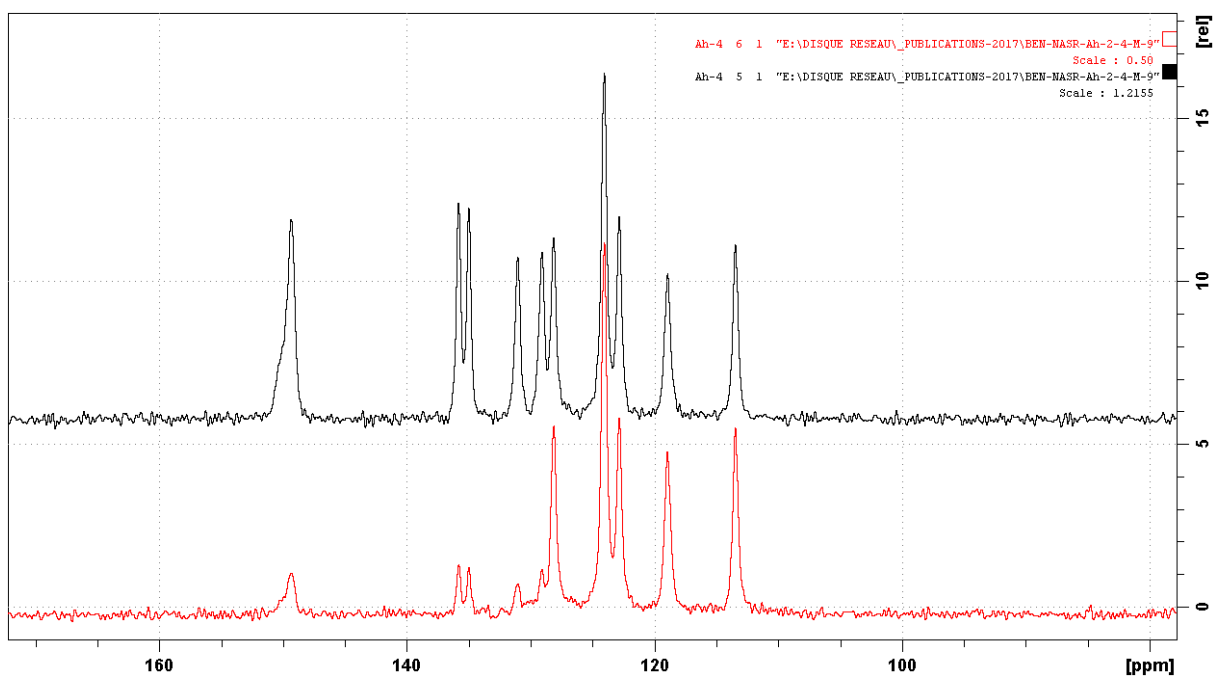


Fig. 10. Resonance zone of the aromatic carbons of the title compound ^{13}C CP-MAS NMR spectrum for a contact time of 2 ms at the top and 100 μs at the bottom.

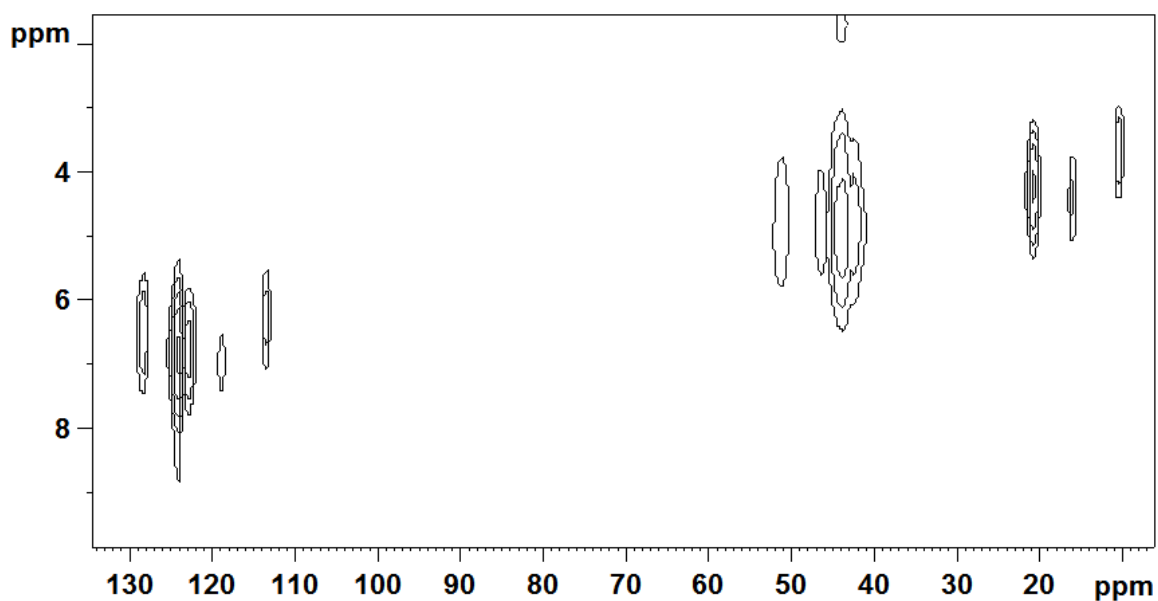


Fig. 11. Two-dimensional carbon-proton spectrum of $(\text{C}_{12}\text{H}_{19}\text{N}_2)_4(\text{Li})_2(\text{P}_6\text{O}_{18})(\text{H}_2\text{O})_4$.

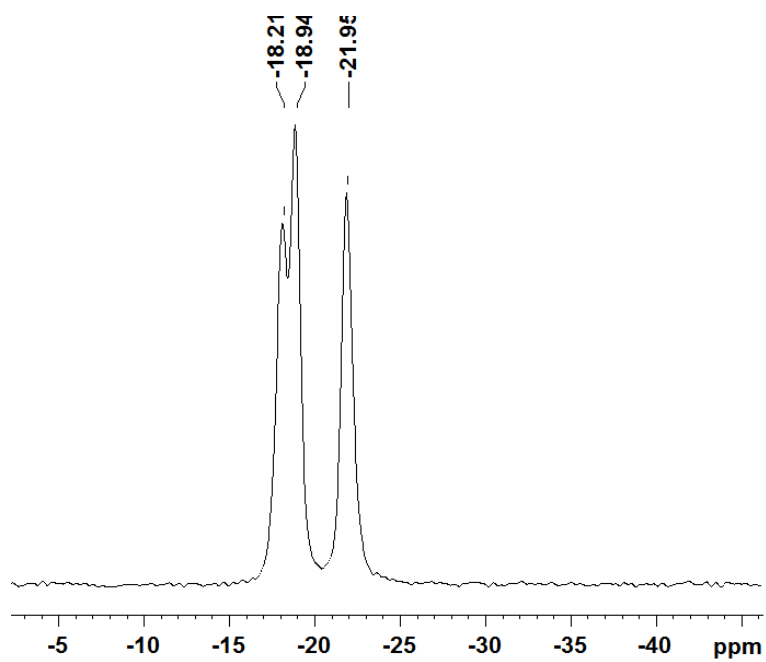


Fig. 12. ^{31}P MAS NMR spectrum of $(\text{C}_{12}\text{H}_{19}\text{N}_2)_4(\text{Li})_2(\text{P}_6\text{O}_{18})(\text{H}_2\text{O})_4$.

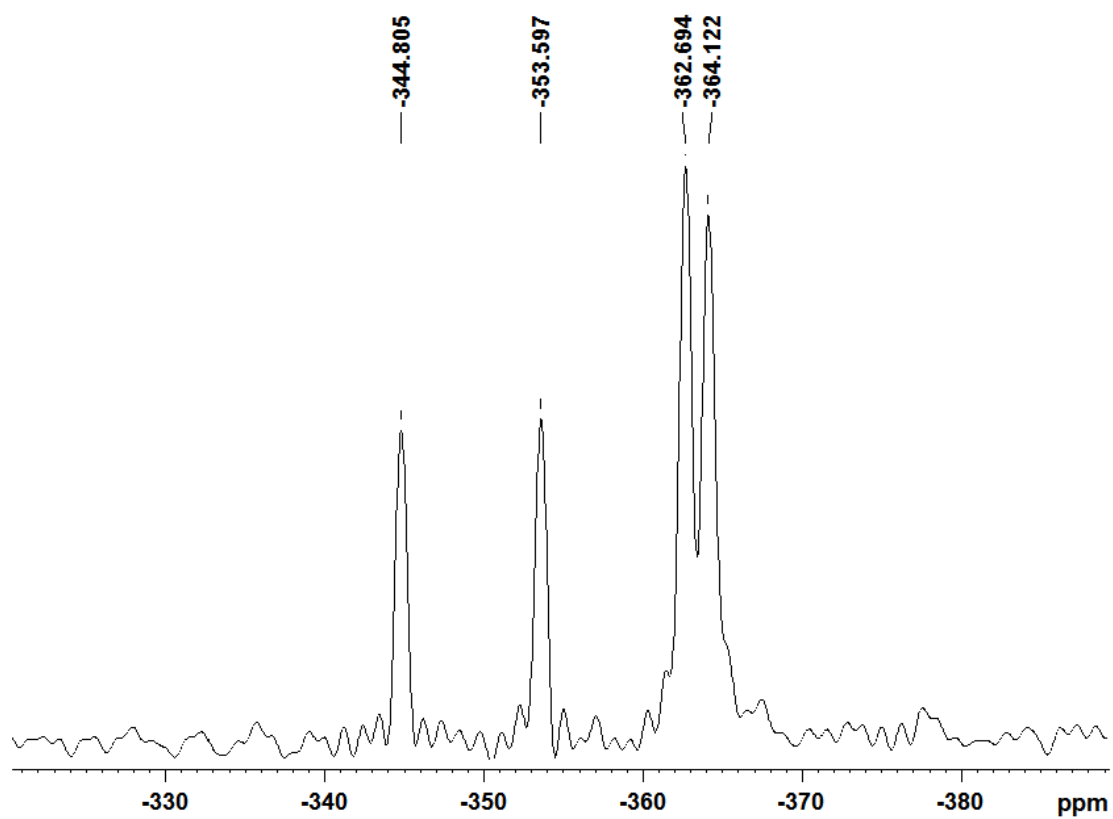


Fig. 13. ^{15}N CP-MAS NMR spectrum of $(\text{C}_{12}\text{H}_{19}\text{N}_2)_4(\text{Li})_2(\text{P}_6\text{O}_{18})(\text{H}_2\text{O})_4$.

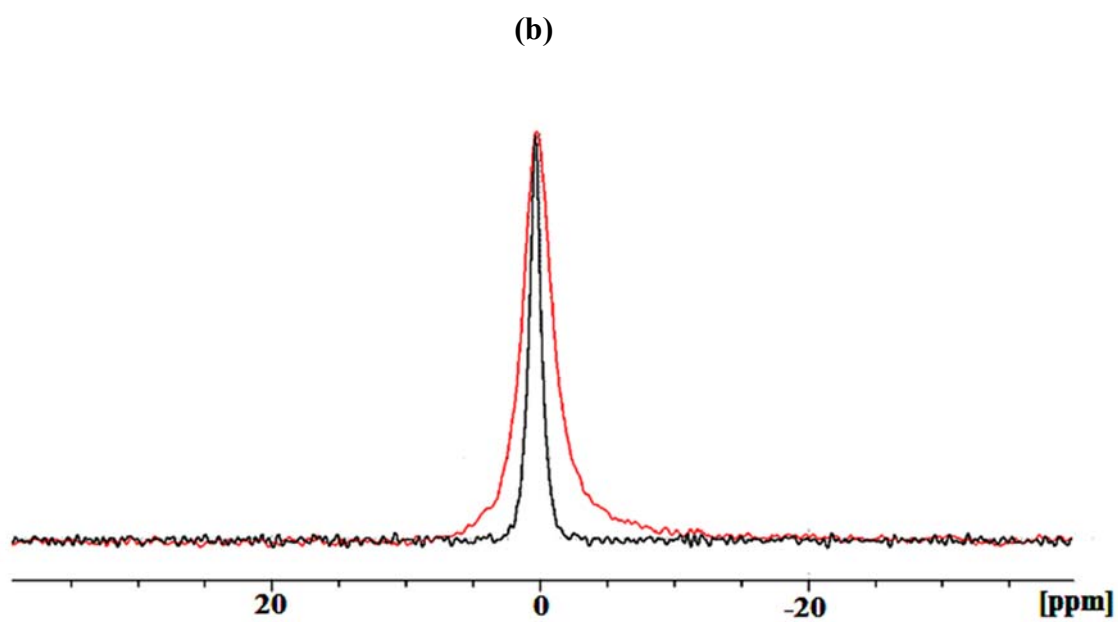
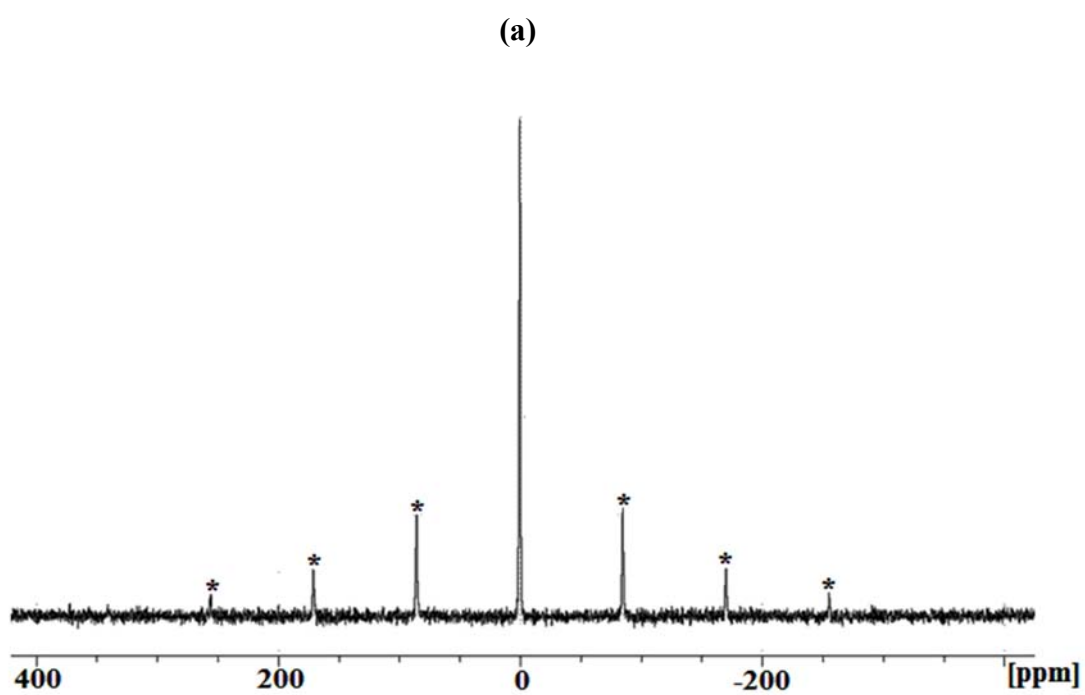


Fig. 14. ⁷Li MAS NMR spectrum of $(C_{12}H_{19}N_2)_4(Li)_2(P_6O_{18})(H_2O)_4$.

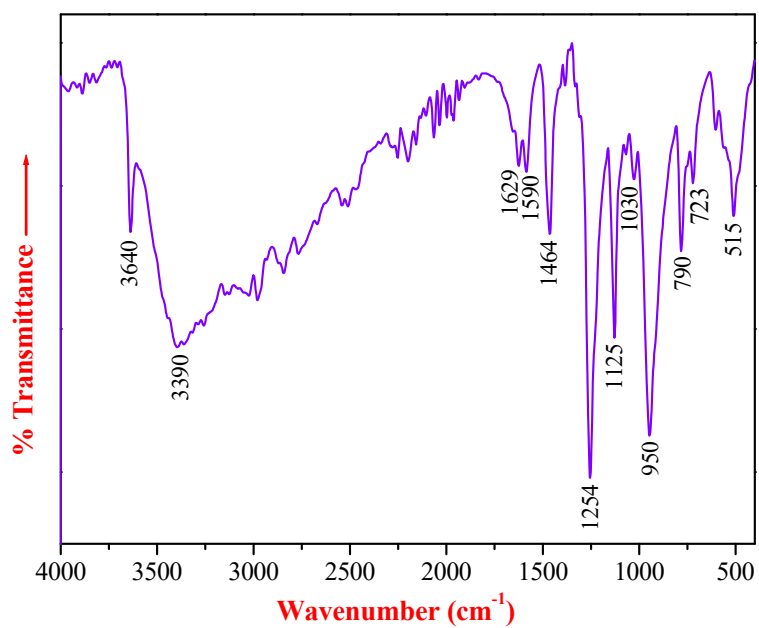


Fig. 15. Infrared spectrum of $(C_{12}H_{19}N_2)_4(Li)_2(P_6O_{18})(H_2O)_4$.

Table 1. Crystal data and experimental parameters used for the intensity data collection.
Procedure and final results of the structure determination.

Empirical formula	(C ₁₂ H ₁₉ N ₂) ₄ (Li) ₂ (P ₆ O ₁₈)(H ₂ O) ₄
Formula weight [g mol ⁻¹]	662.46
Crystal colour, habit	colourless, rod
Crystal temperature [K]	295
Crystal size [mm ³]	0.51x0.20x0.15
Radiation, wavelength [Å]	MoK α , 0.71073
Crystal system	triclinic
Space group	P-1
Unit-cell dimensions:	
<i>a</i> , <i>b</i> , <i>c</i> [Å]	7.398(2) ; 10.301(3) ; 21.699(6)
α , β , γ [°]	78.629(2) ; 89.825(2) ; 69.879(2)
Volume [Å ³]	1518.37(8)
<i>Z</i>	2
Density calc. [g cm ⁻³]	1.449
Reflections for cell determination	14328
θ range for cell determination [°]	2-27
Absorption coefficient μ [mm ⁻¹]	0.256
<i>F</i> (000)	700
θ -Range for data collection [°]	3.028 to 30.019
Limiting indices	-10 ≤ <i>h</i> ≤ 10, -14 ≤ <i>k</i> ≤ 14, -29 ≤ <i>l</i> ≤ 30
Reflections collected/unique	17246/6719 (<i>R</i> _{int} = 0.03)
Refinement method	Full-matrix least-squares on <i>F</i> ²
Data, restraints, parameters (<i>I</i> > 2 σ)	8405, 13, 432
Goodness-of-fit on <i>F</i> ²	1.052
<i>R</i> indices (all data, on <i>F</i> ²)	<i>R</i> = 0.0655, <i>wR</i> = 0.1735
$\Delta\rho$ (min, max) [e Å ⁻³]	-0.927, 0.970

Table 2. Interatomic distances (Å) and bond angles (°) in $(C_{12}H_{19}N_2)_4(Li)_2(P_6O_{18})(H_2O)_4$. P-O distances are on the diagonal, O-P-O angles and O-O distances are above and below the diagonal, respectively.

P(1)O₄ tetrahedron

P1	O1	O2	O3	O4
O1	1.476(1)	120.13(8)	110.53(8)	106.25(8)
O2	2.561(2)	1.479(1)	106.02(8)	110.26(8)
O3	2.535(2)	2.466(2)	1.607(1)	102.24(7)
O4	2.476(2)	2.542(2)	2.510(2)	1.617(1)

P(2)O₄ tetrahedron

P2	O3	O5	O6	O7
O3	1.601(1)	107.36(8)	112.15(8)	98.53(7)
O5	2.489(3)	1.487(2)	119.33(1)	108.58(8)
O6	2.552(1)	2.554(1)	1.474(2)	108.84(9)
O7	2.436(2)	2.519(3)	2.513(1)	1.614(1)

P(3)O₄ tetrahedron

P3	O4	O7	O8	O9
O4	1.601(1)	97.23(7)	108.58(8)	110.77(8)
O7	2.409(1)	1.610(1)	109.13(8)	110.37(8)
O8	2.502(4)	2.518(3)	1.478(1)	118.63(9)
O9	2.535(2)	2.537(1)	2.543(1)	1.479(1)

Li(1)O₄ pentahedron

Li1	O2	O6	O9	O9 ⁱ	O1W
O2	2.018(4)	91.95(15)	136.8(2)	92.07(2)	100.83(2)
O6	3.193(2)	2.406(4)	86.94(2)	170.60(2)	85.49(2)
O9	2.960(2)	3.019(2)	1.956(4)	84.32(2)	122.03(2)
O9 ⁱ	3.696(2)	4.485(4)	2.720(1)	2.093(4)	102.08(2)
O1W	3.095(4)	3.005(2)	3.461(3)	3.183(3)	2.001(4)

P1-P2	2.831(2)	P1-O3-P2	131.06(9)	P1-P2-P3	126.89(2)
P2-P3	2.920(3)	P1-O4-P3	130.56(9)	P1-P3-P2	137.05(2)
P3-P1	2.923(3)	P3-O7-P2	122.80(8)	P2-P1-P3	96.03(2)

Table 3. Interatomic PO distances (Å), OPO angles (°), tetrahedral distortion indexes ID(PO), ID(OPO) and ID(OO) of $(C_{12}H_{19}N_2)_4(Li)_2(P_6O_{18})(H_2O)_4$. δ is the distance between the phosphorus atom and the gravity center of PO_4 tetrahedron

Tetrahedron	P-O_m	ID(P-O)	(O-P-O)_m	ID(OPO)	O-O_m	ID(O-O)	δ(Å)
P(1)O₄	1.545	0.044	109.24	0.040	2.515	0.012	0.138
P(2)O₄	1.544	0.041	109.13	0.041	2.511	0.013	0.153
P(3)O₄	1.542	0.041	109.12	0.038	2.507	0.014	0.154

Table 4. Selected bond lengths (Å) and bond angles (°) in the organic groups of $(C_{12}H_{19}N_2)_4(Li)_2(P_6O_{18})(H_2O)_4$

[C₁₂H₁₉N₂(1)]⁺ group			
N1 - C5	1.432(2)	C5 - N1 - C1	115.43(2)
N1 - C1	1.464(3)	C5 - N1 - C4	112.92(2)
N1 - C4	1.473(3)	C1 - N1 - C4	108.56(2)
N2 - C2	1.481(3)	C2 - N2 - C3	111.14(2)
N2 - C3	1.485(3)	C17 - N3 - C13	115.12(2)
C1 - C2	1.507(3)	C17 - N3 - C16	111.21(2)
C3 - C4	1.511(3)	C13 - N3 - C16	109.61(2)
C5 - C10	1.388(3)	C14 - N4 - C15	111.18(2)
C5 - C6	1.409(3)	N1 - C1 - C2	110.3(2)
C6 - C7	1.408(3)	N2 - C2 - C1	110.66(2)
C6 - C11	1.497(3)	N2 - C3 - C4	109.4(2)
C7 - C8	1.389(3)	N1 - C4 - C3	110.73(2)
C7 - C12	1.514(3)	C10 - C5 - C6	119.39(2)
C8 - C9	1.368(4)	C10 - C5 - N1	121.86(2)
C9 - C10	1.383(3)	C6 - C5 - N1	118.75(2)
		C7 - C6 - C5	118.8(2)
		C7 - C6 - C11	119.6(2)
		C5 - C6 - C11	121.58(2)
		C8 - C7 - C6	120.0(2)
		C8 - C7 - C12	119.1(2)
		C6 - C7 - C12	120.9(2)
		C9 - C8 - C7	120.6(2)
		C8 - C9 - C10	120.1(2)
		C9 - C10 - C5	120.9(2)
[C₁₂H₁₉N₂(2)]⁺ group			
N3 - C17	1.437(2)	N3 - C13 - C14	109.23(2)
N3 - C13	1.459(2)	N4 - C14 - C13	110.12(2)
N3 - C16	1.464(3)	N4 - C15 - C16	110.3(2)
N4 - C14	1.478(3)	N3 - C16 - C15	110.6(2)
N4 - C15	1.485(3)	C22 - C17 - C18	120.47(2)
C13 - C14	1.505(3)	C22 - C17 - N3	121.28(2)
C15 - C16	1.507(3)	C18 - C17 - N3	118.24(2)
C17 - C22	1.396(3)	C19 - C18 - C17	118.6(2)
C17 - C18	1.406(3)	C19 - C18 - C23	120.4(2)
C18 - C19	1.402(3)	C17 - C18 - C23	121.0(2)
C18 - C23	1.498(3)	C20 - C19 - C18	119.5(2)
C19 - C20	1.389(4)	C20 - C19 - C24	119.6(2)
C19 - C24	1.507(3)	C18 - C19 - C24	120.9(2)
C20 - C21	1.369(4)	C21 - C20 - C19	121.2(2)
C21 - C22	1.374(3)	C20 - C21 - C22	120.5(2)
		C21 - C22 - C17	119.7(2)

Table 5. Structural parameters for hydrogen bonding interactions (\AA , $^\circ$) in $(\text{C}_{12}\text{H}_{19}\text{N}_2)_4(\text{Li})_2(\text{P}_6\text{O}_{18})(\text{H}_2\text{O})_4$

<i>D-H...A</i>	<i>D-H</i>	<i>H...A</i>	<i>D...A</i>	<i>D-H...A</i>
N2 - H...O5	0.87	1.92	2.787(3)	174
N2 - H...O8 ⁱ	0.87	2.04	2.811(3)	147
N4 - H...O2 ⁱⁱ	0.87	2.15	3.008(3)	169
N4 - H...O1 ⁱⁱⁱ	0.96	1.87	2.792(3)	163
O1W - H...O4 ^{iv}	0.84	2.43	3.085(2)	136
O1W - H...O7 ^v	0.84	2.44	3.232(2)	157
O1W - H...O2W1 ^v	0.86	2.02	2.876(11)	171
O1W - H...O2W2 ^v	0.86	1.85	2.689(8)	165
O2W1 - H...O5 ⁱⁱ	0.85	2.14	2.993(8)	177
O2W2 - H...O8 ^{vi}	0.84	1.86	2.702(8)	176
C4 - H...O3	0.97	2.62	3.386(3)	135
C4 - H...O6 ^{vii}	0.97	2.65	3.456(3)	140

Equivalent positions: *i*) 1-x,1-y,1-z; *ii*) x,y-1,z ; *iii*) x-1,y-1,z; *iv*) 1-x,2-y,1-z;
v) x,y+1,z; *vi*) 2-x,1-y,1-z; *vii*) x-1,y,z

Table 6. Chemical content (%) on the Hirshfeld surface, C_{xy} (%) contact types and their enrichment ratios E_{xy} . N chemical species, whose content is only 0.5% on the surface, was omitted. The major interaction types and the most enriched are in bold. The hydrogen atoms (Ho/n and, Hc) bound to O/N and C are distinguished, as their interaction properties are different.

atom	Li	Ho/n	O	P	N	Hc	C
%surface	7.4	17.0	20.9	5.9	0.5	38.0	10.4
Li	0.3						
Ho/n	1.3	3.0				C_{xy}	
O	10.8	19.0	0.4				
P	1.3	3.4	0.1	0.0			
Hc	0.8	4.3	9.6	6.7	0.5	19.8	
C	0.0	0.0	1.2	0.5	0.1	14.6	2.2
Li	0.70						
Ho/n	0.54	1.04				E_{xy}	
O	3.2	2.7	0.10				
P	1.31	1.66	0.02	0.00			
Hc	0.14	0.33	0.60	1.45	1.52	1.38	
C	0.01	0.00	0.28	0.38	0.94	1.84	2.0

Table 7. Comparison of calculated and experimental chemical shift values (ppm) of the carbon and nitrogen atoms in the title cyclohexaphosphate.

Atoms	Full optimisation	Ligand 1	Ligand 2	Experiment
C1	140.8	138.9	137.9	149.3
C2	128.2	126.6	124.5	131.0
C3	138.7	136.4	137.2	135.8/135.0
C4	126.5	123.0	121.7	129.1/128.1
C5	123.8	119.4	120.2	124.0/122.0
C6	112.2	108.1	105.2	113.1/118.9
C7	23.2	23.3	23.2	20.7
C8	14.8	13.9	16.0	10.3/16.0
C9	52.9	53.2	48.6	Peak at 50.8 for the two signals calculated at 52.2 et 53.2
C10	50.4	46.2	45.5	
C11	50.0	49.6	52.2	
C12	51.3	45.8	45.8	
N1	200.1	200.0	190.8	-344.8 & - 353.6
N2	205.1	206.0	206.2	-362.7 & - 364.1