



HAL
open science

Estimating occupancy using interactive learning with a sensor environment: real-time experiments

Manar Amayri, Stéphane Ploix, Nizar Bouguila, Frédéric Wurtz

► To cite this version:

Manar Amayri, Stéphane Ploix, Nizar Bouguila, Frédéric Wurtz. Estimating occupancy using interactive learning with a sensor environment: real-time experiments. *IEEE Access*, 2019, 7, pp.53932 - 53944. 10.1109/ACCESS.2019.2911921 . hal-02111585

HAL Id: hal-02111585

<https://hal.science/hal-02111585v1>

Submitted on 9 Apr 2021

HAL is a multi-disciplinary open access archive for the deposit and dissemination of scientific research documents, whether they are published or not. The documents may come from teaching and research institutions in France or abroad, or from public or private research centers.

L'archive ouverte pluridisciplinaire **HAL**, est destinée au dépôt et à la diffusion de documents scientifiques de niveau recherche, publiés ou non, émanant des établissements d'enseignement et de recherche français ou étrangers, des laboratoires publics ou privés.

Received March 14, 2019, accepted April 7, 2019, date of publication April 24, 2019, date of current version May 3, 2019.

Digital Object Identifier 10.1109/ACCESS.2019.2911921

Estimating Occupancy Using Interactive Learning With a Sensor Environment: Real-Time Experiments

MANAR AMAYRI¹, STEPHANE PLOIX¹, NIZAR BOUGUILA², (Senior Member, IEEE), AND FREDERIC WURTZ³

¹G-SCOP Laboratory, Grenoble Institute of Technology, 38031 Grenoble, France

²Concordia Institute for Information Systems Engineering (CIISE), Concordia University, Montreal, QC H3G 1M8, Canada

³G2ELAB, Grenoble Institute of Technology, Grenoble, France

Corresponding author: Manar Amayri (eng.amayri@gmail.com)

This work was supported by the French National Research Agency in the Framework of the Investissements d'avenir Program, through ECO-SESA and COMEPOS Projects, under Grant ANR-15-IDEX-02.

ABSTRACT Interactive learning plays a key role in extending the occupant behavior implementation toward smart buildings. Efficient feedbacks can be obtained from the end user by involving occupants and increasing their awareness about energy systems. Working in highly energy-efficient buildings can be a great opportunity, but users need to feel empowered. This means making them aware of the building features and allowing them to manage some of the appliances. In this way, disorientation or annoyance is avoided, and people feel more in control. This paper proposes a solution to interact with occupants to estimate the number of occupants. A novel way of supervised learning is analyzed to estimate the occupancy in a room where actual occupancy is interactively requested to occupants when it is the most relevant to limit the number of interactions. Occupancy estimation algorithm relies on machine learning; it uses information gathered from occupants with the measurements collected from common sensors, for instance, motion detection, power consumption, and CO₂ concentration. Two different classifiers are investigated for occupancy estimation with interactions: a decision tree C4.5 and a parameterized rule-based classifier. In this paper, the question of when interacting with occupants is investigated. This approach avoids the usage of a camera to determine the actual occupancy. A complete real-time interaction environment has been developed and is used to estimate the occupancy in an office case study. The graphical user interface has been designed to carry out a real-time experiment.

INDEX TERMS Activities recognition, building performance, data mining, human behavior, machine learning, office buildings.

I. INTRODUCTION

Smart Building services are an important provider of technology systems. Services focus on constructing, operating and maintaining buildings in the most effective and cost-efficient manner. At the most fundamental level, smart buildings deliver useful services that make occupants comfortable and productive (by providing them proper illumination, thermal comfort, air quality, physical security, sanitation, and many more), at the lowest cost and environmental impact over the building life-cycle. Reaching this vision requires adding intelligence from the beginning of the design phase

The associate editor coordinating the review of this manuscript and approving it for publication was Mehedi Masud.

throughout the end of the building's life. Smart buildings use information technology during operation to connect a variety of subsystems, which typically operate independently so that these systems can share information to optimize total building performance. Smart buildings are connected and responsive to the smart power grid, and they interact with building operators and occupants to empower them with new levels of visibility and actionable information.

Figure 1 shows the state of the building system which includes: a- physics with the buildings possible devices and envelopes, b- human part related to building occupants.

In order to define the state of building, non-measured values should be known in both parts: physical and human (i.e. occupancy and activities). Measuring these variables

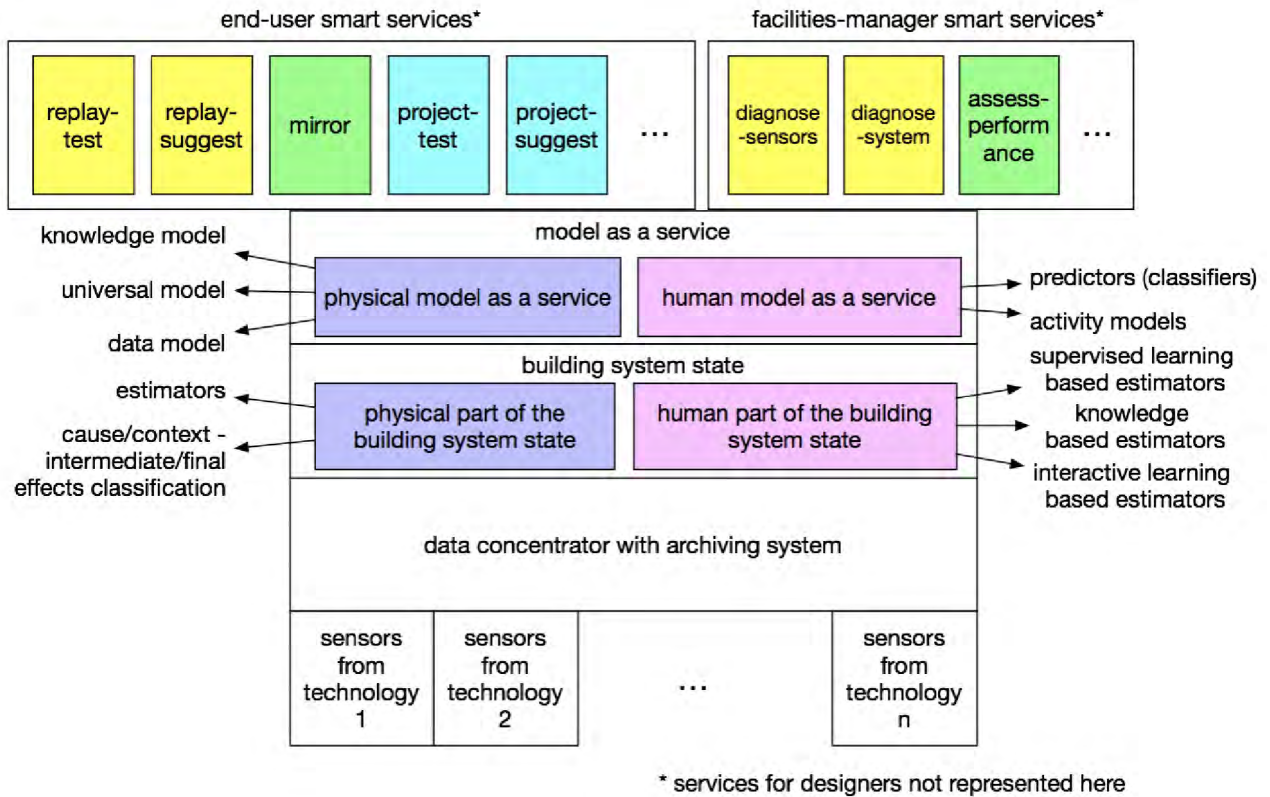


FIGURE 1. Layers of energy management system.

will open the gate to different applications in the design and operating phases of smart buildings (table 1).

In this paper, an interactive technique has been investigated, in order to solve the problem of getting the required labels used in supervised method. In practical applications the limitation arises due to the occupant’s privacy issues. Accurately estimating occupancy with a set of sensors and self-labeling by interaction with occupants are the main goals of this work.

The rest of this paper is organized as follows. Section 2 presents a review of the research about occupancy estimation. Section 3 investigates the proposed methodology of interactive learning that interacts with occupants to collect the actual occupancy. Section 4 discusses the decision tree classifier. Section 5 focuses on parameterized classifier for interactive learning. Section 6 compares the two classifiers with interactive learning in an office context, and section 7 points out an implementation and experimentation with the real-time interactive learning application and section 8 concludes the paper.

II. STATE OF THE ART

Recent advances in smart building methodologies have focused on human occupancy in order to increase the performance of buildings. Several approaches have been proposed by researchers in the field for activity recognition and

occupancy analysis. The learning generally involves creating a probabilistic or statistical model trained via large training or learning dataset. The aim of the model is to learn and recognize patterns that differentiate classes in the training data and apply this knowledge for the prediction/classification of test data in order to solve the problem without necessarily providing it with domain-specific knowledge. Since the problem emanates from pattern recognition, or data analysis such methods are termed data-driven. Reference [6] identifies such data-driven approaches and classified them into (a) a generative modeling [7], (b) discriminate modeling [8], and (c) heuristic-based modeling [9]. Recently, some hybrid generative discriminative approaches have been proposed, also (see for instance, [10]).

Existing methods for occupancy estimation depend on different sources of data. Reference [11] proposed an occupancy detection using sensing by proxy, where the inference depends on proxy measurements such as CO2 concentration, and indoor temperature. In [12] the authors investigated a solution for occupancy and activity prediction (eating, sleeping, and taking medicine) by imitation learning and reduce it to a simple regression problem. Moreover, data coming from sensors have been used in this work (i.e. location sensors, window and position). Numerous studies in smart homes have used sound processing for activities recognition such as [13] which used Gaussian Mixtures Model (GMM) and

TABLE 1. New service requiring occupancy/activity.

Application	Occupancy or activities	Mean	Objective
1-Performance guaranty and simulation during the design phase [1]	occupancy and activities	fill conditional probability tables of Bayesian networks consisting of nodes concerned with occupants	design occupants behaviour
2-Simulating building behaviour [2]	occupancy and activities	calculate heat gains from bodies for estimating internal thermal gain	parameter estimation
3-Replay/determine best solution for past or future [3]	occupancy	use occupancy and physical models for anticipated plan	energy and comfort management by having the best solution for the future
4-Explanation [4]	occupancy	use model including gains due to metabolism	help occupants to understand their energy management strategies
5-Determine best solution without model	occupancy	cluster historical data including occupancy	occupants can be assisted to understand the impact of actions by experimenting with different actions and monitoring how they are affecting their habitat
6-Diagnosis and failure detection [5]	occupancy	use physical model	increase the comfort and reliability of the building.
7-Key performance indicator	presence, occupancy and activities	calculate indicator depending on presence or indicators related to some activities	summary of some information that occupants would not be able to understand separately

Support Vector Machine (SVM), in order to classify sound data sequences in order to be used in elderly people monitoring systems. While, in [14] the researcher has proposed an algorithm for audio-based occupancy analysis, which depends on GMM and Hidden Markov Model (HMM). Moreover, [15] proposed an action recognition approach based on Convolutional Neural Networks (CNNs) and Recurrent Neural Networks (RNNs). This model is suitable in case of using wearable sensors. Besides, it does not require expert knowledge to design the required features, but still suffers from the drawback that deep learning algorithms need a large quantity of training data.

Many studies depend on classification from vision-based data, they use image processing and computer vision techniques. According to [16], detecting humans using images is a hard task because of their variable appearance and the many variables involved in. The first need is a robust feature set that allows efficient human detection, even in cluttered backgrounds under difficult illumination conditions. There have been several other studies of presence/absence detection. For instance [17], describes a technique to detect the presence of computer users. It relies also on ultrasonic sonars using hardware already present in laptops. It leverages the fact that human bodies have a different effect on sound waves than air and other objects.

Interactive learning is proposed to develop smart devices for buildings. Efficient feedbacks can be obtained from the end user by involving occupants and increasing their

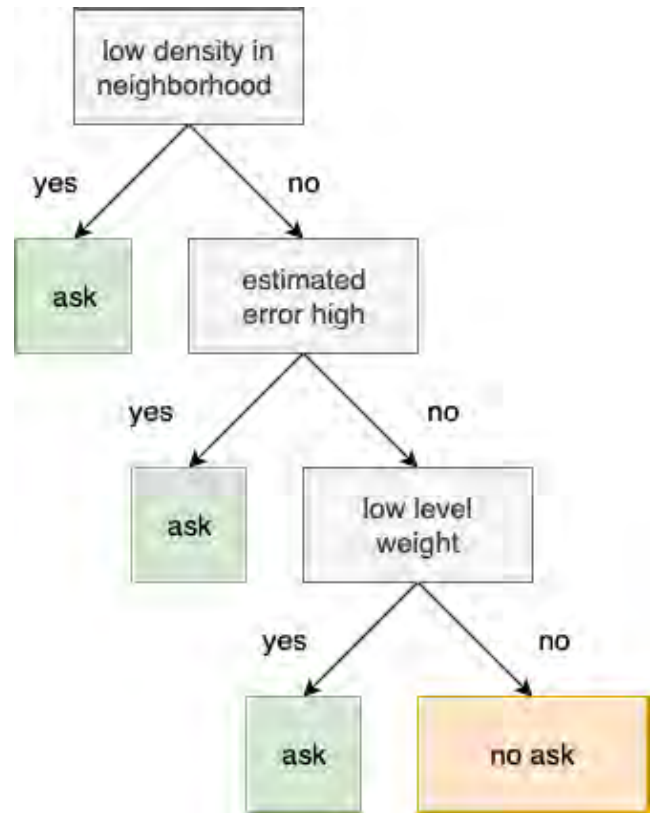


FIGURE 2. Asking problem.

TABLE 2. Number of asks.

Day	1	2	3	4	5	6	7	8	9	10
Number of asks	9	3	1	0	0	0	0	1	0	0

awareness about energy systems [18]. Working in highly energy-efficient buildings can be a great opportunity, but users need to feel empowered. This means making them aware of the building features and allowing them to manage some of the appliances. In this way, disorientation or annoyance is avoided and people feel more in control. Reference [19] has indicated an improved user experience results when users regulate their environment. In addition, the concept of interactive learning allows to evaluate the quality of the database. One major problem in term of communication with the occupant is the availability of the user which can be different from one situation to another, occupancy recognition approaches can be a practical solution to solve the problem of occupant availability (Amayri et al., 2019).

III. THE PRINCIPLE OF INTERACTIVE LEARNING

In this section, a new approach for occupancy estimation is proposed: the interactive learning methodology.

Interactive learning is a process involving an exchange of information with the users in order to collect some important data according to the problem context. In supervised learning methods, which are widely used in a lot of applications, the problem of the required target arises in the determination of the number of occupants i.e. the labeling issue is usually

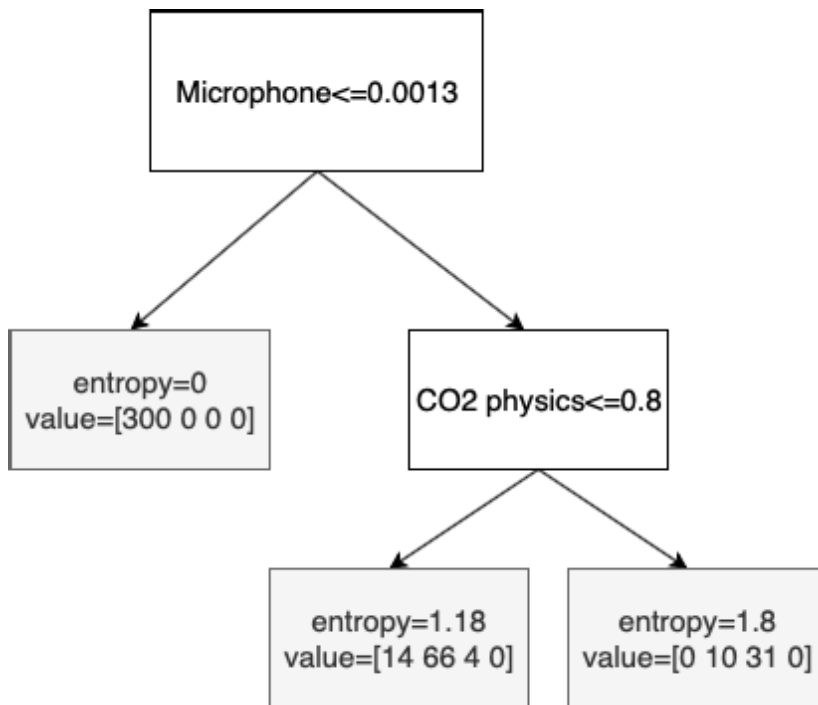


FIGURE 3. Decision tree.

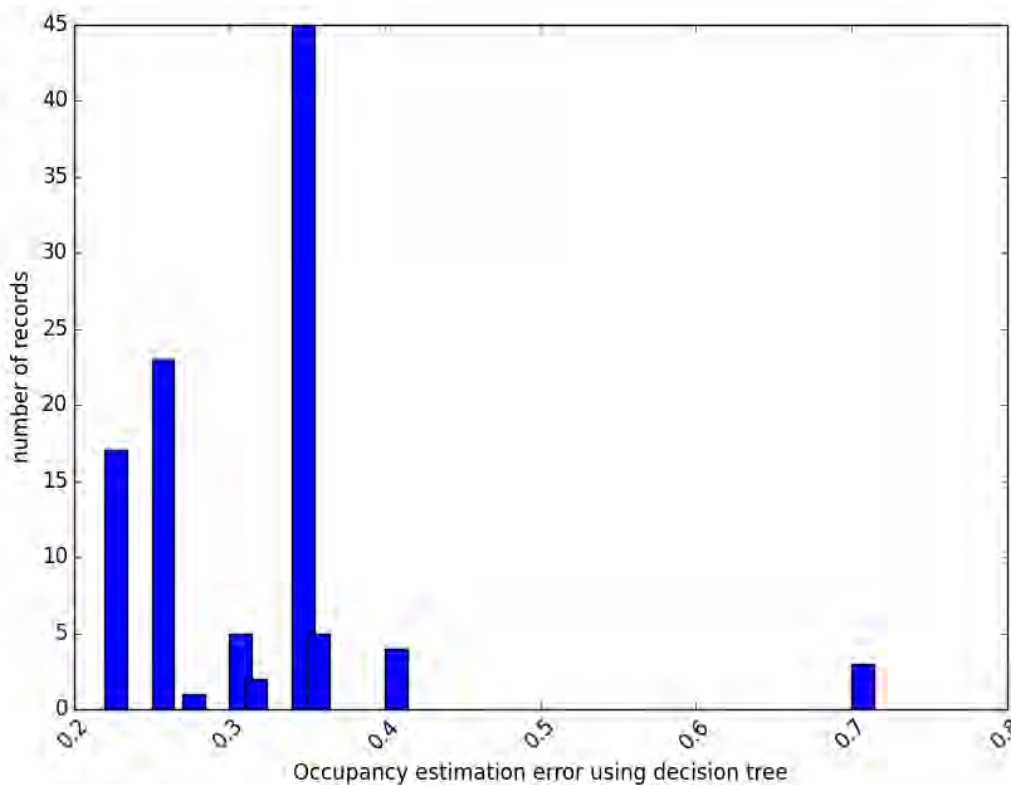


FIGURE 4. Distribution of decision tree error with 14 asks $\epsilon = 0.5$, error ratio is $E_r = 1.5$, and the weight of each class $C_w = 2$. 14 asks are not enough to build an acceptable decision tree estimator, with an average error equal to 0.32. The estimation error lies between 0.22 to 0.7 which is decreased by collecting more number of answers for building the estimator model. The interactive learning process has been performed 100 times to show the distribution of the error because of the randomness.

tackled using video cameras. Using camera is generally not acceptable in many places to respect the privacy of occupants. Interactive learning is an extension of supervised learning that

determines the occupancy by collecting the required labeling from the occupants themselves. The problem statement of occupancy estimation has been explained in [20].

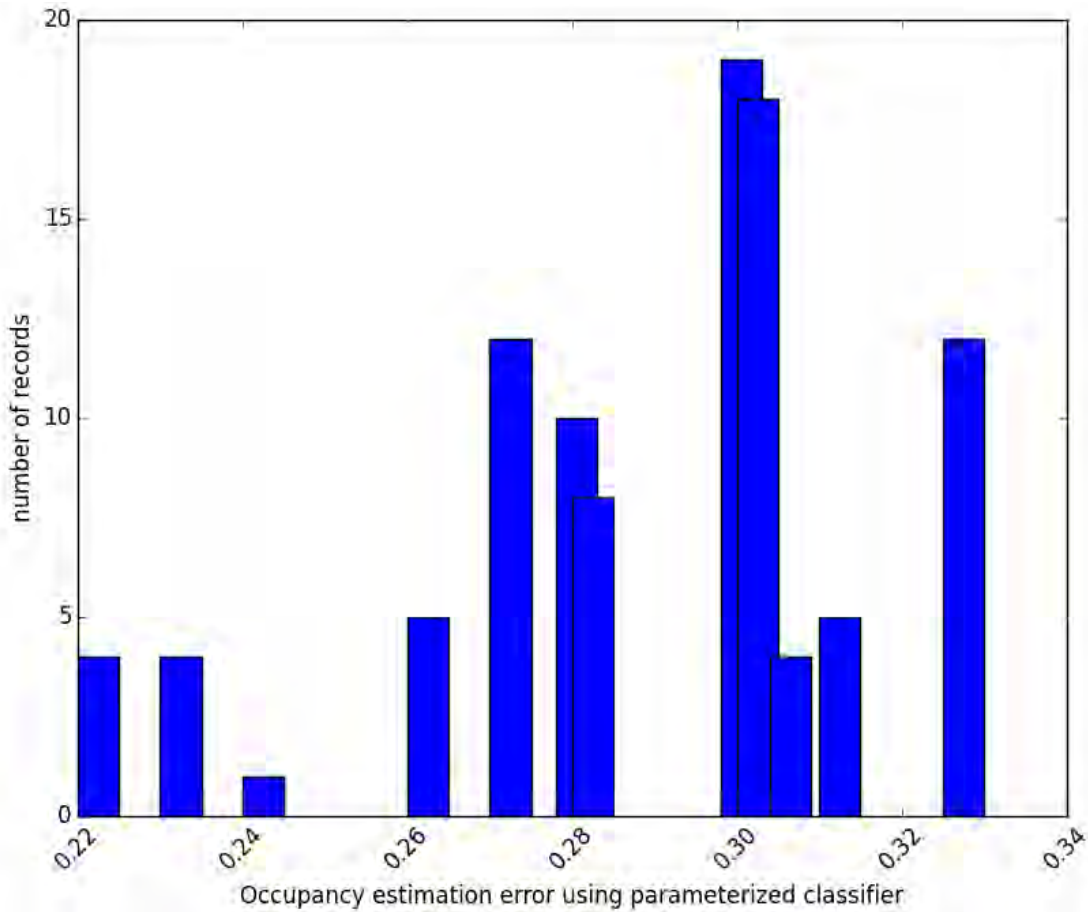


FIGURE 5. Distribution of parameterized classifier error with 14 asks $\epsilon = 0.5$, the error ratio is $E_r = 1.5$, and the weight of each class $C_w = 2$, the parameterized classifier is giving better results than the whole decision tree, with an average error equal to 0.288. The estimation error has been changed a slightly between 0.22 to 0.33 because of the optimization process. The interactive learning process has been performed 100 times to show the distribution of the error because of the randomness.

Three rules are considered to determine whether an interaction space (*ask*) is potentially useful or not:

- 1) The density of the neighborhood: It is the number of existing records in the neighborhood of a potential *ask*. The neighborhood is defined by the infinite distance with radius equal to one, because of the normalization. The record is a vector of features obtained which values are obtained from the sensors. The neighborhood can be modified according to $\epsilon \in [0, 1]$
- 2) The classifier estimation error in the neighborhood of the potential *ask* leads to the concept of neighborhood quality. If the classifier estimation error is too high for a record, this record is removed from the neighborhood because of the poor quality. $E_r \in [1, 2]$ typically, is an error ratio which can be adjusted. However, a value smaller than 1 means a record is considered as good. Conversely, if E_r is big, equal to 2 for instance, it means you accept error twice as big as the average error. Theoretically E_r belongs to $[0, \infty)$ but it is limited in our experiments to 2.
- 3) The minimum class weight: i.e. the minimum number of records for each class. The minimum class weight,

$\text{weight}(\text{class}x) < C_w$ which can be adjusted according to the problem.

All the potential *asks* that satisfy the above three rules are asked to the occupants in order to possibly become an additional record. The three previous rules have been checked with each new record according to the flowchart, in figure 2.

As a first validation, occupant reaction has to be taken into account as a response probability whether the occupants answer or not. In a given context, the number of asks relies on the classifier used for estimation occupancy.

Decision tree and a parameterized classifier together with the proposed *ask* mechanism are presented in the next two sections.

IV. DECISION TREE WITH INTERACTIVE LEARNING

In order to evaluate the interactive approach, we deploy decision trees which is one of the most valuable supervised learning methods for occupancy estimation. According to our study in [20], decision trees gave human-readable results which can be analyzed and easily adapted for building managers. In addition, it is possible to limit the depth of the tree in order to simplify the analysis of the (if - then) rules,

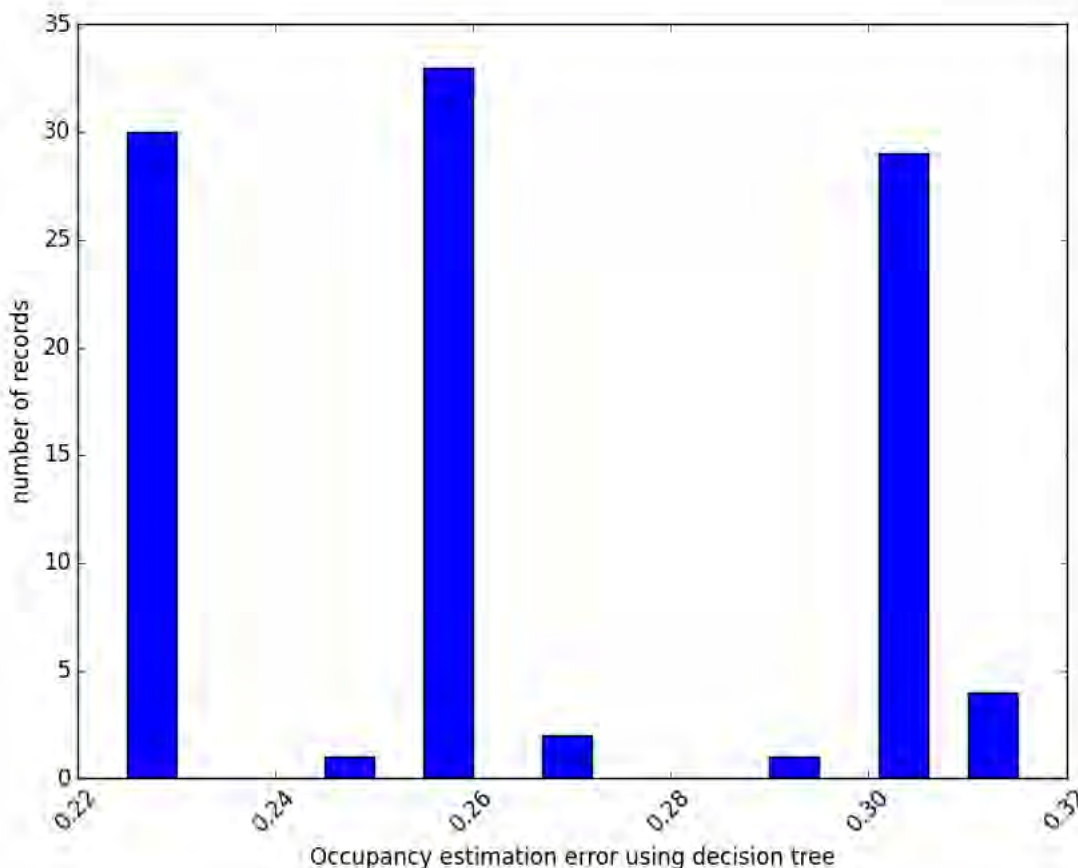


FIGURE 6. Distribution of decision tree error with 50 asks $\epsilon = 0.5$, error ratio is $E_r = 1.5$, and the weight of each class $C_w = 11$. 50 asks are enough to build an acceptable decision tree estimator, with an average error equal to 0.24 person which is better than the case of 14 asks. The estimation error has been changed between 0.22 to 0.8 which is decreased by collecting the required answers for building the estimator model. The interactive learning process has been performed 100 times to show the distribution of the error because of the randomness.

enable users to quickly extract useful information about occupancy estimation. Decision tree needs a training period (labeling) which is usually obtained from video cameras. Due to privacy issues, installing video cameras is not acceptable in many contexts. Using interactive learning solves this problem by sending questions and collecting answers from the end users. Figure 3 shows an example of a decision tree.

V. PARAMETERIZED CLASSIFIER WITH INTERACTIVE LEARNING

The parameterized classifier uses a predetermined classifier structure with parameters to be adjusted according to the incoming records. Tuning problem can be solved by adjusting the classifier parameters (node thresholds of the decision tree) in the final structure according to each updated recordset and how much it's different from the previous one. An objective function is determined to minimize the distance between actual (coming from an ask) and estimated (coming from the classifier) number of occupants in the room [20]. An example of the classifier parameters using if-then rules to read the decision tree is displayed in figure 3.

if microphone is less than 0.0013 **then**
 ≈ 0 person

else if microphone is more than 0.0013 and CO2 physical model is less than 0.8 **then**
 ≈ 1 person
else if microphone is more than 0.0013 and CO2 physical model is more than 0.8 **then**
 ≈ 2 persons
end if

VI. CASE STUDY FOR ONE ZONE OFFICE

A one zone office is used for interactive learning experiments. This office is equipped with 30 sensors. The data cover 11 days from 04-May-2015 to 14-May-2015. During these days a simulation has been done to evaluate the proposed approach. At this step, Human Machine Interface (HMI) interaction with end users in the office is simulated, while the answers of asks are coming from the data label obtained from video cameras. The effective replies of the occupants are also modeled using a random process with a reply probability equal to 50% i.e. only half of the asks get replies. Decision tree and parameterized classifier have been applied. The interactive learning process has been performed 100 times (random replies to the asks) to show the distribution of the error for both methods (see figure 4).

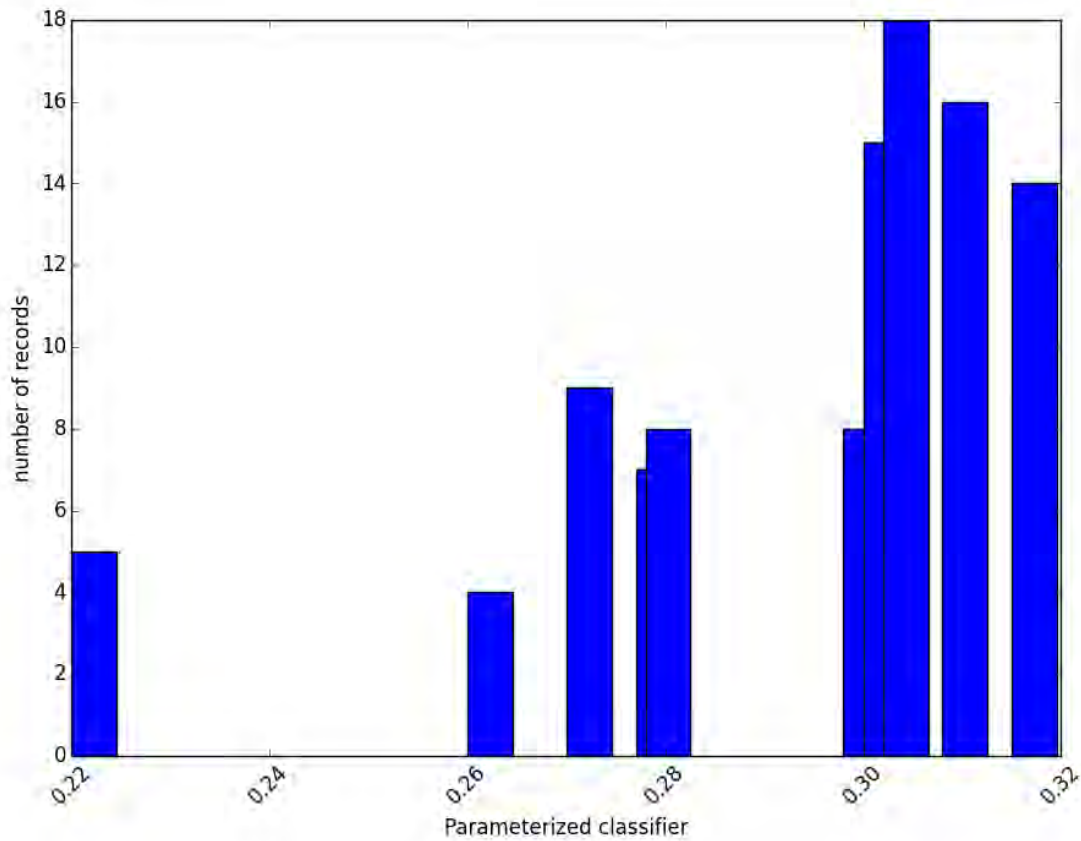


FIGURE 7. Distribution of parameterized classifier error with 50 asks $\epsilon = 0.5$, the error ratio is $E_r = 1.5$, and the weight of each class $C_w = 11$, decision tree gives better results than the parameterized classifier, with an average error equal to 0.27 and 0.24.

Table 2 illustrates how the 14 ask are distributed along the days with parameterized estimator. Asking process with decision tree leads to almost the same results depending on the run that contains randomness because of the ask replies.

The estimation error has been changed between 0.22 to 0.32 because of the optimization process. The interactive learning process has been performed 100 times to show the distribution of the error because the randomness see figures 4 and 5.

By comparing the occupancy estimation results in the case of 50 asks (average error is 0.24 person) with the estimation results of the decision tree using labels from video cameras (average error was 0.19 person), it is found that they are quite similar, see figures 6 and 7.

For more robust validation of interactive approach, different scenarios have been investigated by changing their parameters (ϵ , error ratio, class weight), see table 3. In order to compare the change in average error and find the best values of:

- The distance of the neighborhood $\epsilon \in [0, 1]$
- The error ratio is $E_r \in [1, 2)$
- The weight of each class C_w

Five case studies have been investigated, therefore the interactive learning process has been performed 100 times in each case study to show the distribution of the error because of the random replies of the asks.

TABLE 3. New service requiring occupancy/activity.

case study	neighborhood distance ϵ	error ratio E_r	class weight C_w	average error decision tree	average error parameterize classifier	number of ask
1-initial case study	0.5	1.5	4	0.24	0.28	38
2- decrease ϵ	0.2	1.5	4	0.245	0.27	72
3- increase ϵ	0.8	1.5	4	0.292	0.288	26
4- increase E_r	0.5	2	4	0.256	0.282	35
5- decrease C_w	0.5	1.5	10	0.24	0.27	46

- Case study 1: is considered as an initial one with ($\epsilon = 0.5$, $E_r = 1.5$ and $C_w = 4$) and occupancy estimation average error equal to 0.24 for decision tree and 0.28 for parameterized classifier.
- Case study 2: the neighborhood distance is decreased from $\epsilon = 0.5$ to $\epsilon = 0.2$ that leads to increasing the number of asks from 38 to 72 and the average error is kept 0.24 for decision tree and is decreased a little for the parameterized classifier with 0.27 average error. It means no value is noticed by increasing the number of ask over 38 asks, while it has a small effect on the parameterized classifier estimator and its optimization method.

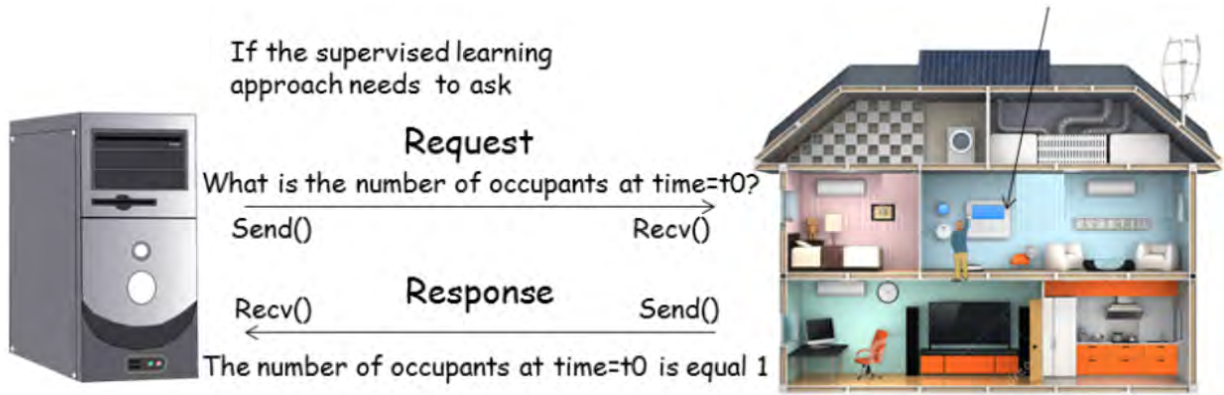


FIGURE 8. General principle of interactive learning approach.

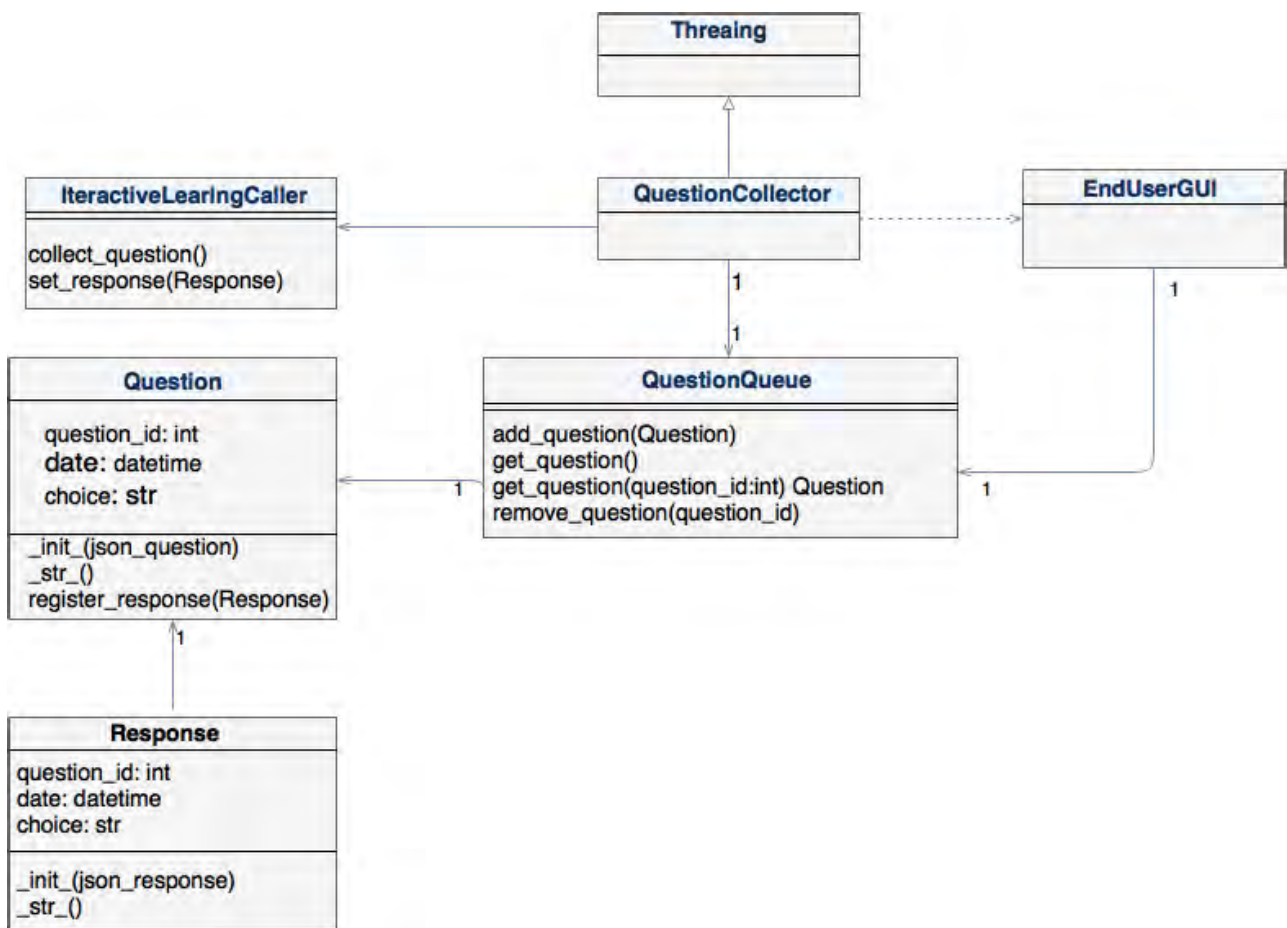


FIGURE 9. Class diagram of occupancy estimation using real time interactive learning approach.

- Case study 3: the neighborhood distance is increased from $\epsilon = 0.5$ to $\epsilon = 0.8$ that leads to decrease the number of asks from 38 to 26 and the average error increased from 0.24 to 0.29 for decision tree and increase a little from 0.28 to 0.288 for the parameterized classifier. It means the increase in ϵ value made the number of asks less and not enough to build an acceptable estimator

for the decision tree, and it has a small effect on the parameterized classifier estimator.

- Case study 4: the error ratio is increased from $E_r = 1.5$ to $E_r = 2$ that leads to decrease the number of asks a little from 38 to 35, with a slight increase in average error for decision tree 0.256 and 0.282 for the parameterized classifier. It means this increase has no

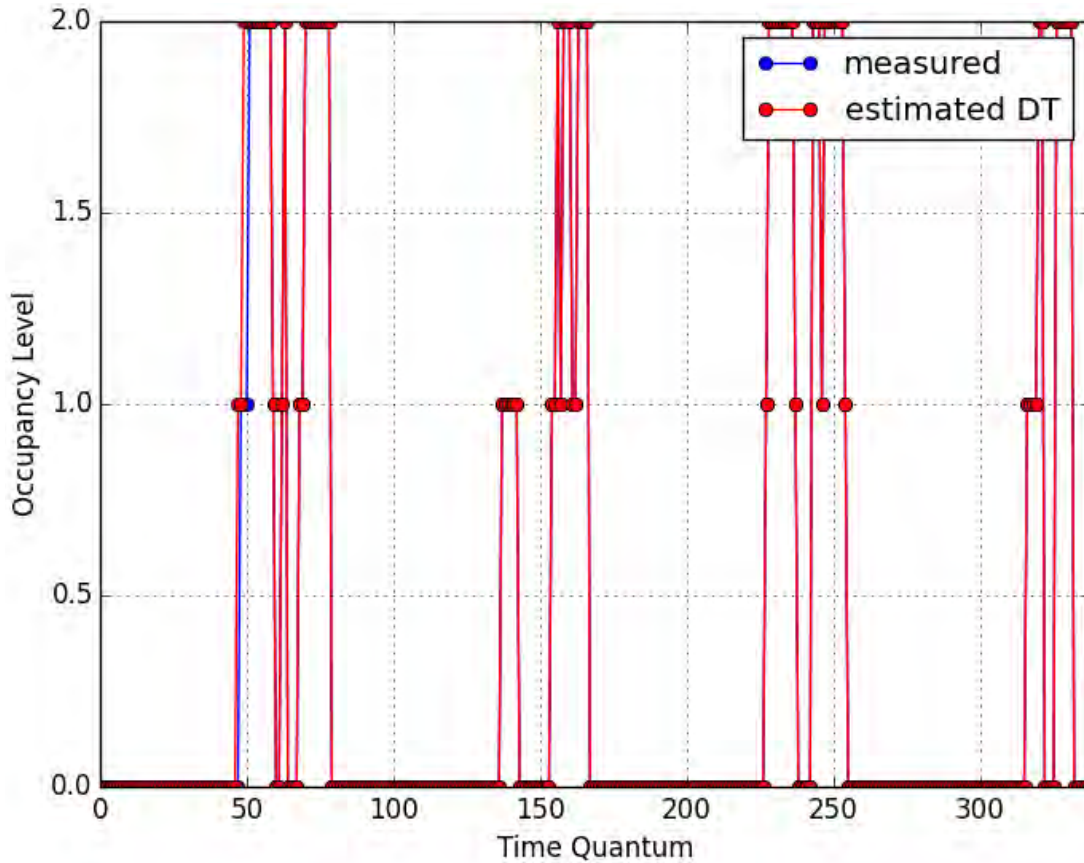


FIGURE 10. Occupancy estimation from DT with 3 occupancy levels and using interactive learning, time quantum =30 minutes. $\epsilon = 0.5$, $E_r = 1.5$, $C_w = 3$ and 16 asks.

much effect on both decision tree and parameterized classifier.

- Case study 5: the class weight is increased from $C_w = 4$ to $C_w = 10$ that leads to increasing the number of asks from 38 to 46 and the average error is almost the same for decision tree 0.24 and little decrease from 0.28 to 0.27 for the parameterized classifier.

Table 2 shows a summary of the 5 case studies, it concludes that the increase of the neighborhood distance (ϵ) leads to increasing the number of asks, also reduces the error (complex context), while it depends on collecting the asks to build the estimator model. The occupancy estimation of parameterized classifier will not be affected. It can be explained because the decision tree estimator depends on the number of asks to build an acceptable estimator. Increasing the error ratio E_r will decrease the number of asks but with more sensitivity to fake replies, and Increasing the level weight C_w will increase the number of asks but will also confirm the replies (redundancy). It has been found that the number of asks equals 38 can be achieved by taking ($\epsilon = 0.5$, $E_r = 15$ and $C_w = 4$) i.e case study 1. Its good enough in decision tree with an average error equal to 0.24 and parameterized classifier estimators with an average error equal to 0.28. However, no added value is noticed when increasing the number of asks (i.e case study 5 and case study 2). Conversely, it will

both the users to be involved in the estimation process. It is important to mention that decision tree estimators in all case studies start occupancy estimation with a high average error corresponding to a little number of asks (training data) with an average error almost 0.7, and improve the estimation process by collecting replies, which leads to decrease the average error to 0.2. On other hand, parameterized classifier does not need a big number of asks comparing with the number used in decision tree. The estimation error is between 0.22 to 0.35 smoothly in each case study. It can also be noticed that the asking process is dependent on the classifier used because of the estimation error intervenes.

All these results lead to consider interactive learning approach as an acceptable solution to avoid the camera use to determine occupancy.

VII. IMPLEMENTATION AND EXPERIMENTATION WITH THE REAL-TIME INTERACTIVE LEARNING APPLICATION

A real interactive learning system is proposed based on a discrete feedback from occupants using a screen/keyboard device. It suggests a client-server architecture to implement this application. A system makes it possible to a server to send questions for the occupants (client side) in order to obtain the occupancy (labels). After deciding to send a question, it appears on the client side with an alarm to attract his/her

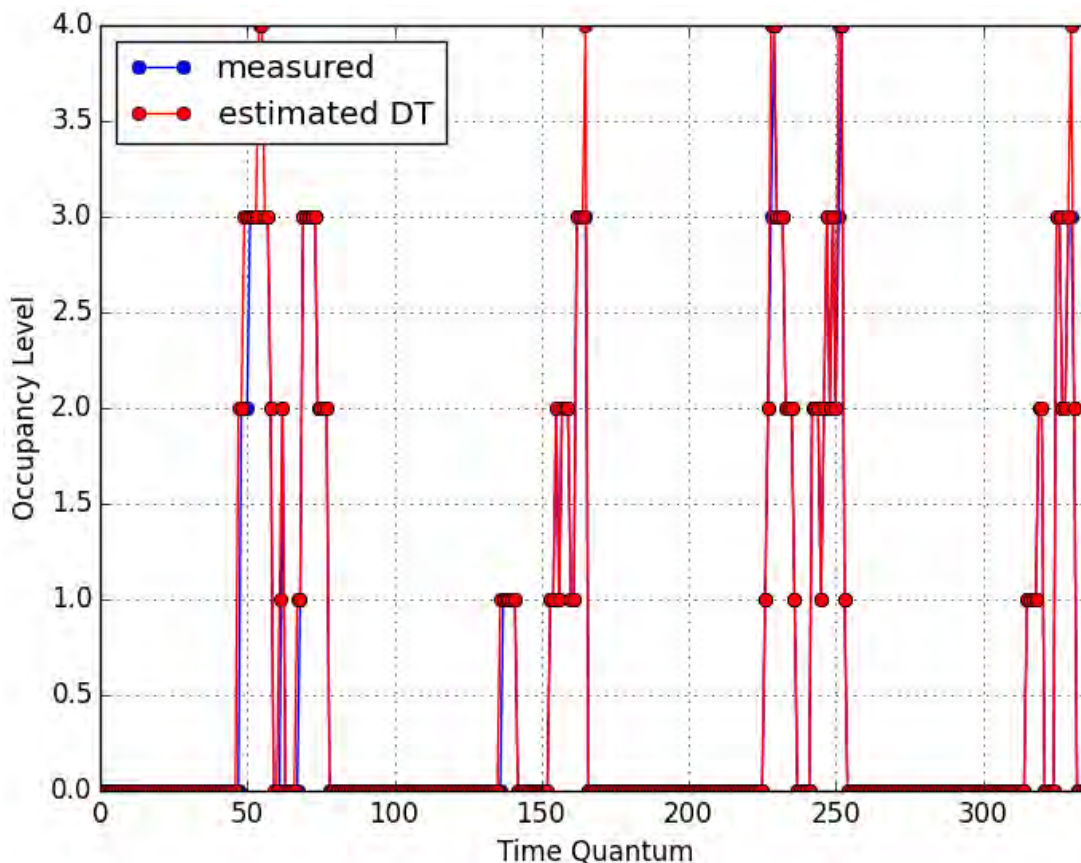


FIGURE 11. Occupancy estimation from DT with 5 occupancy levels and using interactive learning, time quantum =30 minutes. $\epsilon = 0.5, E_r = 1.5, C_w = 3$ and 21 asks.

attention for answering a new question. The occupants have the right to reply by sending the number of occupants among the available options or to cancel it. Collecting the replies will be used by a supervised learning method (i.e decision tree) in a training data or parameterized classifier in the optimization process. Figure (8) presents a general idea of the proposed real interactive learning system.

For interactive applications, a human-machine interface (HMI) allows humans to interact with the occupancy estimation. HMI is displayed with a machine with touch display, a computer with a keyboard, a push button or a mobile device. Choosing the right HMI can be as important as considering the capabilities of the process behind it. The proposed human-machine interface is easy to understand and gives clear options to end users. With a laptop device, a Python based human-machine interface has been proposed for interactive learning application to be used by the end users in a very easy way see (figure 9). Each question is displayed on the screen with its order, date and time i.e. (Q1, 02/05/2017 14:38:18 How many occupants in last 30 minutes? (0...6)), while in a response area, there are 7 options to answer, defined accordingly to a minimum and a maximum possible number of occupants with a timeout of 3 hours for each question. The user has to select the question, choose one option and click on the send button, or occupants

can cancel the question by clicking on cancellation check box. Many questions could appear on the screen if the user is not available for answering. In this case, the user has to choose among the questions or he could answer all of them.

For more details of the proposed approach, (see figure 9). It shows a class diagram of the interactive learning system.

In addition, a question is removed from the screen after a specific time i.e. 6 hours here, in order to avoid confusing the user by many questions, in case he could not reply for long period. Human-machine interface (HMI) has been built using Tkinter in a Python environment.

Day	1	2	3	4	5	6	7	8	9	10
Number of asks	10	5	0	0	1	0	0	0	0	0

A. RESULTS

Considering the same case study of the office, the real-time system launched from 07/04/2017, (see figure 8).

Different experiments have been done using the following thresholds $\epsilon = 0.5, E_r = 1.5, C_w = 4$. The first experiment is occupancy estimation using 3 occupancy levels to generate decision trees, the results have been obtained till 13/04/2017 with an average error 0.008 person, (see figure 10).

Decision tree needs 16 asks for training data to build an acceptable estimator. The following table illustrates how

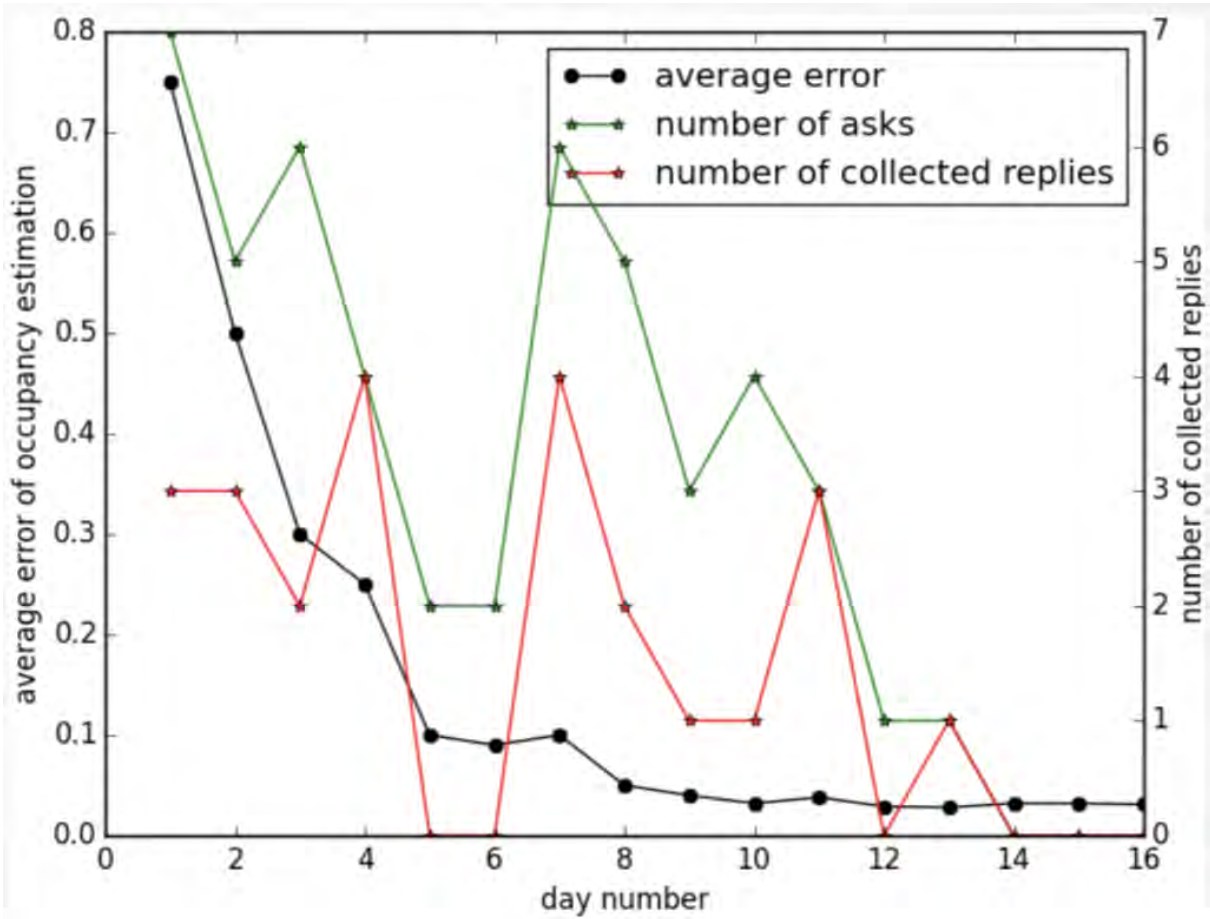


FIGURE 12. Black plot refers to occupancy estimation error each day using decision tree with interactive learning. Green plot refers to the number of asks each day. The decision tree has been deployed for 5 occupancy levels, time quantum =30 minutes. $\epsilon = 0.5$, $E_r = 1.5$, $C_w = 3$ and 24 asks.

the 16 asks are distributed along the days with decision tree.

The second experiment continues in estimating occupancy using 5 occupancy levels to generate decision trees with an average error of 0.03, (see figure 11). Decision tree needs 21 asks for training data to build an acceptable estimator see the following table.

Day	1	2	3	4	5	6	7	8	9	10
Number of asks	10	4	0	0	2	1	2	1	0	0

Occupancy estimation using decision tree and interactive learning with an average error 0.03 person is more efficient than using decision tree and manually labeling from the video camera with an average error of 0.2 person [20]. This improvement in occupancy estimation results can be explained by the precise answers to all the questions which have appeared on the HMI. They have been replied by an occupant during a training period of decision tree. While in manually labeling from a video camera, average values of occupancy have been obtained, with some human mistakes during labeling. Probably the average error will decrease if the end user does not feel concerned by the estimation process. The final experiment has been proposed to analyze

the estimation process in case of implementing the interactive process where the users who are not really involved by this research. The following table needs more days for collecting the required answers (20 asks) as compared to the second experiment. This result proves that the time of collecting the training data depends on the end user interest. Figure 12 shows the improvement in an average error of occupancy estimation each day during 14 days with 24 asks, which is directly related with collecting the training data. Green plot shows the number of asks during the interactive process each day, while the red plot shows only the collected replies from the end user each day during the interactive process.

Day	1	2	3	4	5	6	7	8	9	10	11	12	13	14	15
Number of asks	3	3	2	4	0	0	4	2	1	1	3	0	1	0	0

The estimation process starts with a high average error on the first day which is equal to 0.75. After collecting the required training data, it starts to improve the estimation results with an average error equal to 0.1 person at the fifth day. After obtaining all the required answers (training data) the average error of occupancy estimation decreases and starts to be almost stable with an average error equal to 0.032 person.

VIII. CONCLUSION

An interactive learning methodology has been proposed in this paper to avoid the manual labeling of actual occupancy from a video camera in a room for a supervised learning approach. For privacy preserving purposes, little number of interactions with occupants to estimate occupancy in a zone. Two different classifiers have been deployed together with the interactive learning process: a pure C45 decision tree algorithm and a parameterized rule-based classifier. The approach can be easily extended to any kind of classifier. The C45 decision tree algorithm is very general because its structure is not assumed: it can be discovered from the real data and can be therefore extended to any room with any sensors. It gives the best results after about 14 *asks*. The parameterized classifier yields better results at first but because the number of parameters (2) is much less than the C45 decision tree (about 45 parameters), the C45 decision tree finally estimates better the number of occupants although the parameterized classifier directly minimizes the estimation error and the classification (with C45, classifying in class 2 or in class 3 instead of class 1 has the same impact). Due to the fact that the structure of parameterized classifier is predefined, the adaptation capability to another context is less: a relevant structure has to be proposed. A Real-time application has been developed for occupancy estimation with an average error 0.03 person and 16 *asks* for the training period, this result leads to consider interactive approach as more efficient for occupancy estimation than the other methods taking into account the context. It is the main step to collect knowledge about the relations between user behaviour and energy use. Interactive learning approach can also be combined with estimation activities approach, in order to avoid to send a question in case of estimated activities with non-interaction possibility. Estimation of human occupancy and activities is one challenge for existing and future smart building occupant services. A considerable amount of research work addresses the problem. In general whatever the application is, occupancy and activity estimation should be known to define the state of the human building part. It is useful for performance guaranty and simulation during the design phase, calculate heat gains from bodies for simulation and parameter estimation, replay/determine the best solution for the past or future, explanation to help occupants to understand their energy management system, diagnosis and failure detection, usage performance indicators.

REFERENCES

- [1] K. Tijani, Q. D. Ngo, S. Ploix, B. Haas, and J. Dugdale, "Towards a general framework for an observation and knowledge based model of occupant behaviour in office buildings," in *Proc. 6th Int. Building Phys. Conf. (IBPC)*, 2015, pp. 609–614.
- [2] L. Scanu, S. Ploix, E. Wurtz, and P. Bernaud, "Model tuning approach for energy management of office and apartment settings," in *Proc. 15th IBPSA Conf. (Building Simulation)*, San Francisco, CA, USA, 2017, pp. 858–867. doi: 10.26868/25222708.2017.233.
- [3] S. Mahendra, A. Manar, P. Stéphane, and W. Frederic, "A study of interactions between anticipative and reactive building energy management systems," in *Proc. IPBSA*, Paris, France, 2014, pp. 1–8.

- [4] A. A. Alyafi, M. Pal, S. Ploix, P. Reignier, and S. Bandyopadhyay, "Differential explanations for energy management in buildings," in *Proc. IEEE Comput. Conf.*, London, U.K., Jul. 2017, pp. 507–516.
- [5] S. Mahendra, S. Ploix, and F. Wurtz, "Handling discrepancies in building reactive management using hazop and diagnosis analysis," in *Proc. ASHRAE*, Feb. 2016.
- [6] L. Chen, J. Hoey, C. D. Nugent, D. J. Cook, and Z. Yu, "Sensor-based activity recognition," *IEEE Trans. Syst., Man, Cybern. C, Appl. Rev.*, vol. 42, no. 6, pp. 790–808, Nov. 2012.
- [7] P. Gargallo, P. Sturm, and S. Pujades, "An occupancy–depth generative model of multi-view images," in *Proc. Asian Conf. Comput. Vis.*, 2007, pp. 373–383.
- [8] M. Amayri, A. Arora, S. Ploix, S. Bandyopadhyay, Q.-D. Ngo, and V. R. Badarlu, "Estimating occupancy in heterogeneous sensor environment," *Energy Building*, vol. 129, pp. 46–58, Oct. 2016.
- [9] F. Pernkopf and J. A. Bilmes, "Efficient heuristics for discriminative structure learning of Bayesian network classifiers," *J. Mach. Learn. Res.*, vol. 11, pp. 2323–2360, Aug. 2010.
- [10] N. Bouguila, "Hybrid generative/discriminative approaches for proportional data modeling and classification," *IEEE Trans. Knowl. Data Eng.*, vol. 24, no. 12, pp. 2184–2202, Dec. 2012.
- [11] M. Jin, N. Bekiaris-Liberis, K. Weekly, C. J. Spanos, and A. M. Bayen, "Occupancy detection via environmental sensing," *IEEE Trans. Autom. Sci. Eng.*, vol. 15, no. 2, pp. 443–455, Apr. 2018.
- [12] B. D. Minor, J. R. Doppa, and D. J. Cook, "Learning activity predictors from sensor data: Algorithms, evaluation, and applications," *IEEE Trans. Knowl. Data Eng.*, vol. 29, no. 12, pp. 2744–2757, Dec. 2017.
- [13] M. A. Sehili, D. Istrate, B. Dorizzi, and J. Boudy, "Daily sound recognition using a combination of GMM and SVM for home automation," in *Proc. 20th Eur. Signal Process. Conf. (EUSIPCO)*, Aug. 2012, pp. 1673–1677.
- [14] R. Valle, "Abroa: Audio-based room-occupancy analysis using Gaussian mixtures and hidden Markov models," in *Proc. Future Technol. Conf. (FTC)*, Dec. 2016, pp. 1270–1273.
- [15] F. J. Ordóñez and D. Roggen, "Deep convolutional and LSTM recurrent neural networks for multimodal wearable activity recognition," *Sensors*, vol. 16, no. 1, p. 115, 2016. [Online]. Available: <http://www.mdpi.com/1424-8220/16/1/115>
- [16] N. Dalal and B. Triggs, "Histograms of oriented gradients for human detection," in *Proc. IEEE Int. Conf. Comput. Vis. Pattern Recognit. (CVPR)*, vol. 1, Jun. 2005, pp. 886–893.
- [17] S. P. Tarzia, R. P. Dick, P. A. Dinda, and G. Memik, "Sonar-based measurement of user presence and attention," in *Proc. 11th Int. Conf. Ubiquitous Comput. (UbiComp)*, New York, NY, USA, 2009, pp. 89–92.
- [18] Z. Yang and B. Becerik-Gerber, "How does building occupancy influence energy efficiency of HVAC systems?" *Energy Procedia*, vol. 88, pp. 775–780, Jun. 2016. [Online]. Available: <http://www.sciencedirect.com/science/article/pii/S187661021630176X>
- [19] K. Kalvelage and M. Dorneich, "A user-centered approach to user-building interactions," in *Proc. Hum. Factors Ergonom. Soc. Annu. Meeting*, 2014, pp. 2008–2012.
- [20] M. Amayri, S. Ploix, P. Reignier, and B. Sanghamitra, "Towards interactive learning for occupancy estimation," in *Proc. 16th Int. Conf. Artif. Intell. (ICAI)*, 2016, pp. 1–9.



MANAR AMAYRI received the bachelor's degree in power engineering from Damascus University, Syria, the master's degree in electrical power systems from Power Department, Damascus University, the master's degree in smart grids and buildings from ENES3, INP-Grenoble (Institute National Polytechnique de Grenoble), in 2014, and the Ph.D. degree in energy smart-buildings from the Grenoble Institute of Technology, in 2017. She is currently a Researcher with CNRS, G-SCOP Lab (Sciences pour la conception, l'Optimisation et la Production). Her work as a Postdoctoral Fellow is part of a French National Project on building performance named COMEPOS, which focuses on positive-energy detached houses. She is developing a tool to calculate usage indicators in different sites. Her current research interests focus on developing interactive approaches based on machine learning algorithms applied to different smart buildings related tasks (e.g., occupancy estimation and activity recognition).



STÉPHANE PLOIX received the M.Tech. degree in mechanics and electricity and the M.Sc. degree in control from a French “grande école[MOU1],” and the Ph.D. degree in control engineering and signal processing from the Institute National Polytechnique de Lorraine, in 1998. He became a Full Professor in 2009. He is currently a Professor with the Energy, Water and Environment Department, Grenoble Institute of Technology. His studies set at the interface of engineering, and control and

computer sciences. He started by extending algorithms for diagnostic analysis coming from artificial intelligence community to different engineering area, including sensor networks for hydrology, water networks, and photovoltaic farms. In 2006, he decided to redirect his studies in energy smart-building and to study how computers and control sciences could contribute to this new application area. His studies led to the development of the G-homeTech software for global anticipative model-based energy management of buildings. In 2012, he was part of the team that won the Solar Decathlon Europe worldwide competition with the CANOPEA building equipped with the GhomeTech software. He is one of the Founders of the Vesta-System company that markets applications for building energy management. Then, his interest turned to human-machine cooperation in building energy management: how to get the best from occupants and from smart systems thanks to cooperative mechanisms? He has been involved in various industrial projects with small and big companies and institutions, such as EDF, CSTB, Orange, CEA, Schneider Electric, and Engie.



NIZAR BOUGUILA received the engineering degree from the University of Tunis, Tunis, Tunisia, in 2000, and the M.Sc. and Ph.D. degrees in computer science from Sherbrooke University, Sherbrooke, QC, Canada, in 2002 and 2006, respectively. He is currently a Professor with the Concordia Institute for Information Systems Engineering (CIISE), Concordia University, Montreal, QC, Canada. He has authored or coauthored more than 200 publications in several prestigious journals and conferences. His research interests include machine learning, data mining, computer vision, and pattern recognition applied to different real-life problems (e.g., quality control, security, smart buildings, and finance). He received the Best Ph.D. Thesis Award in Engineering and Natural Sciences from Sherbrooke University in 2007. He was a recipient of the prestigious Prix d'excellence de l'association des doyens des études supérieures au Québec (Best Ph.D. Thesis Award in Engineering and Natural Sciences in Quebec), and a runner-up for the prestigious NSERC doctoral prize. He is the Research Chair of Concordia University. He is a regular reviewer for many international journals and serving as an Associate Editor for several journals, such as *Pattern Recognition* journal. He is a licensed Professional Engineer registered in Ontario, and a Senior Member of the IEEE.

and conferences. His research interests include machine learning, data mining, computer vision, and pattern recognition applied to different real-life problems (e.g., quality control, security, smart buildings, and finance). He received the Best Ph.D. Thesis Award in Engineering and Natural Sciences from Sherbrooke University in 2007. He was a recipient of the prestigious Prix d'excellence de l'association des doyens des études supérieures au Québec (Best Ph.D. Thesis Award in Engineering and Natural Sciences in Quebec), and a runner-up for the prestigious NSERC doctoral prize. He is the Research Chair of Concordia University. He is a regular reviewer for many international journals and serving as an Associate Editor for several journals, such as *Pattern Recognition* journal. He is a licensed Professional Engineer registered in Ontario, and a Senior Member of the IEEE.



FREDERIC WURTZ received the Ph.D. degree in electrical engineering from the National Polytechnic Institute of Grenoble, in 1996. He was a Research Officer with the CNRS from 1998 to 2011. Since 2011, he has been a Research Director with the CNRS. He has empowerment to lead research, in 2008. He was an Engineer of ENSIEG - National Polytechnic Institute of Grenoble, in 1993, with ongoing responsibilities. From 2006 to 2014, he was in charge of the

MAGE Team (Models, Methods, and Methodologies applied to Electrical Engineering), G2Elab, a team of 12 permanent staff (researchers and research professors), 1 IR, 1 IE, and 29 Ph.D. students.

...