



HAL
open science

It's what's inside that counts: computer-aided tomography for evaluating the rate and extent of wood consumption by shipworms

François Charles, Jennifer Coston-Guarini, Jean-Marc Guarini, François Lantoine

► To cite this version:

François Charles, Jennifer Coston-Guarini, Jean-Marc Guarini, François Lantoine. It's what's inside that counts: computer-aided tomography for evaluating the rate and extent of wood consumption by shipworms. *Journal of Wood Science*, 2018, 64 (4), pp.427-435. 10.1007/s10086-018-1716-x . hal-02108700

HAL Id: hal-02108700

<https://hal.science/hal-02108700v1>

Submitted on 24 Apr 2019

HAL is a multi-disciplinary open access archive for the deposit and dissemination of scientific research documents, whether they are published or not. The documents may come from teaching and research institutions in France or abroad, or from public or private research centers.

L'archive ouverte pluridisciplinaire **HAL**, est destinée au dépôt et à la diffusion de documents scientifiques de niveau recherche, publiés ou non, émanant des établissements d'enseignement et de recherche français ou étrangers, des laboratoires publics ou privés.



It's what's inside that counts: computer-aided tomography for evaluating the rate and extent of wood consumption by shipworms

François Charles¹ · Jennifer Coston-Guarini² · Jean-Marc Guarini¹ · François Lantoine¹

Received: 27 November 2017 / Accepted: 3 March 2018
© The Japan Wood Research Society 2018

Abstract

Experiments were done to investigate in situ colonization of pine wood blocks by marine wood borers at the mouth of a small mountain river in the foothills of the Eastern Pyrenees. Standardized blocks were recovered after remaining underwater for increasingly long durations, until the available resource was exhausted by the shipworms assemblage that developed. Computer-aided tomography (CT) was used for visualizing and quantifying biogenic structures into the wooden blocks. The biodiversity survey of the wood pieces colonized indicated that up to three species of shipworms shared the resource at the same time. The specific wood consumption rate of *Nototeredo norvegica* was estimated $185 \text{ mm}^3 \text{ ind}^{-1} \text{ day}^{-1}$. The quantification of voids created by shipworm crowding indicated that total tunnelling represents, on average, 60% of the initial volume of a wood block, revising upward earlier estimates of wood destruction by 28%. CT analysis provides the quantitative measurements necessary to parameterize individual-based growth models linking wood consumption with the species diversity of shipworm assemblages.

Keywords Wood destruction · Coarse woody debris · Teredinidae · CT scan · Modelling

Introduction

Forested watersheds provide adjacent coastal environments with large, localized inputs of plant debris that furnish nutrients in biogeochemical cycles and support diverse biological communities [1–5]. These inputs have occurred for millions of years along the planet's coastlines but little is known about the rates of turnover of wood materials in marine environments. These shortcomings result from, on the one hand, lack of research interest in predicting occurrences and extents of dead wood fluxes and, on the other hand, the practical difficulties of measuring the biological processes involved when these materials are largely inaccessible, once they move off the shore. Wood materials reaching the coast have long been treated as a nuisance to navigation

or a hazard and for decades these materials have been regularly removed during port, beach and waterway maintenance operations [2].

Biodegradation of wood in marine habitats is mostly caused by wood-boring bivalve mollusks known for their destructive attacks on immersed wooden structures since antiquity [6, 7]. Scientific interest in these animals has therefore been motivated primarily by the need to find ways to counteract the damage they inflict on maritime wooden structures such as bridges, piers, ships and shipwrecks [8]. Recent studies either deal in their majority with the strategies that enable these animals to digest and supplement a nutritionally imbalanced diet [9–13] or focus on the ecology of species which, by relying on a scarce and ephemeral food resource, are appealing as biological models to explore metacommunities of patchy habitats [3, 14–16]. However, quantifying the turnover rate of dead wood at sea by shipworm communities has yet to be estimated.

Shipworms belong to the family Teredinidae and are able to convert in a short time, large quantities of woody debris into biomass [17, 18]. After they settle on a piece of wood as larvae, they develop, reproduce and die inside the wood mass. Simple gravimetric measurements have shown that in temperate latitude areas, these species can remove about half

✉ François Charles
francois.charles@obs-banyuls.fr

¹ Sorbonne Université, CNRS, Laboratoire d'Ecogéochimie des Environnements Benthiques, LECOB, 66650 Banyuls-sur-Mer, France

² UMR 6539-LEMAR CNRS/UBO/IRD/Ifremer, Laboratoire des sciences de l'environnement marin-IUEM, Rue Dumont D'Urville, 29280 Plouzané, France

the mass of coarse woody debris available to them, within 6 months [19]. This first estimate only partially reflects the full extent of wood consumption, as weight measurements of infested wood boards necessarily include the mass of the organisms themselves and the calcareous layer that lines the wall of the shipworms' tunnels. The weight of these combined parts is assumed to be small in comparison to that of wood itself [16, 19] but a more precise estimate should be made, especially when wood boards are overcrowded by shipworms and knowing that density of mineral calcium carbonate is 6–7 times greater than that of most woods.

A major difficulty for making these estimates has been simply detecting the presence and size of these organisms in wood. This is because in addition to being opaque, wood is mechanically stronger than shipworms' biological structures, which excludes any quantification of the voids and tubes that shipworms create, by dissecting the wood matrix, for instance. To overcome this obstacle, the X-rays imagery has been used since at least the early 1920s [8, 20–22]. However, standard X-ray methods had only limited interest for the quantification of wood consumption by wood-boring species, until the advent of computer-aided tomography which permitted the 3D nature of the tunneling to be analyzed, including void volumes inside infected wooden blocks [23, 24].

To consider the response of organisms to food availability and the effects of teredinids on their resource, this study was designed to describe and quantify wood consumption by a natural community of shipworms at the exit of a small mountainous river in the western Mediterranean. Computed tomography (CT) was used to visualize the tunnelling and calculate volume of voids in standardized wood blocks after being immersed for successively longer periods of time. The estimation of wood loss by CT scan analysis was further compared to that from gravimetric measurements, using modelling. This work aims to provide an accurate assessment of the limit below which shipworms population growth is regulated by crowding and to estimate the re-cycling rate of coarse woody debris at sea by these organisms.

Materials and methods

Experimental design

Detailed descriptions of the experimental conditions are given in Charles et al. [19]. The experiment took place from April 18, 2014 to May 11, 2015 at the mouth of a small river, “La Massane”, which drains a forested, partially protected watershed in the foothills of the French Eastern Pyrenees mountains.

Twenty-four blocks were manufactured in dimensions of: 150 (*L*) × 34 (*T*) × 34 (*R*) mm (*L*-length, *T*-tangential,

R-radial) from commercially available untreated planed cleats (2400 × 34 × 34 mm) of pine wood, *Pinus sylvestris*. The volumetric mass density of the wood was about 500 kg m⁻³ and the average number of annual growth rings visible on cross sections was 4 cm⁻¹. Each wood piece was drilled once perpendicular to the longest dimension (diameter 7 mm), then wooden blocks were arranged by sets of six along four rope lines for installation at the field site (42°32'34.80 N, 3°3'8.38 E) in the recreational port of Argelès-sur-Mer. Lines were weighted at one end and attached at the other end to a floating pontoon in such a way that the wood blocks remained submerged at between 1 and 1.5 m below the water surface.

The lines were then randomly sampled after 13, 21, 30 and 57 weeks respectively. On each occasion, temperature and salinity were measured 1 m below the water surface using a conductivity meter Cond315i (Wissenschaftlich-Technische Werkstätten GmbH, Weilheim, Germany). At the end of the immersion period, five of the six blocks collected were stored at -20 °C, freeze-dried and then epi-fauna and -flora colonizing the surface were carefully removed. The remaining block was broken-up manually to be able to describe the species composition of the wood-boring communities. Species identifications used the illustrated catalogue of Teredinidae authored by Turner [17].

Computed tomography and image analysis

X-ray computer-aided tomography (“CAT scans”) indicates the relative differences in material density as measured by the passage of X-rays through materials. This 3D analysis technique is well adapted to imaging and quantify biogenic structures such as those encountered in these experiments (e.g., tunnel voids, carbonate mineral tube linings, shells and pallets) within the dried wooden blocks. On the acquired scans, bright areas indicate calcified structures, air-filled voids were darkest, and wood or for shipworm soft tissues registered as, intermediate greys.

All blocks were scanned using a medical-grade instrument at the Clinique Saint-Pierre, Perpignan, France. Scanning was performed using a Discovery CT 750 HD scanner (General Electric Healthcare, USA), and imaged with a slice thickness of 0.625 mm (power settings: 120 kV and 20 mA). 240 images (slices, 512 × 512 pixels) with a resolution of 448 dpi were acquired for each block as DICOM files. The resolving power is then on the order of a 0.1 mm for spatial features. Volumes were reconstructed from regions of interest (ROIs) defined as the external boundaries of visible galleries on cross-sectional images of the wood blocks using OsiriX MD[®] software. A total of 20 blocks were scanned and analysed.

Results

Chronicle of wood blocks' infestation

A subset of wood blocks from each exposure duration was reserved for the description of the assemblages of boring species (Table 1) by dissecting the blocks. Up to three species of shipworms (Table 1), namely, *Nototeredo norvagica* (Spengler 1792), *Lyrodus pedicellatus* (Quatrefages 1849) and *Teredo navalis* Linnaeus 1758, were observed in a single block, as well as small isopods ('gribbles', *Limnoria tripunctata* Menzies 1951). The total number of shipworms increased with exposure duration. By the end of the survey, the shipworm species' abundances reached up to 426 individuals distributed among *L. pedicellatus* (52.8%), *T. navalis* (46.7%) and *N. norvagica* individuals (< 1%). The two specimens of the isopod *L. tripunctata* were found only on the block sampled at the end of the experiment.

At the end of the first period of exposure, only the outer 2 mm of the wood blocks were moistened and they were essentially dry in the interior: yet, they already sheltered specimens of both *N. norvagica* and *L. pedicellatus*. The *N. norvagica* individuals were longer than *L. pedicellatus* individuals, which were themselves already 4 cm long adult specimens. The *T. navalis* population began to increase by the end of the second submersion period (21 weeks underwater). At this time, the cores of the wood blocks were still dry and *N. norvagica* was represented by individuals that had by far the largest body sizes. *T. navalis* accounted for juveniles and young adults, whereas *L. pedicellatus* was mainly represented by small individuals with the largest ones containing larvae in their mantle region. At the end of the third-time point (30 weeks), the wood blocks were entirely wet on the interior, a few dead individuals were observed as well as 'ghost' tunnels that contained only the remains of an animal. At this time, the number of *T. navalis* recruits had increased, and *L. pedicellatus* accounted for roughly 40% of the total shipworm

population. Large-size individuals from both species *T. navalis* and *L. pedicellatus* were incubating larvae.

By the end of the monitoring, the number of *N. norvagica* remained basically unchanged in the blocks, but individuals of this species had by far the largest body size among the assemblages observed, whereas populations of *T. navalis* and *L. pedicellatus* were still increasing.

Finally, water salinity remained high, and fairly constant throughout the experimental period (Table 1).

Rates of wood consumption

Axial and sagittal images (Fig. 1) of the wooden blocks distinguished the outlines of tunnels, the calcareous lining on the walls of some tunnels, soft body parts, shell valves, pairs of pallets, and even chambered at the posterior end of some large-size tubes (Fig. 1A). The number and size range of the tunnels increased with the length of the exposure to sea water, indicating that these organisms arrived and installed in the wood blocks, progressively. Attacks occurred on every face of the wood blocks (Fig. 1) but tunnelling was mostly oriented along the longitudinal plan of wood blocks. Wood blocks appeared overcrowded well before the end of the survey. Cross-sectional images of the blocks (Fig. 1B) resemble honeycomb structures, with "cells" of various sizes randomly distributed across the sections.

The volume of wood removed was estimated by identifying ROIs on cross-sectional images (Fig. 1B) of the scanned wood blocks. The image resolution allowed for individual measurements (Fig. 2) on blocks from the first two exposure durations (i.e., 13 and 21 weeks). The boards of the first series contained on average 9 ± 3 (mean \pm SD) individual tunnels with volumes ranging from 3 to 1400 mm³ (mean 343 ± 370 mm³; Fig. 3). In these samples, shells, soft body parts and pallets could be recognized in the images, but tunnel walls were free of calcareous lining (Fig. 1). Boards from the second series contained 125 ± 63 (mean \pm SD) individual tunnels with volumes ranging from

Table 1 Monitoring of the degradation and colonization of wood blocks exposed to sea water on April 18, 2014, at the mouth of the Massane River (Mediterranean Sea, France)

Collection dates	July 24, 2014	Sept 11, 2014	Nov 12, 2014	May 11, 2015
Exposure time (weeks)	13	21	30	57
Exposure time (days)	97	146	208	402
Water temperature (°C)	22	22.8	16	20.4
Salinity	37.4	37.2	35.9	34.9
<i>Lyrodus pedicellatus</i>	5	108	78	225
<i>Nototeredo norvagica</i>	2	1	8	2
<i>Teredo navalis</i>		11	124	199
<i>Limnoria tripunctata</i>				2

Species assemblages have been described on each collection date from the manual destruction of a block reserved for this purpose

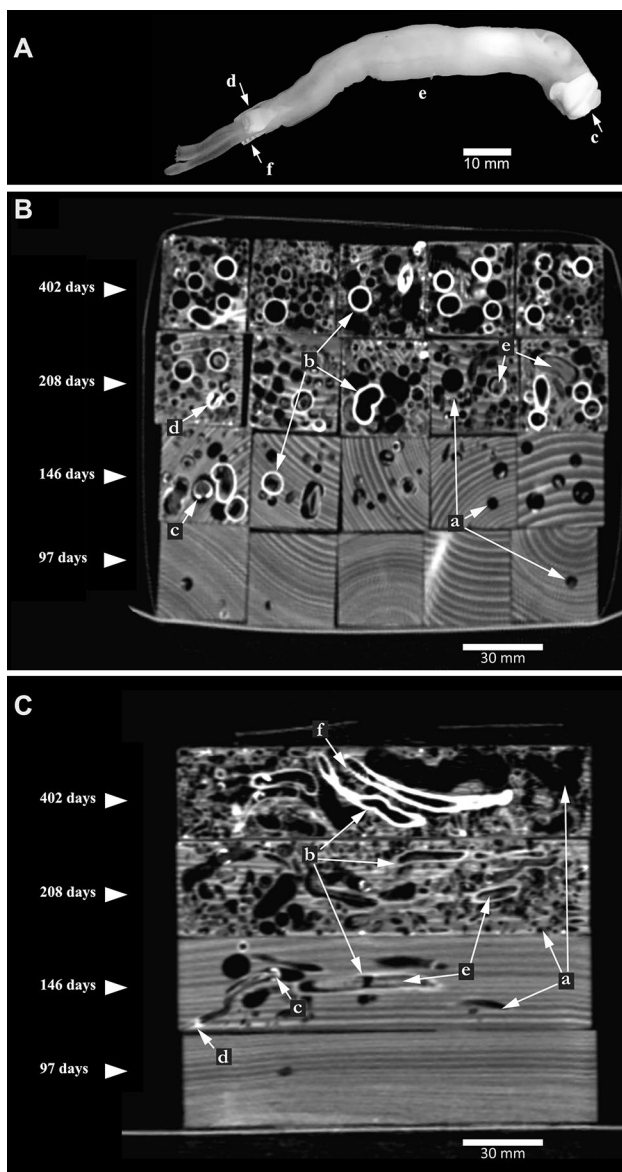


Fig. 1 Photograph (A) of a shipworm specimen, *Nototeredo norvegica*. Axial (B) and sagittal (C) X-ray CT scan images of the set of experimental wood blocks. Samples are arranged from the bottom to the top of the images according to the duration of their exposure to seawater. Images show: (a) tunnels without calcareous lining, (b) thick calcareous lining of tubes, (c) shipworm shell valves, (d) pallets, (e) soft bodies, (f) concamerated or chambered wall at the posterior end of some tubes

0.1 to 10,414 mm³, (mean = 267 ± 1175 mm³). Walls of several large tunnels were partially covered with a thick calcareous layer. Ninety percent of the individuals had tunnel size below 350 mm³. Several individuals had sizes far outside of the statistical distribution of size calculated from the biggest part of the population (Fig. 3). The maximum rate for the tunneling volume increase was estimated from the largest individual volumes and reached 185 mm³ ind⁻¹ day⁻¹.

The extreme entanglement of shipworm galleries in the wood blocks sampled from the last two submersion intervals prevented determining with any accuracy the continuity of the individual tunnels between the virtual image slices. At this time, not all the tunnels were covered with a calcareous layer and, when present, even if the blind end of tube was sealed off, the calcareous lining did not cover the entire tunnel wall. As a consequence, the space defined by this mineral envelope is always slightly smaller than the volume removed by the animal. Tunnels with thick linings were also the longest; they were chambered at the posterior end of the tube wall (Fig. 1C) and contained pairs of large pallets.

Extent of wood consumption

The variation over time of wood removal from the blocks is presented in Fig. 4. Under the hypothesis of the independence of the sampling, consumption significantly increased between sampling times (Kruskal Wallis test, $df=3$, $p < 0.0005$). Dunn's test, post-hoc multiple comparison tests if differences exist between exposure times for each pairwise comparison, indicated that unless the times were consecutive, differences were significant. There were three distinct phases: an initial phase of latency followed by a sharp increase with high variability that ends when the wood removal noticeably decreased, and the variability reduced drastically. During the first 13 weeks, shipworms removed 2–3.2% of the initial volume of the wooden blocks. Thereafter, removal increased dramatically representing first from 3.8 to 35.4% by the end of the second exposure duration before reaching from 47.2 to 53% of the initial volume by the end of third exposure time. At the end of the monitoring, 55–62% of wood initially available had been removed by the shipworms.

To represent the wood removal dynamics, the following model was designed:

$$\begin{cases} \frac{dX(t)}{dt} = A \cdot \left(1 - \frac{X(t)}{X_{\max}}\right) \\ \frac{dB(t)}{dt} = \rho X(t) \cdot \left(1 - \frac{B(t)}{B_{\max}}\right) \end{cases}, \quad (1)$$

where A is the arrival rate (nb ind day⁻¹), X_{\max} (nb ind) is the carrying capacity of wood surface to host shipworms individuals X (nb ind). ρ (nb ind⁻¹ day⁻¹) is the rate of consumption of the consumed wood volume fraction, $B(t)$ (dimensionless), and B_{\max} (also dimensionless) is the maximum proportion of wood that can be removed. Initial conditions are fixed as $X(t) = 0$ and $B(t) = 0$ at t_0 , being the first time (unknown) at which the wood blocks start to be colonized.

Fig. 2 3D-reconstructions of individual shipworm tunnels in a wood block exposed to seawater during 146 days. ROIs have been manually identified on every virtual slice that were then stitched together by software OsiriX MD®; **A** the whole shipworm assemblage (41,629 mm³), **B** the three largest individuals within the assemblage (25,938 mm³ for all three)

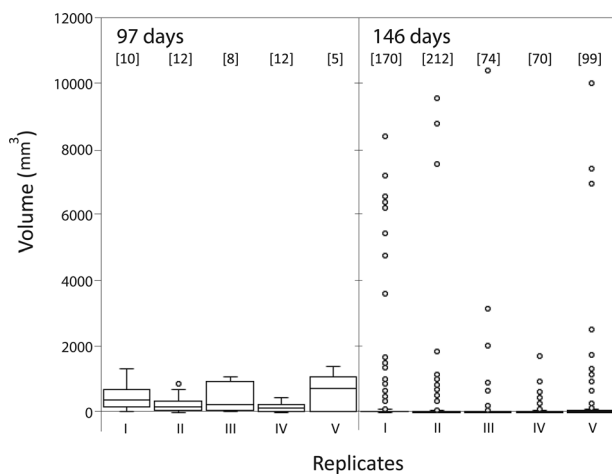
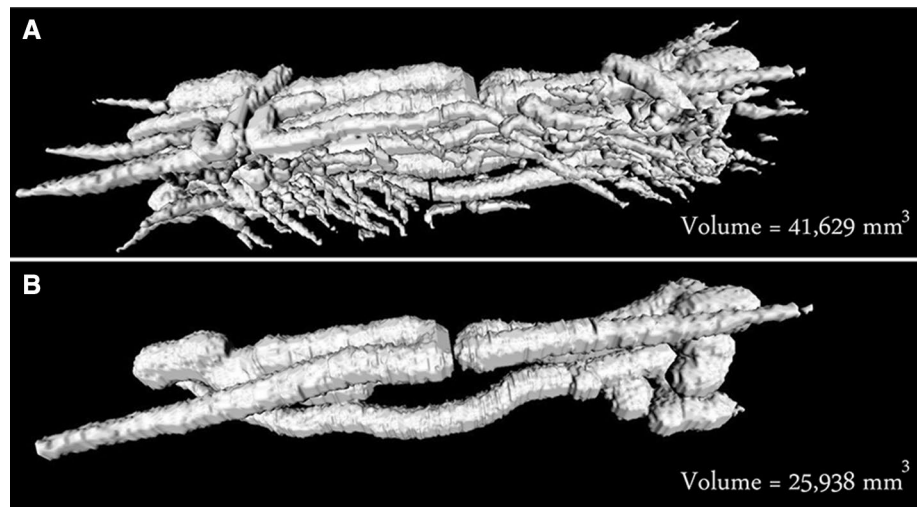


Fig. 3 Distribution of tunnel sizes in replicated wood blocks exposed to sea water for 97 days (left panel) and 146 days (right panel). Outliers (volumes > third quartile + 1.5 × interquartile range) are marked with a small circle. Numbers between brackets are abundances of shipworms in individual wood block

Three parameters of Eq. (1), A , ρ , B_{\max} , and the unknown initial time t_0 , were identified by minimizing the sum of squared differences between simulations and observations (ordinary least squares criterion, OLS), using the simplex algorithm developed by Nelder and Mead [25]. The mean diameter of individuals at the time of recruitment was assumed to be 0.35 mm [26]. As the total surface area of one wood block is 22,712 mm² and the greatest circle possible would occupy 78.5% of the surface area of the square, this means that if the recruits were organized according to a square mesh, their number would be at most 185,717 individuals. As shipworms organize themselves in a random manner and could occupy at best about 60% of the total available surface area [27], X_{\max} was set at a high value of 140,000 individuals. The arrival rate (A) was estimated to

be, on average 1.01 individuals per day, from an initial time (t_0) estimated at 76 days after immersion. The “volume created” was estimated as 0.00011 ind⁻¹ day⁻¹, which corresponds to 19 mm³ ind⁻¹ day⁻¹. Using this model, the final (asymptotic) proportion of consumed wood volume (B_{\max}) was estimated as 0.594.

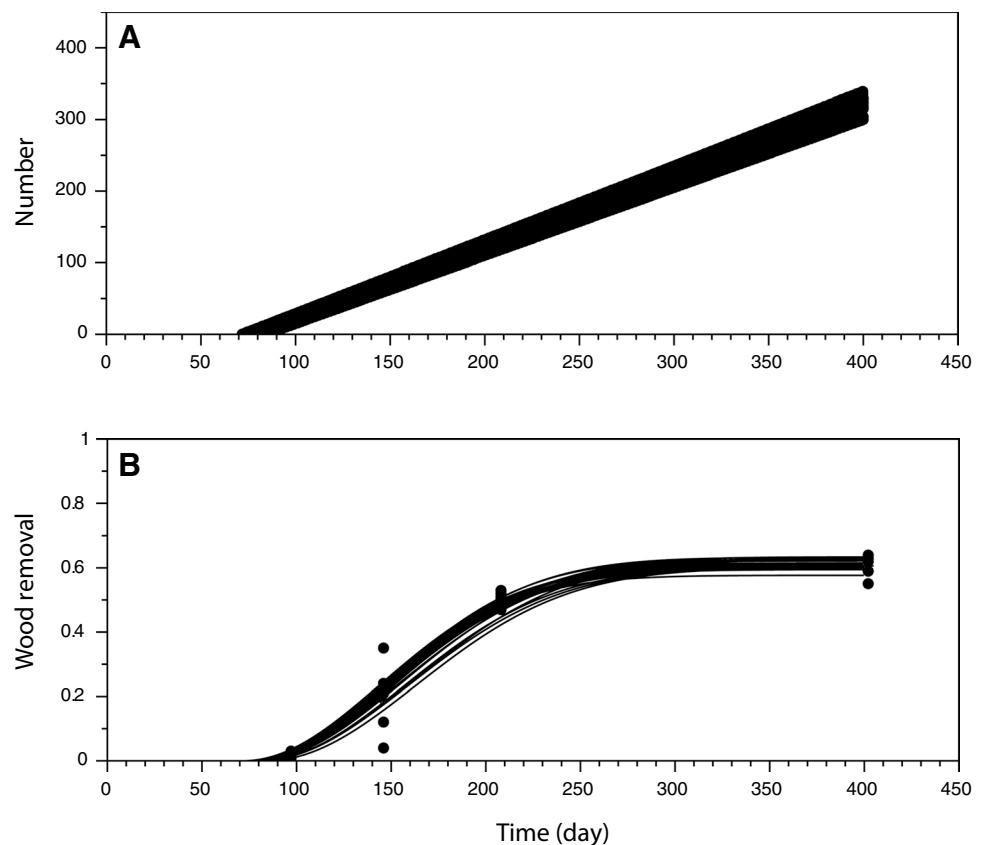
Discussion

Colonization of the wood blocks by shipworms

As expected, shipworms were efficient agents of wood destruction at the mouth of the Massane River where the study was located. All teredinid species reported present in this part of the Mediterranean Sea [28] infected the wood blocks examined. Even if wood blocks appeared outwardly intact, CT scanning revealed numerous tunnels inside. With regard to, at least, the first two exposure periods, numbers of tunnels detected in CAT scans were consistent with the number of individuals recovered from the wood blocks that were opened up for description of assemblages (Table 1). The number of individuals increased in the wood blocks with an apparently continuous arrival of new colonizers based on the tunnel size ranges observed (Table 1; Fig. 1) and the widening of tunnel diameters (Figs. 1, 3). This suggests a continuous recruitment and growth of these species in this area. While it is possible that slightly different growth rates between species could confer a competitive advantage, these are too poorly known to be effectively represented.

Evolution of species composition in the observed assemblages seems to have resulted from the order of species arrival times, but this should be confirmed with larval sampling. Nonetheless, given the starting date of the experiment, the order of arrival of the species followed what Roch [29] described on the shore of the Adriatic Sea, almost 80 years

Fig. 4 Time variation of wood block removal by shipworms from pine planks submerged at the mouth of the Massane River, Mediterranean Sea, France, from April 18, 2014 to May 11, 2015. Dots account for wood removal for each sample; curves account for best fit model estimates for **A** colonization by shipworms and **B** wood block removal



ago. Between April and July, *N. norvegica* and *L. pedicellatus* were the first colonizers. However, the numbers of *N. norvegica* individuals remained low, whereas *L. pedicellatus* numbers increased over the entire study duration. The third species, *T. navalis*, settled later, but had trends similar to *L. pedicellatus*.

Differing reproductive modes between shipworms species [14] produce different population dynamics patterns. For example, *N. norvegica* is a broadcast spawner. It releases gametes and fertilized eggs into the water for long periods of phytoplanktonic development, increasing larval dispersion [26]. Conversely, *L. pedicellatus* and *T. navalis*, which are both brooding species, hold fertilized eggs in gill or mantle pouches and release competent larvae that can settle in hours or days, respectively [26, 30, 31]. This would suggest rapid recruitment and thus high local retention probabilities that could lead to overcrowding of the reproducing adults' habitat [14]. And, as is often observed among related, co-occurring marine invertebrates [32], adults from brooding species are generally smaller than adults from broadcast spawners, which concurs with observations made during our experiments.

Based on these considerations (i.e., body size and abundance), tunnel size was one of the criteria for the detection of the presence of *N. norvegica* inside the CT-scanned wood blocks. The presence of this species was further

comforted by the occurrence of a thick calcareous lining of the borehole, chambers formed at the posterior end of tube and the presence of large, flattened pallets [17]. The scans showed that individual wood blocks housed up to ten *N. norvegica* individuals (Fig. 1A). For *L. pedicellatus* and *T. navalis*, these could not be distinguished from their sizes, and the pallets, upon which the species' identifications of the Teredinidae are based [17], were too small to be detected with CT scan imagery. CT analysis, however, confirmed that the bulk of shipworm populations consisted of small-size animals.

The CT scans also showed that the calcification of the tunnel wall was progressive. Starting at the "front" end (i.e., at the wood surface where the larva begins tunnelling), the lining of the tube thickened at the tunnel opening. The anterior part of the tube was sealed off only after shipworms had explored the piece of wood in all available directions and then stopped boring because space within the block was exhausted. As a consequence, by the end of the monitoring, tunnels were not all lined with a calcareous layer (Fig. 1) and, when present, even if the blind end of tube was sealed off, the lining did not always cover the entire tunnel wall. As a consequence, the space defined by the tube was always smaller than that of the tunnels, this latter being occasionally branched (see Fig. 2). Finally, the model indicated that there is no limitation by the surface of the wood blocks, but that

saturation is due to wood block volume “consumption” by the individuals inhabiting the block.

Wood consumption rates

As shipworms species have different life history traits, wood consumption rates reported here were either individual estimates for the species with the fastest growth or average estimates for the different assemblages of shipworm species present in individual blocks. Individual measurements of the tunnel volume could only be done on blocks from the first two submersion periods. Based on criteria mentioned above, the maximum individual rate ($185 \text{ mm}^3 \text{ ind}^{-1} \text{ day}^{-1}$) of wood removal accounted for *N. norvegica*. On an annual basis, this means that this shipworm species would consume 300 times more wood than what has been reported for wood-boring bivalves from the deep sea [23]. Model fitting allows for assessment of an average wood removal rate $19 \text{ mm}^3 \text{ ind}^{-1} \text{ day}^{-1}$ for the observed shipworm assemblages. Mean consumption of the wood blocks by the shipworm populations within this period increased from 2.1 ± 0.7 to $19.1 \pm 12.0\%$. The dispersion of the estimates suggests both the high variability in the level of infestation of the blocks and also variability in the specific composition of the shipworm assemblages. This type of estimation could be performed more accurately using repeated, higher frequency measures on the same pieces of wood remaining submerged in situ between CT scans. Insofar as the planks are not overcrowded, this approach would permit monitoring wood consumption of the same individuals over time.

After 21 weeks, the resolution of the scanning images was too low to effectively resolve, count and reconstruct individual volumes of the smaller tunnels. In addition, over time, extreme entanglements developed as the tunnel networks densified, further complicating the identification of individual tunnel trajectories. This trend also meant that even if measures had been possible for the longer exposure times, this would probably not have altered significantly the rate of wood removal since the amount available had already become limiting.

Extent of wood consumption by shipworms

Determining the rate at which wood is consumed is a first step to determining the extent shipworms contribute to wood decay at sea. Some gross estimates of the impact of shipworms on wood destruction exist; these have been made from the assessment of the contribution of shipworm tubes to the cross-sectional area of trunks [18] or from mass loss of pre-weighed wood blocks [16, 19]. According to these studies, shipworms could roughly remove 40–50% of the wood initially available. The CT scan provides another means to infer the extent of wood removal by shipworms using tunnel

morphology. In the present experiment, shipworm communities removed, on average, 60.4 ± 3.4 (mean \pm SD) % of the initial volume of the wood blocks. A previous estimate based on gravimetric measurements evaluated this removal as $47.1 \pm 2.1\%$ [19]. As expected, volume losses were significantly correlated with mass losses reported earlier using a gravimetric approach (Fig. 5). However, comparison with the line $x=y$ shows that the regression coefficient between the two variables was significantly less than 1 ($p < 0.0005$) and the y intercept significantly higher than 0 ($p = 0.0025$). Differences between tomographic and gravimetric estimates probably result from multiple factors: the low resolution of the CT scan images that prevented the detection of small wood losses due to recent and/or unsuccessful shipworm attacks, the activities of wood decomposers especially when colonization begins and, also from the weighing of wood blocks that included the weight of the tubes, shells, pallets and body mass, which would make a relatively more important contribution as the size of the shipworms and the degree of wood infestation increased. Nonetheless, overall, compared to simplistic gravimetric measurements, the CT scans led to a reappraisal by nearly 28% of the extent of wood degradation by natural shipworms communities.

Using CT imaging for the description of marine wood-borers

An important technical obstacle during these analyses was the resolution of the images relative to the size range of the biological structures created by the shipworms both in early and late stages of infestation. Recent improvements in CT instruments, such as Micro X-ray CT which can resolve

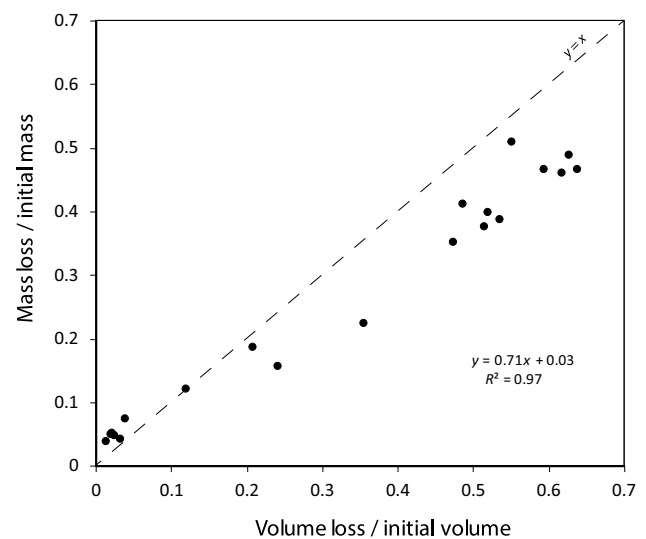


Fig. 5 Wood block removal by shipworms. Correlation between volume losses by CT scan and mass losses of individual pine wood blocks exposed to sea

features on the order of a few dozens of micrometers [33] could improve the identification and measurement of ROIs, but its use for improving the description of a species assemblage remains untested. Indeed, the pallets of *L. pedicellatus* and *Teredo navalis* resemble each other morphologically so even with better resolution observing differences between the periostracum sheaths that cover the pallets' blades while they remain embedded in the wooden blocks will remain challenging with this method. Regardless of the acquisition system, the image processing will be improved if the number of shipworms in the wood sample is relatively small. This could be controlled by reducing the surface area exposed to the sea water with a physical barrier (e.g., bark intact or wood blocks partially coated with a plastic or epoxy treatment).

The second challenge encountered was the difficulty encountered distinguishing automatically air pockets and dry wood matter. Standard rendering models were not adequate and this required defining manually on each image slice the ROIs to calculate the volume of different types of objects. This could be improved by developing automated image analysis for future work in open software packages (e.g., ImageJ, R or SciLab) to develop customized parameters suitable for the structures involved. Nonetheless, despite these drawbacks, our results on wood losses in terms of volume can now be used to parameterize different models, from bulk to individual based models, including stochasticity, for the colonization and consumption of wood by shipworms in different modern and historical contexts.

Conclusion

It is now possible to better represent how different shipworm assemblages could produce estimates of overall wood decay rates. On the basis of our initial modelling, a stochastic model can be built that estimates the variabilities in wood losses expected when processes of colonization and tunnelling are not synchronized, and then individual-based approach could be applied to understand how the morphological, behavioural and demographic characteristics of particular shipworm species interact with the types and geometries of wood materials available in marine environments.

Acknowledgements F. Charles expressly thanks Dr. Michel Gras for the organization and Mr. Régis Truillet for the realization of CT examinations of the wood blocks at the St. Pierre Clinic in Perpignan. We are also grateful to Joseph Garrigue, curator of the Réserve Naturelle Nationale de la Forêt de la Massane for sharing his expert knowledge of the river. This work was supported by the EC2CO (Écosphère Continentale et Côtière) national program of the CNRS-INSU, as part of the DRIL (Dynamique et Réactivité des Interfaces Littorales) topics, under the title: De la forêt à la Mer: Transfert et recyclage du bois mort sur la marge continentale méditerranéenne. JC-G was supported by the "Laboratoire d'Excellence" LabexMER (ANR-10-LABX-19) and

co-funded by a Grant from the French government under the program "Investissements d'Avenir".

References

- Perkins EJ (1974) Decomposition of litter in the marine environment. In: Dickinson CH, Pugh GJF (eds) Biology of plant litter decomposition. Academic Press, London, pp 683–722
- Maser C, Sedell JR (1994) From the forest to the sea: the ecology of wood in streams, rivers, estuaries, and oceans. St. Lucie Press, Delray Beach
- Hendy IW (2012) Habitat creation for animals by teredinid bivalves in Indonesian mangrove ecosystems. Dissertation, University of Portsmouth, UK
- Yücel M, Galand PE, Fagervold SK, Contreira-Pereira L, Le Bris N (2013) Sulfide production and consumption in degrading wood in the marine environment. *Chemosphere* 90:403–409
- Charles F, Coston-Guarini J, Lantoine F, Guarini JM, Yücel M (2014) Ecogeochemical fate of coarse organic particles in the sediments of the Rhone River prodelta. *Est Coast Shelf Sci* 141:97–103
- Clapp WF, Kenk R (1963) Marine borers. An annotated bibliography. Office of Naval Research, Department of the Navy, ACR-74, Washington, DC, p 1136
- Björndal CG, Nilsson T (2008) Reburial of shipwrecks in marine sediments: a long-term study on wood degradation. *J Archaeol Sci* 35:862–872
- Atwood WG, Johnson AA (1924) Marine structures, their deterioration and preservation: report of the committee on marine piling investigations of the Division of Engineering and Industrial Research of the National Research Council. National Research Council (US). Division of Engineering and Industrial Research, National research council, Washington, DC, p 534
- King AJ, Cragg SM, Li Y, Dymond J, Guille MJ, Bowles DJ, Bruce NC, Graham IA, McQueen-Mason SJ (2010) Molecular insight into lignocellulose digestion by a marine isopod in the absence of gut microbes. *Proc Natl Acad Sci USA* 107:5345–5350
- Betcher MA, Fung JM, Han AW, O'Connor R, Seronay R, Concepcion GP, Distel DL, Haygood MG (2012) Microbial distribution and abundance in the digestive system of five shipworm species (Bivalvia: Teredinidae). *PLoS One* 7(9):e45309
- Lechene CP, Luyten Y, McMahan G, Distel DL (2007) Quantitative imaging of nitrogen fixation by individual bacteria within animal cells. *Science* 317:1563–1566
- O'Connor RM, Fung JM, Sharp KH, Benner JS, McClung C, Cushing S, Lamkin ER, Fomenkov AI, Henrissat B, Londer YY, Scholz MB, Posfa J, Malfatti S, Susannah G, Tringe SG, Woyke T, Malmstrom RR, Coleman-Derr D, Altamia MA, Dedrick S, Kaluziak ST, Haygood MG, Distel DL (2014) Gill bacteria enable a novel digestive strategy in a wood feeding mollusk. *Proc Natl Acad Sci USA* 111:E5096–E5104
- Cragg SM, Beckham GT, Bruce NC, Bugg TDH, Distel DL, Dupree P, Green Etxabe A, Goodell BS, Jellison J, McGeehan JE, McQueen-Mason SJ, Schnorr K, Walton PH, Watts JEM, Zimmer M (2015) Lignocellulose degradation mechanisms across the tree of life. *Curr Opin Chem Biol* 29:108–119
- McIntosh H, de Nys R, Whalan S (2012) Shipworms as a model for competition and coexistence in specialized habitats. *Mar Ecol Prog Ser* 461:95–105
- McClain C, Barry J (2014) Beta-diversity on deep-sea wood falls reflects gradients in energy availability. *Biol Lett* 10:20140129
- Nishimoto A, Haga T, Asakura A, Shirayama Y (2015) An experimental approach for understanding the process of wood

- fragmentation by marine wood borers in shallow temperate waters. *Mar Ecol Prog Ser* 538:53–65
17. Turner RD (1966) A survey and illustrated catalogue of the Teredinidae (Mollusca: Bivalvia). The museum of comparative zoology. Harvard University, Cambridge
 18. Robertson AI, Daniel PA (1989) Decomposition and the annual flux of detritus from fallen timber in tropical mangrove forests. *Limnol Oceanogr* 34:640–646
 19. Charles F, Coston-Guarini J, Guarini JM, Fanfard S (2016) Wood decay at sea. *J Sea Res* 114:22–25
 20. Crisp DJ, Jones LWG, Watson W (1953) Use of stereoscopy for examining shipworm infestation in vivo. *Nature* 172:408–409
 21. Haderlie EC, Mellor JC (1973) Settlement, growth rates and depth preference of the shipworm *Bankia setacea* (Tryon) in Monterey Bay. *Veliger* 15:265–286
 22. Mann R, Gallager SM (1985) Growth, morphometry and biochemical composition of the wood boring molluscs *Teredo navalis* L., *Bankia gouldi* (Bartsch), and *Nototeredo knoxi* (Bartsch) (Bivalvia: Teredinidae). *J Exp Mar Biol Ecol* 85:229–251
 23. Amon DJ, Sykes D, Ahmed F, Copley JT, Kemp KM, Tyler PA, Young CM, Glover AG (2015) Seeing in the dark: ecosystem functions of the wood-boring genus, *Xylophaga* revealed by micro-computed-tomography. *Front Mar Sci* 2:10. <https://doi.org/10.3389/fmars.2015.00010>
 24. Eriksen AM, Gregory D (2016) Degradation of archaeological remains by shipworm. *Conserv Manag Archaeol Sites* 18:30–39
 25. Nelder JA, Mead R (1965) A simplex method for function minimization. *Comp J* 7:308–313
 26. Scheltema RS (1971) Dispersal of phytoplanktonic shipworm larvae (Bivalvia: Teredinidae) over long distances by ocean currents. *Mar Biol* 11:5–11
 27. Fanfard S (2016) “Resource community” relationship: case of marine benthic invertebrate communities exploiting coarse debris derived from terrestrial plants (in French). Ph.D. Dissertation, Pierre and Marie Curie University Paris 6, France
 28. Borges LM, Merckelbach LM, Sampaio I, Cragg SM (2014) Diversity, environmental requirements, and biogeography of bivalve wood-borers (Teredinidae) in European coastal waters. *Front Zool* 11:1–13
 29. Roch F (1940) Die Teredinidae des Mittelmeeres. *Thalassia* 4:1–147
 30. Isham LB, Tierney JQ (1953) Some aspects of the larval development and metamorphosis of *Teredo (Lyrodus) pedicellata* de Quatrefages. *Bull Mar Sci Gulf Caribbean* 2:574–589
 31. Calloway CB, Turner RD (1988) Brooding in the Teredinidae (Mollusca: Bivalvia). In: Thompson MF, Nagabhushanam R (eds) *Marine biodeterioration: advanced techniques applicable to the Indian Ocean*. Oxford & IBH Publishing, New Delhi, pp 215–226
 32. Strathmann R, Strathmann MF (1982) The relationship between adult size and brooding in marine invertebrates. *Am Nat* 119:91–101
 33. Paulus MJ, Gleason SS, Kennel SJ, Hunsicker PR, Johnson DK (2000) High resolution X-ray computed tomography: an emerging tool for small animal cancer research. *Neoplasia* 2:62–70