



**HAL**  
open science

# The thermal dust emission in N158–N159–N160 (LMC) star-forming complex mapped by Spitzer, Herschel and LABOCA

M. Galametz, S. Hony, F. Galliano, S. Madden, M. Albrecht, C. Bot, D. Cormier, C. W Engelbracht, Y. Fukui, F. Israel, et al.

► **To cite this version:**

M. Galametz, S. Hony, F. Galliano, S. Madden, M. Albrecht, et al.. The thermal dust emission in N158–N159–N160 (LMC) star-forming complex mapped by Spitzer, Herschel and LABOCA. *Monthly Notices of the Royal Astronomical Society*, 2013, 431 (2), pp.1596-1617. 10.1093/mnras/stt280 . hal-02105573

**HAL Id: hal-02105573**

**<https://hal.science/hal-02105573>**

Submitted on 12 Jan 2022

**HAL** is a multi-disciplinary open access archive for the deposit and dissemination of scientific research documents, whether they are published or not. The documents may come from teaching and research institutions in France or abroad, or from public or private research centers.

L'archive ouverte pluridisciplinaire **HAL**, est destinée au dépôt et à la diffusion de documents scientifiques de niveau recherche, publiés ou non, émanant des établissements d'enseignement et de recherche français ou étrangers, des laboratoires publics ou privés.



Distributed under a Creative Commons Attribution 4.0 International License

# The thermal dust emission in N158–N159–N160 (LMC) star-forming complex mapped by *Spitzer*, *Herschel* and LABOCA

M. Galametz,<sup>1\*</sup> S. Hony,<sup>2</sup> F. Galliano,<sup>2</sup> S. C. Madden,<sup>2</sup> M. Albrecht,<sup>3</sup> C. Bot,<sup>4</sup>  
D. Cormier,<sup>2</sup> C. Engelbracht,<sup>5,6</sup> Y. Fukui,<sup>7</sup> F. P. Israel,<sup>8</sup> A. Kawamura,<sup>9</sup>  
V. Lebouteiller,<sup>2</sup> A. Li,<sup>10</sup> M. Meixner,<sup>11,12</sup> K. Misselt,<sup>5</sup> E. Montiel,<sup>5</sup> K. Okumura,<sup>2</sup>  
P. Panuzzo,<sup>2</sup> J. Roman-Duval,<sup>11</sup> M. Rubio,<sup>12</sup> M. Sauvage,<sup>2</sup> J. P. Seale,<sup>11</sup> M. Sewiło<sup>13,14</sup>  
and J. Th. van Loon<sup>15</sup>

<sup>1</sup>*Institute of Astronomy, University of Cambridge, Madingley Road, Cambridge CB3 0HA, UK*

<sup>2</sup>*Laboratoire AIM, CEA, Université Paris Diderot, IRFU/Service d'Astrophysique, Bat. 709, 91191 Gif-sur-Yvette, France*

<sup>3</sup>*Argelander-Institut für Astronomie, Auf dem Hügel 71, D-53121 Bonn, Germany*

<sup>4</sup>*Observatoire astronomique de Strasbourg, Université de Strasbourg, CNRS, UMR 7550, 11 rue de l'Université, F-67000 Strasbourg, France*

<sup>5</sup>*Steward Observatory, University of Arizona, Tucson, AZ 85721, USA*

<sup>6</sup>*Raytheon Company, 1151 East Hermans Road, Tucson, AZ 85756, USA*

<sup>7</sup>*Department of Astrophysics, Nagoya University, Chikusa-ku, Nagoya 464-8602, Japan*

<sup>8</sup>*Sterrewacht Leiden, Leiden University, PO Box 9513, NL-2300 RA Leiden, the Netherlands*

<sup>9</sup>*National Astronomical Observatory of Japan, 2-21-1, Osawa, Mitaka, Tokyo, 181-8588, Japan*

<sup>10</sup>*Department of Physics and Astronomy, University of Missouri, 314 Physics Building, Columbia, MO 65211, USA*

<sup>11</sup>*Space Telescope Science Institute, 3700 San Martin Drive, Baltimore, MD 21218, USA*

<sup>12</sup>*Departamento de Astronomía, Universidad de Chile, Casilla 36-D, Santiago, Chile*

<sup>13</sup>*Department of Physics and Astronomy, Johns Hopkins University, Homewood Campus, Baltimore, MD 21218, USA*

<sup>14</sup>*Space Science Institute, 4750 Walnut St., Suite 205, Boulder, CO 80301, USA*

<sup>15</sup>*School of Physical & Geographical Sciences, Lennard-Jones Laboratories, Keele University, Staffordshire ST5 5BG, UK*

Accepted 2013 February 12. Received 2013 February 12; in original form 2013 January 15

## ABSTRACT

Low-metallicity galaxies exhibit different properties of the interstellar medium (ISM) compared to nearby spiral galaxies. Obtaining a resolved inventory of the various gas and dust components of massive star-forming regions and diffuse ISM is necessary to understand how those differences are driven. We present a study of the infrared/submillimetre (submm) emission of the massive star-forming complex N158–N159–N160 located in the Large Magellanic Cloud (LMC). Combining observations from the *Spitzer* Space Telescope (3.6–70  $\mu\text{m}$ ), the *Herschel* Space Observatory (100–500  $\mu\text{m}$ ) and Large APEX Bolometer Camera (LABOCA) (on Atacama Pathfinder EXperiment, 870  $\mu\text{m}$ ) allows us to work at the best angular resolution available now for an extragalactic source (a few parsec for the LMC). We observe a remarkably good correlation between the *Herschel* Spectral and Photometric Imaging Receiver (SPIRE) and LABOCA emission and resolve the low surface brightnesses emission. We use the *Spitzer* and *Herschel* data to perform a resolved spectral energy distribution (SED) modelling of the complex. Using modified blackbodies, we derive an average ‘effective’ emissivity index of the cold dust component  $\beta_c$  of 1.47 across the complex. If  $\beta_c$  is fixed to 1.5, we find an average temperature of  $\sim 27$  K (maximum of  $\sim 32$  K in N160). We also apply the Galliano et al. SED modelling technique (using amorphous carbon to model carbon dust) to derive maps of the star formation rate, the grain temperature, the mean starlight intensity, the fraction of polycyclic aromatic hydrocarbons (PAH) or the dust mass surface density of the region. We observe that the PAH fraction strongly decreases in the H II regions we study. This decrease coincides with peaks in the mean radiation field intensity map. The dust surface densities follow the

\*E-mail: mgalamet@ast.cam.ac.uk

far-infrared distribution, with a total dust mass of  $2.1 \times 10^4 M_{\odot}$  (2.8 times less than if carbon dust was modelled by standard graphite grains) in the resolved elements we model. We also find a non-negligible amount of dust in the region called ‘N159 South’, a molecular cloud that does not show massive star formation. We also investigate the drivers of the *Herschel*/PACS (Photodetector Array Camera and Spectrometer) and SPIRE submm colours and find that the submm ratios correlate strongly with the radiation field intensity and with the near and mid-IR surface brightnesses equally well. Comparing our dust map to H I and CO observations in N159, we then investigate variations in the gas-to-dust mass ratio (G/D) and the CO-to-H<sub>2</sub> conversion factor  $X_{\text{CO}}$ . A mean value of  $G/D \sim 356$  is derived when using  $X_{\text{CO}} = 7 \times 10^{20} \text{ H}_2 \text{ cm}^{-2} (\text{K km s}^{-1})^{-1}$ . If a constant G/D across N159 is assumed, we derive a  $X_{\text{CO}}$  conversion factor of  $5.4 \times 10^{20} \text{ H}_2 \text{ cm}^{-2} (\text{K km s}^{-1})^{-1}$ . We finally model individual regions to analyse variations in the SED shape across the complex and the 870  $\mu\text{m}$  emission in more details. No measurable submm excess emission at 870  $\mu\text{m}$  seems to be detected in these regions.

**Key words:** ISM: dust, extinction – galaxies: dwarf – galaxies: ISM – submillimetre: galaxies.

## 1 INTRODUCTION

As potential templates of primordial environments, low-metallicity galaxies are keystones to understand how galaxies evolve through cosmic time. Studying the interstellar medium (ISM) of low-metallicity galaxies is a necessary step to get a handle on the interplay between star formation and the ISM under conditions characteristic of the early universe. Low-metallicity galaxies also have quite different infrared (IR) spectral energy distributions (SEDs) than solar or metal-rich environments. For instance, their aromatic features are diminished compared to dustier galaxies (Madden et al. 2006; Engelbracht et al. 2008). The paucity of aromatic features is usually attributed to the hardness of the radiation field in low-metallicity environments, destructive processes such as supernova-driven shocks effects (Galliano et al. 2003, 2005) or delayed injection of carbon dust by asymptotic giant branch (AGB) stars (Dwek 1998; Galliano, Dwek & Chaniai 2008) in dwarf galaxies. More relevant to the present study, the SEDs of low-metallicity galaxies often exhibit a flattening of their submillimetre (submm) slope or a submm excess (Böttner, Klein & Heithausen 2003; Galliano et al. 2003, 2005; Bendo et al. 2006; Marleau et al. 2006; Galametz et al. 2009, 2011), namely a higher emission beyond 500  $\mu\text{m}$  than that extrapolated from IR observations and standard dust properties [Milky Way (MW) dust for instance]. The origin of this excess is still highly debated. These results highlight the importance of a complete coverage of the thermal dust emission of low-metallicity objects to get a handle on the overall dust population distribution and properties in these environments. Combining gas and dust tracers will also allow us to understand how the matter cycles and the star formation processes evolve with galaxy properties.

The Large Magellanic Cloud (LMC) is our nearest low-metallicity neighbour galaxy ( $\sim 50 \text{ kpc}$ ; Feast 1999), well studied at all wavelengths. This proximity enables us to study in detail the physical processes at work in the ISM of the galaxy and to individually resolve its bright star-forming regions. These structures can unbiasedly be isolated due to the almost face-on orientation ( $23\text{--}37^\circ$ ; Subramanian & Subramaniam 2012). Furthermore, the low interstellar extinction along the line of sight facilitates the interpretation of the physical conditions of these star-forming regions compared to Galactic studies strongly affected by this extinction. Thus, the irregular morphology and low metallicity of the LMC ( $\sim 1/2 Z_{\odot}$ ; Pagel 2003) make it a perfect laboratory to study the

evolution in the physical properties of the ISM of galaxies and the influence of metal enrichment on their star-forming activity.

Before the *Spitzer Space Telescope* (*Spitzer*) observations, the infrared studies on the LMC suffered from a lack of wavelength coverage or spatial resolution to quantify crucial physical parameters of the ISM properties such as the equilibrium temperature of the big grains, the spatial distribution of the dust grain populations or the interstellar radiation field. A study of the extended infrared emission in the ISM of the LMC was performed by Bernard et al. (2008) as part of the *Spitzer* Legacy Program SAGE (Surveying the Agents of a Galaxy’s Evolution; Meixner et al. 2006) project using *Spitzer* observations. They found disparities between the overall shape of the SED of the LMC and that of the MW, namely a different mid-infrared (MIR) shape. They also found departures from the linear correlation between the FIR optical depth and the gas column density. Using *Spitzer* FIR spectra ( $\lambda = 52\text{--}93 \mu\text{m}$ ), the studies of van Loon et al. (2010b) also allowed comparisons of compact sources in the LMC and its neighbour, the Small Magellanic Cloud (SMC), that has an even lower metallicity. Their results indicate that while the dust mass differs in proportion to metallicity, the oxygen mass seems to differ less. The photoelectric effect is indistinguishably efficient to heat the gas in both clouds. The SMC finally presents evidence of reduced shielding and reduced cooling.

At submm wavelengths, the LMC was observed by Aguirre et al. (2003) with the TopHat instrument, a balloon-borne telescope (Silverberg et al. 2003) from 470  $\mu\text{m}$  to 1.2 mm. They constrain the FIR regime with Diffuse Infrared Background Experiment (DIRBE) observations at 100, 140 and 240  $\mu\text{m}$  and estimated an average dust temperature for the LMC of  $T = 25.0 \pm 1.8 \text{ K}$ . Using DIRBE and *IRAS* Sky Survey Atlas (ISSA) observations, Sakon et al. (2006) found that the submm emission power-law index (often referred to as  $\beta$ ) is smaller in the LMC than in the MW and that the 140 and 240  $\mu\text{m}$  fluxes seem to deviate from the model predictions, in particular on the periphery of supergiant shells. This excess was modelled by a very cold dust component with temperatures  $< 9 \text{ K}$ , even if their lack of submm constraints prevented them to unbiasedly conclude that cold dust was the explanation for the excess. Using revised DIRBE, *Wilkinson Microwave Anisotropy Probe* and *COBE* maps, Israel et al. (2010) construct the global SED of the LMC to confirm a pronounced excess emission at millimetre and submm wavelengths, i.e. more emission than expected from a submm slope with  $\beta = 2$ . Different hypotheses for this global excess are tested in Bot et al. (2010a), Bot et al. (2010b), Galliano et al. (2011) (both rule out for

instance the ‘very cold dust’ hypothesis) or Planck Collaboration (2011) (that test the ‘spinning dust’ hypothesis).

We more specifically focus the present study on the N158–N159–N160 complex, a group of H II regions ( $\sim 400$  pc from North to South) located in the LMC,  $\sim 500$  pc south of the 30 Doradus (30Dor) massive star-forming region (catalogued by Henize 1956). The complex is intensively observed in IR, H I or CO. We have obtained observations of the complex with the Large APEX Bolometer Camera (LABOCA) instrument at  $870 \mu\text{m}$ , probing the coldest phases of dust at a resolution of 19 arcsec. We note that this analysis presents the first study of LABOCA observation in the LMC. We refer to Bot et al. (2010a) for a detailed analysis of LABOCA observations of giant molecular clouds (GMCs) in the south-west region of the SMC. In addition to LABOCA data, the *Herschel Space Observatory* (*Herschel*) now allows us to probe the thermal dust emission with a coverage of the SED from  $70 \mu\text{m}$  up to  $500 \mu\text{m}$ , thus to sample the IR peak and the submm slope of nearby galaxies. The whole LMC has been mapped with *Herschel* as part of the HERITAGE project (HERschel Inventory of The Agents of Galaxy Evolution; Meixner et al. 2010, Meixner et al., in preparation). The good resolution of the instruments on-board *Herschel* favours the exploration of the local properties of the ISM with a resolution of *Herschel*/SPIRE (Spectral and Photometric Imaging Receiver) at  $500 \mu\text{m}$  similar to that of *Spitzer*/MIPS (Multiband Imaging Photometer)  $160 \mu\text{m}$  [full width at half-maximum (FWHM) of the point spread function (PSF) = 36 arcsec], leading, for the LMC, to ISM resolution elements of  $\sim 9$  pc at SPIRE  $500 \mu\text{m}$ .

This paper thus presents a study of the IR to submm thermal emission of star-forming regions in various evolutionary states at the best resolution available now. This allows us to investigate how properties and physical conditions observed on large scales are physically linked to specific environments on a more resolved scale. In Section 2, we describe the N158–N159–N160 complex and the observations and data reduction of the LABOCA, *Spitzer* and *Herschel* data. We present the SED modelling techniques we apply to the *Spitzer* and *Herschel* data on resolved scales in Section 3. In

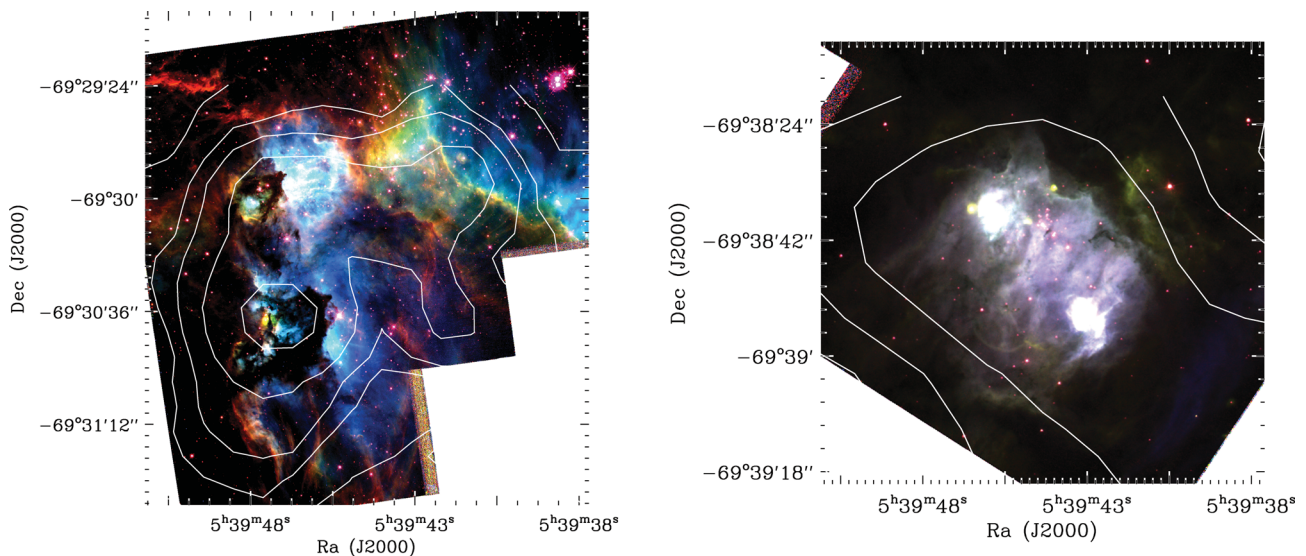
Section 4, we analyse the results of our modelling, namely the distribution of the dust temperatures, the mean stellar radiation field intensities, the fraction of polycyclic aromatic hydrocarbons (PAH) or the star formation rates (SFRs). We also study the dependence of submm colours on various parameters and compare our dust mass map with the available gas tracers for the N159 region. A SED modelling of individual regions across the complex including the  $870 \mu\text{m}$  data in the fitting procedure is described in Section 5. We summarize the main conclusions of the analysis in Section 6.

## 2 A MULTI-WAVELENGTH DATA SET

### 2.1 The complex

The N158–N159–N160 complex ( $\sim 400$  pc from North to South) is located in the LMC at  $\sim 500$  pc south of the 30Dor complex, the most massive star-forming region of the Local Group (Kennicutt & Hodge 1986). Fig. 1 shows three-colour compositions of the two regions N158 and N160 produced with images taken by the Wide Field Planetary Camera 2 (WFPC2) on board the *Hubble Space Telescope* (*HST*). Data are retrieved from the Hubble Legacy Archive (<http://hla.stsci.edu/>, Program IDs: 11807 and 8247 for N158 and N160, respectively). We overlay LABOCA  $870 \mu\text{m}$  contours on both images for comparison between the spatial resolutions. The *HST*/WFPC2 observations of N158, N159 and N160 are discussed in details in Fleener et al. (2010), Heydari-Malayeri et al. (1999) and Heydari-Malayeri et al. (2002), respectively.

*N158* – This H II region (Fig. 1, left) possesses an elongated structure in the N–S direction. Two OB associations were first discovered in the region by Lucke & Hodge (1970) who catalogued stellar associations across the whole LMC. One is associated with the southern part of N158, and one with the north superbubble. Several studies have shown that this superbubble is dominated by a young stellar population of 2 to 6 Myr (Testor & Niemela 1998; Dunne, Points & Chu 2001).



**Figure 1.** The N158–N160–N159 complex is located in the LMC ( $\sim 500$  pc south of 30Dor). We show here three-colour compositions of the two regions N158 and N160 produced with images taken with *HST*. For N158 (left), we use a combination of the narrow-band filters F502N/[O III] (blue), F656N/H $\alpha$  (green) and F673N/[S II] (red). For N160 (right), we use a composition of the narrow-band filters F502N/[O III] (blue), F656N/H $\alpha$  (green) and F487N/H $\beta$  (red). LABOCA  $870 \mu\text{m}$  contours are overlaid on both images. Contours are given for 0.018, 0.06, 0.09, 0.15 and 0.3  $\text{Jy beam}^{-1}$  on the left image, and 0.15 and 0.3  $\text{Jy beam}^{-1}$  on the right image. North is up, and east is towards left.

*N159* – Observations of N159 in the *K* band by Gatley et al. (1981) led to the discovery of the first extragalactic protostar. The stellar content of sub-structures of N159 was analysed in more detail by Deharveng, Caplan & Lombard (1992) at optical wavelengths and Meynadier et al. (2004) using *JHK* photometry. N159 presents characteristics of on-going star formation activity such as protostars, masers, young massive stars as well as High-Excitation Blobs (HEB), namely nebulae with turbulent media and strong stellar winds interacting with the ambient ionized gas. The Kuiper Airborne Observatory (KAO) has been used to probe the complex at far-infrared (FIR) wavelengths for the first time (Werner et al. 1978; Jones et al. 1986). Later, Jones et al. (2005) used *Spitzer*/IRAC (InfraRed Array Camera) observations to follow the protostars in N159 and constrain the nature of the upper end of the initial mass function (IMF) in the LMC.

*N160* – As in N159, massive star formation is well evolved in N160 (Fig. 1, right), with parent clouds that have mostly been dissipated. The region is associated with H II regions, young stellar clusters and water masers (Lazendic et al. 2002; Oliveira et al. 2006). Using *JHK* photometry, Nakajima et al. (2005) showed that of the 11 optical stellar clusters and associations detected in the N159/N160 complex (ages listed by Bica et al. 1996), one has an age superior to 10 Myr and belongs to N160, the rest are younger than 10 Myr, with three clusters showing populations younger than 3 Myr. We refer to Carlson et al. (2012) for a study of the physical properties and evolutionary stages of young stellar objects in N160 and to van Loon et al. (2010a) for a detailed study of FIR fine-structure cooling lines of compact sources in the three H II regions.

The N158–N159–N160 complex belongs to the largest molecular cloud complex of the LMC called ‘the molecular ridge’ and accounts for ~30 per cent of the total molecular mass of the galaxy (Mizuno et al. 2001). Several analyses have suggested a dissipated sequential cluster formation within N158, N160 and N159 as well as a large-scale sequential cluster formation over the entire complex (Bolatto et al. 2000; Nakajima et al. 2005) and more globally from the 30Dor complex to the southern region of N159 where the large southward CO ridge of 30Dor begins (Cohen et al. 1988; Fukui et al. 1999). Near-infrared (NIR) to FIR observations with Two Micron All Sky Survey and *Spitzer* highlighted the paucity of star formation across the ridge, with a star formation activity distributed in lower luminosity regions than in the 30Dor complex (Indebetouw et al. 2008). Several studies have suggested alternative scenarios to the standard self-propagating star formation to explain this trend, for instance that the sequential star formation could be induced in bow-shocks formed at the leading edge of the LMC (de Boer et al. 1998).

The N159 H II region harbours two GMCs, known as ‘N159 East’ (N159E) and ‘N159 West’ (N159W) labelled in Fig. 2. Chen et al. (2009) suggest that the current star formation in the N159E is probably triggered by H II regions in expansion in the molecular cloud, while the massive stars of N159W are forming spontaneously. Another GMC was observed in the south of N159 (N159S). Performing a comparative study between [C II], CO and FIR observations, Israel et al. (1996) find that the clouds N160 and N159S are two opposite extremes with respect to N159 (East and West), with molecular gas in N160 more photo-dissociated than in N159. N159S shows a much lower level of star formation than N159W and N159E (Bolatto et al. 2000; Rantakyro et al. 2005), with only a few very faint diffuse H II regions and no OB associations (Chen et al. 2010). The detection of candidates for Herbig Ae/Be stars suggests that the cluster formation could have just be-

gun in N159S (Nakajima et al. 2005). The atomic and molecular gas distributions across the complex are discussed in more details in Section 4.5.

## 2.2 LABOCA observations and data reduction

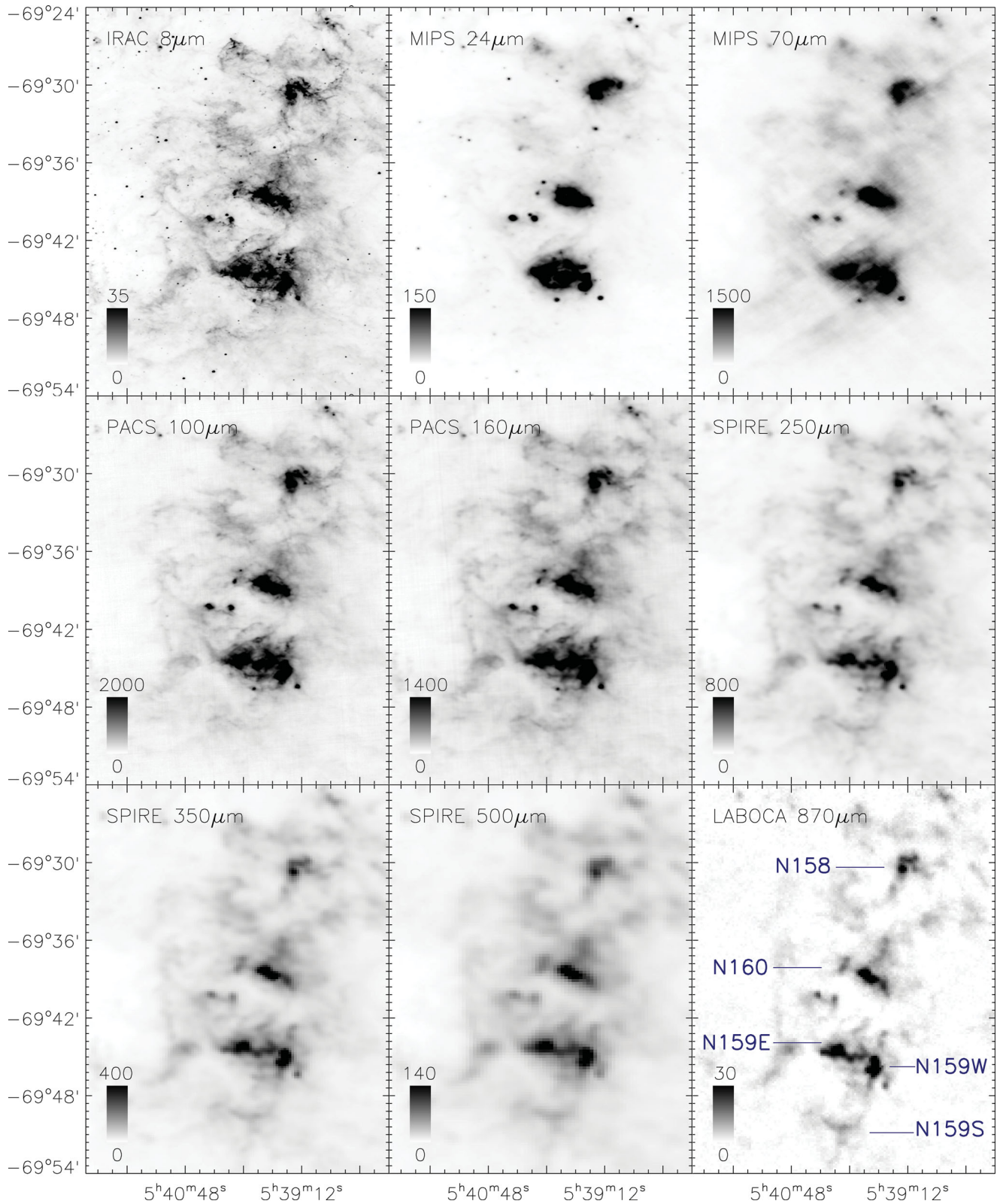
The full region of N158, N159 and N160 was mapped with the LABOCA instrument operating at 870  $\mu\text{m}$  and installed on the Cassegrain cabin of the Atacama Pathfinder EXperiment (APEX) telescope in the Chajnantor site in Chile’s Atacama desert. LABOCA is a bolometer array of 295 channels with a field of view of the full array of 11.4 arcmin. The FWHM of its PSF is 19.2 arcsec  $\pm$  0.3. Detectors of LABOCA are positioned with a double beam channel separation (36 arcsec) and the field of view is thus under-sampled. The mapping was carried out with a raster of spiral pattern to obtain a homogenous fully sampled map. A total of 35.5 h of observations were obtained in 2008 August (Program ID: O-081.F-9329A-2008 – Principal Investigator: Sacha Hony). Calibration was performed through the observations of Mars and secondary calibrators: PMNJ0403-8100, PKS0537-441, B13134, V883-ORI, N2071IR and VY-CMa. The atmospheric attenuation was determined via skydips every hour.<sup>1</sup>

The data reduction was performed with the BOA reduction package (BOlometer Array Analysis Software).<sup>2</sup> The main steps of the reduction of the time-ordered data stream of each channel and scan are: flat fielding, calibration, opacity correction, dead or noisy channels removal, removal of the correlated noise on the global array as well as correlated noise induced by the coupled electronics of the detectors (amplifier boxes or cables), flagging of stationary points or data taken outside reasonable telescope scanning velocity and acceleration limits, <sup>3</sup>He temperature drift correction, median baseline removal and despiking. Individual reduced scans are then co-added.

The presence of very bright structures often leads to negative artefacts on their surrounding. These structures are ‘created’ numerically during the correlation noise or median baseline steps. It is possible to reduce these artefacts using an iterative process during the data reduction. Once data are calibrated, we use our reduced image to create a ‘source model’ by isolating the pixels superior to a given signal-to-noise ratio (5 for the first iterations and decreasing progressively to 2). The model grows automatically to avoid isolated pixels in the masks. We subtract the source model from the data and rerun the reduction pipeline. We add the model at the end of the new reduction to obtain a new map. This map is used to build a new model, input for the following iteration. The process is repeated until the reduction converges. Those iterations lead to a significant retrieval of faint extended emission around the bright structures. Weight maps are derived during the final mapping step from which we derive rms and signal-to-noise ratio maps. The final 45  $\times$  35 arcmin<sup>2</sup> LABOCA image has a pixel size of 9.1 arcsec, with a final rms of 7.8 mJy beam<sup>-1</sup>.

<sup>1</sup> See <http://www.apex-telescope.org/bolometer/laboca/calibration/> for details on the calibration and archive tables of sky opacities and calibration factors.

<sup>2</sup> BOA was developed at MPIfR (Max-Planck-Institut für Radio Astronomy, Bonn, Germany), AIfA (Argelander-Institut für Astronomie, Bonn, Germany), AIRUB (Astronomisches Institut der Ruhr-Universität, Bochum, Germany) and IAS (Institut d’Astrophysique Spatiale, Orsay, France).



**Figure 2.** Images of the N158–N159–N160 star-forming complex observed from 8 to 870  $\mu\text{m}$ . North is up, east is left and coordinates (RA, Dec.) are given in equinox J2000. We provide the intensity scale in  $\text{MJy sr}^{-1}$  for each panel.

### 2.3 *Herschel* data

We obtained *Herschel* data for the N158–N159–N160 complex from the HERITAGE project, a programme dedicated to the observations

of the two Magellanic Clouds and a part of the Magellanic Bridge. We refer to Meixner et al. (2010) and the HERITAGE overview of Meixner et al. (in preparation) for a detailed description of the observing strategy of the HERITAGE project and the data reduction of

the data. We provide a short summary here. The LMC was mapped in two bands with Photodetector Array Camera and Spectrometer (PACS; Poglitsch et al. 2010) at 100 and 160  $\mu\text{m}$ , with respective FWHM of the PSF of  $\sim 7.7$  arcsec and  $\sim 12$  arcsec. Data are processed in HIPE 7.0 (*Herschel* Interactive Processing Environment) from Level 0 to Level 1 following the standard pipeline described in the PACS data reduction guide. Several steps of baseline subtraction (to take  $1/\sqrt{f}$  noise and drifts with time into account) and deglitching (to correct for jumps caused by cosmic ray hits) are then applied to the data. PACS 100 and 160  $\mu\text{m}$  timelines are finally mapped using the PhotProject HIPE procedure. The LMC was also observed with *Herschel*/SPIRE (Griffin et al. 2010) at 250, 350 and 500  $\mu\text{m}$ , with respective FWHMs of their PSFs of 18 arcsec, 25 arcsec and 36 arcsec. Data were reduced in HIPE 7.0, including additional routines to subtract the background, adjust the astrometry, apply deglitching steps, remove residuals from temperature drifts or mask discrepant data. We expect residual foreground emission as pointed out by Bernard et al. (2008). Using the H I data cube of the LMC restricted to velocity ranges matching those of the Galaxy, Galliano et al. (2011) have quantified this contamination to contribute to  $\sim 1$  per cent of the IR power, i.e. smaller than *Herschel* flux uncertainties. We thus consider the foreground contamination to be negligible in this study.

## 2.4 Spitzer data

The *Spitzer* observations were performed as part of the SAGE project (Surveying the Agents of a Galaxy’s Evolution) using both instruments IRAC (Fazio et al. 2004) and MIPS (Rieke et al. 2004). The IRAC bands cover 3.6, 4.5, 5.8 and 8  $\mu\text{m}$  with FWHMs of the PSFs  $< 2$  arcsec. The MIPS bands cover 24, 70 and 160  $\mu\text{m}$  with a FWHM of the PSFs of 6 arcsec, 18 arcsec and 40 arcsec, respectively. A description of the observing strategy and data reduction can be found in Meixner et al. (2006). We also refer to Jones et al. (2005) for a very detailed overview of the IRAC observations of N159 and its various components. Because of their lower resolution (40 arcsec) compared to the *Herschel*/PACS 160  $\mu\text{m}$  maps (12 arcsec), we do not use the MIPS 160  $\mu\text{m}$  maps in this study. Meixner et al. (in preparation) indicate a good agreement of the MIPS and PACS calibrations in the linear range of MIPS.

## 2.5 Variation of the thermal dust emission with wavelength

We present a multi-wavelength composition of the N158–N159–N160 region in Fig. 2, with, from top to bottom IRAC 8  $\mu\text{m}$ , MIPS 24 and 70  $\mu\text{m}$ , PACS 100 and 160  $\mu\text{m}$ , the three SPIRE bands (250, 350 and 500  $\mu\text{m}$ ) and the LABOCA map at 870  $\mu\text{m}$ . This figure shows how the thermal dust emission is evolving with wavelength. The 8  $\mu\text{m}$  observation mostly traces the aromatic feature emission from PAHs. The MIPS 24  $\mu\text{m}$  emission is more compact than that of the other bands. Tracing the hot dust, the 24  $\mu\text{m}$  emission is indeed confined to the compact star-forming sites. The cool dust (10–40 K) is now traced by the *Herschel* PACS and SPIRE observations. The LABOCA observations are finally probing for the first time the coldest phases of dust at a resolution of 19 arcsec (4.6 pc for the LMC).

We clearly resolve the emission of the bright star-forming regions of the complex with LABOCA at 870  $\mu\text{m}$ , but also detect and resolve the diffuse emission at low surface brightnesses. The distribution of the 870  $\mu\text{m}$  emission is spatially coherent with that of the SPIRE maps, both in the H II regions and in the diffuse medium. To allow spatial comparison between the 870  $\mu\text{m}$  maps and the IRAC 8  $\mu\text{m}$

map, predominantly tracing PAHs, we convolve the IRAC 8  $\mu\text{m}$  map to the LABOCA resolution using the low-resolution kernel created by G. Aniano from the PSFs of IRAC and LABOCA<sup>3</sup> and observe a spatial coincidence between the 8  $\mu\text{m}$  map and the 870  $\mu\text{m}$  contours (Fig. 3) already observed by Haas, Klaas & Bianchi (2002) for a wide range of galaxy types. On one hand, this correlation suggests that the PAH excitation could be caused by a widespread distribution of stellar FUV-emitters and not only linked with star formation (Whaley et al. 2009). On the other hand, we expect the 870  $\mu\text{m}$  emission, namely the cold dust emission, to predominantly originate from largely shielded interiors of molecular clouds. Their surfaces are known to produce the PAH features (Sauvage, Tuffs & Popescu 2005), which could explain their association with the 870  $\mu\text{m}$  emission.

We finally note the peculiar behaviour of the southern region of N159 (N159S in Fig. 2). As observed in Figs 2 and 3, the peak of emission moves from 8 to 870  $\mu\text{m}$ , with an offset of 2.7 arcmin towards the west for the 870  $\mu\text{m}$  emission. We will see further in this paper that the peak of the 870  $\mu\text{m}$  emission (which also dominates the emission at SPIRE wavelengths) spatially coincides with the molecular gas reservoir usually referred to as ‘N159 South’ (N159S). This region was indeed observed in CO (Bolatto et al. 2001; Mizuno et al. 2010) and is the brightest [C I] source of N159 (Bolatto et al. 2000). We provide details on previous observations of gas tracers (H I, CO etc.) in the complex in Section 4.5.

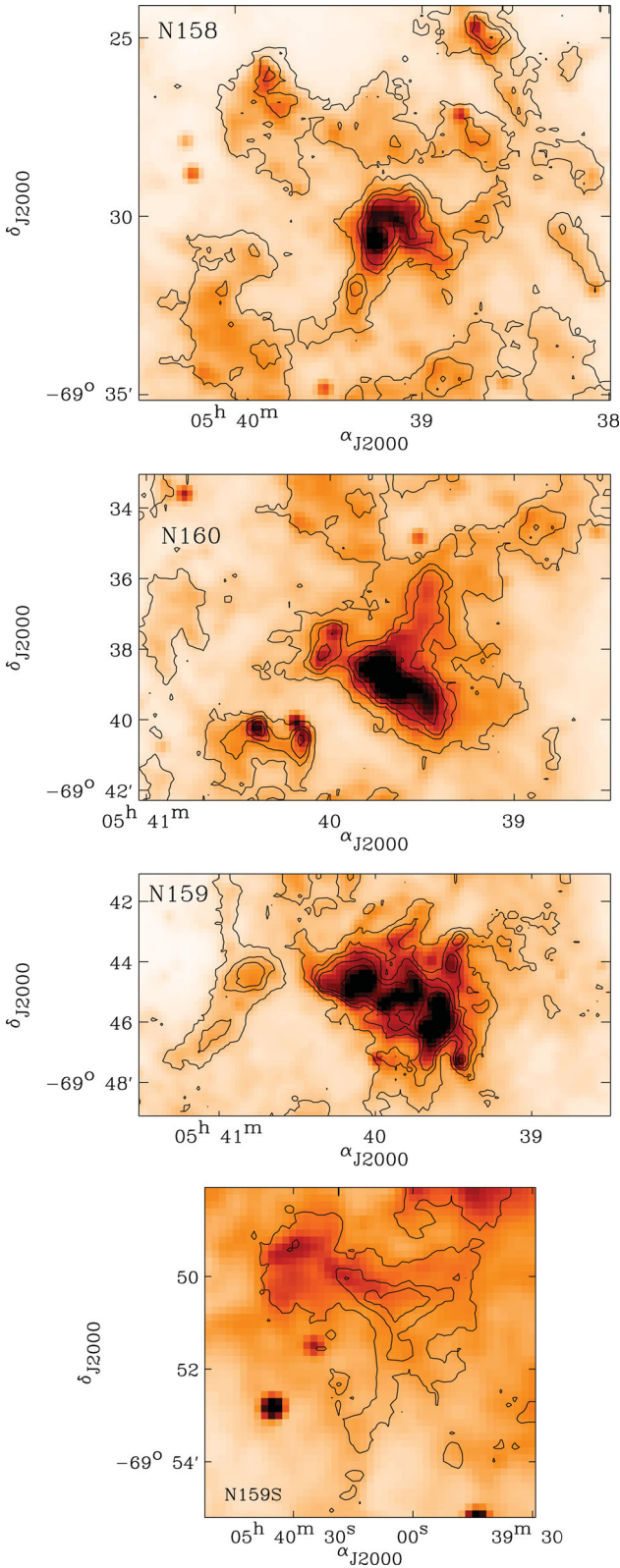
## 2.6 Convolution and background subtraction

We convolve the IRAC, MIPS, PACS and SPIRE 250 and 350  $\mu\text{m}$  maps to the lowest resolution available, namely that of SPIRE 500  $\mu\text{m}$  (FWHM: 36 arcsec). We used the convolution kernels developed by Aniano et al. (2011), which are rotationally symmetric and optimized to avoid high-frequency numerical noise (induced by the filtering steps when one works in the frequency domain). The LABOCA 870  $\mu\text{m}$  map is convolved to the SPIRE 500  $\mu\text{m}$  resolution using the low-resolution kernel created by G. Aniano from the PSFs of both SPIRE 500  $\mu\text{m}$  and LABOCA (see Section 2.5). For each image, we estimate the background by masking the emission linked with the complex and fitting the distribution of the remaining pixels by a Gaussian. The peak value of this Gaussian is used as a background value per pixel and subtracted from the maps. In the following study, we restrict ourselves to resolved elements with a signal-to-noise ratio superior to  $1\sigma$  in the SPIRE bands.

## 3 A RESOLVED SED MODELLING

We use data from 3.6 to 500  $\mu\text{m}$  to obtain maps of the dust properties within the star-forming complex. Because the data reduction of the LABOCA data might still lead to the removal of some of the faintest diffuse emission, we do not use the 870  $\mu\text{m}$  map as a constraint for the resolved modelling. We derive average cold temperatures on a resolved basis using a two-temperature (two modified blackbodies) fitting procedure. We then apply a more realistic model (Galliano et al. 2011) in order to investigate the distribution of the SFR, radiation field properties or dust properties (mass, PAH fraction) across the star-forming complex. We describe the two resolved SED fitting procedures in this section and analyse the maps of the physical parameters we obtained in Section 4. In Section 5, we perform a SED

<sup>3</sup> <http://www.astro.princeton.edu/~ganiano/Kernels.html> for kernels and details on their construction.



**Figure 3.** Details on the IR/submm emission in the regions. LABOCA 870  $\mu\text{m}$  contours are overlaid on the IRAC 8  $\mu\text{m}$  observation with, from top row to bottom row N158, N160, N159 and N159S. The IRAC 8  $\mu\text{m}$  map is convolved to the LABOCA resolution. Contours are given for 0.018, 0.06, 0.09, 0.15 and 0.3  $\text{Jy beam}^{-1}$ . North is up, east is towards left.

modelling of 24 individual regions across the complex (same model) to derive integrated properties on those regions and investigate the 870  $\mu\text{m}$  thermal emission separately.

### 3.1 Modified blackbody fitting

If we assume that dust grains are in thermal equilibrium with the radiation field, we can obtain a simple estimate of the cold dust temperature across the complex by fitting a modified blackbody (MBB) to the dust thermal emission. It is important to keep in mind that in reality, each resolution element contains dust grains with varied properties along the line of sight. The temperatures derived using this method should thus be considered as luminosity-weighted average values. We choose to fit our 24 to 500  $\mu\text{m}$  data with a two-temperature (warm+cold) model. This two-MBB fitting is a minimum requirement to account for the contribution of warm dust to the MIR emission (and estimate the contribution of warm dust and single-photon-heating to the 70  $\mu\text{m}$  emission) and avoid an overestimation of the cold dust temperatures.

We fit our data with a model of the form:

$$L_\nu(\lambda, T_w, T_c, \beta_c) = A_w \lambda^{-2} B_\nu(\lambda, T_w) + A_c \lambda^{-\beta_c} B_\nu(\lambda, T_c) \quad (1)$$

with  $T_w$  and  $T_c$  the temperature of the warm and cold component,  $\beta_c$  the emissivity index of the cold component and  $B_\nu$  the Planck function. The  $A_w$  and  $A_c$  are scaling coefficients that account for the dust masses of each component. The emissivity index of the warm dust component is fixed to 2, a standard approximation of the opacity in the Li & Draine (2001) dust models. We convolve the model with the instrumental spectral responses of the different cameras to derive the expected photometry. The fit is performed using the IDL function `MPCURVEFIT` (Markwardt 2009, Levenberg–Marquardt least-squares fit). We take the uncertainties on flux measurements into account to weight the data during the fitting procedure (normal  $1/\text{error}^2$  weighting).

*Choice of emissivity* – In order to derive an estimate of the emissivity index value of the complex, we first let the emissivity index of the cold dust component vary ( $\beta_c$  free) and perform the two-MBB fitting for each ISM resolved elements. We obtain an average emissivity index of  $1.47 \pm 0.17$  across the complex, consistent with the results derived for the whole LMC by Planck Collaboration (2011) ( $\sim 1.5$ ) or for a strip in the LMC using *Herschel* Science Demonstration Phase data by Gordon et al. (2010). We thus decide to fix the effective emissivity index to 1.5 and re-derive the temperature map. Fixing the emissivity index value prevents biases linked with (1) temperature-emissivity anti-correlation due to measurement uncertainties, (2) temperature mixing along the line of sight contributing to a bias in the derived ‘effective emissivity index’ (see Juvela & Ysard 2012; Galametz et al. 2012, for discussions on these issues).

*Error estimates* – We perform Monte Carlo simulations in order to quantify the uncertainties on dust temperatures driven by flux errors of the resolved fluxes. Error maps are a combination in quadrature of the uncertainty maps derived during the data reduction (mapping, pointing) and uncertainties in the absolute calibration (15 per cent for the SPIRE bands that are the most crucial for dust mass estimates), the latter being the dominant source of uncertainties. We generate 20 sets of modified constraints with fluxes randomly varying within their error bars and following a normal distribution around the nominal value and run the model for each set. Resolved uncertainties can thus be derived using the standard deviations of each distribution. Since the absolute calibration is correlated for SPIRE bands, the three SPIRE measurements move consistently in each set.



### 3.2 Realistic dust properties fitting

We also apply the phenomenological SED fitting procedure of Galliano et al. (2011) to our 3.6 to 500  $\mu\text{m}$  data in order to derive the resolved total infrared (TIR) luminosities, dust properties and radiation field intensity estimates across the region. Their approach is similar to that of Draine et al. (2007), except for the starlight intensity distribution. In both models, as suggested by Dale et al. (2001), the distribution of starlight intensities per unit dust mass is approximated by a power law (of index  $\alpha$ ). In the Draine et al. (2007) models though, a significant fraction of the dust mass is assumed to be heated by starlight with a single intensity  $U_{\text{min}}$  (‘diffuse ISM’ component). This model leads to better resolved fits (lower  $\chi^2$  values) for nearby spirals (see Aniano et al. 2012) but does not seem to correctly reproduce LMC observations (Galliano et al. 2011). We choose the approach of Galliano et al. (2011) in order to allow flexibility of the model at submm wavelengths and account for possible variations of the effective emissivity or the presence of colder dust.

We consider the dust size distribution and composition to be uniform across the complex and that sources of IR emission are old stars and dust (PAHs, carbon grains and silicates). The stellar contribution to the MIR is modelled using a library of stellar spectra previously synthesized using the stellar evolution code PEGASE (Floc & Rocca-Volmerange 1997). The stellar population is assumed to have undergone an instantaneous burst 5 Gyr ago (initial solar metallicity, Salpeter IMF). We do not have an MIR spectrum to properly constrain the PAH composition. We thus choose to fix the ionized PAH-to-neutral PAH ratio ( $f_{\text{PAH}+}$ ), an additional parameter of the Galliano et al. (2011) model, to 0.5 in order to limit the number of free parameters of the model.

The free parameters of our model are thus:

- (i) the total mass of dust ( $M_{\text{dust}}$ ),
- (ii) the PAH-to-dust mass ratio ( $f_{\text{PAH}}$ ),
- (iii) the index describing the fraction of dust exposed to a given intensity ( $\alpha$ ),
- (iv) the minimum heating intensity ( $U_{\text{min}}$ ),
- (v) the range of starlight intensities ( $\Delta U$ ),
- (vi) the mass of old stars (scaling of our stellar spectra).

We note that  $U = 1$  corresponds to the intensity of the solar neighbourhood ( $2.2 \times 10^{-5} \text{ W m}^{-2}$ ). For the rest of the paper,  $U_{\text{min}} + \Delta U$  will be referred as ‘ $U_{\text{max}}$ ’. The PAH fraction  $f_{\text{PAH}}$  is normalized to the average Galactic value (4.6 per cent; Li & Draine 2001). As pointed out in Galliano et al. (2011), the mass of old stars is poorly constrained by the IRAC bands and is only used to subtract the stellar continuum to the MIR bands. No balance is made between this parameter and the starlight intensity. Errors on the physical parameters are derived using the same Monte Carlo technique described in Section 3.1.

*Amorphous carbon to model carbon dust* – Two different approaches are compared in Galliano et al. (2011) as far as the modelling of carbon dust is concerned: the ‘standard model’ that uses the Zubko, Dwek & Arendt (2004) Galactic grain composition and graphite grains, or the ‘AC model’ that uses amorphous carbons (Zubko, Krelowski & Wegner 1996) in lieu of graphite. Carbon constitutes a major fraction of the grains in galaxies, especially in the circumstellar dust of carbon stars. However, the exact form of carbon dust is still rather unclear. Many SED models use graphite to describe the interstellar carbon dust as first suggested by Mathis, Rumpl & Nordsieck (1977). Graphite, indeed, has well-known physical properties, which make it easy to model, and is

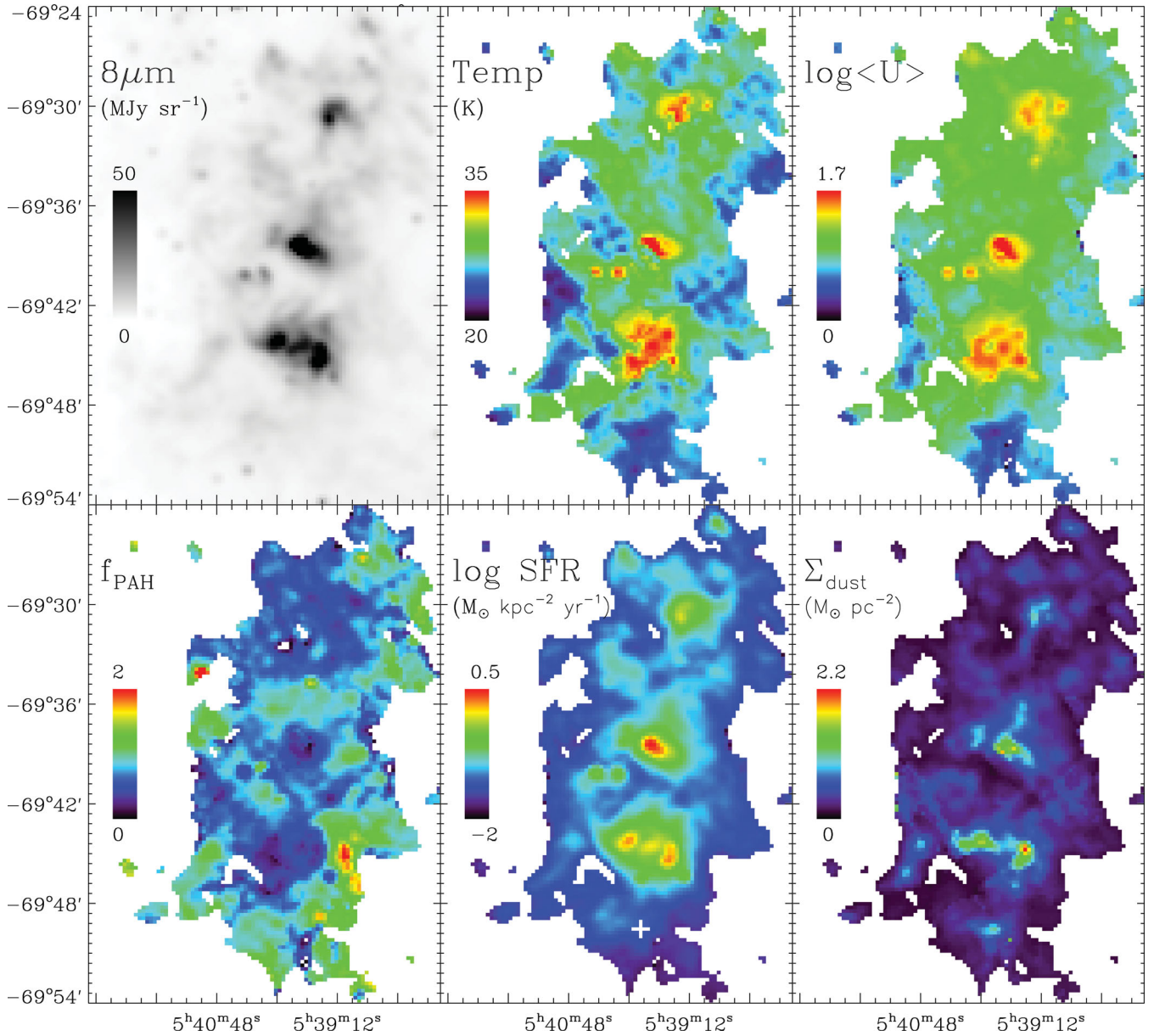
in good agreement with the observed (Galactic) extinction and polarization (Draine & Lee 1984). However, observational evidence challenges the graphite theory (at least the pure mono crystalline graphite theory), among which are (1) variations in the 2175  $\text{\AA}$  profile not explained by changes in graphite grain size (Draine & Malhotra 1993), (2) a graphite broad-band emission feature near 33  $\mu\text{m}$  less strong (weaker and narrower) than expected in global models (e.g. Draine et al. 2007), (3) an erosion of carbon dust in shocks not reproducible in the case of graphite grains. Indeed, Welty et al. (2002) or Serra Díaz-Cano & Jones (2008) show that graphite is not expected to survive as such in the ISM due to erosion and irradiation in shock waves and suggest that interstellar hydrogenated amorphous carbons could be the most probable form of carbon material, their erosion being more efficient than graphite in shocks. We will also see further in the paper that using the ‘standard model’ leads to dust masses inconsistent with the dust-to-gas mass ratio expected for the complex. The use of AC to model carbon dust generally leads to a decrease of the mass of large grains compared to that required by the ‘standard model’ to account for the same emission (see Section 4.5.1 for explanations). Considering the average emissivity index of our region ( $\beta \sim 1.5$ ), we favour the ‘AC’ approach to model the resolved SEDs across the complex.

## 4 RESULTS AND ANALYSIS

In this section, we describe the various maps obtained directly or indirectly from our resolved SED models and analyse how their distributions correlate. Fig. 4 shows the maps of the parameters we derive (temperature and mean radiation field intensity, PAH fraction, SFR and dust mass surface density). The 8  $\mu\text{m}$  image is shown on the upper left panel for comparison. In Section 4.4, we also investigate how submm colours evolve with the ISM conditions (heating sources, radiation field intensities). Finally, we analyse the dust surface density map and how it relates to the distribution of the different gas phases in the complex, and more particularly in the N159 region in Section 4.5.

### 4.1 Temperatures and mean radiation field intensities

We show the final cold temperature (i.e. temperature of the cold MBB) map obtained using our resolved two-MBB fitting technique in Fig. 4 (upper middle panel). The temperatures peak at the locations of star-forming regions where dust is expected to be warmer. N160 shows the highest cold dust temperature, with a maximum of  $\sim 40$  K while the median temperature of the N158–N159–N160 complex is  $26.9^{+2.3}$  K (28.2 if we restrict the analysis to ISM elements with a  $3\sigma$  detection in the SPIRE bands). Based on observations made with the TopHat telescope combined with DIRBE data (100, 140, and 240  $\mu\text{m}$ , 42 arcmin, Aguirre et al. (2003) derived temperatures of  $25^{+1.8}$  K and  $26.2^{+2.3}$  K for the LMC and 30Dor, using  $\beta = 1.33^{+0.07}$  and  $1.5^{+0.08}$ , respectively. From *Spitzer* data (thus no data above 160  $\mu\text{m}$ ) and the same emissivity values, Bernard et al. (2008) obtained a colder temperature of 21.4 K for the LMC and 23 K for the 30Dor region. Our values are thus close to the values derived for the 30Dor region by Aguirre et al. (2003). We note, however, that different methods were used to derive the temperatures, making a direct comparison difficult. The N159S region is finally the coldest region of the whole complex, with a temperature  $\sim 22$  K. This supports the argument that massive stars may still be at infancy and deeply embedded in the circumstellar material in this particular region.



**Figure 4.** Results of our resolved SED fittings: Upper left:  $8\ \mu\text{m}$  map convolved to the SPIRE  $500\ \mu\text{m}$  resolution (units of  $\text{MJy sr}^{-1}$ ). Upper middle: cold dust temperature (units in kelvins). Upper right: mean starlight heating intensity ( $U = 1$  corresponds to the intensity of the solar neighbourhood). Lower left: PAH-to-total dust mass ratio normalized to the Galactic value (4.6 per cent). Lower middle: SFR (units in  $M_{\odot} \text{ kpc}^{-2} \text{ yr}^{-1}$  – log scale). The white cross indicates the N159S region. Lower right: dust surface density (in  $M_{\odot} \text{ pc}^{-2}$ ). For all images, north is up, east is left and coordinates (RA, Dec.) are given in equinox J2000.

In order to investigate more precisely the distribution of radiation field intensities across the region, we derive a map of the mass-weighted mean starlight heating intensity ( $U$ ) (Draine & Li 2007) that develops into

$$\langle U \rangle = \begin{cases} \frac{\Delta U}{\ln(1 + \Delta U/U_{\min})} & \text{if } \alpha = 1 \\ U_{\min} \frac{\ln(1 + \Delta U/U_{\min})}{\Delta U / (U_{\min} + \Delta U)} & \text{if } \alpha = 2 \\ \frac{1-\alpha}{2-\alpha} \frac{(U_{\min} + \Delta U)^{2-\alpha} - U_{\min}^{2-\alpha}}{(U_{\min} + \Delta U)^{1-\alpha} - U_{\min}^{1-\alpha}} & \text{if } \alpha \neq 1 \ \& \ \alpha \neq 2 \end{cases} \quad (2)$$

with  $\Delta U$  the range of starlight intensities,  $U_{\min}$  the minimum heating intensity and  $\alpha$  the index describing the fraction of dust exposed to a given intensity, all three obtained from the resolved Galliano et al.

(2011) modelling procedure.  $U = 1$  corresponds to the intensity of the solar neighbourhood ( $2.2 \times 10^{-5} \text{ W m}^{-2}$ ).

We show the mean starlight heating intensity map in Fig. 4 (upper right panel). Since dust grains are heated by the interstellar radiation field, we obtain a similar distribution between dust temperatures and radiation field intensities. Maxima in  $\langle U \rangle$  appear close to H II regions where the starlight heating the dust is expected to be much more intense than the overall starlight illuminating the complex. The averaged intensity in our ISM elements is  $\langle U \rangle = 8.6$ . This average increases to 11.7 when we restrict the calculation for resolved ISM elements that have a  $3\sigma$  detection in the SPIRE bands. We note that Meixner et al. (2010) derived an average value  $\langle U \rangle = 7.6$  for a strip across the LMC (so including more quiescent regions) using the same model as that applied in our study. Finally, N159S shows the

lowest  $\langle U \rangle$  ( $\sim 1.8$ ) of the complex. This is consistent with the cold temperatures we observe in this region. This region thus appears to be shielded from the strong starlight heating the N159 H II region.

#### 4.2 PAH fraction

Fig. 4 (lower left panel) shows how the PAH-to-total dust mass ratio  $f_{\text{PAH}}$  is distributed across the star-forming complex. We remind the reader that in the modelling,  $f_{\text{PAH}}$  is normalized to the Galactic value  $f_{\text{PAH, MW}} = 4.6$  per cent. The average value of  $f_{\text{PAH}}$  across the region is driven by the ISM outside the H II regions themselves (median  $f_{\text{PAH}} = 0.7^{+0.3}$ ). However, we observe variations in the PAH fraction. Peaks of the  $f_{\text{PAH}}$  (in red) are located in low surface brightness regions and are probably artefacts due to the very low dust mass of those regions. We observe a strong decrease of  $f_{\text{PAH}}$  in the three star-forming regions as well as low PAH fractions in two compact knots located at the south-east side of N160. All these regions correspond to peaks in the radiation field intensities (Fig. 4,  $\langle U \rangle$  panel) as well as strong radio emission (as we will see later in Section 5). This depression of the PAH fraction by intense radiation fields was also studied in detail by Sandstrom et al. (2010) in the SMC. These results are consistent with the fact that PAHs are known to be destroyed in strong H II regions (Madden et al. 2006; Lebouteiller et al. 2007). PAHs are also smaller on average in low-metallicity galaxies, which could also favour their destruction (Sandstrom et al. 2012a). Low-metallicity environments often show harder interstellar radiation fields extending over larger size scales. This effect is attributed to the hardness of the radiation field and/or to a lower dust attenuation in low-metallicity ISM which consequently leads to a larger mean-free path length of the ionizing photons. Moreover, the fragmented structure and clumpiness of the ISM in low-metallicity galaxies allow UV light to penetrate deeper in metal-poor molecular clouds, favouring grain destruction. We note that should the radiation field be harder than the interstellar radiation field of Mathis, Mezger & Panagia (1983) used in our model, the PAH fraction we estimate could be overestimated.

Dwek (2005) and Galliano et al. (2008) have suggested that the low fraction of PAHs in metal-poor environments could also be due to a delayed injection of carbon dust into the ISM by AGB stars in the final phase of their evolution. Using near-IR *JHK* photometry in the N159 nebula, Meynadier et al. (2004) distinguished a young ( $\sim 3$  Myr) and an old ( $\sim 1$ – $10$  Gyr) stellar population, even if they could not exclude that both populations might be spatially unrelated. Based on the absence of red supergiants in N159 (stars that should normally be observed in the cluster if the present stellar population was at least 10 Myr old), Jones et al. (2005) concluded that most of the star formation must have taken place recently and that N159 might not be older than 1–2 Myr. A sequential cluster formation from N160 to N159S has been observed by Nakajima et al. (2005), using observations of Herbig Ae/Be clusters. This supports a slightly longer star formation activity for the N160 region ( $\sim 10$ – $30$  Myr). Both regions are nevertheless quite young compared to the time necessary for carbon dust to be injected in the ISM by the stars and thus participate in the formation of PAHs in the clusters. We finally note that recent studies suggest that the rate of AGB-produced PAHs compared to the rate of PAHs formed in the ISM may also change with metallicity (Sandstrom et al. 2012a).

In conclusion, although the obvious anti-correlation between  $f_{\text{PAH}}$  and the radiation field favours the destruction of PAHs as a straight forward explanation for the low PAH fraction we observe, the young age of the clusters could be an additional explanation for the absence of PAH in our three H II regions.

#### 4.3 Star formation rate

Since the total bolometric IR luminosity traces the emission of stellar populations enshrouded in dust cocoons, this quantity is thus very often used to quantify the star formation obscured by dust (Pérez-González et al. 2006; Kennicutt et al. 2009). We first obtain the total IR luminosity map of the complex by integrating the resolved SEDs in a  $\nu - f_\nu$  space:

$$L_{\text{IR}} = \int_8^{1100 \mu\text{m}} L_\nu d\nu. \quad (3)$$

In the SED fitting technique we use, we model the stellar contribution to short wavelengths as a separate component. This contribution is subtracted before performing the integration to only take the thermal emission of dust into account in the calculation. We use the IR-based calibration of Kennicutt (1998) to derive a SFR map of the region:

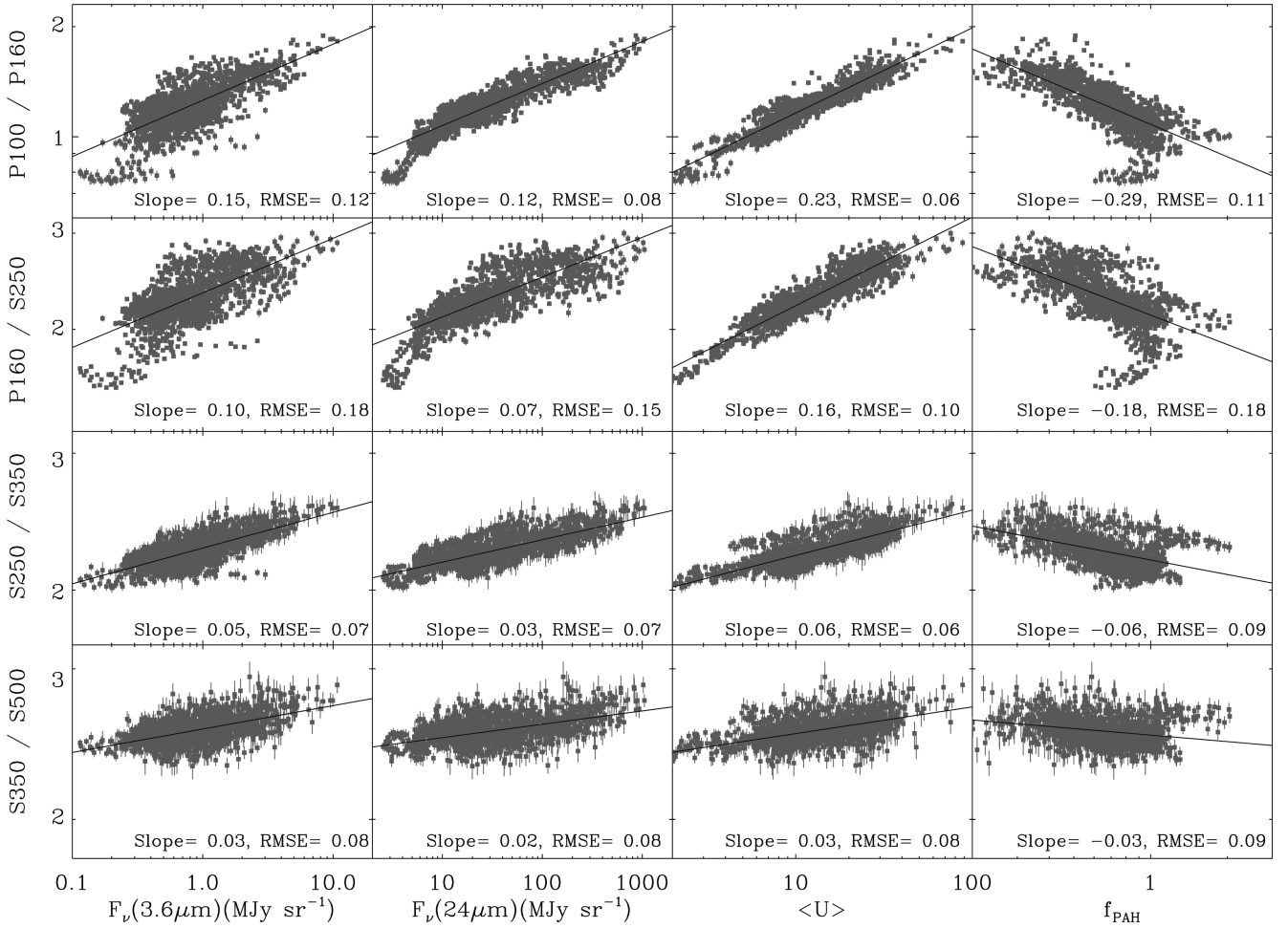
$$\frac{\text{SFR}}{M_\odot \text{ yr}^{-1}} = \frac{L_{\text{FIR}}}{5.8 \times 10^9 L_\odot}. \quad (4)$$

Jones et al. (2005) estimated the integrated luminosity of the N159 complex (integration of the SED up to  $100 \mu\text{m}$  combining *Spitzer* and KAO data). They found that the integrated luminosity was consistent with the observed radio emission, assuming that the H II region was a cluster with a normal IMF. As mentioned in Indebetouw et al. (2008), equation (4) was calibrated for large extragalactic sources. It may be valid for the full star-forming regions such as N159, but the SFR calibration may not be accurate when applied to some of our resolved ISM elements, namely those not properly covering the stellar IMF.

We show the SFR map of the region in units of  $M_\odot \text{ yr}^{-1} \text{ kpc}^{-2}$  (log scale) in Fig. 4 (lower middle panel). We find a median SFR of  $0.06 M_\odot \text{ yr}^{-1} \text{ kpc}^{-2}$  across our modelled region. This average increases to  $0.17 M_\odot \text{ yr}^{-1} \text{ kpc}^{-2}$  when we restrict the calculation for resolved ISM elements that have a  $3\sigma$  detection in the SPIRE bands. This is consistent with the average SFR obtained by Indebetouw et al. (2008) using the  $\text{H}_2$  surface densities and the Schmitt–Kennicutt law ( $0.14 M_\odot \text{ yr}^{-1} \text{ kpc}^{-2}$  for N159/N160 and  $0.11 M_\odot \text{ yr}^{-1} \text{ kpc}^{-2}$  for the southern molecular ridge that includes the complex we are studying). They find that their SFR estimate for N159/N160 corresponds to that derived using the Calzetti (2007) formula (i.e. a calibration from  $\text{H}\alpha$  and  $24 \mu\text{m}$  luminosities) within uncertainties. We note that the SFR we derive varies significantly across the region. Peaks of SFR correspond to our three star-forming regions, with the N160 centre showing the highest SFR of the complex. We indicate the N159S region by a white cross in Fig. 4 (SFR panel). The region does not show massive on-going star formation.

#### 4.4 Submillimetre colours

Bendo et al. (2012) studied *Herschel* colours (i.e. PACS or SPIRE surface brightness ratios) in three nearby galaxies (M81, M83 and NGC 2403) and found that the 70/160 colour was correlated with tracers of the star formation activity (thus that warm dust is primarily heated by the young stellar populations) while SPIRE ratios (250/350 or 350/500) were more strongly correlated with the galacto-centric radius of the galaxies. They concluded that cold dust could be primarily heated by the total stellar population (young stars + old stars). Boquien et al. (2010) and Galametz et al. (2010) studied similar correlations in M33 and NGC 6822, respectively, and showed that these ratios were also strongly correlated with



**Figure 5.** Comparison of PACS and/or SPIRE surface brightness ratios to the  $3.6\ \mu\text{m}$  surface brightnesses, the  $24\ \mu\text{m}$  surface brightnesses, the mean stellar density  $\langle U \rangle$  or the PAH fraction  $f_{\text{PAH}}$ . Black lines show the best-fitting lines, and we provide the slope and the RMSE at the bottom of each panel.

the star formation, traced by the  $24\ \mu\text{m}$  emission for instance. In Section 4.4.1, we thus study the dependence of FIR colours on various parameters, including the mean radiation field intensities  $\langle U \rangle$  and the PAH fraction just derived from our modelling. Moreover, if FIR colours are often used as good proxies for dust temperatures, colour–colour relations can, on the other hand, provide additional information about the dust emissivity wavelength dependence (Nagata et al. 2002; Hibi et al. 2006; Hirashita & Ichikawa 2009). In Section 4.4.2, we analyse SPIRE colours as possible indicators of the cold dust emitting properties.

#### 4.4.1 Dependencies

In order to investigate the drivers of submm colours variations in the N158–N159–N160 complex, we compare in Fig. 5 the PACS and SPIRE surface brightness ratios 100/160, 160/250, 250/350 and 350/500 with

(1) the  $3.6\ \mu\text{m}$  surface brightness: dominated by emission from the old stellar populations, it is known as a good proxy of the stellar mass (see Zhu et al. 2010; Eskew, Zaritsky & Meidt 2012, for recent studies),

(2) the  $24\ \mu\text{m}$  hot dust emission, often used as a good calibrator for star formation (Calzetti 2007; Rieke et al. 2009, among others),

(3) the mean starlight heating intensity  $\langle U \rangle$ . Values of  $U$  have been normalized to that of the MW,

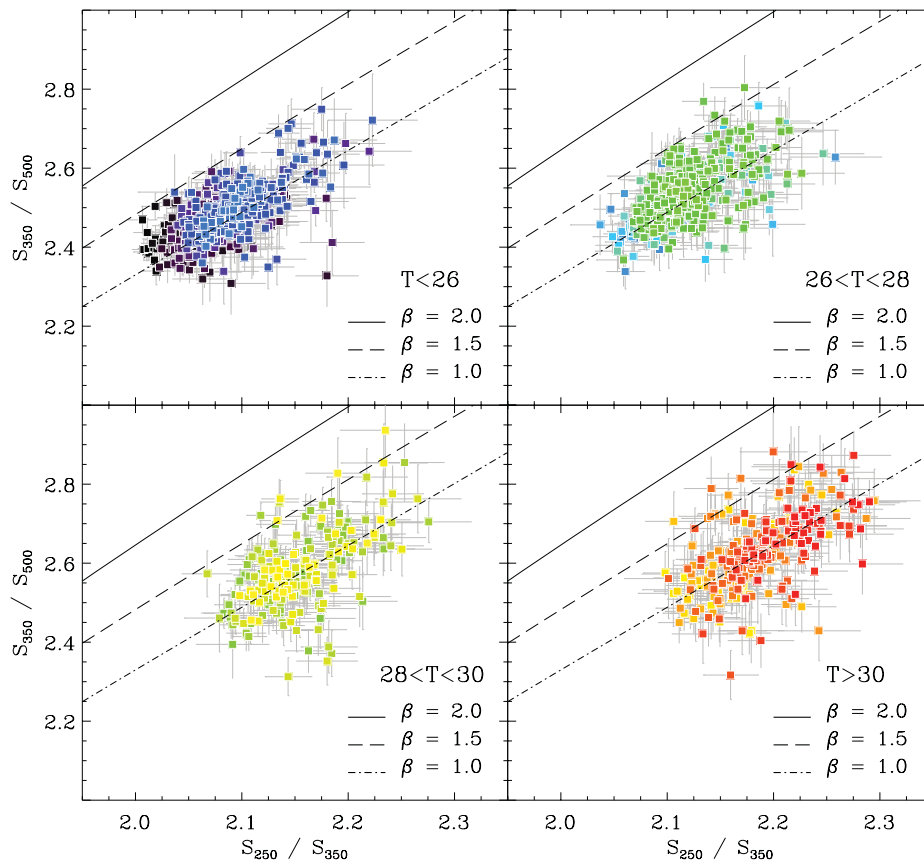
(4) the PAH fraction  $f_{\text{PAH}}$ .

For this section as well as the following, we restrict ourselves to pixels with a  $3\sigma$  detection in the three SPIRE bands. We note that part of the N159S region matches this signal-to-noise ratio criteria. In Fig. 5, we compute the linear regressions from each comparison using an ordinary least-squares regression (function *linfit.pro* of the Astrolibrary of IDL). On each plot, we provide the slope of the relation as well as the root-mean-square error (RMSE) defined as

$$\text{RMSE} = \sqrt{\frac{\sum (O_i - E_i)^2}{n}} \quad (5)$$

with  $O_i$  the observed ratios (or temperature colours),  $E_i$  the ratios estimated from our fitting relations and  $n$  the number of ISM elements.

We observe correlations in all cases, with a very tight relation between the 100-to-160 and 160-to-250 flux density ratios and the mean starlight intensity  $\langle U \rangle$  (lower RMSE for each line). We know that dust grains are heated by the interstellar radiation field and re-emit this energy in the infrared regime so correlation between FIR colours and the radiation field intensity is expected. FIR colours are often used as good proxies of the average dust temperatures, even if FIR ratios using shorter wavelengths than  $100\ \mu\text{m}$



**Figure 6.** Colour–colour plot of the star-forming complex: 350/500 colours are plotted against the 250/350 colour. Squares represent the resolved ISM elements of the star-forming complex (pixel size = 14 arcsec, i.e.  $\sim 4$  pc for the LMC) coded with temperature (temperatures taken from the map presented in Fig. 4). We separate the resolved elements in four panels ( $T < 26$ ,  $26 < T < 28$ ,  $28 < T < 30$  and  $T > 30$ ). For each panel, elements are binned three-by-three for clarity. The lines show the colours obtained from a single-temperature MBB with an emissivity index  $\beta_{\text{singleBB}}$  of 2, 1.5 and 1, from cold temperatures to the left to hot temperature to the right.

(70-to-100 ratio for instance) can be potentially biased by emission from stochastically heated dust grains (Dale et al. 2001; Bernard et al. 2008). Contrary to ratios at shorter wavelengths that show stronger correlations with the  $24 \mu\text{m}$  surface brightnesses, the SPIRE-only ratios follow the 3.6 and  $24 \mu\text{m}$  surface brightnesses equally well. We finally note that the N159S region shows the lowest submm surface brightness ratios of the whole complex, with surface brightness ratios of  $\sim 0.75$  for 100/160,  $\sim 1.58$  for 160/250,  $\sim 2$  for 250/350 and  $\sim 2.35$  for 350/500.

#### 4.4.2 SPIRE colour–colour diagrams

Fig. 6 shows a SPIRE colour–colour diagram of the star-forming complex. We plot the 350-to-500  $\mu\text{m}$  flux density ratios (hereafter 350/500 colour) of our resolved elements as a function of the 250-to-350  $\mu\text{m}$  flux density ratios (hereafter 250/350 colour). In order to investigate variations in the submm colours with temperature, we separate the points in four panels ( $T < 26$ ,  $26 < T < 28$ ,  $28 < T < 30$  and  $T > 30$ ) and code them with temperature, from cold in dark purple to hot in red colours. We use the resolved temperatures  $T_c$  derived using our two-MBB model. The lines show modelled colours obtained from a single-temperature MBB with an emissivity index  $\beta_{\text{singleBB}}$  of 2, 1.5 or 1.

We observe that SPIRE colours are well correlated with each other. Resolved elements with  $T > 30$  (fourth panel) have, on aver-

age, slightly lower 350/500 colours for a given 250/350 colour, so a ‘flatter’ submm slope. This trend agrees with the anti-correlation observed between the emissivity index and the temperature (Dupac et al. 2003; Shetty et al. 2009) but could also result from temperature mixing effects along the line of sight in these elements. Given our error bars, we, however, consider this trend as marginal. We note that the ISM elements showing very low 250/350 colours (black squares) belong to N159S.

As suggested by Fig. 6, a single MBB model with  $\beta_{\text{singleBB}} = 2$  cannot reproduce the colours we observe. In fact, many resolved elements reside around the  $\beta = 1$  model, thus at the very low end of the  $\beta$  values quoted in the literature ( $1 < \beta < 2.5$ ). This cautions the use of single-temperature fits to derive the intrinsic emissivity of the dust grains, those models providing in reality an ‘effective’ emissivity index resulting from the combination of various dust populations at different temperatures.

## 4.5 Dust and gas masses across the complex

### 4.5.1 Dust masses

We show the dust surface density map  $\Sigma_{\text{dust}}$  obtained with the ‘AC model’ in Fig. 4 (lower right panel). The distribution of the dust surface density follows the distribution of the FIR/submm emission. We particularly point at the elongated structure of N159 correlated

with the SPIRE and  $870\ \mu\text{m}$  emission. The total dust mass of the region we modelled is  $\sim 2.1 \times 10^4 M_{\odot}$ , with  $8.5 \times 10^3 M_{\odot}$  within resolved elements fulfilling the  $3\sigma$  SPIRE-band detection.<sup>4</sup> A significant amount of dust is present in N159S, a region whose emission starts to be detected at  $160\ \mu\text{m}$  with PACS (Fig. 2), thus a significant reservoir of cold dust. We refer to Section 5 for an individual SED modelling of N158, N159, N159S and N160 that allows us to derive individual dust masses for these H II regions.

The resolved dust masses we estimate are 2.8 times higher if we use the ‘standard model’ of Galliano et al. (2011), i.e. graphite grains to model carbon dust. This is consistent with the statistical distribution of the resolved dust mass ratio between the ‘AC model’ and the ‘standard model’ they find in a strip across the LMC (median of the distribution at  $\sim 2.6$ ). In fact, the opacity profile of AC is higher than graphite for  $\lambda > 5\ \mu\text{m}$ . This implies that for a fixed starlight intensity, AC will have a lower temperature than graphite, and thus leads to more mass. However, AC has a flatter submm slope (more emissivity in the submm regime<sup>5</sup>), so we are able to fit the same observational constraints with slightly hotter grains but less mass. Indeed, the ‘AC model’ invokes higher starlight intensities (median of  $\langle U \rangle$  across the complex: 8.6 in the ‘AC case’, 4.1 in the ‘standard model’), and thus less dust than graphite to account for the same submm emission. We finally note that the errors on resolved dust masses are of the order of  $\sim 50$  per cent. This will introduce non-negligible uncertainties in our gas-to-dust mass ratio (G/D) estimates (cf. Section 4.5.4).

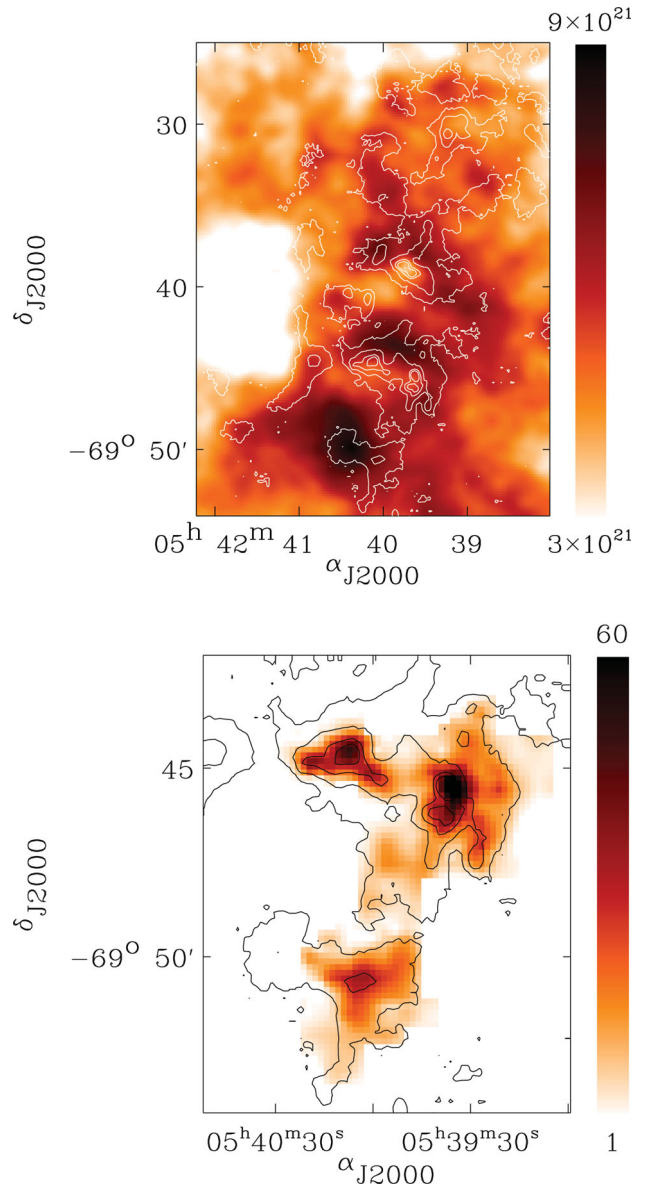
#### 4.5.2 Comparison with the H I distribution

High-resolution maps of the atomic gas reservoir have been built for the complete LMC. The H I data cube used in this section (from Kim et al. 2003) combines data from the Australian Telescope Compact Array (ATCA; Kim et al. 2003) and the Parkes single-dish telescope (Staveley-Smith et al. 2003). The individual channel maps have a velocity resolution of  $1.649\ \text{km s}^{-1}$  and the H I map was obtained integrating the cube over the range  $190 < v_{\text{hel}} < 386\ \text{km s}^{-1}$ , with a resolution of 1 arcmin. We refer to Kim et al. (2003) and Bernard et al. (2008) for further details on the LMC integrated map.

Fig. 7 (top) shows the H I map of the N158–N159–N160 complex, with  $870\ \mu\text{m}$  contours overlaid. The distribution of H I does not match that of the emission in the FIR (both *Spitzer* and *Herschel*) bands across the region. A clear offset is, for instance, observed between N159 and the closest H I peak located further north ( $\sim 1.5$  arcmin). A closer look at the regions indicates that the peaks of the  $870\ \mu\text{m}$  emission of the three regions N158, N160 and N159, as well as the PACS and SPIRE peaks, reside in fact in H I holes. This could be a signature of the H I to H<sub>2</sub> transition already observed in LMC or Galactic clouds (Wong et al. 2009; Lee et al. 2012, Taton et al., in preparation, among others), with H I being converted into H<sub>2</sub> either by thermal or gravitational instabilities or by shock compressions. Contrary to the other regions of the complex, the

<sup>4</sup> We note that estimating this total dust mass on a resolved scale (resolved masses added together) allows us to probe the various dust components in ISM elements with low-dust mass surface densities as well as in dense regions. Contrary to dust mass estimates derived from a global SED modelling of the region, we can avoid potential biases (namely a dust mass underestimation) caused by a poorer resolution (cf. discussion about biases caused by non-linearities in SED models in Galliano et al. 2011).

<sup>5</sup> cf. further discussions about opacities in Galliano et al. (2011), appendix A



**Figure 7.** Top panel: the N158–N159–N160 complex observed in H I (in units of  $\text{atom cm}^{-2}$ ). The H I map is a combination from ATCA (Kim et al. 2003) and Parkes (Staveley-Smith et al. 2003) observations.  $870\ \mu\text{m}$  contours are overlaid (0.02, 0.1, 0.25 and  $0.4\ \text{Jy beam}^{-1}$ ). Bottom panel: ASTE CO(3–2) observation of N159 (in units of  $\text{K km s}^{-1}$ ). Contours: same as top. For both images, North is up, and east is left.

southern H I peak does spatially coincide with a peak in the  $8\ \mu\text{m}$  emission (see Fig. 3 bottom panel for comparison between the 8 and the  $870\ \mu\text{m}$  emission in N159S). This peak is located  $\sim 30$  pc east of N159S.

#### 4.5.3 CO in N159 and N159S

In this section, we focus more particularly on the N159 region to study how the dust budget and the dust properties are related to the molecular gas. Several CO observations of the N159 nebula have been carried out so far. Johansson et al. (1998) observed  $^{12}\text{CO}(J=1-0)$  with the Swedish-ESO Submillimeter Telescope (SEST). They obtained maps with a resolution of 45 arcsec, corresponding to  $\sim 11$

pc for N159. Bolatto et al. (2000) also mapped the N158/N159/N160 complex in four transitions:  $^{13}\text{CO}(1-0)$ ,  $^{12}\text{CO}(2-1)$ ,  $^{12}\text{CO}(4-3)$ ,  $[\text{C}]\text{I}(\text{}^3\text{P}_1 \rightarrow \text{}^3\text{P}_0)$  also with SEST and the 1.7-m Antarctic Submillimeter Telescope and Remote Observatory (AST/RO). A spatially resolved survey of the LMC was also performed with the NANTEN 4-m telescope in the 2.6 mm carbon monoxide emission with a 40 pc resolution by Fukui et al. (1999, 2008), permitting a study of the GMCs at global scales. Several observations of the CO(4–3) transition and of the CO(3–2) transition have been carried out in selected regions of the LMC. These transitions have been observed in the N158, N159/N160 complex by Mizuno et al. (2010) and Minamidani et al. using NANTEN2 (beam size at 490 GHz: 18 arcsec) and Atacama Submillimeter Telescope Experiment (ASTE; beam size at 350 GHz: 22–23 arcsec). Finally, the Magellanic Mopra Assessment (MAGMA) survey has recently completed a high angular resolution  $^{12}\text{CO}(1-0)$  mapping survey of GMCs across the LMC. The beam size of the instrument is 33 arcsec, which corresponds to a spatial resolution of  $\sim 8$  pc at the distance of the LMC.

The two GMCs of N159 (N159E and N159W) as well as its southern region (N159S) are thus already mapped at high resolution in many transitions. Fig. 7 shows the N159 region observed by ASTE CO(3–2) with 870  $\mu\text{m}$  contours overlaid. N159W is the strongest region and the eastern region breaks into three independent peaks. Compared to the other GMCs, the N159S does not show any heating source and little star formation activity. Bolatto et al. (2000) also note the detection of diffuse low level emission in CO(2–1).

N159E and N159W are associated with embedded star clusters with temperatures that were determined to be 70–80 K while N159S shows a nearly uniform molecular temperature estimated to be  $\sim 30$  K by Mizuno et al. (2010). They also note that the molecular peak of the N159E region is showing an elongated structure that is very well resolved at 870  $\mu\text{m}$  with LABOCA. A slight shift appears between the peak of  $^{12}\text{CO}(4-3)$  in N159W and the 8 and 24  $\mu\text{m}$  peaks. The bright peak of the LABOCA emission in N159W does not seem to show any shift with the ASTE  $^{12}\text{CO}(3-2)$  map. They also compare the spatial distribution of CO with *Spitzer* bands and found a fairly good correlation between the maps. As mentioned before, a peak in the 8  $\mu\text{m}$  emission, situated on the east side of N159S, corresponds to a peak in the H I distribution while a peak in the 870  $\mu\text{m}$  emission (N159S) corresponds to a peak in the CO map. Fukui et al. (2009) already noted the offset between the H I and CO peak for N159. They showed that the H I and CO distributions correlate well on a 40–100 pc scale and argued that the H I envelopes are gravitationally bound by GMCs. They also show that the correlation between the H I and CO distribution breaks down on a more resolved scale. They interpret it as an illustration of the conversion of warmer, low-opacity H I to colder high-opacity H I from which  $\text{H}_2$  could form, as suggested in Ott et al. (2008) and Wong et al. (2009).

#### 4.5.4 Gas-to-dust mass ratios in N159

Assuming a close mixing of dust and gas and that the G/D does not depend on whether we study a predominantly atomic or molecular phase, we can relate the dust mass surface density in each resolved element of N159 to the gas reservoir such as

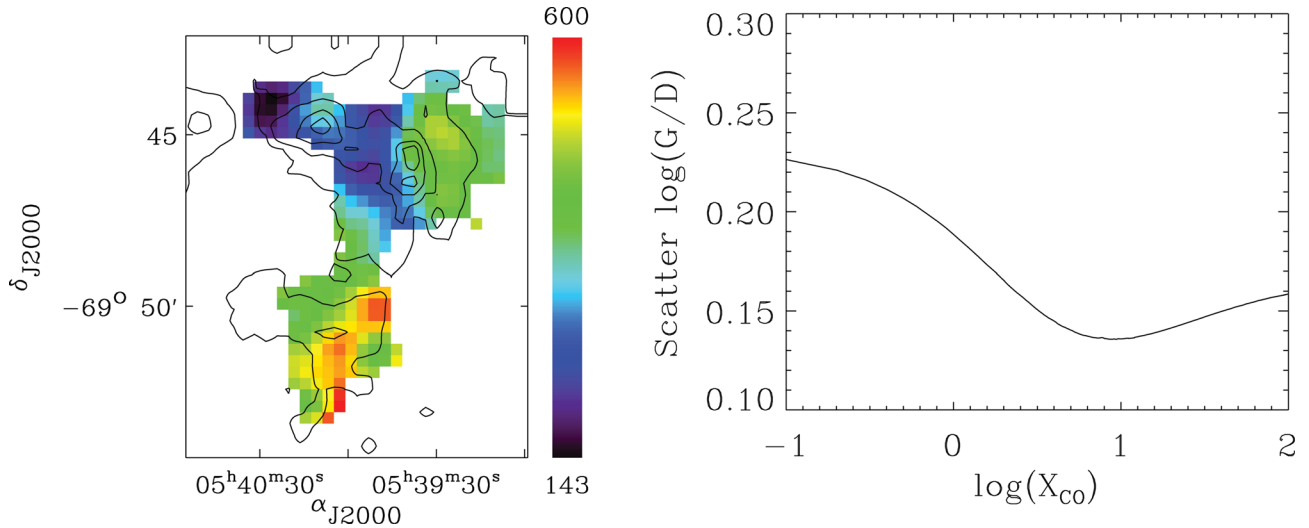
$$G/D = \frac{\Sigma_{\text{H I}} + X_{\text{CO}} I_{\text{CO}}}{\Sigma_{\text{dust}}} \quad (6)$$

with  $X_{\text{CO}}$  the conversion factor in units of  $\text{M}_{\odot} \text{pc}^{-2} (\text{K km s}^{-1})^{-1}$  and  $\Sigma_{\text{H I}}$  and  $\Sigma_{\text{dust}}$  the H I and dust surface densities in  $\text{M}_{\odot} \text{pc}^{-2}$ .

We first need to convert the ASTE CO(3–2) observation of the region N159 (shown in Fig. 7 bottom panel; private communication) to a CO(1–0) map. A mean CO ( $J = 3-2$ )/CO ( $J = 1-0$ ) ratio ( $R_{3-2/1-0}$ ) of 0.6 is usually derived in galaxy discs (Warren et al. 2010) but  $R_{3-2/1-0}$  can probe larger ranges ( $0.2 < R_{3-2/1-0} < 2$ ; Meier et al. 2001; Tosaki et al. 2007; Mao et al. 2010; Warren et al. 2010). Minamidani et al. (2008) investigate this ratio in 10 CO clumps of N159. This H II region being a hot and low-metallicity environment, they find values ranging between 0.7 and 1.4 (so higher than the median 0.6 value), with  $R_{3-2/1-0} = 0.7$  in the core of N159S and 1.1 in the cores of N159W and N159E. No clear North–South trend is observed however. We use the average  $R_{3-2/1-0}$  value of the 10 clumps ( $\sim 0.9$ ) to convert the CO(3–2) into CO(1–0). From the H I map and the derived CO(1–0) map, we can do the following.

*Derive a gas-to-dust mass ratio map* – We use a constant  $X_{\text{CO}}$  factor to convert the CO intensity in molecular hydrogen mass surface density. Fukui et al. (2009) have performed a survey of molecular clouds in the LMC and estimate  $X_{\text{CO}}$  to be  $\sim 7 \times 10^{20} \text{H}_2 \text{cm}^{-2} (\text{K km s}^{-1})^{-1}$ , so three times the Galactic value of  $\sim 2.3 \times 10^{20} \text{H}_2 \text{cm}^{-2} (\text{K km s}^{-1})^{-1}$ . We use the dust mass map obtained with the ‘AC model’ as our dust reference map and convolve the CO and dust surface density maps to the resolution of the H I map using Gaussian kernels. Fig. 8 (left) shows the gas (H I+CO)-to-dust mass ratio map obtained with those hypothesis, with a mean G/D value of 384 (with a non-negligible uncertainty given the 50 per cent errors on dust masses). As a reference, the Galactic value of G/D is  $\sim 157$  (Zubko et al. 2004) so the value we derived is 2.4 times the solar value. The total H I mass contained in the coloured ISM elements of Fig. 8 is  $4.3 \times 10^5 \text{M}_{\odot}$  while the molecular gas mass is  $1.1 \times 10^6 \text{M}_{\odot}$  (thus 2.6 times higher than the atomic mass). The total dust mass in these ISM elements is  $4.3 \times 10^3 \text{M}_{\odot}$ , leading to a globally derived average of 356, consistent with the value derived on a resolved basis in spite of the local variations. We note that given the higher contribution of the  $\text{H}_2$  to the total gas budget, using a slightly different (but constant)  $X_{\text{CO}}$  factor would simply translate into a crude scaling of Fig. 8 to higher or lower G/D ranges but would barely affect the qualitative distribution of Fig. 8 (left). Finally, dust masses are 2.8 times higher when graphite is used to model carbon dust (‘graphite model’), leading to G/D smaller by the same factor ( $G/D \sim 127$ ). Studies of Franco & Cox (1986), Lisenfeld & Ferrara (1998) or James et al. (2002), among others, show that the G/D is proportional to the metallicity of the galaxy. The G/D obtained when dust masses are obtained with graphite in the SED modelling are thus too low compared to those expected in metal-poor environments like the LMC.

*Try to constrain the  $X_{\text{CO}}$  factor* – If we assume now that G/D is constant across the region, we can use the technique proposed by Sandstrom et al. (2012b) in order to derive the  $X_{\text{CO}}$  factor that minimizes the scatter of the logarithm of the G/D across the region. This technique minimizes the effects of outliers on the measured scatter. As suggested in Sandstrom et al. (2012b), we tabulate the  $X_{\text{CO}}$  values from 0.1 to  $100 \text{M}_{\odot} \text{pc}^{-2} (\text{K km s}^{-1})^{-1}$  [thus from  $6.2 \times 10^{18}$  to  $6.2 \times 10^{21} \text{H}_2 \text{cm}^{-2} (\text{K km s}^{-1})^{-1}$ ] and estimate the scatter of the logarithm of the G/D for each value of  $X_{\text{CO}}$ . The scatter for a given  $X_{\text{CO}}$  value is estimated using the IDL *biweight\_mean.pro* function. We finally take the  $X_{\text{CO}}$  value that minimizes the scatter (Fig 8 – right). The minimization occurs for  $X_{\text{CO}} = 8.6 \text{M}_{\odot} \text{pc}^{-2} (\text{K km s}^{-1})^{-1}$  ( $= 5.4 \times 10^{20} \text{H}_2 \text{cm}^{-2} (\text{K km s}^{-1})^{-1}$ ), thus 2.3 times the Galactic conversion factor and 1.3 times lower than that derived by Fukui et al. (2009). This is slightly higher than the factor derived by Pineda et al. (2009) using CO observations only (and the virial



**Figure 8.** Left: map of the G/D of the N159 region derived using  $X_{\text{CO}} = 7 \times 10^{20} \text{ H}_2 \text{ cm}^{-2} (\text{K km s}^{-1})^{-1}$  to convert CO observations in  $\text{H}_2$  mass.  $870 \mu\text{m}$  contours are overlaid (0.02, 0.1, 0.25 and  $0.4 \text{ Jy beam}^{-1}$ ). Right: scatter in the logarithm of G/D across the region as a function of the  $X_{\text{CO}}$  factor used to convert CO observations in  $\text{H}_2$  mass [in units of  $M_{\odot} \text{ pc}^{-2} (\text{K km s}^{-1})^{-1}$ ]. We use the minimization technique described by Sandstrom et al. (2012b). The scatter is minimized when  $X_{\text{CO}} = 8.6 M_{\odot} \text{ pc}^{-2} (\text{K km s}^{-1})^{-1}$ .

mass/density profile of CO clumps) for the molecular ridge or the dust-based value derived by Leroy et al. (2011) ( $\sim 4 \times 10^{20} \text{ H}_2 \text{ cm}^{-2} (\text{K km s}^{-1})^{-1}$ ) for the LMC using *Spitzer*/SAGE data only.

We underline the fact that Sandstrom et al. (2012b) apply the minimization method to unresolved molecular clouds.  $X_{\text{CO}}$  is, in that case, a statistical quantity involving a cloud ensemble, namely a measure of the covering factor of CO clouds in more extended molecular structures. This method favours CO-bright gas and ignores CO-dark gas, which could naturally lead to  $X_{\text{CO}}$  values close to those of the solar neighbourhood. This technique may not be applicable to the individual molecular clouds or clouds complexes we resolve in the LMC. Further studies on the  $X_{\text{CO}}$  factor and potential CO-dark gas reservoirs using dust masses as a tracer of the gas masses will be performed in a future study.

## 5 THERMAL EMISSION AT $870 \mu\text{m}$

As mentioned previously, the LABOCA data reduction might remove faint diffuse emission in the outskirts of the complex. In this section, we select 24 regions across the complex where the  $870 \mu\text{m}$  emission is bright enough not to be affected by the filtering steps and analyse the thermal dust emission at  $870 \mu\text{m}$  in those regions.

### 5.1 Selected regions and correction of radio contamination

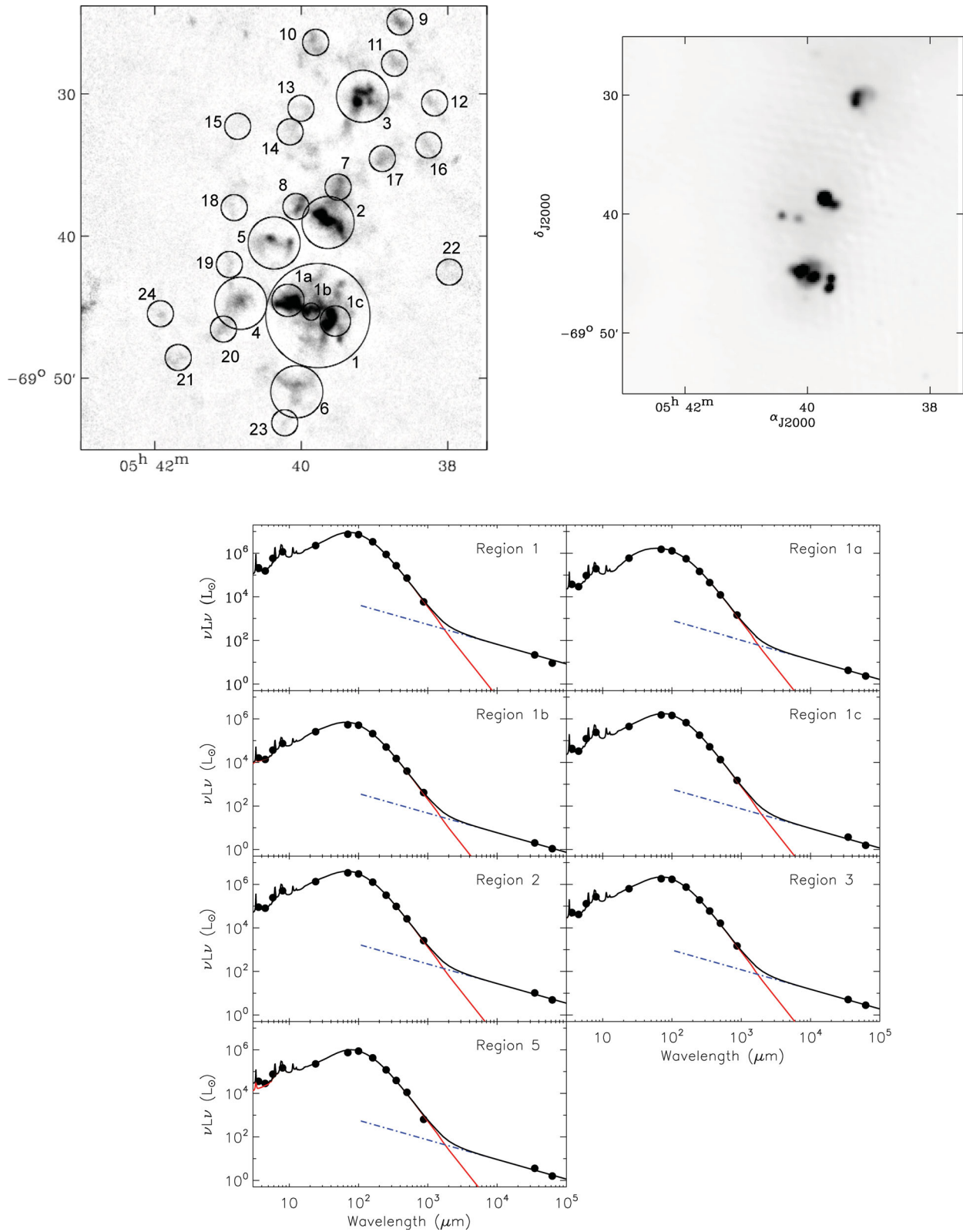
We select individual regions across the complex that span a wide variety of environments, from intensely star-forming regions to a more quiescent ISM to study the detailed dust properties with the empirical SED model of Galliano et al. (2011). Fig. 9 (top left) shows those regions. The circles indicate the photometric apertures we use. We detail the characteristics (centres and sizes) of those apertures in Table 1 along with the *Herschel* and LABOCA  $870 \mu\text{m}$  flux densities of the individual regions. *Herschel* errors are estimated using a combination in quadrature of calibration uncertainties and measurement uncertainties (background effects, choice of the aperture). LABOCA errors are quantified from the rms maps produced by the reduction pipeline.

The  $870 \mu\text{m}$  flux densities we quote in Table 1 contain non-dust contribution, especially free-free radio emission.  $4.8 \mu\text{m}$  (resolution  $30 \text{ arcsec}$ ) and  $8.6 \text{ GHz}$  (resolution  $15 \text{ arcsec}$ ) images of the entire LMC have been obtained by Dickel et al. (2005) using ATCA, which allow us to quantify the radio contamination. These observations reveal a strong radio emission in 30Dor (peak of the radio emission of the entire LMC) as well as in the three bright star-forming regions N158, N159 and N160 (see Fig. 9, top right). They also indicate radio emission in two compact knots in the south-east of N160, spatially correlated with peaks in the IR emission (as well as peaks in the SFR or  $\langle U \rangle$  maps) and corresponding to local decreases of the PAH fraction (see Fig. 4). We convolve the ATCA maps to the SPIRE  $500 \mu\text{m}$  resolution using a Gaussian kernel and estimate the  $4.8$  and  $8.6 \text{ GHz}$  fluxes (at  $6.25$  and  $3.5 \text{ cm}$ , respectively) within our apertures for the seven regions showing radio emission, namely region 1, 1a, 1b, 1c, 2, 3 and 5. With these two constraints, we perform a regression analysis ( $L_{\text{radio}} \propto \nu^{-0.1}$ ) and estimate a free-free contamination of  $\sim 9.6$  per cent,  $9.0$  per cent and  $13$  per cent of the  $870 \mu\text{m}$  fluxes in the regions 2, 3, 5, respectively, and  $10.4$  per cent in region 1 (N159), with individual contaminations of  $8.0$  per cent,  $13$  per cent and  $5.6$  per cent in the subregions 1a, 1b and 1c, respectively.

### 5.2 Results

We first apply our two-MBB model ( $\beta_c = 1.5$ ) to derive the cold dust temperature of our selected regions using the integrated flux densities tabulated in Table 1 but correcting the  $870 \mu\text{m}$  flux for radio contamination. We also model the selected regions using the ‘AC’ model of Galliano et al. (2011) described in Section 3. For the seven regions where radio emission is detected, we kept the  $870 \mu\text{m}$  flux densities of Table 1 (i.e. flux densities including non-dust contamination) but include the radio component in the modelling procedure to allow the visualization of this contribution in the SEDs of those regions. This component will be constrained by our two ATCA data points. As mentioned in the previous section, the free-free contamination is inferior to  $10$  per cent in the  $\text{H II}$  region and negligible outside their cores.



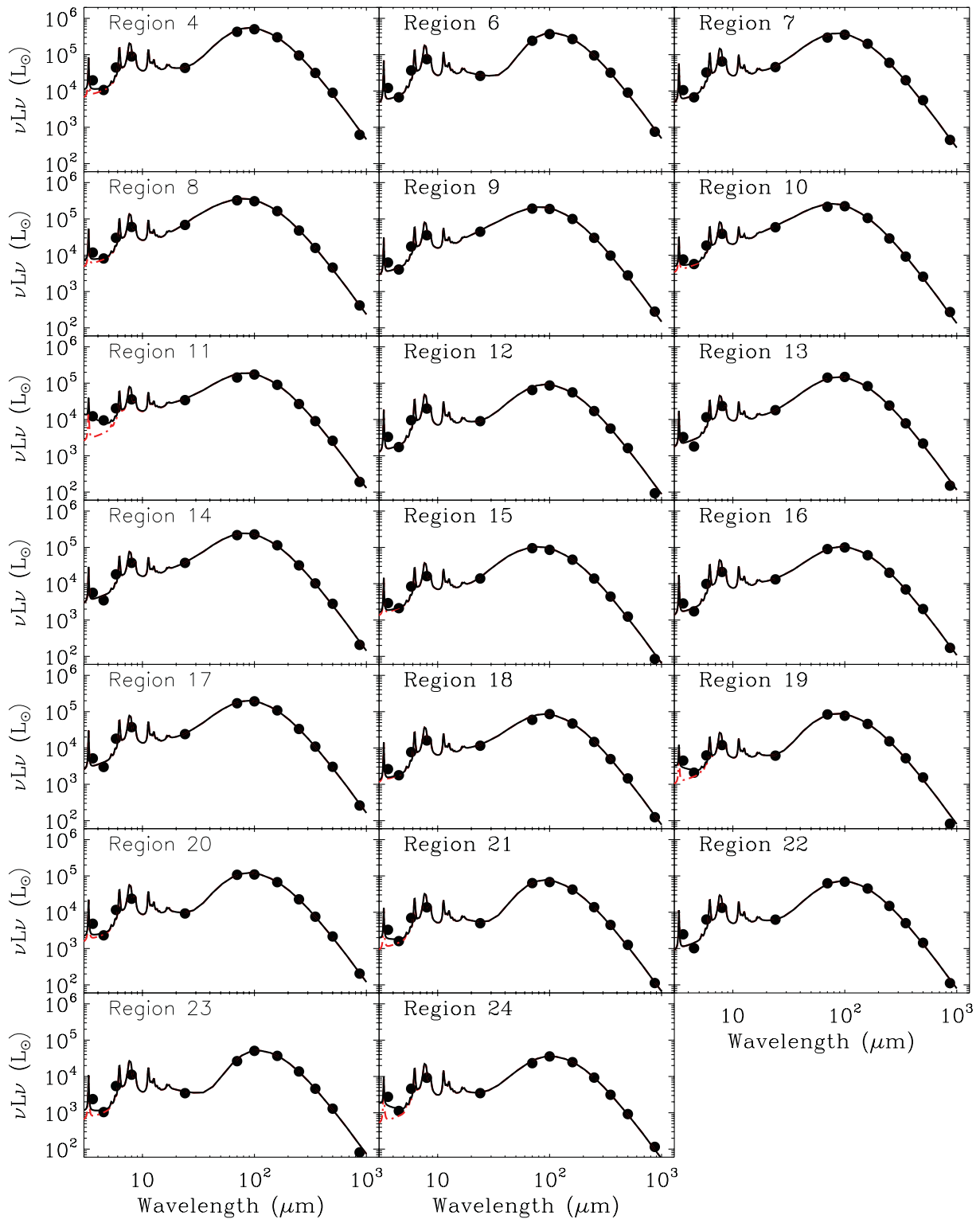


**Figure 9.** Top left panel: selected regions across the complex overlaid on the 870 μm image. Circles also indicate the size of the photometric apertures. Top right panel: ATCA radio map at 4.8 GHz (see Dickel et al. 2005, for the complete map of the LMC). Bottom panel: individual SEDs of the bright sources using the Galliano et al. (2011) ‘AC’ SED modelling technique in addition with a radio component. The SED models shown in this figure were thus produced using amorphous carbon to model carbon dust. Filled circles show *Spitzer*, *Herschel*, LABOCA and ATCA radio fluxes. Errors are smaller than the symbols. The integrated SEDs appear with thick black lines. The red lines underline the thermal dust contribution. The dash–dotted lines indicate the free–free emission.

**Table 1.** MIPS, PACS, SPIRE and LABOCA flux densities.

Region	RA (J2000)	Centre Dec. (J2000)	Radius (arcsec)	MIPS 24 (Jy)	MIPS 70 (Jy)	PACS 100 (Jy)	PACS 160 (Jy)	SPIRE 250 (Jy)	SPIRE 350 (Jy)	SPIRE 500 (Jy)	LABOCA <sup>a</sup> (Jy)
1 (N159)	05 39 46.65	-69 45 39.94	220	243.5 ± 24.3	2363.5 ± 236.3	3226.9 ± 163.5	2427.2 ± 121.4	995.4 ± 70.2	424.2 ± 29.9	162.5 ± 11.5	22.9 ± 1.6
1a (N159E)	05 40 10.98	-69 44 35.84	64	64.3 ± 6.4	477.9 ± 47.8	579.5 ± 29.1	402.0 ± 20.1	164.1 ± 11.6	70.7 ± 5.0	27.5 ± 2.0	5.7 ± 0.1
1b	05 39 52.10	-69 45 23.17	36	28.1 ± 2.8	170.3 ± 17.0	231.8 ± 11.6	152.4 ± 7.6	57.7 ± 4.1	23.9 ± 1.7	9.1 ± 0.6	1.6 ± 0.1
1c (N159W)	05 39 32.51	-69 46 02.74	68	48.7 ± 4.9	481.2 ± 48.1	651.8 ± 32.7	487.7 ± 24.4	202.6 ± 14.4	82.6 ± 5.9	30.4 ± 2.2	5.9 ± 0.2
2 (N160)	05 39 38.63	-69 39 06.79	110	144.7 ± 14.5	1073.3 ± 107.3	1362.3 ± 68.5	912.9 ± 45.6	359.2 ± 25.5	153.6 ± 10.9	58.9 ± 4.2	10.2 ± 0.4
3 (N158)	05 39 11.22	-69 30 13.65	110	68.3 ± 6.8	572.9 ± 57.3	770.2 ± 39.1	540.8 ± 27.0	216.2 ± 15.3	94.4 ± 6.7	37.1 ± 2.6	5.8 ± 0.4
4	05 40 49.41	-69 44 48.22	110	4.7 ± 0.5	134.5 ± 13.4	226.2 ± 12.5	217.0 ± 10.9	106.88 ± 7.5	49.6 ± 3.5	20.2 ± 1.4	2.4 ± 0.4
5	05 40 22.25	-69 40 33.51	110	24.5 ± 2.4	235.6 ± 23.6	394.6 ± 20.6	309.6 ± 15.5	135.2 ± 9.6	61.9 ± 4.4	25.2 ± 1.8	2.5 ± 0.4
6 (N159S)	05 40 03.75	-69 51 01.62	110	2.8 ± 0.3	76.3 ± 7.6	166.2 ± 9.6	193.9 ± 9.7	107.3 ± 7.5	50.4 ± 3.5	20.4 ± 1.4	3.0 ± 0.4
7	05 39 30.65	-69 36 37.42	55	4.9 ± 0.5	93.1 ± 9.3	159.6 ± 8.2	143.8 ± 7.2	67.4 ± 4.7	31.2 ± 2.2	12.6 ± 0.9	1.8 ± 0.1
8	05 40 04.63	-69 37 59.86	55	7.4 ± 0.7	102.6 ± 10.3	138.6 ± 7.1	118.2 ± 5.9	53.9 ± 3.8	25.1 ± 1.8	10.3 ± 0.7	1.6 ± 0.1
9	05 38 41.55	-69 24 58.82	55	4.8 ± 0.5	60.7 ± 6.1	84.8 ± 4.5	71.9 ± 3.6	34.0 ± 2.4	15.4 ± 1.1	6.3 ± 0.5	1.1 ± 0.1
10	05 39 49.03	-69 26 26.38	55	6.4 ± 0.6	68.2 ± 6.8	100.9 ± 5.3	76.4 ± 3.8	32.6 ± 2.3	14.5 ± 1.0	5.8 ± 0.4	1.1 ± 0.1
11	05 38 45.73	-69 27 53.10	55	3.7 ± 0.4	45.2 ± 4.5	78.0 ± 4.2	65.0 ± 3.3	30.1 ± 2.1	14.2 ± 1.0	5.9 ± 0.4	0.8 ± 0.1
12	05 38 13.31	-69 30 39.46	55	1.0 ± 0.1	20.5 ± 2.0	38.9 ± 2.3	40.2 ± 2.0	19.2 ± 1.4	8.9 ± 0.6	3.7 ± 0.3	0.4 ± 0.1
13	05 40 00.70	-69 31 04.85	55	2.0 ± 0.2	44.9 ± 4.5	66.8 ± 3.6	59.6 ± 3.0	27.3 ± 1.9	12.3 ± 0.9	4.9 ± 0.4	0.6 ± 0.1
14	05 40 09.44	-69 32 44.60	55	4.1 ± 0.4	68.8 ± 6.9	103.0 ± 5.4	82.6 ± 4.1	36.2 ± 2.5	16.1 ± 1.1	6.3 ± 0.5	0.8 ± 0.1
15	05 40 51.61	-69 32 20.98	55	1.5 ± 0.1	30.1 ± 3.0	38.6 ± 2.3	33.2 ± 1.7	15.7 ± 1.1	7.0 ± 0.5	2.8 ± 0.2	0.3 ± 0.1
16	05 38 17.88	-69 33 37.52	55	1.4 ± 0.1	28.4 ± 2.8	45.0 ± 2.5	43.9 ± 2.2	22.6 ± 1.6	11.0 ± 0.8	4.5 ± 0.3	0.7 ± 0.1
17	05 38 55.03	-69 34 36.05	55	2.6 ± 0.3	33.8 ± 3.4	86.8 ± 4.6	78.3 ± 3.9	37.6 ± 2.6	17.2 ± 1.2	6.8 ± 0.5	1.0 ± 0.1
18	05 40 54.56	-69 38 04.19	55	1.3 ± 0.1	18.8 ± 1.9	38.6 ± 2.4	34.0 ± 1.7	16.6 ± 1.2	7.8 ± 0.6	3.3 ± 0.2	0.5 ± 0.1
19	05 40 58.54	-69 42 04.22	55	0.7 ± 0.1	26.5 ± 2.6	34.7 ± 2.1	33.1 ± 1.7	17.2 ± 1.2	8.2 ± 0.6	3.5 ± 0.3	0.3 ± 0.1
20	05 41 03.54	-69 46 36.87	55	1.0 ± 0.1	33.9 ± 3.4	49.3 ± 2.8	48.5 ± 2.4	25.5 ± 1.8	11.9 ± 0.8	4.9 ± 0.3	0.8 ± 0.1
21	05 41 40.44	-69 48 36.23	55	0.5 ± 0.1	20.0 ± 2.0	30.6 ± 2.3	30.4 ± 1.5	15.5 ± 1.1	7.1 ± 0.5	2.9 ± 0.2	0.4 ± 0.1
22	05 38 00.17	-69 42 32.98	55	0.7 ± 0.1	19.8 ± 2.0	31.2 ± 1.9	32.4 ± 1.6	16.8 ± 1.2	7.9 ± 0.6	3.2 ± 0.2	0.4 ± 0.1
23	05 40 13.59	-69 53 12.56	55	0.4 ± 0.1	8.34 ± 0.8	22.9 ± 1.6	26.7 ± 1.3	15.5 ± 1.1	7.3 ± 0.5	2.9 ± 0.2	0.3 ± 0.1
24	05 41 54.74	-69 45 30.83	55	0.4 ± 0.1	7.3 ± 0.7	16.1 ± 1.8	17.9 ± 0.9	10.5 ± 0.8	5.0 ± 0.4	2.1 ± 0.2	0.5 ± 0.1

<sup>a</sup>Radio contamination is not subtracted from those values.



**Figure 10.** Individual SEDs in different regions of the diffuse ISM using the Galliano et al. (2011) ‘AC’ SED modelling technique. The SED models shown in this figure were thus produced using amorphous carbon to model carbon dust. Filled circles show *Spitzer*, *Herschel* and LABOCA fluxes. Errors are smaller than the symbols.

Fig. 9 (bottom panel) shows the SEDs of regions detected in radio (and modelled with a free–free component) while Fig. 10 shows the SED obtained in the other regions. We observe variations in the SED shapes from region to region. The SEDs of the brightest H II regions

(regions 1, 2, 3, 5) show ‘flat’ profiles indicating a warmer dust temperature range. The main differences in the SED shape occur in the MIR regime where the 24-to-70 slope strongly varies from one region to another, with higher 24/70 colour in H II regions and lower

**Table 2.** Cold dust temperatures, dust masses, PAH fraction, radiation field intensity parameters and H I-to-dust mass ratios obtained for our selected regions using the ‘AC model’.

Region	$T_c$ (K)	$M_{\text{dust}}$ ( $M_{\odot}$ )	$f_{\text{PAH}}$	$\alpha$	$U_{\text{min}}$	$U_{\text{max}}$	H I/D
1 (N159)	34.7	$3.08 \times 10^3$ ( $8.67 \times 10^3$ ) <sup>a</sup>	0.37	2.38	6.9	$1.2 \times 10^5$	165
1a (N159E)	27.7	$8.01 \times 10^2$ ( $3.40 \times 10^3$ )	0.27	1.94	2.2	$3.5 \times 10^3$	55
1b	34.7	$1.71 \times 10^2$ ( $6.03 \times 10^2$ )	0.23	2.26	8.2	$1.0 \times 10^5$	79
1c (N159W)	31.0	$7.50 \times 10^2$ ( $2.92 \times 10^3$ )	0.41	2.32	5.1	$3.9 \times 10^4$	67
2 (N160)	33.7	$1.15 \times 10^3$ ( $4.32 \times 10^3$ )	0.31	2.27	7.1	$1.1 \times 10^5$	102
3 (N158)	33.6	$7.21 \times 10^2$ ( $2.17 \times 10^3$ )	0.32	2.31	6.5	$9.4 \times 10^4$	130
4	26.8	$5.29 \times 10^2$ ( $1.44 \times 10^3$ )	0.63	2.50	2.8	$2.2 \times 10^2$	199
5	34.7	$5.14 \times 10^2$ ( $1.36 \times 10^3$ )	0.39	2.39	4.6	$1.0 \times 10^7$	195
6 (N159S)	24.8	$6.44 \times 10^2$ ( $1.92 \times 10^3$ )	0.83	2.42	3.8	4.8	212
7	28.7	$3.01 \times 10^2$ ( $8.65 \times 10^2$ )	0.60	2.50	3.4	$3.1 \times 10^3$	99
8	27.2	$2.65 \times 10^2$ ( $9.18 \times 10^2$ )	0.54	2.24	2.7	$3.9 \times 10^3$	131
9	26.7	$1.66 \times 10^2$ ( $4.91 \times 10^2$ )	0.53	2.32	2.8	$2.1 \times 10^3$	111
10	29.7	$1.34 \times 10^2$ ( $4.04 \times 10^2$ )	0.44	2.36	4.4	$1.3 \times 10^5$	126
11	28.5	$1.42 \times 10^2$ ( $3.87 \times 10^2$ )	0.60	2.43	3.2	$1.0 \times 10^7$	151
12	26.8	$1.08 \times 10^2$ ( $2.47 \times 10^2$ )	0.86	2.50	2.3	$5.5 \times 10^2$	164
13	28.2	$1.29 \times 10^2$ ( $3.10 \times 10^2$ )	0.48	2.50	2.9	$4.8 \times 10^3$	205
14	30.3	$1.45 \times 10^2$ ( $3.66 \times 10^2$ )	0.47	2.50	4.3	$4.2 \times 10^4$	196
15	26.8	$7.34 \times 10^1$ ( $2.16 \times 10^2$ )	0.54	2.18	2.7	$9.0 \times 10^3$	374
16	24.9	$1.34 \times 10^2$ ( $3.57 \times 10^2$ )	0.67	2.50	2.0	$2.0 \times 10^4$	138
17	27.5	$1.84 \times 10^2$ ( $4.60 \times 10^2$ )	0.62	2.50	2.8	$4.1 \times 10^3$	145
18	27.2	$9.20 \times 10^1$ ( $2.25 \times 10^2$ )	0.66	2.50	2.4	$8.2 \times 10^4$	219
19	24.2	$1.09 \times 10^2$ ( $3.30 \times 10^2$ )	0.48	1.75	1.0	$7.3 \times 10^1$	202
20	24.5	$1.64 \times 10^2$ ( $5.37 \times 10^2$ )	0.78	1.78	1.1	$5.5 \times 10^1$	176
21	25.6	$8.79 \times 10^1$ ( $3.23 \times 10^2$ )	0.74	1.00	1.0	$2.1 \times 10^1$	327
22	24.8	$9.97 \times 10^1$ ( $2.47 \times 10^2$ )	0.67	2.50	1.9	$3.5 \times 10^2$	275
23	24.1	$1.07 \times 10^2$ ( $2.60 \times 10^2$ )	0.95	2.50	3.0	4.0	289
24	23.9	$7.76 \times 10^1$ ( $1.92 \times 10^2$ )	0.99	2.50	1.3	$4.6 \times 10^2$	182

<sup>a</sup> We indicate the dust masses obtained using the graphite model in parenthesis for comparison.

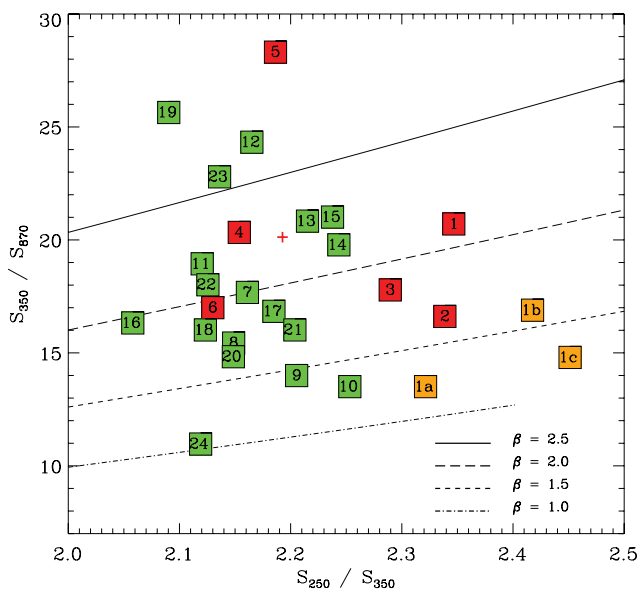
ratios in quiescent ISM (regions 12, 19 or 21 for instance). Region 6 (N159S) and region 21 associated with the same molecular cloud have SEDs strongly peaked due to the absence of star formation in the region.

Table 2 summarizes the most important parameters obtained from the two fitting procedures: the cold temperature  $T_{\text{dust}}$ , the dust mass  $M_{\text{dust}}$ , the PAH fraction  $f_{\text{PAH}}$  and the three parameters characterizing the radiation fields (the minimum and maximum intensities of the radiation field  $U_{\text{min}}$  and  $U_{\text{max}}$  and  $\alpha$ , the index describing the fraction of dust exposed to a given intensity). We also add the dust masses obtained when a ‘graphite model’ is applied to the data, for comparison. As mentioned previously, diffuse ISM shows dust temperatures of  $\sim 26$  K on average while N158, N159 and N160 show warmer dust temperatures ( $> 30$  K). There is thus a clear evolution of the dust temperature range between bright star-forming regions like N159 (region 1), intermediate star-forming regions like region 3, 17, 16 to very quiescent regions like region 10 or 21. The dust masses are systematically lower when using amorphous carbon in lieu of graphite to model carbon dust, 2.8 times lower on average. Indeed, the ‘amorphous carbon’ model requires less cold dust to account for the same submm emission. This will have significant consequences on the study of the G/D in the star-forming complex (see Section 6 for discussion). We finally note that the values derived using graphite are of the same order than those derived by Rantakyro et al. (2005) using SIMBA data at 1.2 mm.

The  $\alpha$  values for the diffuse regions very often reach the limit of 2.5 fixed in the model for this parameter. This is consistent with the assumption that in the diffuse medium the heating intensity falls as  $r^{-2}$  away from the heating source so  $dU/dr$  evolves as  $r^{-3}$ . In a

uniform medium where  $dM_{\text{dust}}/dr$  evolves as  $r^2$ ,  $dM_{\text{dust}}/dU$  is thus proportional to  $U^{-2.5}$ , so  $\alpha = 2.5$  (Dale et al. 2001). To perform a global SED modelling of nearby spiral galaxies, Draine et al. (2007) and Dale et al. (2012) advise fixing the maximum heating intensity to  $10^6$ , to limit the number of free parameters (fixed to  $10^7$  in Aniano et al. 2012). Given the number of data points we have to perform the modelling, we decide not to fix the maximum heating intensity of the radiation field  $U_{\text{max}}$  in our study to investigate its possible variations from one region to another. Our  $U_{\text{max}}$  values are not allowed to be higher than  $10^7$  during the modelling. Only two regions reach this maximum limit. N158, N159 and N160 show maximum intensities of  $\sim 10^4$ – $10^5$  while diffuse ISM shows lower maximum intensities. As suggested by their peaked SED shape, the two south regions N159S and Region 23 have a very narrow (and low) range of radiation field intensities, with  $[U_{\text{min}}, U_{\text{max}}]$  ranges of [3.8–4.8] for Region 6, [3.0–4.0] for Region 23. As observed previously, the PAH fraction is very low in the H II regions compared to the diffuse ISM around those regions.

Finally, we also estimate the H I mass in each aperture. Values are tabulated in Table 2. As mentioned previously, the value of the Galactic G/D is 157. The LMC having a lower metallicity, the G/D of the LMC should be higher than this value. We observe a large spread in the H I/D values from one region to another, and low ratios in H II regions, which is not surprising. Indeed, the whole region being a very large molecular complex, the molecular gas is thus expected to be a significant fraction of the total gas mass in those regions as well. As previously mentioned, further investigations including CO observations for the whole complex will be investigated in a future paper.



**Figure 11.** SPIRE/LABOCA colour–colour diagram. The 350-to-870  $\mu\text{m}$  flux density ratios are plotted as a function of the 250-to-350  $\mu\text{m}$  flux density ratio. The brightest star-forming regions of the complex (1 to 6) appear in red. The individual subregions of N159 (1a, 1b and 1c) are in orange. Regions 7 to 24 are in green. The lines show the colours obtained with single-temperature modified blackbodies with an emissivity index of 2.5, 2, 1.5 and 1. Radio contamination has been removed from the 870  $\mu\text{m}$  flux densities. The red cross indicates where region 5 would fall if the modelled 870  $\mu\text{m}$  value was used instead of the flux density we estimate.

### 5.3 SPIRE/LABOCA colour–colour diagram

Fig. 11 shows  $S_{350}/S_{870}$  versus  $S_{250}/S_{350}$ . We remove the radio contamination from the LABOCA flux densities used in this plot. The different lines are colours obtained modelling single-temperature modified blackbodies with an emissivity index of 2.5, 2, 1.5 and 1 and generated with temperatures ranging from 5 (left) to 70 K (right). The bright star-forming regions have higher  $S_{250}/S_{350}$ , consistent with regions with higher temperature dust. They also show lower  $S_{350}/S_{870}$  ratios. N158 (region 3), N159 (region 1) and N160 (region 2) thus present ‘flatter’ submm slope than regions of the diffuse ISM (i.e. higher 870  $\mu\text{m}$  flux density for a fixed 350  $\mu\text{m}$  flux density). Region 5 does not appear in the diagram because of its very high 350-to-870 colour. Fig. 9 (bottom panel) suggests that the 870  $\mu\text{m}$  flux density we derive could be underestimated compared to what is expected from the SPIRE bands. In Fig. 11, we indicate by a red cross where the region would fall in the plot if the modelled 870  $\mu\text{m}$  value (derived from our fit) was used instead of the flux density derived directly from the 870  $\mu\text{m}$  map.

### 5.4 About submm excess

Ground-based data and now *Herschel* observations of low-metallicity environments at submm wavelengths have helped us to better probe the cold phases of dust and investigate variations in their properties. These observations have led to the detection of a ‘submm excess’ (Galliano et al. 2005; Marleau et al. 2006; Galametz et al. 2009), namely submm emission higher than that predicted by FIR data and standard dust models (see e.g. Draine & Li 2007). Several interpretations have been analysed to explain this excess. It could be linked with a different dust component: very cold

dust (e.g. Galliano et al. 2003, 2005; Galametz et al. 2010), emission from ‘spinning dust’ (Ysard & Verstraete 2010) or magnetic dipole radiation from magnetic nano-particles (Draine & Hensley 2012). The excess could also be linked with a modification of the dust emissivity properties at colder temperatures (Meny et al. 2007; Paradis et al. 2010).

Several studies have been dedicated to the investigation of submm and millimetre excess in the LMC. Bot et al. (2010b) found excess millimetre emission while modelling the integrated SED of the LMC using FIR and radio data. This excess was explained by possible emission from ‘spinning dust’. However, this hypothesis could require extreme excitation conditions for the small dust grains expected to be the driver of such emission. Recent *Planck* observations of the LMC were analysed in Planck Collaboration (2011) and also led to the detection of a millimetre excess longward 500  $\mu\text{m}$ . They found that cosmic microwave background (CMB) fluctuations would be sufficient to explain the excess. Using *Herschel* observations of a large strip across the LMC, Gordon et al. (2010) showed, on a more resolved scale, that the *Herschel* 500  $\mu\text{m}$  emission was  $\sim 10$  per cent higher than expected from extrapolating models fitted at shorter wavelengths (and using an MBB with an emissivity index of  $\beta = 1.5$ ) and found a weak anti-correlation of the excess with the MIPS 24  $\mu\text{m}$  emission or the total gas surface density. Using the same resolved SED modelling technique than that applied in this analysis (and AC to model carbon dust), Galliano et al. (2011) confirm the detection of a 500  $\mu\text{m}$  extended emission excess in the same strip across the LMC, with an average relative amplitude of 15 per cent (and variations up to 40 per cent). They found that this resolved submm excess anti-correlates well with the dust mass surface density and is probably not linked with very cold dust or CMB fluctuations.

The SEDs presented in Figs 9 and 10 do not show excess emission longward 500  $\mu\text{m}$ . Our model seems sufficient to properly fit the observations in the strongly star-forming regions as well as in the more diffuse regions we modelled, without requiring any extra component to explain the submm emission. We nevertheless note that unlike Gordon et al. (2010) or Galliano et al. (2011), we do not study regions with very low surface densities in this analysis. If the environment where submm excess is hiding is in the low surface brightness regions, we will not be able to detect it in our star-forming complex. Low surface brightness structures are also the regions where our data reduction of LABOCA data is the most likely to have removed signal, which could explain the non-detection.

## 6 CONCLUSIONS

In this paper, we combine *Spitzer* Space Telescope, *Herschel* Space Observatory and LABOCA MIR to submm data (from 3.6 to 870  $\mu\text{m}$ ) of the resolved massive star-forming region N158–N159–N160 located in the LMC.

(i) Using a resolved 2MBB fitting technique and a  $\beta_c$  fixed to 1.5, we find an average temperature of  $\sim 27$  K across the region, with a maximum in N160. Using data from 3.6 to 500  $\mu\text{m}$ , a physical SED modelling and the hypothesis of amorphous carbon to model carbon dust, we also derive maps of the dust temperature distribution, the average starlight intensity, the PAH fraction, the SFR and the dust mass surface densities. The PAH fraction strongly decreases in our H II regions. This decrease coincides with peaks in the mean radiation field intensity map, which is consistent with the well-known destruction of PAHs by strong radiation fields. The absence of PAHs could also be linked with the young age of the clusters,

namely that the regions could be too young to have formed any PAH.

(ii) We analyse how submm colours vary across the star-forming complex and study their dependency with the surface brightnesses or the radiation field intensity ( $U$ ). We find that the submm ratios correlate strongly with ( $U$ ) and that while the 100/160 and 160/250 colours correlate more strongly with the 24  $\mu\text{m}$  brightness, the 250/350 and 350/500 colours equally correlate with the 3.6 and the 24  $\mu\text{m}$  surface brightnesses. Possible variation of the emissivity with temperature has been investigated using SPIRE colour–colour diagrams. No clear trend is observed.

(iii) The dust surface densities follow the FIR distribution and a non-negligible amount of dust is detected in N159S. We find a total dust mass of  $2.1 \times 10^4 M_{\odot}$  in the resolved elements we model (and 2.8 times more dust if graphite is used to model carbon dust).

(iv) Considering that gas and dust are closely mixed in the N159 region, we use our dust mass map to compare the distribution of dust with those of the tracers of the atomic gas in the complex to investigate variations in the atomic+–molecular gas-to-dust ratio in N159. We use a CO(3–2) map of N159 to quantify the molecular reservoir in that region. A mean value of  $\sim 356$  is derived for the N159 complex when using the  $X_{\text{CO}}$  conversion factor of Fukui et al. (2009) [ $= 7 \times 10^{20} \text{ H}_2 \text{ cm}^{-2} (\text{K km s}^{-1})^{-1}$ ]. If we consider a constant G/D in the complex, we can apply the minimization technique of Sandstrom et al. (2012b) to inversely derive the  $X_{\text{CO}}$  conversion factor of the complex that minimizes the D/G scatter in N159. The D/G scatter is minimized when the conversion factor  $X_{\text{CO}}$  is equal to  $8.6 M_{\odot} \text{ pc}^{-2} (\text{K km s}^{-1})^{-1}$  [ $= 5.4 \times 10^{20} \text{ H}_2 \text{ cm}^{-2} (\text{K km s}^{-1})^{-1}$ ].

(v) We finally model the SEDs of 24 selected regions, now including the 870  $\mu\text{m}$  data in the fitting, and describe the variations in the dust thermal emission (thus in the SED shape) across the complex. We show that our ‘AC’ model is sufficient to explain the submm emission we observe at 870  $\mu\text{m}$ .

## ACKNOWLEDGEMENTS

First, we would like to thank the referee for his/her careful reading of the paper. MR wishes to acknowledge support from FONDECYT(CHILE) grant No1080335. PACS has been developed by MPE (Germany); UVIE (Austria); KU Leuven, CSL, IMEC (Belgium); CEA, LAM (France); MPIA (Germany); INAF-IFSI/OAA/OAP/OAT, LENS, SISSA (Italy); IAC (Spain). This development has been supported by BMVIT (Austria), ESA-PRODEX (Belgium), CEA/CNES (France), DLR (Germany), ASI/INAF (Italy) and CICYT/MCYT (Spain). SPIRE has been developed by a consortium of institutes led by Cardiff Univ. (UK) and including: Univ. Lethbridge (Canada); NAOC (China); CEA, LAM (France); IFSI, Univ. Padua (Italy); IAC (Spain); Stockholm Observatory (Sweden); Imperial College London, RAL, UCL-MSSL, UKATC, Univ. Sussex (UK); and Caltech, JPL, NHSC, Univ. Colorado (USA). This development has been supported by national funding agencies: CSA (Canada); NAOC (China); CEA, CNES, CNRS (France); ASI (Italy); MCINN (Spain); SNSB (Sweden); STFC, UKSA (UK) and NASA (USA).

## REFERENCES

Aguirre J. E. et al., 2003, *ApJ*, 596, 273  
 Aniano G., Draine B. T., Gordon K. D., Sandstrom K., 2011, *PASP*, 123, 1218  
 Aniano G. et al., 2012, *ApJ*, 756, 138

Bendo G. J. et al., 2006, *ApJ*, 652, 283  
 Bendo G. J. et al., 2012, *MNRAS*, 419, 1833  
 Bernard J.-P. et al., 2008, *AJ*, 136, 919  
 Bica E., Claria J. J., Dottori H., Santos J. F. C., Jr, Piatti A. E., 1996, *ApJS*, 102, 57  
 Bolatto A. D., Jackson J. M., Israel F. P., Zhang X., Kim S., 2000, *ApJ*, 545, 234  
 Bolatto A., Jackson J., Israel F., Zhang X., Stark A., 2001, in Wootten A., ed., *ASP Conf. Ser. Vol. 235*, Science with the Atacama Large Millimeter Array. Astron. Soc. Pac., San Francisco, p. 301  
 Boquien M. et al., 2010, *ApJ*, 713, 626  
 Bot C. et al., 2010a, *A&A*, 524, A52  
 Bot C., Ysard N., Paradis D., Bernard J. P., Lagache G., Israel F. P., Wall W. F., 2010b, *A&A*, 523, A20  
 Böttner C., Klein U., Heithausen A., 2003, *A&A*, 408, 493  
 Calzetti D., 2007, *Nuovo Cimento B Serie*, 122, 971  
 Carlson L. R., Sewilo M., Meixner M., Romita K. A., Lawton B., 2012, *A&A*, 542, A66  
 Chen H.-W. et al., 2009, *ApJ*, 691, 152  
 Chen C.-H. R. et al., 2010, *ApJ*, 721, 1206  
 Cohen R. S., Dame T. M., Garay G., Montani J., Rubio M., Thaddeus P., 1988, *ApJ*, 331, L95  
 Dale D. A., Helou G., Contursi A., Silbermann N. A., Kolhatkar S., 2001, *ApJ*, 549, 215  
 Dale D. A. et al., 2012, *ApJ*, 745, 95  
 de Boer K. S., Braun J. M., Vallenari A., Mebold U., 1998, *A&A*, 329, L49  
 Deharveng L., Caplan J., Lombard J., 1992, *A&AS*, 94, 359  
 Dickel J. R., McIntyre V. J., Gruendl R. A., Milne D. K., 2005, *AJ*, 129, 790  
 Draine B. T., Hensley B., 2012, *ApJ*, 757, 103  
 Draine B. T., Lee H. M., 1984, *ApJ*, 285, 89  
 Draine B. T., Li A., 2007, *ApJ*, 657, 810  
 Draine B. T., Malhotra S., 1993, *ApJ*, 414, 632  
 Draine B. T. et al., 2007, *ApJ*, 663, 866  
 Dunne B. C., Points S. D., Chu Y.-H., 2001, *ApJS*, 136, 119  
 Dupac X. et al., 2003, *A&A*, 404, L11  
 Dwek E., 1998, *ApJ*, 501, 643  
 Dwek E., 2005, in Popescu C. C., Tuffs R. J., eds, *AIP Conf. Ser. Vol. 761*, The Spectral Energy Distributions of Gas-Rich Galaxies: Confronting Models with Data. Am. Inst. Phys., New York, p. 103  
 Engelbracht C. W., Rieke G. H., Gordon K. D., Smith J.-D. T., Werner M. W., Moustakas J., Willmer C. N. A., Vanzil L., 2008, *ApJ*, 678, 804  
 Eskew M., Zaritsky D., Meidt S., 2012, *AJ*, 143, 139  
 Fazio G. G. et al., 2004, *ApJS*, 154, 10  
 Feast M., 1999, *PASP*, 111, 775  
 Fioc M., Rocca-Volmerange B., 1997, *A&A*, 326, 950  
 Fleener C. E., Payne J. T., Chu Y.-H., Chen C.-H. R., Gruendl R. A., 2010, *AJ*, 139, 158  
 Franco J., Cox D. P., 1986, *PASP*, 98, 1076  
 Fukui Y. et al., 1999, *PASJ*, 51, 745  
 Fukui Y. et al., 2008, *ApJS*, 178, 56  
 Fukui Y. et al., 2009, *ApJ*, 705, 144  
 Galametz M. et al., 2009, *A&A*, 508, 645  
 Galametz M. et al., 2010, *A&A*, 518, L55  
 Galametz M., Madden S. C., Galliano F., Hony S., Bendo G. J., Sauvage M., 2011, *A&A*, 532, A56  
 Galametz M. et al., 2012, *MNRAS*, 425, 763  
 Galliano F., Madden S. C., Jones A. P., Wilson C. D., Bernard J.-P., Le Peintre F., 2003, *A&A*, 407, 159  
 Galliano F., Madden S. C., Jones A. P., Wilson C. D., Bernard J.-P., 2005, *A&A*, 434, 867  
 Galliano F., Dwek E., Chialia P., 2008, *ApJ*, 672, 214  
 Galliano F. et al., 2011, *A&A*, 536, A88  
 Gatley I., Becklin E. E., Hyland A. R., Jones T. J., 1981, *MNRAS*, 197, 17p  
 Gordon K. D. et al., 2010, *A&A*, 518, L89  
 Griffin M. J. et al., 2010, *A&A*, 518, L3  
 Haas M., Klaas U., Bianchi S., 2002, *A&A*, 385, L23  
 Henize K. G., 1956, *ApJS*, 2, 315

- Heydari-Malayeri M., Rosa M. R., Charmandaris V., Deharveng L., Zinnecker H., 1999, *A&A*, 352, 665
- Heydari-Malayeri M., Charmandaris V., Deharveng L., Meynadier F., Rosa M. R., Schaerer D., Zinnecker H., 2002, *A&A*, 381, 941
- Hibi Y., Shibai H., Kawada M., Ootsubo T., Hirashita H., 2006, *PASJ*, 58, 509
- Hirashita H., Ichikawa T. T., 2009, *MNRAS*, 396, 500
- Indebetouw R. et al., 2008, *AJ*, 136, 1442
- Israel F. P., Maloney P. R., Geis N., Herrmann F., Madden S. C., Poglitsch A., Stacey G. J., 1996, *ApJ*, 465, 738
- Israel F. P., Wall W. F., Raban D., Reach W. T., Bot C., Onk J. B. R., Ysard N., Bernard J. P., 2010, *A&A*, 519, A67
- James A., Dunne L., Eales S., Edmunds M. G., 2002, *MNRAS*, 335, 753
- Johansson L. E. B. et al., 1998, *A&A*, 331, 857
- Jones T. J., Hyland A. R., Straw S., Harvey P. M., Wilking B. A., Joy M., Gatley I., Thomas J. A., 1986, *MNRAS*, 219, 603
- Jones T. J., Woodward C. E., Boyer M. L., Gehr R. D., Polomski E., 2005, *ApJ*, 620, 731
- Juvela M., Ysard N., 2012, *A&A*, 539, A71
- Kennicutt R. C., Jr, 1998, *ApJ*, 498, 541
- Kennicutt R. C., Jr, Hodge P. W., 1986, *ApJ*, 306, 130
- Kennicutt R. C., Jr, et al., 2009, *ApJ*, 703, 1672
- Kim S., Staveley-Smith L., Dopita M. A., Sault R. J., Freeman K. C., Lee Y., Chu Y., 2003, *ApJS*, 148, 473
- Lazencic J. S., Whiteoak J. B., Klamer I., Harbison P. D., Kuiper T. B. H., 2002, *MNRAS*, 331, 969
- Lebouteiller V., Brandl B., Bernard-Salas J., Devost D., Houck J. R., 2007, *ApJ*, 665, 390
- Lee M.-Y. et al., 2012, *ApJ*, 748, 75
- Leroy A. K. et al., 2011, *ApJ*, 737, 12
- Li A., Draine B. T., 2001, *ApJ*, 554, 778
- Lisenfeld U., Ferrara A., 1998, *ApJ*, 496, 145
- Lucke P. B., Hodge P. W., 1970, *AJ*, 75, 171
- Madden S. C., Galliano F., Jones A. P., Sauvage M., 2006, *A&A*, 446, 877
- Mao R.-Q., Schulz A., Henkel C., Mauersberger R., Muders D., Dinh-V-Trung, 2010, *ApJ*, 724, 1336
- Markwardt C. B., 2009, in Bohlender D. A., Durand D., Dowler P., eds, *ASP Conf. Ser. Vol. 411, Astronomical Data Analysis Software and Systems XVIII*. Astron. Soc. Pac., San Francisco, p. 251
- Marleau F. R. et al., 2006, *ApJ*, 646, 929
- Mathis J. S., Rumpl W., Nordsieck K. H., 1977, *ApJ*, 217, 425
- Mathis J. S., Mezger P. G., Panagia N., 1983, *A&A*, 128, 212
- Meier D. S., Turner J. L., Crosthwaite L. P., Beck S. C., 2001, *AJ*, 121, 740
- Meixner M. et al., 2006, *AJ*, 132, 2268
- Meixner M. et al., 2010, *A&A*, 518, L71
- Meny C., Gromov V., Boudet N., Bernard J.-P., Paradis D., Nayral C., 2007, *A&A*, 468, 171
- Meynadier F., Heydari-Malayeri M., Deharveng L., Charmandaris V., Le Bertre T., Rosa M. R., Schaerer D., Zinnecker H., 2004, *A&A*, 422, 129
- Minamidani T. et al., 2008, *ApJS*, 175, 485
- Mizuno N., Rubio M., Mizuno A., Yamaguchi R., Onishi T., Fukui Y., 2001, *PASJ*, 53, L45
- Mizuno Y. et al., 2010, *PASJ*, 62, 51
- Nagata H., Shibai H., Takeuchi T. T., Onaka T., 2002, *PASJ*, 54, 695
- Nakajima Y. et al., 2005, *AJ*, 129, 776
- Oliveira J. M., van Loon J. T., Stanimirović S., Zijlstra A. A., 2006, *MNRAS*, 372, 1509
- Ott J. et al., 2008, *PASA*, 25, 129
- Pagel B. E. J., 2003, in Charbonnel C., Schaerer D., Meynet G., eds, *ASP Conf. Ser. Vol. 304, CNO in the Universe*. Astron. Soc. Pac., San Francisco, p. 187
- Paradis D. et al., 2010, *A&A*, 520, L8
- Pérez-González P. G. et al., 2006, *ApJ*, 648, 987
- Pineda J. L., Ott J., Klein U., Wong T., Muller E., Hughes A., 2009, *ApJ*, 703, 736
- Planck Collaboration, 2011, *A&A*, 536, A17
- Poglitsch A. et al., 2010, *A&A*, 518, L2
- Rantakyö F. T., Rubio M., Johansson L. E. B., Chini R., Merkel-Ferreira E., 2005, in Lidman C., Alloin D., eds, *ASP Conf. Ser. Vol. 344, The Cool Universe: Observing Cosmic Dawn*. Astron. Soc. Pac., San Francisco, p. 215
- Rieke G. H. et al., 2004, *ApJS*, 154, 25
- Rieke G. H., Alonso-Herrero A., Weiner B. J., Pérez-González P. G., Blaylock M., Donley J. L., Marcillac D., 2009, *ApJ*, 692, 556
- Sakon I. et al., 2006, *ApJ*, 651, 174
- Sandstrom K. M., Bolatto A. D., Draine B. T., Bot C., Stanimirović S., 2010, *ApJ*, 715, 701
- Sandstrom K. M. et al., 2012a, *ApJ*, 744, 20
- Sandstrom K. M. et al., 2012b, *ApJ*, preprint (arXiv:1212.1208)
- Sauvage M., Tuffs R. J., Popescu C. C., 2005, *Space Sci. Rev.*, 119, 313
- Serra Díaz-Cano L., Jones A. P., 2008, *A&A*, 492, 127
- Shetty R., Kauffmann J., Schnee S., Goodman A. A., Ercolano B., 2009, *ApJ*, 696, 2234
- Silverberg R. F. et al., 2003, in Melugin R. K., Roeser H.-P., eds, *Proc. SPIE Vol. 4857, Airborne Telescope Systems II*. SPIE, Bellingham, p. 195
- Staveley-Smith L., Kim S., Calabretta M. R., Haynes R. F., Kesteven M. J., 2003, *MNRAS*, 339, 87
- Subramanian S., Subramanian A., 2012, *ApJ*, 744, 128
- Testor G., Niemela V., 1998, *A&AS*, 130, 527
- Tosaki T., Miura R., Sawada T., Kuno N., Nakanishi K., Kohno K., Okumura S. K., Kawabe R., 2007, *ApJ*, 664, L27
- van Loon J. T. et al., 2010a, *AJ*, 139, 68
- van Loon J. T., Oliveira J. M., Gordon K. D., Sloan G. C., Engelbracht C. W., 2010b, *AJ*, 139, 1553
- Warren B. E. et al., 2010, *ApJ*, 714, 571
- Welty D. E., Jenkins E. B., Raymond J. C., Mallouris C., York D. G., 2002, *ApJ*, 579, 304
- Werner M. W., Becklin E. E., Gatley I., Ellis M. J., Hyland A. R., Robinson G., Thomas J. A., 1978, *MNRAS*, 184, 365
- Whaley C. H., Irwin J. A., Madden S. C., Galliano F., Bendo G. J., 2009, *MNRAS*, 395, 97
- Wong T. et al., 2009, *ApJ*, 696, 370
- Ysard N., Verstraete L., 2010, *A&A*, 509, A12
- Zhu Y.-N., Wu H., Li H.-N., Cao C., 2010, *Res. Astron. Astrophys.*, 10, 329
- Zubko V. G., Królowski J., Wegner W., 1996, *MNRAS*, 283, 577
- Zubko V., Dwek E., Arendt R. G., 2004, *ApJS*, 152, 211

This paper has been typeset from a  $\text{\LaTeX}$  file prepared by the author.