



HAL
open science

The case-area targeted rapid response strategy to control cholera in Haiti: a four-year implementation study

Stanislas Rebaudet, Gregory Bult, Jean Gaudart, Edwige Michel, Pierre Gazin, Claudia Evers, Samuel Beaulieu, Aaron Aruna Abedi, Lindsay Osei, Robert Barraï, et al.

► To cite this version:

Stanislas Rebaudet, Gregory Bult, Jean Gaudart, Edwige Michel, Pierre Gazin, et al.. The case-area targeted rapid response strategy to control cholera in Haiti: a four-year implementation study. PLoS Neglected Tropical Diseases, 2019, 13 (4), pp.e0007263. 10.1371/journal.pntd.0007263 . hal-02103482

HAL Id: hal-02103482

<https://hal.science/hal-02103482v1>

Submitted on 21 May 2019

HAL is a multi-disciplinary open access archive for the deposit and dissemination of scientific research documents, whether they are published or not. The documents may come from teaching and research institutions in France or abroad, or from public or private research centers.

L'archive ouverte pluridisciplinaire **HAL**, est destinée au dépôt et à la diffusion de documents scientifiques de niveau recherche, publiés ou non, émanant des établissements d'enseignement et de recherche français ou étrangers, des laboratoires publics ou privés.



Distributed under a Creative Commons Attribution 4.0 International License

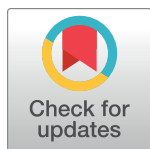
RESEARCH ARTICLE

The case-area targeted rapid response strategy to control cholera in Haiti: a four-year implementation study

Stanislas Rebaudet^{1,2,3*}, Gregory Bulit⁴, Jean Gaudart^{1,5}, Edwige Michel⁶, Pierre Gazin⁷, Claudia Evers⁴, Samuel Beaulieu⁴, Aaron Aruna Abedi^{4,8}, Lindsay Osei^{1,4}, Robert Barrais⁶, Katilla Pierre⁶, Sandra Moore⁹, Jacques Boncy¹⁰, Paul Adrien⁶, Florence Duperval Guillaume¹¹, Edouard Beigbeder⁴, Renaud Piarroux¹²

1 Assistance Publique–Hôpitaux de Marseille (AP-HM), Marseille, France, **2** Hôpital Européen Marseille, Marseille, France, **3** Institut Pierre-Louis d'Epidémiologie et de Santé Publique, Sorbonne Université, INSERM, Paris, France, **4** United Nations Children's Fund, Haiti, **5** Aix Marseille Univ, IRD, INSERM, SESSTIM, Marseille, France, **6** Direction d'Epidémiologie de Laboratoire et de Recherche, Ministère de la Santé Publique et de la Population, Haiti, **7** Institut de Recherche pour le Développement (IRD), Marseille, France, **8** Direction de la Lutte contre la Maladie, Ministère de la Santé Publique, Kinshasa, Democratic Republic of the Congo, **9** Aix Marseille Univ, Marseille, France, **10** Laboratoire National de Santé Publique, Ministère de la Santé Publique et de la Population, Haiti, **11** Ministère de la Santé Publique et de la Population, former Minister, Delmas, Haiti, **12** Sorbonne Université, INSERM, Institut Pierre-Louis d'Epidémiologie et de Santé Publique, AP-HP, Hôpital Pitié-Salpêtrière, Paris, France

* stanreb@gmail.com



OPEN ACCESS

Citation: Rebaudet S, Bulit G, Gaudart J, Michel E, Gazin P, Evers C, et al. (2019) The case-area targeted rapid response strategy to control cholera in Haiti: a four-year implementation study. *PLoS Negl Trop Dis* 13(4): e0007263. <https://doi.org/10.1371/journal.pntd.0007263>

Editor: Emily Gurley, Johns Hopkins University Bloomberg School of Public Health, UNITED STATES

Received: May 23, 2018

Accepted: February 25, 2019

Published: April 16, 2019

Copyright: © 2019 Rebaudet et al. This is an open access article distributed under the terms of the [Creative Commons Attribution License](https://creativecommons.org/licenses/by/4.0/), which permits unrestricted use, distribution, and reproduction in any medium, provided the original author and source are credited.

Data Availability Statement: All relevant data are publicly available from the OSF (Open Science Framework) (accession number osf.io/en9vp/?view_only=2ce65ed8b2f64c14a606e3c36d0ac311)

Funding: This study was supported by the United Nations Children's Fund (UNICEF)-Haiti, to a lesser extent the Assistance Publique – Hôpitaux de Marseille (AP-HM), the Ministry of Public Health and Population (MSPP) of Haiti, and the French

Abstract

Background

In October 2010, Haiti was struck by a large-scale cholera epidemic. The Haitian government, UNICEF and other international partners launched an unprecedented nationwide alert-response strategy in July 2013. Coordinated NGOs recruited local rapid response mobile teams to conduct case-area targeted interventions (CATIs), including education sessions, household decontamination by chlorine spraying, and distribution of chlorine tablets. An innovative *red-orange-green* alert system was also established to monitor the epidemic at the communal scale on a weekly basis. Our study aimed to describe and evaluate the exhaustiveness, intensity and quality of the CATIs in response to cholera alerts in Haiti between July 2013 and June 2017.

Methodology/principal findings

We analyzed the response to 7,856 weekly cholera alerts using routine surveillance data and severity criteria, which was based on the details of 31,306 notified CATIs. The odds of CATI response during the same week (exhaustiveness) and the number of complete CATIs in responded alerts (intensity and quality) were estimated using multivariate generalized linear mixed models and several covariates. CATIs were carried out significantly more often in response to *red* alerts (adjusted odds ratio (aOR) [95%-confidence interval, 95%-CI], 2.52 [2.22–2.87]) compared with *orange* alerts. Significantly more complete CATIs were carried out in response to *red* alerts compared with *orange* alerts (adjusted incidence ratio (aIR),

Institut de Recherche pour le Développement (IRD). Authors from UNICEF-Haiti (GB, CE, SB, EB) played a role in data collection and interpretation, decision to publish, as well as preparation of the manuscript. Authors from MSPP (EM, RB, KP, JB, PA, DF, FDG) played a role in data collection and interpretation, decision to publish, as well as preparation of the manuscript. Authors from APHM (SR, JG, LO and RP) played a role in study design, data collection and analysis, decision to publish, and preparation of the manuscript. The author from IRD (PG) played a role in data collection and interpretation, decision to publish, as well as preparation of the manuscript. The funders had no role in study design, data collection and analysis, decision to publish, or preparation of the manuscript.

Competing interests: I have read the journal's policy and the authors of this manuscript have the following competing interests: For authors working for the United Nations Children's Fund, Haiti (GB, CE, SB and EB): UNICEF-Haiti helped the Haitian Ministry of Health and Population (MSPP) to implement the alert-response strategy to control cholera in Haiti. UNICEF-Haiti received funds from several governments and institutions such as ECHO, DFID and CERF. These institutions had no involvement in study design, collection analysis and interpretation of data, writing of the report, and decision to submit the paper for publication. For authors working for Assistance Publique – Hôpitaux de Marseille (SR, JG, LO and RP): APHM, a French university-hospital, was mandated by the Haitian Ministry of Health and UNICEF-Haiti and granted by UNICEF-Haiti to provide the alert-response strategy to control cholera with prospective epidemiological analysis and evaluation. This study aimed to present and assess this strategy. Some UNICEF-Haiti staff played a role in study design, data collection and analysis, decision to publish, and preparation of the manuscript. For authors working for Ministry of Public Health and Population (EM, RB, KP, JB, PA and FDG): To implement the alert-response strategy to control cholera in Haiti, MSPP received material and financial support from UNICEF-Haiti. This study aimed to present and assess this strategy. Some UNICEF-Haiti staff played a role in study design, data collection and analysis, decision to publish, and preparation of the manuscript. For authors who were temporally contracted by UNICEF-Haiti (AAA, LO and RB): In accordance with their respective institutions, these four authors were contracted during a few months by UNICEF-Haiti as external consultants to perform prospective epidemiological analysis and evaluation of the alert-response strategy to control

1.85 [1.73–1.99]). Over the course of the eight-semester study, we observed a significant improvement in the exhaustiveness (aOR, 1.43 [1.38–1.48] per semester) as well as the intensity and quality (aIR, 1.23 [1.2–1.25] per semester) of CATI responses, independently of funds available for the strategy. The odds of launching a CATI response significantly decreased with increased rainfall (aOR, 0.99 [0.97–1] per each accumulated cm). Response interventions were significantly heterogeneous between NGOs, communes and departments.

Conclusions/significance

The implementation of a nationwide case-area targeted rapid response strategy to control cholera in Haiti was feasible albeit with certain obstacles. Such feedback from the field and ongoing impact studies will be very informative for actors and international donors involved in cholera control and elimination in Haiti and in other affected countries.

Author summary

Cholera is a potentially deadly diarrheal disease caused by toxin-secreting strains of *Vibrio cholerae*. The bacterium can trigger severe epidemics in countries with limited access to potable water and sanitation. Hygiene promotion, proper sanitation and improved access to safe drinking water are essential to control cholera. However, very few reports have described and evaluated the implementation of such activities in the field. Since October 2010, Haiti has been affected by one of the most severe cholera epidemics of the past few decades. In this report, we describe and evaluate the implementation of the original nationwide case-area targeted interventions (CATIs) response strategy, which was launched in July 2013 after years of insufficient response coordination and diminishing efforts to control cholera outbreaks in affected communities. Rapid implementation of education sessions, household decontamination, soap distribution and water chlorination in affected communities proved challenging but possible, even in a mountainous and decentralized country such as Haiti with tens of thousands of suspected cholera cases per year. Evaluation of the impact of the CATI-based strategy on the cholera epidemic is underway. Together with other components of a multi-sectoral approach, this rapid response strategy appears to be critical to eventually eliminate cholera in Haiti.

Introduction

Cholera was accidentally imported into Haiti in October 2010 [1,2]. The country has consequently experienced a massive epidemic, with a total of 819,899 suspected cases and 9,791 cholera-related deaths by January 26, 2019 according to the Haitian Ministry of Health (MOH, acronyms summarized in [S1 Table](#)) [3]. Following international recommendations [4], Haitian authorities and services, together with numerous international and non-governmental organizations (NGOs), have struggled to mitigate the death toll and case incidence by supporting both cholera treatment institutions as well as safe water, improved sanitation and hygiene practice (WaSH) efforts in affected communities [5–8]. Cholera incidence gradually receded in 2011–2012, with alternating troughs and peaks influenced by seasonal rainfall [9]. Although Haiti was considered the country most affected by cholera worldwide [10], emergency funds

cholera. Some UNICEF-Haiti staff played a role in study design, data collection and analysis, decision to publish, and preparation of the manuscript. These authors have with no competing interest: PG, SM

for cholera declined and most organizations eventually interrupted or drastically reduced activities in 2012 [7,11]. During February 2013, the Haitian government, Pan American Health Organization (PAHO), United Nations Children’s Fund (UNICEF) and the Centers for Disease Control and Prevention (CDC) launched an ambitious National Plan for the Elimination of Cholera in Haiti 2013–2022 [12]. Over \$1.5 billion USD of the total \$2.2 billion USD was designated to invest in Haitian water and sanitation infrastructures, as only 68% of households obtained drinking water from improved sources, 26% of households had access to improved sanitation facilities and 34% of households had water and soap available for handwashing [13]. Two pilot oral cholera vaccine (OCV) campaigns were carried out in 2012, vaccinating approximately 100,000 people in both rural and urban settings [14,15]. Two additional campaigns were planned for 2013 [16].

The elimination plan also intended to improve surveillance activities and ensure adequate outbreak response [12]. To interrupt local cholera outbreaks at an early stage, UNICEF supported the MOH and the Haitian National Directorate for Water and Sanitation (DINEPA) to launch a nationwide coordinated cholera alert-response strategy in July 2013. Analogous to forest fire management [17,18], this program aimed to rapidly detect local cholera outbreaks and send response teams to affected communities. Case-area targeted interventions (CATIs) involved detection of additional cases, house decontamination, awareness and health education concerning risk factors and methods of cholera prevention and management, soap distribution, and water chlorination at the household level or directly at water sources. At the central level, the epidemic was monitored using a simple and unique tri-color cholera alert system, which is described in detail in a preprint manuscript [19].

Based on the identified risk factors and the growing evidence of WaSH efficiency to control cholera [20–23] and diarrhea in developing countries or during humanitarian crises [24–27], hygiene promotion and improved access to safe drinking water have long been recommended to control cholera transmission [4, 28–30]. Interventions targeting the residential area of cholera cases and nearby neighbors appear important to control cholera outbreaks, as cholera risk has been shown to increase among neighbors living within a few dozen meters of cases during the first week following disease onset [31,32]. A recent modeling study has also supported the potential impact of early CATIs in response to cholera outbreaks [33]. However, feedback from the field has been scarce. Reported activities have usually been implemented at a local level, during short time periods, and described with few details [7,8, 29,34–47].

The aim of the present study was to describe and evaluate the implementation of CATIs to control cholera outbreaks in Haiti using output indicators [48] from July 2013 (epidemiological week 27) to June 2017 (week 26). Evaluation of the effectiveness and impact [48] of this strategy is outside the scope of the current paper, and dedicated studies are underway.

Methods

Rapid case-area targeted response interventions (CATIs) to control cholera outbreaks

The national alert-response strategy to control cholera in Haiti was launched in July 2013 to complement the multi-sectoral national plan for the elimination of cholera in Haiti 2013–2022 [12], which includes long-term WaSH infrastructure, medical care and OCV. The alert-response strategy aims to improve key aspects of infectious disease control in the country (Table 1 and S1 Fig): coordination of cholera control activities; epidemiologic surveillance of cholera; cholera prevention in the most vulnerable areas; and most importantly prompt and exhaustive case-area targeted response interventions (CATIs). To establish CATI teams, UNICEF established partnership with at least one WaSH NGO for each of the 10 administrative

Table 1. Activities included in the national alert-response strategy to control cholera in Haiti and core methodology of case-area targeted response interventions.

Activities included in the national alert-response strategy to control cholera in Haiti		Actors
Improve coordination		
	of activities implemented by national, international, governmental and non-governmental partners involved in cholera control	MOH, DINEPA, UNICEF, PAHO, NGOs
Improve cholera surveillance		
	in the community and in cholera treatment institutions monitoring of outbreaks via an alert detection system at the central level	MOH, UNICEF, PAHO, NGOs
Case-area targeted response interventions		
Triggers	Every suspected case reported in a treatment center Rumors of cholera outbreaks	
Deadline	Max. 48 hours after case admission to a treatment center	
Core activities	Surveillance: verification of data in register books; identification of affected sites and neighborhoods Field investigations: extent of outbreak, outbreak origin, aggravating factors, contacts and suspected cases Visits to affected families and neighbors (minimum five households depending on the local geography) ^a Decontamination by chlorine spraying of latrines and other potentially contaminated surfaces ^a Education sessions about cholera transmission modes and methods of prevention and initial care ^a Distribution of one cholera kit per household: five soaps, five sachets of oral rehydration salts, and approximately 115 chlorine tablets (80 or 150 Aquatabs 33 mg in urban settings in rural areas, respectively) ^a Establishment of manual bucket chlorination at drinking water sources during one or more weeks when possible ^a Repair and extra-chlorination of water supply systems when possible ^a	Response teams of WaSH NGO ^b (mainly contracted by UNICEF), MOH Rapid response teams (EMIRAs)
Additional medical activities	Primary care of community cases Chemoprophylaxis of close contacts with one dose of doxycycline (300 mg) for non-pregnant adults only Nursing support to cholera treatment institutions	EMIRAs Medical NGOs ^b
Cholera prevention		
	in the most vulnerable areas Mass education sessions, communication for development (C4D) Rehabilitation or installation of water supply infrastructures Oral cholera vaccine campaigns	MOH, DINEPA UNICEF, PAHO NGOs

^a activities analyzed in the study

^b see S1 Table for a list of NGOs

DINEPA, National Directorate for Water and Sanitation; EMIRA, MOH departmental rapid response mobile teams; MOH, Ministry of Health (*Ministère de la Santé Publique et de la Population*); NGO, non-governmental organization; PAHO, Pan American Health Organization; UNICEF, United Nations Children’s Fund; WaSH, water sanitation and hygiene promotion

<https://doi.org/10.1371/journal.pntd.0007263.t001>

departments (S1 Table), which hired rapid response mobile teams comprised of local Haitian staff. They were encouraged to work in close collaboration with departmental health directorates and cholera treatment centers to obtain and share epidemiological cholera data and outbreak rumors on a daily basis (S1 Fig). Mobile teams were requested to respond to every suspected cholera case or death and every plausible rumor via CATI at the affected household and neighbors within 48 hours, based on the average cholera incubation period [49]. The teams were nevertheless encouraged to respond the same day if possible. In case of several concomitant outbreaks, mobile teams were asked to prioritize the most-affected areas. The response intervention methodology, which was established with the MOH and partners [50], is described in Table 1. House decontamination by chlorine spraying of latrines and other potentially contaminated surfaces was proposed to visited households, although the efficacy

and impact of this method have never been established [30], and are likely limited to a few hours due to short-term vibrio survival [51]. CATIs were prospectively reported to UNICEF by mobile teams using standardized online Google spreadsheets. A few other organizations implementing CATIs and funded by other agencies also joined the strategy and reported their activities to UNICEF (S1 Table).

To bolster institutional response capacities, UNICEF and the World Bank also provided additional material, funds and human resources to the MOH. The MOH established its own departmental response teams (EMIRAs, *Equipes Mobiles d'Intervention Rapide*) on March 2014 to conduct CATIs and additional medical activities (Table 1), such as chemoprophylaxis of contacts living in the same house as cholera cases with one dose of doxycycline (300 mg) for non-pregnant adults only [4,52,53]. ECHO (European Commission Humanitarian Office) and PAHO (Pan American Health Organization) also contracted medical NGOs with terms of reference similar to that of the EMIRAs (Tables 1 and S1). In contrast to WaSH teams supported by UNICEF, reporting of EMIRA and mobile medical team activities was not systematic.

Field interventions involving both WaSH/medical and governmental/non-governmental staff were strongly encouraged and were carried out frequently. WaSH NGOs and EMIRAs typically formed common mixed mobile teams implementing core and supplemental medical activities (Table 1). Mobile teams were asked to repeat response interventions in the community until every suspected cholera case was addressed. In 2015, they were also requested to conduct surveys at targeted households to assess water treatment two weeks after the initial response intervention. These interventions are demonstrated in a short online video [54].

Data collection

Cholera alerts and case-area targeted interventions. The cholera alert system has been detailed in a preprint article [19]. Alerts are listed in S1 Database, and they were computed for each of the 140 administrative communes of Haiti (S1 Fig) and the 209 weeks between July 2013 and June 2017, based on anonymized consolidated databases of institutional suspected cholera cases (acute watery diarrhea with or without vomiting, irrespective of patient age), cholera deaths and stool culture results of the MOH, and criteria listed in S2 Table. Reports of the CATIs carried out by mobile WaSH teams included date, location (*i.e.*, commune, communal section, locality) and activities. We considered a CATI was complete if the corresponding report included a precise location, an education session, house decontamination, and either distribution of chlorine tablets, establishment of manual bucket chlorination at drinking water sources, or repair and extra-chlorination of water supply systems. The number of incomplete and complete CATIs are listed in S1 Database. For each CATI, mobile teams mentioned the institution that notified responded cases so that it was possible to link CATIs with cholera alerts by administrative commune and by week, even if CATIs were sometimes carried out in communes different from that where patients were treated. Unfortunately, targeted interventions performed by EMIRAs and medical NGO mobile teams could not be exhaustively quantified and described, although most WaSH interventions involved medical and governmental staff. Notably, exhaustive information concerning the use of doxycycline chemoprophylaxis was not available for analysis.

Covariates. To assess whether mobile teams prioritized more severe outbreaks, we distinguished *red* and *orange* alerts. To analyze the variation in CATI implementation in response to cholera alerts over time, we divided the four-year study period into eight semesters (first and last 26 weeks of every year). As response implementation may have been heterogeneous between NGOs, we identified the NGO responsible for response to alerts every week in every commune, using information provided by UNICEF and intervention reports. NGOs

responsible for outbreak response changed over time, and NGOs could be responsible for communes in several departments at the same time (S1 Table). To assess the effect of weekly available funds on CATI implementation, we distributed all UNICEF disbursements for NGO and MOH mobile teams, in cash or in response items (e.g., chlorine, soap, buckets, oral rehydration salts), over the course of the 209-week study period. We also obtained population estimates for all 140 administrative communes from the Haitian Institute of Statistics and Informatics [55]. Commune remoteness was estimated by calculating distances from the main town or village of each commune to the capital Port-au-Prince and to the capital of the local department, using the OpenStreetMap road network [56]. As terrain may hinder CATI implementation, we identified mainly mountainous communes from a map of agro-ecological zones provided by FAO [57]. We identified communes that received mass OCV between 2012 and 2017, as this may have influenced CATI efforts. Finally, satellite estimates of daily-accumulated rainfall (area-averaged TRMM_3B42_daily v7) were extracted from the National Oceanic and Atmospheric Administration (NOAA) website covering the entire surface of Haiti and the centroid of all 140 communes [58]. The main characteristics of the communes in Haiti are summarized in S1 Database.

Ethics statement

The protocol was authorized by the Haiti MOH National Bioethics Comity (authorization number #1718–30).

Data analysis

As the cholera alert system was launched to prospectively monitor the epidemic, we used cholera alerts as an outbreak proxy to retrospectively evaluate the implementation of the case-area targeted response strategy. Hence, we could detect the capacity of response teams to directly obtain epidemiological information from the community, treatment institutions and departmental health directorates (S1 Fig). We then assessed three output indicators of the CATIs in response to cholera alerts: exhaustiveness, intensity and quality.

Analysis of the exhaustiveness of CATIs in response to cholera alerts. In an initial analysis, response exhaustiveness was defined as the proportion of retrospective *red* or *orange* alerts that triggered a response by at least one targeted intervention, either complete or incomplete, during the same epidemiological week. To illustrate response exhaustiveness, we plotted and mapped the numbers of responded and non-responded alerts per week and per commune, respectively. We then assessed the effect of several covariates on response exhaustiveness: administrative commune in alert; administrative department of the commune; responsible NGO; alert level (*red* versus *orange*); linear variation in response implementation over the course of eight semesters; UNICEF disbursements for CATIs during the week of the alert; weekly accumulated rainfall in the commune; commune population; OCV campaign in the commune; distance from Port-au-Prince; distance from the department capital; and terrain type (mountainous or non-mountainous). We used generalized linear mixed models (GLMMs) with alert response (responded vs non-responded alert) as an independent variable and a binomial distribution (logistic model) (Eq 1) [59].

$$E[y_{ij}|v_i, x_{ij}, z_{ij}] = g^{-1}(x'_{ij}\beta + z'_{ij}v_i) \quad (\text{Eq 1})$$

where y represents the outcome variable, x represents the vector of covariates with fixed effect β , z represents the vector of covariates with random effect v ; $E[.]$ represents the expectation of the conditional distribution of the outcome variable given the fixed and random effects, and g

(.) represents the canonical link (*i.e.*, the logit function for binomial distributions or the log function for negative-binomial ones).

For the univariate analyses of communes, departments and NGOs, each covariate was modeled separately as a unique random effect. For the univariate analyses of other covariates, we systematically included communes nested within departments as a common random effect and NGOs as a second random effect in models where each covariate was modeled as a unique fixed effect variable. For the multivariate analysis, we included the fixed effect variables for which *p*-values were less than 0.25 [60], communes nested within departments as a common random effect, and NGOs as a second random effect. The models estimated the crude odds ratio (cOR) and adjusted odds ratio (aOR) of response to alerts as well as 95% confidence intervals (95%-CI) associated with each covariate. A *p*-value of less than 0.05 indicated statistical significance.

Analysis of the intensity and quality of the CATI response to cholera alerts. In a second analysis restricted to responded alerts, response intensity and quality was defined together as the incidence of complete targeted interventions carried out per alert during the same epidemiological week. Using GLMMs with the number of complete CATIs per alert as an independent variable and a negative-binomial distribution (Eq 1) [59], we applied the same analysis procedure as that applied for response exhaustiveness. Models estimated the crude incidence ratio (cIR) and adjusted incidence ratio (aIR) for complete CATIs in responded alerts and 95% confidence intervals (95%-CI) associated with each covariate.

Software. Data management was performed using Microsoft Excel for Mac v15.32. QGIS v3.0.3 [61] was used to calculate distance matrices and draw the map. Graph design and statistical analyses were performed using R Studio version 1.1.453 for Mac [62] with R version 3.4.2 for Mac [63] and the {ggplot2} [64] and {lme4} [65] packages.

Results

Brief description of the epidemic and the response strategy

Between the launch of the nationwide alert-response strategy in July 2013 (week 27) and the end of this 209-week study period in June 2017 (week 26), a total of 149,690 suspected cholera cases were recorded throughout Haiti (Fig 1 Panel A). As a result, a total of 7,856 cholera alerts were identified in the country, including 4,365 *red* alerts and 3,491 *orange* alerts (Fig 1 Panel B) [19]. Alerts exhibited a temporal evolution consistent with the dynamics of the epidemic (Fig 1 Panels A and B). Alert distribution was geographically heterogeneous, as *red* and *orange* alerts mainly clustered in the departments of Ouest (especially in Port-au-Prince Metropolitan Area), Centre and Artibonite (S3 Table).

During the same period, UNICEF disbursed \$25.4 million USD to support CATIs implemented by WaSH NGOs and MOH mobile teams (EMIRAs) as well as \$2.0 million USD in response items (*i.e.*, chlorine, soaps, buckets, oral rehydration salts) (Fig 1 Panel C). UNICEF delivered 3.3 million soaps, 140 million Aquatabs (33 mg tablets) and 3.6 million oral rehydration salt sachets to UNICEF partner organizations. These disbursements were not continuous over the study period (Fig 1 Panel C), and they appeared driven by various factors as detailed in S1 Text.

In four years, a total of 31,306 CATIs in response to cholera cases were notified by UNICEF WaSH partners (Fig 1 Panel C). Mobile teams performed education sessions to a total of 2.9 million people, decontaminated 179,830 houses, distributed chlorine tablets to 757,693 households, distributed soaps to 593,494 households, and supplied chlorination at 2,282 water sources or networks. A total of 25,202 CATIs (81%) was thus classified as complete. Over the

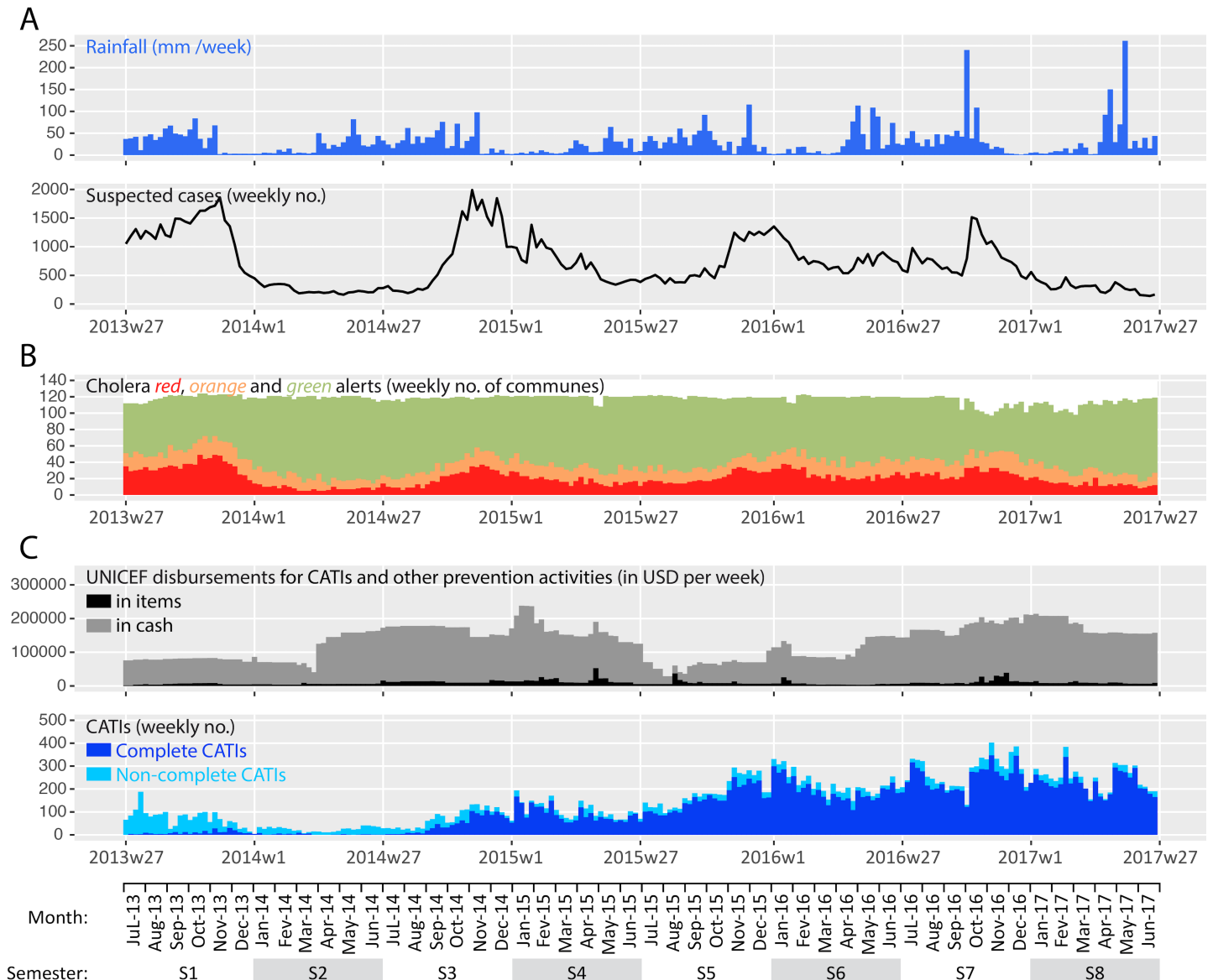


Fig 1. Weekly evolution of accumulated rainfall and cases (Panel A), retrospective cholera alerts (Panel B), and implementation of the response strategy by UNICEF (Panel C) from mid-2013 (week 27) to mid-2017 (week 26). Cumulated rainfall data averaged over the entire country was obtained from NOAA. Suspected cholera case numbers were obtained from the routine surveillance databases provided by the MOH. Retrospective cholera alerts were computed for a preprint manuscript, based on cases, deaths and stool cultures positive for *Vibrio cholerae* O1 [19]. Details on UNICEF disbursements and rapid CATIs were provided by UNICEF (S1 Database).

<https://doi.org/10.1371/journal.pntd.0007263.g001>

course of the four-year study period, the overall incidence of CATIs and complete CATIs increased considerably (Fig 1 Panel C).

Exhaustiveness of CATIs in response to cholera alerts

Between July 2013 and June 2017, mobile WaSH teams reported 31,306 CATIs to control cholera throughout the country, of which 61% were conducted in communes in red alert and 14% were carried out in communes in orange alert (data not shown). The remaining CATIs targeted

green alert communes with sporadic cases (12%), *green* alert communes with no cases (7%) or communes with no data (6%).

Between July 2013 and June 2017, mobile WaSH teams responded to 49% (3,824) of the 7,856 alerts during the same week. This proportion increased from 15% to 75% between the first and last semester of the four-year study period (Fig 2 Panel A, S3 Table, S2 Fig Panel A). Overall, the proportion of responded alerts appeared better for *red* alerts (58%) than for *orange* (37%) alerts (S3 Table and S2 Fig Panel A). The proportion of responded alerts appeared very heterogeneous between communes (Fig 2 Panel B). It ranged from 33% to 63% between departments. It ranged from 6% to 90% between NGOs (S3 Table and S2 Fig Panel A).

Using multivariate GLMMs, the odds of launching a CATI in response to cholera alerts (exhaustiveness) appeared significantly influenced by the commune, the department and the responsible NGO (common *p*-value of random effects < 0.01) (Table 2). Exhaustiveness of CATI response was significantly higher for *red* alerts than for *orange* alerts (adjusted odds ratio (aOR), 2.52 [2.22–2.86]; *p*-value < 0.0001). Exhaustiveness of CATI response significantly increased over the course of the study period (aOR, 1.43 [1.39–1.48] per semester; *p*-value < 0.0001) (Table 2), significantly decreased with accumulated rainfall (aOR, 0.99 [0.97–1] per each accumulated cm; *p*-value < 0.05), and tended to decrease when the alert was far from the department capital (aOR, 0.94 [0.88–1] per 10 km; *p*-value, 0.06). However, response exhaustiveness was not linearly dependent on UNICEF disbursements for CATIs. Response exhaustiveness was not significantly lower when the alert was far from Port-au-Prince, in a more populated commune, or in a mountainous commune. Finally, we found that response exhaustiveness was not significantly influenced by a previous OCV campaign (Table 2).

Intensity and quality of CATIs in response to cholera alerts

In each of the 3,824 *red* or *orange* responded alerts, an average of 545 persons (standard deviation (SD), 1,551) were reached by education sessions, 37 houses (SD, 68) were decontaminated by chlorine spraying, 141 families (SD, 579) received chlorine tablets for household water treatment, and an average of 0.4 water sources (SD, 2.6) were chlorinated during the same week (S3 Table). Overall, responded alerts thus received an average of 5.1 complete targeted interventions (SD, 7.8) during the same week. The mean number of complete CATIs per responded alert appeared better for *red* (6.4 [SD, 8.8]) than for *orange* (2.7 [4.4]) alerts (S3 Table and S2 Fig Panel B). This number increased from 0.7 (SD, 1.7) to 7.8 (10.6) between the first and last semester of the four-year study period (S3 Table and S2 Fig Panel B). The mean number of complete CATIs per responded alert ranged from 2.8 (3.1) to 10.4 (12.8) between departments and from 0 (0) to 11 (11.2) between NGOs (S3 Table and S2 Fig Panel B).

Using multivariate GLMMs, the incidence of complete CATIs conducted in responded alerts appeared significantly influenced by the commune, the department and the responsible NGO (common *p*-value of random effects < 0.001) (Table 3). The intensity and quality of CATI response was significantly higher for *red* alerts than for *orange* alerts (adjusted incidence ratio (aIR), 1.85 [1.72–1.98]; *p*-value < 0.0001). Response intensity and quality significantly increased over the course of the study period (aIR, 1.22 [1.20–1.25] per semester; *p*-value < 0.0001). Furthermore, response intensity and quality was greater in more populated communes (aIR, 1.02 [1.01–1.02] per 10,000 inhab.; *p*-value < 0.0001) (Table 3). However, the incidence of complete CATIs in responded alerts was not significantly influenced by accumulated rainfall, UNICEF disbursements for CATIs, previous OCV campaigns, distance from Port-au-Prince or department capital, or mountainous terrain (Table 3).

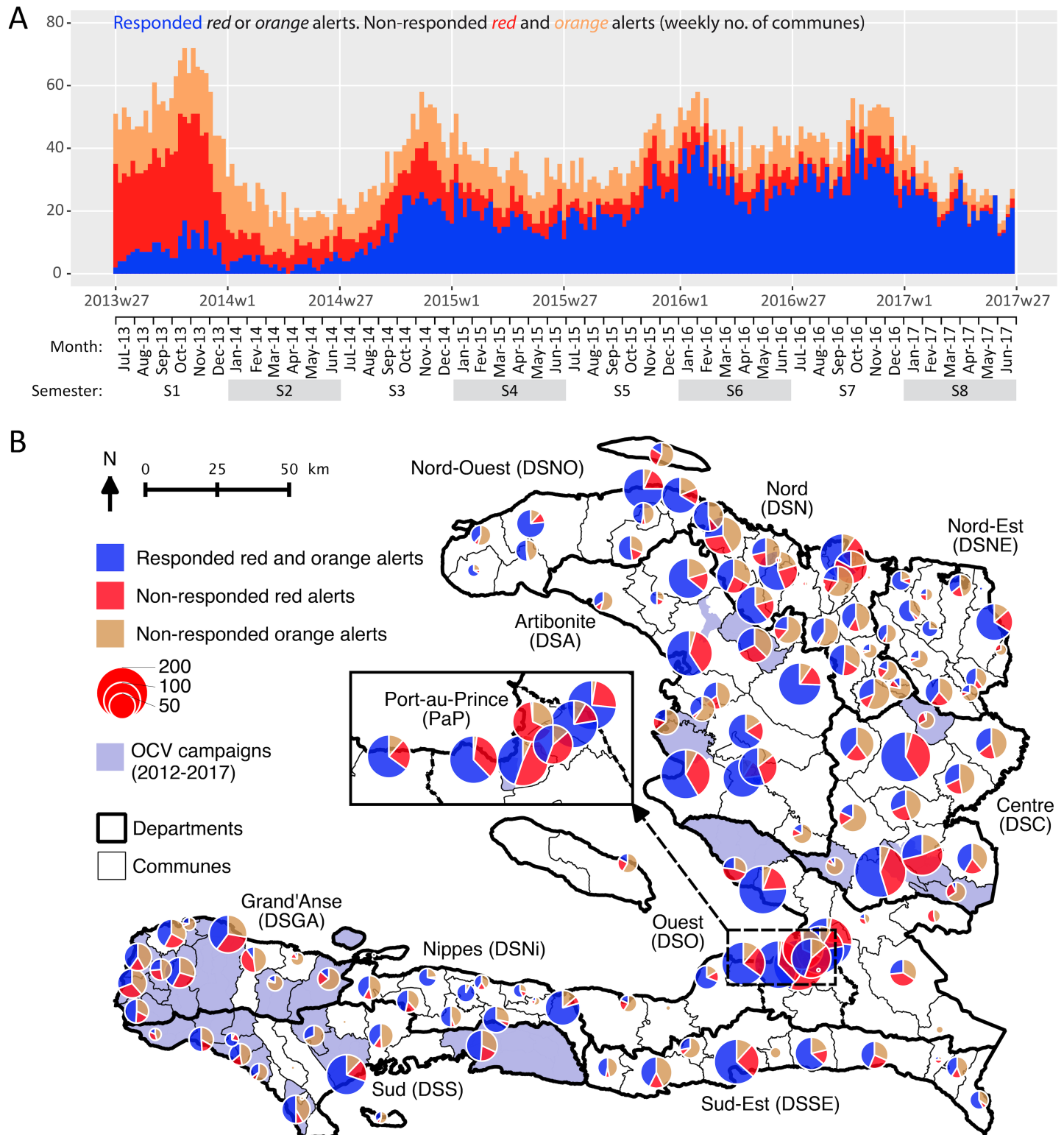


Fig 2. Case-area targeted interventions (CATIs) in response to cholera alerts during the same week, from July 2013 to June 2017: weekly number (Panel A) and commune number (Panel B) of responded and non-responded red and orange alerts. Retrospective cholera alerts were computed based on case numbers, death numbers and stool cultures positive for *Vibrio cholerae* O1 [19]. CATI records were provided by UNICEF. Oral cholera vaccine (OCV) records were provided by the MOH. The map was created using QGIS v3.0.3.

<https://doi.org/10.1371/journal.pntd.0007263.g002>

Table 2. Exhaustiveness of case-area targeted interventions (CATIs) in response to cholera alerts from July 2013 to June 2017: Factors associated with the odds of CATI response to alerts (logistic mixed models).

	Red and orange alerts		Univariate analysis ^{bc}		Multivariate analysis ^d	
	Responded	Non-responded	cOR [95%-CI]	p-value	aOR [95%-CI]	p-value
Number of alerts (%)	3824 (49%)	4032 (51%)				
Commune				<0.0001 ^b		
Department ^a				0.79 ^b		
NGO responsible for CATI ^a				0.3 ^b		
Commune, department and NGO random effects ^d						<0.01
Alert level, red vs. orange ^a			2.22 [1.97–2.50]	<0.0001 ^c	2.52 [2.22–2.86]	<0.0001
Semester since mid-2013 ^a			1.42 [1.37–1.46]	<0.0001 ^c	1.43 [1.38–1.48]	<0.0001
Weekly UNICEF disbursements for CATIs, mean (SD; \$10,000 USD)	12.9 (4.7)	12 (4.7)	1.06 [1.05–1.07]	<0.0001 ^c	1.01 [1.00–1.02]	0.22
Weekly accumulated rainfall in the commune, mean (SD; cm)	12.3 (14.2)	6.4 (9.6)	0.99 [0.98–1.00]	0.24 ^c	0.99 [0.97–1]	<0.05
Population of the commune, mean (SD; 10,000 inhabitants)	12.3 (14.2)	6.4 (9.6)	1.03 [0.68–1.81]	<0.01 ^c	1.01 [1–1.03]	0.11
OCV in the commune before or during the study period, number (%)	935 (24%)	1091 (27%)	1.11 [0.68–1.81]	0.67 ^c	ND	ND
Distance from the capital Port-au-Prince, mean (SD; 10 km)	14.5 (8.1)	16.8 (7.8)	1.02 [0.97–1.08]	0.44 ^c	ND	ND
Distance from the department capital, mean (SD; 10 km)	3.4 (2.7)	4.3 (3)	0.92 [0.86–0.98]	<0.01 ^c	0.94 [0.88–1]	0.06
Mountainous commune, no. of alerts (%)	1456 (38%)	1646 (41%)	1.01 [0.68–1.50]	0.96 ^c	ND	ND

Comparisons between responded and non-responded alerts were estimated using generalized linear mixed models with a binomial distribution.

^a Response rates for each class are summarized in S3 Table provided as supplementary information

^b For each of these univariate analyses, communes, departments or NGOs was modeled as a unique random effect variable.

^c For these univariate analyses, communes, departments and NGOs were modeled as random effect variables, with communes nested within departments. Models provided a common P-value for both random effects.

^d For the multivariate analysis, the model included communes, departments and NGOs as random effect variables, with communes nested within departments, and all fixed variables for which univariate P-value was <0.25 The model provided a common P-value for random effect variables.

SD, standard deviation; cOR, crude odds ratio; aOR, adjusted odds ratio; 95%-CI, 95% confidence interval; ND, no data (variables not included in the multivariate analysis).

<https://doi.org/10.1371/journal.pntd.0007263.t002>

Discussion

Our analysis of 31,306 CATIs carried out by mobile WaSH teams between July 2013 and June 2017 shows that implementation of the first nationwide coordinated alert-response strategy to control cholera in Haiti was feasible at an annual cost of less than \$1 USD per inhabitant. Response exhaustiveness, intensity and quality were initially insufficient but markedly improved over the course of the study period, with 75% of alerts receiving a response in the same week during the last semester of this four-year study. This amelioration was independent of available funds, which suggests that a significant buffer period was necessary to establish coordination between response partners and the MOH, to organize and commit mobile teams, and to secure administrative support for the strategy, as described in S1 Text. Response interventions were significantly heterogeneous between contracted NGOs, which was likely due to disparities in NGO engagement and capacity to coordinate activities, notably with peripheral health authorities. Response interventions were also heterogeneous between

Table 3. Intensity and quality of case-area targeted interventions (CATIs) in response to cholera alerts from July 2013 to June 2017: Factors associated with the incidence of complete CATIs per responded alert (negative-binomial mixed models).

	Univariate analysis ^{bc}		Multivariate analysis ^d	
	cIR [95%-CI]	p-value	aIR [95%-CI]	p-value
Mean number of complete CATIs per responded alert, 5.1 (SD, 7.8)				
Commune		<0.0001 ^b		
Department ^a		<0.0001 ^b		
NGO responsible for CATI ^a		0.98 ^b		
Commune, department and NGO random effects ^d				<0.0001
Alert level, <i>red</i> vs. <i>orange</i> ^a	1.72 [1.60–1.85]	<0.0001 ^c	1.85 [1.72–1.98]	<0.0001
Semester since mid-2013 ^a	1.21 [1.18–1.23]	<0.0001 ^c	1.22 [1.20–1.25]	<0.0001
Weekly UNICEF disbursements for CATIs, mean (SD; \$10,000 USD)	1.03 [1.02–1.03]	<0.0001 ^c	1.00 [0.99–1.01]	0.84
Weekly accumulated rainfall in the commune, mean (SD; cm)	1.00 [0.99–1.01]	0.92 ^c	ND	ND
Population of the commune, mean (SD; 10,000 inhab.)	1.02 [1.01–1.03]	<0.0001 ^c	1.02 [1.01–1.02]	<0.0001
OCV in the commune before or during the study period, number (%)	1.18 [0.92–1.51]	0.18 ^c	0.99 [0.81–1.20]	0.91
Distance from the capital Port-au-Prince, mean (SD; 10 km)	1.01 [0.98–1.04]	0.4 ^c	ND	ND
Distance from the department capital, mean (SD; 10 km)	0.96 [0.93–1.00]	<0.05 ^c	1.00 [0.97–1.02]	0.77
Mountainous commune, number of alerts (%)	1.05 [0.85–1.29]	0.65 ^c	ND	ND

Comparison of the number of complete CATIs per responded alert was estimated using generalized linear mixed models with a negative-binomial distribution.

^a Number of complete CATIs for each class are summarized in [S3 Table](#) provided as supplementary information.

^b For each of these univariate analyses, communes, departments or NGOs was modeled as unique random effect variables.

^c For these univariate analyses, communes, departments and NGOs were modeled as random effect variables, with communes nested within departments. Models provided a common p-value for both random effects.

^d For all multivariate analysis, the model included communes, departments and NGOs as random effect variables, with communes nested within departments, and all fixed variables for which univariate p-value was <0.25. The model provided a common p-value for random effect variables.

SD, standard deviation; cIR, crude incidence ratio; aIR, adjusted incidence ratio; 95%-CI, 95% confidence interval; ND, no data (variables not included in the multivariate analysis).

<https://doi.org/10.1371/journal.pntd.0007263.t003>

communes and departments, which reflects logistic obstacles to reach cholera outbreaks in remote areas, as confirmed by the significantly lower odds of CATI response during heavy rainfall. Response to alerts was however not significantly hampered by the distance between the affected commune and Port-au-Prince, probably thanks to the decentralized response capacity at the department level. Finally, the odds of response were significantly higher for *red* alerts than *orange* alerts, and significantly more complete CATIs were conducted in response to *red* alerts affecting the more populated communes, thus suggesting that response teams prioritized more severe outbreaks, as requested.

To monitor the response strategy, we chose to use alerts that were retrospectively computed based on consolidated surveillance databases [19]. Cholera alerts proved to be a practical and original indicator, albeit with several limits. Alerts could not be used to accurately assess response promptness because the weekly alert time scale largely exceeded the 48-hour intervention deadline that mobile teams were requested to respect. As the quality of reporting

appeared heterogeneous especially at the beginning of the study period, we could not analyze CATI details, such as the exact quantities of distributed items, nor medical activities carried out by MOH mobile teams and medical NGOs, such as active case finding and chemoprophylaxis. Several other organizations also operated in community cholera prevention during the study period, such as Brigada Médica Cubana, Médecins sans Frontières–Netherlands, Gheskio, Zanmi Lasante, and Canadian Red Cross. However, their cholera field response activities appeared limited in comparison with the 31,306 CATIs included in the present study (field investigation results). Finally, the results may have been biased by the fact that our statistical analyses did not really consider temporal and spatial autocorrelation of alerts and targeted interventions. Both aspects were however partially included in the mixed models, by assessing the covariates semester and remoteness of communes and departments. We therefore believe our analyses were relevant enough to assess the overall dynamics and key determinants of targeted intervention implementation.

Further evaluation is required to assess several additional outputs and outcomes of response interventions, including exact promptness (daily scale); exact geographic targeting; number of persons reached; education session methodology; quantity of distributed items; changes in knowledge, attitude and practice of targeted households concerning handwashing, defecation and water treatment [48,66,67]. Analysis of data from surveys conducted two weeks after the initial response intervention to assess water treatment in targeted households is ongoing. Considering the potential risk of bacterial drug resistance [52], the use of doxycycline chemoprophylaxis should be evaluated in detail. After three years of reactive use and regular monitoring of antibiotic resistance by the MOH, it seems that no resistant *Vibrio cholerae* clinical strains have been isolated in Haiti (unpublished data from the MOH).

This study was not designed to evaluate the effectiveness and impact of the response strategy. Pre-published complementary results suggest that this CATI strategy was significantly effective in mitigating and shortening cholera outbreaks between 2015 and 2017 in Centre Department [68]. Another similar study is underway for the entire country. In addition to the OCV campaigns that have targeted 10% of the population since 2012 [69], the slow progress achieved in water infrastructure provision [70], and the other prevention activities conducted by the MOH, DINEPA and other organizations, this national alert-response strategy may thus have contributed to reduce cholera incidence in 2014 and since 2017 [3].

The present evaluation thus shows that the unprecedented large-scale implementation of CATIs to control cholera is achievable and may cost less than \$1 USD per inhabitant and per year. This strategy however requires continuous efforts to improve response exhaustiveness, intensity and quality. Uniform methodology, centralized coordination, decentralized response capacity, and sustained funding should be key elements of similar strategies. Recent preliminary results concerning CATI effectiveness in Haiti seem promising [68] and will help to optimize future elimination efforts. In Haiti, CATIs still constitute a core element of the 2016–2018 mid-term development of the national plan for cholera elimination [71] and the UN's new approach to cholera in Haiti, which was adopted by the General Assembly in December 2016 [72]. On a global scale, rapid response has also become a key component of the new multi-sectoral approach promoted by the Global Task Force on Cholera Control to reduce cholera deaths by 90% and eliminate the disease in 20 countries by 2030 [73]. Together with the results of ongoing impact studies, these lessons learnt from the field will be very informative for actors and international donors involved in cholera control and elimination, both in Haiti and other countries affected by cholera outbreaks.

Supporting information

S1 Table. Main organizations involved in case-area targeted interventions.

(PDF)

S1 Fig. Organization of cholera surveillance and rapid response in Haiti.

(PDF)

S1 Text. Narrative of the epidemic and response dynamics.

(PDF)

S2 Table. Definitions of cholera alerts used in the study.

(PDF)

S3 Table. Response to alerts, CATI activities in responded alerts, number of complete CATIs for responded alerts. Difference between departments, NGOs, alert levels, and semesters over the course of the study.

(PDF)

S2 Fig. Response to cholera alerts by case-area targeted interventions during the same week, from July 2013 to June 2017: responded and non-responded red and orange alerts (Panel A) and number of complete CATIs per responded alert (Panel B). Difference between alert levels, change over the course of the eight-semester study period, and difference between departments.

(PDF)

S4 Table. List of the databases used in the study.

(PDF)

S1 Database. Databases used in the study.

(XLSX)

Acknowledgments

We are grateful to the people who organized the strategy at the national and departmental levels. We also thank the staff of Ministry of Health, UNICEF, DINEPA and NGOs, who cared for patients, conducted alert investigations, implemented and coordinated field responses, gathered epidemiological and intervention data, analyzed stool cultures, or compiled and prospectively analyzed the cholera and interventions databases.

Author Contributions

Conceptualization: Stanislas Rebaudet, Gregory Bult, Jean Gaudart, Aaron Aruna Abedi, Florence Duperval Guillaume, Edouard Beigbeder, Renaud Piarroux.

Data curation: Stanislas Rebaudet, Gregory Bult, Edwige Michel, Claudia Evers, Samuel Beaulieu, Robert Barraï, Katilla Pierre, Jacques Boncy, Paul Adrien.

Formal analysis: Stanislas Rebaudet, Jean Gaudart.

Funding acquisition: Gregory Bult, Claudia Evers, Samuel Beaulieu, Jacques Boncy, Paul Adrien, Florence Duperval Guillaume, Edouard Beigbeder, Renaud Piarroux.

Investigation: Stanislas Rebaudet, Pierre Gazin, Claudia Evers, Samuel Beaulieu, Aaron Aruna Abedi, Lindsay Osei.

Methodology: Stanislas Rebaudet, Jean Gaudart, Renaud Piarroux.

Project administration: Stanislas Rebaudet, Renaud Piarroux.

Supervision: Renaud Piarroux.

Validation: Jean Gaudart, Samuel Beaulieu, Sandra Moore, Jacques Boncy, Renaud Piarroux.

Visualization: Stanislas Rebaudet.

Writing – original draft: Stanislas Rebaudet, Lindsay Osei, Sandra Moore, Renaud Piarroux.

Writing – review & editing: Stanislas Rebaudet, Gregory Bulit, Jean Gaudart, Edwige Michel, Pierre Gazin, Claudia Evers, Samuel Beaulieu, Aaron Aruna Abedi, Lindsay Osei, Robert Barrais, Katilla Pierre, Sandra Moore, Jacques Boncy, Paul Adrien, Florence Duperval Guillaume, Edouard Beigbeder, Renaud Piarroux.

References

1. Piarroux R, Barrais R, Faucher B, Haus R, Piarroux M, Gaudart J, et al. Understanding the cholera epidemic, Haiti. *Emerg Infect Dis*. 2011; 17: 1161–1168. <https://doi.org/10.3201/eid1707.110059> PMID: 21762567
2. Orata FD, Keim PS, Boucher Y. The 2010 Cholera Outbreak in Haiti: How Science Solved a Controversy. *PLoS Pathog*. 2014; 10: e1003967. <https://doi.org/10.1371/journal.ppat.1003967> PMID: 24699938
3. Republic of Haiti. Ministry of Public Health and Population. Centre de Documentation. Bulletins cholera 2010–2018. <http://mspp.gouv.ht/newsite/documentation.php>. Accessed 1 Sep 2018.
4. Global Task Force on Cholera Control. Cholera outbreak: assessing the outbreak response and improving preparedness. Geneva: World Health Organization (WHO); 2010 Nov p. 87. <http://www.who.int/cholera/publications/OutbreakAssessment/en/>. Accessed 1 Sep 2018
5. Barzilay EJ, Schaad N, Magloire R, Mung KS, Boncy J, Dahourou GA, et al. Cholera Surveillance during the Haiti Epidemic—The First 2 Years. *N Engl J Med*. 2013; 368: 599–609. <https://doi.org/10.1056/NEJMoa1204927> PMID: 23301694
6. Santa-Olalla P, Gayer M, Magloire R, Barrais R, Valenciano M, Aramburu C, et al. Implementation of an Alert and Response System in Haiti during the Early Stage of the Response to the Cholera Epidemic. *Am J Trop Med Hyg*. 2013; 89: 688–697. <https://doi.org/10.4269/ajtmh.13-0267> PMID: 24106196
7. Gelting R, Bliss K, Patrick M, Lockhart G, Handzel T. Water, Sanitation and Hygiene in Haiti: Past, Present, and Future. *Am J Trop Med Hyg*. 2013; 89: 665–670. <https://doi.org/10.4269/ajtmh.13-0217> PMID: 24106193
8. Gartley M, Valeh P, Lange R de, DiCarlo S, Viscusi A, Lenglet A, et al. Uptake of household disinfection kits as an additional measure in response to a cholera outbreak in urban areas of Haiti. *J Water Health*. 2013; 11: 623–628. <https://doi.org/10.2166/wh.2013.050> PMID: 24334836
9. Eisenberg MC, Kujbida G, Tuite AR, Fisman DN, Tien JH. Examining rainfall and cholera dynamics in Haiti using statistical and dynamic modeling approaches. *Epidemics*. 2013; 5: 197–207. <https://doi.org/10.1016/j.epidem.2013.09.004> PMID: 24267876
10. Health Section of the Secretariat of the League of Nations. Cholera, 2013. *Wkly Epidemiol Rec*. 2014; 89: 345–355.
11. Rebaudet S, Gazin P, Barrais R, Moore S, Rossignol E, Barthelemy N, et al. The dry season in Haiti: a window of opportunity to eliminate cholera. *PLoS Curr Outbreaks*. 2013; 5. <https://www.doi.org/10.1371/currents.outbreaks.2193a0ec4401d9526203af12e5024ddc> PMID: 23873011
12. Republic of Haiti, Ministry of Public Health and Population, National Directorate for Water Supply and Sanitation. National Plan for the Elimination of Cholera in Haiti 2013–2022. Port-au-Prince, Haiti; 2013 Feb p. 114. http://www.paho.org/hq/index.php?option=com_docman&task=doc_view&gid=20326&Itemid=270&lang=en. Accessed 1 Sep 2018
13. République d'Haïti, Ministère de la Santé Publique (MSPP). Enquête Mortalité, Morbidité et Utilisation des Services—EMMUS-V—HAÏTI 2012. Pétienville, Haïti: Institut Haïtien de l'Enfance; 2013 Avril p. 536. <http://mspp.gouv.ht/site/downloads/Rapport%20preliminaire%20final%20EMMUS-V.pdf>. Accessed 1 Sep 2018
14. Ivers LC, Teng JE, Lascher J, Raymond M, Weigel J, Victor N, et al. Use of Oral Cholera Vaccine in Haiti: A Rural Demonstration Project. *Am J Trop Med Hyg*. 2013; 89: 617–624. <https://doi.org/10.4269/ajtmh.13-0183> PMID: 24106187

15. Rouzier V, Severe K, Juste MAJ, Peck M, Perodin C, Severe P, et al. Cholera Vaccination in Urban Haiti. *Am J Trop Med Hyg.* 2013; 89: 671–681. <https://doi.org/10.4269/ajtmh.13-0171> PMID: 24106194
16. Ministry of Health Haiti. Vaccination against Cholera in two areas in Haiti, 2013. *WHO Glob Immun Newsl GIN.* 2014; 6.
17. Roy M, Zinck RD, Bouma MJ, Pascual M. Epidemic cholera spreads like wildfire. *Sci Rep.* 2014; 4: srep03710. <https://doi.org/10.1038/srep03710> PMID: 24424273
18. North MP, Stephens SL, Collins BM, Agee JK, Aplet G, Franklin JF, et al. Reform forest fire management. *Science.* 2015; 349: 1280–1281. <https://doi.org/10.1126/science.aab2356> PMID: 26383934
19. Rebaudet S, Bulit G, Gaudart J, Michel E, Gazin P, Evers C, et al. The national alert-response strategy against cholera in Haiti: a four-year assessment of its implementation. *bioRxiv.* 2018. Preprint. <https://doi.org/10.1101/259366>
20. Azurin JC, Alvero M. Field evaluation of environmental sanitation measures against cholera. *Bull World Health Organ.* 1974; 51: 19–26. PMID: 4549038
21. Deb BC, Sircar BK, Sengupta PG, De SP, Mondal SK, Gupta DN, et al. Studies on interventions to prevent eltor cholera transmission in urban slums. *Bull World Health Organ.* 1986; 64: 127–131. PMID: 3488134
22. Taylor DL, Kahawita TM, Cairncross S, Ensink JHJ. The Impact of Water, Sanitation and Hygiene Interventions to Control Cholera: A Systematic Review. *PLoS ONE.* 2015; 10: e0135676. <https://doi.org/10.1371/journal.pone.0135676> PMID: 26284367
23. George CM, Monira S, Sack DA, Rashid M-U, Saif-Ur-Rahman KM, Mahmud T, et al. Randomized Controlled Trial of Hospital-Based Hygiene and Water Treatment Intervention (CHoB17) to Reduce Cholera. *Emerg Infect Dis.* 2016; 22: 233–241. <https://doi.org/10.3201/eid2202.151175> PMID: 26811968
24. Curtis V, Cairncross S. Effect of washing hands with soap on diarrhoea risk in the community: a systematic review. *Lancet Infect Dis.* 2003; 3: 275–281. PMID: 12726975
25. Fewtrell L, Kaufmann RB, Kay D, Enanoria W, Haller L, Colford JM. Water, sanitation, and hygiene interventions to reduce diarrhoea in less developed countries: a systematic review and meta-analysis. *Lancet Infect Dis.* 2005; 5: 42–52. [https://doi.org/10.1016/S1473-3099\(04\)01253-8](https://doi.org/10.1016/S1473-3099(04)01253-8) PMID: 15620560
26. Cairncross S, Hunt C, Boisson S, Bostoen K, Curtis V, Fung IC, et al. Water, sanitation and hygiene for the prevention of diarrhoea. *Int J Epidemiol.* 2010; 39: i193–i205. <https://doi.org/10.1093/ije/dyq035> PMID: 20348121
27. Ramesh A, Blanchet K, Ensink JHJ, Roberts B. Evidence on the Effectiveness of Water, Sanitation, and Hygiene (WASH) Interventions on Health Outcomes in Humanitarian Crises: A Systematic Review. *PLoS ONE.* 2015; 10: e0124688. <https://doi.org/10.1371/journal.pone.0124688> PMID: 26398228
28. Pollitzer R. Cholera studies- 11. Prevention and control. *Bull World Health Organ.* 1957; 17: 67–162. PMID: 13479774
29. Brown V, Jacquier G, Bachy C, Bitar D, Legros D. Prise en charge des épidémies de choléra dans un camp de réfugiés. *Bull Société Pathol Exot.* 1990; 95: 351–354.
30. UNICEF. UNICEF—Cholera Toolkit. New York, NY; 2013. https://www.unicef.org/cholera_toolkit/. Accessed 1 Sep 2018
31. Debes AK, Ali M, Azman AS, Yunus M, Sack DA. Cholera cases cluster in time and space in Matlab, Bangladesh: implications for targeted preventive interventions. *Int J Epidemiol.* 2016; 45: 2134–2139. <https://doi.org/10.1093/ije/dyw267> PMID: 27789673
32. Azman AS, Luquero FJ, Salje H, Mbaïbardoum NN, Adalbert N, Ali M, et al. Micro-Hotspots of Risk in Urban Cholera Epidemics. *J Infect Dis.* 2018; 218: 1164–1168. <https://doi.org/10.1093/infdis/jiy283> PMID: 29757428
33. Finger F, Bertuzzo E, Luquero FJ, Naibei N, Touré B, Allan M, et al. The potential impact of case-area targeted interventions in response to cholera outbreaks: A modeling study. *PLoS Med.* 2018; 15: e1002509. <https://doi.org/10.1371/journal.pmed.1002509> PMID: 29485987
34. Rowe A, Angulo FJ, L R, R T. Chlorinating well water with liquid bleach was not an effective water disinfection strategy in Guinea-Bissau. *Int J Env Health Res.* 1998; 8: 339–340. <https://doi.org/10.1080/09603129873444>
35. Dunston C, McAfee D, Kaiser R, Rakotoarison D, Rabeloson L, Hoang AT, et al. Collaboration, cholera, and cyclones: a project to improve point-of-use water quality in Madagascar. *Am J Public Health.* 2001; 91: 1574–1576. <https://doi.org/10.2105/AJPH.91.10.1574> PMID: 11574309
36. Einarsdóttir J, Passa A, Gunnlaugsson G. Health education and cholera in rural Guinea-bissau. *Int J Infect Dis IJID Off Publ Int Soc Infect Dis.* 2001; 5: 133–138.
37. Piarroux R. [Management of a cholera epidemic by a humanitarian organization]. *Med Trop (Mars).* 2002; 62: 361–367.

38. Guévert E, Van Hecke C, Noeske J, Sollé J, Bitá Fouda A, Manga B. [Handmade devices for continuous delivery of hypochlorite for well disinfection during the cholera outbreak in Douala, Cameroon (2004)]. *Med Trop.* 2008; 68: 507–513.
39. Kakar F, Ahmadzai AH, Habib N, Taqdeer A, Hartman AF. A successful response to an outbreak of cholera in Afghanistan. *Trop Doct.* 2008; 38: 17–20. <https://doi.org/10.1258/td.2006.006336> PMID: 18302855
40. Bartels SA, Greenough PG, Tamar M, VanRooyen MJ. Investigation of a cholera outbreak in Ethiopia's Oromiya Region. *Disaster Med Public Health Prep.* 2010; 4: 312–317. <https://doi.org/10.1001/dmp.2010.44> PMID: 21149233
41. Cavallaro EC, Harris JR, da Goia MS, dos Santos Barrado JC, da Nóbrega AA, de Alvarenga de Junior IC, et al. Evaluation of pot-chlorination of wells during a cholera outbreak, Bissau, Guinea-Bissau, 2008. *J Water Health.* 2011; 9: 394–402. PMID: 21942203
42. Deepthi R, Sandeep SR, Rajini M, Rajeshwari H, Shetty A. Cholera outbreak in a village in south India—Timely action saved lives. *J Infect Public Health.* 2013; 6: 35–40. <https://doi.org/10.1016/j.jiph.2012.05.003> PMID: 23290091
43. Date K, Person B, Nygren B, Were V, Kola S, Ayers T, et al. Evaluation of a Rapid Cholera Response Activity—Nyanza Province, Kenya, 2008. *J Infect Dis.* 2013; 208: S62–S68. <https://doi.org/10.1093/infdis/jit198> PMID: 24101647
44. Bwire G, Mwesawina M, Baluku Y, Kanyanda SSE, Orach CG. Cross-Border Cholera Outbreaks in Sub-Saharan Africa, the Mystery behind the Silent Illness: What Needs to Be Done? *PLoS One.* 2016; 11: e0156674. <https://doi.org/10.1371/journal.pone.0156674> PMID: 27258124
45. Ngwa MC, Liang S, Mbam LM, Mouhaman A, Teboh A, Brekmo K, et al. Cholera public health surveillance in the Republic of Cameroon—opportunities and challenges. *Pan Afr Med J.* 2016; 24: 222. <https://doi.org/10.11604/pamj.2016.24.222.8045> PMID: 27800077
46. Wang A, Hardy C, Rajasingham A, Martinsen A, Templin L, Kamwaga S, et al. Notes from the Field: Chlorination Strategies for Drinking Water During a Cholera Epidemic—Tanzania, 2016. *MMWR Morb Mortal Wkly Rep.* 2016; 65: 1150–1151. <https://doi.org/10.15585/mmwr.mm6541a6> PMID: 27764079
47. Ohene S-A, Klenyue W, Sarpeh M. Assessment of the response to cholera outbreaks in two districts in Ghana. *Infect Dis Poverty.* 2016; 5: 99. <https://doi.org/10.1186/s40249-016-0192-z> PMID: 27802834
48. International Health Partnership (IHP+), World Health Organization (WHO). Monitoring, evaluation and review of national health strategies: a country-led platform for information and accountability. Geneva: World Health Organization (WHO); 2011. <http://apps.who.int/iris/handle/10665/85877>. Accessed 15 Jan 2019
49. Azman AS, Rudolph KE, Cummings DAT, Lessler J. The incubation period of cholera: A systematic review. *J Infect.* 2013; 66: 432–8. <https://doi.org/10.1016/j.jinf.2012.11.013> PMID: 23201968
50. Poncelet JL. Cholera in Haiti: successes and challenges in a low income country. *Wkly Epidemiol Rec.* 2015; 90: 542–544. PMID: 26433984
51. Feachem RG, Bradley DJ, Garelick H, Mara DD. *Vibrio cholerae and cholera. Sanitation and Disease: Health Aspects of Excreta and Wastewater Management.* Chichester: Published for the World Bank by John Wiley & Sons Ltd; 1983. pp. 297–325. <http://documents.worldbank.org/curated/en/1983/01/439534/sanitation-disease-health-aspects-excreta-wastewater-management>. Accessed 1 Sep 2018
52. Reveiz L, Chapman E, Ramon-Pardo P, Koehlmoos TP, Cuervo LG, Aldighieri S, et al. Chemoprophylaxis in Contacts of Patients with Cholera: Systematic Review and Meta-Analysis. *PLoS ONE.* 2011; 6. <https://doi.org/10.1371/journal.pone.0027060> PMID: 22102873
53. Grandesso F. The use of doxycycline to prevent cholera. Twentieth-sixth Scientific Day of Epicentre; 2016 Jun 2; Paris, France.
54. UNICEF Haiti. Michel Ange works towards eliminating cholera in Haiti [Film]. <https://www.youtube.com/watch?v=KOYRX4Fmabo>. Accessed 1 Sep 2018
55. IHSI (Institut Haitien de Statistique et d'Informatique), Direction des Statistiques Démographiques et Sociales, Ministère de l'Economie et des Finances, République d'Haïti. Population totale, population de 18 ans et plus, Ménages et densités estimés en 2015. Port-au-Prince, Haiti; 2015 Mar p. 129. http://ihsi.ht/pdf/projection/Estimat_PopTotal_18ans_Menag2015.pdf. Accessed 1 Sep 2018
56. OpenStreetMap. Available: <https://www.openstreetmap.org/>. Accessed 1 Sep 2018
57. FAO Emergency for Haiti. Haiti—Agro Ecological Zones. Food and Agriculture Organization of the United Nations (FAO); 2010. Available: http://www.fao.org/fileadmin/user_upload/emergencies/docs/haiti-earthquake-map-agro%20ecological%20zones-FAO.pdf. Accessed 1 Sep 2018
58. NASA GES DISC. Giovanni online data system. <https://giovanni.gsfc.nasa.gov/giovanni/>. Accessed 1 Sep 2018

59. Berridge DM, Crouchley R. *Multivariate Generalized Linear Mixed Models Using R*. 1 edition. Boca Raton, FL: CRC Press; 2011.
60. Mickey RM, Greenland S. The impact of confounder selection criteria on effect estimation. *Am J Epidemiol*. 1989; 129: 125–137. <https://doi.org/10.1093/oxfordjournals.aje.a115101> PMID: 2910056
61. Open Source Geospatial Foundation Project. Système d'Information Géographique QGIS. <http://www.qgis.org/fr/site/>. Accessed 1 Sep 2018
62. RStudio. <https://www.rstudio.com/>. Accessed 1 Sep 2018
63. R Foundation for Statistical Computing. R: A Language and Environment for Statistical Computing. <https://www.r-project.org/>. Accessed 1 Sep 2018
64. Wickham H. *ggplot2: Elegant Graphics for Data Analysis*. 2nd ed. 2016 edition. New York, NY: Springer; 2016.
65. Bates D, Mächler M, Bolker B, Walker S. Fitting Linear Mixed-Effects Models Using lme4. *J Stat Softw*. 2015; 67: 1–48. <https://doi.org/10.18637/jss.v067.i01>
66. Beau De Rochars VEM, Tipret J, Patrick M, Jacobson L, Barbour KE, Berendes D, et al. Knowledge, attitudes, and practices related to treatment and prevention of cholera, Haiti, 2010. *Emerg Infect Dis*. 2011; 17: 2158–2161. <https://doi.org/10.3201/eid1711.110818> PMID: 22204033
67. Lantagne D, Bastable A, Mintz E. Innovative WASH interventions to prevent cholera. *Wkly Epidemiol Rec*. 2015; 90: 534–537. PMID: 26433981
68. Michel E, Gaudart J, Beaulieu S, Bulit G, Piarroux M, Boncy J, et al. Effectiveness of Case-Area Targeted Response Interventions Against Cholera: A Quasi-Experimental Study in Haiti. SSRN. 2018. Preprint. <https://papers.ssrn.com/abstract=3304278>. Accessed 3 Feb 2019
69. Ivers LC. Eliminating Cholera Transmission in Haiti. *N Engl J Med*. 2017; 376: 101–103. <https://doi.org/10.1056/NEJMp1614104> PMID: 27959699
70. République d'Haïti, Ministère de la Santé Publique (MSPP), Institut Haïtien de l'Enfance (IHE), The DHS Program. Haïti. Enquête Mortalité, Morbidité et Utilisation des Services (EMMUS-VI). 2016–2017. Pétienville, Haïti: Institut Haïtien de l'Enfance; 2018 Juillet p. 646. https://www.clio-haiti.org/IMG/pdf/haiti_enquete_mortalite_2c_morbidite_et_utilisation_des_services_emmus-vi_2016-2017_5bfr326_5d_1_.pdf. Accessed 3 Feb 2019
71. République d'Haïti, Ministère de la Santé Publique et de la Population, Direction Nationale de l'Eau Potable et de l'Assainissement. Plan national d'élimination du choléra. Développement du moyen terme. Juillet 2016—Décembre 2018. République d'Haïti; 2016. <http://mspp.gouv.ht/newsite/?p=4387>. Accessed 1 Sep 2018
72. United Nations. UN News—General Assembly calls on Member States to support new UN approach to cholera in Haiti. In: UN News Centre. 16 Dec 2016. <http://www.un.org/apps/news/story.asp?NewsID=55817#.WFaNb5lpf0E>. Accessed 1 Sep 2018
73. Global Task Force on Cholera Control. *Ending Cholera. A Global Roadmap to 2030*. Geneva: World Health Organization (WHO); 2017 Oct p. 32. <https://reliefweb.int/sites/reliefweb.int/files/resources/global-roadmap.pdf>. Accessed 1 Sep 2018