



**HAL**  
open science

# INFRARED HEATING: AN ALTERNATIVE TO SOAKING?

Anna Dupleix

► **To cite this version:**

Anna Dupleix. INFRARED HEATING: AN ALTERNATIVE TO SOAKING?. 1ères Journées Scientifiques GDR Sciences du Bois, Nov 2011, Montpellier, France. hal-02100843

**HAL Id: hal-02100843**

**<https://hal.science/hal-02100843>**

Submitted on 16 Apr 2019

**HAL** is a multi-disciplinary open access archive for the deposit and dissemination of scientific research documents, whether they are published or not. The documents may come from teaching and research institutions in France or abroad, or from public or private research centers.

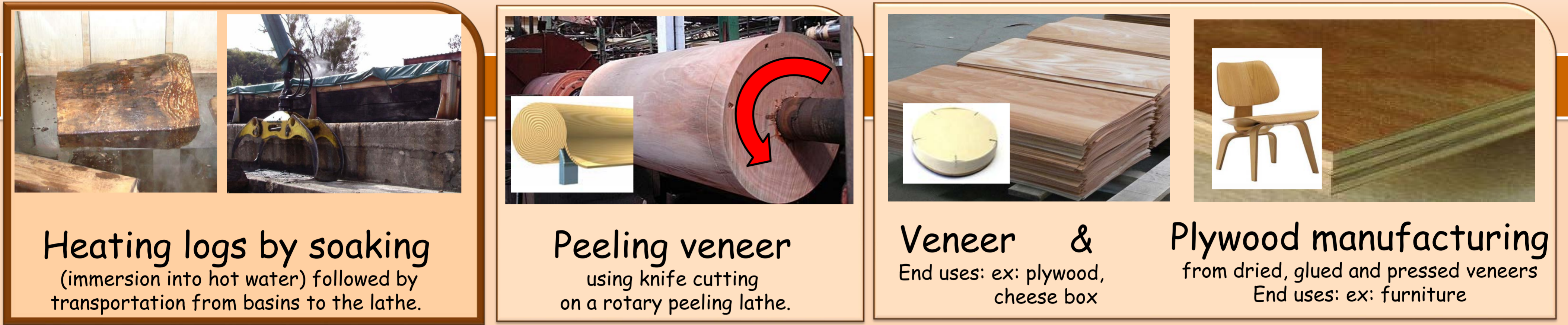
L'archive ouverte pluridisciplinaire **HAL**, est destinée au dépôt et à la diffusion de documents scientifiques de niveau recherche, publiés ou non, émanant des établissements d'enseignement et de recherche français ou étrangers, des laboratoires publics ou privés.

## INFRARED HEATING: AN ALTERNATIVE TO SOAKING?

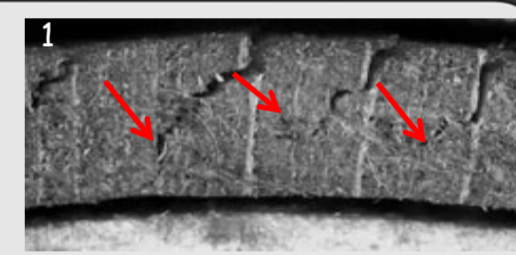
THÈSE EN SCIENCES DU BOIS: LA CHAUFFE INFRAROUGE, UNE ALTERNATIVE À L'ÉTUVAGE ?

### CURRENT VENEER MANUFACTURING PROCESS TO PRODUCE PLYWOOD

MODE DE FABRICATION ACTUEL DE PLACAGES POUR PRODUIRE DU CONTREPLAQUÉ



To soften wood prior to peeling it!  
and increase its deformability under the cutting knife, lowering cutting efforts and improving veneer quality (reduced lathe checks formation).



Lathe checks formed under the action of the cutting knife.



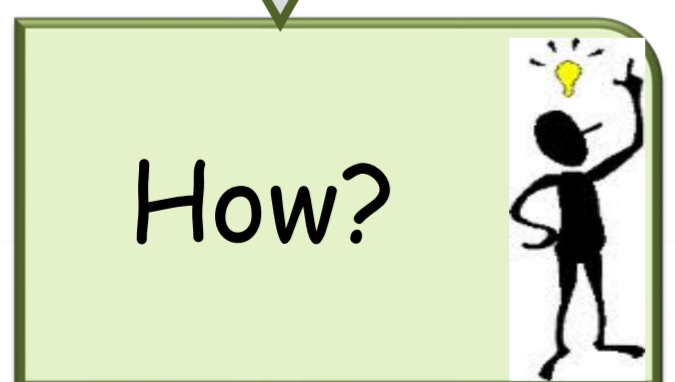
#### Soaking disadvantages

- Time-consuming
- Empirical
- Environmentally costly



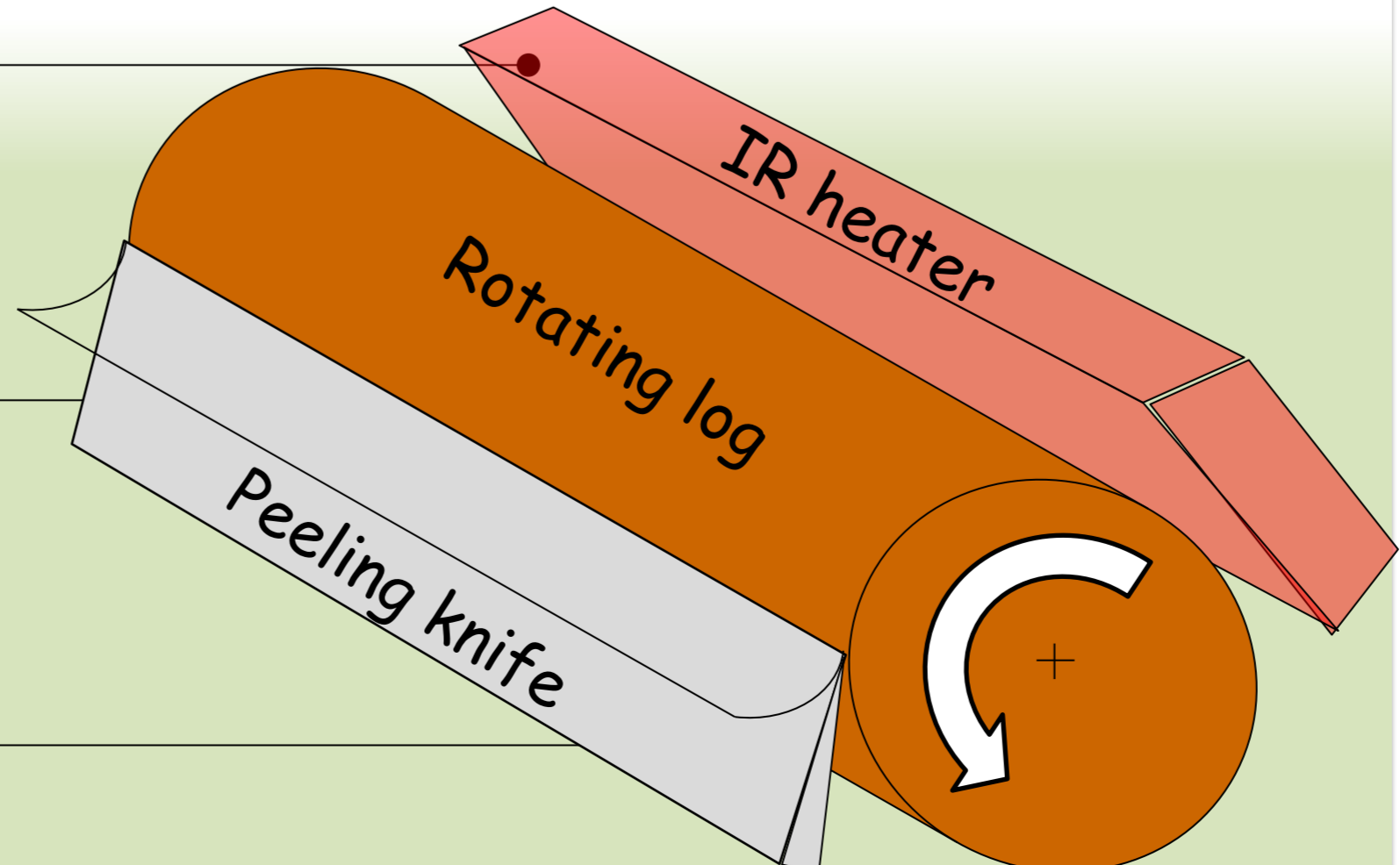
#### Infrared advantages

- Penetrates into green wood
- Fast heating
- Possible in-line implementation
- Flexible energy distribution



**Developing in-line Infrared heating system**  
the goal of this PhD is to build up a prototype of IR heating system on the lathe and compare veneer quality and cutting efforts compared with the soaking method.

Infrared heater  
embedded in the peeling lathe  
heating wood while rotating



Thèse en co-tutelle internationale France-Finlande



by Anna Duplex  
anna.duplex@ensam.eu

1. Palubicki B. et al. (2010), A method of lathe checks measurement: Smof device and its software. European Journal of Wood and Wood Products.  
2. Marchal R. et al. (2004), Technical feasibility of an embedded wood heating device on the slicer or the peeling lathe.