

IR heating of green wood while peeling: a numerical model.

1 / 15

Collaboration:

Louis-Etienne DENAUD¹, Mark HUGHES², Andrezj KUSIAK³, Rémy MARCHAL¹, Sid'Ahmed OULD AHMEDOU¹, Frédéric ROSSI¹.



¹Arts et Métiers ParisTech LaBoMaP, France

²Aalto University, Helsinki, Finland

³Université de Bordeaux, France

Plan:

1. The project idea
2. The model principles
3. The simulation results

Anna DUPLEIX – PhD Candidate

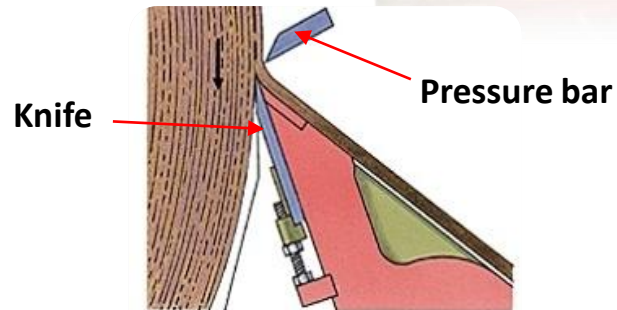
anna.dupleix@ensam.eu

Peeling process: veneer production

Soaking



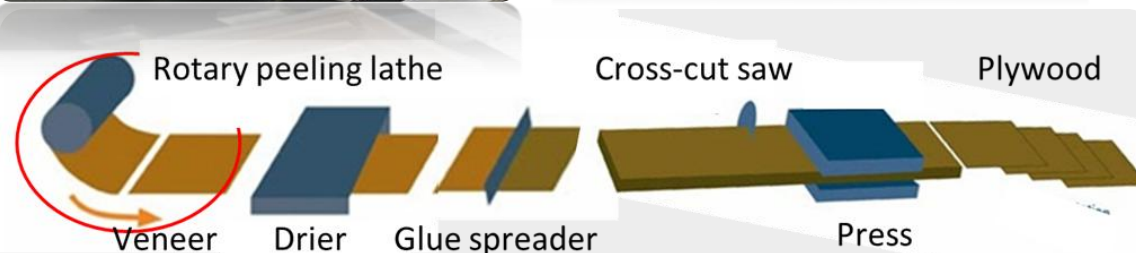
Peeling



Veneer



Plywood



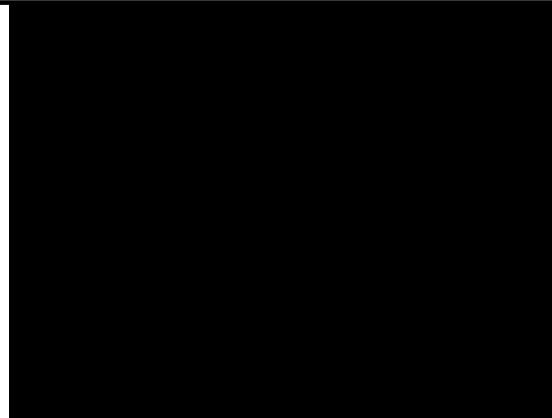
Introduction

Model Principles

Simulation Results

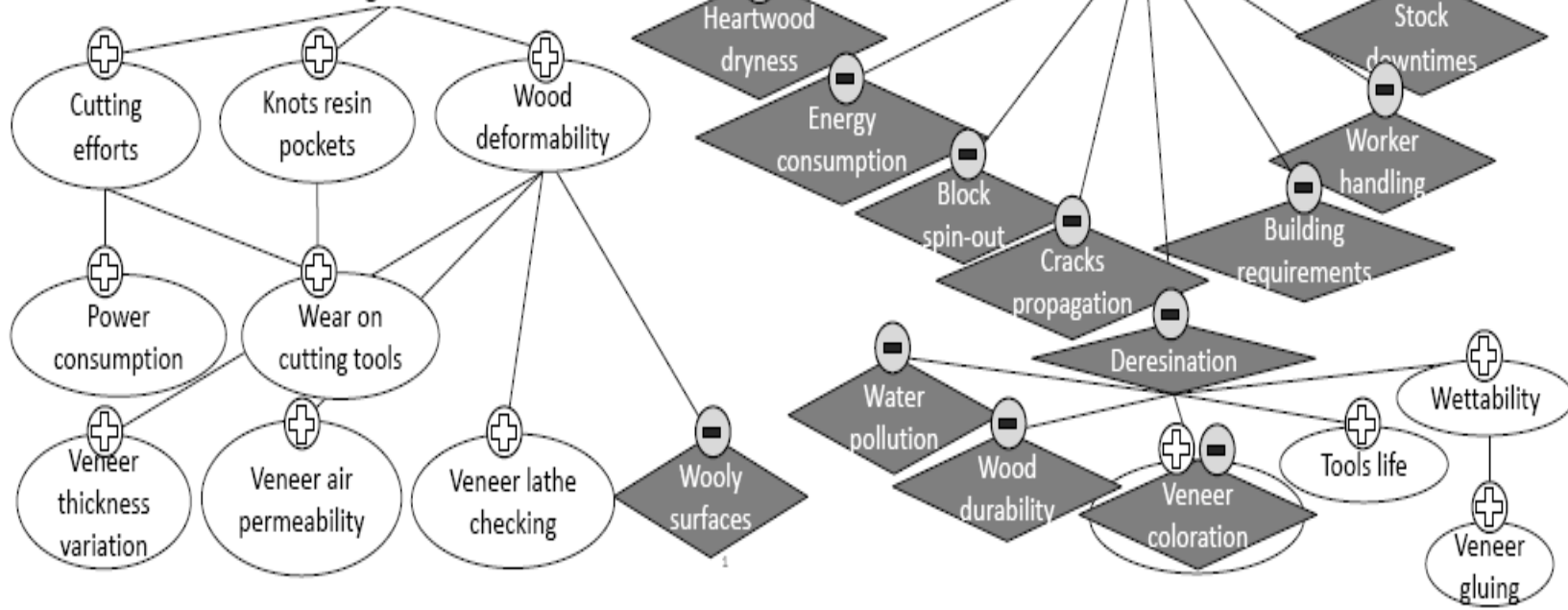
Anna Duplex
COST Workshop
Nancy, March 2012

Why soaking?



Soaking \equiv Heat is transferred into wood with hot water

softens green wood



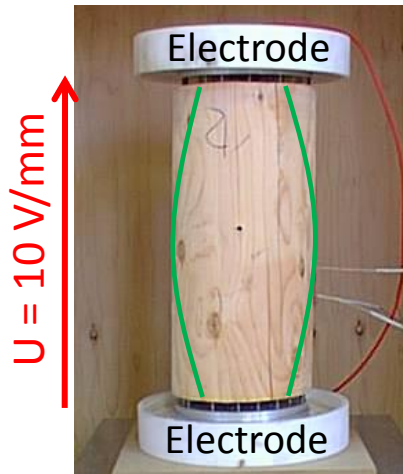
Alternative methods to heating wood prior to peeling avoiding soaking



Volume heating

Electric ohmic heating

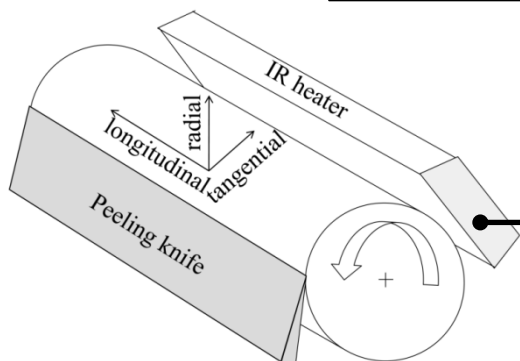
Microwave heating



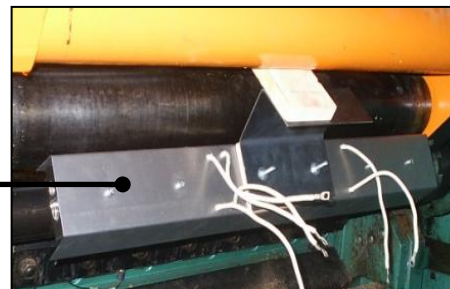
Wood does not need to be cooked for a long duration nor at boiling temperatures
Cell wall has to be brought at the required medium range temperature

Surface heating

Infrared heating (IR)



Infrared heater



Introduction

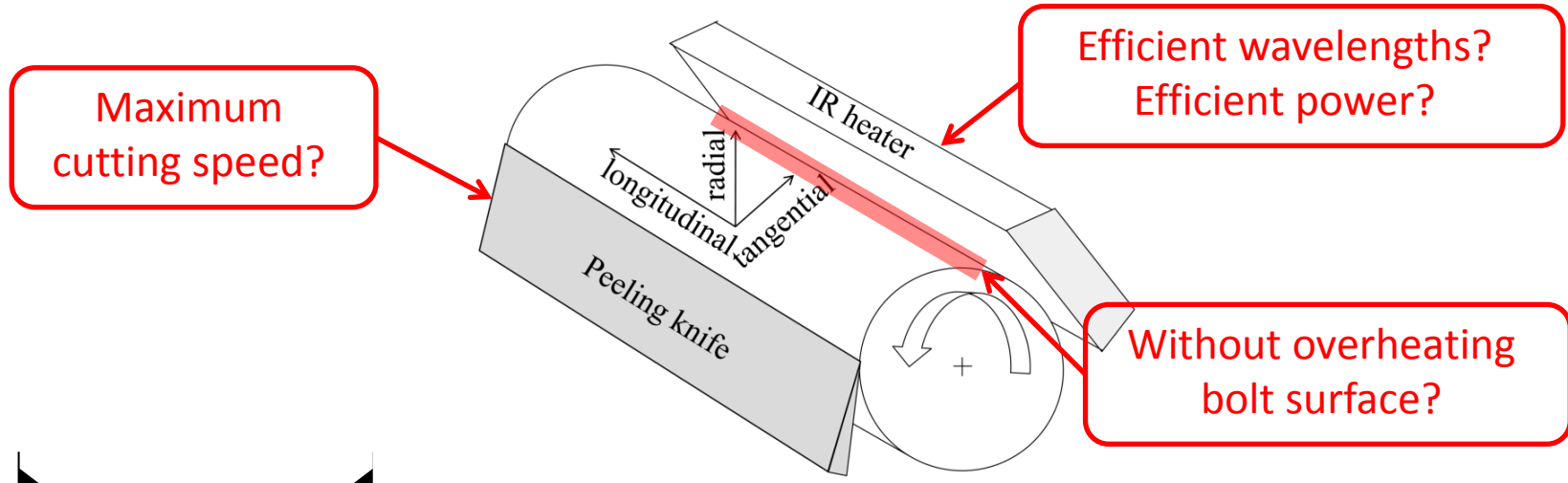
Model Principles

Simulation Results

Anna Dupleix
COST Workshop
Nancy, March 2012

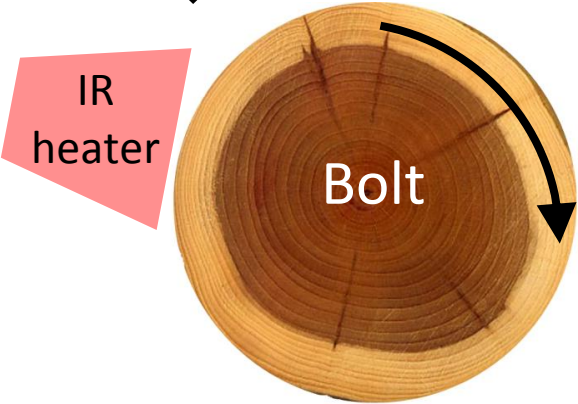


Modelling in-line IR surface heating: principle



The answer here:

By numerical modelling of IR heating while peeling



Equations solver Comsol Multiphysics®
Procedure implemented under MatLab®

- Introduction
- Model Principles
- Simulation Results

Anna Dupleix
COST Workshop
Nancy, March 2012



Methodology: meshing and sensitivity analysis



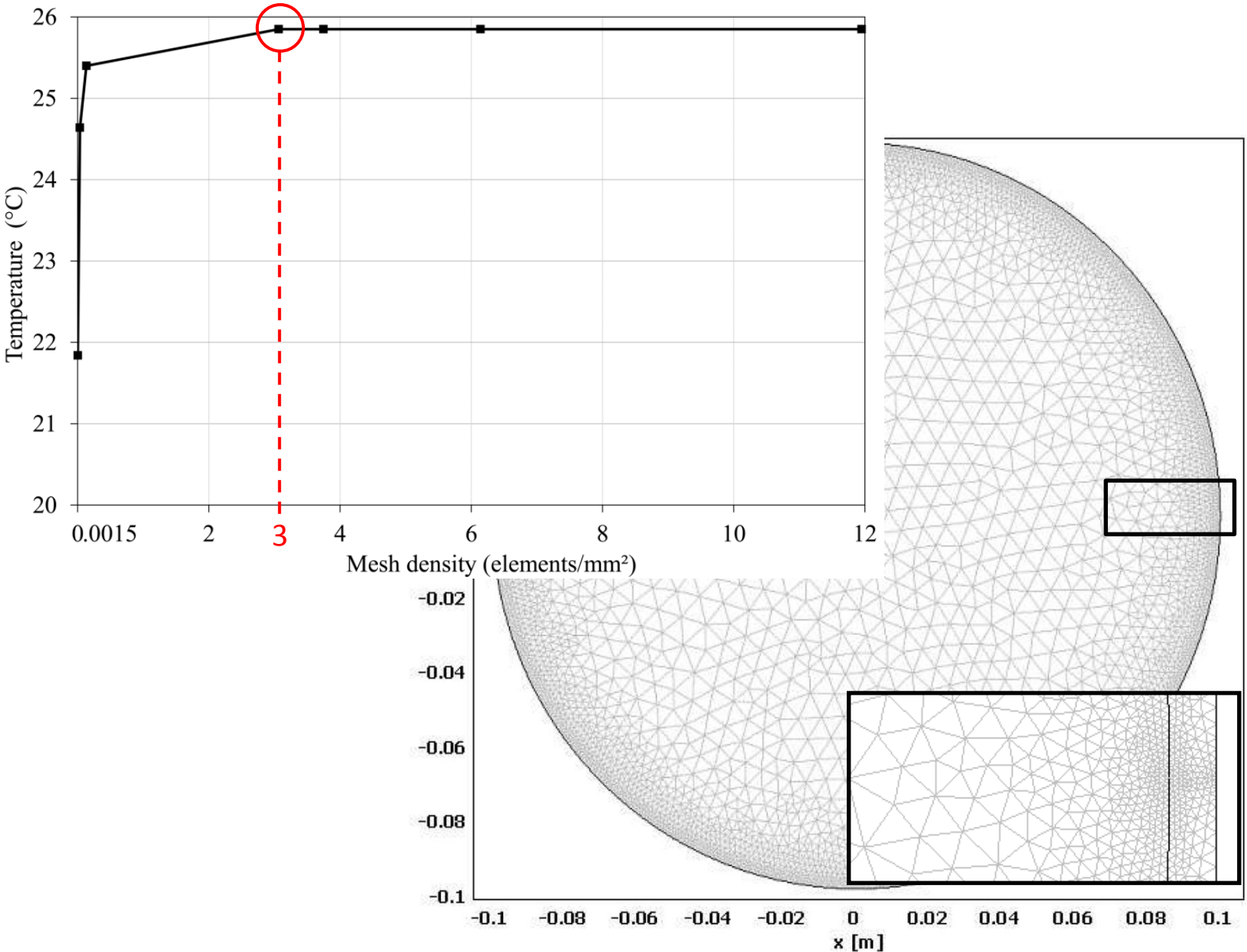
6 / 15

Introduction

Model Principles

Simulation Results

Anna Dupleix
COST Workshop
Nancy, March 2012



Heat transfer equations



$$(1) \quad \rho C_p \frac{\partial T}{\partial t} = \nabla \cdot (k \nabla T)$$

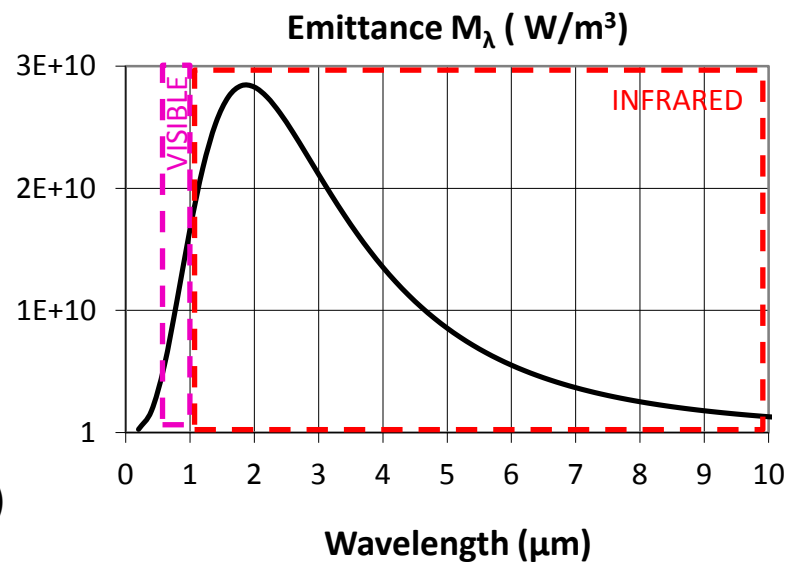
$$(2) \quad Q_{rad} = h(T_{ext} - T) + \epsilon \sigma (T_{ext}^4 - T^4)$$

- ρ wood density (kg.m⁻³)
- C_p heat capacity of the wood (J.kg⁻¹.K⁻¹)
- T bolt temperature (K)
- k conductivity of wood (W.m⁻¹.K⁻¹)
- Q_{rad} external IR heat source
- h heat transfer coefficient (W.m⁻².K⁻¹)
- T_{ext} external IR source temperature (K)

- Introduction
- Model Principles
- Simulation Results

$$M_\lambda = \frac{2\pi \cdot c^2 \cdot \lambda^5}{e^{\frac{h \cdot c}{\lambda \cdot k \cdot T}} - 1}$$

Planck's law



- ϵ wood emissivity (no dimension)
- σ Stefan-Boltzmann constant (W.m⁻².K⁻⁴)

Anna Duplex
 COST Workshop
 Nancy, March 2012



Subdomain settings



Introduction

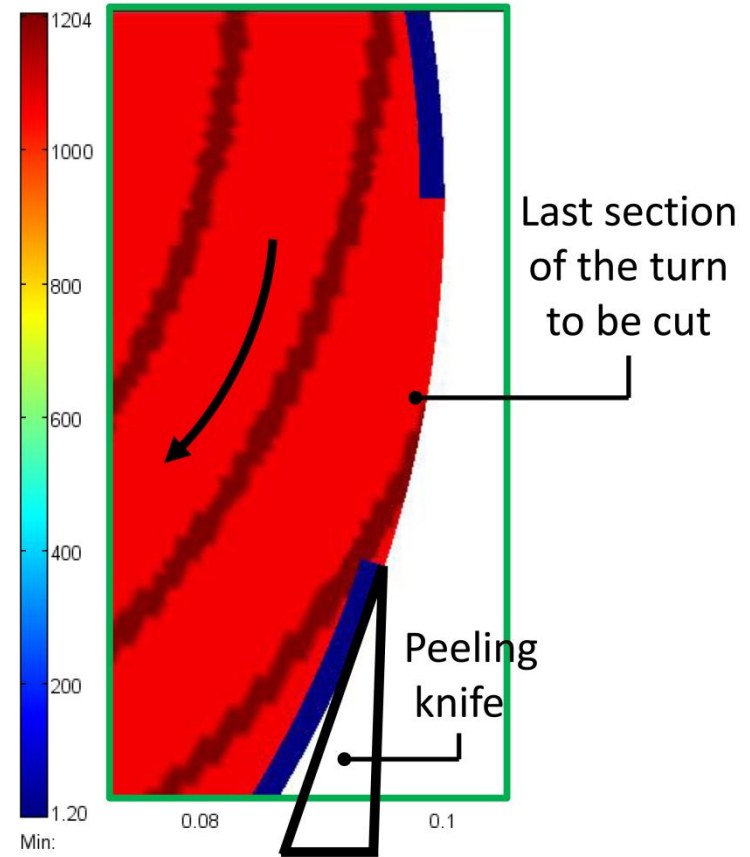
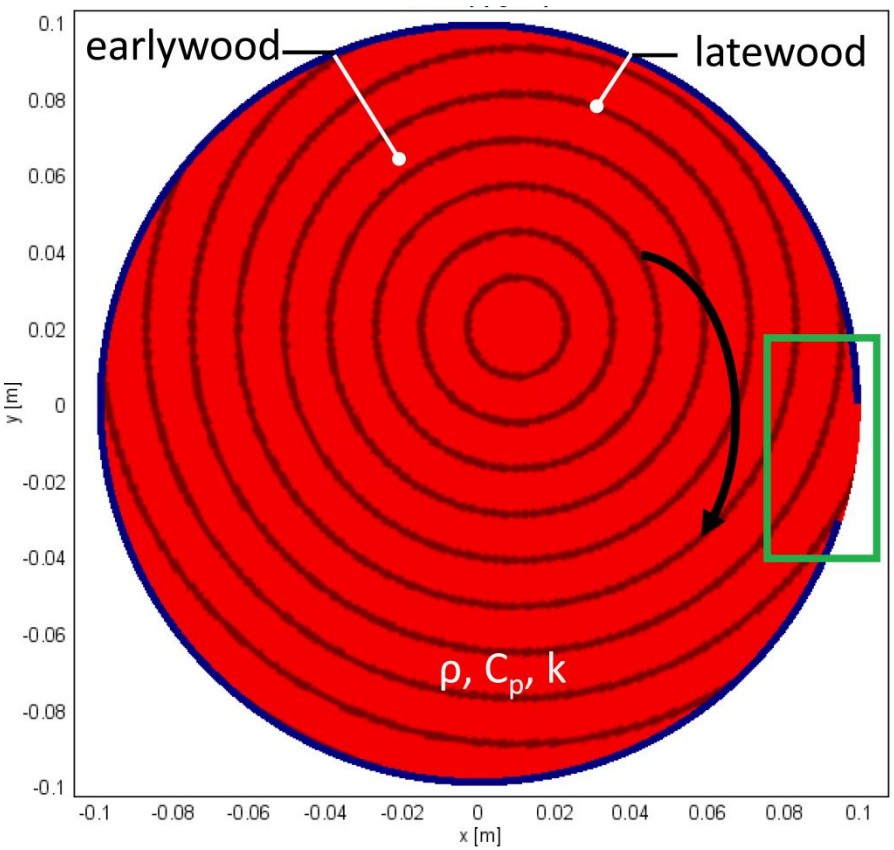
Model Principles

Simulation Results

Anna Dupleix
COST Workshop
Nancy, March 2012



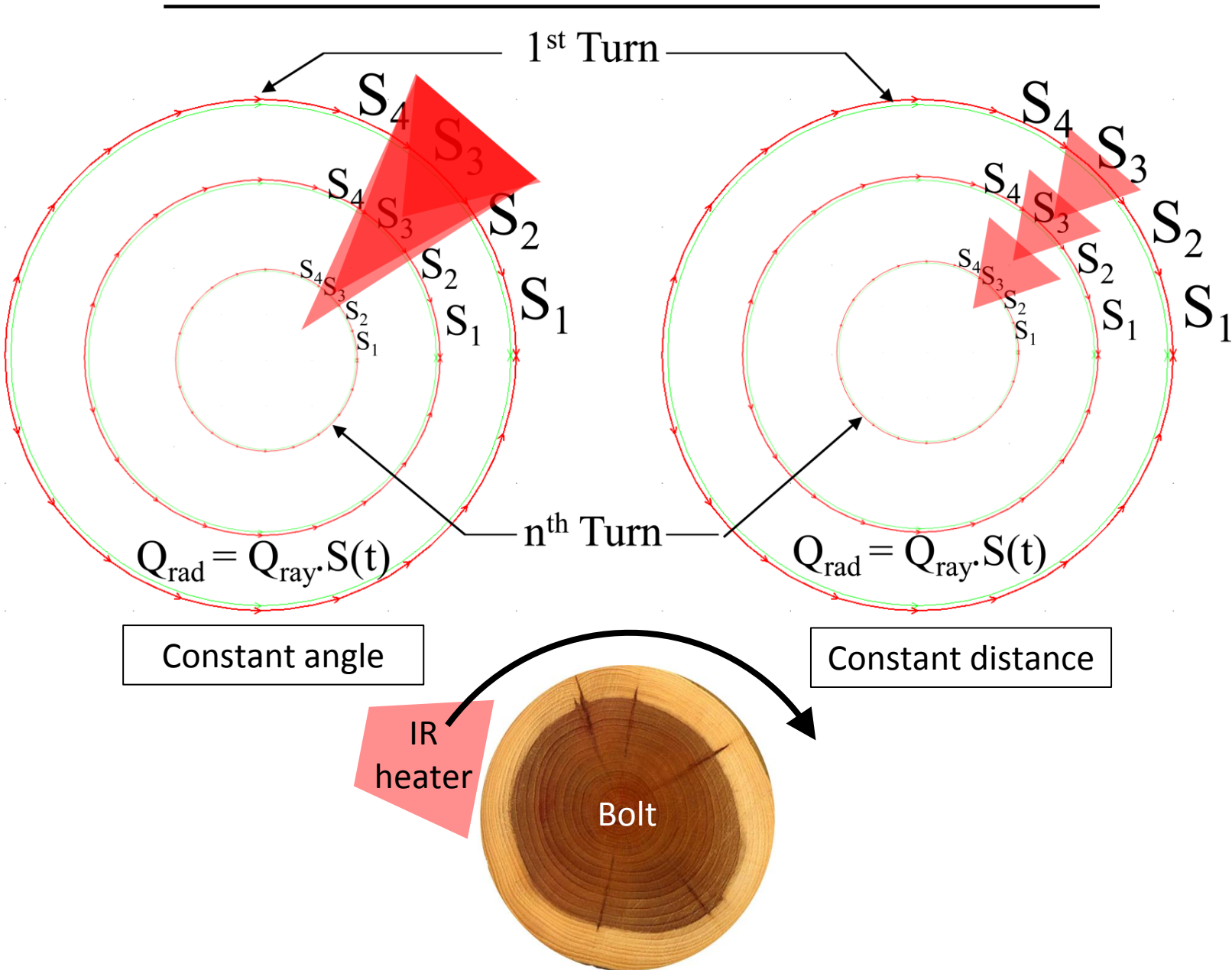
kg.m⁻³



Each Finite Element is parametered with wood physical properties, taking into account natural defects (knots, rays, off-centered pith)

Continuous peeling with a circle trajectory

Boundary conditions



Temporal evolution of temperature within the bolt during one turn



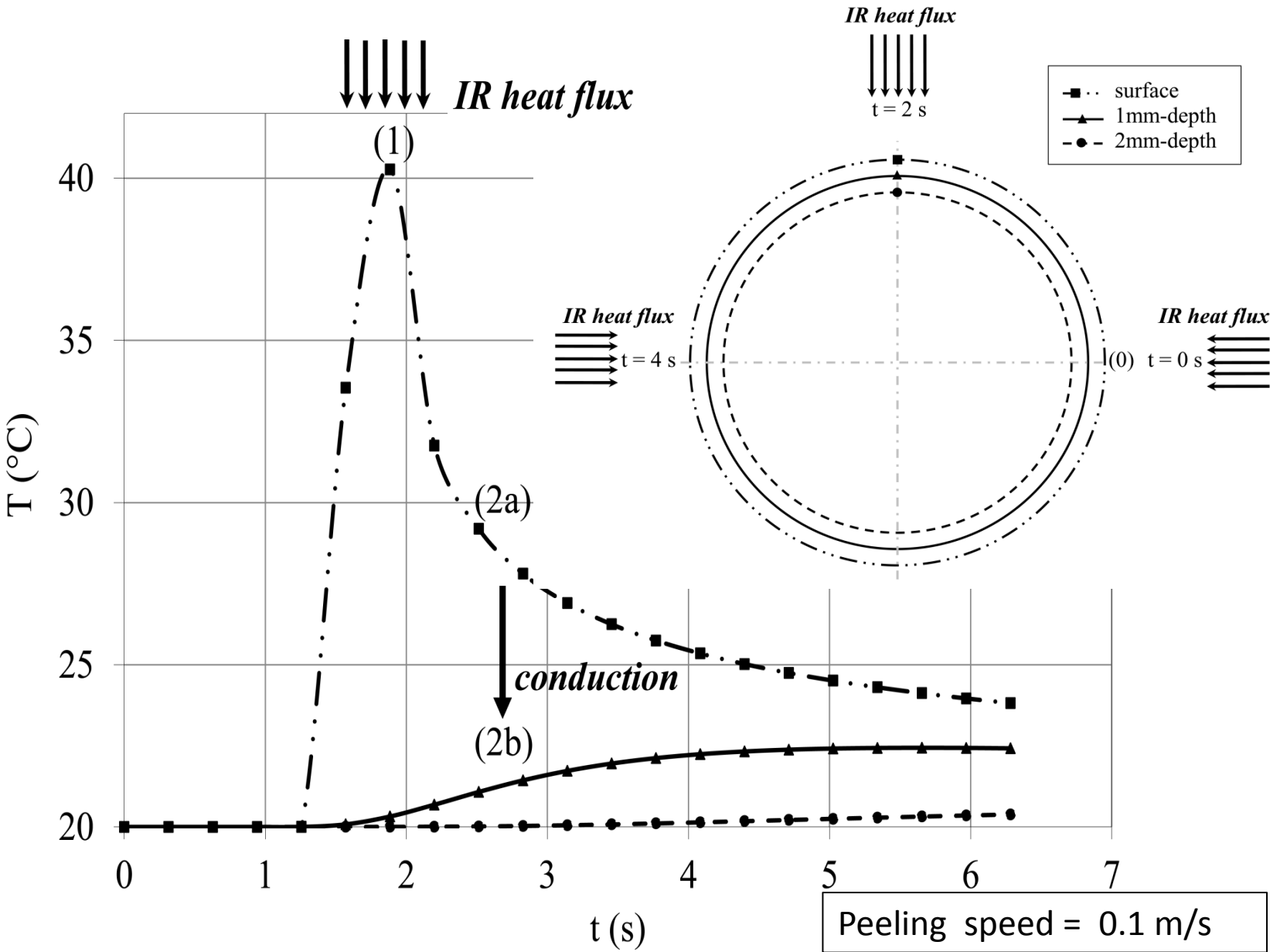
10 / 15

Introduction

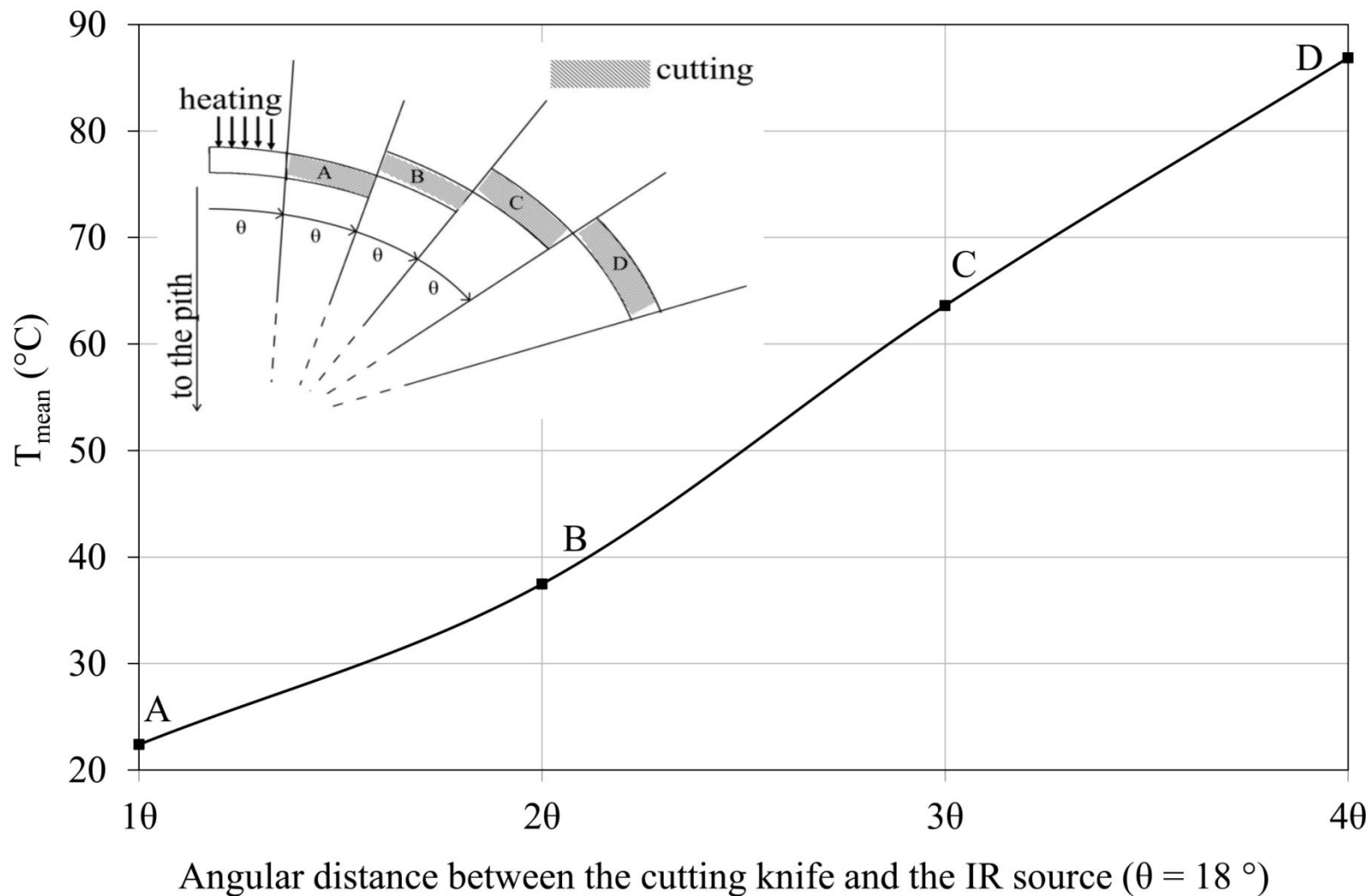
Model Principles

Simulation Results

Anna Duplex
 COST Workshop
 Nancy, March 2012



Influence of the distance between the knife and the IR source



IR source temperature $T_{\text{ext}} = 2500^\circ\text{C}$
peeling speed $v = 0.3 \text{ m/s}$



11 / 15

Introduction

Model Principles

Simulation Results

Anna Duplex
COST Workshop
Nancy, March 2012



Influence of peeling speeds and peeling thickness



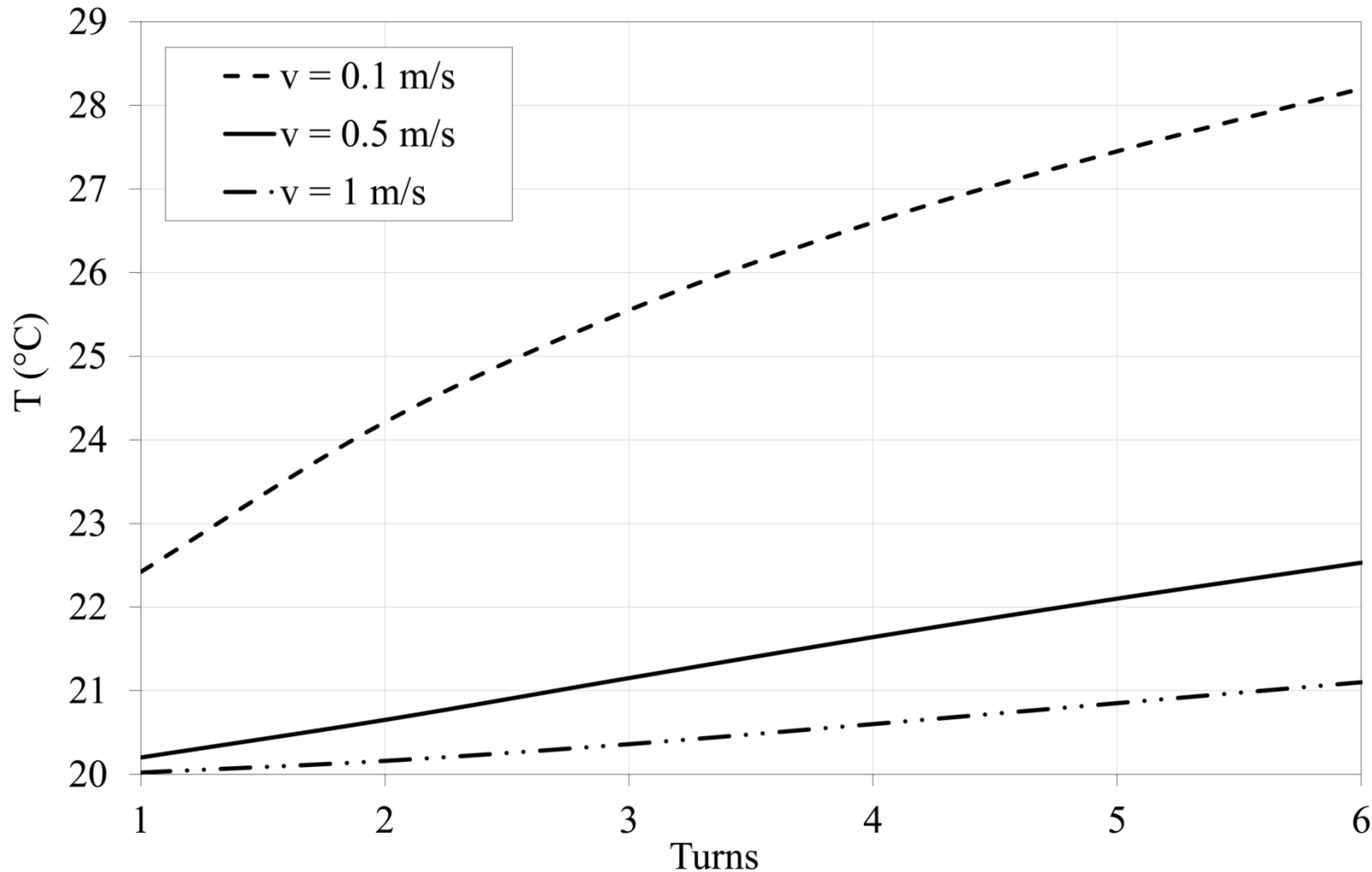
12 / 15

Introduction

Model Principles

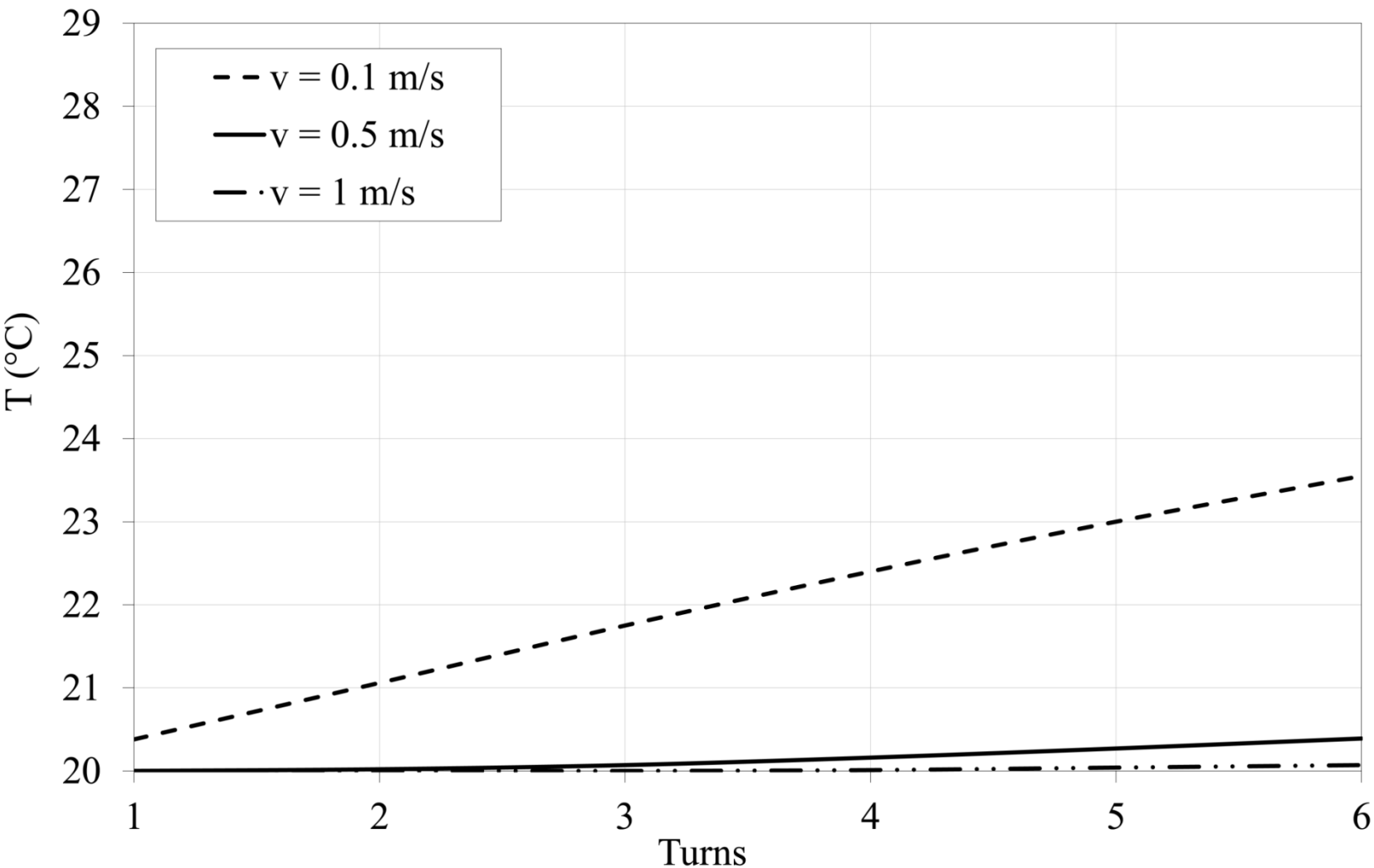
Simulation Results

Anna Duplex
COST Workshop
Nancy, March 2012



IR source temperature $T_{\text{ext}} = 500^\circ\text{C}$
Peeling thickness $e = 1 \text{ mm}$

Influence of peeling speeds and peeling thickness



IR source temperature $T_{\text{ext}} = 500^{\circ}\text{C}$
Peeling thickness $e = 2$ mm



13 / 15

Introduction

Model
Principles

Simulation
Results

Anna Dupleix
COST Workshop
Nancy, March 2012

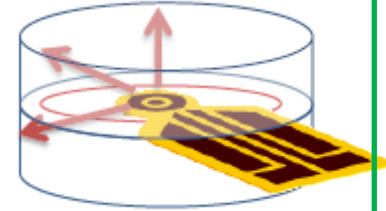


FUTURE WORK

14 / 15

To integrate in the model:

- green wood thermal properties : C_p , $k = f(MC)$
 - > with transient HotDisk® method (TREFLE, Bordeaux)
 - > should speed up heat penetration
- green wood optical properties : emissivity, transmittivity, absorptivity = $f(\lambda)$
 - > modifying model's equations with IR volumic Beer- Lamberts absorption law (CNRS, Orléans)



$$(1) \quad \rho C_p \frac{\partial T}{\partial t} = \nabla \cdot (k \nabla T) + \beta I_0 e^{-\beta r} \quad \text{with} \quad I_0 = \sigma T_{\text{ext}}^4 \quad \text{and} \quad \beta = \frac{4\pi\kappa}{\lambda}$$

$$(2) \quad Q_{\text{rad}} = h(T_{\text{ext}} - T) - \varepsilon\sigma T^4$$

> should deepen radiation penetration

To experimentally validate the model

- to establish it as an essential decision-making tool to design in-line IR heating system directly embedded on the cutting machine

CONCLUSIONS SO FAR ON THE OPTIMUM CONFIGURATION

To locate IR source as far as possible from the knife

IR heating of green wood while peeling: a numerical model.

15 / 15

Thank you for your attention

- Baldwin, R.F., (1975) Plywood Manufacturing Practices. Miller Freeman Publications Inc., San Fransisco, California, pp 62-78.
- Bardet, S., Beauchêne, J., Thibaut, B.,(2003) Influence of basic density and temperature on mechanical properties perpendicular to grain of ten wood tropical species. *Annals of Forest Science*. 60(1):49-59. Bedard, N., Laganier, B., (2009) Debarking Enhancement of Frozen Logs. Part II: Infrared System for Heating Logs Prior to Debarking. *Forest Products Journal*. 59(6):25-30.
- Coste, N., (2005) Interest of radiant energy for wood peeling and slicing process. Master's thesis, University of Melbourne.
- Dupleix, A., Marchal, R., Bléron, L., Rossi, F., Hughes; M., (2011) On-line heating temperatures of green-wood prior to peeling. Joint International Symposium on Wood Composites and Veneer Processing and Products Proceedings.
- Flir Systems (2004) ThermaCAM User's Manual.
- Gaudilliere, C., (2003) Contribution au développement d'une chauffe électrique rapide de bois vert de Douglas en vue de son déroulage. Master's thesis, Arts et Métiers ParisTech.
- Glass, S.V., Zelinka, S.L., (2010) Wood handbook, Chapter 04: Moisture relations and physical properties of wood. General Technical Report FPL-GTR-190 Department of Agriculture, Forest Service, Forest Products Laboratory, Madison, WI, US. 4-1 - 4-19.
- Lutz, J.F., (1960) Heating veneer bolts to improve quality of douglas-fir plywood. Technical report USDA Forest Service General FPL-2182, Forest Products Laboratory, Madison, WI, US.
- Marchal, R., Collet, R., (2000) Contribution au développement d'une chauffe électrique rapide de bois vert de douglas en vue de son déroulage. Technical report, Arts et Métiers ParisTech.
- Marchal, R., Gaudilliere, C., Collet, R., (2004) Technical feasibility of an embedded wood heating device on the slicer or the peeling lathe. International Symposium Veneer Processing and Products Proceedings. pp 29-44.
- Matsunaga, M., Minato, K., (1998) Physical and mechanical properties required for violin bow materials II: Comparison of the processing properties and durability between pernambuco and substitutable wood species. *Journal of Wood Science*. 44(2):142-146.
- Potter, B.E., Andresen, J.A., (2010) A finite-difference model of temperatures and heat flow within a tree stem. *Revue Canadienne de Recherche Forestière*. 32(3):548-555.
- Torgovnikov, G., Vinden, P., (2010) Microwave wood modification technology and its applications. *Forest Products Journal*. 60(2):173.
- Yamauchi, S., Iijima, Y., Doi, S., (2005) Spectrochemical characterization by FT-Raman spectroscopy of wood heat-treated at low temperatures: Japanese larch and beech. *Journal of Wood Science*. 51(5):498-506.

Anna DUPLEIX – PhD Candidate
anna.dupleix@ensam.eu