



HAL
open science

Artificial Gene Regulatory Networks - A Review

Sylvain Cussat-Blanc, Kyle Harrington, Wolfgang Banzhaf

► **To cite this version:**

Sylvain Cussat-Blanc, Kyle Harrington, Wolfgang Banzhaf. Artificial Gene Regulatory Networks - A Review. *Artificial Life*, 2019, 24 (4), pp.296-328. 10.1162/artl_a_00267 . hal-02092957

HAL Id: hal-02092957

<https://hal.science/hal-02092957>

Submitted on 8 Apr 2019

HAL is a multi-disciplinary open access archive for the deposit and dissemination of scientific research documents, whether they are published or not. The documents may come from teaching and research institutions in France or abroad, or from public or private research centers.

L'archive ouverte pluridisciplinaire **HAL**, est destinée au dépôt et à la diffusion de documents scientifiques de niveau recherche, publiés ou non, émanant des établissements d'enseignement et de recherche français ou étrangers, des laboratoires publics ou privés.



Open Archive Toulouse Archive Ouverte

OATAO is an open access repository that collects the work of Toulouse researchers and makes it freely available over the web where possible

This is an author's version published in:
<http://oatao.univ-toulouse.fr/22729>

Official URL

DOI : https://doi.org/10.1162/artl_a_00267

To cite this version: Cussat-Blanc, Sylvain and Harrington, Kyle and Banzhaf, Wolfgang *Artificial Gene Regulatory Networks - A Review*. (2019) *Artificial Life*, 24 (4). 296-328. ISSN 1064-5462

Any correspondence concerning this service should be sent to the repository administrator: tech-oatao@listes-diff.inp-toulouse.fr

Artificial Gene Regulatory Networks - A Review

Sylvain Cussat-Blanc
University of Toulouse
21 Alle de Brienne
31042 Toulouse, France
`sylvain.cussat-blanc@ut-capitole.fr`
Phone: +33 5 61 12 86 41

Kyle Harrington
Computational and Physical Systems group
Virtual Technology and Design
University of Idaho
Moscow, ID, 83844, USA
`kharrington@uidaho.edu`
Phone: +1 208 907 1717

Wolfgang Banzhaf
BEACON Center for the Study of Evolution in Action and
Department of Computer Science and Engineering
Michigan State University
East Lansing, MI, 48824, USA
`banzhafw@msu.edu`
Phone: +1 517 353 6963

Abstract

In Nature, gene regulatory networks are a key mediator between the information stored in the DNA of living organisms (their genotype) and the structural and behavioral expression this finds in their bodies, surviving in the world (their phenotype). They integrate environmental signals, steer development, buffer stochasticity and allow evolution to proceed. In Engineering, modeling and implementations of artificial gene regulatory

networks has been an expanding field of research and development over the past few decades. This review discusses the concept of gene regulation, the current state-of-the-art in gene regulatory networks, including modeling and simulation, and reviews their use in artificial evolutionary settings. Here, we provide evidence for the benefits of this concept in natural and the engineering domains.

Keywords: Gene regulatory networks Evolutionary algorithms Morphogenesis Control Dynamics Neuromodulation

1 Introduction

Ever since the seminal paper by King & Wilson [88], the biological community has been aware that there is more to the genome than nucleic acid sequences translated into amino acid sequences. While the apparatus for transcription and translation of DNA information into protein function has been studied since the 1950s, leading to the “Central Dogma” of Molecular Biology [26, 27], already Schroedinger in his famous work on life [128] alluded to the possibility of an executing role, i.e. more than an information template role for his “aperiodic crystal” at the foundation of life. With the development of the operon model, Jacob and Monod [71] had already firmly established the idea of regulation in our understanding of the life-organizing functions of DNA.

The central challenge that gene regulatory networks address is the “translation” between spatial patterns of information, as provided by different types of macromolecules such as oligo- and poly-mers, or the configuration of matter *in space*, and the dynamical processes *in time* necessarily underlying any type of behavior. With regulation, the study of *objects* in Biology is enlarged by the study of *processes*. Spatial arrangements of objects (the material of life) are replaced by temporal arrangements of processes as the core principles of living systems. While space remains an important aspect of life (natural life without spatial embodiment is unthinkable), it is the dynamic aspects of entities that play the dominant role. With regulation, the notion of time, dynamics, transients and steady states becomes of utmost importance in our understanding of organisms.

The simplest self-contained genetic regulatory element (or motif) is a feedback loop. A completely new phenomenon (oscillations in time) can emerge in such an otherwise dull behavioral landscape. Since as soon as there is a mix of positive and negative feedback connections in the loop, the tiniest amount of

noise can cause oscillations to emerge, bringing about a “new behavior” of this system with an intrinsic time-scale. Thus, it is to be expected that larger gene regulatory networks, consisting of many genes, contain a variety of network motifs with both positive and negative feedback connections [111]. Between these motifs, weaker connections can accumulate causes and distribute effects.

Additionally, we can immediately see that many different behaviors should be expected to “emerge” from such networks. While the details of these behaviors are the result of possibly delicate network interactions and therefore difficult to predict, the fact that networks allow a richness of behaviors to emerge is important for adaptivity of living organisms. For example, the growth of the body of an organism and the behavior of its parts in different phases of its development does not obey strict rules directly able to generate these elements. Rather, we have to assume a set of processes that obey their own internal logic of regulation and develop in phases, influenced by the environment and controlled by different subsets of the genetic regulatory network. In multi-cellular organisms, there are many precursor cell phases until a final cell state is reached, and development can be seen as a process of gradual approach to the state of maturity of a body, rather than its immediate “instantiation”.

We can finally see that noise and stochastic events are likely playing a key role in promoting variety [122]. First off, regulation is sensitive to single molecule activities, bringing about the possibility of stochastic quantum effects influencing the outcome. However, the Brownian motion underlying diffusion that we are used to average out from underlying cause-effect relationships brings another type of stochasticity into these systems, providing additional time scales which correspond to the spatial organization of the organisms and their environment.

This paper is aimed at providing a brief overview of the phenomena and models of gene regulatory networks and delving into the applicability of these

concepts in man-made artifacts. Thus Section 2 discusses some of the most important phenomena in biological gene regulatory systems, Section 3 provides an overview of the modeling efforts that have been made over the years to describe and understand these phenomena. Section 4 is then dedicated to a discussion of the internal dynamics of artificial regulatory network models, and Section 5 reviews the current applications of these approaches. The paper concludes with a discussion of the future of artificial gene regulatory network research in Section 6.

2 Gene Regulation in Nature

Regulation in general refers to the control of the flow of certain quantities by signals from another entity. If we consider the multitude of flows that have to be arranged for a living organism to “properly function”, it becomes clear that the first target of gene regulation has to be the control of metabolic fluxes. From the intake of nutrients to the expulsion of waste, the energy household of cells needs to be organized and controlled. Enzymes and their expression levels are the material patterns that have to be arranged in time to make this possible.

However, this is just the most basic regulatory need of organisms. The sophisticated weaving together of behaviors to produce the life cycle of a cell or organism, or that allow it to survive under adverse circumstances stand to gain as much from regulation as energy fluxes do [57].

All of this leads to the conclusion that the control of gene expression levels that in turn control the interaction of the organism with its environment, is the most basic function one can imagine for a gene. But in addition, gene products can interact with other genes and their products, thus forming a network that allows intrinsic time-scales and autonomy (self-regulation) to emerge [33]. The following subsections discuss these topics more in details.

2.1 Gene Expression, Cell Function and Differentiation

The behavior and type of a cell are characterized by the gene expression patterns of the cell. This is because the gene expression patterns describe the components of the cell that have been constructed. By construction we mean the transcription of DNA into RNA, and its possible subsequent translation into protein. RNA expression levels therefore can be used to identify specific cell types. One speaks of the “fingerprint” of a cell, revealed in its expression pattern [2, 54] through RNA sequencing techniques.

However, as always in Biology, individual cells vary a lot. Therefore, while the characterization of cell *types* is a convenient way of clustering cell behaviors into classes, there is nevertheless substantial variation between different cells even in the same cell class (or type). Historically, this was difficult to examine in the laboratory, since most techniques could only be used to analyze cell mixtures. With the advent of single cell transcriptomics, however, the situation has changed and differences down to the individual cell level can be resolved [46, 136].

It is also becoming clear that not only do individual cells of the same type have differences in their expression profile, but cells vary their expression levels depending on circumstances and age [87]. No wonder, cells are open systems, best characterized at any time as in steady state or in transition. This confirms the intuitive ideas first proposed by Waddington in 1957 [144], as depicted in Figure 1.

2.2 Genomic and Protein Aspects

Gene expression happens through a process of gene activation and subsequent generation of protein and/or RNA products. The activation and control of gene expression is the focus of genetic regulation, where multiple mechanisms influ-

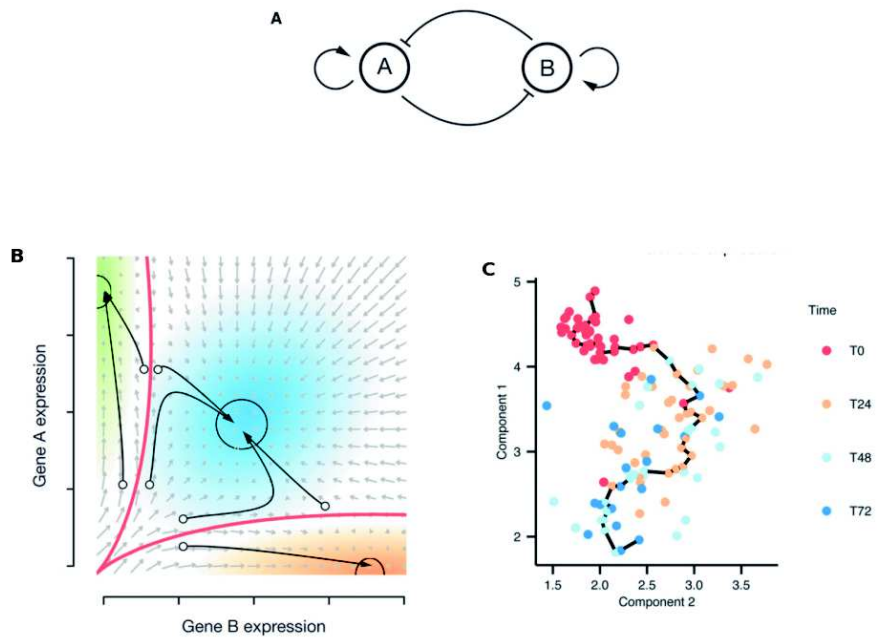


Figure 1: The trajectory of a cell, after [136]. A: Idealized regulatory network with two genes inhibiting each other. B: Three resulting distinct stable states (attractors) with their attractor basins indicated by arrows. C: Gene expression levels of the components over time can be considered as trajectories through expression space. Time quantified in arbitrary units and indicated in colors.

ence the rate of gene expression. While the machinery of gene expression is complex and varies across organisms, some features are consistent. Gene expression requires the recruitment of a RNA polymerase to a gene's region of the DNA sequence which will then transcribe the gene into mRNA by forming RNA polymers from nucleotides. Promoter sequences are used to initiate transcription of a gene by recruiting the polymerase. Transcription factors modulate the rate of expression by inhibiting or enhancing the rate of transcription of genes. Transcription factors are themselves the products of gene expression, serving as a source of feedback for the regulation of genetic networks. While the transcription of genes yields mRNA, in the case of protein products, an additional step of translation must be performed to produce a protein product from a given mRNA molecule. However, mRNA itself can spawn other types of RNA (iRNA, etc) which take on their own regulatory or interaction role in the processes leading to protein production.

As mentioned above, the products of gene expression are protein and RNA molecules, some of which are transcription factors while others directly contribute to the metabolism and behavior of cells. The behavior and function of a cell is the result of the gene expression that has contributed to the current state of the cell. That is to say, the size, membrane composition, and structure of a cell are defined by, among other things, the gene products that reside within the cell. As a consequence the state and function of a cell is defined by the composition of the cell, which is the integral of gene expression, degradation, etc. Readers interested by these mechanisms can find an extended review in [67].

2.3 Significance of GRNs in Cellular Physiology

The cell cycle is fundamental to biological organisms, as it governs the process of cell division and therefore of replication. One of the classic model organisms for

studying the cell cycle in fission yeast. Regulation of the cell cycle in fission yeast has been well characterized [140]. The cell cycle in fission yeast is controlled by 3 modules of its gene-regulatory network that operate at different phases of the cell cycle: G1/S, G2/M, and mitosis. In the G1/S phase, cells grow and replicate DNA. There are 4 key control elements involved in this process (see Figure 2): **cdc2** and **cdc13**, two proteins shared throughout all 3 phases of the cell cycle pair to form complexes that activate key pathways, and **ste9** and **rum1** which maintain bottlenecks via degradation and inhibition of **cdc13** and the **cdc2-cdc13** complex. In turn, **cdc2-cdc13** acts to reduce the activity of **ste9** and **rum1**. As the cycle proceeds through G2/M and mitosis, other players take part in the control of the cell cycle through similar feedback mechanisms. In the cell cycle of yeast and mammalian cells, a number of these interactions involve the explicit control of transcription factors, such as **e2f** and **p53** [47], where **p53** is well known for its role as a tumor suppressor [120]. The interested reader will find ample literature to review on the intricate details of the regulation of the cell cycle starting from [140]. The key feature that we hope to convey to the reader is that the dynamic feedback between the activity of regulatory elements (as manifested by their concentration and localization within the cell) allows the gene-regulatory network to transition between different modes of activity. In the case of fission yeast, this interplay manifests itself as distinct modules that operate at different phases of the cell cycle.

2.4 Significance of GRNs in Developmental Biology

We now consider the evolutionarily conserved Delta-Notch signaling pathway present in metazoans [3]. Delta-Notch signaling was initially studied because of its role in neurogenesis, growth of the nervous system. The intercellular signaling of this system exhibits a lateral inhibition dynamic, where a cell that

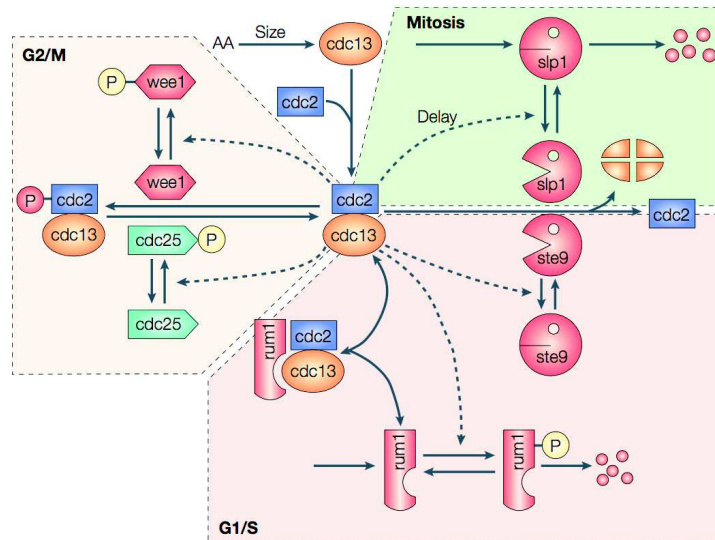


Figure 2: Cell cycle network of fission yeast from [140].

commits to neural differentiation inhibits its neighbors from doing so. This increases the sparseness of cells that commit to a neural fate. The Delta-Notch signaling pathway is regulated by a suite of *achaete-scute* genes that produce transcription factors which both control and are themselves controlled by lateral inhibition [98]. Again, we see that feedback loops are involved in the control of genetically-regulated networks. The Delta-Notch pathway is not only evolutionarily conserved, but plays many roles beyond neurogenesis in development, such as embryonic segmentation in *Drosophila* [99], wing patterning in *Drosophila* [70], and blood vessel formation in mouse [12] and zebrafish [142].

While the Delta-Notch pathway represents a well-studied pathway, genetic regulation is fundamental throughout developmental biology. The patterning of positional cues in *Drosophila* development, such as **Bcd**, a key determinant of anterior-posterior polarity is regulated by multiple transcription factor binding sites with varying binding strengths [114]. Eight key transcription factors

are involved in providing positional information during *Drosophila* development (including **Bcd**), and recent work has shown that it is possible to predict the resultant patterning by modeling the interactions of regulatory elements based upon the underlying regulatory sequences [129]. The role of transcription factors in the patterning of *Drosophila* even transcends the individual organism itself, where maternal inclusion of localized transcription factors in the embryo expedite segmental patterning.

2.5 Significance of GRNs in Evolution

The two primary forms of genetic regulation that have evolved are: transcription factors and microRNAs (miRNAs). While transcription factors are proteins with variable binding affinities to particular regulatory sequences, miRNAs are more simple. miRNAs are short RNA sequences that can bind to regulatory sequences and repress gene products [9]. Both miRNAs and transcription factors are known to be highly conserved throughout evolution; however, a key difference between the two regulatory mechanisms is their binding affinity. Transcription factors can generally bind to a range of sequence patterns with variable binding strength while miRNAs have almost exact binding specificity due to nucleotide complementarity. As a result the rates of evolution of miRNA (slow due to exact binding) and transcription factors (fast due to reduced specificity) have been predicted to differ by approximately 4 orders of magnitude [21].

A fascinating evolutionary mechanism that has played a significant role in the evolution of GRNs is the occurrence of transposable elements. Transposable elements (TEs) are sequences that move and replicate throughout the genome, and are commonly described as genomic parasites [17]. TEs have been clearly shown to be beneficial to hosts in some cases, such as the upregulation of factors leading to pesticide resistance [23]. The dynamics of replicating TEs contribute

to the establishment of sequence motifs that have related sequence patterns. TEs serve as a source of novel and derivative genetic material that can be recycled into regulatory sequences and binding elements [51]. The molecular mechanisms underlying the evolution of gene-regulatory networks are diverse, ranging from protein to RNA binding elements, and effectively form a genomic ecosystem.

2.6 Significance of GRNs in Epigenetics

The expression of genes not only relies upon genetic sequences, but also on the accessibility of the genes. Epigenetics is concerned with heritable traits that are not encoded within the sequence of the genome. Most forms of epigenetics involve altering the physical structure of the sequence, such as wrapping DNA around histones and methylation of nucleotides. Chromatin is a collection of DNA, RNA, and protein that condenses the structure of these molecules, which allows for increased stability, density, and organization. Within chromatin, DNA is wrapped around histones to form nucleosomes. The accessibility of DNA sequences in these nucleosomes has a significant impact on the expression of genes located within the nucleosome [62]. Furthermore, modification of histones further alters gene expression to the extent that gene expression can be predicted from the known modifications [82].

DNA methylation is another form of epigenetic regulation that involves structural modification of nucleotides in the sequence itself. One of the key mechanisms of DNA methylation is physically blocking enhancer and/or promoter regions, thus altering the expression of a gene [80]. Methylation itself is the addition of 1 carbon with 3 hydrogens to an existing structure, in the case of DNA methylation the existing structures are nucleotides. This additional structure is sufficient to modify binding sites to the point of prohibiting interactions

with regular binders of a regulatory sequence. Methylation can be induced by environmental factors [72]. The methylated state of a DNA sequence can be transmitted through multiple cell divisions, as well as across generations [56]. In this way the evolution of GRNs can be impacted by epigenetic modifications, which may be derived from environmental factors that were experienced as a result of genetically-regulated behaviors.

In summary, gene regulation has emerged as a key player in translating the information provided by an organism's inherited DNA into the structure (via growth and development) and behaviour of that organism. Time-scales range from seconds (in case of the regulation of metabolism in neurons [102]) to thousands of years (in case of evolutionary processes). Gene regulatory networks have been compared to the compilers of computer languages that translate code into behaviour of the underlying machine. However, there is much more to the computational modelling of gene regulation and this brings us to our next topic.

3 Computational Gene Regulatory Networks

Artificial gene regulatory networks are a complex example of systems biology [89]. Comprehensive models of the gene-regulatory process would require a large range of complexity, from molecular dynamics to morphogenetic coupling, making complete and exact models prohibitively expensive. As a result GRN models generally focus on particular aspects of genetic regulation, for example, the Gillespie algorithm [58] attempts to capture the stochasticity of genetic regulation without modeling stochastic molecular dynamics. While we primarily focus on computational and evolutionary models of gene regulatory networks in this review, we will also touch on mathematical studies and analyses of the dynamics of GRNs.

3.1 Biological Models

There are a number of approaches that are used for modeling gene regulatory networks [16, 36]. These approaches include differential equations, stochastic simulations, Petri nets, flux balance analysis, graphical models, and more. A number of reviews modeling genetic regulation have been written, many of which primarily focus on biological modeling [81]. We begin our discussion of biological models by introducing the steps of gene regulation and how they are modeled, but ultimately focus on how these models are subjected to evolution.

Gene regulatory networks are commonly modeled with Hill kinetics, which models the cooperative binding of two or more proteins to promoters, enhancers, silencers, and other regulatory regions of a gene. These kinetics are formulated using reaction rules that describe the rates of association/dissociation of a gene and regulatory proteins to form a complex as a function of the cooperativity of multiple binding proteins. The complexes formed by the binding of regulatory proteins are used in conjunction with additional reactions to either directly produce protein products or, more realistically, model the transcription of mRNA which is later translated into protein products.

While the initial approaches to analyzing gene regulatory networks focused on deterministic models, such as ordinary differential equation-based mean-field approximations, the use of stochastic models has been increasing in recent research. Heightened attention to stochastic gene expression has been strongly supported by observations of stochasticity-driven differences between cells with identical genetic background, and by single-molecule experiments [50, 124, 123]. The cornerstone of stochastic simulation of chemical kinetics is the Gillespie algorithm [58], and its extensions for adaptive time steps [59].

It is well known that GRNs are stochastic systems where noise can have a significant impact on resulting cellular behaviors [50]. The occurrence of noise is

generally discussed in conjunction with the common observation of small numbers of some molecular species acting in a GRN, where fluctuations in the concentration of such species can lead to significant changes in network dynamics. However, biological mechanisms have evolved not only to control and eliminate such effects of molecular noise, but also to amplify and exploit it [116]. In a more detailed study of noise cascading through a GRN, [115] show that even in networks that do not involve small concentrations of some molecular species it is possible for noise to have significant effects due to global network modulation and upstream effects.

Biophysical models focus on capturing aspects of genetic regulation that extend beyond the scope of simulating chemical kinetics. This has been heavily utilized in computational models of *Drosophila* segmentation [69, 104], neural development of zebrafish [150], and vascular biology [12], where GRNs tuned to biological networks interact with cytoskeletal and chemotactic behaviors to predict the temporal behavior of vascular dynamics [94]. The same model has also been utilized to show how the bistable dynamics of a GRN can be used to regulate pattern formation for healthy angiogenesis [11, 141].

3.2 Dynamics and Analysis

Mathematical studies of genetic regulation have been driven primarily by the dynamical systems community. As a result, the majority of analytical work has focused on the stability and attractor dynamics of gene regulatory networks. It is important to address these mathematical foundations of gene-regulatory dynamics, as they inform researchers of the capabilities of GRN representations. For example, in the Delta-Notch signaling system discussed in Section 2.4 the previous belief had been that cells would decide on an environmental preference then move to favor that preference. Through a dynamical systems study focus-

ing on the bistable nature of a genetically-regulated model, it was shown that the decisions to move and for location preference operate in parallel [11]. This conclusion was reached by evaluating the dynamic stability of cellular behaviors as a function of cellular phenotype and environmental inputs to the cell's gene-regulatory network. Similarly, the synthetic biology community has begun to use models of GRNs to develop hypotheses for experimental validation [67].

The theoretical biology community has been studying the dynamics of GRNs for many years, beginning with Boolean networks, where genes are defined by on-off states [83, 85]. Mathematical methods have extended this class of models with tools for the analytical discovery of steady states, attractors that the GRNs will tend towards without external stimuli [110]. Such analysis led to the prediction that evolution will drive single cell genetic network dynamics toward greater dynamic stability [84]. In detailed analysis of a Boolean GRN derived from the biology of the cell cycle, [38] show that this ubiquitous GRN is inherently modular with a switch that triggers the completion of the cell cycle after passing a restriction point. These analytical and dynamical studies of Boolean GRNs have led to concrete predictions that can be experimentally verified.

Information theoretic approaches to the analysis of gene regulatory networks often draw upon techniques from statistical mechanics that describe the state space for molecular arrangements, and allow one to relate distributions of biophysical states to information in terms of the entropic cost of molecular configurations. [135] use information theory to show that, given biologically observed noise levels in gene expression, it is possible for genes to encode more than one bit of information ("on" or "off"), a point that becomes particularly pertinent when addressing the representation of GRNs. Through a combined experimental and analytical study [22] show how negative feedback of signaling and transcription can suppress noise, thus facilitating communication between collections of cells.

By drawing upon methodologies from information theory, these studies have shown how cells can regulate the otherwise confounding noise of the biological environment to store and transmit meaningful information.

3.3 Representations

Boolean models of GRNs capture the on-off nature of genes, switching when concentration of proteins crosses threshold values that represent the transition between on and off states [83]. Early studies of this Boolean model investigate the stability and oscillatory dynamics of random Boolean GRNs [85], and later studies show support for the validity of the Boolean GRN model [131]. Arguments for the use of Boolean GRN models often draw upon the quantity of information available from biological experiments, suggesting that the amount of information made available by gene expression profiling is only adequate for training Boolean GRN models [95]. Furthermore, the simplicity of Boolean models makes it easier to map out the state space of a GRN, thus facilitating analysis.

Petri Nets (PNs) are a formalism commonly used in modeling distributed systems [118]. PNs are graphical models that use nodes and edges to represent places and transitions, where places can contain variable numbers of tokens. When used to model GRNs, places represent molecules (proteins, mRNA, complexes), transitions represent possible reactions (excitation and inhibition, including reversibility), and tokens represent concentrations. There is a wide range of PN models that incorporate features such as stochasticity; as a result, PNs have direct relations to Boolean GRNs and the Gillespie algorithm. [108] present an application of PNs to modeling λ -phage gene expression that readily incorporates key relevant molecular species and transition types. The interested reader is directed to [19] for an extensive review of PNs for biochemical models.

To study the network structure effects of a GRN one of the authors of this review in [5] developed a model that uses a sequence of bits to represent a genome, with mobile protein elements that bind based on bit patterns, similar to transcriptional footprints [14]. The features of the model are demonstrated by showing a wide variety of dynamic characteristics, the effects of genetic perturbations, and the evolution of the model with an evolutionary strategy. This bitstring matching representation was simplified to an integer-based representation [31], which has been shown to be effective in numerous applications discussed in Section 5.

3.4 Evolution

While we have focused our discussion on features of gene regulatory networks that are being modeled and analytical approaches to modeling, one of the most powerful approaches to understanding gene regulatory networks is by using evolutionary methods. Gene regulatory networks are evolved reaction networks, and the existence of a naturally observed GRN is prefaced by an evolutionary process that transformed the GRN into its observed state. An understanding of the evolvability of GRNs serves as a basis for understanding why particular gene regulatory mechanisms have emerged.

The ability to evolve the simplified bitstring-based GRN model of [5] to fit multiple mathematical expressions was explored in [93], where oscillatory, sigmoid, and exponential decay functions were successfully matched.

In a stochastic simulation model using the Gillespie algorithm [96] show that a comprehensive GRN model with first-order and second-order reactions, and homodimer formations can be evolved to obtain oscillatory dynamics. A particular challenge of this evolutionary problem is compensating for the noisy dynamics, which can shift the period and amplitude of observed oscillations;

this leads to a need for evaluating each simulation trajectory and aggregating over the results as opposed to observations.

It has been shown that in Boolean GRNs evolving under a gene duplication/divergence model, functionality can be well conserved even under extreme evolutionary conditions [1]. Long term evolution of biologically plausible GRNs using agent-based models show the emergence of evolutionary sensors, genes that sense evolutionary pressures, that allow for rapid evolutionary change in response to environmental variation [28]. In a related study it was shown that under variations in fitness, such as environmental variation, the ability of GRNs to adapt to new environments can be enhanced [45]. In Section 5 we discuss a number of evolutionary methods and genetic representations which have been used in applications of GRNs.

4 Internal dynamics of GRNs

Before applying gene regulation to agent control, researchers have focused on the understanding on the internal dynamics of gene regulation. In 1999, Reil was one of the first to present a biologically plausible model used in an artificial life context [117]. In his work, he randomly generated a set of variable size binary genomes in which each gene started with the particular sequence 0101, named “promoter”. Promoters exist in living systems: a very specific sequence of nucleotides, the *TATA*¹ box, is known to identify a gene’s starting position. As presented in Fig. 3, Reil used a simple visualization technique to observe gene activation and inhibition over time with randomly generated networks. He obtained several activation patterns such as stable, chaotic, or oscillatory patterns. Reil also pointed out that after random genome deteriorations, the system was able to rebuild the same pattern through an oscillation period.

¹*T*=Thymine and *A*=Adenine

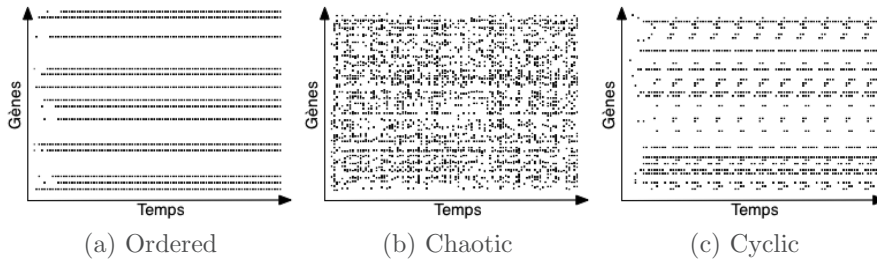


Figure 3: Graphical representation of gene activation with Reil’s artificial regulatory network. Each line represents one gene activation level: Dot means that the gene is activated; white space means it is disabled. Image from [117].

The artificial gene regulatory network proposed in [5] is strongly inspired by real gene regulation. In this work, the genome is coded as a set of 32-bit integer (in other words a bit string). Each gene of a genome starts with a “promoter” coded by the sequence “XYZ01010101” where XYZ is any bit sequence to complete a 32-bit integer. The combination “01010101” has a probability of 2^{-8} in a bit string equivalent to a TATA box from a real DNA sequence. The gene coded after a promoter has a fixed size of five integers (160 bits, each integer having 32 bits). Upstream from the promoter, two integers code for an enhancing site and for an inhibiting site, thus regulating gene expression activity. In this model, all DNA transcription mechanisms are omitted to focus on gene regulation dynamics itself. This kind of genome can produce various activation dynamics, as presented in Figure 4. Randomly generated genomes were used in these experiments.

A key property observed in these networks is heterochrony [6]. As depicted by Figure 5, small changes in the network structure or concentration only imply small changes in network dynamics. This behavior is crucial when the network is evolved for artificial life applications: heterochrony smoothes the fitness

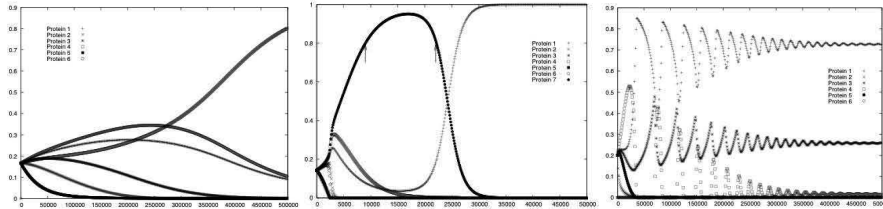


Figure 4: Examples of protein concentration dynamics obtained with the artificial gene regulatory network of [5].

landscape, making it more evolvable. This model has also been used in [18] to analyze the inner temporal dynamics of gene regulatory networks using pole balancing and signal processing benchmarks and its capacity to reproduce input signals within a delayed timeframe.

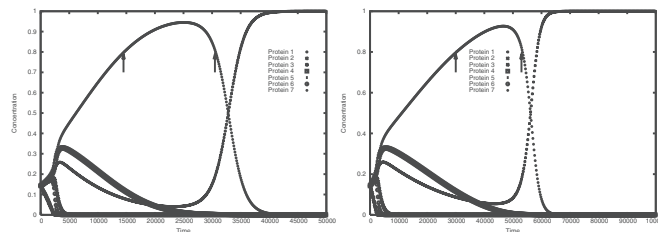


Figure 5: Example of heterochronic control in gene regulatory networks: by mutating one bit of a protein, the regulation dynamics only slightly changed.

Pictures and videos have been employed to visualize the dynamics of GRNs and observe the complexity of the behaviors generated. In a contribution by another author of this review [32] the GRN, cloned to every pixel of the picture, computed the RGB components of each pixel of the picture. Each GRN used the pixel coordinates (input proteins) to compute the color component (output proteins). GRNs were evolved using interactive evolution: users were tasked with selecting the most beautiful images, and GRNs were mutated and

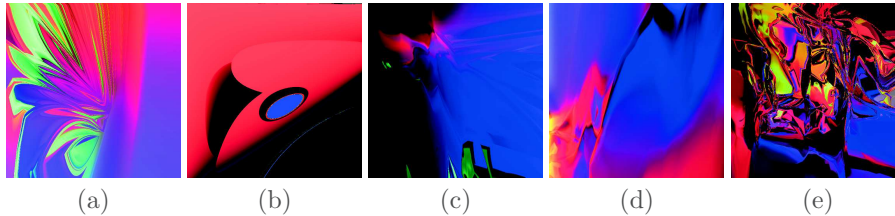


Figure 6: Examples of pictures generated with a gene regulatory network. Image from [32].

recombined based on this selection mechanism. Some of the generated pictures, representing a snapshot of the network dynamics, are presented in Fig. 6, while Fig. 7 presents screenshots of videos². This work allowed to explore possible behavioral structures generated by gene regulatory networks. For example, in picture (b) of Fig. 6, repetitive patterns can be observed with some modifications. That shows the capacity of gene regulatory networks to produce modular patterns. Pictures (b-d) also show the ability of the GRN to produce both smooth or abrupt variation as codified here in color transitions. Finally, picture (e) depicts the GRN's capacity to produce extremely complex behavior, with very different outputs for close input values. More details about properties highlighted in these pictures can be found in [32].

Videos can capture the temporal aspect of gene regulation. As presented on Figure 7, oscillatory behaviors can be easily visualized. Other videos show chaotic and steady-state behaviors, which are the two other main behaviors of gene regulatory networks in addition to oscillations.

The computability of gene regulatory networks has been studied extensively over the past years. A full review of computability in GRNs can be found in [103]. Artificial GRNs have also been used to investigate a number of questions in the context of evolution. Using Reil's DNA-like model, Rohlf

²More examples and the software to generate pictures and videos can be found online: http://www.irit.fr/~Sylvain.Cussat-Blanc/ColorfulRegulation/index_en.php

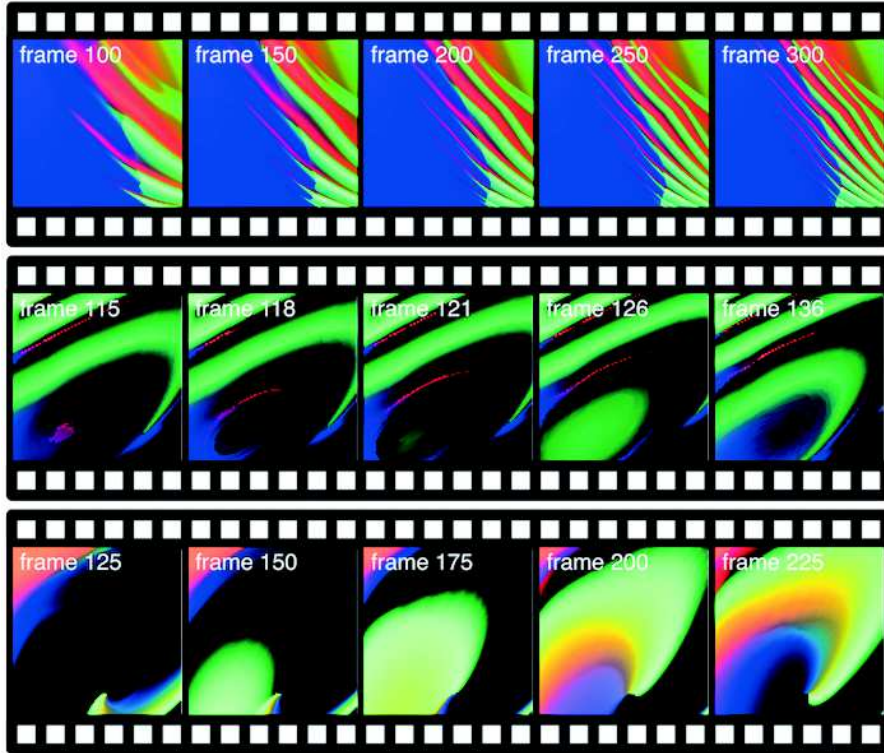


Figure 7: Examples of videos generated with a gene regulatory network.

and Winkler studied the evolvability of GRNs and showed a strong relationship between their robustness against noise and their robustness against genetic material deletions due to the evolutionary process [119], which are key properties in real-world applications. Schramm et al. investigated the role of redundancy in artificial gene regulatory networks [127], showing that genetic redundancy can enhance evolvability up to a point, after which greater redundancy becomes deleterious. Genetic networks were able to evolve modular genotypes when subjected to dynamic fitness landscapes [100]. Recent work has shown that evolved GRNs can achieve greater hierarchical modularity than neural networks [107].

Numerous studies remain to be performed regarding the evolution of GRNs, and some of those can be approached from the perspective of artificial life which is our next topic.

5 Gene Regulatory Networks and Artificial Life

Similar as in Nature, the role of (artificial) gene regulatory networks in artificial life and evolutionary computing systems is manifold. In general terms, GRNs impact our understanding and implementation of the genotype-phenotype map in those systems, notably the non-linearity between those representations. In this section, we shall discuss some of the most important applications.

The phenomena produced by GRNs can be classified into (i) interactions between genes through their expression products, (ii) spatial patterning of expression, and (iii) temporal structuring of expression. There is a close connection between those phenomena and applications, where spatial structuring enables embryogenesis and design, temporal structuring allows for development and dynamic control of agents, and interaction among genes (and their products) allows for neuromodulation and indirect encoding of various structures.

This section presents the main application work using artificial gene regulatory networks. Their use started in artificial embryogenesis, described in section 5.1, which aims at reproducing the development of multicellular organisms. These models are perfect theoretical frameworks to develop, improve and understand gene regulation in a set up comparable to or inspired by biological examples. Following this period, researchers started to use these models to solve real world problems. Due to their intrinsic ability to control behaviors of cells, artificial gene regulatory networks were first transferred to agent-based systems, discussed in section 5.2 in more detail. In this case artificial GRNs are used to produce agent behavior by using an agent's sensors as input proteins

to an AGRN and using an agent's actuators to be controlled by the AGRN's output proteins. First real world applications were taken from evolutionary robotics. Successful applications in virtual agents then led to more recent work using AGRNs as neuromodulators in neural network based learning systems (see section 5.3 or as indirect encoders for neural networks or genetic programming trees (see section 5.4).

5.1 Artificial GRNs in Artificial Embryogenesis

The previous section provided an explanation of the dynamics and properties emerging from gene regulation. In this section we discuss applications of artificial gene regulatory networks. One of the most obvious ones is artificial embryogenesis. Artificial embryogenesis draws inspiration from biological mechanisms involved in the growth of a living organism, from the initial single cell zygote to a whole mature organism. In this process, gene regulation is a central mechanism that controls a wide range of interactions between the cells and their micro-environment. Therefore, artificial gene regulatory networks have frequently been used in artificial embryogenesis. They have been employed to control cells, their cell cycle regulation (when to divide), their migration strategy, and their specialization (color or function). This section provides an overview of existing models of embryogenesis that are based on artificial gene regulatory networks.

5.1.1 Background on Pattern Generation

Turing produced the first work on modeling morphogenetic development in 1952. He suggested that a reaction/diffusion model could capture cell development from a chemical point of view [138]. In his model, a set of differential equations governs the dynamics of morphogen concentrations in an environment. Even

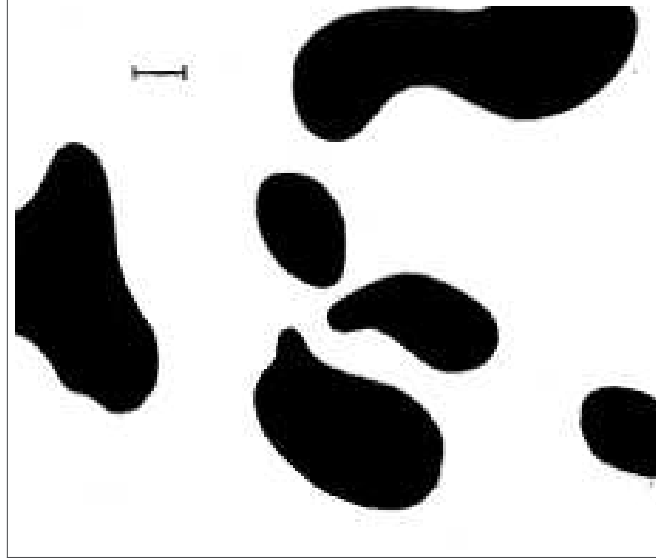


Figure 8: Example of a dappled system obtained with Turing's reaction/diffusion system. Image from [138]

though this seminal work did not include any discrete form of cells or genetic regulation, Turing's model has served as the basis for most of the past and current models of artificial embryogenesis and patterning [109].

Turing's model was mainly used to describe lower level phenomena such as chemical substance diffusion in the environment (see Fig. 8). Bio-inspired mechanisms have been used to add cells interacting with this environment, mainly for the diffusion of morphogens produced by organisms such as in [53, 48, 117, 5, 92, 133, 75, 31, 90].

At the cellular level, cellular automata, proposed by von Neumann in the 1950s, are considered a key contribution. At the time von Neumann was working on self-replicating machines. He stated the hypothesis that a system able to manipulate elementary components could be capable of constructing a copy of itself. Due to the technical complexity of building such a machine, he imag-

ined a universal automaton able to pick up and to assemble arbitrary components. During the same period of time, the mathematician Ulam was working on recursively-defined objects. Recursive objects are defined as cells in an infinite matrix, which can have two states: active or passive. Cells evolve over time following rules based on their neighborhood. Ulam proposed von Neumann to use this kind of an environment to avoid technical problems with his "universal constructors". Von Neumann was successful with a proof for his universal constructor and in 1966 the theory of von Neumann's self-replicating machines, implemented as "cellular automata" was posthumously published in [143].

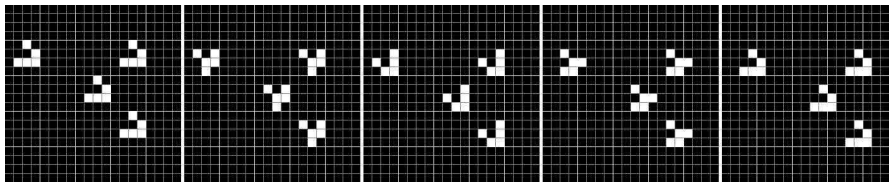


Figure 9: Example of shape produced by the Conway's game of life. Shown here is a glider, able to move in its environment across the grid, time step after time step.

In 1970, Conway defined the famous "game of life" cellular automaton [25] in which cells have only two states (dead or alive) and two simple rules using a Moore neighborhood. Depending on the initial environment configuration (repartition of living and dead cells at the beginning of the simulation), several shapes emerged and were able to move, to reproduce, or to merge (see Fig. 9). In 1999, de Garis encoded the transition rules of a cellular automaton into a genome evolved with a genetic algorithm [35]. He observed that, using a von Neumann neighborhood, only 14 states were possible for a cell in a 2-D environment at each time step. This allowed a simple coding of the rules in a genome, enabling evolution with a standard genetic algorithm. With this setup, de Garis was able to produce several simple shapes, e.g., triangles and squares,

etc., or more complex shapes like letters, turtles, and snowmen, as illustrated in Figure 10.

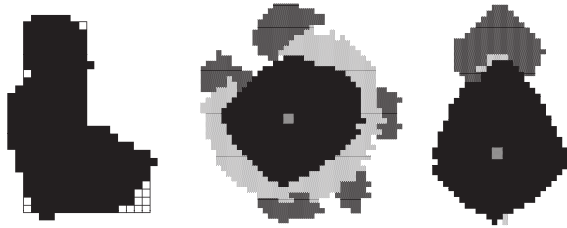


Figure 10: Examples of shapes produced with cellular automata. Image from [35]

5.1.2 Simulating Cell Differentiation

While the previous work was focused on developing shapes, cell differentiation is one of the key aspects for simulating artificial embryogenesis. In a natural developmental process, cell differentiation dictates the specialization of a cell type. Starting from a unique cell, it allows the creation of various cell types, such as neurons, muscle cells, liver cells, etc. which will have very different functions in organisms. In 1969, Kauffman introduced Random Boolean Networks (RBN) [85] to simulate this feature. The interpretation of this regulatory network was simple: each node controls a gene and the node state represented the gene activity (activated or inhibited). The genome transcription produced the cell's final function.

In 1994, Dellaert and Beer proposed a developmental model using this network [37]. In his model, a Boolean network represented an artificial regulatory network for cell differentiation control. Boolean networks were at the time (and still are) classical approaches in computational biology to simulate gene regulatory networks of real living systems. In this work, the authors used a 2-D matrix that allowed simple cell divisions: the initial organism was made of only

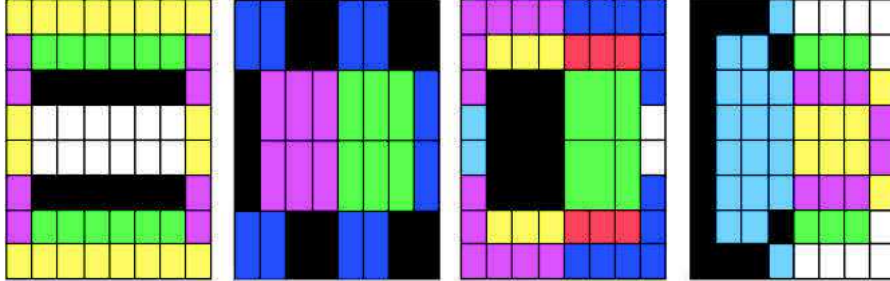


Figure 11: Illustration of Dellaert’s developmental model. A random boolean network was used as an artificial gene regulatory network in order to produce user-defined shapes and cell differentiations (colors). Image from [37]

one cell that was covering the entire grid; during the first division, the grid was split into two horizontally or vertically (division plane orientation was controlled by the genome) and the new cell could differentiate. The aim was to visually observe cell differentiation by a modification of the cell color and explore the capacity of Boolean networks to produce various shapes with the help of a genetic algorithm. Dellaert obtained several shapes, such as presented in Figure 11.

In 1997, Eggenberger-Hotz explored asymmetric division and division plan control with a model able to produce a simple creature with a user-defined shape. This creature was able to move in the environment actuated by an artificial gene regulatory network [48]. With this purpose, the model was able to simulate natural mechanisms of asymmetric cell division [68]. This kind of division allowed cell differentiation by producing daughter cells with different proteins. The regulatory network produced a specific protein used to adjust the orientation of the cell division plane and the division timing. The regulatory network also controlled cell physical dynamics and its own gene regulation that corresponded to adhesion coefficients between cells. Cells periodically emitted

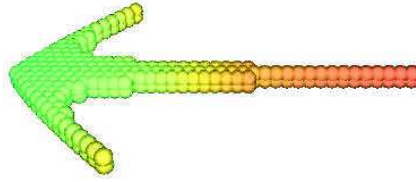


Figure 12: Eggenberger-Hotz’s ‘T’ creature, able to move in the environment by modifying its morphology, induced by the artificial gene regulatory network. Image from [49].

molecules that modified adhesion parameters between cells and the environment. With this set-up, Eggenberger-Hotz produced a growing creature with a ‘T’ shape. It was able to move in the environment by modifying its morphology [49].

In 2004, Bentley used fractal AGRNs, in which genes are expressed as fractal protein subsets of the Mandelbrot set, with the proteins interacting through a fractal chemistry, to show that this structure can produce complex growing shapes with a very small amount of genetic material [13]. The system demonstrated the capacity of GRNs – when associated with a developmental process – to compress the data necessary to generate shapes and behaviors. Krohn studied the dynamics involved in this process and applied a fractal AGRN to classical control problems such as mountain car driving and pole balancing [91].

In 2005, Flann et al. used a graph implementation of an artificial regulatory network to develop pictures composed of differentiated cells (illustrated by Figure 13 [52]). Similar to Dellaert, the aim was to explore differentiation mechanisms in cells but here with an increased level of complexity in terms of shapes produced. In the graph in the lower third of the figure, each node represents the expression level of a distinct protein, and each edge represents the interaction between proteins. In this model, cell coloration (see upper panels of the figure) revealed the cellular differentiation. Whereas simple shapes were easily

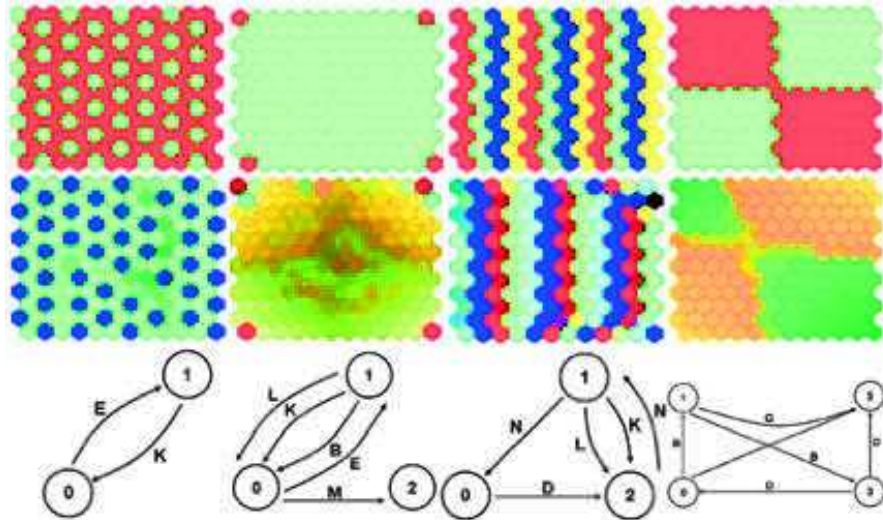


Figure 13: Examples of shapes produced by Flann's regulation network. The first line of images shows desired patterns, the second line shows the best obtained patterns after genetic evolution. The lower half shows the corresponding regulation networks. Images from [52].

produced with this kind of network, the use of multiple networks in parallel was necessary to produce more complex shapes. In this case, protein concentration levels had to be combined to determine the global gene activity.

Chavoya and Duthen developed an artificial gene regulatory network model in 2008 to solve the French flag problem [20] that was inspired by the model in [5]. The goal was to explore the coevolution of shape and color, *i.e.* cell differentiation, both controlled by the same AGRN. Illustrative results are presented in Figure 14. The authors used a cellular automaton to generate the shape, based on de Garis' work, where rules were enabled or disabled by the artificial gene regulatory network. Moreover, morphogen gradients, pre-positioned in the environment, gave localization information to cells and generated further information for the artificial gene regulatory network. The authors obtained per-

fectly scalable flags and furthermore several shapes such as multicolor squares, triangles, polyhedrons (3-D), etc.

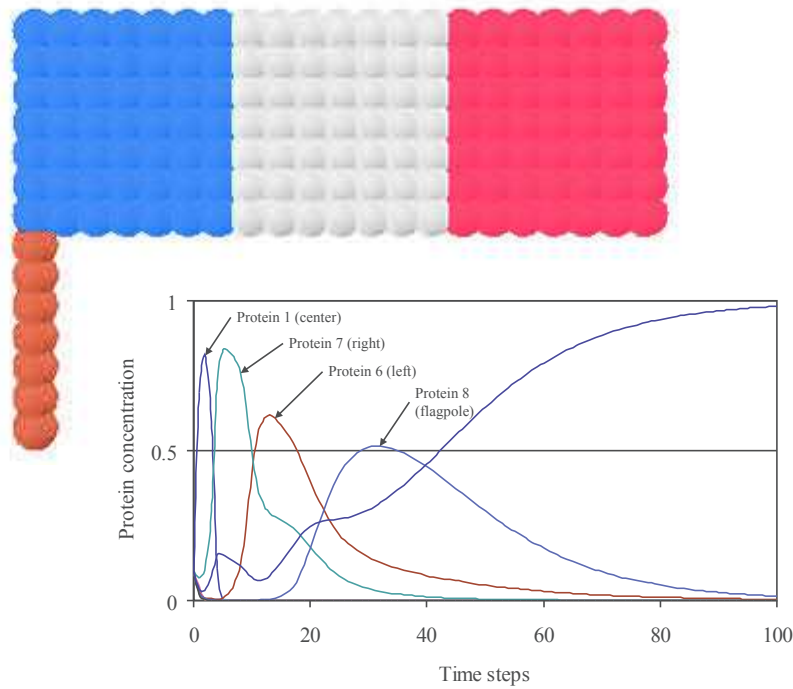


Figure 14: Chavoya’s French flag and its protein concentration curves. This problem puts to the test cell differentiation capacities of developmental models. Here, differentiation is indicated by color shifts. Image from [20]

Also in 2008, Knabe et al. proposed a model close to Chavoya’s. Their approach employed an artificial regulatory network in which Chavoya’s cellular automaton was replaced by a cellular growth system [90], Cellular Potts models [61], which were en vogue at that time in biological simulations of cell proliferation. Cells acted in a pixel matrix. They grew by absorbing free pixels and following a development axis controlled by an artificial gene regulatory network. The latter mechanism indicated its growth direction to the cell with its ratio

$\frac{height}{width}$ and its current shape. When a cell was composed of 24 pixels, it started its mitosis by dividing according to an axis orthogonal to the last division axis. This division axis could also be modified by the regulatory network. Here, two morphogens were used to determine cell color. However, in this model, morphogens were not pre-positioned but produced by the cells. Therefore, cells had to regulate the morphogen production to obtain the appropriate concentration according to the final shape given by the user. Knabe tested his model with the French flag problem and used a genetic algorithm with a fitness function that evaluates the difference d between the tested individual T and the expected pattern R^i of size $w \times h$:

$$d(R^i, T) = \frac{1}{wh} \sum_{x=0}^{h-1} \sum_{y=0}^{h-1} |sgn(R_{xy}^i - T_{xy})|$$

The results obtained (illustrated in Figure 15) were close to the expected pattern in 75% of cases.

In his study of complex systems, Doursat used a model based on gene expression levels to simulate the developmental process of complex shapes [42, 43]. An artificial regulatory network composed of three layers was used:

- A first layer used positioning data given by morphogens.
- A central layer contained “boundary” nodes which allowed a horizontal and vertical segmentation of the embryo. Gene regulation was also managed with this layer thanks to the production of activator and inhibitor proteins.
- A third layer determined the regulatory protein production thanks to the concentrations of activator and inhibitor proteins produced by the second layer.

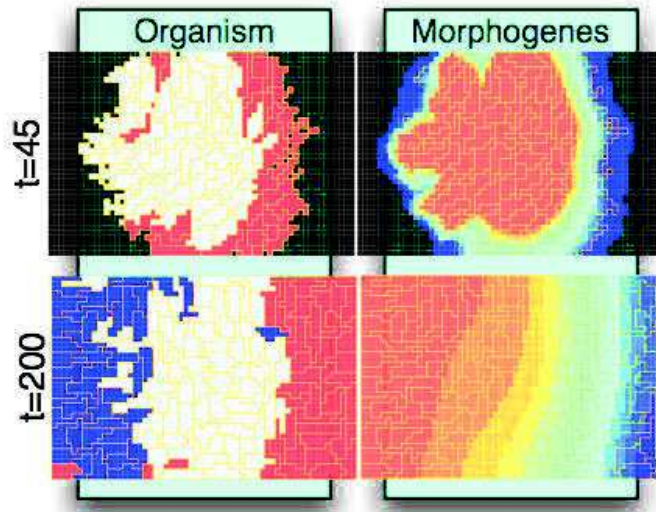


Figure 15: Example of French flag growth with Knabe’s model. Top: Organism development status can be observed at simulation step 45 with this organism itself (on the left) and the morphogen gradient produced by the organism (on the right). Bottom: Final organism, at the end of its growth (simulation step 200). Various cell shapes can be observed and cells are correctly differentiated to produce a pattern close to the expected one. Images from [90].

This regulatory network depended on a developmental model built with two simple rules:

1. Cell *division* allowed each cell of the organism to divide with a particular probability,
2. Intercellular adhesion forces, based on a mass/spring, kept the global consistency of the organism.

In this developmental system, a 2-D environment contained two kinds of morphogens that allow cell positioning. Starting from an initial cell cluster, Doursat

produced an organism in which several differentiated areas appeared due to cell differentiation. Many shapes were produced like the salamander presented in Figure 16(a). In the salamander morphology, several differentiated areas, highlighted with different cell colors, are observable: legs, abdomen (divided up in six pieces) and the head (also divided up in ten pieces). Doursat was able to manipulate an organism’s morphology simply by modifying experimental parameters (especially weights and functions implicated in the regulatory network). The same initial cell cluster was used with different parameters to produce an eight-legged organism at the end of the developmental process (Figure 16(b)).

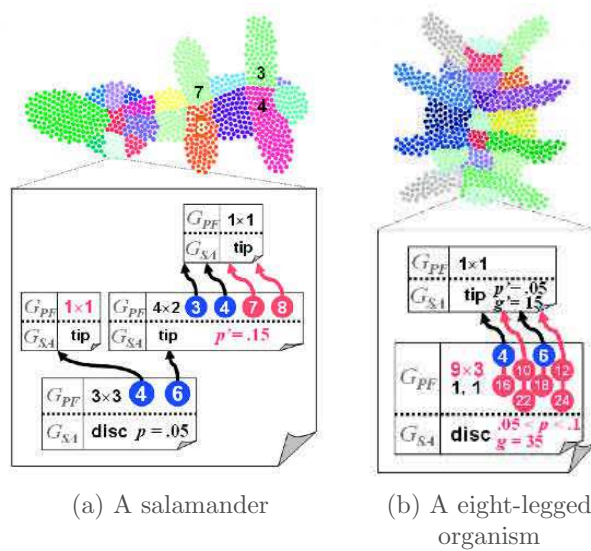


Figure 16: Developed shapes and an overview of corresponding artificial gene regulatory network of Doursat’s developmental model. Images from [42].

Joachimczak and Wróbel proposed, also in 2008, to step up to the third dimension and into continuous space, substantially increasing the complexity of the models [75]. Every cell had an artificial gene regulatory network and regulated a quantity of morphogens produced on its own. These morphogens

led the development of daughter cells in the environment. Cells had various sizes, depending on their stage of evolution. The organism's genome was one of the strengths of this model because of its capacity for complexification over generations. It was composed of a list of "genetic elements" where each element has a specific type with different functions during the genome parsing stage. The main types are:

- *Regulatory elements*, also called promoters, that regulate the activation of genes,
- *Genes* were products or substrates produced by the cell and are used to give pieces of information to the regulatory elements. They could be internal (intracellular), external (extracellular, also called morphogens) or receptors (interact with external products and influence the cell division axis), and
- *Special elements* that coded the outputs of the regulatory network.

Affinities (the concentration value of the morphogens) were computed between promoters and products. They created connections between the regulatory elements that finally built a regulatory network. Simple shapes like screw nut or dumbbell could be produced with this model. The same authors showed in their most recent work the differentiation capacity of cells by extending the French flag problem to the third dimension [76]. Figure 17 illustrates these experiments. Self-repairing was a further property of this model: When a certain number of cells were killed at the beginning of the development, the organism was able to regenerate a shape to the desired pattern.

In 2011, one of us with co-authors used a discrete developmental model in which cells were controlled by an artificial gene regulatory network in order to produce 2-D colored shapes [29]. In contrast to the previous model, the growing

organism was required to develop a metabolism based on an artificial chemistry defined in the environment. The model was based on the coevolution of a bit-string artificial gene regulatory network that controlled the cell specialization into different colors, and a rule set that controlled the proliferation of the cells. Both were evolved using an evolutionary algorithm: the rule set to produce a shape and the necessary metabolism to survive, and the artificial gene regulatory network to specialize the cells as targeted by the user. The authors showed how morphogen gradients guided the AGRN to the regionalization of the cells. Figure 18 illustrates this model.

The models described in this section inspired many researchers to develop their own artificial regulatory networks or to apply such systems to specific problems. As one of many possible examples, Bongard and Pfeifer used a model close to Reil's model to develop modular robots [15]. These robots had a neural network that controlled each module (for rotation, elongation, etc.). The genetic expression of the artificial gene regulatory network allowed the activation or the inhibition of 23 phenotypically predefined transformations, such as module size growth, module division, parameter modifications, neural network topology, etc.



Figure 17: Example of organisms produced with Joachimczak's model: On the left, a dumbbell; on the right, a 3-D French flag. Images from [75, 76].

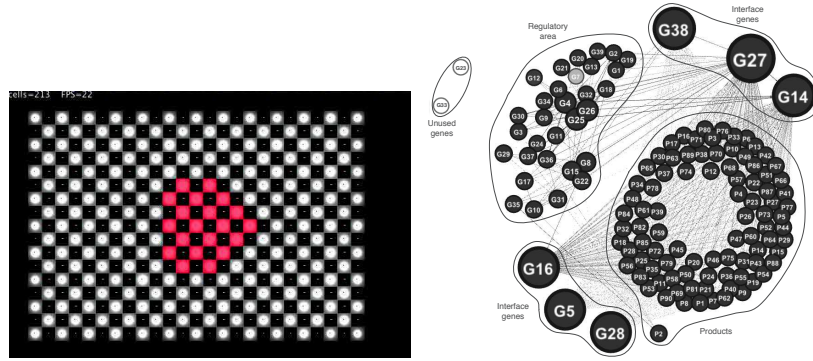


Figure 18: Multicellular organism with metabolism growing in a chemical environment with specialization skills. On the right, the artificial gene regulatory network obtained and interaction between its genes. Images from [29].

5.1.3 Morphology and Controllers

Based on their previous work, Schramm et al. used an artificial gene regulatory network to evolve both the morphology and the controller of virtual animats [126, 78, 73, 74]. The morphology was grown from a single cell using a developmental model comparable to the one presented above. The artificial gene regulatory network was then used to control the cell behavior (cell division, division plane orientation, etc.). After a given developmental time, the morphology was frozen. The cells were transferred to a simulated aquatic environment and the cell aggregate was transformed using Delaunay triangulation to a set of masses (centers of the cell) and springs (cell connections). The artificial gene regulatory network previously used to control the growth of cells was now used to control the spring stiffness in order to move the animat in the environment. AGRNs were evolved to reach the maximum distance. Figure 19 presents one of the animats obtained with such a method.

Such approaches bring artificial creatures closer to resembling living systems.

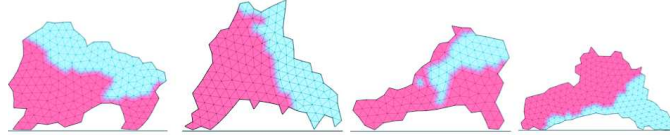


Figure 19: Animats first grown with AGRNs controlling cells in a developmental model and then moving in their simulated environment. Image from [74].

Living systems learn locomotion and everything else during their entire life, from the very few first cells to the end of their lives; however, most previous work does not take this into consideration and uses a fixed morphology. In this domain, AGRNs paired with a developmental model can exhibit powerful solutions, given their capacity of adaptation to changing environments. The oscillatory behavior of AGRNs has been used to control ATRON's modular robots [149]: the robot, possessing a snake-like structure, can be successfully controlled by an artificial gene regulatory network with the fractal representation [13].

In all previous work, artificial gene regulatory networks and developmental models have been used with a specific objective described by a fitness function of the evolutionary algorithm. However, living beings do not act in the environment with an explicit life-long objective function. While using a fitness function helps to quickly obtain interesting results and simplify the analysis of the creatures obtained, it can trap the system in a local optimum due to the engineering of the fitness function itself.

In 2014, Doursat and Sánchez gave an overview on how co-evolution of morphology and controller using evolution and development can help to generate multicellular soft robots [44]. After classifying existing approaches in modular/soft robotics into four different categories of morphogenetic engineering³, from human assembly (constructing) to rewriting/inserting (generating), pass-

³The science of engineering growing systems.

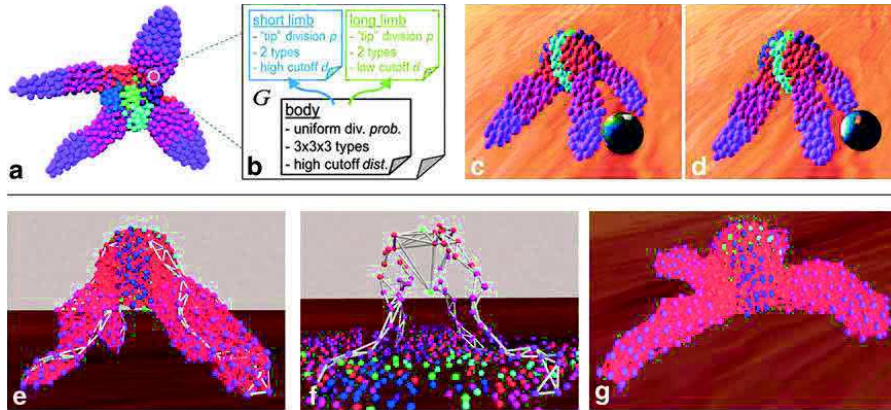


Figure 20: Example of robot "grown" using MapDevo3D. (a) The robot morphology; (b) Its modular organization; (c-g) the robot immersed in a physics engine. Image from [44].

ing through syncing/swarming (coalescing) and growing/aggregating (developing), they present the three key components of their system, MapDevo3D, a multicellular soft-robot-growing platform:

- Cells (represented as a swarm) can adhere through elastic forces,
- Positional information (morphogenes) can diffuse in the environment for cell-cell communication,
- An artificial gene regulatory network can control cells.

With this system, the authors grew a 3D multicellular organism composed of hundreds of cells of 27 different types, organized in "tissues" (i.e. modules) able to walk across the environment and climb stairs. Figure 20 illustrates this experiment.

Disset et al. proposed in 2014 to simplify this fitness function and build a virtual environment complex enough in order to allow creatures with complex behaviors to emerge [39]. The fitness function was extremely simple: The arti-

ficial creature (and thus the artificial gene regulatory network that controls its cells) was evaluated based on its survival duration. The evolutionary algorithm, which evolves the AGRN, could explore all the possible strategies to reach this aim. In these first experiments, the authors proposed to evolve 2D creatures fighting against harmful particles. Cells could, in addition to classical division and communication with morphogens, specialize into two different types: nutritive (capacity to extract energy from the environment) and protective (capacity to resist to the particles). Cells had to self-organize in order to survive as long as possible.

In 2016, this work was extended to the third dimension and explored the developmental strategies in a more realistic environment in which cells must proliferate both in soil that contains nutritive resources and in the air where sunlight transform the nutriment into energy [40]. Once again, the fitness function only consisted of the survival duration of the organism. In this experiment, the results were first deceptive: evolution was stuck in a local optimum. The authors explored novelty search strategies in order to surpass this deceptive result. While novelty search has already been used in previous work on artificial embryogenesis [79], authors obtained complex growth strategies as, for instance, the one presented in Figure 21, with simple diversity measures balancing the survival duration objective.

5.1.4 Bridging the Gap to Reality

While up to this point computational simulations of GRNs have advanced beyond the reach of synthetic biology, biological engineering has been rapidly catching up, with applications from recording images [97] and basic image processing [134] using engineered microbes to quorum-sensing regulated drug delivery [151]. A number of computational elements have been developed using synthetic biology [66], and the development of BioBricks [130] has stimulated a

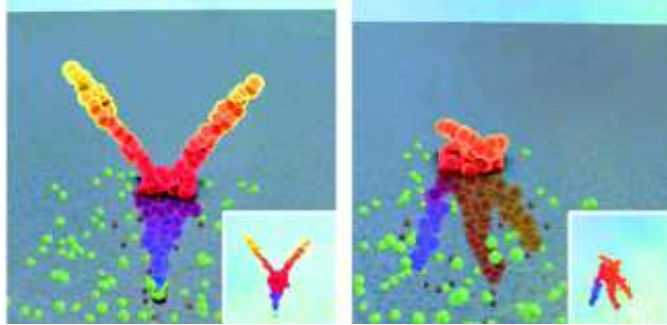


Figure 21: Example of creatures obtained with an AGRN controlling growing animats without an explicit fitness function in the evolutionary algorithm.

movement in synthetic biology akin to the early days of electronic engineering. The limits of phenomena that can be understood from the perspective of biological circuit engineering have yet to be discovered [65]. The field and future of synthetic biology is well beyond the scope of this review, and so we direct the interested reader to some of the extensive reviews of the field [86, 24, 55].

5.2 Agent Control

Artificial embryogenesis was one of the first applications of artificial gene regulatory networks. Because AGRNs serve as the central controller of living cells, artificial embryogenesis was a perfect and natural framework to develop the models and explore their capabilities. Once they reached a “satisfying” level of quality, researchers started to evaluate possible use of these controllers in different types of applications, more oriented towards real world problems. This section presents the use of artificial gene regulatory networks of different kinds in the control of virtual agents.

One of the first application of artificial embryogenesis was to use an artificial gene regulatory network to control a pole cart [113, 91]. This experiment is a

typical benchmark in the evolutionary computation community which consists of balancing a pole on top of a cart. The cart's motion (left or right, with no possibility to stay put) is in a one dimensional continuous environment of limited space. The controller senses the position of the cart, the pole angle, the cart velocity, and the angular velocity of the pole. This benchmark has been solved with multiple machine learning approaches [10, 146].

In 2010, Nicolau et al. used a bit-string artificial gene regulatory network based on the model in [6]. The model included input and output proteins connected to the sensors and the effectors of the cart. These proteins had specific hand-designed signatures and their concentrations were updated differently than regulatory proteins: input protein concentrations were not regulated by the network but fed by the cart sensors and output proteins were regulated but did not regulate other proteins. In order to evolve the GRN to find the optimal controller, a (250+250) evolution strategy (ES) with up to 50 generations was used with a mutation consisting of mutating 1% of the genome bits with a 1/5 adaptation rule. The authors showed rapid convergence of the ES-evolved GRN with very good generalization capability of the network. Using the generalization test from [146], the evolved AGRNs showed close to optimum generalization behavior. With the same model, Nicolau et al. demonstrated later a decision making system for index trading. The system decides to buy, sell or do nothing according to the fluctuations of trading indices provided [112].

A similar experiment was developed by Trefzer et al. in 2010 in which an artificial gene regulatory network was used to solve various obstacle-avoidance tasks (cave, maze, distributed obstacles) [137]. Interestingly, the problem was implemented on an E-Puck robot, which shows the capacity of AGRNs to bridge the gap to reality. This work was recently extended with artificial epigenetic networks, in which artificial gene regulatory networks are used as the central

system to dynamically distribute control tasks [139].

AGRN models have been employed to control agents in ecosystems for foraging tasks. [77] presented AGRNs were expressing rich dynamics and motion patterns. In [63] evidence was presented to suggest that competitive dynamics in an ecology of genetically-regulated agents can stimulate the evolution of complex behavior.

In a complex environment, Sanchez and Cussat-Blanc used an artificial gene regulatory network to control a virtual car in TORCS, a simulated car environment [125]. In this work, an artificial gene regulatory network’s input proteins were connected to the car sensors (distance to the track border and longitudinal and lateral speeds, see Figure 22) and the output proteins to the actuators (wheel, accelerator and brake). After evolution on asphalt tracks only, the best network obtained was able to drive on any kind of tracks (turn shapes, etc.) and on other surfaces (asphalt, ice, rocks, etc.). Figure 22 shows the best AGRN obtained after evolution. This approach was extremely competitive with another approaches from the literature: it was able to win the Simulated Car Racing Championship⁴ in 2015 against 8 other competitors of various kinds (neural networks, optimized scripts, etc.).

5.3 Neuromodulation

Recent work has begun to make a connection between learning and genetic regulation. In [64], the authors studied a robot navigation problem with a robot controlled by a temporal-difference reinforcement learning agent. By introducing a neuromodulatory system governed by a GRN to control the agent’s learning and memory, the robot was able to outperform traditional reinforcement learning. In a follow-up study, the ability of the genetically-regulated neuromodulation system was utilized under a multi-task setting, where agents had to solve an ar-

⁴<http://cs.adelaide.edu.au/~optlog/SCR2015/index.html>

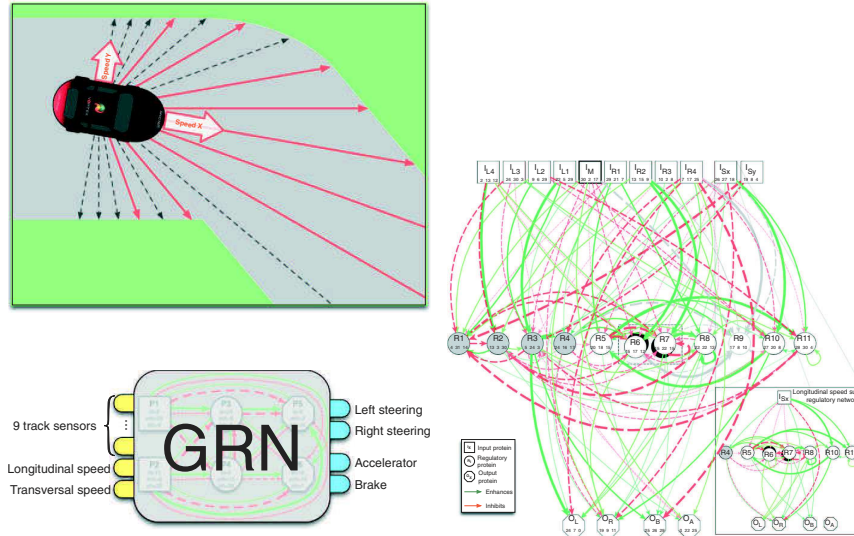


Figure 22: Gene regulated car driving. Left: Inputs of the artificial gene regulatory network from the car sensors. Right: Evolved artificial gene regulatory network. Image from [125].

ray of different problems with both discrete and continuous state spaces, as well as one-shot and continuous rewards [30]. Agents were required to learn to solve a series of problems, while the same AGRN was used to regulate the learning parameters for each problem. It was shown that an evolved GRN could accelerate the learning of multiple tasks, and general problem solving GRNs could improve learning beyond traditional reinforcement learning.

5.4 AGRN as Indirect Encoders

By exploiting previously developed algorithms for the genetic programming of register machines, [7] realized an artificial chemistry implementation of genetic programming. The asynchronous evaluation of the evolved program represented an alternative approach to genetic programming based on the parallel nature of chemical systems.

In 2012, Lopes and Costa implemented a similar idea of using a bit-string artificial gene regulatory to indirectly encode a GP tree [105]. The AGRN was evolved using an evolution strategy. Before evaluation, genes following promoter sites expressed operators of the GP tree and the inhibitor and enhancer sites were used to connect the operators one to each others. This indirect encoding was used by the same author in 2015 to evolve programs in symbolic regression problems (n-bit parity, squares, Fibonacci series, etc.) with promising results in term of quality of solution and very small programs generated[106].

In the same period, Wróbel et al. proposed to use artificial gene regulatory networks to encode artificial neural networks [147, 148]. Using a leaky integrate-and-fire model of a spiking neural network [34], regulatory units (equivalents to regulatory proteins) were encoding for the neurons of the regulatory network, connections between neurons were given by protein connections through inhibiting and enhancing sites and the protein concentrations were providing the potential of each neuronal membrane. With this encoding, the authors showed the capacity of the produced SNN, after evolution of the AGRN, to reproduce spikes when input stimuli were of high enough frequencies. Recently, indirect encoding of recurrent neural networks into genetic networks were used to solve dynamic problems such as state space targeting in a numerical dynamical system, the inverted pendulum, and orbit transfer control in a gravitational system [139].

The approaches introduced here are still in the early stages of their development, yet they are growing in complexity. The main objective of them is to use an AGRN's very compact encoding to evolve large networks: An AGRN possesses a small genome in comparison to the millions or billions of parameters needed to optimize a deep neural networks, for example. This compact encoding is expected to reduce the computation cost of optimization, as in Nature.

5.5 Summary of the Applications

Artificial Gene Regulatory Networks have been studied in a variety of contexts and applications, from dynamical systems to circuit design. In Table 1 we have listed key references for applications of AGRNs of which we are aware. Early research on AGRNs focused on the study of dynamic behaviors of networks using a wide range of representations. Recently, advanced applications of AGRNs have favored the use of bit strings and ODE-based models. As research on AGRNs continues, we expect that applications will continue to utilize and extend such models.

Figure 23 presents the partitioning of citations of the papers from Table 1 in the different categories of dynamics study, evo-devo, i.e. artificial embryogenesis, agent control, neuromodulation and indirect encodings over the years. We take this as an indicator of research interest in each topic. The publication year of a publication is calculated backward from 2017 in 5-year bins. Interestingly, we can observe a massive increase of publications at the beginning of 21st century and the appearance of first applications. Evo-Devo has been a dominant

Problem	AGRN Representations		
	ODEs	RBN	Bit strings
Dynamics analysis	[100] [31] [32] [127] [91] [107]	[83] [85] [110] [84] [38] [131] [1] [28] [45]	[117] [5] [6] [93] [96] [119] [18]
Morphogenesis	[138] [48] [49] [13] [52] [75] [42] [76] [43][29] [15] [73] [74] [126] [39] [40]	[37] [20]	[90]
Agent control	[77] [91] [4] [149] [125] [73] [74] [63]		[113] [137] [112] [139]
Neuromodulation	[64] [30]		
Indirect encoding	[147] [148]		[7] [105] [139]

Table 1: Summary of references for applications of AGRNs

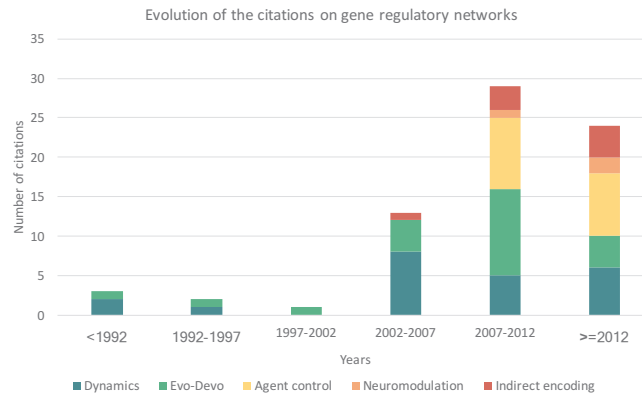


Figure 23: Partition of citations of artificial gene regulatory network approaches over the years.

benchmark to support the theoretical development of artificial gene regulatory networks (certainly due to the fact that it is a very natural use of these networks) up until very recently (2012). However, since 2012, Evo-Devo topics seem to be decreasing in frequency⁵ and the field appears to be transitioning to more real-world applications of gene regulation (agent control, neuromodulation and indirect encoding). This seems due to a certain maturity of the technology and a better understanding of AGRN functioning. It also has to be noted that theoretical publications are still necessary to further develop artificial gene regulatory networks, since knowledge of their biological counterpart is still expanding very quickly and transfer between both communities (ALife and genetics/bioinformatics) is recurrent due to the strong links existing between the models.

⁵The Evo-Devo community is now also moving to application domains such as computational biology, soft robotics, etc.

6 Conclusion

In this paper we have reviewed existing work on the use gene regulatory networks for computational purposes. We first introduced how genetic regulation works in living systems, followed by a discussion of existing computational models. This shows the diversity of encodings and dynamics that are currently being used; however, a rigorous comparison of models has yet to be performed. Recently, an initial study has been conducted in order to compare various encodings and dynamics [41]. Without doubt, the community would benefit from standardized benchmarks to facilitate the comparison of various models of gene regulation, as well as other optimizable models, such as artificial neural networks, genetic programming, hand-written scripts, etc.. The increasing frequency of competitions organized at conferences is one step in this direction, and serves as a good basis of comparison.

In our past experience of presenting artificial gene regulatory networks and applications to various real world control problem, we are often asked about the difference between artificial gene regulatory networks and artificial neural networks. While artificial gene regulatory networks and artificial neural networks can be used for similar purposes, AGRNs utilize a compact genetic representation: For instance, instead of encoding connection weights between neurons, which can mean the need to optimize millions of variables in recent deep neural networks, artificial gene regulatory networks only encode the “3-D structure” of proteins that codes for the dynamic interaction between them. This drastically reduces the number of variables to a few hundred. This has widespread consequences, especially in the age of deep learning [60]. While applications of evolutionary algorithms to DL have just started to appear [121, 101], we expect that evolving DL neural networks with AGRNs will be a major application area in the future.

For a direct comparison between AGRNs and ANNs, however, the recurrent connectivity of AGRNs allows them to be best compared to recurrent neural networks. While there is significant work to be done in relating artificial gene regulatory networks to artificial neural networks, initial steps have been taken in [145]. There, Watson et al show that evolving simple artificial gene regulatory networks is equivalent to the associative learning of weights in a Hopfield network. However, this observation has not been extended to artificial gene regulatory networks with more complex genetic representations. Also, Baran et al. recently proposed the use of AGRNs to study the evolution of social behavior and, more precisely, the underlying development of the brain's neural circuitry [8]. This opens new perspectives for studies of the connection between artificial neural networks and artificial gene regulatory networks.

Two other properties of AGRNs that are, in our opinion, particularly interesting and not yet fully used and understood are temporal dynamics and heterochrony. The first, temporal dynamics, allows a certain memory to emerge in the network: concentrations can be updated constantly, at every time step of the simulation or problem resolution, while actions are executed once in a while. This provides the network with all the history of a given state of the environment, which is naturally kept by protein concentrations and provides a memory system of the GRN. Not yet mathematically studied or fully understood, these dynamics could be beneficial for long-term decision making.

The second, heterochrony, is a crucial property of these networks. As described previously in this paper, this mechanism allows a slow modification of the network dynamics when mutation occurs. This mechanism is not yet sufficiently employed in current mutation operators of genetic algorithms. While crossover operators have been recently improved in [30], mutation is still crucial in artificial gene regulatory network optimization, since most approaches

use very high mutation rates (75%), if not exclusively mutation. Whereas the NEAT algorithm has strongly impacted the evolution of neural networks [132], improving the evolutionary algorithm is a central question in order to find the best possible network for a given problem. More work is necessary in this domain in order to generate better results with artificial gene regulatory networks.

Finally, one domain in which artificial gene regulatory networks could excel but have not been well tested is online learning. Thanks to their easy-to-modify structure based on protein affinities, slight changes of proteins tags while the agent is acting in the environment should be possible. A mechanism, comparable to back-propagation in artificial neural networks, will have to be designed in order to intelligently change these values according to the rewards obtained by the agent. The architecture of artificial gene regulatory networks should be helpful here due to the small number of parameters to modify in order change entire networks. One could easily imagine particle-swarm-optimization-like motion, in which the AGRN's proteins would move in a 3D space (for a model based on 3 tags such as Cussat-Blanc et al.'s model), attracted and repelled by other proteins based on the efficacy of the networks for a given task.

Possibilities opened by gene regulatory networks are numerous. Whereas biologists have made significant progress in understanding the inner mechanisms of gene regulation in living systems, much remains to be discovered and understood. These mechanisms produce extremely complex behaviors in living organisms, from embryogenesis to the regulation of every-day life. Computer Science and more specifically artificial intelligence will benefit from these discoveries and, with gene regulatory networks, could produce more intelligent behaviors for artificial agents in the near future.

Acknowledgements

KH thanks the NSF Idaho EPSCoR Program and the National Science Foundation under award number IIA-1301792. WB thanks the Canadian NSERC for funding under discovery grant number RGPIN 283304-2012 and 2018-05365 and Michigan State University for providing JR Koza Endowment funding.

References

- [1] Aldana, M., Balleza, E., Kauffman, S., & Resendiz, O. (2007). Robustness and evolvability in genetic regulatory networks. *Journal of Theoretical Biology*, 245(3), 433–448.
- [2] Andersson, N., Skrtic, S. M., Håkanson, R., & Ohlsson, C. (2005). A gene expression fingerprint of mouse stomach ecl cells. *Biochemical and Biophysical Research Communications*, 332(2), 404–410.
- [3] Artavanis-Tsakonas, S., Rand, M. D., & Lake, R. J. (1999). Notch signaling: cell fate control and signal integration in development. *Science*, 284(5415), 770–776.
- [4] Asr, N. R., & Majd, V. J. (2013). A New Artificial Genetic Regulatory Network Model and its Application in Two Dimensional Robot Control. *International Journal of Information and Electronics Engineering*, 3(5), 461.
- [5] Banzhaf, W. (2003). Artificial regulatory networks and genetic programming. In R. Riolo, & B. Worzel (Eds.) *Genetic Programming Theory and Practice*, (pp. 43–61). New York City, NY, USA: Springer.
- [6] Banzhaf, W. (2003). On the dynamics of an artificial regulatory network. In W. Banzhaf, T. Christaller, P. Dittrich, J. Kim, & J. Ziegler (Eds.)

- European Conference on Artificial Life*, (pp. 217–227). New York City, NY, USA: Springer.
- [7] Banzhaf, W., & Lasarczyk, C. (2005). Genetic Programming of an Algorithmic Chemistry. In U.-M. O’Reilly, T. Yu, R. Riolo, & B. Worzel (Eds.) *Genetic Programming Theory and Practice II*, (pp. 175–190). New York City, NY, USA: Springer.
- [8] Baran, N. M., McGrath, P. T., & Streelman, J. T. (2017). Applying gene regulatory network logic to the evolution of social behavior. *Proceedings of the National Academy of Sciences*, *114*, 5886–5893.
- [9] Bartel, D. P. (2004). MicroRNAs: Genomics, Biogenesis, Mechanism, and Function. *Cell*, *116*, 281–297.
- [10] Barto, A. G., Sutton, R. S., & Anderson, C. W. (1983). Neuronlike adaptive elements that can solve difficult learning control problems. *IEEE Transactions on Systems, Man, and Cybernetics*, *5*, 834–846.
- [11] Bentley, K., Harrington, K., & Regan, E. R. (2014). Can Active Perception Generate Bistability? Heterogeneous Collective Dynamics and Vascular Patterning. In H. Sayama, J. Rieffel, S. Risi, R. Doursat, & H. Lipson (Eds.) *Proceedings of ALIFE XIV: The Fourteenth International Conference on the Synthesis and Simulation of Living Systems*, (pp. 328–335). Cambridge, MA, USA: MIT Press.
- [12] Bentley, K., Mariggi, G., Gerhardt, H., & Bates, P. A. (2009). Tipping the Balance: Robustness of Tip Cell Selection, Migration and Fusion in Angiogenesis. *PLOS Computational Biology*, *5*(10), e1000549.
- [13] Bentley, P. J. (2004). Evolving beyond perfection: An investigation of

the effects of long-term evolution on fractal gene regulatory networks. *Biosystems*, 76(1), 291–301.

- [14] Berg, O. G., & von Hippel, P. H. (1988). Selection of dna binding sites by regulatory proteins: Ii. the binding specificity of cyclic amp receptor protein to recognition sites. *Journal of Molecular Biology*, 200(4), 709–723.
- [15] Bongard, J., & Pfeifer, R. (2003). Evolving complete agents using artificial ontogeny. In H. F., & R. Pfeier (Eds.) *Morpho-functional machines: The new species*, (pp. 237–258). New York City, NY, USA: Springer.
- [16] Bower, J. M., & Bolouri, H. (2001). *Computational modeling of genetic and biochemical networks*. Cambridge, MA, USA: MIT Press.
- [17] Brookfield, J. F. Y. (2005). The ecology of the genome-mobile DNA elements and their hosts. *Nature Reviews Genetics*, 6, 128–136.
- [18] Byrne, J., Nicolau, M., Brabazon, A., & O’Neill, M. (2014). An examination of synchronisation in artificial gene regulatory networks. In *IEEE Congress on Evolutionary Computation (CEC)*, (pp. 2764–2769). Piscataway, NJ, USA: IEEE.
- [19] Chaouiya, C. (2007). Petri net modelling of biological networks. *Briefings in Bioinformatics*, 8(4), 210–219.
- [20] Chavoya, A., & Duthen, Y. (2008). A cell pattern generation model based on an extended artificial regulatory network. *BioSystems*, 94(1-2), 95–101.
- [21] Chen, K., & Rajewsky, N. (2007). The evolution of gene regulation by transcription factors and microRNAs. *Nature Reviews Genetics*, 8(2), 93–103.

- [22] Cheong, R., Rhee, A., Wang, C. J., Nemenman, I., & Levchenko, A. (2011). Information Transduction Capacity of Noisy Biochemical Signaling Networks. *Science*, *334*(6054), 354–358.
- [23] Chung, H., Bogwitz, M. R., McCart, C., Andrianopoulos, A., French Constant, R. H., Batterham, P., & Daborn, P. J. (2007). Cis-regulatory elements in the accord retrotransposon result in tissue-specific expression of the drosophila melanogaster insecticide resistance gene *Cyp6g1*. *Genetics*, *175*, 1071–1077.
- [24] Church, G. M., Elowitz, M. B., Smolke, C. D., Voigt, C. A., & Weiss, R. (2014). Realizing the potential of synthetic biology. *Nature Reviews Molecular Cell Biology*, *15*(4), 289.
- [25] Conway, J. (1970). The game of life. *Scientific American*, *223*(4), 4.
- [26] Crick, F. (1958). On protein synthesis. In F. Sanders (Ed.) *Symposia of the Society for Experimental Biology, Number XII: The Biological Replication of Macromolecules*, (pp. 138–163). Cambridge University Press.
- [27] Crick, F. (1970). Central dogma of molecular biology. *Nature*, *227*, 561–563.
- [28] Crombach, A., & Hogeweg, P. (2008). Evolution of evolvability in gene regulatory networks. *PLoS Computational Biology*, *4*(7), e1000112.
- [29] Cussat-Blanc, S., Bredeche, N., Luga, H., Duthen, Y., & Schoenauer, M. (2011). Artificial gene regulatory network and spatial computation: A case study. In T. Lenaerts, M. Giacobini, H. Bersini, P. Bourguine, M. Dorigo, & R. Doursat (Eds.) *European Conference on Artificial Life*. Cambridge, MA, USA: MIT Press.

- [30] Cussat-Blanc, S., & Harrington, K. (2015). Genetically-regulated neuro-modulation facilitates multi-task reinforcement learning. In S. Silva (Ed.) *Proceedings of the 2015 Annual Conference on Genetic and Evolutionary Computation*, (pp. 551–558). New York City, NY, USA: ACM.
- [31] Cussat-Blanc, S., Luga, H., & Duthen, Y. (2008). From single cell to simple creature morphology and metabolism. In S. Bullock, J. Noble, R. Watson, & M. Bedau (Eds.) *Artificial Life XI: Proceedings of the Eleventh International Conference on the Simulation and Synthesis of Living Systems*, (pp. 134–141). Cambridge, MA, USA: MIT Press.
- [32] Cussat-Blanc, S., & Pollack, J. (2012). Using pictures to visualize the complexity of gene regulatory networks. In C. Ofria, et al. (Eds.) *The 13th International Conference on the Simulation and Synthesis of Living Systems*, (pp. 491–498). Cambridge, MA, USA: MIT Press.
- [33] Davidson, E. H. (2006). *The Regulatory Genome: Gene Regulatory Networks in Development and Evolution*. Academic Press.
- [34] Dayan, P., Abbott, L., et al. (2003). Theoretical neuroscience: computational and mathematical modeling of neural systems. *Journal of Cognitive Neuroscience*, 15(1), 154–155.
- [35] de Garis, H. (1999). Artificial embryology and cellular differentiation. In P. Bentley (Ed.) *Evolutionary Design by Computers*, (pp. 281–295). Morgan Kaufmann, San Francisco.
- [36] De Jong, H. (2002). Modeling and simulation of genetic regulatory systems: a literature review. *Journal of Computational Biology*, 9, 67–103.
- [37] Dellaert, F., & Beer, R. (1994). Toward an evolvable model of development for autonomous agent synthesis. In R. Brooks, & P. Maes (Eds.)

Artificial Life IV: Proceedings of the Fourth International Workshop on the Synthesis and Simulation of Living Systems. Cambridge, MA: MIT Press.

- [38] Deritei, D., Aird, W. C., Ercsey-Ravasz, M., & Regan, E. R. (2016). Principles of dynamical modularity in biological regulatory networks. *Scientific Reports*, 6, 21957.
- [39] Disset, J., Cussat-Blanc, S., & Duthen, Y. (2014). Self-organization of symbiotic multicellular structures. In H. Sayama, J. Reiffel, S. Risi, R. Doursat, & H. Lipson (Eds.) *Artificial Life XIV: Proceedings of the Fourteenth International Conference on the Synthesis and Simulation of Living Systems*, (pp. pp-541). Cambridge, MA, USA: MIT Press.
- [40] Disset, J., Cussat-Blanc, S., & Duthen, Y. (2016). Evolved developmental strategies of artificial multicellular organisms. In C. Gershenson, T. Froese, et al. (Eds.) *Artificial Life XV: Proceedings of Fifteenth International Symposium on the Synthesis and Simulation of Living Systems*, (pp. pp-1). Cambridge, MA, USA: MIT Press.
- [41] Disset, J., Wilson, D. G., Cussat-Blanc, S., Sanchez, S., Luga, H., & Duthen, Y. (2017). A comparison of genetic regulatory network dynamics and encoding. In G. Ochoa (Ed.) *Proceedings of the Genetic and Evolutionary Computation Conference*, (pp. 91-98). New York City, NY, USA: ACM.
- [42] Doursat, R. (2008). Organically grown architectures: Creating decentralized, autonomous systems by embryomorphic engineering. In R. Wuertz (Ed.) *Organic Computing*, (pp. 167-200). New York City, NY, USA: Springer.

- [43] Doursat, R. (2009). Facilitating evolutionary innovation by developmental modularity and variability. In F. Rothlauf, et al. (Eds.) *Proceedings of the 11th Annual Conference on Genetic and Evolutionary Computation*, (pp. 683–690). New York City, NY, USA: ACM.
- [44] Doursat, R., & Sánchez, C. (2014). Growing fine-grained multicellular robots. *Soft Robotics*, 1(2), 110–121.
- [45] Draghi, J., & Wagner, G. P. (2009). The evolutionary dynamics of evolvability in a gene network model. *Journal of Evolutionary Biology*, 22(3), 599–611.
- [46] Dueck, H., et al. (2015). Deep sequencing reveals cell-type-specific patterns of single-cell transcriptome variation. *Genome Biology*, 16(1), 122.
- [47] Dynlacht, B. D. (1997). Regulation of transcription by proteins that control the cell cycle. *Nature*, 389(6647), 149–152.
- [48] Eggenberger, P. (1997). Evolving morphologies of simulated 3d organisms based on differential gene expression. In P. Husbands, & I. Harvey (Eds.) *Fourth European Conference on Artificial Life*, (pp. 205–213). Cambridge, MA, USA: MIT Press.
- [49] Eggenberger Hotz, P. (2004). Asymmetric cell division and its integration with other developmental processes for artificial evolutionary systems. In J. Pollack, et al. (Eds.) *Artificial Life IX: Proceedings of the Ninth International Conference on the Simulation and Synthesis of Living Systems*, (pp. 387–392).
- [50] Elowitz, M. B., Levine, A. J., Siggia, E. D., & Swain, P. S. (2002). Stochastic gene expression in a single cell. *Science*, 297(5584), 1183–1186.

- [51] Feschotte, C. (2008). Transposable elements and the evolution of regulatory networks. *Nature Reviews Genetics*, 9(5), 397–405.
- [52] Flann, N., Hu, J., Bansal, M., Patel, V., & Podgorski, G. (2005). Biological development of cell patterns: characterizing the space of cell chemistry genetic regulatory networks. *Lecture Notes in Computer Science*, 3630, 57.
- [53] Fleischer, K., & Barr, A. (1992). A Simulation Testbed for the Study of Multicellular Development: The Multiple Mechanisms of Morphogenesis. In C. Langton (Ed.) *Artificial Life III: Proceedings of the Workshop on Artificial Life*, (p. 389). Boston, MA, USA: Addison-Wesley Longman.
- [54] Fox, R. M., Von Stetina, S. E., Barlow, S. J., Shaffer, C., Olszewski, K. L., Moore, J. H., Dupuy, D., Vidal, M., & Miller, D. M. (2005). A gene expression fingerprint of *c. elegans* embryonic motor neurons. *BMC Genomics*, 6(1), 42.
- [55] Gao, X. J., & Elowitz, M. B. (2016). Synthetic biology: Precision timing in a cell. *Nature*, 538(7626), 462–463.
- [56] Gaydos, L. J., Wang, W., & Strome, S. (2014). H3K27me and PRC2 transmit a memory of repression across generations and during development. *Science*, 345(6203), 1515–1518.
- [57] Gerhart, J., & Kirschner, M. (2006). *The Plausibility of Life*. Yale University Press.
- [58] Gillespie, D. T. (1975). An exact method for numerically simulating the stochastic coalescence process in a cloud. *Journal of the Atmospheric Sciences*, 32(10), 1977–1989.

- [59] Gillespie, D. T., & Petzold, L. R. (2003). Improved leap-size selection for accelerated stochastic simulation. *The Journal of Chemical Physics*, *119*(16), 8229–8234.
- [60] Goodfellow, I., Bengio, Y., & Courville, A. (2016). *Deep Learning*. Cambridge, MA, USA: MIT Press.
- [61] Graner, F., & Glazier, J. A. (1992). Simulation of biological cell sorting using a two-dimensional extended potts model. *Physical Review Letters*, *69*(13), 2013.
- [62] Grewal, S. I., & Moazed, D. (2003). Heterochromatin and epigenetic control of gene expression. *Science*, *301*(5634), 798–802.
- [63] Harrington, K., & Magbunduku, L. (2017). Competitive dynamics in eco-evolutionary genetically-regulated swarms. In C. Knibe, et al. (Eds.) *ECAL 2017: The Fourteenth European Conference on Artificial Life*, (pp. 190–197). Cambridge, MA, USA: MIT Press.
- [64] Harrington, K. I., Awa, E., Cussat-Blanc, S., & Pollack, J. (2013). Robot coverage control by evolved neuromodulation. In P. Angelov, D. Levine, & P. Erdi (Eds.) *The 2013 International Joint Conference on Neural Networks*, (pp. 1–8). Piscataway, NJ, USA: IEEE.
- [65] Harrington, K. I. S. (2016). A circuit basis for morphogenesis. *Theoretical Computer Science*, *633*, 28–36.
- [66] Hasty, J., McMillen, D., & Collins, J. J. (2002). Engineered gene circuits. *Nature*, *420*(6912), 224–230.
- [67] Hasty, J., McMillen, D., Isaacs, F., & Collins, J. J. (2001). Computational studies of gene regulatory networks: In numero molecular biology. *Nature Reviews Genetics*, *2*(4), 268–279.

- [68] Horvitz, H., & Herskowitz, I. (1992). Mechanisms of asymmetric cell division: two Bs or not two Bs, that is the question. *Cell*, *68*(2), 237.
- [69] Hunding, A., Kauffman, S. A., & Goodwin, B. C. (1990). Drosophila segmentation: supercomputer simulation of prepatter hierarchy. *Journal of Theoretical Biology*, *145*(3), 369–384.
- [70] Huppert, S. S., Jacobsen, T. L., & Muskavitch, M. A. (1997). Feedback regulation is central to Delta-Notch signalling required for Drosophila wing vein morphogenesis. *Development*, *124*(17), 3283–3291.
- [71] Jacob, F., & Monod, J. (1961). Genetic regulatory mechanisms in the synthesis of proteins. *Journal of Molecular Biology*, *3*, 318–356.
- [72] Jaenisch, R., & Bird, A. (2003). Epigenetic regulation of gene expression: how the genome integrates intrinsic and environmental signals. *Nature Genetics*, *33*, 245–254.
- [73] Joachimczak, M., Kowaliw, T., Doursat, R., & Wróbel, B. (2013). Controlling development and chemotaxis of soft-bodied multicellular animats with the same gene regulatory network. In P. Lio, O. Miglino, G. Nicosia, S. Nolfi, & M. Pavone (Eds.) *Proceedings of the European Conference on Artificial Life*, (pp. 454–461). Cambridge, MA, USA: MIT Press.
- [74] Joachimczak, M., Suzuki, R., & Arita, T. (2014). Fine grained artificial development for body-controller coevolution of soft-bodied animats. *Artificial Life*, *14*, 239–246.
- [75] Joachimczak, M., & Wróbel, B. (2008). Evo-devo in silico: a model of a gene network regulating multicellular development in 3d space with artificial physics. In S. Bullock, J. Noble, R. Watson, & M. Bedau (Eds.) *Artificial Life XI: Proceedings of the Eleventh International Conference*

- on the Simulation and Synthesis of Living Systems*, (pp. 297–304). Cambridge, MA, USA: MIT Press.
- [76] Joachimczak, M., & Wróbel, B. (2009). Evolution of the morphology and patterning of artificial embryos: scaling the tricolour problem to the third dimension. In G. Kampis, I. Karsai, & E. Szathmáry (Eds.) *Proceedings of the European Conference on Artificial Life*, (pp. 35–43). Cambridge, MA, USA: MIT Press.
- [77] Joachimczak, M., & Wróbel, B. (2010). Evolving Gene Regulatory Networks for Real Time Control of Foraging Behaviours. In H. Fellerman, et al. (Eds.) *Artificial Life XII: Proceedings of the 12th International Conference on the Synthesis and Simulation of Living Systems*, (pp. 348–358). Cambridge, MA, USA: MIT Press.
- [78] Joachimczak, M., & Wróbel, B. (2012). Co-evolution of morphology and control of soft-bodied multicellular animats. In T. Soule, et al. (Eds.) *Proceedings of the 14th annual conference on Genetic and evolutionary computation*, (pp. 561–568). New York City, NY, USA: ACM.
- [79] Joachimczak, M., & Wróbel, B. (2012). Open ended evolution of 3d multicellular development controlled by gene regulatory networks. In C. Adami, D. M. Bryson, C. Ofri, & R. T. Pennock (Eds.) *Artificial Life XIII: Proceedings of the 13th International Conference on the Simulation and Synthesis of Living Systems*, (pp. 67–74). Cambridge, MA, USA: MIT Press.
- [80] Jones, P. A., & Takai, D. (2001). The Role of DNA Methylation in Mammalian Epigenetics. *Science*, 293(5532), 1068–1070.
- [81] Karlebach, G., & Shamir, R. (2008). Modelling and analysis of gene regulatory networks. *Nature Reviews Molecular Cell Biology*, 9(10), 770–780.

- [82] Karli, R., Chung, H.-R., Lasserre, J., Vlahoviek, K., & Vingron, M. (2010). Histone modification levels are predictive for gene expression. *Proceedings of the National Academy of Sciences*, *107*(7), 2926–2931.
- [83] Kauffman, S. (1969). Homeostasis and Differentiation in Random Genetic Control Networks. *Nature*, *224*(5215), 177–178.
- [84] Kauffman, S., Peterson, C., Samuelsson, B., & Troein, C. (2004). Genetic networks with canalizing Boolean rules are always stable. *Proceedings of the National Academy of Sciences*, *101*(49), 17102–17107.
- [85] Kauffman, S. A. (1969). Metabolic stability and epigenesis in randomly constructed genetic nets. *Journal of Theoretical Biology*, *22*(3), 437–467.
- [86] Khalil, A. S., & Collins, J. J. (2010). Synthetic biology: Applications come of age. *Nature Reviews Genetics*, *11*(5), 367.
- [87] Kim, J., & Eberwine, J. (2010). Rna: state memory and mediator of cellular phenotype. *Trends in Cell Biology*, *20*(6), 311–318.
- [88] King, M., & Wilson, A. (1975). Evolution at two levels in humans and chimpanzees. *Science*, *188*, 107–116.
- [89] Kitano, H. (2002). Systems biology: A brief overview. *Science*, *295*(5560), 1662–1664.
- [90] Knabe, J., Schilstra, M., & Nehaniv, C. (2008). Evolution and morphogenesis of differentiated multicellular organisms: autonomously generated diffusion gradients for positional information. In S. Bullock, J. Noble, R. Watson, & M. Bedau (Eds.) *Artificial Life XI: Proceedings of the Eleventh International Conference on the Simulation and Synthesis of Living Systems*. Cambridge, MA, USA: MIT Press.

- [91] Krohn, J. P. (2013). *A Gene Regulatory Network Model for Control*. Ph.D. thesis, University College London.
- [92] Kumar, S., & Bentley, P. (2003). Biologically inspired evolutionary development. In A. Tyrrell, P. Haddow, & J. Torresen (Eds.) *Proceedings of the 5th international conference on Evolvable systems: from biology to hardware*, (pp. 57–68). New York City, NY, USA: Springer.
- [93] Kuo, P. D., Leier, A., & Banzhaf, W. (2004). Evolving dynamics in an artificial regulatory network model. In X. Yao, et al. (Eds.) *International Conference on Parallel Problem Solving from Nature VIII*, (pp. 571–580). New York City, NY, USA: Springer.
- [94] Kur, E., Kim, J., Tata, A., Comin, C. H., Harrington, K. I., da F Costa, L., Bentley, K., & Gu, C. (2016). Temporal modulation of collective cell behavior controls vascular network topology. *eLife*, 5, e13212.
- [95] Lähdesmäki, H., Shmulevich, I., & Yli-Harja, O. (2003). On learning gene regulatory networks under the Boolean network model. *Machine Learning*, 52(1-2), 147–167.
- [96] Leier, A., Kuo, P. D., Banzhaf, W., & Burrage, K. (2006). Evolving noisy oscillatory dynamics in genetic regulatory networks. In P. Collet, et al. (Eds.) *European Conference on Genetic Programming EuroGP-2006*, (pp. 290–299). New York City, NY, USA: Springer.
- [97] Levskaya, A., Chevalier, A. A., Tabor, J. J., Simpson, Z. B., & others (2005). Engineering *Escherichia coli* to see light. *Nature*, 438(7067), 441.
- [98] Lewis, J. (1996). Neurogenic genes and vertebrate neurogenesis. *Current Opinion in Neurobiology*, 6(1), 3–10.

- [99] Liao, B.-K., Jrg, D. J., & Oates, A. C. (2016). Faster embryonic segmentation through elevated Delta-Notch signalling. *Nature Communications*, 7, 11861.
- [100] Lipson, H., Pollack, J. B., & Suh, N. P. (2002). On the origin of modular variation. *Evolution*, 56(8), 1549–1556.
- [101] Liu, H., Simonyan, K., Vinyals, O., Fernando, C., & Kavukcuoglu, K. (2017). Hierarchical representations for efficient architecture search. *ArXiv*, 171100436v1, 1–13.
- [102] Loaiza, A., Porras, O. H., & Barros, L. F. (2003). Glutamate triggers rapid glucose transport stimulation in astrocytes as evidenced by real-time confocal microscopy. *Journal of Neuroscience*, 23(19), 7337–7342.
- [103] Lones, M. A. (2016). Computing with artificial gene regulatory networks. In H. Iba, & N. Noman (Eds.) *Evolutionary Computation in Gene Regulatory Network Research*, (pp. 398–424). John Wiley & Sons.
- [104] Lopes, F. J., Vieira, F. M., Holloway, D. M., Bisch, P. M., & Spirov, A. V. (2008). Spatial bistability generates hunchback expression sharpness in the drosophila embryo. *PLoS Computational Biology*, 4(9).
- [105] Lopes, R. L., & Costa, E. (2012). The regulatory network computational device. *Genetic Programming and Evolvable Machines*, 13(3), 339–375.
- [106] Lopes, R. M. L. (2015). *A Computational Model Inspired by Gene Regulatory Networks*. Ph.D. thesis.
- [107] Lowell, J., & Pollack, J. (2016). Developmental Encodings Promote the Emergence of Hierarchical Modularity. In C. Gershenson, T. Froese, et al. (Eds.) *Artificial Life XV: The 15th International Conference on the Syn-*

thesis and Simulation of Living Systems, (pp. 344–351). Cambridge, MA, USA: MIT Press.

- [108] Matsuno, H., Doi, A., Nagasaki, M., & Miyano, S. (2000). Hybrid Petri net representation of gene regulatory network. In *Pacific Symposium on Biocomputing*, vol. 5, (p. 87). Singapore: World Scientific Press Singapore.
- [109] Meinhardt, H. (2009, 4th edition). *The Algorithmic Beauty of Sea Shells*. New York City, NY, USA: Springer.
- [110] Mestl, T., Plahte, E., & Omholt, S. W. (1995). A mathematical framework for describing and analysing gene regulatory networks. *Journal of Theoretical Biology*, 176(2), 291–300.
- [111] Milo, R., Shen-Orr, S., Itzkovitz, S., Kashtan, N., Chklovskii, D., & Alon, U. (2002). Network motifs: simple building blocks of complex networks. *Science*, 298(5594), 824–827.
- [112] Nicolau, M., O’Neill, M., & Brabazon, A. (2014). Dynamic Index Trading Using a Gene Regulatory Network Model. In A. I. Esparcia-Alcazar, & A. M. Mora (Eds.) *European Conference on the Applications of Evolutionary Computation*, (pp. 251–263). New York City, NY, USA: Springer.
- [113] Nicolau, M., Schoenauer, M., & Banzhaf, W. (2010). Evolving genes to balance a pole. In A. Esparcia-Alcazar, et al. (Eds.) *European Conference on Genetic Programming EuroGP 2010*, (pp. 196–207). New York City, NY, USA: Springer.
- [114] Ochoa-Espinosa, A., Yucel, G., Kaplan, L., Pare, A., Pura, N., Oberstein, A., Papatsenko, D., & Small, S. (2005). The role of binding site cluster strength in Bicoid-dependent patterning in *Drosophila*. *Proceedings of the National Academy of Sciences*, 102(14), 4960–4965.

- [115] Pedraza, J. M., & van Oudenaarden, A. (2005). Noise propagation in gene networks. *Science*, *307*(5717), 1965–1969.
- [116] Rao, C. V., Wolf, D. M., & Arkin, A. P. (2002). Control, exploitation and tolerance of intracellular noise. *Nature*, *420*(6912), 231–237.
- [117] Reil, T. (1999). Dynamics of gene expression in an artificial genome implications for biological and artificial ontogeny. In D. Floreano, J.-D. Nicoud, & F. Mondada (Eds.) *European Conference on Artificial Life*, (pp. 457–466). New York City, NY, USA: Springer.
- [118] Reisig, W. (2012). *Petri Nets: An Introduction*, vol. 4. Springer Science & Business Media.
- [119] Rohlf, T., & Winkler, C. R. (2009). Emergent network structure, evolvable robustness, and nonlinear effects of point mutations in an artificial genome model. *Advances in Complex Systems*, *12*, 293–310.
- [120] Ryan, K. M., Phillips, A. C., & Vousden, K. H. (2001). Regulation and function of the p53 tumor suppressor protein. *Current Opinion in Cell Biology*, *13*, 332–337.
- [121] Salismans, T., Ho, J., Chen, X., Sidor, S., & Sutskever, I. (2017). Evolution strategies as a scalable alternative to reinforcement learning. *ArXiv*, *170303864v2*, 1–13.
- [122] Samoilov, M. S., Price, G., & Arkin, A. P. (2006). From fluctuations to phenotypes: the physiology of noise. *Science STKE*, *2006*(366), re17–re17.
- [123] Sanchez, A., & Golding, I. (2013). Genetic determinants and cellular constraints in noisy gene expression. *Science*, *342*(6163), 1188–1193.

- [124] Sánchez, Á., & Kondev, J. (2008). Transcriptional control of noise in gene expression. *Proceedings of the National Academy of Sciences*, 105(13), 5081–5086.
- [125] Sanchez, S., & Cussat-Blanc, S. (2014). Gene regulated car driving: using a gene regulatory network to drive a virtual car. *Genetic Programming and Evolvable Machines*, 15(4), 477–511.
- [126] Schramm, L., Jin, Y., & Sendhoff, B. (2009). Emerged coupling of motor control and morphological development in evolution of multi-cellular animats. In G. Kampis, I. Karsai, & E. Szathmáry (Eds.) *European Conference on Artificial Life*, (pp. 27–34). Cambridge, MA, USA: MIT Press.
- [127] Schramm, L., Jin, Y., & Sendhoff, B. (2012). Redundancy in the evolution of artificial gene regulatory networks for morphological development. In Y. Jin, et al. (Eds.) *IEEE Symposium on Computational Intelligence in Bioinformatics and Computational Biology*. Piscataway, NJ, USA: IEEE.
- [128] Schroedinger, E. (1944). *What is Life?*. Cambridge University Press.
- [129] Segal, E., Raveh-Sadka, T., Schroeder, M., Unnerstall, U., & Gaul, U. (2008). Predicting expression patterns from regulatory sequence in *Drosophila* segmentation. *Nature*, 451(7178), 535–540.
- [130] Shetty, R. P., Endy, D., & Knight, T. F. (2008). Engineering BioBrick vectors from BioBrick parts. *Journal of Biological Engineering*, 2(1), 5.
- [131] Shmulevich, I., Dougherty, E. R., & Zhang, W. (2002). From Boolean to probabilistic Boolean networks as models of genetic regulatory networks. *Proceedings of the IEEE*, 90(11), 1778–1792.
- [132] Stanley, K. (2004). *Efficient evolution of neural networks through complexity*. Ph.D. thesis, The University of Texas at Austin.

- [133] Stewart, F., Taylor, T., & Konidaris, G. (2005). Metamorph: Experimenting with genetic regulatory networks for artificial development. In M. Capcarrere, A. Freitas, P. Bentley, C. Johnson, & J. Timmis (Eds.) *European Conference in Artificial Life*, (pp. 108–117). New York City, NY, USA: Springer.
- [134] Tabor, J. J., Salis, H. M., Simpson, Z. B., Chevalier, A. A., Levskaya, A., Marcotte, E. M., Voigt, C. A., & Ellington, A. D. (2009). A synthetic genetic edge detection program. *Cell*, *137*(7), 1272–1281.
- [135] Tkačik, G., Callan, C. G., & Bialek, W. (2008). Information flow and optimization in transcriptional regulation. *Proceedings of the National Academy of Sciences*, *105*(34), 12265–12270.
- [136] Trapnell, C. (2015). Defining cell types and states with single-cell genomics. *Genome Research*, *25*(10), 1491–1498.
- [137] Trefzer, M. A., Kuyucu, T., Miller, J. F., & Tyrrell, A. M. (2010). Evolution and analysis of a robot controller based on a gene regulatory network. In G. Tempesti, A. M. Tyrrell, & J. F. Miller (Eds.) *International Conference on Evolvable Systems*, (pp. 61–72). New York City, NY, USA: Springer.
- [138] Turing, A. (1952). The Chemical Basis of Morphogenesis. *Philosophical Transactions of the Royal Society of London. Series B, Biological Sciences*, *237*(641), 37–72.
- [139] Turner, A. P., Caves, L. S. D., Stepney, S., Tyrrell, A. M., & Lones, M. A. (2017). Artificial Epigenetic Networks: Automatic Decomposition of Dynamical Control Tasks Using Topological Self-Modification. *IEEE Transactions on Neural Networks and Learning Systems*, *28*, 218–230.

- [140] Tyson, J. J., Chen, K., & Novak, B. (2001). Network dynamics and cell physiology. *Nature Reviews Molecular Cell Biology*, 2(12), 908–916.
- [141] Venkatraman, L., Regan, E. R., & Bentley, K. (2016). Time to Decide? Dynamical Analysis Predicts Partial Tip/Stalk Patterning States Arise during Angiogenesis. *PLOS ONE*, 11(11), e0166489.
- [142] Villefranc, J. A., Nicoli, S., Bentley, K., Jeltsch, M., Zarkada, G., Moore, J. C., Gerhardt, H., Alitalo, K., & Lawson, N. D. (2013). A truncation allele in vascular endothelial growth factor c reveals distinct modes of signaling during lymphatic and vascular development. *Development*, 140(7), 1497–1506.
- [143] Von Neumann, J., & Burks, A. (1966). Theory of Self-Reproducing Automata.
- [144] Waddington, C. H. (2014). *The strategy of the genes*, vol. 20. Routledge.
- [145] Watson, R. A., Wagner, G. P., Pavlicev, M., Weinreich, D. M., & Mills, R. (2014). The Evolution of Phenotypic Correlations and ‘Developmental Memory’. *Evolution*, 68(4), 1124–1138.
- [146] Whitley, D., Dominic, S., Das, R., & Anderson, C. W. (1993). Genetic reinforcement learning for neurocontrol problems. In *Genetic Algorithms for Machine Learning*, (pp. 103–128). New York City, NY, USA: Springer.
- [147] Wróbel, B., Abdelmotaleb, A., & Joachimczak, M. (2012). Evolving spiking neural networks in the greans (gene regulatory evolving artificial networks) platform. In *EvoNet2012: Evolving Networks, from Systems/Synthetic Biology to Computational Neuroscience Workshop at Artificial Life XIII*, (pp. 19–22).

- [148] Wróbel, B., & Joachimczak, M. (2014). Using the genetic regulatory evolving artificial networks (greans) platform for signal processing, animat control, and artificial multicellular development. In *Growing Adaptive Machines*, (pp. 187–200). New York City, NY, USA: Springer.
- [149] Zahadat, P., Christensen, D., Katebi, S., & Stoy, K. (2013). Sensor-coupled fractal gene regulatory networks for locomotion control of a modular snake robot. In A. Martinoli, F. Mondada, N. Correll, G. Mermoud, M. Egerstedt, M. Hsieh, L. Parker, & K. Sty (Eds.) *Distributed Autonomous Robotic Systems*, (pp. 517–530). New York City, NY, USA: Springer.
- [150] Zhang, L., Radtke, K., Zheng, L., Cai, A. Q., Schilling, T. F., & Nie, Q. (2012). Noise drives sharpening of gene expression boundaries in the zebrafish hindbrain. *Molecular Systems Biology*, 8(1), 613.
- [151] Zhou, S. (2016). Synthetic biology: Bacteria synchronized for drug delivery. *Nature*, 536(7614), 33–34.

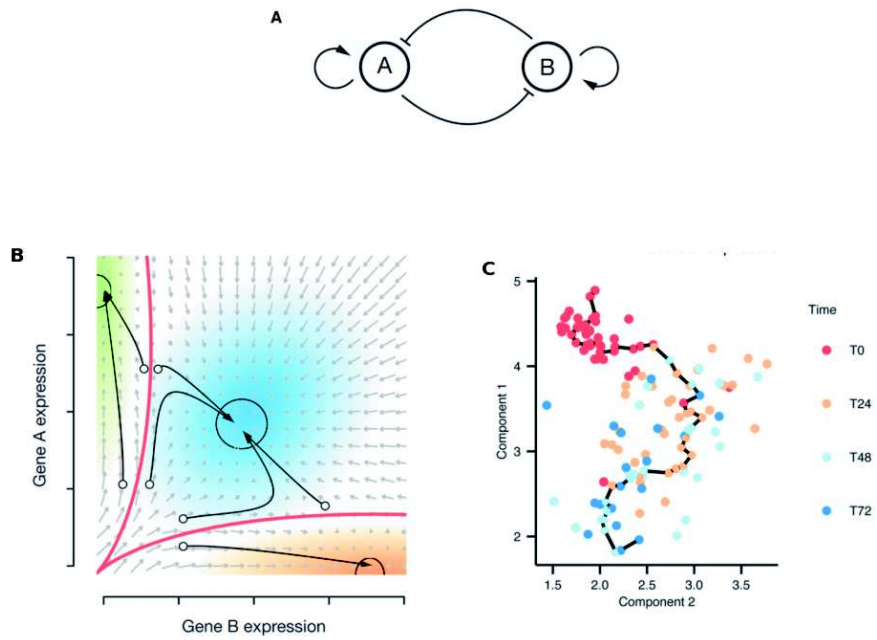


Figure 1: The trajectory of a cell, after [136]. A: Idealized regulatory network with two genes inhibiting each other. B: Three resulting distinct stable states (attractors) with their attractor basins indicated by arrows. C: Gene expression levels of the components over time can be considered as trajectories through expression space. Time quantified in arbitrary units and indicated in colors.

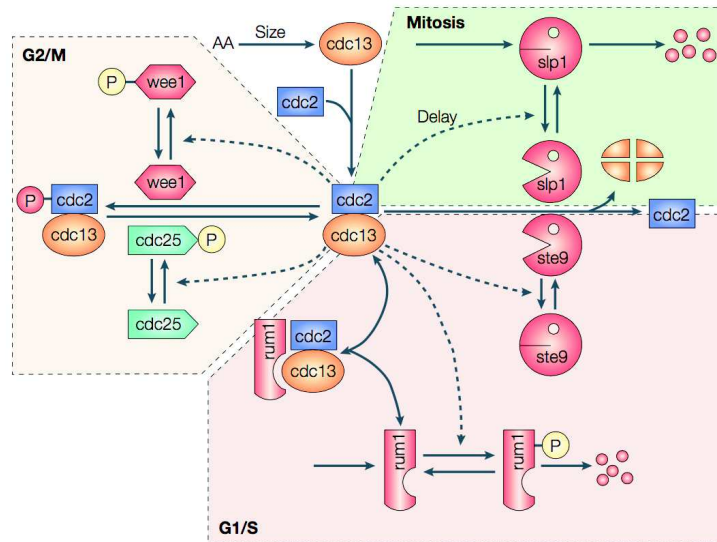


Figure 2: Cell cycle network of fission yeast from [140].

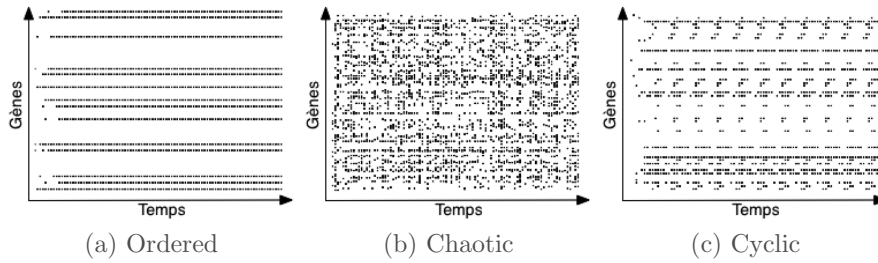


Figure 3: Graphical representation of gene activation with Reil's artificial regulatory network. Each line represents one gene activation level: Dot means that the gene is activated; white space means it is disabled. Image from [117].

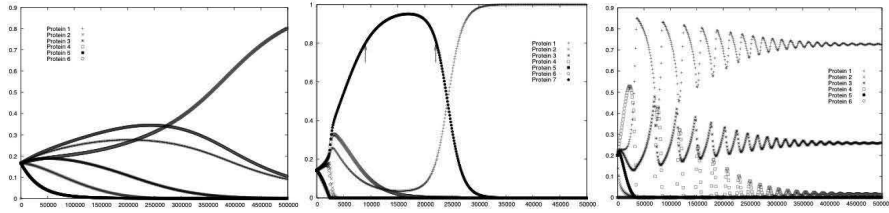


Figure 4: Examples of protein concentration dynamics obtained with the artificial gene regulatory network of [5].

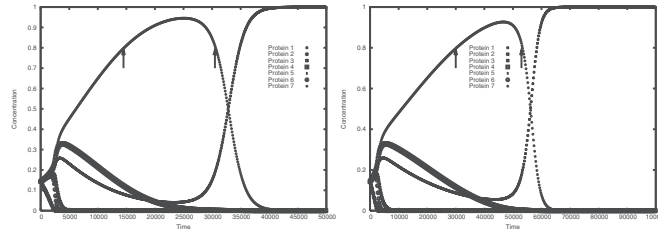


Figure 5: Example of heterochronic control in gene regulatory networks: by mutating one bit of a protein, the regulation dynamics only slightly changed.

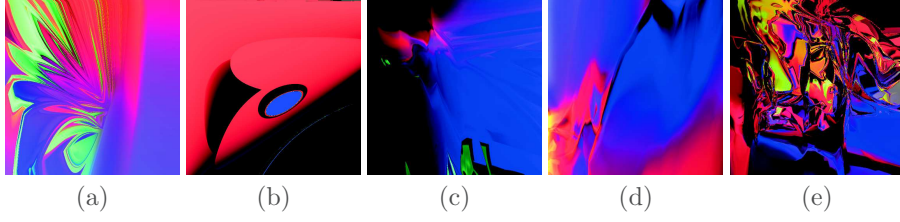


Figure 6: Examples of pictures generated with a gene regulatory network. Image from [32].

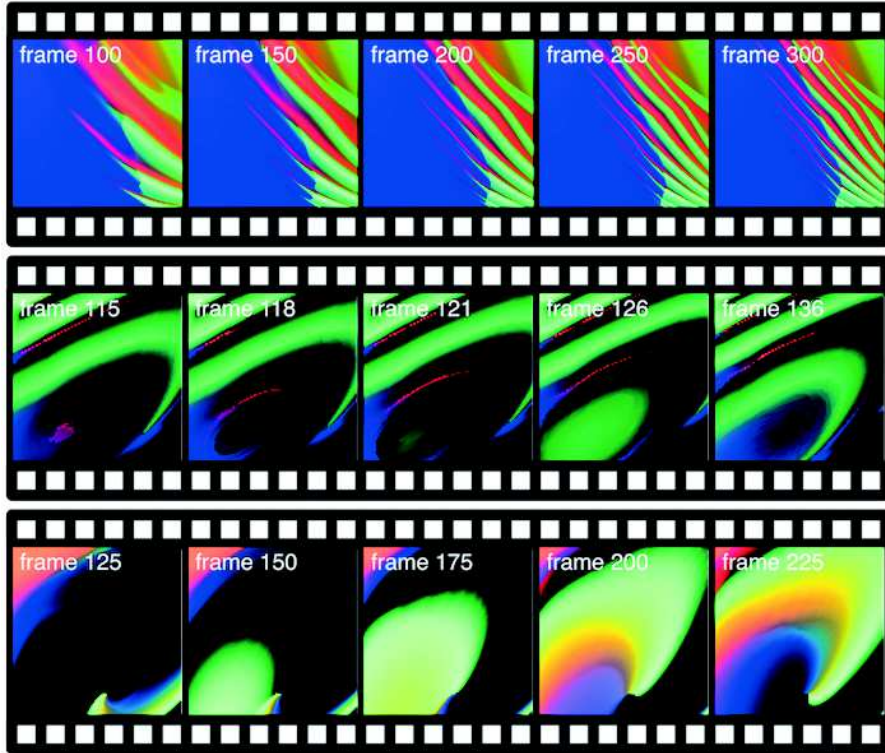


Figure 7: Examples of videos generated with a gene regulatory network.

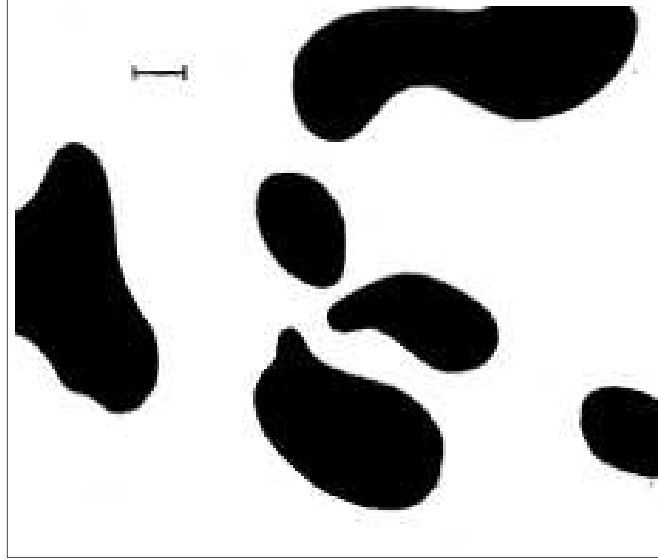


Figure 8: Example of a dappled system obtained with Turing's reaction/diffusion system. Image from [138]

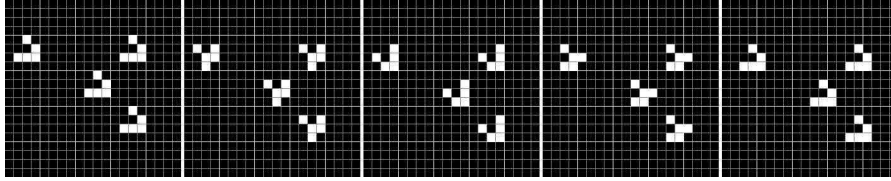


Figure 9: Example of shape produced by the Conway's game of life. Shown here is a glider, able to move in its environment across the grid, time step after time step.

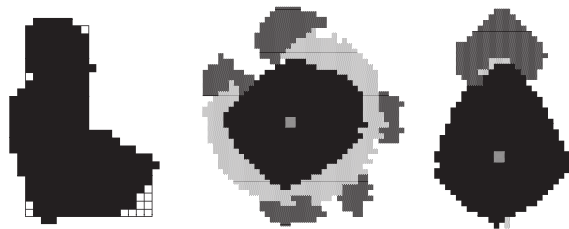


Figure 10: Examples of shapes produced with cellular automata.
Image from [35]

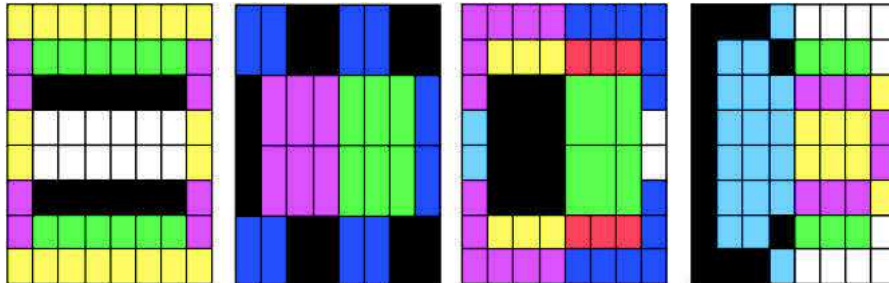


Figure 11: Illustration of Dellaert's developmental model. A random boolean network was used as an artificial gene regulatory network in order to produce user-defined shapes and cell differentiations (colors). Image from [37]

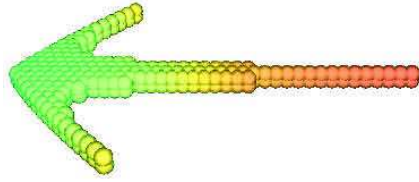


Figure 12: Eggenberger-Hotz's 'T' creature, able to move in the environment by modifying its morphology, induced by the artificial gene regulatory network. Image from [49].

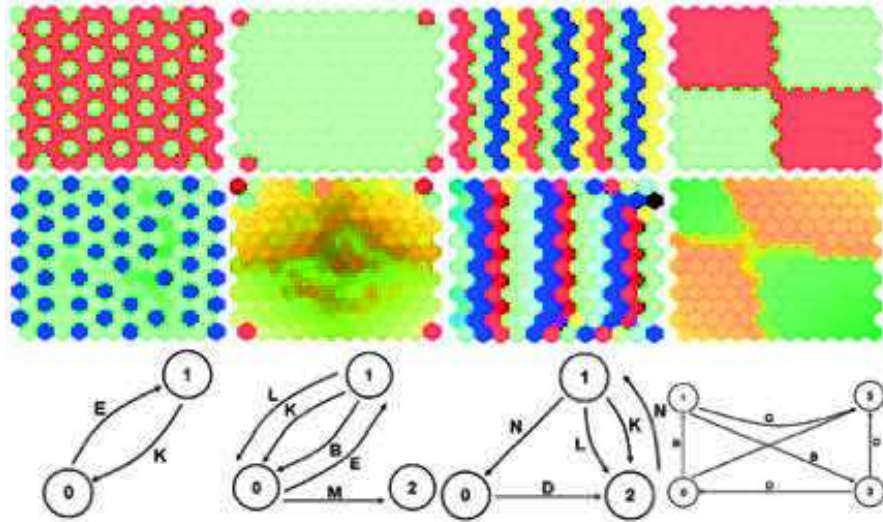


Figure 13: Examples of shapes produced by Flann's regulation network. The first line of images shows desired patterns, the second line shows the best obtained patterns after genetic evolution. The lower half shows the corresponding regulation networks. Images from [52].

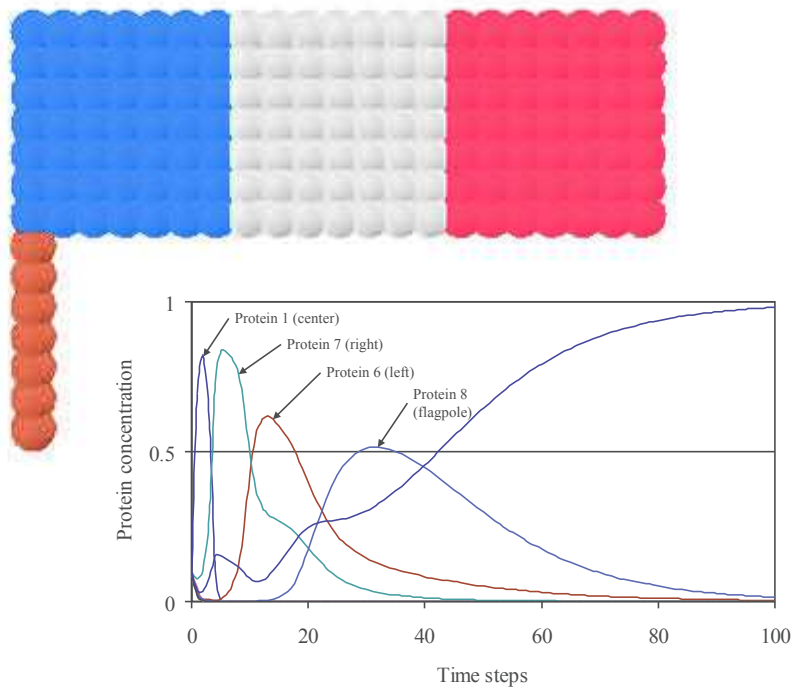


Figure 14: Chavoya's French flag and its protein concentration curves. This problem puts to the test cell differentiation capacities of developmental models. Here, differentiation is indicated by color shifts. Image from [20]

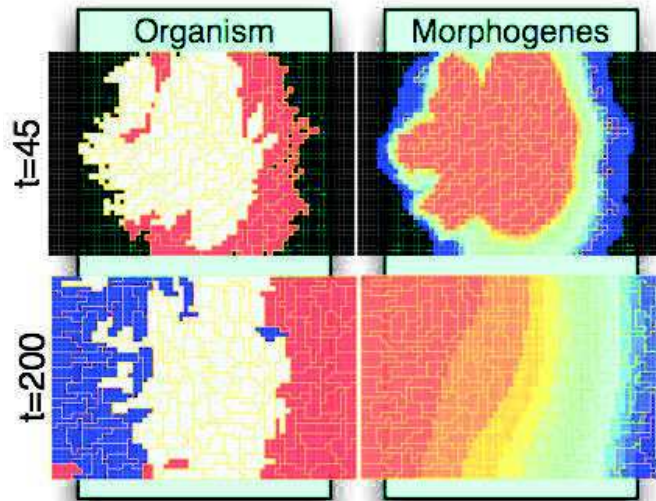


Figure 15: Example of French flag growth with Knabe's model. Top: Organism development status can be observed at simulation step 45 with this organism itself (on the left) and the morphogen gradient produced by the organism (on the right). Bottom: Final organism, at the end of its growth (simulation step 200). Various cell shapes can be observed and cells are correctly differentiated to produce a pattern close to the expected one. Images from [90].

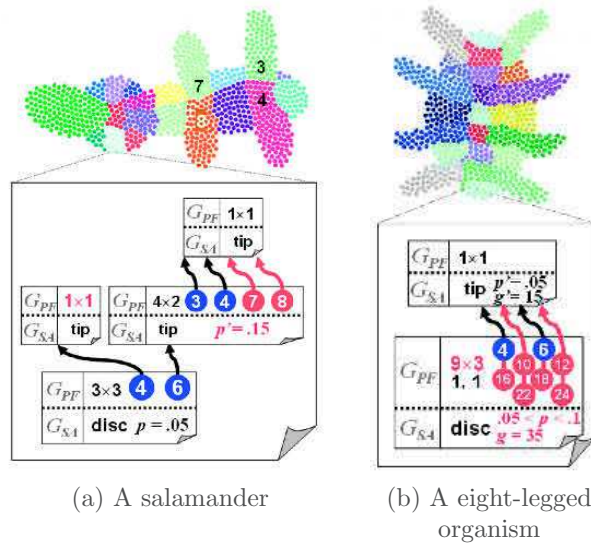


Figure 16: Developed shapes and an overview of corresponding artificial gene regulatory network of Doursat's developmental model. Images from [42].

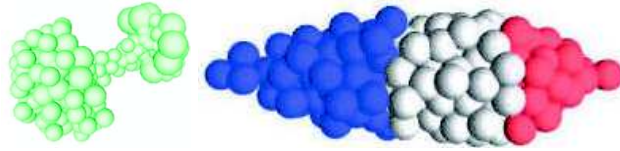


Figure 17: Example of organisms produced with Joachimczak's model: On the left, a dumbbell; on the right, a 3-D French flag. Images from [75, 76].

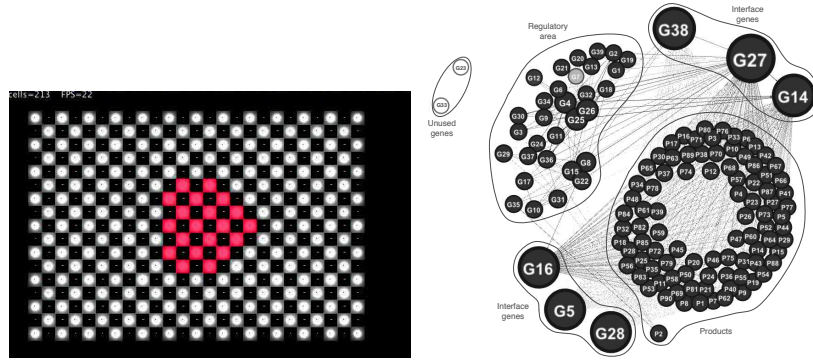


Figure 18: Multicellular organism with metabolism growing in a chemical environment with specialization skills. On the right, the artificial gene regulatory network obtained and interaction between its genes. Images from [29].

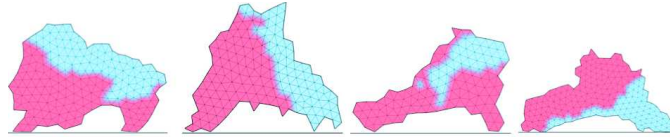


Figure 19: Animats first grown with AGRNs controlling cells in a developmental model and then moving in their simulated environment. Image from [74].

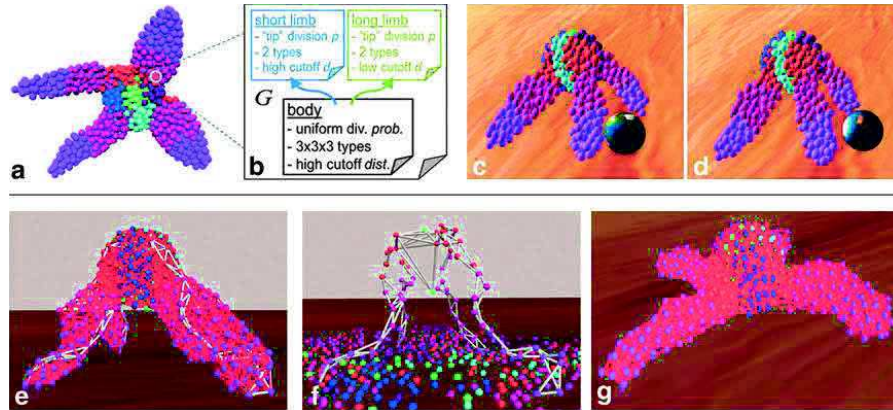


Figure 20: Example of robot "grown" using MapDevo3D. (a) The robot morphology; (b) Its modular organization; (c-g) the robot immersed in a physics engine. Image from [44].

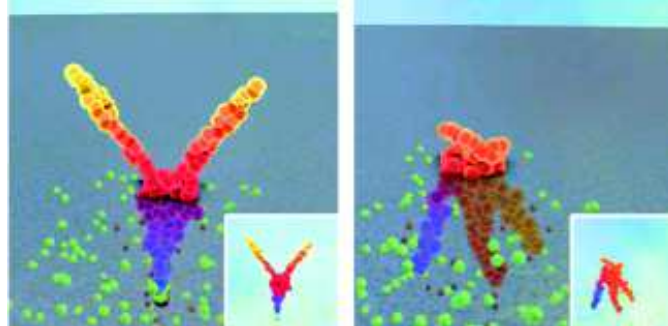


Figure 21: Example of creatures obtained with an AGRN controlling growing animats without an explicit fitness function in the evolutionary algorithm.

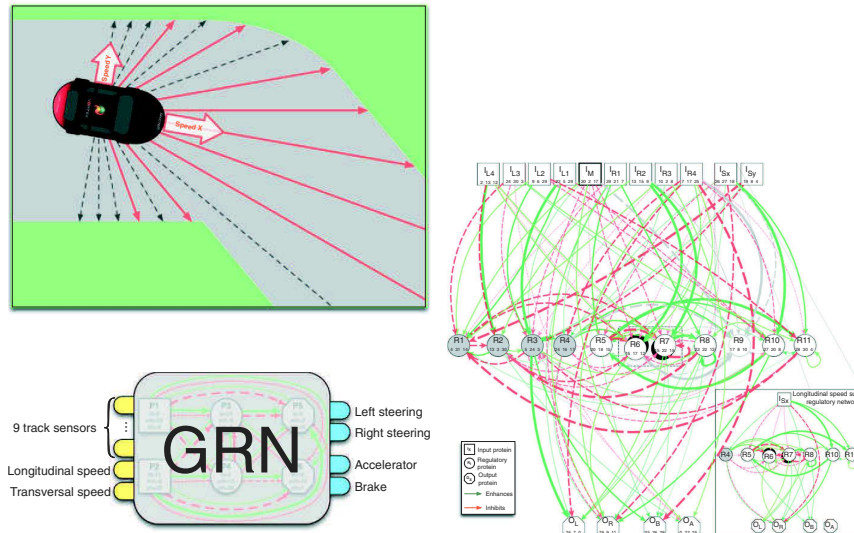


Figure 22: Gene regulated car driving. Left: Inputs of the artificial gene regulatory network from the car sensors. Right: Evolved artificial gene regulatory network. Image from [125].

Problem	AGRN Representations		
	ODEs	RBN	Bit strings
Dynamics analysis	[100] [31] [32] [127] [91] [107]	[83] [85] [110] [84] [38] [131] [1] [28] [45]	[117] [5] [6] [93] [96] [119] [18]
Morphogenesis	[138] [48] [49] [13] [52] [75] [42] [76] [43] [29] [15] [73] [74] [126] [39] [40]	[37] [20]	[90]
Agent control	[77] [91] [4] [149] [125] [73] [74] [63]		[113] [137] [112] [139]
Neuromodulation	[64] [30]		
Indirect encoding	[147] [148]		[7] [105] [139]

Table 1: Summary of references for applications of AGRNs

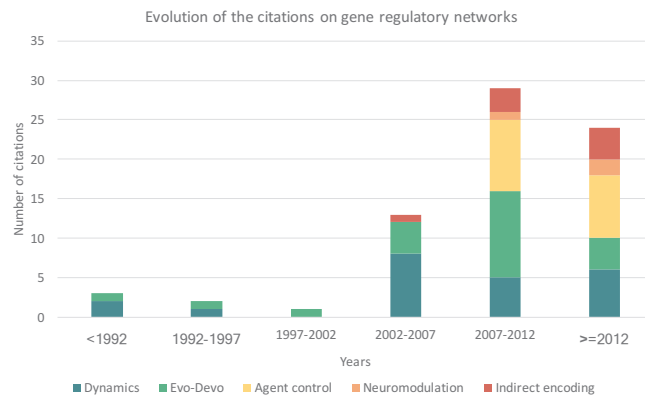


Figure 23: Partition of citations of artificial gene regulatory network approaches over the years.