



HAL
open science

Satellite cells fail to contribute to muscle repair but are functional in Pompe disease (glycogenosis type II)

Lydie Lagalice, Julien Pichon, Eliot Gougeon, Samia Soussi, Johan Deniaud, Mireille Ledevin, Virginie Maurier, Isabelle Leroux, Sylvie Durand, Carine Ciron, et al.

► To cite this version:

Lydie Lagalice, Julien Pichon, Eliot Gougeon, Samia Soussi, Johan Deniaud, et al.. Satellite cells fail to contribute to muscle repair but are functional in Pompe disease (glycogenosis type II). 6eme congrès international de Myologie, Mar 2019, Bordeaux, France. 2019. <hal-02083269>

HAL Id: hal-02083269

<https://hal.science/hal-02083269v1>

Submitted on 28 Mar 2019

HAL is a multi-disciplinary open access archive for the deposit and dissemination of scientific research documents, whether they are published or not. The documents may come from teaching and research institutions in France or abroad, or from public or private research centers.

L'archive ouverte pluridisciplinaire **HAL**, est destinée au dépôt et à la diffusion de documents scientifiques de niveau recherche, publiés ou non, émanant des établissements d'enseignement et de recherche français ou étrangers, des laboratoires publics ou privés.



HAL Authorization

Satellite cells fail to contribute to muscle repair but are functional in Pompe disease (glycogenosis type II)

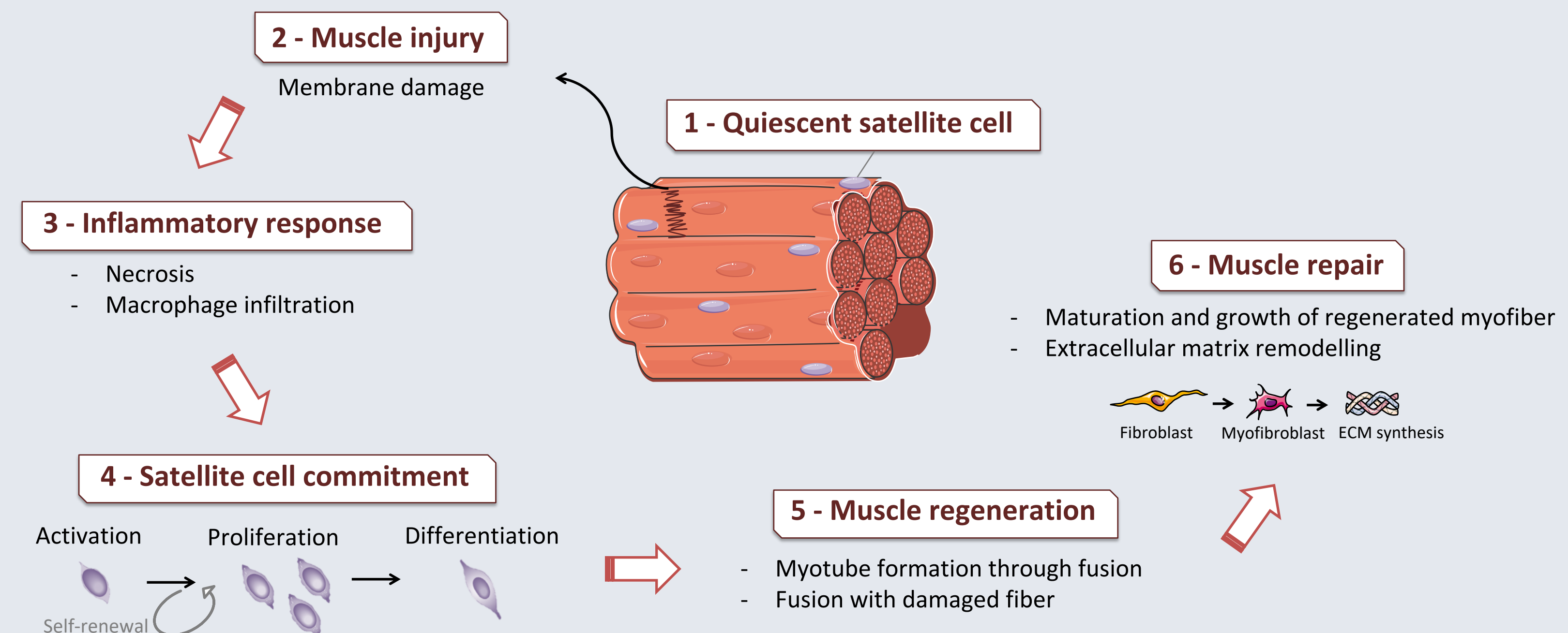
L. Lagalice^{1*}, J. Pichon^{1,2*}, E. Gougeon¹, S. Soussi¹, J. Deniaud¹, M. Ledevin¹, V. Maurier¹, I. Leroux¹, S. Durand³, C. Ciron¹, F. Franzoso¹, L. Dubreil¹, T. Larcher¹, K. Rouger^{1*} and M-A Colle^{1*}. 1: PAnTher INRA/Oniris UMR 703, Oniris, Nantes, France. 2: INSERM UMR 1089, Université de Nantes, Nantes, France. 3: BIA, INRA, Nantes, France * Contributed equally

BACKGROUND & OBJECTIVES

Pompe disease is a lysosomal storage disorder due to acid alpha-glucosidase (GAA) deficiency, leading to glycogen storage within lysosomes. Recently, a defect of satellite cell activation has been demonstrated on patient muscle biopsies as well as a severe alteration in the regenerative response, despite the extensive muscle damages (Schaaf *et al*, 2015).

The aim of this study was to determine the causes of the absence of satellite cells participation to muscle repair in Pompe disease and to evaluate :

- 1/ what is the incidence of tissue environment on satellite cell behavior in Pompe disease?
- 2/ what is the intrinsic potential of satellite cells in Pompe disease ?



ANIMALS & METHODS

Longitudinal histopathological study of muscle from Pompe disease mouse model

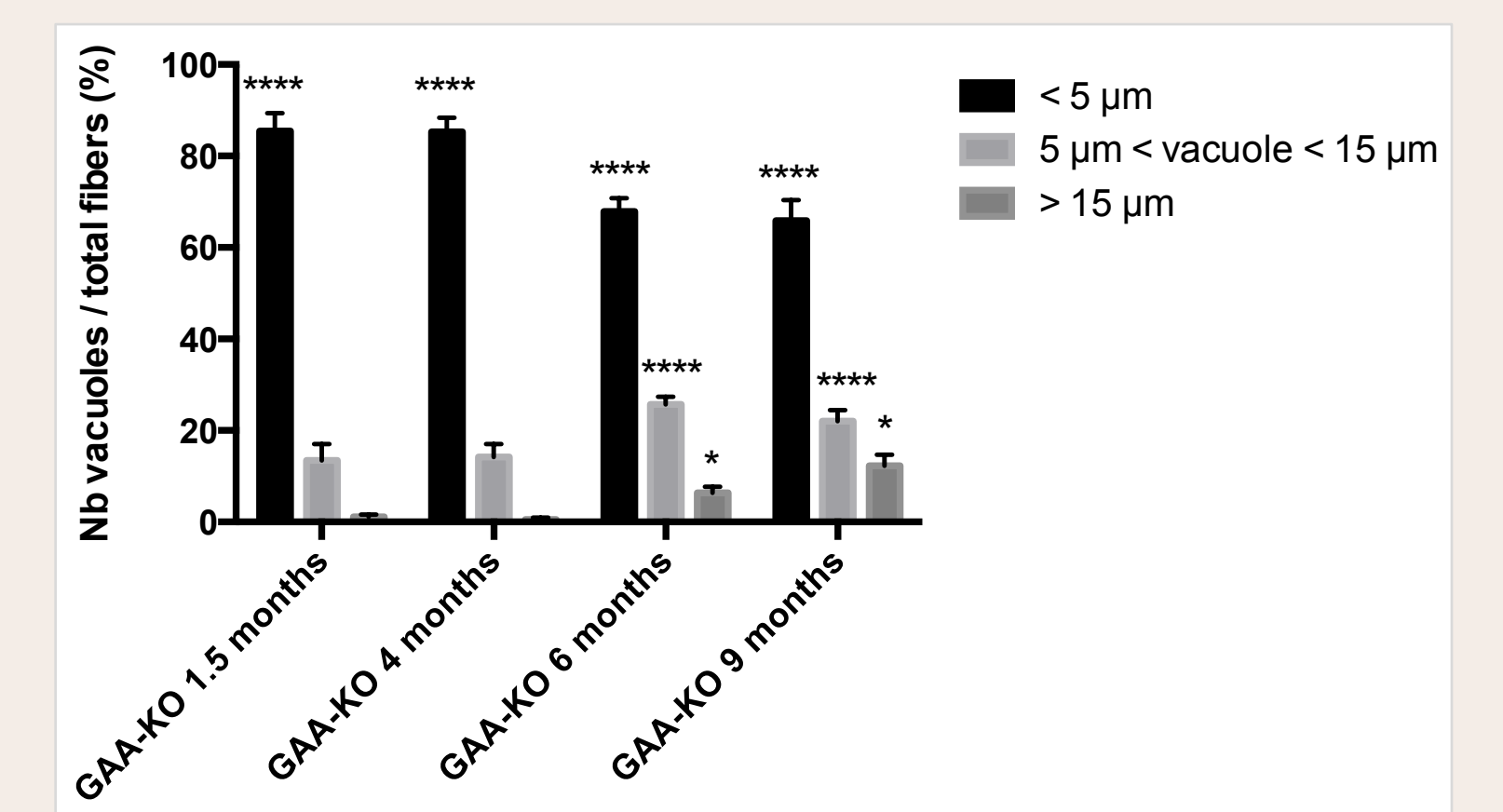
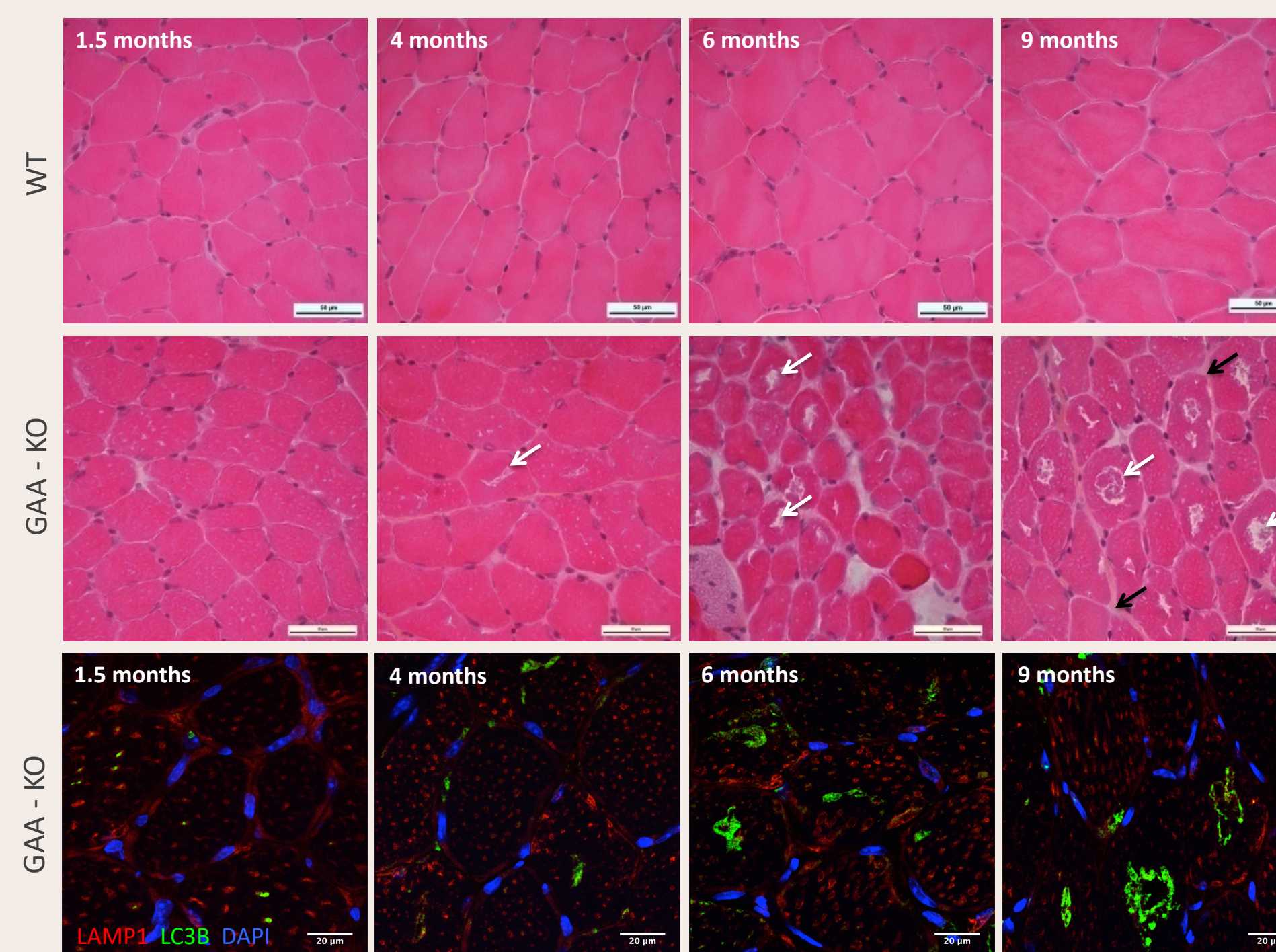
- GAA-KO mice and Wild Type (WT) aged from 1.5 to 9 months (n=5 per group)
- Hematoxylin eosin safran (HES) staining, immunolabelling against the lysosomal marker LAMP1, the autophagosomal marker LC3B and developmental myosin heavy chain isoform (MHCd)
- Phenotypic analysis of satellite cells by Pax7, Ki67, MyoD and MyoG immunolabelling

Study of muscle regeneration following injury with myotoxic agent

- Induction of muscle injury by intramuscular injection of cardiotoxin (CTX). Euthanasia at 4, 7 and 21 days post-injection (n=4 per group)
- HES staining, immunolabelling against Pax7 and dystrophin
- Anisocytosis evaluation performed by minimum of Feret's diameter (MinFerret) measurement using Fiji software.

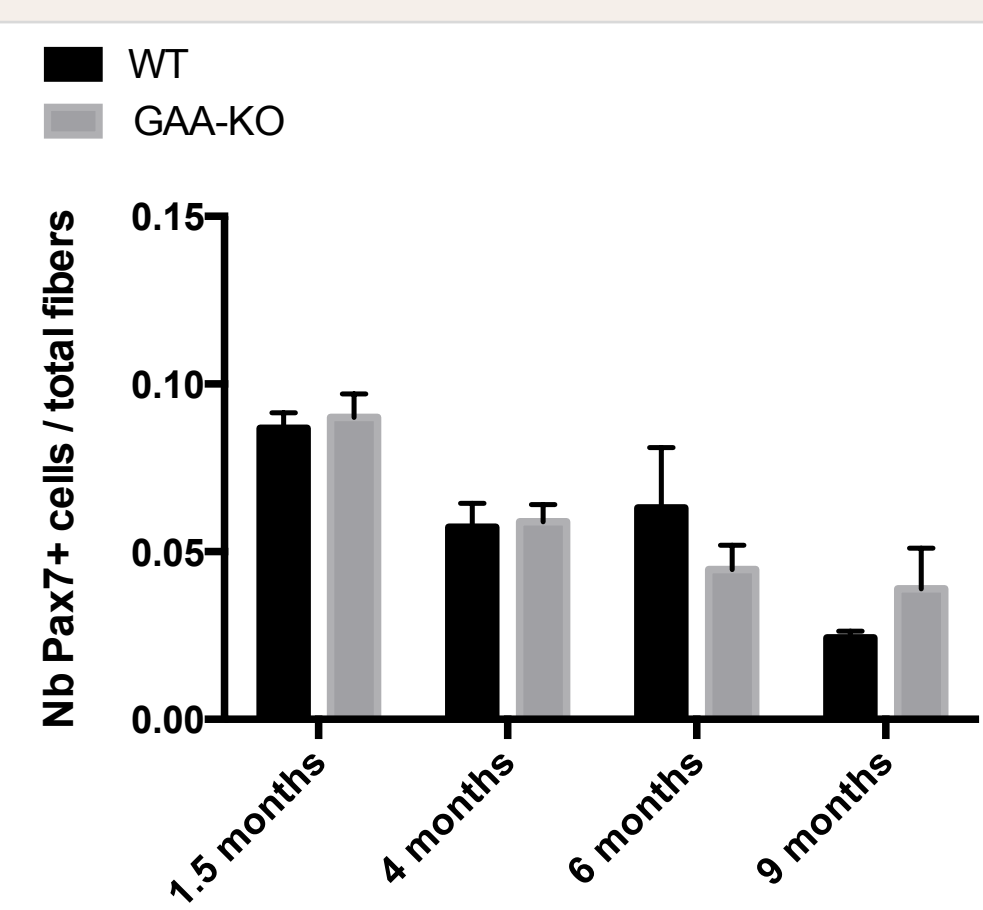
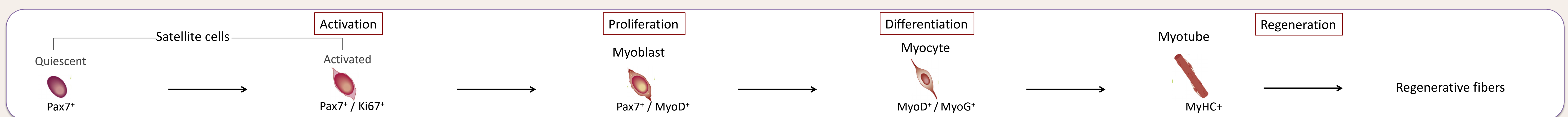
RESULTS

1/ Early and progressive muscle lesions related to accumulation of lysosomal and autophagic vesicles

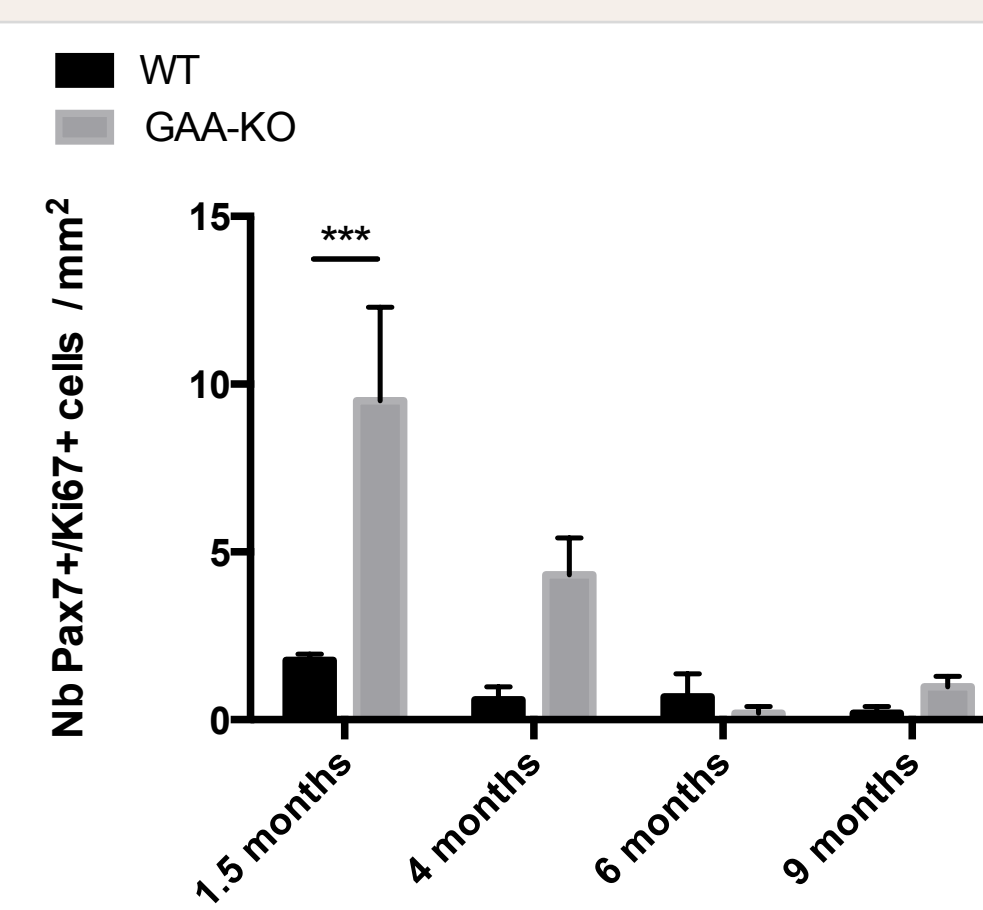


- Vacuolization of muscle fibers increasing in size and number with age of GAA-KO mice (white arrows & histogram)
- Endomysium thickening suggesting an abnormal regeneration process (black arrows)
- Progressive cytoplasmic accumulation of numerous enlarged lysosomes (LAMP1, red) and autophagosomes (LC3B, green)

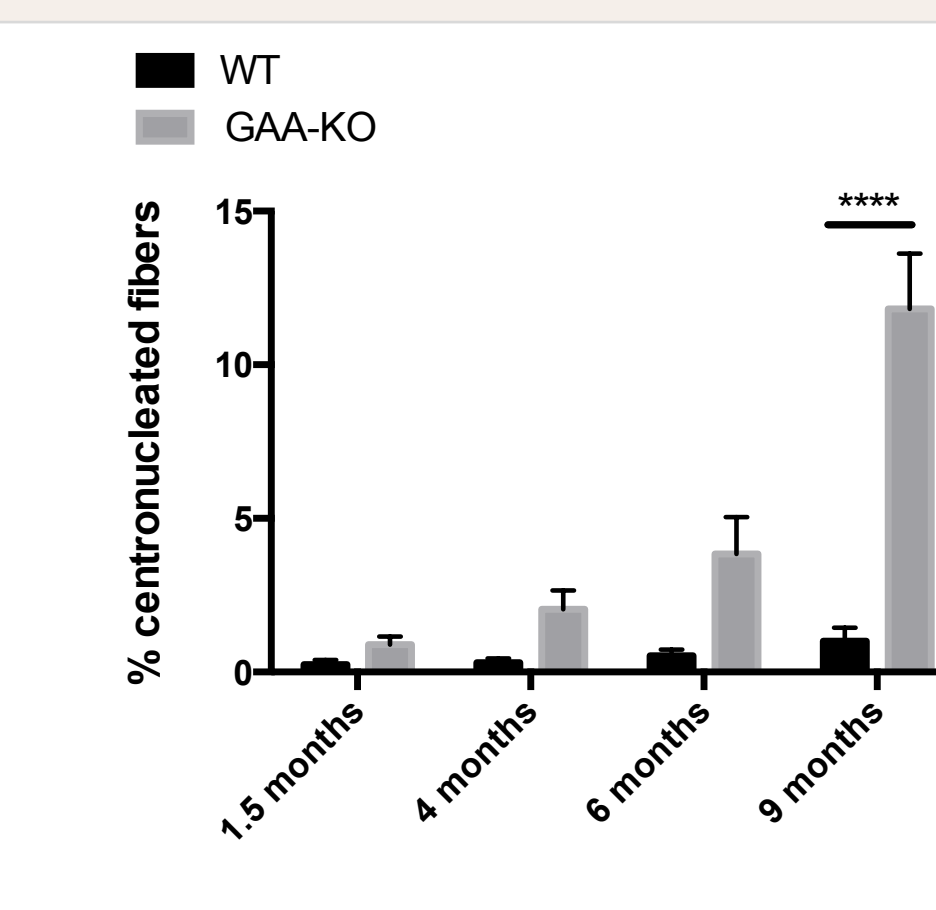
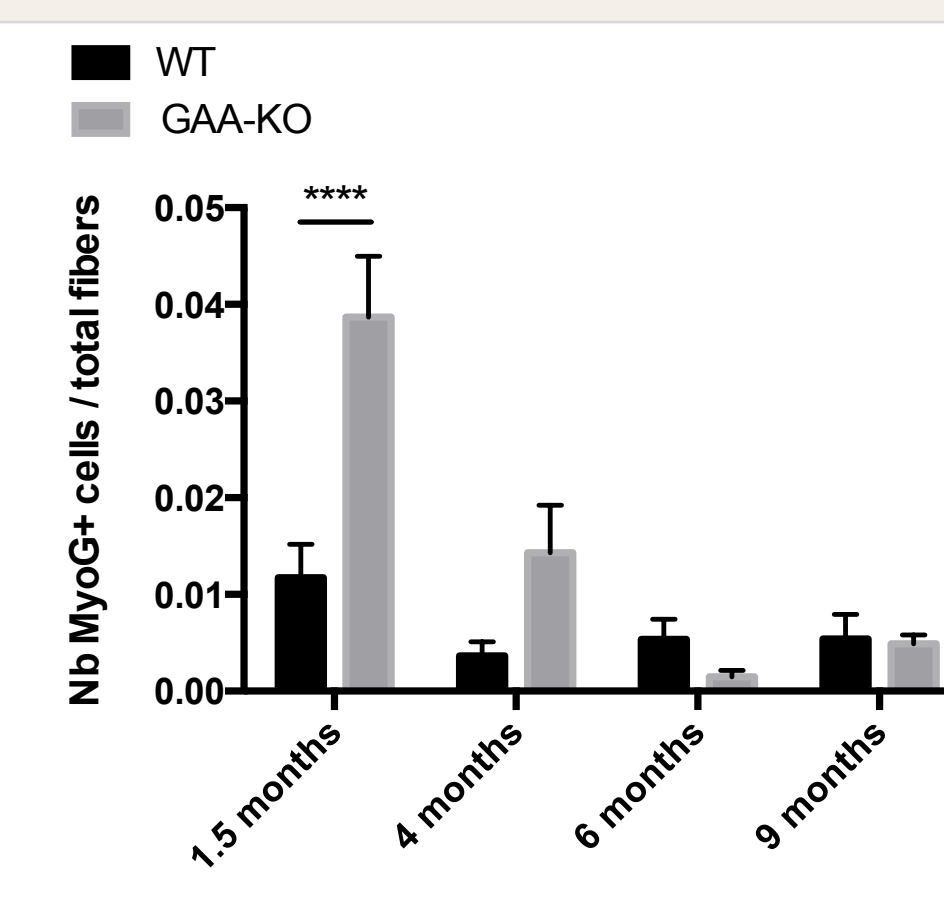
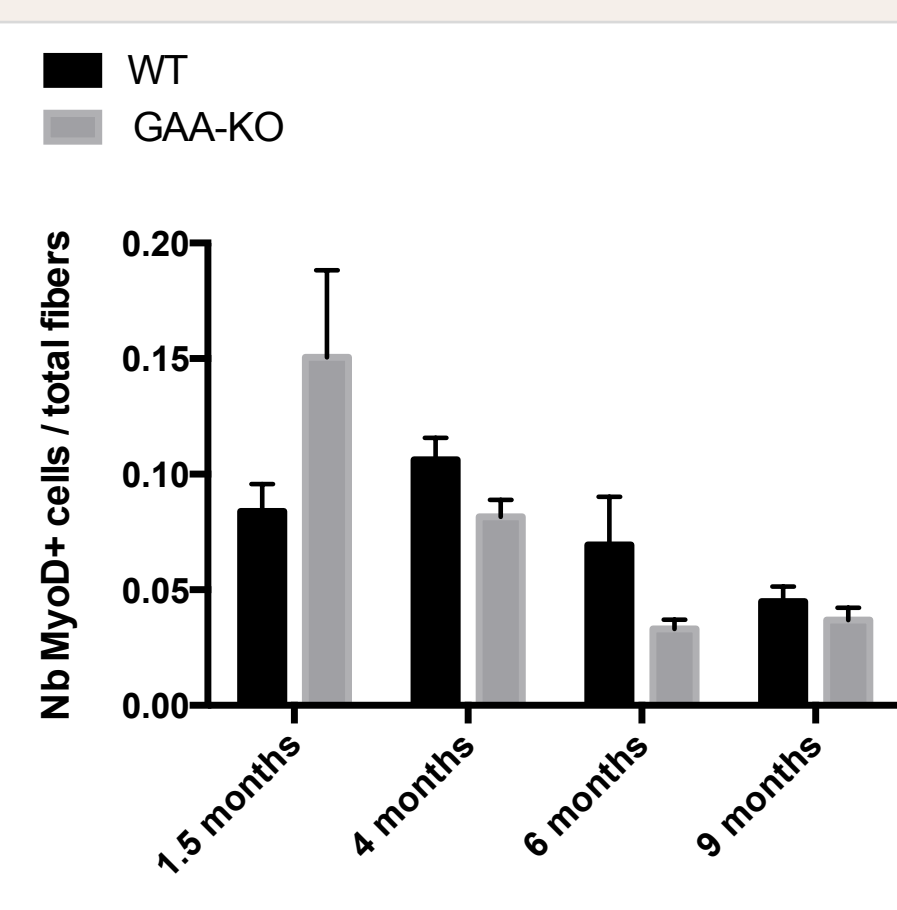
2/ Inappropriate participation of satellite cells to repair massive damaged muscle



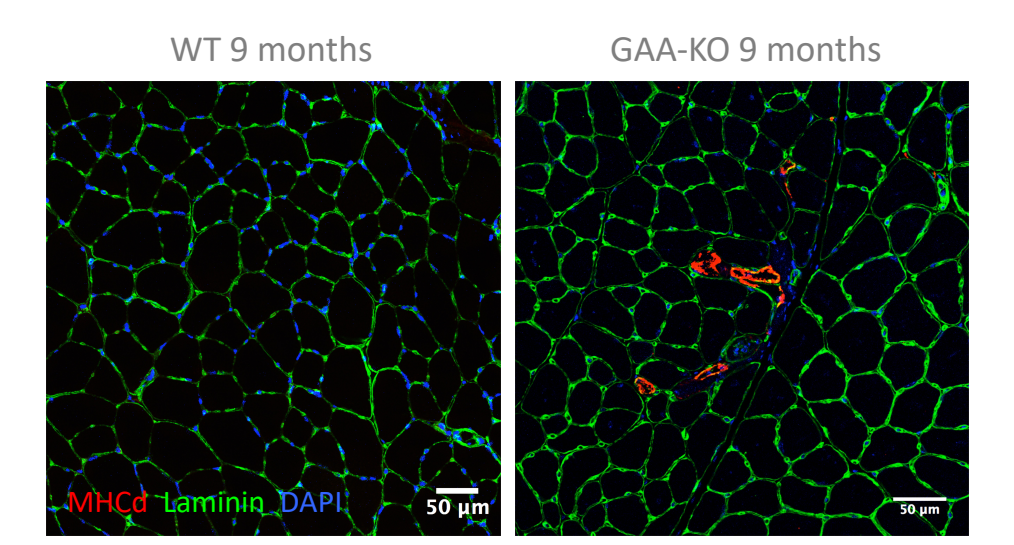
Intact satellite cell pool in GAA-KO mice muscle



Loss of activation, proliferation and differentiation potential of satellite cells from the age of 4 months



Increased but limited centronucleation at the advanced stage of the disease

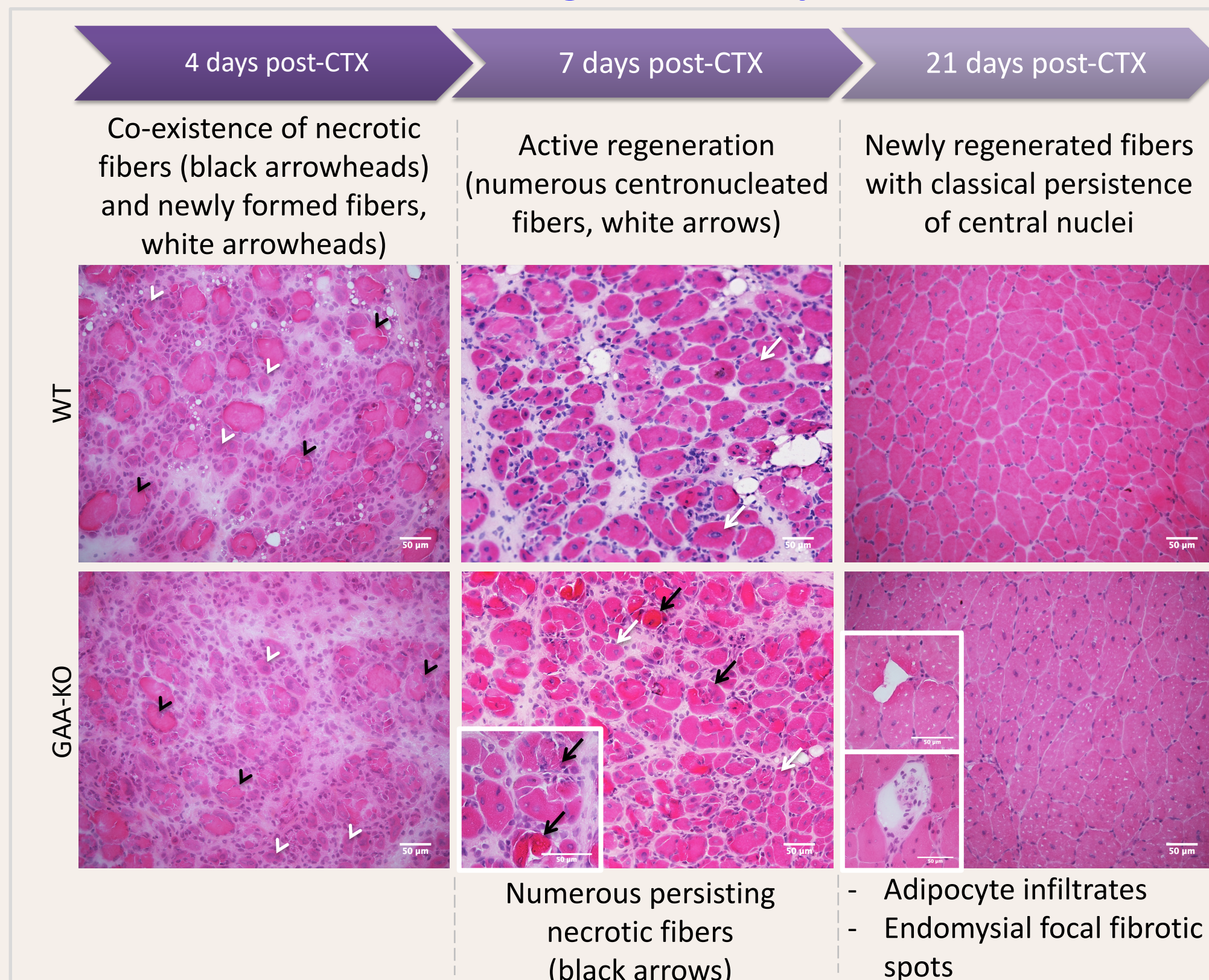


| Group | Percentage of MHCd+ fibers |
|-----------------|----------------------------|
| WT 9 months | 0.15 ± 0.03 |
| GAA-KO 9 months | 1.30 ± 0.51 |

Few small clusters of MHCd+ fibers in the whole tissue section

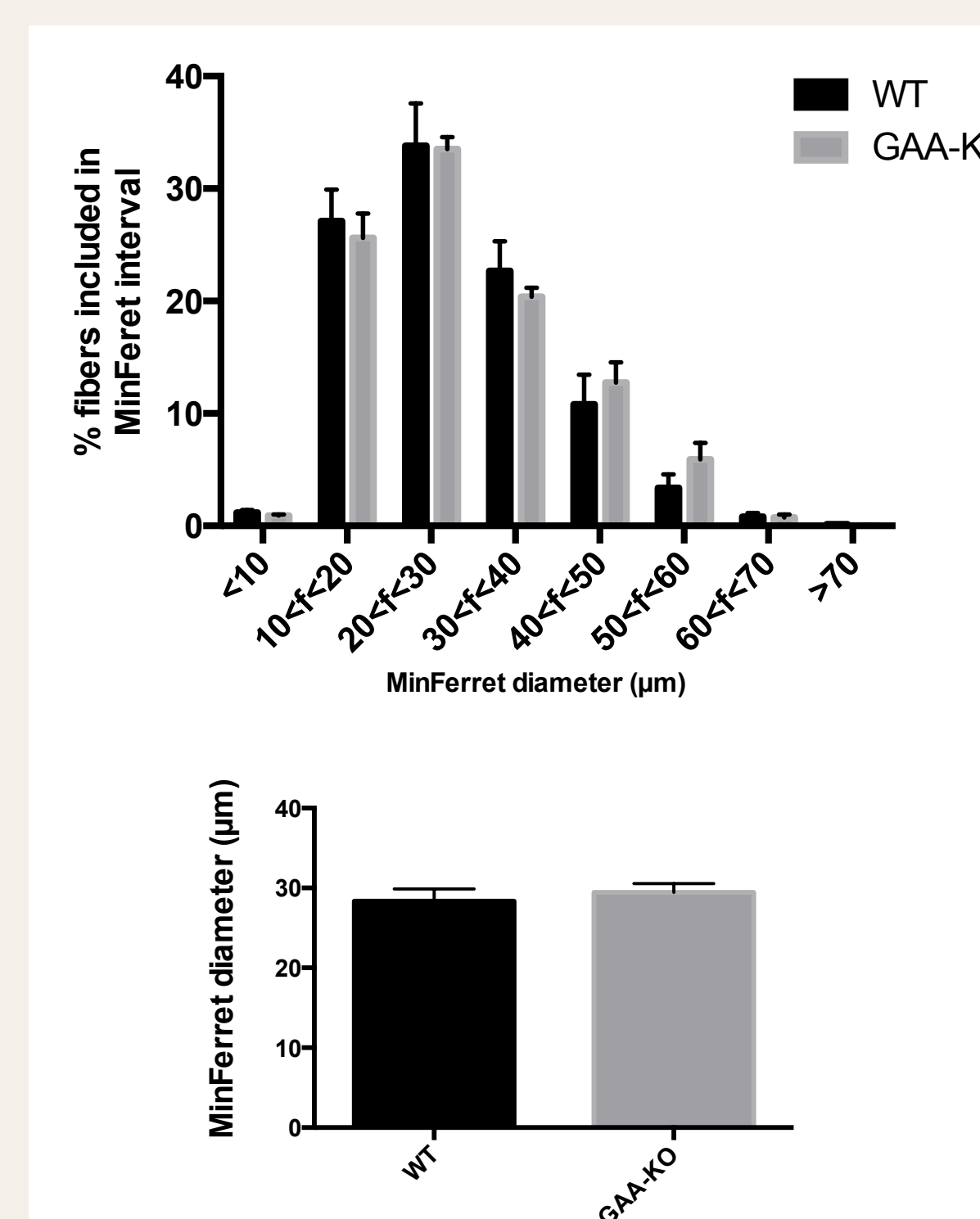
From age of 4 months, blocking of satellite cells in non-activated state, resulting in sporadic events of regeneration that strongly contrast with the generalized lesional state of muscle fibers

3/ Conservation of the regenerative potential for the satellite cells when submitted to acute stimulation...



- In GAA-KO mice:
- Delay in the regeneration process, particularly noticeable at 7 days post-CTX
 - At 21 days post-CTX, GAA-KO muscle tissue shows accomplished episode of regeneration with nevertheless sporadic histological abnormalities

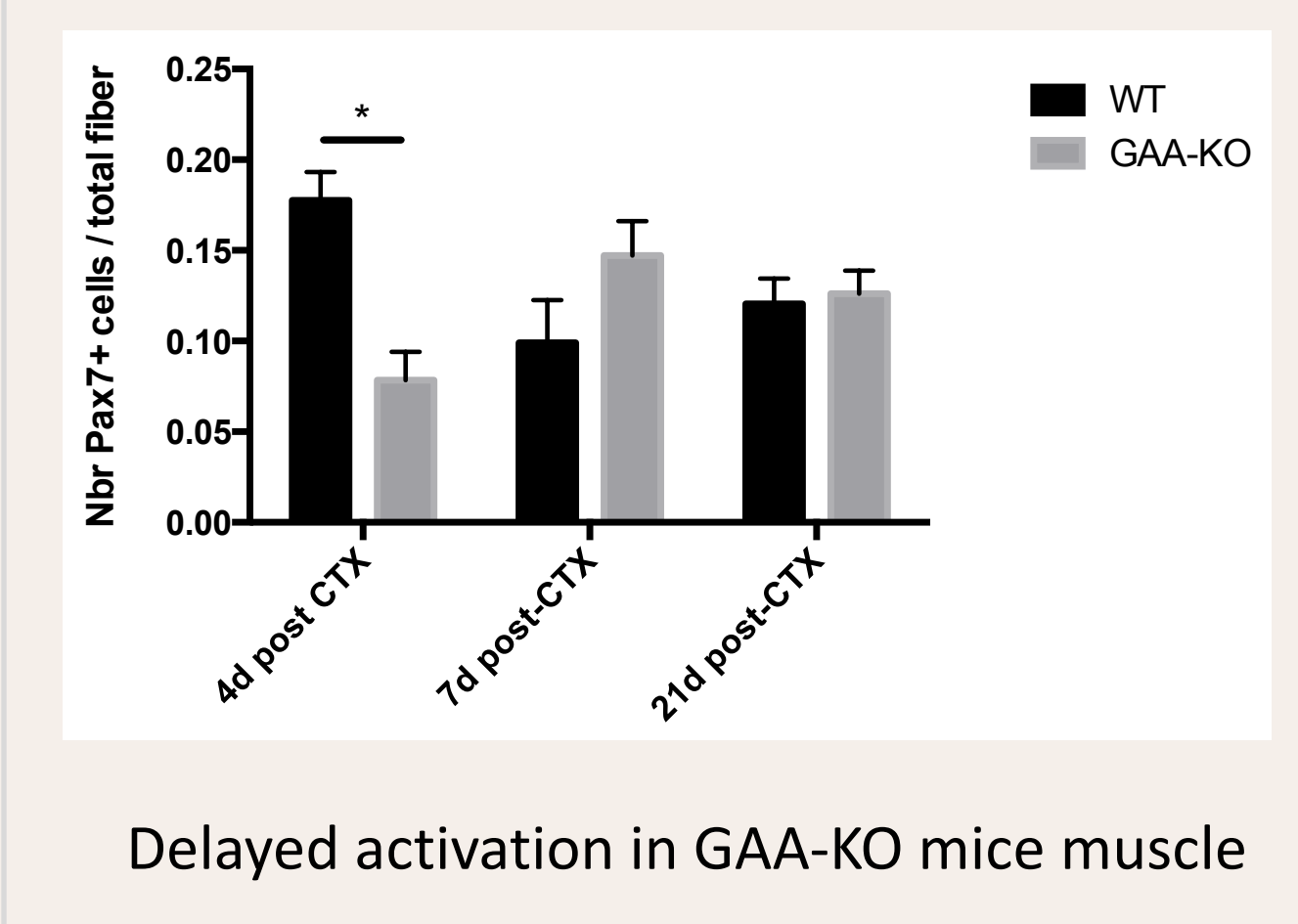
Anisocytosis evaluation at 21 days post-CTX



Homogeneous distribution of fiber size between WT and GAA-KO mice muscle

Similar mean diameter of muscle fibers between WT and GAA-KO mice

Satellite cell activation



Delayed activation in GAA-KO mice muscle

...But with a delay and muscle lesions evoking an intrinsic defect of GAA-KO satellite cells

CONCLUSION

- **6^{neo}/6^{neo} mice model is representative of human Pompe muscle:** our results are consistent with literature regarding the satellite cell activation defect despite the huge muscle damages (Schaaf *et al*, 2015).
- **In Pompe disease, skeletal muscle retains regenerative potential following *in vivo* injury,** demonstrating that the **failure of SC participation in repair is related to an activation signal defect.** *In vitro* experiments and a metabolic study could be useful to better characterize this defect.
- Our findings provide **new insight into the pathophysiology of Pompe disease** and highlight that the activation signal defect of SCs compromises muscle repair, which could be related to the **abnormal energetic supply following autophagic flux impairment.**