



**HAL**  
open science

## An intravascular ultrasound anisotropic elasticity-palpography technique for in vivo coronary atherosclerotic plaque detection and characterization

A. Gomez, A. Tacheau, G. Finet, R. Coppel, M. Lagache, J. Martiel, S. Lefloch, R. I. Pettigrew, G. Cloutier, Jacques Ohayon

### ► To cite this version:

A. Gomez, A. Tacheau, G. Finet, R. Coppel, M. Lagache, et al.. An intravascular ultrasound anisotropic elasticity-palpography technique for in vivo coronary atherosclerotic plaque detection and characterization. *Computer Methods in Biomechanics and Biomedical Engineering*, 2017, 20 (sup1), pp.97-98. 10.1080/10255842.2017.1382879 . hal-02067040

**HAL Id: hal-02067040**

**<https://hal.science/hal-02067040>**

Submitted on 14 Jan 2022

**HAL** is a multi-disciplinary open access archive for the deposit and dissemination of scientific research documents, whether they are published or not. The documents may come from teaching and research institutions in France or abroad, or from public or private research centers.

L'archive ouverte pluridisciplinaire **HAL**, est destinée au dépôt et à la diffusion de documents scientifiques de niveau recherche, publiés ou non, émanant des établissements d'enseignement et de recherche français ou étrangers, des laboratoires publics ou privés.



Distributed under a Creative Commons Attribution 4.0 International License

# An intravascular ultrasound anisotropic elasticity-palpography technique for *in vivo* coronary atherosclerotic plaque detection and characterization

A. Gomez<sup>a#</sup>, A. Tacheau<sup>a#</sup>, G. Finet<sup>b</sup>, R. D. Coppel<sup>a</sup>, M. Lagache<sup>c,d</sup>, J. L. Martiel<sup>a</sup>, S. Le Floc'h<sup>e</sup>, R. I. Pettigrew<sup>f</sup>, G. Cloutier<sup>g</sup> and J. Ohayon<sup>a,c</sup>

<sup>a</sup>Laboratory TIMC-IMAG/DyCTiM2, UGA, CNRS UMR 5525, In<sup>3</sup>S, Grenoble, France; <sup>b</sup>Department of Hemodynamics and Interventional Cardiology, Hospices Civils de Lyon and Claude Bernard University Lyon1, INSERM Unit 886, Lyon, France; <sup>c</sup>University of Savoie Mont-Blanc, Polytech Annecy-Chambéry, Le Bourget du Lac, France; <sup>d</sup>Laboratory SYMME, Chambéry, France; <sup>e</sup>Laboratory LMGC, CNRS UMR 5508, University of Montpellier II, Montpellier, France; <sup>f</sup>Laboratory of Integrative Cardiovascular Imaging Science, National Institute of Diabetes Digestive and Kidney Diseases, National Institutes of Health, Bethesda, MD, USA; <sup>g</sup>Laboratory of Biorheology and Medical Ultrasonics, CRCHUM, Montréal, Canada

**KEYWORDS** Coronary diseases; atherosclerosis; vulnerable plaque; inverse problem; young's moduli

## 1. Introduction

Critical to the detection of vulnerable plaque (VPs) rupture is quantification of their anisotropic mechanical properties (Finet *et al.* 2004, Nayak *et al.* 2017). A number of biomechanical studies have identified peak cap stress amplitude as a major key predictor of vulnerability to rupture. Quantifying intraplaque stress distribution, in order to predict plaque rupture, has been a challenge. To overcome this obstacle, the local strain has been measured based on intravascular ultrasound (IVUS) sequences. If we know the anisotropic local mechanical properties of the atherosclerotic lesion, then the intraplaque stress can be directly quantified. Therefore, on the basis of IVUS strain images, Céspedes *et al.* (2000) proposed an isotropic elasticity-palpography technique (E-PT). His approach was later improved by our group (Deleaval *et al.* 2013) to account for the non-concentric anatomic shape of the VPs. Even though these studies highlighted original, potential and promising 'homogenized' approaches for improving the evaluation of VP rupture, they did not overcome a main limitation related to the anisotropic mechanical behavior of the arterial wall and the atherosclerotic lesion media.

## 2. Material and Methods

### 2.1. Anisotropic elasticity index

The present biomechanical study was designed to extend the theoretical framework of the improved isotropic E-PT (Deleaval *et al.* 2013) by considering the anisotropic mechanical properties of the arterial wall and lesion constituents.

Based on the continuum mechanics theory prescribing the strain field, an anisotropic index (AI) was defined.

This extended anisotropic E-PT was successfully applied to several coronary lesions of patients imaged *in vivo* with IVUS at the Cardiologic Hospital Louis Pradel of Lyon. The robustness and performance of the new anisotropic elasticity-palpography index were also investigated with respect to noise, which may affect the prediction of plaque vulnerability.

## 3. Results

To test the numerical performance of the proposed anisotropic E-PT algorithm, a finite element (FE) method was used to generate our input set of intraplaque displacement and radial strain fields.

We used VP geometries of patients imaged *in vivo* with an IVUS system operating at 40 MHz, since realistic human VP geometries were needed to perform the FE simulations. The resulting FE displacement and radial strain fields computed in the cross-sectional plane of the pathological artery and the associated internal and external contours of the coronary were the only inputs of our inverse model.

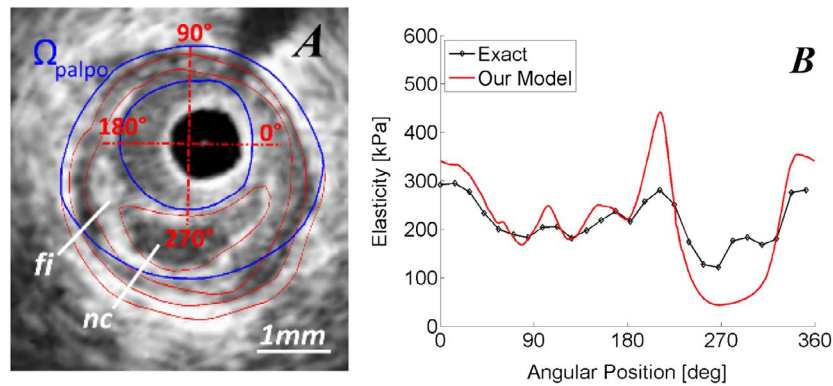
The performance of the anisotropic E-PT to detect and characterize a vulnerable plaque is showed on Figure 1.

## 4. Conclusion and clinical implication

The new anisotropic E-PT was successfully applied to several patients' coronary lesions. Our preliminary results

**CONTACT** J. Ohayon  [jacques.ohayon@univ-smb.fr](mailto:jacques.ohayon@univ-smb.fr)

<sup>#</sup>The PhD Students A. Gomez and A. Tacheau contributed equally to this work.



**Figure 1** A) IVUS image showing the palpography domain (blue contours). B) Comparisons between the exact palpogram of the anisotropic elasticity index AI (black curve), and the one obtained with our extended anisotropic E-PT (red curve). 'fi': fibrous region; 'nc': necrotic core.

showed that this original technique is sufficient to detect and identify VPs.

Stabilization of vulnerable plaque remains a significant clinical problem (Abela *et al.* 2011). Studies conducted to analyze the structural variation in the fibrous cap and necrotic core with specific drug treatments (e.g., all statins, angiotensin converting enzyme inhibitors, etc...) revealed an enhancement in plaque stability (Nozue *et al.* 2012). Our group showed (Finet *et al.* 2004) that a very slight increase in the mechanical properties of plaque constituents, namely the hardening of the lipidic necrotic core, can tilt a VP from instability to stability. Therefore, the proposed improved anisotropic elasticity-palpography imaging technique is promising since it provides a non-invasive approach to analyze *in vivo* the evolution of the anisotropic mechanical properties of atherosclerotic plaques during drug therapies.

### Acknowledgements

Ricardo D. Coppel Vizcarra and Armida Gomez would like to thank the Mexican National Council for Science and Technology (CONACYT) and the Nuevo Leon Institute of Innovation and Technology Transfer (I<sup>2</sup>T<sup>2</sup>).

### References

- Abela GS, Vedre A, Janoudi A, Huang R, Durga S, Tamhane U. 2011. Effect of Statins on Cholesterol Crystallization and Atherosclerotic Plaque Stabilization. *Am J Cardiol.* 107:1710–7.
- Céspedes EI, de Korte CL, van der Steen AF. 2000. Intraluminal ultrasonic palpation: assessment of local and cross-sectional tissue stiffness. *Ultrasound Med Bio.* 26(3):385–396.
- Deleaval F, Bouvier A, Finet G, Cloutier G, Yazdani SK, Le Floch S, Clarysse P, Pettigrew RI, Ohayon J. 2013. The intravascular ultrasound elasticity-palpography technique revisited: A reliable tool for the *in vivo* detection of vulnerable coronary atherosclerotic plaques. *Ultrasound in Med Bio.* 39(8):1469–81.
- Finet G, Ohayon J, Rioufol G. 2004. Biomechanical interaction between cap thickness, lipid core composition and blood pressure in vulnerable coronary plaque: impact on stability or instability. *Coron Artery Dis.* 15:13–20.
- Nayak R, Huntzicker S, Ohayon J, Carson N, Dogra V, Schifitto G, Doyley MM. 2017. Principal Strain Vascular Elastography: Simulation and Preliminary Clinical Evaluation. *Ultrasound Med Bio.* 43(3):682–699.
- Nozue T, Yamamoto S, Tohyama S, Umezawa S, Kunishima T, Sato A, Miyake S, Takeyama Y, Morino Y, Yamauchi T, et al. 2012. Statin treatment for coronary artery plaque composition based on intravascular ultrasound radiofrequency data analysis. *Am Heart J.* 163:191–9 e1.