





Open Archive Toulouse Archive Ouverte (OATAO)

OATAO is an open access repository that collects the work of Toulouse researchers and makes it freely available over the web where possible.

This is an author-deposited version published in: <http://oatao.univ-toulouse.fr/>
Eprints ID: 16397

To cite this version: Deconchat, Marc  and Alignier, Audrey  *High variability of edge effects on forest vegetation diversity*. (2012) In: Second International Conference on Biodiversity in Forest Ecosystems and Landscapes, 28 August 2012 - 31 August 2012 (Cork, Ireland)

Any correspondence concerning this service should be sent to the repository administrator:
staff-oatao@listes-diff.inp-toulouse.fr

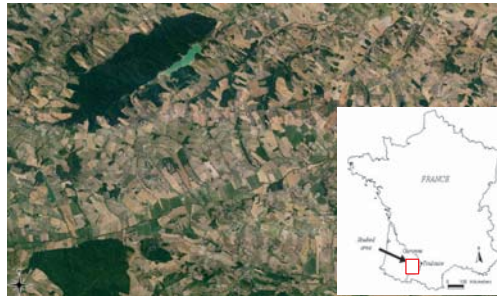
High variability of edge effects on forest vegetation diversity



Marc Deconchat & Audrey Alignier
UMR 1201 Dynafor – Toulouse - FRANCE
UMR 1347 Agroécologie – Dijon - FRANCE



So many forest edges in temperate landscapes: What are the consequences for biodiversity?



What is the pattern of distribution of forest vegetation near edges?

Plant census along 40m long transects in 32 woodlots



20 quadrats 2m x 2m



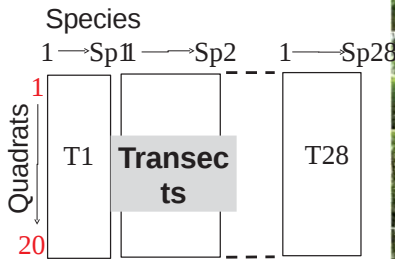
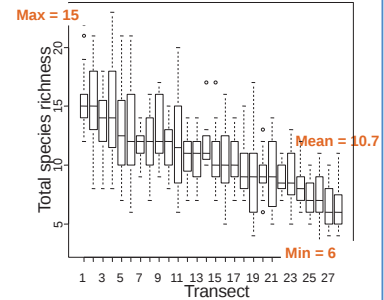
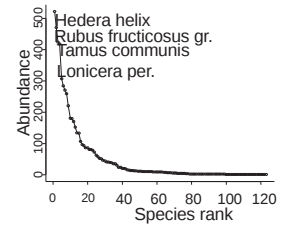
123 species from 42 families

- 42 woody species
- 75 herbaceous perennials
- 6 annual species

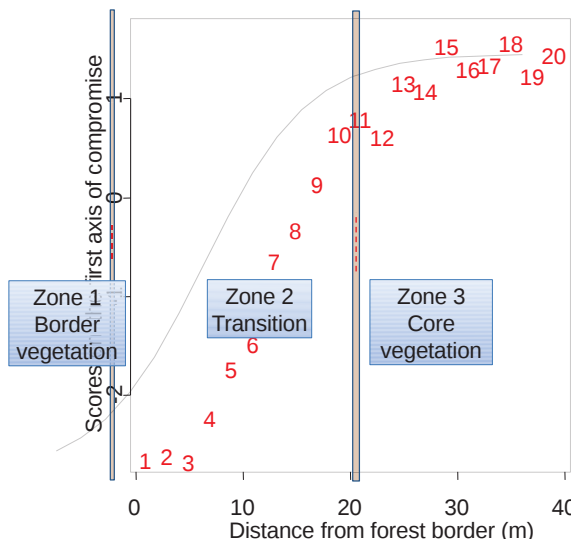
How to analyse simultaneously 28 transects?

Views of the transects from inside the forest

80% of species have an occurrence frequency <10%: High diversity between transects.



An un-expected 3-zones pattern revealed by k-tab ordination (STATIS)



Despite the high variability between transects, quadrats of the compromise based on the ordination of 28 transects are ranked with the distance from forest border.

3 zones in the pattern of distribution of forest vegetation near edges