



Western European populations of the ichneumonid wasp *Hyposoter didymator* belong to a single taxon

Marie Frayssinet, Philippe Audiot, Antonino Cusumano, Apolline Pichon,
Lisa Malm, Véronique Jouan, Marin Vabre, Serge Malavieille, Magalie
Delalande, Enrique Vargas-Osuna, et al.

► To cite this version:

Marie Frayssinet, Philippe Audiot, Antonino Cusumano, Apolline Pichon, Lisa Malm, et al.. Western European populations of the ichneumonid wasp *Hyposoter didymator* belong to a single taxon. *Frontiers in Ecology and Evolution*, 2019, 7, 12 p. 10.3389/fevo.2019.00020 . hal-02059777

HAL Id: hal-02059777

<https://hal.science/hal-02059777>

Submitted on 6 Mar 2019

HAL is a multi-disciplinary open access archive for the deposit and dissemination of scientific research documents, whether they are published or not. The documents may come from teaching and research institutions in France or abroad, or from public or private research centers.

L'archive ouverte pluridisciplinaire **HAL**, est destinée au dépôt et à la diffusion de documents scientifiques de niveau recherche, publiés ou non, émanant des établissements d'enseignement et de recherche français ou étrangers, des laboratoires publics ou privés.



Distributed under a Creative Commons Attribution 4.0 International License



Western European Populations of the Ichneumonid Wasp *Hyposoter didymator* Belong to a Single Taxon

Marie Frayssinet^{1†}, Philippe Audiot^{2†}, Antonino Cusumano¹, Apolline Pichon¹, Lisa E. Malm¹, Véronique Jouan¹, Marin Vabre³, Serge Malavieille³, Magalie Delalande⁴, Enrique Vargas-Osuna⁵, Denis Bourguet^{2*} and Anne-Nathalie Volkoff^{1*}

¹ DGIMI, INRA, University of Montpellier, Montpellier, France, ² CBGP, INRA, IRD, CIRAD, Montpellier SupAgro, Montpellier-sur-Lez, France, ³ DIASCOPE, INRA, Mauguio, France, ⁴ AGAP, University of Montpellier, CIRAD, INRA, Montpellier SupAgro, Montpellier, France, ⁵ UCO, University of Cordoba, Cordoba, Spain

OPEN ACCESS

Edited by:

Casper Nyamukondiwa,
Botswana International University of
Science and Technology, Botswana

Reviewed by:

Antonino Malacrinò,
The Ohio State University,
United States
Eric George Chapman,
University of Kentucky, United States

*Correspondence:

Denis Bourguet
denis.bourguet@inra.fr
Anne-Nathalie Volkoff
anne-nathalie.volkoff@inra.fr

[†]These authors share co-first
authorship

Specialty section:

This article was submitted to
Population and Evolutionary
Dynamics,
a section of the journal
Frontiers in Ecology and Evolution

Received: 09 November 2018

Accepted: 22 January 2019

Published: 19 February 2019

Citation:

Frayssinet M, Audiot P, Cusumano A, Pichon A, Malm LE, Jouan V, Vabre M, Malavieille S, Delalande M, Vargas-Osuna E, Bourguet D and Volkoff A-N (2019) Western European Populations of the Ichneumonid Wasp *Hyposoter didymator* Belong to a Single Taxon. *Front. Ecol. Evol.* 7:20. doi: 10.3389/fevo.2019.00020

Hyposoter didymator (Hymenoptera, Ichneumonidae) is a generalist solitary endoparasitoid of noctuid larvae. In the present work, we tested whether populations of *H. didymator* were divided in several genetically distinct taxa as described for many other generalist parasitoid species, and whether differences in *H. didymator* parasitism rates were explained by the insect host species and/or by the plant on which these hosts were feeding on. The genetic analysis of natural populations collected in different regions in France and Spain on seven different insect hosts and seven different host plants (775 individuals) showed that *H. didymator* populations belong to a unique single taxon. However, *H. didymator* seems to be somewhat specialized. Indeed, in the fields it more often parasitized *Helicoverpa armigera* compared to the other host species collected in the present work. Also, *H. didymator* parasitism rates in field conditions and semi-field experimental studies were dependent on the host plants on which *H. armigera* larvae are feeding. Still, *H. didymator* can occur occasionally on non-preferred noctuid species. One hypothesis explaining the ability of *H. didymator* to switch hosts *in natura* could be related to fluctuating densities of the preferred host over the year; this strategy would allow the parasitoid to avoid seasonal population collapses.

Keywords: *Hyposoter didymator*, *Helicoverpa armigera*, population genetic structure, host preferences, western European populations

INTRODUCTION

Endoparasitoids are insect wasps. Free-living when they are adults, they complete their larval development within the body of another insect eventually killing it. Because of their particular lifestyle, they have intricate physiological interactions with their hosts that allow them to optimally exploit host resources (Harvey, 2005). Therefore, many endoparasitoids tend to have narrow host ranges and parasitize one or a few phylogenetically related species, which often share similar biological or ecological characteristics (Godfray, 1994; van Veen et al., 2008). However, there is a continuum in amplitude of host ranges within endoparasitoids, some being highly specialized (e.g., *Hyposoter horticola*; Lei and Hanski, 1998) and others reported as generalists (e.g., *Cotesia marginiventris*; Tamò et al., 2006). Generalists can exploit a broad range of hosts, and because of their ability to shift to another host when one host population is at low density, they should have

a higher overall fitness compared to specialists in case of fluctuating host resources. On the other side, specialized parasitoids are thought to be more efficient compared to generalists in exploiting a particular host because of the trade-off between host range and host-use efficiency (reviewed in Gagic et al., 2016). According to Loxdale et al. (2011), “generalism is unlikely to be maintained in nature through speciation,” and for many generalist endoparasitoid species, they are in fact a complex of several specialized taxa reproductively isolated and genetically differentiated.

Host range can vary depending on two main parasitoid features: its behavioral responses to hosts (and host environment) allowing successful host detection, and its ability to develop or not in the host. Development will depend on host suitability (e.g., allowing or inhibiting parasitoid development and survival) and quality (e.g., provision of nutritional resources allowing or not the parasitoid to reach optimal body size and development time) which may vary depending on the species, development stage, etc. (Antolin et al., 2006). It also depends on the ability for the parasitoid to regulate certain aspects of host biology. Hence, many endoparasitoids use a large range of strategies to modulate host physiology for their own benefit (i.e., in a way that increases offspring fitness). Better known strategies are injection of immune depressing venom toxins by the ovipositing female (Poirié et al., 2014) or production in female reproductive tract of mutualist virus particles then delivered into the host (Pichon et al., 2015; Strand and Burke, 2015).

We focused here on the Palearctic species *Hyposoter didymator* (Ichneumonidae; Campopleginae) whose host range includes several closely related moth species within the Noctuidae family. *H. didymator* is an important biological control agent of greenhouse pests in the whole Mediterranean region. It has been reported in France, Spain, Italy, but also in the Near East, central Asia, and north Africa (<http://www.catalogueoflife.org/col/details/database/id/68>). In Europe, its published natural hosts are *Chrysodeixis chalcites* and *Lacanobia oleracea* (Reudler-Talsma et al., 2007), although *H. didymator* attacks other species, including *Helicoverpa armigera* (Carl, 1978; Bar et al., 1979; Torres-Vila et al., 2000), *Mythimna loreyi* (Sertkaya and Bayram, 2005) or *Spodoptera littoralis*, a species native to Africa but present in Spain (Hatem et al., 2016). *H. didymator* can also successfully reproduce in novel hosts in the laboratory and can be maintained successfully on the Nearctic species *Spodoptera frugiperda*, a non-natural host for this parasitoid (Dorémus et al., 2014). Actually, host suitability and quality for *H. didymator* appear to be more dependent on the phylogenetic relatedness of the hosts than on a previous encounter between *H. didymator* and the host species (Harvey et al., 2012). In *H. didymator*, success of parasitism relies on a mutualist endogenous polydnavirus named *Hyposoter didymator* Ichnovirus (HdIV). The virus replicates in the female's ovaries and viral particles are injected along with the egg into the host larva during oviposition. Infection by HdIV of host tissues leads to modulation of the host physiology and development to render it suitable for the wasp development (Dorémus et al., 2014).

The present work arises from the observation that *H. didymator* is widely distributed and currently known as a

generalist endoparasitoid of several noctuid larvae feeding on different plants. Our goal was to know whether or not there is a host-associated differentiation in *H. didymator*. For this purpose, we performed a set of experiments and analyses to test: (i) whether or not populations of *H. didymator* are divided into several genetically distinct taxa, and (ii) whether *H. didymator* parasitism rates were linked to host species and/or to the host plants on which these hosts were feeding.

MATERIALS AND METHODS

Population Genetic Structure

Collections of *H. didymator* Populations

Collections of *H. didymator* were undertaken over a period of 5 years (2011–2016) in France and Spain. Depending of the year, the site and the flights of the insect host species, the sampling was done from late April to November (most commonly from June to October). Sampling was performed on several host plants in more than 30 sites in France and 3 sites in Southern Spain. In those sites and host plants, we collected larvae of several noctuid species, mainly *H. armigera*, *Autographa gamma*, *Spodoptera exigua*, and *S. littoralis*. The characteristics of each sample (geographical location, the insect host from which it emerged and the host plant on which the insect host was collected from) is detailed in **Supplemental Table 1**.

Because *H. didymator* is a solitary parasitoid that develops in young larval stages, only early stages (L1 to L4) of noctuid moth larvae were collected. Upon collection, these noctuid larvae were brought to the quarantine laboratory and maintained on their host plants or on artificial diet until parasitoid cocoon formation and adult emergence. The number of adult parasitoids that emerged was recorded for each sampling site.

When adult parasitoids from species other than *H. didymator* emerged from the noctuid hosts, their genera or species have been roughly identified using COI barcoding (Hebert et al., 2003) when collected for the first time. Briefly, genomic DNA was extracted from adults using Wizard® Genomic DNA Purification Kit (Promega) according to manufacturer instructions. Genomic DNA (gDNA) was used as a template for PCR amplification using COI specific primers (LCO1490: 5'-GGT CAA CAA ATC ATA AAG ATA TTG G-3' and HC02198: 5'-TAA ACT TCA GGG TGA CCA AAA AAT CA-3', as described in Folmer et al. (1994). The 50 µl PCR reaction typically contained 2 µl of gDNA (200 ng), 0.25 µl of Taq DNA polymerase (Promega), 10 µl of 5X Taq Buffer (Promega), 2 µl of each primer (10 µM), 4 µl of MgCl₂ (50 mM), 1 µl of dNTP (1 mM) and ultrapure water, with the following thermal cycle: initial denaturing for 5 min at 95°C; pairing for 30 cycles (30 s at 95°C, 45 s at 58°C, and 1 min at 72°C); final extension 5 min at 72°C. PCR amplification products were sent for sequencing by Eurofins, and annotated subsequent to a Blastn similarity search against NCBI nr database. The sequences are available in **Data Sheet 1**.

Genotyping

From the sampling performed between 2011 and 2016, we obtained a total of 775 *H. didymator* adults (451 females) originated from 8 regions, 7 insect hosts and on 7 host plants

(Table 1 and Supplemental Table 1). DNAs were extracted using the DNeasy Blood & Tissue Kit (Qiagen). Each individual was genotyped at the 14 polymorphic microsatellite loci developed by Audiot et al. (2014). They included 10 loci named HD located within the *H. didymator* genome and 4 loci named Hdiv located within the *H. didymator* ichnovirus genome. Hdiv6 was within the segment Hd23 (GenBank KJ586309) and overlaps with the HdIV gene *Rep1_Hd23*, Hdiv7 was within the segment Hd7 (GenBank KJ586326) and was located close to the gene *U1_Hd7*, Hdiv8 was located at the extremity of the proviral segment Hd4 (GenBank KJ586330) and Hdiv9 was within the segment Hd11 (GenBank KJ586322) and was located between two viral ankyrin genes (*Vank3_Hd11* and *Vank4_Hd11*). The forward primer of each locus was 5'-end-labeled with a fluorescent dye: FAM (Eurogentec), VIC, NED or PET (Applied Biosystems) as described in Audiot et al. (2014). The 14 loci were amplified in two multiplex (M1 and M2) PCRs and analyzed in two runs. The PCRs were performed on a Mastercycler ep gradient S (Eppendorf) using the Qiagen Multiplex PCR Kit. They were conducted in 10 μ L reaction volume containing the QIAGEN Multiplex PCR Master Mix (1x) (including Taq, dNTPs and a final concentration of 3 mM of MgCl₂), 0.2 μ M of each primer, and 1 μ L of genomic DNA. PCRs started with an initial activation step at 95°C for 15 min, followed by 32 cycles with denaturation at 94°C for 30 s, annealing at 58°C for 1.5 min, extension at 72°C for 1 min and final extension of 60°C for 30 min. The PCR products were diluted 100-fold, then 2 μ L of each diluted PCR product were mixed with 18 μ L of mix for sequencing (8 μ L of GeneScan 500 LIZ Size Standard plus 2 mL of Hi-Di Formamide (Applied Biosystems) prepared for one plate). The samples were separated and detected on an ABI 3130 automated sequencer and analyzed using GeneMapper v.3.7 (Applied Biosystems, USA).

Host Plant Preferences

Experimental Set-Up

This non-choice experiment was conducted with BioQuip Greenhouse Cages (cat#1466E) installed outdoors (within a containment dispositive since *H. armigera* is classified as a quarantine species in France; see description in Supplemental Figure 1) to prevent contamination and escapes. The dispositive included eight 2-m-high cages covering a surface area of 9 m² (3 \times 3 m) built with iron frames covered with an insect-proof netting (150 μ m). The experiment took place at the DIASCOPE INRA research station (Mauguio, France).

Each cage contained three patches—each patch containing several plants—of either alfalfa (*Medicago sativa*), corn (*Zea mays*) or chickpeas (*Cicer arietinum*), probes allowing temperature and hygrometry monitoring and a drip irrigation system. For each host plant species, we performed five replicates over the summer season.

Laboratory Insect Strains

The *H. armigera* strain originated from adults captured in 2014 in Montpellier region using pheromone and light traps. Adults collected in these traps were brought to the laboratory, placed in cages containing alfalfa (*Medicago sativa*) plants, and

TABLE 1 | Number of total (*N*) and females (*N* females) of *Hyposoter didymator* samples that were genotyped by microsatellite sequencing.

Category		<i>N</i>	<i>N</i> females
Region	Bretagne	49	20
	Corse	92	52
	Hyères	9	6
	Marciac	1	1
	Montpellier	481	255
	Villereal	75	71
	Canaries	4	4
	Seville	64	42
Host plant	<i>Apium graveolens</i>	7	5
	<i>Brassica napus</i>	101	44
	<i>Brassica oleracea</i>	2	2
	<i>Cicer arietinum</i>	11	3
	<i>Medicago sativa</i>	644	390
	<i>Sorghum bicolor</i>	3	1
	<i>Zea mays</i>	3	2
	Unknown	4	4
Insect host	<i>Autographa gamma</i>	59	26
	<i>Chrysodeixis chalcites</i>	4	4
	<i>Helicoverpa armigera</i>	604	366
	<i>Spodoptera exigua</i>	11	7
	<i>Spodoptera littoralis</i>	15	12
	<i>Xylena exsoleta</i> , <i>Agrochola</i>	45	11
	<i>lychnidis</i> , or <i>Mamestra oleracea</i>		
	Unknown	37	25

allowed for mating and oviposition. Eggs were collected and, after hatching, larvae were kept on alfalfa plants until being used in the experiment.

The *H. didymator* DGIMI's laboratory colony originated from wasps issued from *H. armigera* larvae collected on alfalfa fields in Montpellier region, and maintained on *S. frugiperda* for more than 50 generations. The *Spodoptera frugiperda* DGIMI's laboratory strain (corn variant) originated from insects collected in La Réunion, then reared in the DGIMI's insectarium for more than 10 years on Poitout artificial diet (Poitout et al., 1972) at 25°C.

Experiment

On each cage, during the first day of the experiment (day 1), twenty *H. armigera* larvae (early third instars) were deposited on each patch (leading to a total of 60 larvae per cage). Within each cage, 6 mated 3-days old *H. didymator* females and 2 *H. didymator* males were released 6 h after depositing the *H. armigera* larvae. Six days after, all plants were carefully leafed out to count the number of live, dead or missing host larvae. At the end of the experiment, parasitoids were searched for, and the number of live or dead wasps was recorded. Host larvae which were alive were then brought to the laboratory to calculate the parasitism rate (estimated as the number of formed *H. didymator* cocoons).

Data Analyses

Population Genetic Structure

Genetic clustering

Bayesian clustering analyses were conducted using the software STRUCTURE (Pritchard et al., 2000), version 2.3.2 (Hubisz et al., 2009). This version of STRUCTURE offers the possibility to use samples characteristics (i.e., geographical location, insect host and host plant on which the adult of *H. didymator* was originated from) as a prior and to give more prior weight on clustering outcomes that are correlated with these samples characteristics. Analyses were performed using (1) all microsatellite loci (i.e., using HD and Hdiv loci), (2) all 10 HD loci (i.e., excluding the 4 Hdiv loci) and (3) all 4 Hdiv loci (i.e., excluding the 10 HD loci).

We varied the number of putative genetic clusters (K) between 1 and 4 and performed 20 independent runs for each value of K. Each Markov chain was run for 200,000 steps, after a 50,000-step burn-in period, using the admixture model for correlations of allele frequencies across clusters, with the default value for parameter α and the default prior for Fst. As K is increased the most divergent groups are expected to separate into distinct clusters first (Pritchard et al., 2000; Fontaine et al., 2007). To determine the optimal K value, we compared the plots of $\ln P(D)$ and ΔK (Evanno et al., 2005) using STRUCTURE HARVESTER v0.6.94 (Earl and vonHoldt, 2012). In brief, ΔK is a measure of the second order rate of change in the likelihood of K and its maximum indicates the breakpoint in the slope of the distribution of $\ln P(D)$ for the different K values tested.

Genetic differentiation

Across all individuals, the overall genetic diversity at each microsatellite locus was calculated using GENEPOP 4.0 (Rousset, 2008). For each sample of *H. didymator* containing at least 20 females ($n = 7$ samples), we tested for deviation from Hardy Weinberg equilibrium (HWE) for each locus and over all loci using Fisher's exact test as implemented in GENEPOP 4.0. Because males *H. didymator* are haploids, these deviations from HWE were tested using females only.

For each locus, across all loci, across HD loci and across Hdiv loci, we estimated the genetic differentiation—using the Fst values (Weir and Cockerham, 1984)—overall samples and between each pair of samples containing at least 20 individuals ($n = 12$ samples).

We also performed a hierarchical analysis of molecular variance (AMOVA) (Excoffier et al., 1992), based on allele frequency information, using the hierfstat package (Goudet, 2005) and the version 3.4.4 of R (R Core Team, 2015). This analysis allowed us to assess the relative effect of the geographical location, host plants and insect hosts and on *H. didymator* population structure with respect to total genetic variation. The AMOVA was performed using all loci, using the HD loci and using the Hdiv loci.

Parasitism Rates

Parasitism rates were analyzed with logistic regression models, i.e., generalized linear models (GLMs) and generalized linear mixed models (GLMMs) with binomial error distribution and logit link function. In field collection survey, we constructed a

GLM to test the dependence of parasitism rates achieved by *H. didymator* on the fixed factors host species, host plant species, locality and year of sampling. In the cage experiment, we used a GLMM to test if parasitism rates achieved by *H. didymator* on the host *H. armigera* were significantly affected by the fixed factor host plant (chickpeas, alfalfa and corn) using the cage ID as random factor. When overdispersion was detected in the models, we corrected for this by fitting quasi-binomial distributions in order to have a multiplicative overdispersion factor. Model fit was assessed with residual plots. Significance of each fixed factors in GLMs and GLMMs was determined using likelihood ratio tests (LRTs) comparing the full model with and without the factor in question, starting with higher-order interactions (Crawley, 2007). *Post-hoc* comparisons were carried out using the *glht* function found in the *multcomp* package of the R statistical software (Bretz et al., 2010).

A quantitative food web with the data recorded from the field survey of noctuid species and their larval parasitoids was constructed using the *bipartite* package (Dormann et al., 2016) of the R statistical software. In the food web graphic, the bottom bars represent the insect hosts and the top bars represent parasitoid species. The width of the bars is a proportional representation of the host and parasitoid species abundances.

RESULTS

Population Genetic Structure

Microsatellite markers were used to test whether populations of *H. didymator* attacking noctuid larvae correspond to a single species or are subdivided into several genetically differentiated taxa.

Most loci were at HWE in all tested populations (see **Supplemental Table 2**) suggesting a random mating between individuals and a low frequency of null alleles at these loci. Analyses of genetic disequilibrium between the 14 loci indicate that, except HD59 and HD90, they segregate independently from each other (see **Supplemental Table 3**)—hence, the information given by each locus on the population genetic structure is, with one exception, independent from each other.

The genetic differentiation between the 12 populations with at least 20 individuals (i.e., with enough power to test the occurrence of a genetic differentiation between them), although significantly different from zero, was very low. The Fst value overall populations and overall loci equaled 0.0068 and the pairwise Fst values ranged between -0.0113 and 0.0247 (see **Supplemental Table 4**). The most differentiated population was the population from Corsica (which emerged from *H. armigera* collected on alfalfa). The Fst values between this population and the 11 other populations varied between 0.0073 and 0.0247. The Fst values of all the other pairwise comparison, except one, was < 0.001 .

The overall genetic differentiation at the 4 Hdiv loci was higher than at the 10 HD loci (Fst = 0.0176 vs. 0.0031). The pairwise comparisons, showed that the higher differentiation of the Corsican population from the other populations was due to a higher level of differentiation at the Hdiv than at the HD loci. Indeed, overall Hdiv loci, Fst values between this

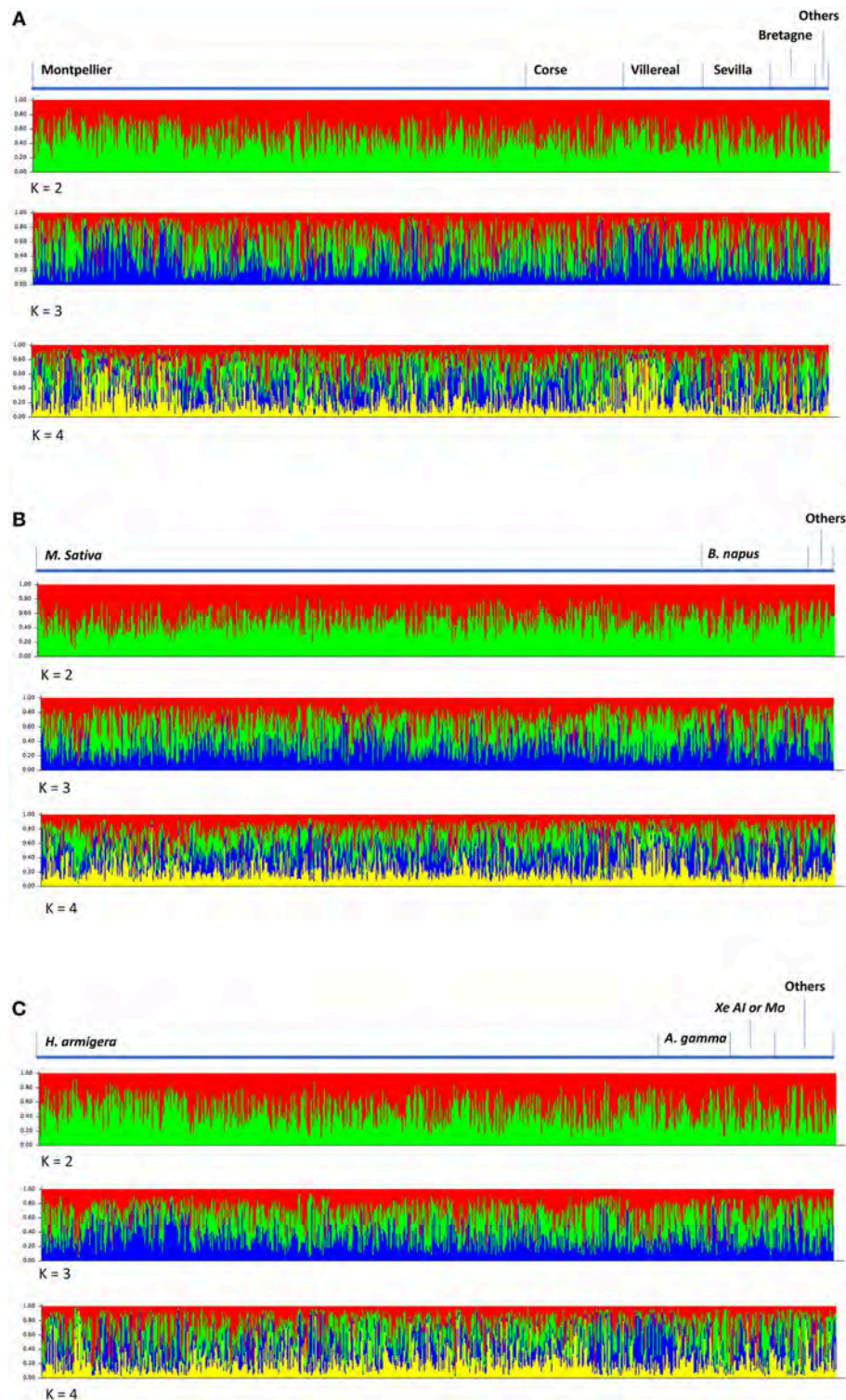


FIGURE 1 | *H. didymator* population structure from Bayesian STRUCTURE analyses using 14 microsatellite loci for different values of k . Analyses were carried on depending on wasp geographic origin (A), host plant (B) or host species (C).

population and the 11 other populations varied between 0.0376 and 0.0754, whereas the pairwise F_{ST} values overall HD loci were all < 0.0075 .

Accordingly, the results of Bayesian population structure analyses did not reveal any significant genetic differentiation, be when considering all loci, HD loci or Hdiv loci. The estimated

logarithm of likelihood for data analyzed with Structure was highest for $K = 1$ (Figure 1). Indeed, the LnP(D) plot only shows a strong drop off in model fit after $K = 2$. For $K > 1$, none of the 775 individuals could be assigned to a given cluster as each individual had a similar probability of belonging to each cluster. The ΔK also suggested only one discernible grouping was present within the data.

Finally, the AMOVA analyses showed that the variation between samples collected on different locations, different host plants and different insect host explained, respectively only 3.3, 0.8, and 0.2% of the total variance while the variation among individuals within samples and within individuals explained 9.8 and 85.9% of the total variation, respectively (Table 2). The analyses restricted to HD or Hdiv gave rather similar results (Table 2).

Hence, all samples of *H. didymator* collected on different insect hosts and/or on the different host plants appears to belong a single genetic cluster.

Parasitism Rates in Natural Conditions

Parasitism rates by *H. didymator* varied greatly in the different sampling sites (GLM, $\chi^2 = 590.57$, $df = 5$, $p < 0.001$) and years ($\chi^2 = 32.81$, $df = 4$, $p < 0.001$), ranging from 0 to almost 60% (Supplemental Table 1), and were significantly affected by both the host species ($\chi^2 = 520.39$, $df = 4$, $p < 0.001$) and the host plant ($\chi^2 = 465.77$, $df = 9$, $p < 0.001$). The parasitism rate was indeed higher on *H. armigera* (~10.4%) than on all the other host species collected during this survey (Figure 2A). The parasitism rates on *A. gamma* and *S. exigua* were very low (~1.5%) but significantly higher than on *S. littoralis* (0.2%).

Hyposoter didymator was also the parasitoid species that emerged the most frequently from *H. armigera* parasitized larvae collected in the fields, even though a whole cohort of other parasitoid species (including tachinids) emerged from this species (Figure 2B; Supplemental Table 5). Conversely, *H. didymator* appeared to be only occasional on *A. gamma*, which was mainly parasitized by braconids from the *Aleiodes* genus. Similarly, *S. littoralis* was mainly parasitized by braconids from the *Cotesia*, *Meteorus* and *Homolobus* genera and only in a few cases by *H. didymator* (Supplemental Table 5).

Regarding the host plant, *H. didymator* seemed to preferentially parasitize noctuids feeding on rapeseed than those feeding on other crops, with parasitism rate reaching 37% (Supplemental Table 6). Hosts were slightly more often parasitized on alfalfa (~6%) than on corn and cabbage (1–2%). Finally, noctuid larvae captured on chickpeas displayed the lowest parasitism rates (>0.5%). Regarding the host plant (Figure 2C), parasitism rates were higher when caterpillars were feeding on rapeseed (36.8%) than on alfalfa (5.9%) or cabbage and corn (1.5 and 1.7~2%, respectively).

Hence, although all samples of *H. didymator* apparently belong to a single species, this parasitoid probably does not parasitize noctuid larvae at random: indeed, parasitism rates observed in natural conditions strongly suggest host plant and insect host preferences.

TABLE 2 | AMOVA analysis results. HD loci are located within *Hyposoter didymator* genome excluding viral sequences; Hdiv loci are within integrated viral sequences.

Loci	Source	F-statistics	% variance	P-values
All loci	Between location	0.013	3.3	0.027
	Host plant within location	0.004	0.8	0.957
	Insect host within host plant	0.007	0.2	0.954
	Individuals within insect host	0.156	9.8	<0.0001
	Within individuals	0.294	85.9	<0.0001
HD loci	Between location	0.015	2.8	0.164
	Host plant within location	0.004	0.8	0.965
	Insect host within host plant	0.009	0.4	0.914
	Individuals within insect host	0.145	7.2	<0.0001
	Within individuals	0.352	88.8	<0.0001
Hdiv loci	Between location	0.055	5.4	0.008
	Host plant within location	0.008	0.6	0.876
	Insect host within host plant	0.009	0.6	0.885
	Individuals within insect host	0.237	8.6	<0.0001
	Within individuals	0.278	84.8	<0.0001

Host Plant Preference

Results obtained on plants placed within cages indicate a significant effect of the host plant on parasitism rates (GLMM, $\chi^2 = 67.98$, $df = 2$, $p < 0.001$). Parasitism rates of *H. armigera* larvae (Figure 3; Supplemental Table 7) were significantly higher on alfalfa (~82%) than on corn ($Z = 4.91$, $p < 0.001$) and chickpeas ($Z = 7.87$, $p < 0.001$). *H. armigera* larvae feeding on corn plants were also significantly more parasitized (~53%) than on chickpeas (~7%) ($Z = 5.11$, $p < 0.001$). The observed differences in parasitism rates among host plants are in agreement with the *H. didymator* host plant preference observed *in natura*.

DISCUSSION

Hyposoter didymator is currently described in the literature as a generalist parasitoid able to infest the larvae of several noctuid species in nature and to develop indifferently in a range of noctuid hosts in laboratory conditions. In one hand, our results were in line with this characteristic. In addition, we show that, at least in western Europe (France and Spain) and on the 7 insect hosts collected in this work, *H. didymator* populations are not subdivided in several genetically differentiated taxa but rather belong to a unique single taxon. This feature is somewhat different from other examples of insect species feeding on multiple hosts. Indeed, many insect species which were thought to be generalists turned out to actually be a complex of several genetically differentiated taxa more or less specialized on a specific host or set of hosts. This was true in many phytophagous insect genera like the moths *Ostrinia* (Malause et al., 2007; Bourguet et al., 2014) and *Plutella* (Perry et al., 2018), the flies *Ragoletis* (Feder et al., 1999; Xie et al., 2008) or the aphid *Acyrtosiphon pisum* (Peccoud and Simon, 2010). This feature has also been documented for several species of parasitoid tachinid flies (Smith et al., 2007). In the case of

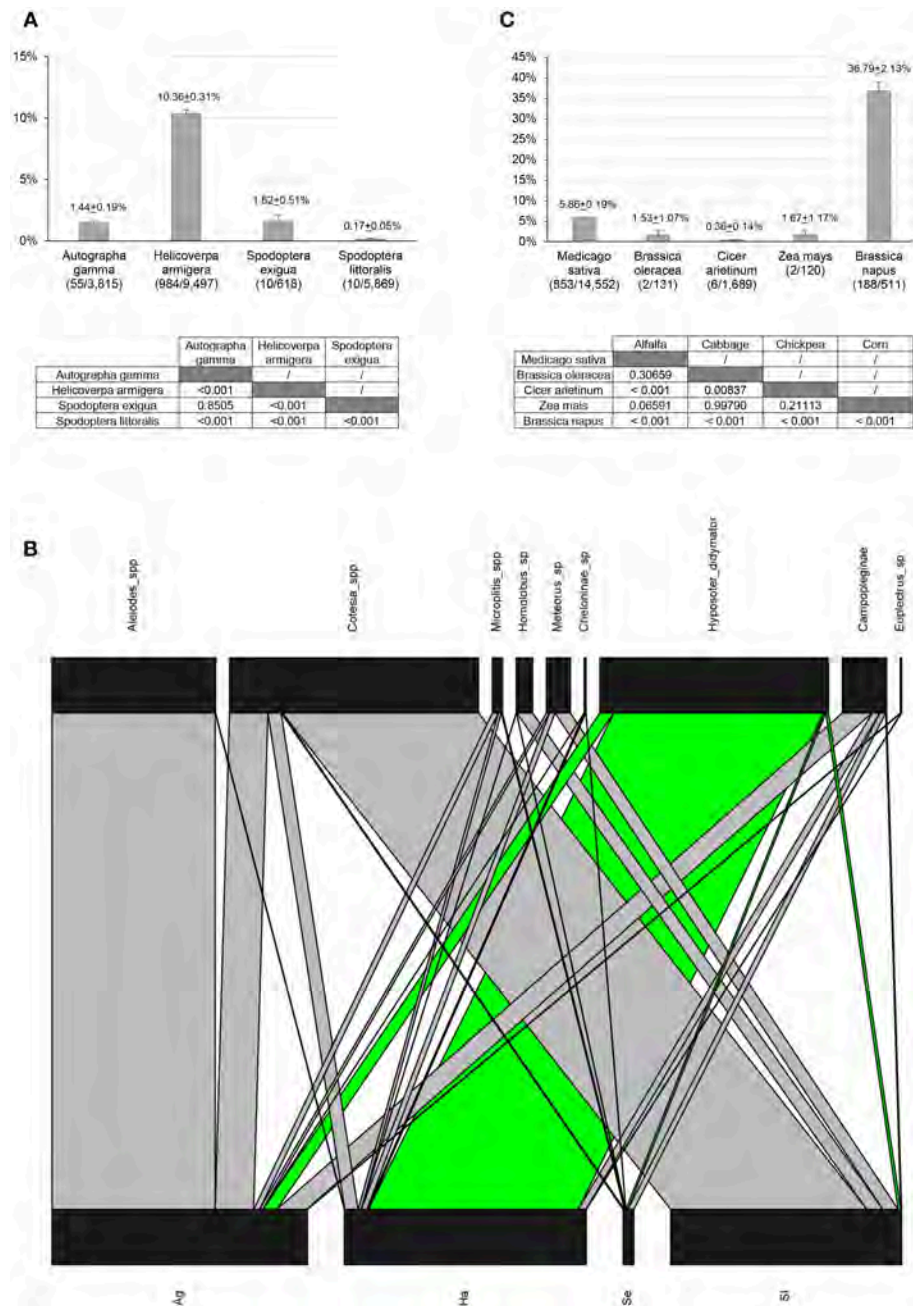
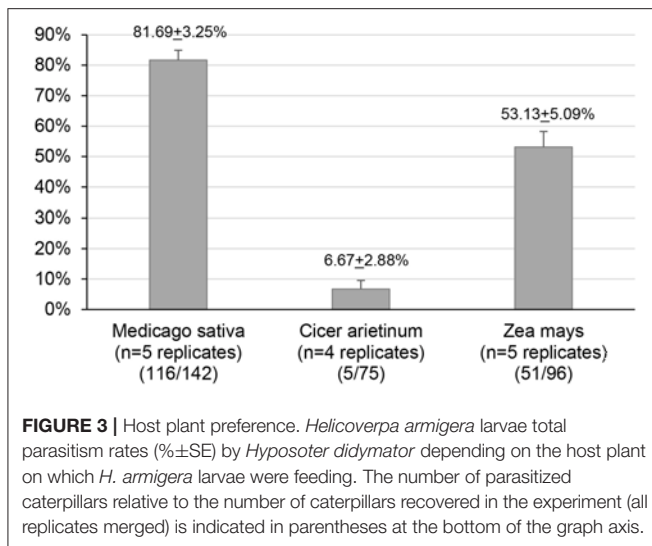


FIGURE 2 | Natural parasitism survey. **(A)** Parasitism rates (%±SE) by *H. didymator* for 4 noctuid species. Statistical analyses are indicated below the graph (parasitism rates pairwise comparisons). **(B)** Quantitative food-web network: larval parasitoid communities interacting with *H. didymator*. The bottom bars represent the host species (Ag= *Autographa gamma*, Ha= *Helicoverpa armigera*, Se= *Spodoptera exigua*, Sl= *Spodoptera littoralis*) whereas the top bars represent parasitoid species. The width of the bars is a proportional representation of species abundances. The host-parasitoid interactions involving *H. didymator* are depicted in green. **(C)** Parasitism rates (%±SE) by *H. didymator* for 5 different host plants. Statistical analyses are indicated below the graph (parasitism rates pairwise comparisons). For A and C: the number of parasitized caterpillars relative to the number of caterpillars collected in the fields is indicated in parentheses at the bottom of the graph axis; refer to the **Supplemental Table 1** for details on the collected samples.

Eupelmus vesicularis, a chalcid wasp long considered as one of the most polyphagous species, with more than 200 hosts from 4 insect orders, it was rather a problem of identification due to morphological similarities. Indeed, the species previously named *E. vesicularis* turned out to be actually a group of

at least five species (Fusu, 2017). Cryptic species have been also identified among braconid species parasitizing lepidopteran [e.g., *Cotesia melitaearum* and *C. acuminata* (Kankare et al., 2005) and *Cotesia flavipes* complex (Muirhead et al., 2012)] or aphids [e.g., *Aphelinus varipes* species complex (Heraty et al.,



2007) and *Aphidius matricariae* and *A. urticae* (Derocles et al., 2016)]. In the case of parasitoids, specialization is usually related to the host species use and there is often a lack of genetic structure related to host plant species (reviewed in Saskya van Nouhuys, 2016). As molecular studies progresses, it turns out that only a few parasitoid species appear to be true generalists and most parasitoid species have actually a narrower host range than originally assumed. However, some parasitoid species are described as generalists and may be able to switch regularly between different host species. For instance, the same genetic population of the egg parasitoid *Ooencyrtus pityocampae* can alternate seasonally between two hosts belonging to two different orders, the moth *Thaumetopoea wilkinsoni* and the bug *Stenozygum coloratum* (Samra et al., 2015).

Our results indicated that the overall genetic differentiation at the 4 Hdiv polydnavirus loci was higher than at the 10 HD nuclear loci. Polydnavirus proteins are directly subjected to host physiological resistance mechanisms, so polydnal viral genes were hypothesized to be potential good markers of parasitoid specialization (Whitfield et al., 2018). The role of polydnaviruses in parasitoid local adaptation has previously been reported for the braconid *Cotesia sesamiae*. Although *C. sesamiae* was initially considered as a generalist species developing on several lepidopteran hosts, two taxa of *C. sesamiae* were identified in Kenya that vary in their capacity to overcome the resistance of the lepidopteran host, a feature that was linked to allelic variations in viral genes (Branca et al., 2011; Kaiser et al., 2017; Gauthier et al., 2018). Although not differentiated in several genetically differentiated taxa, *H. didymator* probably does not parasitize all noctuid species indifferently and part of this specialization might be due, like *C. sesamiae*, to polydnaviruses, explaining a higher level of genetic differentiation at Hdiv loci.

Based on the results of the parasitism rates recorded in natural populations, we can hypothesize that *H. didymator* actually do have preferences for some insect hosts notably for *H. armigera*. Although not done here, due to problems in maintaining a *H.*

armigera strain in the laboratory, further studies on *H. didymator* life history traits on this host species compared to others will be necessary.

According to other studies, *H. didymator* displays some preferences to and has a better development—i.e., a higher fitness—in some noctuid species than others. For instance, the percent of adult emergence was higher in *H. armigera* compared to *S. littoralis* even using *H. didymator* adults emerged from parasitized *S. littoralis* (Hatem et al., 2016). In the same line, Reudler-Talsma et al. (2007) found a better larval development and a bigger adult size when *H. didymator* parasitized *C. chalcites* compared to *S. exigua*. Differences in life history traits and therefore in fitness on different hosts is a classical feature in parasitoid species. Such differences have been reported in several braconid species: *Psytallia cosyrae* (Mohamed et al., 2003), *Cotesia glomerata* (Harvey, 2000), *Bracon hebetor* (Ghimire and Phillips, 2010), or *Aphidius ervi* (Velasco-Hernández et al., 2017). Similarly, the ichneumonid *Venturia canescens* that emerged from *Ephestia kuehniella* were larger compared to those that emerged from *Plodia interpunctella* (Jones et al., 2015). Parasitoids develop inside a single host which provides their exclusive nutritional and physiological environment. Therefore, parasitoid fitness is closely linked to the innate host quality, which depends on the host species, size, developmental stage and on the plant on which it feeds (Ode, 2006).

Overall, our findings are in agreement with previous results suggesting that *H. armigera* is indeed a preferential host of *H. didymator*. For instance, in Spain, although some other parasitoid wasp species were detected, it was the parasitic complex of *H. didymator*—*Cotesia kazak* that parasitized more than 95% of *H. armigera* larvae in tomato crops (Torres-Vila et al., 2000). Similar results were obtained in Greece and Bulgaria (Carl, 1978). In Israel, *H. didymator* is similarly the most abundant parasitoid of *H. armigera* populations infesting cotton (Bar et al., 1979). *H. didymator* distribution covers Europe, and is not reported in Africa, except for Tunisia (<https://cran.r-project.org/web/packages/bipartite/bipartite.pdf>). The cotton bollworm *H. armigera* is an indigenous species for Africa and present in a large part of Europe (<https://gd.eppo.int>), where a single species is described (Colvin et al., 1994) although the population structure is still poorly resolved for this pest (Behere et al., 2007). Our and others' data indicate that *H. armigera* main parasitoid in southern Europe is *H. didymator* whereas in Africa, the bollworm is parasitized by other species (Van den Berg et al., 1988). Supplementary studies will be necessary to evaluate the evolutionary origin of the association between *H. didymator* and *H. armigera* in their common distribution area, and to decipher if *H. didymator* occurred in Europe before *H. armigera* and then switched to this new host after this moth established in European regions.

Finally, parasitism by *H. didymator* is also influenced by the host plant on which their hosts are feeding. In our survey in natural populations, noctuid larvae that fed on rapeseed and alfalfa were more frequently parasitized by *H. didymator* than larvae collected on other host plants (corn, chickpeas and some vegetables). Accordingly, in our controlled experiments performed in outdoor cages, parasitism rates of *H. armigera*

larvae by *H. didymator* were significantly influenced by the host plant on which *H. armigera* were deposited, with higher parasitism rates on alfalfa than on corn or chickpeas. Our results are in agreement with previous studies performed on six host plants (sorghum, sunflower, cotton, soybean, chickpea, and pigeon pea) showing that *H. didymator* parasitism was the lowest on chickpea and the highest on soybean (Murray et al., 1995). Influence of host plant on parasitism is also a classical feature in host-parasitoid interaction. For instance, using a similar cage experiment, there was no parasitism of *H. armigera* larvae by the braconid *Microplitis demolitor* on chickpeas, whereas 60–75% of parasitism was recorded on maize, cotton or soybean (Murray and Rynne, 1994). The host plant complex had also a strong influence on the level of parasitism of *Plutella xylostella* by *Diadegma mollipla* (Hym., Ichneumonidae) with a higher proportion larvae parasitized on peas (2.6%) than on cabbage (0.9%) (Rosbach et al., 2006). In the case of *H. didymator*, the influence of the host plant can be explained by the fact that host larvae are more accessible in alfalfa where they consume the leaves, than in corn, a plant where larvae tend to act as a borer and hide within the stem or the cobs. Alternatively, the results could be explained by differences in odors emitted by the plant species in response to larvae feeding damage. It is known that several parasitoid species use herbivore-induced plant volatiles (HIPVs) to find their hosts (Vinson, 1998; Mumm and Dicke, 2010). In the future, it will be necessary to compare behavior of *H. didymator* to assess if the wasp is more attracted to the alfalfa plant compared to corn or chickpeas and whether wasp attraction can be explained by differences in the blend of HIPVs among plant species. Low parasitism rates on chickpeas have been previously reported (Murray et al., 1995) and could be related to the production of acidic exudates by the leaves which may be detrimental (repulsive) to the parasitoid. Overall, our results nonetheless suggest the existence of some plant-mediated specialization of *H. didymator* at the behavioral host location level.

In conclusion, *H. didymator* does parasitize larvae of several noctuid species feeding on numerous host plants. This polyphagy did not trigger any genetic differentiation at least here in the Western European populations of this wasp. Unlike many species which are in fact a complex of several subdivided populations specialized on different set of hosts, *H. didymator* sampled in natural populations in France and Spain belong to a unique taxon. This does not mean that this parasitoid is truly generalist, which parasitizes with the same level of efficacy all noctuid species. *H. didymator* rather appears to be specialized in some species and to occasionally attack other noctuid species on which it is probably maladapted. This might be explained by the ecology of *H. didymator*. The agricultural areas where *H. didymator* was collected are variable patchwork landscapes with many fields of different crops adjacent to each other and to natural areas, resulting in discrete habitat types. Hence, there may be large variability in host density and availability in *H. didymator* ecological habitat. In southern French regions, there are two main *H. armigera* flights and larvae of this pest are present from May until the end of October. However, in the spring *H. armigera* populations are low, and in alfalfa, they coexist with other a number of other

noctuid species (e.g., *A. gamma*). This ability to shift to host species others than *H. armigera*—even if they may be less suitable—may have been selected for as an adaptation to seasonal population collapses.

AUTHOR CONTRIBUTIONS

A-NV and DB managed the project and analyzed the data. MF managed the insect collections with the help of EV-O, VJ, LM, and AP. PA performed the microsat analyses along with AP and VJ. The host plant preference experiment was done by MF, MV, SM, and MD. Statistical analyses were conducted by AC. The manuscript was written by A-NV and DB with the help of AC, LM, and AP.

FUNDING

This work has been provided by ANR (ABC-PaPoGen, ref. ANR-12-ADAP-0001) and by the Département Santé des Plantes et Environnement from INRA. Microsatellite data were produced through molecular genetic analysis technical facilities of the Labex Centre Méditerranéen de l'Environnement et de la Biodiversité.

ACKNOWLEDGMENTS

The authors thanks Romain Reinosa (BTS student), who participated to the outdoor cage experiment, as well as Clotilde Gibard and Gaétan Clabots from the DGIMI insectarium for the insects they have furnished. We thank the quarantine insect platform (PIQ), member of the Vectopole Sud network, for providing the infrastructure needed for pest insect experimentations. Many people helped us to collect noctuids. Special thanks to José Manuel Durán, Laboratorio de Producción y Sanidad Vegetal, Sevilla for his help. We are grateful to the Chambres d'Agriculture de Corse, Bretagne and Var who had informed us on the presence of noctuids *in natura* and helped in finding the plots. Thanks to Ernesto Fuentes and Primitivo Caballero, Universidad Pública de Navarra who send us cocoons from Canarias. And many thanks to all the producers in France and Spain who allowed us to collect in their fields. Funding of the work has been provided by ANR (ABC-PaPoGen, ref. ANR-12-ADAP-0001) and by the Département Santé des Plantes et Environnement from INRA. Microsatellite data were produced through molecular genetic analysis technical facilities of the Labex Center Méditerranéen de l'Environnement et de la Biodiversité.

SUPPLEMENTARY MATERIAL

The Supplementary Material for this article can be found online at: <https://www.frontiersin.org/articles/10.3389/fevo.2019.00020/full#supplementary-material>

Supplemental Table 1 | List of samples collected in different localities in France and Spain. For each sampling are indicated the number of noctuid larvae collected, the number of noctuid larvae that survived once brought to the laboratory, the number of obtained parasitized larvae, and the parasitism rate (estimated as the number of parasitized larvae per number of larvae that survived).

Are also indicated the number of *H. didymator* (Hd) that have been used for genotyping using microsatellite markers (total and number of females). Some of the parasitoid genotyped emerged from cocoons found in the field, or were caught in the fields as adults (indicated by the mention "cocoons/adults found). Slash (/) indicates the samplings for which the exact number of noctuid larvae is not known. na, non-applicable.

Supplemental Table 2 | Results showing that all HD and Hddiv microsatellite loci were at Hardy-Weinberg Equilibrium (HWE). Analyses were performed using individuals emerged from *H. armigera* larvae collected on different locations and different host plants.

Supplemental Table 3 | Genetic disequilibrium analyses between the 14 HD and Hddiv microsatellite loci.

Supplemental Table 4 | Pairwise FST values for all, HD and Hddiv loci, considering different locations, host plants and noctuid host species. Xe, Al or Mo: *Xylena exsoleta*, *Agrochola lychnidis*, or *Mamestra oleracea*.

REFERENCES

- Antolin, M. F., Bjorksten, T. A., and Vaughn, T. T. (2006). Host-related fitness trade-offs in a presumed generalist parasitoid, *Diaeretiella rapae* (Hymenoptera: Aphidiidae). *Ecol. Entomol.* 31, 242–254. doi: 10.1111/j.1365-2311.2006.00769.x
- Audiot, P., Jouan, V., Frayssinet, M., Volkoff, A. N., and Bourguet, D. (2014). Isolation and characterization of microsatellites in the endoparasitic ichneumonid wasp carrying a polydnavirus *Hyposoter didymator*. *Conserv. Genet. Resour.* 6, 21–23. doi: 10.1007/s12686-013-0036-0
- Bar, D., Gerling, D., and Rossler, Y. (1979). Bionomics of the principal natural enemies attacking *Heliothis armigera* in cotton fields in Israel. *Environ. Entomol.* 8, 468–474. doi: 10.1093/ee/8.3.468
- Behere, G. T., Tay, W. T., Russell, D. A., Heckel, D. G., Appleton, B. R., Kranthi, K. R., et al. (2007). Mitochondrial DNA analysis of field populations of *Helicoverpa armigera* (Lepidoptera: Noctuidae) and of its relationship to *H. zea*. *BMC Evol. Biol.* 7:117. doi: 10.1186/1471-2148-7-117
- Bourguet, D., Ponsard, S., Streiff, R., Meusnier, S., Audiot, P., Li, J., et al. (2014). 'Becoming a species by becoming a pest' or how two maize pests of the genus *Ostrinia* possibly evolved through parallel ecological speciation events. *Mol. Ecol.* 23, 325–342. doi: 10.1111/mec.12608
- Branca, A., LE Ru, B. P., Vavre, F., Silvain, J. F., and Dupas, S. (2011). Intraspecific specialization of the generalist parasitoid *Cotesia sesamiae* revealed by polyDNAvirus polymorphism and associated with different *Wolbachia* infection. *Mol. Ecol.* 20, 959–971. doi: 10.1111/j.1365-294X.2010.04977.x
- Bretz, F., Hothorn, T., and Westfall, P. H. (2010). *Multiple Comparisons Using R*. Boca Raton, FL: Chapman and Hall/CRC.
- Carl, K. P. (1978). *Heliothis Armigera: Parasite Survey and Introduction of Apanteles Kazak to New Zealand*. Commonwealth Institute of Biological Control, European Station, Delemont.
- Colvin, J., Cooter, R. J., and Patel, S. (1994). Laboratory mating behaviour and compatibility of *Helicoverpa armigera* (Lepidoptera: Noctuidae) originating from different geographical regions. *J. Econ. Entomol.* 87, 1502–1506. doi: 10.1093/jee/87.6.1502
- Crawley, M. J. (2007). *The R Book*. Chichester: John Wiley and Sons, Wiley Ltd. doi: 10.1002/9780470515075
- Derocles, S. A. P., Plantegenest, M., Rasplus, J. Y., Marie, A., Evans, D. M., Lunt, D. H., et al. (2016). Are generalist Aphidiinae (Hym. Braconidae) mostly cryptic species complexes? *Syst. Entomol.* 41, 379–391. doi: 10.1111/syen.12160
- Dorémus, T., Cousserans, F., Gyapay, G., Jouan, V., Milano, P., Wajnberg, E., et al. (2014). Extensive transcription analysis of the *Hyposoter didymator* Ichnovirus genome in permissive and non-permissive Lepidoptera host species. *PLoS ONE* 9:e104072. doi: 10.1371/journal.pone.0104072
- Dormann, C. F., Fründ, J., Blüthgen, N., and Gruber, B. (2016). *Package 'Bipartite': Visualizing Bipartite Networks and Calculating Some Ecological Indices*. Available online at: <http://www.catalogueoflife.org/col/details/database/id/68>
- Earl, D. A., and vonHoldt, B. M. (2012). STRUCTURE HARVESTER: a website and program for visualizing STRUCTURE output and implementing the Evanno method. *Conserv. Genet. Resour.* 4, 359–361. doi: 10.1007/s12686-011-9548-7
- Evanno, G., Regnaut, S., and Goudet, J. (2005). Detecting the number of clusters of individuals using the software STRUCTURE: a simulation study. *Mol. Ecol.* 14, 2611–2620. doi: 10.1111/j.1365-294X.2005.02553.x
- Excoffier, L., Smouse, P. E., and Quattro, J. M. (1992). Analysis of molecular variance inferred from metric distances among DNA haplotypes: application to human mitochondrial DNA restriction data. *Genetics* 131, 479–491.
- Feder, J. L., Williams, S. M., Berlocher, S. H., McPherson, B. A., and Bush, G. L. (1999). The population genetics of the apple maggot fly, *Rhagoletis pomonella*, and the snowberry maggot, *R. zephyria*. Implications for models of sympatric speciation. *Entomol. Exp. Appl.* 90, 9–24. doi: 10.1046/j.1570-7458.1999.00419.x
- Folmer, O., Black, M., Hoeh, W., Lutz, R., and Vrijenhoek, R. (1994). DNA primers for amplification of mitochondrial cytochrome c oxidase subunit I from diverse metazoan invertebrates. *Mol. Mar. Biol. Biotechnol.* 3, 294–299.
- Fontaine, M. C., Baird, S. J., Piry, S., Ray, N., Tolley, K. A., Duke, S., et al. (2007). Rise of oceanographic barriers in continuous populations of a cetacean: the genetic structure of harbour porpoises in Old World waters. *BMC Biol.* 25, 5–30. doi: 10.1186/1741-7007-5-30
- Fusu, L. (2017). An integrative taxonomic study of European *Eupelmus* (*Macroneura*) (Hymenoptera: Chalcidoidea: Eupelmidae), with a molecular and cytogenetic analysis of *Eupelmus* (*Macroneura*) *vesicularis*: several species hiding under one name for 240 years. *Zool. J. Linn. Soc.* 181, 519–603. doi: 10.1093/zoolinnean/zlw021
- Gagic, V., Petrović-Obradović, O., Fründ, J., Kavallieratos, N. G., Athanassiou, C. G., Stary, P., et al. (2016). The effects of aphid traits on parasitoid host use and specialist advantage. *PLoS ONE* 11:e0157674. doi: 10.1371/journal.pone.0157674
- Gauthier, J., Gayral, P., Le Ru, B. P., Jancek, S., Dupas, S., Kaiser, L., et al. (2018). Genetic footprints of adaptive divergence in the bracovirus of *Cotesia sesamiae* identified by targeted re-sequencing. *Mol. Ecol.* 27, 2109–2123. doi: 10.1111/mec.14574
- Ghimire, M. N., and Phillips, T. W. (2010). Suitability of different lepidopteran host species for development of *Bracon hebetor* (Hymenoptera: Braconidae). *Environ. Entomol.* 39, 449–458. doi: 10.1603/EN09213
- Godfray, H. C. J. (1994). *Parasitoids Behavioral and Evolutionary Ecology Editions*. Princeton, NJ: Princeton University Press.
- Goudet, J. (2005). HIERFSTAT, a package for R to compute and test hierarchical F-statistics. *Mol. Ecol.* 5, 184–186. doi: 10.1111/j.1471-8286.2004.00828.x
- Harvey, J. A. (2000). Dynamic effects of parasitism by an endoparasitoid wasp on the development of two host species: implications for host quality and parasitoid fitness. *Ecol. Entomol.* 25, 267–278. doi: 10.1046/j.1365-2311.2000.00265.x
- Harvey, J. A. (2005). Factors affecting the evolution of development strategies in parasitoid wasps: the importance of functional constraints and incorporating complexity. *Entomol. Exp. Appl.* 117, 1–13. doi: 10.1111/j.1570-7458.2005.00348.x

- Harvey, J. A., Ximénez de Embún, M. G., Bukovinszky, T., and Gols, R. (2012). The roles of ecological fitting, phylogeny and physiological equivalence in understanding realized and fundamental host ranges in endoparasitoid wasps. *J. Evol. Biol.* 25, 2139–2148. doi: 10.1111/j.1420-9101.2012.02596.x
- Hatem, A. E., Shawer, D., and Vargas Osuna, E. (2016). Parasitism and Optimization of *Hyposoter didymator* (Hymenoptera: Ichneumonidae) Rearing on *Spodoptera littoralis* and *Helicoverpa armigera* (Lepidoptera: Noctuidae). *J. Econ. Entomol.* 109, 1058–1063. doi: 10.1093/jee/tow028
- Hebert, P. D., Cywinska, A., Ball, S. L., and DeWaard, J. R. (2003). Biological identifications through DNA barcodes. *Proc. R. Soc.* 270, 313–321. doi: 10.1098/rspb.2002.2218
- Heraty, J. M., Woolley, J. B., Hopper, K. R., Hawks, D. L., Kim, J. W., and Buffington, M. (2007). Molecular phylogenetics and reproductive incompatibility in a complex of cryptic species of aphid parasitoids. *Mol. Phylogenet. Evol.* 45, 480–493. doi: 10.1016/j.ympev.2007.06.021
- Hubisz, M. J., Falush, D., Stephens, M., and Pritchard, J. K. (2009). Inferring weak population structure with the assistance of sample group information. *Mol. Ecol. Resour.* 9, 1322–1332. doi: 10.1111/j.1755-0998.2009.02591.x
- Jones, T. S., Bilton, A. R., Mak, L., and Sait, S. M. (2015). Host switching in a generalist parasitoid: contrasting transient and transgenerational costs associated with novel and original host species. *Ecol. Evol.* 5, 459–465. doi: 10.1002/ece3.1333
- Kaiser, L., Dupas, S., Branca, A., Herniou, E. A., Clarke, C. W., Capdevielle-Dulac, C., et al. (2017). The *Cotesia sesamiae* story: Insight into host-range evolution in a Hymenoptera parasitoid and implication for its use in biological control programs. *Genetica* 145, 455–468. doi: 10.1007/s10709-017-9989-3
- Kankare, M., Stefanescu, C., van Nouhuys, S., and Shaw, M. R. (2005). Host specialization by *Cotesia* wasps (Hymenoptera: Braconidae) parasitising species-rich Melitaeini (Lepidoptera: Nymphalidae) communities in north-eastern Spain. *Biol. J. Lin. Soc.* 86, 45–65. doi: 10.1111/j.1095-8312.2005.00523.x
- Lei, G. C., and Hanski, I. (1998). Spatial dynamics of two competing specialist parasitoids in a host metapopulation. *J. Anim. Ecol.* 67, 422–433. doi: 10.1046/j.1365-2656.1998.00204.x
- Loxdale, H. D., Lushai, G., and Harvey, J. A. (2011). The evolutionary improbability of ‘generalism’ in nature, with special reference to insects. *Biol. J. Linn. Soc.* 103, 1–18. doi: 10.1111/j.1095-8312.2011.01627.x
- Malause, T., Dalecky, A., Ponsard, S., Audiot, P., Streiff, R., Chaval, Y., et al. (2007). Genetic structure and gene flow in French populations of two *Ostrinia* taxa: host races or sibling species? *Mol. Ecol.* 16, 4210–4222. doi: 10.1111/j.1365-294X.2007.03457.x
- Mohamed, S. A., Overholt, W. A., Wharton, R. A., Lux, S. A., and Eltoum, E. M. (2003). Host specificity of *Psytalia cosyrae* (Hymenoptera: Braconidae) and the effect of different host species on parasitoid fitness. *Biol. Control* 28, 155–163. doi: 10.1016/S1049-9644(03)00099-9
- Muirhead, K. A., Murphy, N. P., Sallam, N., Donnellan, S. C., and Austin, A. D. (2012). Phylogenetics and genetic diversity of the *Cotesia flavipes* complex of parasitoid wasps (Hymenoptera: Braconidae), biological control agents of lepidopteran stemborers. *Mol. Phylogenet. Evol.* 63, 904–914. doi: 10.1016/j.ympev.2012.03.003
- Mumm, R., and Dicke, M. (2010). Variation in natural plant products and the attraction of bodyguards involved in indirect plant defense. *Can. J. Zool.* 88, 628–667. doi: 10.1139/Z10-032
- Murray, D. A. H., and Rynne, K. P. (1994). Effect of host plant on parasitism of *Helicoverpa armigera* (Lep.: Noctuidae) by *Microplitis demolitor* (Hym.: Braconidae). *Entomophaga* 39, 251–255. doi: 10.1007/BF02373029
- Murray, D. A. H., Rynne, K. P., Winterton, S. L., Bean, J. A., and Lloyd, R. J. (1995). Effect of host plant on parasitism of *Helicoverpa armigera* (Hubner) (Lepidoptera: Noctuidae) by *Hyposoter didymator* thunberg (Hymenoptera: Ichneumonidae) and *Cotesia kazak* (Telenga) (Hymenoptera: Braconidae). *J. Aust. Ent. Soc.* 34, 71–73. doi: 10.1111/j.1440-6055.1995.tb01284.x
- Ode, P. J. (2006). Plant chemistry and natural enemy fitness: effects on herbivore and natural enemy interactions. *Annu. Rev. Entomol.* 51, 163–185. doi: 10.1146/annurev.ento.51.110104.151110
- Peccoud, J., and Simon, J. C. (2010). The pea aphid complex as a model of ecological speciation. *Ecol. Entomol.* 35, 119–130. doi: 10.1111/j.1365-2311.2009.01147.x
- Perry, K. D., Baker, G. J., Powis, K. J., Kent, J. K., Ward, C. M., and Baxter, S. W. (2018). Cryptic *Plutella* species show deep divergence despite the capacity to hybridize. *BMC Evol. Biol.* 2018:77. doi: 10.1186/s12862-018-1183-4
- Pichon, A., Bezier, A., Urbach, S., Aury, J. M., Jouan, V., Ravallec, M., et al. (2015). Recurrent DNA virus domestication leading to different parasite virulence strategies. *Sci. Adv.* 1:e1501150. doi: 10.1126/sciadv.1501150
- Poirié, M., Colinet, D., and Gatti, J. L. (2014). Insights into function and evolution of parasitoid wasp venoms. *Curr. Opin. Insect Sci.* 6, 52–60. doi: 10.1016/j.cois.2014.10.004
- Poitout, S., Bues, R., and Le Rumeur, C. (1972). Elevage Sur Milieu Artificiel Simple de deux Noctuelles Parasites du coton *Earias insulana* et *Spodoptera littoralis*. *Ent. Exp. and Appl.* 15, 341–350. doi: 10.1111/j.1570-7458.1972.tb00219.x
- Pritchard, J. K., Stephens, M., and Donnelly, P. (2000). Inference of population structure using multilocus genotype data. *Genetics* 155, 945–959.
- R Core Team (2015). *R: A Language and Environment for Statistical Computing*. R Foundation for statistical computing, Vienna.
- Reudler-Talsma, J. H., Elzinga, J. A., Harvey, J. A., and Biere, A. (2007). Optimum and maximum host sizes at parasitism for the endoparasitoid *Hyposoter didymator* (Hymenoptera: Ichneumonidae) differ greatly between two host species. *Environ. Entomol.* 36, 1048–1053. doi: 10.1093/ee/36.5.1048
- Rossbach, A., Löhr, B., and Vidal, S. (2006). Host shift to peas in the diamondback moth *Plutella xylostella* (Lepidoptera: Plutellidae) and response of its parasitoid *Diadegma mollipla* (Hymenoptera: Ichneumonidae). *Bull. Entomol. Res.* 96, 413–419. doi: 10.1079/BER2006445
- Rousset, F. (2008). GENEPOP'007: a complete re-implementation of the GENEPOP software for windows and linux. *Mol. Ecol. Resour.* 8, 103–106. doi: 10.1111/j.1471-8286.2007.01931.x
- Samra, S., Ghanim, M., Protasov, A., Branco, M., and Mendel, Z. (2015). Genetic diversity and host alternation of the egg parasitoid *Ooencyrtus pityocampae* between the pine processionary moth and the Caper Bug. *PLoS ONE* 10:e0122788. doi: 10.1371/journal.pone.0122788
- Sertkaya, E., and Bayram, A. (2005). Parasitoid community of the loyeyi leaf worm *Mythimna (Acantholeucania) loyeyi*: Novel host-parasitoid associations and their efficiency in the eastern Mediterranean region of Turkey. *Phytoparasitica* 33, 441–449. doi: 10.1007/BF02981393
- Smith, M. A., Wood, D. M., Janzen, D. H., Hallwachs, W., and Hebert, P. D. N. (2007). DNA barcodes affirm that 16 species of apparently generalist tropical parasitoid flies (Diptera, Tachinidae) are not all generalists. *Proc. Natl. Acad. Sci. U.S.A.* 104, 4967–4972. doi: 10.1073/pnas.0700050104
- Strand, M. R., and Burke, G. R. (2015). Polydnnaviruses: from discovery to current insights. *Virology* 479–480, 393–402. doi: 10.1016/j.virol.2015.01.018
- Tamò, C., Ricard, I., Held, M., Davison, A. C., and Turlings, T. C. J. (2006). A comparison of naive and conditioned responses of three generalist endoparasitoids of lepidopteran larvae to host-induced plant odours. *Anim. Behav.* 56, 205–220. doi: 10.1163/15707560677304177
- Torres-Vila, L. M., Rodríguez-Molina, M. C., Palo, E., Del Estal, P., and y Lacasa, A. (2000). El complejo parasitario larvario de *Helicoverpa armigera* Hübner sobre tomate en las Vegas del Guadiana (Extremadura). *Bol. San. Veg. Plagas* 26, 323–333.
- Van den Berg, H., Waage, J. K., and Cock, M. J. W. (1988). *Natural enemies of Helicoverpa armigera in Africa: A Review*. Wallingford, CAB International.
- van Nouhuys, S. (2016). Diversity, population structure, and individual behavior of parasitoids as seen using molecular markers. *Curr. Opin. Insect Sci.* 14, 94–99. doi: 10.1016/j.cois.2016.02.006
- van Veen, F. J. F., Müller, C. B., Pell, J. K., and Godfray, H. C. J. (2008). Food web structure of three guilds of natural enemies: predators, parasitoids and pathogens of aphids. *J. Anim. Ecol.* 77, 191–200. doi: 10.1111/j.1365-2656.2007.01325.x
- Velasco-Hernández, M. C., Desneux, N., Ramírez-Martínez, M. M., Cicero, L., and Ramirez-Romero, R. (2017). Host species suitability and instar preference of *Aphidius ervi* and *Aphelinus abdominalis*. *Entomol. Gen.* 36, 347–367. doi: 10.1127/entomologia/2017/0500

- Vinson, S. B. (1998). The general host selection behavior of parasitoid Hymenoptera and a comparison of initial strategies utilized by larvaphagous and oophagous species. *Biol. Control* 11, 79–96. doi: 10.1006/bcon.1997.0601
- Weir, B. S., and Cockerham, C. (1984). Estimating F-Statistics for the analysis of population structure. *Evolution* 38, 1358–1370.
- Whitfield, J. B., Austin, A. D., and Fernandez-Triana, J. L. (2018). Systematics, biology, and evolution of microgastrine parasitoid wasps. *Annu. Rev. Entomol.* 63, 389–406. doi: 10.1146/annurev-ento-020117-043405
- Xie, X., Michel, A. P., Schwarz, D., Rull, J., Velez, S., Forbes, A. A., et al. (2008). Radiation and divergence in the *Rhagoletis pomonella* species group: inferences from DNA sequence data. *J. Evol. Biol.* 21, 900–913. doi: 10.1111/j.1420-9101.2008.01507.x

Conflict of Interest Statement: The authors declare that the research was conducted in the absence of any commercial or financial relationships that could be construed as a potential conflict of interest.

Copyright © 2019 Frayssinet, Audiot, Cusumano, Pichon, Malm, Jouan, Vabre, Malavieille, Delalande, Vargas-Osuna, Bourguet and Volkoff. This is an open-access article distributed under the terms of the Creative Commons Attribution License (CC BY). The use, distribution or reproduction in other forums is permitted, provided the original author(s) and the copyright owner(s) are credited and that the original publication in this journal is cited, in accordance with accepted academic practice. No use, distribution or reproduction is permitted which does not comply with these terms.