



HAL
open science

Estimating the Center of Mass and the Angular Momentum Derivative for Legged Locomotion - A recursive approach

François Bailly, Justin Carpentier, Mehdi Benallegue, Bruno Watier, Philippe Souères

► **To cite this version:**

François Bailly, Justin Carpentier, Mehdi Benallegue, Bruno Watier, Philippe Souères. Estimating the Center of Mass and the Angular Momentum Derivative for Legged Locomotion - A recursive approach. IEEE Robotics and Automation Letters, 2019, 4 (4), pp.4155-4162. 10.1109/LRA.2019.2931200 . hal-02058890v2

HAL Id: hal-02058890

<https://hal.science/hal-02058890v2>

Submitted on 12 Jul 2019

HAL is a multi-disciplinary open access archive for the deposit and dissemination of scientific research documents, whether they are published or not. The documents may come from teaching and research institutions in France or abroad, or from public or private research centers.

L'archive ouverte pluridisciplinaire **HAL**, est destinée au dépôt et à la diffusion de documents scientifiques de niveau recherche, publiés ou non, émanant des établissements d'enseignement et de recherche français ou étrangers, des laboratoires publics ou privés.

Estimating the Center of Mass and the Angular Momentum Derivative for Legged Locomotion — A recursive approach

François Bailly^{a,*}, Justin Carpentier^{b,c}, Mehdi Benallegue^d, Bruno Watier^{a,e} and Philippe Souères^a

Abstract—Estimating the center of mass position and the angular momentum derivative of legged systems is essential for both controlling legged robots and analyzing human motion. In this paper, a novel recursive approach to concurrently and accurately estimate these two quantities together is introduced. The proposed method employs kinetic and kinematic measurements from classic sensors available in robotics and biomechanics, to effectively exploits the accuracy of each measurement in the spectral domain. The soundness of the proposed approach is first validated on a simulated humanoid robot, where ground truth data is available, against an Extend Kalman Filter. The results demonstrate that the proposed method reduces the estimation error on the center of mass position with regard to kinematic estimation alone, whereas at the same time, it provides an accurate estimation of the derivative of angular momentum. Finally, the effectiveness of the proposed method is illustrated on real measurements, obtained from walking experiments with the HRP-2 humanoid robot.

Index Terms—Humanoid and Bipedal Locomotion; Humanoid Robots.

I. INTRODUCTION

The precise estimation of both the center of mass (CoM) position and the angular momentum derivative is an important issue for legged robots control [1], [2]. It also has various applications in humans for motion analysis in biomechanics or for disorders diagnosis in medicine. The main challenge of this estimation problem lies in the fact that these two quantities are not directly measurable, and depend at the same time on fixed parameters (e.g. mass distribution of the system, dimensions of the limbs, etc.) as well as on varying quantities (e.g. joints configurations).

A. State of the art

In order to estimate the CoM position, several methods exploiting different sources of information are commonly applied [3], [4], [5]. They can be grouped into two broad categories, namely the *kinematic methods* which only exploit kinematic measurements and the *kinetic methods* which estimate the CoM position from kinetic signals. In the following, estimation methods from both robotics and

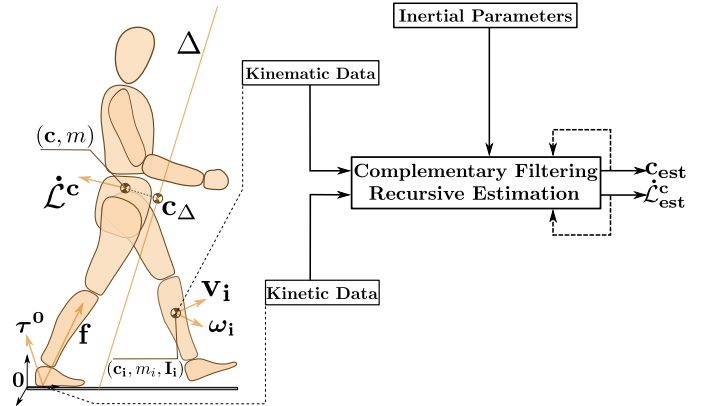


Fig. 1: Illustration of the measurement apparatus. The several physical quantities involved in the estimation framework are displayed, as well as a simplified sketch of the estimation algorithm.

biomechanics are reviewed, showing that the goals and means of the two disciplines are very similar on this topic.

Kinematic methods are certainly the most popular ones. They assume that the system is composed of rigid links and articulations, which is reasonable for non-soft robots, but more questionable in the context of humans [6]. The masses and joint angles required for the kinematic estimation of the CoM can be either obtained from CAD (Computer-Aided Design) data and encoders measurements in robotics, whereas they can be obtained from anthropometric tables coupled with motion capture (MoCap) systems in biomechanics [7]. Then, the CoM position is function of a weighted sum accounting for both the mass distribution and the position of each segment's CoM. It is worth noticing that kinematic methods are subject to noises of various types, mostly due to uncertainties about the mass distribution of the system (discrepancy between the CAD model and the real robot, statistical anthropometric tables in humans), and to soft tissue artifacts [6].

As for kinetic methods, the estimation of the CoM position is achieved by only measuring either the so-called Zero Moment Point (ZMP) [8] or directly from the contact forces measurements [3], [9]. For instance, in humanoid robotics, the robot is often modeled as a linear inverted pendulum. Under this assumption, the CoM position can be directly estimated from the mathematical relationship linking the ZMP to the CoM [10], [11]. These approaches then assume that the CoM trajectory can be assimilated to the oscillations of a linear inverted pendulum, and the acceptable range of motion of

^a LAAS-CNRS, 7 Avenue du Colonel Roche, F-31400 Toulouse, France

^b Département d'informatique de l'ENS, École normale supérieure, CNRS, PSL Research University, 75005 Paris, France

^c INRIA, France

^d Humanoids Research Group, AIST, Tsukuba, Japan

^e University of Toulouse, UPS, LAAS, F-31400 Toulouse, France

*corresponding author: fbailly@laas.fr

such methods is mostly limited to a neighborhood of the balance configuration. In [12], it was proposed to filter the ZMP trajectory with a low-pass filter to estimate the horizontal components of the CoM. The accuracy of this approach was limited to slow movements. Finally, by assuming a constant-height CoM, performing a double integration of external forces together with an estimation of the angular momentum derivative expressed at the CoM, [13] and [14] have provided another way to estimate the horizontal components of the CoM. Some recent works have proposed to remove simplifying assumptions and to fuse kinetic and kinematic data through Extended Kalman Filtering (EKF) [9], [15]. Nevertheless, an important difficulty when estimating the CoM position from forces/moments data, comes from the fact that this quantity is *only partially observable* [16]. This means that at each time instant not all the components of the CoM can be observed, and the full observability can only be recovered by exploiting the correlation between the past sensor measurements, which requires to save these data in memory.

Concerning the estimation of the derivative of angular momentum, to the best of our knowledge, only kinematic estimation has been proposed in the literature [17], [18]. Such approaches are affected by the same limitations as the ones encountered in estimating the CoM position, regarding mass distribution errors, with additional uncertainties coming from the numerical derivation of segments poses. Kinetic data can also be used as suggested in [19], by exploiting the relation between the angular momentum and the external torques applied to the system. It should be noticed, however, that in most cases, the derivative of angular momentum is neglected for the sake of simplicity. For instance, this hypothesis was made in a previous work [16], where the authors relied on a complementary filter in the spectral domain, to merge both the kinematic and kinetic data in order to exclusively estimate the CoM position, assuming that the angular momentum derivative is negligible. Nevertheless, as it has been highlighted in [20], these time variations of the angular momentum are present and necessary in biped locomotion, making this assumption very restrictive.

B. Contributions

In this paper, we introduce a generic framework to simultaneously and accurately estimate both the CoM position and the derivative of angular momentum by exploiting the mathematical properties that link these two quantities (see Fig. 1 for a schematic overview of the proposed method). Compared to the previous approaches of the state of the art, the contributions of this paper are threefold:

- (i) We introduce a recursive algorithm in order to improve, over the iterations, the estimated CoM position from the estimated angular momentum derivative and vice-versa;
- (ii) Kinematic and kinetic data are complementary fused together for estimating the CoM (as in [16]) and to the best of our knowledge, for the first time the derivative of the angular momentum;
- (iii) The proposed method does not rely on any simplifying assumptions such as neglecting the derivative of the angular momentum (we provide an estimation for this

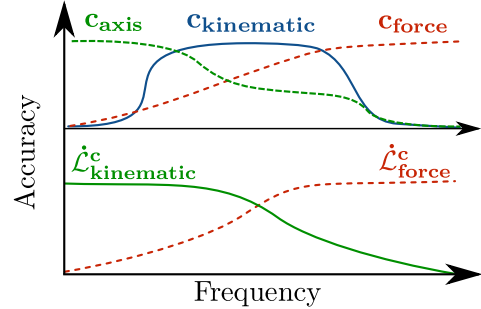


Fig. 2: Schematic representation of the spectral accuracy of the different input signals for the estimation of \mathbf{c} and $\dot{\mathbf{L}}^c$.

quantity), or assuming that the center of mass lies on a horizontal plane, therefore, our formulation is generic and allows one to work with any number of contacts, in any multi-contact scenario which are now common in robotics.

The consistency of the proposed approach is first validated on a simulated humanoid, by demonstrating the accuracy of our estimated quantities against ground truth data and against a state-of-the-art algorithm (EKF). Then, in order to illustrate its efficiency in experimental conditions, our approach is applied to a real dataset by analyzing a walking motion performed by the HRP-2 robot.

II. ESTIMATION ALGORITHM

In this section, we first recall how the position of the CoM (denoted by \mathbf{c}) and the angular momentum derivative expressed at the CoM (denoted by $\dot{\mathbf{L}}^c$) are linked together through the so-called Euler's equation of motion. Then, we identify the different sources of information which contribute to the estimation of $\dot{\mathbf{L}}^c$ and \mathbf{c} , and we explain how to fuse them by exploiting their level of accuracy in the spectral domain.

A. Link between the CoM and the angular momentum

Let m be the mass of the system, and \mathbf{c} , $\dot{\mathbf{c}}$ and $\ddot{\mathbf{c}}$ the CoM position, velocity and acceleration respectively. Let \mathbf{f} and $\boldsymbol{\tau}^0$ be the resulting forces and moment exerted on the system by the environment and expressed at the origin $\mathbf{0}$ of the world. They constitute the external contact wrench that can be translated at any other point of the space using the Varignon formula. According to the Euler's equations of motion, the angular momentum derivative at the CoM is equal to the moment of the external forces expressed at the CoM, yielding:

$$\dot{\mathbf{L}}^c = \boldsymbol{\tau}^0 + \mathbf{f} \times \mathbf{c} \quad (1)$$

Eq. (1) reveals the physical coupling between the two quantities we want to estimate, namely the CoM position \mathbf{c} and the angular momentum time derivative $\dot{\mathbf{L}}^c$.

B. Input measurements

Our estimation framework assumes that both the total mass m of the system and the gravitational acceleration $\mathbf{g} = (0, 0, -g)$ are known, with g the standard gravity value. These are rather reasonable assumptions since the mass is easily measurable from force sensors in stationary position and the gravity is precisely known. Using joints encoders or a MoCap

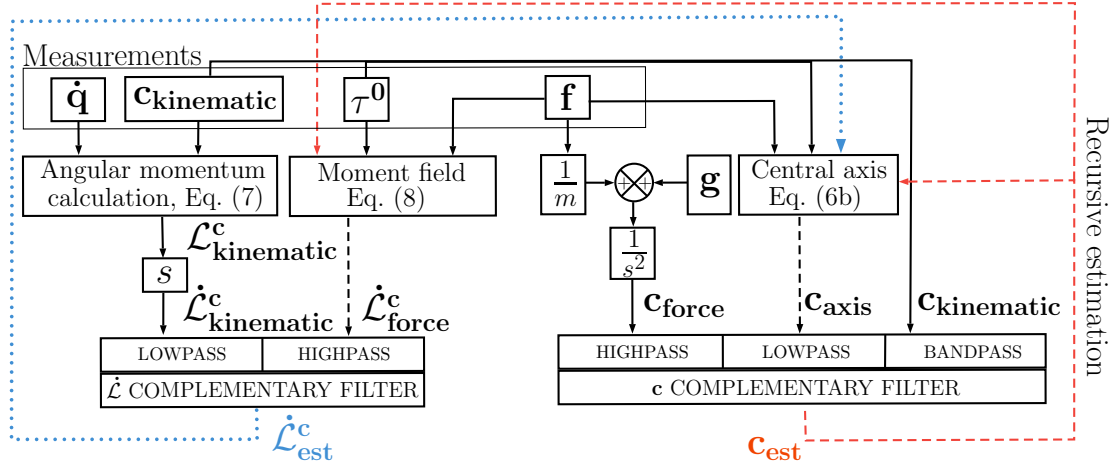


Fig. 3: Flow chart of the recursive complementary estimation framework, with s the Laplace variable. Dotted lines represent the update step of the algorithm. Complementary filtered components are summed in order to output \hat{L}^c_{est} and c_{est} , the estimates of \dot{L}^c and c respectively.

system and 6-D force measurement units, one can measure the kinematic and kinetic data related to the physical quantities of interest:

- the resulting wrench of contact (\mathbf{f} , $\boldsymbol{\tau}^0$) expressed at the origin, via the force sensors (embedded sensors, force plates in biomechanics, etc.);
- the position of the CoM, denoted by $\mathbf{c}_{kinematic}$, directly deduced from the kinematics or the MoCap system associated with the mass distribution of the system;
- the angular momentum at the CoM, denoted by $\mathcal{L}^c_{kinematic}$, which can be obtained from the angular velocities and the inertias of the different links.

C. Multi-source fusion for estimating the CoM position

This section explains how to compute and process the three different input signals that carry information about the position of the CoM. The spectral accuracy of each signal is illustrated in Fig. 2.

1) *From kinetic data:* The second Newton law states that:

$$\ddot{\mathbf{c}} = \frac{\mathbf{f}}{m} + \mathbf{g}. \quad (2)$$

By integrating twice the right hand side of this equation, one can obtain \mathbf{c}_{force} , the estimation of the center of mass from the contact forces, thanks to the information provided by the force sensors. However without the knowledge of integration constants (initial position and initial velocity), this method leads to a quadratic drift visible in the low and medium frequencies [16].

2) *From kinematic data:* Kinematic computations using either a model of the robot or reflective markers combined with anthropometric tables are usually used to estimate the CoM position. This source of data ($\mathbf{c}_{kinematic}$) suffers mainly from low-frequency biases due to modeling errors of the mass distribution. It can also be altered by the high frequency sensor noise due to the MoCap technology [21]. Then, the error between this signal and the real position of the CoM mostly lies in the low and high frequency domains.

3) *From the central axis of the contact wrench:* Considering the contact moment field, there exists one unique axis called the central axis of the contact wrench and denoted by Δ [22], [23], where the moment of contact forces is collinear to \mathbf{f} . The projection \mathbf{c}_{Δ} of the CoM \mathbf{c} onto Δ is given by:

$$\mathbf{c}_{\Delta} = \frac{\mathbf{f} \times \boldsymbol{\tau}^0 + (\mathbf{c} \cdot \mathbf{f})\mathbf{f}}{\|\mathbf{f}\|^2}, \quad (3)$$

where \cdot and \times denote the dot and cross products, respectively. This projection can be computed from the force and moment signals provided by the force/torque sensors and the current estimate of the CoM, denoted by \mathbf{c}_{est} as follows:

$$\mathbf{c}_{\Delta} = \frac{\mathbf{f} \times \boldsymbol{\tau}^0}{\|\mathbf{f}\|^2} + (\mathbf{c}_{est} \cdot \mathbf{n})\mathbf{n}, \quad (4)$$

where $\mathbf{n} = \frac{\mathbf{f}}{\|\mathbf{f}\|}$ is the normalized direction of \mathbf{f} . Knowing an estimate of \dot{L}^c , denoted by \dot{L}^c_{est} , and \mathbf{f} , and using the properties of the vector triple product, the difference between \mathbf{c} and \mathbf{c}_{Δ} can be computed as:

$$\mathbf{c} - \mathbf{c}_{\Delta} = \frac{\dot{L}^c_{est} \times \mathbf{f}}{\|\mathbf{f}\|^2}. \quad (5)$$

This leads to a third estimate of the CoM position that will be denoted by \mathbf{c}_{axis} and expressed as:

$$\mathbf{c}_{axis} = \mathbf{c}_{\Delta} + \frac{\dot{L}^c_{est} \times \mathbf{f}}{\|\mathbf{f}\|^2}, \quad (6a)$$

$$\mathbf{c}_{axis} = \frac{\mathbf{f} \times \boldsymbol{\tau}^0}{\|\mathbf{f}\|^2} + (\mathbf{c}_{est} \cdot \mathbf{n})\mathbf{n} + \frac{\dot{L}^c_{est} \times \mathbf{f}}{\|\mathbf{f}\|^2}. \quad (6b)$$

4) *Complementary filter of the CoM:* The theory of complementary filtering provides a simple and effective way to fuse different sources of information in the presence of noise. The idea is to filter each signal in the spectral domain in order to preserve it in the frequency bandwidth where the signal has the best accuracy. To this end, complementary filters have to be designed, requiring that the sum of their transfer functions is equal to one, maintaining the energy of the signal with zero phase modification [24]. In theoretical conditions, where the spectral distribution of the noise is perfectly known, this simple

Filters	Low-Pass	High-Pass	Band-Pass
CoM	$\frac{\omega_{l_c}^2}{s^2 + 2\zeta\omega_{l_c}s + \omega_{l_c}^2}$	$\frac{s^2}{s^2 + 2\zeta\omega_{h_c}s + \omega_{h_c}^2}$	$\frac{2\zeta\omega_{h_c}s^3 + [\omega_{h_c}^2 - \omega_{l_c}^2 + 4\zeta^2\omega_{h_c}\omega_{l_c}]s^2 + 2\zeta\omega_{l_c}\omega_{h_c}^2s}{s^4 + 2\zeta(\omega_{l_c} + \omega_{h_c})s^3 + [\omega_{l_c}^2 + \omega_{h_c}^2 + 4\zeta^2\omega_{l_c}\omega_{h_c}]s^2 + 2\zeta\omega_{l_c}\omega_{h_c}(\omega_{h_c} + \omega_{l_c})s + \omega_{l_c}^2\omega_{h_c}^2}$
$\dot{\mathcal{L}}^c$	$\frac{\omega_{l_c}^2}{s^2 + 2\zeta\omega_{l_c}s + \omega_{l_c}^2}$	$\frac{s^2 + 2\zeta\omega_{l_c}s}{s^2 + 2\zeta\omega_{l_c}s + \omega_{l_c}^2}$	-

TABLE I: Transfer functions of the complementary filters associated to the center of mass (first row) or the time derivative of the angular momentum (second row). s is the Laplace variable, ω_{l_c} and ω_{h_c} denote the low-cut and high-cut frequencies of the CoM filter, ω_{l_c} denotes the cutoff frequency of the $\dot{\mathcal{L}}^c$ filter. ζ is the damping ratio of the filters.

```

k ← 0
c_est[k] ← c_kinematic
L_est^c[k] ← L_kinematic^c
while (||Δc_est|| > ε and ||ΔL_est^c|| > ε) do
  {L_force^c[k+1], c_axis[k+1]} ← update(c_est[k], L_est^c[k])
  c_est[k+1] ← comFilter(c_force, c_axis[k+1], c_kinematic)
  L_est^c[k+1] ← amFilter(L_kinematic^c, L_force^c[k+1])
  Δc_est ← c_est[k+1] - c_est[k]
  ΔL_est^c ← L_est^c[k+1] - L_est^c[k]
k ← k + 1

```

Fig. 4: Recursive estimation algorithm. The **update()** function implements the computation of Eqs. (6b) and (8). The **comFilter()** and **amFilter()** functions computes the complementary filtering of \mathbf{c}_{est} and $\dot{\mathcal{L}}_{\text{est}}^c$ respectively. ϵ is a tolerance threshold to be chosen according to the desired convergence accuracy.

strategy is the optimal way to combine the signals without loss of information.

Similarly to [16], we rely on a complementary filtering approach to fuse the three signals, $\mathbf{c}_{\text{force}}$, $\mathbf{c}_{\text{kinematic}}$ and \mathbf{c}_{axis} , in order to retrieve an accurate estimate of the CoM position. Thus, a complementary filters consisting of a high-pass, a band-pass and a low-pass, as evident in Fig. 3 and Tab. I, is designed. First, we design the low-pass and high-pass transfer functions, with ω_{l_c} and ω_{h_c} their cutoff frequencies. The band-pass transfer function is then analytically deduced so that three transfer functions sum to 1.

D. Multi-source estimation of the angular momentum derivative

In this section, we explain how to compute and process the two input signals for estimating $\dot{\mathcal{L}}^c$ from kinematic and kinetic signals.

1) *From kinematic data:* When the angular and linear velocities of the segments and their inertia matrices are known, then the angular momentum of the system can be readily computed as:

$$\dot{\mathcal{L}}_{\text{kinematic}}^c = \sum_i \mathbf{I}_i \boldsymbol{\omega}_i + \overrightarrow{\mathbf{cc}}_i \times m_i \mathbf{v}_i, \quad (7)$$

where \mathbf{I}_i , $\boldsymbol{\omega}_i$, \mathbf{c}_i , m_i and \mathbf{v}_i denote the inertia matrix, angular velocity, CoM position, mass and relative velocity

of the i th segment respectively. The time derivative of this quantity provides an estimation of $\dot{\mathcal{L}}^c$ from this first source of information at the price of amplifying high frequency noise (see Fig. 2). Indeed, the gain of the derivative operator increases linearly with frequency, and consequently, high frequencies (where the signal to noise ratio is usually bad, due to sensor noise) are greatly amplified. Therefore, the output of the derivative operator needs to be low-pass filtered as sketched in Fig. 3.

2) *From the moment field properties:* The second source of information for the estimation of $\dot{\mathcal{L}}^c$, lies in Eq. (1):

$$\dot{\mathcal{L}}_{\text{force}}^c = \boldsymbol{\tau}^0 + \mathbf{f} \times \mathbf{c}, \quad (8)$$

and is provided by force sensors measurements with an estimation of \mathbf{c} .

3) *Complementary filter for the angular momentum variation quantity:* In the same way as before, complementary filtering is used to add both contributions to the estimation of $\dot{\mathcal{L}}^c$. In the Laplace domain, two complementary filters are designed (high-pass and low-pass, see Fig. 3 and Tab. I for details) such that their transfer functions sum to 1. To our knowledge, it is the first time that the estimation of $\dot{\mathcal{L}}^c$ is performed using both kinematic and kinetic data.

E. Recursive estimation of the CoM position and of the angular momentum derivative

The proposed recursive approach is motivated by the fact that the estimation of $\dot{\mathcal{L}}_{\text{force}}^c$ depends on an estimation of \mathbf{c} (see Eq. (8)) and that the estimation of \mathbf{c}_{axis} depends on an estimation of $\dot{\mathcal{L}}^c$ (see Eq. (6b)). Hence, the estimation accuracy of \mathbf{c} can be increased by refining the estimation of $\dot{\mathcal{L}}^c$, and vice versa. Fig. 4 depicts the recursive algorithm that lies at the core of the method. Finally, Fig. 3 illustrates a detailed diagram of the proposed estimation framework.

III. EXPERIMENTAL VALIDATION OF THE ESTIMATION FRAMEWORK

In this section, the efficiency of the estimation framework is first demonstrated on simulated data. In addition, an EKF-based estimator was implemented, as in [9], in order to compare both approaches. Then experimental data are processed to illustrate the performance of the proposed method on a real application scenario. In both cases, the estimation is performed recursively as sketched in Fig. 3.

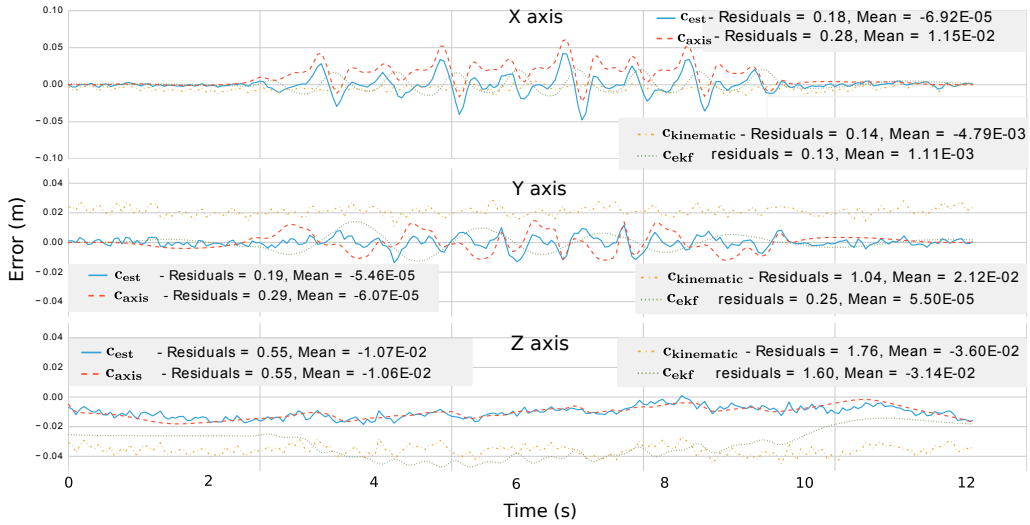


Fig. 5: *Simulation*. Time residuals of $c_{kinematic}$, c_{ekf} , c_{axis} and c_{est} after convergence of the recursive algorithm, for a horizontal walking motion of the HRP-2 robot in simulation. The 1-norm and the mean of the residuals are displayed.

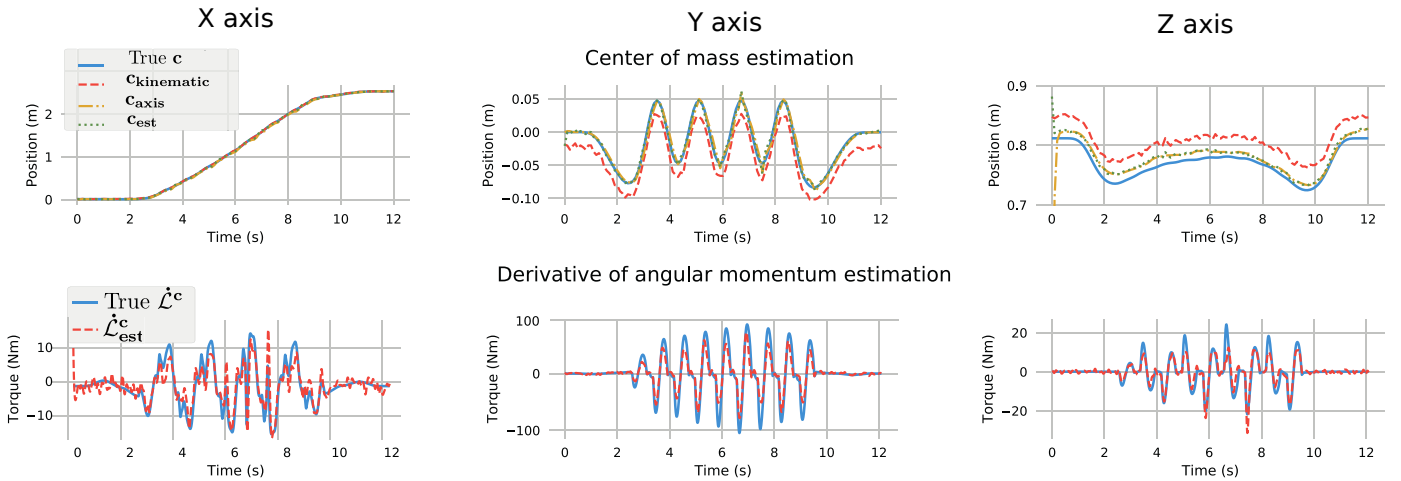


Fig. 6: *Simulation*. Estimation of c and \dot{L}^c for a horizontal walking motion of the HRP-2 robot in simulation. Top row: true c , $c_{kinematic}$, c_{axis} and c_{est} . Bottom row: \dot{L}_{est}^c and true \dot{L}^c .

A. Generation of ground truth and noisy measurements in simulation

Initially, a dynamically consistent walking motion has been simulated for a humanoid robot. Then, by adding artificial noise to the several quantities involved in the estimation framework (with noise values representative of classic robotics setups), we compare our center of mass and angular momentum derivative estimation to ground truth data (available in simulation).

The simulated avatar consisted of a humanoid model endowed with 36 degrees of freedom. The simulated motion corresponds to a walking motion on horizontal ground at 0.5 m/s using the dynamically consistent approach introduced in [25]. Ground truth kinetic and kinematics data were computed at 200 Hz using the modeling software Pinocchio, which includes rigid body dynamics algorithms for poly-articulated systems in contact [26]. Band-limited centered

white noise was added to each signal, in accordance with our analysis of the noise spectral density. The low, medium and high frequency domains were delimited from 0 to 4 Hz, 16 to 24 Hz and 92 to 100 Hz respectively, in order to be able to discriminate the effect of each noise and to limit the slopes and the order of the filters. If needed, the final user would only need to adjust the cutting frequencies inside the complementary filters, which depend on the sampling frequency as well as on the nature of the recorded motion. The standard deviations of the noise were 1 N and 1 Nm in the low and medium frequency domains for the force and moment measurements respectively, 0.1 m and 0.1 Nm in the high frequency domain for $c_{kinematic}$ and $\dot{L}_{kinematic}^c$ respectively, in order to model the noise of the 6-axis sensors. Inertial data (mass, CoM position and inertia matrix) of each segment were randomly biased in order to simulate the error due to mass distribution uncertainties (multiplicative random

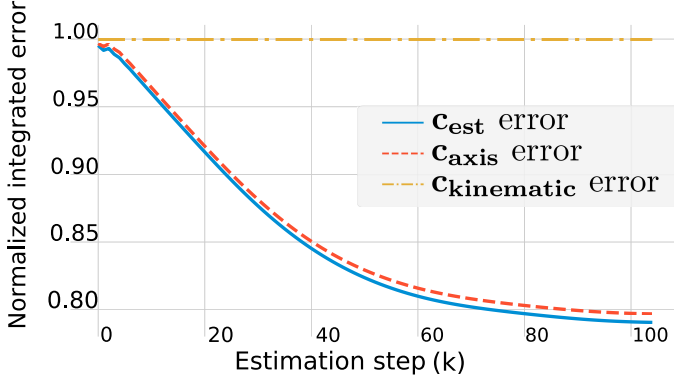


Fig. 7: *Simulation*. Evolution of the error 2-norm integrated over the whole trajectory for $c_{\text{kinematic}}$, c_{axis} and c_{est} . This plot is the result of the algorithm in Fig. 4. The integrated errors are normalized with regard to the error of $c_{\text{kinematic}}$, which is the initialization of the algorithm and is not updated throughout the iterations (and therefore constantly 1.)

value following a 1-centered normal distribution with standard deviation of 1). The cut-off frequencies were 1 Hz and 25 Hz for the low-pass and high-pass second order filters of c_{est} respectively. The band-pass filter was deduced by complementarity (see Tab. I for detailed transfer functions). The cut-off frequency for the low pass filter of \hat{L}^c was 2 Hz, the high-pass filter was similarly deduced by complementarity. For both estimates, the damping ratio of the transfer functions was set to its critically damped value ($\zeta = 1$).

The estimation procedure was initialized with the value of $c_{\text{kinematic}}$ before filtering, because it is the best guess one can make before adding further data. The recursion was stopped when the last estimates of \hat{L}^c and c were close (10^{-3}) to the current ones (see Fig. 4 for a detailed presentation of the recursive algorithm). Fig. 7 depicts the error of $c_{\text{kinematic}}$, c_{axis} and c_{est} integrated over the whole trajectory and normalized with regard to the error of $c_{\text{kinematic}}$. This result shows how the complementary filter improves the initial guess $c_{\text{kinematic}}$ by reducing the norm of the error with regard to the ground-truth values (which are exactly known in simulation). In Fig. 5, the time residuals of the error of $c_{\text{kinematic}}$, c_{axis} and c_{est} are displayed. Both the 1-norm and the mean of these residuals are displayed in order to demonstrate how our estimation method improves the kinematic estimation of the CoM, and that, most of the time, it is more accurate than the EKF approach. It should be noted that the reason why c_{axis} is that good is because it is updated at each iteration, and it therefore improves in the same way as c_{est} .

In more details, Fig. 6 shows the X, Y and Z components of c and \hat{L}^c for the different estimates. Ground truth data computed without noise during the simulation are also displayed. On the top row of Fig. 6, $c_{\text{kinematic}}$ is displayed, to exhibit the improvement provided by our method. A low frequency bias between $c_{\text{kinematic}}$ and the ground truth value is noticeable, in particular on the Y and Z components because of the scale of the plots. This bias comes from the error on the inertial parameters that we purposely introduced in the simulated data. Fig. 6 also shows that the final estimation

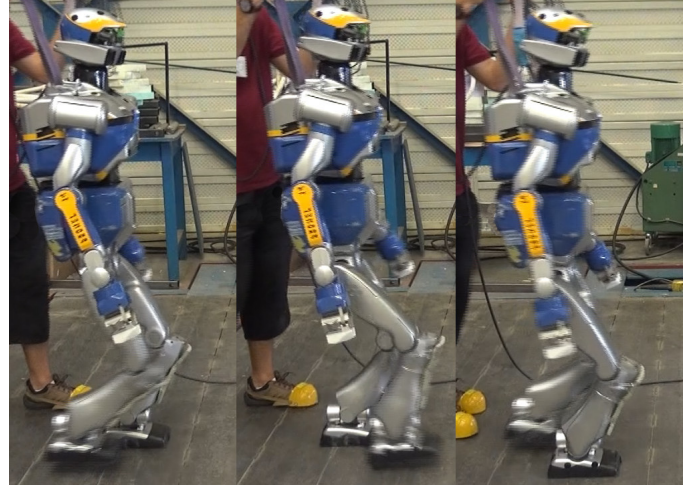


Fig. 8: *Experimentation*. Snapshots of the HRP-2 robot, walking on horizontal ground in the experimental conditions.

c_{est} is better than the initial guess, as corroborated by the error analysis in Fig. 7. For instance, on the Z axis, the average absolute error of the kinematic estimate is of 3.6 cm, whereas it is reduced to 1.1 cm for the final estimate. On the Y axis the average absolute error is reduced from 2.1 cm to 2.9 mm by the presented framework. On the X axis, which is the main direction of locomotion, no significant improvement is measured: the average absolute error remains close to 6 mm. Fig. 6 bottom displays the estimation of \hat{L}^c , and the result follows the dynamics of the ground truth trajectory. Nevertheless, some overshooting can be noticed in all axes. As a preliminary conclusion, these simulated results demonstrate the efficiency of the proposed method on purposefully noised data. Indeed, they show that recursively taking \hat{L}^c into account not only improves the estimation of c but also provides a good estimation for this quantity which is usually neglected for the sake of simplicity. However, one should notice that neglecting \hat{L}^c in the context of robot locomotion seems to be a rather harsh assumption, given the values that it takes, as also emphasised in [20].

B. Application to real robot experimental data

To complete the simulation work presented above, the proposed method is employed on a real dataset to demonstrate its effectiveness. To this end, the estimation framework was applied on real kinematic and kinetic data obtained during robot walking experiments, in order to retrieve the estimates of c and \hat{L}^c .

Data from the HRP-2 robot were used for this application (see Fig. 8). The dataset was taken from [27]. In this experience, the robot was programmed to walk on a flat terrain without feedback on its pose in the room. The values of the encoders and of the 6-axis forces and torques sensors located in the ankles of the robot were collected at 200 Hz. The kinematic estimation of the CoM was performed by implementing an odometry algorithm which assumed that, when a foot is in contact, it can not slip. The contact detection of each foot was performed using the collected force data, and by setting a threshold of 20 N on the vertical component

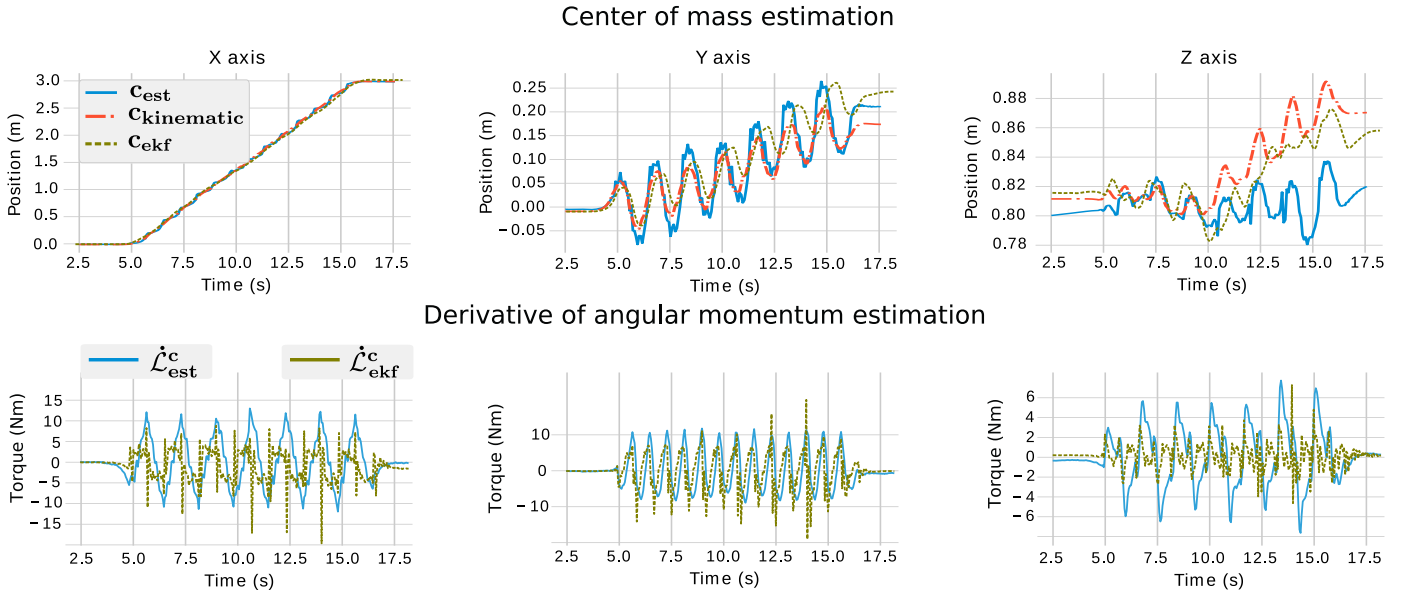


Fig. 9: *Experimentation*. Estimation of \mathbf{c} and $\dot{\mathbf{L}}^c$ for a horizontal walking motion of the HRP-2 robot. Top row \mathbf{c}_{est} , $\mathbf{c}_{kinematic}$ and \mathbf{c}_{ekf} . Bottom row : $\dot{\mathbf{L}}^c_{est}$ and $\dot{\mathbf{L}}^c_{ekf}$.

of the force. Classic rigid body algorithms implemented in Pinocchio [26] were used to compute the position of the CoM and the value of $\dot{\mathbf{L}}^c$.

Fig. 9 displays a variety of curves related to the estimation of \mathbf{c} and $\dot{\mathbf{L}}^c$ for this experimental walking on horizontal ground. As there are no ground truth values available to assess the quality of the recursive estimation with regard to kinematic estimation alone, only a comparative and quantitative analysis is relevant. The order of magnitude of the differences between \mathbf{c}_{est} and $\mathbf{c}_{kinematic}$ are consistent with the improvement towards the ground-truth values which were observed in simulation. This result suggests two remarks: the levels of noise introduced in simulation were realistic and the differences observed on real data after recursion correspond to an improvement in the estimate. Interestingly, one can notice that both the kinematic, the EKF and the recursive estimates corroborate that the robot tended to drift towards the left of its heading direction ($\approx 20\text{cm}$ after 3m of walking), a fact which was observed during the experiments. However, the recursive estimate and the EKF one show wider oscillations in the frontal plane (Y axis) than kinematic estimation. This can be due to the fact that the non perfectly planar contacts of the soles with the floor cannot be detected by kinematic estimation, whereas they can be captured by kinetic data. Another interesting results lies in the correction brought by the recursive estimation of the CoM, on the vertical axis. Both the kinematic and EKF estimation lead to an altitude of the CoM which drifts up to $\sim 5\text{ cm}$, while it is reduced to 2 cm by the recursive estimation. Fig. 9 bottom illustrates the estimation of $\dot{\mathbf{L}}^c$, which is consistent with the dynamic of the motion and the weight of the robot. The angular momentum derivative profiles obtain with the recursive method appear to be more regular and less noisy than the one computed with the EKF. The values tend to be a bit smaller than the ones obtained in simulation, this is due to the fact that the motion was performed slower during the experiments.

C. Portability of the method to human motion analysis

The authors would like to emphasize the fact that the presented method can be directly applied to human motion analysis. Indeed, in this context, the kinematic estimates of \mathbf{c} and $\dot{\mathbf{L}}^c$ are obtained using 3D point clouds of reflective markers for computing the pose of the segments, along with anthropometric tables that contain regression equations to predict segments lengths and mass distributions. For such cases of application, the kinetic data would typically come from 6-axis forces sensors such as force plates. For processing human experimental data, the only parameters that need to be tuned are the cutoff frequencies of the complementary filters. Though ground truth on kinematic and inertial parameters can hardly be provided when it comes to human body, this method could be used for benchmarking existing anthropometric tables and other estimation methods. One promising outcome of using such an estimation framework in biomechanics would be to correct the error brought by the regression equations (computed in average over a population) thanks to the exploitation of the kinetic data (specific to the subject under study). Preliminary work has been done in this direction on a horizontal walking motion dataset [28], demonstrating the effectiveness of the method for non-rigid locomotion systems, and further work will be achieved on more dynamical motions, involving multi-contact with the upper limbs.

IV. CONCLUSION

In this paper, a novel recursive filter was introduced, to simultaneously estimate the CoM position and the derivative of angular momentum expressed at the CoM. By complementary filtering kinematic and kinetic data, this method is able to get the best of both worlds. Our estimation framework does not rely on any simplifying hypothesis, such as neglecting the angular momentum derivative [16], or assuming that contact surfaces are parallel [14], [11]. Thus, the method is generic

to any in-contact locomotion scenario, and the estimation is improved with regard to former approaches, because the mathematical equations that are used are exact and exploit the coupling between c and \dot{L}^c .

On a simulated walking robot, the results showed that the proposed framework enabled us to reduce the error between the estimation of the CoM position and its real value, when compared to kinematic or EKF estimation. This improvement was a direct consequence of the proposed recursive algorithm exploiting the spectral properties of each measurement in a complementary filter. More precisely, this improvement was mainly due to a low frequency bias correction brought by a better estimation of the angular momentum derivative, exploited in the geometrical link between the CoM position and the central axis of the contact wrench. Simulation results demonstrated that the estimation of the derivative of the angular momentum was not perfect, and this is one explanation to the small bias that remained on the estimation of the CoM position after convergence of the algorithm, in addition to its non-observability on the Z axis. The overall estimation could be enhanced by improving the estimation of the angular momentum derivative which is left as a future work.

In order to demonstrate the applicability of the method in experimental conditions, the estimation algorithm was also applied to real data acquired from the HRP-2 robot during a walking task on horizontal ground. The results suggest that our method is more accurate than kinematic or EKF estimation.

We would like to emphasize that estimating both the center of mass and derivative of angular momentum is a good step towards centroidal state feedback for online motion generation algorithm in legged robotics [25]. Taking into account the derivative of angular momentum in these motion generation and control pipelines is a requirement for achieving state-of-the-art dynamical motion. To this end, it is essential to contribute with estimation schemes that accurately and efficiently estimate the latter quantities. In this perspective, as a future work, we plan to integrate this filter in the motion control pipeline of the Gepetto team [29], in order to get an online feedback of the centroidal state of our humanoid robot.

REFERENCES

- [1] D. E. Orin, A. Goswami, and S.-H. Lee, "Centroidal dynamics of a humanoid robot," *Autonomous Robots*, vol. 35, no. 2-3, pp. 161–176, 2013.
- [2] A. Hofmann, M. Popovic, and H. Herr, "Exploiting angular momentum to enhance bipedal center-of-mass control," in *Robotics and Automation, 2009. ICRA'09. IEEE Internat. Conf. on*. IEEE, 2009, pp. 4423–4429.
- [3] D. Lafond, M. Duarte, and F. Prince, "Comparison of three methods to estimate the center of mass during balance assessment," *Journal of biomechanics*, vol. 37, no. 9, pp. 1421–1426, 2004.
- [4] B. J. Stephens, "State estimation for force-controlled humanoid balance using simple models in the presence of modeling error," in *2011 IEEE Internat. Conf. on Robotics and Automation*. IEEE, 2011, pp. 3994–3999.
- [5] H. Bae and J.-H. Oh, "Novel state estimation framework for humanoid robot," *Robotics and Autonomous Systems*, vol. 98, pp. 258–275, 2017.
- [6] H. de Rosario, A. Page, A. Besa, V. Mata, and E. Conejero, "Kinematic description of soft tissue artifacts: quantifying rigid versus deformation components and their relation with bone motion," *Medical & biological engineering & computing*, vol. 50, no. 11, pp. 1173–1181, 2012.
- [7] P. De Leva, "Adjustments to zatsiorsky-seluyanov's segment inertia parameters," *Journal of biomechanics*, vol. 29, no. 9, pp. 1223–1230, 1996.
- [8] P. Sardain and G. Bessonnet, "Forces acting on a biped robot. center of pressure-zero moment point," *IEEE Tran. on Systems, Man, and Cybernetics-Part A: Systems and Humans*, vol. 34, no. 5, pp. 630–637, 2004.
- [9] N. Rotella, A. Herzog, S. Schaal, and L. Righetti, "Humanoid momentum estimation using sensed contact wrenches," in *2015 IEEE-RAS 15th Internat. Conf. on Humanoid Robots (Humanoids)*. IEEE, 2015, pp. 556–563.
- [10] S. Kajita, F. Kanehiro, K. Kaneko, K. Yokoi, and H. Hirukawa, "The 3d linear inverted pendulum mode: A simple modeling for a biped walking pattern generation," in *Intelligent Robots and Systems, 2001. Proceedings. 2001 IEEE/RSJ Internat. Conf. on*, vol. 1. IEEE, 2001, pp. 239–246.
- [11] P. G. Morasso, G. Spada, and R. Capra, "Computing the com from the cop in postural sway movements," *Human Movement Science*, vol. 18, no. 6, pp. 759–767, 1999.
- [12] O. Caron, B. Faure, and Y. Brenière, "Estimating the centre of gravity of the body on the basis of the centre of pressure in standing posture," *Journal of biomechanics*, vol. 30, no. 11, pp. 1169–1171, 1997.
- [13] T. Shimba, "An estimation of center of gravity from force platform data," *Journal of Biomechanics*, vol. 17, no. 1, pp. 5359–5760, 1984.
- [14] O. Levin and J. Mizrahi, "An iterative model for estimation of the trajectory of center of gravity from bilateral reactive force measurements in standing sway," *Gait & Posture*, vol. 4, no. 2, pp. 89–99, 1996.
- [15] S. Piperakis, M. Koskinopoulou, and P. Trahanias, "Nonlinear state estimation for humanoid robot walking," *IEEE Robotics and Automation Letters*, vol. 3, no. 4, pp. 3347–3354, 2018.
- [16] J. Carpentier, M. Benallegue, N. Mansard, and J.-P. Laumond, "Center-of-mass estimation for a polyarticulated system in contact—A spectral approach," *IEEE Tran. on Robotics*, vol. 32, no. 4, pp. 810–822, 2016.
- [17] J. Dapena, "A method to determine the angular momentum of a human body about three orthogonal axes passing through its center of gravity," *Journal of Biomechanics*, vol. 11, no. 5, pp. 251–256, 1978.
- [18] S. M. Bruijn, O. G. Meijer, J. H. Van Dieen, I. Kingma, and C. J. Lamoth, "Coordination of leg swing, thorax rotations, and pelvis rotations during gait: the organisation of total body angular momentum," *Gait & posture*, vol. 27, no. 3, pp. 455–462, 2008.
- [19] H. Herr and M. Popovic, "Angular momentum in human walking," *Journal of Experimental Biology*, vol. 211, no. 4, pp. 467–481, 2008.
- [20] P.-B. Wieber, "Holonomy and nonholonomy in the dynamics of articulated motion," in *Fast motions in biomechanics and robotics*. Springer, 2006, pp. 411–425.
- [21] D. A. Winter, *Biomechanics and motor control of human movement*. John Wiley & Sons, 2009.
- [22] F. M. Dimentberg, "The screw calculus and its applications in mechanics," DTIC Document, Tech. Rep., 1968.
- [23] F. Bailly, J. Carpentier, B. Pinet, P. Souères, and B. Watier, "A mechanical descriptor of human locomotion and its application to multi-contact walking in humanoids," in *2018 7th IEEE Internat. Conf. on Biomedical Robotics and Biomechanics (Biorob)*. IEEE, 2018, pp. 350–356.
- [24] W. T. Higgins, "A comparison of complementary and kalman filtering," *IEEE Tran. on Aerospace and Electronic Systems*, pp. 321–325, 1975.
- [25] J. Carpentier, S. Tonneau, M. Naveau, O. Stasse, and N. Mansard, "A versatile and efficient pattern generator for generalized legged locomotion," in *Internat. Conf. on Robotics and Automation (ICRA)*. IEEE, 2016, pp. 3555–3561.
- [26] J. Carpentier, G. Saurel, G. Buondonno, J. Mirabel, F. Lamiroux, O. Stasse, and N. Mansard, "The Pinocchio C++ library – A fast and flexible implementation of rigid body dynamics algorithms and their analytical derivatives," in *Internat. Symposium on System Integrations*, 2019.
- [27] O. Stasse, K. Giraud-Esclasse, E. Brousse, M. Naveau, R. Régnier, G. Avrin, and P. Souères, "Benchmarking the hrp-2 humanoid robot during locomotion," *Frontiers in Robotics and AI*, vol. 5, p. 122, 2018.
- [28] F. Bailly, J. Carpentier, B. Watier, and P. Souères, "Recursive estimation of the human body's center of mass and angular momentum derivative," in *To appear in CMBBE 16th Internat. Symposium on Computer Methods in Biomechanics and Biomedical Engineering*, 2019.
- [29] J. Carpentier, A. Del Prete, S. Tonneau, T. Flayols, F. Forget, A. Mifsud, K. Giraud, D. Atchuthan, P. Fernbach, R. Budhiraja, et al., "Multi-contact locomotion of legged robots in complex environments—the loco3d project," in *RSS Workshop on Challenges in Dynamic Legged Locomotion*, 2017, p. 3p.