



HAL
open science

Detection of highly excited OH towards AGB stars. A new probe of shocked gas in the extended atmospheres

T. Khouri, L. Velilla-Prieto, E. de Beck, T. Vlemmings, H. Olofsson, B. Lankhaar, H. Black, Alain Baudry

► To cite this version:

T. Khouri, L. Velilla-Prieto, E. de Beck, T. Vlemmings, H. Olofsson, et al.. Detection of highly excited OH towards AGB stars. A new probe of shocked gas in the extended atmospheres. *Astronomy and Astrophysics - A&A*, 2019, 623, pp.L1. 10.1051/0004-6361/201935049 . hal-02057108

HAL Id: hal-02057108

<https://hal.science/hal-02057108>

Submitted on 11 Jul 2022

HAL is a multi-disciplinary open access archive for the deposit and dissemination of scientific research documents, whether they are published or not. The documents may come from teaching and research institutions in France or abroad, or from public or private research centers.

L'archive ouverte pluridisciplinaire **HAL**, est destinée au dépôt et à la diffusion de documents scientifiques de niveau recherche, publiés ou non, émanant des établissements d'enseignement et de recherche français ou étrangers, des laboratoires publics ou privés.

LETTER TO THE EDITOR

Detection of highly excited OH towards AGB stars

A new probe of shocked gas in the extended atmospheres

T. Khouri¹, L. Velilla-Prieto¹, E. De Beck¹, W. H. T. Vlemmings¹, H. Olofsson¹, B. Lankhaar¹,
J. H. Black¹, and A. Baudry²

¹ Department of Space, Earth and Environment, Chalmers University of Technology, Onsala Space Observatory,
43992 Onsala, Sweden
e-mail: theo.khouri@gmail.com

² Laboratoire d'Astrophysique de Bordeaux, Université Bordeaux, CNRS, B18N, Allée Geoffroy Saint-Hilaire, 33615 Pessac, France

Received 11 January 2019 / Accepted 15 February 2019

ABSTRACT

Aims. We characterise the gas in the extended atmospheres of the oxygen-rich asymptotic giant branch (AGB) stars W Hya and R Dor using high angular resolution ALMA observations.

Methods. We report the detection and investigate the properties of high-excitation Λ -doubling line emission of hydroxyl (OH).

Results. The OH lines are produced very close to the central stars and seem optically thin and with no maser effect. We analyse the molecular excitation using a population diagram and find rotational temperatures of ~ 2500 K and column densities of $\sim 10^{19}$ cm⁻² for both sources. For W Hya, we observe emission from vibrationally excited H₂O arising from the same region as the OH emission. Moreover, CO $v = 1, J = 3-2$ emission also shows a brightness peak in the same region. Considering optically thin emission and the rotational temperature derived for OH, we find a CO column density ~ 15 times higher than that of OH, within an area of (92×84) mas² centred on the OH emission peak. These results should be considered tentative because of the simple methods employed. The observed OH line frequencies differ significantly from the predicted transition frequencies in the literature, and provide the possibility of using OH lines observed in AGB stars to improve the accuracy of the Hamiltonian used for the OH molecule. We predict stronger OH Λ -doubling lines at millimetre wavelengths than those we detected. These lines will be a good probe of shocked gas in the extended atmosphere and are possibly even suitable as probes of the magnetic field in the atmospheres of close-by AGB stars through the Zeeman effect.

Key words. stars: AGB and post-AGB – stars: individual: W Hya – stars: individual: R Dor – stars: individual: IK Tau – circumstellar matter – line: identification

1. Introduction

At the ends of their lives, low- and intermediate-mass stars become very luminous and cool as they ascend the asymptotic giant branch (AGB). They develop an extended atmosphere where a rich molecular chemistry occurs, leading to the formation of dust and to copious mass loss. Shocks happen periodically in the atmosphere because of strong stellar pulsations that take place during the AGB phase and of the motion of large convective cells in the stellar hydrogen envelope (e.g. Höfner & Olofsson 2018). These shocks can dissociate molecules and have a major effect on the chemical composition of the gas (e.g. Cherchneff 2006).

Hydroxyl is a very important radical for shock chemistry in the inner circumstellar envelope, and is also produced in its outer parts through photodissociation of H₂O. An alternative possibility for forming highly excited OH in the inner envelope is photodissociation of H₂O by ultraviolet line emission from a stellar chromosphere or a hot binary, similar to the mechanism discussed by Tappe et al. (2008) in the Herbig-Haro object HH 211.

The unpaired electron of OH and the nuclear magnetic dipole moment of H give rise to a rich microwave and a near-/far-infrared line spectrum (e.g. Beaudet & Poynter 1978; Drouin

2013). Detections towards evolved stars include ro-vibrational (Hinkle 1978), spin-flip, and pure rotational (Sylvester et al. 1997), and the famous 18 cm maser-type emission from the ground state of OH (first reported in stars by Wilson & Barrett 1968). While the ro-vibrational lines are produced close to the star by gas in the shocked atmosphere, all the other lines observed thus far are expected to be produced in the outer envelope after the dissociation of H₂O.

In this Letter, we report the first detection of highly excited ($E_u/k \gtrsim 4800$ K) Λ -doubling hyperfine lines towards three AGB stars, W Hya, R Dor and IK Tau, based on observations with the Atacama Large Millimeter/submillimeter Array (ALMA) at high angular resolution. These lines are produced in the atmosphere and provide a new probe of gas in these inner regions. Every spin-rotation state of OH, defined by the rotational angular momentum (N) and hyperfine-free angular momentum (J), has two Λ components of different parity, each of which is further split into two hyperfine substates of total angular momentum $F = J \pm 1/2$. We detect only the main lines ($\Delta F = 0$) within different J rotational levels. This is expected as their Einstein- A coefficients are between two and three orders of magnitude larger than those of the two satellite lines ($\Delta F = \pm 1$). In this Letter we give the excitation energy of lines, E_u/k , in K, where

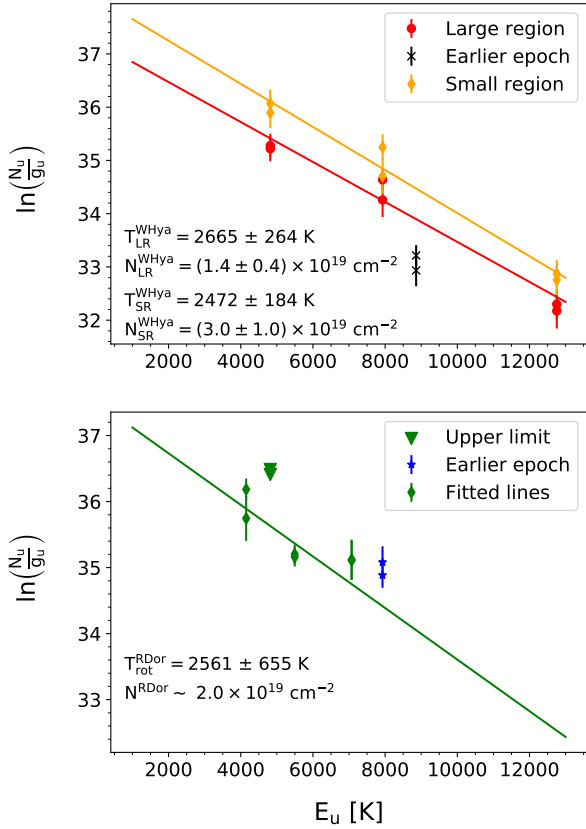


Fig. 1. Population diagrams for lines detected towards W Hya (*upper panel*) and R Dor (*lower panel*). We performed the fit considering lines observed within approximately one month in time. For W Hya, we performed the population diagram analysis considering line fluxes extracted from two distinct regions, see text for details.

E_u is the excitation energy of the upper level of the transition and k the Boltzmann constant.

2. Observations

The first detections of OH presented in this paper were made in the observations that were part of projects 2016.1.00004.S and 2017.1.00075.S (PI Vlemmings). The aim of these projects was to resolve the O-rich AGB stars W Hya, R Dor, *o* Ceti, and R Leo in ALMA Bands 4 and 6, using ALMA configurations that obtained an angular resolution <30 mas. The details of the observational set-up and calibration will be presented in a forthcoming paper (Vlemmings et al., in prep.). Generally, the observatory-provided calibration or pipeline scripts were used, after which the data were self-calibrated on the strong stellar continuum. We first detected the two strongest OH Λ -doubling lines within the $N_J = 13_{25/2}$ state at ~ 130.1 GHz around W Hya. Subsequently, we searched for similar OH lines at other frequencies in our data and in archival observations of close-by O-rich AGB stars (W Hya, R Dor, *o* Ceti, R Leo, and IK Tau). Also for these observations, typically at lower angular resolution, we applied the calibration provided by the observatory followed by continuum self-calibration. In doing so, we discovered multiple high-quality detections of Λ -doubling line pairs towards W Hya and R Dor, and one such line pair towards IK Tau. The additional observations of W Hya in which we found Λ -doubling OH emission are from projects 2016.1.00374.S (Band 6, PI Ohnaka), and 2016.A.00029.S (Band 7, PI Vlemmings). For R Dor, we

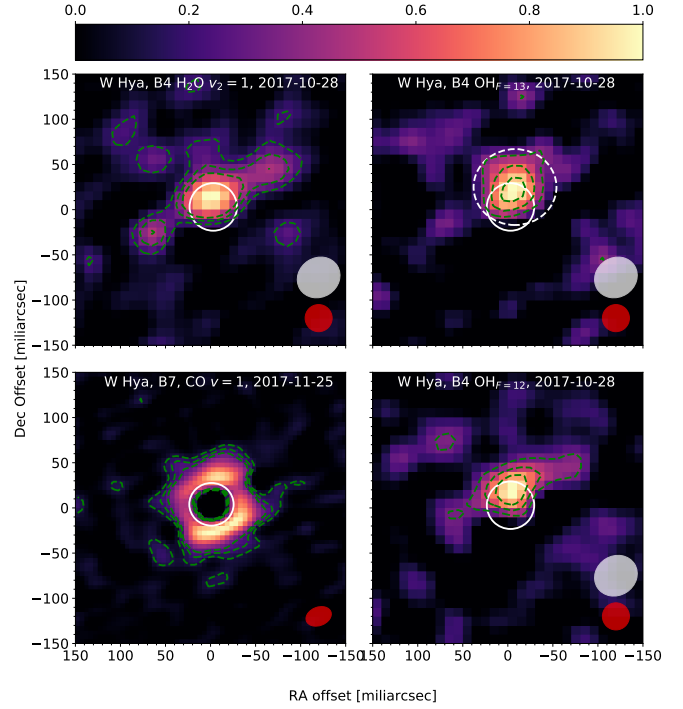


Fig. 2. Emission regions observed towards W Hya of the lines $v_2 = 1, J_{K_a, K_c} = 8_{8,1} - 9_{7,2}$ and $v_2 = 1, J_{K_a, K_c} = 8_{8,0} - 9_{7,3}$ of H₂O (sum of the two lines); $v = 0, N_J = 13_{25/2}$ with $F = 12 - 12$ and $F = 13 - 13$ of OH; and $v = 1, J = 3 - 2$ of CO. The white contours show the size of the stellar disk at the appropriate frequencies (measured from fits of a uniform-disk source to the observed visibilities; Vlemmings et al., in prep.), the colour map shows the integrated line intensity normalised to its peak value, and the dashed green contours show emission 3, 5, and 7 times above the root mean square noise of the given image. The dashed white circle shows the extent of the small region (see text). The grey and red ellipses show the restoring beam of the continuum and line images, respectively. For the images in band 7, the two beams are equal.

found emission in data from projects 2017.1.00582.S (Bands 3, 6, and 7, PI De Beck) and also, unidentified, in published data (Decin et al. 2018). The emission towards IK Tau was detected in the data of project 2017.1.00582.S (Band 6, PI De Beck). In the Appendix we show the spectra observed towards W Hya and IK Tau in Fig. A.1 and R Dor in Fig. A.2. In Table A.1, we give the dates when each observation was obtained. A search for OH emission in available observations of *o* Ceti and R Leo was unsuccessful.

3. Observational results

3.1. W Hya

We detect three OH line pairs towards W Hya, in observations acquired at similar stellar pulsation phases. One pair lies in the vibrational ground state, $v = 0$, the other two in the first vibrationally excited state, $v = 1$. The spread of more than 8000 K in excitation energy allows us to obtain good constraints on the column density and rotational temperature using a population diagram (Goldsmith & Langer 1999, Fig. 1). For this analysis, we use the partition function given by Drouin (2013). The spatially resolved observations (Fig. 2) allow us to produce population diagrams with line fluxes from two regions, a small region ($\sim 6.1 \times 10^{-3}$ arcsec², shown in Fig. 2) centred on the emission peak, and a larger region ($\sim 3.1 \times 10^{-2}$ arcsec²) that includes the star and the circumstellar environment to the north

Table 1. OH lines detected towards W Hya and R Dor.

ν (MHz)	ν, N_J	$F' - F''$	$\int F_\nu d\nu$ ($10^{-22} \text{ W m}^{-2}$)	E_u/k (K)	A_{ul} (10^{-7} s^{-1})
W Hya LR (SR)					
130078 (0.1)	0, 13 _{25/2}	13 ⁻ -13 ⁺	8.0 ± 1.5 (2.9 ± 0.8)	4818	2.82
130114 (0.1)	0, 13 _{25/2}	12 ⁻ -12 ⁺	7.0 ± 1.5 (3.2 ± 0.8)	4818	2.82
130639 (0.2)	1, 10 _{21/2}	10 ⁺ -10 ⁻	10 ± 1.5 (3.6 ± 0.8)	7930	8.55
130655 (0.2)	1, 10 _{21/2}	11 ⁺ -11 ⁻	7.5 ± 2.5 (2.3 ± 0.8)	7930	8.55
265734 (0.8)	0, 18 _{35/2}	18 ⁺ -18 ⁻	14 ± 2 (-)	8860	13.8
265765 (0.8)	0, 18 _{35/2}	17 ⁺ -17 ⁻	10 ± 3 (-)	8860	13.8
333394 (2.0)	1, 17 _{35/2}	17 ⁻ -17 ⁺	20 ± 7 (7.0 ± 2.0)	12756	47.2
333412 (2.0)	1, 17 _{35/2}	18 ⁻ -18 ⁺	24 ± 7 (8.3 ± 2.0)	12756	47.2
R Dor					
107037 (0.06)	0, 12 _{23/2}	12 ⁺ -12 ⁻	1.85 ± 0.17	4149	1.79
107073 (0.06)	0, 12 _{23/2}	11 ⁺ -11 ⁻	1.1 ± 0.4	4149	1.79
130078 (0.1)	0, 13 _{25/2}	13 ⁻ -13 ⁺	<5	4818	2.82
130114 (0.1)	0, 13 _{25/2}	12 ⁻ -12 ⁺	<5	4818	2.82
252127 (0.4)	0, 14 _{29/2}	14 ⁺ -14 ⁻	30.8 ± 1.1	5495	30.33
252145 (0.4)	0, 14 _{29/2}	15 ⁺ -15 ⁻	34.5 ± 1.5	5495	30.34
317397 (0.9)	0, 16 _{33/2}	16 ⁺ -16 ⁻	64 ± 10	7072	45.87
317415 (0.9)	0, 16 _{33/2}	17 ⁺ -17 ⁻	67 ± 10	7072	45.87
351593 (1.2)	0, 17 _{35/2}	17 ⁻ -17 ⁺	72 ± 10	7928	55.0
351612 (1.2)	0, 17 _{35/2}	18 ⁻ -18 ⁺	92 ± 20	7928	55.0

Notes. In the second and third columns, we indicate the transitions specifying the quantum numbers described in the text and the positive or negative parity of the energy levels involved. We also give the predicted line frequency (ν) with corresponding uncertainty (obtained from the JPL database, see text), the excitation energy of the upper level of the transition (E_u/k , where k is the Boltzmann constant) and the integrated line flux ($\int F_\nu d\nu$) with corresponding uncertainty. We also list the Einstein-A coefficient of the transitions (A_{ul} , calculated from the line strengths given in the JPL database). The line fluxes for W Hya are given for the large (LR) and small (SR) regions (see text).

and that encompasses all detected emission. The line fluxes were measured by fitting Gaussian functions to the observed spectra. The only exception are the fluxes from lines within level $\nu, N_J = 1, 17_{35/2}$ which were obtained by integrating the spectrum numerically. This approach was chosen because these lines are seen close to several other features and it is not easy to identify the continuum level in the immediate vicinity of the lines. The line fluxes obtained are given in Table 1. From a population diagram analysis (Fig. 1), we find rotational temperatures for the small and large regions of 2472 ± 184 K and 2665 ± 264 K, respectively, and corresponding OH column densities of $(3.0 \pm 1.0) \times 10^{19} \text{ cm}^{-2}$ and $(1.4 \pm 0.3) \times 10^{19} \text{ cm}^{-2}$. The rotational temperatures derived are equal when considering the fit uncertainties.

We identify another Λ -doubling line of OH at ~ 265.5 GHz in earlier observations of W Hya (PI Ohnaka), at pulsation phase ~ 0.7 . The line strength is lower than expected based on the population diagram obtained by us for the large region. An increase in column density by a factor of ~ 2.5 (for the same rotational temperature) is enough to explain the increase in line strength between epochs 0.7 and 1.0.

The lines are produced at least partially in front of the stellar disk and in the northern region of the extended atmosphere, and thus show emission even against the stellar continuum (Fig. 2). This suggests that at least a fraction of the OH gas has a rotational temperature higher than the continuum brightness temper-

ature. A weak absorption feature seems to be present in most lines and becomes clearer when we extract a spectrum towards the star (Fig. A.1). This indicates that there is a fraction of the OH gas with rotational temperature lower than the brightness temperature of the continuum. These two findings can be reconciled by considering that the environment where the OH lines are produced is inhomogeneous and that the continuum brightness temperatures at bands 4 and 7, respectively ~ 2500 K and ~ 2650 K, are very similar to the rotational temperatures we derive. If a significant fraction of the OH molecules is seen against the stellar disk, the column densities we obtain using the population diagram analysis will be underestimated because of absorption or weaker emission against the background of the stellar disk.

Comparison to H₂O and CO lines

In the band 4 data obtained towards W Hya we detect the $\nu_2 = 1, J_{K_a, K_c} = 8_{8,1}-9_{7,2}$ and $\nu_2 = 1, J_{K_a, K_c} = 8_{8,0}-9_{7,3}$ rotational lines of ortho- and para-H₂O, respectively, which are produced in the same region as the OH lines (Fig. 2). These two H₂O lines have excitation energies of 5080 K. The lines have FWHM of $\sim 8 \text{ km s}^{-1}$ and peak flux density in the small region of ~ 40 mJy and ~ 25 mJy for the $\nu_2 = 1, J_{K_a, K_c} = 8_{8,1}-9_{7,2}$ and $\nu_2 = 1, J_{K_a, K_c} = 8_{8,0}-9_{7,3}$ lines, respectively. This implies optical depths of ~ 0.2 , and thus optical depth effects might be important. Given the complex excitation of H₂O and the small number of observed lines, we refrain from estimating the H₂O column density.

The extended atmosphere is traced by CO $\nu = 1, J = 3-2$ emission detected at 342.648 GHz. Observations of this line acquired in December 2015 reveal an emission region with a radius of ~ 48 mas centred on the star (Vlemmings et al. 2017), similar in size to that shown in the data we discuss. Vlemmings et al. (2017) modelled the emission line in these earlier observations and found the gas mass in the emission region to be $\sim 1.4 \times 10^{-4} M_\odot$.

The CO $\nu = 1, J = 3-2$ line shows an emission peak in the same region where the OH emission arises. This is an indication of a larger column density of gas, higher gas temperature, or more efficient radiative excitation in this region. To obtain an estimate of the CO column density, we extract the CO $\nu = 1, J = 3-2$ line emission from the small region used in the OH analysis. In this CO line spectrum, emission reaches a peak of 140 mJy at $\nu_{\text{LSR}} = 39.2 \text{ km s}^{-1}$, while absorption reaches a level of ~ 50 mJy at a velocity of $\sim 10 \text{ km s}^{-1}$ with respect to the ν_{LSR} . The CO spectrum extracted towards the star shows no absorption at $\sim \nu_{\text{LSR}}$ and we conclude that the line peak level is not strongly affected by absorption. Hence, we approximate the CO line in the small region by a Gaussian line with the observed peak value (140 mJy) and an inferred full width at half maximum (FWHM) of $\sim 9 \text{ km s}^{-1}$. We estimate the CO column density assuming optically thin emission and considering an excitation temperature of 2000 ± 1000 K. This broad range in excitation temperatures was chosen to encompass the derived rotational temperature of OH and lower values derived from modelling earlier CO $\nu = 1, J = 3-2$ observations (Vlemmings et al. 2017). We find $N_{\text{CO}} \sim 4^{+3}_1 \times 10^{20} \text{ cm}^{-2}$ and an optical depth at the line centre of $\sim 0.3 \pm 0.2$. This result indicates a tentative CO-to-OH column density ratio of ~ 15 in the small region around the OH emission peak.

Considering a CO abundance relative to H₂ of 4×10^{-4} (e.g. Willacy & Millar 1997), the derived CO-to-OH column density ratio suggests an OH abundance relative to H₂ in the small region

of $\sim 3 \times 10^{-5}$. This is in agreement with abundances calculated in post-shocked gas under the assumption of thermal equilibrium, but a factor of 50 higher than that obtained without a thermal equilibrium assumption (Cherchneff 2006). Assuming the depth of the small region to be comparable to its outer radius (~ 70 mas), we derive an average H_2 density of $\sim 10^{10} \text{ cm}^{-3}$. This is too low for collisions to dominate the excitation of CO to $v = 1$ (e.g. Woitke et al. 1999). We note that this average density is most likely much lower than the densities where the OH emission is produced, very close to the star. The diluted stellar radiation field will have a temperature close to the rotational temperature we derive, and thus is probably the dominant factor controlling the excitation of CO, and probably OH. This suggests that the OH abundance we determined is a crude estimate and that a proper determination must rely on non-local thermodynamic equilibrium (non-LTE) modelling of the observed OH and CO lines.

3.2. R Dor

The emission region of the OH line within level $N_J = 16_{33/2}$ observed towards R Dor is spatially unresolved with a beam of $0''.11 \times 0''.16$ and position angle (PA) $\sim -89^\circ$. By assuming the brightness distribution to be Gaussian and fitting it in the image plane using the Common Astronomy Software Applications (CASA) package (McMullin et al. 2007), we find the emission region to have a FWHM of $\sim 70 \pm 20$ mas, and a corresponding area of $(6 \pm 3) \times 10^{-3} \text{ arcsec}^2$. From a population diagram analysis (Fig. 1), we find a rotational temperature of 2560 ± 650 K and a column density of $\sim 2 \times 10^{19} \text{ cm}^{-2}$, with an uncertainty of a factor of a few. The derived values are not as well constrained as for W Hya because the detected lines span a smaller range in excitation energy and are not as well fitted by a straight line in the population diagram. Considering only the two lines observed within 24 h of each other (within levels $N_J = 14_{29/2}$ and $N_J = 16_{33/2}$), we find a very high rotational temperature of 23500 ± 8200 K. The fit obtained using only two transitions is rather unconstrained, however, and strong conclusions cannot be drawn. Nonetheless, the level populations we infer for the upper levels of these two transitions might indicate a more complex excitation of OH in R Dor than our assumption of a single-temperature gas and LTE excitation. We also note that R Dor has been observed to rotate with a velocity of $v \sin(i) = 1.0 \text{ km s}^{-1}$ at the millimetre photosphere (Vlemmings et al. 2018). Although we do not expect the rotation to affect our analysis of the OH lines significantly, close examination of the OH channel maps (Fig. A.3) suggests that some effect of rotation is observed despite insufficient resolution. Finally, we did not detect the OH lines within level $v, N_J = 0, 13_{25/2}$ in observations of R Dor in band 4, with the same set-up as the observations of W Hya (Table 1). As shown in the population diagram (Fig. 1) this is consistent with the expected line strengths and the sensitivity achieved.

3.3. Optical depths and line-flux ratios

Based on our findings for the rotational temperature, column densities, and emission region, we estimate the optical depths (τ) of the lines used in the population diagram analysis. As shown in Table 2, we find all lines to be optically thin ($\tau \lesssim 0.05$), as assumed in our analysis.

As another diagnosis of the excitation conditions, we compare the observed ratio between the two lines detected within a given N_J level to the expected value from optically thin emis-

Table 2. Observed line-flux ratios compared to predictions for optically thin emission and excitation following the Boltzmann distribution.

	ν (GHz)	v, N_J	Obs. ratio	LTE ratio	τ	
W Hya	130.1	0, $13_{25/2}$	0.875 ± 0.2	0.93	0.03	(0.06)
	130.6	1, $10_{21/2}$	0.75 ± 0.26	1.10	0.02	(0.05)
	265.7	0, $18_{35/2}$	0.71 ± 0.22	0.95		
	333.4	1, $17_{35/2}$	1.2 ± 0.5	1.06	0.002	(0.01)
R Dor	107.0	0, $12_{23/2}$	0.59 ± 0.22	0.92	0.01	
	252.1	0, $14_{29/2}$	1.12 ± 0.07	1.07	0.02	
	317.4	0, $16_{33/2}$	1.04 ± 0.18	1.06	0.02	
	351.6	0, $17_{35/2}$	1.29 ± 0.31	1.06		

Notes. The ratios are given by the flux of the higher-frequency line divided by that of the lower-frequency line (see Table 1). We also give the estimated optical depth (τ) for each line when the emission region could be estimated. The optical depth estimate for the flux from the small region in W Hya (see text) is given in parentheses.

sion and LTE excitation (Table 2). The ratios we find for the line pairs observed towards R Dor are mostly close to the expected values. The only exception is the pair within level $N_J = 12_{23/2}$ at 107.0 GHz, for which the observed ratio is more than one standard deviation lower than expected. For W Hya, two of the four observed pairs (within levels $v = 1, N_J = 10_{21/2}$ and $v = 0, N_J = 18_{35/2}$) have ratios that deviate from the LTE expectation by more than one standard deviation. This could be a sign of weak maser action in these lines, but the lines are relatively weak and more sensitive observations of a larger number of lines is required before a robust conclusion can be drawn.

3.4. Transition frequencies

We find that some of the observed OH line frequencies (Drouin 2013) differ from the predicted values available in the JPL catalogue¹ (Pickett et al. 1998) by more than the uncertainties quoted (Figs. 3, A.1 and A.2). This discrepancy does not hamper the line identifications because the separation between the observed lines within a given pair is in good agreement with theoretical predictions throughout the OH energy ladder. Further confidence on the line identifications arises from detection of all lines expected, given the noise level of the obtained spectra and the derived rotational temperatures. Finally, chemical models predict OH to form (Cherchneff 2006) and we find no other suitable candidate species to explain any of the detected lines when considering typical velocities for gas in these inner regions ($\sim 10 \text{ km s}^{-1}$). In Fig. 3 we show that the discrepancy between observed and theoretical frequencies increases with frequency (and excitation energy). We derive the observed central frequencies by fitting Gaussian functions to the observed lines. We use source velocities with respect to the local standard of rest, v_{LSR} , equal to 39.2 and 8.5 km s^{-1} for W Hya (Vlemmings et al. 2017) and R Dor (Khouri et al., in prep.), respectively. These velocities were derived from modelling the $v = 1, J = 3-2$ CO line produced in the extended atmospheres of these stars. Based on values reported in literature, we assume an uncertainty of 1.5 km s^{-1} on v_{LSR} and calculate the uncertainty on the observed frequency $\sigma = (\sigma_{v_{\text{LSR}}}^2 + \sigma_{\text{fit}}^2)^{1/2}$, where σ_{fit} is the uncertainty from the fitting

¹ Available from <https://spec.jpl.nasa.gov/>

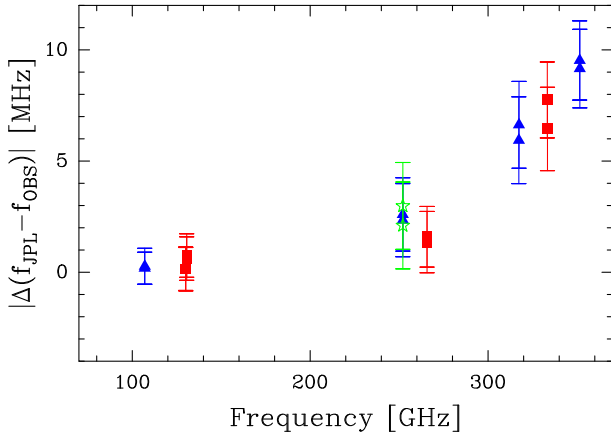


Fig. 3. Difference between the predicted frequencies (f_{JPL}) and the observed frequencies (f_{OBS}) for the observed lines. The blue triangles, red squares, and green stars represent the lines observed towards R Dor, W Hya, and IK Tau, respectively.

procedure. When σ was smaller than the channel width, it was set to the channel width.

The velocity of the gas in which these lines are produced is not known and it may not be centred at v_{LSR} . Hence, the derived values of the line centres may not be representative of the transition frequencies. Moreover, absorption against the stellar continuum may shift the line centres (Fig. A.1). If the lines are produced by gas at the same velocity, the uncertainty on the velocity of the emitting gas affects each line in a systematic way, and the observed shifts should be proportional to frequency and different for each source. Since higher excitation lines are probably produced closer to the star, these might present stronger absorption relative to the lower excitation lines, and hence show a larger artificial shift. This would produce a trend similar to the one we see. We note, however, that for W Hya we see absorption in the transitions within the $v, N_J = 0, 13_{25/2}$ level that are redshifted from the line centre (infalling gas), while the large line-centre shifts observed in the lines within level $v, N_J = 1, 17_{35/2}$ are opposite to those expected if they were caused by a similar absorption (see Table A.2). Given the several sources of uncertainties, a more precise empirical estimate on the deviation of the line frequencies from predicted values needs to rely on careful radiative-transfer modelling of the lines. These first observations suggest that studies of this type could provide important constraints on theoretical models of the OH molecule.

4. Conclusion and outlook

The detection of highly excited submillimetre lines of the very reactive OH radical in the inner circumstellar environment of AGB stars provides a new tool that can be used to study the complex dynamics and chemistry in these inner regions. In particular, a better overview of the excitation structure of this molecule might help understand whether dissociation in shocks is indeed the main formation pathway. Moreover, a

comprehensive study of the OH mm/sub-mm spectrum towards AGB stars will provide important constraints on theoretical models of the OH molecule, and thus to spectroscopic predictions (Drouin 2013). AGB stars are excellent for spectroscopic characterisation and provide the perfect laboratories for this type of study (e.g. Cernicharo et al. 2018).

The lines we detected imply that stronger Λ -doubling OH lines should be present in the mm/sub-mm spectrum of O-rich AGB stars. Using the column density and the rotational temperatures obtained from the population diagram analysis, we estimate the line pairs within levels $N_J = 8_{17/2}$ (at ~ 91.2 GHz), $N_J = 9_{19/2}$ (at ~ 113.6 GHz), $N_J = 10_{21/2}$ (at ~ 137.9 GHz), $N_J = 11_{23/2}$ (at ~ 164.1 GHz), and $N_J = 12_{25/2}$ (at ~ 192.0 GHz) to be respectively $\sim 3.3, 4.6, 5.8, 7.1,$ and 8.0 times stronger than those within level $N_J = 13_{25/2}$ (at ~ 130.1 GHz). Our calculations indicate that these lines should all have $\tau < 1$.

Since OH is a paramagnetic molecule, the magnetic field strength in the line-formation region can be inferred from the Zeeman splitting experienced by a given line. This introduces the exciting possibility of measuring the magnetic fields in the atmospheres of close-by AGB stars using ALMA observations and available techniques. W Hya is the best target for observations of this type because of the observed line strengths. The stronger lines that we predict in the ~ 100 to ~ 200 GHz spectral range are the most suitable for this type of study.

Acknowledgements. This work was supported by ERC consolidator grant 614264. TK, WV, HO, and MM acknowledge support from the Swedish Research Council. EDB acknowledges support from the Swedish National Space Agency. This paper makes use of the following ALMA data: ADS/JAO.ALMA#2013.1.00166.S, ADS/JAO.ALMA#2016.A.00029.S, ADS/JAO.ALMA#2016.1.00374.S, ADS/JAO.ALMA#2017.1.00075.S, and ADS/JAO.ALMA#2017.1.00582.S. ALMA is a partnership of ESO (representing its member states), NSF (USA), and NINS (Japan), together with NRC (Canada), NSC and ASIAA (Taiwan), and KASI (Republic of Korea), in cooperation with the Republic of Chile. The Joint ALMA Observatory is operated by ESO, AUI/NRAO, and NAOJ.

References

- Beaudet, R. A., & Poynter, R. L. 1978, *J. Phys. Chem. Ref. Data*, **7**, 311
- Cernicharo, J., Guélin, M., Agúndez, M., et al. 2018, *A&A*, **618**, A4
- Cherchneff, I. 2006, *A&A*, **456**, 1001
- Decin, L., Richards, A., Danilovich, T., Homan, W., & Nuth, J. A. 2018, *A&A*, **615**, A28
- Drouin, B. J. 2013, *J. Phys. Chem. A*, **117**, 10076
- Goldsmith, P. F., & Langer, W. D. 1999, *ApJ*, **517**, 209
- Hinkle, K. H. 1978, *ApJ*, **220**, 210
- Höfner, S., & Olofsson, H. 2018, *A&ARv*, **26**, 1
- McMullin, J. P., Waters, B., Schiebel, D., Young, W., & Golap, K. 2007, *ASP Conf. Ser.*, **376**, 127
- Pickett, H. M., Poynter, R. L., Cohen, E. A., et al. 1998, *J. Quant. Spectr. Rad. Transf.*, **60**, 883
- Sylvester, R. J., Barlow, M. J., Rieu, N. Q., et al. 1997, *MNRAS*, **291**, L42
- Tappe, A., Lada, C. J., Black, J. H., & Muench, A. A. 2008, *ApJ*, **680**, L117
- Vlemmings, W., Khouri, T., O’Gorman, E., et al. 2017, *Nat. Astron.*, **1**, 848
- Vlemmings, W. H. T., Khouri, T., Beck, E. D., et al. 2018, *A&A*, **613**, L4
- Willacy, K., & Millar, T. J. 1997, *A&A*, **324**, 237
- Wilson, W. J., & Barrett, A. H. 1968, *Science*, **161**, 778
- Woitke, P., Helling, C., Winters, J. M., & Jeong, K. S. 1999, *A&A*, **348**, L17

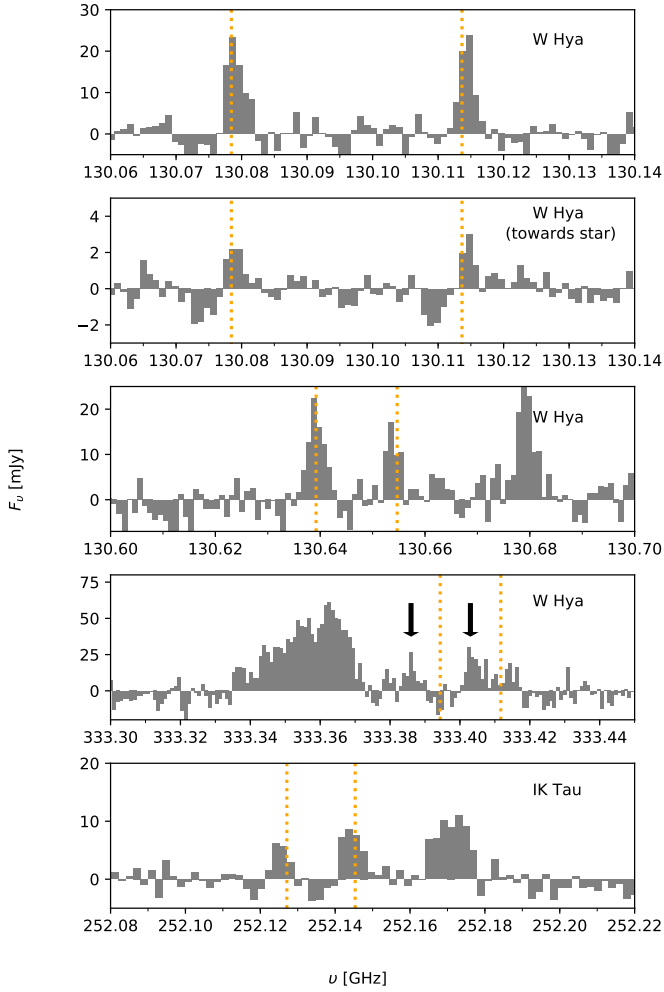
Appendix A: Additional material


Fig. A.1. Λ -doubling lines observed towards W Hya (used in the population diagram shown in Fig. 1) and IK Tau. The spectra are given in rest frequencies using the v_{LSR} of W Hya (39.2 km s^{-1}) and IK Tau (33.8 km s^{-1}). The vertical dotted orange lines show the predicted line frequencies from the JPL catalogue. The arrows in the *second panel from the bottom* mark the lines identified as belonging to the OH molecule. The lines were extracted from the large region described in the text for W Hya and from within the central beam of the observations for IK Tau. Other lines can be seen in the displayed spectra, which we identified as follows: *middle panel*, the $J_{K_a, K_c} = 42_{10,32} - 43_{9,35}$ SO₂ line (rest frequency 130.680 GHz); *second panel from the bottom*, a blend between $J_{K_a, K_c} = 59_{6,54} - 58_{7,51}$ and $28_{3,25} - 27_{4,24}$ SO₂ lines (rest frequencies 333.360 and 333.364 GHz, and possibly also a blend with one line of ³⁴SO₂ and a vibrationally excited line of SO₂); and *bottom panel*, $v_1, J_{K_a, K_c} = v_1, 7_{4,3} - 2v_2, 8_{5,4}$ H₂O line (tentative identification, rest frequency: 252.172 GHz).

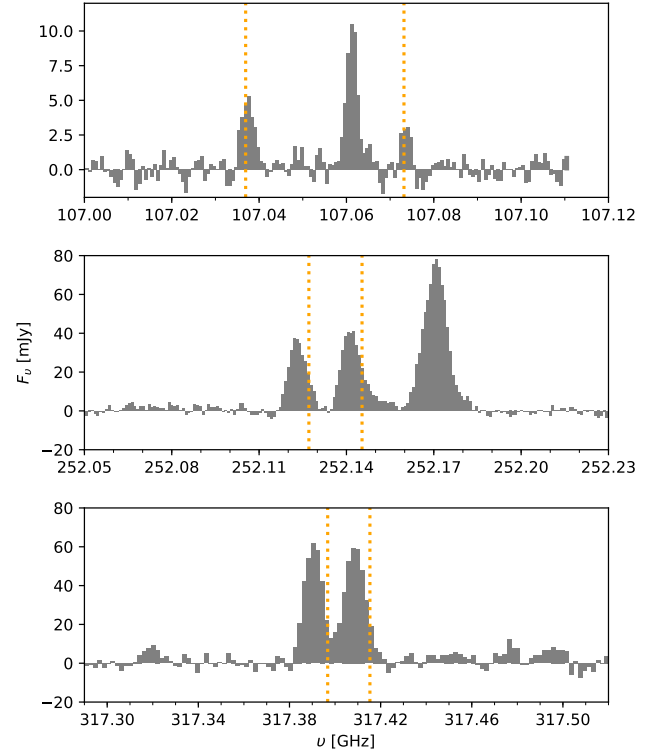


Fig. A.2. Λ -doubling lines observed towards R Dor that were used in the population diagram shown in Fig. 1. The spectra are given in rest frequencies using the v_{LSR} of R Dor of 8.5 km s^{-1} (see text). The vertical dotted orange lines show the predicted line frequencies from the JPL catalogue. The aperture used was twice the size of the band 7 beam. Other lines can be seen in the displayed spectra, which we identified as follows: *top panel*, the $J_{K_a, K_c} = 27_{3,25} - 26_{4,22}$ SO₂ line (rest frequency: 107.060 GHz); and *middle panel*, $v_1, J_{K_a, K_c} = v_1, 7_{4,3} - 2v_2, 8_{5,4}$ H₂O line (tentative identification, rest frequency: 252.172 GHz).

Table A.1. Dates of the observations of W Hya, R Dor, and IK Tau in which we detected OH lines or obtained a meaningful upper limit (UL).

Star	Band	Proj. code	Lines (v, N_J)	Date	Φ
W Hya	4	2017.1.00075.S	$0, 13_{25/2}; 1, 10_{21/2}$	17-10-18	1.0
	6	2016.1.00374.S	$0, 18_{35/2}$	17-07-08	0.7
	7	2016.A.00029.S	$1, 17_{35/2}$	17-11-25	1.1
R Dor	3	2017.1.00582.S	$0, 12_{23/2}$	17-12-18	0.7
	4	2016.1.00004.S	$0, 13_{25/2}$ (UL)	17-09-26	0.5
	6	2017.1.00582.S	$0, 14_{29/2}$	18-01-05	0.75
	7	2017.1.00582.S	$0, 16_{33/2}$	18-01-06	0.75
	7	2015.1.00166.S	$0, 17_{35/2}$	15-08-31	-1.5
IK Tau	6	2017.1.00582.S	$0, 14_{29/2}$	18-01-04	0.1

Notes. We also give the approximate stellar pulsation phase when the observations were acquired (Φ). Negative values denote observations obtained at earlier epochs than the ones we obtained.

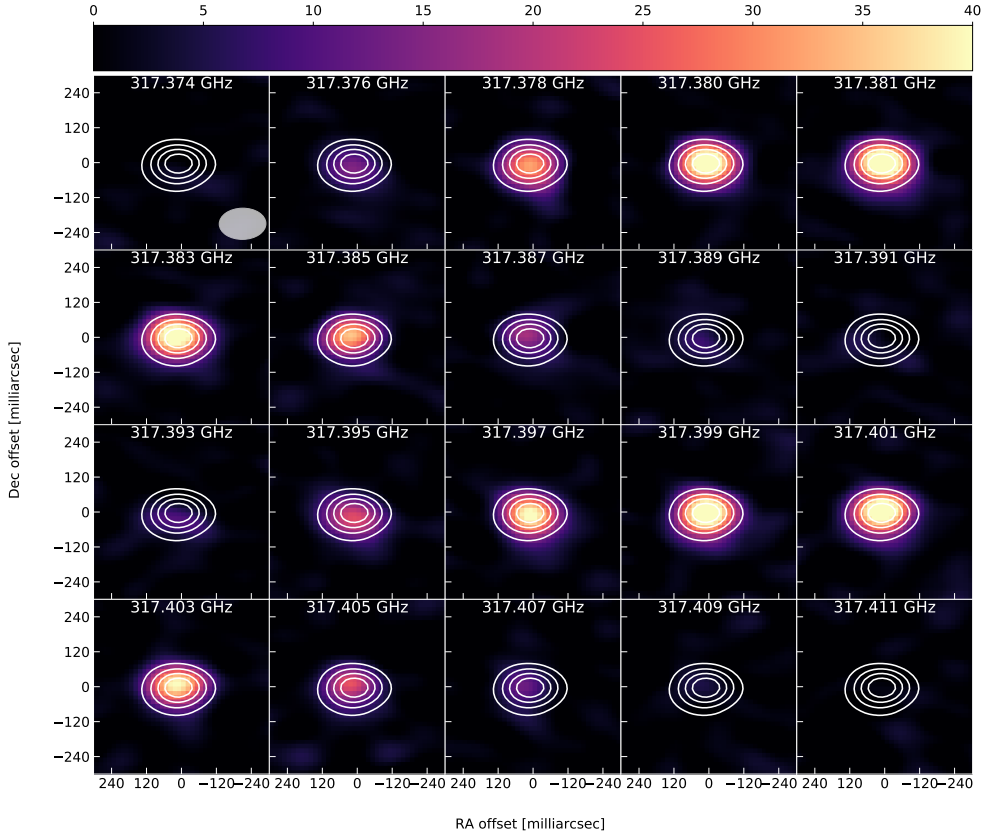


Fig. A.3. Channel map of the Λ -doubling lines within level $v, N_J = 0, 16_{33/2}$ observed towards R Dor. The colour map gives the line intensity in mJy beam^{-1} and the contours show the continuum at levels of 20%, 40%, 60%, and 80% of the peak. We give the observed frequencies not corrected for the source systemic velocity. The full width at half maximum of the reconstructing beam is shown by the grey ellipse in the upper left panel.

Table A.2. Measure differences ($\Delta(f_{\text{JPL}} - f_{\text{OBS}})$) and corresponding uncertainty (σ_{Δ}) between predicted (f_{JPL}) and observed (f_{OBS}) line frequencies.

Star	f_{JPL} (MHz)	v, N_J	$F' - F''$	$\Delta(f_{\text{JPL}} - f_{\text{OBS}})$ (MHz)	σ_{Δ} (MHz)	Channel width (MHz)
W Hya	130078.430	$0, 13_{25}^+$	$13^- - 13^+$	-0.163	0.680	0.977
	130113.648	$0, 13_{25}^+$	$12^- - 12^+$	-0.141	0.667	0.977
	265734.656	$0, 18_{35}^+$	$18^+ - 18^-$	1.359	1.379	0.977
	265765.312	$0, 18_{35}^+$	$17^+ - 17^-$	1.600	1.367	0.977
	333394.344	$1, 17_{35}^+$	$17^- - 17^+$	7.751	1.705	0.977
	333411.688	$1, 17_{35}^+$	$18^- - 18^+$	6.448	1.873	0.977
	130639.219	$1, 10_{21}^+$	$10^+ - 10^-$	-0.619	0.816	0.977
	130654.695	$1, 10_{21}^+$	$11^+ - 11^-$	0.754	0.738	0.977
R Dor	107036.922	$0, 12_{23}^+$	$12^+ - 12^-$	-0.190	0.721	0.717
	107073.172	$0, 12_{23}^+$	$11^+ - 11^-$	-0.273	0.812	0.717
	252127.094	$0, 14_{29}^+$	$14^+ - 14^-$	2.605	1.650	0.977
	252145.359	$0, 14_{29}^+$	$15^+ - 15^-$	2.345	1.645	0.977
	317396.750	$0, 16_{33}^+$	$16^+ - 16^-$	5.941	1.854	1.953
	317415.312	$0, 16_{33}^+$	$17^+ - 17^-$	6.636	1.598	1.953
	351593.094	$0, 17_{35}^+$	$17^- - 17^+$	9.528	1.783	0.488
	351611.656	$0, 17_{35}^+$	$18^- - 18^+$	9.161	1.769	0.488
IK Tau	252127.094	$0, 14_{29}^+$	$14^+ - 14^-$	2.988	1.633	1.953
	252145.359	$0, 14_{29}^+$	$15^+ - 15^-$	2.109	1.660	1.953

Notes. These values are also displayed in Fig. 3. In Cols. 3 and 4 we indicate the transitions specifying the quantum numbers described in the text and the positive or negative parity of the energy levels involved. In the last column we give the channel width of the different spectra.