



HAL
open science

Dynamic Classification of Sensitivity Levels of Datawarehouse Based on User Profiles

Amina El Ouazzani, Nouria Harbi, Hassan Badir

► **To cite this version:**

Amina El Ouazzani, Nouria Harbi, Hassan Badir. Dynamic Classification of Sensitivity Levels of Datawarehouse Based on User Profiles. *International Journal of Database Management Systems*, 2016, 8 (6), pp.13-25. 10.5121/ijdms.2016.8602 . hal-02054453

HAL Id: hal-02054453

<https://hal.science/hal-02054453>

Submitted on 12 Mar 2019

HAL is a multi-disciplinary open access archive for the deposit and dissemination of scientific research documents, whether they are published or not. The documents may come from teaching and research institutions in France or abroad, or from public or private research centers.

L'archive ouverte pluridisciplinaire **HAL**, est destinée au dépôt et à la diffusion de documents scientifiques de niveau recherche, publiés ou non, émanant des établissements d'enseignement et de recherche français ou étrangers, des laboratoires publics ou privés.

DYNAMIC CLASSIFICATION OF SENSITIVITY LEVELS OF DATAWAREHOUSE BASED ON USER PROFILES

Amina El ouazzani¹, Nouria Harbi² and Hassan Badir³

^{1,3}Lab TIC Laboratory, ENSA Tangier, Morocco

²Eric Laboratory, Lyon II University, France

ABSTRACT

A data warehouse stores secret data about the privacy of individuals and important business activities. This makes access to this source a risk of disclosure of sensitive data. Hence the importance of implementing security measures which guarantee the data confidentiality by establishing an access control policy. In this direction, several propositions were made, but none are considered as a standard for access management to data warehouses. In this article, we will present our approach that allows first to exploit the permissions defined in the data sources in order to help the administrator to define access permissions to the data warehouse, and then our system will automatically generate the sensitivity level of each data warehouse element according to the permissions granted to an object in the data warehouse.

KEYWORDS

Data Warehouse, Confidentiality, Profession profile, Crucial information, Traceability

1. INTRODUCTION

A data warehouse DW is a critical factor for high direction looking to make the right strategic decision. It is a database of terabytes data stored historically, from operational systems to have a clear view and a rich source for decision makers. It presents a source of critical business data and the data of customer's privacy such as medical and financial data protected by laws. Consequently, they should not be accessible without access control.

Because of the critical information stored in the DW, it is important to check its privacy. According to [6], confidentiality in the context of DW is considered an important requirement, which must be ensured by an authorization management mechanism which is the specification and execution of access rights in the databases in general and more specifically in DWs.

In general, conventional security requirements are summarized by the acronym CIA (confidentiality, integrity and avail-ability). All other security requirements such as authentication, authorization, access control, etc., can be assigned to these three basic properties. Confidentiality is defined as the absence of disclosure of unauthorized information. Integrity is defined as the absence of the unauthorized modification of information, and availability that ensures the continuity of service [8].

Our goal is to ensure the confidentiality of the DW by access control, since there is no standard that manages this important aspect, and mechanisms of confidentiality specified for OLTP systems cannot be used for the DW because in operational systems, access control is defined on the tables, rows, columns, etc. While in an DW, we have a large number of users with different analysis needs, seeking access to the multidimensional DW [10,11].

In this paper, we focus on the conceptual modelling process of the DW by offering an approach providing access control, based on the job profile of a user who de-scribes its access rights. We use the RBAC access control policy (Role-based Access Control) that focuses on grouping users according to their professions or their roles. With this approach, we are able to classify the DW automatically by generating their sensitivity levels, in order to trace user actions on sensitive data.

2. STATE OF ART AND SYNTHESIS

Recently, a number of DW security models have been proposed. In this section we will organize these research works according to two approaches, the integration of security in the modeling process of the DW, and the DW access control models already in place.

2.1. SECURITY AT THE CONCEPTUAL LEVEL OF THE DW

2.1.1. THE DWS SECURITY BASED ON PERMISSIONS DEFINED AT THE SOURCES

[19] Rosenthal and Sciore (2000) propose a theoretical approach that exploits the access permissions defined in the data source, rather than creating new access mechanisms. They use the rewrite queries to verify that they comply with the restrictions defined in the data sources, as well as creating relational views in order to minimize the risk to infer sensitive data.

[20] Saltor and al. (2002) since there are similarities between the architecture of a federated database and the architecture of a DW, the authors proposed the use of the multi-level access permissions pattern defined for the federated database without being modified to construct a secure DW, this authorization scheme describes the multi-level access rules.

2.1.2. CONFIDENTIALITY OF THE DATA IN A DW DURING THE MODELIZATION

Among the works that have been developed on integrating security into the modelization of warehouses, we find:

[10] Fernandez-Medina and al. (2006) have developed an access control and auditing model (ACA) specific for DW, based on two access management policies: MAC and RBAC. They specify the security rules during the modelization process of a conceptual model, by incorporating the concept of "user profile", which consists of an isolated table containing all user information (identity, classification level: top secret, secret, confidential or unknown). This model remains a purely theoretical model since no solution for its implementation has been proposed.

[22] Villarroel and al. (2006) have defined an OCL extension Object Constraint Language using UML2.0 extension mechanisms to resolve issues of confidentiality; this extension specifies the security requirements of the elements during the conceptual modeling of DWs.

[21] Soler and al. (2008) have used extension mechanisms provided by the CWM (Common Warehouse Meta-model) to extend the relational package and build a star schema, which represents security and verification rules captured during the conceptual phase of the DW.

[11] Trujillo and al. (2009) have developed a methodology consisting of four phases: analysis, modeling, implementation and validation, which covers the five levels of abstraction: requirements analysis, conceptual level, logic level, the physical level and the post-development review, the latter being a new discipline introduced by Lujan and Trujillo (2004). This methodology offers all the security requirements throughout the life cycle of the DW.

[23] Rodriguez and al. (2011) presented an UML 2.0 extension of the activity diagram. This proposition, called BPSec (Business Security Process), allows to define a set of security

requirements (access control, detection of attack risks, non-repudiation, integrity, confidentiality and security audit), which improves the expressiveness of the business processes models, and enables to secure a DW during its development, taking into account this requirement.

[14] Blanco and al. (2015) have developed an automatic MDA architecture to secure DW; this architecture is composed of a logic model and its transformations from the conceptual model using the UML extension and the CWM package. They defined these constraints in the metadata layer that connects the DW with the OLAP tools. This proposition consists of models and transformations.

2.1.3. INFERENCES MANAGEMENT

[1] Triki and al. (2013) proposed a model to secure multidimensional data against the inferences in the conceptual phase, this approach assumes that the DW scheme is already designed. It allows to detect both types of inferences:

- Precise Inference: where the values of the derived data are accurate.
- Partial Inference: where the data values are partially disclosed, meaning that the user can have an idea of the value of data. This approach consists of three steps:

Step 1. A domain expert identifies the sensitive elements to protect by interrogating the DW designer.

Step 2. Build the graph inferences from the class diagram, specifying the elements that are specific or partial inferences.

Step 3. Present the DW with UML annotations highlighting both types of inferences.

[4] Blanco and al. (2010) proposed an approach based on the state diagram to detect inferences on the design level. This proposition focuses on sensitive requests and its evolutions, but they do not take into account to infer the data from the accessible data. The approach is presented as an OLAP security model of 3 states:

- Static model: presents the Fernandez Medina 2007 UML profile specific to DWs, adding a new kind of rule named Joint Rules, which presents the necessary privileges to certain combinations according to a specific grammar.
- Dynamic model: or the transactions-state model that has the objective of enhancing the static model, in order to ensure that confidentiality is not compromised by treating the evolutions of the combinations defined with JR through the application of OLAP operations.
- Session Control: This step makes it of interest to the user sessions to analyze them by checking each event in order to detect any possible inference.

[24] Sweeney (2002) Describes a real data inference case, using a demonstration of the identification of sensitive data based on data crossing of an insurance group, those data supposed anonymous, as well as a voter registration list, which allowed the detection of the name of the former governor William Weld and his medical records, by linking shared attributes. He defined a protection model called k-anonymity including support policies, that allows avoiding inferences, which are:

- Sorting rows of the tables to be published in a random manner in order to not disclose sensitive information.
- Avoid having a row with a unique value in the table to be published.
- Take into account the old version of the data during the construction of the new table.

2.2. THE SECURITY IN THE OPERATING LEVEL OF THE DW

Online Analytical Processing (OLAP) has become increasingly an important component in decision support systems. The OLAP server is supposed to provide access based on authorizations defined for each user. He may refuse the access to data of measure, a dimension, and/or beyond a level in a hierarchy. Access rights can be explicitly specified on tables / columns of the tables of the DW. However, the OLAP server alone cannot protect access to prohibited data. Research works has been done to strengthen the access rights and authorizations of users, and to prevent any malicious user to infer prohibited data from data which he has access to.

[9] Kirkgoze and al. (1997) defined a secure model for DWs which consists in the elaboration of a custom cube with its own dimensions and hierarchies. This model is based on the AMAC management policy. It is an extension of the MAC model that specifies the tasks that the user can perform according to its role within the organization. The advantage of this model is the flexibility in assigning roles to different virtual cubes.

[15] Priebe and Pernul (2000) explored the security problems in the Goal Project, a project that aims to study the integration of a distributed information system. During this research, they have developed a proper method to the OLAP world. This method follows the traditional methodology in the elaboration of databases (analysis of needs, conceptual model, logical and physical), while incorporating the multi-dimensional aspect during the conceptual phase.

[16] Priebe and Pernul (2001) continue their research on the creation of access control mechanisms to ensure data confidentiality, and they have created an access control mechanism in the form of a language expressing the security-related constraints, during the conceptual phase. This is a language based on MDX MulDimensionnale Xpression.

[17] Eavis and Althamimi (2012) presented an authentication framework build on algebra especially designed for OLAP. It is object-oriented and uses query rewrite rules to ensure access to consistent data across all levels of the conceptual model. The process is essentially transparent to the user, a notification is provided in the case where a subset of the original request is returned. The final result is an intuitive and powerful approach for the database authentication that is uniquely adapted to the OLAP field.

[1] Triki and al. (2013) proposed an approach that does not require additional processing after each alimentation phase of the DW. It is based on Bayesian networks in order to protect a DW against inferences; they use a control module, which seeks to prohibit a user to infer protected data from the accessible data by using Min and Max aggregations functions.

2.3. COMPARISON AND SYNTHESIS OF EXISTING WORK

We presented in the previous section, research works that propose solving problems related to the confidentiality of access to the DW. Some approaches seem to be relevant and provide an acceptable level of privacy but still insufficient. In this section, we present a comparative table of these works based on criteria, and followed by a synthesis.

2.4.1. COMPARISON

	Citation	Used Approach	Used Technique	Validation	Inferences Management	Data sensitivity	Traceability of access
Source	[19]	Access. permissions from the source	SQL grant/revoke	no	Yes	no	No
	[20]	Secure DW from Federated Information Systems	No	no	no	no	no
Modelization	[10]	ACA	UML 2.0 - OCL	No	No	No	No
	[22]	UML 2.0	UML 2.0	Non	No	No	No
	[21]	MDA	MDA	Non	No	No	No
	[4]	UML 2.0	the state diagram	Yes	Yes	No	No
	[14]	MDA	UML 2.0 - MDA	Yes	No	No	No
Operations	[1]	protect a DW against inferences	Bayesian networks	Yes	Yes	No	No
	[17]	Authentication Framework		No	No	No	No
	[16]	access control mechanism	MDX	No	No	No	No

Tableau 1 Research Works Comparison

The evaluation of some important approaches that address the confidentiality of DW for the development of a secured multidimensional model, is presented in Table 1 according to several criteria are:

- **Used approach:** the name of the proposed approach.
- **Used technique:** the technologies used in the proposed approach.
- **Transformation between models:** development of a logic model of ED from a conceptual model taking account security in every model.
- **Inferences management:** detection of feasible conclusions from the accessible data.
- **Validation:** implementation of the proposed solution.
- **Data dynamic sensitivity:** automatic determination of data sensitivity level.
- **Traceability of access:** to trace the user transactions on the DW for analysis and decision making.

2.1.5. SYNTHESIS

DW protection against illegal access was felt beyond reasonable doubt since several years [10] [16] [17]. According to the authors [25], modeling the access control of the DW is the process of building an abstract model that needs to be stored in the DW. This model is a representation of the reality or a part of the reality. Following the study of existing works, we found the following:

- The confidentiality of the DW has traditionally been considered in the definitive implementation of a DW [16] [17], however the most recent works [14] [18] consider its inclusion in the development stages which can produce more robust quality solutions, and the system can accommodate these security requirements in a more natural way.
- In the research work [5], the authors proposed an automatic MDA architecture based on the UML extension to secure a DW, but the question that arises in this case is: What is

the use of precisising the security level in the user profile as well as for the elements of the DW since the permissions are specified.

- The majority of research works, especially those involved in the conceptual modeling phase relied on the CWM meta-model, in order to develop a secure DW. Knowing that the CWM model is based on three standards, namely UML, MOF and XMI to properly represent all security and audit rules defined in the conceptual modeling of DWs.
- Most of the works are modeling the access control based on MAC and RBAC policies, while the user profile is considered an isolated table that contains the necessary data for a static access of a user without taking account the priorities of the user authenticated. An MDA architecture for an automatic secure conception of a DW is applied in [14, 13], but the two approaches were unable to understand the safety rules that are complex.
- Although the permissions present the main axis to en-sure confidential access to the warehouse, however, the absence of a standard that supports the accuracy of these permissions can cause inconsistencies and inferences as consequences. In this sense, we find the work of [2], which proposed the use of the permissions schema de-fined for federated databases without any modification to build a secure DW, and [3] that propose rewriting requests in order to verify that they comply with the restrictions defined in the sources.
- Some authors [19] [20] proposed to make the access control model in the DW, from data sources, while others [16] [26] have considered this proposition as difficult since the source data arise from different systems (with different policies). And operational systems use the relational model while the OLAP systems use the multidimensional model.
- Also note that the concept of inference was cited in several works as an essential element to ensure confidentiality, and whose mastery is crucial. In this sense, there is the work of [1] which proposed an approach that can detect partial and accurate inferences, [4] propose an approach based on the state-diagram to detect inferences in the conceptual phase without considering the possibility of inferences from accessible data. Nevertheless, despite the high risk of inferences, it is not sufficiently taken into account in the conceptual phase.

We find that most of the research works affects the task of classifying data according to their level of sensitivity (very sensitive, sensitive, and confidential) to the data owner. Knowing that according to the role of the user, the data owner assigns a level of data sensitivity in order to access data having the same level of sensitivity or lower. The owner of the DW may then assign a lower level of sensitivity to a critical data. This results, however, a problem of information confidentiality loss. In addition, the permissions defined in the sources are not sufficiently exploited to help the owner well determine the permissions of a DW user. In the next section, we propose an approach that overcomes these limitations.

3. DYNAMIC MANAGEMENT OF SECURITY LEVELS

3.1.MOTIVATION

Confidentiality of a DW is based on the access control model that specifies the permissions granted to each user. According to studies cited in the state of the art section, access permission to an object of the DW is granted to a user according to his role. The sensitivity level makes data accessible to the user, with a sensitivity level defined on the object of DW according to its role. Such situation is difficult to manage by the data owner, who can assign a not proper level of sensitivity to an object of DW. What may abuse its confidentiality. For this we propose a different way of defining user permissions by using the permissions defined in the data sources such as suggestions that can help the data owner. Then our access control model can generate the sensitivity level of each object in the DW based on these permissions. This classification will help

us to trace user actions on sensitive data. In the remainder of this section we present the architecture of our contribution, and then we detail our contribution which consists of two stages.

3.2. ARCHITECTURE

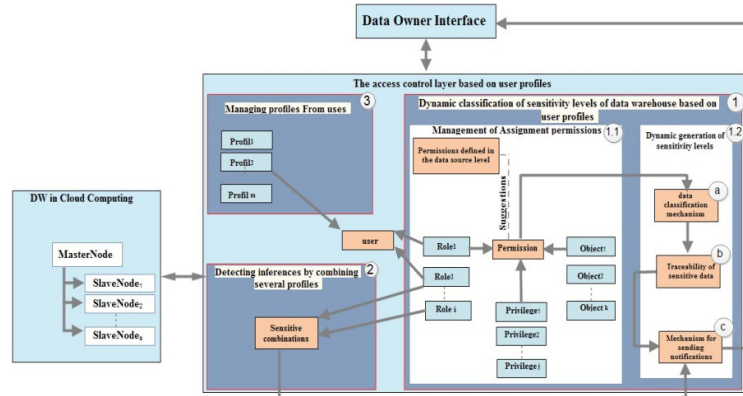


Figure 1 Global Architecture Proposed for Controlling Access to Dws Based on User Profiles

In this section we present the architecture of our proposition which its composites of three parts (Figure 1):

1. Dynamic classification of DW sensitivity levels based on user profiles Consists of defining the access permissions of each user according to his role, and generating the sensitivity level of data.

2. Detecting inferences by combining several profiles allows detecting the sensitive combinations of permissions that can produce inferences, for a user that combines multiple roles.

3. Managing profiles from uses Allows to manage the access to the DW hosted in the Cloud Computing (CC). The objective is to minimize the traffic, and increase the performance of the treatments.

In this article, we present our approach for the first part of our architecture which consists in establishing a DAC model (Dynamic Access Control) based on the PPU (Profession Profile of a User) constituted of several mechanisms (Figure 1):

1.1 Assignment Management of permissions: This is to define the permissions of a role on a data with a given specified privilege, taking into account the permissions defined on the data sources level. And suggest them to the administrator, data owner of the ED, when as-signing permissions.

a. Data classification mechanism: Automatic generation of data sensitivity levels based on defined permissions.

b. Traceability of sensitive data: Is a mechanism to trace user actions on the data with a high level of sensitivity.

c. Sending alerts Mechanism: Depending on user access traceability mechanism, our alert system can send notifications to the administrator during an attempted violation of permission on a sensitive data.

This part of our architecture, that allows managing dynamically of sensitivity levels of DW based on user profiles, is presented in a meta-model form. It's an extension of meta-model CWM (Common Warehouse Meta-model) and presents the user's profession profile. It contains five classes considered the core of our contribution (Figure 2):

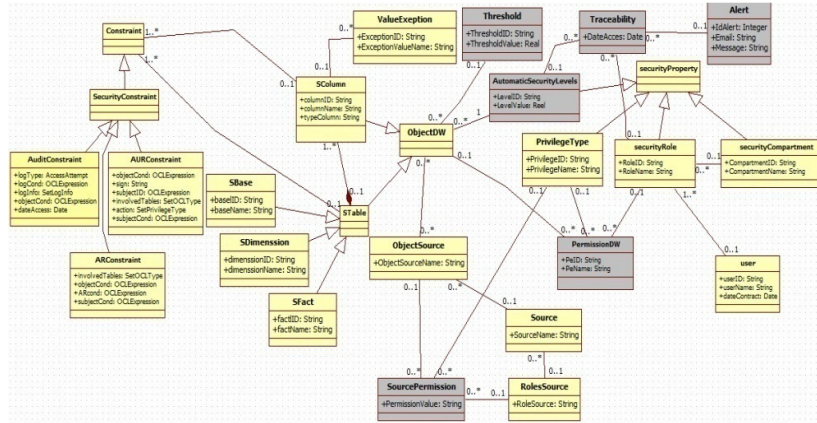


Figure 2 Meta-Model Proposed for Managing Dynamically the Sensitivity Levels of DW Based on User Profiles

- **Permission DW:** present the permission of access to a role with a specific privilege on an object of the DW.
- **Source Permission:** for each object in the DW, we precise the object and the source permission.
- **Automatic Security Levels:** generation of the level of sensitivity of an object according to the defined permissions.
- **Threshold:** Specified by the data owner for each object, to define the sensitive data.
- **Traceability:** according to the sensitivity level of the object, we trace the actions made on sensitive data.
- **Alert:** sending alerts allows claiming an attempt of unauthorized access to a sensitive data by a user.

3.3.DYNAMIC MANAGEMENT OF DW SENSITIVITY LEVELS BASED ON USER PROFILES

Our solution is structured following two parts:

3.3.1. MANAGEMENT OF ASSIGNMENT PERMISSIONS

The permission is a primordial axis in an access control mechanism, the management of these permissions is a difficult task for the administrator. In this phase, we propose to use the permissions defined in the data sources as suggestions that will help the data owner to well define the permission of a role on an object in the DW according to a given privilege $P(R_i, Pr_j, O_k)$ where :

- **P:** Permission (0, 1).
 - **R_i:** Role of the user.
 - **Pr_j:** Privilege permission (Read, Write, Modification).
 - **O_k:** Object of the DW (Table fact, dimension, column, column value).
- Each role belongs at a hierarchical level:

	R ₁	R ₂	R ₃	R ₄
N ₁	✖			
N ₂		✖		
N ₃				✖
N _i		✖		

R : Role
N : hierarchical level

- A user can have one or more roles.

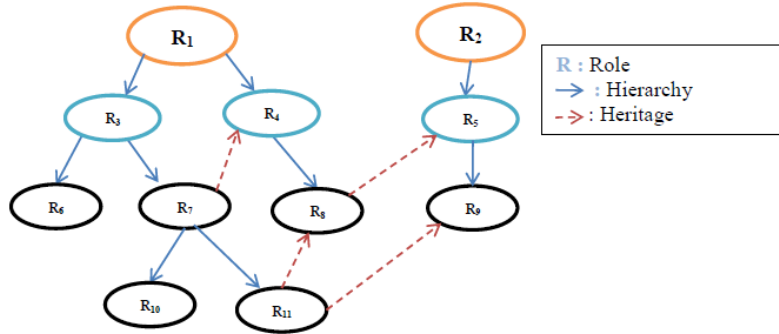
	R ₁	R ₂	R ₃	R _i
U ₁	⊗			
U ₂		⊗	⊗	
U ₃			⊗	⊗
U _m		⊗		

U : User
 R : Role
 O : Object

- The role can consult one or more objects.

	R ₁	R ₂	R ₃	R ₄	R _i
O ₁	1	1	0	0	1
O ₂	1	1	1	1	0
O ₃	0	0	0	0	1
O _k	1	0	0	0	1

- A role can inherit permissions from one or more roles.



According to our meta-model, each object of a DW is presented by the class "ObjectDW" which can be a fact, a dimension, a base, a column or a value of a column. In order to help the owner to determine the permissions of an "ObjectDW", our system suggests the source permissions of an "ObjectDW" to help the owner in the determination permissions phase of the DW. The "Object Source" class presents the corresponding object of an "Object DW" in the "Source" database for each role source "Role Source" by viewing the permissions granted in the source "Source Permission".

3.3.2 DYNAMIC GENERATION OF DATA SENSITIVITY LEVELS

The sensitivity level of an object o is determined by the number of roles that have permission to read it, relative to the total number of roles in each hierarchical level. In order to automatically generate a percentage that presents the sensitivity level of object o, our system is based on the following rules:

- The roles are grouped in the set $R = \{r_1, r_2, \dots, r_i\}$
- Each role belongs to a hierarchical level Well-defined $N = \{1, 2, \dots, n\}$ Where P is the total number of hierarchical levels.
- Each hierarchical level has a coefficient $C\{N\} = N$
- Each role belongs to a hierarchical level $H = \{h_1, h_2, \dots, h_p\}$
- A role may inherit access rights of another role.
- The objects in the DW are grouped in the set $O = \{o_1, o_2, \dots, o_k\}$

- $\{R_i, Pr_j, O_k\} = \{0, 1\}$, With Pr_j is a consultation.
- The object consulted by several roles is less sensitive than the object that is accessed by a small number of roles. The sensitivity level is calculated as a percentage.

The relationship that allows calculating the sensitivity level is as follows:

$$\text{The sensitivity level (\%)} = \left[1 - \frac{\sum_1^n \left(\frac{\sum P(O_k)}{\sum R_j} \right) \times C_i}{CT} \right] \times 100 \text{ Such as:}$$

- $\sum (P(O_k))$: The sum of the roles in a hierarchical level i which have the right to consult an object.
- $CT = \sum_1^n C_i$: The sum of the hierarchical levels coefficients.
- $\sum R_j$: The sum of roles in a hierarchical level.
- C_i : The Coefficient of a hierarchy Level i.

The following algorithm presents the proposed method for defining the sensitivity level of each object in the DW:

ALGORITHM DW Classification

Input: P: Total number of Hierarchical Levels
 OT: Total number of warehouse objects

Output: SL []: Table of sensitivity levels

Begin

```

double [] SL = newdouble [OT+1];
int n = 1, h = 0, CT=0;
double[] C = newdouble[P+1];
double[][] PP = newdouble[P][OT];
double[] PK=newdouble[OT];

While(n<=P){
    C[n] =n;
    CT = (int) (CT + C[n]);
    n++;
}
While(h<P){
    For(int k=0; k<OT; k++){
        PP[h][k] = Permissions(h,k)*C[h];
        PK[k] =PK[k] + PP[h][k];
    }
    h++;
}
h=1;
while(h<=P){
    for(int k=1; k<OT+1; k++){
        SL[k]=(1-(PP[h][k]/(double)CT))*100;
        System.out.println("Sensitivity level of the object ["+k+"] is " + SL[k] + " %");
    }
    h++;
}
return SL; }
    
```

End.

The loop one of our algorithm allows to calculate the coefficient of each hierarchical level which is the increasing order number of the levels. The loop two uses the function "Permissions (h, k)" for determiner the number of roles that have permission to read an object O, multiplied by the hierarchical level coefficient. And the loop three obtains a percentage that presents the sensitivity level of the object k as depending on the number of roles that have permission to read the object, the hierarchical levels of the roles and their coefficients.

3.3.2.1 CHOICE OF THRESHOLDS

Each object of the DW has a threshold. This is a variable parameter (adjustment cursor of the sensitivity level), which depends on the context of the company such as:

- Activity type.
- Period (crisis, war).
- Events (internal or external).
- Business strategy

The sensitive data of an object of the DW are the data whose sensitivity level is greater than or equal to the threshold of this object.

3.3.2.2 TRACEABILITY AND ALERT

In order to trace user actions on sensitive data, and send alerts to a data owner to inform them of attempts violation permissions, our system is based on sensitivity levels generated. Thus, traceability allows tracing the actions of the users on the sensitive data, whose sensitivity level exceeds the threshold specified by the data owner. Then our system sends an alert to the owner if the action is an attempt to violate the permissions. The figure 3 clarifies how our system treats the user's request:

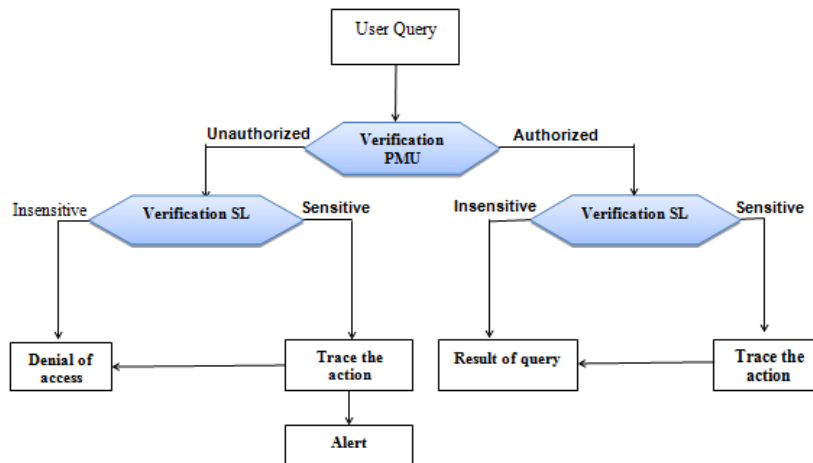


Figure 3 Tractability and alert

- If the requested data are allowed, according to the user's profile, the classification module checks their sensitivity level. If a data item is sensitive, the action will be plotted in the traceability class of our meta-model, and the user will receive the result of the requested query. If the requested data are not sensitive the user receives the result without plotting the action.
- If the requested data are not allowed according to the user's profile, the classification module checks their level of sensitivity. If a data is sensitive, the owner of the data

receives a notification containing the details of the attempted violation of access permissions, in order to react. And of course access will be denied.

4. CONCLUSION

Because of the critical information stored in the DW, it is important to check its privacy. The confidentiality in the context of DW is considered an important requirement, which must be ensured by an authorization management mechanism which is the specification and execution of access rights in the databases in general and more specifically in DWs. In this study allowed us to see the major problems of the confidentiality of the data in the warehouse. To reduce these risks, we have proposed a solution based on the user profile, which consists in the definition of access permissions according to the user role using the access rights defined in the sources, generate the level of sensitivity of each object in the DW according to these permissions, trace the access and detect violation attempts of access rights on a sensitive data (a data with a high level of sensitivity). The objective of this solution is to reduce the vulnerability of the data in a DW, and help the owner of the DW to well manage the access control of the users.

5. PERSPECTIVES

The results show that the research prospects in this direction are numerous, however we have fixed three perspectives that we see interesting in the context of this work, which are:

- Make in practice our approach: to develop an application example.
- Implement our approach in a CC environment: Migration data warehouses to CC should improve satisfaction of users and increase productivity, which requires a high performance. From the moment that a data will be entrusted to an external service provider, the establishment of an access control mechanism should not increase the burden of processing, because the aim is to have an evolutionary and productive system which data are well protected against prohibited access.
- Detect inferences by combining accessible data: The detection of inferences by the combination of data, has not taken much interest in researchers, despite its importance for data warehouses that use multiple data sources. Queries that use the combination of several multidimensional elements tend to be more sensitive than data separately. These combinations must be detected in order to avoid the inference of unauthorized data.

REFERENCES

- [1] Triki, S., H. Ben-Abdallah, O. Boussaid et N. Harbi (2013). Sécurisation des entrepôts de données: de la conception à l'exploitation. Rapport de thèse.
- [2] Saltor, F., M. Oliva, A. Abello, et J. Samos (2002). Building secure data warehouse schemas from federated information systems.
- [3] Rosenthal, A. et S. Sciore (2000). View security as the basis for data warehouse security. In DMDW (p. 8).
- [4] Blanco, C., E. Fernandez-Medina, J. Trujillo, et J. Jurjens (2010). Towards the secure modelling of olap users behaviour.
- [5] Moussa, R. et H. Badir (2013). Data warehouse systems in the cloud: rise to the benchmarking challenge. Journal International of Computers and Their Applications, 245.
- [6] Devbandu, P., Stubblebine, S.: Software Engineering for Security: a roadmap. In: Finkelstein, A. (ed.) The Future of Software Engineering, pp. 227239. ACM Press, New York (2000)
- [7] Inmon, H.: Building the Data Warehouse, 3rd edn. John Wiley and Sons, USA (2002)
- [8] Landwehr, C.E.: Computer security. Int. Journal of Information Security 1(1), 13 (2001)
- [9] Kirkgoze, R., N. Katic, M. Stolba, et A. Tjoa (1997). A security concept for olap. Proceedings of the 8th International Workshop on Database and Expert System Applications (DEXA97), 619626.

- [10] Fernandez-Medina, E., J. Trujillo, R. Villarroel, et M. Piattini (2006). Access control and audit model for the multidimensional modeling of dws. *Decision Support Systems*, 12701289.
- [11] Trujillo, J., Soler, E., Fernndez-Medina, E., and Piattini, M. (2009). A UML 2.0 profile to define security requirements for Data Warehouses. *Computer Standards and Interfaces*, 31(5), 969-983.
- [12] Abraham, A., Mauri, J. L., Buford, J., Suzuki, J., and Thampi, S. M. (2011). *Advances in Computing and Communications, Part I: First International Conference, ACC 2011, Kochi, India, July 22-24, 2011. Proceedings (Vol. 1)*. Springer Science and Business Media.
- [13] Inmon , 1991 *Building the data warehouse*
- [14] Blanco, C., de Guzm, I. G. R., Fernndez-Medina, E., and Trujillo, J. (2015). An architecture for automatically developing secure OLAP applications from models. *Information and Software Technology*, 59, 1-16.
- [15] Priebe, T. et G. Pernul (2000). Towards olap security design - sur-vey and research issues. *Proceedings of the 3rd ACM International Workshop on Data Warehousing and OLAP (DOLAP00)*, 3340.
- [16] Priebe, T. et G. Pernul (2001). A pragmatic approach to concep-tual modeling of olap security. *Proceedings of the 20th Interna-tional Conference on Conceptual Modeling (ER01) 2224*, 311324.
- [17] Eavis, T. et A. Althamimi (2012). Olap authentication and autho-rization via queryre-writing. *The Fourth International Conference on Advances in Databases, Knowledge, and Data Applications*, 130139
- [18] Rodriguez, A., E. Fernandez-Medina, J. Trujillo, et M. Piattini (2011). Secure business process model specification through a uml 2.0 activity diagram profile.
- [19] Rosenthal, A. et S. Sciore (2000). View security as the basis for data warehouse security.
- [20] Saltor, F., M. Oliva, A. Abello, et J. Samos (2002). Building se-cure data warehouse schemas from federated information systems.
- [21] Soler, E., Stefanov, V., Mazon, N.J.: *Towards Comprehensive Requirement Analysis for Data Warehouses: Considering Security Requirements*, pp. 104111. IEEE, Los Alamitos (2008)
- [22] Villarroel, R., E. Fernandez-Medina, et M. Piattini (2006). A uml 2.0/ocl extension for designing secure data warehouses. *Journal of Research and Practice in Information Technology* 38, 3143. 23
- [23] Rodriguez, A., E. Fernandez-Medina, J. Trujillo, et M. Piattini (2011). Secure business process model specification through a uml 2.0 activity diagram profile. 24
- [24] Sweeney, L. (2002). k-anonymity: A model for protecting privacy. 25
- [25] Khajaria, K., and Kumar, M. (2011). Evaluation of Approaches for Modeling of Security in Data Warehouses. In *Advances in Com-puting and Communications*(pp. 9-18). Springer Berlin Heidelberg. 26
- [26] Fernndez-Medina, E., Trujillo, J., Villarroel, R., and Piattini, M. (2007). Developing secure data warehouses with a UML extension. *Information Systems*, 32(6), 826-856.