



**HAL**  
open science

## Identification of spatial and temporal contributions of rainfalls to flash floods using neural network modelling: case study on the Lez basin (southern France)

T. Darras, V. Borrell Estupina, L. Kong-A-Siou, B. Vayssade, A. Johannet, S. Pistre

### ► To cite this version:

T. Darras, V. Borrell Estupina, L. Kong-A-Siou, B. Vayssade, A. Johannet, et al.. Identification of spatial and temporal contributions of rainfalls to flash floods using neural network modelling: case study on the Lez basin (southern France). *Hydrology and Earth System Sciences*, 2015, 19 (10), pp.4397–4410. 10.5194/hess-19-4397-2015 . hal-02052174

**HAL Id: hal-02052174**

**<https://hal.science/hal-02052174>**

Submitted on 24 Feb 2020

**HAL** is a multi-disciplinary open access archive for the deposit and dissemination of scientific research documents, whether they are published or not. The documents may come from teaching and research institutions in France or abroad, or from public or private research centers.

L'archive ouverte pluridisciplinaire **HAL**, est destinée au dépôt et à la diffusion de documents scientifiques de niveau recherche, publiés ou non, émanant des établissements d'enseignement et de recherche français ou étrangers, des laboratoires publics ou privés.



# Identification of spatial and temporal contributions of rainfalls to flash floods using neural network modelling: case study on the Lez basin (southern France)

T. Darras<sup>1,2</sup>, V. Borrell Estupina<sup>2</sup>, L. Kong-A-Siou<sup>3</sup>, B. Vayssade<sup>1</sup>, A. Johannet<sup>1</sup>, and S. Pistre<sup>2</sup>

<sup>1</sup>École des mines d'Alès, LGEI, 6 avenue de Clavières, 30319 Alès CEDEX, France

<sup>2</sup>Université Montpellier – Hydrosiences Montpellier, MSE, 2 Place Eugène Bataillon, 34095 Montpellier CEDEX 5, France

<sup>3</sup>MAYANE, 173 chemin de Fescau, 34980 Montferrier-sur-Lez, France

Correspondence to: A. Johannet (anne.johannet@mines-ales.fr)

Received: 25 February 2015 – Published in Hydrol. Earth Syst. Sci. Discuss.: 8 April 2015

Revised: 27 July 2015 – Accepted: 29 September 2015 – Published: 30 October 2015

**Abstract.** Flash floods pose significant hazards in urbanised zones and have important implications financially and for humans alike in both the present and future due to the likelihood that global climate change will exacerbate their consequences. It is thus of crucial importance to improve the models of these phenomena especially when they occur in heterogeneous and karst basins where they are difficult to describe physically. Toward this goal, this paper applies a recent methodology (Knowledge eXtraction (KnoX) methodology) dedicated to extracting knowledge from a neural network model to better determine the contributions and time responses of several well-identified geographic zones of an aquifer. To assess the interest of this methodology, a case study was conducted in southern France: the Lez hydrosystem whose river crosses the conurbation of Montpellier (400 000 inhabitants). Rainfall contributions and time transfers were estimated and analysed in four geologically delimited zones to estimate the sensitivity of flash floods to water coming from the surface or karst. The Causse de Violsle-Fort is shown to be the main contributor to flash floods and the delay between surface and underground flooding is estimated to be 3 h. This study will thus help operational flood warning services to better characterise critical rainfall and develop measurements to design efficient flood forecasting models. This generic method can be applied to any basin with sufficient rainfall–run-off measurements.

## 1 Introduction

Flash floods are rapid (they rise in a few hours) and intense floods that occur within small basins. Our current lack of understanding of these floods constitutes a great societal challenge because of their socioeconomic and environmental impacts (Gaume and Bouvier, 2004; Llasat et al., 2010). Over the past 20 years, flash flooding in south-eastern France has caused more than 100 fatalities and several billion euros in property damage. In karst basins, the event of June 2010, in the river Var (southern France) caused 27 casualties and more than one billion euros of damages. Early warning is also a priority (Borga et al., 2011; Price et al., 2011) that could be improved by using forecast models. In recent decades, considerable efforts have been devoted to improving our understanding and forecasting of flash flooding (Gaume et al., 2009; Marchi et al., 2010). In the literature three aspects were investigated: (i) the rain event (or other cause of rising water), (ii) run-off genesis, and (iii) surface and underground geomorphologic and geologic settings that channel the water transfer toward the outlet.

Mediterranean rain events often occur at the meso-scale (Rivrain, 1997) and generate intense localised rainfall. For this reason, Le Lay and Saulnier (2007), Cosandey and Robinson (2000), and Tramblay et al. (2010) show that flash-flood generation is controlled by spatial and temporal variability of rainfall and initial soil-moisture conditions. Moreover, sensitivity to rainfall heterogeneity is elevated in small watersheds, which are locations of flash flooding (Krajewski et al., 1991; Corradini and Singh, 1985; Raynaud et

al., 2015). The hydrodynamic behaviour of hydrosystems subject to intense rain events depends on soil moisture as well as geology, tectonics, and land use (Anctil et al., 2008; Nikolopoulos et al., 2011). Moisture content estimation at the watershed scale has proven beneficial for discharge prediction (Kitanidis and Bras, 1980; Parajka et al., 2006; Wooldridge et al., 2003). Nevertheless, soil-moisture measurements are highly dependent on field measurement techniques; they provide relative spatial and temporal distributions (Katul et al., 2007; Lauzon et al., 2004) rather than absolute values.

In karst systems, underground water obviously plays a significant role in flooding (Bailly-Comte et al., 2012; Fleury et al., 2013). Nevertheless, karst systems are intrinsically heterogeneous and their hydrodynamic behaviour generally differs from one system to another (Bakalowicz, 2005). However, even if the contribution of karst groundwater to flash flooding is assumed to be negligible because of its longer response time (Borga et al., 2007; Norbiato et al., 2008), other studies emphasise the considerable contribution of groundwater to flash flooding (Bailly-Comte et al., 2012). Faced with the question of the role of karst groundwater in flash flooding, this study investigates a method for estimating spatialised contributions from different parts of a heterogeneous aquifer.

Because of the lack of knowledge regarding the various hydrodynamic behaviours involved in karst systems, a generic black-box method seems to be adequate. For this reason, neural network modelling seems to be a relevant method (Kong-A-Siou et al., 2011, 2014; Kurtulus and Razack, 2007). For this purpose, in recent decades, the multilayer perceptron has been increasingly used in the field of hydrology (Maier and Dandy, 2000; Toth, 2009). These models have been effective in identifying the rainfall–run-off relationship (Hsu et al., 1995). Their ability to forecast flash floods (Toukourou et al., 2011; Artigue et al., 2012) and model karst system behaviour have also been demonstrated (Kong-A-Siou et al., 2011). To model hydrosystem behaviour efficiently, neural networks need relevant data sets as input and output variables, and rigorous application of regularisation methods (Abrahart and See, 2007; Bowden et al., 2005; Fernando et al., 2009). Rainfall data are obvious inputs; in addition (Anctil et al., 2008), demonstrated that soil-moisture content observations improve prediction performance. Even so, selection of relevant variables to represent moisture content is a difficult task (Darras et al., 2014a). Data quantity and quality are the major limiting factors in the application of neural networks to hydrological modelling (Pereira Filho and Santos, 2006). Because of noisy data, neural networks used to model natural phenomena are sensitive to overfitting; the use of regularisation methods to deal with the bias–variance trade-off is thus mandatory (cf. Sect. 3.1.2). Kong-A-Siou et al. (2014) compared neural network models and VENSIM software to simulate flooding or drought; they concluded that neural modelling performed better for extreme

events, whereas VENSIM worked better for intermediate, more complex events. This statistical approach has been used to propose some interesting hydrological models. Artigue et al. (2012) has proposed a combination of linear and non-linear modelling in the same model. Corzo and Solomatine (2007) have proposed a combination of specialised neural networks to represent isolated processes involved in flood genesis. These methods provided efficient forecasts on rapid hydrodynamic watersheds. Moreover, recent advances have proven that the use of these statistical tools can improve the currently available knowledge of a system. Based on these recent scientific findings, the Knowledge eXtraction (KnoX) methodology was developed to describe contributions and time transfers of spatialised rainfall in any basin. This paper thus proposes to apply this methodology to better apprehend both surface and groundwater processes at the origin of flash flooding in a karst basin. To this end, we focus on the Lez karst hydrosystem which feeds the Lez river that flows through the conurbation of Montpellier (southern France) with a population of 400 000. Because of its meteorological and geomorphological setting, the Lez river at the Lavalette station, located at the entrance to the city of Montpellier is the site of flash flooding. In addition, as a karst system, the geomorphological structure of the Lez aquifer is strongly heterogeneous, leading to anisotropic water circulation and highly non-linear hydrodynamic behaviour. Flow rate at Lavalette station includes contributions from perennial karst springs (the most important is Lez spring), temporary karst springs (Lirou spring can be stronger than Lez spring), diffuse karst arrivals, and also run-off.

The scientific challenge of this study is thus to apply neural networks to better quantify processes operating in flash flooding. For this purpose, after the Introduction, Sect. 2 presents a discussion of neural network modelling and the KnoX method. Section 3 is a description of the study area. Section 4 presents the application of the KnoX method to the study area and estimate of contributions and time transfers of spatialised rainfalls to discharge at Lavalette. Section 5 discusses the results and exposes operational and scientific implications. In the conclusion section we discuss innovative perspectives of this generic methodology.

## 2 Artificial neural network modelling for better characterise processes

### 2.1 Neural network design

#### 2.1.1 General presentation

Artificial neural networks are statistical black-box models that use input–output measurements to identify non-linear functions of a system. Basics about neural modelling can be found in Dreyfus (2005), only specific information, mandatory for a comprehensive presentation of this study, will be

provided hereafter. The chosen model is the multilayer perceptron because of its properties of universal approximation and parsimony (Barron, 1993). The universal approximation is the capability to approximate any differentiable and continuous function with an arbitrary degree of accuracy (Hornik et al., 1989). In our study, the multilayer perceptron is a feed-forward model, a finite impulse response model based on Nerrand et al. (1993). Designing a multilayer perceptron consists mainly of selecting input variables and the number of hidden neurons. This determines the number of parameters mechanically; model complexity increases with the number of parameters. The general equation of the function calculated by the feed-forward multilayer perceptron is the following:

$$y^k = g_{\text{NN}} \left( y_p^{k-1}, \dots, y_p^{k-w_y}, \mathbf{u}^k, \dots, \mathbf{u}^{k-w_u-1}, \mathbf{C} \right), \quad (1)$$

where the estimated value of the output at the discrete time  $k$  is  $y^k$ ; the observed value of this variable is  $y_p^k$ ; the input vector is  $\mathbf{u}^k$ ; the non-linear function implemented by the neural network is  $g_{\text{NN}}$ ;  $w_u$  and  $w_y$  are the width of windows used to apply the input time series, they are linked to the length of the vectors  $\mathbf{u}$  and  $\mathbf{y}_p$ ; and  $\mathbf{C}$  is the matrix of parameters of the model, also called “weights”.

As statistical models, neural networks are designed in relation to a database. This database is usually divided into three sets: a training set, a stop set, and a test set. The training set is used to calculate parameters through a training procedure that minimises the mean quadratic error calculated on output neurons. The training is stopped by the stop set (cf. Sect. 2.1.2), and model quality is estimated by the third part of the database: the test set, which is separate from the training and stopping sets. The model’s ability to be efficient on the test set is called generalisation. However, the training error is not an efficient estimator of the generalisation error: the efficiency of the training algorithm makes the model specific to the training set. This specialisation of the neural network on the training set is called overfitting. Overfitting is exacerbated by large errors and uncertainties in field measurements; the model learns the specific realisation of noise in the training set. This major issue of neural network modelling is called bias–variance trade-off (Geman et al., 1992). Usually regularisation methods are used to avoid overfitting; to this end, two regularisation methods were used in this study.

### 2.1.2 Regularisation methods

In the context of this study, the goal of regularisation methods is to minimise output variance. To this end, cross-validation (Stone, 1974) was used as explained in Kong-A-Siou et al. (2012) to empirically select input variables and the number of hidden neurons. Cross-validation thus minimises model complexity and therefore output variance (Schoups et al., 2008).

Another regularisation method is commonly employed: early stopping (Sjöberg et al., 1995). This method stops training before overtraining occurs. A dedicated set, called a stop set, is considered separately from the database.

Working also on the Lez aquifer but considering only underground water at the Lez spring, Kong-A-Siou et al. (2011) applied multilayer perceptron to perform forecast at Lez spring and validated cross-validation as a useful method to select the complexity of the model. Moreover, Kong-A-Siou et al. (2012), for the same basin, focussed on regularisation methods (early stopping and weight decay). They conclude that early stopping used in conjunction with cross-validation was efficient.

Nevertheless these results, obtained with a 16-year daily database cannot be applied directly in the present study because the flash-flood database is too limited to extract definitively another set from the database (the stop set). Thus, to apply early stopping without stop set, a pre-defined maximum number of training iterations were selected to stop training before the complete convergence and, by this way, avoid overtraining. Nevertheless, for this purpose, the selection of the optimal number of training iterations is done using a stop set. Then afterwards, the model is run without the stop set using this pre-defined optimal number of training iterations. In the first stage, the database, not including the test set, was divided into  $S$  subsets corresponding to flash-flood events. Training was performed on  $S-1$  subsets with 50 different parameter initialisations. The remaining subset was used as a stop set. Each subset was used in turn as a stop set. For each trial the training iteration with the minimum mean quadratic error over the stop set is set aside. The median of these numbers of iterations was calculated for all stop sets and all initialisations and selected as the optimal number of training iterations. In a second stage, this optimal number of training iteration (12 iterations) is used in all the following without further utilisation of a stop set.

In this study, parameters are iteratively calculated using the Levenberg–Marquardt algorithm (Hagan and Menhaj, 1994).

It is also well-known that model performance depends strongly on the parameters initialisation. To define a reliable simulation independent from the initialisation, Darras et al. (2014b) proposed to establish an ensemble of 50 models trained from different initialisations. The output is calculated at each time step by the median of the 50 outputs. It is well-known that this method can smooth the output of the model; nevertheless this is not a drawback in this study as this method improves the robustness of the model, which is very important to extract information.

## 2.2 Towards knowledge improvement about processes

Even if neural networks generally implement black-box models, several authors have tried to make the model more understandable. For example Johannet et al. (2008) and Jain

and Kumar (2009) demonstrated the possibility of observing physically interpretable information at the output of hidden neurons. Another path would be to exploit parameters values. Several works were done to constrain the model using physical knowledge at the level of the parameter for example to select the best input set, or to select the more physically plausible model (for example the parameters linked to the evapotranspiration input must be positive) (Olden and Jackson, 2002; Kingston et al., 2006). Considering individual parameter value, another goal would be to assess that the neural network model truly performed physical relation (Mount et al., 2013).

Focusing on parameters, the principal difficulty is the sensitivity of their values to the initialisation before training. This dependence can be avoided using statistical treatments as proposed by Kingston et al. (2006). Kong-A-Siou et al., (2013) used a multistep procedure to extract knowledge: (i) proposal of a postulated model that describes the available high-level knowledge about the behaviour of the system to be modelled, (ii) implement a neural model architecture that follows this postulated model: each box of this diagram is implemented using a multilayer perceptron (or a unique linear neuron), (iii) train an ensemble of identical models that differ by their initialisation, and calculate the median of the absolute value of each parameter over the ensemble models (noted as median parameter), and (iv) combine median parameters in a chain of causality to quantify the role of each input variable. Compared to other works that calculate a similar parameters chain-based calculation, and looked at constrains at the level of parameters or inputs (Kingston et al., 2006), this method is original because it applies constrains at the level of processes identified in the block diagram (postulated model). Using the block diagram of the postulated model indicates that some processes are possible; others are not. It allows thus for diminishing the number of parameters, and by this way, the complexity of the model, and the multi-finality of parameters value. The sign of the parameter is not important as the product of two negative parameters is positive in the chain of parameters product; for this reason and in order to take profit of the “black-box” capabilities of ANN, we do not want to constrain individual parameters. Kong-A-Siou et al. (2013) applied this method to the Lez karst aquifer to evaluate the groundwater contributions from different geographic zones to the discharge at the outlet. This methodology is called KnoX. Its accuracy was assessed on a fictitious model, whose processes were perfectly known, before being applied to a real aquifer.

In this study we propose to apply the KnoX method to quantify spatially and temporally the effect of different processes, effective in a heterogeneous aquifer, to flash floods. The considered gauge station is Lavalette at the entrance of Montpellier, the time step is an hour. Regarding the case study on the Lez basin, it is very different from the work made by Kong-A-Siou et al. (2013), as in the present study we considered flash flooding at Lavalette (maximum dis-

charge equal to  $480 \text{ m}^3 \text{ s}^{-1}$ ) having an important surface water contribution; whereas the previous work investigated daily run-off of underground water at the Lez spring (maximum discharge inferior to  $20 \text{ m}^3 \text{ s}^{-1}$ ). In the present study we investigate the improvement of knowledge about karst and non-karst (surface) flooding processes.

## 2.3 Performance criteria

Several criteria were used to model selection and performance assessment. The first is the Nash–Sutcliffe efficiency, hereafter referred to as  $R^2$  (Nash and Sutcliffe, 1970).  $R^2$  is used to perform model selection using cross-validation. The second is specifically flood oriented: the synchronous percentage of peak discharge, or  $S_{PPD}$ . The last, a purely temporal aspect, is the delay between measured and simulated flood peak, hereafter referred to as  $P_d$  (peak delay).

### 2.3.1 Nash–Sutcliffe efficiency

The Nash–Sutcliffe efficiency is the most widely used criterion for evaluating hydrological models. It is equivalent to the  $R^2$  determination coefficient:

$$R^2 = 1 - \frac{\sum_{k=1}^n (y_p^k - y^k)^2}{\sum_{k=1}^n (y_p^k - \bar{y}_p^k)^2}, \quad (2)$$

where  $k$  is discrete time,  $n$  the number of time steps used to calculate  $R^2$ ,  $y^k$  the simulated discharge,  $y_p^k$  the measured discharge, and  $\bar{y}_p^k$  is the measured mean discharge. The Nash score is not really convenient for assessing flood simulations as it takes into account errors on the whole event and not specifically on the peak. For this reason, other criteria were proposed.

### 2.3.2 Synchronous percentage of peak discharge

Synchronous percentage of peak discharge is especially designed for the evaluation of flash-flood modelling. It is the ratio of measured and simulated discharges at the time of the observed peak discharge:

$$S_{PPD} = 100 \frac{y_p^{k_p^{\max}}}{y_p^{k_p^{\max}}}, \quad (3)$$

where  $k_p^{\max}$  is the time of the measured peak discharge.

### 2.3.3 Delay between measured and simulated flood peaks

The delay between simulated and measured peak discharge is calculated using Eq. (4). A positive delay means a retarded simulated peak discharge. Conversely, a negative lag means

advanced simulated peak discharge. The peak delay can be expressed as

$$P_d = k^{\max} - k_p^{\max}, \quad (4)$$

where  $k^{\max}$  is the time of the simulated peak discharge.

### 3 Case study: the Lez aquifer

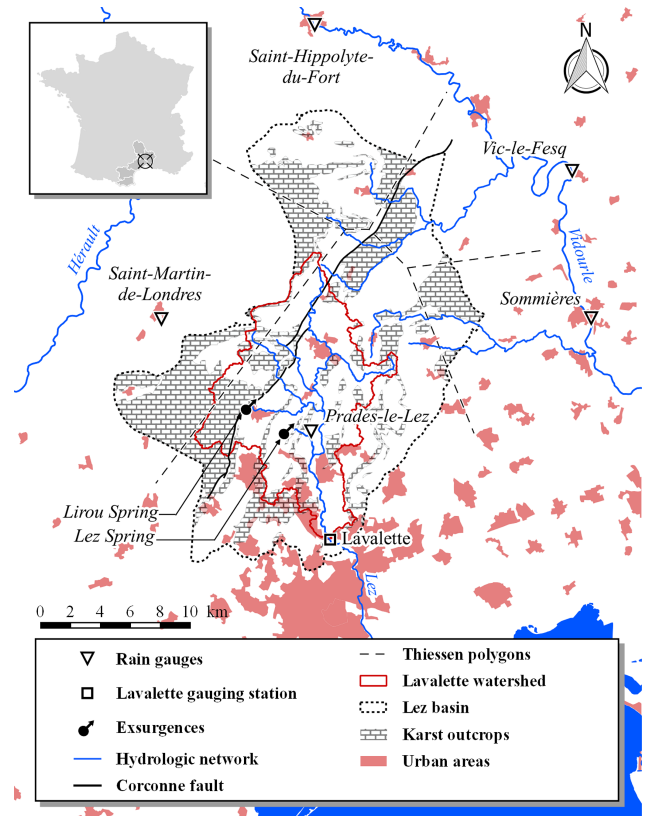
#### 3.1 Lez hydrosystem

The Lez aquifer is a Mediterranean karst system located in south-eastern France upstream of Montpellier (Fig. 1). Its extent is estimated at about 380 km<sup>2</sup> (Bérard, 1983). The Lez spring is the main outlet of this aquifer, hereafter referred to as the “basin”. Another major spring is the Lirou spring, which flows only during rain events. Both springs feed the Lez river, which crosses Montpellier and its conurbation, an area with a population of about 400 000. The recharge area, composed of karst outcrops and swallow holes, is estimated at about 130 km<sup>2</sup> (Dörfliger et al., 2008). The surface catchment, an area of about 120 km<sup>2</sup>, hereafter referred to as the “watershed”, is defined by its topographic setting at the outlet of Lavalette gauging station. As often with karst systems, geographical areas of the watershed and the underground basin are not superposed. Due to complex geology, the recharge area extends to only a part of the watershed and underground basin. For this reason, the Lez aquifer is considered to be a hydrosystem.

#### 3.2 Geological and tectonic settings

Similar to many karst systems, the Lez hydrosystem is composed of karst and non-karst components. The karst component crops out in the upstream part of the system; it underlies impervious formations in the downstream part. The karst component consists of Cretaceous and Jurassic carbonate rocks. The karst in these formations developed under the current Mediterranean Sea level as a result of the Messinian crisis (Hsü et al., 1973). These formations also crop out widely and form the calcareous plateaus of both the Causse de l’Hortus and the Causse de Viols-le-Fort. The downstream part of the system is composed of Eocene carbonate and clay formations and Tertiary sandstone and conglomerate formations.

Two major tectonic events have affected the geomorphological structure of the Lez hydrosystem. The first was Pyrenean compression, which occurred during the Eocene. This south–north compression led to the formation of east–west trending faults. The second tectonic event was the opening of the Lion Gulf during the Oligocene. This event led to the formation of north–east–south–west sinistral faults, including the Corconne fault that crosses the Lez basin.



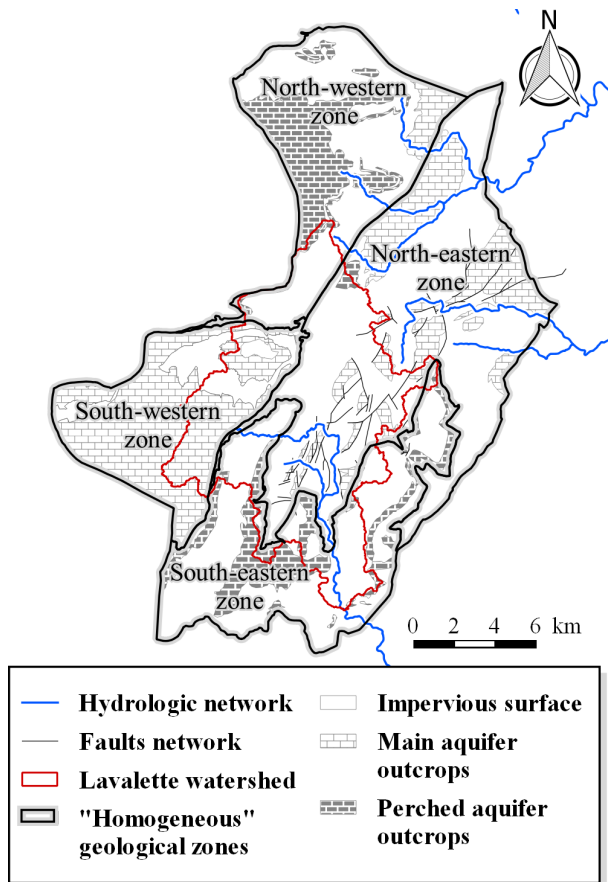
**Figure 1.** Map of the Lez hydrosystem with location of karst outcrops, rain gauges, gauging stations, springs, Causses de Viols-le-Fort and de l’Hortus and of Corconne fault. Boundaries of surface watershed, underground basin and urban zones are also shown.

#### 3.3 Meteorological and hydrogeological setting

The study area is subject to a Mediterranean climate. Mediterranean events often occur at the meso-scale and promote intense and localised rainfall. Daily rainfalls can reach 650 mm, such as one event that occurred in September 2002 in south-eastern France. Such high-volume rainfall events are referred to as Mediterranean episodes.

#### 3.4 Hydrodynamic circulation

Kong-A-Siou et al. (2013) divided the Lez basin into four parts (Fig. 2) to better analyse the rainfall–run-off relationship at the Lez Spring at a daily time step. The east–west division is based on the Corconne fault pathway. On the western side of the basin, the south–north division is based on the Causse de Viols-le-Fort boundary, which is a cropping part of the principal aquifer. On the eastern side of the basin, a south–north division has been drawn based on its geological setting (impervious or non-impervious soils). The Oligocene and Eocene formations define a well-delineated impervious zone in the south-eastern part of the basin. The geological composition of each zone is assumed to be “homogeneous”,



**Figure 2.** Map of the Lez basin: zone boundaries and topographic watershed, impervious and non-impervious formations, faults intensifying infiltration.

which means that the geology within a zone is quite similar and that it differs more from the geology of other zones. Using the KnoX method, Kong-A-Siou et al. (2013) were able to estimate both the water contribution from each “homogeneous” geological zone to the Lez spring discharge and the mean time response. The last study, which was conducted at daily time step, shows the important contribution, more than half, of the north-eastern zone to the discharge of the Lez spring. These contributions are presented in Table 5.

### 3.5 Flash flooding in the Lez basin

Fed by abundant rainfall on the basin (245 mm in few days), the Lez receives contributions from surface watershed and also from underground (karst) basin thanks principally to its tributary: the Lirou river. The Lez can exceed a discharge higher than  $500 \text{ m}^3 \text{ s}^{-1}$  at its entrance to Montpellier. This corresponds to a specific discharge greater than  $4 \text{ m}^3 \text{ s}^{-1} \text{ km}^{-2}$ , based on the size of the surface watershed ( $120 \text{ km}^2$ , see Sect. 3.1), or  $1.3 \text{ m}^3 \text{ s}^{-1} \text{ km}^{-2}$  considering the whole underground basin ( $380 \text{ km}^2$ , see Sect. 3.1). These two simple numbers highlight the need to better understand the

origin of the water, and water circulations during flash floods at the Lavalette station at the entrance to Montpellier.

To this end, two different approaches have been proposed in the literature, using event-based modelling. The first uses data assimilation (Kalman filter) to (i) estimate karst filling at the beginning of the event, (ii) adapt transfer velocity at each time step, and (iii) correct the lack of accuracy of rainfall measurement. Based on these improvements,  $R^2$  of simulation increased from 0.89 to 0.91 for an event in December 2003, and from 0.72 to 0.98 for an event in September 2005 (Table 1). The model is based on the Soil Conservation Service production function coupled with a lag and route transfer function (Coustau et al., 2012). The second approach has operational goals and proposes a graphical method (abacus) to estimate flood peaks from forecast rain features and karst filling (Fleury et al., 2013). Using abacus, authors revised the estimated peak of the September 2005 event down to  $460 \text{ m}^3 \text{ s}^{-1}$  from  $480 \text{ m}^3 \text{ s}^{-1}$ .

Thus, it appears that improved knowledge of karst–river interactions is critical. For this purpose, in the next section we propose to use the KnoX method to estimate the contribution of each zone of the Lez basin to flash-flood events.

## 3.6 Database presentation and analysis

### 3.6.1 Monitoring network

Hourly rainfall data are available at five rain gauges: Saint-Martin-de-Londres, Prades-le-Lez, Sommières, Vic-le-Fesq and Saint-Hippolyte-du-Fort. The French Weather Forecasting Service (Météo France) manages the first two gauges, and the Flood Forecasting Service of the Grand Delta (SPCGD) manages the last three gauges. Only the Prades-le-Lez rain gauge is inside the Lez system, but as pointed out in introduction, it is essential to make use of spatialised rainfall information. In addition, no data at the considered time step is available further south than the Prades-le-Lez rain gauge. Spatial rainfall variability is thus not correctly described in the southern part of the basin. This will limit the reliability of this study regarding the southern zone of the basin. Unfortunately, it is not convenient to use weather radar information in this basin because, due to the distance of the Nîmes radar (50 km), this information is not robust from one event to another and generally underestimate the rainfall value compared to the rain gauge measurements (Marchandise, 2007; Visserot, 2012); also radar information is not available for all events in the database. Discharge data are provided by the Lavalette gauging station managed by an office of the French ministry of ecology and sustainable development (DIREN). Both rainfall and discharge data are available at an hourly time step, which is convenient for flash-flood modelling.

The data suffer from high noise and uncertainty. The uncertainties of discharge measurements have been estimated at around  $\pm 20\%$  for flash floods. The uncertainty of rainfall measurements, can be as high as  $\pm 10$  to  $20\%$  (Marchandise,

**Table 1.** Dates, peak discharges, and mean cumulative rainfalls of flood events contained in the database. Intense events are highlighted by a star and in bold. Mean cumulative rainfall is calculated using a weighted average of the five rain gauges with the Thiessen polygon method.

Events	Dates	Peak discharge ( $\text{m}^3 \text{s}^{-1}$ )	Mean cumulative rainfalls (mm)
1	24–27 August 2002	7	128
<b>2*</b>	<b>8–9 September 2002</b>	<b>112</b>	<b>171</b>
3	8–13 October 2002	45	118
<b>4*</b>	<b>9–13 December 2002</b>	<b>384</b>	<b>245</b>
5	15–18 November 2003	68	86
<b>6*</b>	<b>23–25 November 2003</b>	<b>95</b>	<b>51</b>
<b>7*</b>	<b>1–5 December 2003</b>	<b>438</b>	<b>234</b>
<b>8*</b>	<b>5–7 September 2005</b>	<b>480</b>	<b>144</b>
9	27–31 January 2006	53	117
10	13–15 September 2006	25	147
11	23–26 September 2006	23	85
12	2–7 May 2007	9	88
<b>13*</b>	<b>20–21 October 2008</b>	<b>114</b>	<b>123</b>
<b>14*</b>	<b>21–22 October 2008</b>	<b>104</b>	<b>72</b>
15	1–8 November 2008	31	127

2007). Rainfall and discharge time series are available from 2002 to 2008. Fifteen flood events whose peak discharges exceed  $80 \text{ m}^3 \text{ s}^{-1}$  were selected (Table 2). Events 7 and 8 were the most intense; contrary to other intense events, events 13 and 8 occurred on dry soils.

## 4 Application of the KnoX method to flash flooding at Lavalette

### 4.1 From postulated model to neural network model

As presented in Sect. 2.2, the postulated model represents the schematic high-level information one has about the basin of interest. This a priori knowledge must be expressed using a block diagram and each box of this diagram is implemented using a multilayer perceptron (or a unique linear neuron).

#### 4.1.1 Postulated model

The postulated model describing flash-flood genesis at Lavalette station is based on the work of Kong-A-Siou et al. (2013) as the considered basin is the same (surface and underground). Remember that the primary difference is that flash floods are considered at hourly time steps at the Lavalette station in this study. Using continuous data at daily time steps at the Lez spring, Kong-A-Siou et al. (2013) showed that the north-eastern and north-western zones are the principal contributors to Lez spring discharge. To estimate the contributions of each zone to flooding at Lavalette,

we distinguished both behaviours: surface (rapid if inside the impervious watershed) and underground (slower if infiltrated into karst outcrops or in faults: faults play the role of a drain in impervious parts of the basin inside and outside of the Lavalette surface watershed). Schematically, by looking at the map presented in Fig. 2 and following the previous reasoning, one can propose that the north-western zone would make a minor contribution to flash flooding at Lavalette because it is outside the surface (topographic) basin and because its underground time response is high (Table 5). The south-eastern zone would also have a minor impact because its impervious area is mostly outside the Lavalette watershed. Regarding the south-western and north-eastern zones, it is difficult to propose an a priori quantification. It is thus not easy to estimate the principal contributors to flash flooding. Application of the KnoX method would provide this quantification. The postulated model of the basin behaviour is thus composed of four branches, each corresponding to a zone of the basin, involving surface and groundwater, and feeding a complex mixing process. The postulated model is represented in Fig. 3 in a grey block diagram.

The model used to apply the KnoX method is based on the multilayer perceptron; it follows the postulated model represented in Fig. 3 with four zones contributing to discharge at Lavalette station. As suggested by the KnoX method, to be able to identify the contribution of each zone to the discharge, a linear hidden neuron is added between the inputs and the layer of sigmoid neurons. These neurons are intended to represent rain that falls on each zone; they facilitate the estimate of the time response of water falling in each zone.

#### 4.1.2 Input data

Inputs are mean rainfalls for each zone. These rainfalls are calculated using the Thiessen polygon method. Table 2 shows the weight of each rain gauge for each zone. It highlights the sparse spatial distribution of rainfall information in the south of the basin. Nevertheless, taking into account the importance of the stakes in this zone, and as the goal of this study is to better understand the behaviour of the basin in order to develop well-suited monitoring strategy, we consider the rainfall information sufficient to carry out this study.

## 4.2 Model design

### 4.2.1 Model selection

As presented in Sect. 2.1.2, model selection is done using cross-validation and pre-definite number of training iterations. Ranges of investigation and chosen values of various window width and hidden neurons numbers are provided in Table 3. One can note that the complexity of the model is moderate (small number of hidden neurons). To make the model assessment more reliable on the most intense events 7

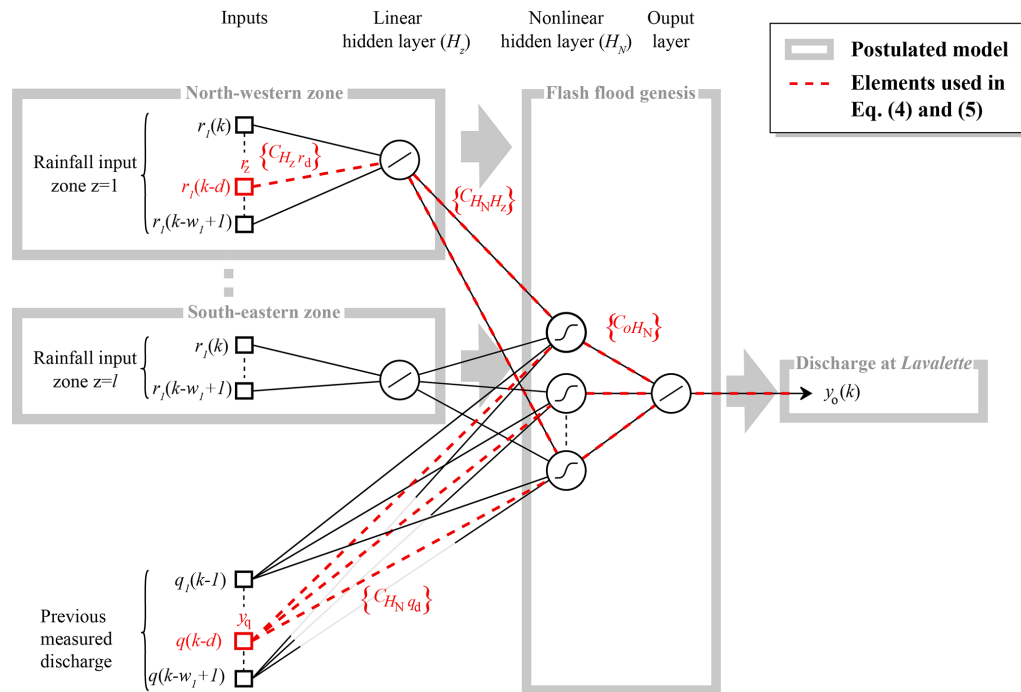


**Table 2.** Percentage of each rain gauge to the rainfall for each zone and for the whole Lez basin by Thiessen polygons.

Rain gauges	North-eastern zone	North-western zone	South-eastern zone	South-western zone	Whole Lez system area
Prades-le-Lez	74 %	13 %	100 %	39 %	61 %
Sommières	12 %	–	–	–	5 %
Vic-le-Fesq	14 %	3 %	–	–	6 %
Saint-Martin-de-Londres	–	20 %	–	61 %	15 %
Saint-Hippolyte-du-Fort	–	64 %	–	–	13 %

**Table 3.** Optimisation of the rainfall temporal window widths.

	North-eastern zone	North-western zone	South-eastern zone	South-western zone	Previous discharge	$N_c$
Temporal window width range ( $h$ )	3–9	2–8	2–8	3–9	1–5	1–7
Chosen temporal window width ( $h$ )	7	7	4	7	1	5



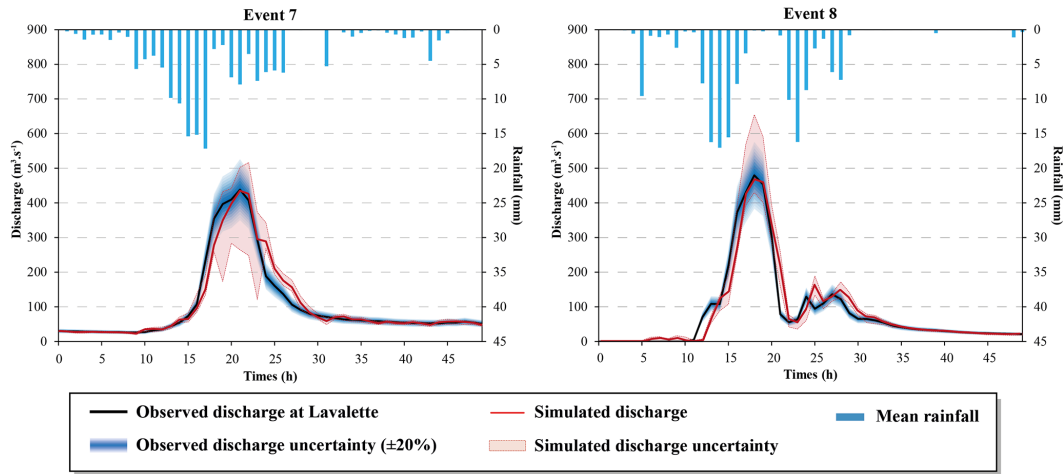
**Figure 3.** Postulated model: grey block diagram. Three layer multilayer perceptron with linear hidden layer between rainfall inputs and non-linear layer. Parameters used in Eq. (4) are denoted in red.

and 8, model selection was done without these events (blind assessment).

**4.2.2 Model validation**

The database presented in Table 4 shows seven flash-flood events. Because of the small number of events and their heterogeneity it seemed necessary to estimate modelling quality on all events. We thus decided to train seven models, testing

each on one event (training performed on the six following events). The model tested on event  $n$  is noted as  $T_n$ . This is a cross-test operation. Table 4 shows the performance of the seven models in terms of  $R^2$ , synchronous percentage of peak discharge ( $S_{PPD}$ ), and peak delay ( $P_d$ ). After training, we compared the quality of the models: aside from model  $T_2$ ,  $R^2$  and  $S_{PPD}$  scores of model  $T_{13}$  are the worst, respectively 0.71 and 138 %. The other models show satisfactory  $R^2$  and  $S_{PPD}$  scores:  $R^2$  from 0.79 to 0.96 and  $S_{PPD}$  from 87 to 99 %.



**Figure 4.** Hydrographs of major events in the database: events 7 and 8. Simulated discharge is the median of outputs coming from the 50 run models (differing by their initialisation parameters). Uncertainty on the observed value is the measurement 20 %. Uncertainty on the simulated value is represented by simulations coming from the 50 run models (differing by their parameters initialisation).

**Table 4.** Performances of models T<sub>2</sub>, T<sub>4</sub>, T<sub>6</sub>, T<sub>7</sub>, T<sub>8</sub>, T<sub>13</sub> and T<sub>14</sub>: Nash criterion ( $R^2$ ), the synchronous percentage of the peak discharge ( $S_{PPD}$ ) and the peak delay ( $P_d$ ). T<sub>7</sub> and T<sub>8</sub> are models tested on the two most intense events, they are highlighted in bold.

Models	$R^2$	$S_{PPD}$ (%)	$P_d$ (h)
T <sub>2</sub>	-0.75	22	-5
T <sub>4</sub>	0.96	87	-1
T <sub>6</sub>	0.84	122–89	0–0
<b>T<sub>7</sub></b>	<b>0.96</b>	<b>99</b>	<b>0</b>
<b>T<sub>8</sub></b>	<b>0.93</b>	<b>97</b>	<b>0</b>
T <sub>13</sub>	0.71	138	0
T <sub>14</sub>	0.79	94	1

Regarding the  $P_d$ , only model T<sub>2</sub> performed badly. The models T<sub>4</sub>, T<sub>7</sub>, T<sub>8</sub>, and T<sub>14</sub> are efficient regarding the three performance criteria. Model T<sub>13</sub> overestimates the flood peak; note that event 13 is the sole event that occurred on dry soils, except event 8 when extremely intense rainfall was observed.

Looking at hydrographs presented in Fig. 4 for the two most intense events and taking into account the scores presented in Table 4, one can suggest that the models are efficient enough to be used for knowledge extraction. In addition, as it will be shown in Sect. 4.3.1, knowledge extraction is independent of outliers as it takes into account all events of the training database.

### 4.3 Contributions and time transfers of spatial rainfall to discharge at the Lavalette station

The KnoX method was used to estimate the contributions of the four previously defined zones to flash flooding at the Lavalette station.

### 4.3.1 Extraction of information from parameters

After training, the median of absolute values of the parameters for 50 different initialisations is calculated. It is noted as  $^M |C_{ij}|$  for the parameter  $C_{ij}$  linking the neuron (or input)  $j$  to the neuron  $i$ . The rainfall contribution of zone  $z$  to output at time step  $k - d$  ( $k$  is the discrete time and  $d$  a delay) is denoted as  $r_z(k - d)$ . It is calculated according to the chain of parameters linking one input:  $r_z(k - d)$ , to the output  $y(k)$ . As it is shown in Fig. 3, we have three layers of parameters between the input  $r_z(k - d)$  and the output  $y(k)$ ; therefore, there are three terms in the numerator; denominator corresponds to normalisation terms in order to estimate the specific contribution of the input  $r_z(k - d)$  relative to the sum of all other parameters of the same layer. There is also three normalisation terms because there are three layers of parameters. The following notations are reported in red in Fig. 3. The contribution is calculated as

$$P(r_z(k - d)) = \frac{^M |C_{H_z r_d}|}{\sum_{d=0}^{w_z} \sum_{H_N=1}^M |C_{H_z r_d}|} \sum_{H_N=1}^{N_c} \left[ \frac{^M |C_{H_N H_z}|}{\sum_{H_z=1}^M |C_{H_N H_z}| + \sum_{d=1}^{w_1-1} ({}^M |C_{H_N q_d}|)} \frac{^M |C_{o H_N}|}{\sum_{H_N=1}^M ({}^M |C_{o H_N}|)} \right], \quad (5)$$

where  $H_z$  ( $H_z = 1, 4$ ) is the subscript of the first hidden layer of linear neurons,  $H_N$  ( $H_N = 1, N_c$ ) is the subscript of the second hidden layer (of  $N_c$  non-linear neurons);  $q_d$  is the subscript of the previously measured discharge inputs  $y_q$ , and  $o$  is the subscript of the output layer.

The contribution of an entire zone can be expressed as the sum of the contributions of the considered zone at different time steps:

**Table 5.** Contributions (in bold) of different zones to discharge. Flash-flood contribution is the median of contributions of rainfall inputs to the output of the seven models T<sub>2</sub>, T<sub>4</sub>, T<sub>6</sub>, T<sub>7</sub>, T<sub>8</sub>, T<sub>13</sub> and T<sub>14</sub>. Maximum and minimum values come from the set of 7 models in this study and from 10 experiments of 50 initialisations in Kong-A-Siou et al. (2013).

	North-western zone	North-eastern zone	South-western zone	South-eastern zone
Part of the surface watershed at Lavalette	10 %	45 %	20 %	25 %
Rainfalls contribution to flash flooding at Lavalette (min–max)	<b>9 %</b> (8–11 %)	<b>26 %</b> (18–30 %)	<b>47 %</b> (43–54 %)	<b>18 %</b> (12–24 %)
Time delay of principal contributions	–	–2 h; –5 h	–1 h; –4 to –5 h	0 h
Part of the underground basin at Lez spring from Kong-A-Siou et al. (2013)	22 %	36 %	18 %	24 %
Rainfalls contribution to daily discharge at Lez spring from Kong-A-Siou et al. (2013) (min–max)	<b>29 %</b> (28–31 %)	<b>52 %</b> (50–54 %)	<b>13 %</b> (10–15 %)	<b>6 %</b> (4–7 %)
Time delay of principal contributions	–1 to –3 days	–1 day	–1 day	0 day

$$P_z = \sum_{d=0}^{w_z} P(r_z(k-d)). \quad (6)$$

This contribution calculus is done for each exogenous input: rainfall or measured discharge, and for each designed model (T<sub>*n*</sub>, *n* = 1, 7). The contributions of the previous measured discharges used as input to the model ranges from 21 to 30 % (79–70 % for total rainfall) depending on the considered model T<sub>*n*</sub> (*n* = 1, 7). Nevertheless, only rainfall contribution values are considered (for a total of 100 %) because the measured input of discharge plays the role of state variable (Artigue et al., 2012). Rainfall contribution medians for the seven models are provided in Table 5. Values obtained by Kong-A-Siou et al. (2013) are also reported; they show the difference between contributions of the same zones to very different processes (flash flood at Lavalette station for this study, and daily aquifer discharge at the Lez spring in the 2013 study).

#### 4.4 Time distribution of contributions

Figure 5 shows the time distributions of contributions by the north-western, north-eastern, south-western, and south-eastern rainfall inputs. The percentages expressed in this section are the contribution of the inputs to the output.

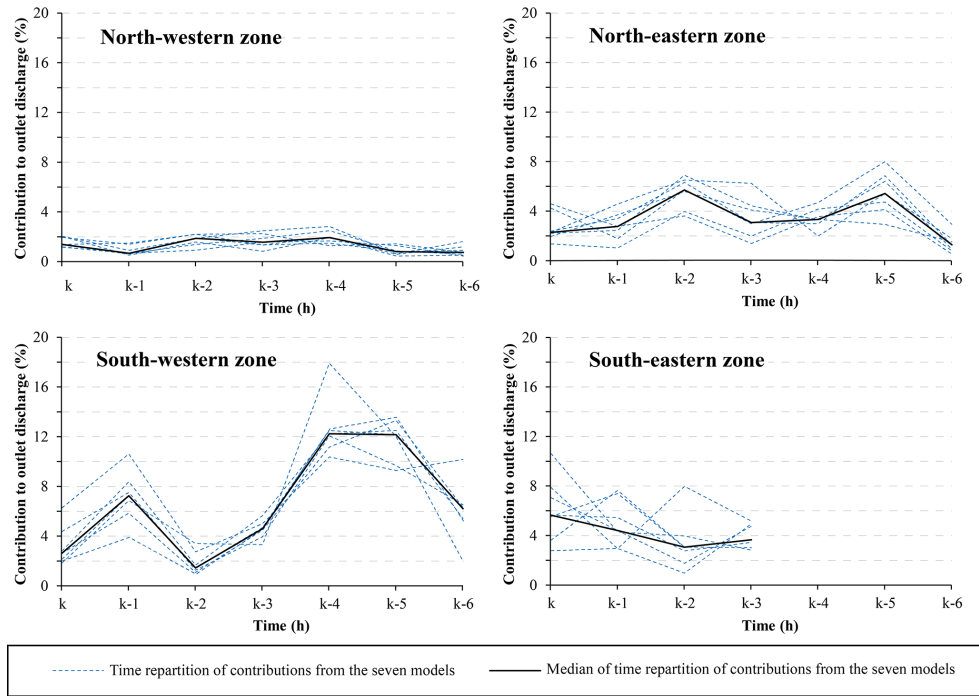
Figure 5 shows that the major contribution comes from the south-western zone, with two peaks at *k*-1 and *k*-4 to *k*-5. This means that, on average, for all events and all time steps, water comes principally from the south-western zone via two transfer functions: one associated with rapid surface response (*k*-1) and the other associated with slower karst response (*k*-4 to *k*-5) (Causse de Viols-le-Fort, cf. Figs. 1, 2). The same reasoning can be applied to the north-eastern zone: fast surface response at *k*-2 and slower karst water at *k*-5 (due to numerous faults in this zone, cf. Fig. 2); nevertheless, contributions from the north-eastern zone are less pronounced than the south-western ones.

## 5 Discussion

### 5.1 Rainfalls contributions to discharge

The map shown in Fig. 2 and Table 5 can guide the discussion: Fig. 2 presents the transcription of geological properties in infiltration capabilities.

- Regarding the south-western zone (43–54 %), it appears that the large extent of karst delayed contribution (24 % for *k*-4 to *k*-5) comes from the Causse de Viols-le-Fort. This property is not observed in daily continuous modelling (Table 5) because the Lirou spring (outlet of the Causse de Viols-le-Fort, cf. Fig. 1) is an intermittent spring that flows only in wet conditions; moreover, this part of the aquifer is pumped for drinking water during the dry season.
- Regarding the north-eastern zone, the second largest contributor to flash flooding at Lavalette (18–30 %), a careless analysis could lead to the conclusion that it may be the major contributor because it has a large impervious basin within the surface watershed of the Lez at Lavalette. However, significant losses occur through numerous faults in the southern part of this zone (cf. Fig. 2). As in the south-western zone, two contributions play a role: surface (rapid) and underground (slow) (recall that the contribution reflects the behaviour of the entire training database; thus, this schematic behaviour can be assumed). Nevertheless the Lez spring, which drains the underground north-eastern zone, has a smaller discharge than Lirou spring, during flood events, and thus softens the underground flooding. The daily discharge of the north-eastern zone to Lez spring (50–54 %) can be explained only by infiltration through numerous faults, not only limited to the surface watershed but also in the extreme northern part of the under-



**Figure 5.** Median and total spread of time distributions of north-western, north-eastern, south-western and south-eastern rainfall inputs contributions calculated from parameters of the seven designed models.

ground basin. Indeed, a dye tracing experiment demonstrated water circulation between sinkholes in river tributaries of the Vidourle (east of Lez basin, cf. Fig. 2) (Bérard, 1983).

- In the north-western zone, both behaviours (flash flooding at Lavalette or daily run-off at the Lez spring) differ greatly. For flash floods at Lavalette, the north-western zone has a weak influence, which is consistent with the representation of the basin in Fig. 2 (perched aquifer delaying water transfers and limited infiltration along the Corconne fault due to the limited infiltration capability of the fault); for daily run-off at the Lez spring, conversely, delayed transfer and permanent infiltration along faults increases the storage and thus contributes more to daily run-off (28–31 %).
- Lastly, the south-eastern zone has a lesser effect on flash flooding due to its small area in the watershed at Lavalette (12–24 %). One can observe a relatively large variability on Fig. 5. This may be a limit of the work due to (i) the high sensitivity of this small fully impervious area to localised heavy rainfall, combined with the bad representation of the rainfall variability in this zone (Sect. 3.6.1), or (ii) the heterogeneity of events that influences the training. For daily run-off at the Lez spring, this zone can be excluded from the recharge basin (4–7 %); this is consistent with the Fig. 2 information, as

the zone is composed of impervious formations downstream of the spring.

## 5.2 Time behaviour

Temporal contributions within each zone are shown in Fig. 5. As analysed previously, these contributions are consistent with dual behaviours: fast surface water and slower karst water. The sensitivity of these estimations with respect to the different models (seven models) shown by dotted points does not contradict the proposed analysis.

## 5.3 Flash-flood simulations

Schematically, Fig. 5 shows that response times of 2 h (probably surface water) and 5–6 h (probably karst water) are not very different. Consequently, it is possible for karst water to add to surface flooding in the event of multi-peak rainfalls. This behaviour was underlined by Bailly-Comte et al. (2012), Coustau et al. (2012), and Fleury et al. (2013) who focussed on the importance of the initial water level inside the karst. Consequently, flash-flood simulations would require real-time piezometric information in both the north-eastern and south-western zones to estimate the influence of karst water in these two zones.

## 5.4 Limits of the study

The KnoX method is a novel tool for investigating the behaviour of heterogeneous basins. Because this method is currently under discovery and development, the sensitivity of the provided estimations to noise, uncertainty, and small database size have not yet been fully assessed. Nevertheless the overview of the Lez aquifer that this method has provided appears to be quite consistent with the current knowledge. Based on the proposed behaviour of the Lez aquifer, several fieldwork projects are currently in progress to assess karst and non-karst contributions at the Lavalette station.

## 6 Conclusion

Mediterranean flash floods and mountain floods are responsible for numerous casualties and major property damage. These floods occur in heterogeneous basins, which are difficult to observe and thus to model. For this reason this paper investigates the ability to obtain information on a complex aquifer through global systemic modelling using neural networks. For this purpose we chose as a case study flash flooding at the entrance to the great city of Montpellier (southern France) where large potential losses are at stake. After recent trends in flash flooding and karst modelling, this paper focuses on hydrological modelling with neural networks and presents the basics of neural network modelling. It was shown that these statistical models can efficiently model unknown relationships using only databases. Moreover, efficient new approaches were demonstrated to extract information from a set of parameters. Among these methods, the KnoX method can identify contributions from various geographic zones to discharge at the basin outlet; it also provides better characterisation of processes linked to karst water and surface water. To investigate this capability, a case study was conducted on a complex hydrosystem, the Lez hydrosystem. The application to this system shows that the KnoX method consistently estimated the water contributions from four “homogenous” geological zones of the hydrosystem to the discharge at its outlet. The main contributor to flash flooding at Lavalette was identified as the Causse de Viols-le-Fort karst plateau. Piezometric information within this plateau would thus be of crucial importance to model flooding at the Lavalette station. On a more interesting note, several time responses were identified and associated with surface circulations or underground contributions. The lag between these two different response times, estimated at 3 h, may thus correspond to a synchronisation difference between surface and underground flooding. This information may help flood warning services anticipate the size of a flood in case of a rain event composed of two rain peaks separated by 3 h.

This is a generic method that can be applied to any heterogeneous basin as long as a sufficient database is available.

*Author contributions.* T. Darras, L. Kong-A-Siou and A. Johannet designed the experiments and T. Darras conducted them. V. Borrell Estupina, B. Vayssade and S. Pistre provided hydrological and meteorological data and their expertise. T. Darras prepared the manuscript with contributions from all co-authors. A. Johannet contributed to the RNF Pro software used to simulate neural networks and extract parameters.

*Acknowledgements.* The authors thank the METEO-France weather agency, the SPGD flood forecasting agency for providing rainfall data sets, as well as the Montpellier Office of DIREN for contributing discharge data. Our gratitude is extended to Caroline Wittwer, Bruno Janet, and Arthur Marchandise for the stimulating collaboration shared with the SCHAPI unit, and also to Roger Moussa, Pierre Roussel-Ragot, Pierre Ribstein, and Marc Vinches for the helpful discussions as well as MEDYCYSS observatory for support. The constant effort made by Dominique Bertin and the Geonosis Company to enhance and develop the neural network software RNF Pro are thereby acknowledged as well. Lastly, special thanks go to the French National Flood Warning and Forecasting Service (SCHAPI), which funded this work.

Edited by: T. Kjeldsen

## References

- Abrahart, R. J. and See, L. M.: Neural network modelling of non-linear hydrological relationships, *Hydrol. Earth Syst. Sci.*, 11, 1563–1579, doi:10.5194/hess-11-1563-2007, 2007.
- Anctil, F., Lauzon, N., and Filion, M.: Added gains of soil moisture content observations for streamflow predictions using neural networks, *J. Hydrol.*, 359, 225–234, doi:10.1016/j.jhydrol.2008.07.003, 2008.
- Artigue, G., Johannet, A., Borrell, V., and Pistre, S.: Flash flood forecasting in poorly gauged basins using neural networks: case study of the Gardon de Mialet basin (southern France), *Nat. Hazards Earth Syst. Sci.*, 12, 3307–3324, doi:10.5194/nhess-12-3307-2012, 2012.
- Bailly-Comte, V., Borrell-Estupina, V., Jourde, H., and Pistre, S.: A conceptual semidistributed model of the Coulazou River as a tool for assessing surface water-karst groundwater interactions during flood in Mediterranean ephemeral rivers, *Water Resour. Res.*, 48, W09534, doi:10.1029/2010WR010072, 2012.
- Bakalowicz, M.: Karst groundwater: a challenge for new resources, *Hydrogeol. J.*, 13, 148–160, doi:10.1007/s10040-004-0402-9, 2005.
- Barron, A. R.: Universal approximation bounds for superpositions of a sigmoidal function, *IEEE Trans. Inform. Theory*, 39, 930–945, 1993.
- Bérard, P.: Alimentation en eau de la ville de Montpellier. Captage de la source du Lez étude des relations entre la source et son réservoir aquifère, Rapport no. 2, Détermination des Unités Hydrogéologiques, BRGM, Montpellier, 1983.
- Borga, M., Boscolo, P., Zanon, F., and Sangati, M.: Hydrometeorological analysis of the 29 August 2003 flash flood in the Eastern Italian Alps, *J. Hydrometeorol.*, 8, 1049–1067, doi:10.1175/JHM593.1, 2007.

- Borga, M., Anagnostou, E. N., Blöschl, G., and Creutin, J.-D.: Flash flood forecasting, warning and risk management: the HYDRATE project, *Environ. Sci. Policy*, 14, 834–844, doi:10.1016/j.envsci.2011.05.017, 2011.
- Bowden, G. J., Dandy, G. C., and Maier, H. R.: Input determination for neural network models in water resources applications, Part 1 – background and methodology, *J. Hydrol.*, 301, 75–92, doi:10.1016/j.jhydrol.2004.06.021, 2005.
- Corradini, C. and Singh, V. P.: Effect of spatial variability of effective rainfall on direct runoff by a geomorphologic approach, *J. Hydrol.*, 81, 27–43, 1985.
- Corzo, G. and Solomatine, D.: Knowledge-based modularization and global optimization of artificial neural network models in hydrological forecasting, *Neural Netw.*, 20, 528–536, doi:10.1016/j.neunet.2007.04.019, 2007.
- Cosandey, C. and Robinson, M.: *Hydrologie continentale*, Armand Colin, Paris, 368 pp., 2000.
- Coustau, M., Bouvier, C., Borrell-Estupina, V., and Jourde, H.: Flood modelling with a distributed event-based parsimonious rainfall-runoff model: case of the karstic Lez river catchment, *Nat. Hazards Earth Syst. Sci.*, 12, 1119–1133, doi:10.5194/nhess-12-1119-2012, 2012.
- Darras, T., Johannet, A., Vayssade, B., and Ayrat, P.-A.: Estimation de l'humidité du bassin pour la prévision des crues éclair par apprentissage statistique, in: *Eau, Déchets, Développement Durable*, edited by: Bourgeois, J., Choura, M., Lopez-Fereber, M., and Yelkouni, M., Actes du colloque E3D 2014, 2014a.
- Darras, T., Johannet, A., Vayssade, B., Kong A. Siou, L., and Pistre, S.: Influence of the Initialization of Multilayer Perceptron for Flash Floods Forecasting: How Designing a Robust Model, *International work-conference on Time Series (ITISE)*, 25–27 June 2014, Granada, Spain, 2014b.
- Dörfliger, N., Jourde, H., Ladouche, B., Fleury, P., Lachassagne, P., Conroux, Y., Pistre, S., and Vestier, A.: Active water management resources of karstic water catchment: the example of Le Lez spring Montpellier, South France), Montpellier, available at: [http://www.iwra.org/congress/2008/resource/authors/abs611\\_article.pdf](http://www.iwra.org/congress/2008/resource/authors/abs611_article.pdf), last access: 8 December 2014, 2008.
- Dreyfus, G.: *Neural Networks: Methodology and Applications*, Softcover reprint of hardcover, 1st edn., Springer, Berlin, New York, 2005.
- Fernando, T. M. K. G., Maier, H. R., and Dandy, G. C.: Selection of input variables for data driven models: an average shifted histogram partial mutual information estimator approach, *J. Hydrol.*, 367, 165–176, doi:10.1016/j.jhydrol.2008.10.019, 2009.
- Fleury, P., Borrell Estupina, V., Kong-A-Siou, L., Johannet, A., Darras, T., Pistre, S., Guilhemenc, M., Maréchal, J.-C. and Dörfliger, N.: Flood part I: Karst contribution to Lez floods, *Karstologia*, 62, 41–48, 2013.
- Gaume, E. and Bouvier, C.: Analyse hydro-pluviométrique des crues du Gard et du Vidourle des 8 et 9 septembre 2002, *Houille Blanche*, 6, 99–106, 2004.
- Gaume, E., Bain, V., Bernardara, P., Newinger, O., Barbuc, M., Bateman, A., Blaškovičová, L., Blöschl, G., Borga, M., Dumitrescu, A., Daliakopoulos, I., Garcia, J., Irimescu, A., Kohnova, S., Koutroulis, A., Marchi, L., Matreata, S., Medina, V., Preciso, E., Sempere-Torres, D., Stancalie, G., Szolgay, J., Tsanis, I., Velasco, D., and Viglione, A.: A compilation of data on European flash floods, *J. Hydrol.*, 367, 70–78, doi:10.1016/j.jhydrol.2008.12.028, 2009.
- Geman, S., Bienenstock, E., and Doursat, R.: Neural networks and the bias/variance dilemma, *Neural Comput.*, 4, 1–58, doi:10.1162/neco.1992.4.1.1, 1992.
- Hagan, M. T. and Menhaj, M. B.: Training feedforward networks with the Marquardt algorithm, *IEEE Trans. Neural Netw.*, 5, 989–993, doi:10.1109/72.329697, 1994.
- Hornik, K., Stinchcombe, M., and White, H.: Multilayer feedforward networks are universal approximators, *Neural Netw.*, 2, 359–366, doi:10.1016/0893-6080(89)90020-8, 1989.
- Hsu, K., Gupta, H. V., and Sorooshian, S.: Artificial neural network modeling of the rainfall-runoff process, *Water Resour. Res.*, 31, 2517–2530, doi:10.1029/95WR01955, 1995.
- Hsü, K. J., Ryan, W. B. F., and Cita, M. B.: Late miocene desiccation of the mediterranean, *Nature*, 242, 240–244, doi:10.1038/242240a0, 1973.
- Jain, A. and Kumar, S.: Dissection of trained neural network hydrologic models for knowledge extraction, *Water Resour. Res.*, 45, W07420, doi:10.1029/2008WR007194, 2009.
- Johannet, A., Vayssade, B., and Bertin, D.: Neural networks: from black box towards transparent box application to evapotranspiration modeling, *Int. J. Comput. Intell.*, 4, 163–170, 2008.
- Katul, G. G., Porporato, A., Daly, E., Oishi, A. C., Kim, H.-S., Stoy, P. C., Juang, J.-Y., and Siqueira, M. B.: On the spectrum of soil moisture from hourly to interannual scales: spectrum of soil moisture content, *Water Resour. Res.*, 43, W05428, doi:10.1029/2006WR005356, 2007.
- Kingston, G. B., Maier, H. R., and Lambert, M. F.: A probabilistic method for assisting knowledge extraction from artificial neural networks used for hydrological prediction, *Math. Comput. Model.*, 44, 499–512, doi:10.1016/j.mcm.2006.01.008, 2006.
- Kitanidis, P. K. and Bras, R. L.: Real-time forecasting with a conceptual hydrologic model: 2. Applications and results, *Water Resour. Res.*, 16, 1034–1044, doi:10.1029/WR016i006p01034, 1980.
- Kong-A-Siou, L., Johannet, A., Borrell, V., and Pistre, S.: Complexity selection of a neural network model for karst flood forecasting: the case of the Lez Basin (southern France), *J. Hydrol.*, 403, 367–380, doi:10.1016/j.jhydrol.2011.04.015, 2011.
- Kong-A-Siou, L., Johannet, A., Valérie, B. E., and Pistre, S.: Optimization of the generalization capability for rainfall-runoff modeling by neural networks: the case of the Lez aquifer (southern France), *Environ. Earth Sci.*, 65, 2365–2375, doi:10.1007/s12665-011-1450-9, 2012.
- Kong-A-Siou, L., Cros, K., Johannet, A., Borrell-Estupina, V., and Pistre, S.: KnoX method, or Knowledge eXtraction from neural network model, case study on the Lez karst aquifer (southern France), *J. Hydrol.*, 507, 19–32, doi:10.1016/j.jhydrol.2013.10.011, 2013.
- Kong-A-Siou, L., Fleury, P., Johannet, A., Borrell Estupina, V., Pistre, S., and Dörfliger, N.: Performance and complementarity of two systemic models (reservoir and neural networks) used to simulate spring discharge and piezometry for a karst aquifer, *J. Hydrol.*, 519, 3178–3192, doi:10.1016/j.jhydrol.2014.10.041, 2014.
- Krajewski, W. F., Lakshmi, V., Georgakakos, K. P., and Jain, S. C.: A Monte Carlo Study of rainfall sampling effect on a dis-

- tributed catchment model, *Water Resour. Res.*, 27, 119–128, doi:10.1029/90WR01977, 1991.
- Kurtulus, B. and Razack, M.: Evaluation of the ability of an artificial neural network model to simulate the input-output responses of a large karstic aquifer: the La Rochefoucauld aquifer (Charente, France), *Hydrogeol. J.*, 15, 241–254, doi:10.1007/s10040-006-0077-5, 2007.
- Lauzon, N., Anctil, F., and Petrinovic, J.: Characterization of soil moisture conditions at temporal scales from a few days to annual, *Hydrol. Process.*, 18, 3235–3254, doi:10.1002/hyp.5656, 2004.
- Le Lay, M. and Saulnier, G.-M.: Exploring the signature of climate and landscape spatial variabilities in flash flood events: case of the 8–9 September 2002 Cévennes-Vivarais catastrophic event, *Geophys. Res. Lett.*, 34, L13401, doi:10.1029/2007GL029746/full, 2007.
- Llasat, M. C., Llasat-Botija, M., Prat, M. A., Porcú, F., Price, C., Mugnai, A., Lagouvardos, K., Kotroni, V., Katsanos, D., Michaelides, S., Yair, Y., Savvidou, K., and Nicolaidis, K.: High-impact floods and flash floods in Mediterranean countries: the FLASH preliminary database, *Adv. Geosci.*, 23, 47–55, doi:10.5194/adgeo-23-47-2010, 2010.
- Maier, H. R. and Dandy, G. C.: Neural networks for the prediction and forecasting of water resources variables: a review of modelling issues and applications, *Environ. Model. Softw.*, 15, 101–124, doi:10.1016/S1364-8152(99)00007-9, 2000.
- Marchandise, A.: Modélisation hydrologique distribuée sur le Gardon d'Anduze; étude comparative de différents modèles pluie-débit, extrapolation de la normale à l'extrême et tests d'hypothèses sur les processus hydrologiques, Université Montpellier II, Montpellier, available at: [http://www.ohmconv.fr/Documents/theses/these\\_marchandise-old.pdf](http://www.ohmconv.fr/Documents/theses/these_marchandise-old.pdf), last access: 8 December 2014, 2007.
- Marchi, L., Borga, M., Preciso, E., and Gaume, E.: Characterisation of selected extreme flash floods in Europe and implications for flood risk management, *J. Hydrol.*, 394, 118–133, doi:10.1016/j.jhydrol.2010.07.017, 2010.
- Nash, J. and Sutcliffe, J. V.: River flow forecasting through conceptual models, part I – a discussion of principles, *J. Hydrol.*, 10, 282–290, 1970.
- Nerrand, O., Roussel-Ragot, P., Personnaz, L., Dreyfus, G., and Marcos, S.: Neural networks and nonlinear adaptive filtering: unifying concepts and new algorithms, *Neural Comput.*, 5, 165–199, 1993.
- Nikolopoulos, E. I., Anagnostou, E. N., Borga, M., Vivoni, E. R., and Papadopoulos, A.: Sensitivity of a mountain basin flash flood to initial wetness condition and rainfall variability, *J. Hydrol.*, 402, 165–178, doi:10.1016/j.jhydrol.2010.12.020, 2011.
- Norbiato, D., Borga, M., Degli Esposti, S., Gaume, E., and Anquetin, S.: Flash flood warning based on rainfall thresholds and soil moisture conditions: an assessment for gauged and ungauged basins, *J. Hydrol.*, 362, 274–290, doi:10.1016/j.jhydrol.2008.08.023, 2008.
- Olden, J. D. and Jackson, D. A.: Illuminating the “black box”: a randomization approach for understanding variable contributions in artificial neural networks, *Ecol. Model.*, 154, 135–150, 2002.
- Parajka, J., Naeimi, V., Blöschl, G., Wagner, W., Merz, R., and Scipal, K.: Assimilating scatterometer soil moisture data into conceptual hydrologic models at the regional scale, *Hydrol. Earth Syst. Sci.*, 10, 353–368, doi:10.5194/hess-10-353-2006, 2006.
- Pereira Filho, A. J. and dos Santos, C. C.: Modeling a densely urbanized watershed with an artificial neural network, weather radar and telemetric data, *J. Hydrol.*, 317, 31–48, doi:10.1016/j.jhydrol.2005.05.007, 2006.
- Price, C., Yair, Y., Mugnai, A., Lagouvardos, K., Llasat, M. C., Michaelides, S., Dayan, U., Dietrich, S., Galanti, E., Garrote, L., Harats, N., Katsanos, D., Kohn, M., Kotroni, V., Llasat-Botija, M., Lynn, B., Mediero, L., Morin, E., Nicolaidis, K., Rozalis, S., Savvidou, K., and Ziv, B.: The FLASH Project: using lightning data to better understand and predict flash floods, *Environ. Sci. Policy*, 14, 898–911, doi:10.1016/j.envsci.2011.03.004, 2011.
- Raynaud, F., Borrell-Estupina, V., Dezetter, A., Pistre, S., Mathieu-Subias, H., and Servat, E.: Modelling Flash Floods in a Karstic Watershed Using an Original Semi-distributed Radar-Gauge Merging Method, in: *Engineering Geology for Society and Territory – Volume 3*, edited by: Lollino, G., Arattano, M., Rinaldi, M., Giustolisi, O., Marechal, J.-C., and Grant, G. E., Springer International Publishing, online, 169–173, available at: [http://link.springer.com/chapter/10.1007/978-3-319-09054-2\\_34](http://link.springer.com/chapter/10.1007/978-3-319-09054-2_34), last access: 13 February 2015, 2015.
- Rivrain, J. C.: Les épisodes orageux à précipitations extrêmes sur les régions méditerranéennes de la France, *Météo France & l'Environnement M.d.*, 1997.
- Schoups, G., van de Giesen, N. C., and Savenije, H. H. G.: Model complexity control for hydrologic prediction, *Water Resour. Res.*, 44, W00B03, doi:10.1029/2008WR006836, 2008.
- Sjöberg, J., Zhang, Q., Ljung, L., Benveniste, A., Delyon, B., Glorennec, P.-Y., Hjalmarsson, H., and Juditsky, A.: Nonlinear black-box modeling in system identification: a unified overview, *Automatica*, 31, 1691–1724, doi:10.1016/0005-1098(95)00120-8, 1995.
- Stone, M.: Cross-validatory choice and assessment of statistical predictions, *J. R. Stat. Soc. Ser. B Methodol.*, 36, 111–147, doi:10.2307/2984809, 1974.
- Toth, E.: Classification of hydro-meteorological conditions and multiple artificial neural networks for streamflow forecasting, *Hydrol. Earth Syst. Sci.*, 13, 1555–1566, doi:10.5194/hess-13-1555-2009, 2009.
- Toukourou, M., Johannet, A., Dreyfus, G., and Ayral, P.-A.: Rainfall-runoff modeling of flash floods in the absence of rainfall forecasts: the case of “Cévenol flash floods”, *Appl. Intell.*, 35, 178–189, doi:10.1007/s10489-010-0210-y, 2011.
- Tramblay, Y., Bouvier, C., Martin, C., Didon-Lescot, J.-F., Todorovik, D., and Domergue, J.-M.: Assessment of initial soil moisture conditions for event-based rainfall-runoff modelling, *J. Hydrol.*, 387, 176–187, doi:10.1016/j.jhydrol.2010.04.006, 2010.
- Visserot, Y.: Intégration de l'information hydrométéorologique spatialisée pour la modélisation et la prévision des crues éclair à l'aide des réseaux de neurones, Rapport de stage de master 2, Alès, 2012.
- Wooldridge, S. A., Kalma, J. D., and Walker, J. P.: Importance of soil moisture measurements for inferring parameters in hydrologic models of low-yielding ephemeral catchments, *Environ. Model. Softw.*, 18, 35–48, doi:10.1016/S1364-8152(02)00038-5, 2003.