



HAL
open science

Cell-Death-Associated Molecular Patterns As Determinants of Cancer Immunogenicity

Sylvain Ladoire, Dalil Hannani, Marie Vétizou, Clara Locher, Laetitia Aymeric, Lionel Apetoh, Oliver Kepp, Guido Kroemer, François Ghiringhelli,
Laurence Zitvogel

► **To cite this version:**

Sylvain Ladoire, Dalil Hannani, Marie Vétizou, Clara Locher, Laetitia Aymeric, et al.. Cell-Death-Associated Molecular Patterns As Determinants of Cancer Immunogenicity. *Antioxidants and Redox Signaling*, 2014, 20 (7), pp.1098-1116. 10.1089/ars.2012.5133 . hal-02047417

HAL Id: hal-02047417

<https://hal.science/hal-02047417v1>

Submitted on 24 Feb 2019

HAL is a multi-disciplinary open access archive for the deposit and dissemination of scientific research documents, whether they are published or not. The documents may come from teaching and research institutions in France or abroad, or from public or private research centers.

L'archive ouverte pluridisciplinaire **HAL**, est destinée au dépôt et à la diffusion de documents scientifiques de niveau recherche, publiés ou non, émanant des établissements d'enseignement et de recherche français ou étrangers, des laboratoires publics ou privés.

FORUM REVIEW ARTICLE

Cell-Death-Associated Molecular Patterns As Determinants of Cancer Immunogenicity

Sylvain Ladoire,¹⁻³ Dalil Hannani,^{1,2,4} Marie Vetizou,^{1,2,4} Clara Locher,^{1,2,4} Laetitia Aymeric,^{1,2,4} Lionel Apetoh,^{3,5,6} Oliver Kepp,^{1,2,4} Guido Kroemer,^{1,2,7-9} François Ghiringhelli,^{3,5,6} and Laurence Zitvogel^{1,2,4,10}

Abstract

Significance: Accumulating evidence indicates that the success of some anticancer treatments (select chemotherapies or radiotherapy or *trastuzumab*) could be related to the stimulation of an anticancer immune response through the induction of an immunogenic tumor cell death (ICD). **Recent Advances:** Preclinical data revealed that dying tumor cells can emit a series of danger signals (so-called “cell-death-associated molecular patterns” (CDAMP)) that will dictate the recruitment and activation of specific inflammatory phagocytes. Hence, tumor cells succumbing to ICD are characterized by specific metabolic and molecular changes that will trigger a hierarchy of polarizing cytokine-producing cells, culminating in the recruitment and reactivation of antitumor interferon- γ -producing effector T cells which contribute to the success of cytotoxic treatments. **Critical Issues:** In this review, we summarize the molecular and cellular bases of this ICD, underscoring the crucial role of high mobility group box 1 protein (HMGB1) and adenosine tri-phosphate, both of which are released from dying tumor cells during ICD and are implicated in the chemotherapy-elicited anticancer immune response. **Future Directions:** We discuss here how such CDAMP could serve as predictive biomarkers that could discriminate immunogenic from nonimmunogenic anti-cancer compounds, and, in case of deficiency, could be compensated by surrogate products to ameliorate the success rate of conventional anticancer treatment modalities. *Antioxid. Redox Signal.* 00, 000–000.

Introduction: Immunogenic Cancer Cell Death in Cancer?

SINCE MOST HUMAN MALIGNANCIES result from chronic inflammatory processes, oncogenic transformation was not considered intrinsically immunogenic. However, recent lines of evidence indicate that this assumption needs to be revisited. First, the composition, function, and gene expression profile of the immune infiltrates in the tumor has a major impact on the fate of cancer patients (27, 41, 46, 107). Second, meta-analyses of multiple clinical studies indicate that

severe lymphopenia (<1000 cells/ μ l) negatively affects the chemotherapeutic response of multiple distinct solid cancers (122). Third, some oncogenic mutations may be capable of eliciting major histocompatibility complex (MHC) restricted T-cell immune responses (2, 3, 27, 62, 68). Finally, infiltration by CD8⁺ T cells also has a positive predictive value, for instance, in breast cancers (BC) treated by neoadjuvant chemotherapy (25).

For many decades, most anticancer therapies, especially radiotherapy and chemotherapy, were considered direct tumoricidal compounds, killing cancer cells or inducing a

¹Institut National de la Santé et de la Recherche Médicale, Villejuif, France.

²Institut de Cancérologie Gustave Roussy, Villejuif, France.

³Department of Medical Oncology, Centre Georges François Leclerc, Dijon, France.

⁴University of Paris Sud XI, Villejuif, France.

⁵Institut National de la Santé et de la Recherche Médicale, Dijon, France.

⁶Université de Bourgogne, Dijon, France.

⁷Sorbonne Paris Cité, University of Paris Descartes, Paris, France.

⁸Centre de recherche des Cordeliers, Paris, France.

⁹Pôle de Biologie, Hôpital Européen Georges Pompidou, Paris, France.

¹⁰Center of Clinical Investigations in Biotherapies of Cancer (CICBT), Villejuif, France.

permanent arrest in their cell cycle. Chemotherapies target without any distinction tumor cells and rapidly proliferating host's immune cells, leading to the assumption that cytotoxic chemotherapeutics would induce immunosuppressive rather than immunostimulatory off-target effects (167, 171). This belief has largely discouraged oncologists from performing extensive studies on the contribution of the immune system in anticancer therapies. Indeed, drug discovery programs have neglected the possibility that host immune responses may account for - at least part of - the efficacy of cytotoxic drugs. For example, the guidelines for drug screening and validation provided by the National Cancer Institute recommended the (xeno-) grafting of human cancer cell lines into immunodeficient hosts (168). Moreover, arguing against a dominant role of the immune system in the antitumor effects mediated by select chemotherapies, the fact that most treatment modalities induce "apoptosis," a cell demise is considered "immunologically silent," if not "tolerogenic" (67, 89, 131).

Despite these early observations, recent experimental evidence from several groups challenged this notion that necrosis would be immunogenic while apoptosis would not (50), indicating that the nature of cell death defined by distinct molecular, biochemical, and metabolic hallmarks would convey the mandatory links between dying cells, innate and cognate immunity. Hence, while many chemotherapeutic agents (*e.g.*, etoposide, mitomycin C, and cisplatin) trigger a cell death modality that is not immunogenic, distinct cytotoxic compounds such as doxorubicin, oxaliplatin, cyclophosphamide, or ionizing radiation could favor the activation of immune effectors cells while inducing apoptotic tumor cell death (17, 102). This means that (i) cancer cells dying after anthracyclines, oxaliplatin, or irradiation can mount an anti-cancer immune response in the absence of adjuvants and immunize the host against a subsequent tumor rechallenge (17, 102); (ii) that established tumors which regressed post-chemotherapy are massively invaded by cytotoxic T cells; and (iii) that chemotherapy-induced control of transplantable tumors depends on T lymphocytes. Indeed, we reported that these anti-cancer treatments were more efficient in immunocompetent than in immunocompromised animals (101, 102, 147).

We showed a hierarchy of cytokine-associated events that can be summarized as follows. First, the triggering of the autophagy machinery in chemotherapy-exposed tumor cells promotes adenosine tri-phosphate (ATP) release, which is indispensable for the recruitment of inflammatory monocytes-derived dendritic cells (in a P2Y2-dependent manner) (95). The ATP/P₂RX₇/Nlrp3/Caspase-1 axis in local dendritic cells (DCs) exposed to dying tumor cells promotes IL-1 β release by DCs and activation of γ 4/ γ 6 γ δ T cells that secrete IL-17 and IL-22 three days after chemotherapeutic treatment. Those γ δ T17 cells markedly correlate with the brisk recruitment and accumulation of interferon- γ (IFN γ)-producing CD8⁺ CTLs in tumor beds by day 8 postsystemic chemotherapy. Hence, using neutralizing antibodies and loss-of-function mice targeting IL-17/IL-17RA, IL-1 β /IL-1R1, and IFN γ /IFNRII, we showed that these three cytokines are crucial for the immunogenicity of cell death and anticancer efficacy mediated by chemotherapy.

These data generated in transplantable tumor models as well as in methylcholanthrene-induced sarcoma have been extended to humans. Anthracycline-killed tumor cells also

appear particularly immunogenic (45). After anthracycline-based chemotherapy, the intratumoral leukocyte infiltrate changes its composition in cancer patients. Accordingly, after exposure to neoadjuvant chemotherapy, one third of stage II/III BCs appear highly infiltrated by cytotoxic T cells with a concomitant reduction of B lymphocytes and Th2-CD4⁺ T cells (127). Moreover, the ratio of macrophages to CD8⁺ T cells in primary BCs not only predicts overall survival, but also predicts a pathologic response to chemotherapy in chemo-naïve patients (24). An increased abundance of T lymphocytes, as well as an ameliorated ratio of CD8⁺ T cells over Foxp3⁺ regulatory cells postchemotherapy, also predicted favorable therapeutic responses to combination therapy with anthracyclines/taxanes in human BC, and so does invasion by CD8⁺ T cells in colorectal cancer liver metastases (24, 52, 74, 161).

This review will summarize the mandatory cell-death-associated molecular patterns (CDAMP) for immunogenic cell death (ICD) to occur and will discuss the clinical implementations of this concept.

Early Signaling During ICD: Role of Calreticuline in Antigen Uptake

The uptake of dead cell-derived antigens by DCs constitutes an early step in the sequence of events that leads to anticancer immune responses. One of the first and cardinal molecular events during ICD is the rapid exposure of molecules on the outer leaflet of the plasma membrane that act as "eat-me" signals for antigen-presenting cells such as DCs (47). Interestingly, the analysis of surface proteome changes in anthracycline-treated tumor cells revealed that ICD is associated with the ectopic exposure of the endoplasmic reticulum (ER) chaperone calreticuline (CRT) (102, 109). In homeostatic conditions, CRT is mainly located in the lumen of the ER, in which it functions as a molecular chaperone and modulates calcium signaling and homeostasis (65). In response to anthracyclines or ionizing radiation, CRT exposure occurs before the first morphological signs of apoptosis and before the translocation of phosphatidylserine from the inner to the outer leaflet of the plasma membrane. Another prerequisite for surface CRT exposure is the activation of caspases; the Z-VAD fmk caspase inhibitor abolishing anthracycline-mediated CRT exposure to the cell surface (17). This process is accompanied by other hallmarks of the ER stress response such as phosphorylation of the eukaryotic initiation factor 2 α (Fig. 1) and co-trafficking with CRT of another ER-resident protein, the disulfide isomerase ERp57. ERp57 knockdown tumor cells fail to elicit immune responses and to respond to chemotherapy. This can be overcome by exogenous recombinant CRT protein in immunocompetent but not *nu/nu* mice, indicating that tumors with an intrinsic defect in the CRT-translocation machinery become unable to elicit an efficient anticancer immune response, contributing to tumor regression (109). The presence of CRT on the surface of tumor cells that succumb to distinct anticancer agents correlates with their uptake by DCs (102). Ecto-CRT appears to be indispensable for phagocytosis and ICD in that neutralizing CRT-specific antibodies or silencing of CRT by RNA interference abolished phagocyte engulfment of dying bodies and the immunogenicity of tumor cell death (102).

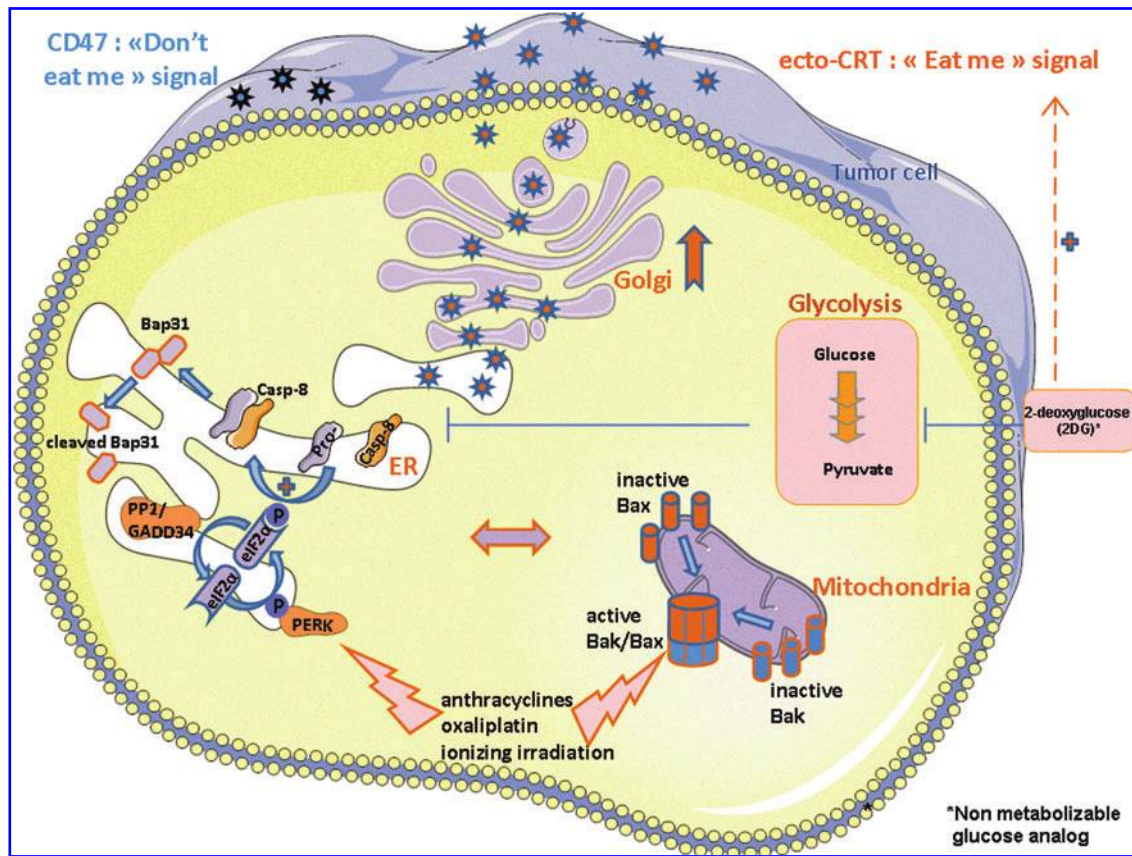


FIG. 1. Molecular mechanisms dictating early exposure of ecto-CRT. Immunogenic cell death (ICD) requires an “endoplasmic reticulum (ER) stress” for which the signaling axis phospho extracellular-signal-regulated kinase (PERK)-eukaryotic initiation factor 2 α (eIF2 α) is mandatory for anthracyclines and oxaliplatin-mediated calreticulin (CRT) exposure. The ICD also requires an intact apoptotic signal that involves caspase-8, the pro-apoptotic B cell lymphoma 2 family members BAX and BAK, and the ER protein BAP31. The inhibition of glycolysis could favor ecto-CRT exposure, rendering apoptosis inducers (but not intrinsically ER stressors) as immunogenic treatments. Strong ecto-CRT exposition overcomes the negative “don’t eat me signal,” CD47. (To see this illustration in color, the reader is referred to the web version of this article at www.liebertonline.com/ars.)

While we described an ER stress-response-dependent CRT exposure in the context of anthracyclines, cyclophosphamide, oxaliplatin, and irradiation, other reports confirmed the cardinal function of CRT in the recognition of dying cells and the elimination of nascent tumors.

CRT translocation as triggered by hypericin-based photodynamic therapy was independent of ERp57, increased cytosolic Ca²⁺ concentrations, eIF2 α phosphorylation, caspase-8 activation, and lipid rafts (48, 69). Conversely, hypericin-based photodynamic therapy promoted ICD *via* a molecular cascade that relies on reactive oxygen species (ROS) over-generation, PERK, BAX, and BAK, PI3K activity, and the ER-to-Golgi transport apparatus (48, 69).

Interestingly, Beneteau *et al.* just reported that inhibition of glycolysis converted etoposide-mediated non-ICD into an efficient vaccine procedure in mice. They demonstrated that this effect was at least partially mediated through ERp57/CRT exposure on the plasma membrane (12).

Chao *et al.* demonstrated that CRT is a dominant pro-phagocytic signal in several human cancers (such as leukemia, neuroblastoma, bladder cancers, and lymphoma) binding to CD91 on macrophages and counterbalancing the CD47/SIR-

P α -mediated anti-phagocytic signal. Interfering in the delicate balance between pro- and anti-phagocytic signals by selectively targeting tumor cells by anti-CD47 antibody effectively prevents immune evasion (18).

Hence, the ER stress response constitutes a central hub in the signaling cascades, leading to the emission of ICD-promoting signals. The accumulation of misfolded proteins, the inhibition of protein glycosylation, and the deregulation of redox and Ca²⁺ homeostasis can disrupt the delicate homeostasis of the ER-Golgi network, resulting in the activation of adaptive cell responses (120). More work is required to establish which transcription factors of the unfolded protein response are mandatory for the ICD and how the ER stress coopts the pattern recognition receptor (TLR4 in this case) signaling pathway to ignite innate immunity (84).

Late Signaling During ICD: HMGB1 and Cross-Presentation of Tumor Antigens

The CRT-driven uptake of tumor antigens by DCs is *per se* insufficient to elicit an antitumor immune response, as these tumor antigens should be also efficiently processed by DCs

and exposed at their surface within MHC complexes for the cross-priming of CD4⁺ and CD8⁺ T lymphocytes. This implies that, during ICD, other signaling pathways involved in antigen processing, presentation, and polarization are required after antigen uptake. We will now deal in detail with how high mobility group box 1 protein (HMGB1) and ATP can also determine the immunological fate of cell death.

HMGB1 in cancer

The HMGB1 is ubiquitously present in the nucleus of almost all mammalian cells, in which it stabilizes nucleosomes and regulates the transcription of many genes, promoting access to DNA to transcriptional factors (111, 143). Within the nucleus, it binds to the minor groove of DNA and enables interaction between nucleic acids and a variety of molecules, including p53, NF- κ B, and steroid hormone receptors. Besides its nuclear role, HMGB1 also functions as an extracellular cytokine-like molecule during various physiological or pathological processes, such as inflammation, cell differentiation,

cell migration, or tumor metastasis (31, 36, 77, 98). Indeed, HMGB1 is secreted by macrophages (13, 158), mature DCs (32), and natural killer (NK) cells (139) in response to injury, infection, or other inflammatory stimuli. When released outside the cell, HMGB1 can bind with a high affinity to several receptors, including the receptor for advanced glycation end products (RAGE), TLR-2, TLR-4, TLR-9, and, as a negative signaling molecule, CD24, mediating the response to infection and injury, thereby igniting inflammation (31, 77, 132, 148, 158). For a long time, HMGB1 has been thought to exert a proinflammatory function exclusively during necrosis (132), but recent evidence indicates that it also gets released by cells undergoing the late stages of apoptosis (11, 148). Indeed, many investigators have found that nuclear DNA is released in a time-dependent manner during apoptosis (21). Moreover, binding of HMGB1 to DNA is increased during apoptosis, in line with the fact that late-stage apoptotic cells can release both DNA and HMGB1. Thus, genotoxic agents that activate polyadenosylribosyl polymerase (PARP), including chemotherapeutic agents, can stimulate the release of HMGB1 from

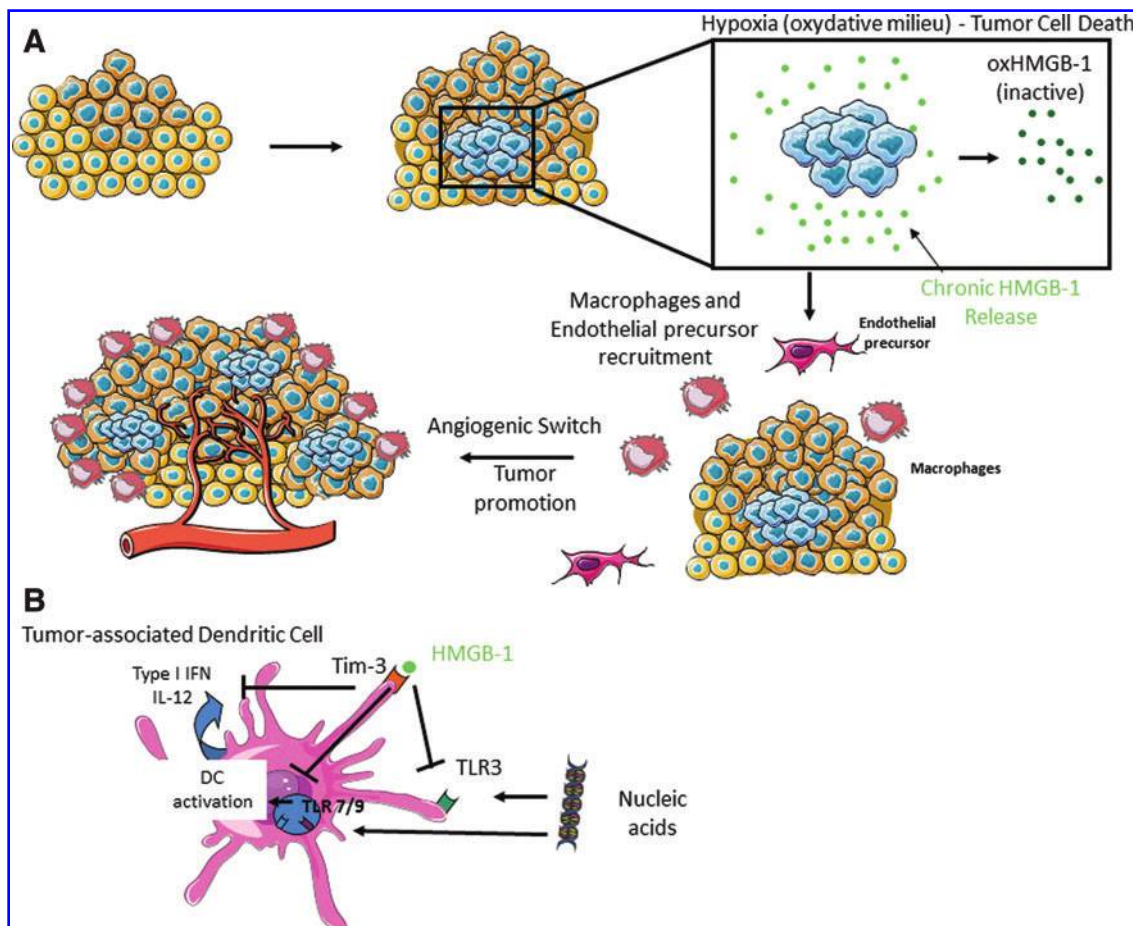


FIG. 2. Pro-tumor role of high mobility group box 1 protein (HMGB-1). (A) At the center of a growing tumor, hypoxia leads to tumor cell death and chronic release of HMGB-1. By recruiting macrophages and endothelial cell precursors, HMGB-1 activates neo-angiogenesis, thus promoting tumor growth and metastatic spreading. The oxidation of HMGB-1 by the hypoxia-induced oxidative milieu inactivates it, impairing this alarmin function. (B) HMGB-1 can bind Tim-3 that is expressed in tumor-associated dendritic cells (DCs). The ligation of HMGB-1 with Tim-3 inhibits acid nucleic-mediated DC activation (through TLR3, TLR7, and TLR9), and subsequent cytokine production (Type I IFN, IL-12), impairing the generation of anti-tumor responses. (To see this illustration in color, the reader is referred to the web version of this article at www.liebertonline.com/ars.)

its association with chromatin, presumably as a result of the direct PARP-mediated polyadenosylribosylation of HMGB1 (29). Outside the cell, HMGB1 could also favor the establishment of T-cell-dependent, protective immune responses (64, 70, 106), acting as "alarmin" or damaged-associated molecular pattern (DAMP) during cell death. Once passively released from necrotic cells in the extracellular space, HMGB1 acts as a chemoattractant for inflammatory leukocytes and stem cells (19, 108), and is able to trigger the functional maturation of DCs and to support the clonal expansion of IFN γ -producing Th1 cells (32, 97). It also influences the migration of DCs in secondary lymphoid organs (33, 81). Besides the roles of HMGB1 within the nucleus and in the extracellular environment, a third life as a cytosolic chaperon has been recently described, modulating the ability of cancer cells to die *via* apoptosis or to activate the autophagic machinery. For instance, it has been recently demonstrated that HMGB1/p53 complexes are able to regulate the cytoplasmic localization of the reciprocal protein, and subsequent levels of autophagy and apoptosis (76).

HMGB1 appears to have an alternate paradoxical role during tumorigenesis. Indeed, HMGB1 recognition can favor tumor progression through neoangiogenesis by attracting pro-angiogenic macrophages and endothelial cells in tumor beds (155) (Fig. 2A). Extracellular HMGB1 can trigger cell proliferation, migration, and sprouting of endothelial cells (96, 136). In addition, other studies have suggested a direct role of HMGB1 in tumor cell motility and invasion (39, 114, 115, 121). Altogether, HMGB1 was considered a factor of tumor progression that was associated with a dismal prognosis in cancer (100, 117). Accordingly, HMGB1-RAGE interactions mediated invasion, migration, and the growth of

implanted tumors in glioma models (165). In most of the studies, *HMGB1* and/or *RAGE* expression was studied at protein or mRNA levels. Overexpression (compared with healthy tissues) as well as cytoplasmic localization of HMGB1 have been reported in many cancer types, including gastrointestinal stromal tumors (22), colon (157), gastric (72), pancreatic (144), melanoma, prostate, and cervical carcinomas (53, 57, 59, 116, 117, 157). Moreover, in prostate cancer, *HMGB1* and *RAGE* expressions were increased in metastatic sites compared with primary tumors of nonmetastatic patients (71). Enhanced expression of *HMGB1* and *RAGE* is associated with aggressive tumor phenotype and poor prognosis at any stage in colon carcinoma (130). One possible scenario is that neoplastic cells expressing higher amounts of HMGB1 also release the pro-metastatic and pro-angiogenic cytokine in the tumor microenvironment (8, 36). A recent and elegant study demonstrated that HMGB1 can bind to TIM3 in tumor DCs, thereby suppressing the immunostimulatory pathway in DC mediated through nucleic acids released by dying tumor cells (20) (Fig. 2B).

Surprisingly, the relevance of *HMGB1* expression has been poorly investigated in BC. In one study, an increased expression of HMGB1 proteins in the tumor beds compared with healthy breast tissues was reported (42). Of note, nuclear HMGB1 markedly enhances DNA binding and transcriptional activity of the estrogen receptors in the estrogen responsive elements (23, 42, 92), suggesting its potential relevance in the biology of estrogen-sensitive BC. Northern blots analyses of the 1.4 kb and the 2.4 kb transcripts of *HMGB1* in 13 BC samples revealed strong variations that could potentially account for the response to endocrine therapy in estrogen receptor-positive BC (42). Since a few data

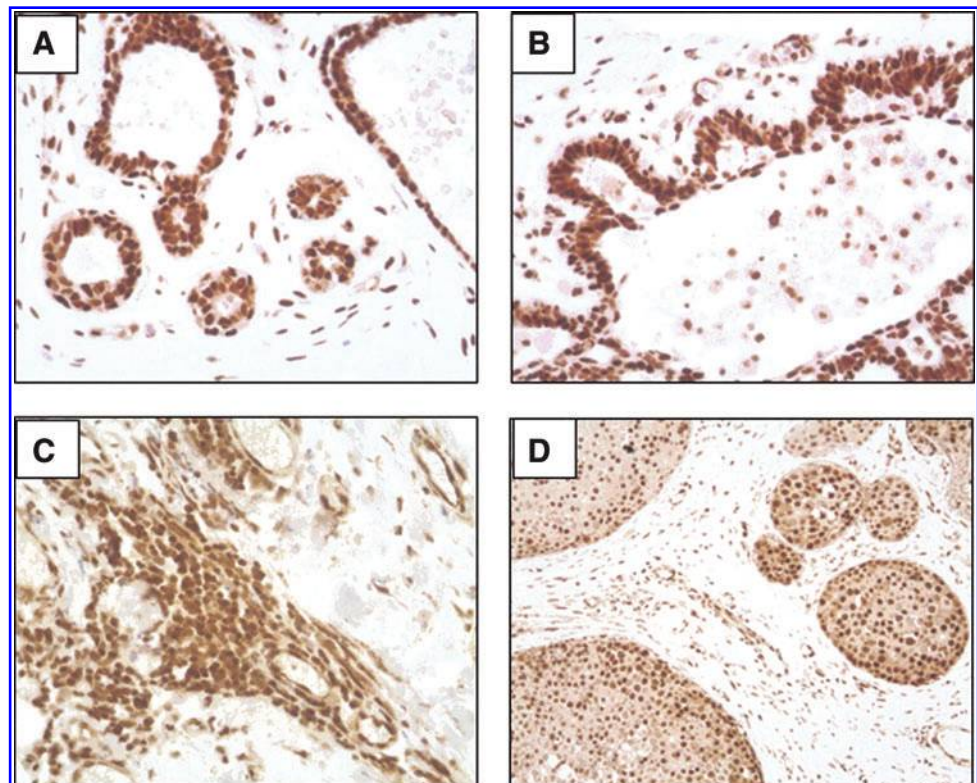


FIG. 3. Immunohistochemical HMGB1 staining of paraffin-embedded breast tissues. Representative results are shown for (A and B) normal mammary glands with strong nuclear staining, (C) stromal lymphocytic infiltrates with nuclear staining, and (D) carcinoma *in situ* with heterogeneous nuclear staining. Magnification $\times 20$. (To see this illustration in color, the reader is referred to the web version of this article at www.liebertonline.com/ars.)

were available on *HMGB1* expression in BC and normal breast tissues using immunohistochemistry (IHC), we carried out the IHC analysis of the pattern of HMGB1 expression in a series of BC patients from Institut Gustave Roussy, Villejuif, France, and Center George François Leclerc, Dijon, France. We observed that this pattern of expression is variable among tumors and peculiar in cancer versus healthy cells. In our hands, in the vast majority of cases, normal mammary glands and stromal cells harbor a strong nuclear staining (Fig. 3A–C). On the contrary, approximately one-third of breast tumors exhibit a similar nuclear staining (Fig. 4A). The vast majority of BC has lost this nuclear expression and only harbors a weak cytoplasmic or perinuclear staining (Fig. 4B), while *in situ* carcinoma presents with a mixed heterogeneous pattern of nuclear expression (Fig. 3D). We are currently addressing the prognosis value of HMGB1 nuclear expression in various molecular subtypes of BC and its relevance for the response to conventional therapies.

However, *HMGB1/RAGE* expression was not found to be elevated in all histological types, especially in lung carcinoma in which RAGE and HMGB1 levels are down-regulated compared with benign tumors and normal control tissues (9, 30, 55). Besides its putative role in the promotion of tumor progression, recent preclinical and clinical data revealed that HMGB1 seems to trigger protective anti-cancer T-cell responses. Pioneering studies have shown that this extracellular HMGB1 release could activate DCs (94, 125) and promote the induction of protective immune responses against poorly immunogenic apoptotic lymphoma cells (125). Therefore, when an appropriate antigenic transfer to DCs has occurred, the acute release of HMGB1 may contribute to elicit immune responses in cancer-bearing patients (4, 124, 126). Moreover, chemotherapeutic agents such as alkylating agents and taxanes appear to be more effective than others to trigger the translocation from the nucleus and the subsequent exodus of HMGB1 in the extracellular milieu (31, 43), suggesting that HMGB1 could behave as a DAMP or a CDAMP during ICD.

The multiple and controversial biological functions of HMGB1 are context dependent and could be explained by the redox modifications induced by the cell or the extracellular milieu. Redox-associated modulations of HMGB1 bioactivity oscillate between a chemokine-like molecule (fully reduced

HMGB1), a pro-inflammatory cytokine (in case of disulfide-bond possessing HMGB1), and inactivated DAMP (fully oxidized HMGB1). Activation of caspases during apoptosis can amplify mitochondrial ROS production, which may neutralize the DAMP activity of HMGB1 (Fig. 2). Of note, recent studies suggest that the redox modulation might finely control the DAMP activity of HMGB1, regulating leukocyte recruitment or their induction to produce inflammatory cytokines by adopting mutually exclusive redox states (154).

The second face of HMGB1 in cancer: role in processing and cross-presentation during ICD

The fact that some anticancer treatments appear to be more efficient in immunocompetent rather than in immunodeficient mice prompted the search for a link between innate and adaptive immune responses during ICD and led to the systematic screening for a role of toll-like receptors (TLRs) in the efficacy of chemotherapy or radiotherapy. Indeed, tumor cell death triggered by cytotoxic agents may lead to the release of danger signals that favor the development of anticancer immunity (90, 151). Although TLRs were originally described to detect microbial products (145), it has also been shown that endogenous danger signals from dying cells can bind TLRs and, thus, modulate adaptive immune responses (83). Indeed, when TLRs on the surface of DCs recognize pathogen-associated molecular patterns (PAMPs) or danger-associated molecular patterns (DAMPs), signaling pathways are ignited that eventually inhibit the fusion between phagosomes and lysosomes, thereby facilitating antigen processing and the initiation of cognate immunity (141).

To address whether TLRs could be involved in ICD, the immunogenicity of oxaliplatin-exposed tumor cells was tested in TLR-deficient mice. Only those *tlr4* deficient mice failed to mount a tumor-specific protective immunity. Next, we tested the efficacy of chemotherapy (anthracyclines or oxaliplatin) and radiotherapy in wild-type versus TLR4-deficient animals in 4 different tumor models (transplantable CT26, EG7, TS/A cell lines, and the graft of an osteosarcoma GOS). Although these cytotoxic compounds significantly reduced tumor growth in wild-type (WT) hosts, they failed to do so in *tlr4*^{-/-} mice, underlining the absolute requirement for TLR4

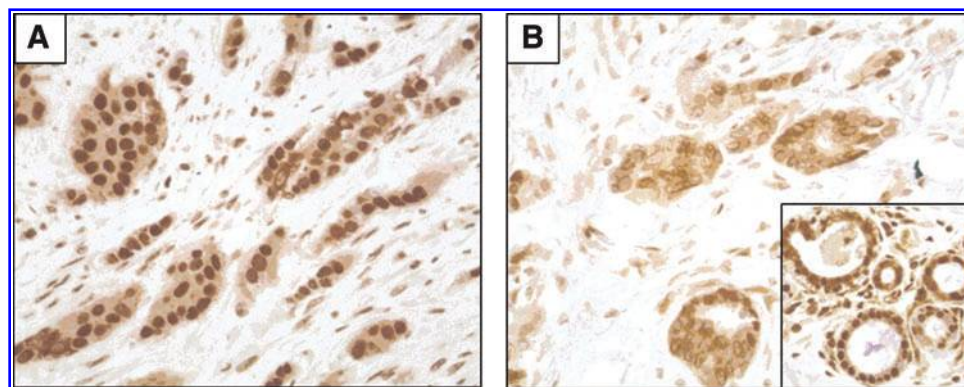


FIG. 4. Immunohistochemical HMGB1 staining of paraffin-embedded breast cancers. Representative results are shown for (A) breast cancer cells harboring strong nuclear staining, and (B) breast cancer cells that have lost nuclear staining (inset: normal mammary tissue harboring nuclear staining on the same slide). Magnification $\times 20$. (To see this illustration in color, the reader is referred to the web version of this article at www.liebertonline.com/ars.)

and its downstream effector MyD88 in the chemotherapy-induced control of tumor progression (5, 6). T cells were also mandatory for the observed antitumor effects, as athymic *nu/nu* mice failed to mount an efficient antitumor response after local treatment with radiotherapy or systemic chemotherapy (6). Interestingly, TLR4 appears to be required for efficient DC-mediated antigen presentation (5, 6). In fact, TLR4 has been shown to inhibit the lysosome-dependent degradation of phagosomes in macrophages (141). Accordingly, the kinetics of fusion between phagosomes and lysosomes was slower in WT DCs than in TLR4-deficient DCs loaded with dying tumor cells, which suggests that the TLR4 defect causes accelerated lysosomal degradation of the phagocytic cargo (Fig. 5). Thus, *TLR4*-deficient bone marrow-derived DCs were unable to present dying-cell-associated tumor antigens (engulfed by phagocytosis), although they retained the capacity to present antigens from soluble proteins (taken up by pinocytosis) (5, 6). Accordingly, the priming of CD8⁺T lymphocytes by DCs pulsed with cancer cells un-

dergoing ICD was markedly compromised in *tlr4*^{-/-} DC. Altogether, these data suggest that the TLR4/MyD88 pathway contributes to the success of ICD-mediated anti-cancer therapy.

Identification of the danger molecules that contribute to the immunogenicity of dying tumor cells was performed using the systematic comparison of putative TLR4 ligands released by oxaliplatin or anthracycline-treated tumor cells. These experiments revealed that HMGB1 molecules but not other known TLR4 ligands (such as heat shock proteins, fibrinogen, fibronectin, and beta-defensin 2) selectively accumulated at late time points in the supernatant of tumor cells undergoing ICD (as shown in Western Blotting and ELISA) (5). The release of HMGB1 from cancer cells that succumb to anthracycline or ionizing radiation was measurable within 18h after ICD induction and resulted, similar to CRT exposure, from a caspase-dependent process (5). HMGB1 first translocates from the nucleus to the cytoplasm and then, after the disruption of the plasma membrane, gets released into the

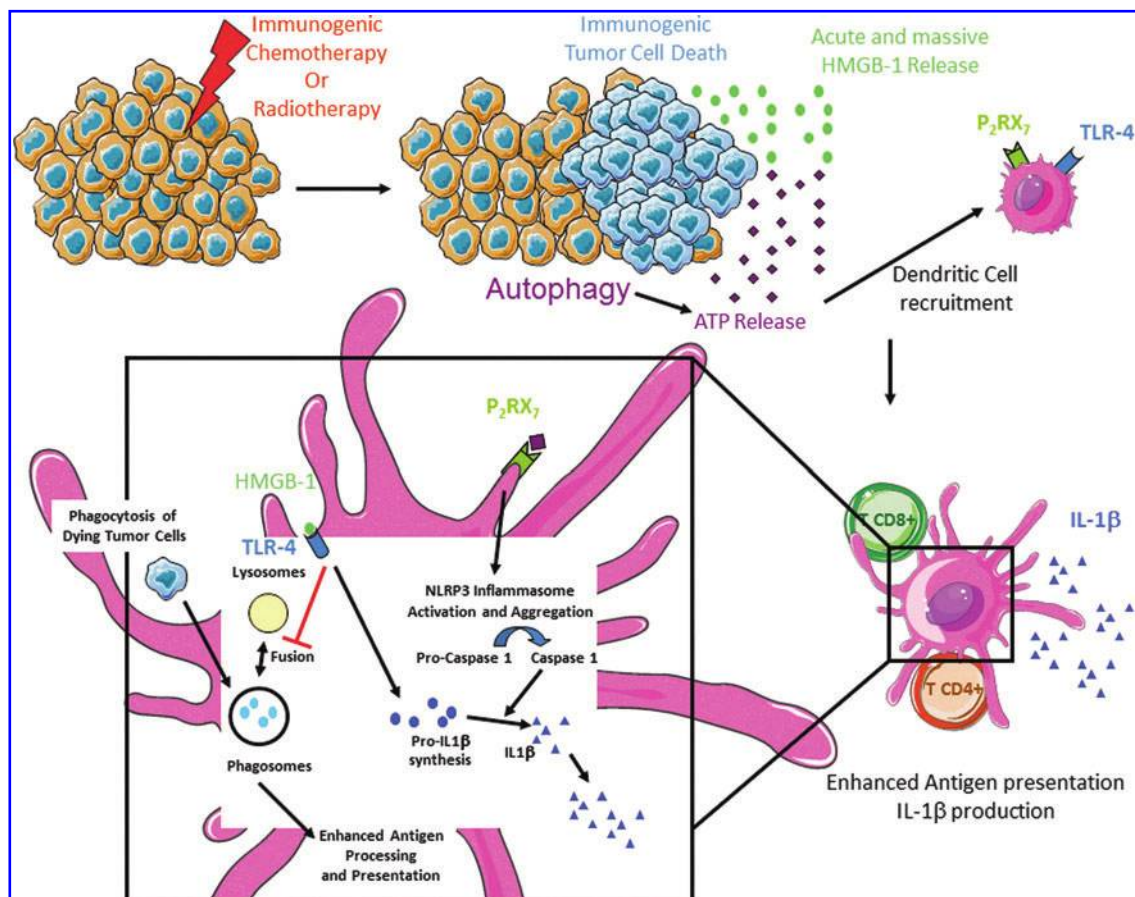


FIG. 5. HMGB-1 and adenosine tri-phosphate (ATP) release act as an immunogenic signal through TLR4 and P2RX7, respectively, culminating in enhanced antigen presentation and IL-1β production. After radiotherapy or immunogenic chemotherapy treatment, (immunogenic) tumor cell death leads to an acute HMGB-1 release. The ligation of HMGB-1 to its receptor, TLR4, inhibits the fusion of phagosomes (containing tumor antigens) and lysosomes, thereby allowing an enhanced antigen processing and presentation. ATP is released in an autophagy-dependent manner. Dendritic cells are recruited and activated *via* the purinergic receptor P₂RX₇. The ligation of ATP with its receptor leads to the activation and the aggregation of NLRP3 inflammasome that will, in turn, cleave the pro-caspase 1 into active caspase1. The recognition of HMGB-1 by TLR4 leads to the synthesis of pro-IL-1β, which will be split by caspase 1 into active IL-1β. Thus, HMGB-1 and ATP act in concert for activating the NLRP3 inflammasome in DCs, culminating in the secretion of IL-1β in the extracellular milieu. (To see this illustration in color, the reader is referred to the web version of this article at www.liebertonline.com/ars.)

extracellular space (147). The binding of HMGB1 to TLR4 was previously shown using fluorescence resonance energy transfer analyses and immunoprecipitation studies (112).

The release of HMGB1 and its interaction with TLR4 on the surface of DCs appears to be mandatory to prevent the fusion of phagosomes with lysosomes and the rapid degradation of tumor antigens (6). Hence, further experiments clearly showed that the ligation of TLR4 by HMGB1 is crucial for the priming of T cells by dying tumor cells. When either HMGB1 or TLR4 was absent from the system, dying tumor cells lost their immunogenicity *in vivo*. While usually engulfed by DCs, tumor cells were genetically modified to express an siRNA HMGB1 that exhibited reduced immunogenic potential on exposure to doxorubicine. Moreover, a neutralizing antibody directed against HMGB1 blunted antigen presentation of OVA antigens from dying EG7 cells to T cells *in vivo* (6).

The clinical relevance of the HMGB1/TLR4 pathway as a key determinant for the immunogenicity of dying tumor cells has been analyzed in retrospective clinical studies in N+ BC patients treated with adjuvant anthracyclines. Indeed, a *TLR4* single nucleotide polymorphism (SNP) rs4986790 has been associated with decreased responses to lipopolysaccharide (LPS: a well-known ligand of TLR4) (7). The single nucleotide substitution (+896A/G) in the *tlr4* gene leads to the replacement of an aspartic acid by a glycine (Asp299Gly) in the extracellular domain of TLR4 and is present in 12%–15% of Caucasians. Hence, alveolar epithelial cells from individuals bearing the Asp299Gly variant form of TLR4 lost their capacity to produce IL-1 α after LPS stimulation (7). Coimmunoprecipitation experiments showed that the expression of the variant form of TLR4 significantly decreases the binding of recombinant HMGB1 to TLR4 (6). Moreover, although monocyte-derived DCs from individuals bearing the normal allele of *TLR4* could cross-present antigens from dying melanoma cells to T cells in an HMGB1-dependent manner, DCs from individuals bearing the TLR4 Asp299Gly mutation failed to do so (6). In a retrospective analysis of the outcome of 280 localized-BC patients treated with local radiotherapy followed by adjuvant anthracycline-based chemotherapy, patients bearing the Asp299Gly variant *TLR4* SNP exhibited a markedly increased incidence of metastatic relapse, when compared with patients bearing the normal *TLR4* allele (6). In a multivariate analysis, carrying the TLR4 variant remained independently associated with poorer metastasis-free survival (6). The relevance of the TLR4 Asp299Gly SNP was corroborated in metastatic colon cancers treated with oxaliplatin-based chemotherapy (147).

Altogether, these results identified the interaction of HMGB1 released by dying tumor cells with the TLR4 receptor present in DCs as a major determinant for the cross-presentation of tumor antigens and the promotion of tumor-specific Tc1/Th1-cell responses, culminating in the success of some anticancer treatments (such as anthracyclines and oxaliplatin). It is interesting to note that other investigators have identified alternate DAMP which could mediate antigen processing of cell-associated antigens. Hence, Reis E Sousa's team demonstrated the critical role of DNGR1/CLEC9A expressing CD8a DC in the cross-presentation of necrotic tumor cells to T cells. Their team identified F-actin as the pivotal CLEC9A ligand promoting the processing of the phagocytic cargo by DC, highlighting how an evolutionary conserved cytoskeletal component can repre-

sent a relevant DAMP/CDAMP emanating from necrotic cells (1, 128, 129).

However, neither the addition of recombinant CRT nor HMGB1 as a stand-alone DAMP to live cancer cells is sufficient to induce an efficient presentation of tumor antigens by DCs, suggesting that additional factors should be exchanged between dying cells and DCs to induce a full-blown anticancer immune response.

ATP and Inflammasomes in Carcinogenesis and Cancer Immunogenicity

The possible contribution of receptors for DAMPs other than TLRs, which could account for the priming of IFN γ -producing T cells during anticancer chemotherapy, led to an investigation of the putative role of NOD-like receptors (NLRs) that could recognize putative CDAMP and link inflammation to innate immunity (44, 91). Indeed, some of the NLRs also sense nonmicrobial danger signals and form large cytoplasmic complexes called the inflammasome platforms (reviewed in (85, 138)). Inflammasomes are multiprotein complexes that operate as platforms activating caspase-1 and mediating the proteolytic maturation and secretion of pro-inflammatory cytokines (such as IL-1 and IL-18) (61, 138). Inflammasomes can be categorized according to their main constituent: NLRP1, NLRP3, NLRC4, NLRP6, and AIM2. In response to danger signals, the NLR, such as NLRP3, interact with the adaptor molecule apoptosis-associated speck like protein (ASC) to form the inflammasome, the principal caspase-1 activation complex.

Similar to HMGB1, these caspase-1 activation complexes have contrasting roles in the setting of cancer [reviewed in (169)]. First, inflammasomes were associated with pro-carcinogenic functions, especially in human cancers linked to chronic inflammatory processes such as gastric cancers (caused by *Helicobacter pylori* infection), liver carcinoma (resulting from viral infection), and colorectal cancer (favored by inflammatory bowel diseases) (51, 133). In these contexts, preclinical and clinical data indicate that IL-1 β can directly drive oncogenesis (66, 123, 150) or suppress immunosurveillance mechanisms through the recruitment and the activation of myeloid-derived suppressor cells (MDSCs) (15, 150, 152), thus facilitating tumor development. In melanoma or multiple myeloma, tumor cells are able to produce and secrete IL-1 β that confers a proliferative advantage to cancer cells through autocrine or paracrine mechanisms (79, 105, 119). Similarly, IL-1 β can also convert fibroblasts into tumor-associated fibroblasts, generating a tumor microenvironment that favors cancer progression (134). IL-1 may also favor tumor invasiveness, metastatic spreading, and tumor-driven angiogenesis (35, 99, 135, 156, 160). Moreover, IL-18 secreted by tumor cells can suppress the antimetastatic functions of NK cells in mice (146).

Conversely, in the setting of cancer cell demise, there is growing evidence which suggests that the inflammasome or its products (particularly IL-1 β) can also sustain immune response against dying tumor cells, especially in chemotherapy-elicited anticancer immune responses. Indeed, the inflammasome NLRP3 appeared mandatory for the efficacy of some chemotherapies (49). In oxaliplatin-treated mouse tumor models, each individual player of this complex (NLRP3, its adaptor molecule ASC, or caspase-1 or IL-1 β /IL-1R1), or its final

product IL-1 β , was required for the immunogenicity of cell death as well as for the success of chemotherapy (5). Similar results were obtained in other tumor models treated with anthracyclines (49). Hence, caspase-1-deficiency resulted in reduced IFN- γ production by tumor antigen-specific CD8 $^+$ T cells in tumor draining lymph nodes (49). IL-1 β appears to be a key contributor for the full differentiation of IFN- γ polarized CD8 $^+$ T cells during the priming phase of antitumor immune responses in these models. Indeed, in the absence of the IL-1R1 or in the presence of IL-1 receptor antagonist, dying tumor cells failed to prime cancer-specific IFN- γ -producing CD8 $^+$ T cells (49).

Multiple distinct bacterial products or endogenous damage signals (such as toxins, ATP, uric acid crystals, alum, and silica) are able to stimulate the NLRP3 inflammasome, resulting in the proteolytic auto-activation of caspase-1 (60, 82, 103). One of the most abundant activators of the NLRP3 inflammasome is extracellular ATP, which is released from stressed cells and acts on purinergic receptors (26). ATP has an important pro-inflammatory role as a danger signal, especially when released in the extracellular environment in response to tissue damage and cellular stress. Through the activation of P $_2$ \times and P $_2$ Y receptors, extracellular ATP enhances tissue repair, promotes the recruitment of immune phagocytes and DCs, and acts as a co-activator of NLRP3 inflammasome. ATP may be released from the mitochondria of necrotic cells (58) or can be secreted in an active, caspase- and autophagy-dependent way by apoptotic cells (87, 95). Once in the extracellular space, ATP may attract and activate innate effector cells of the immune system into the tumor bed (56), at least in part by binding P $_2$ Y $_2$ purinergic receptors (37), thus also constituting a "find me" signal (37). Accordingly, expression of the ectonucleoside triphosphate diphosphohydrolase (ENTPD1, an ATP-degrading enzyme) reduced the chemoattractiveness of apoptotic cells (37).

Recent findings indicate that ATP is released by dying tumor cells succumbing to many chemotherapeutic agents (such as cadmium, etoposide, mitomycin C, oxaliplatin, cisplatin, staurosporine, thapsigargin, mitoxanthrone, or doxorubicin) (87, 95). This ATP release became undetectable when cells were incubated with the ATP-degrading enzyme apyrase or with inhibitors of ATP synthesis such as antimycin A plus deoxyglucose (A/D) or the oxidative phosphorylation uncoupler 2,4-dinitrophenol. When oxaliplatin- or anthracycline-treated cancer cell lines were admixed with these ATP scavengers or nonselective P $_2$ \times receptor antagonists (iso-pyridoxal phosphate-6-azophenyl-2',5'-disulphonate or oxidized ATP), they lost their capacity to elicit protective antitumor immune responses on subcutaneous inoculation into immunocompetent mice (49). Thus, ATP appears to be mandatory for the efficacy of some chemotherapeutic agents, especially immunogenic treatments (radiotherapy, anthracyclines, and oxaliplatin). Tumor cells manipulated to express the ATP ectonucleotidase CD39 on their surface or to be deficient in essential proteins of the autophagic machinery can usually undergo apoptosis *in vitro* and *in vivo*, yet failed to trigger an ICD pattern and to respond to chemotherapy (95). Importantly, the immunogenicity of autophagy-deficient or CD39-overexpressing tumor cells could be restored by the administration of inhibitors of extracellular ATPases (which increase pericellular ATP concentrations) or by the administration of recombinant IL-1 β (170).

The high-affinity receptor for ATP present in DCs is the purinergic P $_2$ RX $_7$ receptor (40). ATP stimulates P $_2$ RX $_7$, thus activating the NLRP3/ASC/caspase-1 inflammasome and driving the secretion of IL-1 β (49) (Fig. 5). The IFN- γ -polarized CD8 $^+$ T-cell response of P $_2$ RX $_7$ $^{-/-}$ mice to oxaliplatin is reduced, and these animals fail to control the progression of established tumors under oxaliplatin treatment (49). Functional P $_2$ RX $_7$ receptor on host DCs was mandatory for the chemotherapy-elicited anticancer immune response, as the adoptive transfer of bone marrow-derived WT (but not in P $_2$ RX $_7$ $^{-/-}$) DCs loaded with dying tumor cells restored the tumor antigen-specific CD8 $^+$ T-cell response that had been originally impaired in P $_2$ RX $_7$ $^{-/-}$ mice (49).

Altogether, these results are compatible with a scenario in which a danger signal, ATP, activates P $_2$ RX $_7$ receptors on DCs, thereby stimulating the aggregation and/or activation of the NLRP3/ASC/Casp-1 inflammasome; then the proteolytic maturation of caspase-1, pro-IL-1 β cleavage, and consequent IL-1 β release (Fig. 5). Then, IL-1 β is required for the priming of IFN γ -producing tumor antigen-specific CD8 $^+$ T cells (Th1/Tc1), and, thus, for the chemotherapy-elicited anticancer immune response (49). These data suggest that ICD induced by chemotherapy could influence the composition of the immune infiltrate present in tumors, which, in turn, could affect the therapeutic response. Supporting this assumption, we reported that autophagy-deficient tumors failed to attract DC and to accumulate IL-17-producing $\gamma\delta$ T cells as well as IFN- γ -producing CD8 $^+$ T cells in tumor beds post-immunogenic chemotherapy, unless apyrase inhibitors be supplied to the tumor microenvironment (Fig. 6) (80, 88). When binding to IL-1R1, IL-1 β (most likely produced by antigen-presenting cells exposed to dying bodies) attracts $\gamma\delta$ T cells to the tumor site, leading to local production of IL-17 and the secondary recruitment of IFN- γ -producing CD8 $^+$ $\alpha\beta$ T cells, eventually causing the lysis of tumor cells. Although the molecular links between $\gamma\delta$ T17 and cytotoxic T lymphocytes (CTLs) were not elucidated, the percentage of $\gamma\delta$ T17 cells appeared closely correlated with the frequency of IFN- γ -producing CD8 $^+$ T lymphocytes in the tumor microenvironment. Accordingly, in the absence of $\gamma\delta$ T17 or IL-17, the priming of adaptive anticancer Th1/Tc1 responses was hampered, suggesting a helper role of $\gamma\delta$ T17 cells in the context of ICD (80, 88).

Accordingly, the TLR4 ligand HMGB1 and ATP, both of which are released by tumor cells exposed to cytotoxic agents, act in concert to promote IL-1 β secretion by DCs. The treatment of DCs with oxidized ATP or anti-HMGB1-neutralizing antibodies before loading with dying tumor cells completely abolished IL-1 β secretion (49). As for the HMGB1/TLR4 interaction, the integrity of this ATP/P $_2$ RX $_7$ pathway appeared to be clinically relevant, at least in N+ BCs, as loss-of-function alleles of P $_2$ RX $_7$, which confer a reduced affinity of P $_2$ RX $_7$ receptor for ATP, compromised the efficacy of anthracycline-based chemotherapy (49). Supporting this notion, relative elevated expression of *ENTPD1* mRNA (which encodes the ectonucleotidase CD39) was associated with a poor outcome in colorectal cancer (73). Similarly, CD73, an ecto-5' nucleotidase that acts downstream of CD39 to convert AMP into adenosine, was overexpressed in some human tumors (Table 1). CD73-deficient mice were protected against metastatic spreading, and harbor increased antitumor immunity (142). Together, these observations suggest that ATP-dependent,

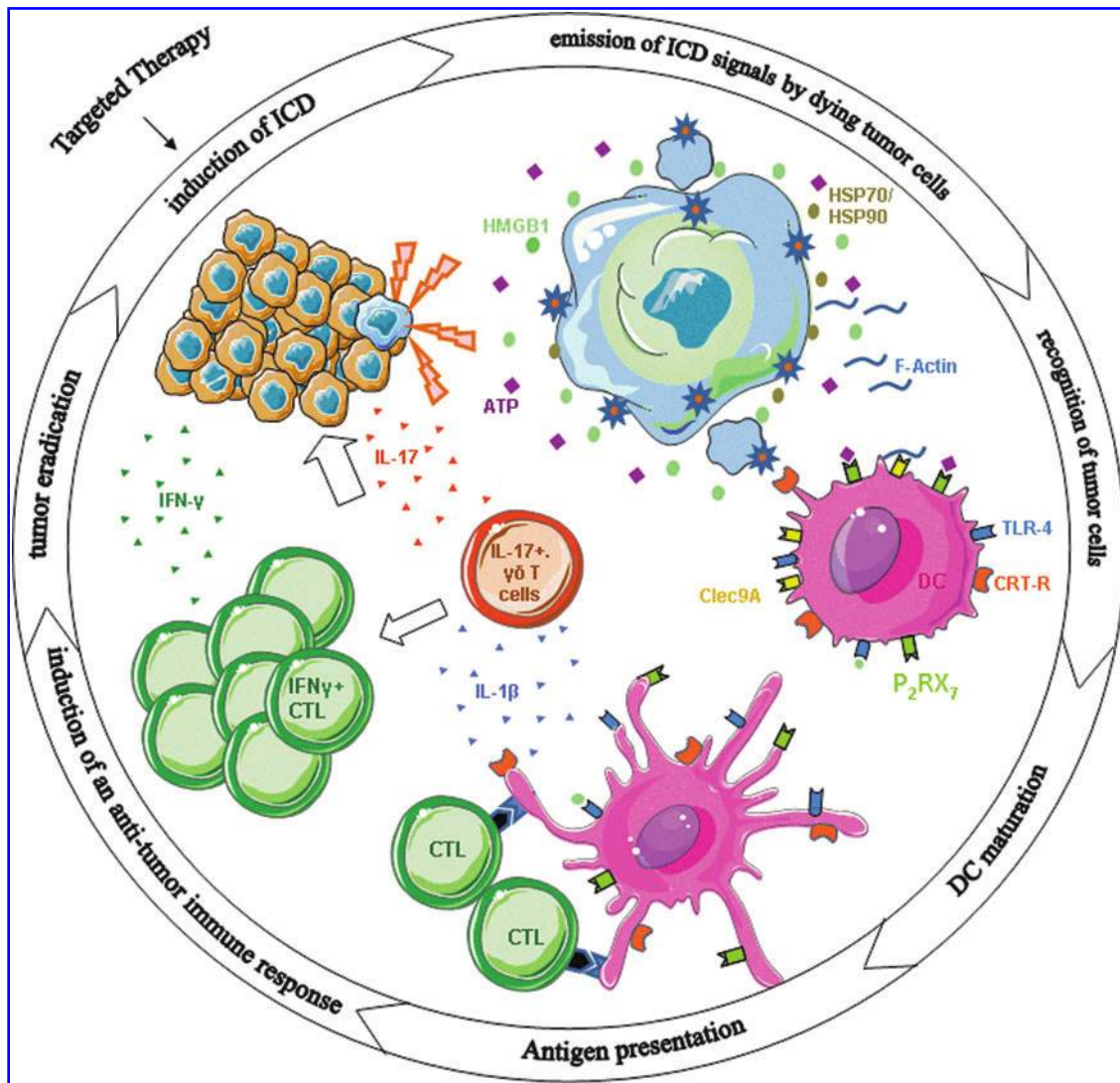


FIG. 6. Induction of an antitumor immune response by ICD. (i) Chemotherapy induces early exposure of ecto-CRT, which acts as an “eat-me” signal and facilitates the recognition and uptake of tumor cells by DC. HSP70 and HSP90 enhance antigen cross-presentation and the release of pro-inflammatory cytokines. The release of F-actin also enhances antigen cross-presentation. (ii) The release of HMGB1 and ATP by tumor cells promotes the antigen-processing/presentation and the release of IL-1 β by DC. (iii) This spatiotemporal code licences the polarization of CD8⁺ T cells toward IFN γ production, leading to complete tumor eradication. (To see this illustration in color, the reader is referred to the web version of this article at www.liebertonline.com/ars.)

P₂RX₇-mediated activation of the inflammasome might also be clinically relevant for the efficacy of anticancer therapies in patients (49).

Perspectives

ICD has now entered the field of cancer immunization and vaccines (69). The comprehensive understanding of the mechanisms governing the immunogenicity of cancer cell death could have a profound impact on the current management of cancer patients. It pertains not only to the use of distinct chemotherapy compounds or various regimens of radiotherapy but also to the use of “targeted” drugs. As an example, trastuzumab efficacy stems from a functional TLR4 pathway and is boosted by TLR4 agonists (113, 159, 164).

The first obvious and direct clinical implementation of these observations is the subversion of an “immune checkpoint blockade.” Tumors have evolved many immunosuppressive mechanisms to turn down the innate and the effector arms of the immune system. After the pioneering success of Ipilimumab in metastatic melanoma, investigators have conducted trials that are aimed at curtailing the other immune checkpoints. Both CTLA4 and the B7-H1 (PD-L1)/PD-1/B7.1 axis are best understood among the inhibitory B7-H family members featuring in the relevant “immune checkpoint blockers.” The therapeutic potential of novel immune checkpoint blockers (14, 149) has been recently highlighted in advanced cancer patients, including patients harboring lung or brain metastases. ICD may lead to anticancer immune responses that will be unleashed by such immune checkpoint blockers. The current issue is to analyze which regimen of

TABLE 1. STUDIES CORRELATING CD73 OR CD39 EXPRESSION AND HUMAN TUMOR PROGNOSIS

<i>Histology</i>	<i>CD39 & CD73 expression</i>	<i>Prognosis values</i>	<i>Number of patients (n)</i>	<i>Ref</i>
ALL	Significant lower expression of CD73 in T-ALL compared with pre-B-ALL & C-ALL	CD73 expression is not correlated with prognosis	n = 411	(162)
		Higher percentage of CR in CD73+ ALL than in CD73-ALL (<i>p</i> < 0.05)	n = 79	(153)
Breast cancer	Higher CD73 enzymatic activity in tumors versus healthy tissues	Poor outcome associated with high level of CD73 expression in primary tumor	n = 21 M1; 9 M0; 15 R + 15 NR paired	(75)
			n = 9 stage II; 6 stage IIIa; 9 noncancerous tissues from stage II	(16)
CLL	32% of CLL expressed CD73	CD39 expression is associated with late stages of disease, whereas CD73+ clones are associated with early stages of disease	n = 34 & 31 healthy controls n = 299	(118) (140)
CRC	Higher CD73 enzymatic activity in primary tumors than in normal mucosa	CD73+ CRC correlated with a poor OS	training cohort: n = 223 validation cohort: n = 135	(163)
			n = 38	(38)
		Higher CD39+ CRC are associated with a lower OS	n = 63	(73)
EOC	29/36 EOC are positive for CD39 expression, and 31/34 are positive for CD73 expression	Overexpression of CD73 EOC is associated with better prognosis (73% of 5 years OS versus 50% for CD73+ and CD73-, respectively)	n = 167 n = 36	(104) (54)
			n = 7 grade I-II; 8 grade III-IV; 9 noncancerous tissues from stages I to II	(34)
GBM	95% of GBM are CD73+		n = 165	(78)
PTC	CD73 expression by PTC		n = 3	(63)

ALL, acute lymphoblastic leukemia; T-ALL, T-lineage ALL; C-ALL, common ALL; CR, complete response; M1, distant metastases; M0, no distant metastases; R, relapse within a 10 year period; NR, without relapse within a 10 year period; CLL, chronic lymphoblastic leukemia; CRC, colorectal cancer; OS, overall survival; EOC, epithelial ovarian carcinoma; GBM, glioblastoma; PTC, papillary thyroid carcinoma.

combinatorial therapies (dose and scheduling) will be most suitable to achieve a synergistic anticancer efficacy.

Second, since human cancers carry hundreds of non-synonymous mutations (several dozens among which lead to the generation of tumor-specific MHC class I-restricted epitopes), every patient's tumor harbors a highly specific mutational and antigenic signature. This "mutanome" can be identified by deep sequencing and can lead to individualized immunotherapies by means of ICD-inducing compounds and/or tailored vaccines (68). Clinical trials are ongoing and are aimed at combining anthracyclines or oxaliplatin and mutanome-derived mRNA epitopes in BCs (Biontech.de).

As already demonstrated, the propensity of tumor cells to undergo ICD *in vitro* can be exploited toward the therapeutic success of DC-based anticancer vaccines. In indolent B-cell lymphoma patients, antitumor responses were not observed when autologous tumor vaccines failed to harbor the ICD-related hallmarks (166). As mentioned earlier, in cohorts of breast or colon cancer patients treated with adjuvant anthracycline and local radiotherapy or oxaliplatin, respectively, genetic defects in the TLR4 or P₂RX₇ axis compromised the efficacy of these treatments (6, 49, 147).

However, it is anticipated that exploiting the ICD concept will require a "complete profiling" of the drug-tumor-host putative interactions (Fig. 7). First, compounds should be screened for their capacity to trigger an ICD pattern. The most prominent bottleneck is the failure of most anticancer drugs to trigger an ER stress response, culminating in CRT exposure (93). Hence, although cisplatin alone does not induce the preapoptotic exposure of CRT, it can do so in combination with the ER stressor thapsigargin, *de facto* rendering cisplatin-induced cell death immunogenic (86). Many novel ER stressors are currently developed and may enter the clinical armamentarium (137). Otherwise, recombinant CRT directly supplied into the tumor bed can compensate for the lack of ER stress response of a given pro-apoptotic compound (101). Second, tumors should exhibit the appropriate machinery to undergo proper ER stress, autophagy, and apoptosis responses when subjected to a tumoricidal compound. Hence, tumors defective in ERp57, HMGB1, or Atg5 will not die in an immunogenic manner and need appropriate compensatory therapies (6, 95, 110) (Fig. 7). We could speculate that failure of HMGB1 release could be compensated by administration of other potent TLR4/Myd88 agonists. Pharmacological inhibitors of extracellular ATPases, which can increase ATP

	Required for Immunogenic Cell Death	Compensatory Therapy
Drug	ER Stress Autophagy Cell Death	ER Stressors Glycolysis inhibitors ATP Segretagogues Apoptosis inducers
Tumor	CRT Exposure ATP secretion HMGB-1 release	rCRT ATP agonists TLR4/MyD88 agonists
Host	CD91 P2RX7/ NLRP3/IL-1 β TLR4 / MyD88 CD4+ and CD8+ T cells IL-17, IFN γ	Ecto-nucleotidase inhibitors (ex: anti-CD39) Chloroquine TLR agonists rIL-1 β / rIL-12

FIG. 7. Compensatory strategies to achieve immunogenic cell death. To achieve immunogenic cell death, drugs should be able to induce ER stress, autophagy, and cell death. Tumors should be able to expose the CRT and to secrete ATP and HMGB-1. Finally, the host should be able to sense all these immunogenic signals, through appropriate receptors, leading to the recruitment of immune effector cells. Thus, the lack of one of the parameters listed earlier would compromise the response to chemotherapy. In such a scenario, compensatory strategies can be proposed to specifically complement the missing factor, when possible, with the aim of restoring the immunogenicity of tumor cell death. (To see this illustration in color, the reader is referred to the web version of this article at www.liebertonline.com/ars.)

concentration during ICD, could favor an efficient IFN- γ -polarized T-cell response against tumor cells (95). Novel antibodies targeting CD39 (10) could be of particular interest should the safety profile be ascertained. Third, hosts presenting with genetic defects compromising sensing of danger signals may fail to optimally respond to cell death in an immunogenic fashion. Compensation of TLR4 deficiency may rely on the administration of other TLR ligands to boost antitumor immune responses. Thus, administration of specific ligands of TLR3 or TLR9 after irradiation could restore potent antitumor effects in *TLR4*-deficient mice (5).

It is our hope that future anticancer strategies could be tailored to each patient and a tumor's genetic background, taking into account not only the cytotoxic properties of anticancer agents, but also their capacity to stimulate a host's innate and acquired immune responses. Hence, taking into account these parameters will lead either to a stratification of patients according to various categories pertaining to the tumor profile for ICD hallmarks only or to a personalization according to a complex algorithm retaining in the model the host genetic defects, the resistance to apoptosis, the lack of ICD, and the mutational status of the cancer.

Acknowledgments

This study was supported by the Ligue Nationale Contre le Cancer (Equipes Labellisée; L.Z. and G.K.), Agence Nationale pour la Recherche (L.Z. and G.K.), Fondation pour la Recherche Médicale (L.Z. and G.K.), Institut National du Cancer (L.Z. and G.K.), Cancéropôle Ile-de-France (L.Z. and G.K.), the European Commission (Apo-Sys (L.Z., G.K.), ArtForce (L.Z. and G.K.), ChemoRes (L.Z. and G.K.) and

Death-Train (L.Z. and G.K.)), LabEx OncoImmunology (L.Z. and G.K.) and Institut National de la Santé et de la Recherche Médicale (O.K.), and Association pour la recherche sur le cancer (D.H.).

References

- Ahrens S, Zelenay S, Sancho D, Hanc P, Kjaer S, Feest C, Fletcher G, Durkin C, Postigo A, Skehel M, Batista F, Thompson B, Way M, Reis e Sousa C, and Schulz O. F-actin is an evolutionarily conserved damage-associated molecular pattern recognized by DNGR-1, a receptor for dead cells. *Immunity* 36: 635–645, 2012.
- Ait-Tahar K, Barnardo MC, and Pulford K. CD4 T-helper responses to the anaplastic lymphoma kinase (ALK) protein in patients with ALK-positive anaplastic large-cell lymphoma. *Cancer Res* 67: 1898–1901, 2007.
- Ait-Tahar K, Cerundolo V, Banham AH, Hatton C, Blanchard T, Kusec R, Becker M, Smith GL, and Pulford K. B and CTL responses to the ALK protein in patients with ALK-positive ALCL. *Int J Cancer* 118: 688–695, 2006.
- Albert ML, Sauter B, and Bhardwaj N. Dendritic cells acquire antigen from apoptotic cells and induce class I-restricted CTLs. *Nature* 392: 86–89, 1998.
- Apetoh L, Ghiringhelli F, Tesniere A, Criollo A, Ortiz C, Lidereau R, Mariette C, Chaput N, Mira JP, Delaloge S, Andre F, Tursz T, Kroemer G, and Zitvogel L. The interaction between HMGB1 and TLR4 dictates the outcome of anticancer chemotherapy and radiotherapy. *Immunol Rev* 220: 47–59, 2007.
- Apetoh L, Ghiringhelli F, Tesniere A, Obeid M, Ortiz C, Criollo A, Mignot G, Maiuri MC, Ullrich E, Saulnier P, Yang H, Amigorena S, Ryffel B, Barrat FJ, Saftig P, Levi F, Lidereau R, Nagues C, Mira JP, Chompret A, Joulin V, Clavel-Chapelon F, Bourhis J, Andre F, Delaloge S, Tursz T, Kroemer G, and Zitvogel L. Toll-like receptor 4-dependent contribution of the immune system to anticancer chemotherapy and radiotherapy. *Nat Med* 13: 1050–1059, 2007.
- Arbour NC, Lorenz E, Schutte BC, Zabner J, Kline JN, Jones M, Frees K, Watt JL, and Schwartz DA. TLR4 mutations are associated with endotoxin hyporesponsiveness in humans. *Nat Genet* 25: 187–191, 2000.
- Aycheh T, Miller K, Sagi-Assif O, Levy-Nissenbaum O, Israeli-Amit M, Pasmanik-Chor M, Jacob-Hirsch J, Amariglio N, Rechavi G, and Witz IP. E-selectin regulates gene expression in metastatic colorectal carcinoma cells and enhances HMGB1 release. *Int J Cancer* 123: 1741–1750, 2008.
- Bartling B, Hofmann HS, Weigle B, Silber RE, and Simm A. Down-regulation of the receptor for advanced glycation end-products (RAGE) supports non-small cell lung carcinoma. *Carcinogenesis* 26: 293–301, 2005.
- Bastid J, Cottalorda-Regairaz A, Alberici G, Bonnefoy N, Eliaou JF, and Bensussan A. ENTPD1/CD39 is a promising therapeutic target in oncology. *Oncogene* 2012. [Epub ahead of print]; DOI: 10.1038/onc.2012.269.
- Bell CW, Jiang W, Reich CF, 3rd, and Pisetsky DS. The extracellular release of HMGB1 during apoptotic cell death. *Am J Physiol Cell Physiol* 291: C1318–C1325, 2006.
- Beneteau M, Zunino B, Jacquin MA, Meynet O, Chiche J, Pradelli LA, Marchetti S, Cornille A, Carles M, and Ricci JE. Combination of glycolysis inhibition with chemotherapy results in an antitumor immune response. *Proc Natl Acad Sci U S A* 109: 20071–20076, 2012.
- Bonaldi T, Talamo F, Scaffidi P, Ferrera D, Porto A, Bachi A, Rubartelli A, Agresti A, and Bianchi ME. Monocytic cells

- hyperacetylate chromatin protein HMGB1 to redirect it towards secretion. *EMBO J* 22: 5551–5560, 2003.
14. Brahmer JR, Tykodi SS, Chow LQ, Hwu WJ, Topalian SL, Hwu P, Drake CG, Camacho LH, Kauh J, Odunsi K, Pitot HC, Hamid O, Bhatia S, Martins R, Eaton K, Chen S, Salay TM, Alaparthi S, Grosso JF, Korman AJ, Parker SM, Agrawal S, Goldberg SM, Pardoll DM, Gupta A, and Wigginton JM. Safety and activity of anti-PD-L1 antibody in patients with advanced cancer. *N Engl J Med* 366: 2455–2465, 2012.
 15. Bunt SK, Yang L, Sinha P, Clements VK, Leips J, and Ostrand-Rosenberg S. Reduced inflammation in the tumor microenvironment delays the accumulation of myeloid-derived suppressor cells and limits tumor progression. *Cancer Res* 67: 10019–10026, 2007.
 16. Canbolat O, Durak I, Cetin R, Kavutcu M, Demirci S, and Ozturk S. Activities of adenosine deaminase, 5'-nucleotidase, guanase, and cytidine deaminase enzymes in cancerous and non-cancerous human breast tissues. *Breast Cancer Res Treat* 37: 189–193, 1996.
 17. Casares N, Pequignot MO, Tesniere A, Ghiringhelli F, Roux S, Chaput N, Schmitt E, Hamai A, Hervas-Stubbs S, Obeid M, Coutant F, Metivier D, Pichard E, Aucouturier P, Pieron G, Garrido C, Zitvogel L, and Kroemer G. Caspase-dependent immunogenicity of doxorubicin-induced tumor cell death. *J Exp Med* 202: 1691–1701, 2005.
 18. Chao MP, Jaiswal S, Weissman-Tsukamoto R, Alizadeh AA, Gentles AJ, Volkmer J, Weiskopf K, Willingham SB, Raveh T, Park CY, Majeti R, and Weissman IL. Calreticulin is the dominant pro-phagocytic signal on multiple human cancers and is counterbalanced by CD47. *Sci Transl Med* 2: 63ra94, 2010.
 19. Chavakis E, Hain A, Vinci M, Carmona G, Bianchi ME, Vajkoczy P, Zeiher AM, Chavakis T, and Dimmeler S. High-mobility group box 1 activates integrin-dependent homing of endothelial progenitor cells. *Circ Res* 100: 204–212, 2007.
 20. Chiba S, Baghdadi M, Akiba H, Yoshiyama H, Kinoshita I, Dosaka-Akita H, Fujioka Y, Ohba Y, Gorman JV, Colgan JD, Hirashima M, Uede T, Takaoka A, Yagita H, and Jinushi M. Tumor-infiltrating DCs suppress nucleic acid-mediated innate immune responses through interactions between the receptor TIM-3 and the alarmin HMGB1. *Nat Immunol* 13: 832–842, 2012.
 21. Choi JJ, Reich CF, 3rd, and Pisetsky DS. Release of DNA from dead and dying lymphocyte and monocyte cell lines *in vitro*. *Scand J Immunol* 60: 159–166, 2004.
 22. Choi YR, Kim H, Kang HJ, Kim NG, Kim JJ, Park KS, Paik YK, and Kim HO. Overexpression of high mobility group box 1 in gastrointestinal stromal tumors with KIT mutation. *Cancer Res* 63: 2188–2193, 2003.
 23. Das D, Peterson RC, and Scovell WM. High mobility group B proteins facilitate strong estrogen receptor binding to classical and half-site estrogen response elements and relax binding selectivity. *Mol Endocrinol* 18: 2616–2632, 2004.
 24. DeNardo DG, Brennan DJ, Rexhepaj E, Ruffell B, Shiao SL, Madden SF, Gallagher WM, Wadhvani N, Keil SD, Junaid SA, Rugo HS, Hwang ES, Jirstrom K, West BL, and Coussens LM. Leukocyte complexity predicts breast cancer survival and functionally regulates response to chemotherapy. *Cancer Discov* 1: 54–67, 2011.
 25. Denkert C, Loibl S, Noske A, Roller M, Muller BM, Komor M, Budczies J, Darb-Esfahani S, Kronenwett R, Hanusch C, von Torne C, Weichert W, Engels K, Solbach C, Schrader I, Dietel M, and von Minckwitz G. Tumor-associated lymphocytes as an independent predictor of response to neoadjuvant chemotherapy in breast cancer. *J Clin Oncol* 28: 105–113, 2010.
 26. Di Virgilio F. Liaisons dangereuses: P2X(7) and the inflammasome. *Trends Pharmacol Sci* 28: 465–472, 2007.
 27. Disis ML. Immune regulation of cancer. *J Clin Oncol* 28: 4531–4538, 2010.
 28. This reference has been deleted.
 29. Ditsworth D, Zong WX, and Thompson CB. Activation of poly(ADP)-ribose polymerase (PARP-1) induces release of the pro-inflammatory mediator HMGB1 from the nucleus. *J Biol Chem* 282: 17845–17854, 2007.
 30. Donato R. Intracellular and extracellular roles of S100 proteins. *Microsc Res Tech* 60: 540–551, 2003.
 31. Dong Xda E, Ito N, Lotze MT, Demarco RA, Popovic P, Shand SH, Watkins S, Winikoff S, Brown CK, Bartlett DL, and Zeh HJ, 3rd. High mobility group box I (HMGB1) release from tumor cells after treatment: implications for development of targeted chemoimmunotherapy. *J Immunother* 30: 596–606, 2007.
 32. Dumitriu IE, Baruah P, Valentinis B, Voll RE, Herrmann M, Nawroth PP, Arnold B, Bianchi ME, Manfredi AA, and Rovere-Querini P. Release of high mobility group box 1 by dendritic cells controls T cell activation via the receptor for advanced glycation end products. *J Immunol* 174: 7506–7515, 2005.
 33. Dumitriu IE, Bianchi ME, Bacci M, Manfredi AA, and Rovere-Querini P. The secretion of HMGB1 is required for the migration of maturing dendritic cells. *J Leukoc Biol* 81: 84–91, 2007.
 34. Durak H, Ertay T, Sayit E, Aktogu S, Kut O, Guven H, and Gure A. Lung clearance of aerosolized 99mTc erythromycin lactobionate in rabbits. *Nucl Med Biol* 23: 291–293, 1996.
 35. Elaraj DM, Weinreich DM, Varghese S, Puhlmann M, Hewitt SM, Carroll NM, Feldman ED, Turner EM, and Alexander HR. The role of interleukin 1 in growth and metastasis of human cancer xenografts. *Clin Cancer Res* 12: 1088–1096, 2006.
 36. Ellerman JE, Brown CK, de Vera M, Zeh HJ, Billiar T, Rubartelli A, and Lotze MT. Masquerader: high mobility group box-1 and cancer. *Clin Cancer Res* 13: 2836–2848, 2007.
 37. Elliott MR, Chekeni FB, Trampont PC, Lazarowski ER, Kadl A, Walk SF, Park D, Woodson RI, Ostankovich M, Sharma P, Lysiak JJ, Harden TK, Leitinger N, and Ravichandran KS. Nucleotides released by apoptotic cells act as a find-me signal to promote phagocytic clearance. *Nature* 461: 282–286, 2009.
 38. Eroglu A, Canbolat O, Demirci S, Kocaoglu H, Eryavuz Y, and Akgul H. Activities of adenosine deaminase and 5'-nucleotidase in cancerous and noncancerous human colorectal tissues. *Med Oncol* 17: 319–324, 2000.
 39. Fages C, Nolo R, Huttunen HJ, Eskelinen E, and Rauvala H. Regulation of cell migration by amphoterin. *J Cell Sci* 113 (Pt 4): 611–620, 2000.
 40. Ferrari D, Pizzirani C, Adinolfi E, Lemoli RM, Curti A, Idzko M, Panther E, and Di Virgilio F. The P2X7 receptor: a key player in IL-1 processing and release. *J Immunol* 176: 3877–3883, 2006.
 41. Finn OJ. Cancer immunology. *N Engl J Med* 358: 2704–2715, 2008.
 42. Flohr AM, Rogalla P, Meiboom M, Borrmann L, Krohn M, Thode-Halle B, and Bullerdiek J. Variation of HMGB1 expression in breast cancer. *Anticancer Res* 21: 3881–3885, 2001.

43. Formenti SC and Demaria S. Effects of chemoradiation on tumor-host interactions: the immunologic side. *J Clin Oncol* 26: 1562–1563; author reply 1563, 2008.
44. Fritz JH, Ferrero RL, Philpott DJ, and Girardin SE. Nod-like proteins in immunity, inflammation and disease. *Nat Immunol* 7: 1250–1257, 2006.
45. Fucikova J, Kralikova P, Fialova A, Brtnicky T, Rob L, Bartunkova J, and Spisek R. Human tumor cells killed by anthracyclines induce a tumor-specific immune response. *Cancer Res* 71: 4821–4833, 2011.
46. Galon J, Costes A, Sanchez-Cabo F, Kirilovsky A, Mlecnik B, Lagorce-Pages C, Tosolini M, Camus M, Berger A, Wind P, Zinzindohoue F, Bruneval P, Cugnenc PH, Trajanoski Z, Fridman WH, and Pages F. Type, density, and location of immune cells within human colorectal tumors predict clinical outcome. *Science* 313: 1960–1964, 2006.
47. Gardai SJ, Bratton DL, Ogden CA, and Henson PM. Recognition ligands on apoptotic cells: a perspective. *J Leukoc Biol* 79: 896–903, 2006.
48. Garg AD, Krysko DV, Verfaillie T, Kaczmarek A, Ferreira GB, Marysael T, Rubio N, Firczuk M, Mathieu C, Roebroek AJ, Annaert W, Golab J, de Witte P, Vandenabeele P, and Agostinis P. A novel pathway combining calreticulin exposure and ATP secretion in immunogenic cancer cell death. *EMBO J* 31: 1062–1079, 2012.
49. Ghiringhelli F, Apetoh L, Tesniere A, Aymeric L, Ma Y, Ortiz C, Vermaelen K, Panaretakis T, Mignot G, Ullrich E, Perfettini JL, Schlemmer F, Tadmair E, Uhl M, Genin P, Civas A, Ryffel B, Kanellopoulos J, Tschopp J, Andre F, Lidereau R, McLaughlin NM, Haynes NM, Smyth MJ, Kroemer G, and Zitvogel L. Activation of the NLRP3 inflammasome in dendritic cells induces IL-1beta-dependent adaptive immunity against tumors. *Nat Med* 15: 1170–1178, 2009.
50. Green DR, Ferguson T, Zitvogel L, and Kroemer G. Immunogenic and tolerogenic cell death. *Nat Rev Immunol* 9: 353–363, 2009.
51. Grivennikov SI, Greten FR, and Karin M. Immunity, inflammation, and cancer. *Cell* 140: 883–899, 2010.
52. Halama N, Michel S, Kloor M, Zoernig I, Benner A, Spille A, Pommerencke T, von Knebel DM, Folprecht G, Lubber B, Feyen N, Martens UM, Beckhove P, Gnjatich S, Schirmacher P, Herpel E, Weitz J, Grabe N, and Jaeger D. Localization and density of immune cells in the invasive margin of human colorectal cancer liver metastases are prognostic for response to chemotherapy. *Cancer Res* 71: 5670–5677, 2011.
53. Hao Q, Du XQ, Fu X, and Tian J. [Expression and clinical significance of HMGB1 and RAGE in cervical squamous cell carcinoma]. *Zhonghua Zhong Liu Za Zhi* 30: 292–295, 2008.
54. Hausler SF, Montalban del Barrio I, Strohschein J, Anoop Chandran P, Engel JB, Honig A, Ossadnik M, Horn E, Fischer B, Krockenberger M, Heuer S, Seida AA, Junker M, Kneitz H, Kloor D, Klotz KN, Dietl J, and Wischhusen J. Ectonucleotidases CD39 and CD73 on OvCA cells are potent adenosine-generating enzymes responsible for adenosine receptor 2A-dependent suppression of T cell function and NK cell cytotoxicity. *Cancer Immunol Immunother* 60: 1405–1418, 2011.
55. Huttunen HJ, Pages C, Kuja-Panula J, Ridley AJ, and Rauvala H. Receptor for advanced glycation end products-binding COOH-terminal motif of amphoterin inhibits invasive migration and metastasis. *Cancer Res* 62: 4805–4811, 2002.
56. Idzko M, Dichmann S, Ferrari D, Di Virgilio F, la Sala A, Girolomoni G, Panther E, and Norgauer J. Nucleotides induce chemotaxis and actin polymerization in immature but not mature human dendritic cells via activation of pertussis toxin-sensitive P2y receptors. *Blood* 100: 925–932, 2002.
57. Ishiguro H, Nakaigawa N, Miyoshi Y, Fujinami K, Kubota Y, and Uemura H. Receptor for advanced glycation end products (RAGE) and its ligand, amphoterin are over-expressed and associated with prostate cancer development. *Prostate* 64: 92–100, 2005.
58. Iyer SS, Pulsikens WP, Sadler JJ, Butter LM, Teske GJ, Ulland TK, Eisenbarth SC, Florquin S, Flavell RA, Leemans JC, and Sutterwala FS. Necrotic cells trigger a sterile inflammatory response through the Nlrp3 inflammasome. *Proc Natl Acad Sci U S A* 106: 20388–20393, 2009.
59. Jacob K, Wach F, Holzapfel U, Hein R, Lengyel E, Buettner R, and Bosserhoff AK. *In vitro* modulation of human melanoma cell invasion and proliferation by all-trans-retinoic acid. *Melanoma Res* 8: 211–219, 1998.
60. Kanneganti TD, Body-Malapel M, Amer A, Park JH, Whitfield J, Franchi L, Taraporewala ZF, Miller D, Patton JT, Inohara N, and Nunez G. Critical role for Cryopyrin/Nalp3 in activation of caspase-1 in response to viral infection and double-stranded RNA. *J Biol Chem* 281: 36560–36568, 2006.
61. Kanneganti TD, Lamkanfi M, and Nunez G. Intracellular NOD-like receptors in host defense and disease. *Immunity* 27: 549–559, 2007.
62. Kobayashi H, Wood M, Song Y, Appella E, and Celis E. Defining promiscuous MHC class II helper T-cell epitopes for the HER2/neu tumor antigen. *Cancer Res* 60: 5228–5236, 2000.
63. Kondo T, Nakazawa T, Murata SI, and Katoh R. Expression of CD73 and its ecto-5'-nucleotidase activity are elevated in papillary thyroid carcinomas. *Histopathology* 48: 612–614, 2006.
64. Kono H and Rock KL. How dying cells alert the immune system to danger. *Nat Rev Immunol* 8: 279–289, 2008.
65. Krause KH and Michalak M. Calreticulin. *Cell* 88: 439–443, 1997.
66. Krelin Y, Voronov E, Dotan S, Elkabets M, Reich E, Fogel M, Huszar M, Iwakura Y, Segal S, Dinarello CA, and Apte RN. Interleukin-1beta-driven inflammation promotes the development and invasiveness of chemical carcinogen-induced tumors. *Cancer Res* 67: 1062–1071, 2007.
67. Kroemer G, Galluzzi L, Vandenabeele P, Abrams J, Alnemri ES, Baehrecke EH, Blagosklonny MV, El-Deiry WS, Golstein P, Green DR, Hengartner M, Knight RA, Kumar S, Lipton SA, Malorni W, Nunez G, Peter ME, Tschopp J, Yuan J, Piacentini M, Zhivotovsky B, and Melino G. Classification of cell death: recommendations of the Nomenclature Committee on Cell Death 2009. *Cell Death Differ* 16: 3–11, 2009.
68. Kroemer G and Zitvogel L. Can the exome and the immunome converge on the design of efficient cancer vaccines? *Oncoimmunology* 1: 579–580, 2012.
69. Krysko DV, Garg AD, Kaczmarek A, Krysko O, Agostinis P, and Vandenabeele P. Immunogenic cell death and DAMPs in cancer therapy. *Nat Rev Cancer* 12: 860–875, 2012.
70. Krysko DV and Vandenabeele P. From regulation of dying cell engulfment to development of anti-cancer therapy. *Cell Death Differ* 15: 29–38, 2008.
71. Kuniyasu H, Chihara Y, Kondo H, Ohmori H, and Ukai R. Amphoterin induction in prostatic stromal cells by androgen deprivation is associated with metastatic prostate cancer. *Oncol Rep* 10: 1863–1868, 2003.

72. Kuniyasu H, Oue N, Wakikawa A, Shigeishi H, Matsutani N, Kuraoka K, Ito R, Yokozaki H, and Yasui W. Expression of receptors for advanced glycation end-products (RAGE) is closely associated with the invasive and metastatic activity of gastric cancer. *J Pathol* 196: 163–170, 2002.
73. Kunzli BM, Bernlochner MI, Rath S, Kaser S, Csizmadia E, Enyoloji K, Cowan P, d'Apice A, Dwyer K, Rosenberg R, Perren A, Friess H, Maurer CA, and Robson SC. Impact of CD39 and purinergic signalling on the growth and metastasis of colorectal cancer. *Purinergic Signal* 7: 231–241, 2011.
74. Ladoire S, Mignot G, Dabakuyo S, Arnould L, Apetoh L, Rebe C, Coudert B, Martin F, Bizollon MH, Vanoli A, Coutant C, Fumoleau P, Bonnetain F, and Ghiringhelli F. *In situ* immune response after neoadjuvant chemotherapy for breast cancer predicts survival. *J Pathol* 224: 389–400, 2011.
75. Leth-Larsen R, Lund R, Hansen HV, Laenkholm AV, Tarin D, Jensen ON, and Ditzel HJ. Metastasis-related plasma membrane proteins of human breast cancer cells identified by comparative quantitative mass spectrometry. *Mol Cell Proteomics* 8: 1436–1449, 2009.
76. Livesey KM, Kang R, Vernon P, Buchser W, Loughran P, Watkins SC, Zhang L, Manfredi JJ, Zeh HJ, 3rd, Li L, Lotze MT, and Tang D. p53/HMGB1 complexes regulate autophagy and apoptosis. *Cancer Res* 72: 1996–2005, 2012.
77. Lotze MT and Tracey KJ. High-mobility group box 1 protein (HMGB1): nuclear weapon in the immune arsenal. *Nat Rev Immunol* 5: 331–342, 2005.
78. Ludwig HC, Rausch S, Schallock K, and Markakis E. Expression of CD 73 (ecto-5'-nucleotidase) in 165 glioblastomas by immunohistochemistry and electronmicroscopic histochemistry. *Anticancer Res* 19: 1747–1752, 1999.
79. Lust JA, Lacy MQ, Zeldenrust SR, Dispenzieri A, Gertz MA, Witzig TE, Kumar S, Hayman SR, Russell SJ, Buadi FK, Geyer SM, Campbell ME, Kyle RA, Rajkumar SV, Greipp PR, Kline MP, Xiong Y, Moon-Tasson LL, and Donovan KA. Induction of a chronic disease state in patients with smoldering or indolent multiple myeloma by targeting interleukin 1{beta}-induced interleukin 6 production and the myeloma proliferative component. *Mayo Clin Proc* 84: 114–122, 2009.
80. Ma Y, Aymeric L, Locher C, Mattarollo SR, Delahaye NF, Pereira P, Boucontet L, Apetoh L, Ghiringhelli F, Casares N, Lasarte JJ, Matsuzaki G, Ikuta K, Ryffel B, Benlagha K, Tesniere A, Ibrahim N, Dechanet-Merville J, Chaput N, Smyth MJ, Kroemer G, and Zitvogel L. Contribution of IL-17-producing gamma delta T cells to the efficacy of anti-cancer chemotherapy. *J Exp Med* 208: 491–503, 2011.
81. Manfredi AA, Capobianco A, Esposito A, De Cobelli F, Canu T, Monno A, Raucci A, Sanvito F, Doglioni C, Nawroth PP, Bierhaus A, Bianchi ME, Rovere-Querini P, and Del Maschio A. Maturing dendritic cells depend on RAGE for *in vivo* homing to lymph nodes. *J Immunol* 180: 2270–2275, 2008.
82. Mariathasan S, Weiss DS, Newton K, McBride J, O'Rourke K, Roose-Girma M, Lee WP, Weinrauch Y, Monack DM, and Dixit VM. Cryopyrin activates the inflammasome in response to toxins and ATP. *Nature* 440: 228–232, 2006.
83. Marshak-Rothstein A. Toll-like receptors in systemic autoimmune disease. *Nat Rev Immunol* 6: 823–835, 2006.
84. Martinon F, Chen X, Lee AH, and Glimcher LH. TLR activation of the transcription factor XBP1 regulates innate immune responses in macrophages. *Nat Immunol* 11: 411–418, 2010.
85. Martinon F, Mayor A, and Tschopp J. The inflammasomes: guardians of the body. *Annu Rev Immunol* 27: 229–265, 2009.
86. Martins I, Kepp O, Schlemmer F, Adjemian S, Tailler M, Shen S, Michaud M, Menger L, Gdoura A, Tajeddine N, Tesniere A, Zitvogel L, and Kroemer G. Restoration of the immunogenicity of cisplatin-induced cancer cell death by endoplasmic reticulum stress. *Oncogene* 30: 1147–1158, 2011.
87. Martins I, Tesniere A, Kepp O, Michaud M, Schlemmer F, Senovilla L, Seror C, Metivier D, Perfettini JL, Zitvogel L, and Kroemer G. Chemotherapy induces ATP release from tumor cells. *Cell Cycle* 8: 3723–3728, 2009.
88. Mattarollo SR, Loi S, Duret H, Ma Y, Zitvogel L, and Smyth MJ. Pivotal role of innate and adaptive immunity in anthracycline chemotherapy of established tumors. *Cancer Res* 71: 4809–4820, 2011.
89. Matzinger P. The danger model: a renewed sense of self. *Science* 296: 301–305, 2002.
90. Matzinger P. Tolerance, danger, and the extended family. *Annu Rev Immunol* 12: 991–1045, 1994.
91. Medzhitov R. Toll-like receptors and innate immunity. *Nat Rev Immunol* 1: 135–145, 2001.
92. Melvin VS, Harrell C, Adelman JS, Kraus WL, Churchill M, and Edwards DP. The role of the C-terminal extension (CTE) of the estrogen receptor alpha and beta DNA binding domain in DNA binding and interaction with HMGB. *J Biol Chem* 279: 14763–14771, 2004.
93. Menger L, Vacchelli E, Adjemian S, Martins I, Ma Y, Shen S, Yamazaki T, Sukkurwala AQ, Michaud M, Mignot G, Schlemmer F, Sulpice E, Locher C, Gidrol X, Ghiringhelli F, Modjtahedi N, Galluzzi L, Andre F, Zitvogel L, Kepp O, and Kroemer G. Cardiac glycosides exert anticancer effects by inducing immunogenic cell death. *Sci Transl Med* 4: 143ra99, 2012.
94. Messmer D, Yang H, Telusma G, Knoll F, Li J, Messmer B, Tracey KJ, and Chiorazzi N. High mobility group box protein 1: an endogenous signal for dendritic cell maturation and Th1 polarization. *J Immunol* 173: 307–313, 2004.
95. Michaud M, Martins I, Sukkurwala AQ, Adjemian S, Ma Y, Pellegatti P, Shen S, Kepp O, Scoazec M, Mignot G, Rello-Varona S, Tailler M, Menger L, Vacchelli E, Galluzzi L, Ghiringhelli F, di Virgilio F, Zitvogel L, and Kroemer G. Autophagy-dependent anticancer immune responses induced by chemotherapeutic agents in mice. *Science* 334: 1573–1577, 2011.
96. Mitola S, Belleri M, Urbinati C, Coltrini D, Sparatore B, Pedrazzi M, Melloni E, and Presta M. Cutting edge: extracellular high mobility group box-1 protein is a proangiogenic cytokine. *J Immunol* 176: 12–15, 2006.
97. Moser B, Desai DD, Downie MP, Chen Y, Yan SF, Herold K, Schmidt AM, and Clynes R. Receptor for advanced glycation end products expression on T cells contributes to antigen-specific cellular expansion *in vivo*. *J Immunol* 179: 8051–8058, 2007.
98. Muller S, Scaffidi P, Degryse B, Bonaldi T, Ronfani L, Agresti A, Beltrame M, and Bianchi ME. New EMBO members' review: the double life of HMGB1 chromatin protein: architectural factor and extracellular signal. *EMBO J* 20: 4337–4340, 2001.
99. Nakao S, Kuwano T, Tsutsumi-Miyahara C, Ueda S, Kimura YN, Hamano S, Sonoda KH, Saijo Y, Nukiwa T, Strieter RM, Ishibashi T, Kuwano M, and Ono M. Infiltration of COX-2-expressing macrophages is a prerequisite for

- IL-1 beta-induced neovascularization and tumor growth. *J Clin Invest* 115: 2979–2991, 2005.
100. Nestl A, Von Stein OD, Zatloukal K, Thies WG, Herrlich P, Hofmann M, and Sleeman JP. Gene expression patterns associated with the metastatic phenotype in rodent and human tumors. *Cancer Res* 61: 1569–1577, 2001.
 101. Obeid M, Panaretakis T, Joza N, Tufi R, Tesniere A, van Endert P, Zitvogel L, and Kroemer G. Calreticulin exposure is required for the immunogenicity of gamma-irradiation and UVC light-induced apoptosis. *Cell Death Differ* 14: 1848–1850, 2007.
 102. Obeid M, Tesniere A, Ghiringhelli F, Fimia GM, Apetoh L, Perfettini JL, Castedo M, Mignot G, Panaretakis T, Casares N, Metivier D, Larochette N, van Endert P, Ciccocanti F, Piacentini M, Zitvogel L, and Kroemer G. Calreticulin exposure dictates the immunogenicity of cancer cell death. *Nat Med* 13: 54–61, 2007.
 103. Ogura Y, Sutterwala FS, and Flavell RA. The inflammasome: first line of the immune response to cell stress. *Cell* 126: 659–662, 2006.
 104. Oh HK, Sin JI, Choi J, Park SH, Lee TS, and Choi YS. Overexpression of CD73 in epithelial ovarian carcinoma is associated with better prognosis, lower stage, better differentiation and lower regulatory T cell infiltration. *J Gynecol Oncol* 23: 274–281, 2012.
 105. Okamoto M, Liu W, Luo Y, Tanaka A, Cai X, Norris DA, Dinarello CA, and Fujita M. Constitutively active inflammasome in human melanoma cells mediating autoinflammation via caspase-1 processing and secretion of interleukin-1beta. *J Biol Chem* 285: 6477–6488, 2010.
 106. Oppenheim JJ and Yang D. Alarmins: chemotactic activators of immune responses. *Curr Opin Immunol* 17: 359–365, 2005.
 107. Pages F, Galon J, Dieu-Nosjean MC, Tartour E, Sautes-Fridman C, and Fridman WH. Immune infiltration in human tumors: a prognostic factor that should not be ignored. *Oncogene* 29: 1093–1102, 2010.
 108. Palumbo R, Galvez BG, Pusterla T, De Marchis F, Cossu G, Marcu KB, and Bianchi ME. Cells migrating to sites of tissue damage in response to the danger signal HMGB1 require NF-kappaB activation. *J Cell Biol* 179: 33–40, 2007.
 109. Panaretakis T, Joza N, Modjtahedi N, Tesniere A, Vitale I, Durchschlag M, Fimia GM, Kepp O, Piacentini M, Froehlich KU, van Endert P, Zitvogel L, Madeo F, and Kroemer G. The co-translocation of ERp57 and calreticulin determines the immunogenicity of cell death. *Cell Death Differ* 15: 1499–1509, 2008.
 110. Panaretakis T, Kepp O, Brockmeier U, Tesniere A, Bjorklund AC, Chapman DC, Durchschlag M, Joza N, Pierron G, van Endert P, Yuan J, Zitvogel L, Madeo F, Williams DB, and Kroemer G. Mechanisms of pre-apoptotic calreticulin exposure in immunogenic cell death. *EMBO J* 28: 578–590, 2009.
 111. Park JS, Arcaroli J, Yum HK, Yang H, Wang H, Yang KY, Choe KH, Strassheim D, Pitts TM, Tracey KJ, and Abraham E. Activation of gene expression in human neutrophils by high mobility group box 1 protein. *Am J Physiol Cell Physiol* 284: C870–C879, 2003.
 112. Park JS, Gamboni-Robertson F, He Q, Svetkauskaite D, Kim JY, Strassheim D, Sohn JW, Yamada S, Maruyama I, Banerjee A, Ishizaka A, and Abraham E. High mobility group box 1 protein interacts with multiple Toll-like receptors. *Am J Physiol Cell Physiol* 290: C917–C924, 2006.
 113. Park S, Jiang Z, Mortenson ED, Deng L, Radkevich-Brown O, Yang X, Sattar H, Wang Y, Brown NK, Greene M, Liu Y, Tang J, Wang S, and Fu YX. The therapeutic effect of anti-HER2/neu antibody depends on both innate and adaptive immunity. *Cancer Cell* 18: 160–170, 2010.
 114. Parkkinen J, Raulo E, Merenmies J, Nolo R, Kajander EO, Baumann M, and Rauvala H. Amphoterin, the 30-kDa protein in a family of HMG1-type polypeptides. Enhanced expression in transformed cells, leading edge localization, and interactions with plasminogen activation. *J Biol Chem* 268: 19726–19738, 1993.
 115. Parkkinen J and Rauvala H. Interactions of plasminogen and tissue plasminogen activator (t-PA) with amphoterin. Enhancement of t-PA-catalyzed plasminogen activation by amphoterin. *J Biol Chem* 266: 16730–16735, 1991.
 116. Poser I and Bosserhoff AK. Transcription factors involved in development and progression of malignant melanoma. *Histol Histopathol* 19: 173–188, 2004.
 117. Poser I, Golob M, Buettner R, and Bosserhoff AK. Upregulation of HMG1 leads to melanoma inhibitory activity expression in malignant melanoma cells and contributes to their malignancy phenotype. *Mol Cell Biol* 23: 2991–2998, 2003.
 118. Pulte D, Furman RR, Broekman MJ, Drosopoulos JH, Ballard HS, Olson KE, Kizer JR, and Marcus AJ. CD39 expression on T lymphocytes correlates with severity of disease in patients with chronic lymphocytic leukemia. *Clin Lymphoma Myeloma Leuk* 11: 367–372, 2011.
 119. Qin Y, Ekmekcioglu S, Liu P, Duncan LM, Lizee G, Poin-dexter N, and Grimm EA. Constitutive aberrant endogenous interleukin-1 facilitates inflammation and growth in human melanoma. *Mol Cancer Res* 9: 1537–1550, 2011.
 120. Rao RV, Ellerby HM, and Bredesen DE. Coupling endoplasmic reticulum stress to the cell death program. *Cell Death Differ* 11: 372–380, 2004.
 121. Rauvala H, Huttunen HJ, Fages C, Kaksonen M, Kinnunen T, Imai S, Raulo E, and Kilpelainen I. Heparin-binding proteins HB-GAM (pleiotrophin) and amphoterin in the regulation of cell motility. *Matrix Biol* 19: 377–387, 2000.
 122. Ray-Coquard I, Cropet C, Van Glabbeke M, Sebban C, Le Cesne A, Judson I, Tredan O, Verweij J, Biron P, Labidi I, Guastalla JP, Bachelot T, Perol D, Chabaud S, Hogendoorn PC, Cassier P, Dufresne A, and Blay JY. Lymphopenia as a prognostic factor for overall survival in advanced carcinomas, sarcomas, and lymphomas. *Cancer Res* 69: 5383–5391, 2009.
 123. Reed JR, Leon RP, Hall MK, and Schwertfeger KL. Interleukin-1beta and fibroblast growth factor receptor 1 cooperate to induce cyclooxygenase-2 during early mammary tumorigenesis. *Breast Cancer Res* 11: R21, 2009.
 124. Ronchetti A, Rovere P, Iezzi G, Galati G, Heltai S, Protti MP, Garancini MP, Manfredi AA, Rugarli C, and Bellone M. Immunogenicity of apoptotic cells *in vivo*: role of antigen load, antigen-presenting cells, and cytokines. *J Immunol* 163: 130–136, 1999.
 125. Rovere-Querini P, Capobianco A, Scaffidi P, Valentinis B, Catalanotti F, Giazzone M, Dumitriu IE, Muller S, Iannaccone M, Traversari C, Bianchi ME, and Manfredi AA. HMGB1 is an endogenous immune adjuvant released by necrotic cells. *EMBO Rep* 5: 825–830, 2004.
 126. Rovere P, Vallinoto C, Bondanza A, Crosti MC, Rescigno M, Ricciardi-Castagnoli P, Rugarli C, and Manfredi AA. By-stander apoptosis triggers dendritic cell maturation and antigen-presenting function. *J Immunol* 161: 4467–4471, 1998.
 127. Ruffell B, Au A, Rugo HS, Esserman LJ, Hwang ES, and Coussens LM. Leukocyte composition of human breast cancer. *Proc Natl Acad Sci U S A* 109: 2796–2801, 2012.

128. Sancho D, Joffre OP, Keller AM, Rogers NC, Martinez D, Hernanz-Falcon P, Rosewell I, and Reis e Sousa C. Identification of a dendritic cell receptor that couples sensing of necrosis to immunity. *Nature* 458: 899–903, 2009.
129. Sancho D, Mourao-Sa D, Joffre OP, Schulz O, Rogers NC, Pennington DJ, Carlyle JR, and Reis e Sousa C. Tumor therapy in mice via antigen targeting to a novel, DC-restricted C-type lectin. *J Clin Invest* 118: 2098–2110, 2008.
130. Sasahira T, Akama Y, Fujii K, and Kuniyasu H. Expression of receptor for advanced glycation end products and HMGB1/amphoterin in colorectal adenomas. *Virchows Arch* 446: 411–415, 2005.
131. Savill J and Fadok V. Corpse clearance defines the meaning of cell death. *Nature* 407: 784–788, 2000.
132. Scaffidi P, Misteli T, and Bianchi ME. Release of chromatin protein HMGB1 by necrotic cells triggers inflammation. *Nature* 418: 191–195, 2002.
133. Schafer M and Werner S. Cancer as an overheating wound: an old hypothesis revisited. *Nat Rev Mol Cell Biol* 9: 628–638, 2008.
134. Schauer IG, Sood AK, Mok S, and Liu J. Cancer-associated fibroblasts and their putative role in potentiating the initiation and development of epithelial ovarian cancer. *Neoplasia* 13: 393–405, 2011.
135. Scherbarth S and Orr FW. Intravital videomicroscopic evidence for regulation of metastasis by the hepatic microvasculature: effects of interleukin-1 α on metastasis and the location of B16F1 melanoma cell arrest. *Cancer Res* 57: 4105–4110, 1997.
136. Schlueter C, Weber H, Meyer B, Rogalla P, Roser K, Hauke S, and Bullerdiek J. Angiogenetic signaling through hypoxia: HMGB1: an angiogenetic switch molecule. *Am J Pathol* 166: 1259–1263, 2005.
137. Schonthal AH. Pharmacological targeting of endoplasmic reticulum stress signaling in cancer. *Biochem Pharmacol* 85: 653–666, 2013.
138. Schroder K and Tschopp J. The inflammasomes. *Cell* 140: 821–832, 2010.
139. Semino C, Angelini G, Poggi A, and Rubartelli A. NK/iDC interaction results in IL-18 secretion by DCs at the synaptic cleft followed by NK cell activation and release of the DC maturation factor HMGB1. *Blood* 106: 609–616, 2005.
140. Serra S, Horenstein AL, Vaisitti T, Brusa D, Rossi D, Laurenti L, D'Arena G, Coscia M, Tripodo C, Inghirami G, Robson SC, Gaidano G, Malavasi F, and Deaglio S. CD73-generated extracellular adenosine in chronic lymphocytic leukemia creates local conditions counteracting drug-induced cell death. *Blood* 118: 6141–6152, 2011.
141. Shiratsuchi A, Watanabe I, Takeuchi O, Akira S, and Nakanishi Y. Inhibitory effect of Toll-like receptor 4 on fusion between phagosomes and endosomes/lysosomes in macrophages. *J Immunol* 172: 2039–2047, 2004.
142. Stagg J, Divisekera U, Duret H, Sparwasser T, Teng MW, Darcy PK, and Smyth MJ. CD73-deficient mice have increased antitumor immunity and are resistant to experimental metastasis. *Cancer Res* 71: 2892–2900, 2011.
143. Stros M, Ozaki T, Bacikova A, Kageyama H, and Nakagawara A. HMGB1 and HMGB2 cell-specifically down-regulate the p53- and p73-dependent sequence-specific transactivation from the human Bax gene promoter. *J Biol Chem* 277: 7157–7164, 2002.
144. Takada M, Hirata K, Ajiki T, Suzuki Y, and Kuroda Y. Expression of receptor for advanced glycation end products (RAGE) and MMP-9 in human pancreatic cancer cells. *Hepatogastroenterology* 51: 928–930, 2004.
145. Takeda K, Kaisho T, and Akira S. Toll-like receptors. *Annu Rev Immunol* 21: 335–376, 2003.
146. Terme M, Ullrich E, Aymeric L, Meinhardt K, Desbois M, Delahaye N, Viaud S, Ryffel B, Yagita H, Kaplanski G, Prevost-Blondel A, Kato M, Schultze JL, Tartour E, Kroemer G, Chaput N, and Zitvogel L. IL-18 induces PD-1-dependent immunosuppression in cancer. *Cancer Res* 71: 5393–5399, 2011.
147. Tesniere A, Schlemmer F, Boige V, Kepp O, Martins I, Ghiringhelli F, Aymeric L, Michaud M, Apetoh L, Barault L, Mendiboure J, Pignon JP, Jooste V, van Endert P, Duceux M, Zitvogel L, Piard F, and Kroemer G. Immunogenic death of colon cancer cells treated with oxaliplatin. *Oncogene* 29: 482–491, 2010.
148. Tian J, Avalos AM, Mao SY, Chen B, Senthil K, Wu H, Parroche P, Drabic S, Golenbock D, Sirois C, Hua J, An LL, Audoly L, La Rosa G, Bierhaus A, Naworth P, Marshak-Rothstein A, Crow MK, Fitzgerald KA, Latz E, Kiener PA, and Coyle AJ. Toll-like receptor 9-dependent activation by DNA-containing immune complexes is mediated by HMGB1 and RAGE. *Nat Immunol* 8: 487–496, 2007.
149. Topalian SL, Hodi FS, Brahmer JR, Gettinger SN, Smith DC, McDermott DF, Powderly JD, Carvajal RD, Sosman JA, Atkins MB, Leming PD, Spigel DR, Antonia SJ, Horn L, Drake CG, Pardoll DM, Chen L, Sharfman WH, Anders RA, Taube JM, McMiller TL, Xu H, Korman AJ, Jure-Kunkel M, Agrawal S, McDonald D, Kollia GD, Gupta A, Wigginton JM, and Szoln M. Safety, activity, and immune correlates of anti-PD-1 antibody in cancer. *N Engl J Med* 366: 2443–2454, 2012.
150. Tu S, Bhagat G, Cui G, Takaishi S, Kurt-Jones EA, Rickman B, Betz KS, Penz-Oesterreicher M, Bjorkdahl O, Fox JG, and Wang TC. Overexpression of interleukin-1 β induces gastric inflammation and cancer and mobilizes myeloid-derived suppressor cells in mice. *Cancer Cell* 14: 408–419, 2008.
151. Ullrich E, Bonmort M, Mignot G, Kroemer G, and Zitvogel L. Tumor stress, cell death and the ensuing immune response. *Cell Death Differ* 15: 21–28, 2008.
152. van Deventer HW, Burgents JE, Wu QP, Woodford RM, Brickey WJ, Allen IC, McElvania-Tekippe E, Serody JS, and Ting JP. The inflammasome component NLRP3 impairs antitumor vaccine by enhancing the accumulation of tumor-associated myeloid-derived suppressor cells. *Cancer Res* 70: 10161–10169, 2011.
153. Veerman AJ, Hogeman PH, van Zantwijk CH, and Beumer PD. Prognostic value of 5' nucleotidase in acute lymphoblastic leukemia with the common-ALL phenotype. *Leuk Res* 9: 1227–1229, 1985.
154. Venereau E, Casalgrandi M, Schiraldi M, Antoine DJ, Cattaneo A, De Marchis F, Liu J, Antonelli A, Preti A, Raeli L, Shams SS, Yang H, Varani L, Andersson U, Tracey KJ, Bachi A, Ugucioni M, and Bianchi ME. Mutually exclusive redox forms of HMGB1 promote cell recruitment or proinflammatory cytokine release. *J Exp Med* 209: 1519–1528, 2012.
155. Venneri MA, De Palma M, Ponzoni M, Pucci F, Scielzo C, Zonari E, Mazzieri R, Doglioni C, and Naldini L. Identification of proangiogenic TIE2-expressing monocytes (TEMs) in human peripheral blood and cancer. *Blood* 109: 5276–5285, 2007.
156. Vidal-Vanaclocha F, Fantuzzi G, Mendoza L, Fuentes AM, Anasagasti MJ, Martin J, Carrascal T, Walsh P, Reznikov

- LL, Kim SH, Novick D, Rubinstein M, and Dinarello CA. IL-18 regulates IL-1 β -dependent hepatic melanoma metastasis via vascular cell adhesion molecule-1. *Proc Natl Acad Sci U S A* 97: 734–739, 2000.
157. Volp K, Brezniceanu ML, Bossier S, Brabletz T, Kirchner T, Gottel D, Joos S, and Zornig M. Increased expression of high mobility group box 1 (HMGB1) is associated with an elevated level of the antiapoptotic c-IAP2 protein in human colon carcinomas. *Gut* 55: 234–242, 2006.
158. Wang H, Bloom O, Zhang M, Vishnubhakat JM, Ombrellino M, Che J, Frazier A, Yang H, Ivanova S, Borovikova L, Manogue KR, Faist E, Abraham E, Andersson J, Andersson U, Molina PE, Abumrad NN, Sama A, and Tracey KJ. HMG-1 as a late mediator of endotoxin lethality in mice. *Science* 285: 248–251, 1999.
159. Wang S, Astsaturou IA, Bingham CA, McCarthy KM, von Mehren M, Xu W, Alpaugh RK, Tang Y, Littlefield BA, Hawkins LD, Ishizaka ST, and Weiner LM. Effective antibody therapy induces host-protective antitumor immunity that is augmented by TLR4 agonist treatment. *Cancer Immunol Immunother* 61: 49–61, 2012.
160. Weinreich DM, Elaraj DM, Puhlmann M, Hewitt SM, Carroll NM, Feldman ED, Turner EM, Spiess PJ, and Alexander HR. Effect of interleukin 1 receptor antagonist gene transduction on human melanoma xenografts in nude mice. *Cancer Res* 63: 5957–5961, 2003.
161. West NR, Milne K, Truong PT, Macpherson N, Nelson BH, and Watson PH. Tumor-infiltrating lymphocytes predict response to anthracycline-based chemotherapy in estrogen receptor-negative breast cancer. *Breast Cancer Res* 13: R126, 2011.
162. Wieten E, van der Linden-Schreuer BE, Sonneveld E, Veerman AJ, and Pieters R. CD73 (5'-nucleotidase) expression has no prognostic value in children with acute lymphoblastic leukemia. *Leukemia* 25: 1374–1376, 2011.
163. Wu XR, He XS, Chen YF, Yuan RX, Zeng Y, Lian L, Zou YF, Lan N, Wu XJ, and Lan P. High expression of CD73 as a poor prognostic biomarker in human colorectal cancer. *J Surg Oncol* 106: 130–137, 2012.
164. Yousif NG and Al-Amran FG. Novel Toll-like receptor-4 deficiency attenuates trastuzumab (Herceptin) induced cardiac injury in mice. *BMC Cardiovasc Disord* 11: 62, 2011.
165. Yu W, Kim J, and Ossowski L. Reduction in surface urokinase receptor forces malignant cells into a protracted state of dormancy. *J Cell Biol* 137: 767–777, 1997.
166. Zappasodi R, Pupa SM, Ghedini GC, Bongarzone I, Magni M, Cabras AD, Colombo MP, Carlo-Stella C, Gianni AM, and Di Nicola M. Improved clinical outcome in indolent B-cell lymphoma patients vaccinated with autologous tumor cells experiencing immunogenic death. *Cancer Res* 70: 9062–9072, 2010.
167. Zitvogel L, Apetoh L, Ghiringhelli F, Andre F, Tesniere A, and Kroemer G. The anticancer immune response: indispensable for therapeutic success? *J Clin Invest* 118: 1991–2001, 2008.
168. Zitvogel L, Apetoh L, Ghiringhelli F, and Kroemer G. Immunological aspects of cancer chemotherapy. *Nat Rev Immunol* 8: 59–73, 2008.
169. Zitvogel L, Kepp O, Galluzzi L, and Kroemer G. Inflammasomes in carcinogenesis and anticancer immune responses. *Nat Immunol* 13: 343–351, 2012.
170. Zitvogel L, Kepp O, and Kroemer G. Decoding cell death signals in inflammation and immunity. *Cell* 140: 798–804, 2010.
171. Zou W. Regulatory T cells, tumour immunity and immunotherapy. *Nat Rev Immunol* 6: 295–307, 2006.

Address correspondence to:

Prof. Laurence Zitvogel
U1015 INSERM
Institut Gustave Roussy
114 rue Edouard Vaillant
Villejuif F-94805
France

E-mail: zitvogel@igr.fr

Prof. Guido Kroemer
Institut de Cancérologie Gustave Roussy
Villejuif F-94805
France

E-mail: kroemer@orange.fr

Date of first submission to ARS Central, January 30, 2013; date of acceptance, February 7, 2013.

Abbreviations Used

AIM2 = absent in melanoma 2
 ALL = acute lymphoblastic leukemia
 ASC = apoptosis-associated speck like protein
 ATP = adenosine tri-phosphate
 BC = breast cancer
 CDAMP = cell-death associated molecular patterns
 CLEC9A = C-type lectin domain family 9, member A
 CLL = chronic lymphoblastic leukemia
 CR = complete response
 CRC = colo-rectal cancer
 CRT = calreticuline
 CTL = cytotoxic T lymphocyte
 CTLA4 = cytotoxic T-lymphocyte antigen 4
 DAMPs = danger-associated molecular patterns
 DC = dendritic cell
 eIF2 α = eukaryotic initiation factor 2 α
 ENTPD1 = ectonucleoside triphosphate diphosphohydrolase
 EOC = epithelial ovarian carcinoma
 ER = endoplasmic reticulum
 GBM = glioblastoma
 HMGB1 = high mobility group box 1 protein
 HSP = heat shock protein
 ICD = immunogenic cell death
 IFNRII = interferon gamma receptor chain 2
 IFN- γ = interferon- γ
 IHC = immunohistochemistry
 IL-17 = interleukin-17
 IL-17RA = interleukin-17 receptor A
 IL-1R1 = IL-1 receptor 1
 IL-1 β = interleukin-1 β
 LPS = lipopolysaccharide
 MHC = major histocompatibility complex
 MyD88 = myeloid differentiation primary response gene (88)
 NK = natural killer
 NLR = NOD-like receptor

Abbreviations Used (Cont.)

NLRC4 = NLR family, CARD domain containing 4
NLRP1, NLRP3, NLRP6 = NLR family, pyrin domain
containing 1, 3, 6
OS = overall survival
P₂RX₇ = purinergic receptor P2_x, ligand-gated ion
channel, 7
PAMPs = pathogen-associated molecular patterns
PARP = polyadenosylribosyl polymerase
PERK = phospho extracellular-signal-regulated kinase

PI3K = phosphoinositide 3 kinase
PTC = papillary thyroid carcinoma
RAGE = receptor for advanced glycation end products
ROS = reactive oxygen species
Tc1 = cytotoxic-T lymphocytes
Th1 = T helper type 1 lymphocyte
Th2 = T helper type 2 lymphocyte
TIM3 = T cell immunoglobulin mucin-3
TLR = Toll-like receptor
WT = wild-type