



**HAL**  
open science

## Lateglacial/Holocene environmental changes in the Mediterranean Alps inferred from lacustrine sediments

Elodie Brisset, Frédéric Guiter, Cécile Miramont, Marie Revel, Edward J. Anthony, Claire Delhon, Fabien Arnaud, Emmanuel Malet, Jacques-Louis de Beaulieu

### ► To cite this version:

Elodie Brisset, Frédéric Guiter, Cécile Miramont, Marie Revel, Edward J. Anthony, et al.. Lateglacial/Holocene environmental changes in the Mediterranean Alps inferred from lacustrine sediments. *Quaternary Science Reviews*, 2015, 110, pp.49-71. 10.1016/j.quascirev.2014.12.004 . hal-02046338

**HAL Id: hal-02046338**

**<https://hal.science/hal-02046338v1>**

Submitted on 28 Apr 2020

**HAL** is a multi-disciplinary open access archive for the deposit and dissemination of scientific research documents, whether they are published or not. The documents may come from teaching and research institutions in France or abroad, or from public or private research centers.

L'archive ouverte pluridisciplinaire **HAL**, est destinée au dépôt et à la diffusion de documents scientifiques de niveau recherche, publiés ou non, émanant des établissements d'enseignement et de recherche français ou étrangers, des laboratoires publics ou privés.

# Lateglacial/Holocene environmental changes in the Mediterranean Alps inferred from lacustrine sediments

Elodie Brisset <sup>a, b, c, \*</sup>, Frédéric Guiter <sup>b, c</sup>, Cécile Miramont <sup>b, c</sup>, Marie Revel <sup>d</sup>, Edward J. Anthony <sup>a, e</sup>, Claire Delhon <sup>f</sup>, Fabien Arnaud <sup>g</sup>, Emmanuel Malet <sup>g</sup>, Jacques-Louis de Beaulieu <sup>b</sup>

<sup>a</sup> Aix-Marseille Université, CNRS, IRD, Collège de France, UM 34 CEREGE, Europôle Méditerranéen de l'Arbois, BP 80, 13545 Aix-en-Provence Cedex 4, France

<sup>b</sup> Aix-Marseille Université, CNRS, UMR 7263 IMBE, Europôle Méditerranéen de l'Arbois, BP 80, 13545 Aix-en-Provence Cedex 4, France

<sup>c</sup> ECCOREV Research Federation, Europôle Méditerranéen de l'Arbois, BP 80, 13545 Aix-en-Provence Cedex 4, France

<sup>d</sup> Université Nice Sophia Antipolis, CNRS, UMR 7329 GEOAZUR, 250 rue A. Einstein, 06560 Valbonne-Sophia Antipolis, France

<sup>e</sup> Institut Universitaire de France, France

<sup>f</sup> Université Nice Sophia Antipolis, CNRS, UMR 7264 CEPAM, Campus Saint-Jean-d'Angély, SJA3, 24 Avenue des Diables Bleus, 06357 Nice Cedex 4, France

<sup>g</sup> Université de Savoie, CNRS, UMR 5204 EDYTEM, Pôle Montagne Campus scientifique, 73376 le-Bourget-du-Lac Cedex, France

## A B S T R A C T

This study investigates sediment cores from the Mediterranean alpine lakes located in upvalley cirques upper than 1700 metres a.s.l. using sedimentological, palynological and geomorphological studies, in order to document environmental changes following the last phase of glacier retreat. These results are considered in the framework of the deglaciation characterized from 16 sediment cores from high-altitude lakes and mires including 104 <sup>14</sup>C ages and geomorphological studies of the Mediterranean Alps. Considering each sediment core proxy as an independent observation, i.e., comparisons between <sup>14</sup>C ages and palynostratigraphy, between <sup>14</sup>C ages and lithostratigraphy, between palynostratigraphy and lithostratigraphy, these data are aimed at contributing to a better understanding of the timing of postglacial environmental changes. The <sup>14</sup>C ages combined with pollen biostratigraphy indicate that the deglaciation of cirque catchments is dated between 14,500 and 13,000 cal. BP, i.e., during the Lateglacial Interstadial (Greenland Interstadial-1e). The sixteen lacustrine and mire sediment records are systematically characterized by three units from bottom to top: organic-poor blue clay, beige to light-brown silty clay and organic rich dark brown gyttja lithotype. During the Younger Dryas, lakes located below 2300 m a.s.l. were ice-free and their pollen record indicates steppe conditions. The sedimentary facies also informs on the timing of glacial-dominated processes. The onset of organic-rich gyttja is dated at 11,000 cal. BP suggesting the last influence of cirque glaciers in these lakes at the beginning of the Holocene. The timing of the onset of this organic rich unit differs in sites ( $\pm 2000$  years) probably due to an altitudinal and exposure gradient of the glacial cirques. The presence of gyttja from 11,000 cal. BP to Present indicates biogenic infilling lake for all the Holocene. Even though the literature have indicated rock glacier advances occurred during the Holocene (Subboreal and LIA) in the south of the Alps, no significant sedimentological patterns related to glacier fluctuations are recorded in Lake Vens. The glacier fluctuations in the Mediterranean Alps are concomitant with those dated in the non-Mediterranean Alps, thus suggesting a main common climate forcing. However, the increase in terrigenous sediment inputs since 1800 cal. BP is mainly due to human activities.

### Keywords:

Cirque glaciers

Lateglacial

Pollen biostratigraphy

Holocene climatic optimum

Mediterranean Alps

Lake sediment

<sup>14</sup>C ages

## 1. Introduction

Significant advances have been made over the last few decades in understanding the chronology of alpine glacier retreat and associated Holocene palaeoenvironmental changes. The transition between the Last Glacial Maximum (LGM) and the Holocene is a

\* Corresponding author. Aix-Marseille Université, IMBE, Europôle Méditerranéen de l'Arbois, BP 80, 13545 Aix-en-Provence Cedex 4, France.

E-mail address: [elodie.brisset@gmail.com](mailto:elodie.brisset@gmail.com) (E. Brisset).

key time interval that provides contrasting boundary conditions for terrestrial ecosystems response with episodes of insolation changes and ice melting. At the end of the Pleistocene and consecutively to alpine glacier retreat, new ecosystems (soil, vegetation, and fauna) developed on freshly ice-free valleys; profoundly modifying mountain landscapes (e.g., Tinner et al., 1996; Heiri et al., 2003; Lotter and Birks, 2003). However, the timing of these changes (e.g., synchronism, delay) is poorly known, notwithstanding the fact that they are crucial to a better understanding of thresholds in the Earth's climatic system (Alley et al., 2003). This is especially true in the southernmost part of the Alpine range, especially the Mediterranean Alps, since there is a lack of *in situ* landform dating and a dispersed corpus of lake sediment studies. The Mediterranean Alps are a privileged environment for investigating landscape and climate change since the Postglacial because: (1) strong altitude (several summits attain 3000 m a.s.l.), climate and ecotone gradients amplify responses to climate change and, (2) the proximity of the Mediterranean Sea (less than 30 km) provides a good context for studying the effects of European and Mediterranean climatic influences.

In this context, lake sediment sequences have been studied to constrain the trends and the timing of glacier retreat and the subsequent Deglacial and Holocene. Since the pioneer studies of de Beaulieu (1977), very few sediment cores from the Mediterranean Alps concerning the last 20,000 years (Lotter and Birks, 2003) have been studied. Most of the well-preserved long-term archives are high-altitude lakes and mires sediments in inherited glacial cirques located behind glacial steps. Most studies of postglacial sediments in the Mediterranean Alps combine three independent analyses: (1) sedimentological descriptions, (2) palynological analysis and (3) radiocarbon dating, providing a biostratigraphical framework used to constrain periods of cirque glacier activity. Due to the lack of terrestrial macroremains in these high-elevation environments, one of the main issues is dating the early stages of deglaciation: inconsistencies in some radiocarbon age sets require a re-evaluation of the radiocarbon framework (Pallas et al., 2006). Palynology is a powerful tool for Quaternary chronostratigraphy. The richness of palynological studies in the Alps provides a well-documented and well-constrained biostratigraphical framework based on plant taxa expression into pollen diagrams and vegetation changes (Van der Knaap et al., 2005). Thus, the palynostratigraphical framework can support radiocarbon dating of glacial features and of lacustrine sediments to reconstruct the chronological framework of postglacial environmental changes over the Mediterranean Alps.

In this study, we use a multi-proxy approach involving sedimentological and palynological analysis, as well as  $^{14}\text{C}$  dating, to document environmental changes starting from the early phases of lake development and infilling through to glacier retreat from the Lateglacial to the Holocene period. We first conduct a synthesis of 15 published and unpublished studies of high-altitude lake and mire sediment records, and then follow up with the sedimentological and palynological analysis of a sediment record of Lake Vens (2330 m a.s.l.) located in the French Maritime Alps. On the basis of comparisons between: (1)  $^{14}\text{C}$  ages and palynostratigraphy, (2)  $^{14}\text{C}$  ages and lithostratigraphy, and (3) palynostratigraphy and lithostratigraphy, these new results throw further light on existing climatic datasets of this region. These three approaches provide interesting perspectives to investigate postglacial environmental changes in the region. The aims are: (1) to review the glacial and deglacial geomorphological evolution in the Mediterranean Alps, (2) to reconstruct phases of the palaeoenvironmental variability at Lake Vens and to establish a chronology for the sediment core using a combination of radiocarbon ages and palynostratigraphy and (3) to interpret these new results in the framework of the deglaciation chronology at the scale of the Alps.

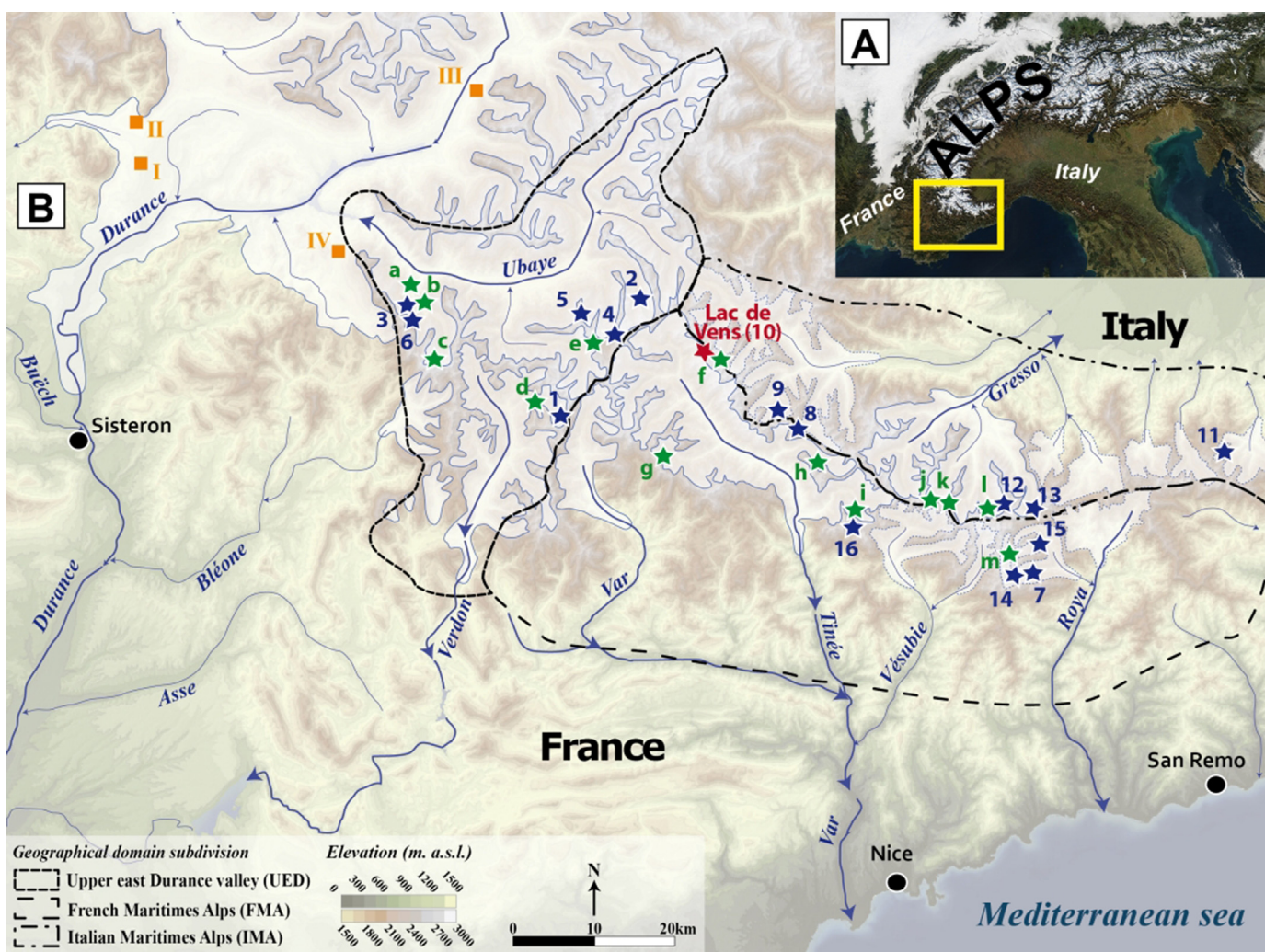
## 2. The Mediterranean Alps

The study area is located between latitudes 44.4°N and 44.0°N and lies astride mountain cirque catchments of the Southern Alps (Fig. 1): the Upper Eastern Durance (UED) and the French and Italian Maritime Alps (FMA and IMA). The mean altitude is about 2000 m a.s.l. and the highest peaks reach elevations of 3000 m a.s.l. The UED is drained by the Durance, Ubaye and Verdon Rivers. The Maritime Alps are drained by the Var, Tinée, Vésubie and Roya Rivers on the French side and by the Gesso and Stura di Demonte Rivers in the Italian side (Fig. 1).

Due to the short source-to-sink distance, sharp topographic contrasts provide favourable conditions for steep-side cutting, narrow valleys and canyon development. The relief can be summarized in a two-step topographic profile: dissected mountains crests are characterized by vertical rock bars overhanging small smoothed glacial cirques, which in turn overhang their main fluvial valleys by steep slopes of 25°–45°. The geology of the Maritime Alps massif consists mainly of granitic basement rocks and Permian sandstones. Vast areas of sedimentary rocks, composed of conglomerates and evaporites, occur on the southern and western flanks of the massif. In the UED, the lithology consists of sedimentary terrains forming the limestones of the Ubaye-Embrunais thrust-sheets and Cretaceous flysch, Aptian–Albian black shales, Upper Cretaceous limestones, and Annot sandstones. Quaternary deposits consist in alluvial deposits and slope colluviums between 1000 and 2000 m a.s.l. As a result of the steepness and sediment cover of these slopes, numerous landslides have occurred on the flanks of the main valleys (Julian and Anthony, 1996).

The vegetation consists of Mediterranean plants tolerant to altitude and plants having affinity with a cool and humid climate. The intra-alpine low-altitude vegetation belt (500–800 m a.s.l.) is dominated by a diversified oak forest (mainly pubescent oak). Cultivated trees such as chestnut and olive trees are common on south-exposed slopes of the intra-alpine valleys. The mountain vegetation belt (800–1500 m a.s.l.) exhibits a strong asymmetry in conifer forest between the southern and the northern slopes. Scot pines dominate drier southern slopes whereas wetter northern slopes are favourable to the development of fir-spruce forests regularly associated with beech trees. Vegetation in cirque valleys is characteristic of the sub-alpine belt (1500–2200 m a.s.l.). Larch trees are sparsely distributed on slopes. This more open landscape is dominated by dwarf species such as juniper, blueberry shrubs and rhododendron. The upper limits of forest attain 2200 m on the northern slopes and 1900 m on the southern slopes. Beyond 2200 m a.s.l., the alpine vegetation belt is dominated by the herbaceous species of alpine meadows.

A major aspect of the climate of this alpine mountain setting is the influence of the Mediterranean. At 1800 m a.s.l., the climatic regime is typical of the northern Mediterranean (dry summers and mild winters) and influenced by altitudinal gradients. In both the FMA, the IMA as in the UED, air temperatures are generally higher than in the northern Alps and snow cover duration is shorter. The mean annual air temperature at 1800 m a.s.l. is 5 °C, varying from 0.3 °C in winter to 9.9 °C in summer (Durand et al., 2009). The study area shows relatively high mean snow thickness values at all altitudes due to rather high amounts of moisture from the nearby Mediterranean Sea (Durand et al., 2009). Snow cover duration in the study area is 140 days at 1800 m a.s.l. and 185 days at 2100 m a.s.l. A strong precipitation regime characterised by a NW–SE asymmetry differentiates the Maritime Alps and the UED in terms of climatic domains. The FMA and the IMA are characterized by higher mean annual precipitation (1340 mm) than the UED (1200 mm). The contrast in precipitation regime is stronger during summer when precipitation occurs as rainfall. The southeast flanks



**Fig. 1.** (A) Location of the Mediterranean Alps; (B) Regional map of the Mediterranean Alps and geographical domain subdivisions (black dashed lines). Blue stars indicate lakes and mires of the core sediment corpus (1-Allos, 2-Lauzanier, 3-Vallon du Loup, 4-Restefond, 5-Terres Plaines, 6-Vallon de Provence, 7-Long Inférieur, 8-Orgial, 9-Fate, 10-Vens, 11-Rifugo Mondovi, 12-Vei del Bouc, 13-Sabion, 14-Mouton, 15-Grenouilles, 16-Petit). Geomorphologically mapped glacial stages in upper cirque valleys are indicated by green stars (a-Dormillouse, b-Ambouin, c-Haut-Laverq, d-Allos, e-Restefond, f-Vens, g-Roya, h-Saint-Sauveur, i-Mollières, j-Gelas Peak Northeast face, k-Gelas Peak Northwest face, l-Upper Gresso, m-valley of Marvels and Bego peak). The maximum extension of the Last Glacial glacier tongue is shown in transparent shade delimited by a continuous line where such extension is ascertained and by a dashed line for uncertain limits. Other sites cited in text are indicated by orange squares (I- Pelléautier; II- Corréo; III- Siguret; IV- Saint-Léger). (For interpretation of the references to colour in this figure legend, the reader is referred to the web version of this article.)

of the Maritime Alps, along the Italian border, act as an atmospheric barrier resulting in exposure of the southernmost massif to Mediterranean air masses while sheltering it from north Atlantic winds. In contrast to the Maritime Alps, the UED is mostly exposed to active weather systems associated with northwest air masses.

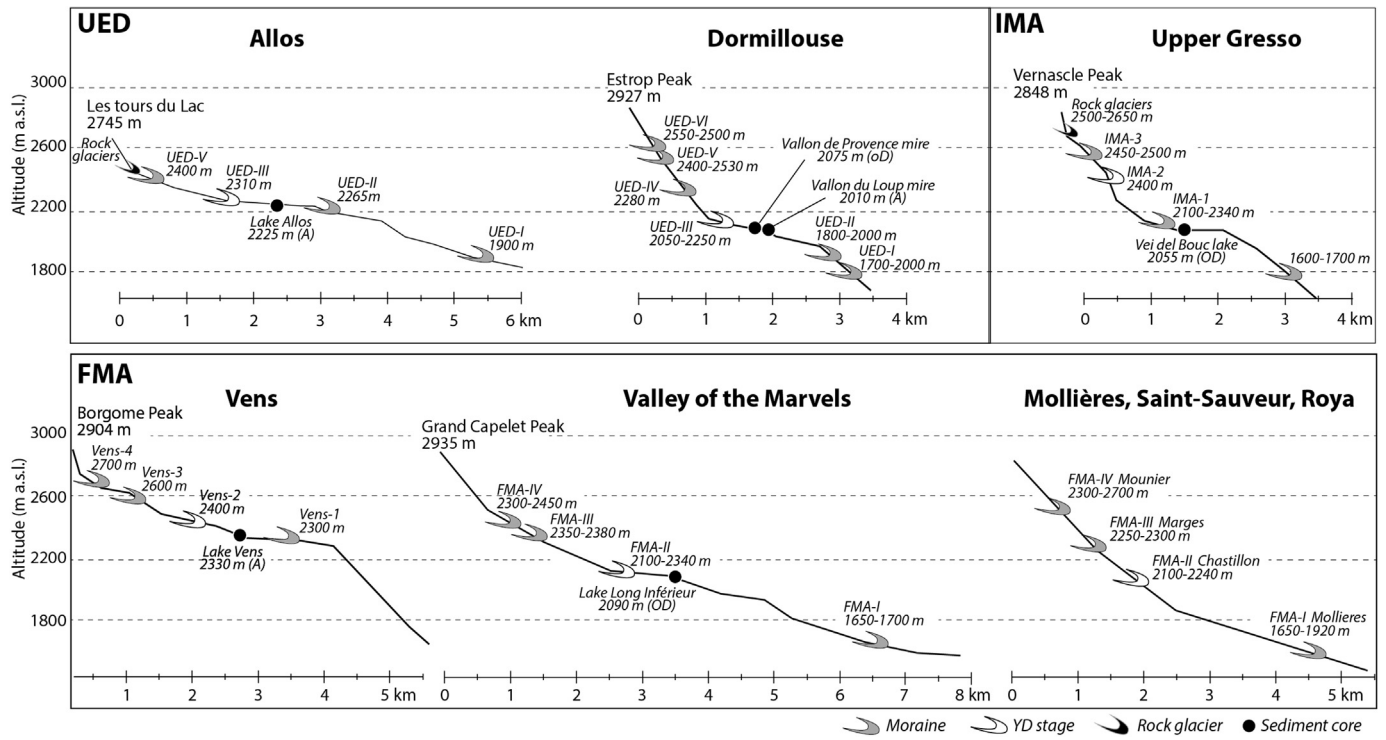
### 3. Overview of the glacial and deglacial geomorphological evolution in the Mediterranean Alps

#### 3.1. The valley glacier phase

Several geomorphological studies of the Quaternary glaciation of the lowlands of the southwestern Alps have been published. Two main glacial stages are recognized in the Durance valley tributaries (Gidon and Monjuvent, 1969; Jorda, 1975; Tiercelin, 1977; Julian, 1980; Jorda and Rosique, 1994; Jorda et al., 2000; Rosique, 2004). The oldest stage is attributed to the MIS-6 (Riss) on the basis of altitude and degree of soil weathering. Jorda et al. (2000) attributed the freshest and more extensive glacier forms entrenched in these former glacial deposits to the Last Glacial Maximum (LGM, MIS-2,

Würm). At their maximal extension, glacier tongues advanced 120 km into the Durance valley (500 m a.s.l.), 35 km into the Verdon (1010 m a.s.l.), and 40 km into the Tinée (ca 500 m a.s.l.). This maximal extension is not directly dated and the authors have assumed that it could be related to the marine Heinrich-3 event (GS-3: 27,500–23,300 years; Blockley et al., 2012). A phase of palaeosol development (brown Mediterranean soil containing malaco-fauna typical of hygrophilous woodlands) dated at  $2\sigma$  in the Bléone valley at 29,900–22,900 cal. BP (Jorda, 1988) and in the Buëch valley at 24,000–22,400 cal. BP (Brugal, 1991 in Rosique, 2004) indicates river incision and reduced detrital sediment supply that argue in favour of the establishment of interstadial climatic conditions (termed the “Bléone Neowürmian Interstadial”). The latest glacier extension corresponding to the near-maximum extent in the Durance is well  $^{14}\text{C}$  dated from subfossil wood buried in glacial till at 23,000–20,800 cal. BP ( $2\sigma$ ), which is concomitant with the marine Heinrich-2 event (Jorda et al., 2000; Rosique, 2004).

The last glacier retreat in the Durance valley has been depicted as a rapid phenomenon by Jorda and Rosique (1994) and Rosique (2004) on the basis of palynological interpretations of valley



**Fig. 2.** Cirque valley profiles showing altitudinal locations of moraine ridges (from stage I to stage VI) and sediment cores from the Upper Eastern Durance (UED), the Italian Maritime Alps (IMA) and the French Maritime Alps (FMA). The Younger Dryas moraine stage is shown in white. In brackets are indicated the oldest palyno-stratigraphical zone in the pollen diagram of each sediment core (OD: Oldest Dryas; oD: Older Dryas; A: Alleröd).

glacio-lacustrine sequences. The postglacial infilling of the valley started at the beginning of the Oldest Dryas chronozone (GS-2b, Blockley et al., 2012) between 23,000 and 20,000 cal. BP [e.g., the mires of Pelléautier, Siguret, Roche de Rame, the Lauzes passes (De Beaulieu, 1977) and Corréo (Nakagawa, 1998)].

Evidence of Quaternary glaciation in the Maritime Alps (Tinée, Vésudie and Roya valleys) is scarcer, probably due to intense erosion leading to deeply incised valleys (Dubar and Anthony, 1995). The LGM is poorly constrained spatially on the French side of the Alps. In the Tinée valley, the glacier front at its maximum extent is located at 500 m a.s.l. (Julian, 1980). Further upstream in the upper Tinée valley, Bigot-Cormier et al. (2005) have indirectly constrained the age of the deglaciated valley by  $^{10}\text{Be}$  dating of slopes located at 1600 m a.s.l. at  $18,217 \pm 4328$  years. Terminal moraines are better preserved on the Italian side of the Maritime Alps. Federici et al. (2012) provide  $^{10}\text{Be}$  dating from the frontal moraine system that shows maximum glacier extension (700 m a.s.l.) in the Gesso valley ranging from  $20,140 \pm 1080$  to  $22,110 \pm 1190$  years. This age is similar to the near LGM of the Durance valley. After this period, glacier tongues moved upstream, occupying small feeder glacial basins.

### 3.2. The cirque glacier phase

Numerous moraine ridges are located in catchments at altitudes ranging from 1700 to 2700 m a.s.l. Recessional moraines are found at high altitudes or above the knick point of glacial steps, which correspond to cirque disconnection from the main glacier tributary system. The altitudinal distribution of these end-moraines indicates short glacier advances during a general deglaciation trend (Fig. 2). These moraine ridges are unevenly distributed in catchments and most of the clearly distinguishable moraines are located in the Ubaye and Verdon valleys for the UED, i.e., in the Haut-

Laverq, Dormillouse, Ambouin, Restefond and Allos areas (Jorda, 1975, 1976, 1980, 1983; Jorda and de Beaulieu, 1977; Dijkstra et al., 1990; Brisset et al., 2014), in the upper Gesso valley (Hannss, 1970; Finsinger and Ribolini, 2001; Federici et al., 2003, 2008, 2012) for the ITM, and in the Mollières, Saint Sauveur and Roya valleys (Schweizer, 1968a, 1968b; Julian, 1980) as well as the valley of Marvels (Dubar and Poizat, 1976; Begin, 1990) for the FMA. They are characterised by elevations of moraine ridges corresponding to the Equilibrium Line Altitude (ELA in metres a.s.l.) calculated with the Höfer method (Höfer, 1922) and the corresponding ELA depression ( $\delta\text{ELA}$ ) with respect to the present-day value (2800–2900 m a.s.l.). These data are summarised in Table 1.

The deglaciation time frame in the UED is constrained by Jorda (1975, 1980, 1983), Jorda and Beaulieu (1977), Jorda and Rosique (1994), Dijkstra et al. (1990) and Brisset et al. (2014) on the basis of pollen analysis and  $^{14}\text{C}$  ages obtained in high altitude lakes and mires of Terres Plaines, Vallon de Provence, Vallon du Loup, Restefond, and Allos. Six glacial stages occupy cirques (Fig. 2). Stages UED-I (1700–2000 m a.s.l.) and UED-II (1800–2000 m) are characterized by poorly preserved moraine ridges (sandstone boulders and striated pebbles), correspond respectively to ELA at 2100 and 2200–2300 m a.s.l. ( $\delta\text{ELA}$  at 800 m and 600–700 m), and are older than the early Alleröd. The lakes and mires of Restefond (Dijkstra et al., 1990), Terres Plaines, Vallon de Provence (Jorda and Beaulieu, 1977), and Allos (Brisset et al., 2014), all situated above these stages, provide pollen records starting at the beginning of the Alleröd, with a  $^{14}\text{C}$  age of 13,600–13,070 cal. BP ( $2\sigma$ ) in the Vallon de Provence mire and the onset of sedimentation in Allos Lake starting at 12,300 cal. BP. Therefore, authors attribute stages UED-I and II to the Oldest Dryas chronozone. Stage UED-III (2050–2200 m a.s.l., ELA at 2250–2400 m,  $\delta\text{ELA}$ : 600 m), characterised by well-preserved moraine ridges of sandstone boulders, is attributed to the most intense cooling of the Postglacial period i.e., the Younger

**Table 1**

Lateglacial moraine ridges according to altitudes location, mean ELA (Equilibrium Line Altitude) and ELA depression ( $\delta$ ELA) in respect to present day value (2800–2900 m a.s.l.) in the Upper Eastern Durance (UED), the French Maritime Alps (FMA) and the Italian Maritime Alps (IMA) referring to (1) [Jorda \(1975, 1980 1983\)](#), [Jorda and Beaulieu \(1977\)](#), [Brisset et al. \(2014\)](#), [Dijkstra et al. \(1990\)](#); (2) [Finsinger and Ribolini \(2001\)](#); (3) [Hannss \(1970\)](#); (4) [Federici et al. \(2008, 2012\)](#); (5) [Schweizer \(1968a, 1968b\)](#), [Julian \(1980\)](#); (6) [Dubar and Poizat \(1976\)](#); (7) [Begin \(1990\)](#). Stars indicate absence of ELA calculation by respective authors. The moraine attributed to the Younger Dryas advance is shaded. Asterisks indicates data not available in the publication of reference.

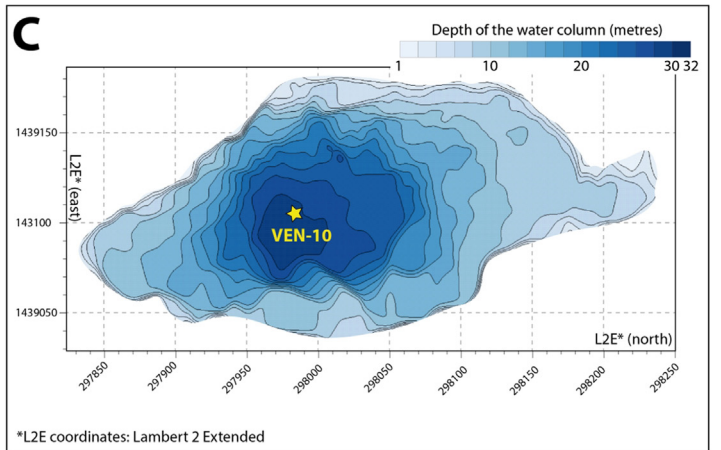
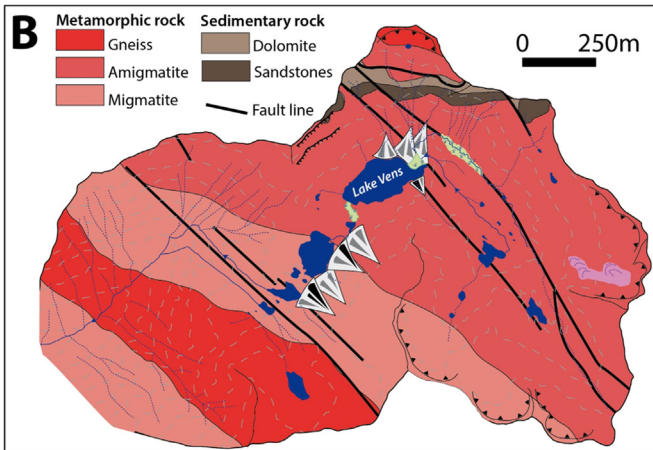
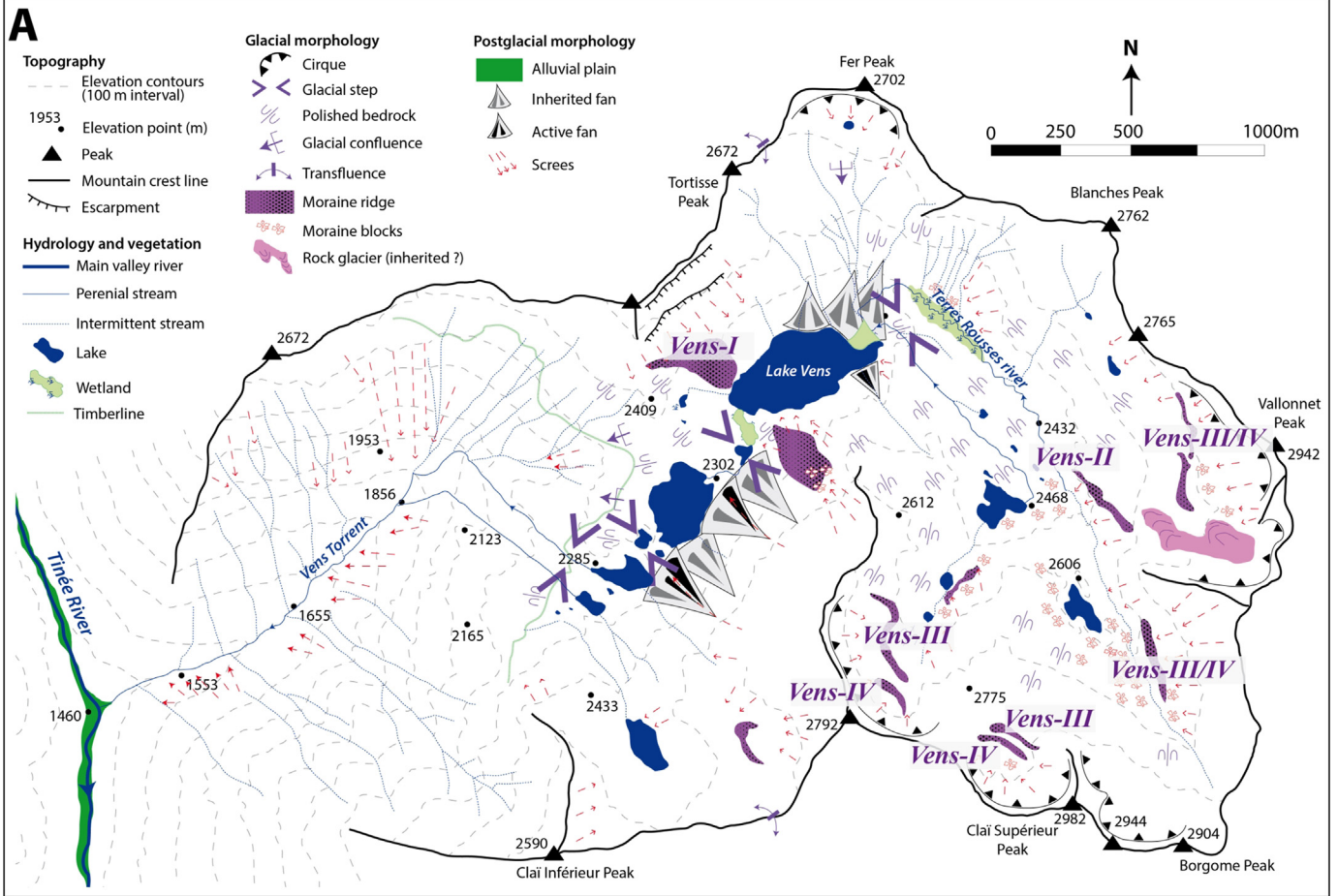
UED	Haut-Laverq, Dormillouse, Ambouin, Allos (1)	$\delta$ ELA	150	200	400–500	600	600–700	800
		Elevation (m a.s.l.)	2550–2600	2400–2300	2250–2350	2050–2250	1800–2000	1700–2000
		ELA (m a.s.l.)	2750–2760	2750	2520–2600	2250–2400	2200–2300	2100
IMA	Upper Gresso (2)	stages	UED-VI	UED-V	UED-IV	UED-III	UED-II	UED-I
		$\delta$ ELA	50–100		200	300	500	>550
		Elevation (m a.s.l.)	2500–2650		2450–2500	2400	2054–1900	1600–1700
	Gelas Peak Northeast face (3)	ELA (m a.s.l.)	2650–2700		2600–2650	2460–2570	2200–2400	*
		stages	rock glacier		IMA-III	IMA-II	IMA-I	
		$\delta$ ELA	50	50–100		300–400		
	Gelas Peak Northwest face (4)	Elevation (m a.s.l.)	2420–2620	2400–2600		2050–2400		
		ELA (m a.s.l.)	2700–2720	2700–2720		2400		
		$\delta$ ELA				520–530		
FMA	Mollières, Saint-Sauveur, Roya (5)	Elevation (m a.s.l.)				1810		
		ELA (m a.s.l.)				2380		
		$\delta$ ELA		300	400–450	600		800–900
	Marvels (6)	Elevation (m a.s.l.)		2300–2700	2250–2300	2100–2240		1922–1650
		ELA (m a.s.l.)		2550–2600	2500–2550	2300–2400		2090–2110
		stages		FMA-IV	FMA-III	FMA-II		FMA-I
	Bégo (7)	$\delta$ ELA		370	450	575	800	
		Elevation (m a.s.l.)		2300–2450	2300–2380	2100–2340	1760	
		ELA (m a.s.l.)		*	*	*	*	
	Vens (this study)	stages		FMA-IV	FMA-III	FMA-II	FMA-I	
		$\delta$ ELA		0–325	350–425	450–550		550–900
		ELA (m a.s.l.)		2612–2892	2440–2680	2360–2626		1990–2450
		$\delta$ ELA		200	250	350	>400	
		Elevation (m a.s.l.)		2700	2600	2400	2300 or less	
		ELA (m a.s.l.)		2800	2700	2500	*	
		stages		Vens-IV	Vens-III	Vens-II	Vens-I	

Dryas. Stages UED-IV, V and VI, respectively at 2250–2350 m, 2500–2500 m and 2550–2600 m (ELA at 2520–2600, 2750 and 2750–2760 m,  $\delta$ ELA at 500, 200 and 150 m) are probably Holocene. [Jorda \(1975\)](#) and [Jorda and Beaulieu \(1977\)](#) presumed that moraine ridges of stage UED-IV, rich in fine sand, are possibly contemporary of the Preboreal Oscillation from  $12,896 \pm 4$  cal. BP to  $11,703 \pm 4$  cal. BP ([Blockley et al., 2012](#)). The freshest forms from UED-V and UED-VI are probably associated with the Little Ice Age (LIA; 17th–19th century).

In the IMA, glacial stages have been accurately described in the tributaries of the upper Gesso valley. The earliest observations were made by [Hannss \(1970\)](#) on the northeast face of Gelas Peak. This author described three stages: the lowest at 2400 m a.s.l. (ELA: 2050–2400 m,  $\delta$ ELA: 300–400 m) is represented by blunted frontal moraine ridges attributed without dating to the Daun stadial ([Maisch, 1992](#)); the two highest stages around 2700–2720 m a.s.l., (ELA: 2400–2600 m,  $\delta$ ELA: 50 m) are sharp ridges made of finer material, probably formed during the 17th–19th century (LIA). Later, [Finsinger and Ribolini \(2001\)](#) identified in the narrow valley of Vei del Bouc three stages made up of massive diamicton, and matrix-supported variably sized blocks in a sandy gravel matrix. The lower moraine ridge (IMA-I), which is locally very thick, located between 1900 and 2150 m a.s.l. (ELA: 2200–2400 m,  $\delta$ ELA: 500 m), is situated near the mire of Vei del Bouc (2055 m) which is deglaciated since the Bölling–Alleröd pollen chronozone (GI-1e, at 14,500 cal. BP, [Blockley et al., 2012](#)). Authors have supposed that this stage could be Oldest Dryas (GS-2b, at 23,000–20,000 cal. BP, [Blockley et al., 2012](#)). Further upward, the moraine ridge IMA-II is located at 2400 m a.s.l., (ELA: 2500–2550 m,  $\delta$ ELA: 300 m). At 2450–2500 m a.s.l. (ELA at 2600–2650 m,  $\delta$ ELA: 200 m), the IMA-III is correlated with a rock-glacier phase that developed from the apron of this moraine. At ELA of 2620 m, which could correspond to IMA-III, [Ribolini et al. \(2007\)](#) dated the advance of the Schiantala rock glacier at 2730–2150 cal. BP ( $2\sigma$ ), from organic-rich layers and organic mats in sediment cores. The following LIA advance likely

added material to the former glacial deposit and formed internal ridges of rock glaciers at 2420–2650 m a.s.l. [ELA: 2650–2700 m,  $\delta$ ELA: 50–100 m; [Finsinger and Ribolini \(2001\)](#), [Hannss \(1970\)](#)]. On the northwest face of Gelas Peak, [Federici et al. \(2008\)](#) provide a  $^{10}\text{Be}$  date of  $11,340 \pm 370$  yr constraining a frontal moraine situated at 1810 m a.s.l. (ELA: 2380 m,  $\delta$ ELA: 520–530 m) to the Younger Dryas.

In the FMA, [Schweizer \(1968a, 1968b\)](#), [Julian \(1980\)](#) and [Begin \(1990\)](#) describe four stages occupying cirques. These stages, preserved in the Mollières valley, have also been found at Saint-Sauveur and Roya valleys and in the valley of Marvels ([Figs. 1 and 2](#)). The oldest is the FMA-I (named Mollières stage). It is characterized by partly dismantled moraine ridges, and is located at 1650–1920 m a.s.l. (ELA at 2090–2110 m a.s.l.,  $\delta$ ELA: 800–900 m). Most of the moraine ridges in upper cirques in the French Maritime Alps seem to have been formed during the following FMA-II (Chastillon stage). This stage is well marked by frontal moraine ridges made of coarse material and boulders around 2100–2240 m a.s.l. (ELA at 2300–2400 m a.s.l.,  $\delta$ ELA: 600 m). Locally, moraines of this stage become confused with rock glacier. Upwards, the FMA-III (Margès stage) at 2250–2300 m a.s.l. (ELA at 2500–2550 m a.s.l.,  $\delta$ ELA: 400–450 m) is mostly made of coarse material from scree. The youngest stage is the FMA-IV (Mounier stage), commonly represented near the French/Italian boundary at 2300–2700 m a.s.l. (ELA at 2550–2600 m a.s.l.,  $\delta$ ELA: 300 m). These four features are not dated. On the basis of comparisons between the glacial and pollen records in the Swiss and Austrian Alps, [Schweizer \(1968a\)](#) proposed that the FMA-I, II, III and IV could correspond respectively to the Schlern, the Gschnitz, the Daun and the Egesen stages which were also not absolutely dated and which were attributed at that time to the end of Lateglacial and to the Holocene period. Later, [Julian \(1980\)](#) suggested that FMA-I, II, III and IV could be younger, corresponding respectively to the Oldest Dryas, Younger Dryas, Preboreal and Boreal periods. In the valley of Marvels, these four stages are also well identified ([Dubar and Poizat, 1976](#); [Begin, 1990](#)). Pollen



**Fig. 3.** (A) Geomorphological map of the Vens catchment and location of the glacial stages (stages Vens-I to Vens-IV). (B) Simplified geological map of the Vens catchment. (C) Bathymetrical map of Lake Vens.

and radiocarbon data from Lake Long Inférieur (2090 m a.s.l.; de Beaulieu, 1977) testify that the lake was already ice-free at the end of the Oldest Dryas chronozone, proving that FMA-I and FMA-II, situated downstream of the lake, are older.

Finsinger and Ribolini (2001) proposed a comparison between glacial stages throughout the Mediterranean Alps and concluded that the deglaciation scheme seemed to be similar. But this comparison suffers from a lack of dating, and ELA elevations and  $\delta$ ELA are noticeably different in UED, FMA and IMA (Table 1). The sediment core of Lake Vens (2330 m a.s.l.), situated between FMA-II and

III (see below), as well as a complete review of pollen and sedimentological data from all sediment cores studied in the three geographical domains, will contribute to improve and revise the time frame of the last stages of deglaciation in the Mediterranean Alps.

#### 4. Geomorphological setting of the Vens catchment

The Vens catchment (44.32°N; 6.94°E) is a glacial-inherited cirque located in the northwestern part of the Maritime Alps, on

the left bank of the Tinée valley (Fig. 3A). Catchment altitudes range from 2300 to 2980 m a.s.l. The main basement outcrop (Fig. 3B, 94%) consists of Hercynian crystalline rocks (granite and gneiss). Permian–Triassic dolomite and sandstones (0.24 km<sup>2</sup>; 6% of the catchment) are locally preserved on northeast-facing crests. The cirque floor consists of smooth striated glacial steps and thick moraine block deposits. Several coalescent cirques gouged out on the southern slopes correspond to inherited glacier accumulation zones. Four glacial stages were recognized in the cirque (Fig. 3A). Stage Vens-I, located 2300 m a.s.l. at the glacial confluence of the hanging cirque of the Vens and Tinée valleys on the western flanks of Lake Vens, consists of boulders of variable size (maximum diameter of 2 m) covering the polished glacial threshold (basal moraine). As this moraine is a remnant of a lateral moraine ridge, estimation of the corresponding ELA and  $\delta$ ELA is hazardous. Three stages are found above Lake Vens in the Terres Rousses river valley. Stage Vens-II is a poorly preserved recessional moraine ridge positioned lengthwise relative to glacier flow at an altitude of 2400 m a.s.l. (ELA: 2500 m,  $\delta$ ELA: 350 m). The highest ridges of stage Vens-III (2600 m a.s.l., ELA: 2700 m,  $\delta$ ELA: 250 m) and Vens-IV (2700 m, ELA: 2800 m,  $\delta$ ELA: 200 m) are small-amplitude end-moraines, positioned transversally to glacier flow. Vens-III and IV are well preserved below Clai Supérieur Peak while their forms are less discernible in the eastern part of the glacial cirque (undifferentiated end-moraines of Vens-III and IV). In the southeast there is evidence of a rock-glacier near to the melting point (Ribolini et al., 2007).

Lake Vens (2330 m a.s.l., 45 m deep, and with an area of 0.1 km<sup>2</sup>) is located on the longitudinal axis of the glacier tongue in a slight S–N to E–W bend (Fig. 3A–C). The southern catchment of Lake Vens is drained by several streams flowing into the lake from block moraines. Three coalescent debris fans feed the lake intermittently.

The current timberline of *Larix-Picea* is located at 2200 m. Sparse trees (*Larix*) are observed at 2500 m a.s.l. The catchment landscape is open and the vegetation characterized by a degraded alpine meadow thriving on a thin soil commonly restricted to bedrock cracks and colonising scree.

## 5. Methods

### 5.1. Sedimentological analysis

From the deepest part (45 m-deep) of Lake Vens three parallel sediment cores were retrieved in 2010 using a UWITEC piston corer in order to obtain a complete overlapping sediment sequence. Colour parameters were continuously analysed from the fresh sediment surface at 3 mm intervals using a Konica Minolta CM-2600d spectrophotometer. The magnetic susceptibility of the sediment was measured using a Barrington MS2E surface-scanning sensor at a 1 cm interval. The same interval was used for the determination of water content. Wet sediment samples were weighted and dried in the oven at 105° for five days and their dry weight calculated. Grain-size analysis was carried out on bulk wet sediment sampled every 2 cm using a Malvern Mastersizer S. The mineralogical and the micro-palaeontological composition were identified by observing sediment using a binocular and microscope.

### 5.2. Pollen analysis

Pollen analyses were carried out on 88 samples (constant volume of 4 mL) that were chemically extracted following the protocol of Feagri and Iversen (1975). A minimum of 300 pollen grains were identified according to keys and pollen atlases (Moore et al., 1991; Reille, 1999). Pollen results are shown as percentages of the terrestrial pollen sum and as pollen grain concentrations (number

of pollen grains per mL). Subdivision into biozones of the pollen diagram (Local Pollen Assemblage Zones: LPAZ; Fig. 5) and into sedimentological units was conducted independently on the two datasets by cluster analysis using the Rioja package (Juggins, 2012). Optimal diagram partitioning has been fixed by comparison of the Bstick model (Bennett, 1996) with the Coniss model (Grimm, 1987). Significant zones/units based on the Bstick model are shown as lines, whereas exclusive Coniss significant zones are delineated by dashed lines.

### 5.3. Chronology

#### 5.3.1. Absolute dating and age–depth model

Twenty-five AMS <sup>14</sup>C dates were obtained on core VEN10-II (Table 1). Four additional AMS <sup>14</sup>C dates and accumulation rates inferred from <sup>210</sup>Pb obtained in a previous study of the short core VEN09P3 (Petersen et al., 2014) have been correlated to VEN10-II. Due to lack of substantial terrestrial materials, we also used bulk organic matter of the size of pollen. Centimetre-thick bulk sediment samples were chemically pre-treated to reduce initial volume and remove carbonate content (digestion in HCl and HF) and sieved to concentrate the fraction size between 10 and 160  $\mu$ m. Conventional <sup>14</sup>C ages are calibrated (cal. BP) using the IntCal13 curve (Reimer et al., 2013) based on the 2 sigma interval. The age–depth model has been computed for the corrected depth taking into account continuous sedimentation processes using the module Clam of Blaauw (2010) based on a cubic spline (type = 4, smooth = 0.65, 95% probability). The Age–Depth Model (ADModel) derived age is reported using the 2 sigma interval cal. BP.

#### 5.3.2. Relative pollen biostratigraphy

A large number of pollen studies over the last decades have provided a detailed overview of local to regional-scale vegetation changes. As proposed by Van der Knaap et al. (2005), pollen trends that depend with reasonable certainty directly on dated climate forcing are used to correlate pollen diagrams of nearby sites, including the transitions Alleröd to YD and YD to Preboreal (Holocene). Hence, by comparing Local Pollen Assemblage Zones (LPAZ) of individual sites with the large-scale biostratigraphical framework, chronologies of records lacking relevant <sup>14</sup>C ages can be significantly improved. Inter-sites palynological comparisons must be conducted taking into account the altitudes of sites and their biogeographical domains. Therefore, lowland sites only record discrete pollen changes during major climatic events, Lotter et al. (1992) pointing out that cool events (such as the Younger Dryas) could only be recorded at higher altitude sites, which are more sensitive. In addition, colonisation by meso-thermophilous trees during the Holocene might not be strictly contemporaneous between two sites because of possible migration lag depending on distance from glacial refuges (Birks and Line, 1992).

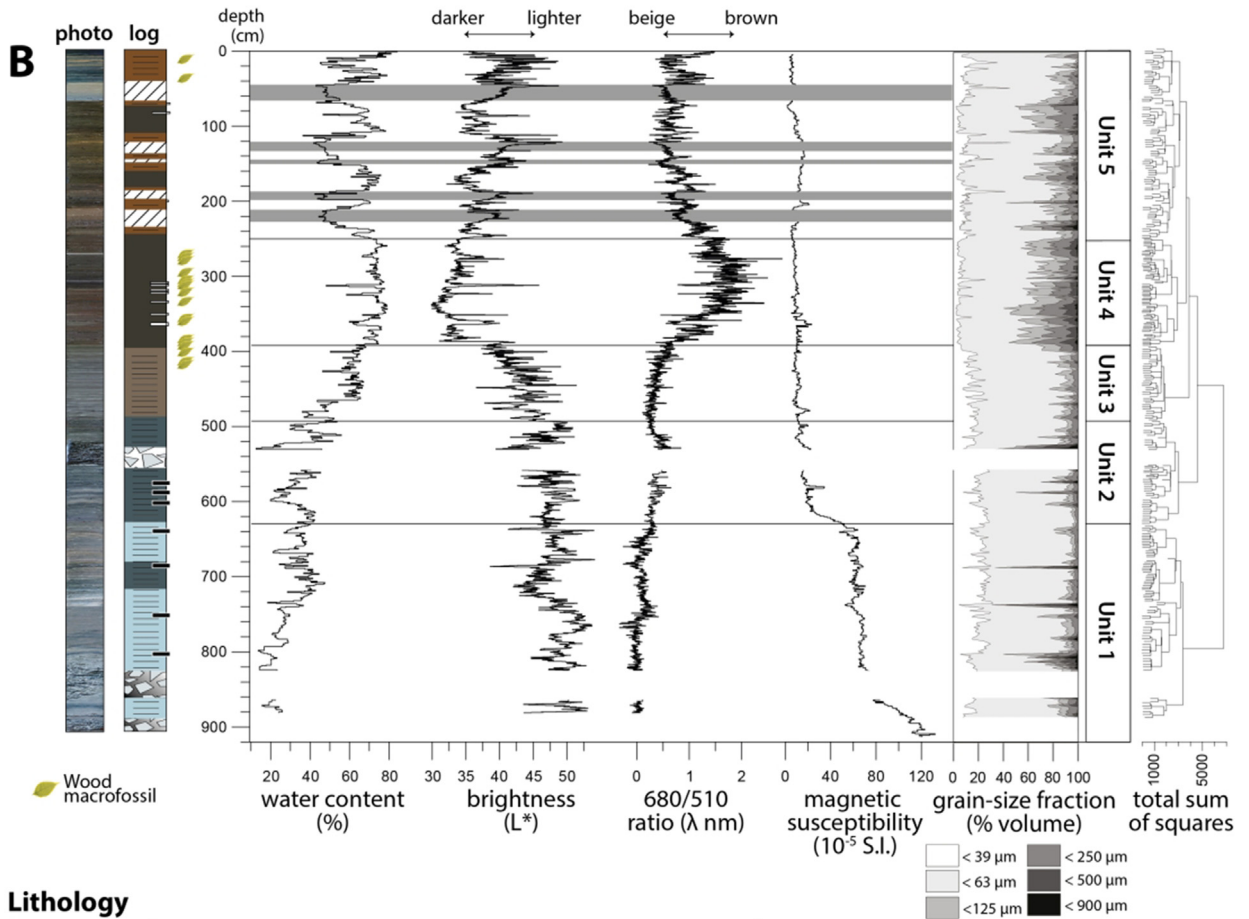
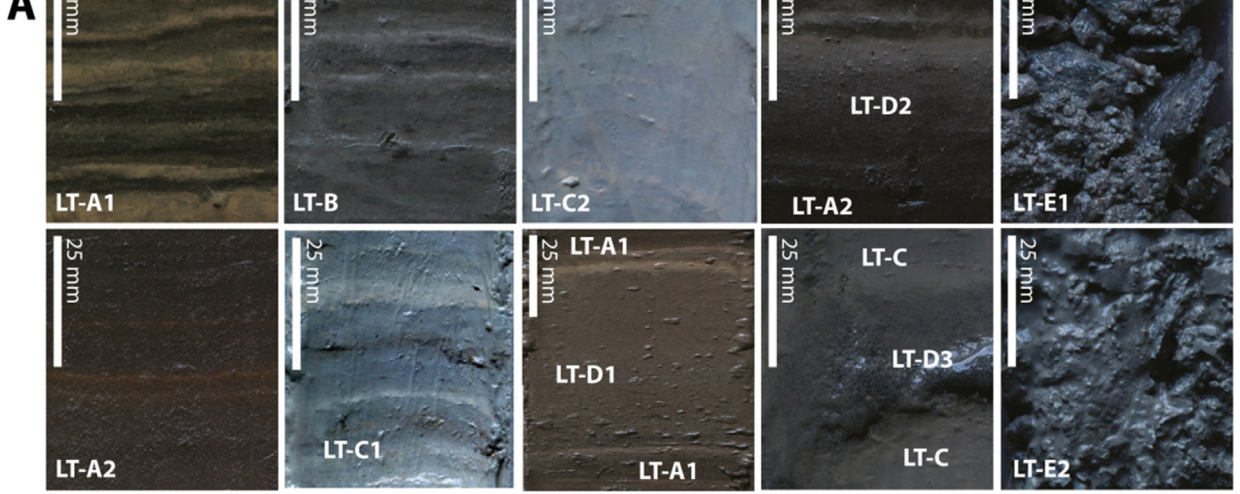
Comparison between the VEN10-II LPAZs and local biostratigraphy is therefore based on independent dated sites on which: (1) pollen sampling resolution is accurate for a specific discussed period, and (2) palynostratigraphical assignment is well constrained for the stated period.

## 6. Results

### 6.1. Lithostratigraphy and sedimentology

The composite core of VEN10-II shows five distinct lithotypes (Fig. 4A) characteristic of lacustrine background sedimentation (from LT-A to LT-C) and of instantaneous events (from LT-D to LT-E). The significant stratigraphical units (Fig. 4) have been defined using cluster analysis on the background lacustrine sedimentation





## Lithology

### Continuous sedimentation

Lithotype A: Dark-brown rich diatomite

- LT-A1: Millimeter-thick dark-brown to beige laminated
- LT-A2: Non to faintly laminated, oxydation patterns

Lithotype LT-B: Millimeter-thick dark-grey to light-grey laminated muddy laminated

Lithotype C: Light-blue to light beige muddy compacted laminated

- LT-C1: Centimeter light-blue to brown laminated
- LT-C2: Pluricentimeter-thick light-blue laminated

### Instantaneous layer

Lithotype D: Sand layer

- LT-D1: Matrix-supported light-brown medium-sand graded bed
- LT-D2: Grain-supported light-grey medium-sand graded bed
- LT-D3: Coarse-sand grey bed

Lithotype E: Gravel layer

- LT-E1: Gravel to very coarse gravel
- LT-E2: Light grey sandy-silty matrix-supported gravel to very coarse gravel

**Fig. 4.** (A) Lithotype photography of core VEN10-II and (B) synthetic lithostratigraphy with vertical profiles of water content, colorimetric parameters of lightness and beige/brown variation (680 nm/510 nm ratio), magnetic susceptibility (MS), grain-size classes and significant units defined by cluster analysis. (For interpretation of the references to colour in this figure legend, the reader is referred to the web version of this article.)

exclusively. The lowermost **unit 1 (909–620 cm)** is dominated by laminated, light-blue to beige ( $L^* > 45$ ), clay silt alternations (LT-C2). Water content is minimum (mean of 30%). Values of magnetic susceptibility are high (between 120 and  $60 \times 10^{-5}$  SI). Microscopic observations reveal the presence of aluminosilicate minerals (quartz, feldspar) and detrital carbonate. Particle size distributions of blue layers are normally distributed around a mode at 4–15  $\mu\text{m}$ . In beige layers, particle size distributions are unimodal and less well sorted (mode at 15–25  $\mu\text{m}$ ). At the bottom of the core, sediment is composed of matrix-supported coarse magnetic gneissic material reworked from moraine deposits (LT-E2; SM =  $120 \times 10^{-5}$  SI). Several peaks of coarser grain size are indicated by the lithotype LT-D3 (grain size mode at 100–500  $\mu\text{m}$ ). From 720 to 620 cm, the water content increases to 40% together with the appearance of darker laminations (alternation of clay silt LT-C2 and LT-C1). **Unit 2 (620–490 cm)** is characterized by light blue to brown laminations (LT-C1). Values of magnetic susceptibility drop to  $12 \times 10^{-5}$  SI. Between 530 and 556 cm, clayey sedimentation is interrupted by one 28 cm thick layer of very coarse gravels (LT-E1), and by thin sandy layers (LT-D3). In **unit 3 (490–395 cm)**, laminations become progressively finer and darker (LT-B). Water content increases to 60%. In **unit 4 (395–245 cm)**, lamination disappear and the sediment becomes a homogeneous dark brown gyttja (wavelength ratio 680/510 nm of the colorimetric analysis of 1.5). In this unit, light grey sand-graded layers (LT-D2) are interbedded in the predominant lithotype LT-A2. Water content reaches about 75% in the whole of unit 4. Grain size is coarser in this unit (around 50% of the sample volume comprises sizes  $> 63 \mu\text{m}$ ). Binocular observations indicate that these samples are mainly composed of diatom valves and colonies with sizes ranging from 100 to 1000  $\mu\text{m}$ , and to a lesser extent of amorphous red organic matter. The sediment is rich in plant and algal microfossils and in wood macrofossils. **Unit 5 (245–0 cm)** is characterized by alternating LT-A2 and LT-A1. In LT-A2, the diatom gyttja is homogeneous whereas in LT-A1 diatom gyttja is episodically intercalated with layers of beige detrital carbonates. This sequence comprises variably thick (10–22 cm) interbeds of instantaneous sediments (LT-D1 and LT-D2). Mean water content is about 75% in LT-A1 and drops to lower values (45%) in the instantaneous sedimentation (LT-D1 and LT-D2).

## 6.2. Pollen zones

Six Local Pollen Assemblage Zones (LPAZ 1 to LPAZ 6) were defined according to cluster zoning (Fig. 5), such that the pollen diagram is described in terms of major changes in vegetation assemblages. Pollen spectra from 909 to 793 cm are characterized by low pollen concentration (Fig. 5) and were sampled in blue sandy clay deposits. Hence, rare pollen grains observed in this sub-sterile section might be considered as pollution or reworked material.

**LPAZ 1 (from 792 to 710 cm)** is dominated by arboreal pollen (82%), mostly bounded by *Pinus sylvestris*. Non-arboreal pollen assemblages are characterized by alpine plants (Chenopodiaceae, *Artemisia*, Poaceae and *Thalictrum*). Sporadic grains of *Quercus deciduous*, *Corylus* and *Abies* suggest long-distance pollen transport from lower altitudes. The curve of *Juniperus*, a low pollen disperser (0.5%), is continuous.

**LPAZ 2 (from 710 to 620 cm):** Arboreal pollen and *Pinus* percentages decrease abruptly to 45% and tree pollen concentrations decrease. High values of Poaceae, Chenopodiaceae and maximum values of *Artemisia* (25%) and *Ephedra distachya* suggest a cold steppe of herbs/shrubs.

In **LPAZ 3 (from 620 to 460 cm)** herbaceous steppe taxa (*Thalictrum*, *Artemisia*, Poaceae) decrease concomitant with a re-expansion of *Pinus* and a general diversification of tree taxa (presence of *Tilia* and continuous curve of deciduous *Quercus*). In

LPAZ 3b, steppe taxa of *Artemisia* and Poaceae decline. The *Abies* curve starts at values of 7%.

**LPAZ 4 (from 460 to 370 cm)** *Abies* decreases to 1% while leaf-trees reached their maximum values (*Betula*, *Tilia*, and *Corylus*). The first occurrences of deciduous tree macrofossils (*Alnus*, *Betula* and *Salix*) are observed, indicating expansion of leaf-trees.

**LPAZ 5 (from 370 to 300 cm)** is marked by the *Abies* optimum (30%) and the first significant decline of *Pinus*. The abundance of conifer macrofossils indicates the local expansion of mixed conifer forests. The first occurrences of *Larix* and *Picea* are signs of more open woodland.

**LPAZ 6 (from 300 to 0 cm)** is characterized by low occurrences of terrestrial macrofossils and a decline of tree taxa (30%), suggesting a sparse distribution of trees in the catchment. High concentrations of herb taxa indicate a local development of diversified alpine steppe (Poaceae, *Artemisia*, Chenopodiaceae, Asteroideae and other herbs) associated with ruderal-anthropogenic herbs (*Rumex* and *Urtica*). The first pollen occurrence of cultivated trees *Castanea* and *Juglans* is observed at 244 cm.

## 6.3. Combination of radiocarbon age and $^{210}\text{Pb}$ accumulation rate

Table 1 shows results of the twenty-nine AMS radiocarbon ages of core VEN10-II. Fifteen radiocarbon dates on terrestrial plant macroremains (exclusively from 430 to 270 cm and from 47 to 37 cm) and ten on bulk organic matter of the size of pollen (pollen-concentrated organic matter) have been retrieved from the continuous sediment accumulation. All macroremain samples contained more than 1 mg of carbon and are therefore probably not contaminated by younger carbon (Wohlfarth et al., 1998). In addition we report from Petersen et al. (2014) (1) four  $^{14}\text{C}$  dates of unknown organic debris sampled from reworked deposits (homogenite-type) giving a maximal age for the deposit and (2) a  $^{210}\text{Pb}$ -derived accumulation rate of  $0.7 \text{ mm a}^{-1}$  covering the interval from 9 to 0 cm. The age results (Fig. 6) suggest various hypotheses for the age–depth model. To better constrain the chronology, we propose using biostratigraphical markers, in particular for the early lake formation and for the last 2000 years.

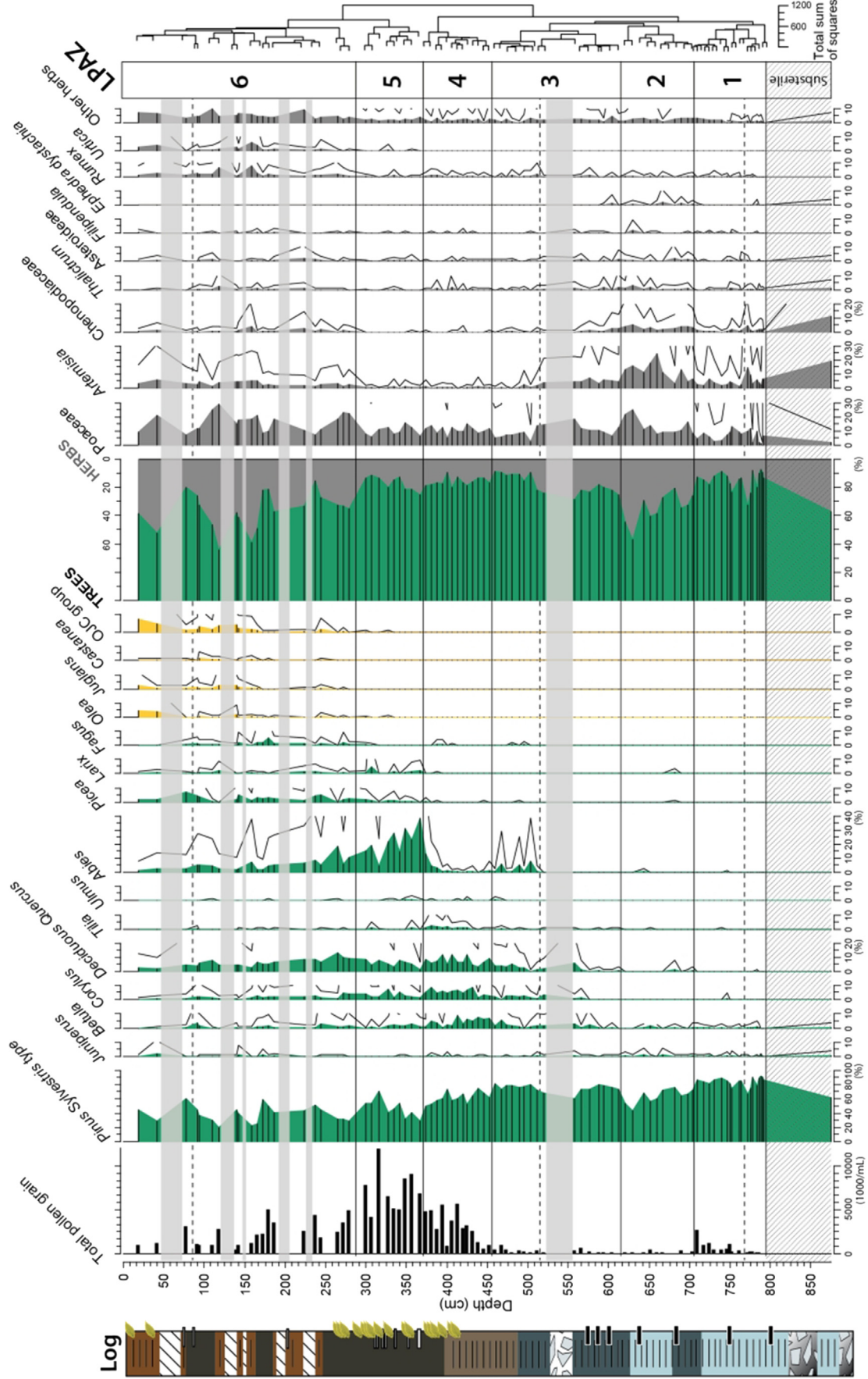
## 7. Interpretations

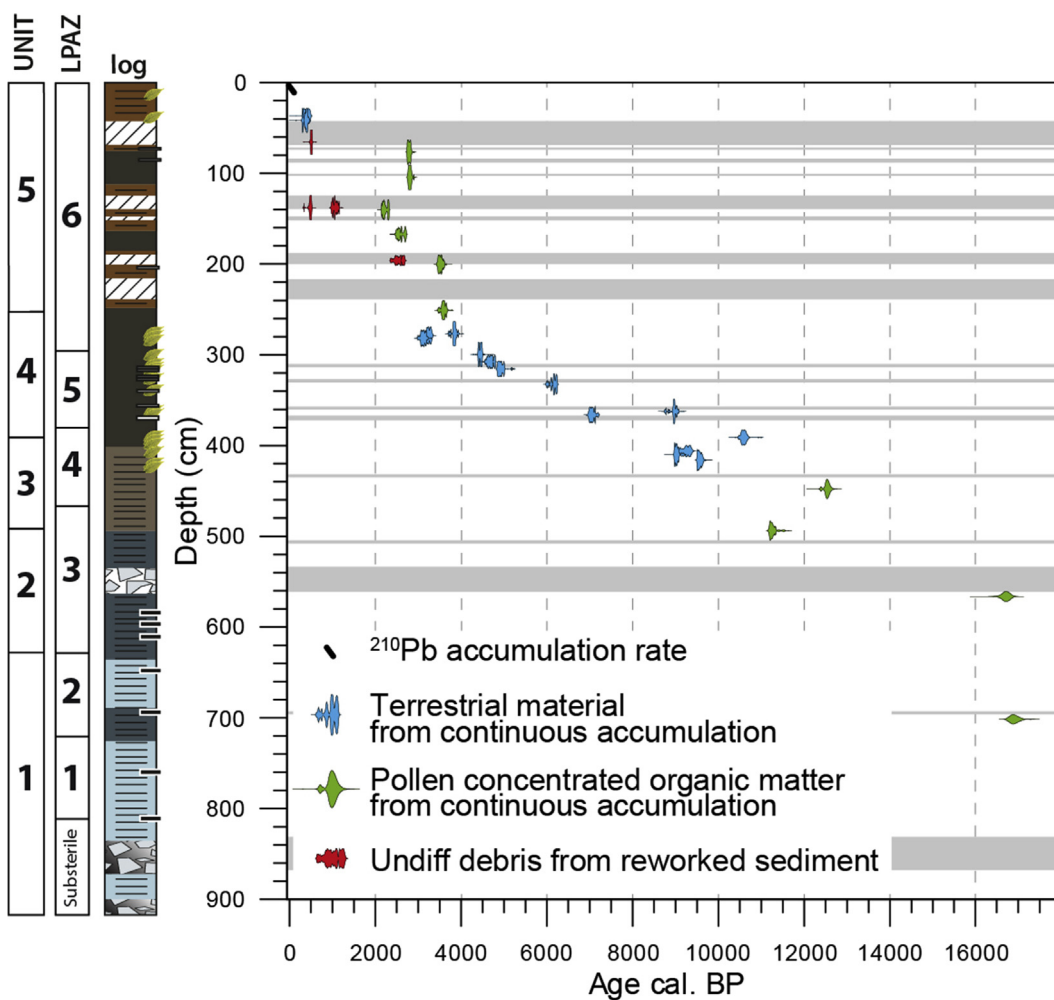
### 7.1. Main vegetation changes at Vens and inter-site comparisons

In this paragraph, the simplified Vens pollen record is interpreted both in terms of major landscape changes and palynostratigraphical correlations with other regional pollen records (Fig. 7).

#### 7.1.1. LPAZ 1: predominance of *Pinus* (correlated to the Alleröd)

This pollen zone is dominated by *Pinus* whereas *Betula* is poorly represented. The scarcity of *Betula* confirms that the base of the pollen record cannot be contemporaneous with the Bölling, marked by an optimum of birch woodlands in the Alps. This zone is characterized by relatively low herb pollen diversity but is dominated by Poaceae and *Artemisia*. Such pollen assemblages are comparable with those recorded in the Italian piedmont (Vescovi et al., 2007), the Southern Alps (Ponel et al., 2011), the Inner Alps (David et al., 2001; Ammann et al., 2007) and the Jura Mountains during the second part of the Alleröd (Magny et al., 2006). At Long Inférieur (De Beaulieu, 1977), the predominance of *Pinus* is also recorded during this period, characterized at a global scale by climatic warming initiated during the Bölling (Larocque and Finsinger, 2008; Lischke et al., 2013). This climatic improvement allowed rapid forest recolonisation, characterized in particular by a general development of pine forests in all European mountain areas





**Fig. 6.**  $^{14}\text{C}$  AMS ages for core VEN10-II according to type of sampled material. Note that the results can be interpreted in terms of various age–depth possibilities. Instantaneous deposits are shaded.

(Ammann et al., 2007). In summary, in the Vens catchment, it can be assumed that pioneer open pine woodlands were developing in the vicinity of the lake.

### 7.1.2. LPAZ 2: optimum of cold steppe herbs (correlated to the Younger Dryas – a)

The second pollen zone is marked by a transitional reversal of the *Pinus* curve while frequencies of *Artemisia*, *E. distachya*, *Thalictrum*, *Poaceae* and *Chenopodiaceae* reach higher values. Such assemblages indicate a local development of cold steppe grasslands linked with a decline in pine forests in the area. This reversal in the vegetation dynamics is typically recorded during the YD cold event: it is well illustrated in high elevation sites from the Alps (de Beaulieu, 1977; Wick, 2000; Vescovi et al., 2007).

Around the lake, vegetation was probably treeless and dominated by a steppe-like landscape, with the small transitional peak in deciduous *Quercus* resulting in an increased proportion of extra-regional vegetation input from lower altitudes following a more open landscape around Vens and Long Inférieur (de Beaulieu, 1977). The rapid lowering of pollen concentrations observed at the LPAZ 1/

LPAZ 2 boundary might indicate a decrease in general pollen productivity consecutive to a local disturbance in the vegetation dynamics and to scarcity of trees (high pollen producers). Many studies on the Swiss plateau (Lemdahl, 2000; Lotter et al., 2000) and in the Jura (Peyron et al., 2005) provide evidence for a climatic reversal during the YD with a reconstructed rapid lowering of mean summer and winter temperatures. Within the bounds of the uncertainties of dating methods, it has been assumed that global change recorded in Greenland (GS-1) during the YD occurred synchronously in the Alps (Heiri and Millet, 2005; Vescovi et al., 2007; Ilyashuk et al., 2009). GS-1 is dated by the INTIMATE Group from  $12,896 \pm 4$  cal. BP to  $11,703 \pm 4$  cal. BP (Blockley et al., 2012).

As suggested by Wick (2000), it can be assumed that the frequencies of *Pinus* observed during the YD in middle/high altitude sites might reflect extra-local input from lowland pine forests. During the latter part of the YD, the vegetation dynamics is marked by a moderate return of *Pinus* that has been well documented in the Southern French Alps (de Beaulieu, 1977; Court-Picon, 2007), the northern Alps (Lotter et al., 1992; Lotter, 1999; Guiter, 2003) and the Jura (Richard and Bégeot, 2000). Pine woodlands might have

**Fig. 5.** Simplified pollen diagram of VEN10-II from Lake Vens. Relative percentages of pollen taxa (grey shade) are calculated from total pollen sum (minimum 300 terrestrial pollen grains).  $5\times$  exaggeration curves are shown as dashed lines. Selected curves of pollen concentrations (number of grains per mL) are shown by black horizontal bar. Instantaneous deposits are shaded. Significant zones on Bstick model are shown as lines and exclusive Coniss significant zones are delineated by dashed lines.

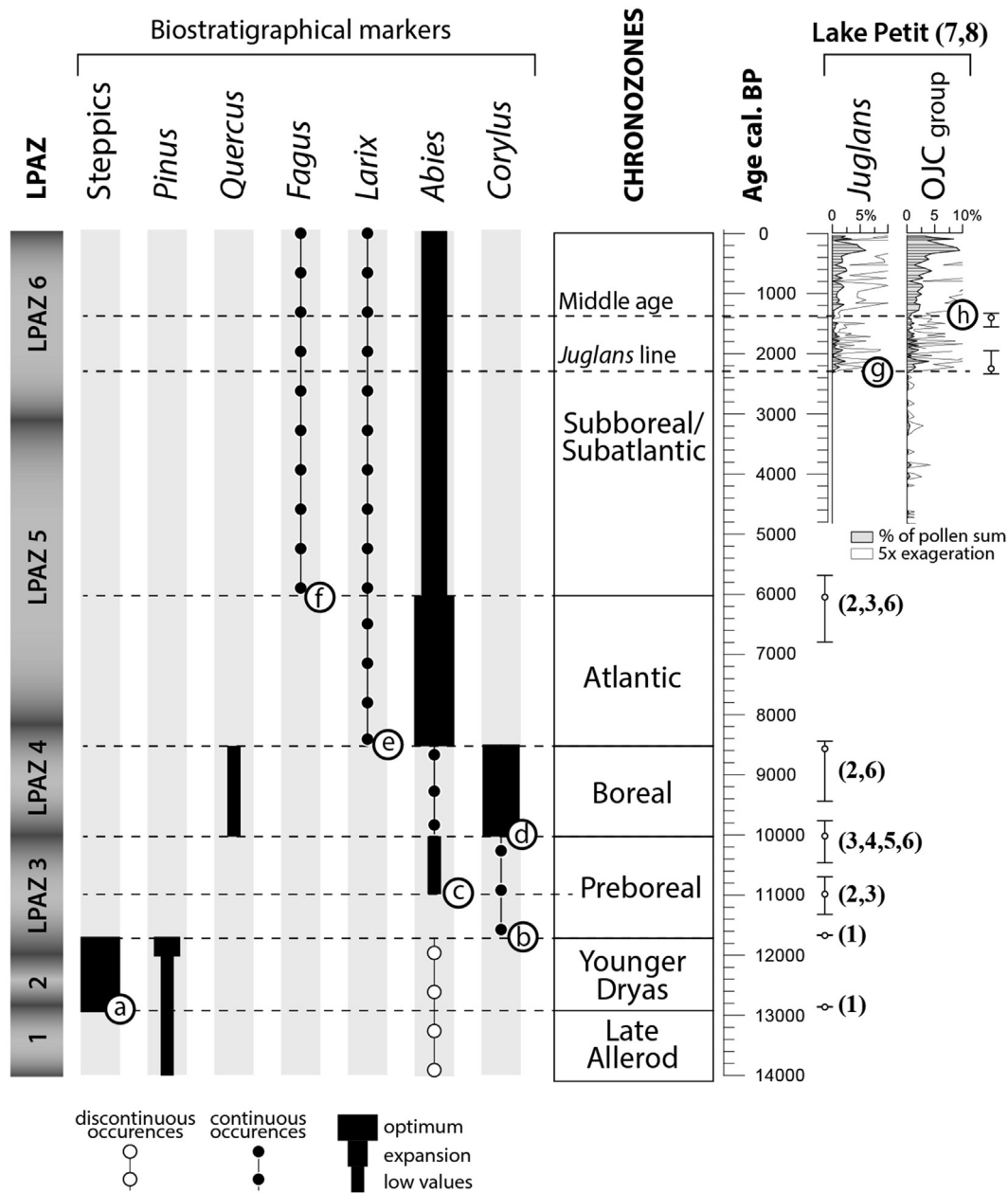


Fig. 7. Palynostratigraphical interpretation of pollen record of core VEN10-II. Chrono-stratigraphical markers are indicated by letters (a–h). Chronozone dating is based on INTIMATE chronology (1) for Younger Dryas (Blockley et al., 2012) and on radiocarbon ages ( $2\sigma$  interval and median age cal. BP) of Southern Alps pollen sites: (2) Muller et al. (2007); (3) De Beaulieu (1977); (4) Court-Picon (2007); (5) Finsinger et al. (2006); (6) Ponel et al. (2011); (7) Brisset et al. (2012); (8) Brisset et al. (2013).

initiated early recolonisation due to the warmer conditions that characterized the end of the YD (Peyron et al., 2005; Ilyashuk et al., 2009).

#### 7.1.3. LPAZ 3 (correlated to the Preboreal – b)

The appearance of continuous occurrences of *Corylus* and an increasing curve of meso-thermophilous trees, such as deciduous *Quercus*, mark the onset of the early Holocene (Preboreal/Boreal) in both the southern (de Beaulieu, 1977; Court-Picon, 2007) and northern Alps (David et al., 2001; Guitier, 2003). Hazel expansion occurred throughout the Alps between 11,500 and 10,500 cal. BP (Giesecke et al., 2011), with an earlier development of deciduous *Quercus* in the Southern Alps (Finsinger et al., 2006). The pollen record at Vens shows a similar pattern.

#### 7.1.4. LPAZ 4 (correlated to the Preboreal – c)

The continuous curve of *Abies* is a relevant biostratigraphical marker that is well-constrained by  $^{14}\text{C}$  dating. At Lake Long Inférieur (de Beaulieu, 1977), it is dated at 11,200–9270 cal. BP, and at about 10,000–9000 cal. BP in the French Inner Alps (Muller et al., 2007). An overview by Van der Knaap et al. (2005) of the chronology of migration and expansion of biostratigraphical taxa such as *Abies*, *Fagus*, *Picea* and deciduous *Quercus* provides evidence that the first regular occurrences and expansion of *Abies* needed to be interpreted in terms of two distinct criteria: first regular occurrences are observed within the time range 10,500–8500 cal. BP, whereas expansion occurred later, at 8500–8000 cal. BP. Moreover, according to these authors, *Abies* migrated into the Alps from south to north, and therefore might be recorded earlier than in the rest of

the alpine range. The pollen records of Vens and Long Inférieur support this hypothesis; at Vens, this is particularly well illustrated by a transitional curve prior to the maximal expansion of *Abies* recorded typically during the Atlantic synchronously with *Larix* (event e in Fig. 7). It can be assumed therefore that the onset of regular occurrences of fir might be contemporaneous with the first occurrences observed at the Lateglacial/Holocene boundary at Long Inférieur and at Sabion (de Beaulieu, 1977).

#### 7.1.5. LPAZ 5 (correlated to the Boreal – d)

This zone is marked by a declining curve of *Abies*, a synchronous optimum of *Corylus*, *Tilia*, and secondary deciduous *Quercus* classically recorded during the Boreal in the Alps around 10,000 cal. BP. This event is dated in the Southern Alps at 11,100–9780 cal. BP at Forest en Devouly (de Beaulieu, 1977), between 9500 and 10,300 cal. BP at Mouton (de Beaulieu, 1977), and between 10,390 and 10,010 cal. BP at Lauzons (Ponel et al., 2011).

#### 7.1.6. LPAZ 5 (correlated to the Atlantic – e)

The maximal expansion of *Abies* and the development of *Larix* are the major characteristics which allow assigning the pollen zone to the Atlantic period: as evidenced by Muller et al. (2007) and Van der Knaap et al. (2005), the optimum of fir in the Alps occurred within the period between 8500 and 6000 cal. BP. This event is dated in the Southern Alps at 8310–7880 cal. BP at Plan du Laus (De Beaulieu, 1977), between 8090 and 7400 cal. BP at Mouton (ADMModel, De Beaulieu, 1977), at 8310–7880 cal. BP at Saint Léger (Digerfeldt et al., 1997) and between 8460 and 6730 cal. BP at Lauzons (ADMModel, Ponel et al., 2011).

#### 7.1.7. LPAZ 6 (correlated to Subboreal/Subatlantic – f, g, h)

This pollen zone is marked by a general decline of tree pollen while ruderal-anthropogenic herb frequencies reach their highest values. This period (corresponding to the onset of event “f”) corresponds to a regression of fir forests and consecutive expansion of *Fagus*, a competitive tree, together with *Picea*. The expansion of beech characterizes the onset of the Subboreal in the Alps (dated between 6800 and 5700 cal. BP, Magri, 2008). In the Southern Alps, continuous low values of *Fagus* are dated at 6630–6310 cal. BP at Long Inférieur (De Beaulieu, 1977), at 6980–6300 cal. BP at Plan du Laus (De Beaulieu, 1977), at 6270–5750 cal. BP at Saint Léger (Digerfeldt et al., 1997), and at 6470–6210 cal. BP at Lauzons (Ponel et al., 2011).

The transition between the Subboreal and the Subatlantic is classically based on the *Juglans* line, i.e., the first regular occurrences of *Juglans* in the Southern Alps (De Beaulieu, 1977). *Juglans* disappeared from Europe during or before the last glaciation, and spread from Middle East refuges (Zohary and Hopf, 2000; Conedera et al., 2004) and into Southern Europe (Carrion and Sanchez-Gomez, 1992) during the Holocene. According to Beug (1975), *Juglans* is considered in the Mediterranean area as a domesticated tree, cultivated during the Gallo-Roman period in Southern Europe. As suggested by Bottema (1980), the appearance of *Juglans* might have been asynchronous in Europe, partly determined by distance from refuges. Therefore, several authors have proposed that walnut might have been present earlier than assumed in Spain (Lopez-Garcia and Lopez-Saez, 2000) and in the Italian peninsula before Roman times (Mercuri et al., 2013). However, again according to Mercuri et al. (2013), the concomitant increase in *Olea*, *Juglans* and *Castanea* frequencies (named the OJC group) has been favoured by intensification of cultivation during Hellenistic and Roman times. Following this, the OJC Group expansion occurred during the middle Ages in the course of event “h” in Fig. 7 (Mercuri et al., 2013). Lastly, in the Alps, most ages obtained for the “*Juglans* line” confirm that walnut is a relevant indicator of the Roman period at

about 2000 cal. BP (De Beaulieu, 1977; Clerc, 1988; David, 1993; Brugiapaglia, 1996; Ortu, 2002; Court-Picon, 2007). Two very recent studies of Lake Petit (2200 m a.s.l., 30 km distant from Vens) in the Southern Alps have allowed dating the *Juglans* line (event “g”) at 2360–1980 cal. BP and the OJC group expansion in event h at between 1580 and 1350 cal. BP (ADMModel, Brisset et al., 2012, 2013).

### 7.2. Establishing the Lake Vens multiproxy age–depth model

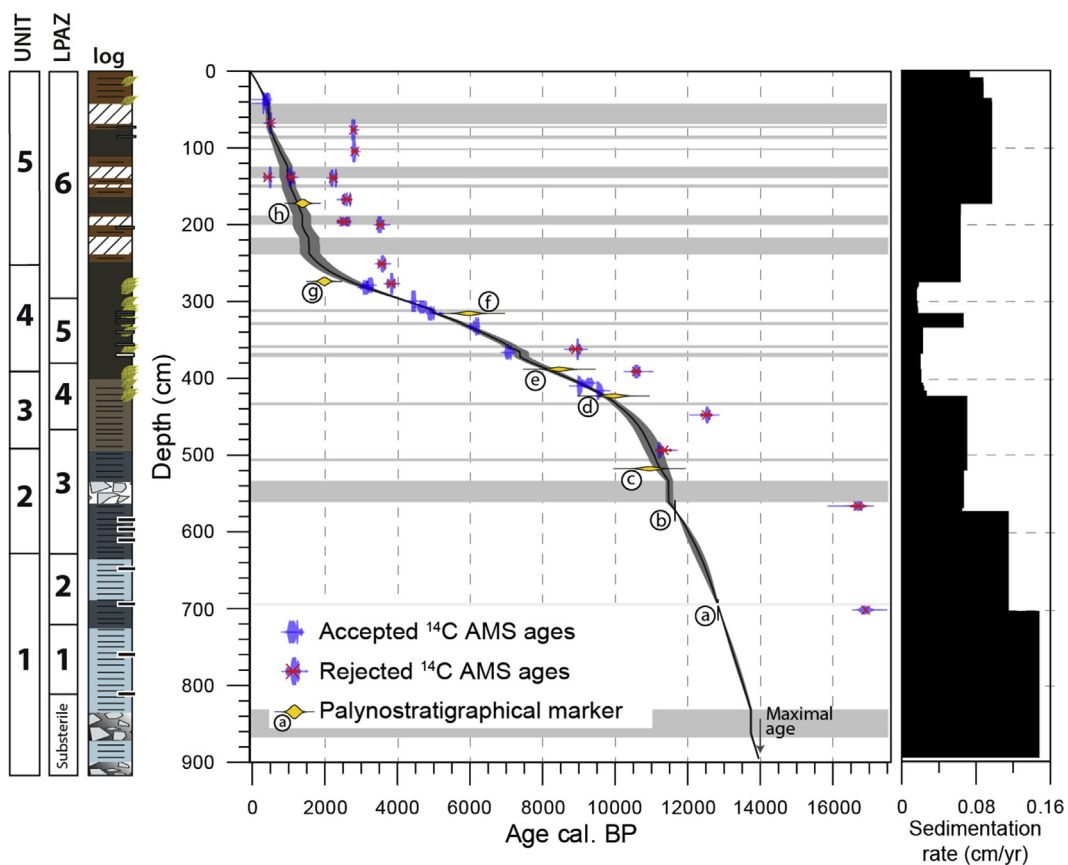
The palynostratigraphical markers defined above provide a constrained chronological framework to compare the  $^{14}\text{C}$  ages of core VEN10-II (Figs. 5–7):

- From 909 to 440 cm: sediment is organic-poor and the  $^{14}\text{C}$  samples at 569 and 705 cm are respectively dated to 16,710–16,190 cal. BP and 17,100–16,550 cal. BP from pollen-concentrated organic matter. These ages are at least 3000 years older than expected from the regional palynostratigraphy, thus indicating that the Lake Vens infilling started during the Alleröd chronozone. Moreover, the pollen stratigraphy (Fig. 7) indicates that the  $^{14}\text{C}$  age at 450 cm dated at 12,430–12,720 cal. BP is inconsistent with the beginning of the Holocene period at 570 cm. These three  $^{14}\text{C}$  ages are, thus, incompatible with the palaeoclimatic event stratigraphy of the INTIMATE group that dated the GI-1c at 13,954 (+30/–10) cal. BP and the GS-1 from 12,896 ± 4 cal. BP to 11,703 ± 4 cal. BP (Blockley et al., 2012). Consequently, the  $^{14}\text{C}$  ages of pollen-concentrated organic matter have been rejected in this depth interval;
- From 500 to 280 cm: most of the  $^{14}\text{C}$  ages are in conformity with the regional palynostratigraphy (10 ages). Wood macrofossils are abundant at these depths and except for three of these samples obviously older and probably reworked from the lake catchment (at depth of 278, 364 and 412 cm), all the  $^{14}\text{C}$  age have been used to construct the age–depth model.
- From 280 to 0 cm: The comparison of the 6  $^{14}\text{C}$  ages from bulk organic matter of pollen size and the palynostratigraphy indicates an offset of 2000 years. Two  $^{14}\text{C}$  ages of undifferentiated plant debris retrieved from reworked deposits are in agreement with the pollen stratigraphy while one might be rejuvenated and the second one might be older. A younger  $^{14}\text{C}$  age might be due to sample contamination as a result of a low carbon concentration in the sample. This plant debris probably originated from older sediments reworked during an erosional phase in the course of these events. The two upper  $^{14}\text{C}$  ages (terrestrial macrofossils from continuous accumulation) are in agreement with the  $^{210}\text{Pb}$  accumulation rate (Petersen et al., 2014) and the regional palynostratigraphy.

The age–depth model is built from 12 accepted  $^{14}\text{C}$  AMS ages and 8 palynostratigraphical markers (Fig. 8). The 2 sigma envelop of the age–depth model encompasses three rejected  $^{14}\text{C}$  ages (two from reworked deposits and one from pollen-concentrated organic matter) which have not been included for model calculation and might consequently be accepted. On the whole, core VEN10-II covers at least the last 13,000 years, with a maximal age at 14,000 cal. BP.

Comparison between the palynostratigraphical results and  $^{14}\text{C}$  ages at Vens has demonstrated a distinct offset.  $^{14}\text{C}$  dating of pollen-concentrated organic matter was conducted in order to compensate for the absence of terrestrial macrofossils. This study shows that these  $^{14}\text{C}$  ages are systematically older than expected.

- In the early stages of lake infilling from 13,000–14,000 cal. BP to 10,000 cal. BP, contamination by old carbon could be due to reworking of (1) old pollen, (2) old soil organic matter, (3) dead



**Fig. 8.** Multi-proxy age–depth model of core VEN10-II computed on the basis of  $^{14}\text{C}$  AMS ages of terrestrial material sampled from the continuous lacustrine sedimentation. These ages are supported by palynostratigraphical interpretations (markers “a”–“h”). Instantaneous deposits (shaded bands) larger than 1 cm were removed before modelling. Three ages rejected a priori are accepted a posteriori (see text for explanations).

carbon from dolomite bedrock and (4) coal particles (Björck and Wohlfarth, 2001). As shown by inter-site comparison of the pollen stratigraphy, the sediment sequence of Vens records the succession of expected biostratigraphical events and thus we suggest that pollen grains are not reworked. The first sign of local steppe vegetation is recorded since the formation of the lake and even if landscapes were probably sparsely vegetated, it can be assumed that soil development (source of old carbon) might have accompanied pine and juniper shrublands. Early development of Podzols in Alpine granitic environments has been dated at  $14,900 \pm 1800$ – $14,300 \pm 2300$  years (Lateglacial Interstadial) and at the end of the YD at ca  $10,700 \pm 900$  and  $8600 \pm 600$  years (Favilli et al., 2009; Egli et al., 2010; Böhlert et al., 2011). The two deepest samples at 705 and 604 cm suffer from residual, black and vitrified, undeterminable particles ( $5$ – $20 \mu\text{m}$ ) which could be associated with wind-dispersed coal particles (Björck and Wohlfarth, 2001) or dead carbon from dolomite bedrock.

- In the third tier of the Holocene from 3000 to 500 cal. BP, the six  $^{14}\text{C}$  ages on pollen-concentrated organic matter samples have an almost unchanging offset of  $\sim 2000$  years ( $1820 \pm 215$  years,  $2\sigma$ ) relative to the age–depth model. Before 3000 cal. BP, the lake catchment was densely forested (optimum values of *Abies* and high pollen concentration), which probably promoted soil development and lower detrital inputs (Mourier et al., 2010; Böhlert et al., 2011). At 3000 cal. BP, a more open landscape characterized by the development of ruderal-anthropogenic meadows (optimum of *Rumex* and *Urtica*) is accompanied of an increase in detrital inputs. Vegetation reversal in response to

increasing anthropogenic pressure in the catchment might have led to soil dismantling providing old refractory organic matter for sedimentation in the lake. Considering that the  $^{14}\text{C}$  result interval of 3800–2100 cal. BP ( $2\sigma$ ) is relatively narrow and coincides with a period of intense anthropogenic pressure, we suggest these ages as illustrating the last stages of soil development in the lake catchment before their dismantling.

### 7.3. The palaeoenvironmental history recorded at Vens

#### 7.3.1. The Lateglacial

**Between  $\sim 14,000$  and  $\sim 13,100$  cal. BP:** the lithotype consisting of light blue fine silts to beige medium silts is characteristic of a depositional environment in the distal position of a proglacial lake (“glacial milk”). Sedimentation rates are maximal ( $0.14 \text{ cm} \cdot \text{a}^{-1}$ ). The sediment is rich in magnetic minerals from the gneissic bedrock. This is the sedimentological expression of erosion and removal of a glacier tongue located upvalley that steadily fed the lake. Non-graded sandy layers occurred repeatedly and could indicate debris flows occurring during high-discharge events. The development of steppe vegetation is not documented in the sediment record which is free of organic matter. Clastic particles were hence deposited under the strong influence of proglacial processes. Our results allow dating the lake formation from the Alleröd. Therefore, the moraine Vens-I was deposited before 14,000 cal. BP, and disconnection of the cirque glacier of Vens from the main tongue of the Tinée valley occurred prior to this date.

**Between ~13,100 and ~12,700 cal. BP:** thick laminations of clay and silt are associated with high values of magnetic susceptibility. Darker laminations indicate a reduction of glacier release during the Alleröd. The presence of an open forest colonising slopes around the lake may have promoted organic matter release. The local glacier probably receded upstream in the cirque, favoured by the warmer conditions of the end of the Alleröd. This phase of glacier retreat and open forest development is interrupted at ~12,700 cal. BP by the re-appearance of light blue laminations interpreted as a lacustrine facies in a proglacial distal position.

**Between ~12,700 and ~12,300 cal. BP,** the vegetation records a strong reversal towards a steppe environment in response to probably colder conditions during the YD event. Rapid vegetation changes together with a higher influence of glaciolacustrine processes might be a signature of glacier tongue advance in the cirque floor probably resulting in the formation of moraine ridges. This phase may be related to the lowermost Vens-II moraine. This could easily explain the reoccurrence of highly minerogenic facies. Alternatively, the two upper moraines, Vens-III and Vens-IV moraines, were also built by short cirque glacier fluctuations during the same cold YD event. Alternatively, and taking into account (1) the relative fresh morphology of the ridges of Vens-III and IV, (2) the foothill position and (3) northerly exposure of the cirque, they may have been constructed later during the Holocene.

### 7.3.2. The Holocene

**Between ~12,300 and ~11,000 cal. BP:** sediment is composed of light blue to brown clay silt laminations. The sharp lowering of magnetic susceptibility values suggests weakening of erosion of the gneissic bedrock, and the increasing water content suggests less massive mud deposition. The sedimentation rate drops from 0.11 to 0.07 cm<sup>o</sup>a<sup>-1</sup>, indicating a lowering of terrigenous inputs. The decrease in glacial erosion probably reflects significant melting and retreat of the glacier or even its demise. Even if the catchment was no longer under glacier influence, the steppe cover and the lack of organic material indicate deposition during the cold conditions of the end of the YD. Such conditions are compatible with the presence of residual ice pack shaping the small-amplitude moraine ridges Vens-III and Vens-IV. The occurrence of an isolated “scree” layer of gneissic material in the lake sediment at ~11,500 cal. BP can be explained by mass wasting of the scree/moraine deposits Vens-I which covered the flanks of Lake Vens.

**Between ~11,000 and 8500 cal. BP:** the sediment is characterized by a progressive increase in water content and organic matter accompanied by darker silty laminations. Leaf tree expansion around the lake, together with the first occurrences of wood macrofossils, attest to the establishment of a riparian forest. A reduction of terrigenous inputs reflects the stabilisation of the catchment slopes.

**Between 8500 and ~1700 cal. BP:** a homogeneous to laminated dark brown diatomite gyttja is deposited. These sediments document an increase in algal organic productivity probably reflecting warmer conditions. This unit is marked by the optimum in abundance of plant remains. The sedimentation rate reaches its lowest values, reflecting the reduction of terrigenous inputs and catchment stabilisation.

**From ~1700 cal. BP to Present:** the recurrence of a laminated facies is marked by an alternation of dark brown gyttja and light beige detrital layers. The sedimentation rate increased to values close to the ante-Holocene period. The plant cover is dominated by ruderal-anthropogenic herbs attesting to the primacy of anthropogenic activities in generating an open landscape. A reduction in the extension of forest might have led to increased soil vulnerability and consequently promoted terrigenous inputs. The occurrence of homogeneous matrix-supported deposits also reflects this

stabilisation (Petersen et al., 2014). Increasing sediment loads on lake slopes probably triggered mass-wasting events.

Since lake formation at ca 14,000 cal. BP, the catchment experienced the last cirque glacier pulsations followed by a general reduction in erosion processes during catchment reforestation. Lastly, an increase in erosion processes consequent to this preceding quiescent phase occurred due to anthropogenic influences. Since the end of the Younger Dryas, the catchment has not experienced cirque glacier tongue advance. Even though residual glaciers/ice-packs might have persisted during the Holocene in restricted foothill areas (Vens-III and IV), they did not influence catchment dynamics.

### 7.4. Time frame and geographical characteristics of the cirque-glacier deglaciation of the Mediterranean Alps

We have built up our analysis on the basis of a corpus of 15 high-elevation lake and mires sediment core studies of the Mediterranean Alps enhanced by the Lake Vens record (Fig. 1B and Supplementary Material). On each site, we examine three independent observations: (1) lithology documenting environmental changes; (2) radiocarbon ages and type of sample material (Table 2); and (3) local pollen assemblage zones (LPAZ) as they were defined by authors. Radiocarbon ages inconsistent with palynostratigraphy were rejected. The synthesis of these data are represented schematically in Fig. 9A and yields new insight into the chronology of deglaciated environments by providing information on: (1) the early stage of lake formation (bottom core dating), (2) phases of the deglaciation of the cirque glacier upvalley, and (3) geographical settings (altitude and ice-free catchment exposure).

#### 7.4.1. An updated chronology of the cirque-glacier deglaciation in the southern Mediterranean Alps

**7.4.1.1. Ice-free high altitude cirques since the onset of the Bölling–Alleröd (GI-1e).** The pollen diagram of Lake Vens attests that at an elevation of 2300 m a.s.l., the lake was ice-free before the onset of the Alleröd, i.e. 14,500 cal. BP (GI-1e, Blockley et al., 2012). Eight additional lakes and mires (Long Inférieur (2090 m) and Orgials (2240 m) in the FMA, Vei del Bouc (2055 m) in the IMA, in Allos (2225 m), Vallon de Provence (2075 m), Terres Plaines (2100 m), Restefond (2400 m) and Vallon du Loup (2010 m) in the UED) provide the same scheme showing that cirques above 2000 m a.s.l. are deglaciated since the Bölling–Alleröd or even since the end of the Oldest Dryas. Lake Long Inférieur provides the oldest relevant <sup>14</sup>C age supporting the chronology of an ice-free lake bottom at 13,740–13,410 cal. BP (2σ). Glacial retreat in uplands is also attested by the <sup>10</sup>Be ages obtained on polished surface samples in the French Maritime Alps (Fer/Rabuons catchments; Darnault et al., 2012), which indicate that cirques were deglaciated at 14,914 ± 809 years (2700–2800 m a.s.l.). Consequently, the moraine ridges situated downstream of the mires and lakes mentioned above must belong to the first part of the Lateglacial period; glacial deposits situated upstream must be related to cooling during the Younger Dryas and the Holocene.

**7.4.1.2. Oldest Dryas glacial remains.** At Vens, the oldest glacial deposits are situated near the lake at 2300 m a.s.l. (Vens-I); downvalley no stage has been found probably because of the steepness of the slopes. These glacial remains could correspond to FMA-I and to one of the two Oldest Dryas stages identified in the UED (UED-I or II). There are no arguments in favour of which one is related to the FMA-I. In the IMA, stage IMA-I identified in Gesso valley could also correspond to the oldest stages of UED (UED-I or II) and FMA-I (Finsinger and Ribolini, 2001). These authors also map moraine at 1700 m a.s.l. (Fig. 2); considering the elevation of these



**Table 2**

Compilation of sediment core studies in the Mediterranean Alps from a) [Brisset et al. \(2014\)](#); b) [Ortu et al. \(2005\)](#); c) [Ortu \(2002\)](#); d) [Kharbouch \(2000\)](#); e) [Richer \(2009\)](#); f) [De Beaulieu \(1977\)](#); g) [Ponel et al. \(2001\)](#); h) [Gandouin and Franquet \(2002\)](#); i) [Brisset et al. \(2012\)](#); j) [Brisset et al. \(2013\)](#); k) [Dijkstra et al. \(1990\)](#); l) [Jorda and de Beaulieu \(1977\)](#); m) [Finsinger and Ribolini \(2001\)](#); n) [Finsinger \(2001\)](#). Site selection is based on a minimal dataset of lithological descriptions and palynological diagrams. A numerical code reference is attributed to each lake refers in [Fig. 1](#) (localisation map). Asterisks indicate unavailable data (material dated and/or  $\delta^{13}\text{C}$ ). Imprecise core correlation of  $^{14}\text{C}$  age is coded "IC". Column remarks are an interpretation on the validity of the  $^{14}\text{C}$  ages: "suspect" means that age is inconsistent with palynostratigraphy of the respective core, "rejected" means that age is discarded. Italics indicate the rejected  $^{14}\text{C}$  ages.

Code	Name and reference	Lat (N)	Long (E)	Altitude (m asl)	Aspect	Sample code	$^{14}\text{C}$ age uncal. BP	Error ( $2\sigma$ )	Min cal. BP ( $2\sigma$ )	Max cal. BP ( $2\sigma$ )	Core depth (cm)	Material	$\delta^{13}\text{C}$	Remark
1	Allos -a	44.13	6.42	2225	N	Poz-50232	615	35	546	658	181	Wood and needles	*	
						Poz-49766	1275	30	1098	1289	250	Needles	*	
						Poz-49767	1645	30	1417	1617	300	Conifer bark	*	
						Poz-49768	1795	30	1622	1818	390	Herbaceous fragments	*	
						Poz-46760	2880	35	2885	3142	498.5	Twig – Salix sp.	*	
						Poz-46759	3060	35	3177	3360	525	Twig – conifer (Larix/Picea)	*	
						Poz-50223	2900	40	2898	3164	556	Twig deciduous tree	*	
						Poz-46758	3895	35	4184	4422	589	Twig of deciduous tree	*	
						Poz-50227	4090	35	4444	4812	605	Charcoal (Gymnosperme)	*	
						Poz-50231	8840	50	9705	10,158	660	Twig – Salix sp.	*	suspect
						Poz-50224	5570	40	6291	6434	685	Twigs undiff	*	
						Poz-50222	6040	40	6784	6996	708	Twig of deciduous tree	*	
						Poz-50228	6660	40	7461	7594	743	Herbaceous fragments	*	
						Poz-50229	7670	50	8385	8552	807	Twig of deciduous tree	*	
						Poz-50221	8090	80	8663	9274	832	Bark of conifer and twig	*	
						Poz-46762	8050	50	8725	9090	865.5	Twig of deciduous tree	*	
						Poz-50225	8820	50	9686	10,155	963	Twig undiff	*	
Poz-46757	9380	50	10,442	10,734	1038	Herbaceous fragment	*							
Poz-49768	8930	50	9904	10,214	1140	Vegetal debris undiff	*	suspect						
9	Fate -b,c	44.14	7.05	2130	E	Ly1597	6480	100	7179	7572	133	Alnus sp.	-28.03	
						Ly1596	8850	60	9704	10,172	141	Salix sp.	28.45	
						Ly1595	9300	60	10,283	10,658	171	Salix sp.	-27.92	
						Ly1594	9660	60	10,779	11,205	214	Salix sp.	*	
15	Grenouilles -d	44.05	7.29	1990	SE	Gif-10370	1720	40	1545	1715	80	Peat	-26.75	
						Gif-10371	4700	60	5316	5583	170	Peat	-25.88	
2	Lauzanier -e	44.22	6.52	2310	N	Poz-18882	2660	35	2744	2844	31	Peat	*	
						Poz-18884	3655	35	3886	4087	54	Wood	*	
7	Long Inférieur -f,g,h	44.03	7.27	2090	E	Poz-18883	9460	50	10,567	11,068	79	Bulk sediment (gyttja)	*	
						Poz-18885	12,180	60	13,835	14,241	116	Bulk sediment (clay)	*	suspect
7	Long Inférieur -f,g,h	44.03	7.27	2090	E	Ly1244	2660	190	2322	3321	IC	*	*	
						Ly1243	3740	160	3643	4528	IC	*	*	
						Ly1242	4770	300	4651	6205	IC	*	*	
						Ly1241	5670	170	6023	6887	IC	*	*	
						AA_36512	5678	50	6321	6628	138	Bulk sediment (gyttja)	-25.4	
						AA_36513	8087	58	8772	9246	290	Bulk sediment (gyttja)	-24.6	
						AA_36514	8692	53	9540	9886	328	Bulk sediment (gyttja)	-25	
						AA_36515	8801	54	9627	10,152	358	Bulk sediment (gyttja)	-24.6	
						Ly1207	10,430	210	11,410	12,724	IC	*	*	
						AA_36516	10,892	80	12,685	12,977	482	Bulk sediment	-22.4	
						Ly1206	10,970	210	12,435	13,281	IC	*	*	
						AA_36517	11,263	82	12,977	13,299	488	Bulk sediment (clay)	-21.3	
						AA_36518	11,720	79	13,413	13,741	511	Bulk sediment (clay)	-20.3	
						Ly1205	12,040	370	13,166	15,184	IC	*	*	suspect
						Ly1237	12,170	280	13,473	15,115	IC	*	*	suspect
						Ly1236	12,510	370	13,619	15,847	IC	*	*	suspect
						Ly1235	13,460	410	15,015	17,477	IC	*	*	suspect
AA_36519	14,190	130	16,860	17,635	558	Bulk sediment (clay)	-16.7	suspect						
14	Mouton -f	44.03	7.26	2175	E	Ly1247	3000	160	2784	3555	60	*	*	
						Ly1248	8220	200	8609	9540	115	*	*	
						Ly1249	7930	170	8409	9254	125	*	*	
						Ly1246	9340	240	9917	11,230	205	*	*	
						Ly1599	1875	35	1719	1885	59	Vegetal debris	-28.26	
8	Orgials -b,c	44.12	7.08	2240	SW	Poz-7107	4670	35	5314	5571	142	Bulk sediment (gyttja)	*	
						Poz-7108	7820	40	8479	8721	234	Bulk sediment (gyttja)	*	
						Ly1611	9783	68	10,874	11,349	359	Bryophyts	*	
						Ly1598	20,930	130	24,850	25,631	406	Bryophyts	*	suspect
16	Petit -i,j	44.06	7.11	2225	S	Poz-32578	1240	40	1069	1271	26	Terrestrial debris	*	
						Poz-39213	1720	30	1559	1702	39	Wood – Larix	*	
						Poz-355509	1890	30	1735	1893	58	Wood – Conifer	*	
						Poz-32576	3620	40	3835	4080	94	Terrestrial debris	*	
						Poz-35507	3855	35	4156	4410	111	Bark – Conifer	*	
						Poz-39212	4125	35	4528	4820	135	Twig – Ericaceae	*	
Poz-32577	4110	35	4455	4818	137	Twigs fragments	*							
4	Restefond -k	44.19	6.47	2400	SW									
11	Rifugo Mondovi -b,c	44.11	7.44	1760	S	Ly1606	965	45	785	960	140	Peat	-29.5	
						Ly1607	1825	50	1620	1875	210	Peat	-27.35	

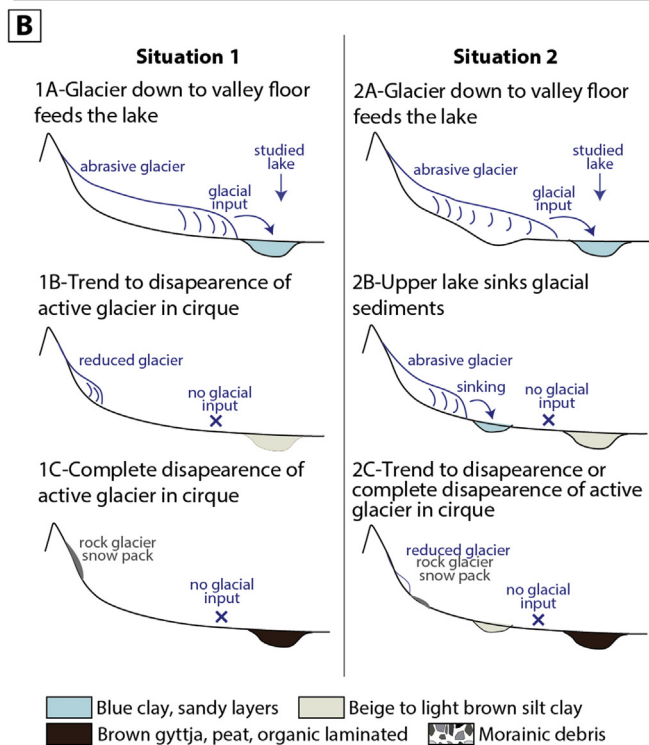
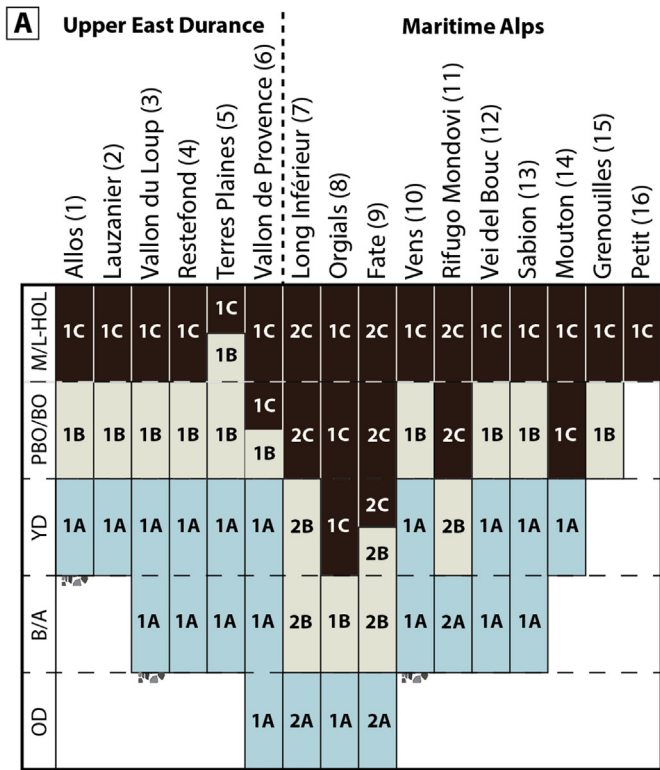
Table 2 (continued)

Code	Name and reference	Lat (N)	Long (E)	Altitude (m asl)	Aspect	Sample code	<sup>14</sup> C age uncal. BP	Error (2σ)	Min cal. BP (2σ)	Max cal. BP (2σ)	Core depth (cm)	Material	δ <sup>13</sup> C	Remark
						Ly10757	1965	55	1741	2060	260	Peat	-28.68	
						Ly10758	2575	60	2442	2837	290	Peat	-28.67	
						Ly10759	5725	90	6315	6718	370	Peat	-28.02	
						Ly1608	9790	60	11,094	11,327	390	Peat	-28.99	
13	Sabion -f	44.07	7.28	2215	S	Ly1145	10,380	400	10,870	13,063	245	*	*	suspect
						Ly1146	9340	450	9475	12,005	255	*	*	
5	Terres Plaines -k	44.2	6.45	2100	N									
6	Vallon de Provence -l	44.23	6.24	2075	NE	Ly731	9900	90	11,179	11,709	435	*	*	
						Ly730	11,510	140	13,074	13,592	470	*	*	
3	Vallon du Loup -l	44.24	6.24	2010	NE									
12	Vei del Bouc -m,n	44.08	7.25	2055	N	Ua-16175	5745	90	6321	6739	161	Salix sp.	-26.4	
						Ua-16176	7525	90	8169	8536	171	Pinus cembra	-24	
10	Vens -this study	44.18	6.56	2330	NW	SacA-31217	355	45	312	498	37	Coleoptera	-12.3	
						SacA-28193	300	30	296	460	42	Leaf	-28.5	
						SacA-22282	470	30	494	540	68	Vegetal debris undiff (VEN09P3)	-25.1	suspect
						SacA-31697	2700	35	2753	2859	77	Pollen extract	-28.8	rejected
						SacA-31719	2735	30	2763	2917	105	Pollen extract	-27.9	rejected
						SacA-22283	435	30	338	531	139	Vegetal debris undiff (VEN09P3)	-26	rejected
						Poz-34153	1155	30	982	1175	139	Vegetal debris undiff (VEN09P3)	*	suspect
						SacA-31720	2250	35	2154	2345	140	Coleoptera and pollen extract	-27.2	rejected
						Poz-48423	2525	35	2490	2745	168	Pollen extract	*	rejected
						SacA-22284	2470	30	2380	2717	197	Vegetal debris undiff (VEN09P3)	-25.1	rejected
						Poz-48424	3315	35	3458	3632	201	Pollen extract	*	rejected
						Poz-48425	3370	40	3482	3700	252	Coleoptera and pollen extract	*	rejected
						SacA-31721	3565	30	3726	3968	278	Twig of conifer	-32	rejected
						Poz-40617	3040	35	3157	3358	280	Scale – Conifer undiff	*	
						SacA-31722	2960	30	3005	3211	283	Scale – Conifer undiff	-27.6	
						SacA-28194	3990	30	4415	4523	301	Needle – Abies sp.	-24.5	
						SacA-28195	4165	30	4583	4829	309	scale – Conifer undiff	-25.7	
						Poz-48426	4390	35	4859	5210	317	Twig – Pinus sp.	*	
						SacA-28196	5380	35	6017	6282	334	Charcoal of wood	-21.5	
						SacA-28197	8080	40	8781	9127	364	Twig – Alnus sp.	-24	rejected
						SacA-31723	6200	35	6997	7240	368	Twig – Alnus sp.	-28.3	
						Poz-40618	9410	50	10,512	10,755	393	Wood of Betula sp.	*	rejected
						SacA-28198	8295	50	9130	9438	408	Twig – Conifer undiff	-20	
						SacA-28199	8135	35	8999	9241	412	Twig – Alnus sp.	-27.3	
						Poz-40619	8660	40	9539	9696	418	Wood – Salix sp.	*	
						SacA-31724	10,660	70	12,434	12,724	450	Pollen extract	-30.1	rejected
						SacA-31725	9900	50	11,208	11,599	496	Pollen extract	-31.8	suspect
						SacA-31726	13,630	70	16,188	16,712	569	Pollen extract	-28.6	rejected
						SacA-28200	13,900	70	16,548	17,102	705	Pollen extract	-26.4	rejected

glacial deposits, we suppose that they could be remnants of UED-I. Slight discrepancies between elevation and the corresponding  $\delta$ ELA of these stages through the Mediterranean Alps could be attributed to particular geomorphological and topography-influenced climate conditions and to the different methods used (Höfer method in UED and FMA and the Balance ratio method in IMA). Overall, these oldest Lateglacial stages can be considered as short glacier stagnations or moderate re-advances in a general and rapid melting since the LGM. These stages correspond obviously to minor cooling occurring during the GS-2a period after the glacial maximum dated at 20,000–23,000 cal. BP (GS-2b period). Following Jorda and Rosique (1994), this review emphasizes the rapidity of glacial retreat from the near maximal extension of glacial tongues downstream in the valley to the upper cirques above 2000 or 2300 m a.s.l. before 14,500 cal. BP, in less than 7 millennia. This time interval may be shorter in the IMA in the Gesso valley where Federici et al. (2012) have recently provided a <sup>10</sup>Be age ranging from 16,590 ± 970 to 18,200 ± 1060 years from the Gschnitz stadial of the Alpine Lateglacial chronology, associated with Heinrich Event 1 from a frontal moraine ridge situated at 850 m a.s.l. Therefore, in this valley, the moraine ridge IMA-I, located at 2050 m a.s.l. under the mire of Vei del Bouc, must have been built during the very end of the GS-2a period.

7.4.1.3. *Younger Dryas and Holocene glacial deposits and major environmental changes recorded by sediment cores.* The moraine ridges located above the studied lakes must be related to a cooling period younger than the Bölling–Alleröd. It is highly probable that the glacial deposits situated immediately above the lakes correspond to the major cooling occurring after the GI-1a, which is the Younger Dryas. Upvalley, moraine ridges and glacial rocks must be Holocene. This assumption can be comforted by observing lacustrine sediment facies which inform on environmental changes, timing of melting and strength of glacial processes. Fig. 9 shows a simplified lithostratigraphical core description from the 16 representative lakes in the Mediterranean Alps. The sediment cores show three lithotype successions since the Lateglacial.

Lake infilling starts by accumulation of an organic-poor blue clay lithotype (Fig. 9A) often interrupted by sandy layers, characteristic of glacial activity in lake catchments (Fig. 9B, situation 1). At Vens, as in most of the studied lakes of the FMA, IMA and UED, the deposition of a blue clay lithotype covers the Bölling and stops at the end of the YD. These glacio-lacustrine processes could be related with the moraine ridges of Vens-2, FMA-II, IMA-II and UED-III ( $\delta$ ELA ranging between 350 and 600 m). At Vens, the reduced  $\delta$ ELA of this moraine ridge is probably due to the very small size of the catchment (4 km<sup>2</sup>). NGRIP reconstructions (Rasmussen et al.,



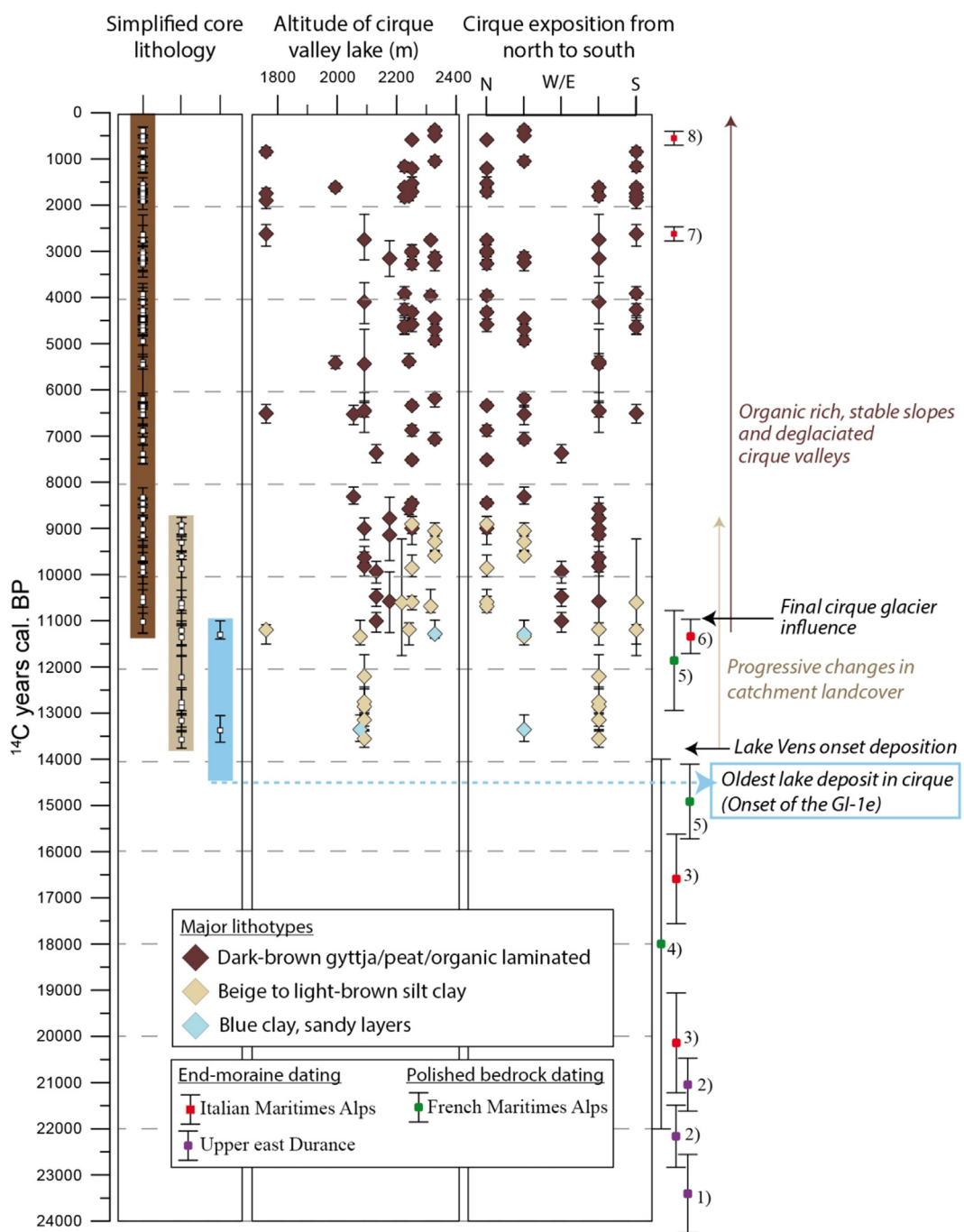
2008) suggest minor cooling (GI-1d and GI-1b) during the generally warmer period of the Bölling–Alleröd which could have locally maintained the strong influence of glacier processes until the major cooling event of the YD (GS-1) responsible for the formation of moraine ridges.

The blue clay lithotype is overlain by a beige to light brown lithotype, mainly composed of silt–clay and rarely interrupted by sandy layers, indicating progressive increase in organic matter. This reflects vegetation colonisation and soil development at these altitudes attended by stabilisation of slopes. This phase is constrained by the  $^{14}\text{C}$  age corpus between 13,500 and 8700 cal. BP. In four lakes (Rifugio Mondovi, Long Inférieur, Fate and Orgials), all located in the Maritime Alps, the accumulation of the blue clay lithotype ends earlier than in the other lakes, and the YD cooling, expressed in all pollen diagrams by the sharp increase in cold steppe herbs, is recorded during deposition of the beige/light brown lithotype. We might suppose that this delay is due to the southern position of the Maritime Alps: warming conditions during the Lateglacial might have been more pronounced than in the northern Alps, explaining lower glacier influence on sediment cores. Moreover, local geomorphological settings could have influenced lacustrine sedimentation. For example, in case of Long Inférieur, Fate and Rifugio Mondovi, the lakes were probably disconnected to direct melting water from the YD glacier and higher lakes could have played a role in buffering sediment supply downstream (Fig. 9B, situation 2).

In all of the 16 lake sequences, light brown deposits are overlain by the dark brown lithotype associated with organic-rich (algal and/or terrestrial) sediment. Persistence of this lithotype toward the top of all cores reflects conditions of non-glaciated catchments throughout the Mid-to Late-Holocene (Fig. 9A and B). The dataset allows constraining of this phase from 11,500 cal. BP to Present, which is supported by the dozen  $^{14}\text{C}$  ages encompassing the Holocene period (Table 2). The moraine ridges located above 2400 m (Vens–III–IV, FMA–III–IV, IMA–III and UED–IV–VI), corresponding to a  $\delta\text{ELA}$  lower than 350 m, attributed to the Holocene period (to the LIA for the youngest), correspond to glacier readvance that was not sufficient to interrupt the organic-rich sedimentation. These results plead in favour of a debris cover of restricted extent and poorly erosive glaciers during the Late Holocene.

**7.4.1.4. Influence of the geographical situation.** The datasets have been investigated in terms of geographical settings of major environmental changes in the Mediterranean Alps during the Lateglacial and the Holocene. The classification of lithological information according to altitude is presented in Fig. 10. The insufficient number of  $^{14}\text{C}$  ages obtained in the blue clay lithotype does not allow for interpretation in terms of altitude. A more significant criterion could be the distribution of the  $^{14}\text{C}$  ages corresponding to the beige to light brown lithotype. The onset of this lithotype occurs 2000 years earlier at an altitude of 2090 m a.s.l. (13,500 cal. BP) at Long Inférieur) compared to Lake Allos at 2250 m a.s.l. (10,600 cal. BP). A similar pattern may be noticed for the beginning of the dark brown organic-rich lithotype which appears ca 2000 years earlier at a site located below 2200 m a.s.l. (11,000 cal. BP), than in lakes located between 2200 and 2400 m a.s.l. (9000 cal. BP). Therefore, even if the datasets provide an incomplete image of the numerous small catchments of the area, the effect of the altitudinal factor on the timing of major environmental changes might be interpreted, characterized by a time lag of roughly 2000 years depending on whether catchments are located below or above 2200 m a.s.l. Fig. 10 presents a sorting of lithological information according to cirque exposure. Lake catchment exposure seems to have an effect on the timing of the onset of the beige to light brown lithotype, as well as on the onset of the dark brown organic-rich lithotype. The onset of

**Fig. 9.** (A) Lithotypes and pollen stratigraphy of lake and mire sediment cores from the Mediterranean Alps (details of individual cores are given in Table 2) and interpretation of lithotype deposition (from 1A to 1C and from 2A to 2C). (B) Interpretation of lithotypes depends on the geomorphological setting which comprises two different situations. OD: Oldest Dryas, B/A: Bölling–Alleröd, YD: Younger Dryas, PBO/BO: Preboreal/Boreal, M/L HOL: Mid-to Late-Holocene.



**Fig. 10.** Synthesis of the  $^{14}\text{C}$  ages obtained from sediment cores located in cirque valley floors in the Mediterranean Alps grouped according to lithology of sediment core, exposure of cirque catchment and altitude of lake. Mean calibrated radiocarbon ages are indicated by white squares and according to their 2 sigma interval (error bars). Diamond colours class lithology at the sampled depth in the original core. On the right side of the panel, main sediment core interpretations are in italics. Timing of environmental changes inferred from sediment cores is compared to the ages of end-moraine and polished bedrock dated by  $^{10}\text{Be}$  and  $^{14}\text{C}$  methods from 1) Jorda (1988); 2) Jorda et al. (2000); 3) Federici et al. (2012); 4) Bigot-Cormier et al. (2005); 5) Darnault et al. (2012); 6) Federici et al. (2008); 7) Ribolini et al. (2007); 8) Federici and Stefanini (2001). (For interpretation of the references to colour in this figure legend, the reader is referred to the web version of this article.)

these units appears delayed by ca 2000 years in north-facing catchments comparing to south-facing ones.

#### 7.4.2. A similar scheme of glacier decay over the Alps

The main steps in the deglaciation scheme in the Mediterranean Alps present similarities with those in the northern Alps where the rapidity of glacial retreat following the LGM extension is also shown. Even if the age of the LGM in the northern Alps is still a

matter of debate (MIS-4 or MIS-2; Guiter et al., 2005; Preusser et al., 2006), the onset of lowland deglaciation is almost synchronous and has been dated for the Rhône Glacier at  $20,900 \pm 1500$   $^{10}\text{Be}$  years (Ivy-Ochs et al., 2008), at  $20,800 \pm 1500$   $^{10}\text{Be}$  years in northwest Italy (Gianotti et al., 2008), by both radiocarbon and OSL between 19,000–18,000 cal. BP in eastern Alps (Klasen et al., 2007), by radiocarbon exclusively at 24,000–21,000 cal. BP (Monegato et al., 2007) and at 17,200–17,700 cal. BP (Ravazzi et al., 2014) in

northeast Italy, at 21,000 cal. BP in the Italian Apennines (Giraudi and Frezzotti, 1997), and at 18,000–17,000 cal. BP in the northern Switzerland (Reitner, 2007). Since the northern Alps experienced a cirque glacier phase that started during the Bölling (Van Husen, 1997; Ohlendorf, 1998), these data plead for a rapid decay of the ice body at the end of the last glaciation in the Alps (Ivy-Ochs et al., 2008) as well in the Mediterranean Alps.

Consecutive to lake formation, the deglaciation of cirque glaciers in the Mediterranean Alps is interrupted by modest re-advances (Giraudi and Frezzotti, 1997) and the lowest moraine is probably related to the YD. Glacial forms of the YD are abundant in the Alpine chain (Egesen stadial) and exposure ages are consistent, giving ages comprised between 12,300 and 10,800 <sup>10</sup>Be years (Kelly et al., 2004; Federici et al., 2008; Hormes et al., 2008; Ivy-Ochs et al., 2009; Cossart et al., 2012; Darnault et al., 2012). In each case, glacier advance during the YD exclusively affects upper catchments. On the basis of difference in equilibrium line altitude between the YD moraines, Federici et al. (2008) suggest that humid conditions comparable to those on the northern slopes of the Alps (Kerschner and Ivy-Ochs, 2008) prevailed in Mediterranean Maritime Alps.

The onset of increase in the organic-rich unit is also recognised in sediment cores of numerous high-altitude lakes in the Alps (Koinig et al., 2003; Mourier et al., 2010; Giguët-Covex et al., 2011; Thevenon et al., 2012). This gyttja facies is always associated with afforestation of cirque catchments (e.g., Ponel et al., 2001; Finsinger and Tinner, 2007), timberline increase (Nicolussi et al., 2005) and soil development (Favilli et al., 2009; Böhlert et al., 2011). Organic-rich sediment dominates lake infilling since ca 11,000 cal. BP in the Mediterranean Alps whereas the onset of this facies is dated between 10,000 and 9000 cal. BP in the northern and eastern Alps. In the northern Alps, short glacier re-advances occurred at 11,500 and 10,000 <sup>10</sup>Be years (Ivy-Ochs et al., 2009). Even if regional comparisons of the timing of the onset of sedimentation are speculative due to the prerequisite of larger-scale sediment core syntheses, we propose that the imprint of glaciers during the Preboreal oscillation might have been more important – and possibly colder – in the northern Alps (especially in north-facing catchments), thus explaining the time lag of ca 1000 years between the Southern and Northern Alps.

During the Mid-to Late-Holocene, glacier advances smaller than those than prior to 10,000 cal. BP are observed in the northern Alps (Joerin et al., 2008; Goehring et al., 2012). Even if mass balance was positive to maintain small glaciers, Ivy-Ochs et al. (2009) suggest there were no time windows long enough to permit their development. This could explain the continuous organic-rich facies observed in lake sediments of the Mediterranean Alps over this period. Nevertheless, even if rock glacier activities in the Mediterranean Alps are recorded at 2720–2360 cal. BP and then during the Little Ice Age (Federici and Stefanini, 2001; Ribolini et al., 2007), which denotes similarities to the glacial record of the northern Alps (Ivy-Ochs et al., 2009), they did not induce change in sediment facies. Hence, we suggest that although a shift to climatic conditions more favourable to glacier formation (generally colder, and less frequent warm periods) may have occurred, this was not sufficient to induce a reversal in the overall ecosystem expansion in the Mediterranean Alps initiated 10,000 years ago. More so than climatic change, anthropogenic pressure is probably the main driver of ecosystem destabilisation during the Holocene. This is underlined by the concomitance between the increase in anthropogenic pressure and that of sedimentation rate recorded in Lake Vens over the last 1800 years, whereas intense rock glacier activity attesting to a cooling trend was detected 500–1000 years before in the neighbouring valley (Ribolini et al., 2007).

## 8. Conclusion

A corpus of sedimentological, palynological and chronological data from 16 lake sediment sequences occupying high-altitude cirques in the Mediterranean Alps provides a maximum age of 14,500 cal. BP for glacier tongue retreat above 2000 m a.s.l based on palynostratigraphical events. The first relevant <sup>14</sup>C age supporting independently the chronology of an ice-free lake bottom is age of 13,740–13,410 cal. BP. Thus deglaciation of the main valley tongues occurred before the Bölling interstadial (GI-1e).

The compilation of sediment cores indicates three units, starting, from bottom to top, by organic-poor blue clay, beige to light brown silt clay and a dark brown and organic-rich lithotype. The review is supported by analyses of the Lake Vens sequence, which offers a good example of these major lithotype alternations. The last stages of domination of glacier processes are evidenced by a lithotype transition from blue clay to beige silt at the end of the Younger Dryas chronozone. Thus, the Younger Dryas glacier advance did not attain the altitude of lakes situated in the French Maritime Alps, stage II in the French Maritime Alps (FMA-II) and stage III in the Upper Eastern Durance (UED-III) are attributed to this phase. The Younger Dryas stadial in the Mediterranean Alps is consistent with the Egesen stadial of the northern Alps.

Progressive increase in organic matter in sediment cores suggests stabilisation of slopes during broadleaved tree afforestation and soil formation during the Preboreal. From 13,000 to 8700 cal. BP, changes in lake sediment are signs of a declining influence of glacial processes and the progressive dominance of biogenic processes. The onset of dark brown and organic-rich sediment deposition at ca 11,500 cal. BP takes place during the Holocene climatic optimum. An altitudinal and an exposure gradient could explain the time lag of ~2000 years for the onset of the major environmental changes.

Our synthesis provides an indirect record of the final stages of glacier activity in the cirque. Lake sediments offer a large corpus of data, often composed of sedimentological descriptions, palynological diagrams and <sup>14</sup>C ages. Even if radiocarbon ages need to be examined with caution, these multiproxy analyses are valuable as independent arguments regarding the chronology and dynamics of palaeoenvironmental changes. Multi-proxy investigations of direct (absolute dating of frontal moraines) and indirect archives (sediment cores), with a more representative geographic coverage, would probably offer perspectives for clearly elucidating the relationships between major climatic events, glacier fluctuations and environmental responses.

## Acknowledgement

Coring of Lake Vens was rendered possible with the help of the C2FN structure, Geoazur internal BQR, B. Wilhelm, Y. Rolland and R. Darnault and the refuge of Vens. We thank T. Kasper, M. Magny, J. Petersen and two anonymous reviewers for stimulating discussions and advice in improving our manuscript. Radiocarbon ages were obtained through the Artemis French AMS <sup>14</sup>C dating Programme and the Poznan Radiocarbon Laboratory. Pollen analyses were funded by the Research Federation ECCOREV. Consultation of original pollen data was rendered possible by the European Pollen Database (M. Leydet). The PhD thesis of E. Brisset has been funded by the Région PACA (France).

## Appendix A. Supplementary data

Supplementary data related to this article can be found at <http://dx.doi.org/10.1016/j.quascirev.2014.12.004>.

- Alley, R.B., Marotzke, J., Nordhaus, W.D., Overpeck, J.T., Peteet, D.M., Pielke, R.A., Pierrehumbert, R.T., Rhines, P.B., Stocker, T.F., Talley, L.D., Wallace, J.M., 2003. Abrupt climate change. *Science* 299, 2005–2010. <http://dx.doi.org/10.1126/science.1081056>.
- Ammann, B., Birks, H.H., Walanus, A., Wasylkowiak, K., 2007. Plant macrofossil records | late glacial multidisciplinary studies. In: Elias, Scott A. (Ed.), *Encyclopedia of Quaternary Science*. Elsevier, Oxford, pp. 2475–2486. <http://www.sciencedirect.com/science/article/pii/B00444527478002234>.
- Begin, J., 1990. Contexte géologique et géomorphologique de la région du Mont Bègo. Répartition des gravures rupestres de l'Age du Bronze dans le site. (Unpublished thesis), Mus. d'Hist Nat.
- Bennett, K.D., 1996. Determination of the number of zones in a biostratigraphical sequence. *New Phytol.* 132, 155–170. <http://dx.doi.org/10.1111/j.1469-8137.1996.tb04521.x>.
- Beug, H.J., 1975. Mas as a factor in the vegetational history of the Balkan peninsula. *Probl. Balkan Flora a. Vegetation*, pp. 72–77.
- Bigot-Cormier, F., Braucher, R., Bourlès, D., Guglielmi, Y., Dubar, M., Stéphan, J.-F., 2005. Chronological constraints on processes leading to large active landslides. *Earth Planet. Sci. Lett.* 235, 141–150. <http://dx.doi.org/10.1016/j.epsl.2005.03.012>.
- Birks, H.J.B., Line, J.M., 1992. The use of rarefaction analysis for estimating palynological richness from quaternary pollen-analytical data. *Holocene* 2, 1–10. <http://dx.doi.org/10.1177/095968369200200101>.
- Björck, S., Wohlfarth, B., 2001. 14C chronostratigraphic techniques in paleolimnology. In: Last, Smol (Eds.), *Tracking Environmental Change Using Lake Sediments*, pp. 205–282.
- Blaauw, M., 2010. Methods and code for “classical” age-modelling of radiocarbon sequences. *Quat. Geochronol.* 5, 512–518. <http://dx.doi.org/10.1016/j.quageo.2010.01.002>.
- Blockley, S.P.E., Lane, C.S., Hardiman, M., Rasmussen, S.O., Seierstad, I.K., Steffensen, J.P., Svensson, A., Lotter, A.F., Turney, C.S.M., Bronk Ramsey, C., 2012. Synchronisation of palaeoenvironmental records over the last 60,000 years, and an extended INTIMATE event stratigraphy to 48,000 b2k. *Quat. Sci. Rev.* 36, 2–10. <http://dx.doi.org/10.1016/j.quascirev.2011.09.017>.
- Böhlert, R., Mirabella, A., Plötze, M., Egli, M., 2011. Landscape evolution in Val Mulix, eastern Swiss Alps – soil chemical and mineralogical analyses as age proxies. *CATENA* 87, 313–325. <http://dx.doi.org/10.1016/j.catena.2011.06.013>.
- Bottema, S., 1980. On the history of the walnut (*Juglans regia* L.) in southeastern Europe. *Acta bot. neerl.* 343–349.
- Brisset, E., Guiter, F., Miramont, C., Delhon, C., Arnaud, F., Disnar, J.-R., Poulénard, J., Anthony, E., Meunier, J.-D., Wilhelm, B., Pailles, C., 2012. Approche multidisciplinaire d'une séquence lacustre holocène dans les Alpes du sud au Lac Petit (Mercantour, alt. 2 200 m, France): histoire d'un géosystème dégradé. *Quat. Rev. l'Assoc. fr. l'étude Quat.* 23, 309–319. <http://dx.doi.org/10.4000/quaternaire.6390>.
- Brisset, E., Miramont, C., Guiter, F., Anthony, E.J., Tachikawa, K., Poulénard, J., et al., 2013. Non-reversible geosystem destabilisation at 4200 cal. BP: sedimentological, geochemical and botanical markers of soil erosion recorded in a Mediterranean alpine lake. *Holocene* 23 (12), 1863–1874. <http://dx.doi.org/10.1177/0959683613508158>.
- Brisset, E., Miramont, C., Guiter, F., Arnaud, F., Anthony, E., Delhon, C., Guibal, F., Cartier, R., Poher, Y., Chaumillon, E., 2014. Données nouvelles sur la chronologie de la déglaciation dans la vallée du Haut Verdon (Lac d'Allos, Alpes Françaises du Sud). *Quaternaire* 25 (2), 145–153. <http://quaternaire.revues.org/7028>.
- Brugiapaglia, E., 1996. Dynamique de la végétation Tardiglaciaire et Holocène dans les Alpes italiennes nord-occidentales (PhD thesis). Aix-Marseille Université III.
- Carrion, J.S., Sanchez-Gomez, P., 1992. Palynological data in support of the survival of Walnut (*Juglans regia* L.) in the western mediterranean area during last glacial times. *J. Biogeogr.* 19, 623. <http://dx.doi.org/10.2307/2845705>.
- Clerc, J., 1988. Recherches pollenanalytiques sur la paléocologie tardiglaciaire et holocène du Bas-Dauphiné. Aix-Marseille Université III.
- Conedera, M., Krebs, P., Tinner, W., Pradella, M., Torriani, D., 2004. The cultivation of *Castanea sativa* (Mill.) in Europe, from its origin to its diffusion on a continental scale. *Veg. Hist. Archaeobot.* 13, 161–179. <http://dx.doi.org/10.1007/s00334-004-0038-7>.
- Cossart, E., Fort, M., Bourlès, D., Braucher, R., Perrier, R., Siame, L., 2012. Deglaciation pattern during the Lateglacial/Holocene transition in the southern French Alps. Chronological data and geographical reconstruction from the Clarée Valley (upper Durance catchment, southeastern France). *Palaeogeogr. Palaeoclimatol. Palaeoecol.* 315–316, 109–123.
- Court-Picon, M., 2007. *Mise en place du paysage dans un milieu de moyenne et haute moyenne du tardiglaciaire à l'époque actuelle* (PhD thesis). Université de France-Comté.
- Darnault, R., Rolland, Y., Braucher, R., Bourlès, D., Revel, M., Sanchez, G., Bouissou, S., 2012. Timing of the last deglaciation revealed by receding glaciers at the Alpine-scale: impact on mountain geomorphology. *Quat. Sci. Rev.* 31, 127–142. <http://dx.doi.org/10.1016/j.quascirev.2011.10.019>.
- David, F., 1993. *Evolution de la limite supérieure des arbres dans les Alpes françaises du Nord depuis la fin des temps glaciaires* (PhD thesis). Aix-Marseille Université III.
- David, F., Farjanel, G., Jolly, M.P., 2001. Palyno- and chronostratigraphy of a long sequence from Lac d'Annecy (northern outer Alps, France). *J. Paleolimnol.* 25, 259–269. <http://dx.doi.org/10.1023/A:1008142810171>.
- De Beaulieu, J.-L., 1977. *Contribution pollenanalytique à l'histoire tardiglaciaire et Holocène de la végétation des Alpes méridionales françaises* (PhD thesis). Aix-Marseille Université.
- Digerfeldt, G., de Beaulieu, J.-L., Guiot, J., Mouthon, J., 1997. Reconstruction and paleoclimatic interpretation of Holocene lake-level changes in Lac de Saint-Léger, Haute-Provence, southeast France. *Palaeogeogr. Palaeoclimatol. Palaeoecol.* 136, 231–258. [http://dx.doi.org/10.1016/S0031-0182\(97\)00075-8](http://dx.doi.org/10.1016/S0031-0182(97)00075-8).
- Dijkstra, T.A., Janssen, C.R., Middelkoop, H., Salomé, A.L., 1990. Observations concerning the extent and chronology of the Late-Glacial déglaciation stages in the Southern French Alps on the basis of two pollen diagrams. *Quaternaire* 1, 123–137. <http://dx.doi.org/10.3406/quate.1990.1929>.
- Dubar, M., Anthony, E.J., 1995. Holocene Environmental Change and River-Mouth Sedimentation in the Baie des Angles, French Riviera. *Quat. Res.* 43, 329–343. <http://dx.doi.org/10.1006/qres.1995.1039>.
- Dubar, M., Poizat, M., 1976. *Le glaciaire de la vallée des Merveilles (Alpes-Maritimes)*. Nice, France.
- Durand, Y., Giraud, G., Latenser, M., Etchevers, P., Mérindol, L., Lesaffre, B., 2009. Reanalysis of 47 years of climate in the French Alps (1958–2005): climatology and trends for snow cover. *J. Appl. Meteorol. Climatol.* 48, 2487–2512. <http://dx.doi.org/10.1175/2009JAMC1810.1>.
- Egli, M., Brandová, D., Böhlert, R., Favilli, F., Kubik, P.W., 2010. 10Be inventories in Alpine soils and their potential for dating land surfaces. *Geomorphology* 119, 62–73. <http://dx.doi.org/10.1016/j.geomorph.2010.02.019>.
- Favilli, F., Egli, M., Brandová, D., Ivy-Ochs, S., Kubik, P., Cherubini, P., Mirabella, A., Sartori, G., Giaccari, D., Haerberli, W., 2009. Combined use of relative and absolute dating techniques for detecting signals of Alpine landscape evolution during the late Pleistocene and early Holocene. *Geomorphology* 112, 48–66. <http://dx.doi.org/10.1016/j.geomorph.2009.05.003>.
- Feagri, K., Iversen, J., 1975. *Text Book of Pollen Analysis*. Blackwell, Oxford.
- Federici, P.R., Stefanini, M.C., 2001. Evidences and chronology of the Little Ice Age in the Argentera Massif (Italian Maritime Alps). *Z. Gletscherkd. Glazialgeol.* 37, 35–48.
- Federici, P.R., Pappalardo, M., Ribolini, A., 2003. *Geomorphological Map of the Maritime Alps Natural Park (Argentera Massif, Italy) and Surroundings*. S.E.L.C.A., Firenze.
- Federici, P.R., Granger, D.E., Pappalardo, M., Ribolini, A., Spagnolo, M., Cyr, A.J., 2008. Exposure age dating and Equilibrium Line Altitude reconstruction of an Egesen moraine in the Maritime Alps, Italy. *Boreas* 37, 245–253. <http://dx.doi.org/10.1111/j.1502-3885.2007.00018.x>.
- Federici, P.R., Granger, D.E., Ribolini, A., Spagnolo, M., Pappalardo, M., Cyr, A.J., 2012. Last Glacial Maximum and the Gschnitz stadial in the Maritime Alps according to 10Be cosmogenic dating. *Boreas* 41, 277–291. <http://dx.doi.org/10.1111/j.1502-3885.2011.00233.x>.
- Finsinger, W., 2001. Vegetation history and human impact at the Lago del Vei del Bouc (Argentera Massif, Maritime Alps)/Histoire de la végétation et de l'impact de l'homme au Lago del Vei del Bouc (Massif de l'Argentera, Alpes-Maritimes). *Quaternaire* 12, 223–233. <http://dx.doi.org/10.3406/quate.2001.1695>.
- Finsinger, W., Ribolini, A., 2001. Late glacial to Holocene deglaciation of the Colle del Vei del Bouc-Colle del Sabbione Area (Argentera Massif, Maritime Alps, Italy-France). *Geogr. Fis. Din. Quat.* 24, 141–156.
- Finsinger, W., Tinner, W., van der Knaap, W.O., Ammann, B., 2006. The expansion of hazel (*Corylus avellana* L.) in the southern Alps: a key for understanding its early Holocene history in Europe? *Quat. Sci. Rev.* 25, 612–631. <http://dx.doi.org/10.1016/j.quascirev.2005.05.006>.
- Finsinger, W., Tinner, W., 2007. Pollen and plant macrofossils at Lac de Fully (2135 m a.s.l.): Holocene forest dynamics on a highland plateau in the Valais, Switzerland. *Holocene* 17, 1119–1127. <http://dx.doi.org/10.1177/0959683607082552>.
- Gandouin, E., Franquet, E., 2002. *Late Glacial and Holocene Chronomid Assemblages in Lac Long Inférieur (Southern France, 2090 m): Palaeoenvironmental and Palaeoclimatic Implications*.
- Gianotti, F., Forno, M.G., Ivy-Ochs, S., Kubik, P.W., 2008. New chronological and stratigraphical data on the Ivrea amphitheatre (Piedmont, NW Italy). *Quat. Int.* 190, 123–135. <http://dx.doi.org/10.1016/j.quaint.2008.03.001>.
- Gidon, M., Monjuvent, G., 1969. *Essai de coordination des formations quaternaires de la moyenne Durance et du haut Drac (Hautes-Alpes)*. *Bull. Afeg* 2, 145–161.
- Giesecke, T., Bennett, K.D., Birks, H.J.B., Bjune, A.E., Bozilova, E., Feurdean, A., Finsinger, W., Froyd, C., Pokorný, P., Rösch, M., Seppä, H., Tonkov, S., Valsecchi, V., Wolters, S., 2011. The pace of Holocene vegetation change – testing for synchronous developments. *Quat. Sci. Rev.* 30, 2805–2814. <http://dx.doi.org/10.1016/j.quascirev.2011.06.014>.
- Giguët-Covex, C., Arnaud, F., Poulénard, J., Disnar, J.-R., Delhon, C., Francus, P., David, F., Enters, D., Rey, P.-J., Delanoy, J.-J., 2011. Changes in erosion patterns during the Holocene in a currently treeless subalpine catchment inferred from lake sediment geochemistry (Lake Anterne, 2063 m a.s.l., NW French Alps): the role of climate and human activities. *Holocene* 21, 651–665. <http://dx.doi.org/10.1177/0959683610391320>.
- Giraud, C., Frezzotti, M., 1997. Late Pleistocene glacial events in the Central Apennines, Italy. *Quat. Res.* 48, 280–290. <http://dx.doi.org/10.1006/qres.1997.1928>.
- Goehring, B.M., Vacca, D.A., Alley, R.B., Schaefer, J.M., 2012. Holocene dynamics of the Rhone Glacier, Switzerland, deduced from ice flow models and cosmogenic nuclides. *Earth Planet. Sci. Lett.* 351–352, 27–35. <http://dx.doi.org/10.1016/j.epsl.2012.07.027>.
- Grimm, E.C., 1987. CONISS: a FORTRAN 77 program for stratigraphically constrained cluster analysis by the method of incremental sum of squares. *Comput. Geosci.* 13, 13–35. [http://dx.doi.org/10.1016/0098-3004\(87\)90022-7](http://dx.doi.org/10.1016/0098-3004(87)90022-7).

- Guitier, F., 2003. Contribution pollen-analytique à l'histoire de la végétation au cours des derniers 100.000 ans dans la région d'Evian (Haute-Savoie, France): implications pour la chronologie du dernier glacier du Rhône (PhD thesis). Aix-Marseille Université III.
- Guitier, F., Triganon, A., Andrieu-Ponel, V., Ponel, P., Hébrard, J.-P., Nicoud, G., De Beaulieu, J.-L., Brewer, S., Guibal, F., 2005. First evidence of "in situ" Eemian sediments on the high plateau of Evian (Northern Alps, France): implications for the chronology of the Last Glaciation. *Quat. Sci. Rev.* 24, 35–47. <http://dx.doi.org/10.1016/j.quascirev.2004.06.011>.
- Hannss, C., 1970. Les glaciers les plus méridionaux des Alpes. Observations de la morphologie glaciaire dans les Alpes Maritimes, versant italien. *Rev. Géogr. alpine* LVIII, 619–648.
- Heiri, O., Millet, L., 2005. Reconstruction of Late Glacial summer temperatures from chironomid assemblages in Lac Lautrey (Jura, France). *J. Quat. Sci.* 20, 33–44. <http://dx.doi.org/10.1002/jqs.895>.
- Heiri, O., Wick, L., van Leeuwen, J.F., van der Knaap, W.O., Lotter, A.F., 2003. Holocene tree immigration and the chironomid fauna of a small Swiss subalpine lake (Hinterburgsee, 1515 m asl). *Palaeogeogr. Palaeoclimatol. Palaeoecol.* 189, 35–53. [http://dx.doi.org/10.1016/S0031-0182\(02\)00592-8](http://dx.doi.org/10.1016/S0031-0182(02)00592-8).
- Höfer, H., 1922. Die relative Lage der Firnlinie. *Petermanns Geogr.* 68, 57.
- Hormes, A., Ivy-Ochs, S., Kubik, P.W., Ferrel, L., Maria Michetti, A., 2008. 10Be exposure ages of a rock avalanche and a late glacial moraine in Alta Valtellina, Italian Alps. *Quat. Int.* 190, 136–145. <http://dx.doi.org/10.1016/j.quaint.2007.06.036>.
- Ilyashuk, B., Gobet, E., Heiri, O., Lotter, A.F., van Leeuwen, J.F.N., van der Knaap, W.O., Ilyashuk, E., Oberli, F., Ammann, B., 2009. Lateglacial environmental and climatic changes at the Maloja Pass, Central Swiss Alps, as recorded by chironomids and pollen. *Quat. Sci. Rev.* 28, 1340–1353. <http://dx.doi.org/10.1016/j.quascirev.2009.01.007>.
- Ivy-Ochs, S., Kerschner, H., Reuther, A., Preusser, F., Heine, K., Maisch, M., Kubik, P.W., Schlüchter, C., 2009. Latest Pleistocene and Holocene glacier variations in the European Alps. *Quat. Sci. Rev.* 28, 2137–2149.
- Ivy-Ochs, S., Kerschner, H., Reuther, A., Preusser, F., Heine, K., Maisch, M., Kubik, P.W., Schlüchter, C., 2008. Chronology of the last glacial cycle in the European Alps. *J. Quat. Sci.* 23, 559–573. <http://dx.doi.org/10.1002/jqs.1202>.
- Joerin, U.E., Nicolussi, K., Fischer, A., Stocker, T.F., Schlüchter, C., 2008. Holocene optimum events inferred from subglacial sediments at Tschierwa Glacier, Eastern Swiss Alps. *Quat. Sci. Rev.* 27, 337–350. <http://dx.doi.org/10.1016/j.quascirev.2007.10.016>.
- Jorda, M., 1975. Les montagnes du Haut Verdon, Étude géomorphologique. *Méditerranée* 1, 37–58. <http://dx.doi.org/10.3406/medit.1975.1585>.
- Jorda, M., 1976. La région du Lac d'Allos (Alpes de haute Provence), Carte géomorphologique Allos n° 3-1/20.000". *Méditerranée* 3, 49–62.
- Jorda, M., 1980. Le glaciaire quaternaire des Alpes de Haute Provence. *Revue Géographie alpine, Montagnes et Montagnards, Hommage à P. Veyret*, pp. 183–194.
- Jorda, M., 1983. L'évolution glaciaire d'altitude dans les Alpes françaises du Sud au cours des quinze derniers millénaires. *Oscillations fini- et postglaciaires des glaciers. Formes glaciaires et périglaciaires*. Balkema, Rotterdam, pp. 35–54.
- Jorda, M., 1988. Modalités paléoclimatiques et chronologiques de la déglaciation würmienne dans les Alpes françaises du Sud (Bassin durancien et Alpes de Haute Provence). *Bull. l'Assoc. Fr. l'étude Quat.* 25, 111–122.
- Jorda, M., de Beaulieu, J.-L., 1977. Tardiglaciaire et Postglaciaire des Alpes de Haute-Provence. Le glaciaire de la Blanche, Trois évènements. *Bull. l'Assoc. fr. l'étude quat.* 14, 3–15. <http://dx.doi.org/10.3406/quate.1977.1307>.
- Jorda, M., Rosique, T., Évin, J., 2000. Données nouvelles sur l'âge du dernier maximum glaciaire dans les Alpes méridionales françaises. *C. R. l'Acad. Sci. Ser. IIA Earth Planet. Sci.* 331, 187–193. [http://dx.doi.org/10.1016/S1251-8050\(00\)01408-7](http://dx.doi.org/10.1016/S1251-8050(00)01408-7).
- Jorda, M., Rosique, T., 1994. Le Tardiglaciaire des Alpes françaises du Sud: Rythme et modalités des changements bio-morphoclimatiques. *Quaternaire* 5, 141–149.
- Juggins, S., 2012. C2 Version 1.5. User Guide. Software for Ecological and Palaeoecological Data Analysis and Visualisation. Newcastle University, UK, 77 pp.
- Julian, M., 1980. Les Alpes franco-italiennes, Etude Géomorphologique. Aix-Marseille Université.
- Julian, M., Anthony, E., 1996. Aspects of landslide activity in the Mercantour Massif and the French Riviera, southeastern France. *Geomorphology* 15, 275–289. [http://dx.doi.org/10.1016/0169-555X\(95\)00075-G](http://dx.doi.org/10.1016/0169-555X(95)00075-G).
- Kelly, M.A., Kubik, P.W., Von Blanckenburg, F., Schüchter, C., 2004. Surface exposure dating of the Great Aletsch Glacier Egesen moraine system, western Swiss Alps, using the cosmogenic nuclide <sup>10</sup>Be. *J. Quat. Sci.* 19, 431–441. <http://dx.doi.org/10.1002/jqs.854>.
- Kerschner, H., Ivy-Ochs, S., 2008. Palaeoclimate from glaciers: examples from the Eastern Alps during the Alpine Lateglacial and early Holocene. *Glob. Planet. Change* 60, 58–71. <http://dx.doi.org/10.1016/j.gloplacha.2006.07.034>.
- Klassen, N., Fiebig, M., Preusser, F., Reither, J.M., Radtke, U., 2007. Luminescence dating of proglacial sediments from the Eastern Alps. *Quat. Int.* 164–165, 21–32. <http://dx.doi.org/10.1016/j.quaint.2006.12.003>.
- Koinig, K.A., Shoty, W., Lotter, A.F., Ohlendorf, C., Sturm, M., 2003. 9000 years of geochemical evolution of lithogenic major and trace elements in the sediment of an alpine lake – the role of climate, vegetation, and land-use history. *J. Paleolimnol.* 30, 307–320. <http://dx.doi.org/10.1023/A:1026080712312>.
- Kharbouch, M., 2000. L'homme et la végétation dans la région du mont Bego (Tende, Alpes-Maritimes) depuis des millénaires.
- Larocque, I., Finsinger, W., 2008. Late-glacial chironomid-based temperature reconstructions for Lago Piccolo di Avigliana in the southwestern Alps (Italy). *Palaeogeogr. Palaeoclimatol. Palaeoecol.* 257, 207–223. <http://dx.doi.org/10.1016/j.palaeo.2007.10.021>.
- Lemdahl, G., 2000. Lateglacial and Early Holocene insect assemblages from sites at different altitudes in the Swiss Alps—implications on climate and environment. *Palaeogeogr. Palaeoclimatol. Palaeoecol.* 159, 293–312. [http://dx.doi.org/10.1016/S0031-0182\(00\)00091-2](http://dx.doi.org/10.1016/S0031-0182(00)00091-2).
- Lischke, H., von Grafenstein, U., Ammann, B., 2013. Forest dynamics during the transition from the Oldest Dryas to the Bølling–Allerød at Gerzensee—a simulation study. *Palaeogeogr. Palaeoclimatol. Palaeoecol.* 391, 60–73. <http://dx.doi.org/10.1016/j.palaeo.2012.12.001>.
- Lopez-García, P., Lopez-Saez, J.A., 2000. Le paysage et la phase épipaléolithique-mésolithique dans les prépyrénées aragonaises et le bassin moyen de l'Ebre à partir de l'analyse pollinique. *Les derniers chasseurs-cueilleurs de l'Europe occidentale (13000-5500 avant J.C.)*. Besançon, France, pp. 59–69.
- Lotter, A., Birks, H.J., Eicher, U., Hofmann, W., Schwander, J., Wick, L., 2000. Younger Dryas and Allerød summer temperatures at Gerzensee (Switzerland) inferred from fossil pollen and cladoceran assemblages. *Palaeogeogr. Palaeoclimatol. Palaeoecol.* 159, 349–361. [http://dx.doi.org/10.1016/S0031-0182\(00\)00093-6](http://dx.doi.org/10.1016/S0031-0182(00)00093-6).
- Lotter, A.F., 1999. Late-glacial and Holocene vegetation history and dynamics as shown by pollen and plant macrofossil analyses in annually laminated sediments from Soppensee, central Switzerland. *Veg. Hist. Archaeobot.* 8, 165–184. <http://dx.doi.org/10.1007/BF02342718>.
- Lotter, A.F., Ammann, B., Sturm, M., 1992. Rates of change and chronological problems during the late-glacial period. *Clim. Dyn.* 6, 233–239. <http://dx.doi.org/10.1007/BF00193536>.
- Lotter, A.F., Birks, H.J.B., 2003. The Holocene palaeolimnology of Sägistalsee and its environmental history – a synthesis. *J. Paleolimnol.* 30, 333–342. <http://dx.doi.org/10.1023/A:1026091511403>.
- Magny, M., Aalbersberg, G., Bégeot, C., Benoit-Ruffaldi, P., Bossuet, G., Disnar, J.-R., Heiri, O., Laggoun-Defarge, F., Mazier, F., Millet, L., Peyron, O., Vannièr, B., Walter-Simonnet, A.-V., 2006. Environmental and climatic changes in the Jura mountains (eastern France) during the Lateglacial–Holocene transition: a multi-proxy record from Lake Lautrey. *Quat. Sci. Rev.* 25, 414–445. <http://dx.doi.org/10.1016/j.quascirev.2005.02.005>.
- Magri, D., 2008. Patterns of post-glacial spread and the extent of glacial refugia of European beech (*Fagus sylvatica*). *J. Biogeogr.* 35, 450–463. <http://dx.doi.org/10.1111/j.1365-2699.2007.01803.x>.
- Maisch, M., 1992. Die Gletscher Graubündens. In: *Physische Geographie*, vol. 33. Universität Zürich. Geographisches Institut, Zürich.
- Mercuri, A.M., Mazzanti, M.B., Florenzano, A., Montecchi, M.C., Rattighieri, E., 2013. Olea, Juglans and Castanea: the OJC group as pollen evidence of the development of human-induced environments in the Italian peninsula. *Quat. Int.* <http://dx.doi.org/10.1016/j.quaint.2013.01.005>.
- Monegato, G., Ravazzi, C., Donegana, M., Pini, R., Calderoni, G., Wick, L., 2007. Evidence of a two-fold glacial advance during the last glacial maximum in the Tagliamento end moraine system (eastern Alps). *Quat. Res.* 68, 284–302. <http://dx.doi.org/10.1016/j.yqres.2007.07.002>.
- Moore, P.D., Webb, J.A., Collinson, M.E., 1991. *Pollen Analysis*. Blackwell Science Ltd.
- Mourier, B., Poulenard, J., Carcaillet, C., Williamson, D., 2010. Soil evolution and subalpine ecosystem changes in the French Alps inferred from geochemical analysis of lacustrine sediments. *J. Paleolimnol.* 44, 571–587. <http://dx.doi.org/10.1007/s10933-010-9438-0>.
- Muller, S.D., Nakagawa, T., De Beaulieu, J.-L., Court-Picon, M., Carcaillet, C., Miramont, C., Roiron, P., Bouterlin, C., Ali, A.A., Bruneton, H., 2007. Post-glacial migration of silver fir (*Abies alba* Mill.) in the south-western Alps. *J. Biogeogr.* 34, 876–899. <http://dx.doi.org/10.1111/j.1365-2699.2006.01665.x>.
- Nakagawa, T., 1998. Etudes palynologiques dans les Alpes Françaises centrales et méridionales: histoire de la végétation Tardiglaciaire et Holocène (PhD thesis). Aix-Marseille Université III.
- Nicolussi, K., Kaufmann, M., Patzelt, G., van der Plicht, J., Thurner, A., 2005. Holocene tree-line variability in the Kauner Valley, Central Eastern Alps, indicated by dendrochronological analysis of living trees and subfossil logs. *Veg. Hist. Archaeobot.* 14, 221–234. <http://dx.doi.org/10.1007/s00334-005-0013-y>.
- Ohlendorf, C., 1998. High Alpine Lake Sediments as Chronicles for Regional Glacier and Climate History in the Upper Engadine, Southeastern Switzerland (PhD thesis) n°12705. ETH.
- Ortu, E., 2002. Reconstruction sur base pollinique de la dynamique de la végétation tardiglaciaire et holocène dans les Alpes Maritimes Italiennes (PhD thesis). Aix-Marseille Université III.
- Ortu, E., David, F., Caramiello, R., 2005. Effet des paramètres locaux sur le développement de la végétation dans le Vallon de St. Anna di Vinadio (Alpes Maritimes; Italie). *Ecoscience* 12, 122–135. <http://dx.doi.org/10.2980/i1195-6860-12-1-122.1>.
- Pallàs, R., Rodés, A., Braucher, R., Carcaillet, J., Ortuño, M., Bordonau, J., Bourliès, D., Vilaplana, J.M., Masana, E., Santanach, P., 2006. Late Pleistocene and Holocene glaciation in the Pyrenees: a critical review and new evidence from 10Be exposure ages, south-central Pyrenees. *Quat. Sci. Rev.* 25, 2937–2963. <http://dx.doi.org/10.1016/j.quascirev.2006.04.004>.
- Petersen, J., Wilhelm, B., Revel, M., Rolland, Y., Crouzet, C., Arnaud, F., Brisset, E., Chaumillon, E., Magand, O., 2014. Sediments of Lake Vens (SW European Alps, France) record large-magnitude earthquake events. *J. Paleolimnol.* 51, 343–355. <http://dx.doi.org/10.1007/s10933-013-9759-x>.

- Peyron, O., Bégeot, C., Brewer, S., Heiri, O., Magny, M., Millet, L., Ruffaldi, P., Van Campo, E., Yu, G., 2005. Late-Glacial climatic changes in Eastern France (Lake Lautrey) from pollen, lake-levels, and chironomids. *Quat. Res.* 64, 197–211. <http://dx.doi.org/10.1016/j.yqres.2005.01.006>.
- Ponel, P., Andrieu-Ponel, V., Parchoux, F., Juhasz, I., de Beaulieu, J.-L., 2001. Late-glacial and Holocene high-altitude environmental changes in Vallée des Merveilles (Alpes-Maritimes, France): insect evidence. *J. Quat. Sci.* 16, 795–812. <http://dx.doi.org/10.1002/jqs.634>.
- Ponel, P., Court-Picon, M., Badura, M., Guiter, F., de Beaulieu, J.-L., Andrieu-Ponel, V., Djamali, M., Leydet, M., Gandouin, E., Buttler, A., 2011. Holocene history of Lac des Lauzons (2180 m a.s.l.), reconstructed from multiproxy analyses of Coleoptera, plant macroremains and pollen (Hautes-Alpes, France). *Holocene* 21, 565–582. <http://dx.doi.org/10.1177/0959683610385725>.
- Preusser, F., Schlüchter, C., Drescher-Schneider, R., Ivy-Ochs, S., Kelly, M., 2006. Comment on “First evidence of ‘in-situ’ Eemian sediments on the high plateau of Evian (Northern Alps, France): implications for the chronology of the Last Glaciation” by F. Guiter, A. Triganon, V. Andrieu-Ponel, P. Ponel, J.-P. Hébrard, G. Nicoud, J.-L. De Beaulieu, S. Brewer, F. Guibal. *Quat. Sci. Rev.* 25, 645–647. <http://dx.doi.org/10.1016/j.quascirev.2005.09.004>.
- Rasmussen, S.O., Seierstad, I.K., Andersen, K.K., Bigler, M., Dahl-Jensen, D., Johnsen, S.J., 2008. Synchronization of the NGRIP, GRIP, and GISP2 ice cores across MIS 2 and palaeoclimatic implications. *Quat. Sci. Rev.* 27, 18–28. <http://dx.doi.org/10.1016/j.quascirev.2007.01.016>.
- Ravazzi, C., Pini, R., Badino, F., De Amicis, M., Londeix, L., Reimer, P.J., 2014. The latest LGM culmination of the Garda Glacier (Italian Alps) and the onset of glacial termination. Age of glacial collapse and vegetation chronosequence. *Quat. Sci. Rev.* 105, 26–47. <http://dx.doi.org/10.1016/j.quascirev.2014.09.014>.
- Reille, M., 1999. Pollen et spores d'Europe et d'Afrique du nord. Laboratoire de botanique historique et palynologie.
- Reimer, P.J., Bard, E., Bayliss, A., Beck, J.W., Blackwell, P.G., Bronk Ramsey, C., Buck, C.E., Cheng, H., Edwards, R.L., Friedrich, M., Grootes, P.M., Guilderson, T.P., Haflidason, H., Hajdas, I., Hatté, C., Heaton, T.J., Hoffmann, D.L., Hogg, A.G., Hughen, K.A., Kaiser, K.F., Kromer, B., Manning, S.W., Niu, M., Reimer, R.W., Richards, D.A., Scott, E.M., Southon, J.R., Staff, R.A., Turney, C.S.M., van der Plicht, J., 2013. IntCal13 and Marine13 radiocarbon age calibration curves 0–50,000 years cal BP. *Radiocarbon* 55 (4), 1869–1887.
- Reitner, J.M., 2007. Glacial dynamics at the beginning of Termination I in the Eastern Alps and their stratigraphic implications. *Quat. Int.* 164–165, 64–84. <http://dx.doi.org/10.1016/j.quaint.2006.12.016>.
- Ribolini, A., Chelli, A., Guglielmin, M., Pappalardo, M., 2007. Relationships between glacier and rock glacier in the Maritime Alps, Schiantala Valley, Italy. *Quat. Res.* 68, 353–363. <http://dx.doi.org/10.1016/j.yqres.2007.08.004>.
- Richard, H., Bégeot, C., 2000. The Lateglacial injurassian massif: state and research perspectives. *Quaternaire* 11, 145–154. <http://dx.doi.org/10.3406/quate.2000.1663>.
- Richer, S., 2009. From Pollen to People: the Interaction between People and Their Environment in the Mid- to High- Altitudes of the Southern French Alps (PhD thesis). York University.
- Rosique, T., 2004. La dernière phase glaciaire de la moyenne Durance (région de Gap à Sisteron): bilan des recherches, dernières conclusions chronologiques. In: *Géosystèmes montagnards et méditerranéens, un mélange offert à Maurice Jorda*. Méditerranée 1, pp. 25–35.
- Schweizer, G., 1968a. Der Formenschatz des Spät- und Postglazials in den Hohen Seealpen. *Aktualmorphologische Studien im Oberen Tinée*. Z. Geomorphol. 6.
- Schweizer, G., 1968b. Le tardiglaciaire et le niveau des neiges permanentes dans les hautes montagnes des Alpes-Maritimes. L'exemple du bassin supérieur de la Tinée. *Méditerranée* 9, 23–40. <http://dx.doi.org/10.3406/medit.1968.1263>.
- Thevenon, F., Adatte, T., Spangenberg, J.E., Anselmetti, F.S., 2012. Elemental (C/N ratios) and isotopic ( $\delta^{15}\text{N}_{\text{org}}$ ,  $\delta^{13}\text{C}_{\text{org}}$ ) compositions of sedimentary organic matter from a high-altitude mountain lake (Meidsee, 2661 m a.s.l., Switzerland): Implications for Lateglacial and Holocene Alpine landscape evolution. *Holocene* 22, 1135–1142. <http://dx.doi.org/10.1177/0959683612441841>.
- Tiercelin, J.-J., 1977. Fronts glaciaires d'âge Würmien dans les environs du Poët, vallée de la Durance. *Geol. Méditerr.* IV, 307–312.
- Tinner, W., Ammann, B., Germann, P., 1996. Treeline fluctuations recorded for 12,500 years by soil profiles, pollen, and plant macrofossils in the Central Swiss Alps. *Arct. Alp. Res.* 28, 131. <http://dx.doi.org/10.2307/1551753>.
- Van der Knaap, W.O., van Leeuwen, J.F.N., Finsinger, W., Gobet, E., Pini, R., Schweizer, A., Valsecchi, V., Ammann, B., 2005. Migration and population expansion of *Abies*, *Fagus*, *Picea*, and *Quercus* since 15000 years in and across the Alps, based on pollen-percentage threshold values. *Quat. Sci. Rev.* 24, 645–680. <http://dx.doi.org/10.1016/j.quascirev.2004.06.013>.
- Van Husen, D., 1997. LGM and Late-Glacial fluctuations in the eastern Alps. *Quat. Int.* 38/39, 109–118.
- Vescovi, E., Ravazzi, C., Arpentini, E., Finsinger, W., Pini, R., Valsecchi, V., Wick, L., Ammann, B., Tinner, W., 2007. Interactions between climate and vegetation during the Lateglacial period as recorded by lake and mire sediment archives in Northern Italy and Southern Switzerland. *Quat. Sci. Rev.* 26, 1650–1669. <http://dx.doi.org/10.1016/j.quascirev.2007.03.005>.
- Wick, L., 2000. Vegetational response to climatic changes recorded in Swiss Late Glacial lake sediments. *Palaeogeogr. Palaeoclimatol. Palaeoecol.* 159, 231–250. [http://dx.doi.org/10.1016/S0031-0182\(00\)00087-0](http://dx.doi.org/10.1016/S0031-0182(00)00087-0).
- Wohlfarth, B., Possnert, G., Skog, G., Holmquist, B., 1998. Pitfalls in the AMS radiocarbon-dating of terrestrial macrofossils. *J. Quat. Sci.* 13, 137–145.
- Zohary, D., Hopf, M., 2000. *Domestication of Plants in the Old World*. Oxford University Press, New York.