



HAL
open science

The Molecular Gas Content and Fuel Efficiency of Starbursts at $z \sim 1.6$ with ALMA

J. D. Silverman, W. Rujopakarn, Emanuele Daddi, A. Renzini, G. Rodighiero, D.
Liu, A. Puglisi, M. Sargent, C. Mancini, J. Kartaltepe, et al.

► **To cite this version:**

J. D. Silverman, W. Rujopakarn, Emanuele Daddi, A. Renzini, G. Rodighiero, et al.. The Molecular Gas Content and Fuel Efficiency of Starbursts at $z \sim 1.6$ with ALMA. *The Astrophysical Journal Letters*, 2018, 867 (2), pp.92. <10.3847/1538-4357/aae25e>. <hal-02043173>

HAL Id: hal-02043173

<https://hal.science/hal-02043173v1>

Submitted on 21 Jan 2020

HAL is a multi-disciplinary open access archive for the deposit and dissemination of scientific research documents, whether they are published or not. The documents may come from teaching and research institutions in France or abroad, or from public or private research centers.

L'archive ouverte pluridisciplinaire **HAL**, est destinée au dépôt et à la diffusion de documents scientifiques de niveau recherche, publiés ou non, émanant des établissements d'enseignement et de recherche français ou étrangers, des laboratoires publics ou privés.



HAL Authorization



The Molecular Gas Content and Fuel Efficiency of Starbursts at $z \sim 1.6$ with ALMA

J. D. Silverman¹, W. Rujopakarn^{1,2,3}, E. Daddi⁴, A. Renzini⁵, G. Rodighiero⁶, D. Liu⁴, A. Puglisi^{4,5}, M. Sargent⁷, C. Mancini^{6,5}, J. Kartaltepe⁸, D. Kashino⁹, A. Koekemoer¹⁰, N. Arimoto^{11,12}, M. Béthermin¹³, S. Jin^{4,14}, G. Magdis¹⁵, T. Nagao¹⁶, M. Onodera¹², D. Sanders¹⁷, and F. Valentino¹⁸

¹ Kavli Institute for the Physics and Mathematics of the Universe, The University of Tokyo, Kashiwa, 277-8583 (Kavli IPMU, WPI), Japan; silverman@ipmu.jp

² Department of Physics, Faculty of Science, Chulalongkorn University, 254 Phayathai Road, Pathumwan, Bangkok 10330, Thailand

³ National Astronomical Research Institute of Thailand (Public Organization), Don Kaeo, Mae Rim, Chiang Mai 50180, Thailand

⁴ Laboratoire AIM, CEA/DSM-CNRS-Université Paris Diderot, Irfu/Service d'Astrophysique, CEA Saclay, France

⁵ INAF—Osservatorio Astronomico di Padova, Vicolo dell'Osservatorio 5, I-35122, Padova, Italy

⁶ Dipartimento di Fisica e Astronomia, Università di Padova, vicolo Osservatorio, 3, I-35122, Padova, Italy

⁷ Astronomy Centre, Department of Physics and Astronomy, University of Sussex, Brighton, BN1 9QH, UK

⁸ School of Physics and Astronomy, Rochester Institute of Technology, 84 Lomb Memorial Drive, Rochester, NY 14623, USA

⁹ Department of Physics, ETH Zürich, Wolfgang-Pauli-Strasse 27, CH-8093, Zürich, Switzerland

¹⁰ Space Telescope Science Institute, 3700 San Martin Drive, Baltimore, MD 21218, USA

¹¹ Astronomy Program, Department of Physics and Astronomy, Seoul National University, 599 Gwanak-ro, Gwanak-gu, Seoul, 151-742, Republic of Korea

¹² Subaru Telescope, 650 North A'ohoku Place, Hilo, HI 96720, USA

¹³ Aix Marseille Université, CNRS, LAM (Laboratoire d'Astrophysique de Marseille) UMR 7326, F-13388 Marseille, France

¹⁴ Key Laboratory of Modern Astronomy and Astrophysics in Ministry of Education, School of Astronomy and Space Sciences, Nanjing University, Nanjing, 210093, People's Republic of China

¹⁵ Cosmic DAWN Centre, Niels Bohr Institute, University of Copenhagen, Juliane Mariesvej 30, DK-2100, Copenhagen, Denmark

¹⁶ Research Center for Space and Cosmic Evolution, Ehime University, 2-5 Bunkyo-cho, Matsuyama 790-8577, Japan

¹⁷ Institute for Astronomy, University of Hawaii, 2680 Woodlawn Drive, Honolulu, HI 96822, USA

¹⁸ Dark Cosmology Centre, Niels Bohr Institute, University of Copenhagen, Juliane Maries Vej 30, DK-2100 Copenhagen, Denmark

Received 2018 May 15; revised 2018 August 24; accepted 2018 September 14; published 2018 November 2

Abstract

We present an analysis of the molecular gas properties, based on CO (2–1) emission, of 12 starburst galaxies at $z \sim 1.6$ selected by having a boost ($\gtrsim 4\times$) in their star formation rate (SFR) above the average star-forming galaxy at an equivalent stellar mass. ALMA observations are acquired of six more galaxies than previously reported through our effort. As a result of the larger statistical sample, we significantly detect, for the first time at high z , a systematically lower $L'_{\text{CO}}/L_{\text{IR}}$ ratio in galaxies lying above the star-forming “main sequence” (MS). Based on an estimate of α_{CO} (i.e., the ratio of molecular gas mass to $L'_{\text{CO}(1-0)}$), we convert the observational quantities (e.g., $L'_{\text{CO}}/L_{\text{IR}}$) to physical units ($M_{\text{gas}}/\text{SFR}$) that represent the gas depletion time or its inverse, the star formation efficiency. We interpret the results as indicative of the star formation efficiency increasing in a continuous fashion from the MS to the starburst regime, whereas the gas fractions remain comparable to those of MS galaxies. However, the balance between an increase in star formation efficiency and gas fraction depends on the adopted value of α_{CO} as discussed.

Key words: galaxies: high-redshift – galaxies: ISM – galaxies: starburst – galaxies: star formation

1. Introduction

On occasion, galaxies experience a rapid rise in their production rate of forming new stars, usually referred to as a starburst (e.g., Sanders & Mirabel 1996). Such explosive phenomena, in the local universe, are the result of the merger of two massive, gas-rich galaxies that induce intense star formation and can boost the growth of their central supermassive black hole (e.g., Di Matteo et al. 2005; Hopkins et al. 2006; Volonteri et al. 2015). It remains to be demonstrated whether the same process is also responsible for starburst galaxies in the early universe, with star formation rates (SFRs) several times higher than those of more common galaxies. Recent hydrodynamical simulations of galaxy mergers (Fensch et al. 2017) at high redshifts show rather mild boosts in star formation, as compared to the typical star-forming galaxy population, which is attributed to the already-enhanced SFRs as a result of their high gas fractions. While such starburst galaxies do not appear to be the leading mechanism responsible for the cosmic history of star formation (Lotz et al. 2008; Rodighiero et al. 2011; Sargent et al. 2012; Lackner et al. 2014), they may still represent a crucial passage in the life cycle of galaxies.

Local starbursts appear to support the scenario of having a higher efficiency in forming stars (Solomon et al. 1997) and suggest a different mode of star formation distinct from that of typical star-forming galaxies (Daddi et al. 2010b; Genzel et al. 2010). However, it is still unclear whether starbursts, including those at higher redshifts, are the result of either enhanced levels of molecular gas out of which stars form (i.e., a higher gas fraction; Scoville et al. 2016; Lee et al. 2017), a higher efficiency to form stars from a given supply of gas (Magdis et al. 2012a; Genzel et al. 2015; Silverman et al. 2015a; Elbaz et al. 2018), or a combination of both (Combes et al. 2013; Scoville et al. 2017; Tacconi et al. 2017). It is therefore imperative to establish whether such different modes of star formation are active at earlier stages in the evolution of our universe when most of the star formation was actually taking place. Alternatively, the efficiency to form stars may be a continuous function with distance above the star-forming “main sequence” (MS; Speagle et al. 2014; Renzini & Peng 2015). With sufficient investigations, we can also determine whether mergers are the sole mechanism responsible for enhanced star formation efficiency (SFE) or whether other processes, such as violent disk instabilities

(Bournaud et al. 2010; Dekel & Burkert 2014), can drive SFRs well above that of the typical star-forming MS. Carilli & Walter (2013) present an overview of the molecular gas properties of high-redshift star-forming galaxies as related to this topic.

To address these issues, we have undertaken a study, as first presented in Silverman et al. (2015a), to measure the molecular gas properties using carbon monoxide ^{12}CO , primarily the $J = 2-1$ transition, of galaxies in the COSMOS field (Scoville et al. 2007) having SFRs well above ($\gtrsim 4\times$) the star-forming MS at $z \sim 1.6$. Observations are mainly acquired with the Atacama Large Millimeter/submillimeter Array (ALMA) and supplemented with those from the Northern Extended Millimeter Array (NOEMA) Interferometer. The rotational transition CO (2–1) is at an excitation level close to the locally calibrated tracer CO (1–0) of the total molecular gas mass; thus, it has been used for many studies of high-redshift galaxies to date (e.g., Tacconi et al. 2017).

Our starburst sample has been selected to span a narrow range of accurate spectroscopic redshifts ($z \sim 1.6$) from which it has been drawn (Silverman et al. 2015b). At these redshifts, there are still limited numbers of starburst galaxies with CO observations in the literature (see Figure 2 of Tacconi et al. 2017). The stellar mass and SFRs of galaxies in our sample are based on mid- and far-IR observations from the *Spitzer* and *Herschel* satellites, placing them securely in the starburst class (Rodighiero et al. 2011) and matching fairly well in stellar mass to existing samples of more normal galaxies with CO detections at a similar redshift. Being located in the COSMOS field, we have a wealth of multiwavelength data across the electromagnetic spectrum; thus, our approach, in particular the selection method, complements that used in the literature for starburst galaxies, such as the brightest submillimeter galaxies (SMGs) at high z (e.g., Ivison et al. 2005, 2011; Casey et al. 2011, 2017; Danielson et al. 2017). Compared to classical SMGs, our selection avoids contamination by massive galaxies on the MS (Magnelli et al. 2012), reduces SED bias compared to SMG selection (which prefers cold objects), and is able to pick objects even with less extreme SFRs, but much higher above the MS population. We refer the reader to Casey et al. (2014), which provides a comprehensive review of the vast literature on dust-obscured star-forming galaxies at high redshift.

To build on our past study, we report here on ALMA observations of the molecular gas content as traced by CO (2–1) of six additional starburst galaxies that have SFRs highly elevated ($\gtrsim 4\times$) from the star-forming MS at $z \sim 1.6$. This larger sample of 12 galaxies enables us to confirm trends (e.g., $L'_{\text{CO}}/L'_{\text{CO}}_{\text{MS}}$ vs. $\delta_{\text{MS}} = \text{sSFR}/\langle \text{sSFR} \rangle_{\text{MS}}$, where $\text{sSFR} = \text{SFR}/M_{\text{stellar}}$) seen in the previous study with higher statistical significance due to the larger size of the sample and higher boost in SFR above the star-forming MS. We present our results with consideration of the likely range of the factor (α_{CO}) required to convert CO luminosity to molecular gas mass (Bolatto et al. 2013; Carleton et al. 2017), a critical aspect of this analysis. Correspondingly, we have measured α_{CO} based on dynamical arguments for three of our sources, as presented in Silverman et al. (2015a) and Silverman et al. (2018), and have information on the metallicity from the $[\text{N II}]/\text{H}\alpha$ ratio acquired through near-infrared spectroscopy (Zahid et al. 2014; Kashino et al. 2017; Puglisi et al. 2017). Throughout this work, we refer to the total molecular gas mass as primarily composed of H_2 and

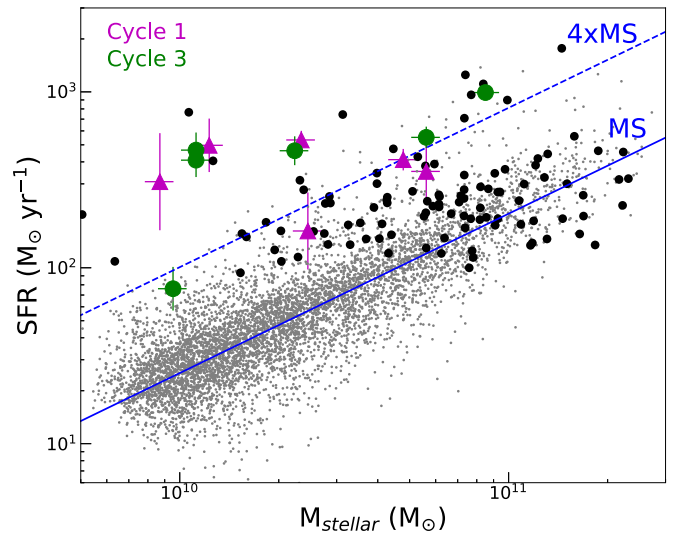


Figure 1. SFR vs. M_{stellar} for star-forming galaxies (including starbursts detected by *Herschel*) at $1.4 < z < 1.7$. The large colored symbols indicate the 12 starbursts observed by ALMA (Cycle 1: magenta; Cycle 3: green) that constitute the focus of our study. With black symbols, we indicate the location of *Herschel*-detected galaxies that have spectroscopic redshifts over the same interval from the FMOS-COSMOS survey. Smaller circles show the location of MS galaxies (gray) having photometric redshifts from Laigle et al. (2016). The solid line indicates the MS, as determined by a fit to the gray data points having $\text{sSFR} > 2 \times 10^{-10} \text{ yr}^{-1}$, and a parallel track (dashed) at an elevated rate of $4\times$ above the MS that illustrates the typical boosts in SFR for our starbursts.

He, and we assume $H_0 = 70 \text{ km s}^{-1} \text{ Mpc}^{-1}$, $\Omega_{\Lambda} = 0.7$, and $\Omega_{\text{M}} = 0.3$. We use stellar masses and SFRs converted to a scale based on a Chabrier initial mass function (IMF); we chose this IMF (different from that presented in Silverman et al. 2015a) to aid in comparisons with the literature (Sargent et al. 2014; Tacconi et al. 2017).

2. Selection of the Sample and Physical Characteristics

To construct a robust sample of starburst galaxies at $z \sim 1.6$, we first acquired spectroscopic redshifts of *Herschel* sources through the FMOS-COSMOS survey (Silverman et al. 2015b), a spectroscopic survey of star-forming galaxies at $1.4 \lesssim z \lesssim 1.7$ in the near-infrared ($1.11\text{--}1.35 \mu\text{m}$ and $1.6\text{--}1.8 \mu\text{m}$) using the instrument FMOS (Kimura et al. 2010) on the Subaru Telescope. Fibers were allocated to *Herschel* sources with a high priority, especially for those having SFRs that place them above ($>4\times$) the MS (see below). Spectroscopic redshifts are determined from the centroid of the $\text{H}\alpha$ emission line with additional lines ($[\text{N II}] \lambda 6584$, $[\text{O III}] \lambda 5008$, and $\text{H}\beta$), providing further assurance of the redshift. These emission lines also provide a measure of the level of dust extinction and chemical enrichment. On the rest-frame optical emission line properties of high- z starbursts, we refer to a separate study (Puglisi et al. 2017) that makes use of a larger sample than presented here since only a subset of the outliers from the MS have been observed with ALMA. In Figure 1, we present the SFR and stellar mass distribution of the full sample of 108 galaxies detected by *Herschel* and having spectroscopic redshifts ($1.4 < z < 1.7$) from our FMOS-COSMOS program.

2.1. Stellar Mass

Stellar masses are determined by fitting the spectral energy distribution (SED) using Hyperz (Bolzonella et al. 2000) and stellar population synthesis models (Bruzual & Charlot 2003),

based on a Chabrier IMF, at the FMOS spectroscopic redshift. Our motivation to recompute the stellar masses ourselves, for the initial selection, was to have consistency for both starbursts and MS galaxies as done in Puglisi et al. (2017). This ensures that the enhancement in SFR for the starbursts, at a given stellar mass, is not due to different methods applied to each galaxy type. We implement constant star formation histories while being aware that the stellar masses may be systematically lower than if assuming an exponentially declining model with a recent burst of star formation. Photometric data cover the full spectrum from the near-UV to the IR, with the latter being especially important for stellar mass estimates of our highly obscured starbursts. The COSMOS field has deep imaging from UltraVISTA (*YJHK_s*; McCracken et al. 2012), Subaru Hyper Suprime-Cam (*grizy*; Tanaka et al. 2017), and *Spitzer*/IRAC (3.6, 4.5, 5.8, and 8.0 μm ; Sanders et al. 2007; P. Capak et al. 2018 in preparation). *Spitzer* MIPS 24 μm priors are used for deblending *Herschel* (or 70 μm *Spitzer*) sources required for accurate estimate of SFR. The stellar masses are in very good agreement with those given in Laigle et al. (2016) while considering differences between the spectroscopic and photometric redshifts.

2.2. SFR

For all *Herschel*-detected starbursts with spectroscopic redshifts, SFRs are determined from the total infrared (TIR) luminosity L_{TIR} and the calibration of Kennicutt & Evans (2012) to fully account for the obscured component that dominates the emission from starbursts ($\sim 90\%$; Rodighiero et al. 2011). We use the long-wavelength photometry from *Spitzer* (24 μm ; Sanders et al. 2007), *Herschel* PACS (100 and 160 μm ; Lutz et al. 2011), and SPIRE (250, 350, and 500 μm) bands, available over the COSMOS field. In Figure 2, we show the SEDs of our starbursts (observed with ALMA in Cycle 3). The photometric data are fit with a dust model (Draine & Li 2007), with the integral from 8 to 1000 μm providing our measure of L_{TIR} .

A galaxy is defined to be a starburst if the SFR exceeds, at their respective stellar mass, the mean SFR of MS galaxies by a factor $\gtrsim 4$ (Figure 1). This is effectively a selection in sSFR and not a cut on SFR alone. Our starburst sample, observed with ALMA, has SFRs ranging from ~ 100 to $1000 M_{\odot} \text{yr}^{-1}$ (Table 1). As a confirmation on the accuracy of the SFRs, the radio emission, as detected by the VLA at 1.4 (Schinnerer et al. 2007) and 5 GHz (Smolčić et al. 2017), is in very good agreement with the power-law synchrotron component as shown in each panel of Figure 2 that has a normalization only set by the infrared—radio relation. In Figure 1, the distribution of star-forming galaxies in the SFR – M_{stellar} plane illustrates the robust selection of outliers (i.e., starbursts) that fall above the star-forming MS as indicated by the best-fit linear relation (Equation (1)) to 5266 *sBzK*-selected galaxies (Daddi et al. 2004; Puglisi et al. 2017) in the COSMOS field with $1.4 < z_{\text{phot}} < 1.7$.

$$\log \text{SFR} = 0.91 \pm 0.09 \times \log M_{\text{stellar}} - 7.70 \pm 0.10. \quad (1)$$

By selecting galaxies based on their sSFR (Rodighiero et al. 2011), we avoid the inclusion of star-forming galaxies at the massive end of the MS that would be selected if employing a method (e.g., submillimeter flux alone) primarily sensitive to SFR. This requires an accurate determination of the

star-forming MS that has been achieved with our FMOS-COSMOS sample (Kashino et al. 2013). For this purpose, we rely on accurate measurements of stellar mass and SFRs provided by the COSMOS multiwavelength effort, particularly the deep IR imaging with UltraVISTA and *Herschel* photometry as described above. This method allows us to select objects offset ($\gtrsim 4\times$ above) from the MS but less extreme than ULIRGs at low redshift.

2.3. Cycle 1 ALMA Sample

The five *Herschel*-detected starbursts observed in Cycle 1 with ALMA, as fully described in Silverman et al. (2015a), were selected to have a boost in SFR greater than $4\times$ above the MS at their respective stellar mass, while the Cycle 3 observations, presented below, are selected to be further elevated from the MS. The Cycle 1 sample has spectroscopic redshifts within $1.44 < z_{\text{spec}} < 1.66$, stellar masses between 10^{10} and $10^{11} M_{\odot}$, and SFRs greater than $300 M_{\odot} \text{yr}^{-1}$, with the exception of one of them (PACS-325) at a slightly lower SFR (Table 1).

Total CO (2–1) emission was detected for five galaxies with a flux density for each ranging between 0.37 and 2.7 mJy and at a significance greater than 4.7σ . Having been observed at higher spatial resolution (beam size of $1''.3 \times 1''.0$), two sources (PACS-819 and PACS-830) show signs of extended emission, while the rest are unresolved. The size and velocity measurements for these two enable us to estimate their gas mass, independent of CO luminosity, through dynamical arguments, thus making an estimate of the conversion factor α_{CO} , the ratio of molecular gas mass to CO (1–0) luminosity. Further details on the scientific results are given in Silverman et al. (2015a). For the remainder of this investigation, we extend the analysis to 12 starbursts, with 11 based on ALMA observations and a single observation of PACS-164 (Silverman et al. 2015a) with the NOEMA interferometer. We chose not to include the CO (3–2) observation of PACS-282 since the galaxy is at a higher redshift ($z = 2.187$) than the rest of the sample.

2.4. Comparison Sample

For subsequent comparative analyses, a reference sample is utilized as compiled by Sargent et al. (2014) that includes 131 “typical” star-forming galaxies at $z \lesssim 4$ with measurements of their CO luminosity (Figure 3). Here, we list and give credit to the teams responsible for these data sets. In the local universe, the HERACLES survey (e.g., Leroy et al. 2013) provides CO (2–1) observations of galaxies in the THINGS survey (Walter et al. 2008) with the IRAM 30 m single-dish telescope. COLD GASS (Saintonge et al. 2011) provides CO (1–0) fluxes for late-type galaxies with $0.025 < z < 0.05$ from IRAM 30 m. Higher redshift star-forming MS galaxies have been reported in many studies (e.g., Daddi et al. 2010a, 2010b; Geach et al. 2011; Magdis et al. 2012b, 2017; Tacconi et al. 2013).

The starbursts included here are a restricted sample of nine local ULIRGs with two independent measurements of α_{CO} , a dynamical assessment (Downes & Solomon 1998) and that based on radiative transfer modeling (Papadopoulos et al. 2012). This local starburst sample has boosts above the average star-forming population of factors between ~ 10 and 100 (Rujopakarn et al. 2011). In addition, three high-redshift starbursts are represented: GN 20 ($z = 4.05$; Tan et al. 2014,

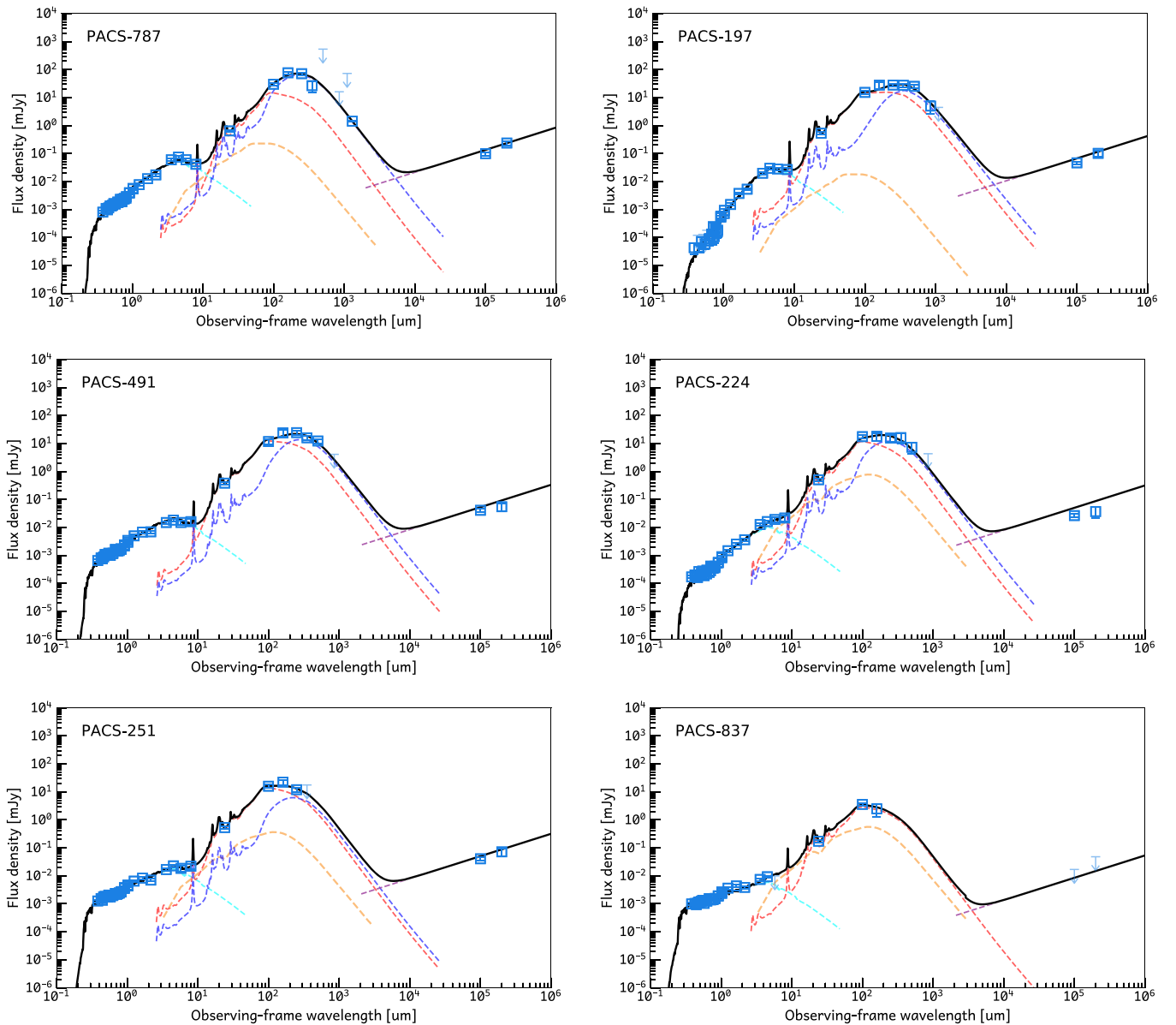


Figure 2. SEDs of our Cycle 3 sample from IR to radio wavelengths (photometric data are shown in blue), with the best-fit model shown by the black curve. The model of the dust emission is given for both a warm (red) and a cool (purple) component that contributes to the mid- to far-infrared emission. The unobscured stellar emission is shown by the cyan curve. An AGN contribution (yellow) is negligible for all cases.

SMM J2135–0102 ($z = 2.325$; Swinbank et al. 2011) and HERMES J105751.1+573027 ($z = 2.957$; Riechers et al. 2011). We refer the reader to Sargent et al. (2014) and Tacconi et al. (2017) for a complete description of the individual samples. In Figure 3, we also include our ALMA/FMOS starburst sample at $z \sim 1.6$. It is evident that this study improves the statistics with respect to the number of starbursts at $z > 1$ with CO detections; this is also exemplified in Figure 2 of Tacconi et al. (2017).

We mention that the published samples used in this analysis were chosen to well represent the molecular gas properties of star-forming galaxies over a wide redshift range for comparison with our high- z starbursts. There are additional samples that are available (e.g., Bothwell et al. 2013; Combes et al. 2013) but not included here since our aim was not to present a comprehensive assessment of the field. For this, we refer the reader to the recent work by Tacconi et al. (2017).

3. ALMA Observations and Data Analysis

Seven galaxies were observed in Cycle 3 (Project 2015.1.00861.S) with 38–39 12 m antennas on 2016 March 4, 11, and 13. Slightly different configurations for each science block yielded an angular resolution between $1''.7$ and $1''.8$, slightly higher than the request of $3''$. We selected spectral windows to detect $^{12}\text{C}^{16}\text{O}$ ($2-1$; $\nu_{\text{rest}} = 230.538$ GHz) redshifted into Band 3. Four base bands ($\Delta\nu = 1.875$ GHz each) were configured to detect CO emission for multiple targets (2–3) at different redshifts within a single science block and provide a measure of the continuum as an additional science product. Standard targets were used for calibration (e.g., flux, phase, bandpass), including J0854+2006, J0948+0022, Callisto, and J1058+0133.

Based on ALMA data from another program (PI. E. Daddi; Project 2015.1.00260), one target (PACS-472; R.A. = 10:00:08.95, decl. = 02:40:10.8) has a clear CO emission line

Table 1
Starburst Sample^a

ID	R.A.	Decl.	z_{spec}^b	$\log M_{\text{stellar}}^c$ (M_{\odot})	$L_{\text{IR}}^{\text{Total}}$ (L_{\odot})	SFR (IR) ($M_{\odot} \text{ yr}^{-1}$)	$\log \delta_{\text{MS}}^d$
787	10:02:27.95	02:10:04.4	1.5234	10.56	12.83 ± 0.04	991^{+96}_{-87}	0.8
197	10:01:34.46	01:58:47.7	1.6005	10.75	12.58 ± 0.06	551^{+83}_{-72}	0.7
491	10:00:05.16	02:42:04.7	1.6366	10.35	12.50 ± 0.08	463^{+96}_{-80}	0.9
224	09:58:56.51	02:03:47.5	1.6826	10.05	12.51 ± 0.10	467^{+121}_{-96}	1.2
251	10:02:39.63	02:08:47.2	1.5847	10.05	12.45 ± 0.10	409^{+101}_{-81}	1.2
837	10:00:36.31	02:21:17.5	1.6552	9.98	11.72 ± 0.12	76^{+25}_{-19}	0.5
299	09:59:41.31	02:14:42.8	1.6467	10.09	12.53 ± 0.15	497^{+208}_{-147}	1.2
325	10:00:05.53	02:19:42.83	1.6557	10.39	12.05 ± 0.22	162^{+106}_{-64}	0.4
819	09:59:55.54	02:15:11.46	1.4449	10.37	12.56 ± 0.05	533^{+68}_{-60}	1.0
830	10:00:08.73	02:19:02.47	1.4610	10.68	12.45 ± 0.06	412^{+62}_{-54}	0.6
867	09:59:38.10	02:28:57.06	1.5673	10.75	12.38 ± 0.18	353^{+179}_{-119}	0.5
164	10:01:30.42	01:54:12.50	1.6489	9.94	12.33 ± 0.28	309^{+274}_{-145}	1.1

Notes.

^a The horizontal line differentiates between galaxies observed in Cycles 1 (below) and 3 (above) with the exception of PACS-164, which was observed with NOEMA.

^b Spectroscopic redshifts are based on H α and have errors $\sigma_{\Delta z/(1+z)} = 1.8 \times 10^{-4}$.

^c $\sigma_M \sim 0.07$ dex error on the stellar mass (Ilbert et al. 2015).

^d $\delta_{\text{MS}} = \text{sSFR}/(\text{sSFR}_{\text{MS}})$.

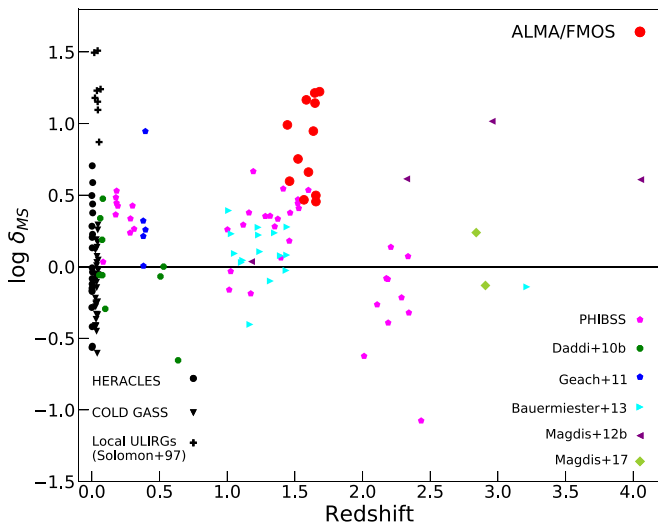


Figure 3. Compilation of samples from the literature used in this analysis with their redshifts and elevation above the MS as parameterized by $\delta_{\text{MS}} = \text{sSFR}/(\text{sSFR}_{\text{MS}})$ and described in Section 4. Our ALMA sample of 12 starbursts is shown by the larger red circles. Further details are provided in the text, including a more extensive set of references to these data sets.

detection in Band 6 (private communication) that places the object at a higher redshift than that based on our FMOS spectra. This misidentification explains a lack of a CO detection at the expected observed frequency; thus, we remove it from the sample. In Table 1, we list the targets and give their physical characteristics (e.g., redshift, stellar mass, SFR).

Analysis of the interferometric data set is carried out using the standard analysis pipeline available with CASA Version 4.6 (McMullin et al. 2007). We first generate an image of the CO emission using the task “immoments” with a channel (i.e., velocity) width encompassing the full line profile as given in Table 2. The emission is then modeled with an elliptical Gaussian using the CASA tool “imfit” that returns a source centroid, deconvolved source size, and integrated flux. As a precaution, we confirm these measurements by fitting the

emission in the uv -plane and through an independent effort using GILDAS available in the MAPPING package.

4. Results

We detect CO at signal-to-noise ratio (S/N) > 7 in five out of six galaxies observed in Cycle 3 (Figure 4; Table 2). The line intensities (I_{CO}) span a range of 0.26 – $1.64 \text{ Jy km s}^{-1}$, with the brightest source in CO emission attributed to our most extreme outlier from the MS (PACS-787; $\text{SFR} = 991 M_{\odot} \text{ yr}^{-1}$). In Figure 5, the velocity profiles of the CO detections are shown in bins of either 100 or 200 km s^{-1} . The majority have significant detections across multiple velocity bins. Overall, the strength of the CO emission is indicative of large amounts of molecular gas out of which deeply embedded stars are forming (see Section 4.2).

All five sources with CO detections are essentially unresolved with the beam sizes given in Table 2. However, we were able to measure a size for PACS-787 of $1''.96 \pm 0''.54$ (16.6 kpc ; FWHM – major axis) \times $1''.02 \pm 0''.39$ (8.6 kpc ; FWHM – minor axis) based on an elliptical Gaussian fit. We now know that the CO (5–4) emission from PACS-787, based on higher-resolution imaging with ALMA in Band 6, is nearly equally distributed between two galaxies undergoing a major merger, each with compact ($r_{1/2} \sim 1 \text{ kpc}$) disks and having a separation of 8.6 kpc (Silverman et al. 2018).

PACS-837 does not have significant emission in either CO or the continuum, although there is a tentative CO detection ($0.42 \pm 0.20 \text{ mJy}$) of 2.1σ significance at the expected spatial location and redshift ($z_{\text{CO}} = 1.6569$). For these reasons, we include a panel for this object in Figures 4 and 5. In subsequent analyses, we have derived a 3σ upper limit that places important constraints on our characterization of the CO properties of the sample since it should have been detected at a higher significance if it had CO properties similar to starburst galaxies given their L_{TIR} .

Below, we present derived quantities such as CO luminosity, gas mass, and gas depletion time as a function of SFR and stellar mass. To aid in the interpretation of our results, we also

Table 2
ALMA Cycle 3 CO (2–1) Measurements

ID	R.A. (CO)	Decl. (CO)	z_{CO}^a	I_{CO}^b	Δv^c	L'_{CO}^d	Beam Size ^e	σ_{rms}^f
787	10:02:27.954	+02:10:04.40	1.5249	1.64 ± 0.20	600	10.69	2.67×1.79 (67.0)	0.085
197	10:01:34.461	+01:58:47.69	1.6016	1.086 ± 0.088	700	10.55	2.11×1.79 (–69.6)	0.117
491	10:00:05.164	+02:42:04.69	1.6358	0.295 ± 0.038	300	10.00	2.16×1.73 (–69.0)	0.067
224	09:58:56.515	+02:03:47.70	1.6826	0.262 ± 0.034	400	9.98	2.39×2.02 (63.3)	0.026
251	10:02:39.626	+02:08:47.19	1.5863	0.413 ± 0.040	700	10.12	2.36×2.01 (62.4)	0.040
837	10:00:36.233	+02:21:18.08	1.6572	0.127 ± 0.061	300	<9.66	2.38×2.02 (62.8)	0.026

Notes.^a $\sigma_z = 0.0003\text{--}0.0004$.^b Units of Jy km s^{-1} .^c Full width of the CO line at zero intensity in units of velocity (km s^{-1}).^d Log base 10; units of $\text{K km s}^{-1} \text{pc}^2$.^e Units of arcseconds (position angle in degrees).^f Units of $\text{Jy beam}^{-1} \text{km s}^{-1}$.

present these measurements normalized to the expected value for MS galaxies at their respective redshift and stellar mass using average relations available from the literature. In particular, the expected value of the CO luminosity for MS galaxies ($\langle L'_{\text{CO,MS}} \rangle$) is based on Equation (1) of Sargent et al. (2014), which depends on the L_{TIR} of each galaxy. A similar relation is given in Equation (4) of Sargent et al. (2014) for the mean molecular gas mass of MS galaxies as a function of SFR. We then compare these normalized quantities as a function of their sSFR relative to the mean sSFR ($\langle \text{sSFR}_{\text{MS}} \rangle$) of MS galaxies at an equivalent redshift and stellar mass such that $\delta_{\text{MS}} = \text{sSFR} / \langle \text{sSFR}_{\text{MS}} \rangle$. This normalization scheme applies to all figures that present the measurements in terms of δ_{MS} including Figure 3. For our ALMA starbursts at $z \sim 1.6$, we use the MS relation as given in Equation (1). To show the effect of using a different parameterization of the MS at $z \sim 1.6$, we also show results using the definition of the MS from Speagle et al. (2014) in the following subsection only. For the comparison sample, we use the parameterization of sSFR (M_{stellar}, z) as given in Equation (A1) of Sargent et al. (2014).

4.1. CO-to-TIR Luminosity Relation

We revisit the relation between the CO luminosity L'_{CO} and L_{TIR} for starbursts as reported by many studies (e.g., Magdis et al. 2012a; Sargent et al. 2014). For our sample, the CO line luminosity is calculated as follows and given in units of $\text{K km s}^{-1} \text{pc}^2$:

$$L' = 3.25 \times 10^7 \times S_{\text{CO}} \Delta v \frac{D_L^2}{(1+z)^3 \nu_{\text{obs}}^2}, \quad (2)$$

where $S_{\text{CO}} \Delta v$ is the line flux in units of Jy km s^{-1} , D_L is the luminosity distance in Mpc, and ν_{obs} is the observed line frequency in GHz. We then convert the luminosity to the value of the $J = 1 - 0$ transition using $L'_{\text{CO}(2-1)} / L'_{\text{CO}(1-0)} = 0.85$ (Daddi et al. 2015). As mentioned above, L_{TIR} is determined from an integral of the best-fit model over 8–1000 μm , which tightly correlates with the obscured SFR (Kennicutt 1998). Before introducing additional uncertainties with converting to physical units, we point out that these quantities L'_{CO} and L_{TIR} are essentially based on flux measurements and distance measures from their spectroscopic redshifts, with the exception

of converting between CO transitions. This allows us to establish observable trends independent of conversion factors to quantities such as gas mass and SFR, which will be presented in the following section.

We plot L'_{CO} versus L_{TIR} for our starburst galaxies (Figure 6(a)) and a comparison sample of galaxies as described in Section 2.4. The well-established linear relation (solid line) is seen for which all MS galaxies lie along (Sargent et al. 2014). As presented by others (e.g., Solomon et al. 1997; Daddi et al. 2010b; Genzel et al. 2010), the local ULIRGs (shown by the blue plus signs) are offset from this relation with lower CO luminosities at a given L_{TIR} as further illustrated by a parallel relation (dashed line), a factor of $3 \times$ below the MS relation. Pertaining to our high- z starbursts, the entire ensemble (large red symbols) is visibly displaced to lower L'_{CO} than expected for MS galaxies at their respective L_{TIR} , even though a few galaxies do fall close to (but below) the mean relation for MS galaxies. While some of our high- z starbursts lie along this parallel track (dashed line) to the MS, similar to the local ULIRGs, our sample appears to fill in the region between the MS and local starburst galaxies and thus is not as extreme in its difference from the MS galaxies.

In Figure 6(b), we illustrate that the decrement in CO luminosity for high- z starbursts is larger with increasing boost in SFR above the MS by plotting this quantity as a function of sSFR, with each quantity normalized to the mean value of the star-forming MS population as described above. As shown in the figure, there is a general decline in $L'_{\text{CO}} / \langle L'_{\text{CO,MS}} \rangle$ with increasing δ_{MS} . Since there are no clear signs of a gap in the ratio $L'_{\text{CO}} / \langle L'_{\text{CO,MS}} \rangle$ between the MS and starburst galaxies, we argue that this decline is continuous in these parameters. This result appears to be valid even if using the parameterization of the MS at $z \sim 1.6$ from Speagle et al. (2014) that shows slightly higher boost factors. These results are likely enabled by our selection of starbursts that includes those with milder offsets from the MS as compared to the local ULIRGs, thus effectively filling the gap seen in other studies (Daddi et al. 2010b; Genzel et al. 2010).

Based on a Kolmogorov–Smirnov test, there is only a probability of 0.07% of randomly drawing values of $L'_{\text{CO}} / \langle L'_{\text{CO,MS}} \rangle$ from the distribution of normal star-forming galaxies that matches the distribution of our starbursts with $\text{sSFR} / \langle \text{sSFR}_{\text{MS}} \rangle > 4$. Furthermore, the difference in the mean

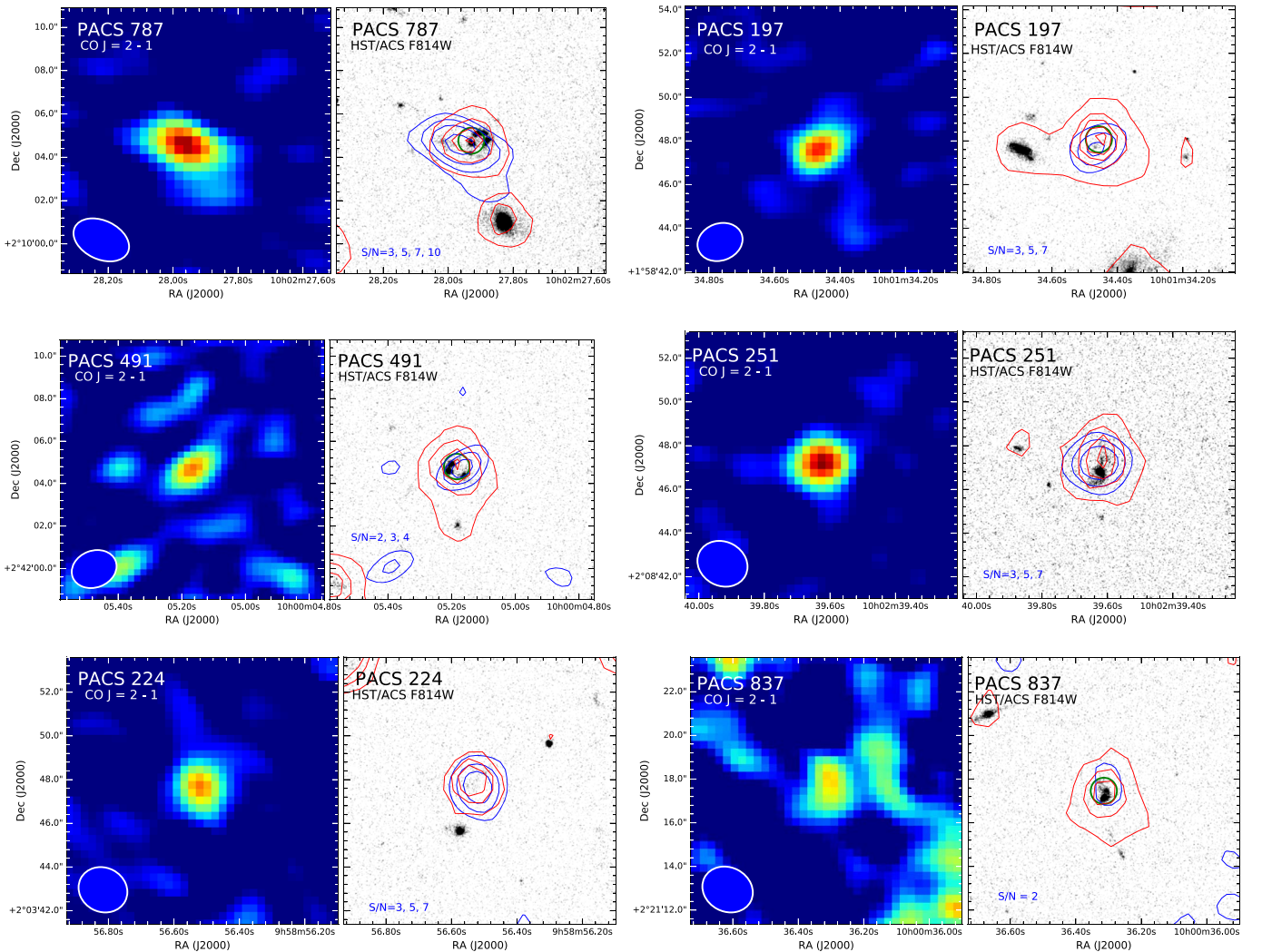


Figure 4. CO (2–1) maps of six high- z starbursts observed by ALMA in Cycle 3 (color panels on left). The shape of the ALMA beam is displayed in each panel. The minimum flux level is set at $0.5 \times \sigma_{\text{rms}}$ (Table 2). Right panels: grayscale images of each starburst, from the COSMOS *HST/ACS* F814W mosaics (Koekemoer et al. 2007). CO emission is indicated with blue contours in steps of S/N as shown in each panel. Red contours indicate *Spitzer/IRAC* 3.6 μm detections that are typically cospatial with the CO emission, indicating a close association between gas, obscured star formation, and the peak of the stellar mass distribution. The green circle in each *HST* panel marks the position of the FMOS fiber with a diameter of $1''/2$.

of the $L'_{\text{CO}}/\langle L'_{\text{CO,MS}} \rangle$ distribution between typical galaxies and our starburst sample is significant at the 13σ level. This decline of the $L'_{\text{CO}}/L_{\text{TIR}}$ ratio suggests that starburst galaxies are able to sustain high levels of star formation without the need for a larger gas supply, hence supporting a scenario of a higher SFE ($=\text{SFR}/M_{\text{gas}}$; see below) *in a continuous manner from MS galaxies to the most extreme starbursts* as seen in the local ULIRGs. As an alternative explanation, if molecular clouds in starbursts are simply denser than MS galaxies, the reduced CO luminosity may be attributed to the lower surface area of the clouds since CO lines are optically thick.

4.2. Total Molecular Gas Mass

We expand on the above results by converting the CO luminosity, $L'_{\text{CO}(1-0)}$, to the total molecular gas mass (M_{gas}) using a scale factor (α_{CO}) as routinely done in the literature (Bolatto et al. 2013). A single value of this factor ($\alpha_{\text{CO}} = 1.3 M_{\odot}/(\text{K km s}^{-1} \text{pc}^2)$) is applied across our starburst sample. This estimate of α_{CO} is based on a dynamical assessment of the gas mass using a higher-resolution

observation with ALMA of CO (5–4) emission from PACS-787 (Silverman et al. 2018). This value of α_{CO} is similar to that reported in the literature for local (Sargent et al. 2014) and high-redshift starburst galaxies (e.g., Hodge et al. 2015), including two other cases in our sample (Silverman et al. 2015a). We recognize that different values of α_{CO} have been assumed in the literature. For example, Tacconi et al. (2017) use a single value of $\alpha_{\text{CO}} = 4.36$ (slightly depending on metallicity) for all MS and starburst galaxies alike (i.e., for all δ_{MS} values). To assess the impact of this difference on our results, we present our analysis in all subsequent plots also with this higher value for $\alpha_{\text{CO}} = 4.36 M_{\odot}/(\text{K km s}^{-1} \text{pc}^2)$ and discuss the implications in Section 5. We highlight that the uncertainty on the appropriate value of α_{CO} is the dominant systematic error in our measure of derived properties that include the molecular gas mass.

In Figure 7(a), we plot the molecular gas mass as a function of stellar mass for our high- z starbursts along with comparison samples (Section 2.4). Gas masses for the ALMA starbursts (filled red circles) range between 1.4 and $7.5 \times 10^{10} M_{\odot}$,

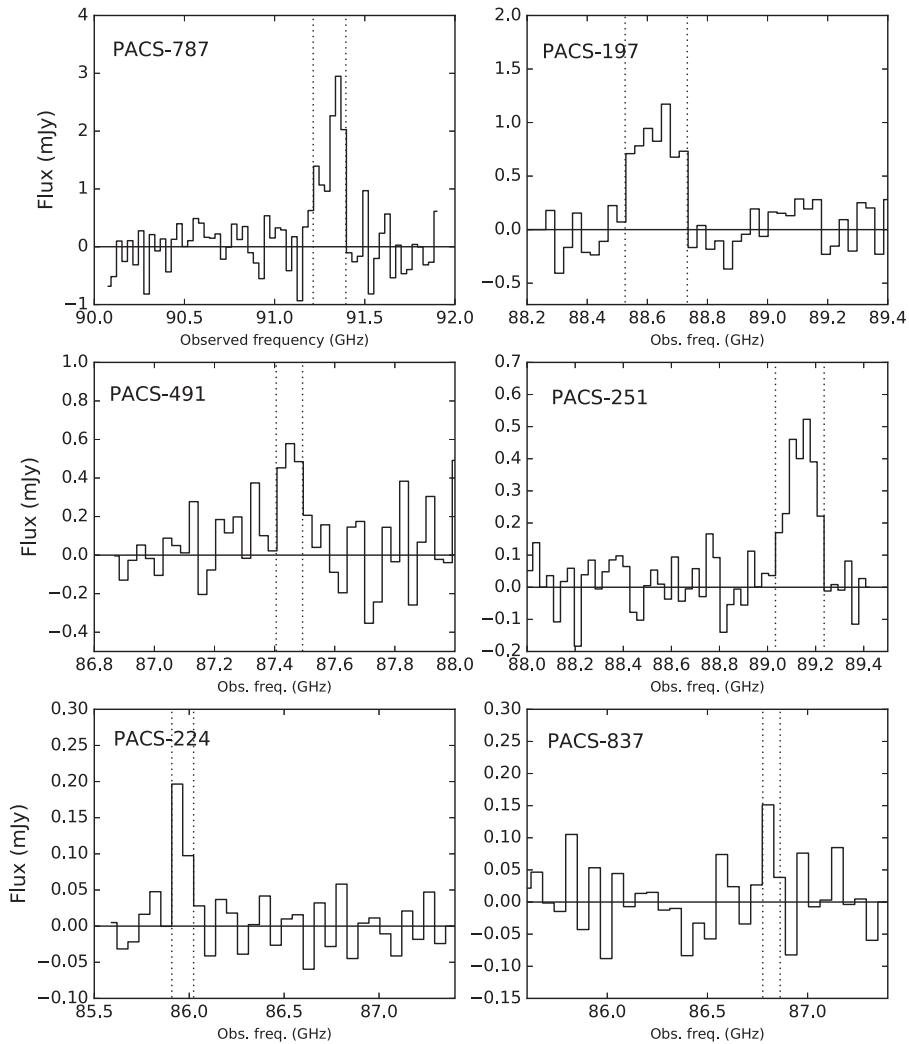


Figure 5. CO (2–1) spectra for the Cycle 3 ALMA sample. Observed velocity channels are binned in intervals of 100 (PACS-787, 197, 491, 251) or 200 (PACS-224, 837) km s^{-1} . Spectra were extracted with different apertures for each source chosen to closely represent the unresolved (i.e., peak) CO emission. The vertical dotted lines indicate the velocity interval over which the total CO luminosity is measured as given in Table 2. The horizontal line marks the zero level.

comparable to or even exceeding their mass in stars, as indicated by the slanted solid line. As expected, these gas masses are substantially higher than low-redshift SF MS galaxies (gray circles) and starbursts (blue plus signs). High- z SF MS galaxies (small triangles in purple) and the limited high- z starburst samples (blue squares), with α_{CO} estimates, have similar values of $M_{\text{gas}}/M_{\text{stellar}}$ to our ALMA starbursts.

In Figure 7(b), we compare the ratio $\mu = M_{\text{gas}}/M_{\text{stellar}}$ relative to that of SF MS galaxies (μ_{MS}), to our reference samples and the best-fit analytic expression given in Tacconi et al. (2017) as indicated by the green slanted line. The relative gas fraction is plotted as a function of the boost in sSFR relative to SF MS galaxies, as done in Figure 6(b). By comparing the ALMA starbursts (filled red circles) to the relation from Tacconi et al. (2017), high- z starbursts have similar gas content to the more typical star-forming galaxies (Daddi et al. 2010a; Tacconi et al. 2010), counter to studies that favor higher gas fractions (Genzel et al. 2015; Scoville et al. 2016; Lee et al. 2017). We remark that this result is based on the implementation of $\alpha_{\text{CO}} = 1.3 M_{\odot}/(\text{K km s}^{-1} \text{pc}^2)$. The use of a higher value of $4.36 M_{\odot}/(\text{K km s}^{-1} \text{pc}^2)$ for our high- z starbursts, as discussed further below, results in close agreement with the Tacconi et al. (2017) relation.

4.3. Gas Depletion Times/Star Formation Efficiency

With estimates of the gas mass, we can measure the efficiency of forming stars ($\text{SFE} = \text{SFR}/M_{\text{gas}}$) and its inverse, the time to deplete its gas reservoir if forming stars at a constant rate ($\tau_{\text{depl}} = 1/\text{SFE}$) without gas replenishment. In Figure 8(a), we plot τ_{depl} as a function of SFR, comparing our high- z starbursts (filled red circles) to the reference samples described above. We find that our starburst sample has short gas depletion times ranging from ~ 40 to 100 Myr (Table 3) that fall significantly offset from MS galaxies (~ 0.4 – 1 Gyr) at a given SFR.

In Figure 8(b), the depletion times of our high- z starbursts drop even further from that of SF MS galaxies with increasing distance above the SF MS as quantified as δ_{MS} . The departure is still evident when comparing our data (red filled circles) to the analytical relation given in Tacconi et al. (2017) as indicated by the slanted green line. Based on these results, we reinforce our hypothesis put forward in Silverman et al. (2015a) that the SFE (or gas depletion time) increases (decreases) with distance above the MS stronger than any increase in the gas fraction, even if a mild increase is present.

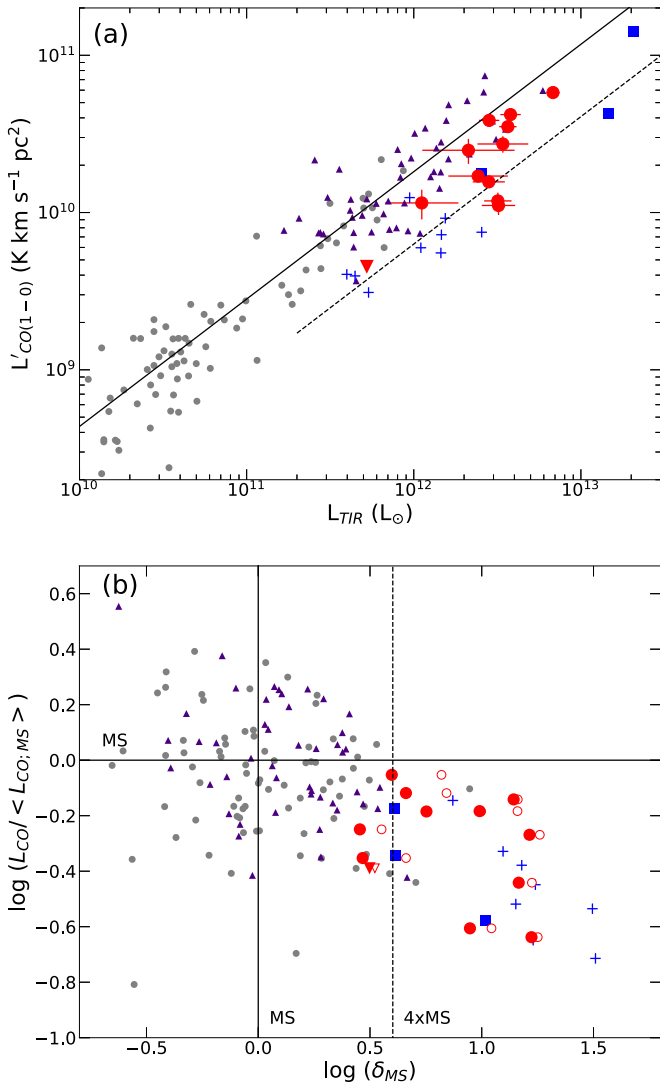


Figure 6. (a) CO (1–0) luminosity (L'_{CO}) as a function of total infrared luminosity (L_{TIR}) and (b) CO luminosity and sSFR both normalized to the mean value of typical star-forming MS galaxies as described in the text. Red (filled) data points mark our 12 high- z starbursts. The inverted triangle represents the 3σ upper limit for PACS-837. The red open symbols are equivalent to the red filled symbols with the exception that the value of δ_{MS} is in reference to the star-forming MS of Speagle et al. (2014). From the compilation of Sargent et al. (2014) as described in Section 2.4, the small gray circles (purple triangles) represent star-forming MS galaxies at $z < 1$ ($z > 1$), while blue symbols show the local ULIRGs (plus signs) and high- z starbursts (filled blue squares). In panel (a), the best-fit relation to MS galaxies is shown by the solid line with a similar relation shifted $3\times$ lower to indicate the location of local ULIRGs (Sargent et al. 2014).

5. Discussion

As with all CO studies of the molecular gas content, the essential inescapable issue is the conversion factor α_{CO} . As presented above, we have used a value of $1.3 M_{\odot}/(\text{K km s}^{-1} \text{pc}^2)$ based on a dynamical mass estimate from a higher-resolution CO image of PACS-787 (Silverman et al. 2018) that is broadly consistent with estimates from two other cases in our high- z starburst sample (Silverman et al. 2015a). This value is not too dissimilar to that used for local starbursts (i.e., $\alpha_{CO} = 0.8 M_{\odot}/(\text{K km s}^{-1} \text{pc}^2)$; Bolatto et al. 2013) and even actively star-forming regions of $z \sim 2$ galaxies (e.g., Tadaki et al. 2017).

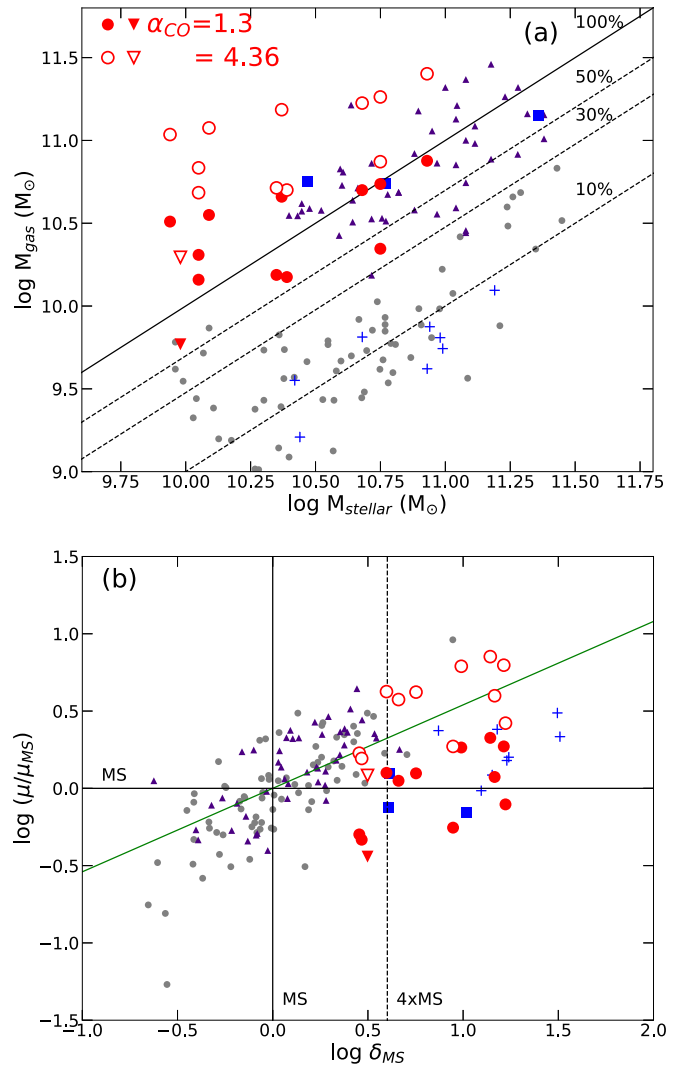


Figure 7. Molecular gas mass of high- z starbursts. (a) Log of the molecular gas mass as a function of the log of the stellar mass. Our ALMA starburst sample is shown by filled (open) red symbols, assuming the value of α_{CO} to be 1.3 (4.36) $M_{\odot}/(\text{K km s}^{-1} \text{pc}^2)$, and an inverted triangle indicates an upper limit on the gas mass. Slanted lines indicate increasing values of $M_{gas}/M_{stellar}$ as marked. Additional starburst galaxies from the literature (listed in Section 2.4) with α_{CO} measurements are included at low (blue plus signs) and high (blue squares) redshift. Small gray circles represent low-redshift ($z < 0.3$) MS star-forming galaxies, while high- z ($z > 1$) MS galaxies are marked by purple triangles. (b) Molecular gas mass vs. sSFR, with both quantities normalized to the mean value of SF MS galaxies, at the equivalent stellar mass. The parameter on the abscissa, δ_{MS} , is the same as in Figure 6(b). The slanted green line is the average relation as reported in Tacconi et al. (2017). The gray circles in the bottom panel represent all SF MS galaxies at $z < 1$, a less restrictive sample than in the top panel.

As mentioned above, our assessment of α_{CO} relies on a $0''.3$ resolution map of PACS-787, acquired through a Cycle 4 ALMA program, which has revealed two galaxies in the process of merging with CO detections for each galaxy at a high S/N. While in an early stage of a merger, both galaxies have maintained their molecular gas disks, thus enabling us to extract the gas mass from the dynamical mass with assumptions given in the aforementioned paper. It is possible that the value of the conversion factor used here induces a systematic level of uncertainty on the resulting gas masses. One issue may be that there is not definitive evidence for all starburst events within our sample as being triggered by a major merger, particularly at the same stage as PACS-787 in an evolutionary merger

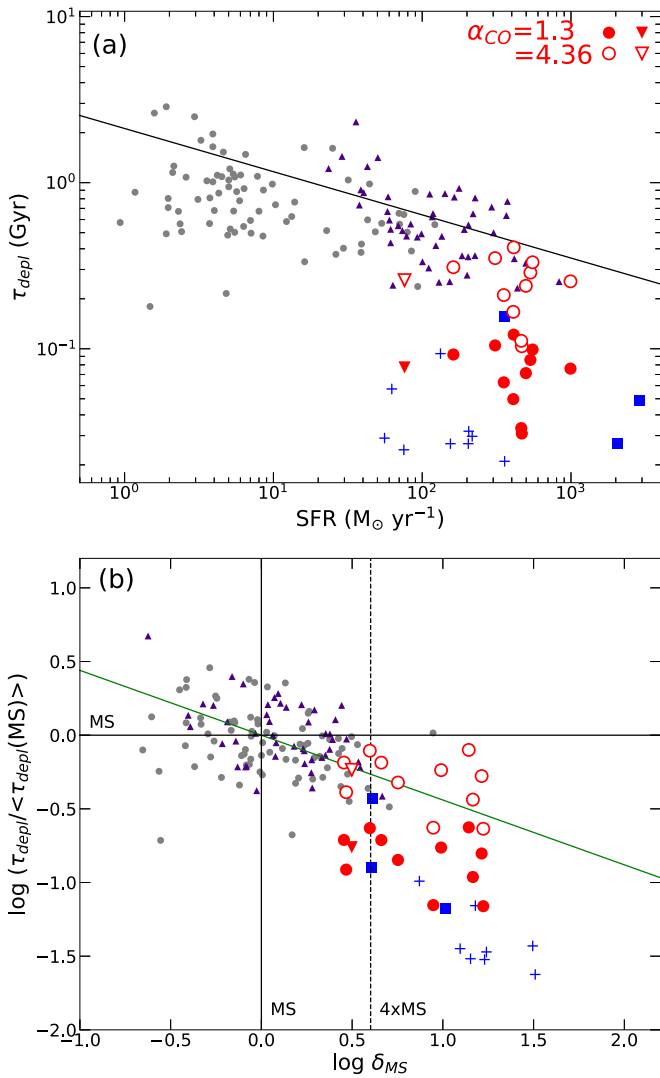


Figure 8. (a) Gas depletion time ($\tau_{\text{depl}} = M_{\text{gas}}/\text{SFR}$) of high-redshift starbursts as a function of their SFR. The slanted black line is the best-fit relation from Sargent et al. (2014). (b) Gas depletion time vs. sSFR with both normalized to average values for SF MS galaxies. An analytic form of this relation is provided by Tacconi et al. (2017) and shown here in green. Symbols in both panels are the same as in Figure 6.

Table 3
Derived Physical Properties

ID	$\log M_{\text{gas}}^{\text{a}}$	$M_{\text{gas}}/M_{\text{stellar}}$	$\tau_{\text{depl}}^{\text{b}}$
787	10.88	0.9	76
197	10.74	1.0	99
491	10.19	0.7	33
224	10.16	1.3	31
251	10.31	1.8	50
837	<9.77	<0.6	<77
299	10.55	2.9	71
325	10.17	0.6	92
819	10.66	1.9	86
830	10.70	1.0	121
867	10.34	0.4	63
164	10.51	3.7	105

Notes.

^a Units of M_{\odot} and based on $\alpha_{\text{CO}} = 1.3$.

^b $\tau_{\text{depl}} = M_{\text{gas}}/\text{SFR}$; units Myr.

sequence. However, the majority of starbursts in our ALMA sample do have multiple emitting components in the rest-frame ultraviolet (e.g., PACS-819, 830, 491) and optical (e.g., PACS-867, 299, 325, 164) as detected by the *Hubble Space Telescope* (*HST*) Advanced Camera for Surveys (ACS) and *Spitzer* (see Figure 2 of Silverman et al. 2015a); thus, we presume that most of our starbursts are undergoing some sort of an interaction or merging event. Still, there is always the possibility that the conversion factor may be larger. Therefore, we explore the impact of a higher conversion factor on our results. Tacconi et al. (2017) are advocating the application of a more universal value ($\alpha_{\text{CO}} = 4.36 M_{\odot}/(\text{K km s}^{-1} \text{ pc}^2)$, plus a metallicity dependence) for the analysis of large samples.

First, we assess the impact on the gas fractions and depletion times if the CO-to-H₂ conversion factor is $4.36 M_{\odot}/(\text{K km s}^{-1} \text{ pc}^2)$. This value is similar to star-forming regions in our own Milky Way and nearby local galaxies (Bolatto et al. 2013). As a result, the gas fractions, expressed here as $M_{\text{gas}}/M_{\text{stellar}}$, will be appreciably higher with most above unity since they will be dominated in their mass budget by the molecular gas. This is seen in Figure 7(a), where gas mass is plotted as a function of the stellar mass. In Figure 7(b), the ratio of the gas mass to stellar mass is plotted as a function of δ_{MS} as defined above. The new gas masses (open red circles) are found to be in closer agreement to the relation from Tacconi et al. (2017) that shows an increase in gas mass fraction, as compared to SF MS galaxies, with their boost in sSFR above the MS. In this scenario, the boost in SFR for starbursts would be attributed to both an increase in the gas fraction and the SFE. This is seen in Figure 8(b), where the depletion times are significantly shorter than SF MS galaxies for $\alpha_{\text{CO}} = 1.3 M_{\odot}/(\text{K km s}^{-1} \text{ pc}^2)$, while a higher CO-to-H₂ conversion factor results in depletion times that are relatively higher but still slightly shorter than MS galaxies at all redshifts.

In general, any application of a scale factor to a set of measurements based on a well-selected statistical sample should be based on an independent assessment of the validity of this factor using a representative subset of the sample. To achieve such assurance in the applicable value of α_{CO} to high-*z* starbursts (selected as outliers above the star-forming MS), we have obtained ALMA observations at a spatial resolution of $\sim 1''$ or below for three starbursts (Silverman et al. 2015a, 2018) that provide broadly consistent results for a low value of α_{CO} . However, we note that the normalization of the dynamical mass estimate and the method to assess the errors differ between PACS-819/830 and PACS-787. For both cases, there remains uncertainty in these estimates, and further effort with ALMA is needed at higher resolution to improve the quality of the size measurements, inclinations, and presence of any inflow/outflow components to the CO emission.

In light of these uncertainties, we are confident that the main results of this study are robust when considering the observed quantities irrespective of the value of α_{CO} . In Figure 6(a), it is clear that the high-*z* starbursts are offset from the relation between L'_{CO} and L_{TIR} for MS galaxies. There appears to be a continuous decline in the amount of CO-emitting gas with distance above the MS (Figure 6(b)), thus supporting models of such behavior (Narayanan et al. 2012).

6. Final Remarks

The question whether starburst outliers from the MS owe their higher sSFR to a higher gas fraction or to a higher SFE (or

combination thereof) remains an unsettled issue in the current literature. For example, Sargent et al. (2014) and Silverman et al. (2015a) argue for a substantially higher SFE, with even sub-MS gas fractions, whereas Scoville et al. (2016) support the opposite notion of starbursts being primarily driven by a higher gas fraction in outliers compared to MS galaxies. More recently, scaling relations have been proposed that tend to combine both effects. Thus, Scoville et al. (2017) derive scaling relations from their ALMA dust continuum observation according to which

$$\frac{\text{SFR}}{M_{\text{gas}}} = \text{SFE} \propto \delta_{\text{MS}}^{0.70} \quad (3)$$

and

$$\mu = \frac{M_{\text{gas}}}{M_{\text{stellar}}} \propto \delta_{\text{MS}}^{0.32} M_{\text{stellar}}^{-0.7} \quad (4)$$

respectively, from Equations (7) and (6) of Scoville et al. (2017). Therefore, the elevation of the sSFR over the MS (δ_{MS}), at fixed stellar mass, is attributed to a combination of both a higher gas fraction and a higher SFE, scaling as $\sim\mu^3$ and $\sim\text{SFE}^{1.4}$, respectively. Given that the gas fraction is higher in MS lower-mass galaxies (scaling as $M_{\text{stellar}}^{-0.7}$), upon a major merger a galaxy would find itself with a higher gas fraction compared to an MS galaxy with a stellar mass equal to the combined stellar mass of the merger, which, according to Scoville et al., explains the higher gas fraction that they derive for MS outliers.

The equivalent scaling relations given by Tacconi et al. (2017) using primarily CO data are somewhat different:

$$\frac{\text{SFR}}{M_{\text{gas}}} = \text{SFE} \propto \delta_{\text{MS}}^{0.44} \quad (5)$$

and

$$\mu = \frac{M_{\text{gas}}}{M_{\text{stellar}}} \propto \delta_{\text{MS}}^{0.53} M_{\text{stellar}}^{-0.35} \quad (6)$$

Hence, for starbursting outliers, they find a slightly lower dependence of δ_{MS} on SFE, as compared to Scoville et al. (2017), along with a slightly higher dependence on gas fraction, compared to MS galaxies of the same stellar mass. The higher gas fraction (a factor of ~ 3 for extreme starburst with $\delta_{\text{MS}} = 10$) could not be completely accounted for by simple merging, as above, because of the flatter dependence of μ on the stellar mass along the MS, as from Equations (3) and (5). To account for this higher (molecular) gas fraction, one may invoke some conversion of HI to H₂, as the circumgalactic HI reservoir could be destabilized upon merging. Note that Tacconi et al. (2017) adopt a universal $\alpha_{\text{CO}} = 4.36 M_{\odot}/(\text{K km s}^{-1} \text{pc}^2)$ (scaled down with increasing metallicity), for both MS and MS outliers.

As shown in Figure 7(b), adopting our best-fit value from the dynamical argument $\alpha_{\text{CO}} = 1.3 M_{\odot}/(\text{K km s}^{-1} \text{pc}^2)$ results in gas fractions for starburst galaxies that are on average similar to MS galaxies; hence, the elevation of sSFR is fully attributed to a higher SFE, with $\text{SFE} \sim \delta_{\text{MS}}$, and in extreme starbursts the SFE should be up to ~ 30 times higher than on the MS. Sargent et al. (2014) argue that a lower gas fraction in starbursts would be a natural result of their much shorter gas depletion time $\equiv \text{SFE}^{-1}$, if on average they are caught midway through their

starburst, having already consumed a major fraction of their gas reservoir. This implies that starbursts at high redshifts would nearly double their stellar mass during the starburst, which at first sight may conflict with the constraint according to which on a global scale starbursts contribute just $\sim 15\%$ of star formation (Rodighiero et al. 2011). However, one may argue that only a fraction, say, $\sim 1/3$, of massive galaxies experience a merger-driven starburst.

Adopting $\alpha_{\text{CO}} = 4.36 M_{\odot}/(\text{K km s}^{-1} \text{pc}^2)$ as shown in Figure 7(b), the starbursts fall along the continuous extension from the MS, thus indicative of a single mode of star formation, whereas departures from such relations are more evident when adopting different values of α_{CO} for MS and starburst galaxies. These examples illustrate how much divergence there is from the resulting interpretations of why starburst galaxies have elevated sSFRs, with a major role being played by the infamous α_{CO} .

















We are grateful for the support from the regional ALMA ARCs. J.D.S. was supported by the ALMA Japan Research Grant of NAOJ Chile Observatory, NAOJ-ALMA-0127 and by JSPS KAKENHI Grant Number ‘‘JP18H04346’’. This work was supported by the World Premier International Research Center Initiative (WPI Initiative), MEXT, Japan. C.M., A.R., and G.R. acknowledge support from an INAF PRIN-SKA 2017 grant. W.R. is supported by the Thailand Research Fund/Office of the Higher Education Commission grant No. MRG6080294 and Chulalongkorn University’s CUniverse. G.M. acknowledges support from the Carlsberg Foundation, the ERC Consolidator Grant funding scheme (project ConTEst, grant No. 648179), and a research grant (13160) from Villum Fonden. N.A. is supported by the Brain Pool Program, which is funded by the Ministry of Science and ICT through the National Research Foundation of Korea (2018H1D3A2000902). This paper makes use of the following ALMA data: ADS/JAO.ALMA#2012.1.00952.S, ADS/JAO.ALMA#2015.1.00861.S, and ADS/JAO.ALMA#2016.1.01426.S. ALMA is a partnership of ESO (representing its member states), NSF (USA), and NINS (Japan), together with NRC (Canada), NSC and ASIAA (Taiwan), and KASI (Republic of Korea), in cooperation with the Republic of Chile. The Joint ALMA Observatory is operated by ESO, AUI/NRAO, and NAOJ.

Appendix Location of CO-emitting Regions

In Silverman et al. (2015a), we reported that the CO sources were usually offset from regions of rest-frame UV emission, as seen by the *HST*/ACS observations of COSMOS (Koekemoer et al. 2007; Scoville et al. 2007). However, the centroid of the CO emission was always cospatial with the stellar mass distribution as traced by the *Spitzer*/IRAC 3.6–8 μm bands. To investigate the significance of CO/UV offsets in more detail, we use recently reprocessed *HST*/ACS mosaics (A. Koekemoer 2018, private communication) where the astrometry is directly tied to the International Celestial Reference Frame (ICRF), thereby eliminating uncertainties from possible offsets in older catalogs previously used to align *HST* images. The astrometric comparisons with our new ALMA observations corroborate the significance of CO/UV offsets found in our past results, as shown in Figure 4. For example, PACS 251, 787, and 491 have UV emission (shown by the grayscale image) offset from the CO emission (blue contours) but more closely associated with the IR emission (red contours). In fact,

the other two (PACS 197 and 224) have essentially no emission in the UV while being strongly detected by *Spitzer*. These results are in agreement with our recent studies (Silverman et al. 2015a; Puglisi et al. 2017) and many others on the extremely dusty nature of starbursts (e.g., Smail et al. 2004; Ivison et al. 2010; Chen et al. 2015) where any UV or rest-frame optical emission lines are emitted from regions of relatively low extinction, possibly close to the surface of embedded star-forming regions since the bulk ($\sim 90\%$) of the star formation is only observed at infrared wavelengths or longer.

ORCID iDs

J. D. Silverman  <https://orcid.org/0000-0002-0000-6977>
 W. Rujopakarn  <https://orcid.org/0000-0002-0303-499X>
 E. Daddi  <https://orcid.org/0000-0002-3331-9590>
 A. Renzini  <https://orcid.org/0000-0002-7093-7355>
 G. Rodighiero  <https://orcid.org/0000-0002-9415-2296>
 A. Puglisi  <https://orcid.org/0000-0001-9369-1805>
 M. Sargent  <https://orcid.org/0000-0003-1033-9684>
 C. Mancini  <https://orcid.org/0000-0002-4297-0561>
 J. Kartaltepe  <https://orcid.org/0000-0001-9187-3605>
 D. Kashino  <https://orcid.org/0000-0001-9044-1747>
 A. Koekemoer  <https://orcid.org/0000-0002-6610-2048>
 M. Béthermin  <https://orcid.org/0000-0002-3915-2015>
 G. Magdis  <https://orcid.org/0000-0002-4872-2294>
 T. Nagao  <https://orcid.org/0000-0002-7402-5441>
 M. Onodera  <https://orcid.org/0000-0003-3228-7264>
 D. Sanders  <https://orcid.org/0000-0002-1233-9998>
 F. Valentino  <https://orcid.org/0000-0001-6477-4011>

References

- Bolatto, A. D., Wolfire, M., & Leroy, A. K. 2013, *ARA&A*, 51, 207
 Bolzonella, M., Miralles, J.-M., & Pello, R. 2000, *A&A*, 363, 476
 Bothwell, M. S., Smail, I., Chapman, S. C., et al. 2013, *MNRAS*, 429, 3047
 Bournaud, F., Elmegreen, B., Teyssier, R., et al. 2010, *MNRAS*, 409, 1088
 Bruzual, G., & Charlot, S. 2003, *MNRAS*, 344, 1000
 Carilli, C. L., & Walter, F. 2013, *ARA&A*, 51, 105
 Carleton, T., Cooper, M. C., Bolatto, A. D., et al. 2017, *MNRAS*, 467, 4886
 Casey, C., Narayanan, D., & Coray, A. 2014, *PhR*, 541, 45
 Casey, C. M., Chapman, S. C., Neri, R., et al. 2011, *MNRAS*, 415, 2723
 Casey, C. M., Cooray, A., Killi, M., et al. 2017, *ApJ*, 840, 101
 Chen, C.-C., Smail, I., Swinbank, A. M., et al. 2015, *ApJ*, 799, 194
 Combes, F., García-Burillo, S., Braine, J., et al. 2013, *A&A*, 550, A41
 Daddi, E., Bournaud, F., Walter, F., et al. 2010a, *ApJ*, 713, 686
 Daddi, E., Cimatti, A., Renzini, A., et al. 2004, *ApJ*, 617, 746
 Daddi, E., Dannerbauer, H., Liu, D., et al. 2015, *A&A*, 577, 46
 Daddi, E., Elbaz, D., Walter, F., et al. 2010b, *ApJL*, 714, L118
 Danielson, A. L. R., Swinbank, A. M., Smail, I., et al. 2017, *ApJ*, 840, 78
 Dekel, A., & Burkert, A. 2014, *MNRAS*, 438, 1870
 Di Matteo, T., Springel, V., & Hernquist, L. 2005, *Natur*, 433, 7026
 Downes, D., & Solomon, P. M. 1998, *ApJ*, 507, 615
 Draine, B. T., & Li, A. 2007, *ApJ*, 657, 810
 Elbaz, D., Leiton, R., Nagar, N., et al. 2018, *A&A*, 616, 110
 Fensch, J., Renaud, F., Bournaud, F., et al. 2017, *MNRAS*, 465, 1934
 Geach, J. E., Smail, I., Moran, S. M., et al. 2011, *ApJL*, 730, L19
 Genzel, R., Tacconi, L., Lutz, D., et al. 2015, *ApJ*, 800, 20
 Genzel, R., Tacconi, L. J., Gracia-Carpio, J., et al. 2010, *MNRAS*, 407, 2091
 Hodge, J. A., Riechers, D., Decarli, R., et al. 2015, *ApJ*, 798, 18
 Hopkins, P., Hernquist, L., Cox, T., et al. 2006, *ApJS*, 163, 1
 Ilbert, O., Amouts, S., Le, F., et al. 2015, *A&A*, 579, 2
 Ivison, R. J., Papadopoulos, P. P., Smail, I., et al. 2011, *MNRAS*, 412, 1913
 Ivison, R. J., Smail, I., Dunlop, J. S., et al. 2005, *MNRAS*, 364, 1025
 Ivison, R. J., Smail, I., Papadopoulos, P. P., et al. 2010, *MNRAS*, 404, 198
 Kashino, D., Silverman, J. D., Rodighiero, G., et al. 2013, *ApJL*, 777, L8
 Kashino, D., Silverman, J. D., Sanders, D. B., et al. 2017, *ApJ*, 835, 88
 Kennicutt, R. C., Jr. 1998, *ARA&A*, 36, 189
 Kennicutt, R. C., Jr., & Evans, N. J. 2012, *ARA&A*, 50, 531
 Kimura, M., Maihara, T., Iwamura, F., et al. 2010, *PASJ*, 62, 1135
 Koekemoer, A., Aussel, H., Calzetti, D., et al. 2007, *ApJS*, 172, 196
 Lackner, C., Silverman, J., Salvato, M., et al. 2014, *ApJ*, 148, 137
 Laigle, C., McCracken, H. J., Ilbert, O., et al. 2016, *ApJS*, 224, 24
 Lee, N., Sheth, K., Scott, K. S., et al. 2017, *MNRAS*, 471, 2124
 Leroy, A. K., Walter, F., Sandstrom, K., et al. 2013, *AJ*, 146, 19
 Lotz, J., Davis, M., Faber, S. M., et al. 2008, *ApJ*, 672, 177
 Lutz, D., Poglitsch, A., Altieri, B., et al. 2011, *A&A*, 532, 90
 Magdis, G. E., Daddi, E., Béthermin, M., et al. 2012a, *ApJ*, 760, 6
 Magdis, G. E., Daddi, E., Sargent, M., et al. 2012b, *ApJL*, 758, L9
 Magdis, G. E., Rigopoulou, D., Daddi, E., et al. 2017, *A&A*, 603, A93
 Magnelli, B., Lutz, D., Santini, P., et al. 2012, *A&A*, 539, 155
 McCracken, H., Milvang-Jensen, B., Dunlop, J., et al. 2012, *A&A*, 544, 156
 McMullin, J. P., Waters, B., Schiebel, D., Young, W., & Golap, K. 2007, in ASP Conf. Ser. 376, *Astronomical Data Analysis Software and Systems XVI*, ed. R. A. Shaw, F. Hill, & D. J. Bell (San Francisco, CA: ASP), 127
 Narayanan, D., Bothwell, M., & Romeel, D. 2012, *MNRAS*, 426, 1178
 Papadopoulos, P. P., van der Werf, P., Xilouris, E., Isaak, K. G., & Gao, Y. 2012, *ApJ*, 751, 10
 Puglisi, A., Daddi, E., Renzini, A., et al. 2017, *ApJL*, 838, 18
 Renzini, A., & Peng, Y. 2015, *ApJ*, 801, 29
 Riechers, D. A., Cooray, A., Omont, A., et al. 2011, *ApJ*, 733, 12
 Rodighiero, G., Daddi, E., Baronchelli, I., et al. 2011, *ApJL*, 739, L40
 Rujopakarn, W., Rieke, G., Eisenstein, D. J., & Juneau, S. 2011, *ApJ*, 726, 93
 Saintonge, A., Kauffmann, G., Kramer, C., et al. 2011, *MNRAS*, 415, 32
 Sanders, D. B., & Mirabel, I. F. 1996, *ARA&A*, 34, 749
 Sanders, D. B., Salvato, M., Aussel, H., et al. 2007, *ApJS*, 172, 86
 Sargent, M. T., Béthermin, M., Daddi, E., & Elbaz, D. 2012, *ApJL*, 747, L31
 Sargent, M. T., Daddi, E., Béthermin, M., et al. 2014, *ApJ*, 793, 19
 Schinnerer, E., Smolčić, V., Carilli, C. L., et al. 2007, *ApJS*, 172, 46
 Scoville, N., Abraham, R. G., Aussel, H., et al. 2007, *ApJS*, 172, 38
 Scoville, N., Lee, N., Vanden Bout, P., et al. 2017, *ApJ*, 837, 150
 Scoville, N., Sheth, K., Aussel, H., et al. 2016, *ApJ*, 824, 63
 Silverman, J. D., Daddi, E., Rodighiero, G., et al. 2015a, *ApJL*, 812, L23
 Silverman, J. D., Daddi, E., Rujopakarn, W., et al. 2018, *ApJ*, in press (arXiv:1810.01595)
 Silverman, J. D., Kashino, D., Sanders, D. B., et al. 2015b, *ApJS*, 220, 12
 Smail, I., Capman, S. C., Balin, A. W., & Ivison, R. J. 2004, *ApJ*, 616, 71
 Smolčić, V., Novak, M., Delvecchio, I., et al. 2017, *A&A*, 602, 1
 Solomon, P. M., Downes, D., Radford, S. J. E., & Barrett, J. W. 1997, *ApJ*, 478, 144
 Speagle, J. S., Steinhardt, C. L., Capak, P. L., & Silverman, J. D. 2014, *ApJS*, 214, 15
 Swinbank, A. M., Papadopoulos, P. P., Cox, P., et al. 2011, *ApJ*, 742, 11
 Tacconi, L., Genzel, R., Neri, R., et al. 2010, *Natur*, 463, 781
 Tacconi, L. J., Genzel, R., Saintonge, A., et al. 2017, *ApJ*, 853, 179
 Tacconi, L. J., Neri, R., Genzel, R., et al. 2013, *ApJ*, 768, 74
 Tadaki, K., Kodama, T., Nelson, E. J., et al. 2017, *ApJ*, 841, 25
 Tan, Q., Daddi, E., Magdis, G., et al. 2014, *A&A*, 569, A98
 Tanaka, M., Hasinger, G., Silverman, J. D., et al. 2017, arXiv:1706.00566
 Volonteri, M., Capelo, P. R., Netzer, H., et al. 2015, *MNRAS*, 449, 1470
 Walter, F., Brinks, E., de Blok, W. J. G., et al. 2008, *AJ*, 136, 2563
 Zahid, H. J., Kashino, D., Silverman, J. D., et al. 2014, *ApJ*, 792, 75