



HAL
open science

Quality assessment of data from CHRIS/PROBA

Polina Lemenkova

► **To cite this version:**

Polina Lemenkova. Quality assessment of data from CHRIS/PROBA. [University works] 'Calibration and Validation of Earth Observation Data' MSc student course report, University of Southampton. 2009, pp.1. hal-02023009

HAL Id: hal-02023009

<https://hal.science/hal-02023009>

Submitted on 18 Feb 2019

HAL is a multi-disciplinary open access archive for the deposit and dissemination of scientific research documents, whether they are published or not. The documents may come from teaching and research institutions in France or abroad, or from public or private research centers.

L'archive ouverte pluridisciplinaire **HAL**, est destinée au dépôt et à la diffusion de documents scientifiques de niveau recherche, publiés ou non, émanant des établissements d'enseignement et de recherche français ou étrangers, des laboratoires publics ou privés.



Distributed under a Creative Commons CC0 - Public Domain Dedication 4.0 International License

Quality assessment of data from CHRIS/PROBA

CHRIS (Compact High Resolution Imaging Spectrometer) - new imaging spectrometer carried on board a space platform **PROBA (Project for On Board Autonomy)**
 The satellite was successfully launched in late **October 2001, Sriharikota (India)**

Region of interest – Thorney Island (UK), Chichester harbour
 Chichester harbour has **unique wetland environment** : place for rare bird colonies.
 Monitoring this place - important ecological task for environmental managers

CHRIS/PROBA images characteristics:

- 18 bands
- 7th Oct 2004
- 17m ground resolution
- region: Thorney Island

Quality of CHRIS images is affected by two types of noises (J.C.Garcia, J. Moreno):

- **vertical noise** (vertical stripes; can be corrected by comparing values of neighbouring pixels)
- **horizontal noise** (easy to detect and correct using the horizontal profile of each file)

Correction of noises can be made through **DiELMO 3D Methodology** (J.C.Garcia, J. Moreno)

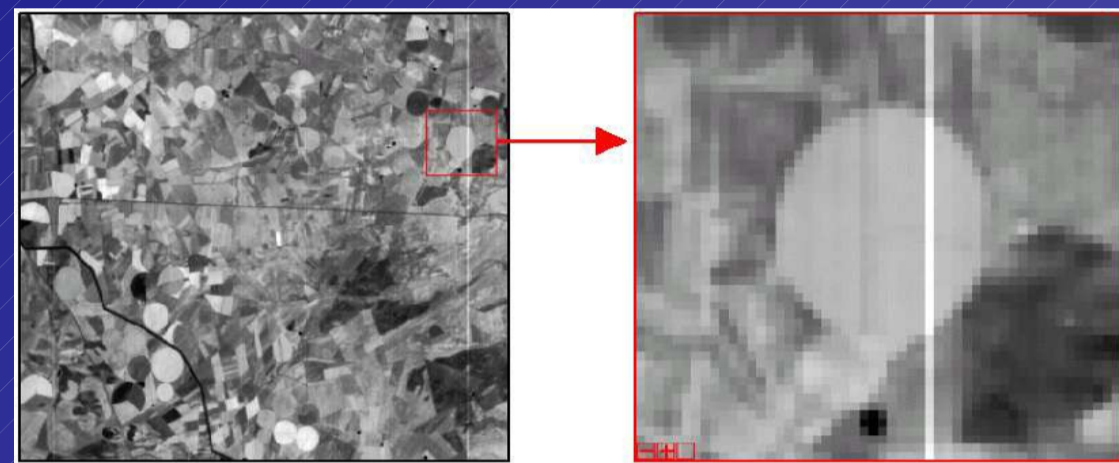


Fig4. Example of vertical noises in CHRIS image
 Photo taken from *Removal of noises* (J.C.Garcia, p.3)

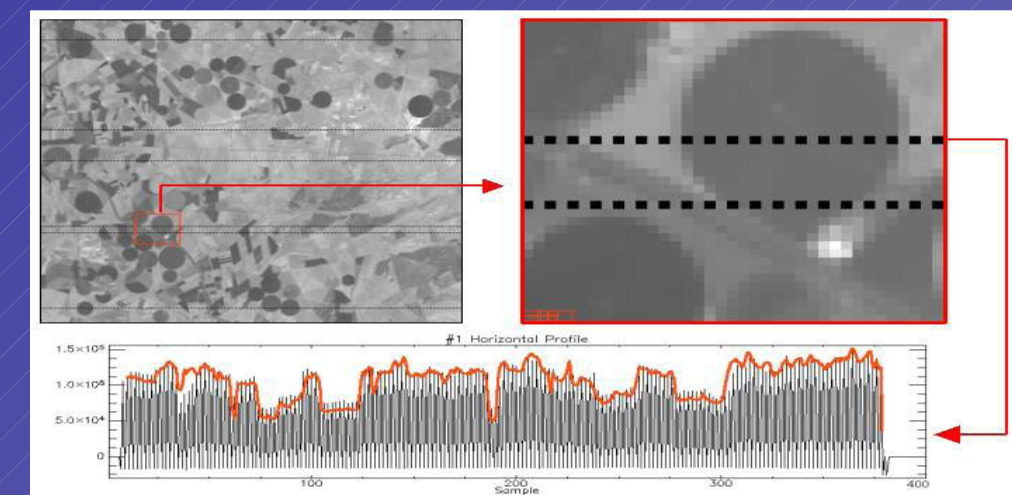
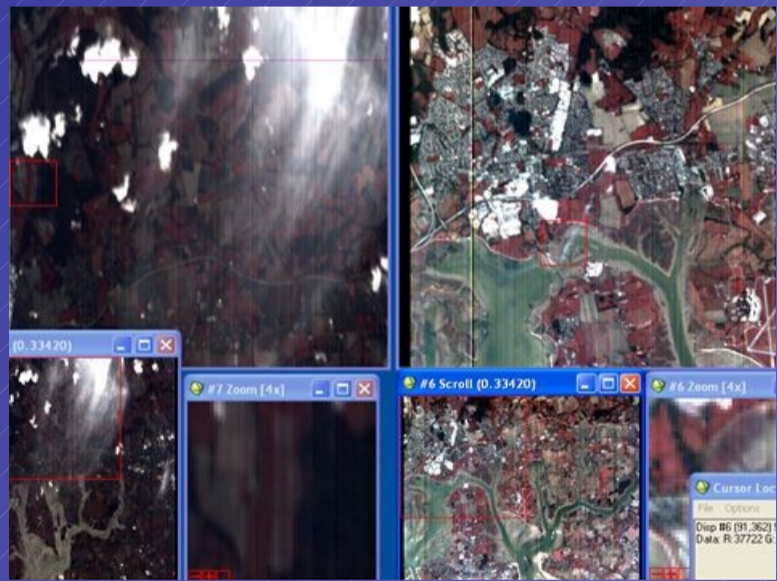


Fig.5. Example of horizontal noises in CHRIS image
 Photo taken from *Removal of noises* (J.C.Garcia, p.1)

For the quality of CHRIS images .hdr files were examined:

- 1) CHRIS...47AO_41.hdr (taken at +36°)
- 2) CHRIS...47A1_41.hdr (taken at -36°)
- 3) CHRIS...47A2_41.hdr (taken at +55°)
- 4) CHRIS...47A3_41.hdr (taken at -55°)
- 5) CHRIS...479F_41.hdr (taken at nadir)

Images taken at the nadir are of good quality, while those at different angles have defects:



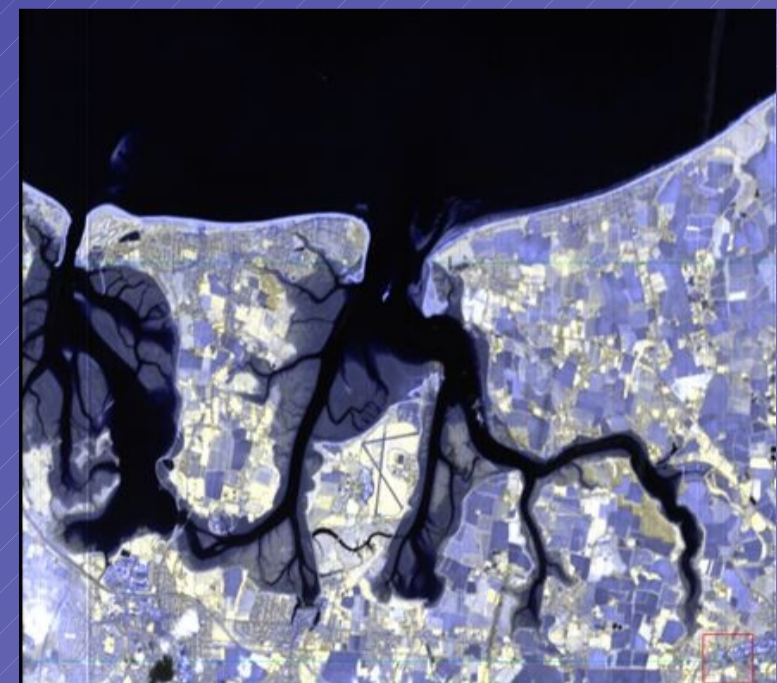
Comparing images taken at +55° dgr (47A2_41) and nadir images (479F_41) right



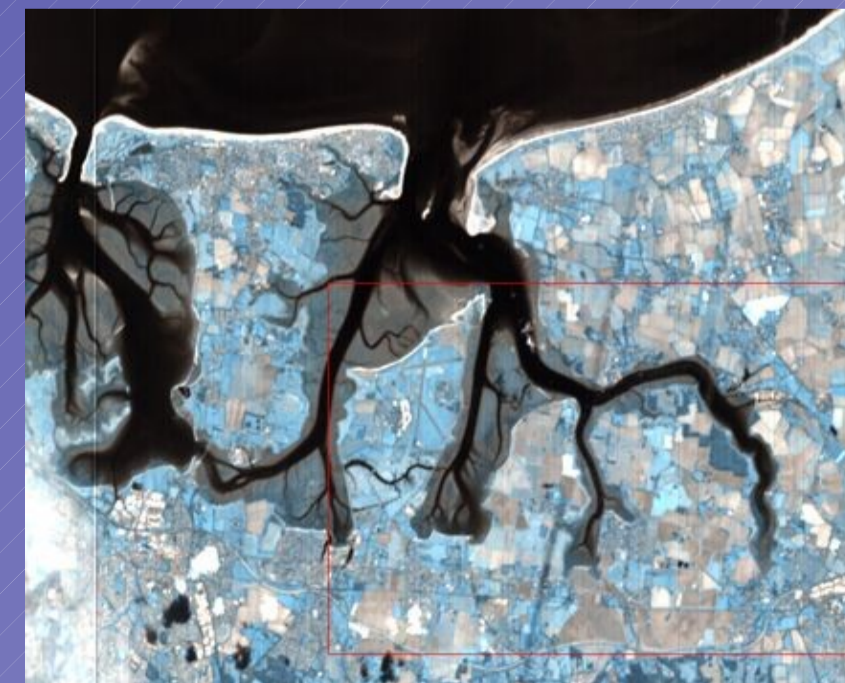
Images taken at +36° dgr (47A0_41), left and nadir images (479F_41) right.



Images taken at +36° and -36°dgr (CHRIS 47A0_41 and CHRIS 47A1_41) both have inverted direction.



Inverted Image received from bands Combination 13-12-11, Envi



Inverted Image received from bands Combination 9(red)-10(green)-11(blue).



Image received from bands Combination 11(R)-4(G)-2(B)



Image received from bands Combination 6(R)-5(G)-2(B)



Image received from bands Combination 15(R)-4(G)-1(B)

To obtain a good-quality natural-coloured image of wetlands we need:
nadir-taken colour CHRIS image with bands combination of corresponding spectral channels:

Number of spectral channel	Corresponding colour
1	Indigo blue (cyan)
2	blue
3	green
4	green
5	green
6	red
7	red
8	red
9	red
10	red
11	red
12	red
13	NIR
14	NIR
15	NIR
16	NIR
17	NIR
18	NIR



Inverted Image received from bands Combination 4(R)-2(G)-1(B)

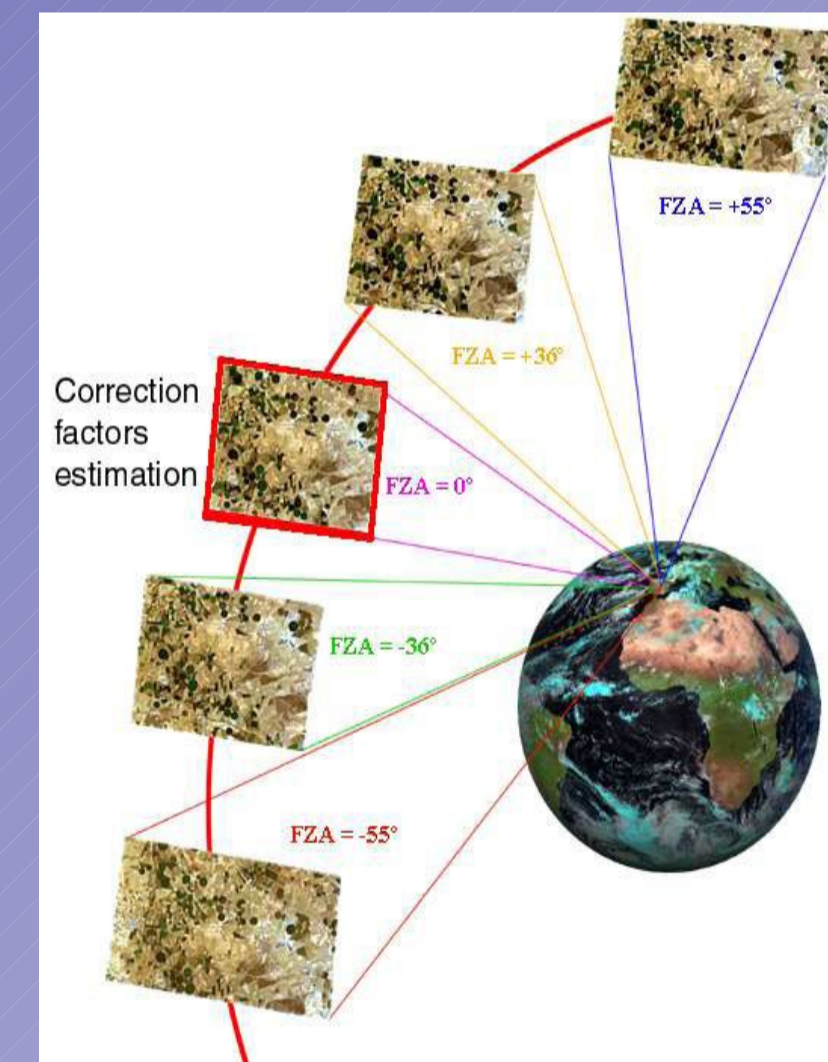
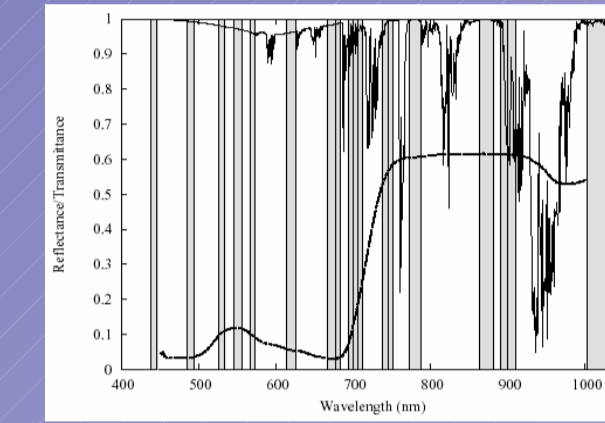
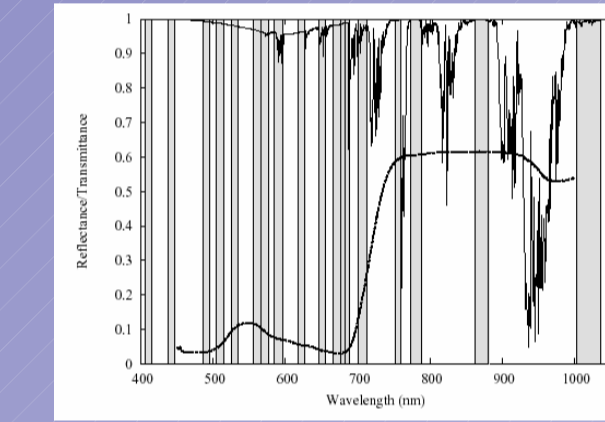


Fig. 3. Viewing angles in a CHRIS / PROBA acquisition (J.C.Garcia, p.3)



CHRIS Superspectral Land: Many narrow bands around the red-edge (Barnsley M.J. p.5)



CHRIS Superspectral Water: many narrow bands in the visible wavelengths (Barnsley M.J., p.5)



Fig. 1. Vertical air photo of Thorney Island



Fig.2. Oblique air photo Thorney island



CHRIS_CH_041007_479F_41 Bands_12-8-1



CHRIS_CH_041007_479F_41_Bands_7-4-1, best natural-colours band combination for Thorney Island wetlands monitoring

References:

- Barnsley M.J. et al. *The PROBA/CHRIS Mission: A Low-Cost Smallsat for Hyperspectral, Multi-Angle, Observations of the Earth Surface and Atmosphere.*
- Bermin J. *PROBA – Project for On-Board Autonomy*
- Cutter M.A., Lobb D.R. Cockshott R. (2000) *Compact High Resolution Imaging Spectrometer.* Elsevier Science Ltd, Kent, UK
- Garcia J.G., Moreno J. *Removal of noises in CHRIS/PROBA images: Application to the Sparc Campaign Data*
- <http://www.chris-proba.org.uk/>
- <http://earth.esa.int/missions/thirdpartymission/proba.html>
- Kuusk A., Kuusk J., Lang M.. *A dataset for the validation of reflectance models.* Remote Sensing of Environment 113 (2009) 889–892