



Reconstructing pyrenean fields: Preliminary results from a multidisciplinary approach

Christine Rendu, Carine Calastrenc, Olivier Passarius, Ramon Julia, Muriel
Llubes

► To cite this version:

Christine Rendu, Carine Calastrenc, Olivier Passarius, Ramon Julia, Muriel Llubes. Reconstructing pyrenean fields: Preliminary results from a multidisciplinary approach. Colloque international LAC2010, 2010, Amsterdam, Netherlands. hal-02019791

HAL Id: hal-02019791

<https://hal.science/hal-02019791>

Submitted on 8 Jun 2023

HAL is a multi-disciplinary open access archive for the deposit and dissemination of scientific research documents, whether they are published or not. The documents may come from teaching and research institutions in France or abroad, or from public or private research centers.

L'archive ouverte pluridisciplinaire **HAL**, est destinée au dépôt et à la diffusion de documents scientifiques de niveau recherche, publiés ou non, émanant des établissements d'enseignement et de recherche français ou étrangers, des laboratoires publics ou privés.



Reconstructing pyrenean fields: Preliminary results from a multidisciplinary approach

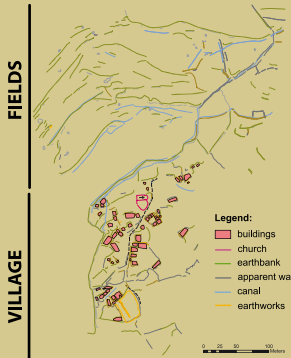
Ch. Rendu, C. Calastrenc, O. Passarrius, R. Julia, M. Llubes - collab : E. Bille, M. Conesa, P. Illes, C. Jodry, P. Berard

Operating context: Extension of a solar power station (1700 m) => archaeological survey of 10 ha, with evidence of a medieval village and an undated system of terraces

Scientific context : This study is part of a long-term, interdisciplinary research project on the landscape in the Eastern Pyrenees.

Interest of this project

1. An entire medieval village (4 ha)
=> non destructive method.
2. Fields and terraces (6 ha) with deep soils: history of a agrarian landscape.

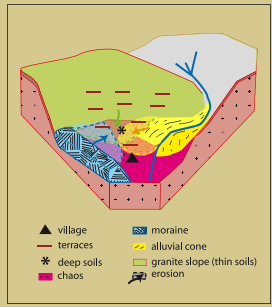
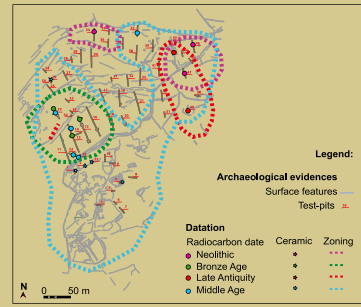


Methods

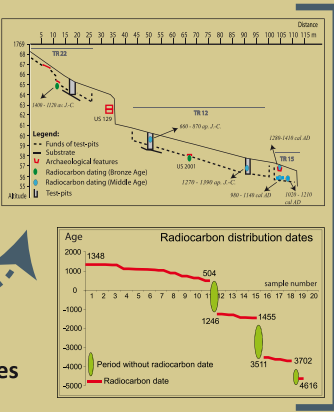
- surface surveys:**
- DGPS
 - Geophysics
 - Aerial photography
- Excavations:**
- 52 trial trenches
 - geomorphology
 - 22 radiocarbon dates



Lands over the long-term



- * Complexity of natural sedimentary dynamics
- * Complexity of anthropic sedimentary processes.
- * No chronological inversion
- * Breaks in the chronological series



Age and density of the evidences

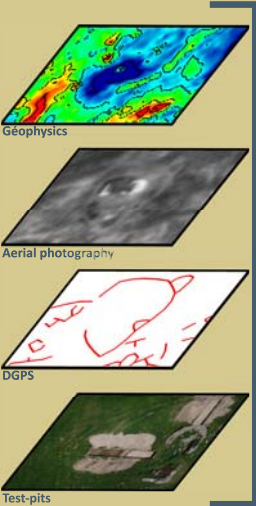
- => Ancient agricultural shaping of the slope (Bronze Age boundary markers and terraces)
- => Different phases: possible alternating land uses

Periodization of the medieval settlement and its farmlands

A multidisciplinary survey

Periodization of the village

Medieval Periodization of the Terraces



Comparative analysis

Layout of the village



- 11th-12th c.: creation
- 12th-13th c.: expansion
- mid-14th c.: desertion

- 11th-12th c.: first medieval soil and 1st wall
- 12th-13th c.: 2nd terrace wall and 1st drainage
- mid-14th c.: 3 terracing (new wall) and 2nd drainage

- * At the same time the village was deserted, the fields were reorganized.
- * Continuity of cultivation -> Rapid transformation from village fields to a single large farm.

Conclusion : - Complex interactions between Humans and the environment.
- New evidence for regional agrarian history.

