



HAL
open science

The dynamic response of prone-to-fall columns to ambient vibrations: comparison between measurements and numerical modelling

J. Valentin, A. Capron, D. Jongmans, L. Baillet, P. Bottelin, F. Donze, E. Larose, A. Mangeney

► To cite this version:

J. Valentin, A. Capron, D. Jongmans, L. Baillet, P. Bottelin, et al.. The dynamic response of prone-to-fall columns to ambient vibrations: comparison between measurements and numerical modelling. *Geophysical Journal International*, 2016, 208 (2), pp.1058-1076. 10.1093/gji/ggw440 . hal-02019269

HAL Id: hal-02019269

<https://hal.science/hal-02019269>

Submitted on 21 Aug 2020

HAL is a multi-disciplinary open access archive for the deposit and dissemination of scientific research documents, whether they are published or not. The documents may come from teaching and research institutions in France or abroad, or from public or private research centers.

L'archive ouverte pluridisciplinaire **HAL**, est destinée au dépôt et à la diffusion de documents scientifiques de niveau recherche, publiés ou non, émanant des établissements d'enseignement et de recherche français ou étrangers, des laboratoires publics ou privés.

The dynamic response of prone-to-fall columns to ambient vibrations: comparison between measurements and numerical modelling

J. Valentin,^{1,2} A. Capron,^{1,2} D. Jongmans,^{1,2} L. Baillet,^{1,2} P. Bottelin,³ F. Donze,⁴ E. Larose^{1,2} and A. Mangeny^{5,6}

¹Univ. Grenoble Alpes, ISTerre, F-38041 Grenoble, France. E-mail: denis.jongmans@univ-grenoble-alpes.fr

²CNRS, ISTerre, F-38041 Grenoble, France

³Géosciences Environnement Toulouse (GET), Observatoire Midi-Pyrénées, Université de Toulouse, CNRS, IRD, 14 avenue Edouard Belin, F-31400 Toulouse, France

⁴3SR, Univ. Grenoble Alpes, CNRS, F-38000 Grenoble, France

⁵Institut de Physique du Globe de Paris, Sorbonne Paris Cité, Univ. Paris Diderot, UMR 7154 CNRS, F-75005 Paris, France

⁶ANGE team, CEREMA, Inria, Lab. J.-L. Lions, CNRS, F-75589 Paris, France

Accepted 2016 November 22. Received 2016 November 21; in original form 2016 May 2

SUMMARY

Seismic noise measurements (ambient vibrations) have been increasingly used in rock slope stability assessment for both investigation and monitoring purposes. Recent studies made on gravitational hazard revealed significant spectral amplification at given frequencies and polarization of the wave-field in the direction of maximum rock slope displacement. Different properties (resonance frequencies, polarization and spectral ratio amplitudes) can be derived from the spectral analysis of the seismic noise to characterize unstable rock masses. The objective here is to identify the dynamic parameters that could be used to gain information on prone-to-fall rock columns' geometry. To do so, the dynamic response of prone-to-fall columns to seismic noise has been studied on two different sites exhibiting cliff-like geometry. Dynamic parameters (main resonance frequency and spectral ratio amplitudes) that could characterize the column decoupling were extracted from seismic noise and their variations were studied taking into account the external environmental parameter fluctuations. Based on this analysis, a two-dimensional numerical model has been set up to assess the influence of the rear vertical fractures identified on both sites on the rock column motion response. Although a simple relation was found between spectral ratio amplitudes and the rock column slenderness, it turned out that the resonance frequency is more stable than the spectral ratio amplitudes to characterize this column decoupling, provided that the elastic properties of the column can be estimated. The study also revealed the effect of additional remote fractures on the dynamic parameters, which in turn could be used for detecting the presence of such discontinuities.

Key words: Numerical modelling.

1 INTRODUCTION

During the last two decades, seismic noise measurements have been increasingly used in gravitational (natural) hazard assessment for both investigation and monitoring purposes. The seismic noise denotes ambient vibrations of the ground caused by natural sources (ocean waves striking the coast, wind effects, river flows), as well as by human activity (industrial machinery, train and car traffic) and cover a broad frequency range from less than 10 mHz to one hundred Hz (Bonnefoy-Claudet *et al.* 2006). In the low-frequency domain, the seismic noise is dominated by natural sources, while at high frequency the noise is produced by human activity. This wide

frequency range allows ambient vibrations to be used for investigating geological or civil engineering structures in a wide variety of sizes, from the lithospheric or crust scale (Campillo 2006) to a few m-thick landslides and rock structures (Danneels *et al.* 2008; Levy *et al.* 2010; Mainsant *et al.* 2012; Starr *et al.* 2015) or buildings (Clinton *et al.* 2006; Michel *et al.* 2008).

On unstable slopes, ambient vibrations have been applied in very different ways for reconnaissance, depending on the investigation purpose and the landslide type. The simplest way to extract information on a given site from ambient vibrations is to perform single-station measurements with a three-component sensor and to process the records using the so-called Nakamura's method

(Nakamura 1989). It consists in computing the spectral ratio between the horizontal and vertical components (H/V) of ambient noise. The H/V ratio has been experimentally and numerically proved to provide the fundamental resonance frequency of the site (e.g. Bonnefoy-Claudet *et al.* 2006; Haghshenas *et al.* 2008; Albarello & Lunedei 2010). For a single infinite horizontal homogeneous soft layer overlying bedrock, this fundamental frequency is given by $f_0 = V_s/4h$ where V_s is the soft layer shear wave velocity and h is the layer thickness. Knowing an estimate of V_s allows the thickness of the soft layer to be calculated.

In the case of landslides exhibiting a clear contrast in seismic velocity over the slip surface, the method is able to locally determine the landslide thickness, provided that the landslide's lateral extension is much greater than the vertical one (Jongmans & Garambois 2007). This method was successfully applied on clayey landslides affecting gentle slopes (e.g. Gallipoli *et al.* 2000; Méric *et al.* 2007; Danneels *et al.* 2008). However, in the thick lacustrine deposits of the Avignonet landslide (French Alps), Jongmans *et al.* (2009) showed that the H/V peak frequencies were not linked to the slip surface depth but rather to the deeper clay-bedrock interface, where the main contrast in seismic velocity occurs. In more complex geometry (2-D/3-D structure), the H/V ratios might show an azimuthal variation, resulting from a resonance anisotropy. This phenomenon was reported by some authors (Méric *et al.* 2007; Del Gaudio *et al.* 2008) on low to middle slopes. At the Caramanico Terme site in the Apennine chain (central Italy), Del Gaudio *et al.* (2008, 2014) showed that the site exhibits directional spectral amplification and that the H/V spectral ratios are approximately oriented as the site response (standard spectral ratios). Analysis of ambient vibrations and of small regional earthquakes records was also performed at the top of the Randa rock cliff site (Burjáněk *et al.* 2010; Moore *et al.* 2011), which experienced two catastrophic failures in April and May 1991. The recorded wavefield revealed significant spectral amplification and polarization in the direction of maximum slope displacement within the unstable rock mass, which the authors relate to the presence of near-vertical deep fractures (Moore *et al.* 2011). Small-aperture seismic arrays were deployed at a potentially unstable slope in the same area (Burjáněk *et al.* 2012). Array technique analysis showed that the wavefield was dominated by standing waves characterized by directional horizontal spectral amplification oriented perpendicular to open tension cracks. For an unstable rock column, Levy *et al.* (2010) derived its main resonance frequency f_0 from seismic noise records and observed a drop in f_0 prior to column collapse. Thereafter, Bottelin *et al.* (2013a) studied the dynamic response of four prone-to-fall rock compartments showing diverse morphology, failure mechanism, geological context and volumes. Every single cliff site exhibited well-defined polarized spectral peaks at distinct frequencies. The predominant spectral peak was systematically measured at the lowest resonance frequency f_0 with a polarization perpendicular to the rear fracture.

This review shows that different characteristics of the seismic noise (peak frequencies interpreted as resonance frequencies, polarization, and the spectral ratios H/V and H/H) could be derived from the spectral analysis of the recorded motion. For cliff-like sites, this paper aims to identify the key parameters that could be extracted from ambient vibrations and used to gain information on the prone-to-fall column geometry. We first analyse the dynamic response of prone-to-fall columns to seismic noise at two rocky sites, extracting several parameters (main resonance frequency, spectral ratio amplitudes) that could characterize the column decoupling, and studying their variations depending on external environmental factors. We then conduct a 2-D numerical modelling to understand

the experimental data and to assess the influence of the rear fracture geometry on the motion characteristics. A simple relation has been found between spectral ratio amplitudes and the column slenderness (ratio of the column height and thickness). However, the resonance frequency appears to be less sensitive to climatic fluctuations to assess the column decoupling, whereas spectral ratio amplitudes provided a way to detect the presence of additional fractures. These results demonstrate the interest of combining these three parameters (resonance frequency and the two spectral ratio amplitudes).

2 DATA PROCESSING RESULTS

2.1 Site characteristics

Two cliff-like sites with exposed rock columns and with an easy top plateau access were instrumented. The first one (Les Arches) is located in the Western Alps (France), at the Southern end of the carbonate Vercors massif, 100 km South of Grenoble city (Fig. 1a). The cliff, which culminates at an elevation of about 1900 m, is made of sub-horizontal meter-thick limestone layers (Levy *et al.* 2010). An unstable column about 30 m high, 15 m wide and 4.5 m thick (Figs 1b–d), for a volume of about 1000 m³ has been identified there. The rear fracture is about 1 m wide at the surface and is visible to 15 m depth. Seismic prospecting was carried out nearby and the limestone was found to be strongly fractured with P -wave and S -wave velocities of 2800 and 960 m s⁻¹, respectively (Levy *et al.* 2010).

The second site (Bory) is located on the Piton de La Fournaise volcano (La Réunion Island, Indian Ocean) (Fig. 2a). The studied column was formed after the Dolomieu crater collapsed in April 2007 (Peltier *et al.* 2012). This event cut the already present but smaller Bory crater (semi-elliptic shape) and created new cliffs up to 300 m high along the crater walls (Fig. 2b). Numerous open hectometre-size fractures, parallel to the cliff, were observed in the Bory crater (Figs 2b and c). The 10 000 m³ column is separated from the crater by an open fracture (about 1.5 m wide at the surface and deeper than 10 m; Figs 2d and e). The adjacent rock cliff is made of three layers, with from top to bottom: an 11 m thick dark basaltic layer, a 4 m reddish scoria layer and a thick basaltic layer (Fig. 2e). Seismic prospecting was performed at several sites on the remaining Bory crater (Bottelin 2014). The upper basalt layer was found to be strongly and heterogeneously fractured, with P - and S -wave velocity varying from 630 to 1500 m s⁻¹, and from 420 to 650 m s⁻¹, respectively. These ranges of values for the near-surface velocity are also observed for other volcanoes (Perrier *et al.* 2012).

The two sites were equipped with short-period 3-C seismometers connected to Nanometrics Taurus stations. The seismometers were oriented northward and the seismic stations operated in continuous recording mode with a 250 Hz sampling frequency. Periods of study vary across the two sites. Les Arches is a semi-permanent observation site equipped with two seismometers (Fig. 1b). We considered the recording period between 2015 June 12 and 2015 July 28, and for which full 3-C data are available. Air temperature, rainfall and wind speed were recorded by the permanent meteorological station 'Jardins du Roi', located 3.2 km southwest from the site and 120 m below in altitude.

The Bory site (Fig. 2c) was temporary monitored in October 2012. Two seismometers ($S1$ and $S2$) recorded continuously at the same location during three full days (2012 October 28 to 2012 November 1). A seismometer was also moved along a profile ($S3$ to $S8$) and the ambient noise was recorded during 45 min at each

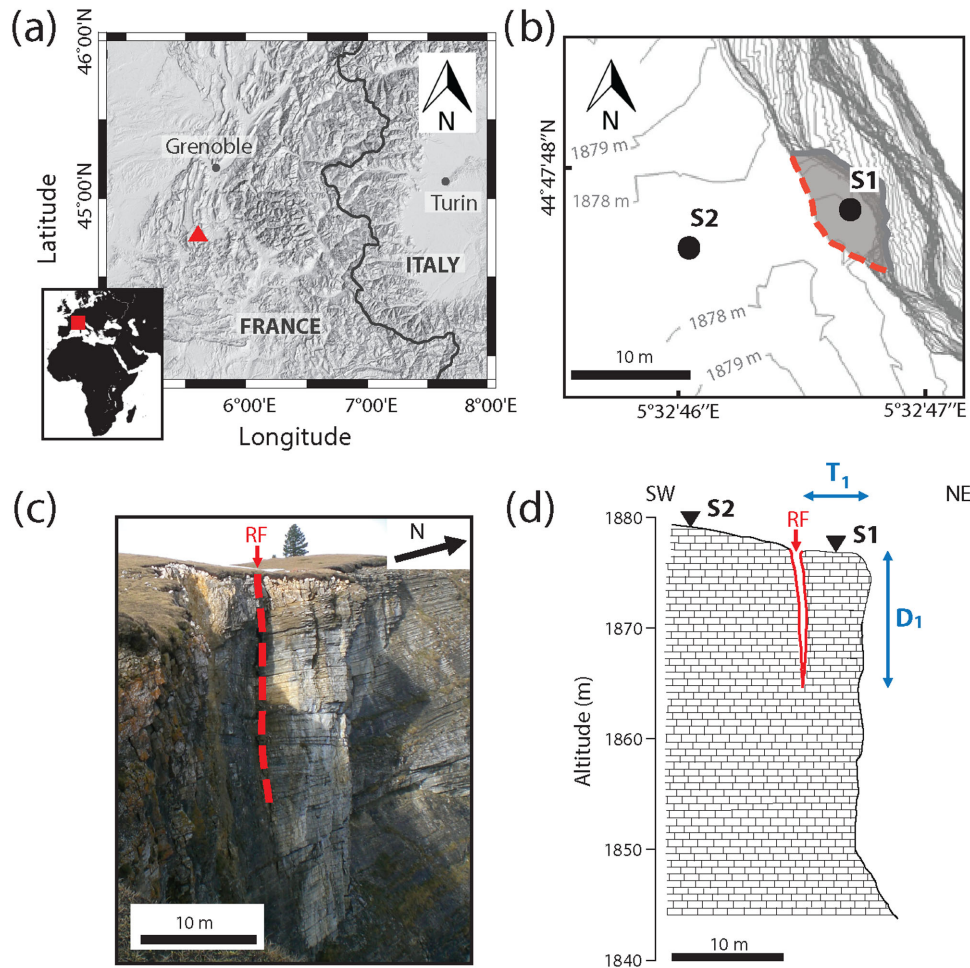


Figure 1. Site of Les Arches. (a) Location map. (b) Simplified contour map with the location of the sensors $S1$ and $S2$. (c) Picture of the column, taken from the southeast. (d) Schematic vertical section (limestone). The rear fracture (RF) delineating the unstable column is shown with red lines. D_1 and T_1 are the fracture depth and the column thickness, respectively.

location. As the dynamic response of an unstable compartment was previously found to be partly thermally controlled (Levy *et al.* 2010; Bottelin *et al.* 2013b), the air temperature was measured in the main rear fracture and all data series were referenced using the Coordinated Universal Time (UTC) system.

2.2 Experimental results

2.2.1 Les Arches site

For les Arches site, the polar plot of the normalized Fourier spectra (horizontal components) at sensor $S1$ is displayed in Fig. 3(a). Fourier spectra were computed over a 24 hr long period (2015 July 14) with 1° azimuthal increment in the frequency range [0.5–10 Hz]. Azimuths are displayed clockwise with respect to the North, whereas the radial direction corresponds to the frequency axis. This plot exhibits a clear peak at an azimuth of 55° with a frequency of 6 Hz. It corresponds to a predominant motion oriented perpendicular to the rear fracture (Fig. 3b). This peak frequency was previously interpreted as the fundamental resonance frequency (first bending mode) of the column, using numerical modelling Bottelin *et al.* (2013b). The monitoring of the Fourier spectrum (horizontal motion H oriented $N55^\circ$) during 1.5 months (from 2015 June 12 to 2015

July 28), along with the amplitudes of the H/V and H/H spectral ratios at f_0 ($A_{H/V}$ and $A_{H/H}$ amplitudes, respectively) and temperature and wind variations is shown in Fig. 3(b). The frequency f_0 exhibits variations ranging from 5.6 to 6.5 Hz, and it clearly appears to be controlled by the temperature fluctuations. This in-phase relation is interpreted as resulting from the rear fracture closure induced by rock thermal expansion (Bottelin *et al.* 2013b). $A_{H/V}$ and $A_{H/H}$ values at the resonance frequency vary widely over time, from 2 to 30 and from 7 to more than 100, respectively (Fig. 3b). The H/V and H/H curves (mean and \pm one standard deviation, in log scale) for both sensors $S1$ and $S2$ are shown over the 1.5-month period in Figs 3(e) and (f). The mean H/V value on the column ($S1$) reaches about 15 at the average resonance frequency of 6.2 Hz with a high scattering (6 to 31). At the $S2$ reference sensor, the mean H/V curve remains almost flat and consistent, exhibiting values between 1 and 2 below 10 Hz. The mean $A_{H/H}$ value is higher (33) than $A_{H/V}$, showing strong scattering (16 to 70). Higher $A_{H/V}$ and $A_{H/H}$ values are obtained during periods of strong wind (blue vertical bands, Fig. 3b). We computed the mean $A_{H/V}$ amplitude in successive 1 m s^{-1} -wide wind speed classes (Fig. 3c). $A_{H/V}$ and $A_{H/H}$ values regularly increase with the wind speed, with a lower scattering for strong winds. This relation might result from the wind-induced seismic sollicitation of the column in the vicinity of the sensor. This hypothesis was numerically tested with a 2-D model by applying a horizontal wind

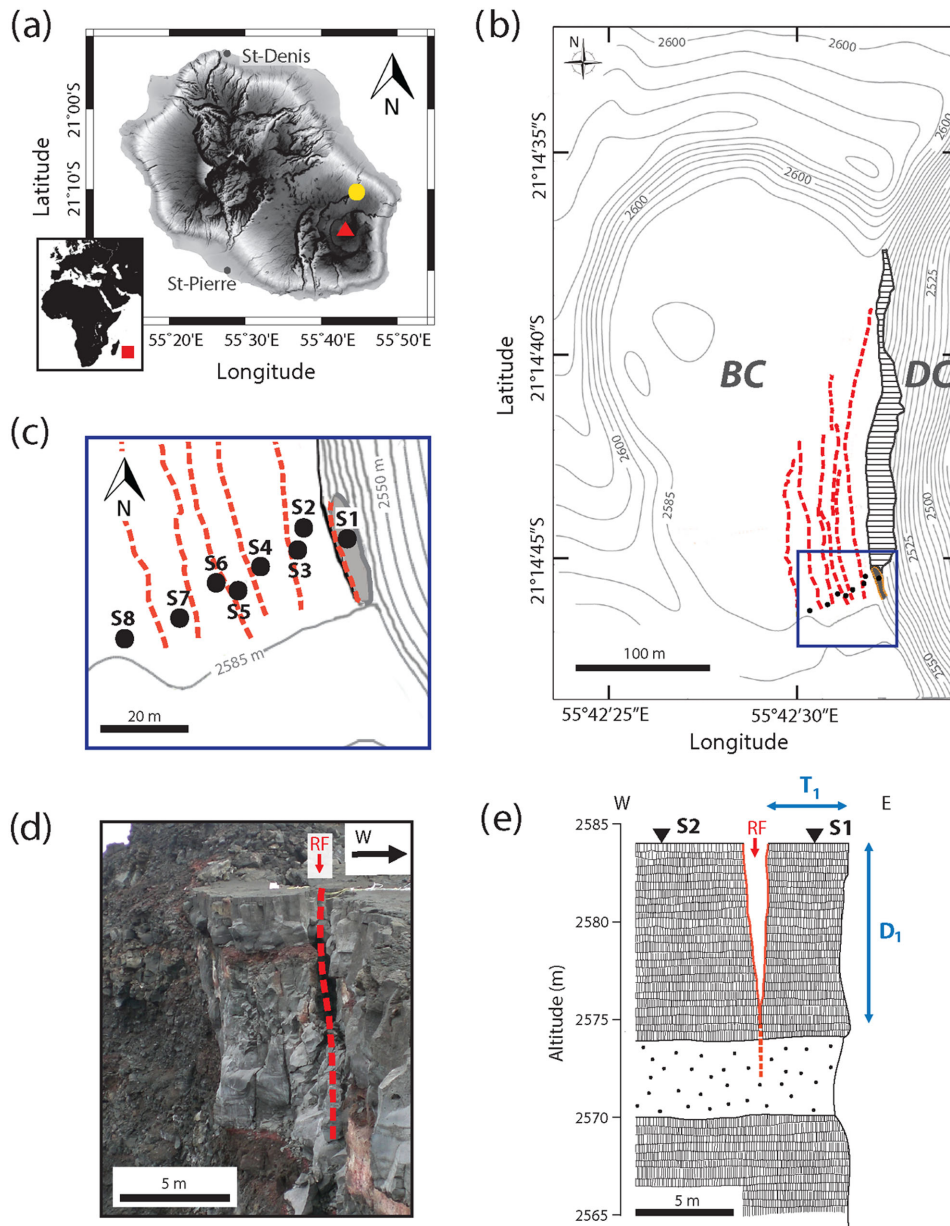


Figure 2. Bory Site (Piton de la Fournaise Volcano). (a) Map showing the location of the Bory crater (red triangle) and of the seismological reference station RER of the Geoscope network (yellow dot). (b) Contour map showing the older Bory crater (BC) truncated by the Dolomieu crater (DC). (c) Detailed contour map (rectangle in Fig. 2b) with the location of the sensors S1 to S8. (d) Picture of the prone-to-fall column, taken from the north. (e) Schematic geological section showing basaltic flows with an interbedded 4 m thick scoria layer (black dots). The rear fracture (RF) delineating the unstable column is shown with dashed red lines.

pressure P_w on the cliff free surface. We used the simple equation $P_w = K\rho S_w^2$ (Mendis *et al.* 2007), where S_w is the wind speed, K is a shape factor and ρ is the air density, with strong winds (S_w between 3 and 5 m s^{-1}). Results indicate that the wind speed increases the H/V and H/H ratios over a relatively wide frequency range (Appendix A; Fig. A1). At the peak frequency, the rise is about 20 per cent for H/V and 80 per cent for H/H , $A_{H/V}$ and $A_{H/H}$ reaching values of 22 and 60, however below the amplitudes of 30 and more than 100 (Fig. 3c) measured in strong wind conditions. These results suggest that the pressure of strong wind on the column could contribute to the observed ratio increase, without totally explaining its magnitude. Another factor could also originate from turbulence effects at

the air/instrument/ground interface (Mucciarelli *et al.* 2005). Both sensors are superficially buried at Les Arches site, owing to rocky ground conditions. Enhanced horizontal component vibration could then be due to air flow rotation near the ground and/or turbulences in the fracture during windy periods.

In order to minimize the wind effect, the H/V and H/H curves were computed for wind speed weaker than 1 m s^{-1} (Figs 3h and i, respectively). This condition yielded smaller values of mean $A_{H/V}$ and $A_{H/H}$ (10.8 and 30, respectively) with reduced scattering for $A_{H/H}$. However, these two parameters still exhibit greater variation than the resonance frequency f_0 , suggesting that they are more sensitive to the environmental conditions.

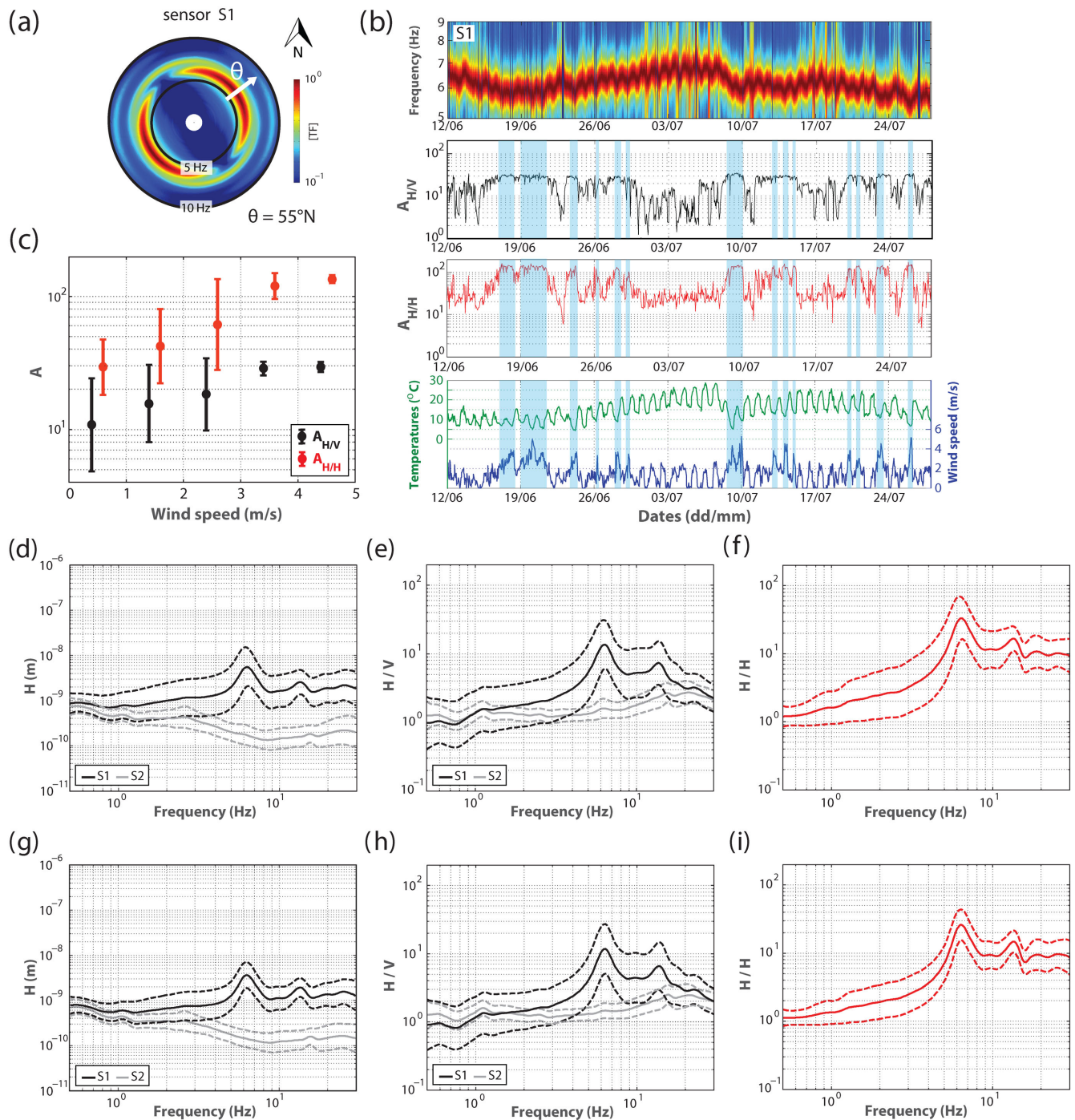


Figure 3. Les Arches site. (a) Polar plot of the normalized Fourier spectra at sensor S1 (column), computed from a 1 hr long record (2015 July 14). The main peak is at 7 Hz (f_0) with a motion polarized in the N55° direction. (b) Top: Fourier spectra along the horizontal component H oriented perpendicular to the cliff (N55°) during 1.5 months (2015 June 12 to 2015 July 28). Middle: amplitudes of the H/V and H/H ratios ($A_{H/V}$ and $A_{H/H}$) at f_0 during the same period. Bottom: temperature and wind speed curves measured at the permanent meteorological station during the same period. (c) $A_{H/V}$ (black) and $A_{H/H}$ (red) values (mean with error bars) at the resonance frequency as a function of wind speed. (d) Horizontal spectral motion at sensors S1 (black) and S2 (grey). (e) H/V spectral ratios at the two sensors S1 (black) and S2 (grey). (f) H/H spectral ratios (motion at sensor S1 over motion at sensor S2 in the N55° direction). (g) Same legend as (d) for wind speed weaker than 1 m s⁻¹. (h) Same legend as (e) for wind speed weaker than 1 m s⁻¹. For diagrams (d) to (i), solid lines are mean curves and dashed lines represent \pm one standard deviation around the mean. All the spectra were computed for the same period (2015 June 12 to 2015 July 28).

2.2.2 Bory site

At the Bory site, the Fourier spectra polar plot (horizontal components) at sensor S1 shows a clear peak at a frequency of 2.9 Hz for an

azimuth of N65° (Fig. 4a). This peak corresponds to a motion perpendicular to the rear fracture (Fig. 2d). Similarly to the Les Arches site, this frequency is interpreted as the fundamental resonance frequency f_0 (bending vibrational mode) of the column. The Fourier

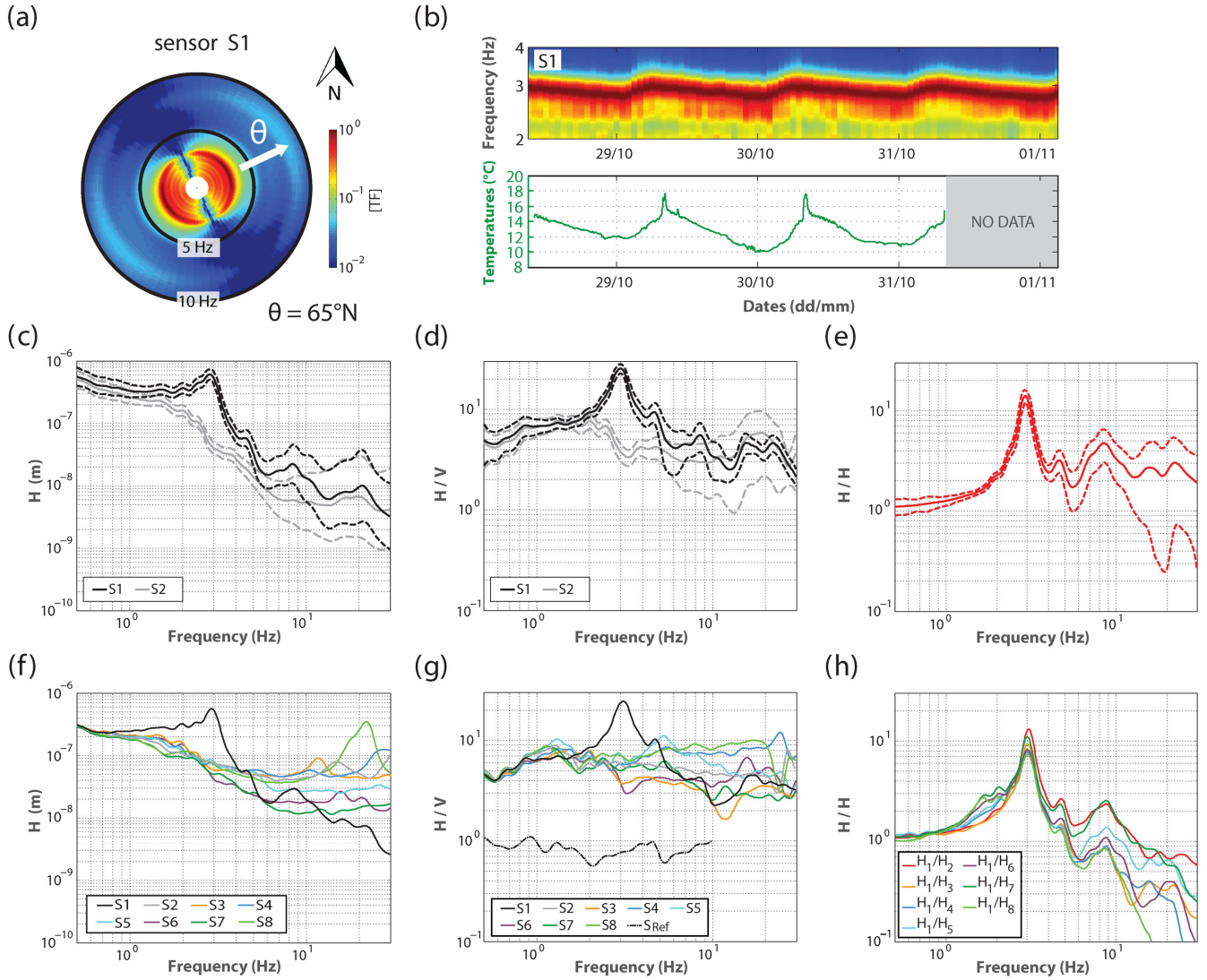


Figure 4. Bory site. (a) Polar plot of the normalized Fourier spectra at sensor S1, computed from a 1 hr long record (2012 October 29). The motion is polarized in the N65° direction. (b) Normalized seismic noise spectrum and air temperature as a function of time for the 3 d experiment. (c) Fourier spectra along the horizontal component oriented perpendicular to the cliff for the two sensors S1 and S2 (3 d duration). Solid lines are mean curves and dashed lines represent mean \pm one standard deviation. (d) H/V spectral ratios (mean \pm one standard deviation) computed at the two sensors S1 and S2 (3 d duration). (e) H/H spectral ratio (mean \pm one standard deviation) between the horizontal components (perpendicular to the cliff) at sensors S1 and S2 (3 d duration). (f) Mean horizontal spectrum (perpendicular to the cliff) for the 8 sensors S1 to S8 (45 min duration). (g) Mean H/V spectral ratios computed at the 8 sensors S1 to S8 and at the permanent station S_{Ref} (45 min duration). (h) Mean H/H Spectral ratios between the horizontal component (perpendicular to the cliff) at sensor S1 and the same component at the 7 other sensors (45 min duration). Note the difference between panels (e) and (h) over 5 Hz.

spectrum variation during the 3 d of experiment, along with the air temperature fluctuations is shown in Fig. 4(b). The two curves are globally in-phase, with a variation in f_0 of ± 0.2 Hz around the average under thermal variations of about 8 °C (from 10 °C to 18 °C between day and night). This observation is consistent with the results obtained at Les Arches site and reveals the thermal response of the decoupled column.

The N65° oriented Fourier spectra are shown for sensors S1 and S2 in Fig. 4(c). The spectrum on the column exhibits a peak at about 3 Hz, not observable on the spectral motion on the rock mass. Both spectra show high amplitudes in the low frequency range (below 2 Hz) and show significant scattering over 4 Hz. The mean spectral curves for the 8 stations are shown in Fig. 4(f). The striking feature is that all sensors located in the Bory crater (S2 to S8) exhibit similar spectra in the low frequency range, with a

scattering that increases with frequency over 4 Hz. The H/V curves were computed for the two sensors S1 and S2 (3 d recordings; mean \pm one standard deviation curves, Fig. 4(d) and for sensors S1 to S8 (45 min recordings; mean curves, Fig. 4(g)). The S1 curve shows a peak with a mean amplitude $A_{H/V} = 25$ at a frequency of 3 Hz, associated to a plateau-like shape (amplitude of about 7) in the low frequency band 0.8–2.5 Hz. This feature is also observed for S2 and S3, while the plateau extends to higher frequencies for S4 and S5 (Fig. 4g). Interestingly, the H/V curve computed at a permanent station located 8.5 km from the Bory crater on the Piton de la Fournaise Volcano does not show such large amplitudes (Fig. 4g), suggesting that the plateau in the H/V curve results from a local effect. Finally, the H_1/H_n spectral ratio curves (with n corresponding to station S_n) are plotted in Figs 4(e) ($n = 2$) and (h) ($n = 2$ to 8). All curves exhibit a peak at the same frequency (around 3 Hz) with

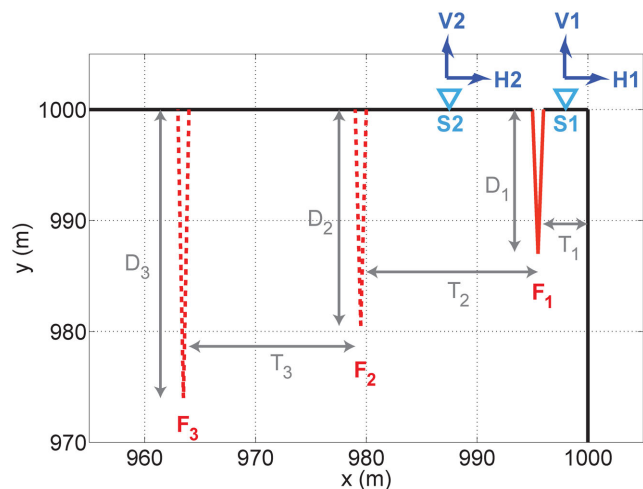


Figure 5. Geometry of the cliff with the presence of a rear fracture (F_1 : red solid line) defining a prone-to-fall column (T_1 , D_1). The horizontal and vertical motions (H and V) are computed at two sensors $S1$ and $S2$. The locations of two other rear fractures (F_2 and F_3) are indicated with red dashed lines.

$A_{H/H}$ amplitudes varying from 8 to 13 according to the location of the reference station. The H_1/H_n curves exhibit similar shapes from 0.5 Hz to 4 Hz and increased discrepancy at high frequency where the H/H ratios drop. At low frequency, all H_1/H_n ratios are close to 1, indicating that all sensors are affected by the same local effect appearing on the H/V curves. These results suggest that the seismic noise measured by the 8 sensors is affected by an amplification effect on the horizontal component, which is limited to the Bory crater. Another significant feature is the difference observed at high frequency between the H_1/H_n curves of Figs 4(e) and (h), computed for two different recording times (3 d and 45 min, respectively). This observation will be discussed further.

At the two sites, the processing of the seismic noise allowed the natural frequency f_0 of a prone-to-fall column to be easily retrieved from the natural motion spectrum or from the spectral ratios H/V and H/H . Significant differences in the spectral ratios were however found between the two sites: (1) $A_{H/H}$ is higher than $A_{H/V}$ at les Arches site, while it is the contrary at the Bory site. (2) The shape of the H/V curve is more complex at Bory, with a bump in the frequency range below f_0 . In order to understand these differences and to test the capacity to derive the rear fracture depth from seismic noise measurements, 2-D numerical modelling has been applied.

3 2-D NUMERICAL MODELLING

3.1 Numerical model and tests

First, the 2-D response of a homogeneous cliff including a single fracture of depth D_1 and delineating a column of thickness T_1 (Fig. 5) is numerically studied. This geometry approximates the shape of the studied column at Les Arches site (Fig. 1d), with $T_1 = 4$ m and $D_1 = 15$ m. The dynamic characteristics of the medium (Table 1) are based on previous seismic prospecting results (Levy *et al.* 2010), considering a slightly less fractured medium. Modelling was performed using the Finite Element software Comsol (<http://www.comsol.com>) with triangular finite elements. The modelled medium (Fig. 6a) is a square of 1000 m side with two free boundaries (the cliff and the plateau) and two absorbing boundaries (shown in red in Fig. 6a). A mesh size s_m of 4 m with a refined

Table 1. Medium dynamic characteristics chosen for numerical modelling (Les Arches site).

Characteristic	Symbol	Value
Young's modulus	E	10 GPa
Poisson's ratio	ν	0.35
Density	ρ	2500 kg m ⁻³
P -wave velocity	V_p	2530 m s ⁻¹
S -wave velocity	V_s	1220 m s ⁻¹

zone with $s_m = 1$ m was used in the model and in the upper right zone embedding the fracture (Fig. 6b), respectively. Considering the criterion that the minimum wavelength $\lambda_{\min} = 10s_m$ to ensure correct wave propagation (Moser *et al.* 1999), the maximum frequency is around 120 Hz in the refined zone and 30 Hz in the other part of the model. Three hundred ambient vibration sources were randomly placed around the upper zone as punctual forces in the medium (Fig. 6a) and simultaneously triggered. The source is a 660 s long eye-shaped random signal with a near-flat frequency spectrum between 1 Hz and 30 Hz (Figs 6c and d).

Ambient vibrations (along the y vertical and x horizontal axes) were simulated at two points located at the column top ($S1$) and on the mass ($S2$), 2 m and 10 m back of the cliff edge, respectively (Fig. 7a). As expected, the simulated seismic motion excites the column at a frequency f_0 , the maximum horizontal displacement being recorded at its top (Fig. 7a). The Fourier spectrum of the horizontal component $H_1(f)$ and the spectral ratios $H_1(f)/V_1(f)$ and $H_1(f)/H_2(f)$ are shown in Figs 7(b)–(d), respectively. In the following, the two spectral ratios will be referred to as H/V and H/H for the sake of simplicity. The five retrieved seismic noise parameters are the frequency of the first peak visible on the three graphs (f_{0H} , $f_{0H/V}$, $f_{0H/H}$) and the corresponding maximum amplitudes of the spectral ratios ($A_{H/V}$ and $A_{H/H}$). The three values (f_{0H} , $f_{0H/V}$, $f_{0H/H}$) were found identical ($f_0 = 4.9$ Hz) during all the tests, leading to the three dynamic parameters (f_0 , $A_{H/V}$ and $A_{H/H}$) to study. Modal analysis showed that the first peak frequency f_0 is the fundamental frequency of the column.

In order to compute stable values of the three parameters (f_0 , $A_{H/V}$ and $A_{H/H}$), numerical tests were performed to tune the following modelling parameters: the mesh size s_m , the number of sources (ns), the time step (dt) and the time of simulation (ts). Considering a 4 m meshing over the whole model led to computation times longer than 8 hr on a laptop. As we are modelling ambient vibrations and not specific seismic events, the size of the mesh in the remote area was increased. No noticeable difference has been observed between the computed spectral curves when increasing the mesh size s_m until 20 m. This value has been used in the computation, enabling to decrease the computation time to less than 4 hr. In a second step, we studied the influence of the parameters ns , dt and ts . The stability (less than 5 per cent variation in f_0 values) was reached for the following values: $ns \geq 300$, $dt \leq 0.004$ s and $ts \geq 360$ s. These three values are considered in all the performed simulations. The simulation time ts was increased (up to 660 s) for some models in order to ensure the correctness of the computations down to half the column natural frequency ($f_0/2$), respecting the rule $ts = 1000/f_{\min}$ proposed by different authors (e.g. Michel *et al.* 2008). The reliability of our simulations was checked by comparing the peak frequencies observed on spectral curves with the theoretical resonance frequencies computed using the modal approach implemented in the software *Comsol*. The three spectral curves computed from seismic noise records (Figs 7b–d) show two peaks at about 4.9 and 22 Hz, which were found to correspond to the fundamental

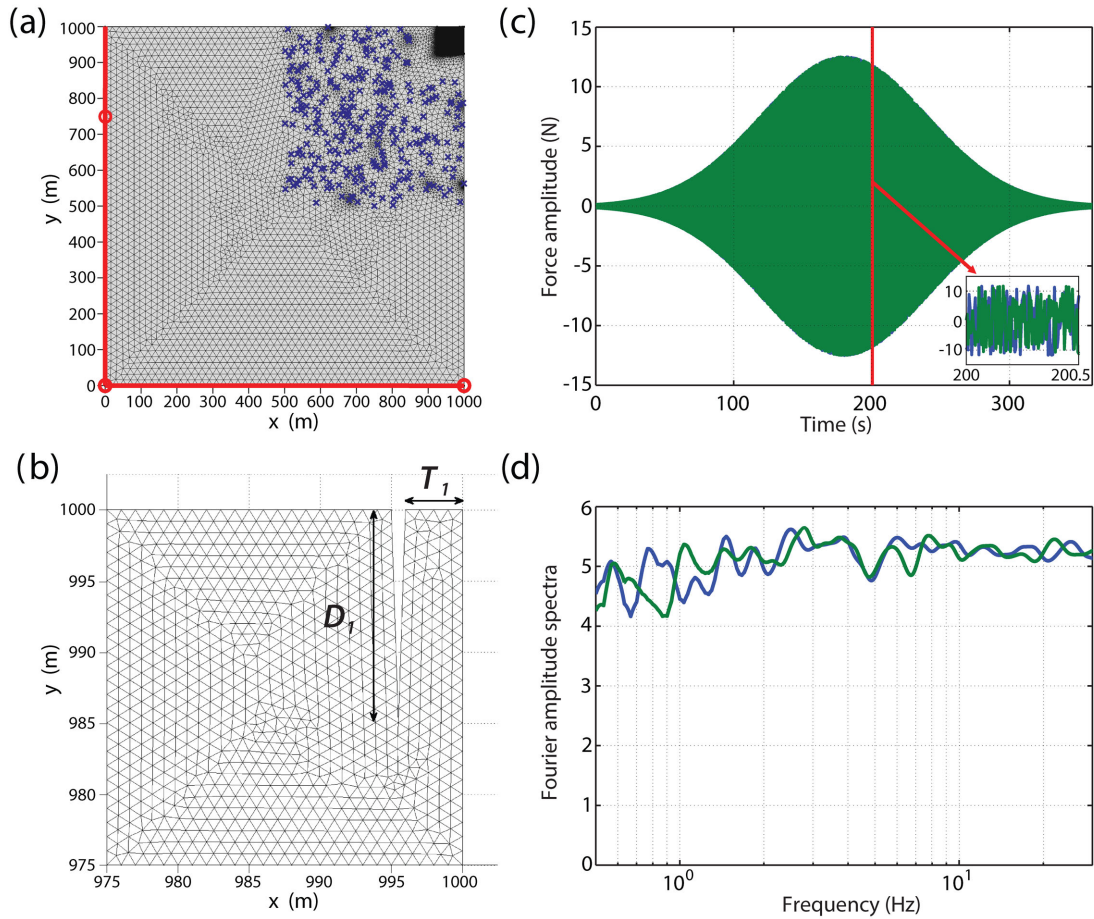


Figure 6. 2-D Numerical modelling of seismic noise. (a) Model meshing with source location (blue crosses) and absorbing boundaries (red lines). The refined zone is a square of 40 m size. (b) Enhanced view (25 m × 25 m) of the upper right refined zone showing the fracture of depth D_1 decoupling a column of thickness T_1 . (c) Source force signals along the horizontal (green) and vertical (blue) axes. The inset shows a detailed view over 0.5 s. (d) The corresponding spectra in the 0.5–30 Hz frequency range.

mode and the first higher mode, respectively, with a difference less than 1 per cent. Finally, all the computations were made assuming the material to be elastic without damping, although rock and soil exhibit wave attenuation (e.g. Rix *et al.* 2000). We tested the influence of attenuation on the three dynamic parameters by introducing a Rayleigh damping, a convenient way of accounting for damping in numerical models (Semblat 1997). We considered a near-constant damping coefficient of 5 per cent on the frequency band [1–10 Hz], close to the maximum possible value in the near-surface rocks (Toksoz *et al.* 1979). The results, shown in Appendix B (Fig. B1), indicate that the three parameters derived from seismic noise are little affected by the damping in the considered frequency range, allowing the computations to be made in the elastic domain.

3.2 Parametric modelling study

The approximate geometry of Les Arches site ($T_1 = 4$ m and $D_1 = 15$ m) and the dynamic characteristics given in Table 1 were taken as a reference model. Modelling results (shown in Fig. 7) yields a fundamental frequency of 4.9 Hz with maximum amplitudes $A_{H/V} = 19$ and $A_{H/H} = 31$ for the two spectral ratios H/V and H/H , respectively. The location of the reference point S2 on the rock mass (displaced from 10 m to 20 m and 35 m back to the cliff edge) does not affect the values of $A_{H/H}$ and f_0 (Fig. 7d). Additional numerical

simulations were performed in order to test the sensitivity of dynamic parameters to the column geometry, by varying D_1 and T_1 around the reference values. A total of 54 temporal finite element simulations were made to evaluate the influence of column characteristics on the dynamic parameters, combining variations in D_1 (6 values between 5 and 25 m), in T_1 (2, 4 and 6 m), in Young’s modulus E (2, 10 and 20 GPa) and keeping constant the density and the Poisson’s coefficient. The results are given in Table C1 of Appendix C.

First, the H/V and H/H curves are shown in Figs 8(a) and (b), respectively, for the fracture depth D_1 varying between 5 m and 25 m, keeping constant all the other model characteristics. It can be seen that the increase in D_1 induces a regular decrease in resonance frequency, associated to an augmentation of the amplitudes $A_{H/V}$ and $A_{H/H}$. Using the simple relation

$$f_0 = \frac{1}{2\pi} \sqrt{\frac{K}{M}} \quad (1)$$

which corresponds to the fundamental frequency of an oscillator of mass M and rigidity K , this frequency drops with D_1 is explained by both the increase of the column mass and the decrease of its rigidity, while the increase in amplitude is probably controlled by the decrease in rigidity. For a slender beam of thickness T_1 in

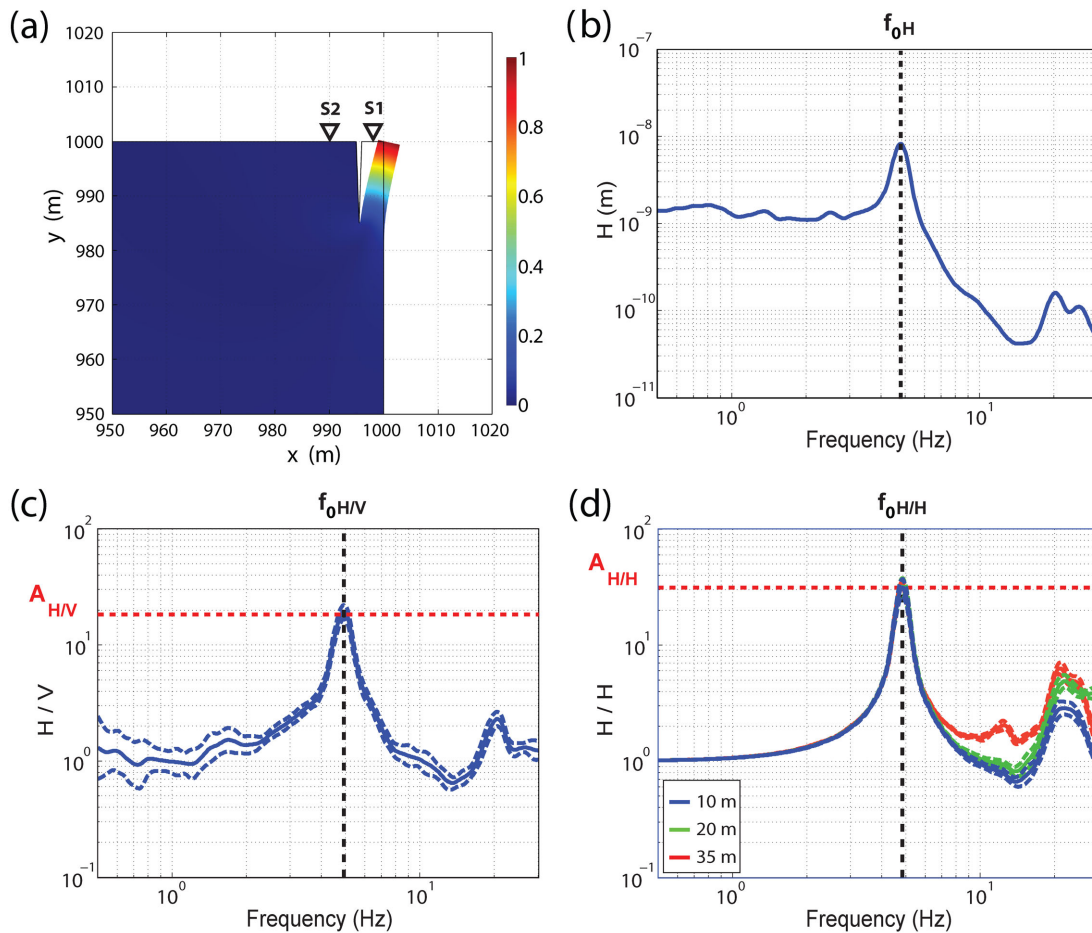


Figure 7. Numerical modelling of the column response for the reference case ($T_1 = 4$ m; $D_1 = 15$ m; $E = 10$ GPa) and definition of the five parameters derived from seismic noise. (a) Maximum amplitude displacement of the column for the fundamental mode. (b) Spectral amplitude of the H_1 component (parameter f_{0H}). (c) H/V spectral ratio at sensor S_1 (parameters $f_{0H/V}$ and $A_{H/V}$). (d) H/H spectral ratio (parameters $f_{0H/H}$ and $A_{H/H}$). The H/H curve is shown for three distances of S_2 from the cliff edge (10, 20 and 35 m).

flexural vibration, the natural frequencies are given by the following equation (Chen & Lui 1997):

$$f_n = \frac{k_n^2}{2\pi} \frac{T_1}{D_1^2} \sqrt{\frac{E}{12\rho}}, \quad (2)$$

where the coefficient k_n defines the resonant mode at frequency f_n ($k_0 = 1.875$ for the fundamental frequency f_0). The values of f_0 given by this equation are compared to the numerical results in Figs 8(c) and (d), where f_0 is plotted as a function of T_1/D_1^2 . In Fig. 8(c), the curves computed for the three values of T_1 (2, 4 and 6 m) and $E = 10$ GPa are tangent to the theoretical line (eq. 2) for low values of T_1/D_1^2 (i.e. when the column slenderness is high). The same tendency is observed in Fig. 8(d) when the Young's modulus E is varied with $T_1 = 4$ m. On both figures, f_0 at high T_1/D_1^2 values are lower than those predicted by eq. (2).

On the basis of eq. (2), we then looked for general equations of the form

$$DP = a T_1^b D_1^c E^d \quad (3)$$

relating the dynamic parameters DP (f_0 , $A_{H/V}$ and $A_{H/H}$) retrieved from seismic noise to the column characteristics (T_1 , D_1 and E), using the 54 numerical models. The least-square solution for the coefficients a , b , c and d are given in Table 2.

A very good fit was found for all dynamic parameters (correlation coefficient $CC > 0.97$):

$$f_0 = 44.696 T_1^{0.486} D_1^{-1.507} E^{0.49}. \quad (4)$$

For f_0 , the coefficient d is close to 0.5, in agreement with eq. (2), while the coefficients b and c are significantly different from 1 and -2 , respectively, explaining the deviation from the theoretical line in Figs 8(c) and (d).

For the parameters $A_{H/V}$ and $A_{H/H}$, the coefficient d is very low (around 0.015) indicating that the modulus E has little control on these parameter variations. For $A_{H/H}$, b and c are of the same order of magnitude (0.64 and 0.67), with opposite sign. This strongly suggest a slenderness control (D_1/T_1) on this parameter. Assuming that $b = -c$ and $d = 0$ for $A_{H/H}$ and $A_{H/V}$, we obtained the following two equations:

$$A_{H/V} = 5.436(T_1/D_1)^{-0.906} \quad (5)$$

$$A_{H/H} = 13.49(T_1/D_1)^{-0.658} \quad (6)$$

with correlation coefficients CC of 0.95 and 0.97, respectively (Table 2). Although the correlation coefficient for $A_{H/V}$ is slightly lower when imposing $b = -c$ (Table 2), eqs (5) and (6) were considered in the following for the sake of simplicity and applicability.

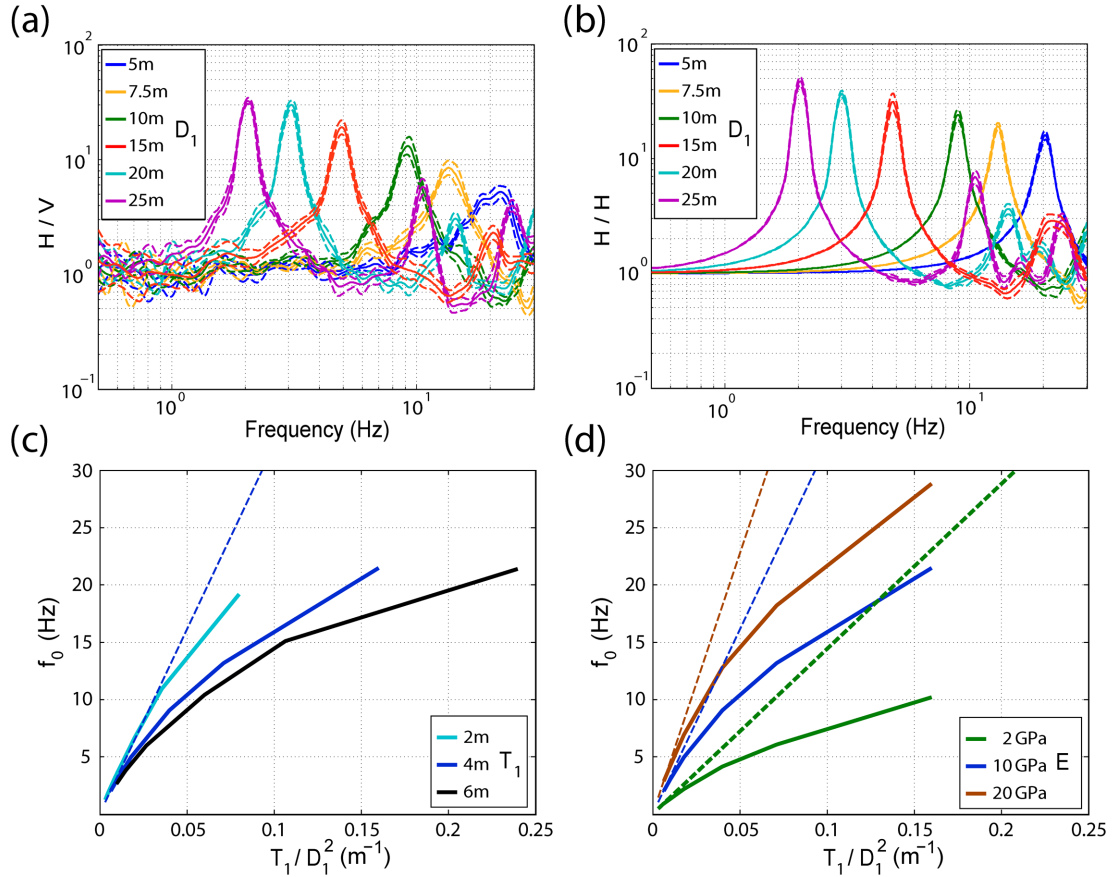


Figure 8. Variations of the noise spectral characteristics with the column geometry. The dynamic properties are given in Table 1. (a,b) Variations of the spectral ratios H/V and H/H with the fracture length D_1 (from 5 to 25 m) for a column thickness T_1 of 4 m. (c) Resonance frequency f_0 as a function of T_1/D_1^2 . (d) Resonance frequency f_0 as a function of T_1/D_1^2 . The theoretical frequency for a slender beam (eq. 2) is shown with a dashed line.

Table 2. Values of the coefficients a , b , c and d in the equation $DP = aT_1^b D_1^c E^d$, where DP is one of the dynamic parameters (f_0 , $A_{H/V}$ and $A_{H/H}$) and T_1 , D_1 and E are the thickness, the depth and the Young's modulus of the column, respectively. The coefficients a , b , c and d were determined by least-square fitting the equation (in log) to the 54 numerical data set given in Appendix C. CC is the Correlation Coefficient. The numbers in italic correspond to the coefficients computed when imposing $c = -b$ and $d = 0$.

Dynamic parameter (DP)	a	b	c	d	CC
f_0 (Hz)	44.696	0.486	-1.507	0.490	0.997
$A_{H/V}$	2.513	-0.631	1.088	-0.016	0.980
	<i>5.436</i>	<i>-0.906</i>	<i>0.906</i>	<i>0</i>	<i>0.950</i>
$A_{H/H}$	13.389	-0.641	0.667	-0.015	0.973
	<i>13.490</i>	<i>-0.658</i>	<i>0.658</i>	<i>0</i>	<i>0.972</i>

The three parameters (f_0 , $A_{H/V}$ and $A_{H/H}$) are plotted in log scale as a function of the inverse of slenderness (T_1/D_1) in Fig. 9. As expected, the f_0 data are scattered (Fig. 9a) while the $A_{H/V}$ and $A_{H/H}$ data (Figs 9b and c) show a linear decrease with T_1/D_1 . The two lines (eqs 5 and 6) with \pm one standard deviation interval are drawn in Figs 9(b) and (c). These results suggest that the spectral ratio amplitudes are mainly controlled by the T_1/D_1 ratio and that these theoretical relations could then be applied on real data to estimate the slenderness of a potentially unstable column. If the rear column thickness T_1 can be measured in the field, the fracture depth D_1 can be directly assessed. In contrast, f_0 does not exhibit such a simple dependency on the slenderness (Fig. 9a, eq. 4). These theoretical results relating the dynamic parameters to the geometric

and mechanical characteristics of the column are now applied to the two sites exhibiting cliff geometry.

4 COMPARISON BETWEEN SIMULATED AND MEASURED RESPONSES

The geometric and dynamic characteristics of the two sites (Les Arches and Bory), as well as the three parameters (f_0 , $A_{H/V}$ and $A_{H/H}$) measured from ambient vibrations are synthesized in Table 3. The presented E (Young's Modulus), V_p and V_s (P -wave and S -wave velocities) values are averages of the *in situ* measured dynamic characteristics. These values are significantly different at the two sites. The column at the Bory site exhibits a much lower resonance frequency ($f_0 = 2.85$ Hz) than that at Les Arches site ($f_0 = 6.2$ Hz), in agreement with the much lower rigidity of the volcanic rocks ($E = 2$ GPa) compared to limestone ($E = 10$ GPa). As mentioned before, the Bory site also exhibits $A_{H/V}$ values higher than $A_{H/H}$ values, in contrast with the other site and the modelling results (see Figs 9e and f).

The values of the parameters (f_0 , $A_{H/V}$ and $A_{H/H}$) measured at the two sites are compared to the theoretical curves derived from the numerical modelling in Figs 9(d) to (f). At Les Arches site, the measured f_0 yields a mean theoretical T_1/D_1 value of 0.34 (0.33–0.35, considering uncertainty) (Fig. 9d). With a column thickness of $T_1 = 4.5$ m, the rear fracture depth D_1 is estimated to be about 13 m, a value comparable to the one obtained from the outcrop observation (15 m). Using the two mean ratio amplitude parameters

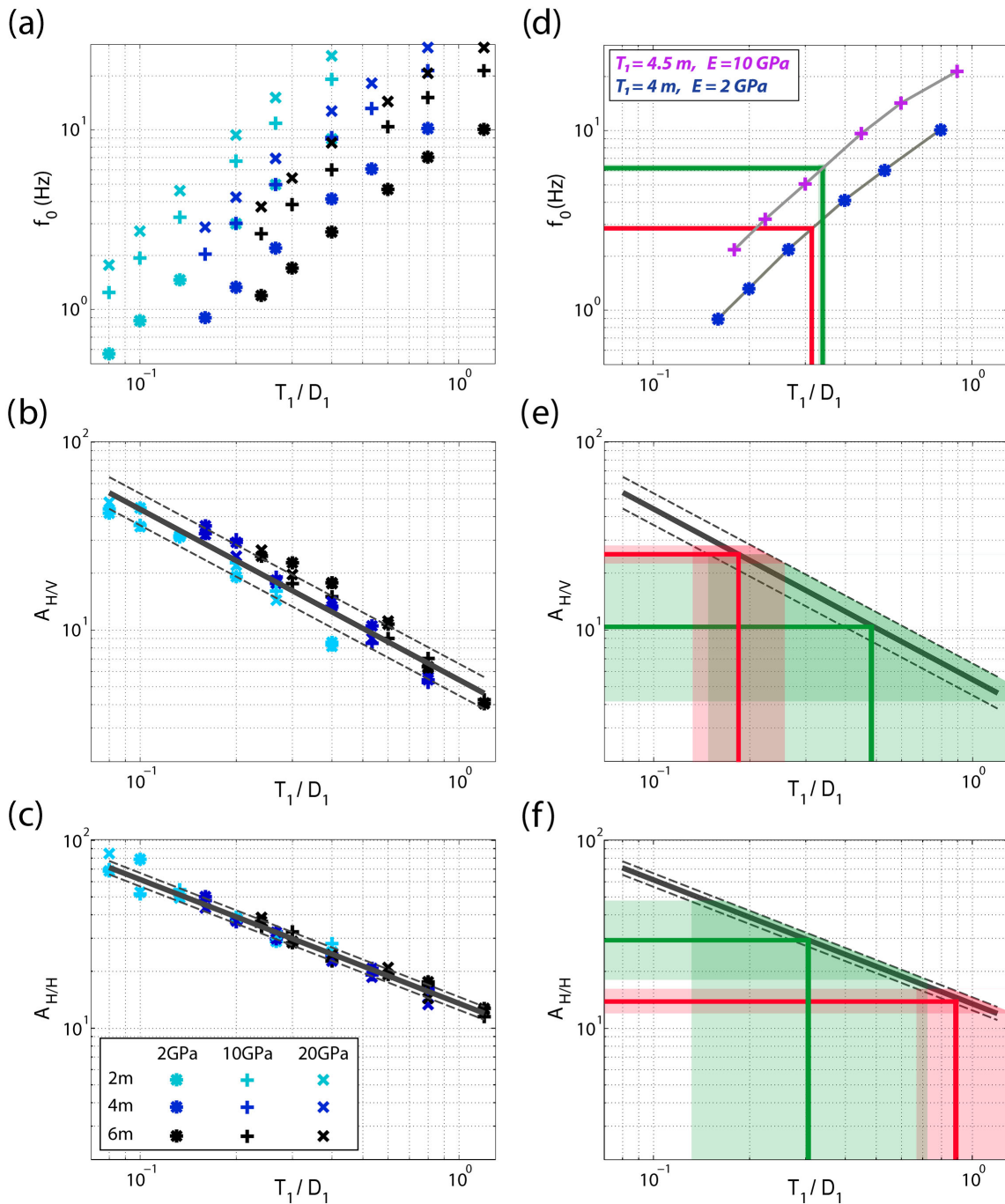


Figure 9. (a–c) Variations of the parameters f_0 , $A_{H/V}$ and $A_{H/H}$ as a function of T_1/D_1 for three values of T_1 (2, 4 and 6 m), six values of D_1 (from 5 to 25 m) and three values of Young’s modulus E (2, 10 and 20 GPa). The equations of the lines are given in the text. (d–f) Comparison between the three measured parameters (f_0 , $A_{H/V}$ and $A_{H/H}$) and the theoretical curves (dark grey) shown in panels (a)–(c). The mean measured parameters are given with their variation range (green and red colours for the Les Arches and Bory sites, respectively).

($A_{H/V}$ and $A_{H/H}$) yields T_1/D_1 values of 0.47 (0.15–1.65) and 0.3 (0.13–0.72), respectively, providing D_1 estimations of 10 and 15 m. The three dynamic parameters provide similar D_1 values, which are close to the observation. However, the $A_{H/V}$ and $A_{H/H}$ are less reliable, due to the large scattering of the measured values.

At the Bory site, T_1/D_1 is estimated to about 0.315 (0.31–0.32) from f_0 (Fig. 9d), leading to a column height D_1 of about 12 m, again in agreement with the observed rear fracture depth (over 10 m). In contrast, the well-constrained measured $A_{H/V}$ and $A_{H/H}$

values lead to a very different estimation of the T_1/D_1 value (0.18 and around 0.97, respectively). This discrepancy results from the unexpected observation that $A_{H/V}$ is significantly higher than $A_{H/H}$ at this site (Figs 9e and f). A major characteristic distinguishes the Bory site from the more homogeneous Les Arches site: the existence of multiple rear fractures affecting the rock mass as far as 60 m from the cliff (Fig. 2c). The potential effect of multiple fracturing on the ambient vibrations is explored in the following section, using numerical simulations.

Table 3. Characteristics of the column at the two sites (T_1 : thickness; D_1 : fracture length; E : Young's Modulus; V_p and V_s : P -wave and S -wave velocities) and measured dynamic parameters (f_0 : fundamental resonance frequency; $A_{H/V}$: amplitude of the H/V spectral ratio at frequency f_0 ; $A_{H/H}$: the same for the H/H ratio). The mean and variation range (italic font) are given for the three parameters. D_1 values were estimated from outcrop observations while T_1 values were measured at the top surface. The dynamic characteristics E , V_p and V_s were estimated from the seismic prospecting performed at the two sites (Levy 2011; Bottelin 2014) considering a density of 2500 kg m^{-3} for the limestone (Les Arches) and 2200 kg m^{-3} for the volcanic rock at the Bory site.

Site	T_1 (m)	D_1 (m)	E (GPa)	V_p (V_s) (m s $^{-1}$)	f_0 (Hz)	$A_{H/V}$	$A_{H/H}$
Les Arches	4.5	15	10	2530	6.2	10.4	29.4
				(1220)	5.9–6.5	4.2–25.3	18.1–47.8
Bory	4	>10	2	1065	2.85	25.4	13.8
				(600)	2.8–2.9	22.8–28.2	12.0–16.2

5 MULTIPLE FRACTURING SIMULATIONS

The influence of the presence of two additional fractures of lengths D_2 and D_3 (see the geometry in Fig. 5) on the parameters (f_0 , $A_{H/V}$ and $A_{H/H}$) is now investigated. The objective is not to exactly fit the observations with modelling but to assess if this fracturing is likely to explain the observed discrepancy (Section 4) between the data and modelling results at the Bory site. A first model geometry with one fracture, considering a fracture depth ($D_1 = 13 \text{ m}$) derived from the resonance frequency $f_0 = 2.85 \text{ Hz}$ and the dynamic parameters given in Table 3, is set up. The comparison with the experimental data (Figs 10a and b) indicates that 1-fracture modelling explains the observed $A_{H/V}$ (around 25) but strongly overestimates the $A_{H/H}$ value (30 instead of 14). Introducing a second fracture F_2 (observed on the field) with the same depth ($D_2 = 13 \text{ m}$) at a distance $T_2 = 15 \text{ m}$ from the first one, decreases the mean $A_{H/H}$ to a value of about 15, in agreement with the experimental data (Fig. 10b), while the $A_{H/V}$ remains almost unchanged. Motion analysis showed that this $A_{H/H}$ decay results from the vibration of the column between fractures F_1 and F_2 , which becomes significant when D_2 reaches the same value as D_1 (see Fig. D1 in Appendix D). In contrast, the introduction of a third fracture F_3 with the same depth ($D_3 = 13 \text{ m}$; $T_3 = 15 \text{ m}$) does not significantly affect the values of the three dynamic parameters (Figs 10a and b).

The effect of a deep third fracture ($D_3 = 26$ and 39 m) is studied and the mean theoretical and experimental H/V and H/H curves are compared for the sensors $S1$ and $S2$ nearest the cliff in Figs 10(c) and (d). A striking feature is that the introduction of a deep third fracture F_3 generates a H/V peak (≈ 5) at low frequency (1.8 Hz) (Fig. 10c). Modal analysis pointed out that this peak results from the resonance of the whole mass located between F_3 and the cliff. The experimental data at sensors $S1$ and $S2$ are compared to the modelling results ($D_3 = 26 \text{ m}$) in Figs 10(e) and (f), considering the standard deviations. The $A_{H/H}$ and $A_{H/V}$ amplitudes are correctly retrieved by modelling. In addition, the introduction of a third deep fracture generates a slight bump at low frequency on both sensors, however with a lower amplitude and over a narrower range than that observed. The modelling performed in this study is limited in size and frequency and it does not simulate the real fracturing of the Bory crater, which includes more remote and probably deeper fractures. The modelling results however suggest the presence of at least one remote deep fracture. A striking discrepancy between experimental and numerical spectral ratio curves is the through found around 6 Hz in all 2-D simulations (see Fig. 10). This through may only exist on 2-D numerical curves because other resonance modes excite the 3-D column. This hypothesis was tested with a 3-D numerical modal analysis of the Bory column, assuming a 20-m-column width (Appendix E; Fig. E1). The modal analysis in-

dicates the existence of a second torsion mode at 4.77 Hz and a third bending mode (parallel to the cliff) at 5.73 Hz. The existence of these two modes, close to 6 Hz and which cannot be considered with 2-D modelling, may explain the discrepancy between experimental and 2-D numerical results. In contrast, the experimental curves exhibit a moderate peak around 8 Hz. The spectral polar plot (Fig. 4a) indicates that this vibration mode is not exactly perpendicular to the cliff. Moreover, the high frequency part of the spectral ratios is more sensitive to the signal duration, as suggested by the difference observed between 45 min and 3 d records (Figs 4 e and h, comparison between the H/H curves).

6 DISCUSSION

2-D Numerical modelling of a homogeneous cliff affected by fractures has identified three dynamic parameters (f_0 , $A_{H/V}$ and $A_{H/H}$) that can be derived from continuous noise records using two 3-C sensors. A major result of the modelling (Fig. 9) is that the two ratio amplitude parameters $A_{H/V}$ and $A_{H/H}$ appear to be only controlled by the slenderness D_1/T_1 of the column (or its inverse T_1/D_1). Measuring $A_{H/V}$ and $A_{H/H}$ could then be used to obtain the fracture depth D_1 , if the rear fracture is observed in the field. In contrast, using f_0 to derive D_1 requires the mechanical property (Young's modulus) of the rock, making this parameter a priori less attractive. These conclusions have however to be tempered by the two applications presented in this paper. On the first site (Les Arches), the two ratio amplitude parameters turned out to be very variable, with time fluctuations seeming to be controlled by wind conditions. The effect of wind on some seismic noise parameters has been mentioned before, both for measurements on sites and buildings. On sites, the guidelines following the Sesame project (SESAME 2004) recommended to avoid recording near structures like buildings and trees during strong winds and to protect the sensors. The effect of the wind on the H/V curve is however still an object of debate (e.g. Guillier *et al.* 2007). On buildings, some authors observed an effect of the wind on the resonance frequency (e.g. Clinton *et al.* 2006) but there are still not enough data to understand the exact link between wind and frequency variation (Mikael *et al.* 2013). The observed effect of wind on H/V and H/H curves at Les Arches site remains an open question. However, considering the mean values of $A_{H/V}$ and $A_{H/H}$ during weak-wind periods provides reasonable and consistent estimates of D . On the other site (Bory), $A_{H/H}$ was found to be lower than $A_{H/V}$, an observation which disagrees with the one-fracture modelling results. Numerical modelling showed that additional remote fractures did not affect the $A_{H/V}$ amplitude but significantly decreased the $A_{H/H}$ amplitude (by a factor of two), explaining the apparent discrepancy. However, these results have been obtained by making three assumptions: (1) the geometry of the cliff is 2-D,

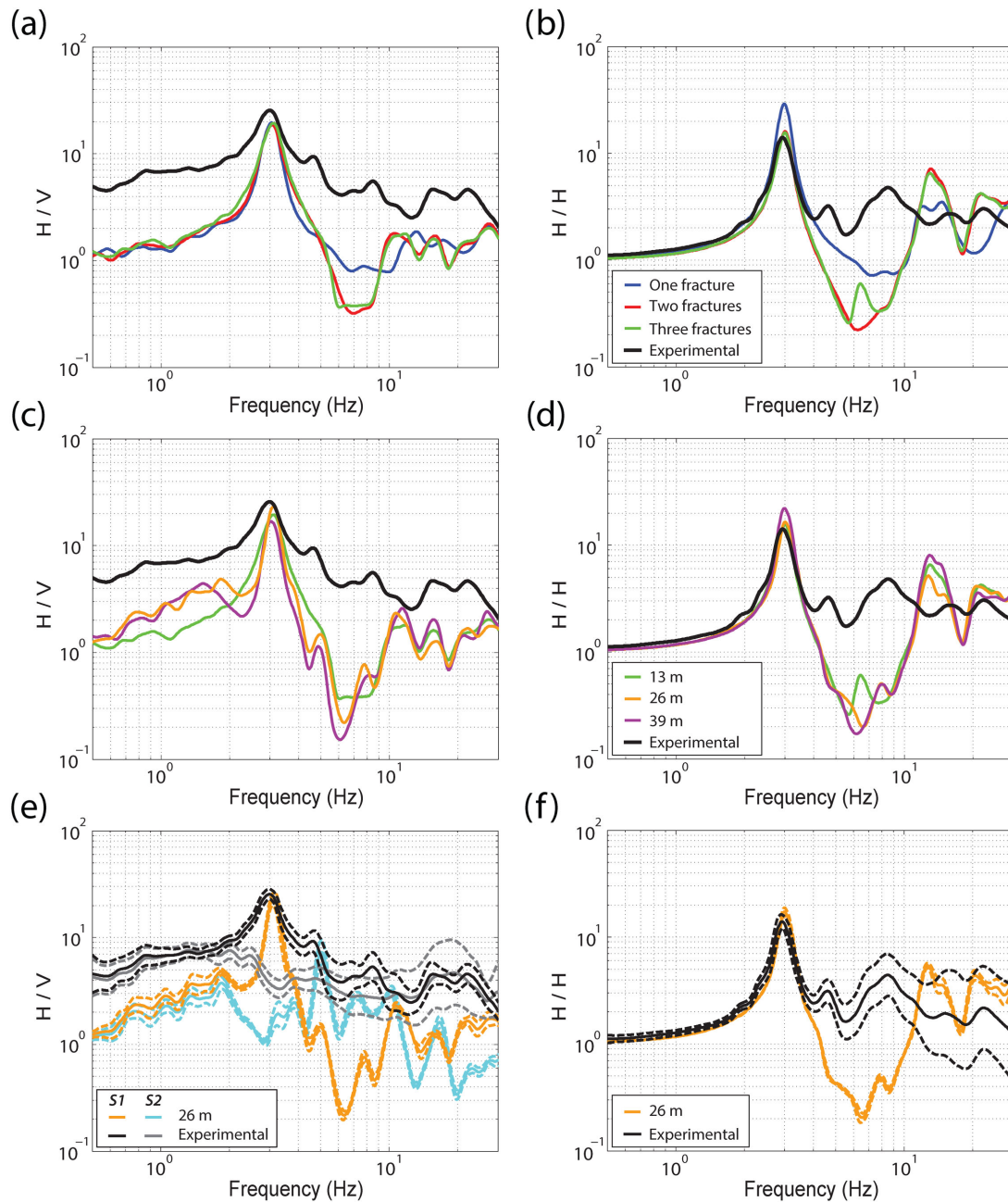


Figure 10. Effect of multiple fracturing at the Bory site. Comparison between numerical modelling results and experimental data. (a,c,e) H/V curves. (b,d,f) H/H curves. (a,b) Comparison for a geometry with one, two and three fractures (same depth $D = 13$ m) at sensor $S1$. (c,d) Comparison for three fractures with a varying depth $D_3 = 13, 26$ and 39 m at sensor $S1$. (e,f) Comparison between the three-fracture geometry modelling ($D_1 = 13$ m, $D_2 = 13$ m and $D_3 = 26$ m) and experimental data for the sensors $S1$ and $S2$. Plain lines are mean curves and dashed lines represent \pm one standard deviation around the mean.

(2) the cliff is homogeneous and (3) the main rupture mechanism is toppling, associated with a progressive downward breaking of rock bridges. The first assumption implies that the first identified resonance frequency f_0 corresponds to the bending mode with a motion perpendicular to the cliff. We performed 3-D modal analysis on a cuboid column (of depth D_1 , thickness T_1 and width w), varying w . The fundamental frequency of the bending mode perpendicular to the cliff remains equal to that computed in 2-D, as long as the width w is larger than the thickness T_1 . In the two applications presented in this paper, this condition is fulfilled with w/T_1 ratios over 2. An additional 3-D effect may arise from a variation in fracture depth D_1 along its width w . We tested the influence of this variation, fixing D_1

in the middle of the fracture and varying the fracture-bottom dip α from 0° to 30° . Modal analysis results (Table E1; Appendix E) show that such dip variation yields a frequency change of only 5 per cent for the fundamental mode (f_0), highlighting that the 2-D approximation is robust for assessing an order of magnitude of the fracture depth. The second assumption of homogeneity is obviously not met in the Bory site where a 4 m thick scoria layer is interbedded in the basalts (Fig. 2e). We modelled the effect of this low rigidity layer (Appendix F; Fig. F1) with one, two and three fractures, assuming a Young's modulus of 0.85 GPa. The main effect of the scoria layer is to decrease the resonance frequency, with unclear effect on the $A_{H/H}$ and $A_{H/V}$ values. Given the uncertainty on the dynamic

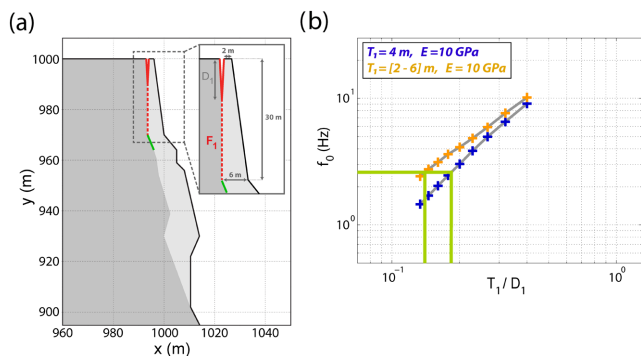


Figure 11. Chamousset site. (a) Vertical cross-section showing the column geometry (light grey) with the upper 30 m high vertical fracture. The main 6 m thick rock bridge is shown in green. (b) Estimation of the ratio T_1/D_1 from the resonance frequency f_0 measured before failure (Levy *et al.* 2010) for a rectangular column (blue crosses) and for a trapezoidal column (orange crosses). See the text for details.

parameters in the basalt and scoria layers, it is impossible to assess the real influence of the scoria layer at this stage, but its effect on the low measured $A_{H/H}$ values cannot be ruled out. These results stress out the complex interaction between fracturing, layering and the dynamic parameters derived from seismic noise, which explains the discrepancy in T_1/D_1 values obtained in the Bory site (see Fig. 9). With regards to the third hypothesis, we tested the approach proposed in this paper against the data available before the collapse of the 21 000 m³ column at the Chamousset site (Vercors massif; Levy *et al.* 2010), located 100 m from Les Arches site. The natural frequency f_0 exhibited a significant drop (from 3.4 to 2.6 Hz) in the weeks before the fall, resulting from the breakage of rock bridges as attested by the increase in seismic activity measured on the vertical sensors and field observation (Levy *et al.* 2011). Unfortunately, the acquisition system stopped working two weeks before the fall, preventing to have the f_0 value just before the rupture. The column that crashed down was about 90 m high, 30 m wide, and 2–10 m thick (Fig. 11a).

The failure surface was a nearly perfect vertical plane for 30 m, while the rest of the scar presented an overall positive tilt. The main zone showing evidence of fresh rock rupture was an elongated horizontal area corresponding to a 6 m thick limestone bed located 30 m below the plateau. Assuming the same Young's modulus as for Les Arches site (10 GPa) and a mean thickness of 4 m, we obtain a T_1/D_1 value of 0.17 for $f_0 = 2.6$ Hz and a fracture depth D_1 estimated to 24 m (Fig. 11b). Over the first 30 m, the column has however the shape of a right-angled trapezoid with an upper base of 2 m and a lower base of 6 m. A more accurate modal analysis accounting for the trapezoidal shape gives $D_1 = 28$ m (Fig. 11b). These two values are consistent with the fracture depth (30 m) down to the main rock bridge area, with a better estimate for the trapezoidal shape. It must be stressed out that this method provides an order of magnitude of the open vertical fracture depth but does not give information on the coupling state of the lower part of the scar.

Finally, the shape of the H/V curve at low frequency could indicate some site amplification effects, as shown in the Bory site. The presence of a plateau-like shape (here in the range of 0.8–2.5 Hz) on the H/V curve has been previously observed in alluvial basins close to the edges where the geometry is 2-D or 3-D (e.g. Özalaybey *et al.* 2011; Le Roux *et al.* 2012). As all the H/V curves measured in the Bory Crater exhibit a plateau-like shape, this feature could result from a 2-D or 3-D site effect due to the semi-elliptical shape

of the Bory Crater and could explain the remaining discrepancy between 2-D numerical modelling and observations (Fig. 10e).

7 CONCLUSIONS

This paper aimed to identify the pertinent and applicable parameters that could be extracted from ambient vibrations and used to gain information on a prone-to-fall column in stiff rock conditions. From numerical modelling, it was shown that the two ratio amplitude parameters $A_{H/V}$ and $A_{H/H}$ are mostly controlled by the inverse of the slenderness of the column (T/D). In contrast, the first resonance frequency f_0 depends on both the column geometry and the rock Young's modulus E . This T/D dependence, which allows the depth D to be assessed if the thickness T is known, could bring a key information about the column decoupling from simple seismic measurements. The study of two sites exhibiting a prone-to-fall column have however revealed that the application of these theoretical results might face some difficulties. The first one is the tremendous sensitivity of the ratio amplitude parameters to wind conditions at the first site. Although the mean parameters for weak wind conditions provided consistent results, the application of this method requires a thorough analysis of the data. On the second site, the seismic noise data did not match one-fracture modelling results because of the presence of multiple rear fractures located further in the Bory Crater, which significantly decreases the amplitude of the parameter $A_{H/H}$. These results suggest that the comparison between the two ratio amplitude parameters ($A_{H/V}$ and $A_{H/H}$) could provide some information on the presence of remote deep rear fractures, although the presence of an interbedded low-velocity layer could also play a role. Moreover, the H/V curves measured on the Bory site exhibit a plateau-like shape in the low-frequency range, which indicates a 2-D or 3-D site effect probably due to the Bory Crater geometry. This should be investigated in the future. A conclusion of this study is that the first resonance frequency f_0 of a column is the more reliable parameter for assessing the fracture depth D decoupling a column from the mass, provided that a reasonable estimate of the Young's modulus can be made (seismic prospecting).

ACKNOWLEDGEMENTS

This work was funded by the ARC project (Région Rhône-Alpes, France), the Interreg project MASSA, the federative organization VOR (Vulnérabilité des Ouvrages aux Risques), the European Project ERC SLIDEQUAKES (grant number ERC-CG-2013-PE10-617472), the Agence Nationale de la Recherche ANR LANDQUAKES project (grant number ANR-11-BS01-0016) and C2ROP project. The used seismic instruments belong to the French national collection Sismob-RESIF. Authors express gratitude to the permanent staff of the Observatory of the Piton de la Fournaise (La Reunion Island) for their help during the experiments and the scientific discussions. We thank Romain Biron (LTHE) for providing meteorological data and the National Vercors Park for allowing instrumentation in a protected area. This work would not have been achieved without the help of many people during field work. We are especially grateful to Julien Turpin who died prematurely in 2013.

REFERENCES

Albarello, D. & Lunedei, E., 2010. Alternative interpretations of horizontal to vertical spectral ratios of ambient vibrations: new insights from theoretical modeling. *Bull. Earthq. Eng.*, **8**(3), 519–534.

- Bonnefoy-Claudet, S., Cotton, F. & Bard, P.Y., 2006. The nature of noise wavefield and its applications for site effects studies—a literature review, *Earth Sci. Rev.*, **79**(3–4), 205–227.
- Bottelin, P., 2014. On the pre- and post-rupture phases of mid-size rockfalls: learnings from seismic records., *Theses*, Université de Grenoble.
- Bottelin, P. et al., 2013a. Spectral analysis of prone-to-fall rock compartments using ambient vibrations, *Environ. Eng. Geophys. Soc.*, **18**(4), 205–217.
- Bottelin, P., Levy, C., Baillet, L., Jongmans, D. & Guéguen, P., 2013b. Modal and thermal analysis of Les Arches unstable rock column (Vercors massif, French Alps), *Geophys. J. Int.*, **194**(2), 849–858.
- Burjánek, J., Gassner-Stamm, G., Poggi, V., Moore, J. R. & Fäh, D., 2010. Ambient vibration analysis of an unstable mountain slope, *Geophys. J. Int.*, **180**(2), 820–828.
- Burjánek, J., Moore, J.R., Molina, Y.F. & Fäh, D., 2012. Instrumental evidence of normal mode rock slope vibration, *Geophys. J. Int.*, **188**(2), 559–569.
- Campillo, M., 2006. Phase and correlation in ‘random’ seismic fields and the reconstruction of the Green function, *Pure appl. Geophys.*, **163**(2), 475–502.
- Chen, W.-F. & Lui, E.M., 1997. *Handbook of Structural Engineering*, CRC Press.
- Clinton, J.F., Heaton, T.H. & Favela, J., 2006. The observed wander of the natural frequencies in a structure, *Bull. seism. Soc. Am.*, **96**(1), 237–257.
- Danneels, G., Bourdeau, C., Torgoev, I. & Havenith, H.-B., 2008. Geophysical investigation and dynamic modelling of unstable slopes: case-study of Kainama (Kyrgyzstan), *Geophys. J. Int.*, **175**(1), 17–34.
- Del Gaudio, V., Coccia, S., Wasowski, J., Gallipoli, M. & Mucciarelli, M., 2008. Detection of directivity in seismic site response from microtremor spectral analysis, *Nat. Hazards Earth Syst. Sci.*, **8**, 751–762.
- Del Gaudio, V., Muscillo, S. & Wasowski, J., 2014. What we can learn about slope response to earthquakes from ambient noise analysis: an overview, *Eng. Geol.*, **182**(Part B), 182–200.
- Gallipoli, M.R., Lapenna, V., Lorenzo, P., Mucciarelli, M., Perrone, A., Piscitelli, S. & Sdao, F., 2000. Comparison of geological and geophysical prospecting techniques in the study of a landslide in southern Italy, *Eur. J. Environ. Eng. Geophys.*, **4**, 117–128.
- Guillier, B., Chatelain, J.-L., Bonnefoy-Claudet, S. & Haghshenas, E., 2007. Use of ambient noise: from spectral amplitude variability to H/V stability, *J. Earthq. Eng.*, **11**(6), 925–942.
- Haghshenas, E., Bard, P.-Y., Theodulidis, N. & SESAME, 2008. Empirical evaluation of microtremor H/V spectral ratio, *Bull. Earthq. Eng.*, **6**(1), 75–108.
- Jongmans, D. & Garambois, S., 2007. Geophysical investigation of landslides: a review, *Bull. Soc. Géol. France*, **178**(2), 101–112.
- Jongmans, D., Bièvre, G., Renalier, F., Schwartz, S., Bearez, N. & Orengo, Y., 2009. Geophysical investigation of a large landslide in glaciolacustrine clays in the Trièves area (French Alps), *Eng. Geol.*, **109**(1–2), 45–56.
- Le Roux, O., Cornou, C., Jongmans, D. & Schwartz, S., 2012. 1-D and 2-D resonances in an alpine valley identified from ambient noise measurements and 3-D modelling, *Geophys. J. Int.*, **191**(2), 579–590.
- Levy, C., 2011. Numerical analysis and geophysical study of the dynamic answer of an unstable rock column, *Theses*, Université de Grenoble.
- Levy, C., Baillet, L., Jongmans, D., Mourot, P. & Hantz, D., 2010. Dynamic response of the chamousset rock column (western Alps, France), *J. geophys. Res.*, **115**(F4), F04043, doi:10.1029/2009JF001606 .
- Levy, C., Jongmans, D. & Baillet, L., 2011. Analysis of seismic signals recorded on a prone-to-fall rock column (Vercors massif, French Alps), *Geophys. J. Int.*, **186**(1), 296–310.
- Mainsant, G., Larose, E., Brönnimann, C., Jongmans, D., Michoud, C. & Jaboyedoff, M., 2012. Ambient seismic noise monitoring of a clay landslide: toward failure prediction, *J. geophys. Res.*, **117**(F1), F01030, doi:10.1029/2011JF002159.
- Mendis, P., Ngo, T., Hristos, N. & Hira, A., 2007. Wind loading on tall buildings, *Electron. J. Struct. Eng.*, EJSE Special Issue: Loading on Structures, 41–54.
- Méric, O., Garambois, S., MALET, J.-P., Cadet, H., Gueguen, P. & Jongmans, D., 2007. Seismic noise-based methods for soft-rock landslide characterization, *Bull. Soc. Géol. France*, **178**(2), 137–148.
- Michel, C., Guéguen, P. & Bard, P.-Y., 2008. Dynamic parameters of structures extracted from ambient vibration measurements: an aid for the seismic vulnerability assessment of existing buildings in moderate seismic hazard regions, *Soil Dyn. Earthq. Eng.*, **28**(8), 593–604.
- Mikael, A., Guéguen, P., Bard, P.-Y., Roux, P. & Langlais, M., 2013. The analysis of long-term frequency and damping wandering in buildings using the random decrement technique, *Bull. seism. Soc. Am.*, **103**(1), 236–246.
- Moore, J.R., Gischig, V., Burjánek, J., Loew, S. & Fäh, D., 2011. Site effects in unstable rock slopes: dynamic behavior of the Randa Instability (Switzerland), *Bull. seism. Soc. Am.*, **101**, 3110–3116.
- Moser, F., Jacobs, L.J. & Qu, J., 1999. Modeling elastic wave propagation in waveguides with the finite element method, *NDT&E Int.*, **32**(4), 225–234.
- Mucciarelli, M., Gallipoli, M.R., Di Giacomo, D., Di Nota, F. & Nino, E., 2005. The influence of wind on measurements of seismic noise, *Geophys. J. Int.*, **161**(2), 303–308.
- Nakamura, Y., 1989. A method for dynamic characteristics estimation of subsurface using microtremor on the ground surface, *Q. Rep. Railw. Tech. Res. Inst.*, **30**(1), 25–33.
- Özalaybey, S., Zor, E., Ergintav, S. & Tapirdamaz, M.C., 2011. Investigation of 3-D basin structures in the Izmit bay area (Turkey) by single-station microtremor and gravimetric methods, *Geophys. J. Int.*, **186**(2), 883–894.
- Peltier, A., Massin, F., Bachèlery, P. & Finizola, A., 2012. Internal structure and building of basaltic shield volcanoes: the example of the Piton de la Fournaise terminal cone (La Réunion), *Bull. Volcanol.*, **74**(8), 1881–1897.
- Perrier, L., Metaxian, J.-P., Battaglia, J. & Garaebiti, E., 2012. Estimation of the near-surface velocity structure of the Yasur-Yenkahe volcanic complex, Vanuatu, *J. Volcanol. Geotherm. Res.*, **227–228**, 50–60.
- Rix, G.J., Lai, C.G. & Jr, A.W.S., 2000. In situ measurement of damping ratio using surface waves, *J. Geotech. Geoenviron. Eng.*, **126**(5), 472–480.
- Semblat, J.F., 1997. Rheological interpretation of rayleigh damping, *J. Sound Vib.*, **206**(5), 741–744.
- SESAME, 2004. Guidelines for the implementation of the H/V spectral ratio technique on ambient vibrations. Measurements, processing and interpretation, Tech. rep., SESAME European Research Project WP12 - Deliverable D23-12.
- Starr, A.M., Moore, J.R. & Thorne, M.S., 2015. Ambient resonance of Mesa Arch, Canyonlands National Park, Utah, *Geophys. Res. Lett.*, **42**(16), 6696–6702.
- Toksoz, M.N., Johnston, D.H. & Timur, A., 1979. Attenuation of seismic waves in dry and saturated rocks: I. Laboratory measurements, *Geophysics*, **44**(4), 681–690.

APPENDIX A: NUMERICAL MODELLING OF WIND SPEED EFFECT

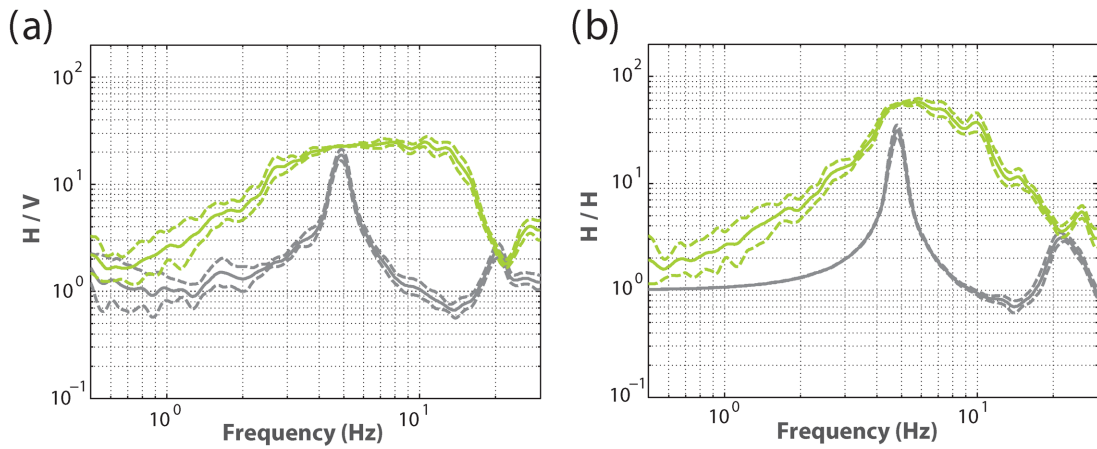


Figure A1. Comparison between numerical modelling results ($T_1 = 4$ m; $D_1 = 15$ m; $E = 10$ GPa) for no-wind (in grey) and strong wind conditions (in green). (a) H/V curves. (b) H/H curves. Plain lines are mean curves and dashed lines represent \pm one standard deviation around the mean. The horizontal wind pressure on the cliff was applied for wind speed S_w between 3 and 5 m s^{-1} (see Fig. 3c).

APPENDIX B: EFFECT OF DAMPING (5 PER CENT)

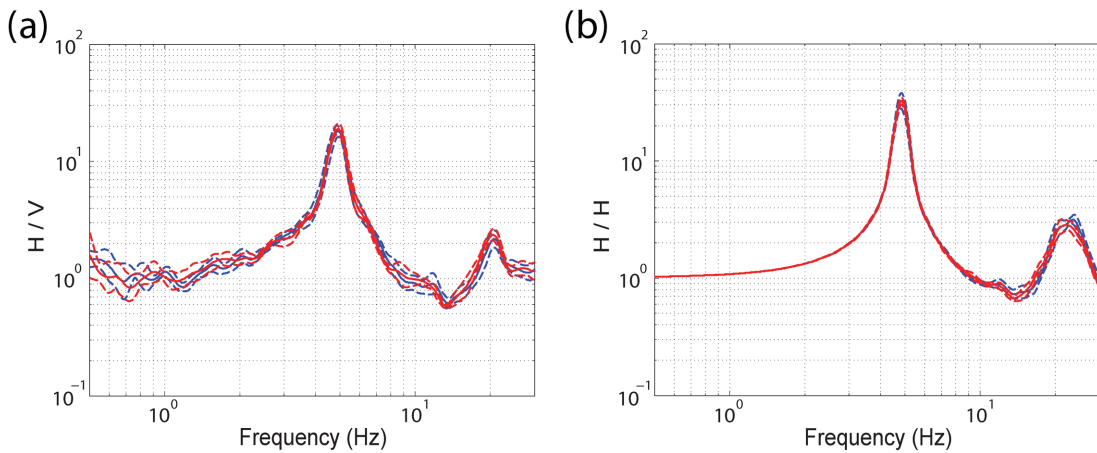


Figure B1. Comparison of the H_1/V_1 and H_1/H_2 spectral ratios computed with and without attenuation (red and blue curves, respectively). Plain lines are mean curves and dashed lines represent \pm one standard deviation around the mean.

APPENDIX C: PARAMETRIC STUDY

Table C1. Values of the dynamic parameters (f_0 , $A_{H/V}$ and $A_{H/H}$) computed from the 54 numerical models with variations of the column characteristics T_1 (thickness), D_1 (fracture depth) and E (Young's modulus).

E (GPa)	T_1 (m)	D_1 (m)	f_0 (Hz)	$A_{H/V}$	$A_{H/H}$
2	2	5	8.898	8.585	24.047
2	2	7.5	4.967	17.660	28.733
2	2	10	2.999	19.180	38.299
2	2	15	1.467	31.656	50.890
2	2	20	0.867	44.640	78.704
2	2	25	0.567	41.930	68.288
2	4	5	10.202	5.432	16.764
2	4	7.5	6.066	10.527	20.676
2	4	10	4.133	13.391	24.620
2	4	15	2.200	17.742	29.746
2	4	20	1.334	29.347	38.156
2	4	25	0.900	35.860	49.797
2	6	5	10.099	4.056	12.655
2	6	7.5	7.068	6.360	17.525
2	6	10	4.665	10.722	19.257
2	6	15	2.700	17.877	24.379
2	6	20	1.700	22.843	28.309
2	6	25	1.199	24.661	36.761
10	2	5	19.180	8.316	28.079
10	2	7.5	10.922	16.110	32.337
10	2	10	6.694	22.845	38.837
10	2	15	3.275	31.129	54.369
10	2	20	1.937	35.991	51.604
10	2	25	1.243	44.130	69.517
10	4	5	21.459	5.251	15.999
10	4	7.5	13.194	8.507	19.104
10	4	10	9.072	13.204	24.118
10	4	15	4.959	19.128	32.421
10	4	20	3.027	30.144	36.696
10	4	25	2.036	32.616	47.463
10	6	5	21.410	4.245	11.434
10	6	7.5	15.117	7.045	16.945
10	6	10	10.410	9.009	19.242
10	6	15	6.000	15.027	22.698
10	6	20	3.836	17.665	32.373
10	6	25	2.640	24.817	34.748
20	2	5	25.843	8.204	25.359
20	2	7.5	15.133	14.374	31.231
20	2	10	9.365	22.026	38.437
20	2	15	4.601	31.437	49.115
20	2	20	2.733	35.508	52.681
20	2	25	1.767	47.812	84.508
20	4	5	28.837	5.613	13.304
20	4	7.5	18.227	9.015	18.565
20	4	10	12.768	14.116	22.614
20	4	15	6.932	18.401	32.293
20	4	20	4.233	24.648	37.089
20	4	25	2.866	32.210	43.506
20	6	5	28.757	4.087	12.489
20	6	7.5	20.736	6.288	14.299
20	6	10	14.398	11.164	20.920
20	6	15	8.466	17.652	24.608
20	6	20	5.401	19.755	28.883
20	6	25	3.735	26.653	38.576

APPENDIX D: EFFECT OF THE DEPTH OF A SECOND FRACTURE (D_2)

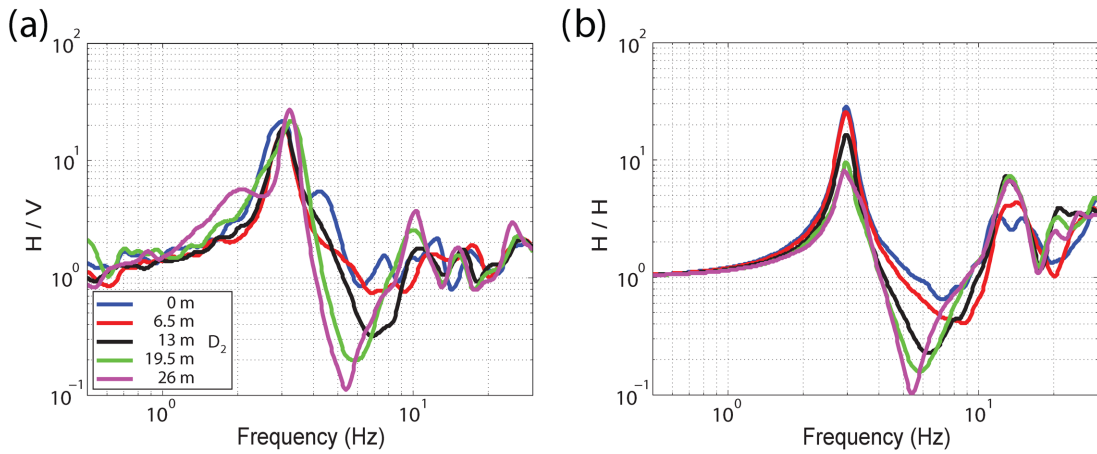


Figure D1. Influence of the depth value of a second fracture (D_2) on the H/V and H/H spectral ratios. The peak of the H/H ratio ($A_{H/H}$) decreases when D_2 reaches the same value as the first fracture depth (13 m).

APPENDIX E: 3-D MODAL ANALYSIS OF THE BORY COLUMN

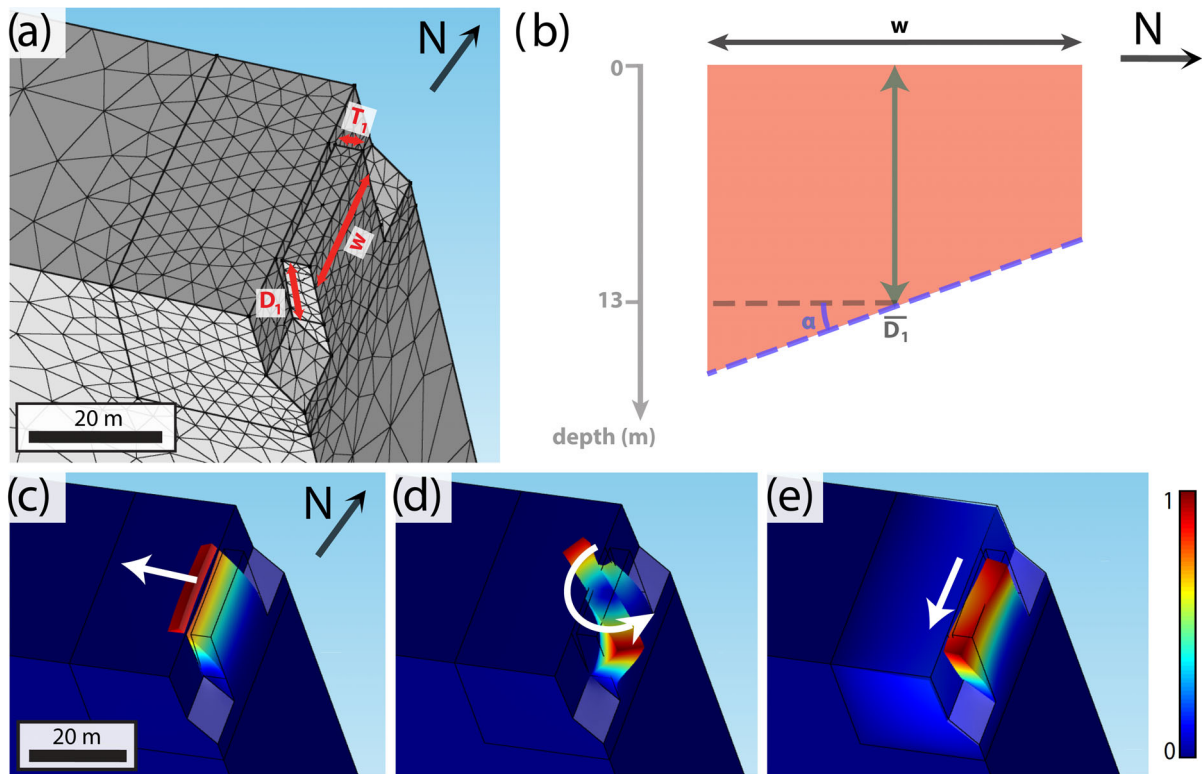


Figure E1. 3-D numerical FE modelling of the dynamic response of the Bory column. (a) Tetrahedral mesh of the model with the column refined zone ($25 \times 25 \times 40$ m) of depth D_1 , thickness T_1 (4 m) and width w (20 m). (b) Geometry of the rear fracture. The fracture bottom (dashed purple line) is located at the average depth D_1 and is tilted by an angle α . (c–e) 3-D modal analysis of the Bory column ($D_1 = 13$ m and $\alpha = 0^\circ$) for the three first resonance modes. The motion scale is normalized by the maximal displacement for each mode: (c) first bending mode (perpendicular to the rear fracture) at 2.78 Hz, (d) second torsion mode at 4.77 Hz and (e) third bending mode (parallel to the rear fracture) at 5.73 Hz. The effect of the rear fracture dip α on the three first resonance modes is shown in Table E1.

Table E1. Characteristics of the rear fracture geometry (D_1 and α : average depth and dip of the fracture bottom, respectively) and frequencies of the three first resonance modes (f_0 : first bending mode; f_1 : second torsion mode; f_2 : third bending mode) for a column with a thickness $T_1 = 4$ m, a width $w = 20$ m and a Young's modulus $E = 2$ GPa.

D_1 (m)	α (degree)	f_0 (Hz)	f_1 (Hz)	f_2 (Hz)
13	0	2.78	4.77	5.73
13	5	2.78	4.80	5.74
13	10	2.79	4.87	5.77
13	15	2.81	4.98	5.82
13	20	2.83	5.13	5.88
13	25	2.87	5.37	5.96
13	30	2.91	5.62	6.08
12	0	3.14	5.17	5.96
14	0	2.64	4.42	5.46

APPENDIX F: EFFECT OF THE SCORIA LAYER

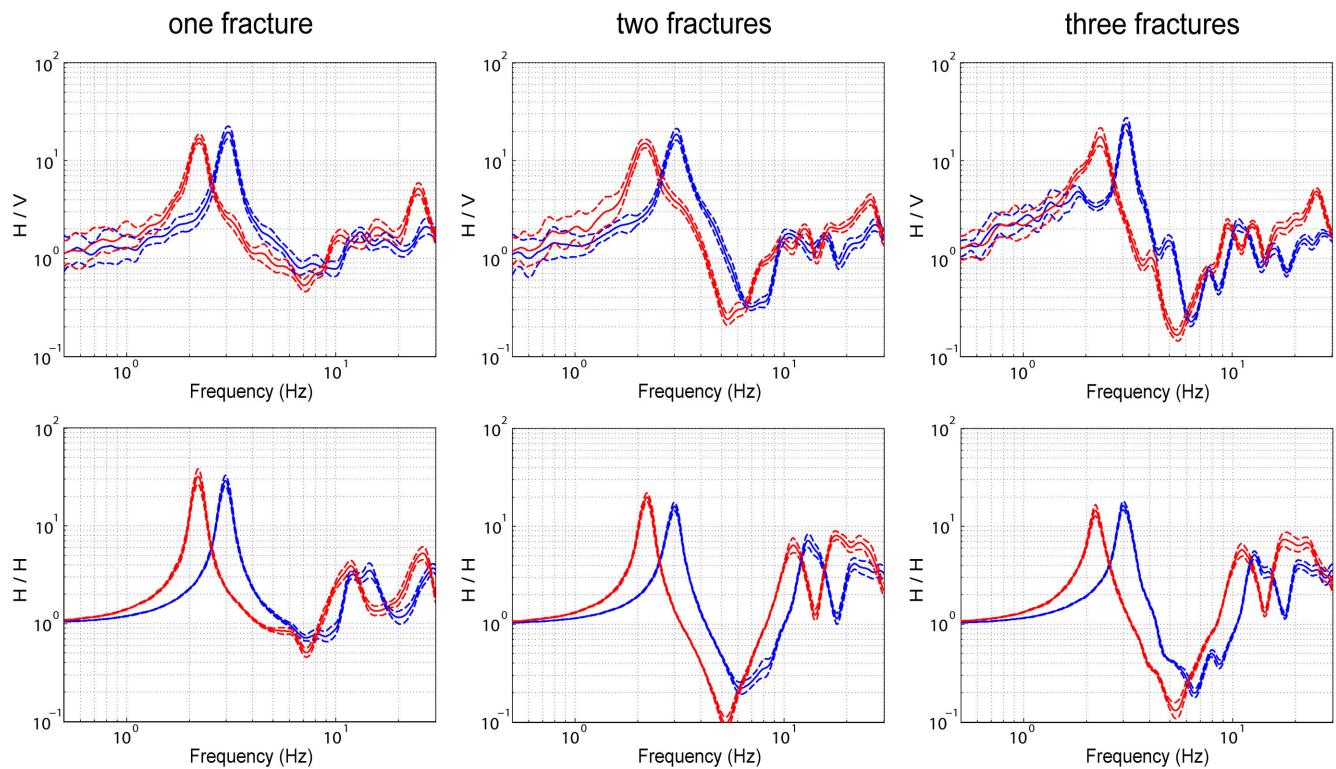


Figure F1. Bory site. Effect of the scoria layer on the H/V (top row) and H/H curves (bottom row) for 1, 2 and 3 fractures. The curves with and without the scoria layer are in red and blue, respectively. The dynamic characteristics in the scoria are $V_p = 800$ m s⁻¹; $V_s = 400$ m s⁻¹, density = 2000 kg m⁻³ and $E = 0.85$ GPa. Plain lines are mean curves and dashed lines represent \pm one standard deviation around the mean.