



HAL
open science

Mechanical stress as a regulator of cell motility

T. Putelat, Pierre Recho, L. Truskinovsky

► **To cite this version:**

T. Putelat, Pierre Recho, L. Truskinovsky. Mechanical stress as a regulator of cell motility. *Physical Review E*, 2018, 97 (1), 10.1103/physreve.97.012410 . hal-02012570

HAL Id: hal-02012570

<https://hal.science/hal-02012570v1>

Submitted on 4 Jan 2021

HAL is a multi-disciplinary open access archive for the deposit and dissemination of scientific research documents, whether they are published or not. The documents may come from teaching and research institutions in France or abroad, or from public or private research centers.

L'archive ouverte pluridisciplinaire **HAL**, est destinée au dépôt et à la diffusion de documents scientifiques de niveau recherche, publiés ou non, émanant des établissements d'enseignement et de recherche français ou étrangers, des laboratoires publics ou privés.

Mechanical stress as a regulator of cell motility

T. Putelat¹, P. Recho² and L. Truskinovsky³

¹*DEM, Queen's School of Engineering, University of Bristol, Bristol, BS8 1TR, United Kingdom*

²*LIPhy, CNRS-UMR 5588, Université Grenoble Alpes, F-38000 Grenoble, France*

³*PMMH, CNRS-UMR 7636, ESPCI PSL, F-75005 Paris, France **

(Dated: October 25, 2017)

The motility of a cell can be triggered or inhibited not only by an applied force but also by a mechanically neutral force couple. This type of loading, represented by an applied stress and commonly interpreted as either squeezing or stretching, can originate from extrinsic interaction of a cell with its neighbors. To quantify the effect of applied stresses on cell motility we use an analytically transparent one-dimensional model accounting for active myosin contraction and induced actin turnover. We show that stretching can polarize static cells and initiate cell motility while squeezing can symmetrize and arrest moving cells. We show further that sufficiently strong squeezing can lead to the loss of cell integrity. The overall behavior of the system depends on the two main dimensionless parameters characterizing internal driving (chemical activity) and external loading (applied stress). We construct a phase diagram in this parameter space distinguishing between, static, motile and collapsed states. The obtained results are relevant for the mechanical understanding of contact inhibition and the epithelial-to-mesenchymal transition.

I. INTRODUCTION

Cell migration plays a key role in ensuring the development, integrity and regeneration of living organisms [1]. Fueled by ATP hydrolysis, cells can self-propel in specific directions due to intricate biochemical and genetic regulation. Cell motility can also be controlled by resultant mechanical forces as it was established in experiments addressing motility initiation and motility arrest [2–5] and is exemplified by force-velocity relations [6].

In this paper we study another mechanical regulation mechanism through balanced force couples that can either squeeze or stretch a cell. The importance of such loading conditions, represented by an applied stress, is corroborated by the fact that cells mostly exist in crowded and therefore mechanically constrained environments and, that essential physiological functions, such as wound healing and tissue regeneration, take place due to collective cell migration [7–9].

There exists considerable experimental evidence from guided migration of cell monolayers on a substrate [7, 10, 11] indicating the presence of a mechanical feedback mediated not only by the pulling forces exerted by leader cells, and traction forces from the substrates, but also by the transmission of mechanical stress through intercellular junctions [12–17]. For instance, stresses appear to be responsible for the fact that cells in confined proliferating monolayers cease their motility when they reach confluence [17], a phenomenon known as contact inhibition (CI) [18]. Stresses are also involved in the epithelial-to-mesenchymal transition (EMT) when destabilization of epithelial layers through the loosening of cell-cell contacts results in an increased cell mobility and ultimately leads to invasive and metastatic behavior [19].

Several experimental protocols, allowing one to stretch or squeeze a cell by externally applied force couples, are currently available, including optical tweezers [20], microfluidic devices [21], atomic force microscopy [22] and photo-thermally activated micropilars [23]. Experiments involving these techniques confirm that stretching is not only an important determinant of the motility status but also a potential regulator of cell differentiation or death [24–27]. A typical explanation of such observations relies on mechanics only indirectly. For instance, the mechano-sensitive nature of ion channels [24, 28, 29] is used as a justification that stretching affects fluxes across the cell membrane. The latter can be responsible for an increased expression of small RhoGTPase (Rho, Rac, Cdc42) regulating the behavior of the cytoskeleton [30, 31]. In the case of EMT, activation of Rho is expected to provoke the nuclear translocation of transcription factors, which promote the expression of EMT-regulating genes controlling the disassembly of cell-cell contacts [32].

In this paper we show that a more direct mechanical interpretation of some of these experimental observations can be obtained from the study of a one-dimensional model of an externally stressed cell crawling on a rigid substrate. A prototypical example of this motility mechanism is provided by cells self-propelling inside rigid channels [33, 34]. The functioning of the mechanical machinery involved in cells crawling is rather well understood [35–43]. In particular the question of how such cells sense gradients and direct their motion over large distances has also been thoroughly studied [44–47]. However, the role of an applied stress still needs to be elucidated.

To highlight the role of stresses in an analytically transparent setting, we represent the cell as a one-dimensional segment of active gel limited by elastically interacting moving boundaries [35, 36, 41, 48]. We develop a version of the active gel theory where actin density is controlled homeostatically and assume that the internal flow gen-

* t.putelat@bristol.ac.uk, pierre.recho@univ-grenoble-alpes.fr, lev.truskinovsky@espci.fr

eration, implying actin turnover, is driven exclusively by myosin contraction [49, 50]; this description is particularly relevant for bulk cells in a tissue which can only produce limited protrusions [8]. We study in this setting the effect on motility of an externally applied mechanical couple with zero resultant. The analysis of the role of the resultant can be found in a companion paper [51].

Our main finding is that mechanical stretching can polarize static cells and initiate their motility while squeezing can symmetrize and arrest moving cells. Depending on the amount of the applied stress, the system exhibits three states: collapsed (cell death), static (symmetric) and motile (polarized). The peculiar nature of the ensuing phase diagram, with one axis representing contraction and another, characterizing applied stress, is due to the fact that the transition between static and collapsed states is discontinuous while the transition between static and motile states is continuous. Interestingly, the critical end point separating the first order transitions from the second order transitions is located in physiologically relevant part of the diagram.

Our general observation is that motility is favored by strong contraction and weak squeezing while sufficiently strong squeezing leads to collapse independently of the strength of the contraction. In the competition between passive tension and active contraction, symmetric immobile configurations represent a delicate balance. Another conceptual result is that the effect of the homeostatic regulation of actin density on motility initiation and cell collapse is rather similar to the effect of the applied stress. The obtained quantitative relations between dimensionless parameters, characterizing various stability thresholds in this problem, may be relevant for a broad range of biological phenomena including EMT and CI.

The paper is organized as follows. In Sec. II we formulate the model and identify three non-dimensional parameters, which fully determine the behavior of the system. In Sec. III we characterize the three distinct steady regimes describing static, collapsed and motile configurations. In Sec. IV we present the phase/regime diagram in the space of dimensionless parameters and delineate the thresholds between different types of behavior. The nature of the implied transitions is elucidated in Sec. V where we also discuss the relevance of the obtained results for biological systems. Sec. VI summarizes our findings and addresses some open problems. In an Appendix we introduce a natural extension of the model which regularizes the phenomenon of contractility-induced collapse.

II. THE MODEL

Consider a prototypical one-dimensional model of a cell fragment confined to a thin channel or a track. We represent such a cell by a continuum segment $x \in [l_-(t), l_+(t)]$ with two moving boundaries $l_-(t)$ and $l_+(t)$.

Actin dynamics. Slow, overdamped motion of the continuously re-polymerizing actin is described by the mass

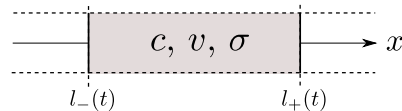


FIG. 1. Schematic representation of a segment of active gel moving on a track.

and momentum balance equations

$$\begin{cases} \rho \partial_x v = (\rho_0 - \rho)/\tau, \\ \sigma_x = \xi v, \end{cases} \quad (1)$$

where $v(x, t)$ is the velocity, $\sigma(x, t)$ is the stress and $\rho(x, t)$ is the density of the filamentous F-actin meshwork. Here, we assumed that inertia is negligible if compared to viscous friction ($\rho v^{-1} dv/dt \ll \xi$) and that the density variation of F-actin in a material particle is small compared to the rate of its chemical turnover ($\rho^{-1} d\rho/dt \ll \tau^{-1}$). The homeostatic density at which the polymerization and depolymerization of F-actin are balanced is denoted ρ_0 [52]. A different model was considered in [41, 50] where the total mass of F-actin was controlled instead of the target density. In cases where actin turnover is distributed inside the cell, rather than being narrowly localized on the boundaries, the present model is more realistic.

Assume next that the internal stress can be represented as a sum of two terms

$$\sigma(\rho, c) = \sigma_a(\rho) + \sigma_m(c),$$

where σ_a is a contribution due to the compressibility of F-actin meshwork and σ_m is a contractile stress due to the presence of myosin II. The myosin motors with concentration $c(x, t)$ actively cross-link F-actin filaments and follow their own dynamics which is detailed below.

To define σ_a , we further suppose that the actin density is close to its homeostatic value $\rho \sim \rho_0$ and therefore we can use the linear approximation $\sigma_a(\rho) \sim -p(\rho_0) - \partial_\rho p(\rho_0)(\rho - \rho_0)$, where $p(\rho_0)$ is the pressure in the homeostatic F-actin meshwork. At the same level of approximation, the mass balance equation (1)₁ reads $\tau \rho_0 \partial_x v \sim \rho - \rho_0$. Combining these two results we obtain the approximate constitutive relation

$$\sigma_a = -p_h + \eta \partial_x v, \quad (2)$$

where $p_h = p(\rho_0)$ is the homeostatic pressure and $\eta = \tau \rho_0 \partial_\rho p(\rho_0)$ is the effective bulk viscosity [53]. Note, the viscosity may also have a different origin [6, 35].

Myosin dynamics. For the stress generated by myosin contraction we assume that $\sigma_m = \chi c$, where $\chi > 0$ is the constant contractility coefficient, see [50] for a nonlinear extension with contractility saturation. To specify the dynamics of myosin we first recall that the motors may be either unbound with concentration $n(x, t)$ or bound with concentration $c(x, t)$ to F-actin filaments. Suppose for simplicity, that the myosin/actin attachment-detachment

dynamics is modeled as a linear reaction with an attachment rate k_b and a detachment rate k_u

$$\begin{cases} \partial_t c + \partial_x(cv) & = k_b n - k_u c, \\ \partial_t n + \partial_x(nv - D_n \partial_x n) & = k_u c - k_b n. \end{cases} \quad (3)$$

Here, we assumed that in addition to being advected by the flow of F-actin, the unbound myosin motors may diffuse with diffusivity D_n , see also [50]. Suppose that the attachment-detachment reaction is close to equilibrium $n/c \sim K_{bu}$ while $K_{bu} = k_u/k_b \ll 1$. If $D := K_{bu} D_n$ in this limit remains finite, combining Eqs. (3) yields the advection-diffusion equation of the bound myosin motors

$$\partial_t c + \partial_x(cv) = D \partial_x^2 c. \quad (4)$$

Eqs. (1)₂ and (4), equipped with the active gel constitutive relation $\sigma = -p_h + \eta \partial_x v + \chi c$, form the closed system for the three unknown fields v , σ and c .

Boundary conditions. As long as there is no F-actin flow through the cell boundaries, the protrusive activity of myosin is neglected, and the two kinematic conditions

$$\dot{l}_\pm = v(l_\pm(t), t), \quad (5)$$

determine the dynamics of the cell fronts; the dot denotes time derivative. Note that conditions (5) do not guarantee conservation of the total mass of actin because of the presence of a bulk exchange with the homeostatic reservoir. In contrast, similar no-flux conditions for myosin motors

$$\partial_x c(l_\pm(t), t) = 0, \quad (6)$$

ensure that the total amount of motors $M = \int_{l_-(t)}^{l_+(t)} c(x, t) dx$ is conserved.

The regulation of cell motility by mechanical stress, which is the main subject of this paper, is implemented through the boundary conditions

$$\sigma(l_\pm(t), t) = \tau_i + \tau_e, \quad (7)$$

where we separate internally and externally generated tractions. The first term τ_i describes the mechanism controlling the cell length through the membrane/cortex tension [54, 55]. We assume for simplicity that $\tau_i(t) = -kL(t)$ where $L(t) = l_+(t) - l_-(t)$ is the cell length and the stiffness is denoted by k [56]. The second term τ_e has its origin outside the cell and is interpreted as stretching if $\tau_e > 0$ and as squeezing if $\tau_e < 0$. It can describe, for instance, the cathedrin-mediated interactions of the cell either with its neighbors or with the extra-cellular environment [6] and will be one of the two main parameters of the problem.

Using (7) and the cell constitutive law, we can rewrite the mechanical boundary conditions in the form

$$\eta \partial_x v(l_\pm(t), t) + \chi c(l_\pm(t), t) = -k(L(t) - L_0). \quad (8)$$

While relations similar to (8) have been previously introduced on phenomenological grounds in [6, 38, 48, 57–59],

name	symbol	typical value
viscosity	η	10^5 Pa s [35, 36]
contractility	χc_0	10^3 Pa [35, 36]
stiffness	k	5×10^8 Pa m ⁻¹ [6]
motors diffusion coefficient	D	10^{-13} m ² s ⁻¹ [50]
viscous friction coefficient	ξ	10^{15} Pa s m ⁻² [35, 60]
homeostatic length	L_0	2×10^{-5} m [36, 48]
characteristic length	$l_0 = \sqrt{\eta/\xi}$	10^{-5} m
characteristic time	$t_0 = \eta/(\xi D)$	10^3 s
characteristic velocity	$v_0 = L_0/t_0$	$72 \mu\text{m h}^{-1}$
characteristic stress	$\sigma_0 = \xi D$	10^2 Pa
contractility parameter	$\mathcal{P} = \chi c_0/\sigma_0$	10
stiffness parameter	$\mathcal{K} = kl_0/\sigma_0$	100
cell length parameter	$\mathcal{L} = L_0/l_0$	2

TABLE I. Estimates of material coefficients and non dimensional parameters definitions.

here we can specify the expression for the *homeostatic* length

$$L_0 = p_h/k + \tau_e/k. \quad (9)$$

The first term in the rhs of (9) represents the internal regulation of the cell length through passive turnover of actin. The second term accounts for external mechanical squeezing or stretching; through this term the environment can also affect the conditions of homeostasis.

Non-dimensionalisation. Choosing $l_0 := \sqrt{\eta/\xi}$ as the characteristic scale of length, $t_0 := \eta/(\xi D)$ as the scale of time, $\sigma_0 := \xi D$ as the scale of stress and $c_0 := M/(\sqrt{\eta/\xi})$ as the scale of motor concentration, we can reformulate the system of governing equations and the boundary conditions in a non-dimensional form. The dimensionless problem depends only on three parameters:

$$\mathcal{P} = \chi c_0/\sigma_0,$$

characterizing the strength of myosin contractility,

$$\mathcal{K} = k/(\sigma_0 l_0),$$

representing the stiffness of the cell's boundary and

$$\mathcal{L} = L_0/l_0,$$

the ratio of the homeostatic length L_0 to the hydrodynamic length l_0 . Typical physiological values for the material and dimensionless parameters in this model are collected in Tab. I.

Dimensionless system. For simplicity, we do not relabel the dimensionless variables and map the free boundary problem into a time-independent domain by introducing the co-moving coordinate $y = [x - l_-(t)]/L(t)$. The main system of equations take the form

$$\begin{cases} -L^{-2} \partial_y^2 \sigma + \sigma = \mathcal{P} c, \\ \partial_t (Lc) + \partial_y (cw) = L^{-1} \partial_y^2 c. \end{cases} \quad (10)$$

Here $w = v - \dot{G} - (y - 1/2)\dot{L}$ is the relative velocity, $G(t) = [l_-(t) + l_+(t)]/2$ is the position of the geometric

center of the cell and $v = L^{-1}\partial_y\sigma$ is the velocity of the F-actin in the laboratory frame of reference. Note that now the stress $\sigma = \mathcal{P}c + L^{-1}\partial_y v$ does not contain the term p_h which has been adsorbed into the homeostatic length L_0 defined in (9). The boundary conditions at $y = \{0, 1\}$ read

$$\sigma = -\mathcal{K}(L - \mathcal{L}), \quad w = 0, \quad \partial_y c = 0. \quad (11)$$

The initial conditions can be chosen in the form $c(y, 0) = c_i(y)$, $l_-(0) = l_-^i$ and $L(0) = L_i$.

From Eqs.(10)₁ and (11)_{1,2} we can obtain the expressions for the cell speed

$$\dot{G} = \frac{\mathcal{P}L}{2} \int_0^1 \frac{\sinh[L(1/2 - y)]}{\sinh(L/2)} c(y, t) dy, \quad (12)$$

and for the rate of change of the cell length

$$\begin{aligned} \dot{L} = & -2\mathcal{K}(L - \mathcal{L}) \tanh(L/2) \\ & - \mathcal{P}L \int_0^1 \frac{\cosh[L(1/2 - y)]}{\cosh(L/2)} c(y, t) dy. \end{aligned} \quad (13)$$

From (12), we see that motility is associated with the emergence of an uneven motor distribution and that symmetrization of the motor distribution can lead to the cell arrest. From Eq. (13) we conclude that the steady-state length results from the interplay between the quasi-elastic, homeostatic resistance and the active shortening due to contractility.

III. STEADY-STATE REGIMES

Steady-state solutions of system (10)–(11) are traveling waves with both fronts moving at the same constant velocity, i.e. $V = \dot{G}$. In such states, the length of the cell is fixed as $\dot{L} = 0$ and $\partial_t c = 0$. The system (10) reduces to

$$\begin{cases} v' = (\sigma - \mathcal{P}c)L, \\ \sigma' = vL, \\ c' = (v - V)cL, \end{cases} \quad (14)$$

where prime denotes the derivative with respect to y . The boundary conditions (11) at $y = \{0, 1\}$ now read

$$\sigma = -\mathcal{K}(L - \mathcal{L}), \quad v = V. \quad (15)$$

Since the velocity V and the length L are to be determined self-consistently, we are left with five unknown constants and the four algebraic conditions (15) must be supplemented by the constraint on the total mass of motors $L \int_0^1 c(y) dy = 1$.

Homogeneous states. The homogeneous solutions of (14) satisfy $v = 0$, $c = 1/L$ and $\sigma = -\mathcal{K}(L - \mathcal{L})$. This class of solutions corresponds to stationary states with $V = 0$. The length of the cell L is determined by the quadratic equation $L^2 - \mathcal{L}L + \mathcal{P}/\mathcal{K} = 0$, which follows

from the condition $\sigma = \mathcal{P}c$. Provided that $\mathcal{P} \leq \mathcal{K}\mathcal{L}^2/4$, the cell has two trivial configurations

$$\hat{L}_\pm(\mathcal{L}, \mathcal{P}/\mathcal{K}) = (\mathcal{L} \pm \sqrt{\mathcal{L}^2 - 4\mathcal{P}/\mathcal{K}})/2, \quad (16)$$

merging at

$$\mathcal{L}_c = 2\sqrt{\mathcal{P}/\mathcal{K}}, \quad L_c = \sqrt{\mathcal{P}/\mathcal{K}}. \quad (17)$$

Collapsed states. At $\mathcal{P} > \mathcal{K}\mathcal{L}^2/4$ the homogeneous solutions do not exist any more because the quasi-elastic resistance is not reinforced sufficiently by the external stretching to resist the contraction. The possibility of contraction-induced cell collapse can also be seen in a vertex model setting [61].

To understand more clearly the ensuing singular behavior we need to look at the transient dynamics leading to the cell collapse. The asymptotic behavior of the solution of (10)–(11) when the length of the cell L is vanishingly small can be represented in the form of the expansions

$$\begin{aligned} c(y, t) &= c_{-1}(y)L^{-1}(t) + c_0(y)L^0(t) + \dots \\ v(y, t) &= v_{-1}(y)L^{-1}(t) + v_0(y)L^0(t) + \dots \\ \sigma(y, t) &= \sigma_{-1}(y)L^{-1}(t) + \sigma_0(y)L^0(t) + \dots \end{aligned}$$

The substitution of these expansions into the equations gives the leading terms

$$\begin{aligned} c_{-1}(y) &= 1, \\ v_{-1}(y) &= 0, \quad v_0(y) = \mathcal{P}(1/2 - y), \\ \sigma_{-1}(y) &= 0, \quad \sigma_0(y) = \mathcal{K}\mathcal{L}. \end{aligned}$$

In addition we obtain $\dot{L}(t) = -\mathcal{P}$ and $\dot{G}(t) = 0$, which means that a static cell segment collapses in finite time $O(\mathcal{P}^{-1})$. In the process, the motor concentration diverges while remaining spatially homogeneous.

The singular behavior of solutions signifies the failure of some of the model assumptions and it is necessary to find a physically informed regularization of the model which removes the singularity. The two natural paths is to reinforce the length-regulating mechanism and/or to saturate the activity of motors at large concentrations.

Focusing first on the length regulating mechanism we may assume that the effective spring accounting for the global homeostatic feedback, is nonlinear. Then (8) can be rewritten in the form

$$\eta\partial_x v(l_\pm(t), t) + \chi c(l_\pm(t), t) = -k[L - L_0 f(L)], \quad (18)$$

where $f(L)$ is a function approaching 1 as $L \rightarrow \infty$ and diverging as $L \rightarrow 0$. A simple choice ensuring the desired behavior is $f(L) = 1 + (L_f/L)^\alpha$, where L_f is a new characteristic length and α is a phenomenological exponent. A physical motivation for the choice of $\alpha = 2$ is presented in Appendix A.

We can also account for a size dependent motor contractility which describes the effects of crowding-related

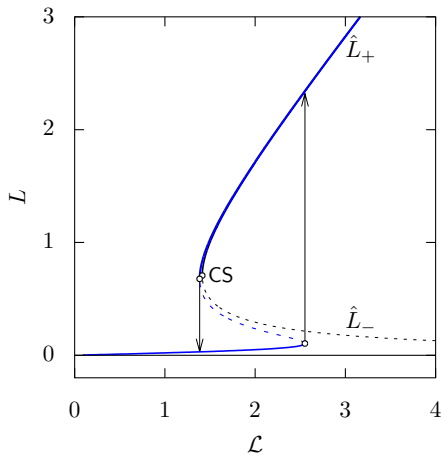


FIG. 2. Length of the homogeneous cell as a function of \mathcal{L} in the non-regularized case (black line) and in the regularized case (blue line). The horizontal solid black line shows collapsed solutions in the non-regularized model. The chosen regularization corresponds to $g = h = 1$, $L_f = 0.1$ and $\alpha = 2$. Parameter: $\mathcal{P}/\mathcal{K} = 0.5$.

frustration at small cell lengths. To this end we can replace χ by $\chi g(L)$ where, for instance, $1/g(L) = 1 + (L_g/L)^\beta$ with L_g as another characteristic length and β as another phenomenological exponent. We may also assume that the total number of attached motors is bio-chemically regulated at the global level [62] so that it decreases with the cell length. In this case, we should replace M by $Mh(L)$ where, for instance, $1/h(L) = 1 + (L_h/L)^\gamma$ with L_h – yet another characteristic length and γ – another phenomenological exponent.

Note that all these sigmoidal dependencies belong to the class of Hill-Langmuir equations with the coefficients α, β, γ usually quantifying the degree of cooperativity. They must be non-negative and sufficiently large to prevent the collapse of a cell. More precisely, since the cell length can be found from the dimensionless algebraic equation $\mathcal{P}h(L)g(L) = -LK[L - \mathcal{L}f(L)]$, we conclude that for L much larger than any of the regularizing lengths, the solution coincides with (16) but for sufficiently small L and $\alpha + \beta + \gamma > 1$ there will be another branch $\hat{L} = (\mathcal{K}\mathcal{L}/\mathcal{P})(L_f^\alpha L_g^\beta L_h^\gamma)^{1/\nu}$, where $\nu = \alpha + \beta + \gamma - 1$. The associated velocity, stress and motor concentration can then be found from the relations $\hat{\sigma} = \mathcal{K}L(L_f/L_r)^\alpha$, $\hat{v} = 0$ and $\hat{c} = L_r^{\gamma-1}/L_h^\gamma$.

An example of the coexistence of the two branches is presented in Fig. 2 (blue line). As we see, the collapse of the cell induced by squeezing takes place discontinuously near the critical value of \mathcal{L} given by (17). Interestingly, the regularized theory also predicts an inverse transition from collapsed to non-collapsed state when \mathcal{L} increases. The ensuing hysteresis is reminiscent of what happens in the three-dimensional theory of cytokinesis [63], which suggests that a possible interpretation of the collapsed states could be associated with cell division. The ambi-

guity is due to the fact that our prototypical model cannot really distinguish between various modalities of the abrupt loss of cell integrity, in particular, it can confuse cell death with cell division.

Integral equation. System (14) cannot be solved analytically in the general case. However, to obtain some useful asymptotic representations of inhomogeneous solutions, it is convenient to reformulate (14) as a non-linear integral equation. First, by combining (14)₂ and (14)₃, the motor concentration is expressed in the form

$$c(y) = \frac{1}{L} \frac{e^{\Psi(y)}}{\int_0^1 e^{\Psi(y)} dy}, \quad (19)$$

where $\Psi(y) = \sigma(y) - VLy$. In turn, the stress field can be written as

$$\sigma(y) = \mathcal{P}L \int_0^1 \phi(y, z)c(z)dz + \bar{\sigma}f(y), \quad (20)$$

where the stress on the boundary is $\bar{\sigma} = -\mathcal{K}(L - \mathcal{L})$. Introducing the Heaviside function $H(x)$, we express the auxiliary functions in (20) as

$$\begin{aligned} \phi(y, z) &= \frac{\sinh[L(1-z)] \sinh(Ly)}{\sinh(L)} \\ &\quad - H(y-z) \sinh[L(y-z)], \\ f(y) &= \frac{\cosh(Ly)[1 - \cosh(L) + \sinh(L)]}{\sinh(L)}. \end{aligned}$$

Using the boundary conditions, we can now link the cell velocity V and its length L to the concentration field with

$$V = \mathcal{P}L \int_0^1 \alpha(y)c(y)dy, \quad \bar{\sigma} = \mathcal{P}L \int_0^1 \beta(y)c(y)dy, \quad (21)$$

where

$$\alpha(y) = \frac{\sinh[L(1/2 - y)]}{2 \sinh(L/2)}, \quad \beta(y) = \frac{\cosh[L(1/2 - y)]}{2 \sinh(L/2)}.$$

Finally, collecting all these expressions together, we obtain an integral representation for $\Psi(y)$

$$\Psi(y) = \mathcal{P}L \int_0^1 [\phi(y, z) + f(z)\beta(z) - Ly\alpha(z)] c(z)dz. \quad (22)$$

Substituting (22) into (19) we obtain the desired integral equation for $c(y)$.

Inhomogeneous steady states. Non-singular solutions of (14) can be of motile or static type depending on the symmetry of the motor distribution, see (12). The stability analysis presented in Sec. IV suggests that the only stable inhomogeneous solutions are nonsymmetric motile states with myosin motors localized at the trailing edge; in view of the reflectional symmetry of the problem such solutions appear in pairs. Below we show that an asymptotic representation of such motile solutions can be computed analytically in the double limit $\mathcal{P} \rightarrow \infty$ and $\mathcal{K} \rightarrow \infty$ with the ratio $r = \mathcal{P}/\mathcal{K}$ remaining finite.

Suppose that one of the twin configurations $c(y)$, solving the nonlinear integral equation (19), has a maximum at $y = 0$ and decays to zero away from this point. To obtain an asymptotic representation of such a solution, we rescale the concentration field $\tilde{c}(u) = \mathcal{P}^{-1}c(u/\mathcal{P})$, where we introduced the blow-up spatial coordinate $u \in [0, \mathcal{P}]$. Using the method of matched asymptotic expansions, we obtain the asymptotic analog of (22)

$$\Psi(u) \simeq L \int_0^\infty R(u, v) \tilde{c}(v) dv + \text{const}, \quad (23)$$

with the kernel

$$R(u, v) = \begin{cases} \frac{L}{2}(v - 2u) & \text{if } u \leq v \\ -\frac{L}{2}v & \text{if } u > v. \end{cases}$$

Note that the constant in (23) is irrelevant because it does not affect (19).

We now reformulate the integral equation (19) in a simpler form

$$\tilde{c}(u) = \frac{e^{L^2\Phi(u)}}{L \int_0^\infty e^{L^2\Phi(v)} dv}, \quad \Phi(u) = \int_0^u (v - u) \tilde{c}(v) dv. \quad (24)$$

The remaining parameter r enters these relations indirectly through the cell length L which is still unknown.

Given that $\Phi'(u) = -\int_0^u \tilde{c}(v) dv$ and $\Phi''(u) = -\tilde{c}(u)$, we then rewrite (24) in the form

$$L\Phi''(u) \int_0^\infty e^{L^2\Phi(v)} dv + e^{L^2\Phi(u)} = 0. \quad (25)$$

Using the boundary conditions $\Phi(0) = \Phi'(0) = 0$, we integrate (25) explicitly

$$-\frac{L^2}{2} (\Phi'(u))^2 = \frac{e^{L^2\Phi(u)} - 1}{L \int_0^\infty e^{L^2\Phi(v)} dv}. \quad (26)$$

Since $\Phi(\infty) = -\infty$ and $\Phi'(\infty) = -1/L$, we conclude that $L \int_0^\infty e^{L^2\Phi(v)} dv = 2$ and then explicit integration of (26) gives $\Phi(u) = L^{-2} \cosh^{-2}(Lu/2)$ and

$$c(y) = \frac{\mathcal{P}}{2 \cosh^2(\mathcal{P}Ly/2)}. \quad (27)$$

The corresponding velocity and stress distributions can be also written explicitly.

If we combine (27) with (21)₁ we find a simple asymptotic expression for the cell velocity $V = \mathcal{P}/2$. Further substitution of (27) into (21)₂ produces the algebraic equation for the cell length L

$$(\mathcal{P}/2) \coth(L/2) = -\mathcal{K}(L - \mathcal{L}). \quad (28)$$

The obtained results show that the motors distribution becomes infinitely localized in the limit $\mathcal{P} \rightarrow \infty$. If we also assume that $\mathcal{P} \sim r\mathcal{K}$ where r is finite we obtain that (28) has solutions if and only if

$$(r/2)\sqrt{4/r+1} \leq \mathcal{L} - 2 \sinh^{-1}(\sqrt{r}/2). \quad (29)$$

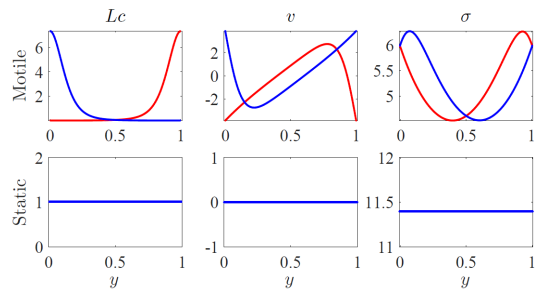


FIG. 3. Solution profiles for $\mathcal{P} = 10$ and two values of \mathcal{L} . The motile solutions correspond to $\mathcal{L} = 2$ and the homogeneous static state to $\mathcal{L} = 1$. For the motile solutions, whether the cell velocity is positive (motors are localized near the boundary $y = 0$, blue curve) or negative (motors are localized near the boundary $y = 1$, red curve) depends on the initial noise ζ , however both configurations are equi-probable. Parameter: $\mathcal{K} = 100$.

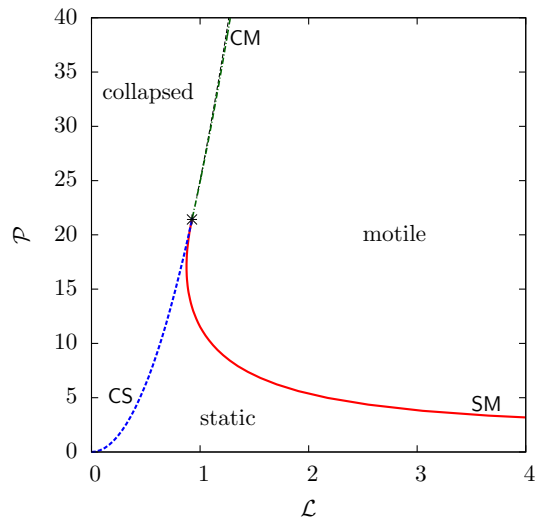


FIG. 4. The diagram in the parameter plane $(\mathcal{L}, \mathcal{P})$ showing the three reachable configurations, *motile* (M), *static* (S) and *collapsed* (C), given the initial data indicated in the text. The dashed blue and solid red lines correspond to CS and SM thresholds, respectively. The black dashed line, essentially overlapping with the green dash-dotted line, indicates the approximation of the CM threshold given by (30). Parameter: $\mathcal{K} = 100$.

Inequality (29) represents the collapse condition and, from (28), we see that the collapse of a motile cell takes place at finite length $L = 2 \sinh^{-1}(\sqrt{r}/2)$. In the limit $\mathcal{L}r \ll 1$, condition (29) takes a particularly simple form

$$\mathcal{P} \leq \mathcal{K}\mathcal{L}^2/4. \quad (30)$$

Observe that (30) coincides with (17), which suggests that the inhomogeneity of motor concentration affects only weakly the onset of the transition from regular to singular regimes.

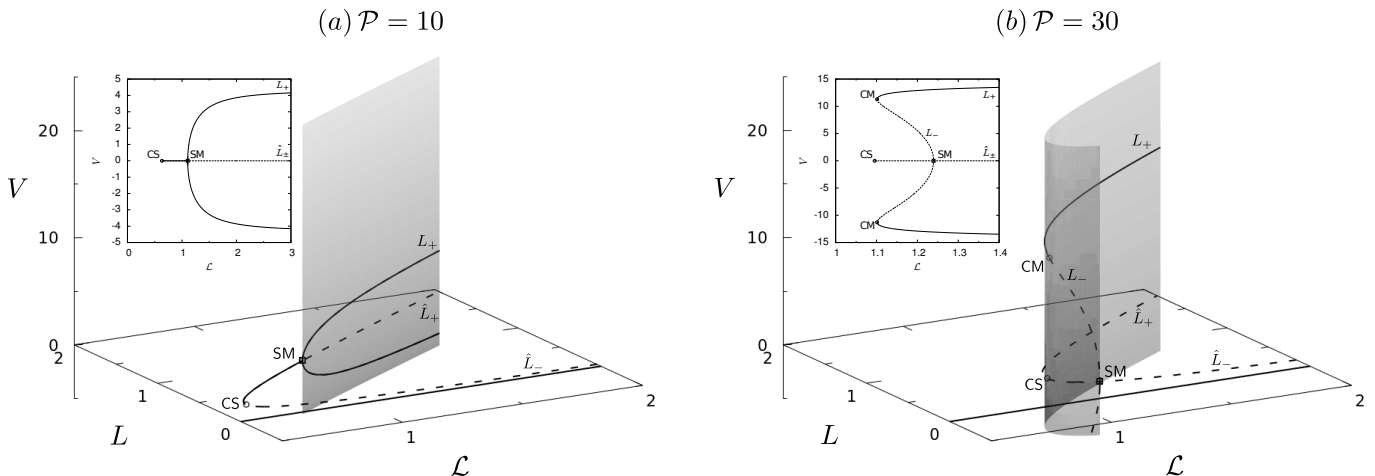


FIG. 5. Typical bifurcation diagrams with the homeostatic length \mathcal{L} chosen as a parameter: (a) below the critical end point $\mathcal{P} = 10 < \mathcal{P}_*$ and (b) above the critical end point $\mathcal{P} = 30 > \mathcal{P}_*$. Solution branches representing stable attractors in the initial value problem (10)–(11) are shown by solid lines; locally unstable solutions are presented by dotted lines. Inserts represent projections of the 3D diagram on the (\mathcal{L}, V) parameter plane. Parameter $\mathcal{K} = 100$.

IV. PHASE DIAGRAM

To identify stable traveling wave solutions we solved numerically a set of initial value problems for the original non-steady system (10)–(11). We fixed parameter \mathcal{K} , whose effect on the behavior of the system has been studied earlier [50], and focused on the parameter space $(\mathcal{L}, \mathcal{P})$. As initial data we used $L_i = \mathcal{L}$ and $c_i(y) = 1/\mathcal{L} + \zeta(y)$ where ζ is a random perturbation with zero average. We integrated (10)–(11) numerically, analyzing transients as the system approached one of the steady states, see [50] for the method.

The outcomes of our numerical experiments fell into three categories: (i) convergence to a motile solution with motors localized at the trailing edge (M, top row in Fig. 3); (ii) convergence to a homogeneous static solution of the \hat{L}_+ type (S, bottom row in Fig. 3); and (iii) collapsing solution approaching a singular state C in a finite time. The stability domains of these three ‘phases’ within the $(\mathcal{L}, \mathcal{P})$ -plane are shown in Fig. 4.

Stability thresholds. The motile (M), static (S) and collapsed (C) regimes are separated by three boundaries which meet at a triple point (symbol * on Fig. 4): the line CS separates collapsed and static (\hat{L}_+) solutions, the line SM separates static and motile solutions and the line CM separates collapsed and motile solutions.

The CS line is captured by condition (17) because beyond this line static homogeneous solutions cease to exist. The change of the regime here is abrupt and can be interpreted as a *first order transition*.

The SM line can be also described analytically if we linearize (10)–(11) around the homogeneous solution \hat{L}_+ and study the limits of linear stability of the homogeneous solution. A standard analysis [41, 50] gives the instability condition $\tanh(\omega/2)\hat{L}_+ = \mathcal{P}\omega/2$, where

$\omega = (\hat{L}_+^2 - \mathcal{P}\hat{L}_+)^{1/2}$. The bifurcation is of pitchfork type and can be interpreted as a *second order phase transition*. Note that a mild generalization of the model accounting for the saturation of contractility as a function of the motor concentration turns the supercritical bifurcation into a subcritical bifurcation [50].

The CM line, separating motile and collapsed states and corresponding to another *first order transition*, cannot be expressed analytically. However, at large values of \mathcal{P} and \mathcal{K} such that $\mathcal{K}\mathcal{L}/\mathcal{P} \ll 1$, this transition is asymptotically captured by condition (29). For the realistic parameters used in Fig. 4, expression (29) provides a remarkably good approximation for the CM line starting already at the triple point.

The coordinates of the triple point $(\mathcal{L}_*, \mathcal{P}_*)$, which in view of the nature of the SM, CM and CS transitions should be rather called the ‘critical end point’, can be found as the intersection of the CS and SM lines. Therefore $\mathcal{P}_* = \mathcal{K}\mathcal{L}_*^2/4$, where \mathcal{L}_* satisfies the equation $2 \tanh(\omega_*/2) = \mathcal{K}\omega_*\mathcal{L}_*^2/4$ with $\omega_*^2 = \mathcal{L}_*^2(\mathcal{K}\mathcal{L}_*^2 - 2)/8$.

Bifurcation patterns. To understand better the relation between different types of traveling wave solutions in this problem, we used a numerical continuation method [64] with parameter \mathcal{L} varying around the critical end point. We found that, in full agreement with the analysis above, the bifurcation diagrams can be of two types depending on the value of the parameter \mathcal{P} , see Fig. 5.

At $\mathcal{P} < \mathcal{P}_*$ the motile solution bifurcates from the homogeneous solution \hat{L}_+ through a supercritical pitchfork, which we interpret as a continuous phase transition at a critical value of the parameter \mathcal{L} given by the instability condition. We recall that the locus of these points in the parameter space $(\mathcal{L}, \mathcal{P})$ is represented in Fig. 4 by the red solid line SM.

While the degenerate collapsed solutions are not reach-

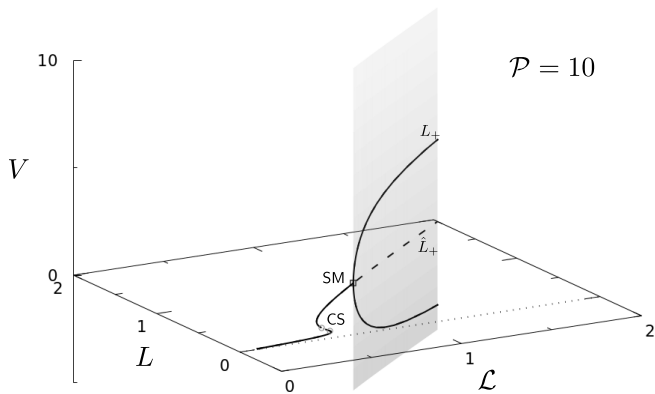


FIG. 6. An example of bifurcation diagram for the regularized model with $g = h = 1$, $L_f = 0.1$, $\alpha = 2$. Parameters: $\mathcal{P} = 10$ and $\mathcal{K} = 100$.

able by the continuation method, we also show in Fig. 5 the collapsed solutions with zero length. Observe that those are the only possible solutions if the parameter \mathcal{L} is below the turning point CS. The locus of the turning points CS is shown in Fig. 4 by a dashed blue line given by (17).

The collapsed solutions are more adequately represented by the regularized models discussed in Sec. III. In Fig. 6 we show a regularization-induced modification of the bifurcation diagram presented in Fig. 5(a) for the system (10) with $g(L) = h(L) = 1$ and $f(L) \neq 1$. A comparison of Fig. 6 and Fig. 5(a) shows that regularization did not affect significantly the bifurcation from static to motile solutions even though now there is a finite coexistence domain between collapsed and non-collapsed static solutions (illustrated in more detail in Fig. 2).

Returning to the original, non-regularized setting, we now consider the second type of behavior of the system corresponding to the range $\mathcal{P} > \mathcal{P}_*$ where the motile solutions bifurcate from the unstable branch of the homogeneous static solutions \hat{L}_- . Along the bifurcated motile branch, there is now a turning point CM where the stability of the motile regimes in the full time dependent problem (10)–(11) is lost. If \mathcal{L} is decreased beyond this turning point, there are no more non-degenerate stable static solutions and, this is the reason why our numerical experiments showed in this range a discontinuous transition to the collapsed state, see Fig. 5(b). The locus of the CM turning points in the parameter space $(\mathcal{L}, \mathcal{P})$ is shown in Fig. 4 by a green dashed line.

Sensitivity to initial data. Since our numerical study of the time dependent problem (10)–(11) was necessarily limited in scope, the actual basin of attraction of each of our three main regimes (static, motile and collapsed) was not fully mapped in the space of parameters describing the initial data. We have found however, that the phase diagram in Fig. 4 is robust with respect to rather general perturbations of the initial concentration field.

The dependence of the results on the choice of the initial length is more sensitive. For instance, choosing the

initial length in the range $L_i \leq \hat{L}_-$ leads to a collapse independently of the value of \mathcal{P} and \mathcal{L} . This empirical result can be supported by the observation that for configurations with homogeneous distribution of myosin Eq. 13 reduces to

$$\dot{L} = -2\mathcal{K} \tanh(L/2)(L - \hat{L}_-)(L - \hat{L}_+)/L. \quad (31)$$

This equation reaffirms that the homogeneous state \hat{L}_+ is stable with the basin $] \hat{L}_-, \infty[$, while the state \hat{L}_- is unstable and any initial state with $[0, \hat{L}_-[$ should unconditionally collapse.

V. DISCUSSION

Observe, that the active mechanism in our model, whose strength scales with parameter \mathcal{P} , is responsible for two different physical effects.

On the one hand, an increase of \mathcal{P} can lead to a collapse of a homogeneous configuration of a cell. This implies breaking the balance between motor contractility and the effective quasi-elastic resistance. The transition is discontinuous (first order) even though appropriate regularization of the problem can prevent the formation of a singularity.

On the other hand, an increase of \mathcal{P} can be also responsible for the loss of homogeneity and the emergence of polarity. If the incipient concentration gradients are not suppressed by diffusion, motors localize and the cell starts to move. The threshold of such instability is sensitive to the homeostatic length \mathcal{L} because the homogenizing effect of diffusion is much more potent in a small domain than in a large domain. In contrast to the collapse transition, the motility transition is continuous (second order).

Now, the emergence of the three main configurations – *motile*, *static* and *collapsed* – becomes natural. At $\mathcal{P} < \mathcal{P}_*$ the homogeneous solution \hat{L}_+ is replaced by a motile solution at sufficiently large value of \mathcal{L} when the diffusion is no longer sufficient to prevent the contraction-induced drift. On the contrary, when \mathcal{L} decreases below sufficiently small value, the homogeneous contraction overcomes the cell elastic resistance which triggers the collapse. In between, there is a finite interval of sufficiently small values of \mathcal{L} , where stable static solutions exist. In the $\mathcal{P} > \mathcal{P}_*$ range, both the symmetrization and the collapse take place simultaneously at a single threshold. The main conclusion is that stable non-trivial static configurations are delicate and may be achievable only in the presence of stretching force dipoles applied to the cell from the environment.

We now interpret these findings in the context of tissue homeostasis. Cells in tissues are typically subjected to stresses exerted by their neighbors and mediated by adherens junctions [65]. For instance, when epithelial cells reach confluence, they become caged by their neighbors and the formation of adherens junctions effectively jams

the cell monolayer through a process known as contact inhibition (CI) [17]. The tension in such monolayers has been monitored using AFM indentation [66] and, during the initial formation of the monolayer when E-cadherin clusters are formed between the cells that are still polarized, the tension and the surface area of the cells increase indicating a rise of the homeostatic length. After this initial stage, the monolayer tension significantly drops. If we interpret this drop as a decrease of \mathcal{L} , the observed cell symmetrization within a monolayer becomes natural. Interestingly, the predicted transition from symmetric to collapsed state at even smaller values of \mathcal{L} , has been also observed in monolayers. As explained in [67], local decrease of the tensile stress in a tissue can lead to the increase of tissue density (i.e. smaller homeostatic length), which triggers cell extrusion events. The latter may be associated with our cell collapse, see also [27, 68, 69].

It is also known that scratch-wound assays and laser ablations [70–72] reduce the compressive stresses by creating an available free space. Our model shows that such a reduction could be sufficient for the spontaneous initiation of motility of the leader cells at the margin of the tissue. This puts the tissue under tension [73, 74] and further increases bulk motility needed to heal the wound. Chemotactic signaling is clearly also necessary for normal wound closure. However, the importance of mechanics is corroborated by the observation that a moderate external cell stretching accelerates wound closure [75].

The closely related phenomenon of the epithelial-to-mesenchymal transition (EMT) is of significant interest because of its central role in diseases such as fibrosis and cancer [76]. It is known that the mechanosensitive activation pathways of EMT involve both exogeneous and endogeneous stresses supported by the cytoskeleton, see [19] and references therein. If an external stress is applied to a cell in a tissue, parameter \mathcal{L} will increase, leading to the mechanical loss of stability of a static configuration. The ensuing F-actin flow is characterized by a polymerization of the F-actin meshwork at the cell front. Such a polymerization reduces the pool of G-actin with which a transcription factor MRTF-A is normally associated. This transcription factor then becomes free to accumulate in the cell nucleus where it promotes the expression of the genes regulating the dis-assembly of cell-cell contacts, which ultimately liberates the cell from the entanglement with its neighbors.

While a direct pharmaceutical activation of the Rho pathway, which is known to affect the remodeling of the cytoskeleton, can also trigger the nuclear translocation of MRTF-A, our model suggests that both, internal and external stress creation, can generate alternative mechanical pathways regulating the polarization of cells and controlling in this way the emergence of EMT.

VI. CONCLUSIONS

Cell motility is affected by externally applied forces. Here we argue that not only the resultant, but also the distribution of applied forces matters, in particular, that cell migration may be sensitive to mechanically balanced force couples with zero resultant. This may sound surprising since such couples can squeeze or stretch the cell but do not impose explicit directionality.

To study the effect of the applied force couples, we employed a one-dimensional model incorporating active myosin contraction and accounting for the induced actin turnover. We showed that a symmetrization and a spontaneous motility arrest of a polarized cell can result from squeezing of a steadily moving cell. Conversely, we showed that if squeezing is relaxed, a static symmetric cell may get again polarized and start to move. An analytical study of the model revealed the exact amount of mechanical stress needed to polarize a static cell and arrest a moving cell.

The proposed model predicts further that sufficiently strong squeezing can lead to the loss of cell integrity and discontinuous collapse of the cell to (almost) zero length. We argued that possible interpretations of the collapsed states could be associated with cell division or death.

The obtained phase diagram in the space of non-dimensional parameters distinguishes between motile, static and collapsed configurations of the cell. It can be relevant for the study of epithelial-mesenchymal (EM) transition and may help to understand the mechanical aspects of contact inhibition (CI). For instance, the model suggests that an increased cell tension may lead to cell polarization emulating EM transition. Instead, squeezing can be the origin of polarity loss which is a characteristic feature of the CI phenomenon.

Interestingly, our model reveals that self-induced squeezing associated with the active cortical contraction can lead to symmetrization and cell arrest even in the absence of the confining environment. Another insight is that internal homeostatic pressure, originating from actin turnover, may act quantitatively similar to the externally applied stress as a factor promoting cell polarization and motility.

A shortcoming of our analytically tractable model is that neither static solutions nor regularized collapsed solutions carry a nontrivial F-actin flow. Such flows, however can be recovered in this framework if we assume that contractility is space dependent and controlled by independent bio-chemical pathways [63]. Another weakness of the model is the neglect of protrusive stresses at the leading edge associated with actin polymerization. We also left aside the important question of the interplay between the resultant force and the applied force couple, which will manifest itself in a stress dependence of the force-velocity relations. All these issues require further research.

Despite these limitations, we expect that the transparency of the proposed model will motivate focused ex-

perimental investigations of the predicted transitions between different regimes and inspire the development of bio-mimetic devices imitating rich mechanical behavior of crawling cells. Moreover, by accounting for the whole spectrum of external loadings, the model bridges cellular and tissue scales, and opens new perspectives in the design of the artificial analogs of collective cellular motility.

ACKNOWLEDGEMENTS

T.P. acknowledges support from the EPSRC Engineering Nonlinearity project EP/K003836/1. L.T. was supported by the French Government under the Grant ANR-10-IDEX-0001-02 PSL.

Appendix A

We represent a cell by a slab of height H and length L , confined to a track of constant width W . The slab is modeled as a solution of bio-polymers enclosed in a plasmic membrane which adheres to the track.

The free energy of the system \mathcal{F} is the sum of the surface energy \mathcal{F}_s and a confinement energy \mathcal{F}_c , see [77]. The surface energy can be written in the form $\mathcal{F}_s = 2\gamma_m(LW + LH + WH) - \gamma_s LW$ where $-\gamma_s < 0$ is the

cell/substrate surface tension showing that spreading is energetically favored and $\gamma_m > 0$ is the conventional surface tension of the free membrane. The confinement energy is assumed to be of entropic nature, accounting for the presence of Gaussian polymers inside the slab. The simplest expression then is $\mathcal{F}_c = A(1/H^2 + 1/W^2 + 1/L^2)$ where A is a rheological coefficient whose value depends on the nature of the polymers [78].

Suppose next that while the surface area of the cell can change through the addition of lipids to the membrane [55], the cell volume Ω remains constant, tightly regulated by an active osmotic balance between the cell interior and exterior [79–81]. Using the geometrical constraint $\Omega = LHW$, we then eliminate height H from the expression of the free energy to obtain $\mathcal{F} = -\gamma_s LW + 2\gamma_m(LW + \Omega/W + \Omega/L) + A[(LW/\Omega)^2 + 1/W^2 + 1/L^2]$.

The internal traction $\tau = -(HW)^{-1}\partial_L\mathcal{F}$ takes the form

$$\tau = -\frac{\gamma L}{\tilde{L}_f^2 \tilde{L}_0} \left\{ L \left[1 - \left(\frac{\tilde{L}_f}{L} \right)^4 \right] - \tilde{L}_0 \left[1 + \frac{\gamma_m}{\gamma} \left(\frac{\tilde{L}_f}{L} \right)^2 \right] \right\}, \quad (\text{A1})$$

where $\tilde{L}_f = \sqrt{\Omega/W}$, $\tilde{L}_0 = \gamma\Omega^2/(2AW)$ and $\gamma = \gamma_s - 2\gamma_m > 0$. In the regime $L \gg H$, describing cell spreading, we can drop the fourth power term in (A1). If we further assume that $L \sim \tilde{L}_0$, we obtain Eq. 18 with $\alpha = 2$, however, our main conclusions about the effect of regularization will survive even without this assumption.

-
- [1] B. Alberts, A. Johnson, J. Lewis, D. Morgan, M. Raff, K. Roberts, and P. Walter, *Molecular Biology of the Cell*, 6th ed. (Taylor & Francis Group, 2014).
- [2] A. Verkhovsky, T. Svitkina, and G. Borisy, *Curr. Biol.* **9**, 11 (1999).
- [3] K. Anderson, Y.-L. Wang, and J. Small, *J. Cell Biol.* **134**, 1209 (1996).
- [4] F. Heinemann, H. Doschke, and M. Radmacher, *Biophys. J.* **100**, 1420 (2011).
- [5] C. H. Schreiber, M. Stewart, and T. Duke, *Proc. Natl Acad. Sci.* **107**, 9141 (2010).
- [6] P. Recho and L. Truskinovsky, *Phys. Rev. E* **87**, 022720 (2013).
- [7] P. Friedl and D. Gilmour, *Nat. Rev. Mol. Cell Biol.* **10**, 445 (2009).
- [8] V. Hakim and P. Silberzan, *Rep. Prog. Phys.* (2017).
- [9] B. A. Camley and W.-J. Rappel, *J. Phys. D: Appl. Phys.* **50**, 113002 (2017).
- [10] X. Trepát and J. Fredberg, *Trends Cell Biol.* **21**, 638 (2011).
- [11] N. Gov, *Nature Mater.* **10**, 412 (2011).
- [12] X. Trepát, M. Wasserman, T. Angelini, E. Millet, D. Weitz, J. Butler, and J. Fredberg, *Nature Phys.* **5**, 426 (2009).
- [13] N. Gov, *HFSP J.* **3**, 223 (2009).
- [14] A. Kabla, *J. R. Soc. Interface* **9**, 3268 (2012).
- [15] D. Tambe, C. Corey Hardin, T. Angelini, K. Rajendran, C. Park, X. Serra-Picamal, E. Zhou, M. Zaman, J. Butler, D. Weitz, J. Fredberg, and X. Trepát, *Nature Mater.* **10**, 469 (2011).
- [16] M. Deforet, V. Hakim, H. Yevick, G. Duclos, and P. Silberzan, *Nat. Commun.* **5** (2014).
- [17] S. Garcia, E. Hannezo, J. Elgeti, J.-F. Joanny, P. Silberzan, and N. S. Gov, *Proc. Natl Acad. Sci.* **112**, 15314 (2015).
- [18] B. Stramer and R. Mayor, *Nat. Rev. Mol. Cell Biol.* (2016).
- [19] N. Gjorevski, E. Boghaert, and C. M. Nelson, *Cancer Microenviron.* **5**, 29 (2012).
- [20] H. Zhang and K.-K. Liu, *J. R. Soc. Interface* **5**, 671 (2008).
- [21] D. R. Gossett, T. Henry, S. A. Lee, Y. Ying, A. G. Lindgren, O. O. Yang, J. Rao, A. T. Clark, and D. Di Carlo, *Proc. Natl Acad. Sci.* **109**, 7630 (2012).
- [22] T. Watanabe-Nakayama, S.-i. Machida, I. Harada, H. Sekiguchi, R. Afrin, and A. Ikai, *Biophys. J.* **100**, 564 (2011).
- [23] A. Sutton, T. Shirman, J. V. Timonen, G. T. England, P. Kim, M. Kolle, T. Ferrante, L. D. Zarzar, E. Strong, and J. Aizenberg, *Nat. Commun.* **8** (2017).
- [24] J. Lee, A. Ishihara, G. Oxford, B. Johnson, and K. Jacobson, *Nature* **400**, 382 (1999).
- [25] V. Vogel and M. Sheetz, *Nat. Rev. Mol. Cell Biol.* **7**, 265 (2006).
- [26] M. Ao, B. M. Brewer, L. Yang, O. E. F. Coronel, S. W. Hayward, D. J. Webb, and D. Li, *Sci. Rep.* **5** (2015).
- [27] S. Gudipaty, J. Lindblom, P. Loftus, M. Redd, K. Edes, C. Davey, V. Krishnegowda, J. Rosenblatt, *et al.*, *Nature*

- 543**, 118 (2017).
- [28] J. Tao and S. X. Sun, *Biophys. J.* **109**, 1541 (2015).
- [29] A. Taloni, E. Kardash, O. U. Salman, L. Truskinovsky, S. Zapperi, and C. A. La Porta, *Phys. Rev. Lett.* **114**, 208101 (2015).
- [30] A. M. Goldyn, B. A. Rioja, J. P. Spatz, C. Ballestrem, and R. Kemkemer, *J. Cell Sci.* **122**, 3644 (2009).
- [31] K. Franze, J. Gerdemann, M. Weick, T. Betz, S. Pawlizak, M. Lakadamyali, J. Bayer, K. Rillich, M. Gögler, Y.-B. Lu, *et al.*, *Biophys. J.* **97**, 1883 (2009).
- [32] T. Morita, T. Mayanagi, and K. Sobue, *J. Cell Biol.* **179**, 1027 (2007).
- [33] A. D. Doyle, F. W. Wang, K. Matsumoto, and K. M. Yamada, *J. Cell Biol.* **184**, 481 (2009).
- [34] P. Maiuri, E. Terriac, P. Paul-Gilloteaux, T. Vignaud, K. McNally, J. Onuffer, K. Thorn, P. A. Nguyen, N. Georgoulia, D. Soong, *et al.*, *Curr. Biol.* **22**, R673 (2012).
- [35] F. Jülicher, K. Kruse, J. Prost, and J.-F. Joanny, *Phys. Rep.* **449**, 3 (2007).
- [36] B. Rubinstein, M. F. Fournier, K. Jacobson, A. B. Verkhovskiy, and A. Mogilner, *Biophys. J.* **97**, 1853 (2009).
- [37] A. Mogilner, *J. Math. Biol.* **58**, 105 (2009).
- [38] D. Shao, W.-J. Rappel, and H. Levine, *Phys. Rev. Lett.* **105**, 108104 (2010).
- [39] K. Doubrovinski and K. Kruse, *Phys. Rev. Lett.* **107**, 258103 (2011).
- [40] F. Ziebert, S. Swaminathan, and I. S. Aranson, *J. R. Soc. Interface*, rsif20110433 (2011).
- [41] P. Recho, T. Putelat, and L. Truskinovsky, *Phys. Rev. Lett.* **111**, 108102 (2013).
- [42] L. Giomi and A. DeSimone, *Phys. Rev. Lett.* **112**, 147802 (2014).
- [43] E. Tjhung, A. Tiribocchi, D. Marenduzzo, and M. Cates, *Nat. Commun.* **6** (2015).
- [44] S. Banerjee and M. Marchetti, *EPL (Europhysics Letters)* **96**, 28003 (2011).
- [45] M. Le Berre, Y.-J. Liu, J. Hu, P. Maiuri, O. Bénichou, R. Voituriez, Y. Chen, and M. Piel, *Phys. Rev. Lett.* **111**, 198101 (2013).
- [46] J. Comelles, D. Caballero, R. Voituriez, V. Hortigüela, V. Wollrab, A. L. Godeau, J. Samitier, E. Martínez, and D. Riveline, *Biophys. J.* **107**, 1513 (2014).
- [47] H. V. Prentice-Mott, Y. Meroz, A. Carlson, M. A. Levine, M. W. Davidson, D. Irimia, G. T. Charras, L. Mahadevan, and J. V. Shah, *Proc. Natl Acad. Sci.* **113**, 1267 (2016).
- [48] E. L. Barnhart, G. M. Allen, F. Jülicher, and J. A. Theriot, *Biophys. J.* **98**, 933 (2010).
- [49] C.-P. Heisenberg and Y. Bellaïche, *Cell* **153**, 948 (2013).
- [50] P. Recho, T. Putelat, and L. Truskinovsky, *J. Mech. Phys. Solids* **84**, 469 (2015).
- [51] P. Recho, T. Putelat, and L. Truskinovsky, *In Preparation* (2017).
- [52] P. Recho, A. Jerusalem, and A. Goriely, *Phys. Rev. E* **93**, 032410 (2016).
- [53] J. Ranft, M. Basan, J. Elgeti, J.-F. Joanny, J. Prost, and F. Jülicher, *Proc. Natl Acad. Sci.* **107**, 20863 (2010).
- [54] D. Ambrosi and A. Zanzottera, *Physica D* **330**, 58 (2016).
- [55] K. Kinneret, *Eur. Biophys. J* **40**, 1013 (2011).
- [56] A. Diz-Muñoz, D. A. Fletcher, and O. D. Weiner, *Trends Cell Biol.* **23**, 47 (2013).
- [57] X. Du, K. Doubrovinski, and M. Osterfield, *Biophys. J.* **102**, 1738 (2012).
- [58] A. J. Loosley and J. X. Tang, *Phys. Rev. E* **86** (2012), 10.1103/PhysRevE.86.031908.
- [59] J. Löber, F. Ziebert, and I. S. Aranson, *Sci. Rep.* **5** (2015).
- [60] E. L. Barnhart, K.-C. Lee, K. Keren, A. Mogilner, and J. A. Theriot, *PLoS Biol.* **9**, e1001059 (2011).
- [61] S.-Z. Lin, B. Li, G. Lan, and X.-Q. Feng, *Proc. Natl Acad. Sci.* **114**, 8157 (2017).
- [62] N. Noll, M. Mani, I. Heemskerk, S. J. Streichan, and B. I. Shraiman, *Nat. Phys.* (2017).
- [63] H. Turlier, B. Audoly, J. Prost, and J.-F. Joanny, *Biophys. J.* **106**, 114 (2014).
- [64] E. J. Doedel, H. B. Keller, and J. P. Kernevez, *Int. J. Bifurcation and Chaos* **1**, 493 (1991), AUTO 07P available via Internet from <http://indy.cs.concordia.ca/auto/>.
- [65] C. Guillot and T. Lecuit, *Science* **340**, 1185 (2013).
- [66] A. R. Harris, A. Daeden, and G. T. Charras, *J. Cell Sci.* **127**, 2507 (2014).
- [67] T. Wyatt, B. Baum, and G. Charras, *Curr. Opin. Cell Biol.* **38**, 68 (2016).
- [68] E. Marinari, A. Mehonic, S. Curran, J. Gale, T. Duke, and B. Baum, *Nature* **484**, 542 (2012).
- [69] G. T. Eisenhoffer, P. D. Loftus, M. Yoshigi, H. Otsuna, C.-B. Chien, P. A. Morcos, and J. Rosenblatt, *Nature* **484**, 546 (2012).
- [70] D. Tambe, C. Hardin, T. Angelini, K. Rajendran, C. Park, X. Serra-Picamal, E. Zhou, M. Zaman, J. Butler, D. Weitz, *et al.*, *Nature Mater.* **10**, 469 (2011).
- [71] G. F. Weber, M. A. Bjerke, and D. W. DeSimone, *Dev. Cell* **22**, 104 (2012).
- [72] S. R. K. Vedula, A. Ravasio, C. T. Lim, and B. Ladoux, *Physiology* **28**, 370 (2013).
- [73] R. Vincent, E. Bazellères, C. Pérez-González, M. Uroz, X. Serra-Picamal, and X. Trepat, *Phys. Rev. Lett.* **115**, 248103 (2015).
- [74] C. Blanch-Mercader, R. Vincent, E. Bazellères, X. Serra-Picamal, X. Trepat, and J. Casademunt, *Soft Matter* **13**, 1235 (2017).
- [75] S. Toume, A. Gefen, and D. Weihs, *Int. Wound J.* **14**, 698 (2017).
- [76] J.-P. Thiery, H. Acloque, R. Y. Huang, and M. A. Nieto, *Cell* **139**, 871 (2009).
- [77] E. Hannezo, J. Prost, and J.-F. Joanny, *Proc. Natl Acad. Sci.* **111**, 27 (2014).
- [78] P.-G. de Gennes, “Scaling concepts in polymer physics,” (Cornell University Press, 1979) Chap. 9.
- [79] H. Jiang and S. X. Sun, *Biophys. J.* **105**, 609 (2013).
- [80] T. Hui, Z. Zhou, J. Qian, Y. Lin, A. Ngan, and H. Gao, *Phys. Rev. Lett.* **113**, 118101 (2014).
- [81] D. J. McGrail, K. M. McAndrews, C. P. Brandenburg, N. Ravikumar, Q. M. N. Kieu, and M. R. Dawson, *Biophys. J.* **109**, 1334 (2015).