



**HAL**  
open science

# The Toxin–Antidote Model of Cytoplasmic Incompatibility: Genetics and Evolutionary Implications

John Beckmann, Manon Bonneau, Hongli Chen, Mark Hochstrasser, Denis Poinso, Mylene Weill, Mathieu Sicard, Sylvain Charlat

► **To cite this version:**

John Beckmann, Manon Bonneau, Hongli Chen, Mark Hochstrasser, Denis Poinso, et al.. The Toxin–Antidote Model of Cytoplasmic Incompatibility: Genetics and Evolutionary Implications. *Trends in Genetics*, 2019, 35 (3), pp.175-185. 10.1016/j.tig.2018.12.004 . hal-02009677

**HAL Id: hal-02009677**

**<https://hal.science/hal-02009677v1>**

Submitted on 28 Feb 2019

**HAL** is a multi-disciplinary open access archive for the deposit and dissemination of scientific research documents, whether they are published or not. The documents may come from teaching and research institutions in France or abroad, or from public or private research centers.

L'archive ouverte pluridisciplinaire **HAL**, est destinée au dépôt et à la diffusion de documents scientifiques de niveau recherche, publiés ou non, émanant des établissements d'enseignement et de recherche français ou étrangers, des laboratoires publics ou privés.

# The toxin-antidote model of cytoplasmic incompatibility: genetics and evolutionary implications

John F. Beckmann<sup>1\*</sup>, Manon Bonneau<sup>2\*</sup>, Hongli Chen<sup>3</sup>, Mark Hochstrasser<sup>3</sup>, Denis Poinso<sup>4</sup>,

Hervé Merçot<sup>5</sup>, Mylène Weill<sup>2</sup>, Mathieu Sicard<sup>2\*\*</sup> and Sylvain Charlat<sup>6\*\*</sup>

5

\*Equal contribution.

\*\* For correspondence: [mathieu.sicard@umontpellier.fr](mailto:mathieu.sicard@umontpellier.fr) / [sylvain.charlat@univ-lyon1.fr](mailto:sylvain.charlat@univ-lyon1.fr)

1. Auburn University, Department of Entomology and Plant Pathology, 301 Funchess Hall,  
Auburn, AL 36849, USA

2. ISEM, University of Montpellier, CNRS, EPHE, IRD, Montpellier, France.

3. Yale University, Department of Molecular Biophysics & Biochemistry, 266 Whitney  
Avenue, New Haven, Connecticut/Province: CT 06511, USA

4. Université Rennes 1, UMR IGEP, Campus Beaulieu, bat 25-4, 35042 Rennes, France

5. Sorbonne Université, UPMC Univ. Paris 06, CNRS, Institut de Biologie Paris Seine,  
Evolution Paris Seine (IBPS, EPS), 7-9 Quai St-Bernard, 75005 Paris, France

6. CNRS - University of Lyon, Laboratoire de Biométrie & Biologie Evolutive, 16, rue Raphael  
Dubois, 69622 Villeurbanne, France

**Keywords** : *Wolbachia*; Cytoplasmic Incompatibility; Deubiquitylase; Nuclease; Toxin-antidote  
systems; Selfish genetic elements

## Abstract

1  
2  
3  
4  
5  
6 *Wolbachia* bacteria inhabit the cells of about half of all arthropod species, an unparalleled  
7  
8 25 success stemming in large part from selfish invasive strategies. Cytoplasmic incompatibility  
9  
10 (CI), whereby the symbiont makes itself essential to embryo viability, is the most common of  
11  
12 these and constitutes a promising weapon against vector-borne diseases. After decades of  
13  
14 theoretical and experimental struggle, major recent advances have been made toward a  
15  
16 molecular understanding of this phenomenon. As pieces of the puzzle come together, from  
17  
18 yeast and *Drosophila* fly transgenesis to CI diversity patterns in natural mosquito populations,  
19  
20 30 it becomes clearer than ever that the CI induction and rescue stem from a toxin-antidote  
21  
22 system. Further, the tight association of the CI genes with prophages provide clues to the  
23  
24 possible evolutionary origin of this phenomenon and the levels of selection at play.  
25  
26  
27  
28  
29  
30  
31  
32  
33  
34 35  
35  
36  
37  
38  
39  
40  
41  
42  
43  
44  
45  
46  
47  
48  
49  
50  
51  
52  
53  
54  
55  
56  
57  
58  
59  
60  
61  
62  
63  
64  
65

1 Every living organism is a chimera of different evolutionary lineages living in more or less tight  
2 association. Arthropods are emblematic of that rule and often carry bacteria within their own  
3  
4 cells, transmitted from mothers to offspring with the egg cytoplasm. These may offer  
5  
6 benefits, such as vital nutrients to hosts feeding exclusively on sap or blood [1,2], and thus  
7  
8  
9  
10 40 become essential parts of a new whole, but also often colonize host populations through  
11  
12 selfish strategies, maximizing their own fitness regardless of possible detrimental effects to  
13  
14 hosts [3,4]. Cytoplasmic incompatibility (CI, Figure 1, box 1) is one such strategy, which has  
15  
16 likely contributed in large part to the radiative success of *Wolbachia* bacteria, now present in  
17  
18 about half of all arthropod species [5–7].  
19  
20  
21  
22

## 23 45 24 25 26 27 CI genetics 28 29

30 While *Wolbachia* and CI were both discovered a long time ago in *Culex pipiens* mosquitoes [8–  
31  
32 11], the causal link between the two was only made decades later [12,13]. By that time, early  
33  
34 models had clarified the invasion dynamics of CI [14], that were later extended [15] and  
35  
36  
37 50 calibrated with empirical data [16,17], but only in the 1990s was a formal mechanistic model  
38  
39 proposed [18–20]. The fact that sperm from *Wolbachia*-carrying males kills uninfected but not  
40  
41 infected embryos upon fertilization is compatible with a toxin-antidote model (hereafter TA  
42  
43 model) (Figure 2, Key Figure). The toxin factor, deposited in maturing sperm, would kill the  
44  
45 embryos unless they are rescued by the antidote. Although concurrent explanations were also  
46  
47  
48  
49  
50 55 proposed [21,22], the discovery of *Wolbachia* strains capable of rescuing CI without inducing  
51  
52 it further supported the notion that this phenomenon should involve two distinct factors  
53  
54 [23,24]. The observations of independent effects of distinct *Wolbachia* strains, either in the  
55  
56 context of multiple infections or mutual incompatibility between different *Wolbachia* strains,  
57  
58  
59  
60  
61  
62  
63  
64  
65

1 further suggested the toxin and antidote should interact specifically, in a lock-and-key manner

2  
3 60 [25]. This framework generated a set of testable predictions that fueled the experimental  
4  
5 quest to identify the CI genes, which was recently achieved [26–30].  
6

7  
8 The first evidence pointing to the two genes later established as genuine CI factors  
9  
10 came from a sperm proteomic study based on the rationale that the hypothetical CI toxin  
11  
12 should be present in infected males' mature sperm, even though the bacterium itself is not  
13  
14 [26]. Inspired by earlier proteomic analyses of *Drosophila* sperm [31,32], this approach finally  
15 65 pinpointed the candidate CI genes in the mosquito *Culex pipiens*, where the high penetrance  
16  
17 of CI associated with the *wPip Wolbachia* strain predicted a toxin protein detectable by mass  
18  
19 spectrometry. Here serendipity also played an essential role: the first CI protein identified in  
20  
21 sperm in this study was later revealed not as the toxin gene product, as predicted, but as the  
22  
23 antidote, the presence of which was not expected under the most parsimonious CI model  
24  
25 [25]. Nevertheless, its synteny and co-transcription with another *Wolbachia* gene, later  
26  
27 revealed as the CI toxin, was noted, as was the similarity of this locus with typical toxin-  
28 70 antidote systems, usually composed of two genes, the first of which, the antidote, is  
29  
30 expressed at higher levels [33]. Proximity of these putative CI genes to prophages in the *wPip*  
31  
32 genome was also pointed out at that time [26].  
33  
34  
35  
36  
37  
38  
39  
40  
41 75  
42  
43

44 The next major steps toward the demonstration that these genes and their homologs  
45  
46 in *Drosophila* are responsible for the induction and rescue of CI came from a combination of  
47  
48 approaches and model systems [27,28]. In line with the TA model, biochemical analysis and  
49  
50 transgenic expression of the putative *wPip* CI genes in yeast revealed that they encode a toxic  
51  
52 deubiquitylase (DUB) and an inhibitor of this toxicity (DUBs are enzymes that specifically  
53  
54 80 remove ubiquitin from ubiquitin-modified proteins). When transgenically expressed in  
55  
56 uninfected *Drosophila* males crossed with uninfected females, these factors recapitulate CI  
57  
58  
59  
60  
61  
62  
63  
64  
65

1 induction during the first embryonic mitosis [27]. Importantly, the two proteins were also  
2 found to bind tightly to one another in a cognate-specific manner [27] consistent with prior  
3  
4  
5 85 lock-and-key predictions [25]. At the same time, independent experiments involving the  
6  
7 homologs of these genes from the *wMel Wolbachia* strain, naturally infecting *D.*  
8  
9  
10 *melanogaster*, confirmed and complemented these results: their dual expression in  
11  
12 uninfected *Drosophila* males induces a CI-like phenotype that, most importantly, is rescued by  
13  
14 the presence of *wMel* bacteria in females [28].  
15  
16

17  
18 90 Before discussing the many questions raised by these results, a brief note is needed to  
19  
20 avoid ambiguities stemming from different CI gene nomenclatures co-existing in the literature  
21  
22 [27,28] (Figure 3). One proposal is that the operon inducing a CI-like phenotype when  
23  
24 expressed in *Drosophila* should be called “*cid*”, for “CI-inducing DUB” [27]. This function-  
25  
26 based name was chosen to explicitly distinguish *cid* from *cin*, short for “CI-inducing nuclease”,  
27  
28 a paralogous operon in the *wPip* genome, encoding a nuclease and showing a similar TA-like  
29  
30  
31 95 behavior in yeast, as well as polycistronic transcription [26,27]. Within each operon, the first  
32  
33 gene, encoding the putative antidote, is labeled A (e.g., *cidA* or *cinA*) and the second,  
34  
35 encoding the putative toxin, is labeled B. A contrasting nomenclature proposes that all the  
36  
37 different CI-associated genes should be more neutrally noted as “CI factors” (*cif*), and that the  
38  
39 different paralogs should be distinguished on the basis of phylogeny [28,34]. The “operon”  
40  
41  
42 100 designation is also questioned by these authors, primarily because the two transcripts can be  
43  
44 measured at different levels, which could be indicative of different promoters [34]. Yet, no  
45  
46 such distinct promoters have been identified and different expression levels of the two genes  
47  
48 are not uncommon within bacterial operons [35]. In our view, the “operon” designation is  
49  
50  
51  
52  
53  
54  
55  
56 105 thus appropriate in the present case. Regardless of this semantic debate, the two adjacent  
57  
58 genes within each potential CI locus are labeled A and B in both nomenclature proposals.  
59  
60  
61  
62  
63  
64  
65

1 Thus, *cidA* and *cidB* are synonymous with *cifA* and *cifB* (clade 1), respectively, and these  
2 constitute the major CI genes identified to date, recapitulating the phenotype in *Drosophila*.  
3  
4 We see pros and cons in both nomenclatures and suggest they should be merged into a single  
5  
6  
7 110 system to avoid further confusion. The “*cif*” term (for CI factor) seems appropriate to  
8  
9 designate CI genes in general and we will use it in that sense. To denote their different  
10  
11 functional categories and evolutionary histories, we will distinguish *cid* (the DUB operon),  
12  
13 from *cin* (the nuclease operon) and use this dichotomy to designate specific *cif* genes from  
14  
15 any *Wolbachia* strain. Some operons have been predicted to carry both functions; we suggest  
16  
17  
18  
19  
20 115 these should be called “*cnd*” (Figure 3) [27,36]. When necessary, we will append the  
21  
22 *Wolbachia* strain name as a superscript. In our opinion, this system merges positives of both  
23  
24 previously proposed nomenclatures and fairly acknowledges the concomitant discovery of  
25  
26  
27  
28 these gene pairs in two separate studies [27,28].  
29

30  
31 Following publication of the first two conclusive reports on *cif* genes, two major  
32  
33 120 unsettled points remained [28,34]. First, the antidote activity of the CidA protein, although  
34  
35 demonstrated for both CidA<sup>wPip</sup> and CinA<sup>wPip</sup> in yeast, was not established in *Drosophila*. A  
36  
37 more recent report has now clarified this point: if expressed in sufficient amount during  
38  
39 oogenesis, CidA<sup>wMel</sup> was found to restore the viability of uninfected embryos fertilized by  
40  
41 wMel-carrying *Drosophila* males [29]. A second major question, still not fully settled as of this  
42  
43  
44  
45  
46 125 writing, is whether CidB can act alone as the CI toxin or needs some interaction with CidA to  
47  
48 express toxicity. Transgenic expression in yeast indicates that the DUB activity of CidB<sup>wPip</sup> has  
49  
50 in itself a toxic effect, which is inhibited by co-expression of CidA<sup>wPip</sup>. However, *Drosophila*  
51  
52 lines expressing CidB<sup>wPip</sup> alone were never obtained, making it impossible to directly assess its  
53  
54  
55  
56  
57 effect in this context [27]. A simple hypothesis, compatible with the idea that CidB alone is  
58  
59 130 indeed the CI toxin, is that CidB<sup>wPip</sup> can exert deleterious effects outside of the first embryonic  
60  
61  
62  
63  
64  
65

1  
2  
3  
4  
5  
6  
7  
8  
9  
10 135  
11  
12  
13  
14  
15  
16  
17  
18  
19  
20  
21  
22  
23  
24  
25  
26  
27  
28  
29  
30  
31  
32  
33  
34  
35  
36 145  
37  
38  
39  
40  
41  
42  
43  
44  
45  
46  
47  
48  
49 150  
50  
51  
52  
53  
54  
55  
56  
57  
58  
59  
60  
61  
62  
63  
64  
65

mitosis, where CI is usually first realized, and therefore requires co-expression of CidA, the  
antidote, in any tissue where CidB is present, and at sufficiently high dosage. Such a model  
would also help explain the paradoxical observation that first turned the spotlight toward the  
CI operon: the high dosage of CidA protein in mature sperm [26]. If this interpretation is  
correct, CI would result from removal or inactivation of the paternal CidA protein just before,  
or just after, fertilization.

At first sight, experiments involving transgenic expression of the *cid*<sup>wMel</sup> genes in  
*Drosophila* argue against a toxic effect of CidB<sup>wMel</sup> alone: lines expressing this protein were  
viable and the CI phenotype was recapitulated only by males expressing both CidB<sup>wMel</sup> and  
CidA<sup>wMel</sup> [28]. This result has been considered by some authors as arguing for a “two-by-one”  
model, in which CI induction would somehow rely on both CidA and CidB proteins, while  
rescue would rely on CidA only [29]. However, differences in the toxicity of CidB<sup>wMel</sup> and  
CidB<sup>wPip</sup> may reconcile these experimental results with a simple TA model. Although the wMel  
*Wolbachia* strain may induce very high CI in a permissive host background (e.g., upon artificial  
transfer into *Drosophila simulans*) [37], it is well established that it has a low penetrance in its  
natural host [38], possibly as a result of past coevolution [39]. A low toxicity of CidB<sup>wMel</sup> in *D.*  
*melanogaster* would explain why flies expressing this protein alone can survive. But why is CI  
not expressed in such transgenic lines? One possibility is that CidB<sup>wMel</sup> is toxic enough to kill  
those maturing sperm cells where it is most highly expressed. It would follow that the  
surviving mature sperm would be precisely those where CidB<sup>wMel</sup> is not sufficiently expressed  
to induce either sperm or embryonic death. This model could be tested by assessing if *D.*  
*melanogaster* males expressing CidB<sup>wMel</sup> alone show a reduced sperm production.

Notably, the hypothesis that *cidB* may be deleterious in various cell types and  
developmental stages does not imply that the *Wolbachia* themselves express this gene in



155 many tissues of their native hosts. In other words, the pattern of expression of *cidB* in  
1  
2 transgenic insects says nothing about its natural expression in *Wolbachia*-infected hosts. The  
3  
4 fact that viable uninfected offspring can often be obtained through imperfect *Wolbachia*  
5  
6 transmission or antibiotic curing actually suggests that in a natural context, the CI toxin is not  
7  
8 expressed in all tissues. At present, one cannot exclude a “two-by-one” model, where both  
9  
10  
11  
12  
13 160 CidA and CidB proteins would be required to produce a toxic effect, but this would imply  
14  
15 drastically different effects of CidA in sperm (where it would contribute to toxicity) and in the  
16  
17 eggs (where it is known to act as an antidote). In our view, and as discussed above, a model  
18  
19 where CidB and CidA act respectively as toxin and antidote is more likely correct and can be  
20  
21 reconciled with the data in hand. As we shall now discuss, comparative genomics of *cif* genes,  
22  
23  
24  
25 165 both at micro and macro-evolutionary scales, further support this conclusion [30,34].  
26  
27  
28  
29  
30  
31

## 32 CI evolution

33  
34  
35 Although *C. pipiens* provided the original CI model system, the simple pattern presented in  
36  
37 Figure 1, which best illustrates the invasiveness of CI, is never seen in natural populations of  
38  
39  
40 170 this species. Wherever they come from, *C. pipiens* mosquitoes are always infected by  
41  
42 *Wolbachia* (while uninfected specimens can occasionally be found in a cryptic species  
43  
44 [40,41]). As a consequence, infected males never encounter uninfected females in nature and  
45  
46  
47 CI is only expressed in its most elaborate form: infected males and females can only produce  
48  
49 offspring if they carry “compatible infections.” Indeed, *C. pipiens* has long been known for  
50  
51  
52  
53 175 harboring a large diversity of cross-incompatible mosquito lines [11], which are now known to  
54  
55 carry closely related yet incompatible *Wolbachia* strains [42,43]. These are said to be  
56  
57  
58 “bidirectionally incompatible” if both directions of crosses result in embryo death. By  
59  
60  
61  
62  
63  
64  
65

1 contrast, crosses between “unidirectionally incompatible” strains produce effective CI in only  
2 one direction, producing a pattern similar to that illustrated in Figure 1, although all  
3  
4  
5 180 individuals are infected.

6  
7 How can this be? That different *Wolbachia* strains may harbor different compatibility  
8  
9  
10 types is easily explained in the framework of the TA model, especially in its lock-and-key  
11  
12 formulation: incompatible *Wolbachia* strains will carry incompatible locks and keys. In this  
13  
14 regard, *C. pipiens* is not unique: *Drosophila simulans*, among many other species, also carries  
15  
16 several distinct *Wolbachia* strains, each with its own compatibility type [38]. In this fruit fly,  
17  
18 185 compatibility relationships between lines can, at least in theory, be parsimoniously explained  
19  
20 by variations at a single TA locus [44] (although some *D. simulans* *Wolbachia* genomes appear  
21  
22 to include multiple *cif* paralogs [45]). In contrast, incompatibility patterns are so complex in *C.*  
23  
24 *pipiens* that they cannot be explained with a single TA pair per *Wolbachia* genome [42,46].  
25  
26  
27 Specifically, compatibility relationships are not all transitive in this system: two strains may be  
28  
29 190 mutually compatible although they harbor distinct compatibility patterns with other strains  
30  
31  
32 [44]. Focusing on compatibility relationships among 19 wild-type *C. pipiens* lines [43],  
33  
34 theoretical analyses grounded in the TA framework concluded that at least five TA pairs may  
35  
36 co-occur in one *wPip* genome [44]. Now that the CI genes have been identified, the time has  
37  
38  
39  
40  
41  
42  
43  
44 195 come to test such theoretical predictions.

45  
46 Although all infections from *C. pipiens* represent a monophyletic group of close  
47  
48 *Wolbachia* relatives, fine-scale phylogenetic markers allow one to distinguish five clades  
49  
50  
51 within which crosses are most often compatible and between which they are most often  
52  
53 incompatible [42,47]. Based on this phylogenetic and phenotypic diversity, Bonneau et al. [30]  
54  
55  
56 200 selected multiple mosquito lines collected worldwide to assess molecular variation of the *cif*  
57  
58  
59 genes and test their explanatory power with regard to compatibility patterns. Under the  
60  
61  
62  
63  
64  
65

1 hypothesis that these genes underlie CI diversity in *Culex*, they should be present in several  
2 distinct copies within each *Wolbachia* genome, and strains harboring different CI patterns  
3 should carry different *cif* repertoires. The *cid* data fully matched these predictions: in the  
4  
5  
6  
7 205 *Culex* populations studied, *cidA* and *cidB* show tremendous variation in both sequence and  
8  
9 copy number, resulting in large part from duplication and recombination events, possibly  
10 mediated by the prophage region where they occur. By contrast, the *cinA* and *cinB* genes  
11  
12  
13 were found to be monomorphic in the *wPip* strains analyzed, indicating that incompatibilities  
14  
15  
16  
17 in *Culex* are the result of *cid* but not *cin* variations.  
18

19  
20 210 While mutually incompatible strains should harbor different *cid* repertoires, as was  
21  
22 indeed observed, the TA model does not predict that mutually compatible strains should carry  
23  
24 exactly the same *cid* alleles. First, mutations may occur outside of the toxin / antidote  
25  
26 interaction sites, which should not affect compatibility patterns and would thus be neutral as  
27  
28 far as CI is concerned. Second, the TA model does not demand a strict one-to-one specificity  
29  
30  
31  
32 215 of toxin-antidote interactions: some antidotes may inhibit more than one toxin. Both of these  
33  
34 explanations may contribute to explain why a number of mutually compatible strains harbor  
35  
36 different *cid* repertoires. Nevertheless, these strains happen to always share a common *cidA*  
37  
38 variant that may represent a super-antidote, matching several distinct toxins [30]. Expressing  
39  
40 these different Cid variants in an experimentally flexible *in vivo* system such as yeast, together  
41  
42  
43  
44  
45  
46 220 with biochemical studies, should clarify this issue.  
47

48  
49 What does the *cid* polymorphism tell us about the evolutionary process of CI  
50  
51 diversification? In other words, can *cid* molecular variations reveal how bidirectionally  
52  
53 incompatible *Wolbachia* evolved? Past theoretical work has highlighted how much the  
54  
55 genetic architecture of CI should affect this process [39,44,48,49]. The experimental  
56  
57  
58  
59 225 confirmation that CI genes can occur in multiple copies [30] greatly simplifies the problem  
60  
61  
62  
63  
64  
65

1 from a theoretical standpoint: following duplication of a TA pair, redundancy between loci  
2 may allow new antidotes to emerge without compromising self-compatibility. This first step  
3  
4 could be followed by the occurrence of matching mutations of the toxin, producing two  
5  
6 distinct CI operons in a genome [44]. The possibility that some antidotes may inhibit more  
7  
8  
9  
10 230 than one toxin opens yet other possible scenario, where either side may diversify first if the  
11  
12 process goes through a broad spectrum phase before further restriction of specificity, as has  
13  
14  
15 been suggested in other TA systems [50].  
16

17  
18 The absence of polymorphism in the *cin* operon (the nuclease paralog of *cid*) rules out  
19  
20 this locus as a driver of CI diversity in *Culex*. However, could this operon or other *cid* paralogs  
21  
22  
23 235 operate in other species? Comparative genomics among *Wolbachia* lineages indicate that  
24  
25 some CI-inducing strains do not contain *cid* genes but only the *cin* paralogs [28,34]. Moreover,  
26  
27 neither *cid* nor *cin*-related paralogs were found in a close relative of *wMel* that does not  
28  
29 induce CI [34,51], or in nematode *Wolbachia* strains that have become obligate mutualists  
30  
31  
32 [26,34]. These results support the involvement of both *cid* and *cin* operons in CI induction by  
33  
34  
35  
36 240 *Wolbachia*, with evidence still emerging. Further, these two loci seem sufficient so far to  
37  
38 explain all CI cases associated with *Wolbachia*.  
39  
40

41  
42 This conclusion does not hold when symbiont lineages distant from *Wolbachia* are  
43  
44 considered. Notably, *Cardinium* bacteria can induce CI but do not carry identifiable *cid* or *cin*  
45  
46 genes, suggesting convergent evolution of CI [34,52]. However, a recent study suggested that  
47  
48  
49 245 TA-like systems showing a putative DUB activity can be found in a diverse array of  
50  
51 endosymbionts, not only in *Cardinium* (albeit in a lineage where CI itself was not  
52  
53 demonstrated), but also in other intracellular symbionts, such as *Rickettsia* and *Spiroplasma*,  
54  
55 that are also known as manipulators of host reproduction [36]. Also notable is the presence of  
56  
57  
58  
59 *cin* genes in non-CI but parthenogenesis-inducing *Wolbachia* strains [34]. Although these  
60  
61  
62  
63  
64  
65

250 results do not provide direct evidence that distant *cif* homologs are involved in CI or other  
1  
2 forms of reproductive manipulation, they make this hypothesis worth exploring. Finally, the  
3  
4 discovery of CI associated with a non-*Wolbachia* Alphaproteobacterium [53] provides another  
5  
6 system where *cif* gene relatives should be sought.  
7  
8  
9

## 12 *Cui bono?* Levels of selection and the origin of CI

13  
14  
15 From Cicero to the detective Columbo, asking “*Cui bono?*” (Who benefits?) has been a useful  
16  
17 avenue of criminal and sociological investigation. This question is also relevant in a Darwinian  
18  
19 framework and has prompted novel explanations of evolutionary oddities such as altruism  
20  
21 and selfish genetic elements [54–56]. Applying this question to CI led early theorists to  
22  
23 highlight the benefit it provides to *Wolbachia* itself, rather than its host, suggesting that the  
24  
25  
26  
27  
28  
29  
30  
31  
32  
33  
34  
35  
36  
37  
38  
39  
40  
41  
42  
43  
44  
45  
46  
47  
48  
49  
50  
51  
52  
53  
54  
55  
56  
57  
58  
59  
60  
61  
62  
63  
64  
65

260 highlight the benefit it provides to *Wolbachia* itself, rather than its host, suggesting that the  
bacterium represents the right level of selection to understand how this phenomenon came  
to be [19]. Remarkably, the same early study was visionary in suggesting that the CI genes  
may be associated with mobile genetic elements: the discovery that they sit in a prophage  
supported this hypothesis [26–28,34,57]. In our view, this finding also makes it relevant to  
revisit the question of the adaptive significance of CI, and ask whether this phenomenon may  
have evolved in the first place for the benefit not of *Wolbachia*, but of the bacterium’s own  
intragenomic parasites.

The hypothesis that TA systems, including restriction-modification systems or  
bacteriocins, constitute fundamentally selfish genetic elements has received ample support in  
the field of microbial evolution [58–63]. In brief, the idea is that TA systems make themselves  
addictive as soon as they enter a cell: the toxin molecule is typically more stable than the  
antidote, so that removing the source of both results in cell death. Although this property is  
not necessarily invasive (an element killing a host once it is lost increases its effective

1 transmission rate but will not, by itself, increase its frequency), it can promote invasion under  
2 275 certain circumstances, especially if the TA system is part of a horizontally transmitted mobile  
3 genetic element [64].  
4  
5  
6

7 With regard to *Wolbachia*, it seems reasonable to assume that the nearly universal  
8 positioning of the CI genes within prophages [57,65] is not mere chance, but rather has some  
9 adaptive significance. So, who benefits from the CI genes, and more specifically, from their  
10 association with prophages? This particular location is not *a priori* adaptive at the *Wolbachia*  
11 level, but it may well be at the phage level: horizontally transmitted phages should more  
12 readily invade *Wolbachia* populations if they carry a TA system. The occurrence of distant *cif*  
13 relatives in several other bacterial lineages, where they sit in plasmids rather than prophages,  
14 argues against a purely viral origin of this gene family [36], and so does their relatedness to  
15 280 typical eukaryotic sequences [26,36,57]. However, the association of *cif* genes with phages in  
16 the *Wolbachia* lineage opens the possibility that they first invaded this clade as a phage  
17 adaptation, and only later became “CI genes.”  
18  
19  
20  
21  
22  
23  
24  
25  
26  
27  
28 285  
29  
30  
31  
32  
33  
34  
35

36 As previously pointed out [66], the elimination of *Wolbachia* from maturing sperm  
37 establishes conditions for the evolution of such a selfish phage TA system toward genuine CI.  
38  
39  
40  
41 290 If one simply assumes that the toxin is exported outside of the bacterium and can exert its  
42 deleterious effects on the host (eukaryotic) cell, then CI could easily arise. In particular, the  
43 paternal pronucleus, threatened by a stable toxin, would need fresh antidote from an  
44 infected egg to be able to participate to the first embryonic division. Such a situation would in  
45 turn make the bacterium invasive through CI, generating a convergence in the evolutionary  
46 interests of the phage and its bacterial host.  
47  
48  
49  
50  
51  
52  
53  
54 295  
55  
56  
57  
58  
59  
60  
61  
62  
63  
64  
65

## Concluding remarks and future perspectives

Recent research has provided a firm answer to the first of many critical questions regarding the molecular biology of CI (Outstanding Questions Box). There is indeed a general agreement that the principal *Wolbachia* CI genes have been found [26–29], and our present analysis concurs with past predictions that they encode toxins and antidotes interacting in a lock-and-key fashion [25]. Nevertheless, significant revisions of the basic TA model are needed to account for all observations. First, we suggest that CifB toxins may exert their deleterious effects not only in incompatible crosses during the first embryonic mitosis, but also in maturing sperm and other cell types, in which the presence of CifA antidotes would also be required. This hypothesis would explain why dual transgenic expression of the two genes in uninfected *Drosophila* males is required for them to survive (in the case of *cid*<sup>W<sup>Pip</sup>), or for CI to be transgenically expressed (in the case of *cid*<sup>W<sup>Mel</sup>) [27,28]. Patterns of molecular variation of the *cidA* and *cidB* genes [30] also suggest that some antidotes may match several toxin products, a conjecture that could be tested by direct assessments of CidA-B interactions in simplified *in vivo* or *in vitro* systems. Furthermore, these genetic data confirm the earlier speculation that single *Wolbachia* strains may carry multiple active CI operons, not only in *Culex* [67] but also in *Drosophila* [68].</sup></sup>

While the genetics of CI have been clarified, its molecular mechanisms remain to be worked out (Box 2). Furthermore, the exact nature of the interaction between toxin and antidote proteins remains to be determined, although there are some indications of which residues might be involved [30]. Clarification of these issues will be needed to design artificial CI systems that may be used in biological control. Comparative genomics will provide a valuable complement to experiments to understand how CI actually works, and to investigate how it evolves. At a microevolutionary scale, further exploration of the *Culex* system will

1 clarify how different *Wolbachia* strains become mutually incompatible. On a  
2  
3 macroevolutionary scale, genomic comparisons may further reveal which *cif* genes can  
4  
5 actually induce CI, and what are the commonalities and specificities between these systems.  
6

7 Building on the observation that the CI genes lie in a mobile genetic element (the WO  
8  
9 prophage), we suggested they might have originally been selected as a phage invasive  
10 325 strategy and were later domesticated by the bacterium. In line with this hypothesis, distant  
11  
12 homologues of the *cid* genes are present in other bacterial symbionts, and nearly always in  
13  
14 association with phages or plasmids [36]. Pushing the reasoning one step further, one may  
15  
16 envisage that the TA operon was initially costly for the phage, and only later became  
17  
18 domesticated as an effective invasive strategy. CI would then be a case of a parasitic operon  
19  
20 within a parasitic phage within a parasitic symbiont, each relying today on its past inner  
21  
22 enemy. The observation that some insects, and many filarial nematodes, cannot live without  
23 330 *Wolbachia* [69–71] reinforces the idea that such “evolution through addiction” constitutes a  
24  
25 never-ending process, producing the Russian dolls that all organisms seem to be.  
26  
27  
28  
29  
30  
31  
32  
33  
34  
35

## 36 335 Acknowledgments

37  
38  
39  
40  
41  
42  
43 This work benefited from funding by the United States Department of Agriculture (grant  
44  
45 USDA-1015922 to JB), the National Institutes of Health (grant GM046904 to MH) and the  
46  
47 French “Agence Nationale de la Recherche” (CIAWOL grant to MS: ANR-16-CE02-0006-01,  
48  
49 340 HORIZON grant to SC: ANR-17-CE02-0021-02).  
50  
51  
52  
53  
54  
55  
56  
57  
58  
59  
60  
61  
62  
63  
64  
65



## 345 Boxes

### 6 Box 1: *Wolbachia* and Cytoplasmic Incompatibility

9 Perhaps the most crucial aspect of *Wolbachia* biology is the fact it is transmitted from  
10 mothers to offspring through the egg cytoplasm [72] although horizontal transfer may also  
11 occur [7,45]. Vertical transmission through the female germline will select *Wolbachia* traits  
12 that increase the fitness of infected females, or more technically, the number or the fitness of  
13 their infected daughters. CI can be interpreted within such a framework: by protecting  
14 infected embryos from the lethal effect of infected males' sperm, *Wolbachia* increases the  
15 relative brood size of infected females. Infected males pay a heavy price for CI (mating with  
16 uninfected females drastically reduces their own fertility) but this is costless for *Wolbachia*  
17 because males do not transmit the symbiont to future generations. Notably, only few  
18 uninfected females are sterilized through CI when *Wolbachia* is rare in the host population, so  
19 that a low frequency infection has low chances of invasion, unless it combines CI with other  
20 traits, such as protection of the host against pathogens [73]. Such protective effects are  
21 actually observed [74] and can also block the passage of human pathogens through insect  
22 vectors [75]. The ongoing "World Mosquito Program" makes use of this property: the massive  
23 release of CI-inducing mosquitoes allows the spread of the infection, which should reduce  
24 overall viral transmission rates [76] although the implementation and evolutionary outcome  
25 of this approach remain uncertain [77,78].

365

## Box 2: CI molecular mechanisms

1  
2  
3 Whilst the CI effectors have been identified, the question of how they induce embryo death  
4  
5 or rescue remains largely unanswered, and can be divided in two: how do *cif* toxins impede  
6  
7 paternal chromosomes, and how do *cif* antidotes impede the toxins? Functional properties of  
8 370 the *cifB* genes are obviously relevant to the first question, as are characterizations of the CI  
9  
10 phenotype at the cytological level. The earliest detected abnormality in CI crosses is improper  
11  
12 deposition of maternal H3.3 histones on the paternal genome after protamine removal [79].  
13  
14 This deposition defect could be responsible for improper paternal chromosome condensation  
15  
16 in prophase [22,80–82]. How could these features be related to *cif* genes activities? While  
17  
18 bioinformatics predict a number of potential enzymatic properties for the various *cif* paralogs,  
19  
20 the DUB domain of CidB stands at the moment as the strongest CI effector candidate: active-  
21 375 site mutations in CidB eliminate CI in transgenic insects as well as toxicity in yeast models [27].  
22  
23 Furthermore, different CidB repertoires induce different levels of CI defects at the cellular  
24  
25 level [82]. Although the DUB activity may affect upstream components of the CI causal chain,  
26  
27 interference with the ubiquitylation status of key chromatin or cell cycle regulators appears as  
28  
29 an obvious hypothesis to link CidB to CI cytology.  
30  
31  
32  
33 380  
34  
35  
36  
37  
38  
39  
40

41  
42 However, the observation that some *Wolbachia* strains may lack *cid* genes but still  
43  
44 induce CI suggests the DUB function is just one tool in a larger *cif* arsenal [26,28,34,36]. CinB  
45  
46 385 appears as the most likely source of CI in this case, since active-site mutations block CinB  
47  
48 toxicity in yeast [27]. But why and how would different enzymes generate the same CI  
49  
50 phenotype? One hypothesis would be that the DUB and nuclease activities are two upstream  
51  
52 components of a common causal chain. Simply put, cutting DNA and cleaving ubiquitin may  
53  
54 constitute alternative ways to disturb paternal chromosome condensation. Definitive  
55  
56  
57  
58  
59  
60  
61  
62  
63  
64  
65

1  
2  
3  
4  
5  
6  
7  
8  
9  
10  
11  
12  
13 390 demonstrations that CinB can induce CI, as well as identification of the CidB and CinB targets  
14 will be crucial to resolving these issues.

15  
16  
17  
18  
19  
20  
21  
22  
23  
24  
25  
26 395 The fact that CI may be mediated by two distinct effectors, involving DUB or nuclease  
27 activities, is also relevant to investigate how CI antitoxins may function. CidA and CinA may  
28 inhibit DUB and nuclear activities, respectively, either through distinct pathways or  
29 alternatively, through a single mechanism, such as protein sequestration or relocalization. The  
30 latter hypothesis may explain why CidA can inhibit the toxicity of CidB without specifically  
31 reducing its DUB activity against model substrates [27]. Further characterization of the Cid  
32 and Cin protein structures and identification of the residues involved in the interaction  
33 between cognate partners of both operons appear as promising avenues of research to better  
34 understand how infected embryos get rescued from CI.  
35  
36  
37  
38  
39  
40  
41  
42  
43  
44  
45  
46  
47  
48  
49  
50  
51  
52  
53  
54  
55  
56  
57  
58  
59  
60  
61  
62  
63  
64  
65

## Figure captions

1  
2  
3  
4  
5  
6 **Figure 1.** Cytoplasmic incompatibility in its simplest form: infected females are compatible  
7  
8 405 with both infected and uninfected males, whereas uninfected females produce viable  
9  
10 offspring only if they mate with uninfected males.  
11  
12  
13  
14  
15

16 **Figure 2.** A schematic view of the toxin-antidote model. In immature sperm, *Wolbachia* (in  
17  
18 pink) produces both a toxin (yellow particles) and its specific antidote (green particles). As  
19  
20 410 *Wolbachia* is removed from maturing sperm into waste bags (w.b), the antidote, presumably  
21  
22 unstable, is lost faster than the toxin. Upon fertilization of an uninfected egg (left part), the  
23  
24 toxin is thus present and active, impeding the paternal chromosomes through direct or  
25  
26 indirect interactions with chromatin or DNA, which results in embryo death. In infected eggs,  
27  
28 antidotes of maternal origin bind the toxin and thus maintain embryo viability. Alternative CI  
29  
30 mechanisms have been envisaged [21,22,83,84] but the model depicted here best accounts  
31  
32 for all CI features [25], including its recently discovered genetic architecture [26–29].  
33  
34 415  
35  
36  
37  
38  
39  
40  
41

42 **Figure 3.** A nomenclature proposal and schematic view of the putative CI operons structures.  
43  
44 In this naming system, the *cif* (and Cif) terms designate CI genes (and proteins) in general,  
45  
46 420 while genes from specific operon categories are called according to the enzymatic activity of  
47  
48 the putative toxin (DUB, nuclease or both). The first and second gene within each operon are  
49  
50 denoted A and B, respectively, and the *Wolbachia* strain is indicated as a superscript when  
51  
52 relevant. The structure of several CI operons is shown to illustrate this system, with active-site  
53  
54 residues labeled.  
55  
56  
57  
58  
59

60 425  
61  
62  
63  
64  
65

## References

- 1 Moran, N.A. (2006) Symbiosis. *Curr. Biol.* 16, R866-71
- 2 Kirkness, E.F. *et al.* (2010) Genome sequences of the human body louse and its primary  
3 endosymbiont provide insights into the permanent parasitic lifestyle. *Proc. Natl. Acad.*  
4 *Sci.* 107, 12168–12173
- 5  
6  
7  
8  
9  
10  
11 430
- 12  
13 3 Hurst, G.D.D. and Crystal, L. (2015) Reproductive Parasitism : Maternally Inherited  
14 Symbionts in a Biparental World. *Cold Spring Harb Perspect Biol* 7, a017699
- 15  
16  
17  
18 4 Charlat, S. *et al.* (2003) Evolutionary consequences of *Wolbachia* infections. *Trends*  
19 *Genet* 19, 217–223
- 20  
21  
22  
23  
24 435 5 Werren, J.H. *et al.* (2008) *Wolbachia*: master manipulators of invertebrate biology. *Nat.*  
25 *Rev. Microbiol.* 6, 741–51
- 26  
27  
28  
29 6 Weinert, L.A. *et al.* (2015) The incidence of bacterial endosymbionts in terrestrial  
30 arthropods. *Proc. R. Soc. B Biol. Sci.* 282, 20150249–20150249
- 31  
32  
33  
34 7 Bailly-Bechet, M. *et al.* (2017) How Long Does *Wolbachia* Remain on Board? *Mol. Biol.*  
35 *Evol.* 34,
- 36  
37 440
- 38  
39 8 Hertig, M. and Wolbach, S.B. (1924) Studies on *rickettsia*-like microorganisms in  
40 insects. *J. Med. Res.* 44, 329–374
- 41  
42  
43  
44 9 Marshall, J.F. (1938) *The british mosquitoes*, British Museum.
- 45  
46  
47 10 Roubaud, E. (1941) Phénomènes d'amixie dans les intercroisements de Culicides du  
48 groupe pipiens. *Comptes Rendus l'Academie des Sci. Paris* 212, 257–259
- 49  
50 445
- 51  
52 11 Laven, H. Crossing experiments with *Culex* strains. , *Evolution*, 5. Dec-(1951) , 370–375
- 53  
54  
55 12 Yen, J.H. and Barr, A.R. (1971) New hypothesis of the cause of cytoplasmic  
56 incompatibility in *Culex pipiens* L. *Nature* 232, 657–658
- 57  
58  
59  
60 13 Yen, J.H. and Barr, a R. (1973) The etiological agent of cytoplasmic incompatibility in  
61  
62  
63  
64  
65

- 450 *Culex pipiens*. *J. Invertebr. Pathol.* 22, 242–250
- 1  
2  
3 14 Caspari, E. and Watson, G.S. (1959) On the evolutionary importance of cytoplasmic  
4  
5 sterility in mosquitoes. *Evolution (N. Y.)*. 13, 568–570  
6  
7 15 Fine, P.E.M. (1978) On the dynamics of symbiont-dependent cytoplasmic  
8  
9 incompatibility in Culicine mosquitoes. *J. Invertebr. Pathol.* 30, 10–18  
10  
11  
12 455 16 Hoffmann, A.A. *et al.* (1986) Unidirectional incompatibility between populations of  
13  
14 *Drosophila simulans*. *Evolution (N. Y.)*. 40, 692–701  
15  
16  
17 17 Turelli, M. and Hoffmann, A.A. (1995) Cytoplasmic incompatibility in *Drosophila*  
18  
19 *simulans*: dynamics and parameter estimates from natural populations. *Genetics* 140,  
20  
21 1319–1338  
22  
23  
24 460 18 Werren, J.H. (1997) Biology of *Wolbachia*. *Annu Rev Entomol* 42, 587–609  
25  
26  
27 19 Hurst, L.D. (1991) The evolution of cytoplasmic incompatibility or when spite can be  
28  
29 successful. *J. Theor. Biol.* 148, 269–277  
30  
31  
32 20 Breeuwer, J.A. and Werren, J.H. (1990) Microorganisms associated with chromosome  
33  
34 destruction and reproductive isolation between two insect species. *Nature* 346, 558–  
35  
36 560  
37  
38 465  
39  
40 21 Kose, H. and Karr, T.L. (1995) Organization of *Wolbachia pipientis* in the *Drosophila*  
41  
42 fertilized egg and embryo revealed by an anti-*Wolbachia* monoclonal antibody. *Mech*  
43  
44 *Dev* 51, 275–288  
45  
46  
47 22 Callaini, G. *et al.* (1997) *Wolbachia*-induced delay of paternal chromatin condensation  
48  
49 does not prevent maternal chromosomes from entering anaphase in incompatible  
50  
51 470  
52  
53 crosses of *Drosophila simulans*. *J Cell Sci* 110 ( Pt 2, 271–280  
54  
55  
56 23 Merçot, H. and Poinso, D. (1998) *Wolbachia* of the third kind was overlooked... ..and  
57  
58 discovered on Mount Kilimanjaro. *Nature* 391, 853  
59  
60  
61  
62  
63  
64  
65

- 1  
2 475  
3  
4  
5 24 Bourtzis, K. *et al.* (1998) Rescuing *Wolbachia* have been overlooked. *Nature* 391, 852–  
6 853  
7  
8 25 Poinot, D. *et al.* (2003) On the mechanism of *Wolbachia*-induced cytoplasmic  
9 incompatibility: Confronting the models with the facts. *BioEssays* 25,  
10  
11 26 Beckmann, J.F. and Fallon, A.M. (2013) Detection of the *Wolbachia* protein WPIP0282  
12 in mosquito spermathecae: Implications for cytoplasmic incompatibility. *Insect*  
13  
14 480 *Biochem. Mol. Biol.* 43, 867–878  
15  
16  
17 27 Beckmann, J.F. *et al.* (2017) A *Wolbachia* deubiquitylating enzyme induces cytoplasmic  
18 incompatibility. *Nat. Microbiol.* 2, 17007  
19  
20  
21 28 LePage, D.P. *et al.* (2017) Prophage WO genes recapitulate and enhance *Wolbachia*-  
22 induced cytoplasmic incompatibility. *Nature* 543, 243–247  
23  
24  
25 485 29 Shropshire, J.D. *et al.* (2018) One prophage WO gene rescues cytoplasmic  
30 incompatibility in *Drosophila melanogaster*. *Proc. Natl. Acad. Sci.* 115, 4987–4991  
31  
32  
33 30 Bonneau, M. *et al.* (2018) *Culex pipiens* crossing type diversity is governed by an  
34 amplified and polymorphic operon of *Wolbachia*. *Nat. Commun.* 9, 319  
35  
36  
37 31 Karr, T.L. (2007) Fruit flies and the sperm proteome. *Hum. Mol. Genet.* 16, R124–R133  
38  
39  
40 41 490 32 Wasbrough, E.R. *et al.* (2010) The *Drosophila melanogaster* sperm proteome-II (DmSP-  
42 II). *J. Proteomics* 73, 2171–2185  
43  
44  
45 33 Yamaguchi, Y. *et al.* (2011) Toxin-Antitoxin Systems in Bacteria and Archaea. *Annu. Rev.*  
46 *Genet.* 45, 61–79  
47  
48  
49 34 Lindsey, A.R.I. *et al.* (2018) Evolutionary Genetics of Cytoplasmic Incompatibility Genes  
50 cifA and cifB in Prophage WO of *Wolbachia*. *Genome Biol. Evol.* 10, 434–451  
51 495  
52  
53  
54 35 Güell, M. *et al.* (2011) Bacterial transcriptomics: What is beyond the RNA horiz-ome?  
55  
56  
57  
58  
59  
60  
61  
62  
63  
64  
65

- 1  
2  
3  
4  
5 500 36 Gillespie, J.J. *et al.* (2018) A tangled web: origins of reproductive parasitism  
Evolutionary Insight into Reproductive Parasitism 2. 10, 2292–2309  
6  
7  
8  
9  
10  
11  
12 37 Poinot, D. *et al.* (1998) *Wolbachia* transfer from *Drosophila melanogaster* into *D.*  
13 *simulans*: Host effect and cytoplasmic incompatibility relationships. *Genetics* 150, 227–  
14 237  
15  
16  
17 38 Merçot, H. and Charlat, S. (2004) *Wolbachia* infections in *Drosophila melanogaster* and  
18 505 *D. simulans*: polymorphism and levels of cytoplasmic incompatibility. *Genetica* 120, 51–  
19 59  
20  
21 39 Turelli, M. (1994) Evolution of incompatibility-inducing microbes and their hosts.  
22 *Evolution (N. Y.)*. 48, 1500–1513  
23  
24  
25 40 Rasgon, J.L. and Scott, T.W. (2003) *Wolbachia* and cytoplasmic incompatibility in the  
26 California *Culex pipiens* mosquito species complex: parameter estimates and infection  
27 dynamics in natural populations. *Genetics* 165, 2029–2038  
28 510  
29  
30  
31 41 Dumas, E. *et al.* (2016) Molecular data reveal a cryptic species within the *Culex pipiens*  
32 mosquito complex. *Insect Mol. Biol.* 25, 800–809  
33  
34  
35  
36 42 Atyame, C.M.C.M. *et al.* (2014) *Wolbachia* divergence and the evolution of cytoplasmic  
37 incompatibility in *Culex pipiens*. *PLoS One* 9, e87336  
38  
39  
40  
41 515 43 Duron, O. *et al.* (2006) Tracking factors modulating cytoplasmic incompatibilities in the  
42 mosquito *Culex pipiens*. *Mol Ecol* 15, 3061–3071  
43  
44  
45  
46  
47  
48  
49 44 Nor, I. *et al.* (2013) On the genetic architecture of cytoplasmic incompatibility:  
50 inference from phenotypic data. *Am. Nat.* 182, E15–24  
51  
52  
53  
54 45 Turelli, M. *et al.* (2018) Rapid Global Spread of wRi-like *Wolbachia* across Multiple  
55 *Drosophila*. *Curr. Biol.* 28, 963–971.e8  
56 520  
57  
58  
59 46 Atyame, C.M. *et al.* (2011) Multiple *Wolbachia* determinants control the evolution of  
60  
61  
62  
63  
64  
65



cytoplasmic incompatibilities in *Culex pipiens* mosquito populations. *Mol. Ecol.* 20, 286–

298

47 Atyame, C.M. *et al.* (2011) Diversification of *Wolbachia* Endosymbiont in the *Culex*  
525 *pipiens* Mosquito. *Mol. Biol. Evol.* 28, 2761–2772

48 Charlat, S. *et al.* (2001) On the mod resc model and the evolution of *Wolbachia*  
compatibility types. *Genetics* 159, 1415–1422

49 Charlat, S. *et al.* (2005) Exploring the evolution of *Wolbachia* compatibility types: a  
simulation approach. *Genetics* 170, 495–507

530 50 Aakre, C.D. *et al.* (2015) Evolving New Protein-Protein Interaction Specificity through  
Promiscuous Intermediates. *Cell* 163, 594–606

51 Sutton, E.R. *et al.* (2014) Comparative genome analysis of *Wolbachia* strain wAu. *BMC*  
*Genomics* 15, 928

52 Penz, T. *et al.* (2012) Comparative Genomics Suggests an Independent Origin of  
535 Cytoplasmic Incompatibility in *Cardinium hertigii*. *PLoS Genet.* 8, e1003012

53 Takano, S. *et al.* (2017) Unique clade of alphaproteobacterial endosymbionts induces  
complete cytoplasmic incompatibility in the coconut beetle. *Proc. Natl. Acad. Sci.* 114,  
6110–6115

54 Burt, A. and Trivers, R. (2006) *Genes in Conflict: The Biology of Selfish Genetic Elements*,  
540 Belknap Press.

55 Hamilton, W.D. (1963) The evolution of altruistic behavior. *Am. Nat.* 97, 354–356

56 Hickey, D. a (1982) Selfish DNA: a sexually-transmitted nuclear parasite. *Genetics* 101,  
519–31

57 Bordenstein, S.R. and Bordenstein, S.R. (2016) Eukaryotic association module in phage  
545 WO genomes from *Wolbachia*. *Nat. Commun.* 7, 1–10

- 1  
2  
3  
4  
5  
6  
7  
8  
9  
10 550 58 Van Melderren, L. and De Bast, M.S. (2009) Bacterial toxin-Antitoxin systems: More than  
11 selfish entities? *PLoS Genet.* 5,  
12  
13  
14  
15 59 Kobayashi, I. (2001) Behavior of restriction-modification systems as selfish mobile  
16 elements and their impact on genome evolution. *Nucleic Acids Res.* 29, 3742–3756  
17  
18  
19  
20 60 Mruk, I. and Kobayashi, I. (2014) To be or not to be: Regulation of restriction-  
21 modification systems and other toxin-antitoxin systems. *Nucleic Acids Res.* 42, 70–86  
22  
23 555 61 Inglis, R.F. *et al.* (2013) The role of bacteriocins as selfish genetic elements. *Biol. Lett.* 9,  
24 8–11  
25  
26 62 Rankin, D.J. *et al.* (2011) What traits are carried on mobile genetic elements, and why.  
27 *Heredity (Edinb).* 106, 1–10  
28  
29 63 Kusano, K. *et al.* (1995) Restriction-modification systems as genomic parasites in  
30 competition for specific sequences. *Proc. Natl. Acad. Sci. U. S. A.* 92, 11095–11099  
31  
32 64 Rankin, D.J. *et al.* (2012) The coevolution of toxin and antitoxin genes drives the  
33 dynamics of bacterial addiction complexes and intragenomic conflict. *Proc. R. Soc. B*  
34 *Biol. Sci.* 279, 3706–3715  
35 560  
36  
37 65 Klasson, L. *et al.* (2008) Genome Evolution of *Wolbachia* Strain wPip from the *Culex*  
38 *pipiens* Group. *Mol. Biol. Evol.* 25, 1877–1887  
39  
40  
41  
42 66 Poinot, D. (1997) , Infection par *Wolbachia* chez *Drosophila simulans* : etude des  
43 interactions hote-symbiote, PhD thesis. , University Paris 6  
44  
45  
46  
47 565 67 Atyame, C.M. *et al.* (2011) Multiple *Wolbachia* determinants control the evolution of  
48 cytoplasmic incompatibilities in *Culex pipiens* mosquito populations. *Mol. Ecol.* 20, 286–  
49 98  
50  
51  
52  
53  
54  
55  
56 68 Zabalou, S. *et al.* (2008) Multiple rescue factors within a *Wolbachia* strain. *Genetics*  
57 178, 2145–2160  
58  
59  
60  
61  
62  
63  
64  
65

570 69 Dedeine, F. *et al.* (2001) Removing symbiotic *Wolbachia* bacteria specifically inhibits  
1 oogenesis in a parasitic wasp. *Proc Natl Acad Sci U S A* 98, 6247–6252  
2  
3  
4  
5 70 Hosokawa, T. *et al.* (2010) *Wolbachia* as a bacteriocyte-associated nutritional  
6 mutualist. *Proc. Natl. Acad. Sci. U. S. A.* 107, 769–74  
7  
8  
9  
10 71 Taylor, M.J. *et al.* (2005) *Wolbachia* bacterial endosymbionts of filarial nematodes. *Adv*  
11  
12  
13 575 *Parasitol* 60, 245–284  
14  
15 72 O’Neill, S.L. *et al.* (1997) *Influent Passengers : Inherited Microorganisms and*  
16  
17 *Arthropod Reproduction*, Oxford University Press.  
18  
19  
20 73 Fenton, A. *et al.* (2011) Solving the *Wolbachia* Paradox: Modeling the Tripartite  
21  
22 Interaction between Host, *Wolbachia*, and a Natural Enemy. *Am. Nat.* 178, 333–42  
23  
24  
25 580 74 Teixeira, L. *et al.* (2008) The bacterial symbiont *Wolbachia* induces resistance to RNA  
26  
27 viral infections in *Drosophila melanogaster*. *PLoS Biol.* 6, 2753–2763  
28  
29  
30 75 Moreira, L.A. *et al.* (2009) A *Wolbachia* Symbiont in *Aedes aegypti* Limits Infection with  
31  
32 Dengue, Chikungunya, and Plasmodium. *Cell* 139, 1268–1278  
33  
34  
35 76 Flores, H.A. and O’Neill, S.L. (2018) Controlling vector-borne diseases by releasing  
36  
37 modified mosquitoes. *Nat. Rev. Microbiol.* 16, 508–518  
38  
39 585  
40  
41 77 Vavre, F. and Charlat, S. (2012) Making (good) use of *Wolbachia*: What the models say.  
42  
43 *Curr. Opin. Microbiol.* 15,  
44  
45  
46 78 Kamtchum-Tatuene, J. *et al.* (2017) The potential role of *Wolbachia* in controlling the  
47  
48 transmission of emerging human arboviral infections. *Curr. Opin. Infect. Dis.* 30, 108–  
49  
50  
51 590 116  
52  
53  
54 79 Landmann, F. *et al.* (2009) *Wolbachia*-mediated cytoplasmic incompatibility is  
55  
56 associated with impaired histone deposition in the male pronucleus. *PLoS Pathog* 5,  
57  
58 e1000343  
59  
60  
61  
62  
63  
64  
65

1  
2  
3  
4  
5  
6  
7  
8  
9  
10  
11  
12  
13  
14  
15  
16  
17  
18  
19  
20  
21  
22  
23  
24  
25  
26  
27  
28  
29  
30  
31  
32  
33  
34  
35  
36  
37  
38  
39  
40  
41  
42  
43  
44  
45  
46  
47  
48  
49  
50  
51  
52  
53  
54  
55  
56  
57  
58  
59  
60  
61  
62  
63  
64  
65

80 Reed, K.M. and Werren, J.H. (1995) Induction of paternal genome loss by the paternal-  
595 sex-ratio chromosome and cytoplasmic incompatibility bacteria (*Wolbachia*): a  
comparative study of early embryonic events. *Mol Reprod Dev* 40, 408–418

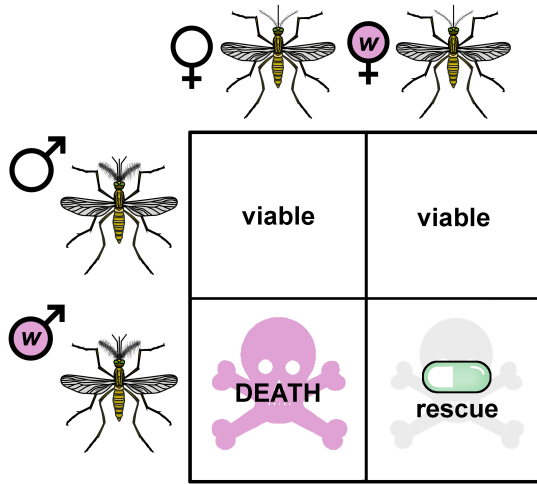
81 Ryan, S.L. and Saul, G.B. (1968) Post-fertilization effect of incompatibility factors in  
Mormoniella. *Mol. Gen. Genet.* 103, 29–36

82 Bonneau, M. *et al.* (2018) The cellular phenotype of cytoplasmic incompatibility in  
600 *Culex pipiens* in the light of *cidB* diversity. *Plos Pathog.* DOI:  
10.1371/journal.ppat.1007364

83 Pontier, S.M. and Schweisguth, F. (2015) A *Wolbachia*-Sensitive Communication  
between Male and Female Pupae Controls Gamete Compatibility in *Drosophila*. *Curr.*  
*Biol.* 25, 1–10

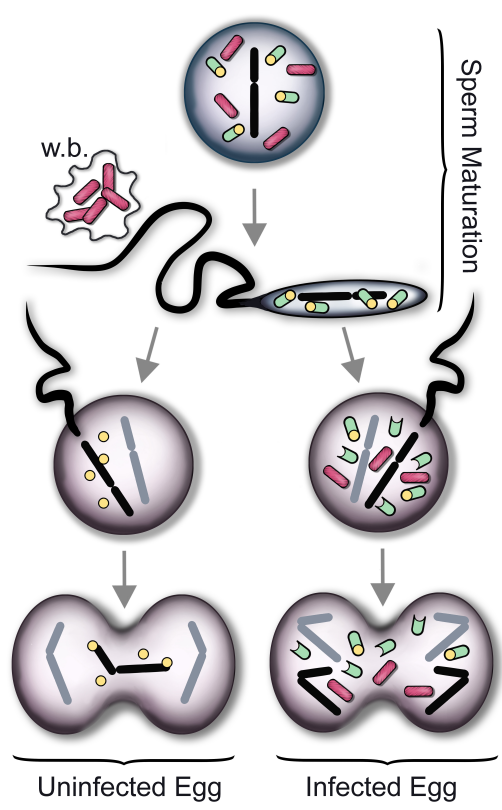
605 84 Jacquet, A. *et al.* (2017) Does pupal communication influence *Wolbachia*-mediated  
cytoplasmic incompatibility? *Curr. Biol.* 27, R53–R55

Figure 1



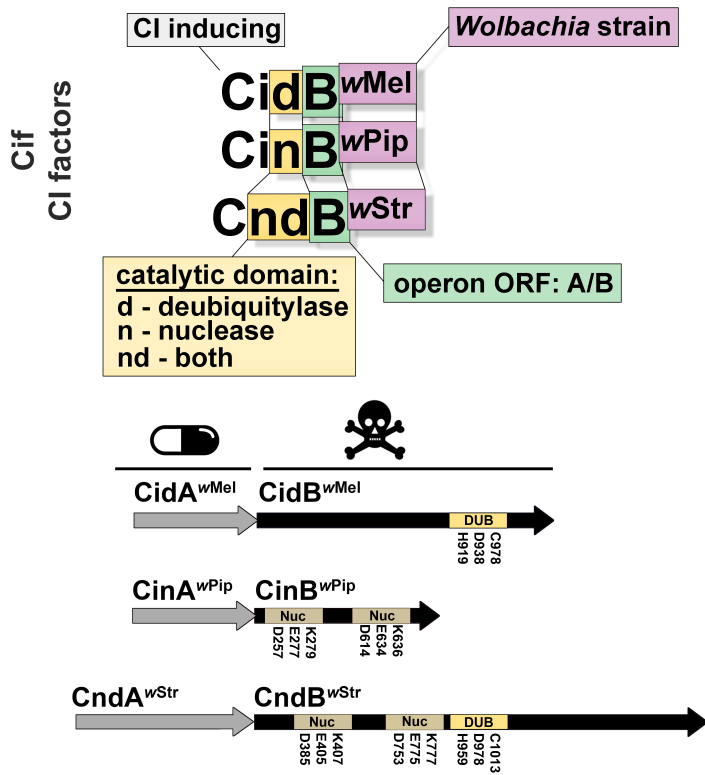
Accepted Manuscript

Figure 2



Accepted Manuscript

Figure 3



Accepted Manuscript

## Highlights

*Wolbachia* are maternally inherited intracellular bacteria of many Arthropod species. They can invade populations through various strategies, including Cytoplasmic Incompatibility (CI), whereby the symbionts protect eggs from the lethal effect of infected males' sperm.

It has long been proposed that this phenomenon may rely on a toxin deposited by the bacterium before its elimination from maturing sperm, and an antidote, provided in an infected egg by the maternal symbiont.

Recent research toward the molecular basis of CI have turned the spotlight on two syntenic loci in a prophage region which recapitulate the CI phenotype and are organised in a typical toxin-antidote fashion.

This genetic architecture, archetypal of toxin-antidote systems promoting the spread of selfish mobile elements in free living bacteria, provides clues to the possible evolutionary origin of CI.



## Outstanding questions

- What are the genes behind CI? Do they encode a toxin-antidote system?
- Among the various paralogs of the putative CI genes (*cif*, for CI factors) are only *cid* operons (including a DUB toxin) involved in CI, or also those including a nuclease toxin (*cin*) or toxins combining the two functions (*cnd*)?
- Is CI induced by CifB proteins alone? Why then is CI not recapitulated by sole transgenic expression of the main putative toxin gene (*cidB*) in *Drosophila*? Could this be explained by toxic effects of CidB outside of the first embryonic division, making the presence of its cognate antidote (CidA) required for fly survival or CI expression?
- How would CifB proteins induce embryo death? What targets are affected by the DUB activity of CidB? Are these in direct interaction with paternal chromosomes, or affecting upstream regulators of the cell-cycle? Do CidB and CinB proteins affect the same pathway?
- How do CifA proteins inhibit CifB toxicity without necessarily affecting their enzymatic activity? Could CifB sequestration or relocalization be involved?
- Can variation in *cid* genes, both in copy number and sequence variation, explain on their own the complex CI patterns in natural populations of the mosquito *C. pipiens*?
- How do mutually incompatible *Wolbachia* strains evolve? What is the contribution of gene duplication to this process? How specific is the *cifA* / *cifB* interaction, and does this vary across *cif* loci?
- Are all CI cases involving *cif* operons? What are the functions of their numerous distant homologues in other intra-cellular bacteria?
- How did CI evolve? Why are *cif* genes located in a prophage? Could CI derive from a selfish phage invading system?