



**HAL**  
open science

## New determination of abundances and stellar parameters for a set of weak G -band stars

Ana Palacios, Gérard Jasiewicz, T. Masseron, F. Thévenin, Johanna Itam-Pasquet, M. Parthasarathy

### ► To cite this version:

Ana Palacios, Gérard Jasiewicz, T. Masseron, F. Thévenin, Johanna Itam-Pasquet, et al.. New determination of abundances and stellar parameters for a set of weak G -band stars. *Astronomy and Astrophysics - A&A*, 2016, 587, pp.A42. 10.1051/0004-6361/201526566 . hal-02009416

**HAL Id: hal-02009416**

**<https://hal.science/hal-02009416>**

Submitted on 3 Jan 2023

**HAL** is a multi-disciplinary open access archive for the deposit and dissemination of scientific research documents, whether they are published or not. The documents may come from teaching and research institutions in France or abroad, or from public or private research centers.

L'archive ouverte pluridisciplinaire **HAL**, est destinée au dépôt et à la diffusion de documents scientifiques de niveau recherche, publiés ou non, émanant des établissements d'enseignement et de recherche français ou étrangers, des laboratoires publics ou privés.

# New determination of abundances and stellar parameters for a set of weak G-band stars<sup>★</sup>

A. Palacios<sup>1</sup>, G. Jasniewicz<sup>1</sup>, T. Masseron<sup>2</sup>, F. Thévenin<sup>3</sup>, J. Itam-Pasquet<sup>1</sup>, and M. Parthasarathy<sup>4</sup>

<sup>1</sup> LUPM UMR 5299 CNRS/UM, Université de Montpellier, CC 72, 34095 Montpellier Cedex 05, France  
e-mail: ana.palacios@umontpellier.fr

<sup>2</sup> Institute of Astronomy – University of Cambridge, Madingley Road, Cambridge CB3 0HA, UK

<sup>3</sup> Laboratoire Lagrange, UMR 7293, OCA, CS 34229, 06304 Nice Cedex 4, France

<sup>4</sup> Indian Institute of Astrophysics, Koramangala, 560034 Bangalore, India

Received 20 May 2015 / Accepted 2 December 2015

## ABSTRACT

**Context.** Weak G-band (wGb) stars are a very peculiar class of red giants; they are almost devoided of carbon and often present mild lithium enrichment. Despite their very puzzling abundance patterns, very few detailed spectroscopic studies existed up to a few years ago, which prevented any clear understanding of the wGb phenomenon. We recently proposed the first consistent analysis of published data for a sample of 28 wGb stars and were able to identify them as descendants of early A-type to late B-type stars, although we were not able to conclude on their evolutionary status or the origin of their peculiar abundance pattern.

**Aims.** Using new high-resolution spectra, we present the study of a new sample of wGb stars with the aim of homogeneously deriving their fundamental parameters and surface abundances for a selected set of chemical species that we use to improve our insight on this peculiar class of objects.

**Methods.** We obtained high-resolution and high signal-to-noise spectra for 19 wGb stars in the southern and northern hemisphere that we used to perform consistent spectral synthesis to derive their fundamental parameters and metallicities, as well as the spectroscopic abundances for Li, C, <sup>12</sup>C/<sup>13</sup>C, N, O, Na, Sr, and Ba. We also computed dedicated stellar evolution models that we used to determine the masses and to investigate the evolutionary status and chemical history of the stars in our sample.

**Results.** We confirm that the wGb stars are stars with initial masses in the range 3.2 to 4.2  $M_{\odot}$ . We suggest that a large fraction could be mildly evolved stars on the subgiant branch currently undergoing the first dredge-up, while a smaller number of stars are more probably in the core He burning phase at the clump. After analysing their abundance pattern, we confirm their strong nitrogen enrichment anti-correlated with large carbon depletion, characteristic of material fully processed through the CNO cycle to an extent not known in evolved intermediate-mass stars in the field and in open clusters. However, we demonstrate here that such a pattern is very unlikely owing to self-enrichment.

**Conclusions.** In the light of the current observational constraints, no solid self-consistent pollution scenario can be presented either, leaving the wGb puzzle largely unsolved.

**Key words.** stars: abundances – stars: carbon – stars: chemically peculiar – stars: late-type – stars: evolution

## 1. Introduction

The weak G-band (wGb) stars are G and K giants whose spectra show very weak or absent G-band of the molecule CH at 4300 Å. The first one, HD 18474, was discovered in the northern sky by [Bidelman \(1951\)](#) and is the prototype of this class of stars. Later [Bidelman & MacConnell \(1973\)](#) established a list of 34 wGb stars in the southern sky (declination  $-83^{\circ} < \delta < +6^{\circ}$ ). These stars are rare among the population of G-K giants in the Galaxy. The ratio of wGb stars among G-K giants in the Bright Star Catalogue is less than 0.3%. This small sample of stars was mainly studied in the late 1970s and early 1980s (see e.g. [Snedden et al. 1978](#); [Rao 1978](#); [Cottrell & Norris 1978](#); [Parthasarathy & Rao 1980](#); [Day 1980](#); [Parthasarathy et al. 1984](#)). Later [Snedden & Pilachowski \(1984\)](#) found an excellent agreement between carbon abundances derived from spectroscopic CO data and

those determined using features of the CH (G-band). [Lambert & Sawyer \(1984\)](#) confirmed the presence of lithium in some of the wGb stars, adding yet another complexity to these peculiar objects. It is only in the past few years that the interest for these objects has been reawakened with the papers by [Palacios et al. \(2012](#); hereafter Paper I) and [Adamczak & Lambert \(2013](#); hereafter AL13).

In Paper I, we homogeneously reanalysed spectroscopic archival data for a sample of wGb stars, and used dedicated stellar evolution models to establish their mass range. They appear to be the descendants of 3  $M_{\odot}$  to 4.5  $M_{\odot}$  stars, now located in the crowded Hertzsprung-Russell (HR) diagram region of the red clump, which makes their evolutionary status ambiguous (red giant or core helium burning stars). This result is confirmed by AL13 in their new spectroscopic study of a large sample of 24 southern wGb stars.

They establish that wGb stars present a strong depletion in carbon that is about a factor of 20 larger than for normal giants and that the <sup>12</sup>C/<sup>13</sup>C ratio approaches the CN-cycle equilibrium value. In addition, they emphasize a strong N overabundance anti-correlated with the C underabundance, which indicates that

<sup>★</sup> Based on data collected at La Silla Observatory (ESO, Chile), program identifier ID 089.D-0189(A), and at the Telescope *Bernard Lyot* (USR5026) operated by the Observatoire Midi-Pyrénées, Université de Toulouse (Paul Sabatier), Centre National de la Recherche Scientifique of France.

**Table 1.** Basic data and atmospheric parameters of weak *G*-band stars.

HD No.	$T$ (K)	$eT$ (K)	$\log g$ (dex)	$e\log g$ (dex)	$\log(L/L_{\odot})$ (dex)	$e\log(L/L_{\odot})$ (dex)	$\xi_{\text{turb}}$ $\text{km s}^{-1}$	$e\xi_{\text{turb}}$ $\text{km s}^{-1}$	$\nu \sin i$ $\text{km s}^{-1}$	Colour coding
HD 18474	5198	38	2.65	0.03	2.11	0.08	1.54	0.03	<5	black
HD 49960	5030	32	2.61	0.05	2.09	0.09	1.89	0.05	<5	red
HD 56438	5037	163	2.75	0.01	1.94	0.09	1.15	0.11	<5	green
HD 67728	4827	121	2.28	0.13	2.42	0.16	1.87	0.07	13	blue
HD 78146	4734	96	2.13	0.03	2.55	0.09	1.74	0.05	<5	cyan
HD 82595	4995	79	2.28	0.01	2.47	0.08	1.62	0.04	<5	magenta
HD 91805	5247	15	2.56	0.04	2.21	0.08	1.63	0.03	<5	orange
HD 94956	5131	75	2.76	0.30	1.99	0.31	1.74	0.04	<5	light blue
HD 102851	4991	41	2.68	0.26	2.01	0.27	1.91	0.05	<5	reddish brown
HD 119256	4984	54	2.64	0.07	2.04	0.10	1.71	0.04	<5	light pink
HD 120170	5127	38	2.76	0.06	1.97	0.09	1.46	0.03	<5	light brown
HD 120213	4577	46	1.95	0.26	2.71	0.27	1.70	0.05	<5	light green
HD 124721	5107	61	2.64	0.11	2.10	0.13	1.58	0.04	<5	olive green
HD 146116	4920	33	2.03	0.41	2.73	0.42	2.04	0.05	<5	violet
HD 165462	5078	110	2.45	0.13	2.30	0.15	1.72	0.04	11	dark red
HD 165634	5114	45	2.55	0.08	2.19	0.11	1.54	0.03	<5	lime green
HD 166208	5177	52	2.81	0.04	1.94	0.08	1.92	0.05	<5	golden yellow
HD 204046	4984	90	2.51	0.37	2.20	0.38	1.76	0.04	<5	purple
HD 207774	5125	33	2.79	0.42	1.96	0.43	1.85	0.04	<5	grey

**Notes.** For rotational velocities  $\nu \sin i$ , the typical error is  $2 \text{ km s}^{-1}$ .

the atmospheres of wGb stars have been processed through the CN-cycle and probably also the ON-cycle. These abundance anomalies are often accompanied by high lithium abundances, similar to those of Li-rich K giants ( $A(\text{Li}) \geq 1.4$  dex).

The concurrence of high lithium content and CN(O) cycled material is extremely puzzling since these nuclei are issued from exclusive regions. The interpretation of the abundance pattern of wGb stars differs in AL13 and Paper I, and both studies are inconclusive.

The goal of this paper is to perform a new homogeneous abundance analysis of a large sample of wGb stars with up-to-date model atmospheres and line-lists, and to compare them with the predictions of dedicated stellar evolution models in order to clarify the origin of the peculiarities of wGb stars. To this end we have conducted new spectroscopic observations of a sample of 19 wGb stars, mainly in the southern hemisphere.

We present the sample and the observations in Sect. 2, and the spectral analysis applied to retrieve the atmospheric parameters and abundances in Sect. 3; we also compare our results to AL13 for the stars in common between the two samples. We discuss the dynamical properties of the wGb stars in Sect. 4. We finally use dedicated up-to-date stellar evolution models to reinvestigate the masses and evolutionary status of the stars in our sample (Sect. 5) and proceed to a discussion of the possible scenarios to account for their abundance pattern in Sect. 6 before concluding in Sect. 7.

## 2. Observations

This paper is based on new observations of 19 wGb stars. Seventeen southern wGb stars were observed at La Silla, ESO Chile, with the high-efficiency Fiber-fed Extended Range Optical Spectrograph FEROS spectrograph mounted on the 2.2 m telescope. FEROS is a bench-mounted, thermally controlled, prism-cross-dispersed échelle spectrograph, providing, in a single spectrogram spread over 39 orders, almost complete spectral coverage from  $\sim 350$  to  $\sim 920$  nm at a resolution of 48 000 (Kaufer & Pasquini 1998). The FEROS observations were carried out during an observing run between May 10 and 13, 2012. All these spectra were flat-fielded and calibrated

by means of ThArNe exposures using standard processing tools available at ESO.

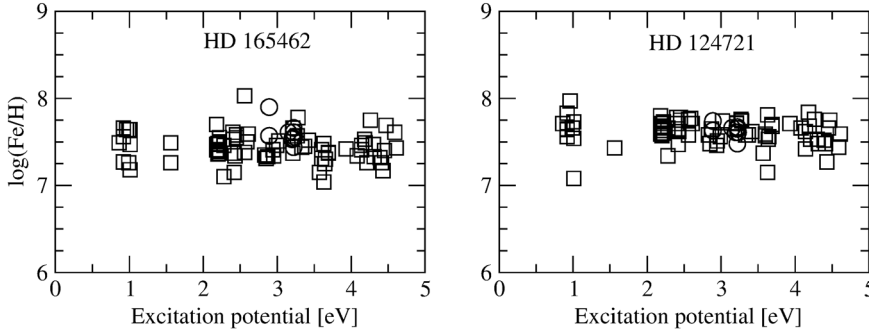
In addition, two northern wGb stars, HD 18474 and HD 166208, were observed in service mode at the Observatoire du Pic du Midi, France, with the NARVAL spectrograph mounted on the *Bernard Lyot* 2.0 m telescope. The NARVAL instrument consists of a bench-mounted cross-dispersed échelle spectrograph, fibre-fed from a Cassegrain-mounted polarimeter unit (Aurière 2003). It was used in its non-polarimetric mode; it provided almost complete spectral coverage from  $\sim 375$  to  $\sim 1050$  nm at a resolution of 75 000 in a single spectrogram spread over 40 orders. The NARVAL data were reduced using the data reduction software Libre-ESPRIT, written and provided by Donati et al. (1997) from the IRAP (Observatoire Midi-Pyrénées).

The observation log is given in Appendix (Table A.1).

## 3. Spectral analysis

All spectra were processed with the Brussels Automatic Code for Characterizing High accuracy Spectra (BACCHUS) pipeline developed by T. Masseron. The BACCHUS code consists of three different modules designed to derive equivalent widths (EWs), stellar parameters, and abundances. The current version relies on a grid of MARCS model atmospheres (Gustafsson et al. 2008), a specific procedure for interpolating the model atmosphere thermodynamical structure within the grid (Masseron 2006) and the radiative transfer code TURBOSPECTRUM (Alvarez & Plez 1998; Plez 2012). It has been successfully compared to other spectral synthesis codes as shown in Jofré et al. (2014) within the framework of the *Gaia* preparation team.

One asset of the BACCHUS code is the computation of EWs, because the EW of only the considered line is taken into account (excluding the contribution from blending lines). Indeed, EWs are not computed directly on the observed spectrum, but rather from the synthetic spectrum with the best-matching abundance. This way, we have access to the information about the contribution of blending lines, which allows a clean measurement of the EW of the line of interest. As a consequence of this efficient blend-removal technique, BACCHUS tends to have EW



**Fig. 1.** Variation of the derived iron abundances as a function of the excitation energy for two wGb stars of our program. Squares indicate Fe I lines and circles Fe II lines.

measurements that are sometimes slightly lower than average, especially below 5000 Å where blends are numerous. The process measuring EWs is iterated with a new model atmosphere taking into account the possible change in metallicity and adjusting the microturbulence velocity by forcing the invariance of derived abundances with respect to the EWs. Additionally, a new convection parameter for the spectral synthesis encompassing macro-turbulence velocity, instrument resolution, and stellar rotation is determined and possibly adopted. This procedure usually converges after two iterations when the correction on the metallicity becomes smaller than the line abundance dispersion.

The last step of the procedure consists in injecting ~80 selected Fe lines and their derived equivalent widths in TURBOSPECTRUM to derive abundances for a set of model atmospheres. For each model, the slopes of abundances against excitation potential and against equivalent widths, as well as Fe I and Fe II lines abundances, are computed. The final parameters are determined by requesting that the ionization equilibrium is fulfilled, and that simultaneously null slopes for abundances against excitation potential and against equivalent widths are encountered.

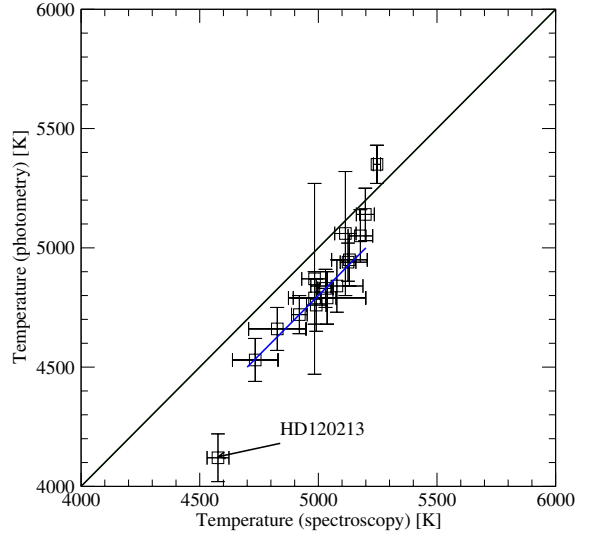
### 3.1. Atmospheric parameters

Atmospheric parameters of our list of wGb stars are given in Table 1. Using the param module of BACCHUS, the effective temperature  $T_{\text{eff}}$ , the logarithmic surface gravity  $\log g$ , the global metallicity  $[\text{Fe}/\text{H}]$ , and the microturbulent velocity  $\xi_{\text{turb}}$  are computed by removing any trends in the  $[\text{Fe}/\text{H}]$  vs.  $E$  and  $[\text{Fe}/\text{H}]$  vs.  $W/L$  relations (where  $E$  is the energy of the lower level of a line,  $W$  the measured equivalent width, and  $L$  the wavelength of the considered line), and by forcing lines of Fe I and Fe II to yield the same abundance. The slopes of Fe abundances against excitation potential are given in Fig. 1 for two wGb stars. The abundance of an element like Fe I, as derived from different spectral lines in a wide range in excitation potential, should be independent of the excitation potential if  $T_{\text{eff}}$  is well determined. FeI and FeII also must have similar abundances if the surface gravity  $\log g$  is well determined. This check for two stars confirms that BACCHUS has robust results. There is some spread in Fig. 1; the most marginal points in this plot disappear as soon as  $W/L < 0.06$ .

The projected rotational velocity  $v \sin i$  is determined for each star by matching a rotational profile to the average line broadening. The luminosities in Table 1 are derived from basic expressions of luminosity and gravity using the relation

$$\log(L/L_{\odot}) = -10.61 + \log(M/M_{\odot}) - \log(g) + 4 \log(T_{\text{eff}}), \quad (1)$$

where  $M$  is the mass of the star in solar units. For the calculation of  $\log(L/L_{\odot})$  we use the masses derived from our stellar evolution models (see Sect. 5) and reported in Table 7.



**Fig. 2.** Comparison of spectroscopic and photometric temperatures. The spectroscopic temperatures are consistently higher than the photometric values. The small light segment indicates an offset of 200 K from the 1:1 ratio shown by the black line.

Figure 2 shows a clear discrepancy between our spectroscopic and photometric temperatures; this discrepancy is comparable to that found by AL13 for their own data (see their Fig. 1 lower panel). The photometric temperatures (see Palacios et al. (2012), Table 1 for stars in common with that paper and the present study) are systematically lower by about 150 K (standard deviation 133 K) compared to the spectroscopic values (given in Table 1). This point will be discussed again in Sect. 3.3.3. We note a significant difference (about 400 K) for HD 120213, which is the coldest wGb star in our sample. In addition, there is a general good agreement within the uncertainties (0.2 dex), except for HD 91805 (0.5 dex), between the luminosities determined from photometry and parallaxes in Palacios et al. (2012) and those determined by spectroscopy in this work (see Table 1).

### 3.2. Abundance determinations

Abundances were determined by means of the abund module of BACCHUS. The abundance determination module proceeds in the following way:

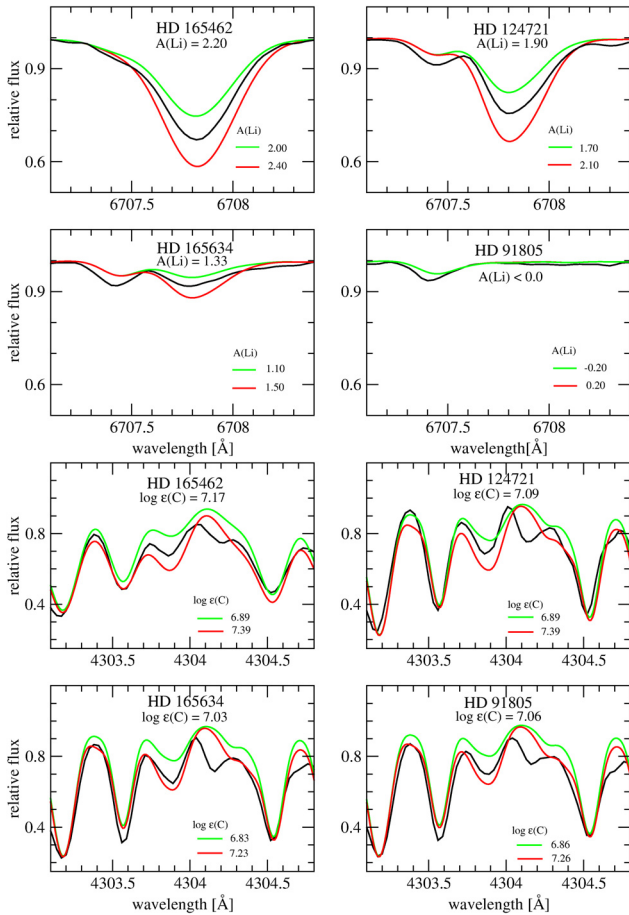
- (i) a spectrum synthesis, using the full set of lines (atomic and molecular), is used for local continuum level finding (correcting for a possible spectrum slope);
- (ii) cosmic and telluric rejections are performed;
- (iii) local signal-to-noise is estimated; and



**Table 2.** Abundances of light elements in wGb stars.

HD No.	[C/H]	$e$ [C/H]	[N/H]	$e$ [N/H]	[O/H]	$e$ [O/H]	[Na/H]	$e$ [Na/H]	A(Li)	$e$ Li	$^{12}\text{C}/^{13}\text{C}$	$e^{12}\text{C}/^{13}\text{C}$
HD 1847	-1.65	0.14	1.01	0.07	0.09	0.05	+0.38	0.03	1.58	0.05	:	:
HD 4996	-1.42	0.11	1.13	0.09	0.24	0.09	+0.25	0.04	0.90	0.05	10	3
HD 5643	-1.58	0.11	1.06	0.08	-0.10	0.05	0.30	0.07	2.03	0.05	5	2
HD 6772	-1.22	0.09	1.24	0.06	0.06	0.05	-0.20	0.12	$\leq 0.0$	0.20	4	1
HD 7814	-1.40	0.10	1.16	0.07	-0.06	0.06	+0.25	0.05	1.01	0.06	4	1
HD 8259	-1.38	0.09	1.09	0.07	-0.12	0.05	+0.31	0.09	1.43	0.05	5	1
HD 9180	-1.33	0.11	1.19	0.09	0.11	0.05	+0.37	0.06	$\leq 0.0$	0.20	5	2
HD 9495	-1.31	0.09	1.13	0.06	0.10	0.05	+0.30	0.05	1.19	0.06	4	1
HD 102851	-1.52	0.11	1.36	0.06	0.52	0.05	+0.10	0.08	0.50	0.20	4	1
HD 119256	-1.22	0.10	1.20	0.05	0.22	0.06	+0.23	0.10	1.07	0.08	4	1
HD 120170	-1.60	0.11	1.10	0.13	0.06	0.05	+0.01	0.08	2.92	0.05	5	2
HD 120213	-1.54	0.10	0.95	0.06	0.29	0.11	+0.16	0.07	1.97	0.05	5	2
HD 124721	-1.30	0.07	1.13	0.07	0.23	0.09	0.30	0.07	1.90	0.09	5	2
HD 146116	-1.35	0.10	0.93	0.06	-0.17	0.05	+0.09	0.05	$\leq 0.0$	0.20	5	1
HD 165462	-1.22	0.06	1.18	0.06	0.00	0.05	0.39	0.02	2.20	0.05	5	2
HD 165634	-1.36	0.10	1.09	0.06	0.12	0.05	0.39	0.07	1.33	0.06	5	2
HD 166208	-0.94	0.09	1.70	0.06	-0.04	0.08	0.46	0.07	1.90	0.06	8	2
HD 204046	-1.40	0.10	1.10	0.07	0.08	0.06	0.03	0.09	0.67	0.07	5	1
HD 207774	-1.20	0.12	1.06	0.06	0.10	0.06	0.13	0.05	$\leq 0.0$	0.20	4	1

**Notes.** All element abundances are given with respect to H, except for lithium which is given in  $\log \epsilon(\text{Li})$ . Solar values are taken from [Asplund et al. \(2005\)](#) and are 8.39, 7.78, 8.66, and 6.17 for C, N, O, and Na, respectively.



**Fig. 3.** Spectra of four wGb stars of our program stars and overplotted synthetic spectra around the 6707.8 Å Li I resonance doublet (*upper panel*) and the 4304 Å C line within the CH G-band (*left panel*).

(iv) a series of flux points contributing to a given absorption line is selected. Abundances are then derived by comparison of

the observed spectrum with a set of convolved synthetic spectra characterized by different abundances.

Four different diagnostics are used:  $\chi^2$  fitting, core line intensity comparison, global goodness-of-fit estimate, and equivalent width comparison. A decision tree then rejects the line or accepts it keeping the best-matching abundance.

After the software automatically accepts a line, we then select the lines for which three diagnostics out of four (see above) are fulfilled, the order of priority being  $\chi^2$  fitting, core line intensity comparison, and equivalent width comparison. We then perform a visual inspection of each line in the spectrum together with a set of overplotted synthetic spectra with different abundances.

Examples of fits to lithium and carbon lines are given in [Fig. 3](#).

The final derived abundances are given in [Tables 2 and 3](#). Solar abundances are taken from [Asplund et al. \(2005\)](#). The most relevant lines for each element that have been used for the determination of LTE abundances are listed here:

- Lithium: 6707.8 Å (see [Fig. 3](#)).
- Nitrogen: about 30 lines, from 7874.9 Å to 8060.2 Å.
- Carbon: two lines in the CH G-band at 4304 Å (see [Fig. 3](#)) and 4311 Å, and two atomic lines in the red part at 8058.6 Å and 8335.1 Å.
- Oxygen: 6300.3 Å.
- Sodium: 4664.8 Å, 5148.8 Å, 5682.6 Å.
- Strontium: 4161.8 Å, 4962.3 Å, 7070.1 Å.
- Barium: 4166 Å, 4554 Å, 5853.7 Å.

We note that these stars are not metal-poor and are poorly affected by NLTE effects on both the determination of  $\log g$  by ionisation balance and on the chemical abundance determination ([Thévenin & Idiart 1999](#); [Idiart & Thévenin 2000](#)).

We confirm the strong carbon deficiency in the wGb stars observed and a carbon isotopic ratio value close to the nuclear equilibrium value of 4 in most of our objects. These results agree with [Palacios et al. \(2012\)](#) and AL13, and are presented in [Table 2](#) and [Fig. 11](#).

**Table 3.** Abundances of heavy elements in wGb stars.

HD No.	[Fe/H]	$\epsilon$ Fe	[Sr/H]	$\epsilon$ Sr	[Ba/H]	$\epsilon$ Ba
HD 18474	-0.14	0.09	-0.10	0.06	0.18	0.07
HD 49960	-0.17	0.13	0.06	0.06	0.14	0.06
HD 56438	-0.04	0.30	0.07	0.06	0.33	0.06
HD 67728	-0.21	0.15	0.10	0.09	0.05	0.12
HD 78146	-0.25	0.11	0.06	0.05	0.11	0.06
HD 82595	0.01	0.11	0.23	0.06	0.53	0.03
HD 91805	-0.10	0.08	0.10	0.09	0.13	0.14
HD 94956	-0.10	0.11	0.09	0.07	0.39	0.03
HD 102851	-0.18	0.12	0.17	0.06	0.10	0.07
HD 119256	-0.06	0.10	0.12	0.04	-0.19	0.07
HD 120170	-0.24	0.08	-0.18	0.12	0.11	0.02
HD 120213	-0.25	0.10	-0.04	0.07	0.39	0.20
HD 124721	-0.04	0.09	0.07	0.06	0.25	0.07
HD 146116	-0.38	0.13	-0.11	0.08	0.37	0.05
HD 165462	-0.06	0.11	-0.18	0.06	0.27	0.09
HD 165634	-0.09	0.09	-0.08	0.09	0.15	0.11
HD 166208	-0.13	0.11	+0.22	0.11	0.16	0.04
HD 204046	-0.11	0.10	-0.08	0.03	0.14	0.12
HD 207774	-0.25	0.11	-0.12	0.07	-0.02	0.03

**Notes.** All element abundances are given with respect to H, except for lithium which is given in  $\log \epsilon(\text{Li})$ . Solar values are taken from [Asplund et al. \(2005\)](#) and are respectively 7.45, 2.92, and 2.17 for Fe, Sr, and Ba.

In [Palacios et al. \(2012\)](#), we reported nitrogen abundances from the literature for four wGb stars (HD 166208, HD 165634, HD 91805, and HD 18474) and compared them to the predictions of our standard and non-standard stellar evolution models, we concluded that they were compatible with models predictions assuming that these stars were either lower red giant branch stars or red clump stars. In the meantime AL13 published new abundances for a set of wGb stars derived from high-resolution spectra, revealing a clear nitrogen enrichment of their atmospheres, anti-correlated with the carbon abundance, and interpreted these results as the signature of CN nuclear cycling. Our present study confirms the abundances derived by AL13, and indicates strong enrichment (mean value of about  $\langle [\text{N}/\text{H}] \rangle = 1.3$  dex) in these stars as shown in Table 2 and Fig. 11.

### 3.3. Errors

#### 3.3.1. Random and systematic errors

Table 1 shows the random errors for the basic fundamental parameters. Errors on effective temperature, microturbulence, and surface gravity have been derived by evaluating the error due to line-to-line Fe abundance scatter on the excitation and equivalent width trends as well as on ionisation balance, respectively. The resulting errors on those parameters have then been propagated on the determination of the luminosity.

Because all the stars have similar parameters, systematic errors on abundances have been evaluated by deriving the abundances in only one star in our sample and by adding  $+1\sigma$  error on stellar parameters. The resulting values are presented in Table 4 (Col. 2). While they can be almost neglected for C and Sr abundances, they appear to be significant for the other elements abundances compared to random errors (see Table 4 Col. 4).

#### 3.3.2. Comparison with previous data

[Adamczak & Lambert \(2013\)](#) have published astrophysical parameters and abundances of 24 wGb stars, of which 13 are in

**Table 4.** Errors on abundance determination.

[X/H] (dex)	$\Delta([\text{X}/\text{H}])^a$ (dex)	$\Delta([\text{X}/\text{H}])^b$ (dex)	random error (dex)
C	0.067	0.129	0.12
N	0.134	0.116	0.11
O	-0.168	-0.028	0.06
Li	0.212	-0.023	0.05
Na	0.186	-0.069	0.10
Ba	-0.189	-0.071	0.10
Sr	0.043	0.033	0.17

**Notes.** Columns 2 and 3: systematic errors; <sup>(a)</sup> comparison between abundances deduced from two different atmosphere models ( $T_{\text{eff}} = 5206$  K,  $\log g = 2.4$  and  $T_{\text{eff}} = 5037$  K,  $\log g = 2.75$ ) for HD 56438. For each element X,  $\Delta([\text{X}/\text{H}]) = [\text{X}/\text{H}]_{(5206\text{K model})} - [\text{X}/\text{H}]_{(5037\text{K model})}$ . <sup>(b)</sup> Comparison between abundances obtained with a C-deficient atmosphere model and a solar atmosphere model. For each element X,  $\Delta([\text{X}/\text{H}]) = [\text{X}/\text{H}]_{\text{C-deficient model}} - [\text{X}/\text{H}]_{\text{solar model}}$ .

common with our study. Comparison between our work and theirs is given in Table 5. Our spectroscopic temperatures are consistently higher by 140 K (standard deviation 59 K) than those of AL13, which results in an overall small discrepancy between our astrophysical parameters and abundances and theirs, though this discrepancy remains within the limit of respective probable errors. Nevertheless, there are three stars (HD 18474, HD 67728, and HD 120170) for which there are significant discrepancies  $\geq 0.3$  dex in abundances; these stars correspond to those with  $\Delta(T_{\text{eff}}) \geq 200$  K in Table 5.

In Sect. 3.1 we note a discrepancy between our spectroscopic and photometric temperatures. [Adamczak & Lambert \(2013\)](#) report a similar difference of about 190 K between the two techniques without being able to clarify this point. We suspect that this is partly due to the chemical peculiarity that affects both types of analysis; we discuss this point below.

#### 3.3.3. Influence of the C and N peculiar abundances on atmospheric parameters and abundances

Because wGb stars have a distinct chemical composition compared to other field stars, it is expected that this changes the structure of the stellar atmosphere. In this section we study more quantitatively the impact of the chemical peculiarities on atmospheric parameters and abundances.

We compute two model atmospheres with the MARCS code ([Gustafsson et al. 2008](#)), both with the same parameters chosen to represent a typical wGb star in our sample ( $T_{\text{eff}} = 5000$  K,  $\log g = 2.5$  dex,  $[\text{Fe}/\text{H}] = 0$  dex), one with standard (e.g. solar) C and N composition ( $[\text{C}/\text{H}] = 0.0$  dex,  $[\text{N}/\text{H}] = 0.0$  dex) and the other with the composition of a wGb star ( $[\text{C}/\text{H}] = -1.30$  dex,  $[\text{N}/\text{H}] = +1.20$  dex).

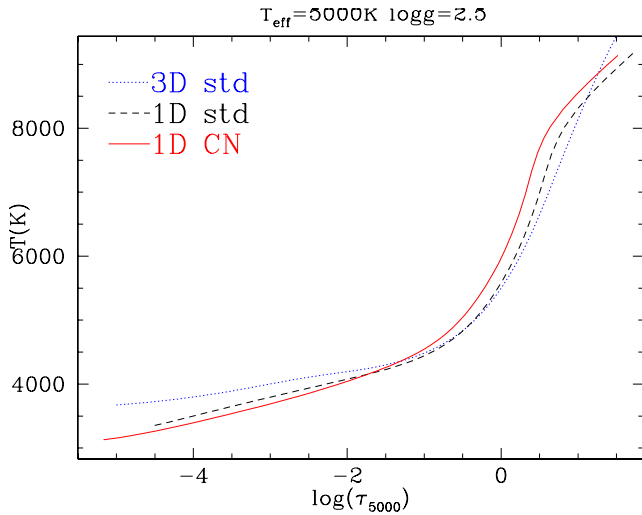
Figure 4 shows the difference in the thermal structure between the two models. While in the outer layers (at small optical depths) the CN-specific model is slightly cooler than the standard composition model, the inner part is warmer at the continuum formation level.

Because the atmosphere structure is significantly affected, one can also expect that the spectral energy distribution and the photometric magnitudes will also be modified. In Fig. 5, we show the difference in magnitude obtained with CN-specific models compared to standard composition models with  $T_{\text{eff}} = 5000$  K and 4500 K. Not surprisingly, the differences are larger for the B and V-bands because this is where most of the C-based

**Table 5.** Comparison of atmospheric parameters and abundances derived for wGb stars common to our sample and that of AL13.

HD No.	$\Delta(T)$ (K)	$\Delta(\log g)$ (dex)	$\Delta([\text{Fe}/\text{H}])$	$\Delta([\text{C}/\text{H}])$	$\Delta([\text{N}/\text{H}])$	$\Delta([\text{O}/\text{H}])$
HD 18474	238	0.5	0.19	0.30	0.27	0.38
HD 49960	170	0.2	0.08	0.16	-0.02	0.16
HD 67728	197	1.1	0.22	0.40	0.41	0.64
HD 78146	54	0.0	-0.19	-0.26	0.16	-0.14
HD 82595	115	-0.2	-0.05	-0.25	0.06	-0.16
HD 94956	166	0.3	0.09	0.19	-0.02	0.08
HD 120170	237	0.4	0.27	0.26	0.20	0.21
HD 146116	120	-0.1	0.01	0.35	-0.07	-0.03
HD 165462	123	0.0	0.02	0.03	0.30	-0.11
HD 165634	154	0.1	0.09	0.06	0.22	0.12
HD 166208	97	0.2	-0.13	0.02	0.51	-0.07
HD 204046	64	0.0	-0.06	-0.08	-0.03	-0.01
HD 207774	100	0.2	0.08	-0.03	0.14	0.01

**Notes.** In this table  $\Delta(T) = T_{\text{thiswork}} - T_{\text{Adamczak}}$  and  $\Delta([\text{X}/\text{H}]) = [\text{X}/\text{H}]_{\text{thiswork}} - [\text{X}/\text{H}]_{\text{Adamczak}}$ .



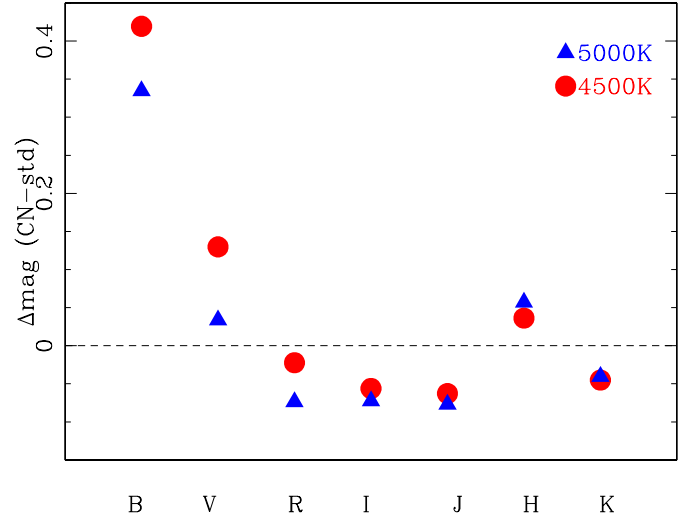
**Fig. 4.** Thermal structure comparison between a standard composition model atmosphere and a model with depleted C and enhanced N. A standard composition 3D horizontal average model is also displayed (Magic et al. 2013).

and N-based molecules are the most prominent. The typical differences in colours are  $\Delta(B - V) = +0.3$ ,  $\Delta(V - I) = +0.1$ , and  $\Delta(V - K) = +0.1$ , which translate in an increase of the photometric effective temperature of 400 K, 200 K, and 100 K, respectively, when accounting for the CN peculiar abundances in the model atmosphere computation. This is consistent with the values expected from the thermal structure.

For the spectroscopic temperature, we were also able to evaluate the difference in stellar parameters obtained with both kinds of models by measuring the change in the excitation trend and the change in ionisation balance for HD 56438. We obtained an increase of 150 K and 0.5 dex for  $T_{\text{eff}}$  and  $\log g$  when using the proper CN model. The change in  $\log g$  implies a decrease in the luminosity of  $-0.5$  in  $\log$  scale (see Eq. (1)).

Accounting for the peculiar abundances of wGb stars when performing the spectral synthesis would generally lead to identifying the wGb stars as less evolved and less massive stars.

Using a chemically dedicated model atmosphere to analyse wGb stars affects positively the effective temperature derived by photometry and by spectroscopy (but not necessarily by the

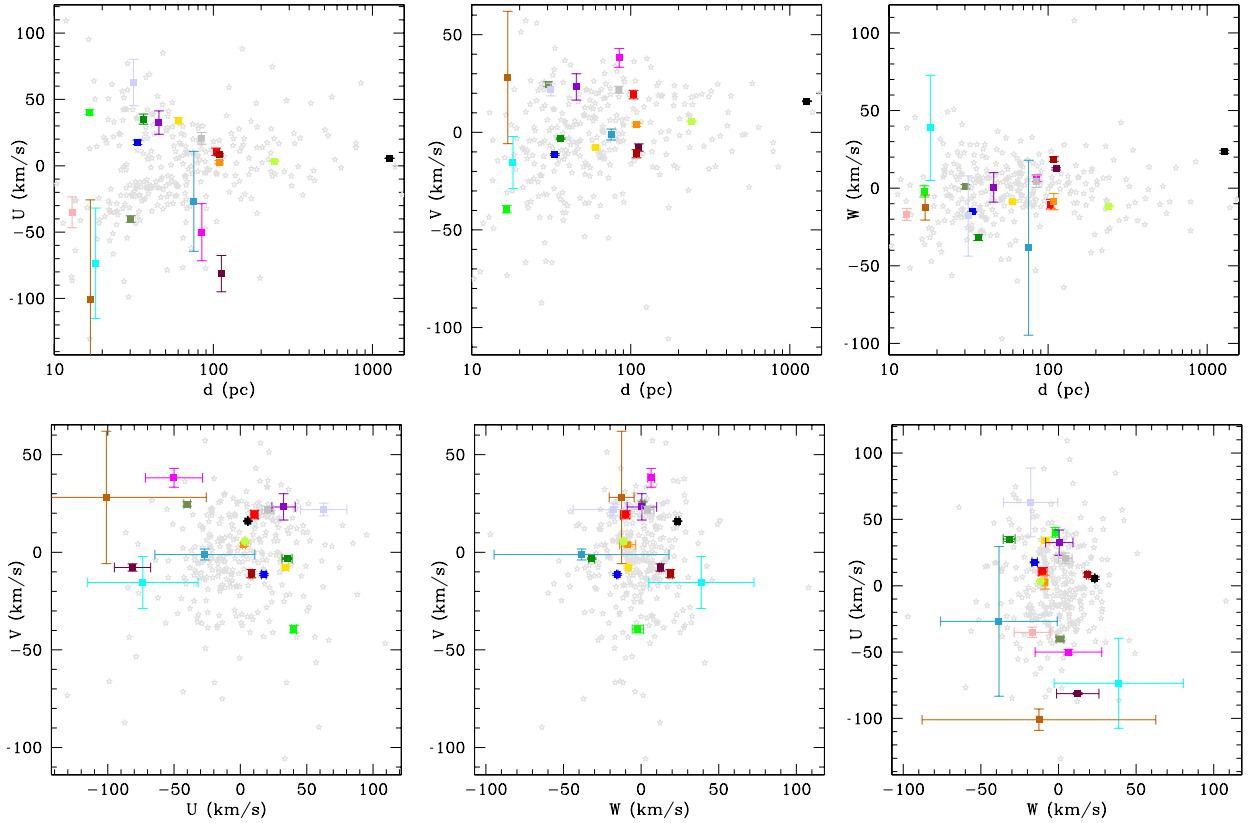


**Fig. 5.** Difference in magnitude of the Johnson filters when using CN-specific models and standard composition model.

same amount). However, we cannot claim straightforwardly that this effect would conciliate the discrepancy in the parameters observed because this would require a fully consistent analysis for the whole sample with a complete grid of dedicated model atmospheres.

In Table 4 (Col. 3) we report the difference in abundances according to the type of model atmospheres used. While it appears negligible for all the elements measured through atomic transitions, accounting for the CN peculiarity in the model atmosphere and spectra synthesis does affect the C and N abundances. Very interestingly, we note that the positive change in both C and N abundances indicates that wGb stars could actually be even more enhanced in C+N than is found based on solar scaled model atmospheres.

Despite the evidence that the chemical peculiarity of wGb stars has some impact on the parameters and the determination of the abundances, it is also important to simultaneously consider 3D effects on the structure of the atmosphere. Indeed, for similar stellar parameters, 3D models show non-negligible differences against 1D standard composition models (Fig. 4), but hydrodynamical models with both low C and high



**Fig. 6.** UVW positions for the sample stars (according to colour-coding in Table 1) and the Galactic red giants sample by Luck & Heiter (2007; grey stars in the background). The *upper row* gives the velocity components as a function of the distance to the Sun and the *lower row* shows the velocity components plotted against each other.

N composition do not exist at the moment, and thus we are currently bound to 1D standard composition models.

However, we emphasize that the overall change in parameters with appropriate C and N opacities, as we demonstrate in this section, suggests that wGb stars are probably hotter and with a higher surface gravity, which implies that they could be even less evolved than we infer in Sect. 5.

#### 4. Dynamical analysis of the sample

In order to complete our study, we analysed the kinematics of wGb stars in our sample. To this end, we calculated the Galactic space velocity components ( $U$ ,  $V$ , and  $W$ ) given the radial velocities derived from our data and the proper motions and parallaxes according to van Leeuwen (2007). We use a right-handed coordinate system for  $U$ ,  $V$ , and  $W$  so that they are positive in the direction of the Galactic center, Galactic rotation, and the north Galactic pole respectively (Johnson & Soderblom 1987). We corrected for a solar motion of  $(U_{\odot}, V_{\odot}, W_{\odot}) = (8.5; 13.38; 6.49) \text{ km s}^{-1}$  (Coşkunoğlu et al. 2011).

The uncertainties associated with the space-velocity components are obtained from the observational quantities and their errorbars after the prescription of Johnson & Soderblom (1987). The points bearing the largest uncertainties are those for which the parallax is the most uncertain. In order to provide a point of comparison, we applied the same procedure to the red giant stars sample of Luck & Heiter (2007) to which AL13 also compared their work.

The results are shown in Fig. 6. The kinematics of the wGb stars in our sample do not follow any specific trend and

do not differ from those of normal red giant stars in the Galaxy. In this way we exclude the possibility that the chemical peculiarities of these stars originate from a common birth place and kinematic history.

#### 5. Comparison to stellar evolution models

Following a similar approach to the one we used in Palacios et al. (2012), we have used the STAREVOL v3.30 stellar evolution code to compute grids of dedicated models to analyse the data described here. The reader is referred to Siess (2006), Decressin et al. (2009) for a full description of the standard and non-standard physics of the STAREVOL code used to compute these grids.

Consistently with the model atmospheres and spectral synthesis, we have used the Asplund et al. (2005) values as a reference for the solar chemical composition. Unless specified otherwise, the adopted value for the heavy elements mass fraction is 0.012294 with  $\alpha_{\text{MLT}} = 1.6014$  as obtained by the calibration of a solar model. The different grids computed are described in Table 6. In addition to a grid of standard models at solar metallicity (labelled S in Table 6), in which we considered an overshoot (at the edges of all convective regions) of  $0.1 H_p$ , we computed three grids dedicated to the wGb stars problem. First, we computed a standard grid with  $[\text{Fe}/\text{H}] = -0.25$  (labelled SIZ in Table 6) in order to explore the impact on the mass and evolutionary status that can be assigned to the wGb stars in our sample considering that most of them are slightly iron poor. We used the same amount of overshooting as for the solar metallicity models.



**Table 6.** Grids of dedicated stellar evolution models computed from the pre-main sequence (PMS) to the early-AGB stage.

Type	$\langle v_{\text{ZAMS}} \rangle$ km s <sup>-1</sup>	$M$ ( $M_{\odot}$ )	$Z$	[C/Fe] <sub>ini</sub> (dex)	[N/Fe] <sub>ini</sub> (dex)	[O/Fe] <sub>ini</sub> (dex)	[Na/Fe] <sub>ini</sub> (dex)	Mixing
S	0	3.0–5.5	0.012294	0	0	0	0	overshoot $\alpha_{\text{ov}} = 0.1H_{\text{p}}$
SIZ	0	3.0–5.5	0.0070188	0	0	0	0	overshoot $\alpha_{\text{ov}} = 0.1H_{\text{p}}$
CNO	0	3.0–5.5	0.025824	-1.218	1.295	0.238	0.370	overshoot $\alpha_{\text{ov}} = 0.1H_{\text{p}}$
RotCNO	25	3.5; 3.8	0.0070188	-1.218	1.295	0.238	0.370	overshoot $\alpha_{\text{ov}} = 0.1H_{\text{p}}$
								rot. mix. <a href="#">Maeder &amp; Zahn (1998)</a>
SlowRot	25	3.0–5.5	0.012294	0	0	0	0	overshoot $\alpha_{\text{ov}} = 0.1H_{\text{p}}$
								rot. mix. <a href="#">Maeder &amp; Zahn (1998)</a>
FastRot	180	3.0; 3.5	0.012294	0	0	0	0	overshoot $\alpha_{\text{ov}} = 0.1H_{\text{p}}$
								rot. mix. <a href="#">Maeder &amp; Zahn (1998)</a>

**Notes.** All models are computed using [Asplund et al. \(2005\)](#) as a reference for the solar abundances mixture ( $Z_{\odot} = 0.012294$ ).

Assuming that the CNO abundances determined for the wGb stars in our sample could have an extrinsic origin, we also computed a grid setting the initial abundances of these nuclides to the mean value of our observed sample (see Table 6, row labelled CNO).

As in [Palacios et al. \(2012\)](#), we also computed models including rotation. We know from [Palacios et al. \(2012\)](#), [Adamczak & Lambert \(2013\)](#) that wGb stars have an initial mass between 3 and 5  $M_{\odot}$ , which means that their progenitors were late B-type stars on the main sequence. Following the results of [Zorec & Royer \(2012\)](#), we computed a series of models in this mass range with an initial slow rotation of  $v_{\text{ZAMS}} = 25$  km s<sup>-1</sup>, which is representative of 5% of late B-type stars. These models are referred to as SlowRot in Table 6 and their surface rotation velocity at the Zero Age Main Sequence (ZAMS) is given in Col. 2. Two models at 3.5 and 3.8  $M_{\odot}$  were computed using the same initial CNO abundances as in the CNO models but with [Fe/H] = -0.25 dex and  $v_{\text{ZAMS}} = 25$  km s<sup>-1</sup>, which we label RotCNO. The bulk of late B-type stars have a mean rotation velocity of about 220 km s<sup>-1</sup> on the main sequence, and we computed a few models ( $M = 3.0, 3.5 M_{\odot}$ ) of fast rotators in order to indicate the level of abundance variations expected in that case. They are referred to as FastRot in Table 6 and are discussed in Sect. 5.2.

We include rotation through its modification of the gravitational potential by the centrifugal force (following the [Endal & Sofia 1976](#) formalism) and via the transport of angular momentum and nuclides that it generates. We use the [Maeder & Zahn \(1998\)](#) formalism where the transport of angular momentum is modelled by an advection-diffusion equation. Meridional circulation, turbulent shear, and winds are the processes transporting both angular momentum and nuclides. We use the [Zahn \(1992\)](#) and [Talon & Zahn \(1997\)](#) prescriptions for the horizontal and vertical shear viscosities, respectively.

Mass loss is described according to [Reimers \(1975\)](#) using a parameter  $\eta_{\text{Reimers}} = 0.5$ .

### 5.1. Masses and evolutionary status

Using the standard grids at solar and subsolar metallicity we estimated the masses and radii for all the stars in our sample following the maximum likelihood method described in [Valle et al. \(2014\)](#). We based our estimates upon the  $T_{\text{eff}}$ ,  $\log g$ , and [Fe/H] and associated errorbars derived from our spectroscopic analysis. The derived values and associated  $1\sigma$  errors are given in Table 7. We note that the masses obtained when using modified ab initio CNO abundances should be larger by about 0.2  $M_{\odot}$ , since varying the C and N abundances while keeping the same

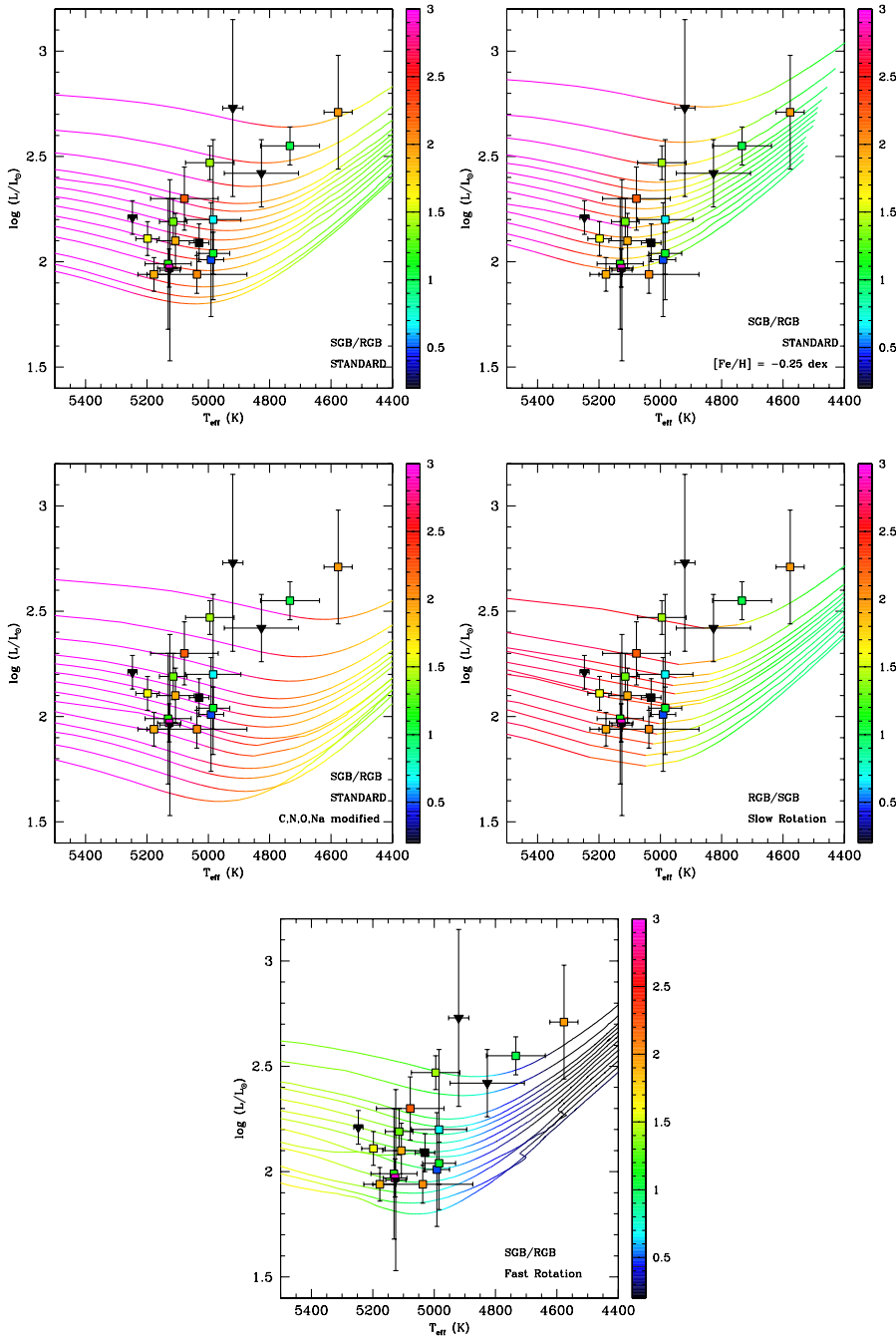
**Table 7.** Masses and radii of program stars.

HD No.	$M$ ( $M_{\odot}$ )	$\sigma$	$R$ ( $R_{\odot}$ )	$\sigma$
HD 18474	3.2	-0.2/+0.6	14.3	-3.0/+3.6
HD 49960	3.2	-0.2/+0.6	14.2	-2.4/+5.3
HD 56438	3.1	-0.1/+0.1	12.25	-1.15/+1.55
HD 67728	3.8	-0.65/+0.6	23.2	-9.1/+16.3
HD 78146	3.9	-0.5/+0.1	28.2	-6.1/+7.5
HD 82595	3.7	-0.2/+0.2	22.5	-2.1/+4.0
HD 91805	3.2	-0.1/+0.5	15.9	-3.4/+4.7
HD 94956	3.3	-0.3/+0.7	12.9	-6.1/+12
HD 102851	3.2	-0.15/+0.8	13.7	-4.7/+12.5
HD 119256	3.2	-0.2/+0.8	14.4	-3.9/+6
HD 120170	3.2	-0.2/+0.8	12.1	-1.9/+4.5
HD 120213	4.2	-1.2/+0.7	34.3	-14/+17.9
HD 124721	3.3	-0.2/+0.7	14.4	-3.7/+7.5
HD 146116	4.0	-0.7/+0.2	31.5	-6.7/+3.4
HD 165462	3.5	-0.4/+0.5	17.8	-5.8/+11.9
HD 165634	3.3	-0.2/+0.6	16.4	-5.4/+7.1
HD 166208	3.2	-0.2/+0.8	11.3	-1.1/+3.7
HD 204046	3.4	-0.3/+0.8	16.4	-7.5/+17.8
HD 207774	3.4	-0.4/+0.6	13.2	-6.5/+13.8

iron content leads to an overall increase in the metallicity and thus to a shift towards redder less luminous tracks at a given mass. They still remain in good agreement with the values listed in Table 7 within the  $1\sigma$  errorbars.

For those stars common to both our sample and that of AL13, the errorbars and the mass domain that we derive are smaller. This is due to a combination of the difference of our  $T_{\text{eff}}$  by  $\approx 140$  K and the use of different stellar evolution models and methods to derive the masses. A striking example of the differences that we find is the star HD 120170. [Adamczak & Lambert \(2013\)](#) list it as a 0.6  $M_{\odot}$  star, while we identify it as a 3.2  $M_{\odot}$  in good agreement with its temperature and gravity, which are inconsistent with a 0.6  $M_{\odot}$  track. For this specific star, the large uncertainty on the parallax deduced luminosity can be incriminated to explain the low value found by AL13.

Concerning the evolutionary status, the location of our sample stars in the HR diagram is not constraining as shown in Figs. 7 and 8. The temperature and luminosity of the stars are all compatible with a subgiant/red giant evolutionary status, whichever model is considered (Fig. 7). On the other hand, the extent of the blue loops (corresponding to the core He burning or clump phase) is very sensitive to the opacity in the outer layers of the models, and can be largely modified by a change in the chemical composition of these layers as illustrated in Fig. 8.



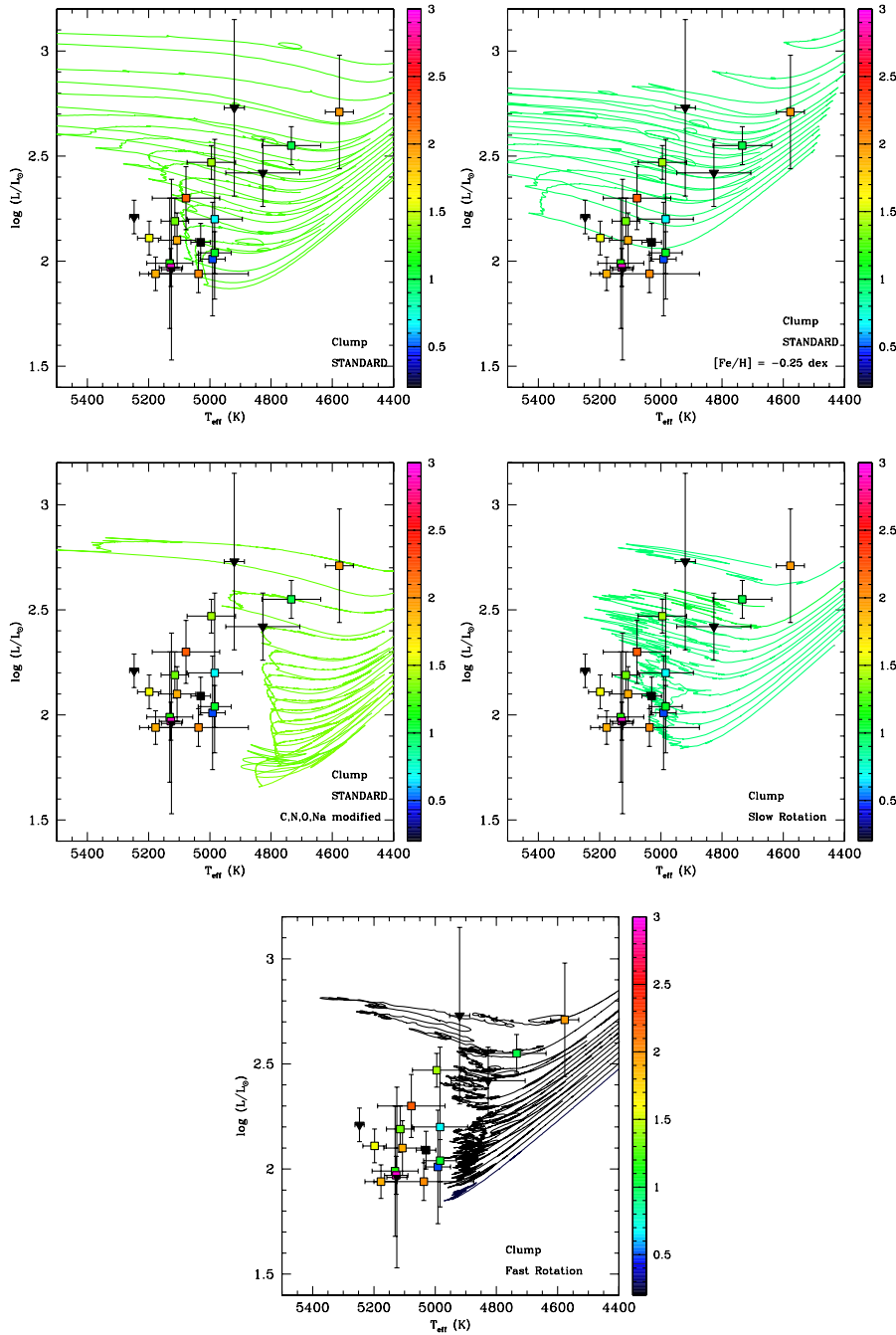
**Fig. 7.** Hertzsprung-Russell diagrams for the models of the different grids described in Table 6. Only the part of the tracks associated with the subgiant and red giant phases is plotted here. The colour code of the tracks indicates the surface abundance of lithium (see colour scale on plots). Our data points are overplotted with the same lithium abundance colour-coding used for the evolutionary tracks. The tracks correspond to models with initial masses between  $3 M_{\odot}$  (least luminous track) and  $5 M_{\odot}$  (most luminous track).

In particular the hotter and less luminous wGb stars in our sample are not compatible with a clump evolutionary status. The blue loops are much shorter in the rotating models (SlowRot and FastRot) and in the models with modified CNO abundances, and only four stars are compatible with a clump status from their location in the HR diagram when compared to the CNO and FastRot sets of models.

According to the discussion in Sect. 3.3, adopting the  $T_{\text{eff}}$  from AL13 for the stars common to our samples would shift most of the points towards the red in Figs. 7 and 8, making them more compatible with a clump status. On the other hand, adopting fundamental parameters derived from dedicated model atmospheres including the CN peculiarity of the wGb stars would shift most of the points towards the blue and would almost exclude a clump status.

As is clearly seen here, the location in the HR diagram alone cannot be conclusive in this particular region for intermediate-mass stars and there is a clear degeneracy between red giant and core He burning phases. Asteroseismology based on space photometry is to date the only method that can clearly disentangle stars from the clump and stars from the red giant branch (Bedding et al. 2011), but unfortunately none of the known wGb stars has been observed by the asteroseismic space missions yet.

In order to gain insight on the evolutionary status of wGb stars, other observational constraints can be added, such as lithium abundance. This dimension is added as a colour code both for the tracks and for the observational points in Figs. 7 and 8. It is clear from these figures that all stars with  $A(\text{Li}) > 1.3$  dex are not compatible with a post first dredge-up (1st DUP) completion status based on stellar evolution models predictions.



**Fig. 8.** Same as Fig. 7 for the part of the tracks associated with the core helium burning phase (clump).

The completion of the 1st DUP corresponds in Fig. 7 to the point with the highest temperature at which the lowest lithium abundance is reached in each of the tracks. About half of our sample presents such lithium abundances (9 out of 19). According to our computations, lowering the initial metallicity and/or introducing rotation leads to even lower lithium abundances at the 1st DUP completion and hence at the clump ( $A(\text{Li}) < 0.95$  dex), and there are even more wGb stars (12 out of 19 within the quoted error-bars) that exhibit more lithium at their surface than predicted by the models.

Rotational velocity may also be added to the information on temperature, luminosity, and surface lithium abundance to gain insight on the evolutionary status of wGb stars. However, the upper limits obtained on the surface velocities  $v \sin i$  for all but two of the wGb stars studied here are not restrictive enough to help

determine their evolutionary status. All our rotating models are compatible with  $v \sin i < 5 \text{ km s}^{-1}$  both during the Hertzsprung gap and at the clump as shown in Fig. 10.

From an evolutionary point of view, the time spent by a star at the clump (i.e. core He burning phase) is much longer than that spent in the Hertzsprung gap and low red giant branch (RGB) ( $\langle \Delta t \rangle_{\text{SGB/RGB}} \approx 1.1$  to  $3 \text{ Myr}$  vs.  $\langle \Delta t \rangle_{\text{clump}} \approx 14$  to  $155 \text{ Myr}$  in the mass range  $3$  to  $5 M_{\odot}$ , with lower durations associated with higher masses), which is usually an argument in favour of a clump status for stars for which the only constraint is the location in the area of the HR diagram where clump and subgiant/red giant tracks are intertwined.

In the specific case of the very rare wGb stars (less than 0.3% of the G-K giants), although no clear statement can be made, their rarity combined with their lithium content, rotational

velocities, and positions in the HR diagram seem to favour a mildly evolved status. A clump status is, however, not fully ruled out and could be attributed to at least four objects in our sample. If the wGb stars cross the Hertzsprung gap, important questions arise, in particular concerning the whereabouts of progenitors and the descendants of wGb stars, which we address in Sect. 6.

## 5.2. Nucleosynthesis and abundance patterns

The expected evolution of the surface abundances of lithium, carbon, and nitrogen as a function of the effective temperature predicted by the different models of intermediate-mass stars described in Table 6, is shown in Figs. 7, 8, and 11. In Fig. 11, the colours of the points are the ones listed in the last column of Table 6, and refer to each individual wGb star in our sample.

### Lithium

Lithium is easily destroyed by proton captures and its abundance decreases at the surface as soon as the base of the convective envelope is connected to regions where  $T \geq 2.5 \times 10^6$  K. In all our models this occurs during the 1st DUP with the deepening of the convective envelope. The lithium abundance  $\log \varepsilon(\text{Li}) \equiv A_{\text{Li}}$  then decreases at the surface by about 2 dex compared to the value at the turn-off, reaching  $A_{\text{Li}} \approx 1.2$  dex in standard models.

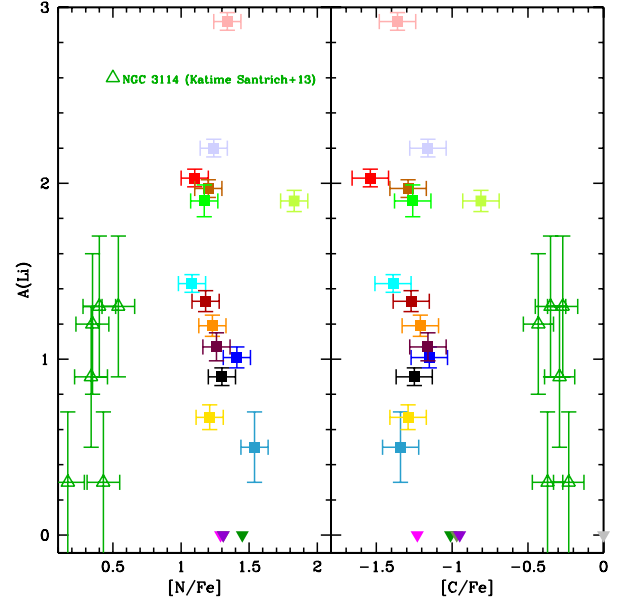
In rotating models, the surface lithium has already decreased during the main sequence owing to the efficient turbulent transport occurring in the radiative interior and connecting the base of the convective envelope to the inner regions where lithium is destroyed by proton captures. During the 1st DUP,  $A_{\text{Li}}$  also drops by 2 orders of magnitude, starting at the turn-off from initial values between 2.5 dex and 1.5 dex for  $v_{\text{ZAMS}}$  between 25 and 50  $\text{km s}^{-1}$ .

At least 9 out of the 19 wGb stars analysed here exhibit lithium abundances higher than the larger expected post DUP value of 1.2 dex. These stars are most probably young giants crossing the Hertzsprung gap with on-going 1st DUP. The remaining stars (10 out of 19) have lithium abundances between 0 and 1.2 dex that are consistent with 1st DUP dilution in rotating models, and thus compatible with both subgiant and clump status.

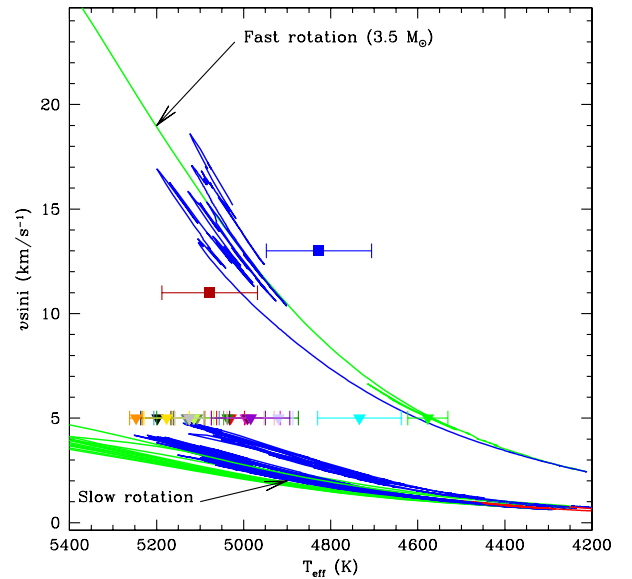
Figure 9 presents the lithium abundances as a function of the C and N abundances for the wGb stars and for intermediate-mass stars in the same range of  $T_{\text{eff}}$  and luminosities from the NGC 3144 young open cluster study by Santrich et al. (2013). No correlation exists between the Li, C, and N abundances in wGb stars. On the other hand, the stars in NGC 3144 are all Li-poor, with abundances consistent with evolved rotating post-dredge up stars. Thus the wGb stars do not behave as their siblings from the NGC 3144 cluster, which have been shown by Santrich et al. (2013) to be similar to field counterparts as far as C and N abundances are concerned.

### Carbon

The carbon and nitrogen abundance patterns observed in wGb stars clearly indicate that the plasma is fully processed by the CN cycle. In stars in the mass range 3.2 to 4.2  $M_{\odot}$ , hydrogen burning essentially occurs via the CNO cycle in the core during the main sequence evolution and in the hydrogen burning shell (HBS) in the subsequent evolution. According to standard stellar evolution theory, the abundances of  $^{12}\text{C}$  and  $^{13}\text{C}$  are expected to vary at the stellar surface during the 1st DUP,



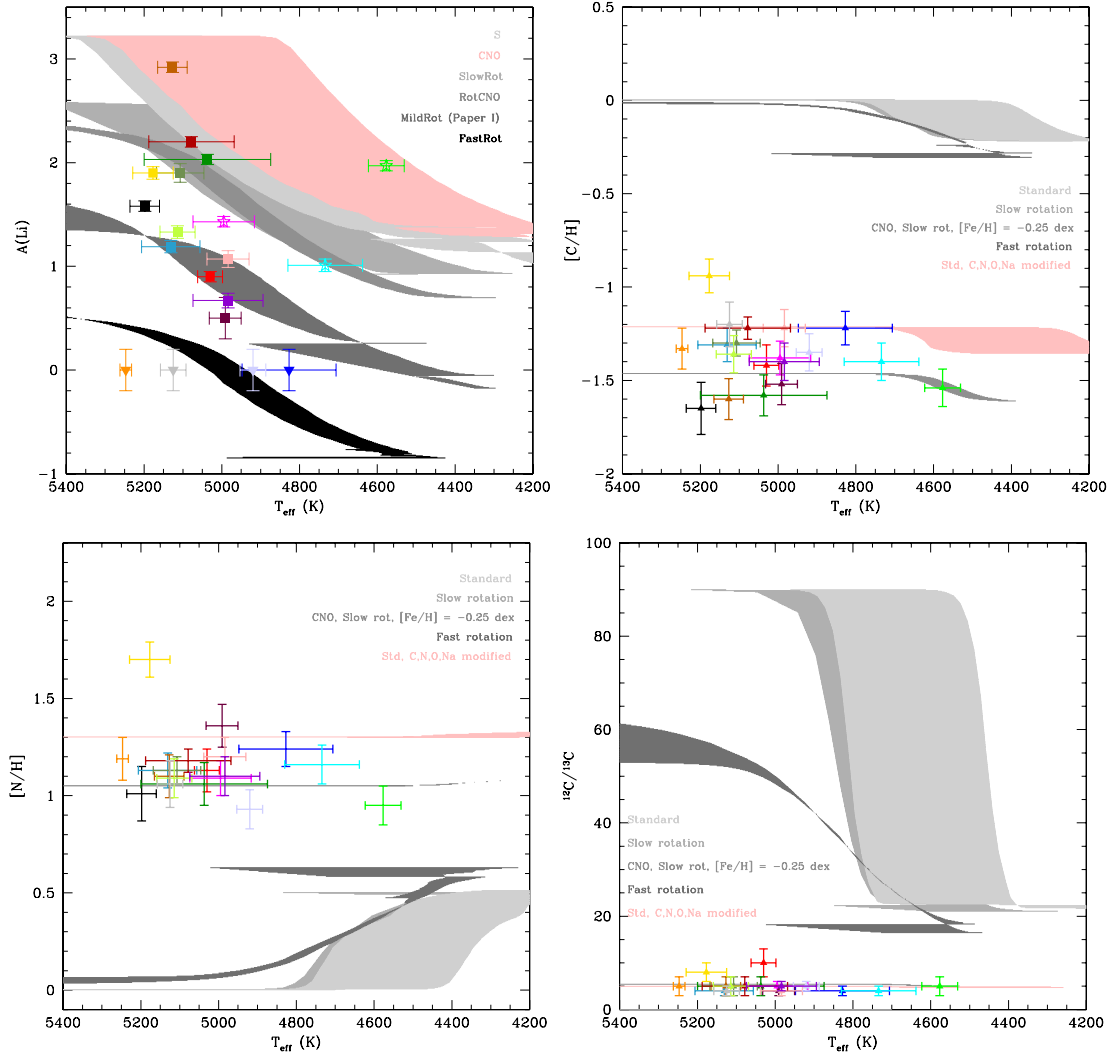
**Fig. 9.** Derived Li abundances as a function of  $[\text{N}/\text{Fe}]$  and  $[\text{C}/\text{Fe}]$  for the wGb stars in this study (coloured squares and inverted triangles according to the colour code in Table 1) and from the open cluster NGC 3144 after Santrich et al. (2013; green triangles).



**Fig. 10.**  $v \sin i$  as a function of temperature for our solar metallicity slow rotating models with masses from 3 to 5  $M_{\odot}$  and for a fast rotator of 3.5  $M_{\odot}$ . The colour of the data points refers to each individual wGb star in our sample as specified in Table 1. The colour of the tracks indicates the evolutionary phase: green for subgiant and RGB phases, blue for clump.

with a total decrease in  $[\text{C}/\text{H}]$  of 0.2 dex and in  $^{12}\text{C}/^{13}\text{C}$  from 90 to 20. Recently, Adamczak & Lambert (2014) have derived the carbon and oxygen abundances of a new sample of A-type stars across the Hertzsprung gap and confirm that no abundance anomaly develops during the evolutionary phase that connects the turn-off in the blue to the red giant branch in the red. Our non-rotating models are also consistent with this picture (see Fig. 11). For slowly rotating stars, the surface carbon abundances are expected to be slightly modified at the end of the main sequence, but the overall impact of rotation induced mixing in stars with  $v_{\text{ZAMS}} \approx 25 \text{ km s}^{-1}$  is negligible as can be seen in Fig. 11





**Fig. 11.**  $A(\text{Li})$ ,  $[\text{C}/\text{H}]$ ,  $[\text{N}/\text{H}]$ , and  $^{12}\text{C}/^{13}\text{C}$  as a function of temperature in wGb stars compared to different model predictions. The colours of the data points identify the stars as indicated in Table 1. The shaded areas correspond to the regions of these planes that should be populated with points according to the predictions of the different families of models computed here as labelled in Table 6. In the *upper left plot*, the MildRot (Paper I) label associated with the dark grey area indicates the predictions of rotating models with  $v_{\text{ZAMS}} = 50 \text{ km s}^{-1}$  computed and presented in Palacios et al. (2012).

(the difference between the areas in the two lighter shades of grey). For rapid rotators on the ZAMS, despite the larger turbulent shear mixing triggered by the larger angular velocity, the transport is not efficient enough to significantly decrease the surface carbon abundance prior to the 1st DUP as was shown in Palacios et al. (2012), and as can be seen from the black shaded area in Fig. 11.

Our rotating models include the same physical processes and the same treatment as those proposed by Charbonnel & Lagarde (2010) to explain the Li and C underabundances and the N overabundances observed in lower-mass RGB stars of the Galactic field and of globular clusters. In solar metallicity intermediate-mass stars, the rotational mixing is not very efficient and the lowest predicted values of  $[\text{C}/\text{H}] \approx -0.3$  dex and  $^{12}\text{C}/^{13}\text{C} \approx 20$  for stars past the 1st DUP are far from the mean values  $\langle [\text{C}/\text{Fe}] \rangle \approx -1.2$  dex and  $\langle ^{12}\text{C}/^{13}\text{C} \rangle \approx 4$  encountered in the wGb stars.

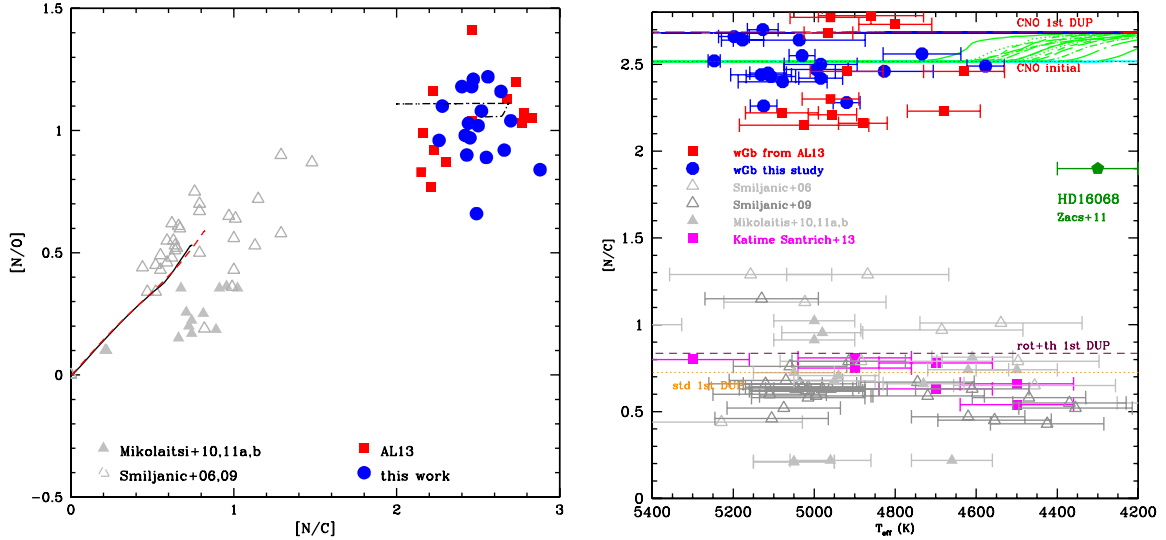
### Nitrogen

According to standard stellar evolution theory, the abundances of  $^{14}\text{N}$  is expected to vary at the stellar surface during the 1st DUP

with a global increase of  $[\text{N}/\text{H}]$  by 0.5 dex. This prediction is met by our models and are not modified if wGb stars were slow rotators at the ZAMS as shown in the lower left panel of Fig. 11. For rapid rotators on the ZAMS, the larger turbulent shear mixing allows a higher enrichment of the surface with nitrogen and a post-dredge-up value of about 0.6 dex (see the dark grey shaded area in Fig. 11).

As in the case of carbon, the maximum overabundance reached in our models is much smaller than the mean value of  $\langle [\text{N}/\text{Fe}] \rangle \approx +1.3$  dex derived for the wGb stars.

Figure 12 compares the CNO abundances in wGb stars and in other intermediate-mass giants of similar metallicities in the form of the  $[\text{N}/\text{C}]$  ratio. The very large anti-correlated nitrogen overabundances and carbon underabundances in the wGb giants places them in exclusive regions of the  $[\text{N}/\text{O}]$  vs.  $[\text{N}/\text{C}]$  and  $[\text{N}/\text{C}]$  vs.  $T_{\text{eff}}$  planes compared to other giants in the field and in young open clusters, sharing the same spectral type and luminosity class. Unlike other intermediate-mass stars found in young open clusters, models including rotational and thermohaline mixing cannot account for the observed abundances.



**Fig. 12.** C, N, and O in the wGb stars and other intermediate-mass giants. *Left:* [N/O] as a function of [N/C] for the stars in our sample (blue dots) that are in common with AL13 (red squares) compared with abundances in intermediate-mass stars of the field from Smiljanic et al. (2006), and of open clusters from Smiljanic et al. (2009; open grey triangles), Mikolaitis et al. (2010; 2011a,b; filled grey triangles), and Santrich et al. (2013; magenta filled squares). Also shown are the predictions from standard stellar evolution models of  $3 M_{\odot}$  and  $4 M_{\odot}$  including rotational and thermohaline mixing from Lagarde et al. (2012; solid black line and red dashed line in the lower left part of the plot) and from our CNO models (short-long-dashed line). *Right:* [N/C] as a function of temperature for the wGb stars and the same intermediate-mass red giants as on the left plot. An additional point, the giant HD 16068 from the solar metallicity open cluster Tr2, is also plotted after Zacs et al. (2011). The lines represent the expected post 1st DUP value of [N/C] predicted by our different models as labelled. For the CNO models we also show the main sequence value of this ratio.

We note that the differences between the temperatures we derived and those derived by AL13 for the subsample of wGb stars common to both our studies do not alter the peculiarity of wGb stars, which does not depend on their evolutionary status as far as C and N abundances are concerned.

### Heavier elements

When occurring at high temperatures, the NeNa-chain is associated with the CNO cycle. This chain is made of a series of nuclear reactions that lead to an overall increase in the number of  $^{23}\text{Na}$  nuclei at the expense of  $^{22}\text{Ne}$ . This increase occurs at constant number of  $^{16}\text{O}$  nuclei first, and then – when the temperature increases further – it is accompanied by a decrease in the number of  $^{16}\text{O}$  nuclei.

As the carbon and nitrogen abundance patterns observed at the surface of wGb stars indicate that their atmospheres have been processed through a hot CNO cycle, sodium and maybe oxygen anomalies should also be expected at their surface. As shown by AL13 and noted in Table 2, wGb stars are indeed mildly enhanced with sodium ( $\langle [\text{Na}/\text{Fe}] \rangle \approx 0.35$  dex) and have oxygen abundances in good agreement with other field stars.

The heavier elements are normal compared to similar giants. The abundances of O, Na, and heavier elements are thus fully consistent with those of C and N within the framework of the hot CN cycle, clearly indicating that the material exposed at the surface of the wGb stars has been nuclearly processed through the CNO cycle and the NeNa-chain.

We note that at such temperatures Li is already not expected to survive, and so – as pointed out in Palacios et al. (2012) – the presence of this light nuclide in the atmospheres of many of the wGb stars introduces a puzzling inconsistency in an otherwise very clear nuclear pattern.

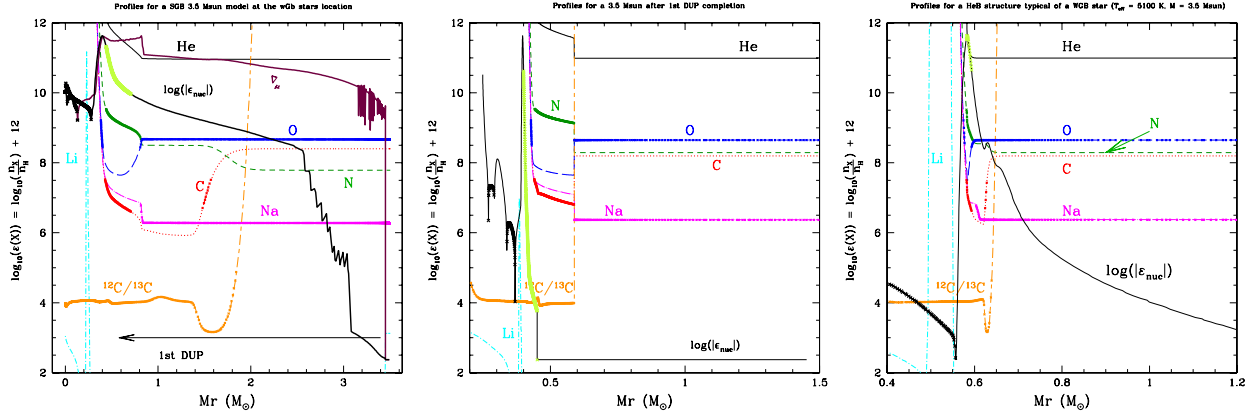
In Sect. 6, we examine the different ways such a nuclear pattern can be achieved in stellar atmospheres of evolved intermediate-mass stars.

## 6. Exploring the different scenarios

In the previous sections we provide a factual report on the fundamental parameters; on the abundances of Li, C, N, O, Sr, and Ba; and on the kinematics of the wGb stars in our sample. At first glance, our spectral and dynamical analysis indicates that

1. wGb stars have an initial mass between  $3.2$  and  $4.2 M_{\odot}$ . They are presently evolving either on the lower red giant branch or, less probably, on the red clump from progenitors on the main sequence that should have been late B- to early A-type stars;
2. the dynamical analysis of the wGb stars in our sample reveals no peculiar behaviour in terms of kinematics compared to the sample of normal giants by Luck & Heiter (2007);
3. almost 50% of the wGb in our sample exhibit more lithium at their surface than expected from 1st DUP dilution predictions, indicating either that it has been only mildly destroyed or that they have undergone some sort of enrichment. Almost a third of the stars have very low lithium abundances, that can be interpreted as either post DUP abundances of fast rotating stars or as the signature of pollution with lithium poor material;
4. the carbon, nitrogen, oxygen, and sodium abundances analysis clearly shows the presence at the surface of the wGb stars of matter that was fully processed through the CN cycle and the NeNa-chain;
5. the abundances of s-elements Sr and Ba reveal no specific enrichment that could be associated with pollution by more massive asymptotic giant branch (AGB) stars.

Taking these points into account, we explore here the self- and external pollution scenarios that might be considered to account for the chemical peculiarities of this specific class of stars.



**Fig. 13.** Abundance profiles in the standard  $3.5 M_{\odot}$  model at solar on the SGB at the location of wGb stars (*left*), at the completion of the 1st DUP (*center*), and in the clump at the location of wGb stars (*right*). The bold parts of the tracks correspond to the mean values derived for our sample of wGb stars. The bold black line represents the nuclear energy generation inside the star (the scale of which is not presented on the plot), and the lime-green bold part on this track represents the region where the surface C and N abundances of the wGb stars are encountered inside the model.

### 6.1. Self-enrichment

The self-enrichment scenario proposes that the abundance peculiarities observed at the surface of wGb stars result from internal mixing that brings to the surface the products of the CN cycle nucleosynthesis occurring in their deep interior. It is based on the fact that the abundances of the elements heavier than C at the surface of wGb stars indicate that the atmospheres of these stars have been processed by a hot CN cycle. The CN cycle is part of the CNO bi-cycle and its main characteristic is the anti-correlation of carbon and nitrogen abundances with low carbon abundance and high nitrogen. When occurring at equilibrium, the carbon isotopic ratio  $^{12}\text{C}/^{13}\text{C} \approx 4$ . This nuclear cycle occurs inside intermediate-mass stars in the mass range of the wGb stars, which lead AL13 to propose self-enrichment to explain the C and N abundances at their surface. In Fig. 13, we show the internal profiles of  $^4\text{He}$ ,  $^7\text{Li}$ ,  $^{12}\text{C}$ ,  $^{12}\text{C}/^{13}\text{C}$ ,  $^{14}\text{N}$ ,  $^{16}\text{O}$ , and  $^{23}\text{Na}$  as a function of the mass coordinate in our standard  $3.5 M_{\odot}$  model during the subgiant phase (left and middle panels) and the core helium burning phase (right panel). The bold parts of the tracks represent the domain of surface abundances of these nuclides derived for the wGb stars in our sample (and listed in bracket notation in Table 2). The nuclear energy profile is also plotted as a bold black line on each panel. In this figure, the left and the right panels correspond to the internal structure of a model with the luminosity and effective temperature within the domain covered by wGb stars, while the central panel shows the profiles at the completion of the 1st DUP.

The first thing to note is that the CNO cycle is actually operating with the expected amplitude inside the wGb stars. The second point is that the carbon and nitrogen surface abundances vary due to the 1st DUP, as shown in the middle panel presenting the profiles at the DUP completion. The flat parts of the profiles beyond  $\approx 0.6 M_{\odot}$  are within the convective envelope. The corresponding carbon and nitrogen abundances result from the deepening of the convective envelope in regions depleted (resp. enriched) in carbon (resp. nitrogen) shown on the left panel of the same figure. The surface abundances of N and C do not vary during the He burning phase (see right panel).

As can be seen in this figure, the region where the CNO cycle operates at full length has a small extent (in mass and radius) on the SGB and is even shallower if the star is at the clump. This region is deeply buried in the core and it is associated with the region where the peak of nuclear energy is produced. It is also fully depleted of lithium.

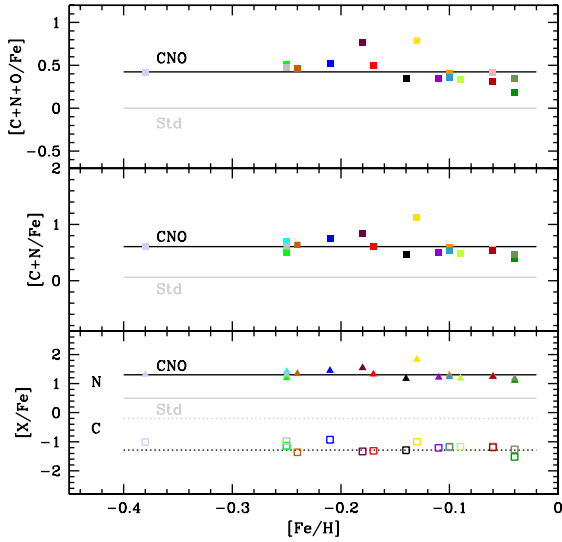
Assuming a self-enrichment scenario with an undefined cool bottom mixing process that would connect the convective envelope (its base located around the mass coordinate  $M_r \approx 3.45 M_{\odot}$  at the evolutionary stage shown in the left panel) to the region where the CNO cycle operates (at  $M_r \approx 0.7 M_{\odot}$ ) implies that there would be a physical mechanism able to overcome the large mean molecular weight barrier (shown as a merlot reddish brown bold line in the left panel of Fig. 13) associated with the HBS to reach the shells where the CNO cycle operates at full length, which is where the bulk of the nuclear energy sustaining the star is produced. Considering the distance between the base of the envelope and the hydrogen burning shell ( $\gg 15 R_{\odot}$ ), the mixing process should be very efficient, equivalent to a uniform diffusion coefficient of at least  $10^{16} \text{ cm}^2 \text{ s}^{-1}$ , which is larger than the mixing efficiency in convective regions. Such a transport process would also fully deplete the lithium in the envelope of the stars.

The rotational transport included in stellar evolution codes (meridional circulation + shear turbulence + thermohaline) is strongly limited by the mean molecular weight barriers and cannot reach the demanded efficiency.

In order to estimate the expected impact of the self-polluting process, we ran some test computations (not shown here) adding an ad hoc diffusion coefficient mimicking the specificities of the previously described cool bottom processing. The code becomes unstable and the result is a strong deviation from the evolutionary path owing to the mixing of the energy production region that affects the CNO cycle.

We conclude that the requirements of a very efficient and deep cool bottom processing that would process the surface shells through the CNO cycle while preserving a non-zero lithium abundance and a normal evolution of the star in the HR diagram cannot be met considering the present knowledge of mixing processes in stellar interiors. This conclusion is independent of the assumed evolutionary status of the wGb stars.

Finally, in our models (rotating and non-rotating), the sum  $[(\text{C}+\text{N}+\text{O})/\text{H}]$  is conserved along evolution and is equal to 0 (Fig. 14), well below the average value of about +0.5 dex derived for the wGb stars in our sample. To reach such a large increase (more than a factor of 3) would require the production of large amounts of primary  $^{14}\text{N}$  deep in the star and the transport of this primary nitrogen in the atmospheres of wGb stars together with the H-burning ashes. If the production of primary  $^{14}\text{N}$  can be achieved in intermediate-mass stars during He-burning phase, it requires extreme conditions (very low metallicity, fast rotation,



**Fig. 14.** Abundances of C, N, C+N, and C+N+O derived for the wGb stars in our sample as a function of metallicity. The predictions of the post 1st DUP values (i.e. at maximum variation) from our standard solar chemical composition models and from our CNO solar metallicity models are also shown as grey and black lines, respectively.

and advanced evolutionary status beyond the red clump) that are not met in wGb stars.

For these reasons, we conclude that the self-pollution scenario should not be considered as a valid option to account for the strong carbon deficiency (and nitrogen enrichment) observed at the surface of wGb stars. This conclusion is independent of any assumed evolutionary status for the wGb stars.

As already pointed out in Sect. 5.2 and in Palacios et al. (2012), the detection of lithium in the atmospheres of the wGb stars is incompatible with the amount of mixing that would be required to account for the C, N, and Na abundance patterns. It is interesting to note that the Li-rich wGb stars that would be past the 1st DUP completion are as puzzling as the more normal, yet very rare lithium-rich red giants. To date, no consistent model is able to explain lithium overabundances of red giants that have evolved beyond the 1st DUP (Gonzalez et al. 2009; Martell & Shetrone 2013; Cassisi et al. 2016).

## 6.2. Pollution

In the pollution scenario, the abundance pattern observed at the surface of the wGb stars results from the accretion of material processed in other objects (stars or planet-like objects) at an earlier epoch.

In close binary systems, the pollution can occur whenever mass overflows from a more evolved companion. In these cases the pollution concerns the outer layers only. If the primary is a low-mass main-sequence star with a convective envelope, the polluted material will be diluted in the surface convective region and should remain at its post-dilution level until a dredge-up event erases it by mixing the polluted layers with the internal pristine plasma. If the primary is an intermediate-mass or a massive star, then the outer layers are radiative and the polluted material that is accreted is not diluted. However, in these external layers, the nuclides are prone to atomic diffusion (gravitational settling and radiative levitation) and peculiar abundance patterns may develop. This is clearly shown by the wealth of chemically peculiar stars encountered among the A and B spectral type main-sequence objects.

Among the stars described in Table 1, only HD 166208 (observed with NARVAL in the northern hemisphere) is identified as a spectroscopic binary. HD 49960, HD 67728, and HD 91805 are reported as part of double systems in the Catalog of Components of Double and Multiple Stars (Dommanget & Nys 2002). The 14 other objects (73.6% of our sample) should be single stars. Considering this information, we cannot attribute the carbon and nitrogen abundance anomalies to binarity in the case of the wGb stars.

Pollution may also occur in non-binary systems via planet accretion during the red giant phases. This particular scenario of pollution was proposed by Siess & Livio (1999a,b) as a possible explanation for the existence of Li-rich giants on the upper RGB for solar-mass stars and the early-AGB for intermediate-mass stars. Carlberg et al. (2012) also studied the impact of planet accretion on the abundances and rotation of low-mass red giants and explain that planet accretion by red giant stars should lead to a noticeable increase in their rotation velocity due to the transfer of the planetary orbital momentum to that of the stellar envelope, and more importantly, to a light element replenishment, e.g. an increase in the surface lithium abundance and in the carbon isotopic ratio, and to an increase in the abundance of refractory elements.

The planet engulfing scenario is particularly appealing to account for high Li abundances in the Li-rich wGb stars, but it cannot account for the abundances of heavier nuclides (C and N anomalies and normal abundances from refractory nuclides as shown by AL13).

Another possibility for the pollution scenario is the ab initio pollution with material that has been processed through the CNO cycle. We have explored this scenario with the computation of the models labelled CNO and RotCNO in Table 6, assuming that the wGb stars were either formed or polluted while still fully convective on the pre-main sequence by material bearing the imprint of CNO cycle processing. These models are computed assuming initial abundances of C, N, O, and Na as indicated in Table 6. In this approach we do not specify the origin of the pollution and we keep a normal initial lithium abundance of 3.2 dex, not taking into account the fact that from a nucleosynthetic point of view, CNO cycle processed material should be devoid of lithium. As can be seen in Figs. 7 and 8, these models evolve as standard models that would have a higher metallicity. Although the iron content is maintained solar, the combination of the initial abundances chosen for C, N, O, and Na modify the total metal content and the heavy elements mass fraction  $Z$  is increased by a factor of 2 compared to the standard models (see Table 6). The major features of these models is thus to appear as lower mass models on the main sequence and Hertzsprung gap, and to evolve on short blue loops during the core helium burning phase. As discussed earlier, using these tracks to determine the masses of wGb stars leads to masses higher than those given in Table 7 by  $\approx 0.2 M_{\odot}$ . Concerning the evolution of lithium, their surface abundance is similar at all points to the standard value (see Figs. 7 and 8), so that similar models including rotation will lead to a good agreement between a location on the Hertzsprung gap, the lithium content, and the carbon and nitrogen abundances. As shown in Fig. 11, these models-designed to reproduce the carbon and nitrogen abundances-are the only ones able to reconcile all the observables. As expected by construction and as shown in Fig. 14, the surface abundance variation of CNO elements following the 1st DUP obtained in these models is in very good agreement with the values derived in the wGb stars in our sample.



### 6.3. Caveats of the pollution scenario

The pollution scenario as illustrated by the CNO and RotCNO models, faces the same weakness as the self-enrichment scenario when it comes to reconciling the surface abundances of Li-rich wGb stars and those of the CNO nuclides. In both cases the CNO pattern of wGb band stars is the result of CNO cycle nucleosynthesis occurring at high temperature where lithium is fully destroyed by proton captures in stellar interiors.

Assuming that the C and N abundance anomalies existing in wGb stars result from an initial/early pollution, two other major questions appear: (1) can we find earlier-type progenitors and successors of wGb stars? (2) what type of stars can produce the pollution we have identified?

- (1) Considering the masses of the wGb stars, they were early A-type to late B-type stars on the main sequence. Because such stars are devoided of a convective envelope and do not experience the same high rate of mass loss as the O-type stars many of them – if not all – are classified as chemically peculiar stars due to the combined action of hydrodynamical mixing processes and atomic diffusion (gravitational settling, radiative levitation) in their atmospheres and upper envelopes. The identification of potential progenitors to wGb stars is thus very difficult, and no clear evidence of dwarf stars exhibiting similar CNO abundance patterns to the wGb giants has been found.

Turning to the possible descendants of wGb stars, considering that a large part of the sample are evolving in the Hertzsprung gap, the wGb stars that are Li-poor and compatible with a clump evolutionary status would be their descendants. Indeed, the surface CNO abundance of wGb stars in the pollution scenario are already close to nuclear equilibrium on the main sequence, and will be very marginally affected by the 1st DUP. Therefore, we expect the descendants of wGb stars in the pollution scenario to share similar CNO abundances with their progenitors, but to exhibit lower lithium surface abundances as a consequence of the 1st DUP.

- (2) A review of the latest yields from stars more massive than  $4 M_{\odot}$  indicates that none is expected to eject matter processed through the CN cycle exclusively at the end of its evolution (Woosley & Weaver 1995; Forestini & Charbonnel 1997; Siess 2010; Chieffi & Limongi 2013; Pignatari et al. 2013; Karakas & Lattanzio 2014). The *massive* intermediate-mass stars and the massive stars evolve through He burning and beyond, and their final contribution to the enrichment of the interstellar medium bears the imprint of these nucleosynthetic processes that tend to erase the direct signature of H burning via the CNO cycle.

Another possibility could be that the wGb stars accreted matter from the winds of main sequence massive stars while they were still fully convective on the pre-main sequence. Such scenarios have been proposed at low metallicity to account for the abundance anomalies in globular cluster RGB stars (Prantzos & Charbonnel 2006). In the specific context of globular clusters, the slow equatorial winds of extremely fast-rotating low-metallicity massive stars is invoked, but there is no clear indication to date of the existence of such objects at solar metallicity. Martins et al. (2015) recently published a study of ON stars, which are main sequence O-type stars presenting a strong N enrichment, but they still fall short in terms of the amplitude of the anomalies, getting  $[N/C] \approx 2$  dex and  $[N/O] \approx 0.5$  dex, while the mean for the wGb stars is  $[N/C] \approx 2.5$  dex and  $[N/O] \approx 1$  dex (see Fig. 12).

## 7. Conclusions

Using high-resolution and high S/N spectra, we have analysed a sample of 19 wGb stars for which we derived the fundamental parameters, the metallicity, and the surface abundances of Li, C, N, O, and some heavy elements. Part of our sample was also analysed in AL13, and despite some systematic differences between the fundamental parameters derived in both studies that are discussed in the light of the differences in the spectral synthesis and model atmospheres used, we confirm the results of AL13 concerning the strong deficiency in carbon, a carbon isotopic ratio at nuclear equilibrium, and a strong enrichment in nitrogen for all the wGb stars in the sample. This proves the presence of CN-cycle processed material in their atmospheres as also pointed out by AL13. Based on a series of dedicated stellar evolution models, we find that wGb stars are most likely the descendants of early A- to late B-type stars, with initial masses between 3 and  $4.2 M_{\odot}$ . A large fraction of them could be presently undergoing the 1st DUP in the red part of the Hertzsprung gap; some stars in our sample are more compatible with a clump status. While the lithium abundances found cannot be qualified as anomalous since they reflect the normal evolution of rotational subgiant stars prone to rotational mixing, the carbon and nitrogen abundances remain puzzling. The carbon and nitrogen abundances are found to be fully compatible with the expected CNO cycle nucleosynthesis that also occurs within the wGb stars. However, we discard an internal origin for these abundance anomalies based on the argument that the nucleosynthesis region of interest is located very deep within the HBS, shielded by a high mean molecular weight gradient, and corresponds to the region where the peak of nuclear energy is produced. Any mixing in this region would result in an abnormal evolution and evolutionary path of the stars in the HR diagram, which is not supported by observations.

We have reviewed the possibilities of an external pollution, and are not able at present to put up a consistent scenario that would explain the overall abundance pattern of wGb stars. They could have been born polluted or have been polluted in their infancy (while fully convective) by more massive stars that would have ejected CNO cycle processed material. However, at the time of writing we cannot clearly identify the polluters nor fully reconcile the normal lithium evolution with a pollution with CN-cycle processed material that should be, by nature, devoid of lithium. Obtaining new measurements of Be for the wGb stars would add a valuable constraint and clarify the Li abundances with respect to the CNO.

Considering that little is known about the binary status of wGb stars in our sample, we have started a follow-up campaign on selected apparently single objects with the HERMES spectrograph on the Mercator Telescope in order to clearly establish their nature.

We suggest that further studies of more massive stars should be done in order to identify the possible polluters of wGb stars. A careful analysis of large surveys in search of new wGb stars would also be of great help.

*Acknowledgements.* The authors thank the anonymous referee for help in improving the overall quality of the paper. A.P. would like to thank O. Richard, F. Martins, and C. Charbonnel for fruitful and interesting discussions. We are also thankful to Caroline Soubiran and Rémi Cabanac for the observations of two stars at the Pic du Midi with the TBL telescope. Part of the work was done during MP's visiting professor position in IUCAA. M.P. is thankful to the director of IUCAA for his kind support. This research has made use of the SIMBAD database, operated at CDS (Strasbourg, France) and of NASA's Astrophysics Data System Service.

## References

- Adamczak, J., & Lambert, D. L. 2013, *ApJ*, **765**, 155
- Adamczak, J., & Lambert, D. L. 2014, *ApJ*, **791**, 58
- Alvarez, R., & Plez, B. 1998, *A&A*, **330**, 1109
- Asplund, M., Grevesse, N., & Sauval, A. J. 2005, in *Cosmic Abundances as Records of Stellar Evolution and Nucleosynthesis*, eds. T. G. Barnes, III, & F. N. Bash, *ASP Conf. Ser.*, **336**, 25
- Aurière, M. 2003, in *EAS Pub. Ser.* 9, eds. J. Arnaud, & N. Meunier, 105
- Bedding, T. R., Mosser, B., Huber, D., et al. 2011, *Nature*, **471**, 608
- Bidelman, W. P. 1951, *ApJ*, **113**, 304
- Bidelman, W. P., & MacConnell, D. J. 1973, *AJ*, **78**, 687
- Carlberg, J. K., Cunha, K., Smith, V. V., & Majewski, S. R. 2012, *ApJ*, **757**, 109
- Cassisi, S., Salaris, M., & Pietrinferni, A. 2016, *A&A*, **585**, A124
- Charbonnel, C., & Lagarde, N. 2010, *A&A*, **522**, A10
- Chieffi, A., & Limongi, M. 2013, *ApJ*, **764**, 21
- Coşkunoglu, B., Ak, S., Bilir, S., et al. 2011, *MNRAS*, **412**, 1237
- Cottrell, P. L., & Norris, J. 1978, *ApJ*, **221**, 893
- Day, R. W. 1980, Ph.D. Thesis, Texas Univ., Austin
- Decressin, T., Mathis, S., Palacios, A., et al. 2009, *A&A*, **495**, 271
- Dommanget, J., & Nys, O. 2002, *VizieR Online Data Catalog*: I/274
- Donati, J.-F., Semel, M., Carter, B. D., Rees, D. E., & Collier Cameron, A. 1997, *MNRAS*, **291**, 658
- Endal, A. S., & Sofia, S. 1976, *ApJ*, **210**, 184
- Forestini, M., & Charbonnel, C. 1997, *A&AS*, **123**, 241
- Gonzalez, O. A., Zoccali, M., Monaco, L., et al. 2009, *A&A*, **508**, 289
- Gustafsson, B., Edvardsson, B., Eriksson, K., et al. 2008, *A&A*, **486**, 951
- Idiart, T., & Thévenin, F. 2000, *ApJ*, **541**, 207
- Jofré, P., Heiter, U., Soubiran, C., et al. 2014, *A&A*, **564**, A133
- Johnson, D. R. H., & Soderblom, D. R. 1987, *AJ*, **93**, 864
- Karakas, A. I., & Lattanzio, J. C. 2014, *PASA*, **31**, 30
- Kaufer, A., & Pasquini, L. 1998, in *Optical Astronomical Instrumentation*, ed. S. D'Odorico, *SPIE Conf. Ser.*, **3355**, 844
- Lagarde, N., Decressin, T., Charbonnel, C., et al. 2012, *A&A*, **543**, A108
- Lambert, D. L., & Sawyer, S. R. 1984, *ApJ*, **283**, 192
- Luck, R. E., & Heiter, U. 2007, *AJ*, **133**, 2464
- Maeder, A., & Zahn, J.-P. 1998, *A&A*, **334**, 1000
- Magie, Z., Collet, R., Hayek, W., & Asplund, M. 2013, *A&A*, **560**, A8
- Martell, S. L., & Shetrone, M. D. 2013, *MNRAS*, **430**, 611
- Martins, F., Simón-Díaz, S., Palacios, A., et al. 2015, *A&A*, **578**, A109
- Masseron, T. 2006, Ph.D. Thesis, Observatoire de Paris, France
- Mikolaitis, Š., Tautvaišienė, G., Gratton, R., Bragaglia, A., & Carretta, E. 2010, *MNRAS*, **407**, 1866
- Mikolaitis, Š., Tautvaišienė, G., Gratton, R., Bragaglia, A., & Carretta, E. 2011a, *MNRAS*, **413**, 2199
- Mikolaitis, Š., Tautvaišienė, G., Gratton, R., Bragaglia, A., & Carretta, E. 2011b, *MNRAS*, **416**, 1092
- Palacios, A., Parthasarathy, M., Bharat Kumar, Y., & Jasiewicz, G. 2012, *A&A*, **538**, A68
- Parthasarathy, M., & Rao, N. K. 1980, *Ap&SS*, **73**, 251
- Parthasarathy, M., Sneden, C., & Bohm-Vitense, E. 1984, *PASP*, **96**, 44
- Pignatari, M., Herwig, F., Hirschi, R., et al. 2013, *ApJS*, submitted [[arXiv: 1307.6961](https://arxiv.org/abs/1307.6961)]
- Plez, B. 2012, *Turbospectrum*: Code for spectral synthesis, astrophysics Source Code Library
- Prantzos, N., & Charbonnel, C. 2006, *A&A*, **458**, 135
- Rao, N. K. 1978, *MNRAS*, **185**, 585
- Reimers, D. 1975, *Mem. Soc. Roy. Sci. Liège*, **8**, 369
- Santrich, O. J. K., Pereira, C. B., & Drake, N. A. 2013, *A&A*, **554**, A2
- Siess, L. 2006, *A&A*, **448**, 717
- Siess, L. 2010, *A&A*, **512**, A10
- Siess, L., & Livio, M. 1999a, *MNRAS*, **304**, 925
- Siess, L., & Livio, M. 1999b, *MNRAS*, **308**, 1133
- Smiljanic, R., Barbuy, B., de Medeiros, J. R., & Maeder, A. 2006, *A&A*, **449**, 655
- Smiljanic, R., Gauderon, R., North, P., et al. 2009, *A&A*, **502**, 267
- Sneden, C., & Pilachowski, C. A. 1984, *PASP*, **96**, 38
- Sneden, C., Lambert, D. L., Tomkin, J., & Peterson, R. C. 1978, *ApJ*, **222**, 585
- Talon, S., & Zahn, J.-P. 1997, *A&A*, **317**, 749
- Thévenin, F., & Idiart, T. P. 1999, *ApJ*, **521**, 753
- Valle, G., Dell'Omodarme, M., Prada Moroni, P. G., & Degl'Innocenti, S. 2014, *A&A*, **561**, A125
- van Leeuwen, F. 2007, *A&A*, **474**, 653
- Woolsey, S. E., & Weaver, T. A. 1995, *ApJS*, **101**, 181
- Zahn, J.-P. 1992, *A&A*, **265**, 115
- Začs, L., Alksnis, O., Barzdis, A., et al. 2011, *MNRAS*, **417**, 649
- Zorec, J., & Royer, F. 2012, *A&A*, **537**, A120

## Appendix A: Observations log

Table A.1. Observation log of the target stars observed in this paper.

Identifier	RA (2000)	Dec (2000)	V	Spectral type	Observatory	Date YYYY-MM-DD	TU HH:MM:SS	Exposure time (s)	SNR	RV (km s <sup>-1</sup> )
HD 18474	02 59 49.79190	+47 13 14.4814	5.50	G5:III...	TBL	2011-10-03	02:01:45	300	400	0.78
HD 49960	06 49 40.54488	-31 15 32.8492	8.35	K2/K3IIIp+...	ESO	2012-05-12	22:47:41	1800	260	55.07
HD 56438	07 14 36.40889	-47 08 05.8079	8.11	K1IIICNp...	ESO	2012-05-12	23:50:16	1800	300	-11.81
HD 67728	08 08 37.64968	-19 50 23.6865	7.54	G9III	ESO	2012-05-12	23:21:46	1500	360	9.19
HD 78146	09 05 44.21193	-28 04 59.4164	8.57	K1IIICNpv...	ESO	2012-05-14	00:33:56	2000	250	13.32
HD 82595	09 31 57.7825	-36 51 34.317	8.20	K2II/III	ESO	2012-05-13	01:27:59	2400	260	8.78
HD 91805	10 35 10.41242	-43 39 52.5170	6.11	G8II-IIICNpv	ESO	2012-05-14	03:42:23	300	320	8.89
HD 94956	10 57 23.99200	-29 16 50.7187	8.46	K0IIICNpv	ESO	2012-05-12	01:58:31	3600	420	-77.43
HD 102851	11 50 16.39738	-51 28 14.3231	8.79	K0/K1IIICNp...	ESO	2012-05-14	02:40:43	1500	340	-59.36
HD 119256	13 43 36.28093	-57 35 23.9100	7.33	K1IIICNp...	ESO	2012-05-13	03:04:14	1200	270	6.02
HD 120170	13 47 58.7904	-08 47 22.733	9.03	K0	ESO	2012-05-14	06:19:41	305	170	12.50
HD 120213	13 55 38.88086	-82 39 58.2768	5.96	K2.5III:p	ESO	2012-05-14	03:33:06	300	200	-32.97
HD 124721	14 16 24.5544	-45 11 23.125	9.48	K1/K2III:	ESO	2012-05-12	05:52:56	2400	240	-40.45
HD 146116	16 14 38.39564	-00 23 55.4940	7.70	G7III	ESO	2012-05-12	06:34:36	1800	330	31.83
HD 165462	18 06 07.42766	-00 26 46.0587	6.35	G8IIp	ESO	2012-05-14	05:26:46	300	340	-9.19
HD 165634	18 08 04.97982	-28 27 25.5316	4.57	G7:IIb	ESO	2012-05-14	03:51:11	100	100	-4.12
HD 166208	18 07 28.73963	+43 27 42.8438	5.01	G8IIICN...	TBL	2012-09-08	21:02:16	120	130	-16.63
HD 204046	21 26 54.12950	-33 54 35.6809	9.04	G9IIICNpv	ESO	2012-05-14	07:44:55	2400	320	22.02
HD 207774	21 51 33.58431	-07 24 14.2895	8.89	G5	ESO	2012-05-12	09:14:22	2400	280	11.92

**Notes.** Coordinates, V magnitude, and spectral types are from SIMBAD. TBL corresponds to the 2.0 m *Bernard Lyot* Telescope installed at the Pic du Midi (France), and ESO corresponds to the ESO 2.2 m telescope installed at La Silla (Chile). Accuracy on barycentric radial velocities (RV) is better than 0.07 km s<sup>-1</sup> for all stars.