



HAL
open science

Natural transformation occurs independently of the essential actin-like MreB cytoskeleton in *Legionella pneumophila*

Pierre-Alexandre Juan, Laetitia Attaiech, Xavier Charpentier

► **To cite this version:**

Pierre-Alexandre Juan, Laetitia Attaiech, Xavier Charpentier. Natural transformation occurs independently of the essential actin-like MreB cytoskeleton in *Legionella pneumophila*. *Scientific Reports*, 2015, 5, pp.16033. 10.1038/srep16033 . hal-02001317

HAL Id: hal-02001317

<https://hal.science/hal-02001317v1>

Submitted on 15 Oct 2024

HAL is a multi-disciplinary open access archive for the deposit and dissemination of scientific research documents, whether they are published or not. The documents may come from teaching and research institutions in France or abroad, or from public or private research centers.

L'archive ouverte pluridisciplinaire **HAL**, est destinée au dépôt et à la diffusion de documents scientifiques de niveau recherche, publiés ou non, émanant des établissements d'enseignement et de recherche français ou étrangers, des laboratoires publics ou privés.



Distributed under a Creative Commons Attribution 4.0 International License

SCIENTIFIC REPORTS



OPEN

Natural transformation occurs independently of the essential actin-like MreB cytoskeleton in *Legionella pneumophila*

Received: 14 August 2015
Accepted: 08 October 2015
Published: 03 November 2015

Pierre-Alexandre Juan^{1,2}, Laetitia Attaiech^{1,2} & Xavier Charpentier^{1,2}

Natural transformation is the process by which bacteria can actively take up and integrate exogenous DNA thereby providing a source of genetic diversity. Under specific growth conditions the coordinated expression of several genes – a situation referred to as “competence” – allows bacteria to assemble a highly processive and dedicated system that can import high molecular weight DNA. Within the cell these large imported DNA molecules are protected from degradation and brought to the chromosome for recombination. Here, we report elevated expression of *mreB* during competence in the Gram-negative pathogen *Legionella pneumophila*. Interestingly a similar observation had previously been reported in the distantly-related Gram-positive organism *Bacillus subtilis*. MreB is often viewed as the bacterial actin homolog contributing to bacterial morphogenesis by coordinating peptidoglycan-synthesising complexes. In addition MreB is increasingly found to be involved in a growing number of processes including chromosome segregation and motor-driven motility. Using genetic and pharmacological approaches, we examined the possible role of MreB during natural transformation in *L. pneumophila*. Our data show that natural transformation does not require MreB dynamics and exclude a direct role of MreB filaments in the transport of foreign DNA and its recombination in the chromosome.

Natural transformation is a major mechanism of horizontal gene transfer (HGT) and plays a leading role in bacterial genetic diversification¹. In contrast to other HGT mechanisms it is inherent to the species, i.e. directly encoded in the bacterial genome. Naturally transformable bacteria can enter a genetically programmed and often transient physiological state called competence in which they can take up exogenous DNA and integrate it in their chromosome^{2,3}. The state of competence mostly corresponds to the concerted expression of a multi-component DNA uptake system. Recent advances in the visualisation of the uptake system suggest a unified model between Gram-positive and Gram-negative bacteria^{4,5}. The system involves the assembly of a type IV pilus exposed at the cell surface and that crosses the outer membrane of Gram-negative bacteria through the PilQ secretin. In the periplasmic space, the ComEA protein binds double-stranded DNA⁶ which is then converted into single-stranded DNA (ssDNA) and transported across the inner membrane through a putative transmembrane channel formed by ComEC⁷. The cytoplasmic ssDNA is bound by the single-stranded DNA Binding proteins SsbB and DprA that protect it from nucleases and brought to the chromosome for integration^{8,9}.

Integration of the internalized ssDNA into the chromosome requires a core and conserved process, homologous recombination. While RecA is primarily involved in the maintenance of chromosome integrity it is also needed to recombine the internalised DNA with the chromosome through the interaction with the transformation-specific protein DprA⁸. In all transformable species *recA* is essential for transformation even when not part of the competence regulon, as for instance in *Haemophilus influenzae*^{10,11} and

¹CNRS UMR5240 MAP, Villeurbanne, France. ²Université Claude Bernard Lyon 1, Villeurbanne, France. Correspondence and requests for materials should be addressed to X.C. (email: xavier.charpentier@univ-lyon1.fr)

Vibrio cholerae^{4,12}. Moreover, the importance of its increased expression during competence development has been demonstrated in the transformable species *Streptococcus pneumoniae* and *Bacillus subtilis*^{13–15}. Although not an absolute rule, co-regulation can indicate a functional relationship and competence co-regulated genes may pinpoint fundamental processes on which cells rely for natural transformation.

DNA uptake depends on the proton motive force¹⁶ and the entropic forces associated with ComEA binding¹⁷ but the mechanism that guides the large imported DNA molecules, up to several tens of kilobases, to the nucleoid for recombination remains elusive¹⁸. While investigating regulation of competence in the Gram-negative human pathogen *Legionella pneumophila* we stumbled upon the observation that *mreB* is strongly induced during competence. Our data are consistent with the induction of *mreB* and its paralog *mbl* observed during competence in the distantly-related Gram-positive *Bacillus subtilis*¹⁹. MreB is a prominent member of the family of bacterial actins^{20,21}. MreB assembles into filaments located below the inner membrane and determines the shape of rod-shaped bacteria by coordinating the movement of peptidoglycan-synthesising enzymatic complexes^{22,23}. Although controversial^{24,25}, several studies have involved MreB dynamics in chromosome segregation^{26–30}. It is also well established that filaments of bacterial actin molecules can actively move extra-chromosomal DNA molecules within the cell to allow their effective partitioning in the daughter cells^{21,31}. The bacterial DNA uptake system is a composite system involving a surface-exposed type IV pilus and a membrane-associated complex that allows the import of DNA as a single-strand molecule^{3,32}. In *Pseudomonas aeruginosa* inactivation of MreB leads to mislocalisation of the type IV pilus retraction ATPase PilT³³ suggesting that MreB might also be important for the functioning of the transformation pilus. Taken together the data strongly suggested a direct role of MreB filaments at various stage of the transport of foreign DNA during the process of natural genetic transformation. This hypothesis has recently been tested in the Gram-positive organism *B. subtilis*³⁴. The data confirmed that *mreB* is induced during competence in *B. subtilis* and under control of the competence regulator ComK. MreB was found to interact with the ComGA ATPase of the DNA uptake system and this sequestration by ComGA was proposed to prevent cell elongation at the exit of competence³⁴. In contrast to ComGA which is required for natural transformation³⁵, MreB was found to play no role in natural transformation in *B. subtilis* as an *mreB* deletion mutant showed no defect in transformation efficiency. However, in this species, a potential involvement of the actin-like cytoskeleton in natural transformation may be obscured by the presence of two MreB paralogs (Mbl and MreBH) that can partly maintain cell growth and morphogenesis in absence of MreB³⁶.

In contrast to *B. subtilis*, examination of the *L. pneumophila* genome revealed a single *mreB* gene. We found the *L. pneumophila mreB* to be expressed during competence as part of an operon with *comEA*, a gene encoding a core component of the DNA uptake system. We investigated the mechanism of induction of *mreB* during competence in *L. pneumophila* and examined a possible role of MreB in natural transformation using genetic and pharmacological approaches. Our data suggest that the co-regulation of MreB and the DNA uptake system is coincidental and that natural transformation occurs without assistance of the MreB cytoskeleton.

Results

***mreB* is induced during competence as a bicistronic mRNA with *comEA*.** Competence for natural transformation in *L. pneumophila* has previously been reported during growth under microaerophilic conditions³⁷. Under standard growth conditions competence is otherwise repressed. In the *L. pneumophila* strains AA100 and JR32, mutations in the *proQ* and *comR* genes fully de-repressed competence and resulted in high levels of transformability^{38,39}. To gain further insight into how these genes repress competence we constructed markerless mutants of *proQ* and *comR* (respectively *lpp0148* and *lpp2773*) in the Paris strain by inserting a premature ochre codon (TAA) at position 11 (see Materials and Methods). As anticipated both *lpp0148_{TAA}* and *lpp2773_{TAA}* mutants were highly transformable with a typical transformation frequency of 1.10^{-4} including under conditions where the Paris wild-type strain is not transformable (transformation frequency $< 1.10^{-9}$) (data not shown). It was previously found that *comEA* is the most differentially expressed gene in the competent state³⁹. ComEA is a small periplasmic protein involved in the DNA uptake system and required for natural transformation of *L. pneumophila*³⁹. While analysing levels of the *comEA* transcript (450 nt) by Northern-blot we noticed an additional band corresponding to a larger transcript of about 1700 nucleotides (Fig. 1A). A similar band was actually visible in previously performed Northern-blot analysis of *comEA* in the kanamycin-resistant JR32 *proQ* and JR32 *comR* mutants (data not shown). An analysis of the *comEA* locus showed a small intergenic region (less than 200bp) between the coding sequences of *comEA* and *mreB* (Fig. 1B). The *mreB* gene is predicted to form an operon with *mreC* and *mreD*, but a readthrough bypassing the terminator of *comEA* was possible. To investigate this possibility, we designed a Northern-blot probe localized in the *mreB* gene. This probe revealed a transcript of identical size and expression pattern as the large transcript revealed with the *comEA* probe (Fig. 1A). The size of the transcript is consistent with a *comEA-mreB* bicistronic mRNA starting at the mapped *comEA* promoter and ending at a transcription terminator annotated at the end of *mreB* (Fig. 1B)⁴⁰. In contrast to the *lpp0148_{TAA}* mutant, the Paris wild-type strain is not naturally transformable when grown at 37°C. However, as seen by *comEA* expression (Fig. 1C), it naturally and transiently develops competence and becomes transformable (Fig. 1D) during late exponential growth when cultured at 30°C⁴¹. Under these conditions *comEA* is strongly induced when the culture reaches an optical density (OD 600 nm) of ~2.5 and a similar *comEA-mreB* mRNA is then also detectable,

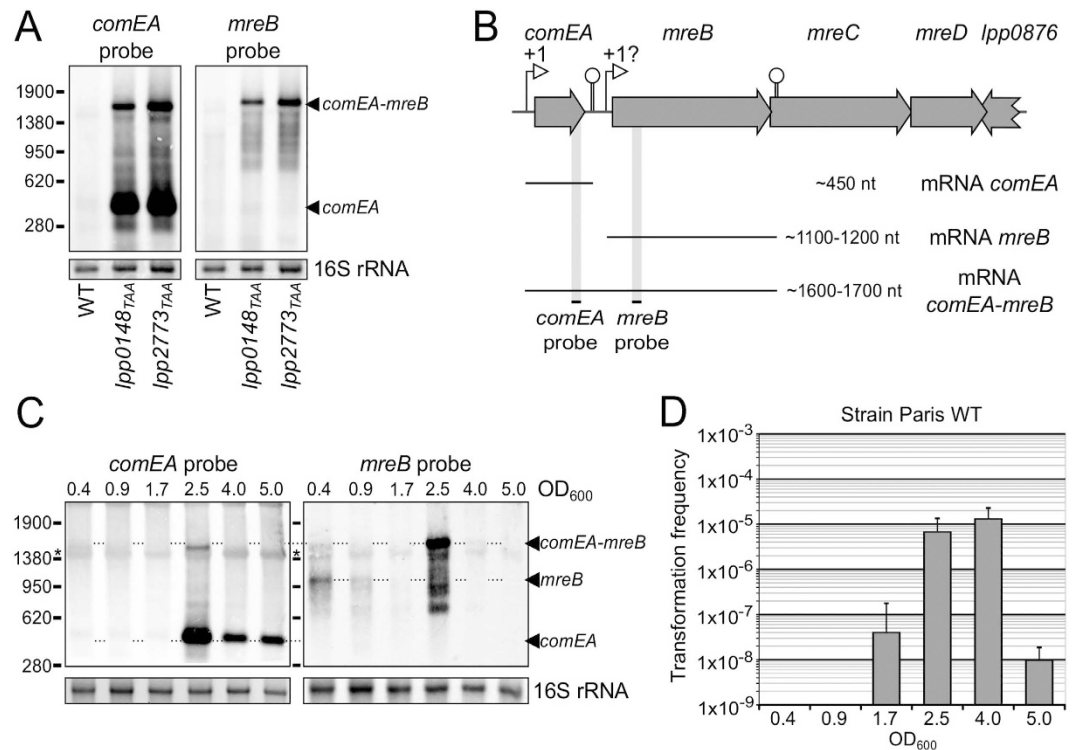


Figure 1. *mreB* is induced and expressed as a bicistronic mRNA during competence. (A) Northern-blot analyses of *comEA* and *mreB* expression in the Paris wild-type strain and in the constitutively competent mutants *lpp0148*_{TAA} and *lpp2773*_{TAA}. (B) Schematic representation of the *comEA-mreBCD* locus in the Paris wild-type strain. Experimentally determined and annotated promoters and terminators are indicated by an open arrow and a stem-loop structure, respectively. The interrogation mark above the promoter of *mreB* indicates that the transcription start site is not precisely known. The different mRNAs produced in this region are represented by thin lines and their sizes are indicated. The black dashes and shadows show the localisation of the probes used in Northern-blot experiments. (C) Northern-blot analyses of *comEA* and *mreB* expression in the Paris wild-type strain during growth at 30 °C. The optical density at 600 nm (OD₆₀₀) of the collected samples is indicated above the corresponding lanes. Ethidium-bromide staining of 16S ribosomal RNA was used to ensure that equal amounts of total RNA were loaded in each lane. The length in nucleotides and the position of the RNA ladder bands are shown on the left. The star (*) indicates non-specific binding of the Northern-blot probes on the abundant 16S rRNA transcript. (D) Determination of the transformation frequency in the Paris wild-type strain during growth at 30 °C. At different OD₆₀₀ during growth, bacteria were exposed to transforming DNA for 30 minutes and then plated on selective and non-selective media. The transformation frequency is the ratio of the number of CFUs counted on selective medium divided by the number of CFUs counted on non-selective medium. At OD₆₀₀ lower than 1.7, transformation frequency were below the detection limit (<1.10⁻⁹). Transformation experiments in the absence of DNA never gave rise to transformants or spontaneous resistant mutants.

thereby confirming the transcriptional readthrough between these two genes (Fig. 1C). Northern-blot for the *mreB* gene shows that *mreB* is expressed as a monocistronic mRNA of approximately 1100 nt in early growth phase (OD₆₀₀ = 0.4) and is then strongly induced to form a bicistronic mRNA when *comEA* is expressed (OD₆₀₀ = 2.5) (Fig. 1C). We conclude that the *comEA* and *mreB* genes form a bicistronic operon induced during competence development. Operon structures are often indicative of a functional relationship. Our data suggested that MreB could have a function connected to ComEA and thus might play a role in natural transformation.

MreB is essential in *Legionella pneumophila*. In order to test a possible role of MreB in natural transformation we sought to construct a deletion mutant by replacing the *mreB* gene with a kanamycin resistance gene in the constitutively transformable *lpp0148*_{TAA} mutant. Repeated attempts failed to produce kanamycin-resistant transformants. As *mreB* had been found to be essential in different rod-shaped bacteria such as *B. subtilis*, *Escherichia coli* and *Caulobacter crescentus*, we thought that it could also be the case in *L. pneumophila*^{42–44}. We thus constructed a conditional mutant of *mreB* by replacing its promoter by a synthetic IPTG-inducible promoter (IPTG = Isopropyl β-D-1-thiogalactopyranoside) at the natural chromosomal locus of the constitutively transformable *lpp0148*_{TAA} strain (Fig. 2A). The resulting

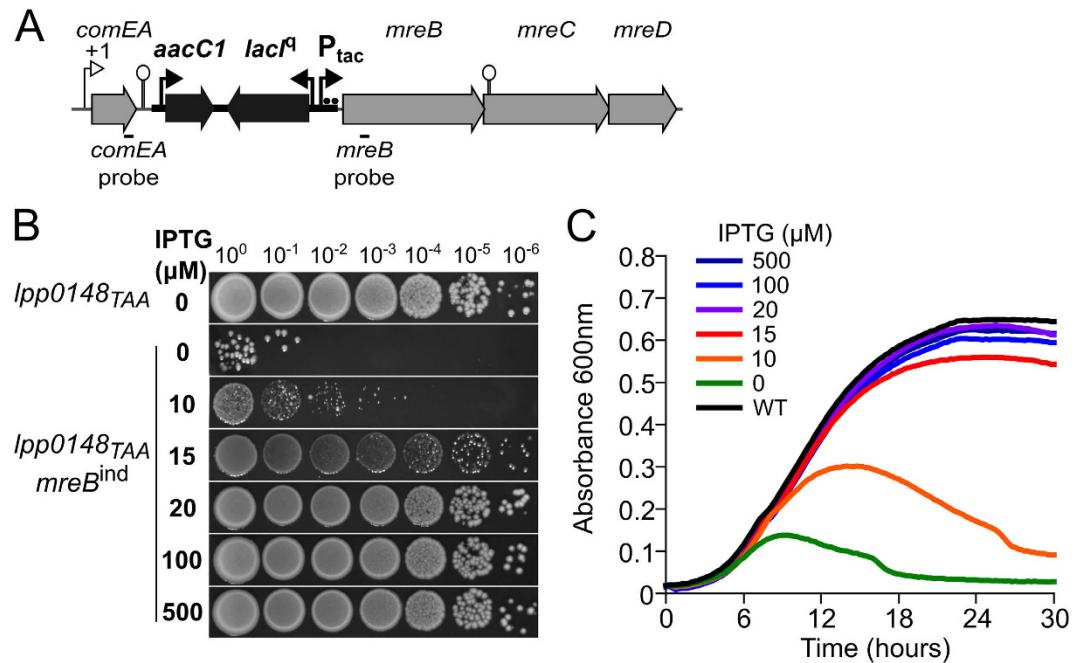


Figure 2. *mreB* is essential in *L. pneumophila*. (A) Schematic representation of the inducible allele of *mreB*. A synthetic DNA sequence carrying the gentamicin resistance gene *aacC1*, the *lacI^q* gene (large black arrows) and a synthetic promoter with two LacO sites (black arrow and black dots) was inserted between the *comEA* gene and the *mreBCD* locus (large grey arrows). (B) Plating of ten-fold serial dilutions of the *lpp0148_{TAA} mreB^{ind}* strain on CYE plates containing different amount of IPTG. (C) Growth curve of the *lpp0148_{TAA} mreB^{ind}* strain in AYE in the presence of various concentration of IPTG. The culture was initiated with the *lpp0148_{TAA} mreB^{ind}* strain previously grown on a CYE plate with 20 μ M of IPTG and resuspended in warm medium (starting OD₆₀₀ = 0.1). Absorbance of the culture was monitored at 600 nm every 15 min with intermittent shaking in a 96-well plate reader.

inducible *mreB* allele will be referred to as *mreB^{ind}*. In the presence of IPTG the *lpp0148_{TAA} mreB^{ind}* strain was able to form colonies on CYE plates. Consistent with the low levels of *mreB* transcription in the Paris wild-type strain, low concentrations of IPTG down to 20 μ M allowed normal growth (Fig. 2B). At 15 μ M of IPTG, the *lpp0148_{TAA} mreB^{ind}* strain could not form normal size colonies and lower concentration could not support normal growth. In the absence of IPTG, revertants that escaped LacI^q repression were obtained at a frequency of $\sim 1 \cdot 10^{-6}$ (Fig. 2B). Similar results were obtained in liquid culture. The *lpp0148_{TAA} mreB^{ind}* strain was grown on an IPTG-containing plate and inoculated in AYE broth with various concentration of IPTG (Fig. 2C). In the absence of IPTG, the culture started to grow presumably because the cells could rely on the pre-synthesised pool of MreB. As this pool decreased in dividing cells the culture rapidly stopped growing after about two generations (the *L. pneumophila* doubling time is two hours) and then collapsed because of cell lysis. Exactly as on solid media, concentrations of IPTG above 20 μ M could support normal growth (Fig. 2C). Thus, although expressed at low levels, *mreB* is required for growth and we conclude that *mreB* is an essential gene in *L. pneumophila*.

Upregulation of *mreB* is not required for natural transformation. Construction of a conditional *mreB* mutant proved that MreB is essential but also showed that low levels of MreB are sufficient for normal growth. The synchronous induction of *mreB* and *comEA* suggests that higher levels of MreB may be needed to support transformation. To test this possibility we first verified that expression of the genetically engineered inducible *mreB^{ind}* allele is disconnected from that of *comEA*. The *lpp0148_{TAA} mreB^{ind}* strain grown on CYE plate containing 20 μ M IPTG was inoculated in liquid AYE medium supplemented with different concentration of IPTG and allowed to grow for two generations after which total RNAs were extracted. As expected, and because of the insertion between *comEA* and *mreB* (Fig. 2A), Northern-blot analysis of *comEA* expression shows that in the *lpp0148_{TAA} mreB^{ind}* strain the transcript corresponding to the *comEA-mreB* mRNA is now absent (Fig. 3A). Analysis of the same samples for *mreB* expression show that, even at the highest concentration of IPTG (500 μ M), *mreB* is far less expressed in the *lpp0148_{TAA} mreB^{ind}* strain than in the *lpp0148_{TAA}* strain (24 ± 4 times, as determined by densitometry) (Fig. 3A). Importantly these differences in *mreB* expression levels have no dramatic consequences on the cells that show an elongated rod-shaped morphology (Fig. S1). At 500 μ M of IPTG, *mreB* expression in the *lpp0148_{TAA} mreB^{ind}* strain is similar to that in the Paris wild-type strain (1.08 ± 0.07). This condition

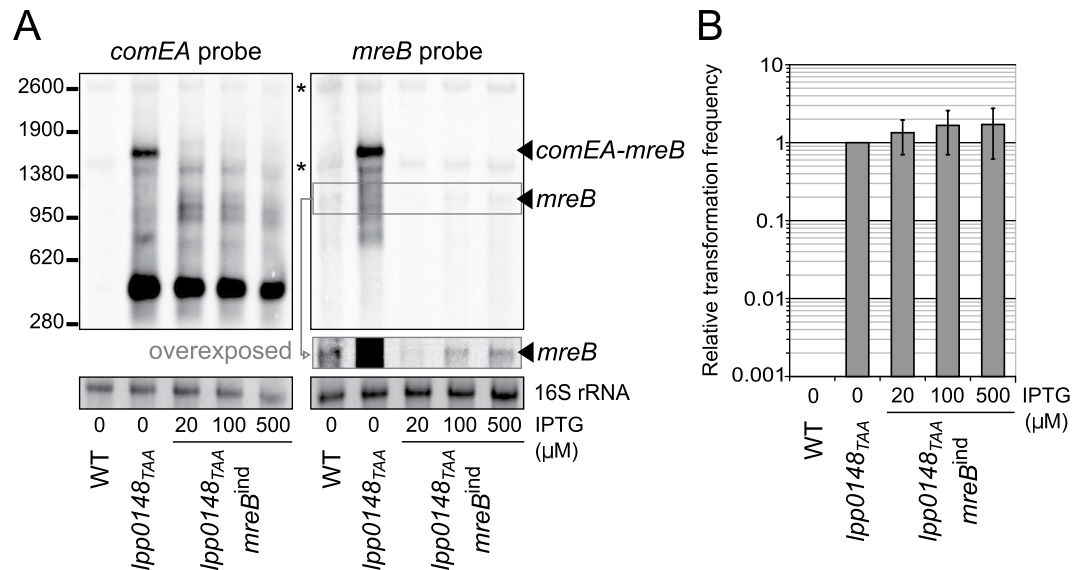


Figure 3. Up-regulation of *mreB* during competence is not required for natural transformation.

(A) Northern-blot analyses of the Paris wild-type, *lpp0148_{TAA}* and *lpp0148_{TAA} mreB^{ind}* strains. The strains were grown in AYE with various concentration of IPTG until the culture reached an OD₆₀₀ of ~1. RNA were extracted, separated on a denaturing agarose gel and probed with *comEA* and *mreB* probes. Ethidium-bromide staining of 16S ribosomal RNA was used to ensure that equal amounts of total RNA were loaded in each lane. The length in nucleotides and the position of the RNA ladder bands are shown on the left. (B) Effect of the expression level of MreB on natural transformation. The natural transformability of the *lpp0148_{TAA} mreB^{ind}* strain in the presence of varying concentrations of IPTG was determined under the same conditions as for panel (A). Bacteria were exposed to transforming DNA for 20 minutes and then plated on selective and non-selective media. Relative transformation frequency is the ratio of the number of CFUs counted on selective medium divided by the number of CFUs counted on non-selective medium. For each experiment data are expressed relative to the *lpp0148_{TAA}* strain. At this OD₆₀₀ and temperature, the transformation frequency of the Paris wild-type strain is always below the detection limit (<1.10⁻⁰⁹). Transformation experiments in the absence of DNA never gave rise to transformants or spontaneous resistant mutants. Depending on experiments transformation frequencies ranged from 4.10⁻⁰⁶ to 1.10⁻⁰⁴. Error bars represent standard deviation from the mean of at least three independent experiments.

effectively represents the situation where *mreB* is expressed at the basal level of the Paris wild-type strain independently of competence development. In this condition, the transformability of the *lpp0148_{TAA} mreB^{ind}* strain is equivalent to that of the *lpp0148_{TAA}* strain (Fig. 3B) showing that the elevated expression of *mreB* during competence is not required for DNA uptake and subsequent transformation. Moreover, it is interesting to note that, at the lowest concentration of IPTG that supports growth (20 μM) the *mreB* transcript is below the detection level which is about 40-times below the expression level in the Paris wild-type strain. Yet this did not result in a significant difference in transformability. Collectively the data suggest that the induction of *mreB* during competence is coincidental and has no functional significance with respect to natural transformation.

Morphologically altered MreB-depleted cells remain transformable. The above experiments could not rule out the possibility that the low levels of MreB required for growth could be also needed to import and/or integrate exogenous DNA. As described above, the *lpp0148_{TAA} mreB^{ind}* strain can be reproducibly grown in the absence of IPTG for two generations before growth begins to slow and then stops (Fig. 2C and Fig. 4A). This provided a narrow window during which we could observe the consequences of a gradual loss of MreB in dividing cells including on natural transformability. The *lpp0148_{TAA} mreB^{ind}* strain was grown for 24 h on CYE plate with the least amount of IPTG that could support growth (20 μM). The cells were then transferred to liquid IPTG-free medium at an OD₆₀₀ of 0.2 and growth was monitored along with cell morphology. In agreement with the two hours generation time of *L. pneumophila*, at 2 hours post-inoculation the OD₆₀₀ had doubled and the bacteria retained their elongated rod shape but the mean cell diameter (0.65 μm) was significantly increased compared to their initial mean cell diameter (0.61 μm) (Fig. 4B). Another two hours later (T = 4 h) the bacteria already showed strong alterations in their rod-shaped morphology and appeared enlarged at mid-cell (mean diameter of 0.83 μm) which may have contributed to the increase in OD₆₀₀. Indeed, despite increased OD₆₀₀ the viable count determined on CYE plates containing IPTG remained steady. At the next generation time, the bacteria displayed a dramatically altered morphology with an ellipsoidal to ovoid shape (mean

diameter = 1.13 μm) and their viability was strongly affected (Fig. 4A,B). At $T = 2$ h, the cells could still divide but the MreB levels were already too low to properly coordinate cell wall synthesis resulting in visible defect on the next generation time (at $T = 4$ h) but transformation seemed unaffected (Fig. 4A). Beyond $T = 6$ h, cells could no longer divide and no transformants could be obtained. It is of note that the decreased viability at this time point prevented the detection of transformants occurring at a frequency below 1.10^{-7} . At $T = 4$ h the defects in cell morphology indicate that peptidoglycan assembly had been going on in the absence of functional shape-determining MreB cytoskeleton. Although moribund and deformed these cells remained transformable. At this time point, transformation frequency (5.07×10^{-7}) is reduced about 6-fold when compared to that of the *lpp0148*_{TAA} *mreB*^{ind} cells at $T = 0$ (3.29×10^{-6}) or to the *lpp0148*_{TAA} cells having competence-induced levels of MreB (3.26×10^{-6}). This decreased transformability appears somehow limited given the poor state of the cells at this stage and a requirement of MreB for the functioning of the DNA uptake system can be excluded. Yet since transformation frequency is reduced a minor role cannot be ruled out. Alternatively this limited decrease in transformability of MreB-depleted cells may represent an indirect effect of the major disturbance of the cell wall that non-specifically alter the assembly and/or localisation of membrane-associated systems^{33,45,46}.

Natural transformation is resistant to the MreB inhibitor A22. In order to ascertain a possible role of MreB in natural transformation without altering viability or inducing major disturbance of the cell morphology we sought to use MreB inhibitors. A22 is a widely used small molecule inhibitor⁴⁷ that interacts with the MreB nucleotide binding pocket⁴⁸. In several species (*Caulobacter crescentus*, *Escherichia coli*, *Pseudomonas aeruginosa*, *Myxococcus xanthus*), A22 was shown to cause a rapid and reversible disturbance of the MreB cytoskeleton thereby arresting MreB-dependent processes within one to two minutes without immediately affecting cell morphology^{28,33,49,50}. The effect of MreB inhibition on cell morphology only becomes apparent when the cells are allowed to grow while MreB cytoskeleton is disrupted, as they then display a round-shaped morphology. Consistent with the essential nature of MreB in *L. pneumophila* A22 showed antibiotic activity against this organism and cells growing in growth-limiting sub-inhibitory concentration of A22 (0.25 $\mu\text{g}/\text{mL}$) exhibit a morphology identical to MreB-depleted cells (Fig. 5A). We isolated twelve mutants that were resistant to various levels of A22. All mutants were found to have acquired non-synonymous mutations in the *mreB* gene associated with various A22-resistance levels (Fig. S2). Using the *lpp0148*_{TAA} *mreB*^{ind} strain we could transfer four of the most resistant alleles to a genetic background previously unexposed to A22 (see Materials and Methods) and verified that these mutations were indeed sufficient to confer resistance to A22 (Fig. 5B). These data confirmed that MreB is the primary target of A22 in *L. pneumophila* and that it alters the MreB cytoskeleton similarly to as in other organisms. We therefore tested transformability against a wide range of A22 concentrations. At concentrations up to 100 $\mu\text{g}/\text{mL}$, which is well above the MIC, we did not observe any effect on natural transformation (Fig. 5C). Treatment of the bacteria with A22 for 5 minutes prior to transformation did not reduce transformability either (data not shown). However at higher concentrations, A22 exerted a significant effect on natural transformability, reducing it by up to two orders of magnitude (Fig. 5C). Yet transformability of A22-resistant MreB mutants was equally affected suggesting that inhibition of transformation at high concentrations results from an off-target effect (Fig. 5D). We conclude that natural transformation is resistant to A22-mediated inhibition of MreB and thus that MreB does not play any direct role in natural transformation.

Discussion

In eukaryotes actin filament structures that control the shape of the cell are also used in other non-essential cellular processes (*i.e.* phagocytosis) and even subverted by pathogens. A similar situation exists with MreB, although its primary function is to coordinate cell wall synthesis it can also serve other active processes such as gliding motility^{50,51}, type IV pilus-dependent twitching motility³³ and infection of bacterial virus^{52,53}. Like twitching motility, natural transformation is associated with type IV pili, and import of DNA macromolecule represented a likely MreB-dependent process. Another compelling evidence for a possible role of MreB in natural transformation came from the observation that *mreB* is up-regulated during competence in the Gram-positive *B. subtilis*¹⁹. Further supporting this hypothesis we here show that the same situation occurs in the rod-shaped Gram-negative *L. pneumophila*. We found that *mreB* was induced because it forms a bicistronic mRNA with *comEA*, a gene coding an essential component of the DNA uptake system. This is most likely due to inefficient transcription termination of the *comEA* gene and may appear as a side effect of *comEA* induction. Yet the co-expression of *comEA* and *mreB* as a bicistronic mRNA suggested a functional significance. For instance, during DNA uptake *ComEA* relocates upon DNA binding and this process might have been dependent on MreB dynamics¹⁷. We first tested whether the increased expression of *mreB* was important for the functioning of the DNA uptake system. By constructing an inducible allele of *mreB* we first found that *mreB* is essential in *L. pneumophila*, confirming it a possible target for antibiotic development⁵⁴. Most importantly for this study we could disconnect *mreB* expression from that of *comEA*. Bacteria expressing limited amount of *mreB*, even below that of non-competent bacteria, remained as transformable as bacteria displaying competence-associated high levels of *mreB*. We could not determine whether MreB showed different localisation pattern in competent cells compared to their non-competent counterparts but large differences in expression levels of *mreB* seemed to have no detectable consequences on growth and morphology of the cells. Although

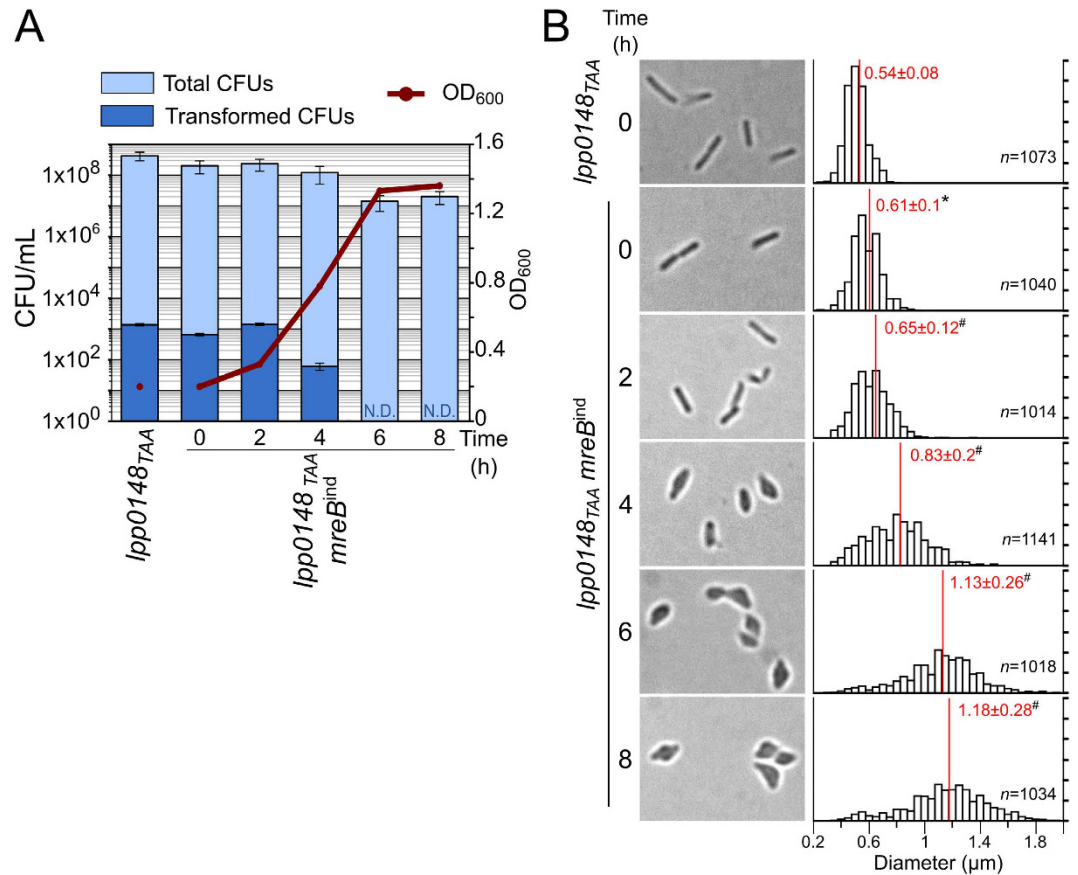


Figure 4. Morphologically altered MreB-depleted cells remain transformable. (A) Growth of the *lpp0148_{TAA} mreB^{ind}* strain in the absence of IPTG. The culture was initiated with the *lpp0148_{TAA} mreB^{ind}* strain previously grown on a CYE plate with 20 μM of IPTG and resuspended in warm medium (37 °C, starting OD₆₀₀ = 0.2). Optical density of the culture was monitored at 600 nm. Aliquots of the culture were simultaneously tested for transformability and plated on selective CYE + IPTG + Kan plates to determine colony-forming units of transformants (CFU) and on non-selective CYE + IPTG plates for determination of total CFU counts. Data are representative of three independent experiments. Error bars represent standard error of experimental determination of CFU counts. N.D., not detectable. (B) Bright light microscopy of bacterial cells of the cultures tested for transformability and corresponding distribution of the bacterial cells diameter measured on at least 1000 cells. The mean (red line) and standard deviation of the sample are indicated for each distribution. Statistical analysis was performed on the different data sets (see Material and Methods). A Shapiro-Wilk test confirmed the Normal distribution of the measured parameter for each condition ($p < 0.01$). A Welch's t-test determined that the mean cell diameter of the *lpp0148_{TAA} mreB^{ind}* T₀ sample is significantly different ($p < 0.01$) from that of the *lpp0148_{TAA}* strain (black asterisk). Similarly the mean cell diameter of each *lpp0148_{TAA} mreB^{ind}* sample (T_N, with N the number of hours) is significantly different ($p < 0.01$) from that of the *lpp0148_{TAA} mreB^{ind}* T_{N-2} sample (black hash mark).

mreB expression is required for viability, *mreB* levels below those found in the Paris wild-type strain were sufficient to maintain cell shape and division suggesting that normal MreB levels are not limiting during growth. Growing the *mreB*-inducible strain without inducer we could observe the fate of cells in which MreB levels fall below the level required to maintain the rod-shaped morphology of the bacteria. MreB-depleted bacteria rapidly change morphology and loose viability. Yet before viability is too affected these morphologically-altered cells retained the ability to take up and integrate exogenous DNA. Their transformability is relatively lower (6-fold) but the transformation system seems to remain mostly functional. Mutants of genes involved in the DNA uptake system typically completely lose transformability. For instance, deletion mutants of the *comEA* and *comEC* genes in *L. pneumophila* JR32 strain showed a 1000-fold decreased transformability and no detectable transformability, respectively³⁹. If MreB had played an important role in transformation we would have expected a much greater effect but an indirect and secondary role might not be excluded.

The bacterial DNA uptake system is a composite system involving a surface-exposed type IV pilus and a membrane-associated complex that imports the DNA as a single-strand molecule^{3,32}. In *Pseudomonas*

aeruginosa inactivation of MreB leads to mislocalisation of the type IV pilus retraction ATPase PilT leading to a reduction in motility³³. We cannot exclude the possibility that MreB is required for the proper localisation of the DNA uptake system that most likely involves a type IV pilus in *L. pneumophila*^{37,55}. This mislocalisation might be responsible for the observed decreased in transformability. Alternatively, MreB has been reported to form membrane regions with increased fluidity which affect the movement of membrane-associated proteins⁵⁶. This could impact the activity of the transmembrane DNA channel for the incoming DNA formed by ComEC. However it is still unclear if MreB-dependent movements of the membrane-associated proteins impact the activity of the membrane-associated processes. The A22 drug is well documented to disrupt the MreB cytoskeleton dynamics at concentrations varying from 10 to 50 µg/mL in multiple species^{28,33,49,50}. Yet, A22 could not prevent transformation in *L. pneumophila* when used at concentrations up to 100 µg/mL. At 200 µg/mL a significant decrease in transformation was observed but appeared to be non-specific. Thus A22 could inhibit transformation at high concentrations but it did so independently of MreB. One possibility is that A22 has a secondary target that is involved in natural transformation. A possible candidate is the PilM ATPase which is required for type IV pilus biogenesis and harbors a MreB-like fold⁵⁷.

All the data presented here are consistent with the absence of a direct involvement of MreB in the DNA uptake activity. During the preparation of this manuscript similar conclusions were published in the distantly-related Gram-positive organism *B. subtilis*³⁴. The data confirmed that in *B. subtilis* *mreB* is also induced during competence and under control of the competence regulator ComK^{19,34}. There are some striking similarity between the two systems. First, ComK does not actually activate transcription of the *mreB* promoter, rather it activates transcription of a probable *maf-radC* operon upstream of *mreB*. Second, like *comEA*, *maf* and *radC* are competence-associated genes. The *radC* gene appears dispensable for transformation in *S. pneumoniae*⁹ and in *H. influenzae* a *radC* mutant shows a small defect in DNA uptake that does not translate into a transformation defect⁵⁸. Nonetheless *radC* is induced during competence in several Gram-negative and Gram-positive organisms. So just like in *L. pneumophila*, the induction of *mreB* is indirect and results from the induction of competence-associated genes located upstream. Similarly to our conclusion in *L. pneumophila*, MreB also plays no direct role in transformation in *B. subtilis*. However MreB appeared to directly or indirectly interact with the ComGA ATPase. In addition to being important for transformation ComGA is responsible for a block of cell division that is noticeable when competent cells developing in stationary phase are placed in fresh medium. While the block of cell division requires Maf and its interaction with ComGA⁵⁹ the sequestration of MreB by ComGA was proposed to prevent cell elongation³⁴. A ComGA homolog required for transformation has not yet been identified in *L. pneumophila*. Moreover, in contrast to *B. subtilis*, *L. pneumophila* develops competence in mid-exponential phase and then turns off competence before entering the stationary phase (Fig. 1C,D). So a phenomenon of competence-associated strict inhibition of cell division has not been reported in *L. pneumophila* and it is not known whether this model applies to other competent species. A more detailed analysis of competence development may someday reveal a role of MreB in the timing of competence development or on cell division during this competence phase. Yet on the basis of our work and on the same situation in *B. subtilis*, a direct role of MreB in DNA uptake and transformation can be eliminated.

Materials and Methods

Chemicals, media and growth conditions. *L. pneumophila* strains were grown in liquid media ACES [N-(2-acetamido)-2-aminoethanesulfonic acid]-buffered yeast extract (AYE) or on solid media ACES-buffered charcoal yeast extract (CYE) plates. Liquid cultures were performed in 13-mL tube containing 3 mL of medium in shaking incubator at 200 rpm. Alternatively, growth was monitored in 100 µL in 96-well plates placed inside a temperature-controlled plate reader. The plate was submitted to intermittent shaking (100 rpm, 60 sec every 7 min) and growth was monitored by measuring absorbance at 600 nm every 15 min. When appropriate kanamycin and gentamicin were used respectively at 15 µg/mL and 10 µg/mL. Sucrose counter-selection was done on CYE plate containing 5% (w/vol) sucrose. The MreB inhibitor A22 was purchased either from Sigma-Aldrich or Calbiochem, solubilised in dimethyl sulfoxide, aliquoted and stored at -80 °C.

Strains and plasmids construction. The strains in this study are derived from the *L. pneumophila* Paris clinical isolate (Outbreak isolate CIP107629). Plasmid sequences are available upon request. Oligonucleotides used in this study are listed in Supplementary Table S1. All strain constructions were verified by PCR and sequencing.

Markerless mutants of the *lpp0148* and *lpp2773* genes were constructed in two steps. First a “kan-sacB” cassette carrying a kanamycin resistance gene and the counter-selectable *sacB* gene were inserted in the *lpp0148* and *lpp2773* genes. To do so the upstream and downstream regions (2 kb each) of *lpp0148* and *lpp2773* were amplified with primers carrying 30-nucleotide sequences complementary to ends of the *kan-sacB* cassette. The upstream and downstream region were assembled to the *kan-sacB* cassette by PCR overlap extension (PrimeSTAR Max polymerase, Takara) and used to transform the Paris wild-type strain by natural transformation followed by selection on kanamycin⁴¹. The interrupted *lpp0148* and *lpp2773* genes were then replaced by alleles in which an ochre stop codon (TAA) was introduced between the eleventh and twelfth codons. The mutated alleles were synthesised by overlapping PCR and introduced

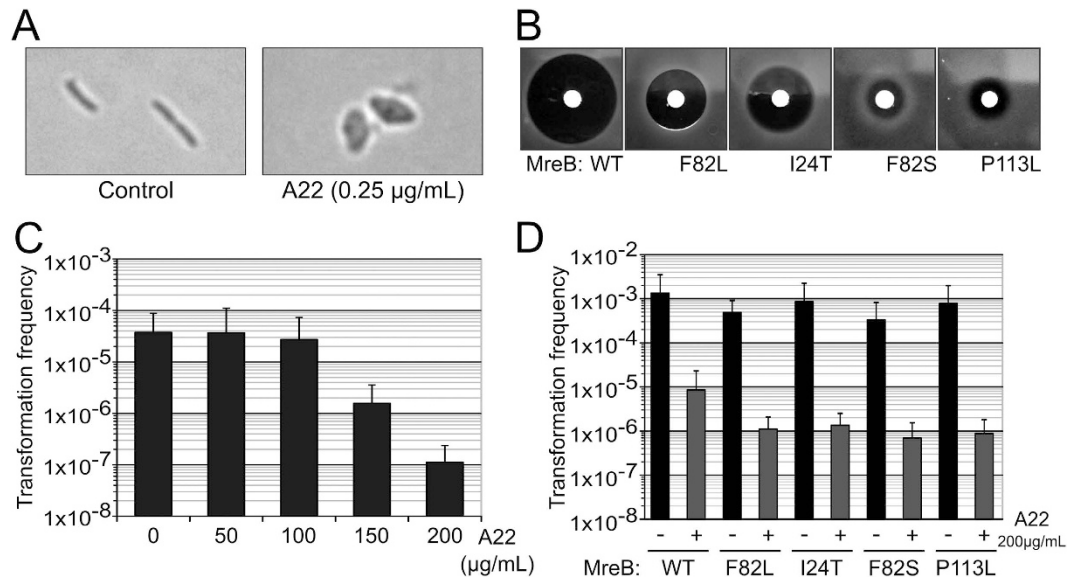


Figure 5. Natural transformation is resistant to the MreB inhibitor A22. (A) Bright light microscopy of *L. pneumophila* chronically exposed to low levels of A22 (0.25 µg/mL). (B) Sensitivity to A22 of A22-resistant mutants of MreB determined by disc diffusion assay. (C) Determination of the natural transformability of the *L. pneumophila* *lpp0148*_{TAA} strain in the presence of increasing concentrations of A22. Transformation frequency is the ratio of the number of CFUs counted on selective medium divided by the number of CFUs counted on non-selective medium. Error bars represent standard deviation from the mean of three independent experiments. (D) Effect of high concentration of A22 on the transformability of A22-sensitive and A22-resistant strains. Error bars represent standard deviation from the mean of three independent experiments.

in the strains by natural transformation³⁹ followed by selection on 5% sucrose. Sucrose-resistant and kanamycin-sensitive colonies carried the alleles of *lpp0148*_{TAA} and *lpp2773*_{TAA} containing the premature stop codon.

The inducible mutant of *mreB* was obtained by replacing its promoter by a synthetic IPTG-inducible promoter at the natural chromosomal locus in the *lpp0148*_{TAA} mutant strain. A synthetic cassette was constructed to carry the *lacIq* gene, followed by a gentamicin resistance gene and a synthetic promoter with a -35 box (TTGCTT) and a -10 box (TATAAT) each followed by a LacO operator site (ATTGTGAGCGGATAACAATT). The cassette was integrated between the *comeEA* (*lpp0872*) and *mreB* (*lpp0873*) gene by natural transformation as described above. Transformants were selected on CYE plates containing gentamicin and IPTG (0.5 mM). The resulting *lpp0148*_{TAA} *mreB*^{ind} strain requires IPTG for growth in liquid and solid media.

The A22 resistant alleles of *mreB* were transferred to a new genetic background by natural transformation of the PCR-amplified *mreB* alleles in the *lpp0148*_{TAA} *mreB*^{ind} strain. Colonies that could grow in the absence of IPTG had acquired the A22-resistant *mreB* allele and lost the *lacIq* and gentamicin resistance cassette.

The pGEM-ihfB::Kan plasmid used in natural transformation experiments was constructed by cloning a 5 kb fragment containing *ihfB* interrupted by a kanamycin resistance gene⁶⁰ into the pGEM-T easy vector (Promega).

RNA extraction. Bacteria were grown in AYE to the desired optical density and cells were fixed by adding 1 mL of culture to a 2-mL tube on ice containing an equal volume of methanol. The mixed suspension was kept on ice until the bacterial cells were collected by centrifugation (1 min, 21,000 g, 4°C) and then stored at -80°C. Thawed bacterial pellets were resuspended in 50 µL of RNAsnap buffer (18 mM EDTA, 0.025% SDS, 1% 2-mercaptoethanol, 95% formamide)⁶¹ and lysed by incubating the suspension at 95°C for 7 min. One millilitre of commercial tri-reagent solution (acid guanidinium thiocyanate-phenol-chloroform)⁶² was added and RNA extraction was performed following the manufacturer's instructions. RNA sample purity and concentration were determined by spectrophotometric analysis on a NanoDrop 2000 UV-Vis Spectrophotometer (Thermo).

Northern-blot. Northern-blot analysis were performed as previously described³⁹. Briefly, three micrograms of total RNA in denaturing buffer were loaded per lane and run on denaturing formaldehyde 1.5% agarose gel in MOPS buffer. RNA were transferred to nylon membrane (IMMOBILON-NY+, Millipore

corporation) by capillary transfer in 10X SSC buffer (Saline Sodium Citrate 1X: 150 mM NaCl + 15 mM sodium citrate) and then cross-linked to the membrane by UV irradiation. Membranes were hybridised at 42°C with 5'-biotinylated oligonucleotide probes (5 nM) for either *comEA* (comEA2-NB) or *mreB* (mreB-NB) in ULTRAhyb Ultrasensitive Hybridisation Buffer (Ambion, Austin, TX). Following overnight hybridisation the membranes were washed twice in 2X SSC buffer containing 0.1% SDS at 65°C according to the ULTRAhyb manufacturer instructions. Probed membranes were revealed using horseradish peroxidase-conjugated streptavidin and enhanced luminol substrate (Chemiluminescent Nucleic Acid Detection Module, Pierce, Rockford, IL). Luminescence signals were acquired using an imaging workstation equipped with a charge-coupled device camera (Thermo).

Determination of natural transformability. The transformation ability of *L. pneumophila* Paris wild-type strain at different time points during growth was determined as follows. The strain was streaked on CYE solid medium and plates were incubated overnight at 37°C. Bacteria were then resuspended in AYE and this suspension was used to inoculate 50 mL AYE at a starting OD₆₀₀ of 0.05 in 500-mL Erlenmeyer flasks. Cultures were incubated under constant shaking at 30°C and, when an OD₆₀₀ of interest was reached, the volume containing 1.10⁹ cells was collected, centrifuged for 3 minutes at 5000 g and pellets were resuspended in 200 µL AYE. This cell suspension was mixed with 3 µg of pGEM-ihfB::Kan and incubated 30 min at 30°C without shaking (this plasmid is non-replicative in *L. pneumophila* but contains a kanamycin-resistance cassette inserted in the *ihfB* gene of *L. pneumophila*, this locus can recombine with the chromosome and this produces kanamycin-resistant transformants). 20 U of DNase I (Sigma) was added and the volume was adjusted to 1 mL with AYE. The cells were incubated 2 h at 37°C shaking and ten-fold serial dilutions were then plated on non-selective medium (CYE) and selective medium (CYE + Kanamycin 15 µg/mL). Plates were incubated for 72 h at 37°C and colony-forming units (CFU) counting was performed. Transformation frequency is the ratio of the number of CFUs counted on selective medium divided by the number of CFUs counted on non-selective medium.

The transformation ability of the *lpp0148*_{TAA} *mreB*^{ind} strain compared to the *lpp0148*_{TAA} strain was determined as follows. The *lpp0148*_{TAA} *mreB*^{ind} strain was streaked on CYE solid medium containing IPTG at 20 µM. The *lpp0148*_{TAA} strain was streaked on CYE solid medium without IPTG. Plates were incubated overnight at 37°C, and bacteria were resuspended at an OD₆₀₀ = 0.2 in 2 mL AYE, containing 20 or 500 µM IPTG. Tubes were incubated under constant shaking at 37°C. When an OD₆₀₀ of approx. 1 was reached, 1 mL of culture was centrifuged for 3 min at 5000 g in a table-top microcentrifuge, and pellets were resuspended in 200 µL of distilled water containing 2 µg of pGEM-ihfB::Kan. After 20 minutes of incubation at 37°C without shaking, tubes were centrifuged 3 minutes at 5000 g and pellets were washed twice in AYE. Pellets were finally resuspended in 200 µL AYE. Ten-fold serial dilutions were then plated on non-selective medium (CYE, with 20 µM IPTG when appropriate) and selective medium (CYE + Kanamycin 15 µg/mL, with 20 µM IPTG when appropriate). Plates were incubated for 72 h at 37°C and transformation frequencies were determined as previously described. The effect of A22 inhibitor on transformation was determined by adding A22 at the indicated concentration along with the transforming DNA.

The transformation ability of the *lpp0148*_{TAA} *mreB*^{ind} strain in the absence of IPTG was determined similarly except that centrifugation steps were avoided to preserve bacterial morphology. Transformation experiments were done using 1 mL of culture and 5 µg pGEM-ihfB::Kan. The *lpp0148*_{TAA} *mreB*^{ind} strain was streaked on CYE medium containing 20 µM IPTG and incubated overnight at 37°C. The strain was then resuspended in AYE media at an OD₆₀₀ = 0.2 and incubated under constant shaking at 37°C. After 0, 2, 4, 6 and 8 hours, 1050 µL of culture was taken and put into contact with 5 µg of pGEM-ihfB::Kan for 20 minutes at 37°C. After 20 min of incubation at 37°C, 50 µL of the suspension were used to perform ten-fold serial-dilutions which were then plated on selective and non-selective medium (CYE + kanamycin 15 µg/mL + 20 µM IPTG, and CYE + 20 µM IPTG, respectively) and the remaining culture (~1 mL) was used to flood a plate of selective medium. Plates were incubated 72 h at 37°C and transformation frequencies were determined as previously described. At each tested time, OD₆₀₀ of the culture was measured, and 1 mL of culture was used to perform microscopic observation of the bacteria as described further below.

Isolation of A22-resistant mutants. A22-resistant mutants were obtained by plating a stationary culture of the *lpp0148*_{TAA} strain on CYE medium containing A22 at 25, 50 or 100 µg/mL. After 72 h of incubation at 37°C, single colonies were picked and streaked on CYE medium. After 48 h of incubation at 37°C, mutants were collected and stored in AYE medium with 15% glycerol at -80°C. We analysed 4, 8 and 2 mutants obtained on plate containing A22 at 25, 50 and 100 µg/mL, respectively. Sequencing confirmed that the selected mutants each harboured mutations in the *mreB* gene (Fig. S2). Four mutations conferring high resistance levels to A22 were transferred to a clean *lpp0148*_{TAA} genetic background using the *lpp0148*_{TAA} *mreB*^{ind} strain. Mutated *mreB* genes of the A22 spontaneous-resistant mutants were amplified using mreBseqF and mreBseqR primers. The PCR product was then added to a 200 µL AYE culture of the *lpp0148*_{TAA} *mreB*^{ind} strain that requires IPTG for *mreB* expression and growth. After 20 minutes of incubation, bacteria were plated on CYE medium without IPTG. After 72 h of incubation at 37°C, we obtained colonies that grew in the absence of IPTG implying a loss of the inducible promoter and

potentially a transformation by the mutated *mreB* gene. Sequencing confirmed the acquisition of the mutated *mreB* allele in an otherwise wild-type locus. The four *mreB* mutants reconstructed this way were tested for A22 resistance and used in natural transformation experiments.

Determination of A22-resistance by disc diffusion assay. Strains of interest were resuspended at an $OD_{600} = 0.1$ in 3 mL AYE liquid medium and incubated for two days at 37°C under constant shaking. The culture was used to flood a CYE plate for a few minutes. Liquid medium was then removed and plates were dried at room temperature for 30 min. A paper disc impregnated with 10 µL of an A22 solution (10 mg/mL) was then placed at the centre of each plate. Plates were incubated 3 days at 37°C before reading.

Microscopy. Bacteria were collected from 1 mL of culture by centrifugation 3 min at 5000 g and pellets were resuspended in 300 µL PBS Formaldehyde 3.7% and incubated at room temperature for 30 min. Acid-washed (ethanol/HCl 1 M) glass coverslips were coated with poly-L-lysine by immersion in a poly-L-lysine 0.01% solution in distilled water (Sigma-Aldrich) for 5 min. Fixed bacteria in PBS Formaldehyde 3.7% were pipetted on the air-dried coverslips and let to settle and stick to the coverslips for about 30 min. Coverslips were then washed twice with PBS, and DNA was labelled using Hoechst 33288 (12 µg/mL in PBS) for 1 h at room temperature. Coverslips were washed twice in PBS and mounted using 8 µL of mounting solution (DAPCO). After an overnight incubation at 4°C, slides were observed and imaged with an epifluorescence microscope (Zeiss Axioplan 2). Morphological changes observed in the *lpp0148_{TAA} mreB^{ind}* strain when grown in the absence of IPTG were quantified by measuring the width of bacterial cells at mid-cell. The measurement of bacterial cells width was performed on pictures from the microscopy experiments, using the KLONK Image Measurement software. At least one thousand bacterial cells were measured for each condition. A Shapiro-Wilk test confirmed the Normal distribution of the measured parameter for each condition ($p < 0.01$). Significance testing was performed using a Welch t-tests and two samples with a P value < 0.01 were considered significantly different.

References

- Gogarten, J. P. & Townsend, J. P. Horizontal gene transfer, genome innovation and evolution. *Nat Rev Micro* **3**, 679–687 (2005).
- Seitz, P. & Blokesch, M. Cues and regulatory pathways involved in natural competence and transformation in pathogenic and environmental Gram-negative bacteria. *FEMS Microbiol. Rev* (2012). doi: 10.1111/j.1574-6976.2012.00353.x
- Johnston, C., Martin, B., Fichant, G., Polard, P. & Claverys, J.-P. Bacterial transformation: distribution, shared mechanisms and divergent control. *Nat. Rev. Microbiol.* **12**, 181–196 (2014).
- Seitz, P. & Blokesch, M. DNA-uptake machinery of naturally competent *Vibrio cholerae*. *PNAS* **110**, 17987–17992 (2013).
- Laurenceau, R. *et al.* A Type IV Pilus Mediates DNA Binding during Natural Transformation in *Streptococcus pneumoniae*. *PLoS Pathog* **9**, e1003473 (2013).
- Provvedi, R. & Dubnau, D. ComEA is a DNA receptor for transformation of competent *Bacillus subtilis*. *Molecular Microbiology* **31**, 271–280 (1999).
- Draskovic, I. & Dubnau, D. Biogenesis of a putative channel protein, ComEC, required for DNA uptake: membrane topology, oligomerization and formation of disulphide bonds. *Mol. Microbiol* **55**, 881–896 (2005).
- Mortier-Barrière, I. *et al.* A key presynaptic role in transformation for a widespread bacterial protein: DprA conveys incoming ssDNA to RecA. *Cell* **130**, 824–36 (2007).
- Attaiech, L. *et al.* Role of the single-stranded DNA-binding protein SsbB in pneumococcal transformation: maintenance of a reservoir for genetic plasticity. *PLoS Genet.* **7**, e1002156 (2011).
- Redfield, R. J. *et al.* A novel CRP-dependent regulon controls expression of competence genes in *Haemophilus influenzae*. *J Mol Biol* **347**, 735–47 (2005).
- Setlow, J. K., Spikes, D. & Griffin, K. Characterization of the *rec-1* gene of *Haemophilus influenzae* and behavior of the gene in *Escherichia coli*. *J. Bacteriol.* **170**, 3876–3881 (1988).
- Meibom, K. L., Blokesch, M., Dolganov, N. A., Wu, C.-Y. & Schoolnik, G. K. Chitin induces natural competence in *Vibrio cholerae*. *Science* **310**, 1824–1827 (2005).
- Lovett, C. M., Love, P. E. & Yasbin, R. E. Competence-specific induction of the *Bacillus subtilis* RecA protein analog: evidence for dual regulation of a recombination protein. *J. Bacteriol.* **171**, 2318–2322 (1989).
- Raymond-Denise, A. & Guillen, N. Expression of the *Bacillus subtilis* *dinR* and *recA* genes after DNA damage and during competence. *J. Bacteriol.* **174**, 3171–3176 (1992).
- Martin, B., García, P., Castanié, M. P. & Claverys, J. P. The *recA* gene of *Streptococcus pneumoniae* is part of a competence-induced operon and controls lysogenic induction. *Mol. Microbiol.* **15**, 367–379 (1995).
- Maier, B., Chen, I., Dubnau, D. & Sheetz, M. P. DNA transport into *Bacillus subtilis* requires proton motive force to generate large molecular forces. *Nat. Struct. Mol. Biol* **11**, 643–649 (2004).
- Seitz, P. *et al.* ComEA is essential for the transfer of external DNA into the periplasm in naturally transformable *Vibrio cholerae* cells. *PLoS Genet.* **10**, e1004066 (2014).
- Kidane, D. & Graumann, P. L. Intracellular protein and DNA dynamics in competent *Bacillus subtilis* cells. *Cell* **122**, 73–84 (2005).
- Berka, R. M. *et al.* Microarray analysis of the *Bacillus subtilis* K-state: genome-wide expression changes dependent on ComK. *Mol. Microbiol.* **43**, 1331–1345 (2002).
- Shaevitz, J. W. & Gitai, Z. The structure and function of bacterial actin homologs. *Cold Spring Harb Perspect Biol* **2**, a000364 (2010).
- Ozyamak, E., Kollman, J. M. & Komeili, A. Bacterial actins and their diversity. *Biochemistry* **52**, 6928–6939 (2013).
- Dominguez-Escobar, J. *et al.* Processive movement of MreB-associated cell wall biosynthetic complexes in bacteria. *Science* **333**, 225–228 (2011).
- Garner, E. C. *et al.* Coupled, circumferential motions of the cell wall synthesis machinery and MreB filaments in *B. subtilis*. *Science* **333**, 222–225 (2011).

24. Karczmarek, A. *et al.* DNA and origin region segregation are not affected by the transition from rod to sphere after inhibition of *Escherichia coli* MreB by A22. *Mol. Microbiol.* **65**, 51–63 (2007).
25. Wang, X. & Sherratt, D. J. Independent segregation of the two arms of the *Escherichia coli* ori region requires neither RNA synthesis nor MreB dynamics. *J. Bacteriol.* **192**, 6143–6153 (2010).
26. Kruse, T. *et al.* Actin homolog MreB and RNA polymerase interact and are both required for chromosome segregation in *Escherichia coli*. *Genes Dev.* **20**, 113–124 (2006).
27. Kruse, T., Møller-Jensen, J., Løbner-Olesen, A. & Gerdes, K. Dysfunctional MreB inhibits chromosome segregation in *Escherichia coli*. *EMBO J.* **22**, 5283–5292 (2003).
28. Gitai, Z., Dye, N. A., Reisenauer, A., Wachi, M. & Shapiro, L. MreB actin-mediated segregation of a specific region of a bacterial chromosome. *Cell* **120**, 329–341 (2005).
29. Huo, Y.-J. *et al.* MreBCD-associated Cytoskeleton is Required for Proper Segregation of the Chromosomal Terminus during the Division Cycle of *Escherichia coli*. *Chin. Med. J.* **128**, 1209–1214 (2015).
30. Soufo, H. J. D. & Graumann, P. L. Actin-like proteins MreB and Mbl from *Bacillus subtilis* are required for bipolar positioning of replication origins. *Curr. Biol.* **13**, 1916–1920 (2003).
31. Gerdes, K., Howard, M. & Szardenings, F. Pushing and pulling in prokaryotic DNA segregation. *Cell* **141**, 927–942 (2010).
32. Averbhoff, B. & Friedrich, A. Type IV pili-related natural transformation systems: DNA transport in mesophilic and thermophilic bacteria. *Arch. Microbiol.* **180**, 385–393 (2003).
33. Cowles, K. N. & Gitai, Z. Surface association and the MreB cytoskeleton regulate pilus production, localization and function in *Pseudomonas aeruginosa*. *Mol. Microbiol.* **76**, 1411–1426 (2010).
34. Mirouze, N., Ferret, C., Yao, Z., Chastanet, A. & Carballido-López, R. MreB-Dependent Inhibition of Cell Elongation during the Escape from Competence in *Bacillus subtilis*. *PLoS Genet.* **11**, e1005299 (2015).
35. Chung, Y. S. & Dubnau, D. All Seven comG Open Reading Frames Are Required for DNA Binding during Transformation of Competent *Bacillus subtilis*. *J. Bacteriol.* **180**, 41–45 (1998).
36. Kawai, Y., Asai, K. & Errington, J. Partial functional redundancy of MreB isoforms, MreB, Mbl and MreBH, in cell morphogenesis of *Bacillus subtilis*. *Mol. Microbiol.* **73**, 719–731 (2009).
37. Stone, B. J. & Kwai, Y. A. Natural competence for DNA transformation by *Legionella pneumophila* and its association with expression of type IV pili. *J. Bacteriol.* **181**, 1395–1402 (1999).
38. Sexton, J. A. & Vogel, J. P. Regulation of hypercompetence in *Legionella pneumophila*. *J. Bacteriol.* **186**, 3814–25 (2004).
39. Charpentier, X., Faucher, S. P., Kalachikov, S. & Shuman, H. A. Loss of RNase R Induces Competence Development in *Legionella pneumophila*. *J. Bacteriol.* **190**, 8126–36 (2008).
40. Sahr, T. *et al.* Deep sequencing defines the transcriptional map of *L. pneumophila* and identifies growth phase-dependent regulated ncRNAs implicated in virulence. *RNA Biol.* **9**, 503–519 (2012).
41. Buchrieser, C. & Charpentier, X. Induction of Competence for Natural Transformation in *Legionella pneumophila* and Exploitation for Mutant Construction. *Methods Mol. Biol.* **954**, 183–195 (2013).
42. Jones, L. J., Carballido-López, R. & Errington, J. Control of cell shape in bacteria: helical, actin-like filaments in *Bacillus subtilis*. *Cell* **104**, 913–922 (2001).
43. Kruse, T., Bork-Jensen, J. & Gerdes, K. The morphogenetic MreBCD proteins of *Escherichia coli* form an essential membrane-bound complex. *Mol. Microbiol.* **55**, 78–89 (2005).
44. Figge, R. M., Divakaruni, A. V. & Gober, J. W. MreB, the cell shape-determining bacterial actin homologue, co-ordinates cell wall morphogenesis in *Caulobacter crescentus*. *Mol. Microbiol.* **51**, 1321–1332 (2004).
45. Nilsen, T., Yan, A. W., Gale, G. & Goldberg, M. B. Presence of multiple sites containing polar material in spherical *Escherichia coli* cells that lack MreB. *J. Bacteriol.* **187**, 6187–6196 (2005).
46. Pradel, N. *et al.* Polar positional information in *Escherichia coli* spherical cells. *Biochem. Biophys. Res. Commun.* **353**, 493–500 (2007).
47. Iwai, N., Nagai, K. & Wachi, M. Novel S-benzylisothiourea compound that induces spherical cells in *Escherichia coli* probably by acting on a rod-shape-determining protein(s) other than penicillin-binding protein 2. *Biosci. Biotechnol. Biochem.* **66**, 2658–2662 (2002).
48. Bean, G. J. *et al.* A22 disrupts the bacterial actin cytoskeleton by directly binding and inducing a low-affinity state in MreB. *Biochemistry* **48**, 4852–4857 (2009).
49. Wang, S., Arellano-Santoyo, H., Combs, P. A. & Shaevitz, J. W. Actin-like cytoskeleton filaments contribute to cell mechanics in bacteria. *Proc. Natl. Acad. Sci. USA* **107**, 9182–9185 (2010).
50. Mauriello, E. M. F. *et al.* Bacterial motility complexes require the actin-like protein, MreB and the Ras homologue, MglA. *EMBO J.* **29**, 315–326 (2010).
51. Treuner-Lange, A. *et al.* The small G-protein MglA connects to the MreB actin cytoskeleton at bacterial focal adhesions. *J. Cell Biol.* **210**, 243–256 (2015).
52. Jin, M., Chen, Y., Xu, C. & Zhang, X. The effect of inhibition of host MreB on the infection of thermophilic phage GVE2 in high temperature environment. *Sci Rep* **4**, 4823 (2014).
53. Muñoz-Espín, D. *et al.* The actin-like MreB cytoskeleton organizes viral DNA replication in bacteria. *Proc. Natl. Acad. Sci. USA* **106**, 13347–13352 (2009).
54. Vollmer, W. The prokaryotic cytoskeleton: a putative target for inhibitors and antibiotics? *Appl. Microbiol. Biotechnol.* **73**, 37–47 (2006).
55. Stone, B. J. & Abu Kwai, Y. Expression of multiple pili by *Legionella pneumophila*: identification and characterization of a type IV pilin gene and its role in adherence to mammalian and protozoan cells. *Infect. Immun.* **66**, 1768–1775 (1998).
56. Strahl, H., Bürmann, F. & Hamoen, L. W. The actin homologue MreB organizes the bacterial cell membrane. *Nat Commun* **5**, 3442 (2014).
57. Karupiah, V., Collins, R. F., Thistlethwaite, A., Gao, Y. & Derrick, J. P. Structure and assembly of an inner membrane platform for initiation of type IV pilus biogenesis. *Proc. Natl. Acad. Sci. USA* **110**, E4638–4647 (2013).
58. Sinha, S., Mell, J. C. & Redfield, R. J. Seventeen Sxy-Dependent Cyclic AMP Receptor Protein Site-Regulated Genes Are Needed for Natural Transformation in *Haemophilus influenzae*. *J. Bacteriol.* **194**, 5245–5254 (2012).
59. Briley, K., Prepiak, P., Dias, M. J., Hahn, J. & Dubnau, D. Maf acts downstream of ComGA to arrest cell division in competent cells of *B. subtilis*. *Mol. Microbiol.* **81**, 23–39 (2011).
60. Charpentier, X., Kay, E., Schneider, D. & Shuman, H. A. Antibiotics and UV Radiation Induce Competence for Natural Transformation in *Legionella pneumophila*. *J. Bacteriol.* **193**, 1114–1121 (2011).
61. Stead, M. B. *et al.* RNAsnap™: a rapid, quantitative and inexpensive, method for isolating total RNA from bacteria. *Nucleic Acids Res.* **40**, e156 (2012).
62. Chomczynski, P. & Sacchi, N. Single-step method of RNA isolation by acid guanidinium thiocyanate-phenol-chloroform extraction. *Anal. Biochem.* **162**, 156–159 (1987).

Acknowledgements

We thank Guy Condemine and Vladimir Shevchik for reviewing a first iteration of this manuscript. PAJ is supported by a doctoral fellowship from the French Ministry of Higher Education and Research. LA is supported by a post-doctoral fellowship from the Fondation pour la Recherche Médicale (SPF20130526652). This work was supported by a CNRS-Inserm ATIP-Avenir grant awarded to XC.

Author Contributions

P.A.J, L.A. and X.C. designed, performed and analysed experiments. X.C. wrote the main manuscript text, P.A.J. and L.A. contributed to the Material and Methods section. P.A.J., L.A. and X.C. prepared figures. All authors reviewed the manuscript.

Additional Information

Supplementary information accompanies this paper at <http://www.nature.com/srep>

Competing financial interests: The authors declare no competing financial interests.

How to cite this article: Juan, P.-A. *et al.* Natural transformation occurs independently of the essential actin-like MreB cytoskeleton in *Legionella pneumophila*. *Sci. Rep.* **5**, 16033; doi: 10.1038/srep16033 (2015).



This work is licensed under a Creative Commons Attribution 4.0 International License. The images or other third party material in this article are included in the article's Creative Commons license, unless indicated otherwise in the credit line; if the material is not included under the Creative Commons license, users will need to obtain permission from the license holder to reproduce the material. To view a copy of this license, visit <http://creativecommons.org/licenses/by/4.0/>