



HAL
open science

Morphological assessment of non-human primate models of osteoarthritis using HR-MRI and μ CT arthrography

Emmanuel Chereul, Denis Grenier, Anne-Laure Perrier, F. Taborik, L. Mahieu-Williame, Kevin Tse-Ve-Koon, T. Chuzel, S Martin, L Magnier, X. Pesesse, et al.

► To cite this version:

Emmanuel Chereul, Denis Grenier, Anne-Laure Perrier, F. Taborik, L. Mahieu-Williame, et al.. Morphological assessment of non-human primate models of osteoarthritis using HR-MRI and μ CT arthrography. ISMRM, 2013, Salt Lake City, United States. hal-01984459

HAL Id: hal-01984459

<https://hal.science/hal-01984459>

Submitted on 17 Jan 2019

HAL is a multi-disciplinary open access archive for the deposit and dissemination of scientific research documents, whether they are published or not. The documents may come from teaching and research institutions in France or abroad, or from public or private research centers.

L'archive ouverte pluridisciplinaire **HAL**, est destinée au dépôt et à la diffusion de documents scientifiques de niveau recherche, publiés ou non, émanant des établissements d'enseignement et de recherche français ou étrangers, des laboratoires publics ou privés.

Introduction

- Small animal models of osteoarthritis (OA) do not mimic perfectly the complex conditions occurring in human OA.
- OA that closely resembles the human condition occurs naturally in primate. Non-human primates (NHP) could be a useful model for human OA.
- Non-invasive techniques such as 3D HR-MRI have been validated to directly assess the cartilage thickness on guinea pigs (1) and different cartilage compartment volumes on rat models of OA (2-3).
- Nonetheless, spatial resolution is limited compared to μ CT scanner that however needs contrast agent injected in the joint to depict cartilage limits.

Objectives

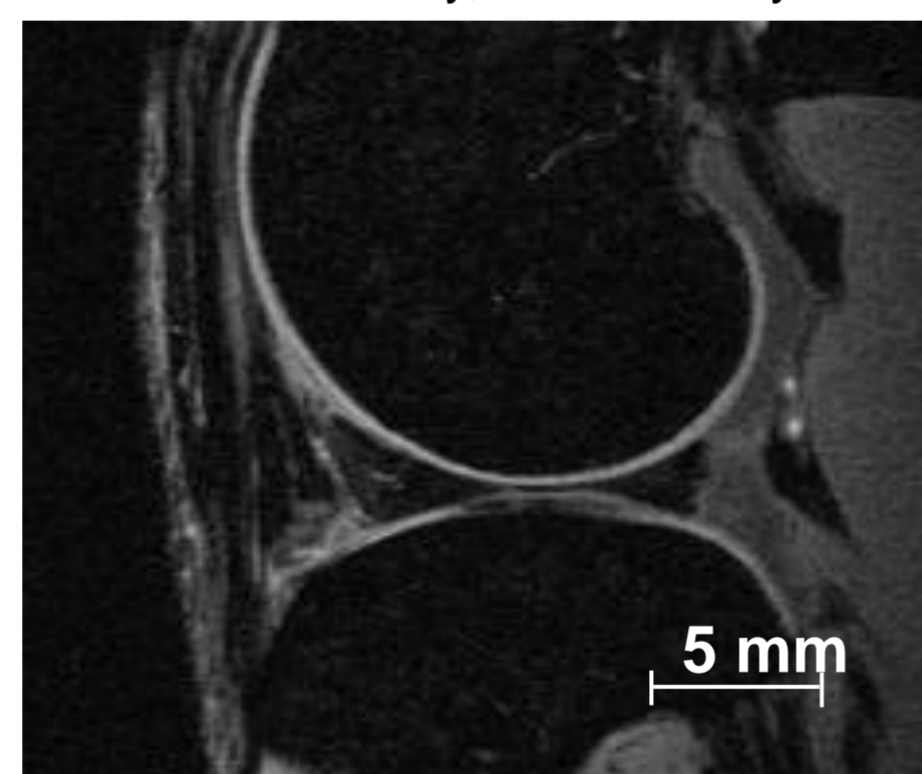
- The aim of this work, based on morphological parameters assessed on MRI and μ CT arthrography (μ CTA) acquisitions, was:
 - To assess the potential μ CTA protocol impact on the model follow-up
 - To compare quantifications results based on both imaging modalities
 - To characterize an induced model of OA by transection of the anterior cruciate ligament (ACL).

Material and method

- The ethical guidelines for animal experimental investigations were followed and the experimental protocol was approved by the Animal Ethics Committee from Ecole nationale vétérinaire de Lyon (VetAgro Sup), Marcy l'Etoile.
- Group 1&3 (n=3+3): control animals – only the right knee was injected with HexabrixTM for μ CTA imaging. MR imaging of both knees.
- Group 2 (n=6): ACL transection of the right knee only. Multi-modal imaging of both knees.
- Longitudinal follow-up using HR-MRI and μ CTA of 4 year old female cynomolgus at baseline, D15 (μ CTA only), D30, D60, D90, D180.

MRI acquisition protocol

- 1.5T Siemens Sonata system
- 3D water excitation FLASH sequence: 25° flip angle, 27 ms TR, 11.7 ms TE, 70 Hz/Pixel receiver bandwidth
- A pair of homemade two-channel array coil
- In-plane pixel: 112x131 μ m², partition thickness: 220 μ m
- scan time/knee : 20 min
- Total examination time: 90 min



μ CTA acquisition protocol

- 2mL HexabrixTM (320mg/mL) with 40/60 dilution in PBS was injected in the synovial capsule with 23G needle.
- GE Locus μ -CT (standard voltage and amperage)
- Isotropic voxel of 90 μ m
- Scan time for both knees : 15 min
- Total examination time: 30 min

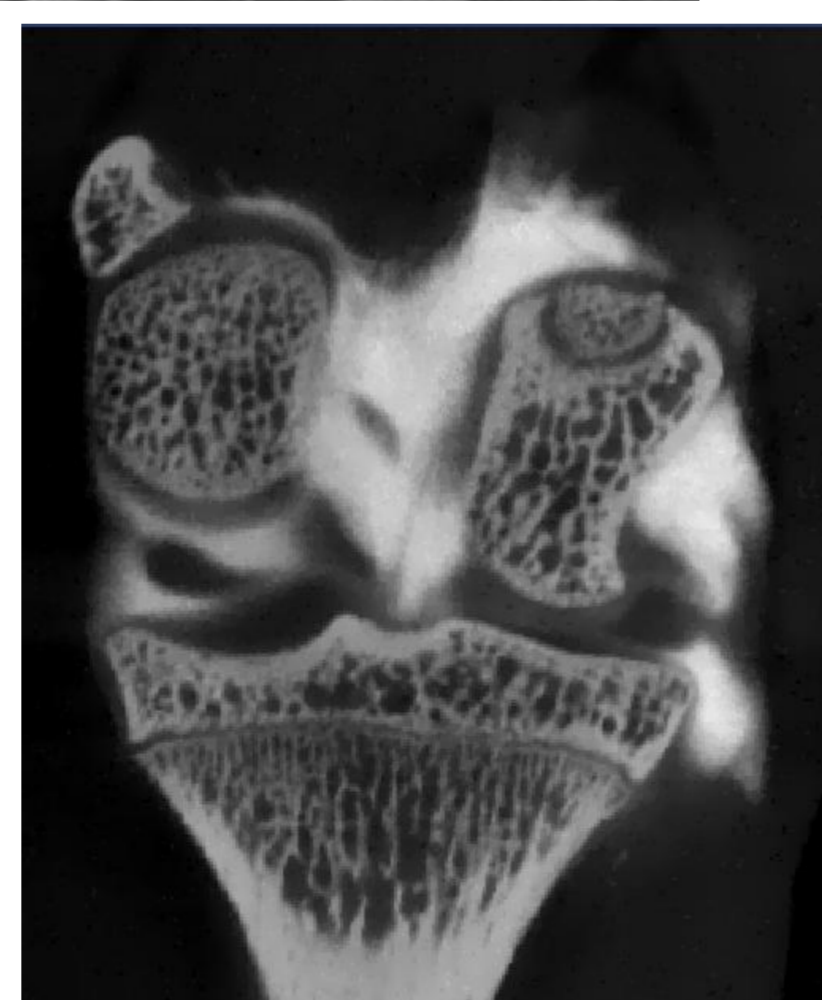
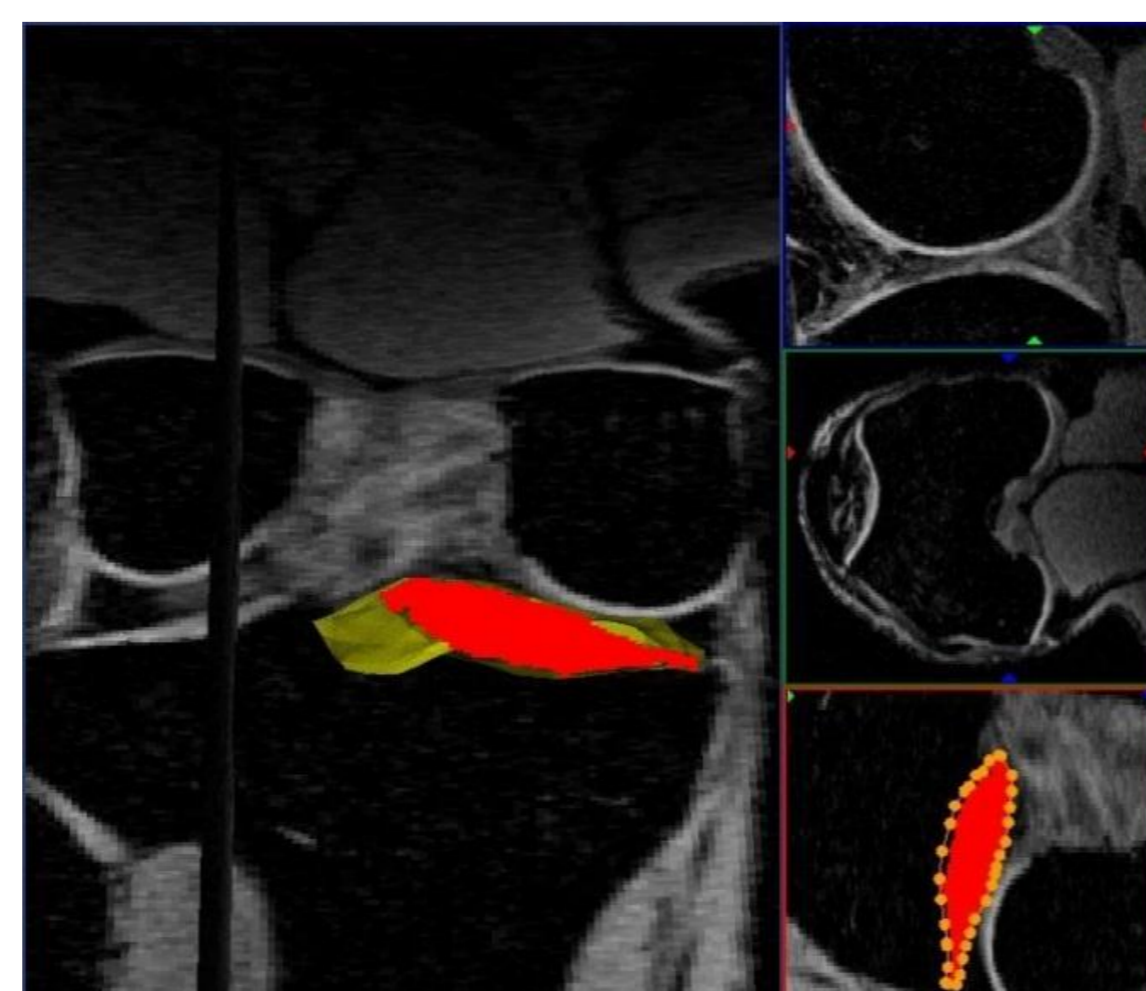
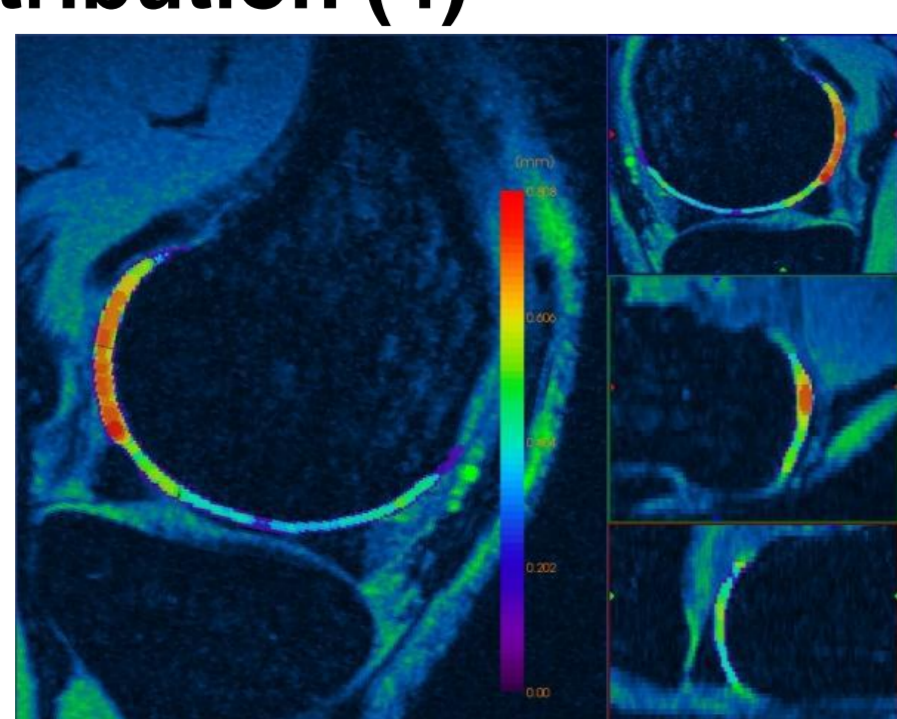


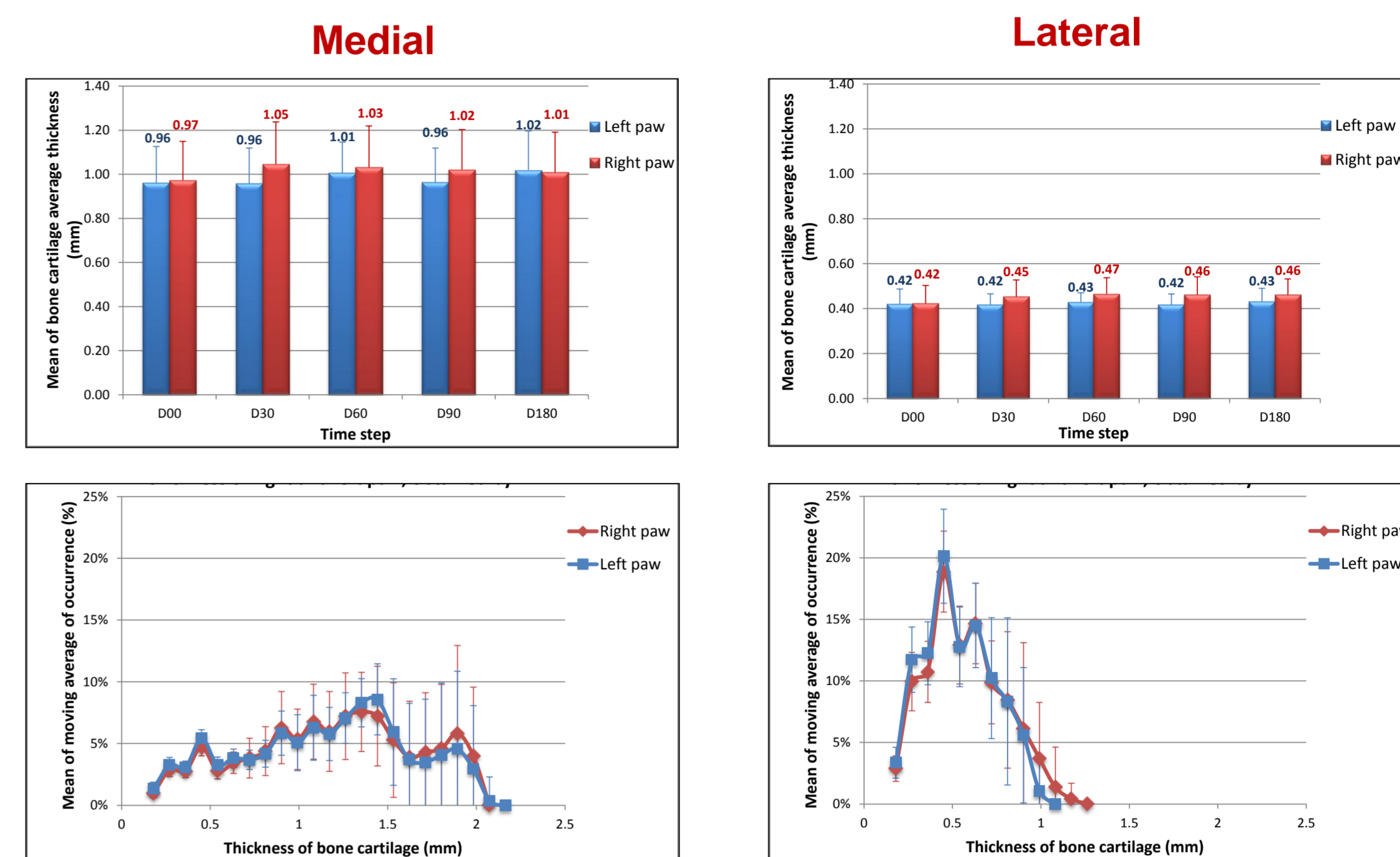
Image processing protocol and cartilage quantification parameters

- Binarization performed in two steps:
 - Manual segmentation
 - Global thresholding
- Thickness distribution (4)



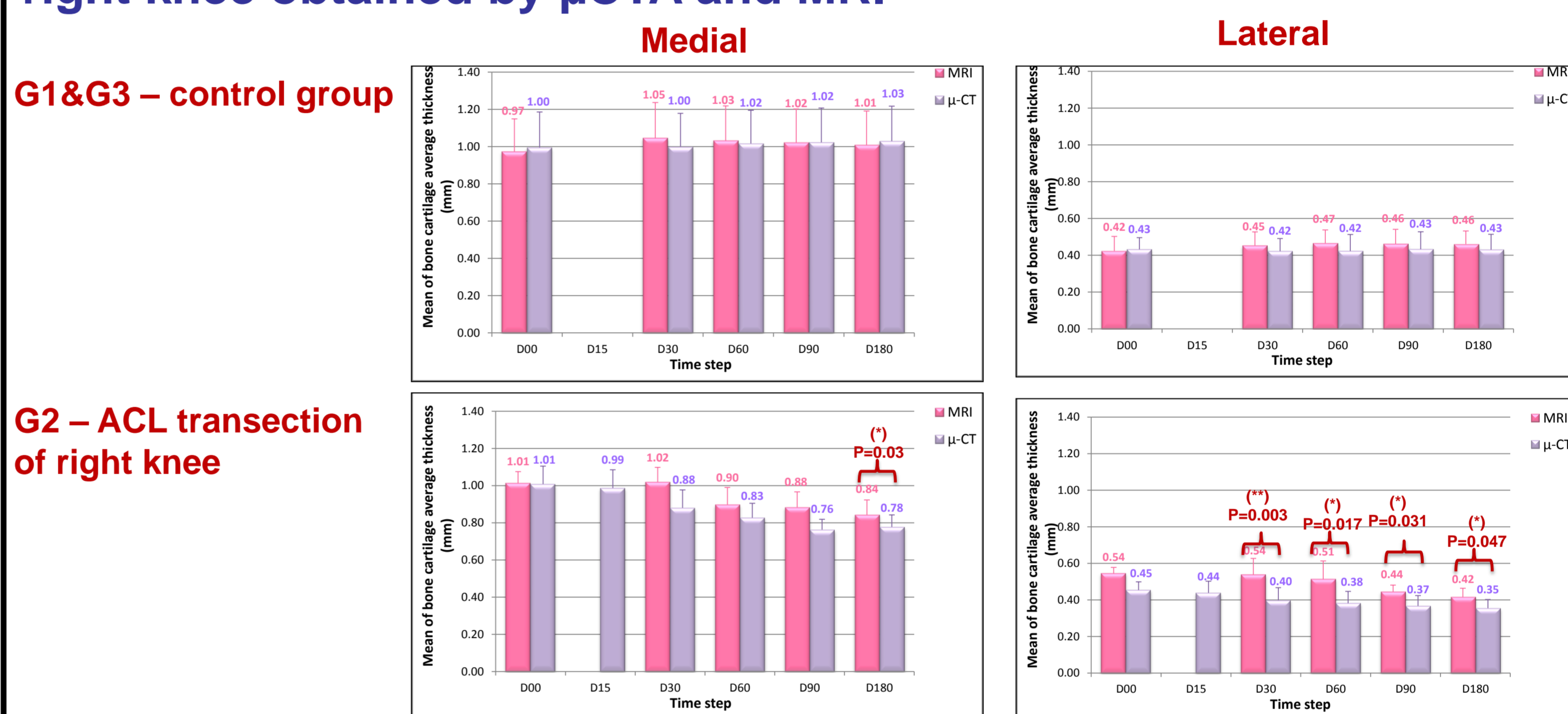
Results

G1 & G3 - MRI-based quantification of left and right tibial plateaus



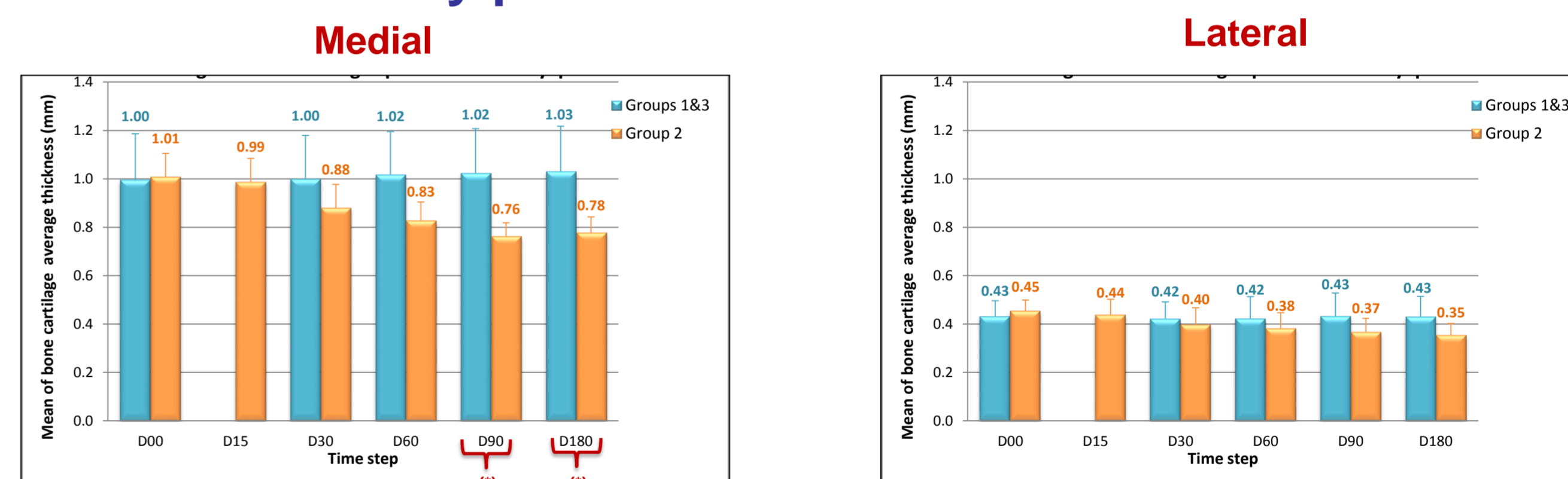
➔ Repeated injections for μ CTA have no impact on cartilage quantification

G1&G3 vs G2 - Mean of tibial cartilage average thicknesses of right knee obtained by μ CTA and MRI



➔ Similar trend between μ CTA and MRI with systematic thickness overestimation by MR

G1&G3 vs G2 - Mean of tibial cartilage average thicknesses of right knee obtained by μ CTA



➔ Significant decrease of cartilage thickness starting at D90 and D180 on NHP model of OA

Conclusion

- No differences were found with MRI examination between non injected and injected knees (required for the μ CTA protocol) over the time.
- No difference was found between μ CTA- and MRI-based cartilage thickness methods on control groups (G1&G3) since no residual measurement between both methods were found above the resolution of these techniques. Differences shown with G2 have to be further investigated.
- NHP model of OA was characterized by both imaging methods showing a monotone progression of the cartilage thinning up to $-24.6 \pm 5.7\%$ on D90 and $-27.2\% \pm 5.2$ on D180.

Perspectives

- MRI and μ CTA modalities are valuable to measure cartilage morphology.
- Additional information can be obtained:
 - Indirectly about cartilage structure (T2, T1rho...) with MRI
 - Subchondral bone density with μ CTA

References:

1. R. Bolbos et al., Osteoarthritis Cartilage 15:656-65 (2007).
2. A. Rengle et al., IEEE Trans Biomed Eng 56:2891-2897 (2009).
3. JC. Goebel et al., Rheumatology 49:1654-1664 (2010).
4. T. Hildebrand and P. Rueggsegger, J Microsc 185:67-75 (1997).

Acknowledgements: This work was funded by OSEO with grant E! 5671 from the Eurostars European program and performed within the framework of the LABEX PRIMES (ANR-11-LABX-0063) of Université de Lyon, within the program "Investissements d'Avenir" (ANR-11-IDEX-0007) operated by the French National Research Agency (ANR).