



HAL
open science

Does mechanical state of bark change with ontogeny ?

Romain Lehnebach, Fanny Zeline, Léopold Doumerc, Tancred Almeras,
Bruno Clair

► To cite this version:

Romain Lehnebach, Fanny Zeline, Léopold Doumerc, Tancred Almeras, Bruno Clair. Does mechanical state of bark change with ontogeny ?. 9th International Plant Biomechanics Conference, Aug 2018, Montréal, Canada. . hal-01983578

HAL Id: hal-01983578

<https://hal.science/hal-01983578v1>

Submitted on 16 Jan 2019

HAL is a multi-disciplinary open access archive for the deposit and dissemination of scientific research documents, whether they are published or not. The documents may come from teaching and research institutions in France or abroad, or from public or private research centers.

L'archive ouverte pluridisciplinaire **HAL**, est destinée au dépôt et à la diffusion de documents scientifiques de niveau recherche, publiés ou non, émanant des établissements d'enseignement et de recherche français ou étrangers, des laboratoires publics ou privés.

Does mechanical state of bark change with ontogeny?

A study on several tropical rainforest species



Romain Lehnebach and co-authors*

Laboratory of Mechanics and Civil Engineering, Montpellier, France

romain.lehnebach@umontpellier.fr



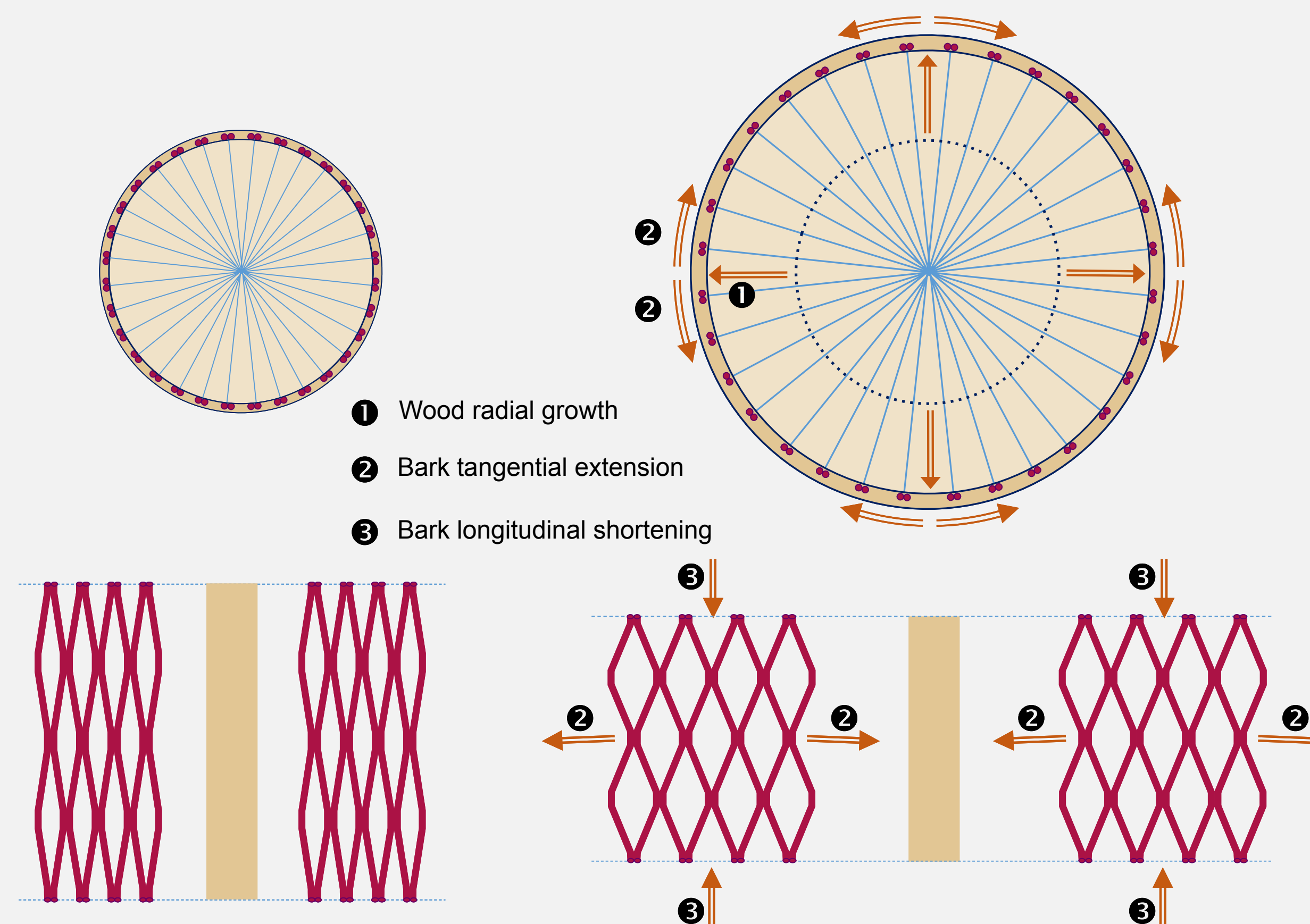
* Fanny Zeline, Léopold Doumerc, Tancrede Alméras, Bruno Clair

BACKGROUND

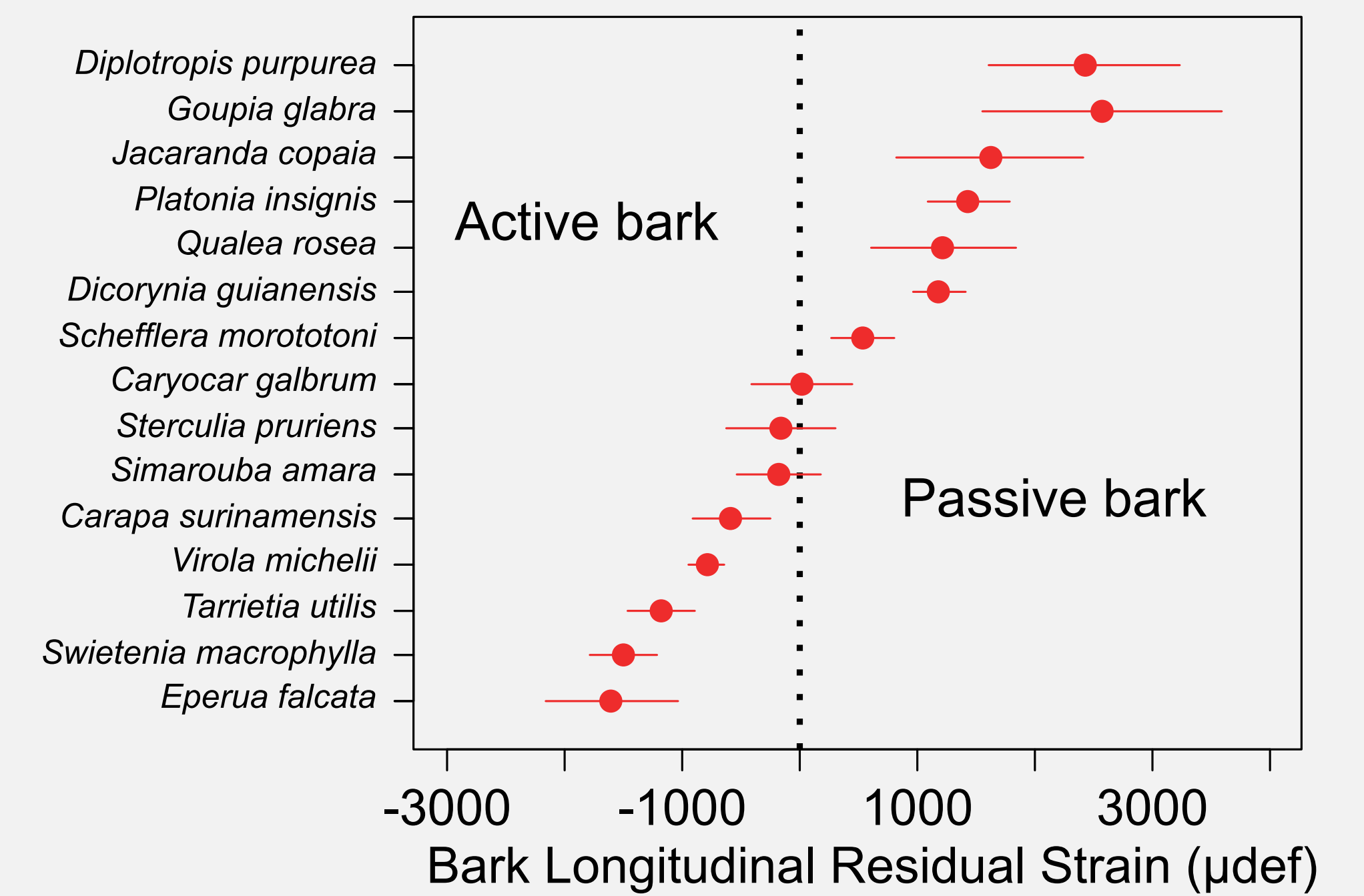
• **Inner bark** is implicated in many tree functions: transport, storage, protection ...

... but it is also able to **generate forces** to offset the effect of gravity:

B. Clair, R 32 "The bark side of the force", August 11, at 15:30



• Variation of bark strain in mature trees of tropical tree species



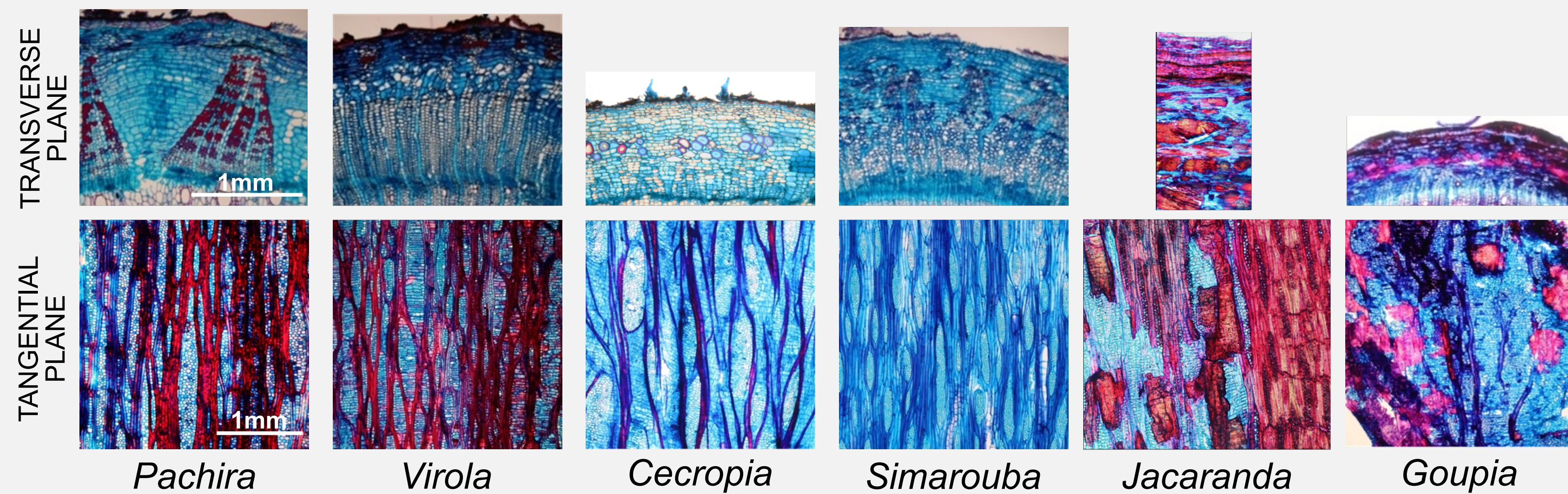
QUESTIONS

• How mechanical state of bark varies with tree size?

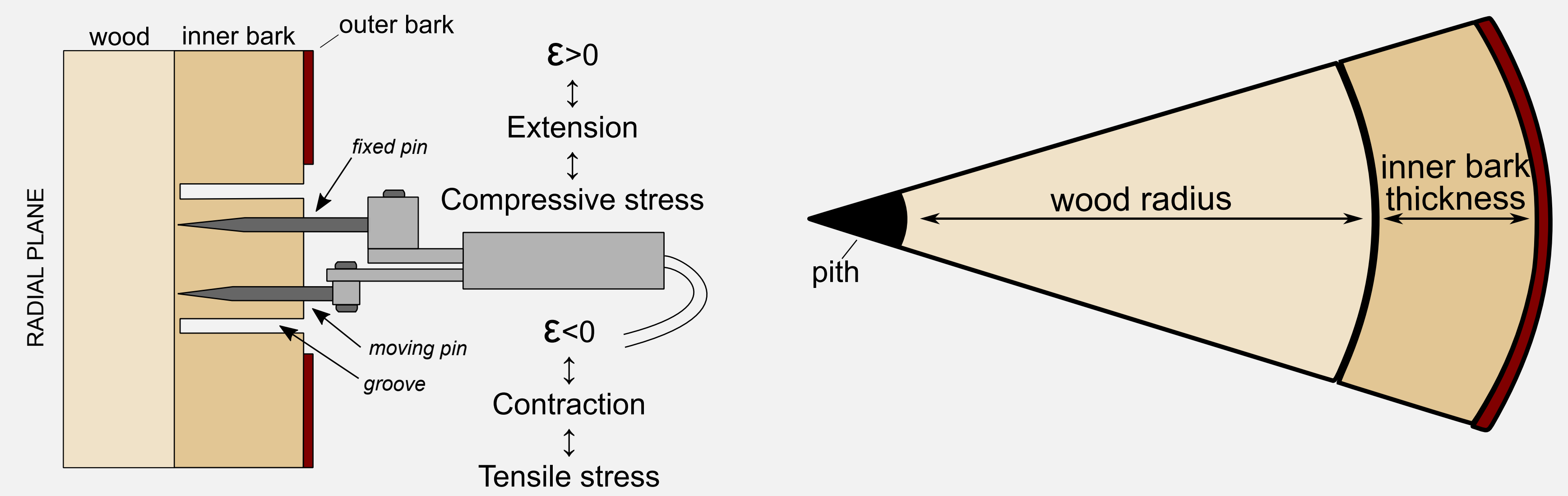
• Does the allometry between bark and wood differ between species with active and passive bark?

METHODS

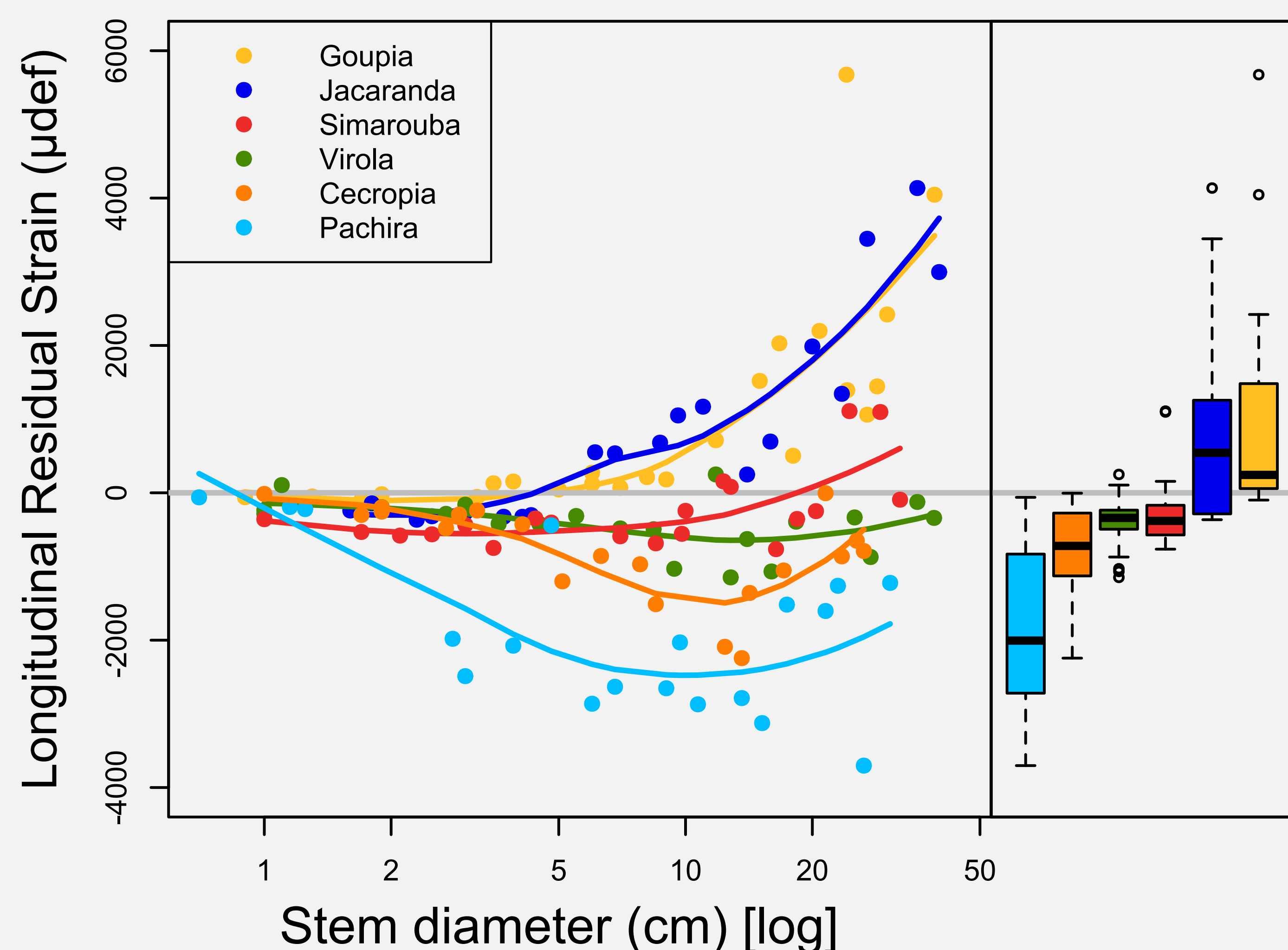
• Selection of 6 species differing by the anatomical structure of their bark



• Measurement of longitudinal residual strain and wood/bark dimensions of 20 trees per species

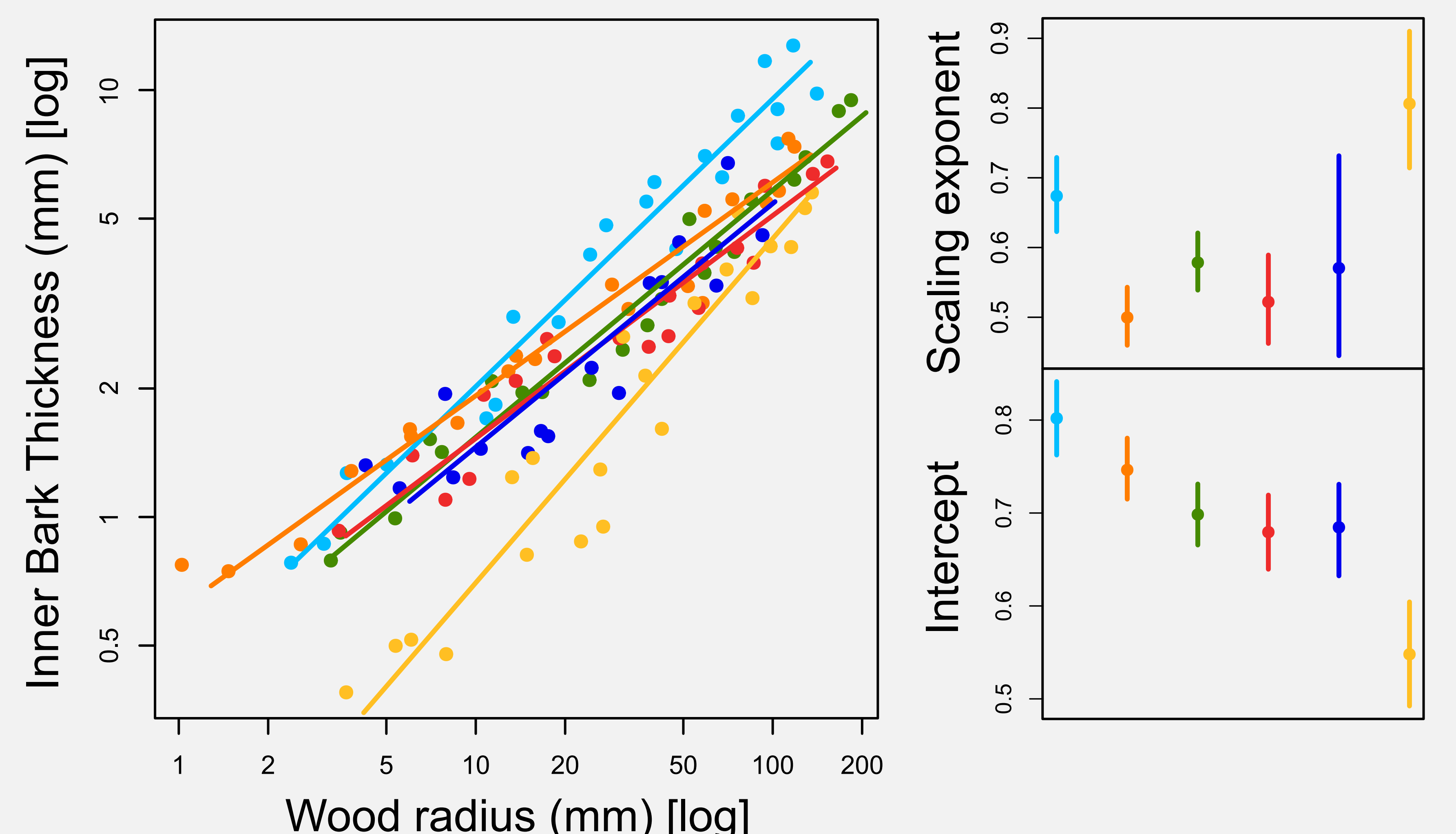


RESULTS



• **Bark Residual strain varies with tree size:**

- Compressive strain increases in *Jacaranda* and *Goupia*
- Tensile strain increases in *Pachira*, *Cecropia*, *Virola* and *Simarouba* but decreases when stem diameter > 10 cm



• **The relationship between bark thickness and wood radius is allometric:**

- Scaling exponent does not differentiate active and passive bark species
- Species with higher tensile strain have higher intercept value

CONCLUSION

- Species with active bark produce more bark per unit of wood than species with passive bark
- For species with active bark: the magnitude of tensile strain increases during young stages and decreases in older stages
 - Study of secondary changes in bark and numerical simulations are in progress to understand how the shift of bark mechanical state occurs during ontogeny