



HAL
open science

**Ice crystal sizes in high ice water content clouds. Part 2:
Statistics of mass diameter percentiles in tropical
convection observed during the HAIC/HIWC project.**

Delphine Leroy, Emmanuel Fontaine, Alfons Schwarzenboeck, John Walter Strapp, Alexei Korolev, Greg M. Mcfarquhar, R. Dupuy, Christophe Goubeyre, Lyle Lilie, Alain Protat, et al.

► **To cite this version:**

Delphine Leroy, Emmanuel Fontaine, Alfons Schwarzenboeck, John Walter Strapp, Alexei Korolev, et al.. Ice crystal sizes in high ice water content clouds. Part 2: Statistics of mass diameter percentiles in tropical convection observed during the HAIC/HIWC project.. Journal of Atmospheric and Oceanic Technology, 2017, 34 (1), pp.117-136. 10.1175/jtech-d-15-0246.1 . hal-01980993

HAL Id: hal-01980993

<https://hal.science/hal-01980993>

Submitted on 14 Jan 2019

HAL is a multi-disciplinary open access archive for the deposit and dissemination of scientific research documents, whether they are published or not. The documents may come from teaching and research institutions in France or abroad, or from public or private research centers.

L'archive ouverte pluridisciplinaire **HAL**, est destinée au dépôt et à la diffusion de documents scientifiques de niveau recherche, publiés ou non, émanant des établissements d'enseignement et de recherche français ou étrangers, des laboratoires publics ou privés.

Ice Crystal Sizes in High Ice Water Content Clouds. Part II: Statistics of Mass Diameter Percentiles in Tropical Convection Observed during the HAIC/HIWC Project

D. LEROY,^a E. FONTAINE,^a A. SCHWARZENBOECK,^a J. W. STRAPP,^b A. KOROLEV,^c G. MCFARQUHAR,^d
R. DUPUY,^a C. GOURBEYRE,^a L. LILIE,^e A. PROTAT,^f J. DELANOE,^g F. DEZITTER,^h AND A. GRANDIN^h

^a *Laboratoire de Météorologie Physique, CNRS/Université Blaise Pascal, Aubière, France*

^b *Met Analytics, Inc., Toronto, Ontario, Canada*

^c *Environment and Climate Change Canada, Toronto, Ontario, Canada*

^d *University of Illinois at Urbana-Champaign, Urbana, Illinois*

^e *Science Engineering Associates Inc., Mansfield Center, Connecticut*

^f *Research and Development Branch, Bureau of Meteorology, Melbourne, Victoria, Australia*

^g *Laboratoire Atmosphère, Milieux, Observations Spatiales, Guyancourt, France*

^h *Airbus Operation SAS, Toulouse, France*

(Manuscript received 8 December 2015, in final form 12 October 2016)

ABSTRACT

High ice water content (IWC) regions in mesoscale convective systems (MCSs) are a potential threat to commercial aviation, as they are suspected to cause in-service engine power-loss events and air data probe malfunctions. To investigate this, the high-altitude ice crystals (HAIC)/high ice water content (HIWC) projects set up a first field campaign in Darwin (Australia) in 2014. The airborne instrumentation was selected to provide the most accurate measurements of both the bulk total water content (TWC), using a specially developed isokinetic evaporator, and the individual ice crystals properties, using particle imaging probes.

This study focuses on determining the size ranges of ice crystals responsible for the mass in high IWC regions, defined here as cloud regions with IWC greater than 1.5 g m^{-3} . It is shown that for high IWC areas in most of the encountered MCSs, median mass diameters (MMDs) of ice crystals range from 250 to 500 μm and decrease with increasing TWC and decreasing temperature. At the same time, the mass contribution of the smallest crystals (below 100 μm) remains generally low (below 15%).

In contrast, data from two flight missions in a long-lasting quasi-stationary tropical storm reveal that high IWC values can also be associated with MMDs in the range 400–800 μm and peak values of up to 2 mm. Ice crystal images suggest a major growth contribution by vapor deposition (columns, capped columns) even for such larger MMD values.

1 Introduction

Reports from pilots of in-service engine ice crystal icing events encountered by commercial aircraft flying close to deep convective clouds highlight the need to gather more quantitative information about ice particle properties in mesoscale convective systems (MCSs). The ingestion of large mass concentrations of ice crystals is indeed suspected to cause jet engine power-loss events (Lawson et al. 1998; Mason et al. 2006). Mason et al. (2006) also contended that supercooled liquid water was

not required for ice crystal icing, and that events occurred in areas dominated by small ice crystals due to the pilot's "low" radar reflectivity, which was typically a "green" return (approximately 20–30 dBZ) or no return (less than approximately 20 dBZ) during events. However, the occurrence of such areas with high concentrations of ice crystals, as well as the corresponding ice crystal properties and formation processes in high ice water content (IWC) cloud regions, remains poorly documented.

In situ investigation of the microphysical properties of MCSs and in particular of potential high IWC areas is a significant challenge. First, specific operational procedures have to be put in place to ensure the safety of

Corresponding author e-mail: Delphine Leroy, d.leroy@opgc.univ-bpclermont.fr

the flight, as aircraft operation near convective cores could cause potential damage to the airplane. Second, in earlier research programs investigating deep convective ice clouds, the airborne instrumentation may have suffered from insufficiently accurate reference measurements of high bulk IWC values and individual ice crystal properties throughout the complete range of possible sizes. Third, focusing on regions of the highest IWC values in MCS clouds and gathering enough data for determining total water content (TWC) has not been a priority in past research programs. Indeed, during the Central Equatorial Pacific Experiment (CEPEX; McFarquhar and Heymsfield 1996), the Tropical Rainfall Measuring Mission (TRMM; Heymsfield et al. 2002), the African Monsoon Multidisciplinary Analysis (AMMA; Bouniol et al. 2010) and the Stratospheric-Tropospheric Analyses of Regional Transport 2008 (START08; Diao et al. 2013, 2015) campaigns, bulk measurements of (high) IWC in tropical anvils were not available. IWC values were mostly estimated/derived from particle imagery. For example, Mitchell et al. (2011) also derived IWC from particle imagery with maximum values of 0.1 g m^{-3} for the few cirrus clouds sampled during the Indirect and Semi-Direct Aerosol Campaign (ISDAC). Recently, Krämer et al. (2016) gathered data from 17 different field campaigns related to cirrus clouds but obtained only a few data values close to 1 g m^{-3} . Heymsfield et al. (2002) derived IWC from TRMM data and found that most of the IWC ranged between 0.1 and 0.5 g m^{-3} .

Indeed, reports of high TWC/IWC are mainly related to measurements close to active convective cells. McFarquhar and Heymsfield (1996, p. 2409) documented “extremely high IWC (1 g m^{-3}) near the convection” in the CEPEX database. Heymsfield et al. (2004, p. 986) reported that “exceptionally large IWCs of nearly 1 g m^{-3} were measured near the tops of the layers” during two spiral descents performed in convectively generated cirrus anvils during the Cirrus Regional Study of Tropical Anvils and Cirrus Layers–Florida–Area Cirrus Experiment (CRYSTAL-FACE). Larger values were found by McFarquhar et al. (2007) during the Bow Echo and Mesoscale Convective Vortex Experiment (BAMEX) field campaign, when computing the total mass content (TMC) from particle size measurements and reflectivities. Values reached 2.8 g m^{-3} during some spiral descents at the rear of convective lines. Other observations of occasional high IWC values (1 g m^{-3} and more) can be found (i) in Lawson et al. (1998) during the Cooperative Convective Precipitation Experiment (CCOPE) and CEPEX campaigns; (ii) in (Lawson et al. 2010) during Tropical Composition, Cloud and Climate Coupling (TC4) and

NASA African Monsoon Multidisciplinary Analysis (NAMMA) campaigns; and (iii) in Fontaine et al. (2014) for the *Megha-Tropiques* campaigns in Niger in 2010 and in the Maldives 2011. The IWC values of these studies were obtained by integrating particle size distributions derived from optical array probe imagery, sometimes combined with radar reflectivities, and also during TC4 using a counterflow virtual impactor (CVI); however, this probe is not suitable for studying high IWC, as the CVI saturated at IWC is larger than about 0.5 g m^{-3} (Lawson et al. 2010).

The multiyear international high-altitude ice crystals (Dezitter et al. 2013)/high ice water content (Strapp et al. 2016a) (HAIC/HIWC) field project was primarily designed to collect statistics on the levels of TWC and ice crystal sizes in high IWC regions of MCS convection to support the assessment of a new ice crystal icing certification envelope for ice crystals (Federal Aviation Administration NPRM 10–10 Appendix D; European Space Agency NPA 2011–03 Appendix P) and to provide data to advance scientific understanding of the high ice water content (high IWC) environment. Direct bulk IWC measurements were provided by the isokinetic evaporator probe (IKP2; Davison et al. 2016; Strapp et al. 2016b) that was specially designed for high IWC measurements.

The first flight campaign was conducted out of Darwin, Australia, in 2014. The Service des Avions Français Instrumentés pour la Recherche en Environnement (SAFIRE¹) Falcon 20 research aircraft was used to make in situ and remote measurements of the properties of oceanic MCSs, mostly at high altitudes. High IWC values were encountered during multiple flights with a maximum 5-s averaged value of 3.7 g m^{-3} . If we define for this study high IWC as measurements of bulk IWC values larger than 1.5 g m^{-3} , then the HAIC/HIWC dataset contains 2430 data points, with a duration of 5 s ($\sim 3 \text{ h}$, 20 min of flight), meeting this condition, providing a unique opportunity to investigate the properties of ice crystals in such regions.

This article focuses on ice particle size distributions (PSDs) and median mass diameters (MMDs) computed from optical array probe (OAP) images collected in those high IWC regions. A brief description of the 2014 HAIC/HIWC field campaign, the instrumental payload, and the processing of OAP images is given in the next section. The scientific results are then

¹French airborne environment research service, <http://www.safire.fr/web/index.php?lang=en>.

TABLE 1. Overview of the 23 flights of the HAIC/HIWC Darwin campaign. Peak TWC values stem from IKP2 measurements at a 5-s resolution. Italic values denote flights with maximum TWC below 1.5 g m^{-3} .

Flight No.	Date	Takeoff time (UTC)	Landing time (UTC)	Flight levels					Peak TWC (g m^{-3})	Localization
				-10°C	-20°C	-30°C	-40°C	-50°C		
1	16 Jan	0210	0515				X		—	Test flight in clear sky
2	16 Jan	2223	0025				X		2.7	Broome oceanic
3	17 Jan	0230	0510			X			1.6	Broome oceanic
4	18 Jan	2152	0045				X		1.7	Broome oceanic/coastal
5	21 Jan	0435	0715	X		X		X	—	Calibration flight in clear sky
6	23 Jan	2012	2320			X	X	X	3.1	Joseph Bonaparte Gulf
7	24 Jan	2008	2230			X	X		1.3	Broome oceanic/coastal
8	27 Jan	2043	2315				X	X	3.0	Joseph Bonaparte Gulf
9	28 Jan	2108	2344		X	X			1.9	Gove area
10	29 Jan	2006	2322			X	X	X	3.1	Gulf of Carpentaria
11	30 Jan	0114	0225		X				0.1	Transit flight
12	2 Feb	2035	2344			X	X		3.5	Joseph Bonaparte Gulf
13	3 Feb	0405	0632			X	X		3.7	Joseph Bonaparte Gulf
14	4 Feb	2035	2350			X			2.3	Gulf of Carpentaria
15	5 Feb	2328	0230			X			3.4	Gulf of Carpentaria
16	7 Feb	2102	0018				X		2.7	Broome oceanic
17	8 Feb	0158	0352			X	X		1.3	Transit flight
18	8 Feb	2048	0001			X			2.6	Broome oceanic/coastal
19	9 Feb	2048	0014				X	X	2.1	Broome oceanic
20	10 Feb	0207	0401			X			0.9	Transit flight
21	17 Feb	0627	0832			X			—	Calibration flight in clear sky
22	17 Feb	2115	0102			X	X		2.9	Darwin coastal
23	18 Feb	2137	0047	X	X				3.5	Tiwi Islands

presented in sections 3 and 4. The main conclusions are detailed in the last section.

2. The HAIC/HIWC dataset

a. The Darwin field campaign

1) OVERVIEW OF FLIGHTS AND SAMPLED CONDITIONS

The first international HAIC/HIWC field campaign took place in Darwin in 2014 during the monsoon season. Flight plans followed recommendations of the Engine Harmonization Working Group (EHWG), composed of engine manufacturers, airframers, aviation regulators, and government research agencies specially tasked to investigate weather-related engine events. The flight plans were based on the analysis of an engine power-loss event database and are described in detail in Strapp et al. (2016a). Main targets were MCSs with cloud anvils larger than 100 n mi (roughly 185 km) in horizontal extension, with a priority given to clouds forming over the ocean, but also with consideration for gathering similar data over land. Flight patterns favor long legs at constant altitude, similar to what would be flown by a commercial pilot, avoiding red echoes on the pilot's radar at flight level but trying to match engine event conditions by flying next to but at a safe distance

from areas with overshooting tops and areas of heavy precipitation below the aircraft—and if possible, intercepting updrafts and active convective cells.

Table 1 provides a quick overview of the campaign that started mid-January and lasted until the beginning of March. Twenty-three flights were performed with the French Falcon 20 aircraft. Flights 1, 5, and 21 were calibration flights mostly in clear sky and flights 11, 17, and 20 were transit flights returning from a scientific mission after refueling at another airport but still operating the cloud instrumentation in case interesting conditions were found. In the remaining flights, oceanic convection was primarily sampled, off the coast of Broome or Darwin, in the Joseph Bonaparte Gulf, and in the Gulf of Carpentaria. As Darwin is UTC + 9 h, 30 min, a 2000 UTC takeoff corresponded to 0530 local time (LT); the peak in oceanic convection is known to occur between 0300 to 0600 LT in the Darwin area (Protat et al. 2014). The EHWG recommended organization of the data collection at discrete temperature intervals from -10° to -50°C . During the Darwin flight program, the Falcon 20 mainly operated at the -40° and -30°C levels and to a lesser extent at -50° and -15°C . A study of the satellite imagery (not shown here) revealed that the sampled MCSs always lasted more than 10 h.

Darwin's monsoon is modulated by the Madden-Julian oscillation (MJO; Madden and Julian 1972),

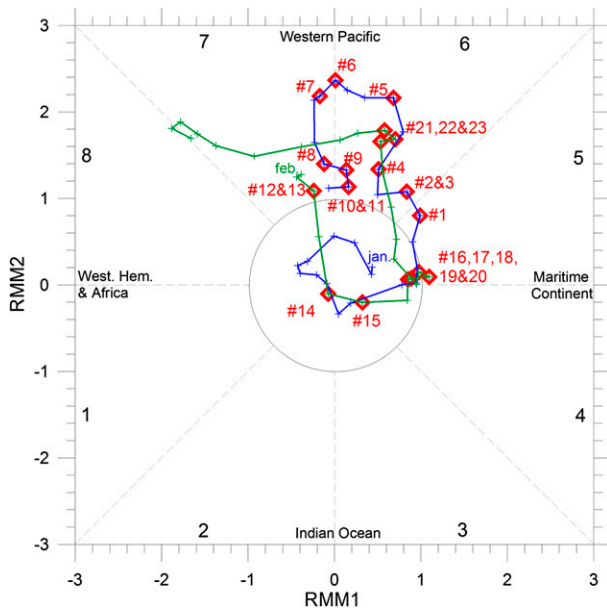


FIG. 1. Madden-Julian oscillation phase determined from the RMM indices of Wheeler and Hendon (2004) for January (blue) and February (green) 2014, issued by the BoM. Flight days are highlighted with a red diamond, labeled with the flight number.

which is monitored by the Bureau of Meteorology (BoM) through the Real-time Multivariate MJO (RMM1 and RRM2) indices (Wheeler and Hendon 2004). The evolution of RMM1 and RRM2 indices during January and February 2014 are displayed in Fig. 1, where red diamonds highlight days on which flights were performed (corresponding flight numbers appear in red). Figure 1 shows that more than half of the Darwin flights (13 out of 23) were made in phase 5 or 6, which corresponds to favorable conditions for convection over the northern part of Australia according to Protat et al. (2014). Six flights were made during weak MJO conditions, which still favor oceanic convection close to Darwin. The last four flights during MJO phase 7 favor convection over the eastern portion of Australia but with rainfall rates and frequency in Darwin still close to their climatological averages. Overall, the 17 cloud measurement flights of the Darwin HAIC campaign sampled MCSs linked to mostly favorable convective conditions but associated with different MJO phases.

2) AVAILABLE INSTRUMENTATION

The research aircraft was equipped with a state-of-the-art in situ microphysics package, including a cloud droplet probe (CDP-2; Lance et al. 2010), a 2D-stereo probe (2D-S; Lawson et al. 2006), and a precipitation imaging probe (PIP; Baumgardner et al. 2011). The CDP-2 provides droplet size distributions in the 2–50- μm range, whereas the 2D-S and PIP capture particle

images in the range of 10–1280 and 100–6400 μm , respectively, with resolutions of 10 μm (2D-S) and 100 μm (for PIP). Bulk TWCs were provided by both a Science Engineering Associates (SEA) Robust probe (Strapp et al. 2008; Grandin et al. 2014) and an IKP2 (Davison et al. 2016; Strapp et al. 2016b). In addition to the CDP-2, SEA liquid water content (LWC) sensors and a Rosemount Ice Detector (RICE; Baumgardner and Rodi 1989; Claffey et al. 1995; Cober et al. 2001) were installed to detect supercooled liquid water areas. Finally, a sophisticated cloud research radar (a multi-beam 95-GHz Doppler radar; Protat et al. 2009) provided 3D high-resolution characterization of the dynamical and retrieved microphysical properties of ice clouds. The next section gives some insights into the data postprocessing.

b. IWC measurements

1) IKP2 PROBE AND DATA PROCESSING

The IKP2 probe is a downsized version of a prototype isokinetic evaporator designed especially to make measurements in the high IWC/high speed/high-altitude environment up to at least 10 g m^{-3} at 200 ms^{-1} with a target accuracy of 20% (Davison et al. 2008). The probe measures total condensed water content and is close to a first-principles method due to the simple method of operation, the lack of empirical estimation, and the direct measurement of humidity to provide TWC. The instrument is mounted under the wing with an inlet well ahead of the wing leading edge, and it nearly isokinetically samples a 7-mm-diameter stream of liquid and ice particles without significant mass loss. The probe then evaporates all condensed water (solid, liquid) and subsequently measures the total water vapor before the air exits the probe. The total condensed water content is then found by subtracting the background water vapor in the air from the probe total water vapor measurement.

The development of the instrument and the uncertainties on the TWC measurements are described in Davison et al. (2016) and Strapp et al. (2016b). Davison et al. (2016) estimated from fluid dynamic simulations that capture efficiencies are larger than 99% for particles larger than 24 μm at sea level and larger than 15 μm at 12-km height. A large effort was expended to test the probe in wind tunnels to ensure reliable operation without saturation at high IWC, a problem that has been observed in other evaporators, such as the counterflow virtual impactor. Uncertainties in the IKP2 data processing mainly stem from estimating the background water vapor content, which leads to relatively small errors at colder temperatures but increasingly large errors

at warmer temperatures that currently limit the practical use of the probe in a tropical turbulent environment to about 0°C or colder. The system error analysis of Davison et al. (2016) predicts the target 20% accuracy for TWC values larger than 0.25 g m^{-3} and temperatures colder than -10°C . Errors reduce quickly with decreasing temperature and increasing IWC due to the decreasing importance of background water vapor, dropping to 3%–5% for TWC values larger than 0.5 g m^{-3} at -20°C . Strapp et al. 2016b presented comparisons of the IKP2 LWC and IWC to tunnel reference values, which in themselves are derived from instruments such as hot wires or bulk collectors and are thus subject to their own errors. Overall, comparisons support the IKP2 target accuracy of 20% or better, with the larger errors associated with the tunnel bulk collection IWC reference, which uses an ice capture cylinder method that is not well established or documented and was highly suspected to be subject to underestimation. During the Darwin experiment, an additional uncertainty was identified. Because of contamination of the background water vapor measurement by wetting in rain and by ice crystal injection, it was necessary to assume that in-cloud humidity was at ice saturation, an additional factor that is currently believed to lead to uncertainties of the order of 0.2, 0.1, and 0.05 g m^{-3} at -10° , -30° , and -40°C , respectively.

Table 1 gives the 5-s peak TWC values recorded by the IKP2 for each flight, when the aircraft was flying at a constant level as called for in the flight plans. Excluding calibration flights in clear sky, the 1.5 g m^{-3} threshold (which will be used later in this work to focus on high IWC areas) was reached in 16 flights of the 21 remaining. Setting a maximum threshold of 1.5 g m^{-3} excludes only flight 7 and transit flights 11, 17, and 20 from the analysis. The maximum 5-s TWC value reaches 3.7 g m^{-3} for flight 13.

2) REMOVAL OF MIXED-PHASE CLOUD AND SUPERCOOLED LIQUID WATER CASES

As supercooled liquid water is known to exist up to temperatures as cold as -40°C (Sassen and Dodd 1988; Heymsfield and Miloshevich 1993; Heymsfield et al. 2005; Rosenfeld and Woodley 2000), the presence of supercooled liquid water has to be identified and removed from the dataset, in order to focus on entirely glaciated cases for which the TWC from the IKP can be solely attributed to IWC.

The occurrence of liquid water in the dataset has been studied by combining the measurements from the CDP-2, RICE, and the 2D-S. Unfortunately, given the low levels of LWC observed, the SEA LWC sensor was unable to be used to estimate LWC due to the relatively

high levels of false response to ice crystals in the high IWC regions. Thus, for supercooled water droplet identification, the first stage consists of analyzing the CDP-2 number concentration, as droplet concentration is in general orders of magnitude higher than ice crystal concentration. All cases with CDP-2 total concentrations exceeding 10 cm^{-3} were studied, a threshold about 10 times lower than typical droplet concentrations (e.g., Rosenfeld and Woodley 2000). For each of these cases, any noticeable change in the RICE frequency is considered proof of liquid water. In addition, in the case of no RICE response, a comparison between the CDP-2 and 2D-S was performed. With its $10\text{-}\mu\text{m}$ resolution, even a $50\text{-}\mu\text{m}$ droplet will result only in a $5' \times 5'$ pixel image and thus the shape of the 2D-S images cannot help distinguish between liquid and ice particles. However, 2D-S number concentrations in the first five bins can confirm CDP-2 measurements. Good agreement in the CDP-2 and 2D-S PSDs (in terms of PSD shape and values) supports the presence of a liquid-dominated cloud, whereas a more flattened CDP-2 particle spectrum relative to the 2D-S spectrum is indicative of an ice cloud with a false CDP-2 response to ice crystals. Further details are given in the appendix.

In the Darwin dataset, the CDP-2 just occasionally exceeded $1\text{--}10 \text{ cm}^{-3}$ in number concentration, leading to only a few possible cases to study. Combining information from the RICE and the 2D-S for all those cases leads to the identification of only a few events of supercooled LWC, representing less than 3 min of the entire dataset. These events have been excluded from the analysis presented here. Thus, TWC measurements from the IKP2 are almost exclusively composed of IWC, as best as can be determined by the detection levels of the instruments.

c. PSD and MMD retrievals from OAP images

1) PARTICLE SIZE DEFINITION

Various size parameters have been defined in the literature to define the size of an ice crystal OAP 2D image. In this study, the 2D area-equivalent diameter D_{eq} , defined as the diameter of a circle of the same area as the 2D particle image, has been chosen,

$$D_{\text{eq}} = \sqrt{\frac{4S}{\pi}}, \quad (1)$$

where S is the total area of shadowed pixels.

The 2D area-equivalent diameter was chosen due to its unambiguous definition, where other definitions, such as “maximum diameter” D_{max} , can differ from one study to another. For example, McFarquhar and

Heymsfield (1996) defined the D_{\max} as the largest dimension along the main flow (l_x) or the length along the photodiode array (l_y), whichever was larger. Heymsfield et al. (2013, p. 4124) chose “the smallest diameter of a circle that fully encloses the projected 2D image.” The D_{\max} in Korolev and Isaac (2003) was calculated as the maximum D_y among all possible orientations of the recorded 2D image, where D_y is the particle size along the photodiode array. Wu and McFarquhar (2016) recently compared different D_{\max} definitions and demonstrated that number concentrations can differ by up to a factor of 6 for particles smaller than $200\ \mu\text{m}$ or larger than $2\ \text{mm}$, with IWCs varying by up to a factor of 3.

Moreover, King (1986) demonstrated that the flow features around the aircraft can lead to a preferential crystal orientation of recorded images; thus, l_x and l_y dimensions could be biased, especially when sampling high eccentricity images such as columns. Compared to l_x and l_y , the D_{eq} definition is less impacted by a preferential crystal orientation.

Finally, particle images truncated on either or both edges of the diode array have been processed according to Korolev and Sussman (2000) in order to retrieve “reconstructed” full-image sizes. This method applies an algorithm based on a circular image in order to reconstruct/compute the “true” particle dimension of truncated images. Using D_{eq} instead of D_{\max} enhances consistency between the retrieved size of complete and truncated images. Also, from $\text{MMD}_{\max}/\text{MMD}_{\text{eq}}$ comparisons, Leroy et al. (2016) suggested that the Korolev and Sussman (2000) reconstruction method in general leads to a more substantial underestimation of D_{\max} relative to D_{eq} .

2) PARTICLE SIZE DISTRIBUTION RETRIEVAL

The postprocessing applied to the HAIC/HIWC image dataset treats all major artifacts observed in OAP sampling. Details can be found in Leroy et al. (2016) and only the key processing steps are reviewed below.

Removal of noisy pixels has been performed according to Lawson (2011), even though this phenomenon is rare in the HAIC dataset, and the sizes of out-of-focus particles are corrected according to Korolev (2007). The most recently available antishattering tips were employed to greatly reduce the number of shattering and splashing events (Korolev et al. 2013). An analysis of particle interarrival times is used to further remove the remaining events (Field et al. 2006; Baker et al. 2009; Lawson 2011; Korolev and Field 2015). The interarrival time distribution is computed every 1 s and is used to determine the cutoff time that is subsequently applied to separate natural particles from shattered ones.

The PSD computation requires both the individual bin counts and the sample volume (SV) of the probe, which is the product of the sample area (SA), true airspeed (TAS), and sample time (Heymsfield and Parrish 1978),

$$\text{SV} = \text{SA} \times \text{TAS} \times dt. \quad (2)$$

Sample time excludes overload time, that is, the time when the probe is not able to record images due to the unloading particle images data. Overload times are directly recorded by the 2D-S probe, whereas the PIP overload time fraction is estimated by computing the ratio of the number of recorded images to the total number of particles crossing the laser beam (the latter being an independent measurement of the PIP not subject to overload).

To compute the SA, the depth of field (DOF) and the effective beamwidth W are needed, and both are size dependent (e.g., Brenguier et al. 2013),

$$\text{SA} = \text{DOF} \times W \quad (3)$$

The depth of field is computed according to each probe manufacturer’s definition (SPEC 2011; DMT 2009). When taking into account complete plus truncated images, the effective array width is defined as

$$W = (N_{\text{PH}} + N_y - 1)\Delta x, \quad (4)$$

where N_{PH} is the number of photodiodes across the array, Δx is the probe’s pixel size resolution, and N_y is the number of shaded pixels along the photodiode array direction.

The PSDs from the 2D-S and the PIP are merged into a composite particle size distribution ranging from $10\ \mu\text{m}$ up to $12.8\ \text{mm}$ at a 5-s time resolution. The 2D-S data are used below $800\ \mu\text{m}$, the PIP above $1200\ \mu\text{m}$ and complementary linear weights for both probes are applied over the range of $800\text{--}1200\ \mu\text{m}$.

3) MASS-SIZE RELATIONSHIP AND MMD COMPUTATION

To convert PSD number concentrations into mass-size distributions, mass-size relationships are commonly applied. Then, the MMDs are deduced from the mass distributions. The MMD is the size in the mass distribution at which 50% of the ice mass is contained in smaller particles and 50% in larger particles.

Mass-size relationships are usually represented as a power-law relationship, $m = \alpha D^\beta$. Erfani and Mitchell (2016) recently proposed polynomial curve fits in the form of $\ln m = a_0 + a_1 \ln D + a_2 (\ln D)^2$, but they also demonstrated how to convert this expression to a

simpler power law for application in cloud microphysical schemes and how to compare other power-law mass–size relationships that are common in the literature (Locatelli and Hobbs 1974; Brown and Francis 1995; Mitchell 1996; McFarquhar et al. 2007; Fontaine et al. 2014; Heymsfield et al. 2010; Cotton et al. 2013). Individual power-law mass relationships are often established for different crystal types (or shapes) present in the atmosphere; although in practice, single relationships with constant values of α and β are commonly used for all ice crystal data of an entire flight, regardless of crystal type.

Leroy et al. (2016) tested the sensitivity of the MMD to the chosen mass–size relationship and demonstrated that MMDs are very sensitive to the value of the β parameter. Therefore, the value of the β exponent should be determined with caution. In this regard, Leroy et al. (2016) proposed a method to deduce β from the projected area–size and perimeter–size relationships that can be directly deduced from the OAP images. The β parameter is thus no longer constant but varies in time according to the particle morphological information extracted from the OAP images. Leroy et al. (2016) illustrated that this method interestingly led to MMD values that were rather similar for various initial size definitions (D_{\max} , D_{eq} , and others), which was not necessarily the case when using constant values for β from the literature. For this reason, the time-dependent retrieval of the β exponent from Leroy et al. (2016) was adopted for this study. Then, the TWC measurements from IKP2 are used to constrain the prefactor α ,

$$\int_0^{\infty} N(D)\alpha D^{\beta} dD = \text{TWC}. \quad (5)$$

Apart from the mass–size relationship, MMDs are mainly controlled by the PSDs themselves. Sensitivity studies demonstrate that the MMD value is relatively insensitive to even very large increases in the concentrations of the smallest particle sizes (e.g., below $50 \mu\text{m}$). In contrast, MMDs are much more sensitive to the slope of the tail of the PSD. We estimate that the mean MMD error of this study due to the choice of the image analysis method is less than 5%, corresponding to a mean absolute error of roughly $30 \mu\text{m}$ on average MMD values of roughly $600 \mu\text{m}$.

3. Detailed analysis of high IWC regions in two contrasting flights

From the entire HAIC/HIWC dataset, flights 13 (on 3 February) and 16 (on 7 February) were selected to first

present two contrasting examples of the first detailed analysis of the MMDs and PSDs in high IWC regions. A more statistical analysis of the whole dataset will be presented in section 4 of this study.

a. Synoptic situation

Figure 2 presents the analysis charts from the Australian Bureau of Meteorology describing the synoptic situations corresponding to flights 13 and 16. For both cases, two lows are present on the northern part of Australia, one close the Joseph Bonaparte Gulf (southwest of Darwin) and the other one located over the Gulf of Carpentaria (east of Darwin). Both low pressure systems have a minimum pressure close to 994 hPa; however, the horizontal pressure gradient is much higher in flight 13 than in flight 16.

The Multifunctional Transport Satellite (MTSAT) infrared brightness temperatures observed during the flight missions are shown in the lower panels of Fig. 2. From the analysis of the MTSAT images, the scale of the MCS cloud shield is estimated to be about 650 km for flight 16, which is approximately 100 km larger than for flight 13, and the convective activity appears to last almost 14 h during flight 13, which is roughly 1.75 times longer than for flight 16. In fact, the same MCS observed during flight 13 was sampled earlier in the day during flight 12. Flight 12 had been performed in the postmaturing stage and even the decaying stage of the storm, and a significant flare-up after the first landing led to the launch for flight 13.

According to flight reports, cloud passes for flights 12 and 13 were characterized by low turbulence, low lightning activity, and high IWC. Maximum 5-s averaged IWC reached 3.5 g m^{-3} during flight 12 (cf. Table 1) and sustained high IWC areas were sampled again during flight 13, with peak 5-s values exceeding 3.5 g m^{-3} , as can be seen in the lower-left panel of Fig. 2, showing IKP2 TWC measurements during flight 13.

For flight 16, continuous convection had been observed overnight near the low-level center, with cloud tops reaching -90°C with little lightning activity. The convective area sampled during flight 16 was at a mature stage but with lightning starting to decay. The TWC showed sustained periods of high IWC with peak values larger than 2.5 g m^{-3} (see lower-right panel of Fig. 2). Toward the end of the flight the MCS collapsed.

On the one hand, oceanic MCSs sampled during flight missions 13 and 16 have some similarities: both were associated with a low pressure system and both were made during an active stage of the cloud life cycle with high peak and sustained values in IWC. On the other

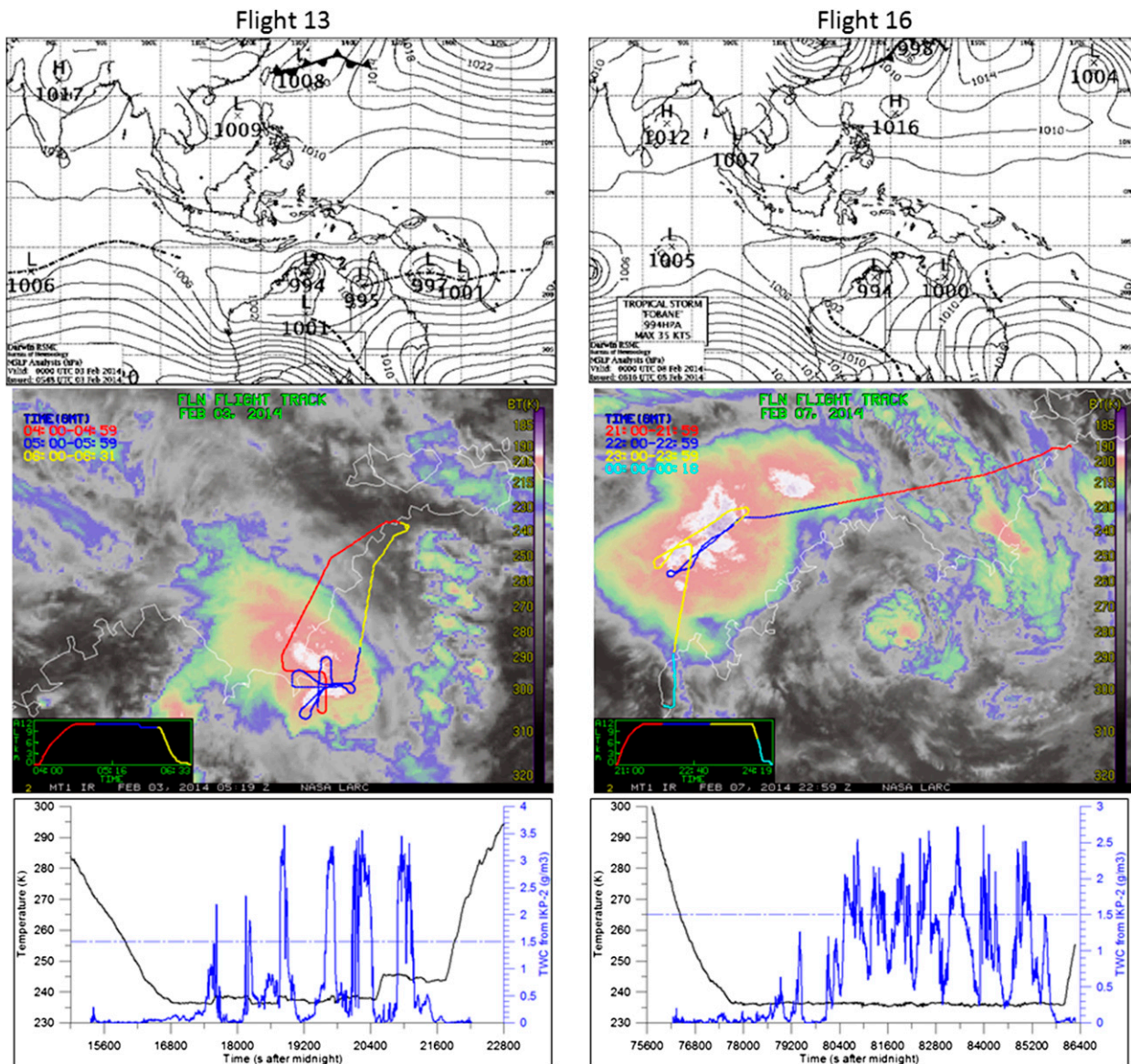


FIG. 2. (top) The 0000 UTC analysis chart (issued by BoM) for (left) flight 13 and (right) flight 16. (middle) MTSAT image brightness temperature of the sampled cells overlaid onto the Falcon 20 flight track [courtesy of NASA Langley Research Center (LaRC)]. The flight track is color coded for flight time. (bottom) Time series of temperature (K) in black and 5-s TWC measurements from the IKP2 in blue. Dashed-dotted blue lines indicated the 1.5 g m^{-3} threshold.

hand, synoptic conditions differ somewhat, with the MJO phase analysis classifying flight 13 as having MJO phase 7 conditions and flight 16 as having weak MJO conditions (cf. Fig. 1). However, the main difference is found in the lifetimes of the MCSs. Like most of the Darwin flights, the flight 16 MCS fits the typical early morning oceanic convective case described by Protat et al. (2014) with peak convective activity during the night and subsequent morning system decay. In contrast, the MCS sampled during flights 12 and 13 is more unusual in the sense that convection reactivated

in the morning instead of collapsing. No other MCS sampled during the Darwin campaign exhibited such behavior.

b. Characteristics of high IWC regions

Figures 3 and 4 illustrate the time evolution of TWC (blue line) and MMD_{eq} (black line) for selected flight sequences of flights 13 and 16, respectively, near the -40°C level for both flights. In addition to MMD_{eq} and in order to investigate the relative contribution of the smallest and largest ice crystals to the

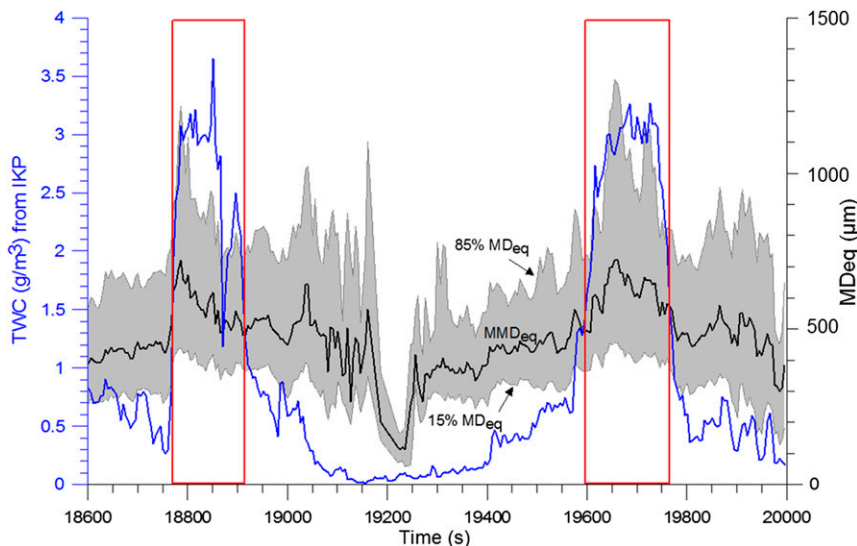


FIG. 3. Example of high IWC areas (red boxes) sampled during flight 13 close to -37°C . The blue line represents the time evolution of the TWC measured with the IKP2. The MMD_{eq} values appear as a black line, and the gray area spans between the 15% and 85% MD_{eq} .

hydrometeor mass, the D_{eq} crystal diameters corresponding to the 15th and 85th percentiles of the total water content (denoted 15% MD_{eq} and 85% MD_{eq} , respectively) have been computed and are displayed in both figures. The resulting gray shaded areas delineating the size range of particles between 15% MD_{eq} and 85% MD_{eq} thus account for 70% of the total mass.

For both flights, two regions of sustained TWC larger than 1.5 g m^{-3} are highlighted by red rectangles.

Comparing Figs. 3 and 4, we can see that areas of sustained high TWC (*all ice*) beyond 1.5 g m^{-3} are longer lasting for flight 16 (roughly 5 min, or approximately 55 km) than for flight 13 (roughly 3 min, or 35 km).

For flight 13 (cf. Fig. 3), MMD_{eq} , 15% MD_{eq} , and 85% MD_{eq} all increase when entering a high IWC area relative to the surrounding lower IWC areas. While typical MMD_{eq} values are between 300 and 500 μm outside the high IWC regions, they increase to roughly

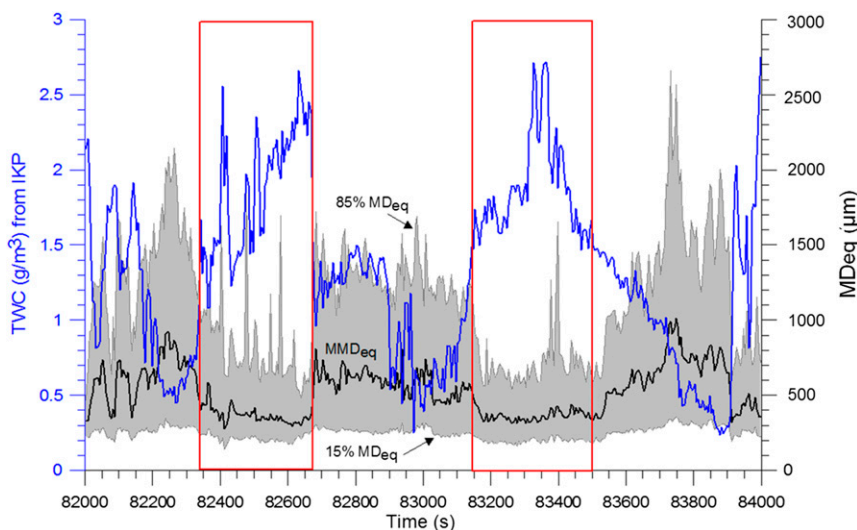


FIG. 4. Example of high IWC areas (red boxes) sampled during flight 16 close to -37°C . The blue line represents the time evolution of the TWC measured with the IKP2. The MMD_{eq} values appear as a black line, and the gray area ranges between the 15% and 85% MD_{eq} .

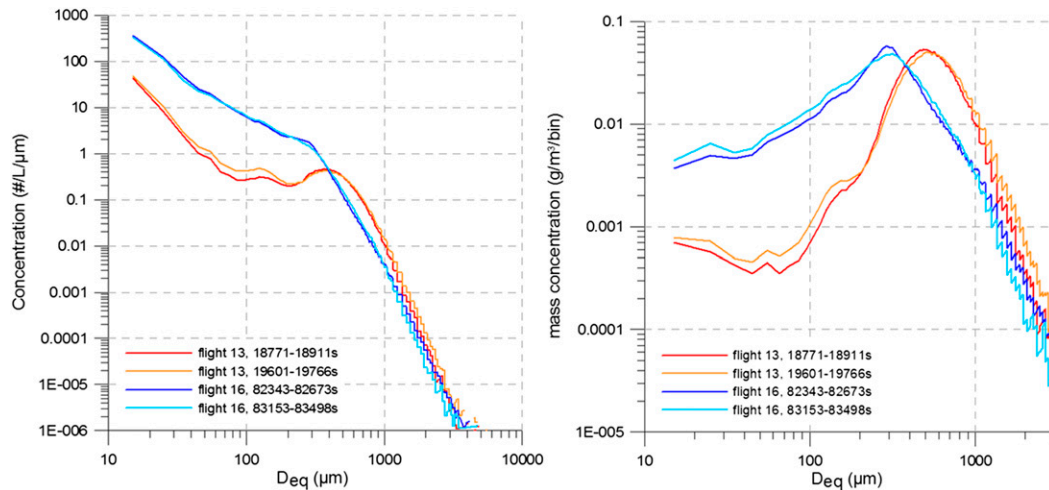


FIG. 5. (left) Mean particle number and (right) mass–size distributions for the high IWC areas of flight 13 (orange/red) and flight 16 (blue) defined in Figs. 3 and 4.

500–700 μm inside. In contrast, during flight 16 (cf. Fig. 4) within a more classical oceanic MCS, MMD_{eq} values are mostly greater than 500 μm outside the high IWC areas and clearly decrease to less than 500 μm when TWC exceeds 1.5 g m^{-3} . Moreover, the span between 15% MD_{eq} and 85% MD_{eq} is significantly reduced, with a large decrease in 85% MD_{eq} from greater than 1–1.5 mm outside to roughly 700 μm inside the high IWC area. Overall, high IWC areas sampled during flights 13 and 16 have clearly different microphysical characteristics relative to their surrounding areas. These two example flights exhibit opposite behavior of crystal sizes decreasing with increasing TWC for flight 16, while increasing for flight 13.

Figure 5 shows the mean particle number and mass–size distributions for the four high IWC regions from Figs. 3 and 4 (red rectangles). Number PSDs and mass–size distributions are colored in blue for flight 16 and in orange/red for flight 13. Concentrations of particles smaller than 300 μm are almost one order of magnitude smaller for flight 13 than for flight 16. Consequently, the bin mass concentrations for particles smaller than 300 μm are also roughly one order of magnitude smaller. The mass size distribution also show distinct diameter modes centered around 300 μm and close to 500 μm for flights 16 and 13, respectively.

This brief analysis of only four high IWC regions from the flight program demonstrates that the microphysical characteristics of high IWC areas can be quite different from one convective system to another one. Some high IWC regions contain rather small ice crystals, whereas others can contain relatively large ones. The next section summarizes the overall HAIC/HIWC dataset in order to produce statistically significant

results on the ice crystal characteristics in high IWC regions with TWC larger than 1.5 g m^{-3} .

4. General analysis of high IWC regions

a. Median mass diameters

Figure 6 displays MMD_{eq} as a function of TWC for each flight of the Darwin campaign. Data were first sorted into 0.5 g m^{-3} TWC bins centered on 0.5, 1, 1.5 g m^{-3} , etc., up to 3 g m^{-3} . Then for each TWC bin, average MMD_{eq} and temperature values were computed only if the number of available data points (5-s average) exceeds 20. Calibration flights 1, 5, and 21 were excluded along with transit flight 11, which had a maximum 5-s TWC of only 0.1 g m^{-3} (cf. Table 1). Transit flight 17 produced only one data point in the 0.5 g m^{-3} bin.

Flights 13 and 16, detailed in the previous section, appear in black and olive green, respectively. Figure 6 reveals that the large majority of flights follow a trend similar to flight 16: averaged MMDs tend to slightly decrease with increasing TWC. For TWC larger than 1.75 g m^{-3} (i.e., TWC classes centered on 2 and 2.5 g m^{-3}) mean MMD_{eq} values range between 325 and 475 μm for most flights, and only flights 12 and 13 contain significantly higher mean MMD_{eq} values exceeding 600 μm . Flight 12, performed in the same MCS as flight 13, shows the same trend of increasing mean MMD_{eq} with increasing TWC. This convective storm, sampled twice during flights 12 and 13, clearly reveals different microphysical characteristics relative to almost all other flights.

If we temporarily exclude flights 12 and 13, then a temperature dependency of the MMD_{eq} values is visible in Fig. 6. Samples at a mean temperature between -35°C and -45°C in dark blue are associated with smaller

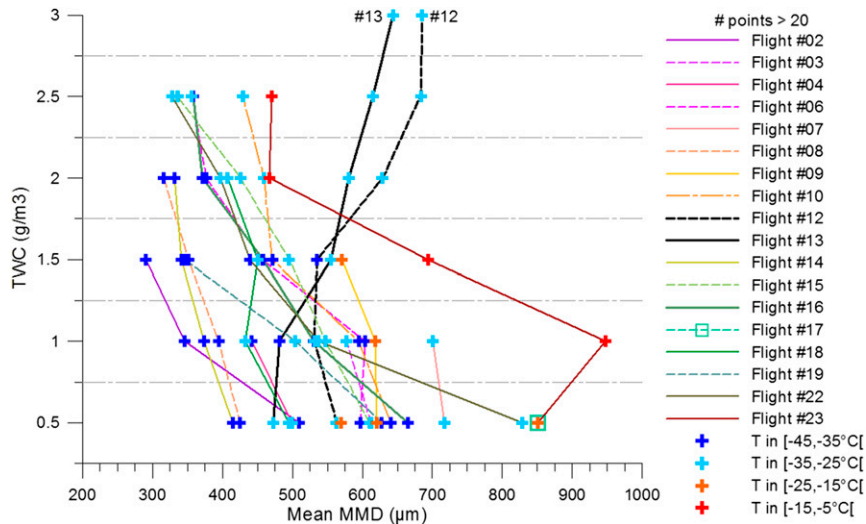


FIG. 6. Mean MMD as a function of TWC measured by the IKP2. Color lines and types (continuous and dashed) correspond to individual flights of the Darwin campaign. Symbols are colored according to the mean temperature of the respective measurements (with blue corresponding to cold temperatures and red to warmer ones).

MMD_{eq} values: flights 2, 8, and 14, providing measurements at a mean temperature colder than -35°C , are associated with average MMD_{eq} values lower than $450\ \mu\text{m}$. In the temperature range of -35°C to -25°C , MMD_{eq} values tend to increase with increasing temperature, and are in the range of $400\text{--}750\ \mu\text{m}$ for TWC values in the 2.5 and $0.5\ \text{g m}^{-3}$ bins. Data points at temperatures warmer than -25°C are associated with MMD_{eq} values larger than $550\ \mu\text{m}$. Flight 23, which is the only flight providing data close to the -10°C level (cf. Table 1), reveals the largest MMD values for all TWC ranges (excluding flights 12 and 13). Thus, for most of the dataset, the general trend is that smaller MMD_{eq} values are associated with colder temperatures.

b. 15th and 85th percentiles

To identify the range of sizes that contributes most to the total mass, in Fig. 7 the 15%MD_{eq} (top) and 85%MD_{eq} (bottom) are added. One major result from Fig. 7 (top) is that for all data points with TWC exceeding $1.5\ \text{g m}^{-3}$, the corresponding 15th percentile mass diameter (15%MD_{eq}) is always larger than $100\ \mu\text{m}$. In other words, the contribution of ice crystals smaller than $100\ \mu\text{m}$ to the total ice mass is less than 15%, even for high IWC values beyond $2\ \text{g m}^{-3}$.

Considering the flights collectively, 15%MD_{eq} ranges between 100 and $450\ \mu\text{m}$, whereas 85%MD_{eq} is more widely spread with values spanning from $600\ \mu\text{m}$ to $2\ \text{mm}$. For the majority of the flights (excluding the black lines of flights 12 and 13), Fig. 7 reveals that both 15%MD_{eq} and 85%MD_{eq} slightly decreases with increasing TWC,

indicating a progressively larger contribution of small ice crystals to IWC with increasing IWC. The figure also reveals a narrowing of the range of sizes comprising the mass with increasing IWC. For example, for a TWC close to $1\ \text{g m}^{-3}$, 15%MD_{eq} and 85%MD_{eq} span between approximately $150\text{--}400\ \mu\text{m}$ and $650\ \mu\text{m}\text{--}2\ \text{mm}$, respectively, whereas the corresponding spans at $2\ \text{g m}^{-3}$ are approximately $175\text{--}275\ \mu\text{m}$ and $600\ \mu\text{m}\text{--}1.2\ \text{mm}$, respectively.

In addition, the temperature (altitude) sensitivity of the mass distribution in the smaller crystal sizes is noticeable in the 15%MD_{eq} plot (top). As in Fig. 6, and again excluding flights 12 and 13, blue points correspond to the coldest temperatures and are associated with the smallest 15%MD_{eq} values, whereas the largest 15%MD_{eq} values are associated with the orange and red colors, corresponding to temperatures warmer than -25°C . The correlation of the 85%MD_{eq} with temperature is less clear: the largest values are still obtained for the -10°C temperature range; however, the smallest values appear to be most frequently at temperatures close to either -30° or -40°C .

Finally, Fig. 7 confirms the quite different nature of flights 12 and 13. For these two flights, the behavior of both the 15%MD_{eq} and 85%MD_{eq} as a function of TWC follows the opposite trend, with increasing 15%MD_{eq} and 85%MD_{eq} as TWC increases.

c. Discussion

1) MCS OF FLIGHTS 12 AND 13

The MCS sampled twice on the same local day between 2 and 3 February (during flights 12 and 13) shows

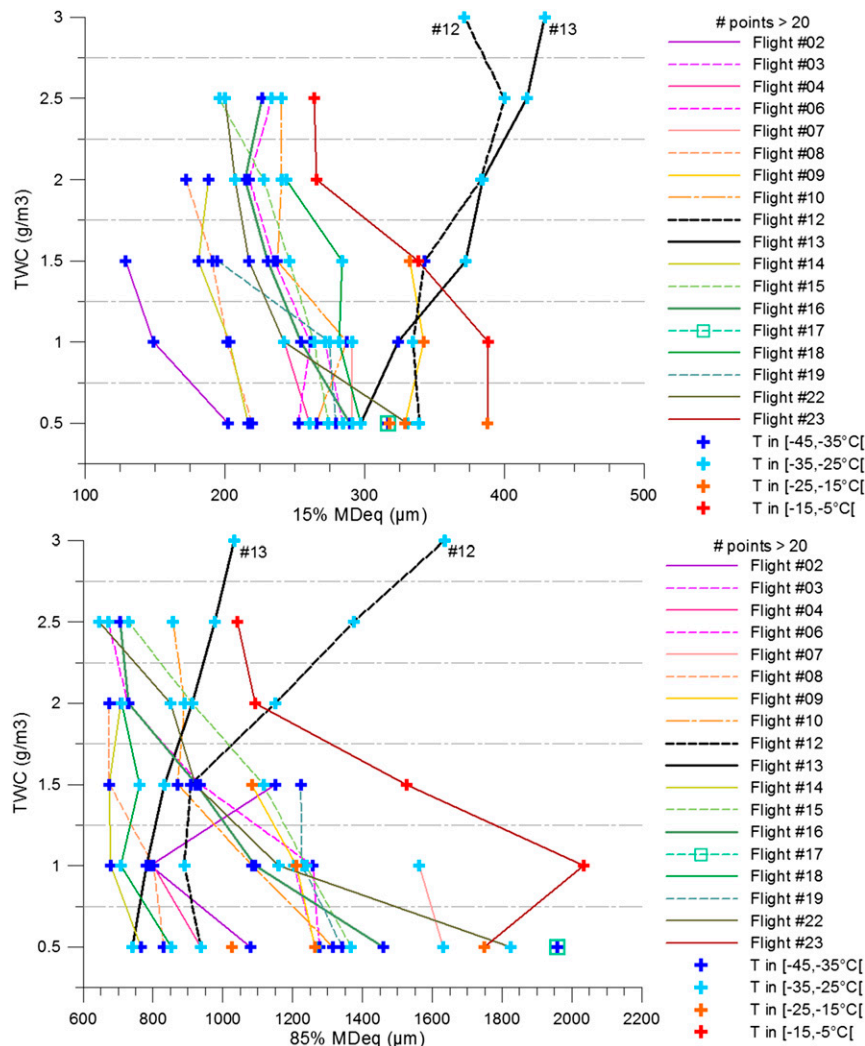


FIG. 7. Mean (top) 15%MD_{eq} and (bottom) 85%MD_{eq} (μm) as a function of TWC (from IKP2). The color code for symbols indicates the temperature: lower temperatures are in blue, and higher temperatures appear in red/orange, whereas the color code for lines refers to individual flights.

different ice particle microphysical properties relative to all the other MCS sampled during the first HAIC/HIWC field campaign, in spite of the fact that the large-scale synoptic conditions described in section 3a were similar. Indeed, as was shown for flights 12 and 13:

- The MCSs of flights 7 and 8 developed during MJO phase 7 (see Fig. 1).
- The MCS of flight 16 MCS was also associated with a low pressure system.
- Finally, the MCSs sampled during flights 6 and 8 also developed in the Joseph Bonaparte Gulf.

As mentioned earlier in section 3a, one feature specific to the MCSs of flights 12 and 13 is time duration. As reported in the mission day's summaries and according

to satellite images, a significant reintensification occurred after flight 12, leading to the subsequent launch of flight 13. This is the only case in the Darwin campaign with sufficient daytime duration to permit two distinct flights in the same MCS.

Concerning the MCS microphysics, Fig. 8 illustrates 2D-S images of particles larger than $300\mu\text{m}$. Most of these particles are clearly elongated, resembling large columnar crystals and capped columns. Images showing aggregates of pristine ice particles are rare. Also images of quasi-round particles are observed, bearing in mind that 2D projections of capped columns and large columns may result in such images. These dominant pristine shapes clearly illustrate that vapor deposition is the dominant growth mechanism of these crystals.

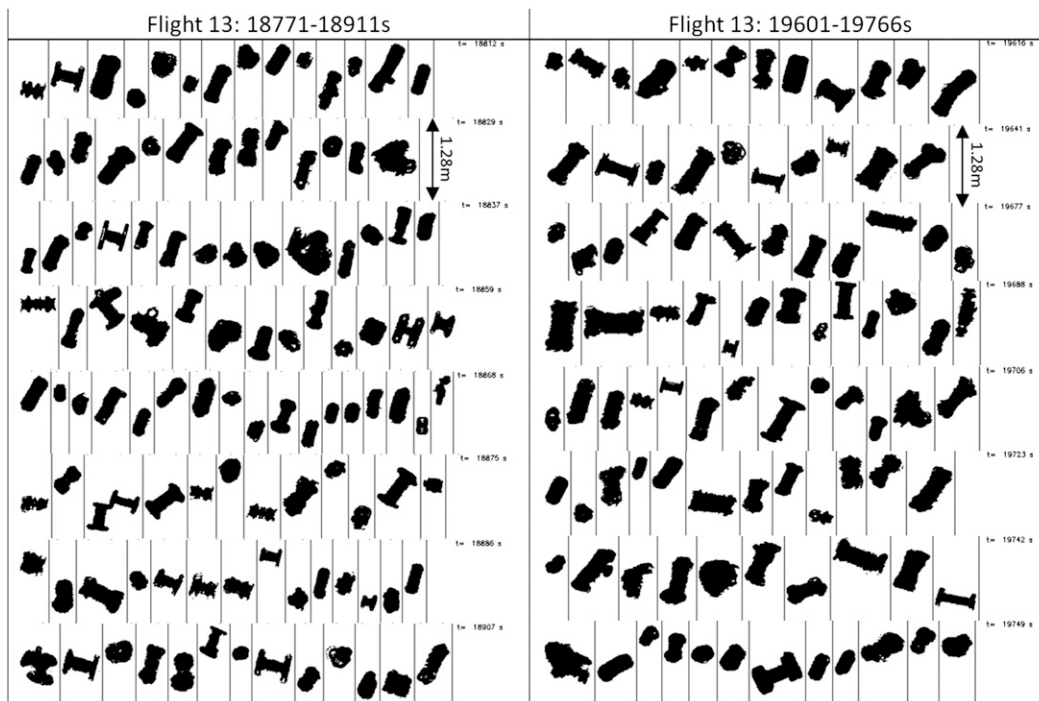


FIG. 8. Examples of 2D-S images collected in the two high IWC areas of flight 13 from Fig. 3. A random selection was performed among only the complete and valid images (shattering and splashing artifacts removed) of particles with sizes larger than $300\ \mu\text{m}$.

Analysis of the onboard Radar System Airborne (RASTA) cloud research radar (Protat et al. 2016) has revealed that high IWC regions are mostly found in and near convective cells. In the early stage of convection, ice crystals are created and subsequently start to grow. In highly supersaturated environments, nucleation (including secondary ice production) may produce high concentrations of small particles in these high IWC convective cells, helping to explain the MMD decrease with increasing IWC that is observed for most of the flights. Then, if convection regenerates, or is maintained over longer time periods in the cloud system, such as postulated for flights 12 and 13, ice crystals that were formed during the initial stage may be lifted up by the new updraft and continue to grow by vapor deposition. An alternate possibility is that convection was less vigorous in flight 13, allowing ice crystals that were formed close to -10°C to stay longer at low levels and grow to larger sizes before being lifted to higher altitude. One may also speculate that aerosol loading might be different, as some aerosols have been scavenged by precipitation, possibly changing the number of ice nuclei (IN) available for nucleation, and thus the number and size of the ice crystal population. Thus, our main hypothesis to explain the increase of MMD with TWC is that this is a consequence of a longer-lasting growth of ice crystals by vapor deposition.

To summarize, flight-to-flight differences in the trends of ice crystal population MMDs in high IWC conditions at cold temperatures are potentially caused by different dynamical and microphysical histories of the sampled MCSs. Ice crystal MMDs decreasing with TWC could be very much related to updrafts with high vertical velocity and high supersaturation with respect to ice, whereas MMDs increasing with TWC could result from less intense updrafts that favor growth to larger sizes of ice crystals created at lower levels (e.g., close to -10°C). Formation of fewer and thus larger new ice crystals might also be postulated later in the life cycle of a storm, if fewer IN are present, possibly due to scavenging by precipitation during a previous convective cycle. Cloud simulations with detailed microphysics models studying the histories of the ice crystals in high IWC regions may provide the best means in which to understand the differences of flights 12 and 13 MMDs versus the other flights.

2) LINKS BETWEEN THE 15%MD, 85%MD, AND THE MMD

Before the HAIC/HIWC campaign, there have been few reports in the literature describing the microphysical in situ properties of high IWC areas of cloud. The results of this study come from a large and unique dataset focused on sampling as close as possible to such areas in

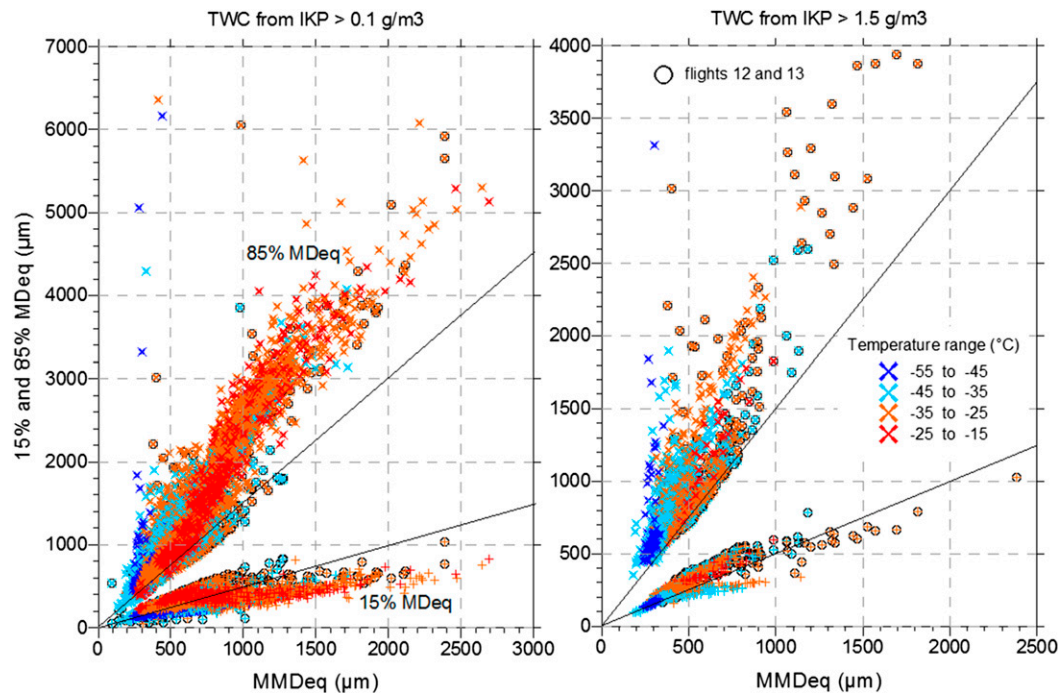


FIG. 9. The $15\%MD_{eq}$ (+) and $85\%MD_{eq}$ (x) as a function of MMD_{eq} . The color code indicates different temperatures with blue for colder conditions and orange and red for warmer conditions. (left) Includes all data points with TWC values (from the IKP2) larger than 0.1 g m^{-3} , whereas (right) contains only data points with TWC larger than 1.5 g m^{-3} . Results from flights 12 and 13 are circular symbols with a gray perimeter. The black lines represent relations of $y = 0.5MMD_{eq}$ and $y = 1.5MMD_{eq}$, in order to compare with H03 (cf. section 4c). Characteristics of the different fits through the origin are given in Table 2.

deep convection. A statistical analysis of the median mass diameters of ice crystals in clouds is rather uncommon in the literature. However, Heymsfield (2003, hereafter H03) presented a study where MMD values were deduced from a dataset of airborne OAP measurements, with some flights performed in anvils and stratiform regions of tropical convection, and other flights in synoptically generated cloud layers and cirrus. H03 (p. 2577) used the “diameter of a circle that completely encloses the two-dimensional image of each particle” to characterize the size of the particle and found that the corresponding MMD values range from $100 \mu\text{m}$ to values as large as 4 mm . The corresponding range of MMD_{eq} for the HAIC/HIWC dataset, for TWCs larger than 0.1 g m^{-3} and using the D_{eq} size definition, is from $100 \mu\text{m}$ up to 2.7 mm .

Comparing our results to those of H03 is not perfectly straightforward, as there are noticeable differences in both the OAP data processing and the MMD computation. Concerning the H03 PSD retrieval, the 2D probes were not equipped with antishattering tips, no filtering of the shattering artifacts was applied, and the treatment of out-of-focus particles was not detailed. Furthermore, H03 computed the ice mass using constant values for the α and

β parameters of the mass–size relationship $m = \alpha D^\beta$ and a “maximum” diameter to define the particle size. Leroy et al. (2016) studied the MMD sensitivity with respect to the prefactor α , the exponent β , and also the particle size definition itself. That study demonstrated that different assumed values of β and different size definitions could lead to significant changes in the computed MMD values. Since in this study we are calculating time-dependent values for β , taking into account the ice crystal morphology, and since we are using the 2D area-equivalent diameter, our MMD_{eq} values are therefore not directly comparable to those of H03. We can simply note that each study reveals a similar range of MMD values from $100 \mu\text{m}$ up to a few millimeters in MMD.

However, H03 also found that the $15\%MD$ and $85\%MD$ could be estimated from linear calculations of approximately 0.5 and 1.5 times the MMD value, respectively. A similar analysis of this HAIC/HIWC dataset is summarized in Fig. 9 and Table 2 for comparison. Black lines in Fig. 9 represent 0.5 and 1.5 times the MMD_{eq} . All data points are color coded according to temperature and flights 12 and 13 are highlighted by using circular points with a gray perimeter, while all other flights are depicted using “x” and “+” symbols for

TABLE 2. Characteristics of the fits through the origin for estimating the 15%MD_{eq} and 85%MD_{eq} from the MMD_{eq}. Best fits for the HAIC/HIWC dataset are compared with the slope given by H03 for two IKP2 TWC thresholds.

		TWC > 0.1 g m ⁻³		TWC > 1.5 g m ⁻³	
		Slope	R ²	Slope	R ²
15%MD _{eq}	HAIC/HIWC fit	0.44	0.92	0.56	0.97
	Slope from H03	0.5	0.92	0.5	0.94
85%MD _{eq}	HAIC/HIWC fit	2.1	0.94	2.0	0.91
	Slope from H03	1.5	0.77	1.5	0.80

15%MD_{eq} and 85%MD_{eq} respectively. The left panel includes all data points with TWC larger than 0.1 g m⁻³, whereas the right panel is limited to data from high IWC regions with TWC values exceeding 1.5 g m⁻³.

For the HAIC/HIWC dataset, the 15%MD_{eq} values are distributed along the 0.5MMD_{eq} line. The best-fit analyses for TWC thresholds of 0.1 and 1.5 g m⁻³ (left and right panels, respectively) yield slopes of 0.44 and 0.56, respectively, and coefficients of determination (*r*²) of 0.92 and 0.97, respectively (cf. Table 2), whereas the H03 0.5MMD_{eq} fit passing through the origin would have given *r*² values of 0.92 and 0.94, respectively. Thus, the H03 0.5MMD_{eq} line seems to be a reasonable proxy for the 15%MD_{eq}. Figure 9 tends to show that this would lead to an overestimation of the 15%MD_{eq} for large MMD_{eq} when applying the fit to the 0.1 g m⁻³ TWC threshold dataset.

For the 85%MD_{eq}, the 1.5MMD_{eq} line in Fig. 9 seems to represent only an approximation of the lower limit of the 85%MD_{eq} for MMD_{eq} below 1 mm. Then, for MMD_{eq} greater than 1 mm, the 1.5MMD_{eq} line clearly underestimates even the lower limit of the 85%MD_{eq}. These 85%MD_{eq} results apply to the high IWC cloud regions (TWC > 1.5 g m⁻³) as well as to the whole HAIC/HIWC dataset (TWC > 0.1 g m⁻³). The best fit of the 85%MD_{eq} data for thresholds of 0.1 and 1.5 g m⁻³ yields slopes of 2.1 and 2.0, respectively, and *r*² values of 0.94 and 0.91 (cf. Table 2) respectively, whereas the H03 1.5MMD_{eq} fit would result in *r*² values lower than 0.8. But, as previously mentioned, in the HAIC/HIWC dataset the 85%MD_{eq} values are relatively for an average 15%MD_{eq} and for a lower limit of the 85%MD_{eq}, both of which are most applicable for MMD_{eq} lower than 1 mm and for all cloud regions, including high IWC areas. However, overall, a relationship of 2MMD_{eq} better estimates the 85%MD_{eq} for all ranges of MMD_{eq} and TWC.

5. Conclusions

The first HAIC/HIWC field campaign out of Darwin, Australia, provided a unique opportunity to collect

reliable microphysical data in high ice water content regions in tropical, mostly oceanic, mesoscale convective systems. The total water content measured by the IKP2 provided reference measurements, particularly for higher TWC and at high altitudes, where other technologies are known to saturate, operate outside of their calibrated range, or have larger uncertainties due to collection efficiency or other shortcomings. Airborne OAP recordings of individual ice crystal images provided detailed information on the hydrometeors in cloud. A careful analysis of the 2D-S and PIP OAP images provided composite PSDs as a function of time, from which MMDs were inferred. The analysis yielded the following series of common findings for high IWC cloud areas in most (excluding outlier flights 12 and 13) of the sampled MCSs:

- In high IWC areas, most of the 5-s (~1 km) median mass diameter MMD_{eq} values range between 250 and 500 μm between -25° and -55°C.
- MMD_{eq} decreases with (i) decreasing temperatures and (ii) increasing TWC, indicating a progressive increase in the contribution of smaller ice crystals below 500 μm to TWC.
- Ice crystals smaller than 100 μm typically account for less than 15% of the total mass.
- The fraction of the mass contributed by large ice crystals is more variable. The relationship 1.5MMD_{eq} gives roughly the lower limit of the observed 85%MD_{eq} when MMD_{eq} is lower than 1 mm. For example, for an MMD_{eq} value of 400 μm, the minimum 85%MD_{eq} is close to 600 μm but maximum values were observed as large as 2 mm.
- When MMD_{eq} is less than 1 mm, 0.5MMD_{eq} is generally a good proxy for the estimation of the 15%MD_{eq}, both in high IWC areas and also outside these areas. When MMD_{eq} is greater than 1 mm, 0.5MMD_{eq} overestimates the observed 15%MD_{eq} values outside the high IWC areas.
- The 2MMD_{eq} is a better proxy for the 85%MD_{eq} than the 1.5MMD_{eq} proposed by H03. The 1.5MMD_{eq} estimate will provide the lower limit of the values of the 85%MD_{eq}.

These findings, using data from research flights targeting high IWC clouds, tend to support the idea that in most cases ice crystals in high IWC areas of MCS-type young convection are significantly smaller than in other parts of the cloud, and that this effect is amplified with decreasing temperature. However, flights 12 and 13 yielded quite different results. Most of the Darwin flights were made in classical early morning oceanic MCSs with a life cycle from initial growth to decay on the order of 6–12 h.

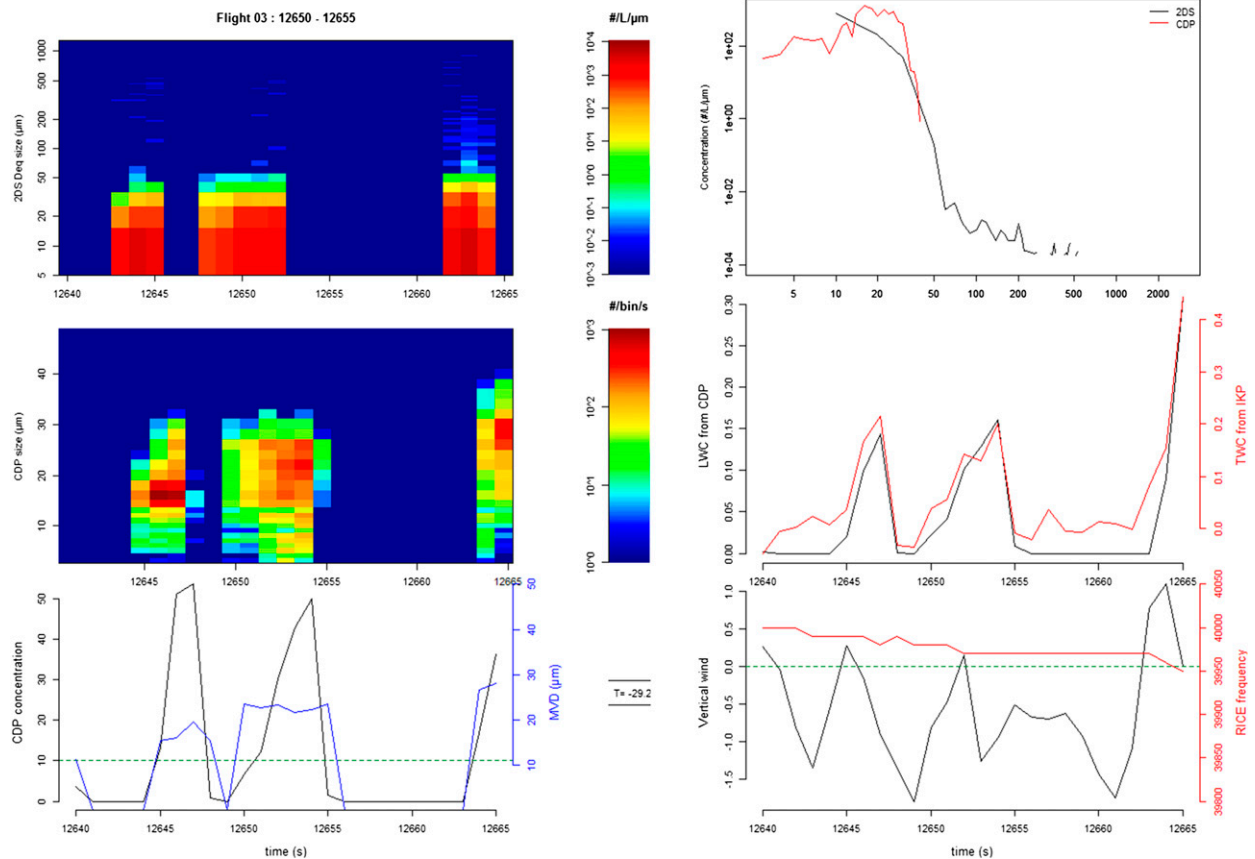


FIG. A1. Example of instrumental responses to supercooled liquid water droplets. (left) The number concentration as a function of time and particle size for the (top) 2D-S probe and (middle) CDP-2 probe. (bottom left) Time series of the MVD (blue, right axis) and the total concentration (black line, left axis) deduced from the CDP-2 concentrations. (right) The (top) mean particle spectrum for the 2D-S (black) and the CDP-2 (red) for the studied period. (middle) Time series of TWC measured from the IKP2 and hypothetical LWC deduced from CDP-2, and (bottom) vertical wind velocity and RICE probe raw frequency.

Flights 12 and 13 were the only flights to be performed in the same long-lasting quasi-stationary system, a tropical storm, and for these two flights, the concentrations of large ice particles were found to be higher than in all other clouds sampled at the same temperature level. MMDs mostly exceed $500\ \mu\text{m}$ and even reached $2\ \text{mm}$. Moreover, in these flights MMD tended to increase with increasing TWC, the opposite trend found for the classical shorter-lived oceanic MCS. In spite of the larger MMDs observed, the pilot's X-band radar (not shown here) indicated that reflectivity at flight level remained relatively low (green echoes or no echoes), not reaching a level of $30\ \text{dBZ}$ that would typically result in a cautionary course change for avoidance. Thus, the data from these flights are still consistent with the scenario of high IWC/low radar reflectivity hypothesized by Mason et al. (2006) to be conducive to engine power-loss events. Unfortunately, these interesting and opposite MMD trends are based on only two flights, and it is hoped that further measurements of this type will be

collected in future high IWC-dedicated field campaigns to statistically extend the present findings.

Flights 12 and 13 therefore suggest that different mechanisms could lead to the formation of high IWC areas. Our current hypothesis is that in strong updrafts with high supersaturation with respect to ice, nucleation processes will create large amounts of small ice, which could explain the trend of decreasing MMD with increasing TWC observed for most flights. In contrast, in weak but long-lasting updrafts with possibly lower supersaturation, growth of larger ice crystals, nucleated close to -10°C , could be favored due to the longer available growth times, leading this time to an increase of the MMD with increasing TWC as observed for flights 12 and 13. Model simulations with detailed microphysics are needed to better understand different possible mechanisms of forming high IWC areas in tropical MCS.

Acknowledgments. The authors acknowledge R. Potts and the Bureau of Meteorology for providing general

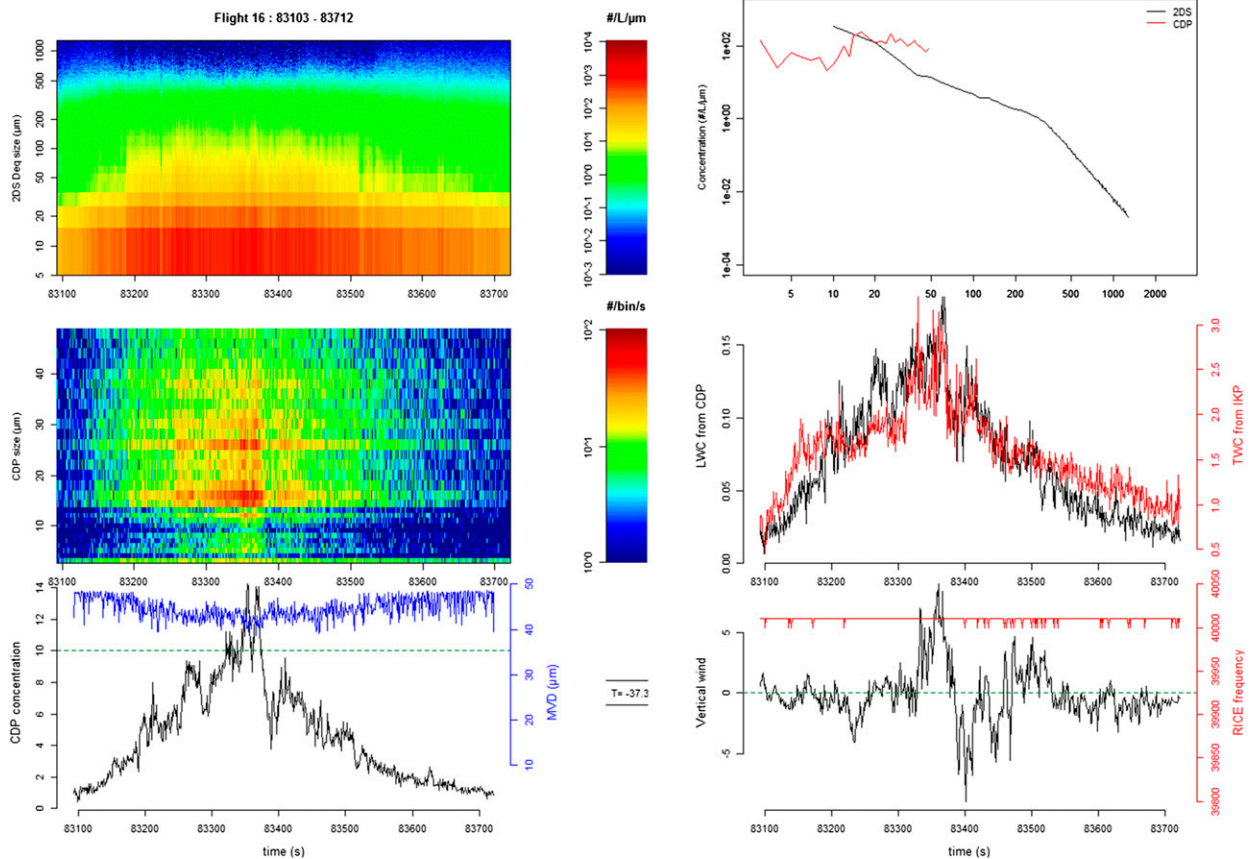


FIG. A2. As in Fig. A1, but for instrumental responses in pure ice conditions.

meteorological products used for this article. The authors greatly appreciate the provision of rapid-scan visible and infrared MTSAT-1R geostationary satellite data by the Japan Meteorological Agency through an agreement with the Bureau of Meteorology, and the processing and distributing of that data by the bureau under the direction of R. Potts. The authors also acknowledge L. Nguyen, P. Minnis, and the NASA Langley Research Center team for further postprocessing of the satellites' images.

The research leading to these results has received funding from (i) the European Union's Seventh Framework Programme in research, technological development, and demonstration under Grant Agreement ACP2-GA-2012-314314; (ii) the European Aviation Safety Agency (EASA) Research Program under Service Contract EASA.2013.FC27; and (iii) the Federal Aviation Administration (FAA)'s Aviation Research Division and Aviation Weather Division under Agreement CON-I-1301 with the Centre National de la Recherche Scientifique. Funding to support the Darwin flight project was also provided by the NASA Aviation Safety Program, the Boeing Co., and Transport Canada. Additional support was also provided

by Airbus Operations SAS, Science Engineering Associates, the Bureau of Meteorology, Environment and Climate Change Canada, the National Research Council of Canada, the University of Utah, and the National Science Foundation under Grant AGS 12-13311.

APPENDIX

Identification of Supercooled Liquid Water Droplets in the Dataset

As mentioned in section 2b(2), the occurrence of supercooled liquid water has been studied by combining the measurements from the CDP-2, 2D-S, and RICE instruments. Solely cases with CDP-2 concentration exceeding 10 cm^{-3} were examined. Figures A1 and A2 present two examples from the HAIC/HIWC dataset illustrating the response of the different probes in liquid and glaciated conditions. For both figures, graphs are showing number concentrations as a function of time and size for the 2D-S (top left) and the CDP-2 (middle left), time series of the mean volume diameter (MVD) and total concentrations measured by the CDP-2

(bottom left), mean 2D-S and CDP-2 particle size distributions (top right) for the respective data, time series of TWC from the IKP together with LWC estimated from CDP-2 (middle right), and vertical wind velocity with RICE (icing detector) probe raw frequency (bottom right).

In Fig. A1, the CDP-2 total concentration reaches values up to 50 cm^{-3} . Moreover, CDP-2 particle size distributions indicate that most of the particles are smaller than $30 \mu\text{m}$. Similarly, the 2D-S measured only particles in the five first bins, from 10 to $50 \mu\text{m}$. TWC from the IKP2 is low and of the same order of magnitude as the LWC estimated from the CDP-2 measurements. Finally, the frequency of the RICE probe is slightly changing, thus indicating ice accretion. Combining all this information leads to the conclusion that supercooled liquid water has been encountered during this flight sequence of flight 3 performed at a mean temperature of -29.2°C . Therefore, this period has been removed from the analysis presented here.

In Fig. A2, the CDP-2 concentration slightly exceeds 10 cm^{-3} ; however, particle sizes encompass the whole size range of the probe. Furthermore, the CDP-2 PSD is flat and the 2DS PSD confirms the presence of ice crystals at larger sizes. TWC from the IKP2 is more than an order of magnitude higher than the hypothetical LWC integrated from the CDP size spectra and also the RICE frequency stays almost constant. This behavior of the CDP-2 is a false response to ice crystals at negative temperatures (-37.3°C for Fig. A2).

Regarding the four periods selected in section 2b(2), the CDP-2 total concentration does not exceed 2 cm^{-3} during the two high IWC areas selected in flight 13. For flight 16, total CDP concentration slightly exceeds 10 cm^{-3} for both selected high IWC periods and indeed Fig. A2 corresponds to the second high IWC period of flight 16. The above-mentioned discussion of the graphs presented in Fig. A2 led to the conclusion that solely ice crystals were encountered during this period of flight. The first high IWC period of flight 16 presented in section 2b(2) is very similar to Fig. A2, thus also validating the absence of supercooled liquid water droplets during this period of flight.

REFERENCES

- Baker, B., Q. Mo, R. P. Lawson, D. O'Connor, and A. Korolev, 2009: The effects of precipitation on cloud droplet measurement devices. *J. Atmos. Oceanic Technol.*, **26**, 1404–1409, doi:10.1175/2009JTECHA1191.1.
- Baumgardner, D., and A. Rodi, 1989: Laboratory and wind tunnel evaluations of the Rosemount Icing Detector. *J. Atmos. Oceanic Technol.*, **6**, 971–979, doi:10.1175/1520-0426(1989)006<0971:LAWTEO>2.0.CO;2.
- , and Coauthors, 2011: Airborne instruments to measure atmospheric aerosol particles, clouds and radiation: A cook's tour of mature and emerging technology. *Atmos. Res.*, **102**, 10–29, doi:10.1016/j.atmosres.2011.06.021.
- Bouniol, D., J. Delanoë, C. Duroure, A. Protat, V. Giraud, and G. Penide, 2010: Microphysical characterisation of West African MCS anvils. *Quart. J. Roy. Meteor. Soc.*, **136**, 323–344, doi:10.1002/qj.557.
- Brenguier, J.-L., and Coauthors, 2013: In Situ measurements of cloud and precipitation particles. *Airborne Measurements for Environmental Research: Methods and Instruments*, M. Wendish and J.-L. Brenguier, Eds., Wiley Series in Atmospheric Physics and Remote Sensing, Wiley-VCH, 225–302.
- Brown, P. R. A., and P. N. Francis, 1995: Improved measurements of the ice water content in cirrus using a total-water probe. *J. Atmos. Oceanic Technol.*, **12**, 410–414, doi:10.1175/1520-0426(1995)012<0410:IMOTIW>2.0.CO;2.
- Claffey, K. J., K. F. Jones, and C. C. Ryerson, 1995: Use and calibration of Rosemount ice detectors for meteorological research. *Atmos. Res.*, **36**, 277–286, doi:10.1016/0169-8095(94)00042-C.
- Cober, S. G., G. A. Isaac, and A. V. Korolev, 2001: Assessing the Rosemount Icing Detector with in situ measurements. *J. Atmos. Oceanic Technol.*, **18**, 515–528, doi:10.1175/1520-0426(2001)018<0515:ATRIDW>2.0.CO;2.
- Cotton, R. J., and Coauthors, 2013: The effective density of small ice particles obtained from *in situ* aircraft observations of mid-latitude cirrus. *Quart. J. Roy. Meteor. Soc.*, **139**, 1923–1934, doi:10.1002/qj.2058.
- Davison, C. R., J. MacLeod, J. Strapp, and D. Buttsworth, 2008: Isokinetic total water content probe in a naturally aspirating configuration: Initial aerodynamic design and testing. *Proc. 46th AIAA Aerospace Sciences Meeting and Exhibit*, Reno, NV, American Institute of Aeronautics and Astronautics, AIAA-2008-435. [Available online at <http://arc.aiaa.org/doi/abs/10.2514/6.2008-435>.]
- , J. W. Strapp, L. E. Lilie, T. P. Ratvasky, and C. Dumont, 2016: Isokinetic TWC evaporator probe: Calculations and systemic error analysis. *Eighth AIAA Atmospheric and Space Environments Conf.*, Washington, DC, American Institute of Aeronautics and Astronautics, AIAA-2016-4060. [Available online at <http://arc.aiaa.org/doi/10.2514/6.2016-4060>.]
- Dezitter, F., A. Grandin, J.-L. Brenguier, F. Hervy, H. Schlager, P. Villedieu, and G. Zalamansky, 2013: HAIC (High altitude ice crystals). *Proc. Fifth AIAA Atmospheric and Space Environments Conf.*, San Diego, CA, American Institute of Aeronautics and Astronautics, AIAA-2013-2674. [Available online at <http://arc.aiaa.org/doi/abs/10.2514/6.2013-2674>.]
- Diao, M., M. A. Zondlo, A. J. Heymsfield, S. P. Beaton, and D. C. Rogers, 2013: Evolution of ice crystal regions on the micro-scale based on in situ observations. *Geophys. Res. Lett.*, **40**, 3473–3478, doi:10.1002/grl.50665.
- , J. B. Jensen, L. L. Pan, C. R. Homeyer, S. Honomichl, J. F. Bresch, and A. Bansemmer, 2015: Distributions of ice supersaturation and ice crystals from airborne observations in relation to upper tropospheric dynamical boundaries. *J. Geophys. Res. Atmos.*, **120**, 5101–5121, doi:10.1002/2015JD023139.
- DMT, 2009: Single particle imaging. Data analysis user's guide, DOC-0223, Rev. A, 34 pp.
- Erfani, E., and D. L. Mitchell, 2016: Developing and bounding ice particle mass- and area-dimension expressions for use in atmospheric models and remote sensing. *Atmos. Chem. Phys.*, **16**, 4379–4400, doi:10.5194/acp-16-4379-2016.

- Field, P. R., A. J. Heymsfield, and A. Bansemer, 2006: Shattering and particle interarrival times measured by optical array probes in ice clouds. *J. Atmos. Oceanic Technol.*, **23**, 1357–1371, doi:10.1175/JTECH1922.1.
- Fontaine, E., A. Schwarzenboeck, J. Delanoë, W. Wobrock, D. Leroy, R. Dupuy, C. Gourbeyre, and A. Protat, 2014: Constraining mass–diameter relations from hydrometeor images and cloud radar reflectivities in tropical continental and oceanic convective anvils. *Atmos. Chem. Phys.*, **14**, 11 367–11 392, doi:10.5194/acp-14-11367-2014.
- Grandin, A., J.-M. Merle, M. Weber, J. Strapp, A. Protat, and P. King, 2014: AIRBUS flight tests in high total water content regions. *Proc. Sixth AIAA Atmospheric and Space Environments Conf.*, Atlanta, GA, American Institute of Aeronautics and Astronautics, AIAA-2014-2753. [Available online at <http://arc.aiaa.org/doi/abs/10.2514/6.2014-2753>.]
- Heymsfield, A. J., 2003: Properties of tropical and midlatitude ice cloud particle ensembles. Part I: Median mass diameters and terminal velocities. *J. Atmos. Sci.*, **60**, 2573–2591, doi:10.1175/1520-0469(2003)060<2573:POTAMI>2.0.CO;2.
- , and J. L. Parrish, 1978: A computational technique for increasing the effective sampling volume of the PMS two-dimensional particle size spectrometer. *J. Appl. Meteor.*, **17**, 1566–1572, doi:10.1175/1520-0450(1978)017<1566:ACTFIT>2.0.CO;2.
- , and L. M. Miloshevich, 1993: Homogeneous ice nucleation and supercooled liquid water in orographic wave clouds. *J. Atmos. Sci.*, **50**, 2335–2353, doi:10.1175/1520-0469(1993)050<2335:HINASL>2.0.CO;2.
- , A. Bansemer, P. R. Field, S. L. Durden, J. L. Stith, J. E. Dye, W. Hall, and C. A. Grainger, 2002: Observations and parameterizations of particle size distributions in deep tropical cirrus and stratiform precipitating clouds: Results from in situ observations in TRMM field campaigns. *J. Atmos. Sci.*, **59**, 3457–3491, doi:10.1175/1520-0469(2002)059<3457:OAOPOPS>2.0.CO;2.
- , —, C. Schmitt, C. Twohy, and M. R. Poellot, 2004: Effective ice particle densities derived from aircraft data. *J. Atmos. Sci.*, **61**, 982–1003, doi:10.1175/1520-0469(2004)061<0982:EIPDDF>2.0.CO;2.
- , L. M. Miloshevich, C. Schmitt, A. Bansemer, C. Twohy, M. R. Poellot, A. Fridlind, and H. Gerber, 2005: Homogeneous ice nucleation in subtropical and tropical convection and its influence on cirrus anvil microphysics. *J. Atmos. Sci.*, **62**, 41–64, doi:10.1175/JAS-3360.1.
- , C. Schmitt, A. Bansemer, and C. H. Twohy, 2010: Improved representation of ice particle masses based on observations in natural clouds. *J. Atmos. Sci.*, **67**, 3303–3318, doi:10.1175/2010JAS3507.1.
- , —, and —, 2013: Ice cloud particle size distributions and pressure-dependent terminal velocities from in situ observations at temperatures from 0° to –86°C. *J. Atmos. Sci.*, **70**, 4123–4154, doi:10.1175/JAS-D-12-0124.1.
- King, W. D., 1986: Air flow and particle trajectories around aircraft fuselages. IV: Orientation of ice crystals. *J. Atmos. Oceanic Technol.*, **3**, 433–439, doi:10.1175/1520-0426(1986)003<0433:AFAPTA>2.0.CO;2.
- Korolev, A., 2007: Reconstruction of the sizes of spherical particles from their shadow images. Part I: Theoretical considerations. *J. Atmos. Oceanic Technol.*, **24**, 376–389, doi:10.1175/JTECH1980.1.
- , and B. Sussman, 2000: A technique for habit classification of cloud particles. *J. Atmos. Oceanic Technol.*, **17**, 1048–1057, doi:10.1175/1520-0426(2000)017<1048:ATFHCO>2.0.CO;2.
- , and G. Isaac, 2003: Roundness and aspect ratio of particles in ice clouds. *J. Atmos. Sci.*, **60**, 1795–1808, doi:10.1175/1520-0469(2003)060<1795:RAAROP>2.0.CO;2.
- , and P. R. Field, 2015: Assessment of the performance of the inter-arrival time algorithm to identify ice shattering artifacts in cloud particle probe measurements. *Atmos. Meas. Tech.*, **8**, 761–777, doi:10.5194/amt-8-761-2015.
- , E. F. Emery, J. W. Strapp, S. G. Cober, and G. A. Isaac, 2013: Quantification of the effects of shattering on airborne ice particle measurements. *J. Atmos. Oceanic Technol.*, **30**, 2527–2553, doi:10.1175/JTECH-D-13-00115.1.
- Krämer, M., and Coauthors, 2016: A microphysics guide to cirrus clouds—Part 1: Cirrus types. *Atmos. Chem. Phys.*, **16**, 3463–3483, doi:10.5194/acp-16-3463-2016.
- Lance, S., C. A. Brock, D. Rogers, and J. A. Gordon, 2010: Water droplet calibration of the Cloud Droplet Probe (CDP) and in-flight performance in liquid, ice and mixed-phase clouds during ARCPAC. *Atmos. Meas. Tech.*, **3**, 1683–1706, doi:10.5194/amt-3-1683-2010.
- Lawson, R. P., 2011: Effects of ice particles shattering on the 2D-S probe. *Atmos. Meas. Tech.*, **4**, 1361–1381, doi:10.5194/amt-4-1361-2011.
- , L. J. Angus, and A. J. Heymsfield, 1998: Cloud particle measurements in thunderstorm anvils and possible weather threat to aviation. *J. Aircr.*, **35**, 113–121, doi:10.2514/2.2268.
- , D. O’Connor, P. Zmarzly, K. Weaver, B. Baker, Q. Mo, and H. Jonsson, 2006: The 2D-S (stereo) probe: Design and preliminary tests of a new airborne, high-speed, high-resolution particle imaging probe. *J. Atmos. Oceanic Technol.*, **23**, 1462–1477, doi:10.1175/JTECH1927.1.
- , E. Jensen, D. L. Mitchell, B. Baker, Q. Mo, and B. Pilon, 2010: Microphysical and radiative properties of tropical clouds investigated in TC4 and NAMMA. *J. Geophys. Res.*, **115**, D00J08, doi:10.1029/2009JD013017.
- Leroy, D., E. Fontaine, A. Schwarzenboeck, and J. W. Strapp, 2016: Ice crystal sizes in high ice water content clouds. Part I: On the computation of median mass diameters from in situ measurements. *J. Atmos. Oceanic Technol.*, **33**, 2461–2476, doi:10.1175/JTECH-D-15-0151.1.
- Locatelli, J. D., and P. V. Hobbs, 1974: Fall speeds and masses of solid precipitation particles. *J. Geophys. Res.*, **79**, 2185–2197, doi:10.1029/JC079i015p02185.
- Madden, R. A., and P. R. Julian, 1972: Description of global-scale circulation cells in the tropics with a 40–50 day period. *J. Atmos. Sci.*, **29**, 1109–1123, doi:10.1175/1520-0469(1972)029<1109:DOGSCC>2.0.CO;2.
- Mason, J., W. Strapp, and P. Chow, 2006: The ice particle threat to engines in flight. *Proc. 44th AIAA Aerospace Sciences Meeting and Exhibit*, Reno, NV, American Institute of Aeronautics and Astronautics, AIAA-2006-206. [Available online at doi:10.2514/6.2006-206.]
- McFarquhar, G. M., and A. J. Heymsfield, 1996: Microphysical characteristics of three anvils sampled during the Central Equatorial Pacific Experiment. *J. Atmos. Sci.*, **53**, 2401–2423, doi:10.1175/1520-0469(1996)053<2401:MCOTAS>2.0.CO;2.
- , M. S. Timlin, R. M. Rauber, B. F. Jewett, J. A. Grim, and D. P. Jorgensen, 2007: Vertical variability of cloud hydrometeors in the stratiform region of mesoscale convective systems and bow echoes. *Mon. Wea. Rev.*, **135**, 3405–3428, doi:10.1175/MWR3444.1.
- Mitchell, D. L., 1996: Use of mass- and area-dimensional power laws for determining precipitation particle terminal velocities. *J. Atmos. Sci.*, **53**, 1710–1723, doi:10.1175/1520-0469(1996)053<1710:UOMAAD>2.0.CO;2.

- , S. Mishra, and R. P. Lawson, 2011: Representing the ice fall speed in climate models: Results from Tropical Composition, Cloud and Climate Coupling (TC4) and the Indirect and Semi-Direct Aerosol Campaign (ISDAC). *J. Geophys. Res.*, **116**, D00T03, doi:[10.1029/2010JD015433](https://doi.org/10.1029/2010JD015433).
- Protat, A., and Coauthors, 2009: Assessment of Cloudsat reflectivity measurements and ice cloud properties using ground-based and airborne cloud radar observations. *J. Atmos. Oceanic Technol.*, **26**, 1717–1741, doi:[10.1175/2009JTECHA1246.1](https://doi.org/10.1175/2009JTECHA1246.1).
- , S. Rauniyar, V. V. Kumar, and J. W. Strapp, 2014: Optimizing the probability of flying in high ice water content conditions in the tropics using a regional-scale climatology of convective cell properties. *J. Appl. Meteor. Climatol.*, **53**, 2438–2456, doi:[10.1175/JAMC-D-14-0002.1](https://doi.org/10.1175/JAMC-D-14-0002.1).
- , and Coauthors, 2016: The measured relationship between ice water content and cloud radar reflectivity in tropical convective clouds. *J. Appl. Meteor. Climatol.*, **55**, 1707–1729, doi:[10.1175/JAMC-D-15-0248.1](https://doi.org/10.1175/JAMC-D-15-0248.1).
- Rosenfeld, D., and W. L. Woodley, 2000: Deep convective clouds with sustained supercooled liquid water down to -37.5°C . *Nature*, **405**, 440–442, doi:[10.1038/35013030](https://doi.org/10.1038/35013030).
- Sassen, K., and G. C. Dodd, 1988: Homogeneous nucleation rate for highly supercooled cirrus cloud droplets. *J. Atmos. Sci.*, **45**, 1357–1369, doi:[10.1175/1520-0469\(1988\)045<1357:HNRFHS>2.0.CO;2](https://doi.org/10.1175/1520-0469(1988)045<1357:HNRFHS>2.0.CO;2).
- SPEC, 2011: 2D-S post-processing using 2D-S View Software: User manual, Version 1.1, 48 pp.
- Strapp, J. W., J. MacLeod, and L. Lilie, 2008: Calibration of ice water content in a wind tunnel/engine test cell facility. *Extended Abstracts, 15th Int. Conf. on Cloud and Precipitation*, Cancun, Mexico, International Commission on Clouds and Precipitation, P13.1. [Available online at http://cabernet.atmosfcu.unam.mx/ICCP-2008/abstracts/Program_on_line/Poster_13/StrappEtAl-extended.pdf.]
- , and Coauthors, 2016a: The High Ice Water Content (HIWC) study of deep convective clouds: Science and technical plan. FAA Rep. DOT/FAA/TC-14/31, 105 pp. [Available online at <http://www.tc.faa.gov/its/worldpac/techrpt/tc14-31.pdf>.]
- , L. E. Lilie, T. P. Ratvasky, C. R. Davison, and C. Dumont, 2016b: Isokinetic TWC Evaporator Probe: Development of the IKP2 and performance testing for the HAIC-HIWC Darwin 2014 and Cayenne Field Campaigns. *Proc. Eighth AIAA Atmospheric and Space Environments Conf.*, Washington, DC, American Institute of Aeronautics and Astronautics, AIAA-2016-4059. [Available online at <http://arc.aiaa.org/doi/10.2514/6.2016-4059>.]
- Wheeler, M. C., and H. H. Hendon, 2004: An all-season real-time multivariate MJO index: Development of an index for monitoring and prediction. *Mon. Wea. Rev.*, **132**, 1917–1932, doi:[10.1175/1520-0493\(2004\)132<1917:AARMMI>2.0.CO;2](https://doi.org/10.1175/1520-0493(2004)132<1917:AARMMI>2.0.CO;2).
- Wu, W., and G. M. McFarquhar, 2016: On the impacts of different definitions of maximum dimension for nonspherical particles recorded by 2D imaging probes. *J. Atmos. Oceanic Technol.*, **33**, 1057–1072, doi:[10.1175/JTECH-D-15-0177.1](https://doi.org/10.1175/JTECH-D-15-0177.1).